

19 September 2019 / Number 37

Surveillance System in Tokyo, Japan

The infectious diseases which all physicians must report

All physicians must report to health centers the incidence of the diseases which are shown at page one. Health centers electronically report the individual cases to Tokyo Metropolitan Infectious Disease Surveillance Center.

The infectious diseases required to be reported by the sentinels

The numbers of patients who visit the sentinel clinics or hospitals during a week are reported to health centers in Tokyo. And they electronically report the numbers to Tokyo Metropolitan Infectious Disease Surveillance Center. We have about 500 sentinel clinics and hospitals in Tokyo.

Tokyo Metropolitan Institute of Public Health

TEL:81-3-3363-3213 FAX:81-3-5332-7365

e-mail:www@tokyo-eiken.go.jp

URL:idsc.tokyo-eiken.go.jp/

Number of patients with the diseases which all physicians must report

Category	Diseases	Tokyo					Japan	
		34th	35th	36th	37th	Cum 2019	37th	Cum 2019
I	Ebola hemorrhagic fever							
	Crimean-Congo hemorrhagic fever							
	Smallpox							
	South American hemorrhagic fever							
	Plague							
	Marburg disease							
	Lassa fever							
II	Acute poliomyelitis							
	Tuberculosis	84	61	51	54	2,248	307	15,177
	Diphtheria							
	Severe Acute Respiratory Syndrome(SARS)							
	Middle East Respiratory Syndrome (MERS)							
	Avian influenza H5N1							
	Avian influenza H7N9							
III	Cholera					2		4
	Shigellosis				1	15	3	72
	Enterohemorrhagic Escherichia coli infection	18	15	25	16	265	114	2,670
	Typhoid fever					3		28
	Paratyphoid fever					3		12
IV	Hepatitis E	3	1	6	2	95	7	372
	West Nile fever							
	Hepatitis A	6	4	4	1	115	6	339
	Echinococcosis							14
	Yellow fever							
	Psittacosis					3	1	13
	Omsk hemorrhagic fever							
	Relapsing fever							4
	Kyasanur forest disease							
	Q fever							
	Rabies							
	Coccidioidomycosis							2
	Monkeypox							
	Zika virus infection							1
	Severe Fever with Thrombocytopenia Syndrome					1		73
	Hemorrhagic fever with renal syndrome							
	Western equine encephalitis							
	Tick-borne encephalitis							
	Anthrax							
	Chikungunya fever			1		3	2	28
	Scrub typhus(Tsutsugamushi disease)						1	84
	Dengue fever	6	6	4	1	84	6	311
	Eastern equine encephalitis							
	Avian influenza (excluding H5N1 and H7N9)							
	Nipah virus infection							
	Japanese spotted fever						4	166
	Japanese encephalitis							
	Hantavirus pulmonary syndrome							
	Herpes B virus infection							
	Glanders							
	Brucellosis					1		2
	Venezuelan equine encephalitis							
	Hendra virus infection							
Epidemic typhus								
Botulism							1	
Malaria		1	2	1	13	1	42	
Tularemia								
Lyme disease						1	11	
Lyssavirus infection(excluding rabies)								
Rift valley fever								
Melioidosis							1	
Legionellosis	5	6	3	4	134	68	1,657	
Leptospirosis	1	1		2	5	2	13	
Rocky mountain spotted fever								

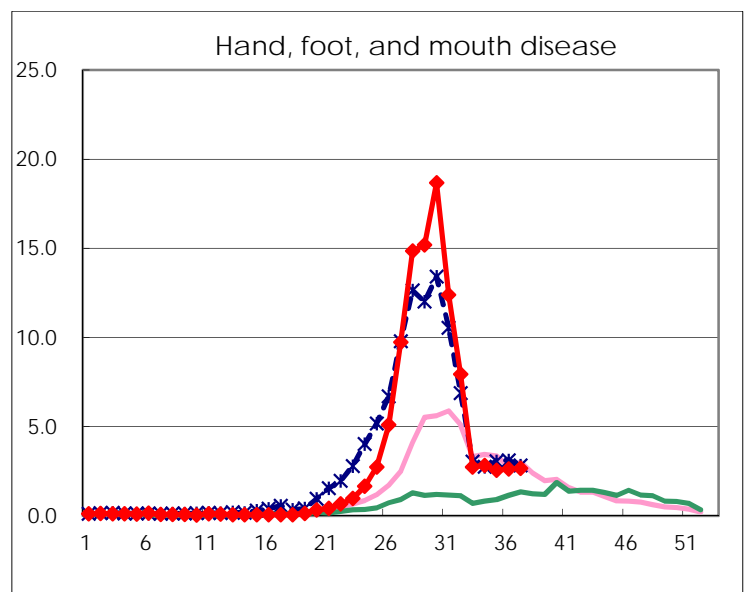
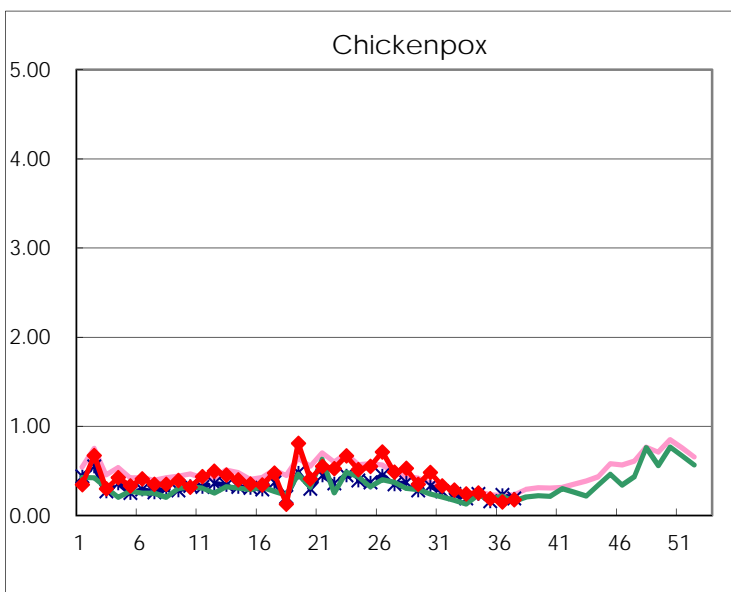
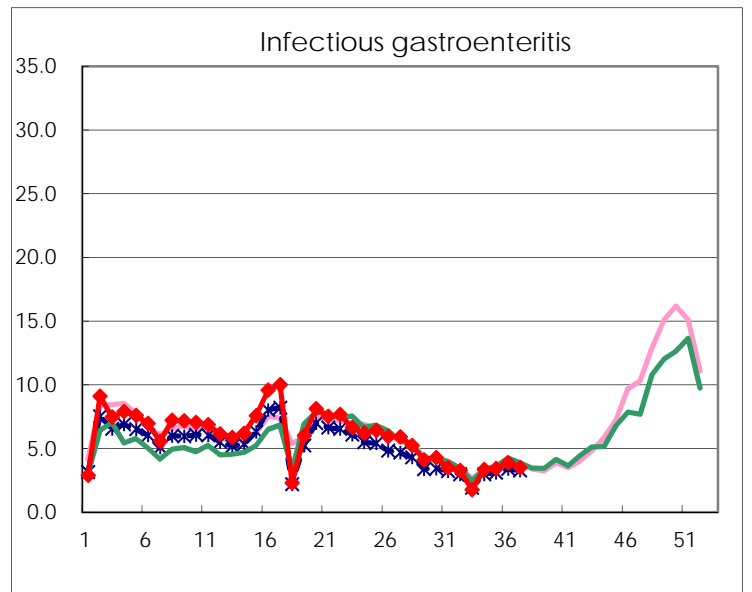
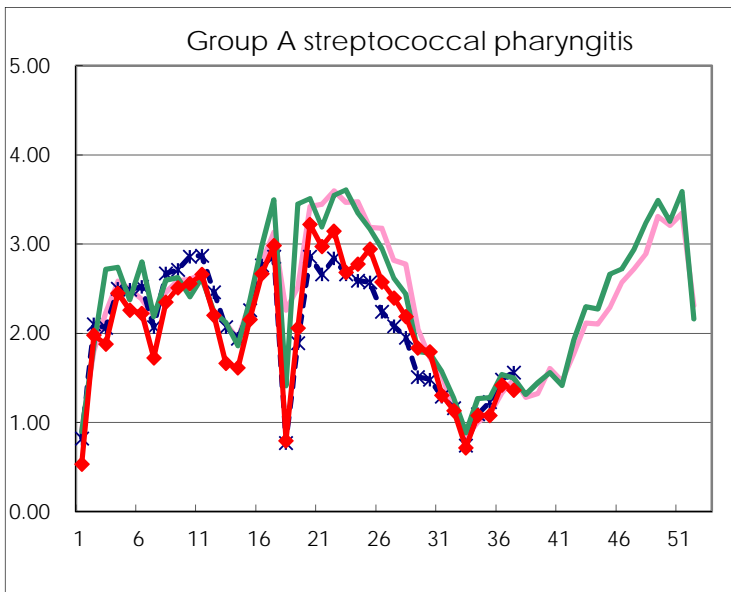
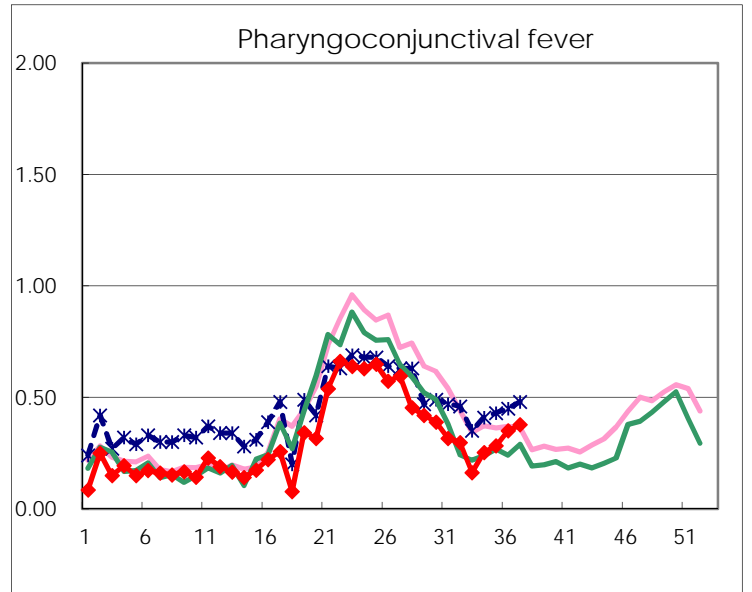
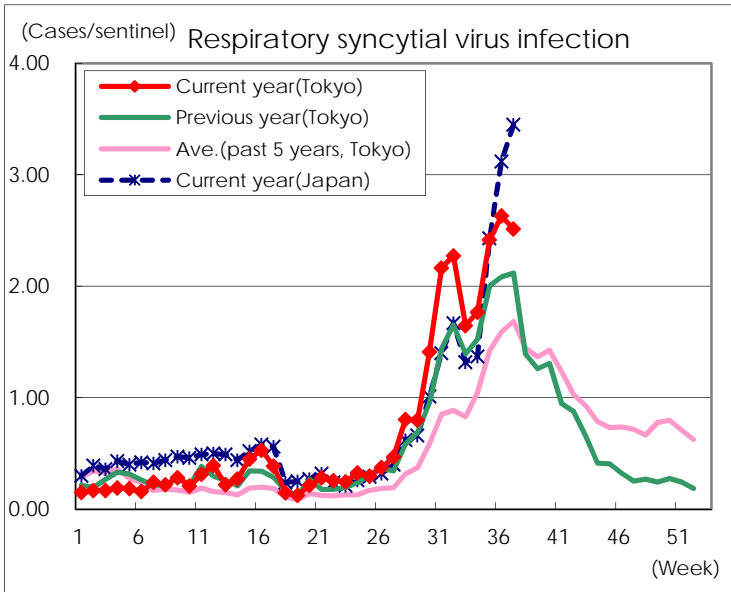
Category	Diseases	Tokyo					Japan	
		34th	35th	36th	37th	Cum 2019	37th	Cum 2019
V	Amebiasis	4	1	3	4	121	16	625
	Viral hepatitis(excluding hepatitis A and E)	2	2	1	2	72	6	237
	CRE infection	6	7	5	10	146	35	1,512
	Acute Flaccid Paralysis (excluding Acute poliomyelitis)				1	4	1	56
	Acute encephalitis(excluding JE and WNE)	3	1	1		59	9	649
	Cryptosporidiosis		1	1		4	1	15
	Creutzfeldt-Jakob disease					13		134
	Severe invasive streptococcal infections(TSLs)	2	3	1		90	4	666
	Acquired immunodeficiency syndrome (AIDS)	4	9	8	4	274	12	830
	Giardiasis		1			5		33
	Invasive <i>Haemophilus influenzae</i> disease	3		1		63	1	412
	Invasive meningococcal disease					2	1	34
	Invasive pneumococcal disease	4	6	8	2	276	16	2,376
	Varicella (limited to hospitalized case)		2	3	3	52	4	342
	Congenital rubella syndrome					1		3
	Syphilis	40	33	31	43	1,242	82	4,713
	Disseminated cryptococcosis					9	2	105
	Tetanus					5	2	94
	Vancomycin-resistant <i>S. aureus</i> infection							
	Vancomycin-resistant <i>Enterococcus</i> infection				1	6	2	54
	Pertussis	19	30	26	22	1,042	264	12,310
Rubella	13	9	10	4	831	10	2,190	
Measles			1		105	2	685	
MDRA infection					2		23	

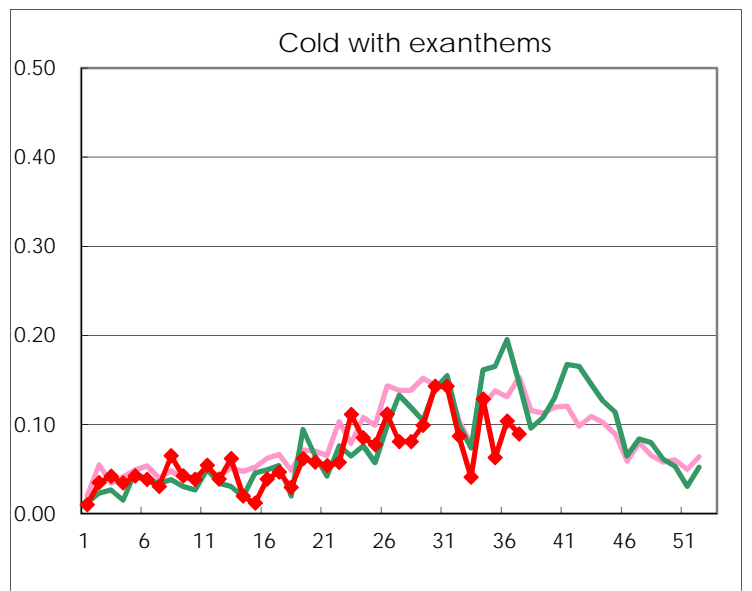
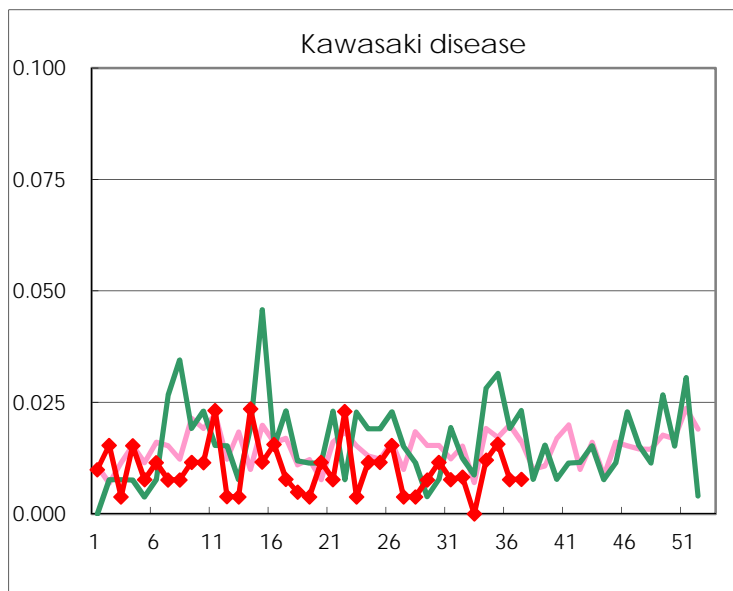
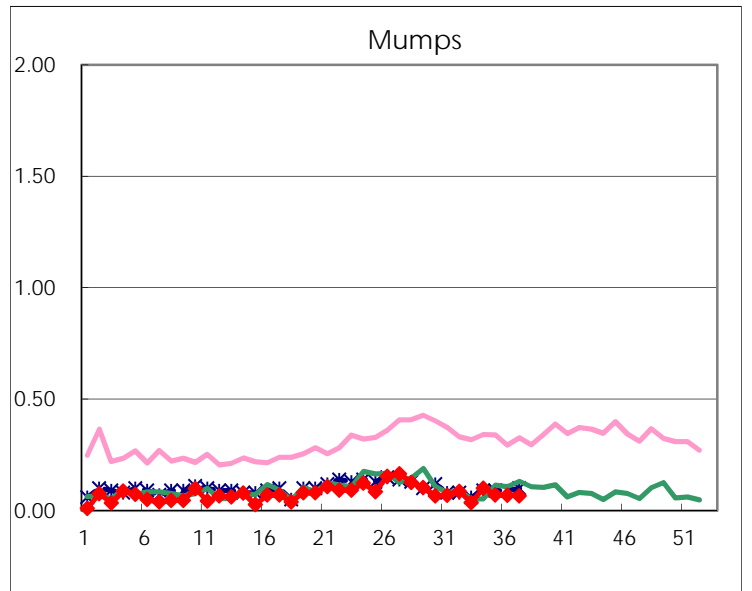
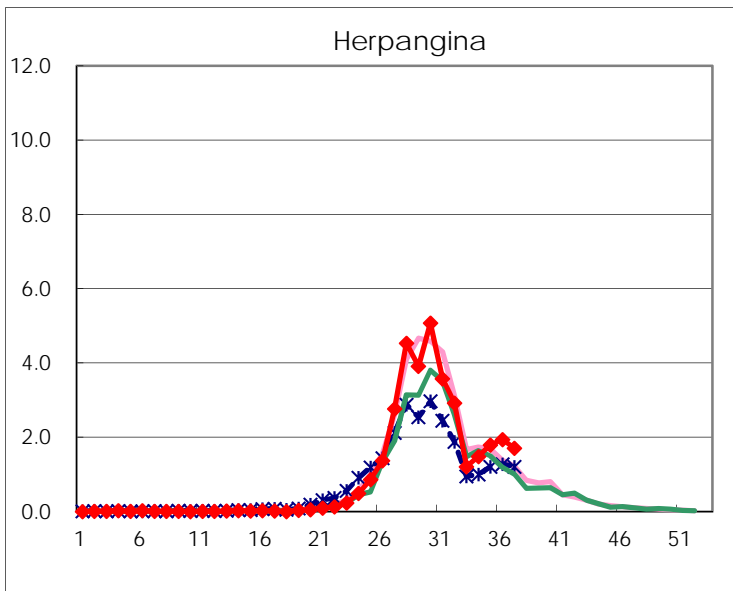
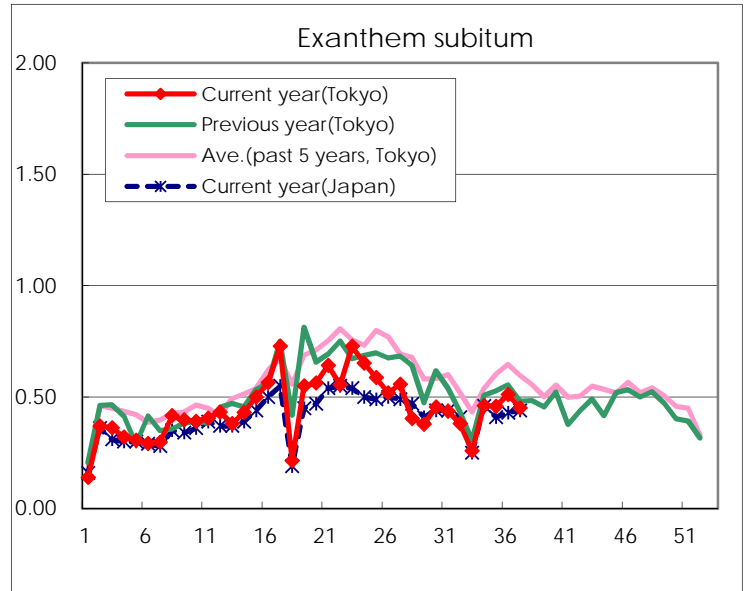
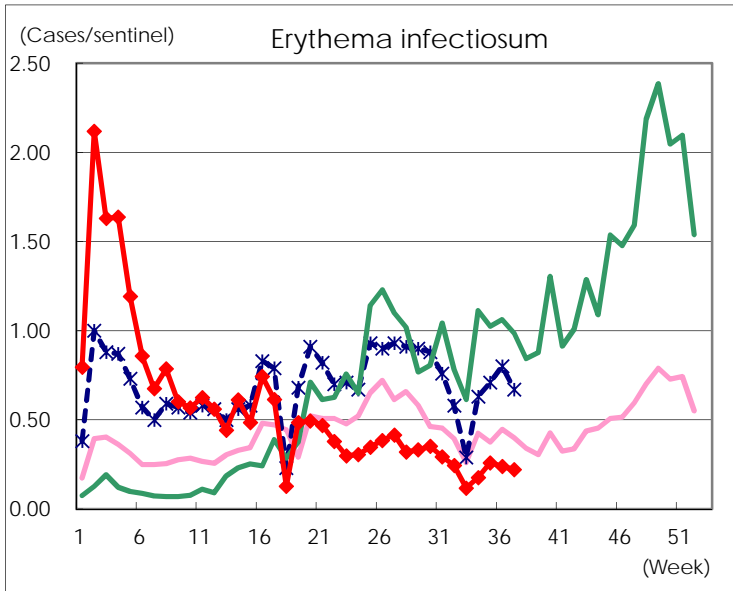
Number of patients with the diseases to be reported
by the designated clinics and hospitals

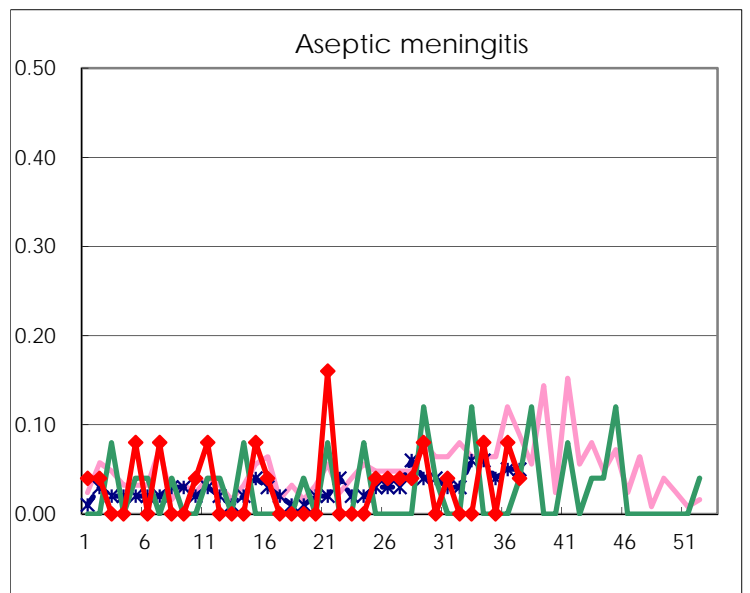
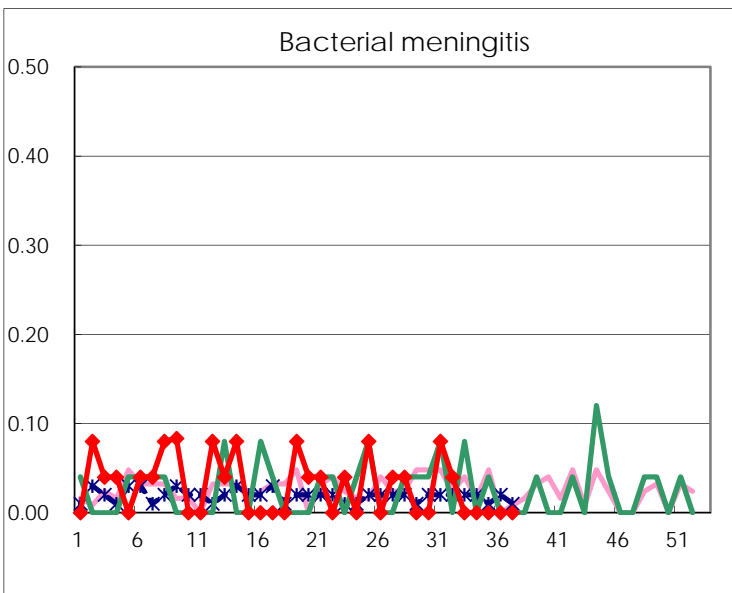
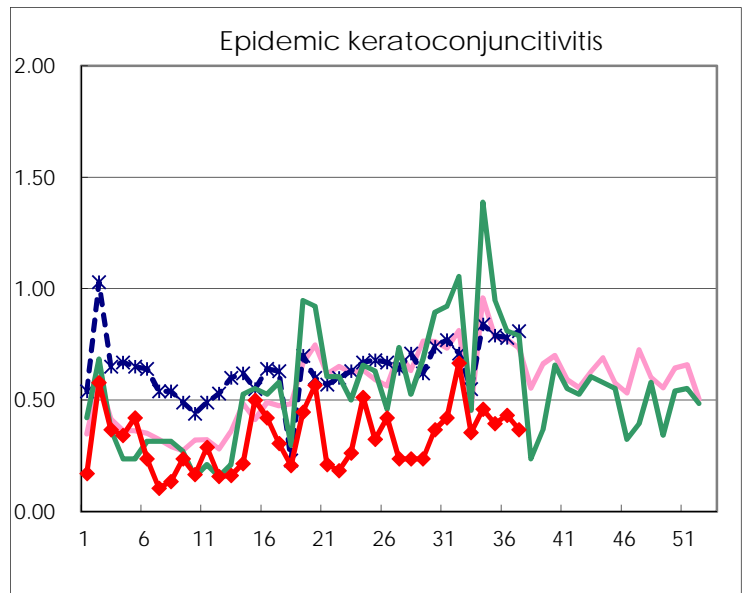
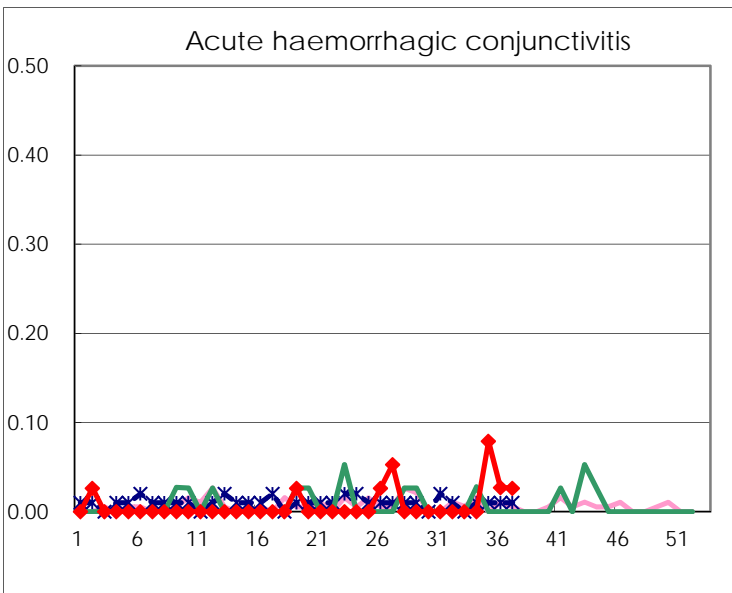
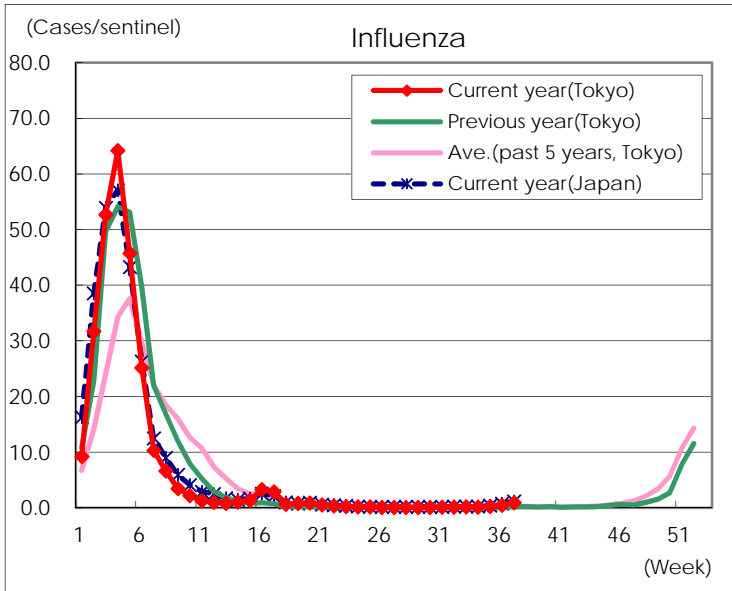
Diseases	Tokyo				
	34th	35th	36th	37th	/sentinel
Respiratory syncytial virus infection	440	616	684	646	2.51
Pharyngoconjunctival fever	63	72	91	97	0.38
Group A streptococcal pharyngitis	268	275	369	350	1.36
Infectious gastroenteritis	835	872	1,007	900	3.50
Chickenpox	63	48	39	45	0.18
Hand, foot, and mouth disease	703	649	682	681	2.65
Erythema infectiosum	44	66	62	57	0.22
Exanthem subitum	115	117	133	116	0.45
Herpangina	370	458	505	438	1.70
Mumps	25	18	18	17	0.07
Kawasaki disease	3	4	2	2	0.01
Cold with exanthems	32	16	27	23	0.09
Influenza	51	100	202	387	0.95
Acute hemorrhagic conjunctivitis		3	1	1	0.03
Epidemic keratoconjunctivitis	17	15	16	14	0.37
Bacterial meningitis					
Aseptic meningitis	2		2	1	0.04
<i>Mycoplasma pneumoniae</i>	5	10	12	12	0.48
Chlamydial pneumonia (excluding psittacosis)			1	1	0.04
Infectious gastroenteritis (only by Rotavirus)			1		
Influenza-Associated Hospitalizations	1	2		2	0.08

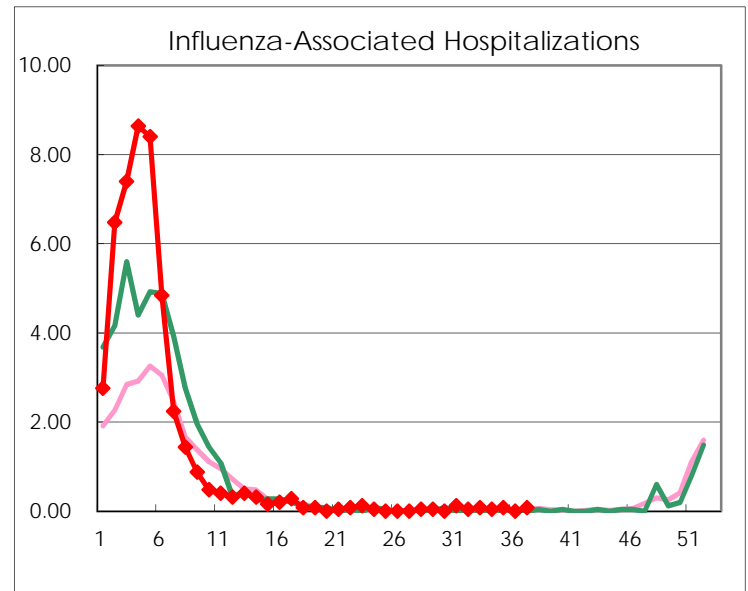
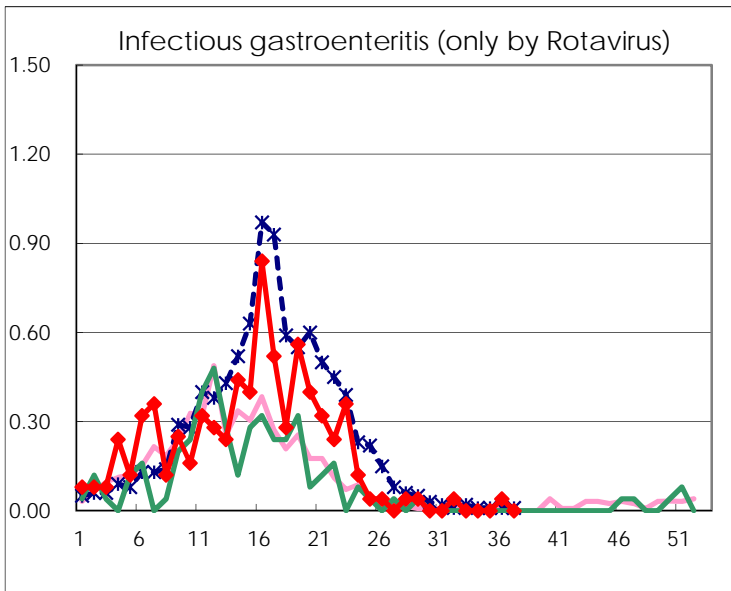
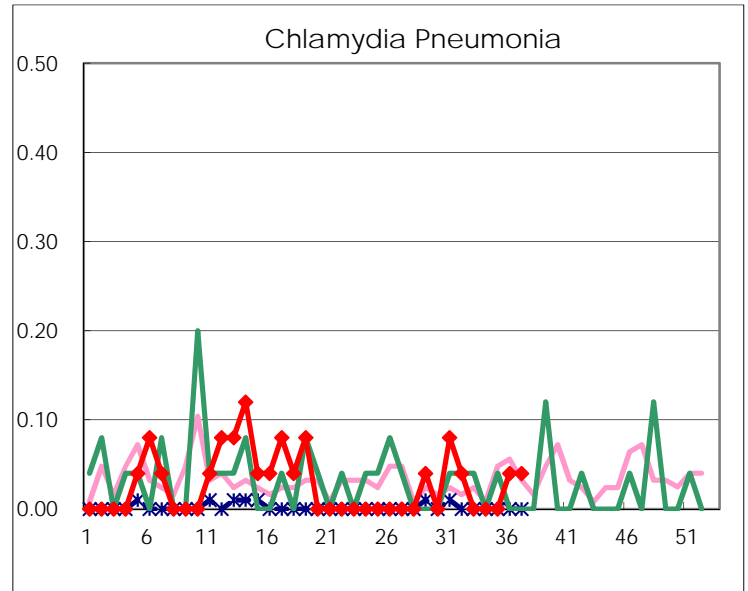
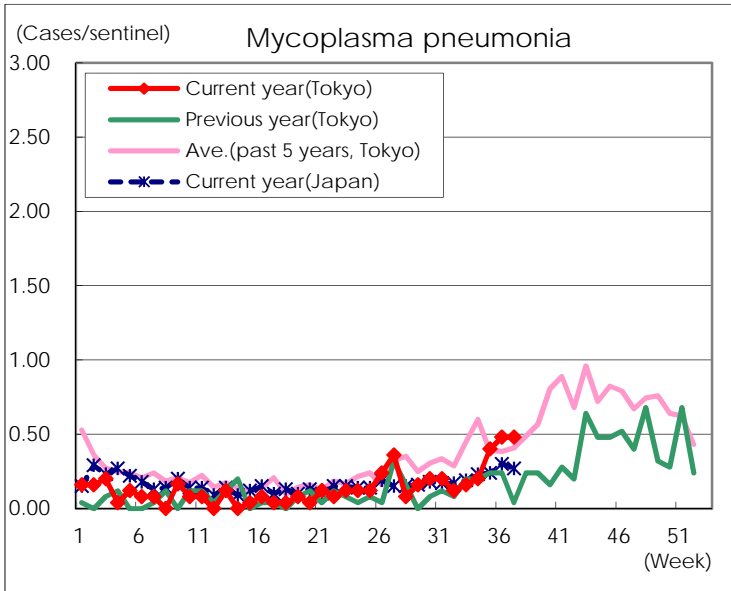
(Blank means 0.)

Disease Trend Graph (weekly reported cases per sentinel in comparison)









Number of sentinel facilities for weekly reporting		
Types of sentinels	Number of sentinels	Sentinels having reported
Pediatric	264	257
Influenza	419	408
Ophthalmic	39	38
Specially-designated	25	25