

**26 September 2019 / Number 38**

## Surveillance System in Tokyo, Japan

The infectious diseases which all physicians must report

All physicians must report to health centers the incidence of the diseases which are shown at page one. Health centers electronically report the individual cases to Tokyo Metropolitan Infectious Disease Surveillance Center.

The infectious diseases required to be reported by the sentinels

The numbers of patients who visit the sentinel clinics or hospitals during a week are reported to health centers in Tokyo. And they electronically report the numbers to Tokyo Metropolitan Infectious Disease Surveillance Center. We have about 500 sentinel clinics and hospitals in Tokyo.

Tokyo Metropolitan Institute of Public Health

TEL:81-3-3363-3213 FAX:81-3-5332-7365

e-mail:[www@tokyo-eiken.go.jp](mailto:www@tokyo-eiken.go.jp)

URL:[idsc.tokyo-eiken.go.jp/](http://idsc.tokyo-eiken.go.jp/)

---

Number of patients with the diseases which all physicians must report

Category	Diseases	Tokyo					Japan	
		35th	36th	37th	38th	Cum 2019	38th	Cum 2019
I	Ebola hemorrhagic fever							
	Crimean-Congo hemorrhagic fever							
	Smallpox							
	South American hemorrhagic fever							
	Plague							
	Marburg disease							
	Lassa fever							
II	Acute poliomyelitis							
	Tuberculosis	61	52	65	58	2,319	311	15,609
	Diphtheria							
	Severe Acute Respiratory Syndrome(SARS)							
	Middle East Respiratory Syndrome (MERS)							
	Avian influenza H5N1							
	Avian influenza H7N9							
III	Cholera					2		4
	Shigellosis			1		15	1	73
	Enterohemorrhagic Escherichia coli infection	15	25	17	17	283	67	2,746
	Typhoid fever					3	3	31
	Paratyphoid fever					3		12
IV	Hepatitis E	1	6	2	3	98	3	378
	West Nile fever							
	Hepatitis A	4	4	1	2	117	9	348
	Echinococcosis							15
	Yellow fever							
	Psittacosis					3		13
	Omsk hemorrhagic fever							
	Relapsing fever							4
	Kyasanur forest disease							
	Q fever							
	Rabies							
	Coccidioidomycosis							2
	Monkeypox							
	Zika virus infection							1
	Severe Fever with Thrombocytopenia Syndrome					1	5	79
	Hemorrhagic fever with renal syndrome							
	Western equine encephalitis							
	Tick-borne encephalitis							
	Anthrax							
	Chikungunya fever		1			3	2	32
	Scrub typhus(Tsutsugamushi disease)							84
	Dengue fever	6	4	2	3	88	12	328
	Eastern equine encephalitis							
	Avian influenza (excluding H5N1 and H7N9)							
	Nipah virus infection							
	Japanese spotted fever						13	181
	Japanese encephalitis						1	1
	Hantavirus pulmonary syndrome							
	Herpes B virus infection							
	Glanders							
	Brucellosis					1		2
	Venezuelan equine encephalitis							
	Hendra virus infection							
	Epidemic typhus							
	Botulism							1
Malaria	1	3	1		14	1	44	
Tularemia								
Lyme disease							11	
Lyssavirus infection(excluding rabies)								
Rift valley fever								
Melioidosis						1	2	
Legionellosis	6	3	5	4	139	55	1,720	
Leptospirosis	1		2		5	1	15	
Rocky mountain spotted fever								

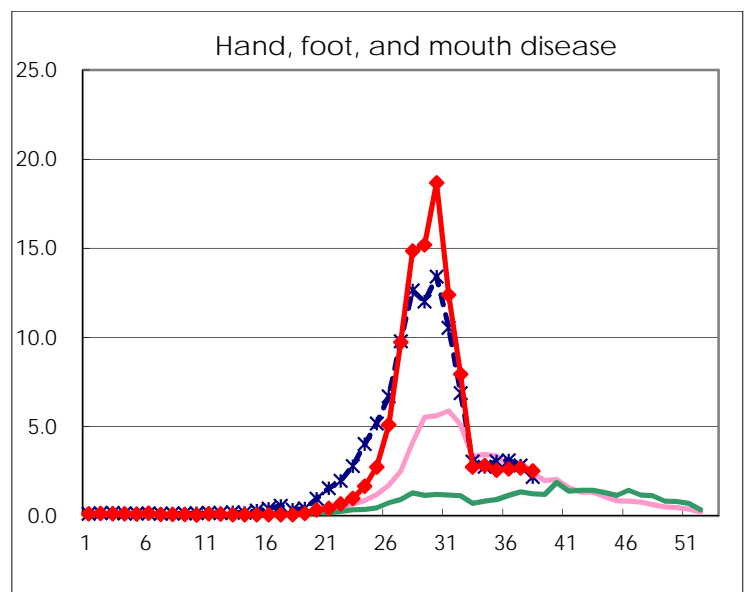
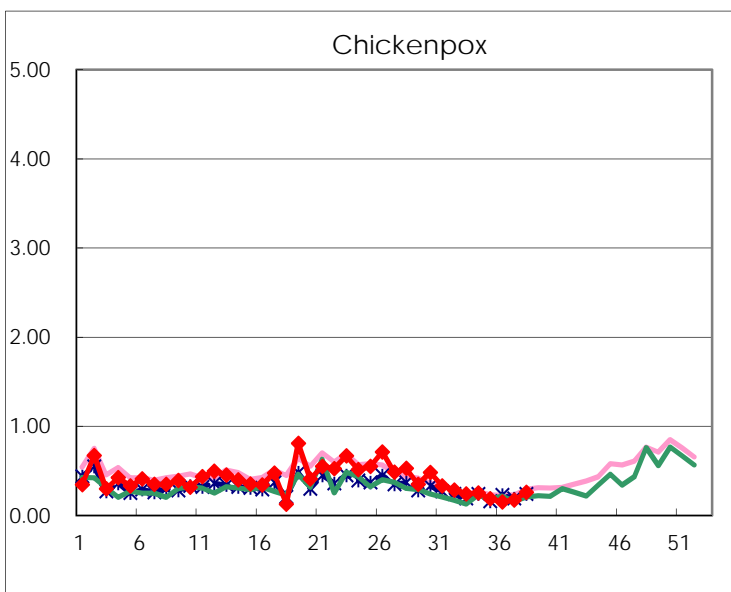
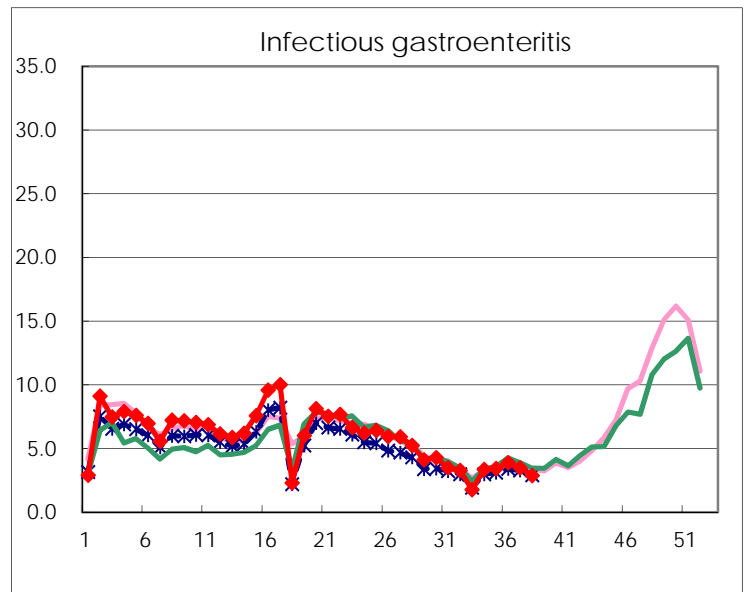
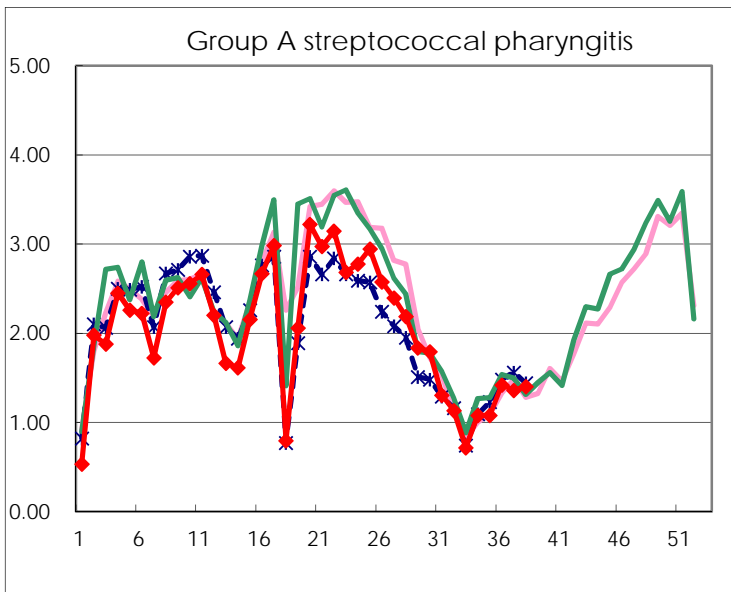
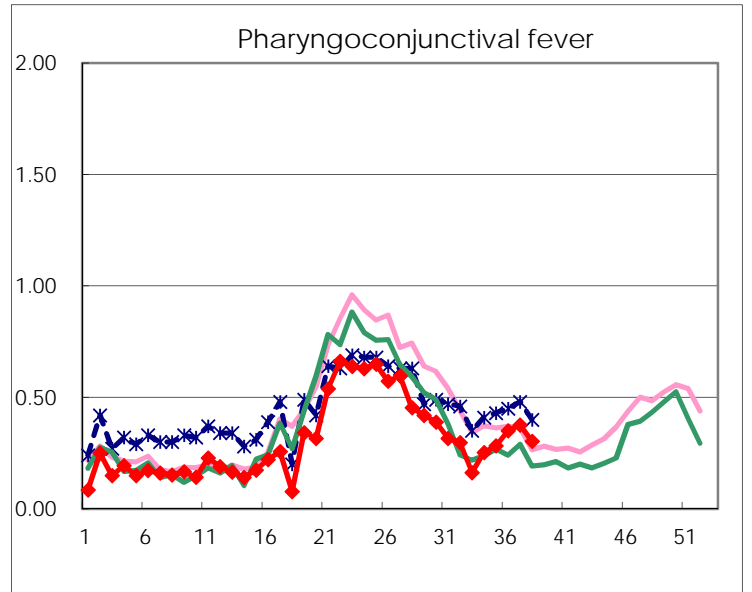
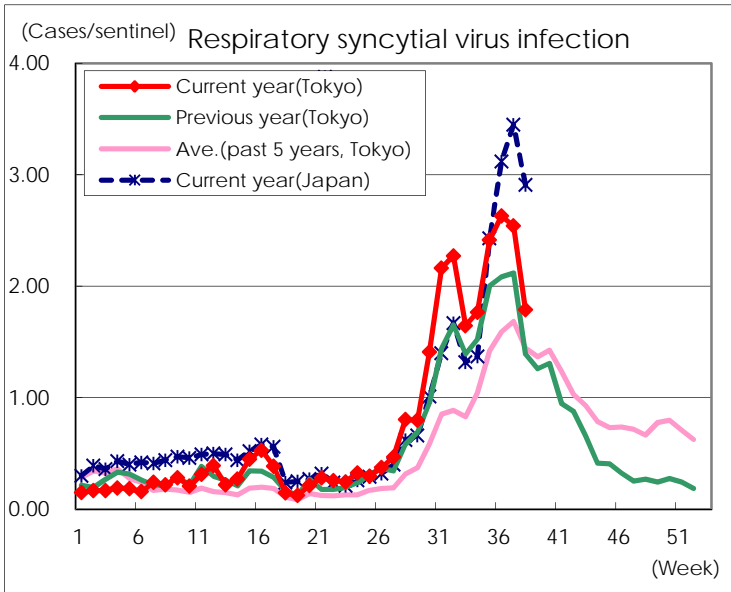
Category	Diseases	Tokyo					Japan	
		35th	36th	37th	38th	Cum 2019	38th	Cum 2019
V	Amebiasis	1	3	4	1	122	11	642
	Viral hepatitis(excluding hepatitis A and E)	2	1	2	2	74	6	244
	CRE infection	7	5	10	5	151	34	1,562
	Acute Flaccid Paralysis (excluding Acute poliomyelitis)			1		4		57
	Acute encephalitis(excluding JE and WNE)	1	1	1	1	61	5	658
	Cryptosporidiosis	1	1			4		16
	Creutzfeldt-Jakob disease				1	14	1	138
	Severe invasive streptococcal infections(TSLs)	3	1		1	91	4	671
	Acquired immunodeficiency syndrome (AIDS)	9	8	4	7	281	12	856
	Giardiasis	1				5		33
	Invasive <i>Haemophilus influenzae</i> disease		1	1	1	65	7	424
	Invasive meningococcal disease					2	1	35
	Invasive pneumococcal disease	6	8	2	3	279	19	2,405
	Varicella (limited to hospitalized case)	2	3	3	3	55	5	356
	Congenital rubella syndrome					1		3
	Syphilis	33	31	43	23	1,265	59	4,824
	Disseminated cryptococcosis					9		105
	Tetanus				1	6		96
	Vancomycin-resistant <i>S. aureus</i> infection							
	Vancomycin-resistant <i>Enterococcus</i> infection			1		6	1	55
	Pertussis	30	26	22	21	1,063	218	12,669
Rubella	9	10	5	1	833	6	2,196	
Measles		1		2	107	8	693	
MDRA infection					2		24	

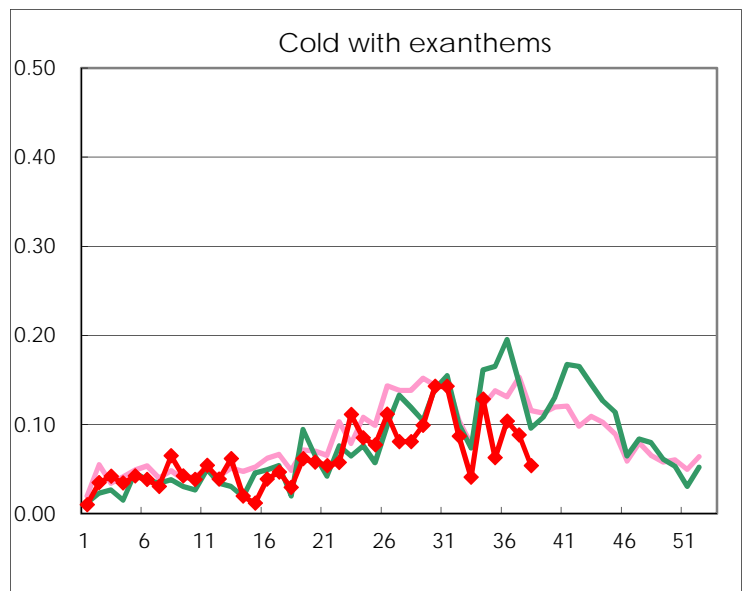
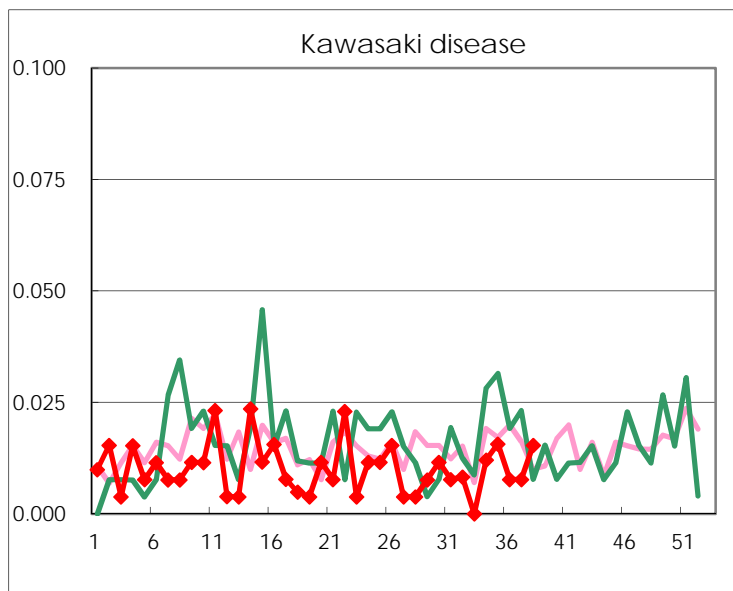
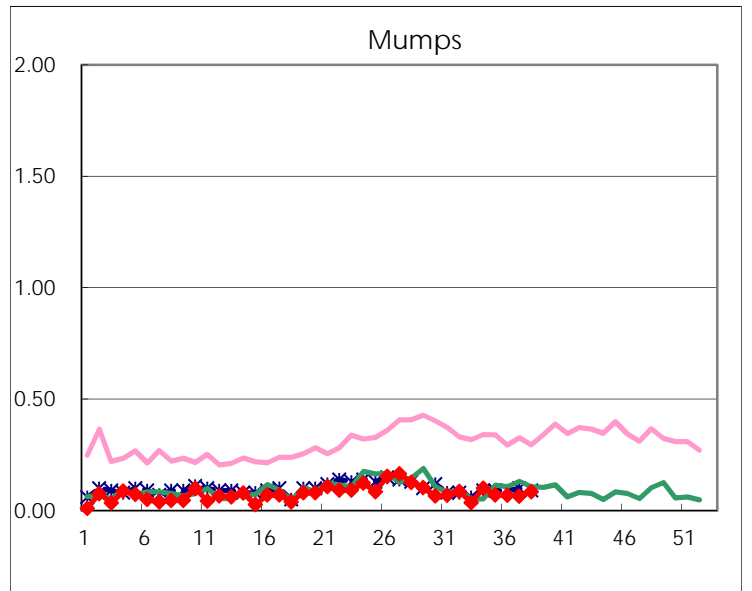
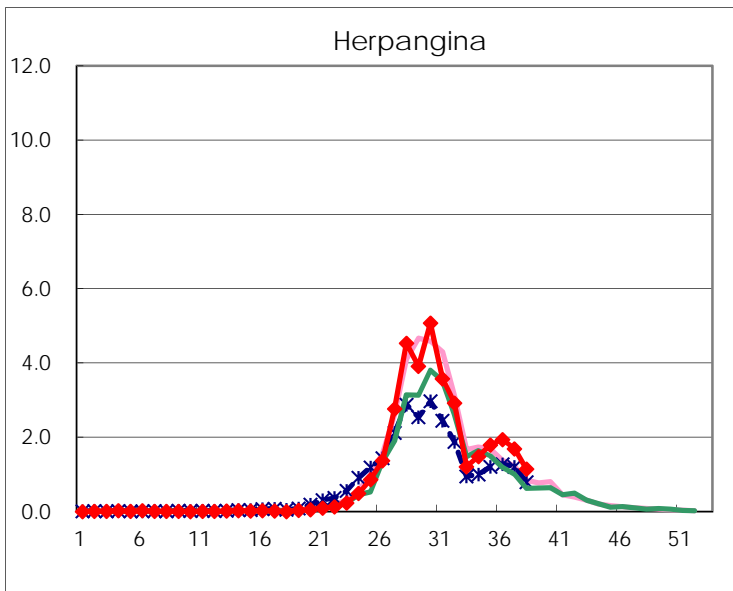
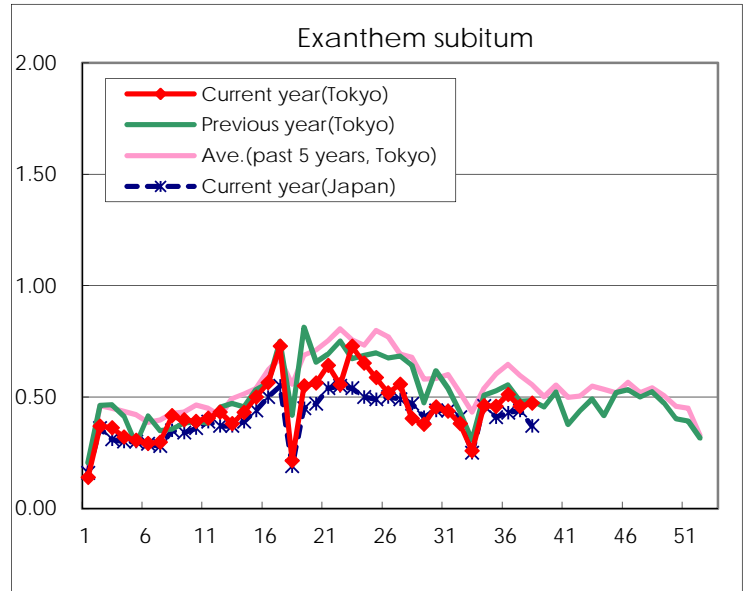
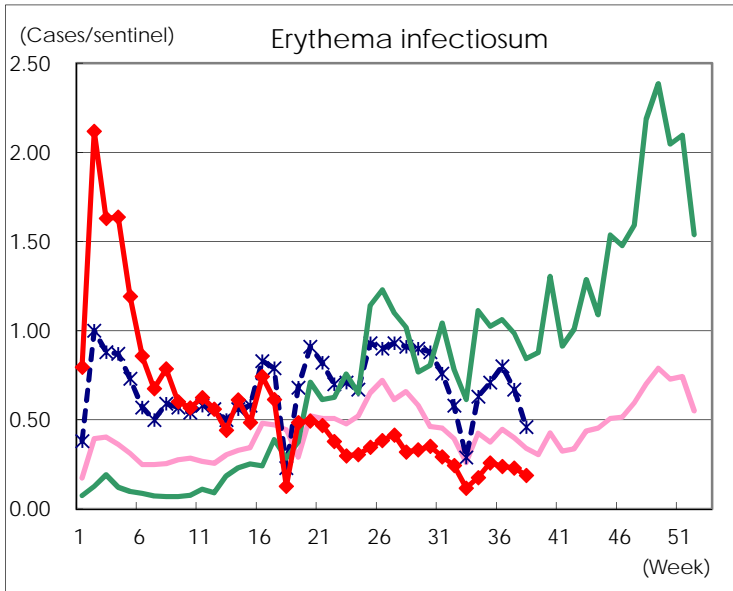
Number of patients with the diseases to be reported  
by the designated clinics and hospitals

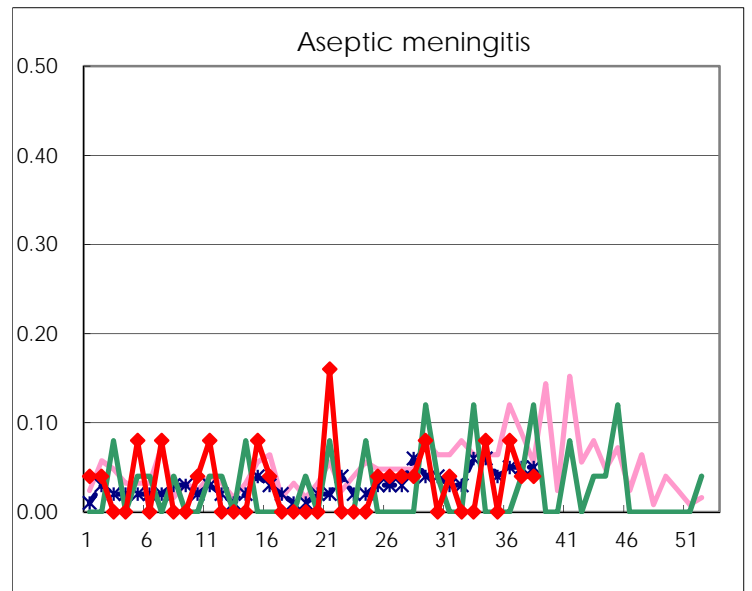
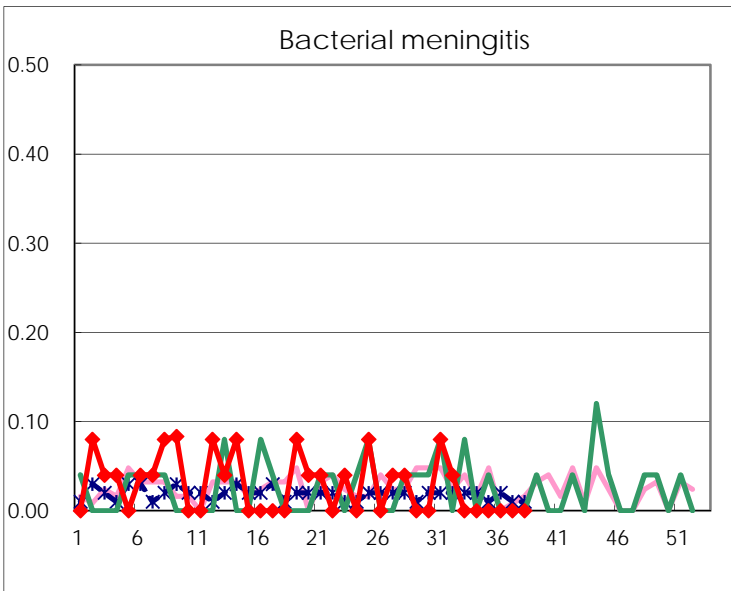
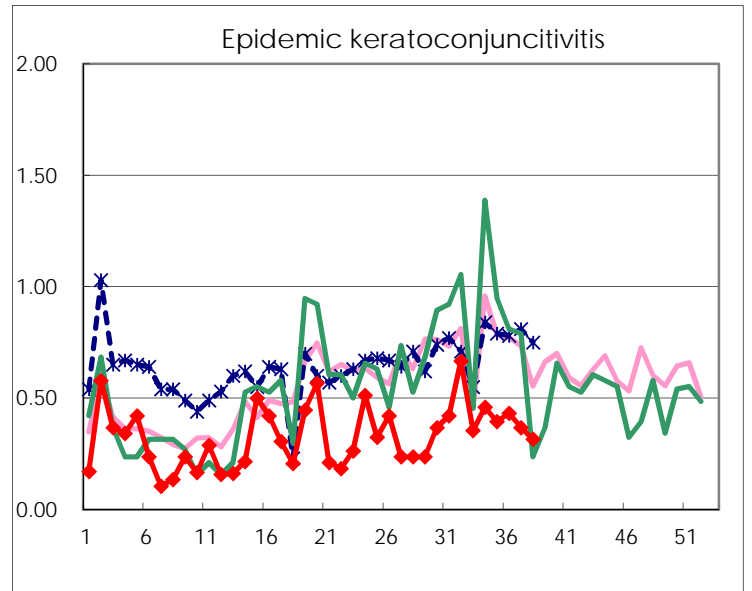
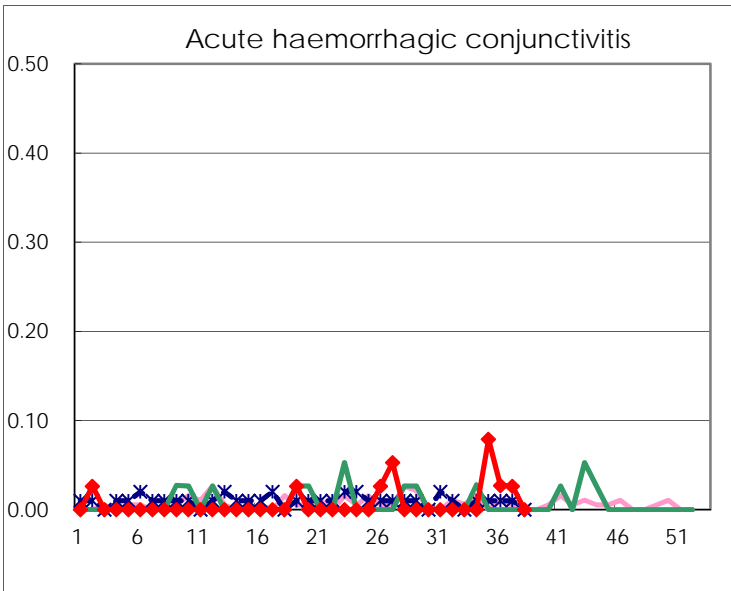
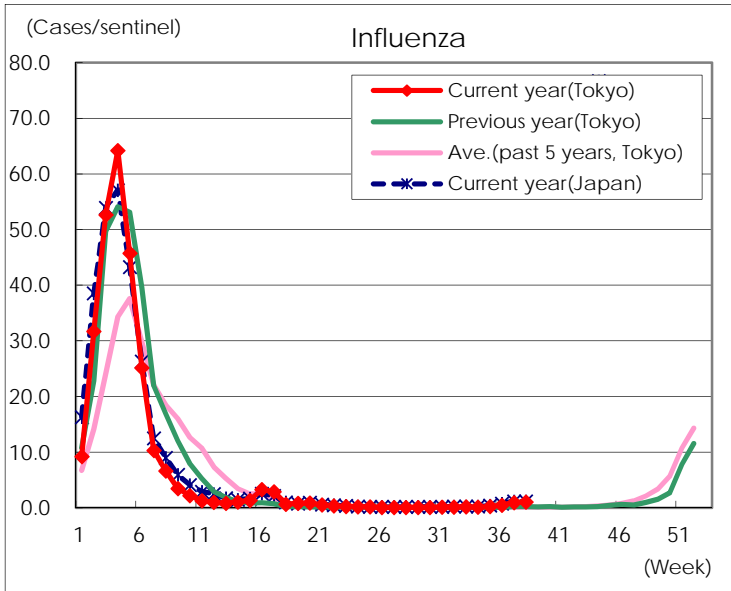
Diseases	Tokyo				
	35th	36th	37th	38th	/sentinel
Respiratory syncytial virus infection	616	684	661	465	1.79
Pharyngoconjunctival fever	72	91	98	79	0.30
Group A streptococcal pharyngitis	275	369	353	364	1.40
Infectious gastroenteritis	872	1,007	905	746	2.87
Chickenpox	48	39	45	67	0.26
Hand, foot, and mouth disease	649	682	696	653	2.51
Erythema infectiosum	66	62	60	49	0.19
Exanthem subitum	117	133	119	123	0.47
Herpangina	458	505	440	298	1.15
Mumps	18	18	17	22	0.08
Kawasaki disease	4	2	2	4	0.02
Cold with exanthems	16	27	23	14	0.05
Influenza	100	202	387	436	1.06
Acute hemorrhagic conjunctivitis	3	1	1		
Epidemic keratoconjunctivitis	15	16	14	12	0.32
Bacterial meningitis					
Aseptic meningitis		2	1	1	0.04
<i>Mycoplasma pneumoniae</i>	10	12	12	10	0.40
Chlamydial pneumonia (excluding psittacosis)		1	1	3	0.12
Infectious gastroenteritis (only by Rotavirus)		1			
Influenza-Associated Hospitalizations	2		3	4	0.16

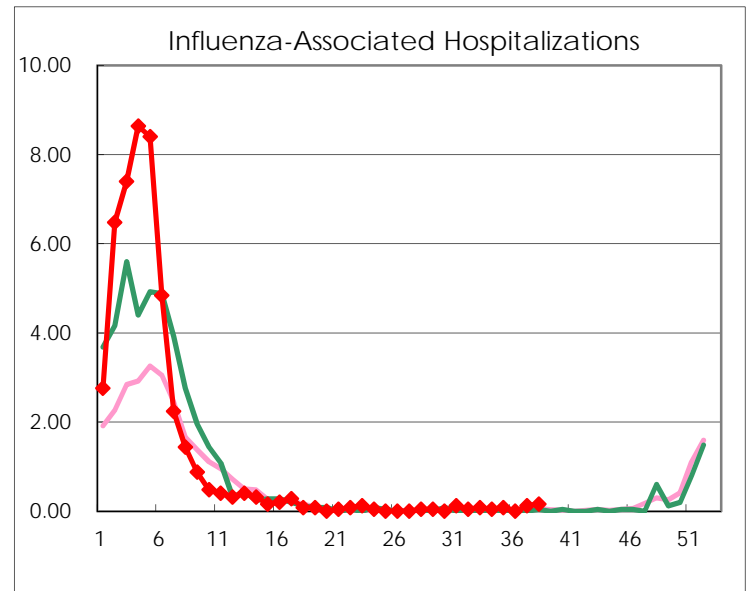
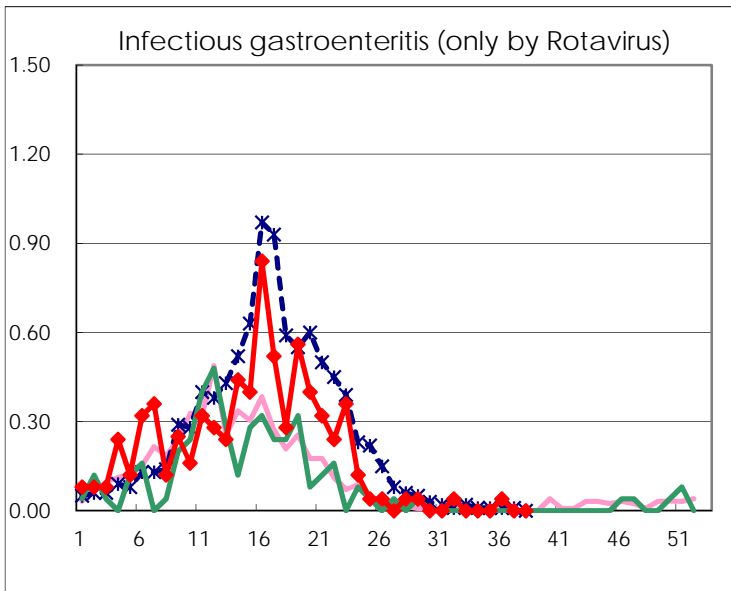
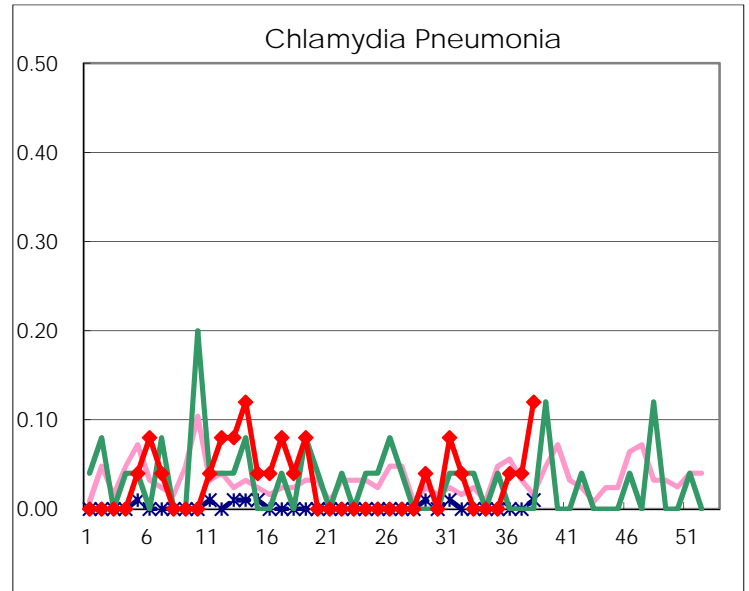
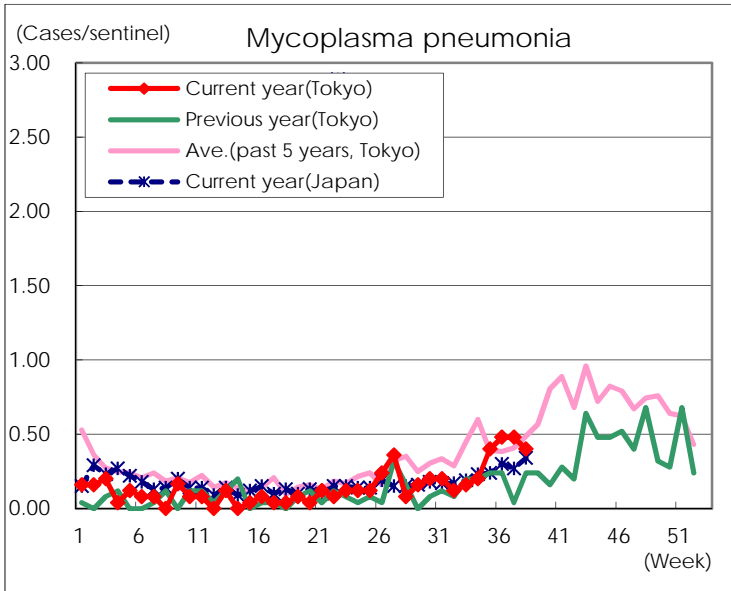
( Blank means 0. )

# Disease Trend Graph (weekly reported cases per sentinel in comparison)









Number of sentinel facilities for weekly reporting		
Types of sentinels	Number of sentinels	Sentinels having reported
Pediatric	264	260
Influenza	419	411
Ophthalmic	39	38
Specially-designated	25	25