

3 October 2019 / Number 39

Surveillance System in Tokyo, Japan

The infectious diseases which all physicians must report

All physicians must report to health centers the incidence of the diseases which are shown at page one. Health centers electronically report the individual cases to Tokyo Metropolitan Infectious Disease Surveillance Center.

The infectious diseases required to be reported by the sentinels

The numbers of patients who visit the sentinel clinics or hospitals during a week are reported to health centers in Tokyo. And they electronically report the numbers to Tokyo Metropolitan Infectious Disease Surveillance Center. We have about 500 sentinel clinics and hospitals in Tokyo.

Tokyo Metropolitan Institute of Public Health

TEL:81-3-3363-3213 FAX:81-3-5332-7365

e-mail:www@tokyo-eiken.go.jp

URL:idsc.tokyo-eiken.go.jp/

Number of patients with the diseases which all physicians must report

Category	Diseases	Tokyo					Japan	
		36th	37th	38th	39th	Cum 2019	39th	Cum 2019
I	Ebola hemorrhagic fever							
	Crimean-Congo hemorrhagic fever							
	Smallpox							
	South American hemorrhagic fever							
	Plague							
	Marburg disease							
	Lassa fever							
II	Acute poliomyelitis							
	Tuberculosis	53	70	63	38	2,369	265	15,992
	Diphtheria							
	Severe Acute Respiratory Syndrome(SARS)							
	Middle East Respiratory Syndrome (MERS)							
	Avian influenza H5N1							
	Avian influenza H7N9							
III	Cholera					2		4
	Shigellosis		1			15		74
	Enterohemorrhagic Escherichia coli infection	25	17	17	25	308	134	2,900
	Typhoid fever					3	1	32
	Paratyphoid fever					3	1	13
IV	Hepatitis E	6	2	3	3	101	4	383
	West Nile fever							
	Hepatitis A	4	1	2	3	120	6	357
	Echinococcosis						1	16
	Yellow fever							
	Psittacosis					3		13
	Omsk hemorrhagic fever							
	Relapsing fever							4
	Kyasanur forest disease							
	Q fever							
	Rabies							
	Coccidioidomycosis							2
	Monkeypox							
	Zika virus infection							1
	Severe Fever with Thrombocytopenia Syndrome					1		80
	Hemorrhagic fever with renal syndrome							
	Western equine encephalitis							
	Tick-borne encephalitis							
	Anthrax							
	Chikungunya fever	1			3	6	4	37
	Scrub typhus(Tsutsugamushi disease)							84
	Dengue fever	5	2	3	3	92	18	349
	Eastern equine encephalitis							
	Avian influenza (excluding H5N1 and H7N9)							
	Nipah virus infection							
	Japanese spotted fever						3	187
	Japanese encephalitis						1	2
	Hantavirus pulmonary syndrome							
	Herpes B virus infection							
	Glanders							
	Brucellosis					1		2
	Venezuelan equine encephalitis							
	Hendra virus infection							
Epidemic typhus								
Botulism							1	
Malaria	3	1			14		44	
Tularemia								
Lyme disease							11	
Lyssavirus infection(excluding rabies)								
Rift valley fever								
Melioidosis							2	
Legionellosis	3	5	4	7	146	53	1,781	
Leptospirosis		3			6		16	
Rocky mountain spotted fever								

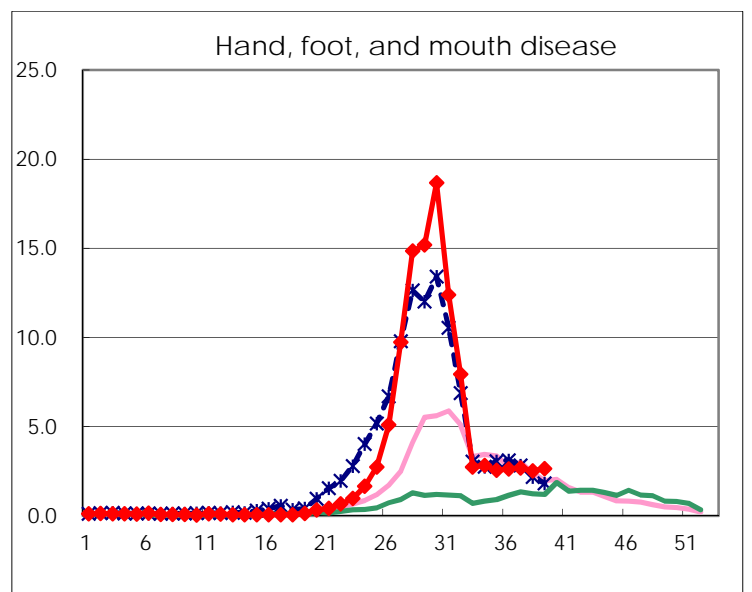
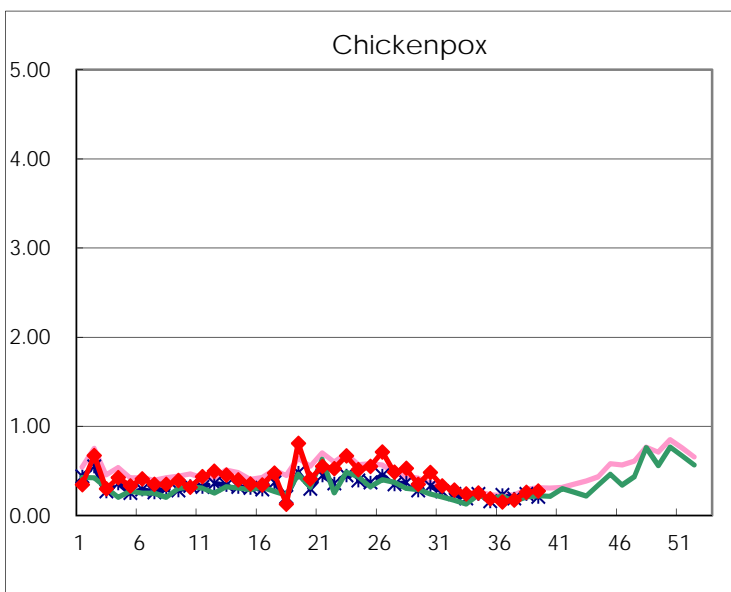
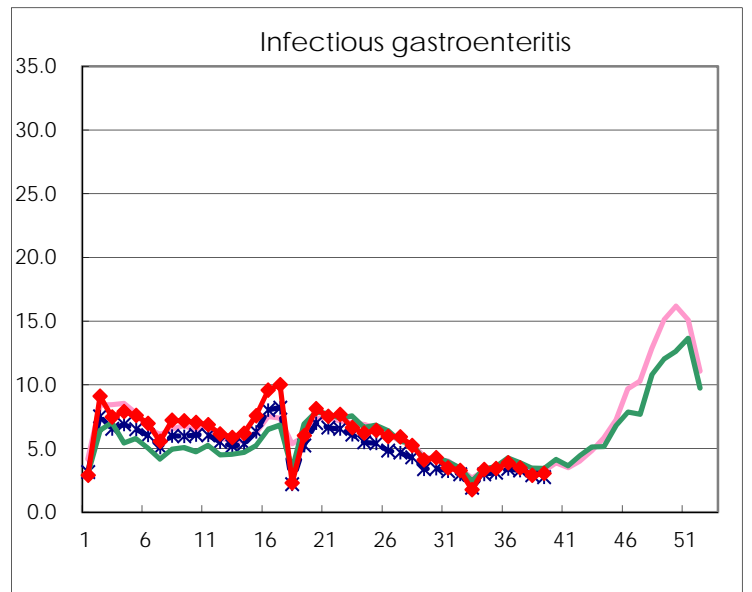
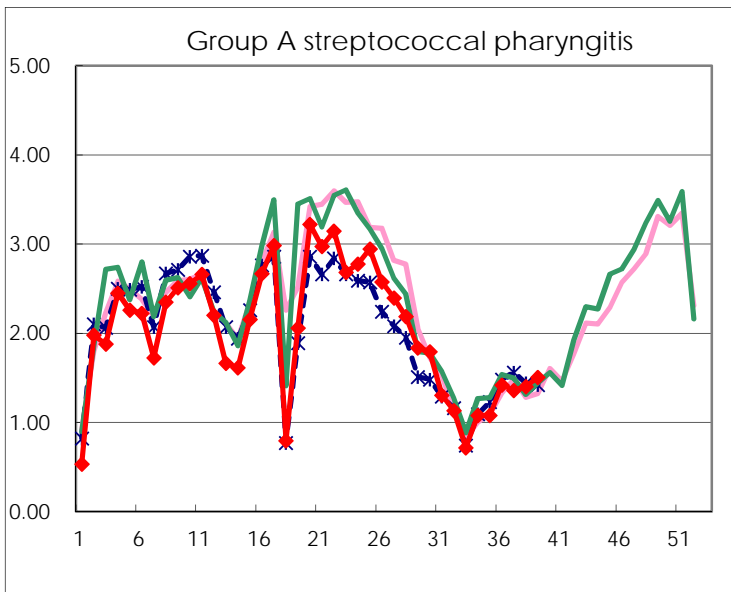
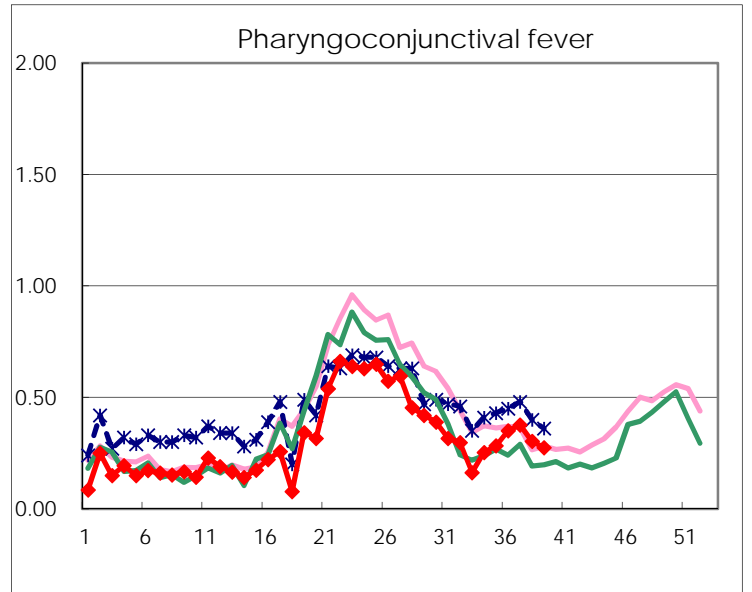
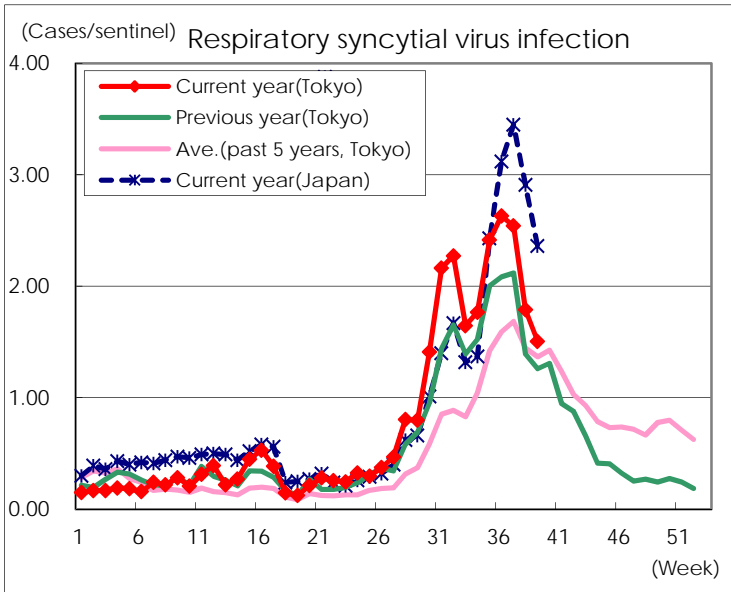
Category	Diseases	Tokyo					Japan	
		36th	37th	38th	39th	Cum 2019	39th	Cum 2019
V	Amebiasis	3	4	1	4	126	8	659
	Viral hepatitis(excluding hepatitis A and E)	1	2	2	1	75	8	256
	CRE infection	5	10	5	3	154	32	1,617
	Acute Flaccid Paralysis (excluding Acute poliomyelitis)		1			4	2	60
	Acute encephalitis(excluding JE and WNE)	1	1	1	2	63	5	671
	Cryptosporidiosis	1				4		16
	Creutzfeldt-Jakob disease			1		14	2	143
	Severe invasive streptococcal infections(TSLs)	1		1	3	94	8	687
	Acquired immunodeficiency syndrome (AIDS)	8	4	7	9	290	13	880
	Giardiasis					5	1	34
	Invasive <i>Haemophilus influenzae</i> disease	1	1	1		65	6	430
	Invasive meningococcal disease		1		1	4	1	37
	Invasive pneumococcal disease	8	2	3	5	284	18	2,434
	Varicella (limited to hospitalized case)	3	3	3		55	3	360
	Congenital rubella syndrome					1		3
	Syphilis	31	43	24	28	1,294	71	4,954
	Disseminated cryptococcosis					9	3	109
	Tetanus			1		6	2	98
	Vancomycin-resistant <i>S. aureus</i> infection							
	Vancomycin-resistant <i>Enterococcus</i> infection		1			6	2	57
	Pertussis	26	22	21	19	1,082	211	12,997
	Rubella	10	5	1	4	837	13	2,210
Measles	1		2	4	111	15	707	
MDRA infection					2		24	

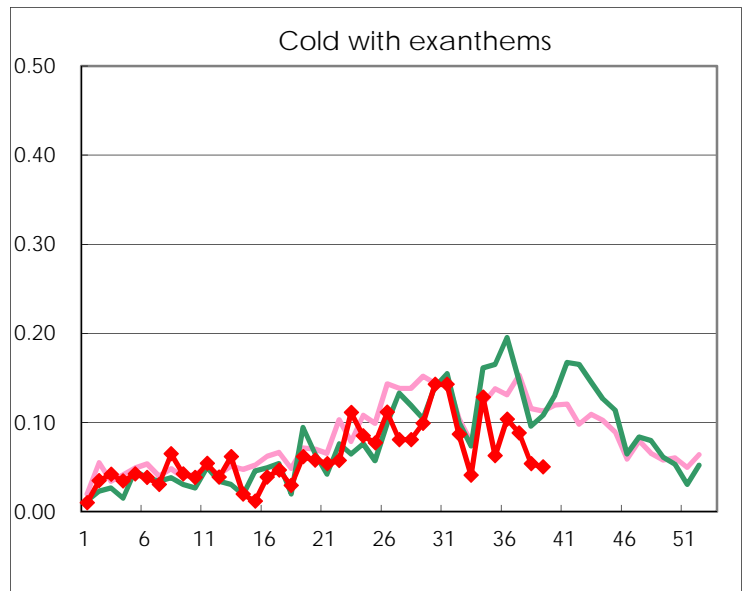
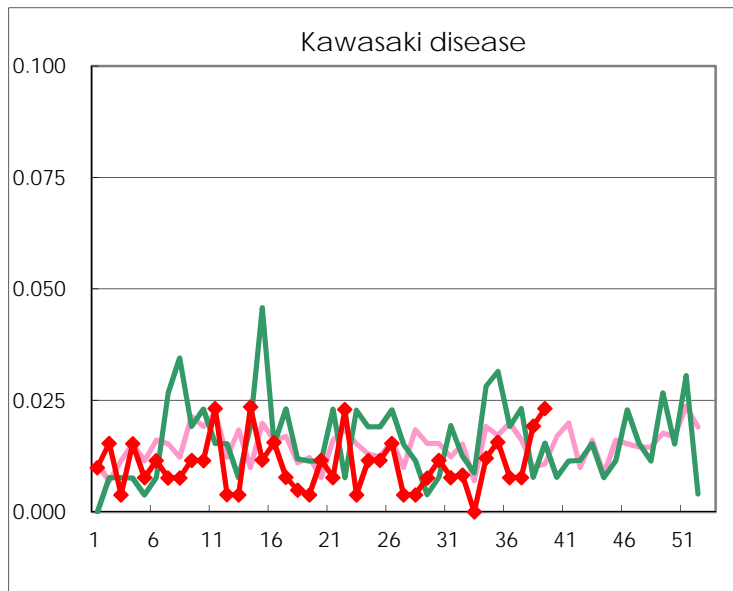
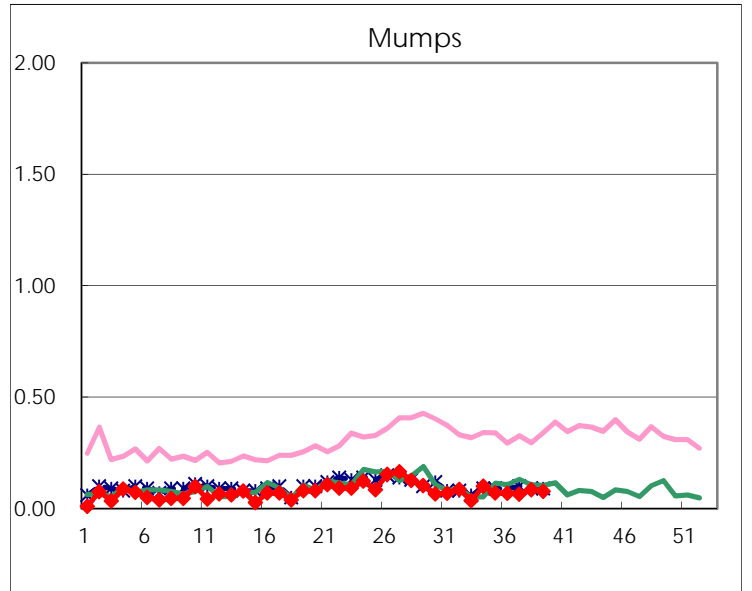
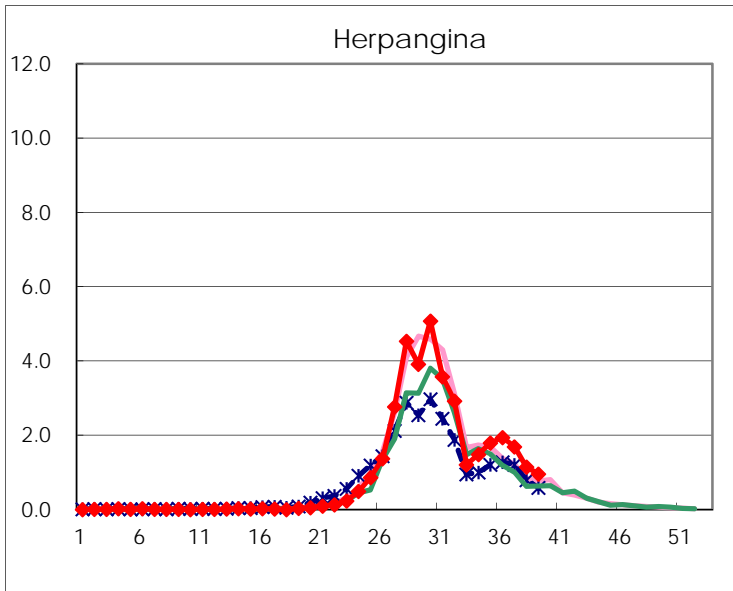
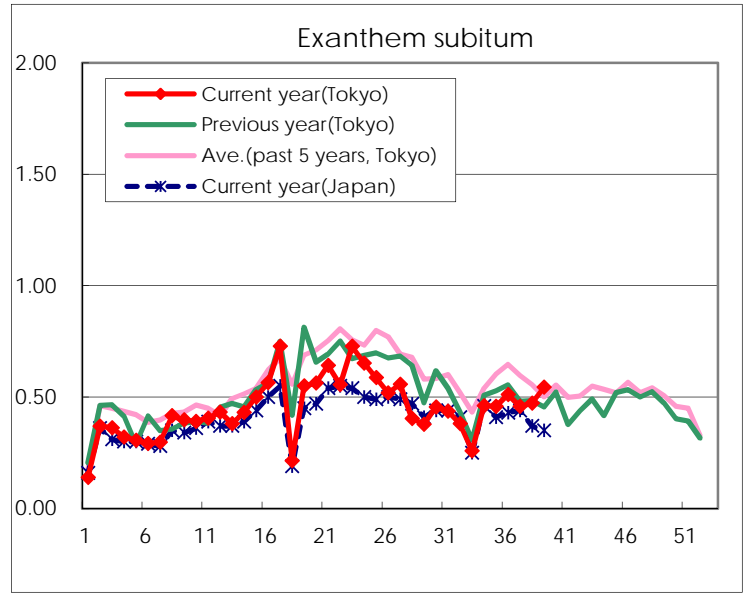
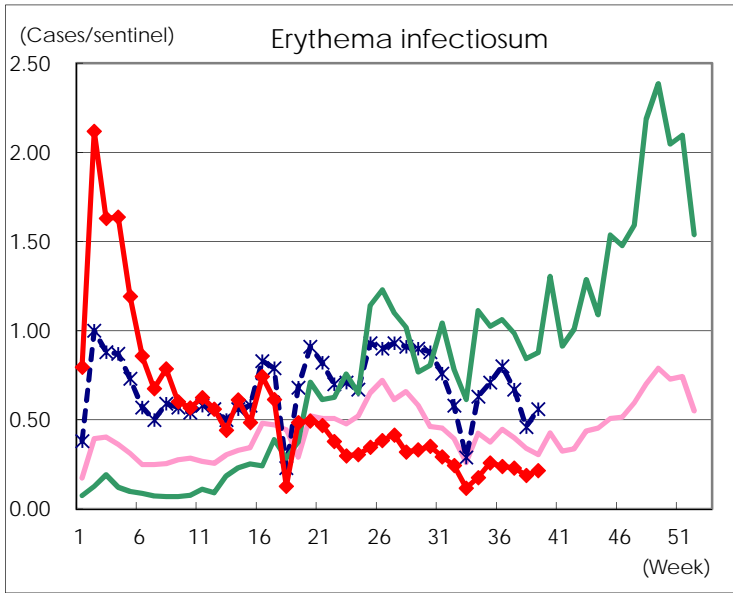
Number of patients with the diseases to be reported
by the designated clinics and hospitals

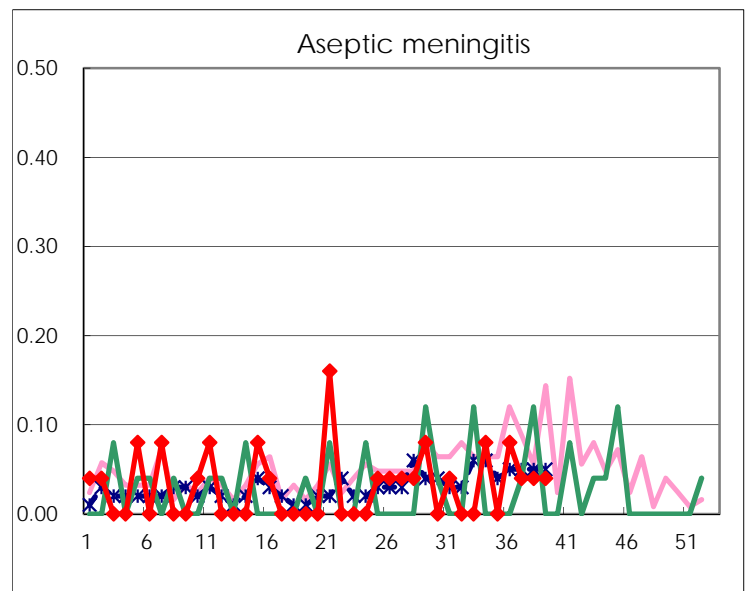
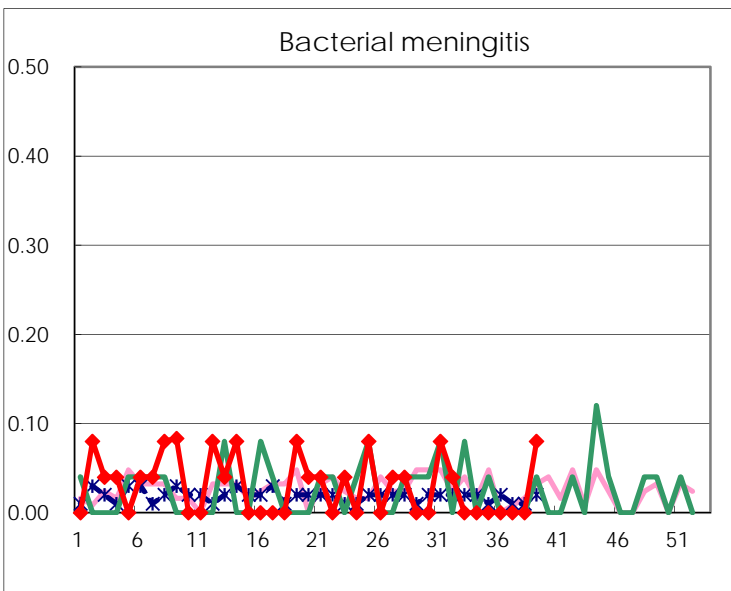
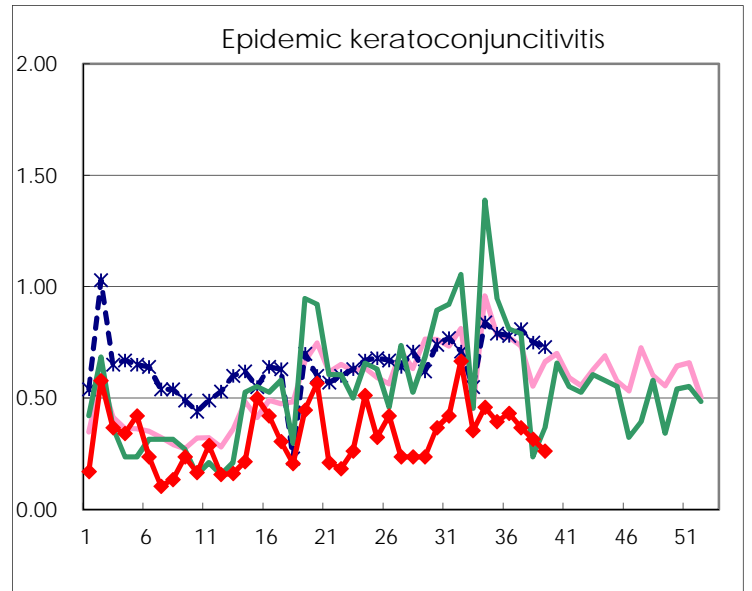
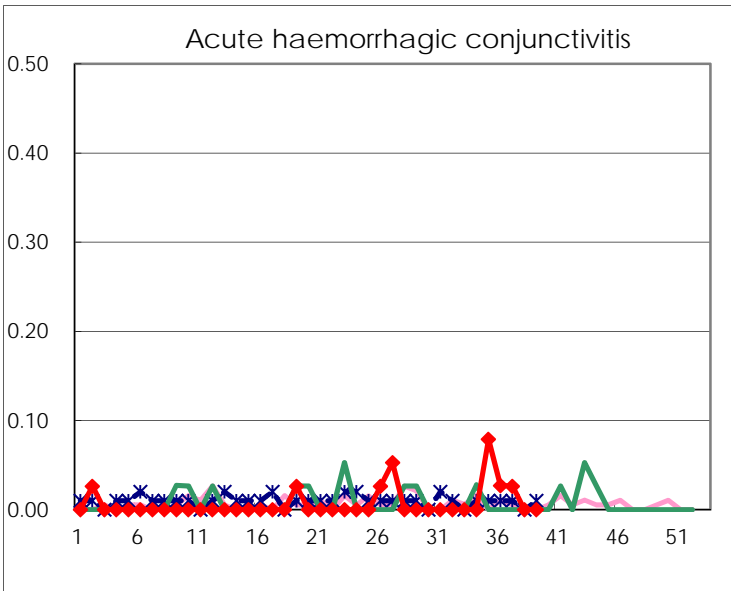
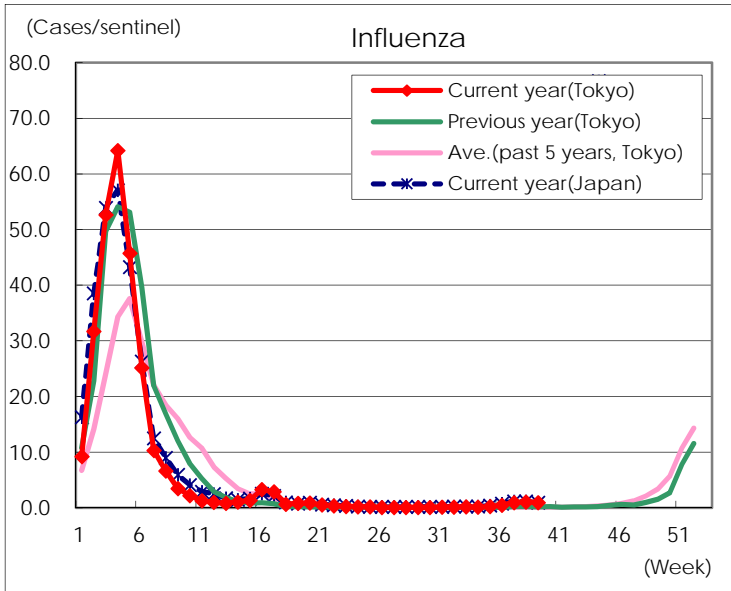
Diseases	Tokyo				
	36th	37th	38th	39th	/sentinel
Respiratory syncytial virus infection	684	661	465	390	1.51
Pharyngoconjunctival fever	91	98	79	71	0.27
Group A streptococcal pharyngitis	369	353	364	390	1.51
Infectious gastroenteritis	1,007	905	749	787	3.04
Chickenpox	39	45	67	71	0.27
Hand, foot, and mouth disease	682	696	655	682	2.63
Erythema infectiosum	62	60	49	56	0.22
Exanthem subitum	133	119	123	141	0.54
Herpangina	505	440	298	248	0.96
Mumps	18	17	22	20	0.08
Kawasaki disease	2	2	5	6	0.02
Cold with exanthems	27	23	14	13	0.05
Influenza	202	387	436	398	0.96
Acute hemorrhagic conjunctivitis	1	1			
Epidemic keratoconjunctivitis	16	14	12	10	0.26
Bacterial meningitis				2	0.08
Aseptic meningitis	2	1	1	1	0.04
<i>Mycoplasma pneumoniae</i>	12	12	10	11	0.44
Chlamydial pneumonia (excluding psittacosis)	1	1	3	1	0.04
Infectious gastroenteritis (only by Rotavirus)	1				
Influenza-Associated Hospitalizations		3	4	3	0.12

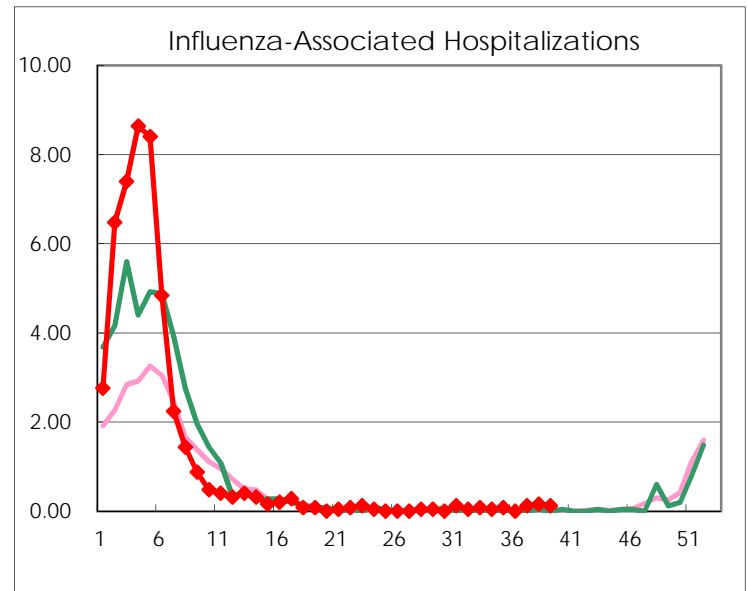
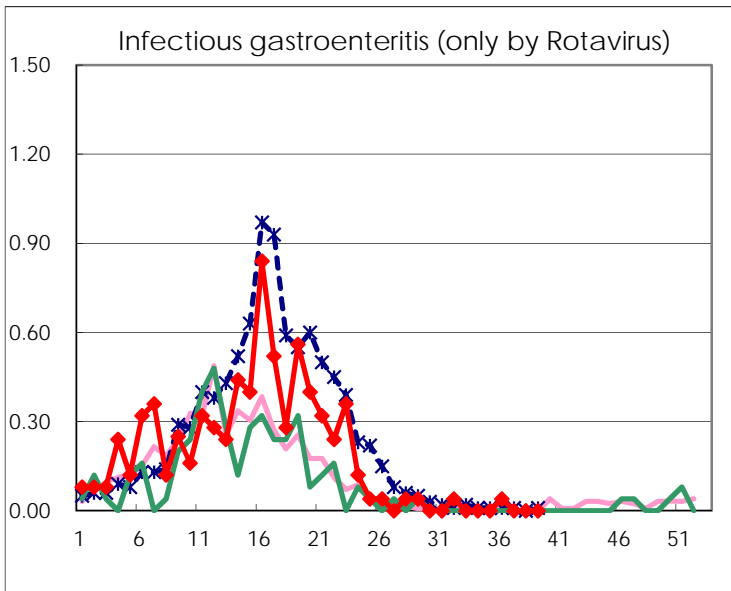
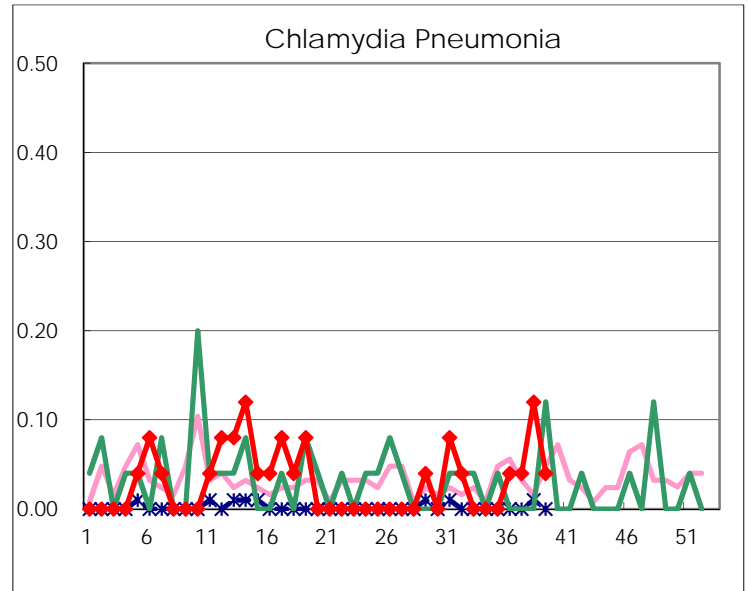
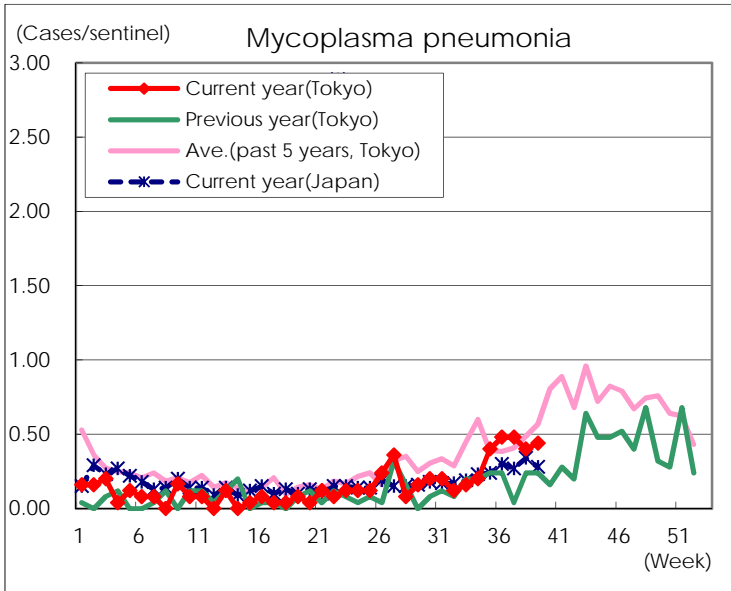
(Blank means 0.)

Disease Trend Graph (weekly reported cases per sentinel in comparison)









Number of sentinel facilities for weekly reporting		
Types of sentinels	Number of sentinels	Sentinels having reported
Pediatric	264	259
Influenza	419	413
Ophthalmic	39	38
Specially-designated	25	25