

10 October 2019 / Number 40

Surveillance System in Tokyo, Japan

The infectious diseases which all physicians must report

All physicians must report to health centers the incidence of the diseases which are shown at page one. Health centers electronically report the individual cases to Tokyo Metropolitan Infectious Disease Surveillance Center.

The infectious diseases required to be reported by the sentinels

The numbers of patients who visit the sentinel clinics or hospitals during a week are reported to health centers in Tokyo. And they electronically report the numbers to Tokyo Metropolitan Infectious Disease Surveillance Center. We have about 500 sentinel clinics and hospitals in Tokyo.

Tokyo Metropolitan Institute of Public Health

TEL:81-3-3363-3213 FAX:81-3-5332-7365

e-mail:www@tokyo-eiken.go.jp

URL:idsc.tokyo-eiken.go.jp/

Number of patients with the diseases which all physicians must report

Category	Diseases	Tokyo					Japan	
		37th	38th	39th	40th	Cum 2019	40th	Cum 2019
I	Ebola hemorrhagic fever							
	Crimean-Congo hemorrhagic fever							
	Smallpox							
	South American hemorrhagic fever							
	Plague							
	Marburg disease							
	Lassa fever							
II	Acute poliomyelitis							
	Tuberculosis	71	63	40	50	2,422	306	16,375
	Diphtheria							
	Severe Acute Respiratory Syndrome(SARS)							
	Middle East Respiratory Syndrome (MERS)							
	Avian influenza H5N1							
III	Avian influenza H7N9							
	Cholera					2		4
	Shigellosis	1				15	1	75
	Enterohemorrhagic Escherichia coli infection	17	17	25	14	322	100	3,018
	Typhoid fever					3	1	33
IV	Paratyphoid fever					3		13
	Hepatitis E	2	3	3	2	103	9	394
	West Nile fever							
	Hepatitis A	1	2	4	1	122	4	362
	Echinococcosis							16
	Yellow fever							
	Psittacosis					3		13
	Omsk hemorrhagic fever							
	Relapsing fever							4
	Kyasanur forest disease							
	Q fever							
	Rabies							
	Coccidioidomycosis							2
	Monkeypox							
	Zika virus infection							1
	Severe Fever with Thrombocytopenia Syndrome					1		81
	Hemorrhagic fever with renal syndrome							
	Western equine encephalitis							
	Tick-borne encephalitis							
	Anthrax							
	Chikungunya fever			3		6	1	38
	Scrub typhus(Tsutsugamushi disease)				1	1	2	86
	Dengue fever	2	3	3	8	100	19	371
	Eastern equine encephalitis							
	Avian influenza (excluding H5N1 and H7N9)							
	Nipah virus infection							
	Japanese spotted fever						18	208
	Japanese encephalitis						1	3
	Hantavirus pulmonary syndrome							
	Herpes B virus infection							
	Glanders							
	Brucellosis					1		2
	Venezuelan equine encephalitis							
	Hendra virus infection							
Epidemic typhus								
Botulism							1	
Malaria	1			2	16	2	46	
Tularemia								
Lyme disease						2	13	
Lyssavirus infection(excluding rabies)								
Rift valley fever								
Melioidosis							2	
Legionellosis	5	4	7	5	151	47	1,836	
Leptospirosis	3				6	1	17	
Rocky mountain spotted fever								

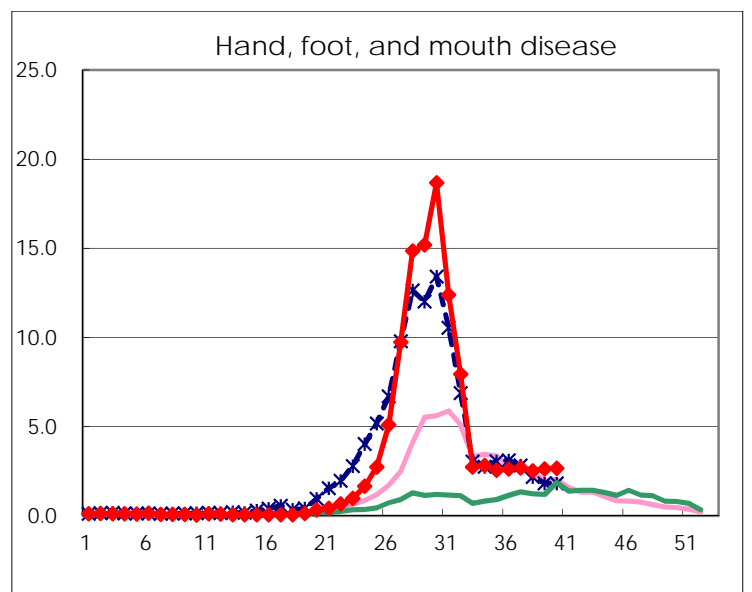
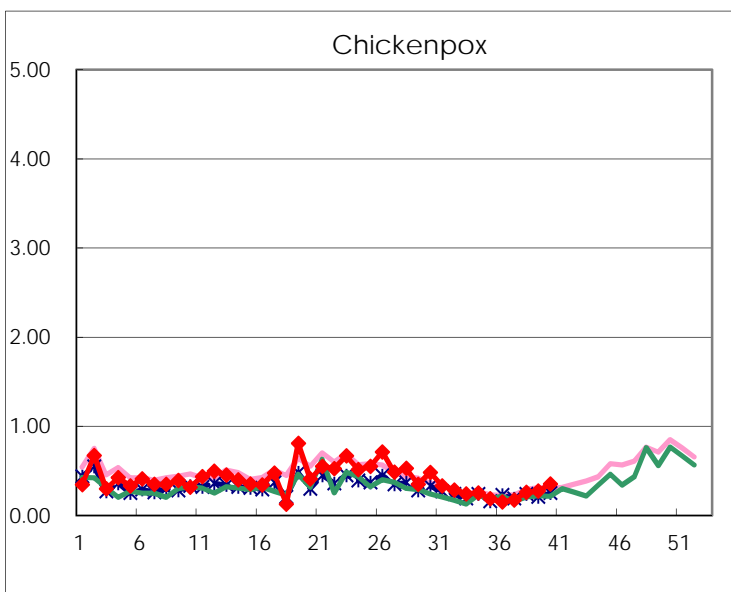
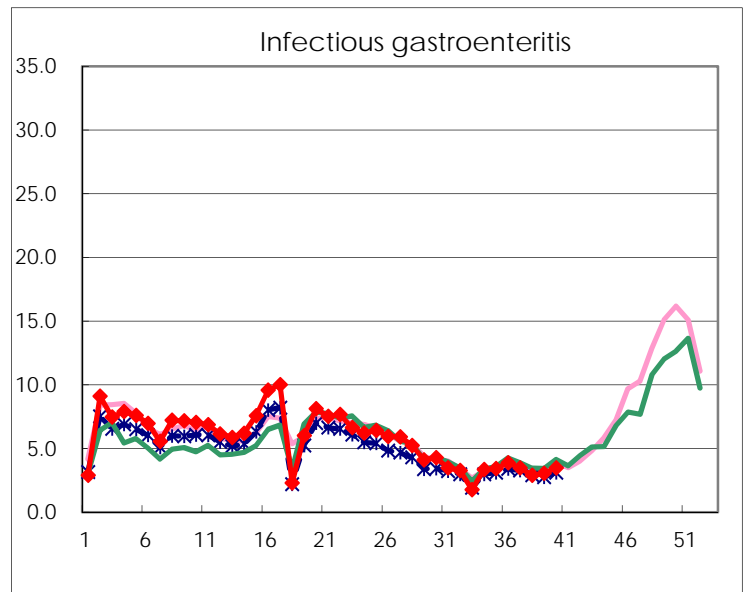
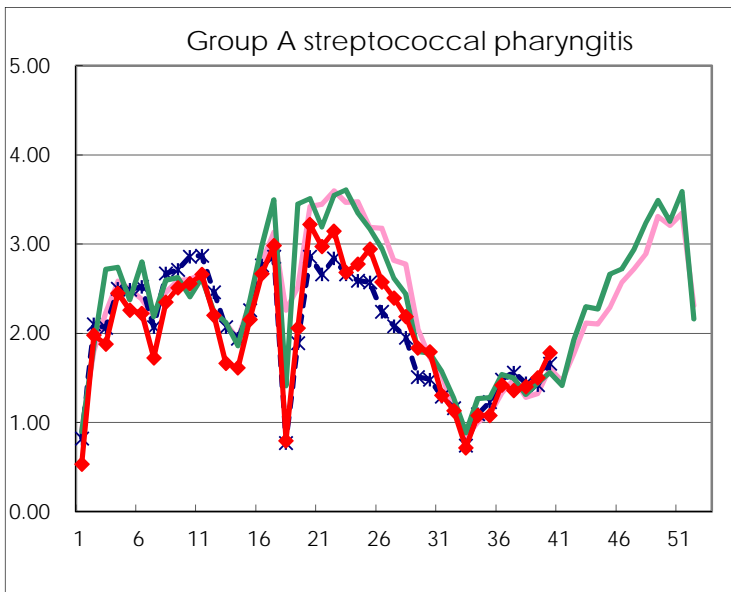
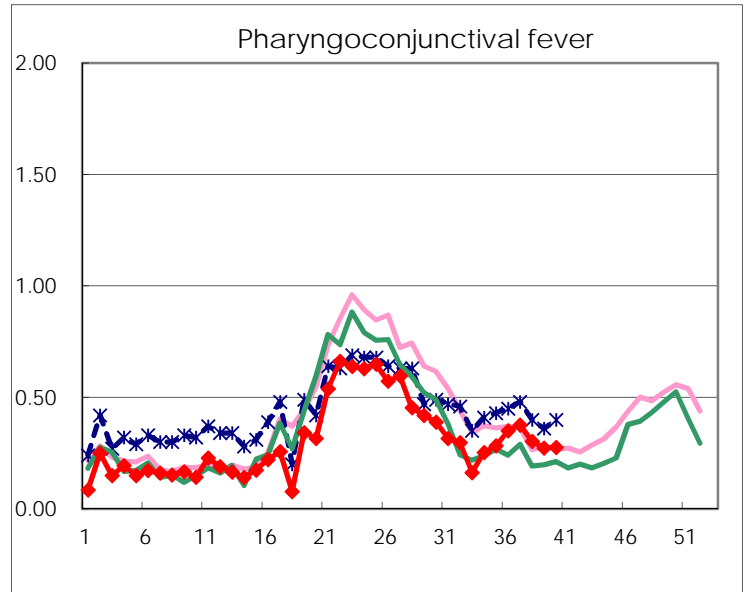
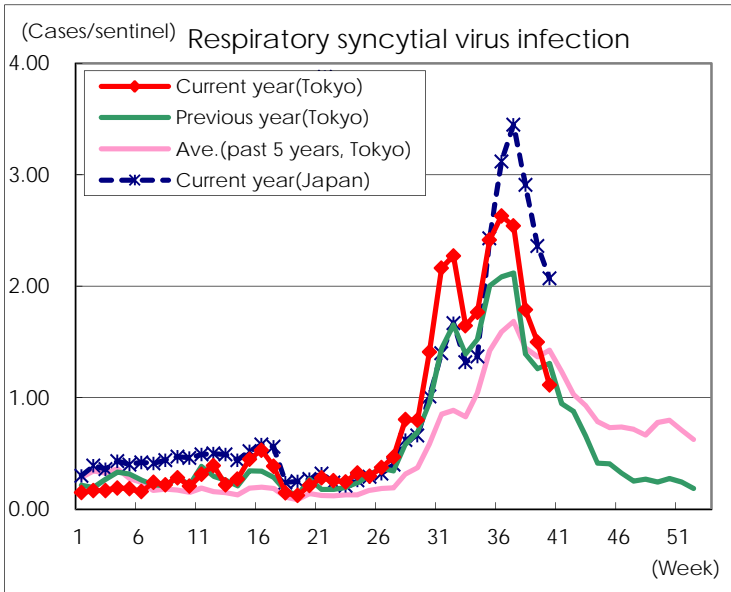
Category	Diseases	Tokyo					Japan	
		37th	38th	39th	40th	Cum 2019	40th	Cum 2019
V	Amebiasis	4	1	4	2	128	10	674
	Viral hepatitis(excluding hepatitis A and E)	2	2	1	1	76	5	262
	CRE infection	10	5	3	8	162	40	1,674
	Acute Flaccid Paralysis (excluding Acute poliomyelitis)	1				4		60
	Acute encephalitis(excluding JE and WNE)	1	1	2		63	5	679
	Cryptosporidiosis					4	1	18
	Creutzfeldt-Jakob disease		1			14	2	145
	Severe invasive streptococcal infections(TSLs)		1	3	3	97	13	705
	Acquired immunodeficiency syndrome (AIDS)	4	7	11	6	298	10	904
	Giardiasis					5		34
	Invasive <i>Haemophilus influenzae</i> disease	1	1		2	67	4	436
	Invasive meningococcal disease	1		1		4	2	39
	Invasive pneumococcal disease	2	3	5	1	285	14	2,455
	Varicella (limited to hospitalized case)	3	3			55	5	366
	Congenital rubella syndrome					1		3
	Syphilis	43	24	28	39	1,333	86	5,111
	Disseminated cryptococcosis					9	2	111
	Tetanus		1			6	1	99
	Vancomycin-resistant <i>S. aureus</i> infection							
	Vancomycin-resistant <i>Enterococcus</i> infection	1				6		56
	Pertussis	22	21	19	22	1,104	289	13,377
	Rubella	5	1	4	3	840	9	2,222
Measles		2	5	6	118	11	719	
MDRA infection					2		24	

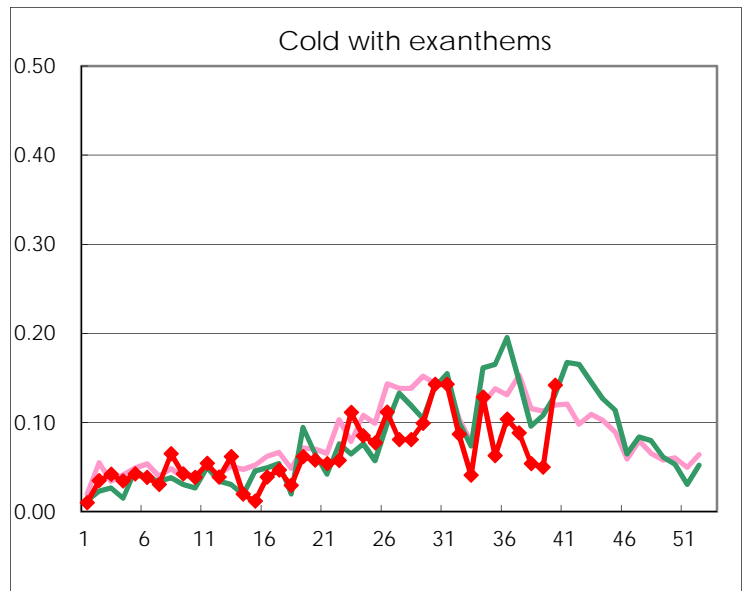
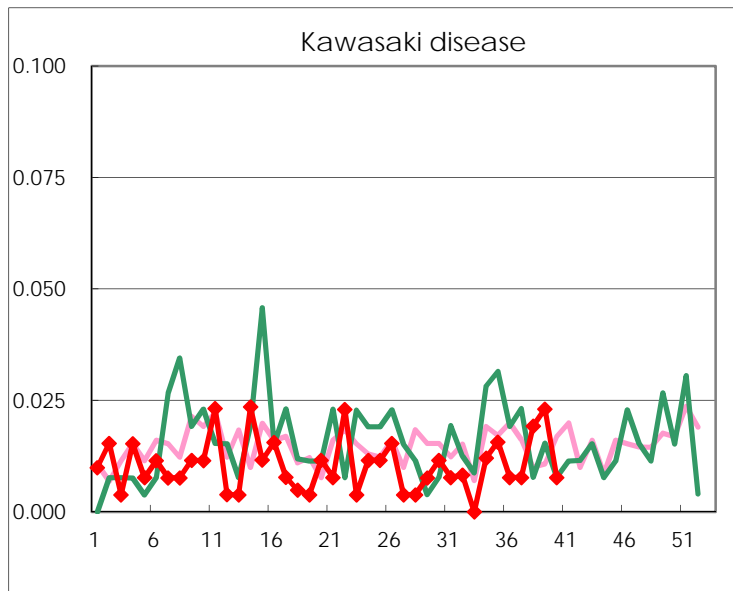
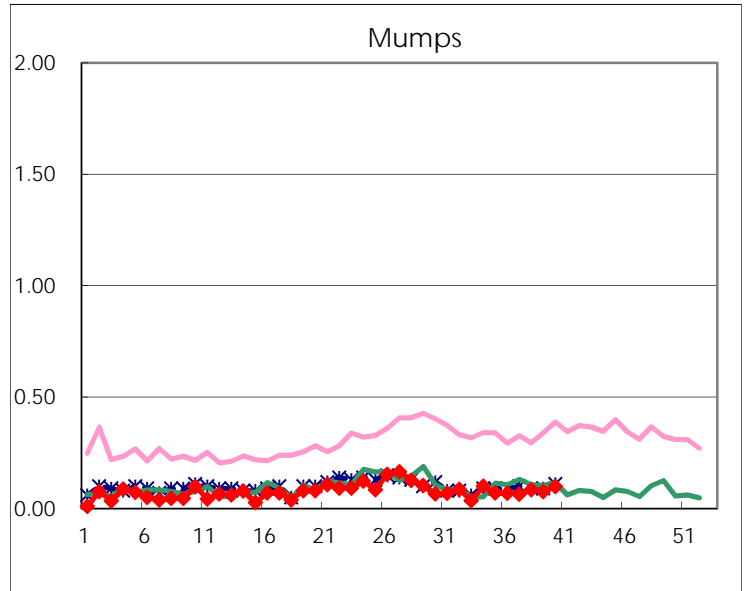
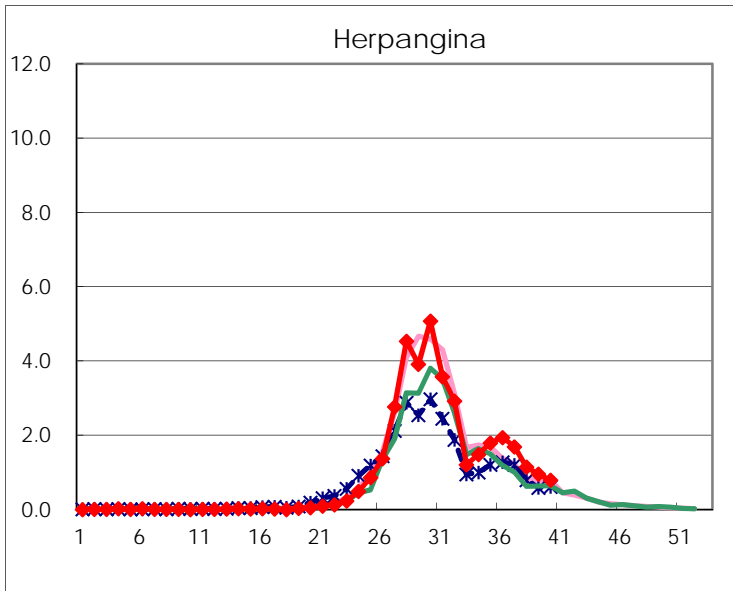
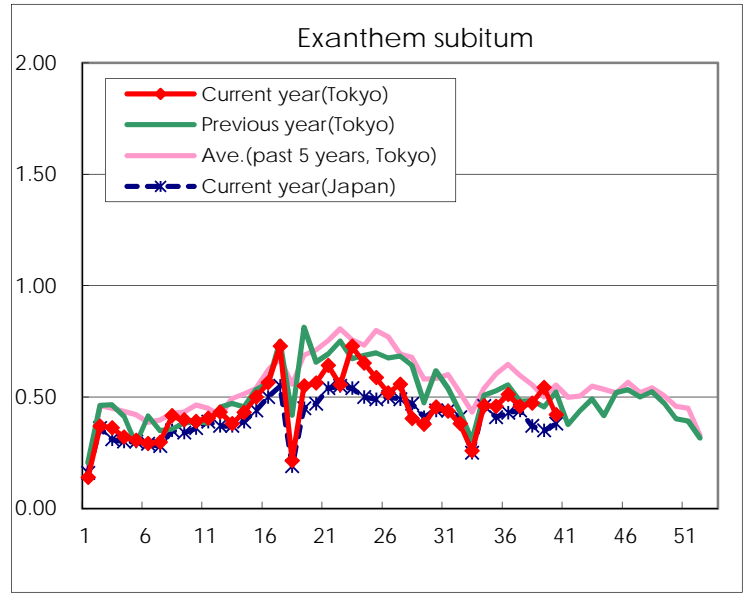
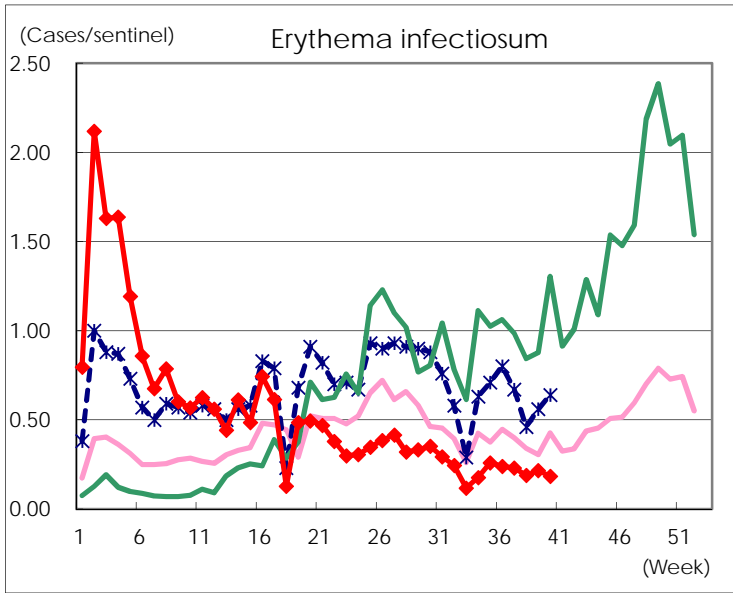
Number of patients with the diseases to be reported
by the designated clinics and hospitals

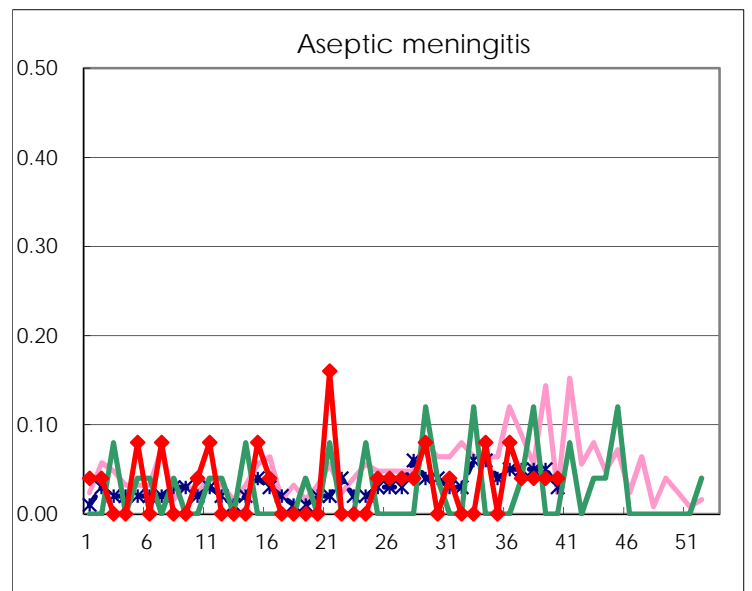
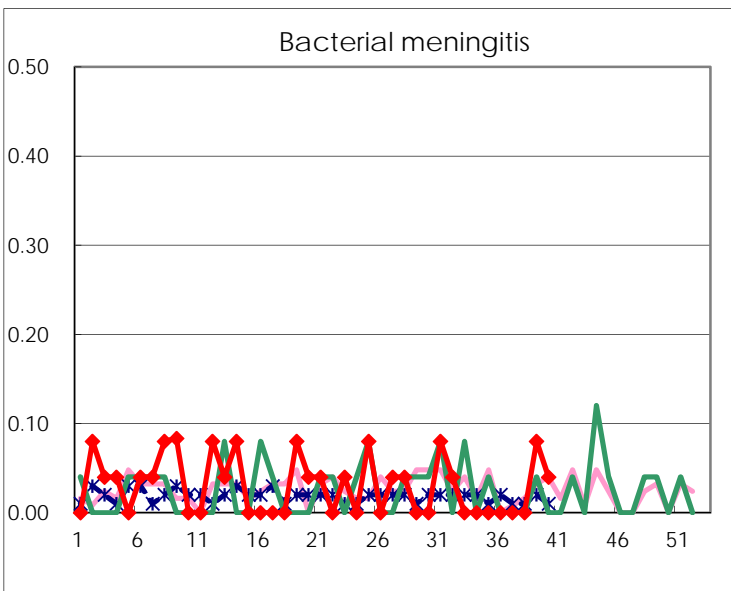
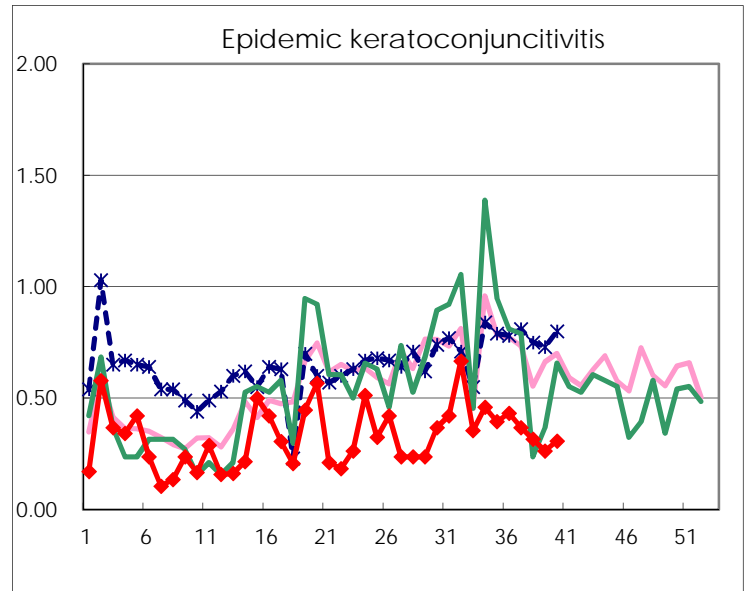
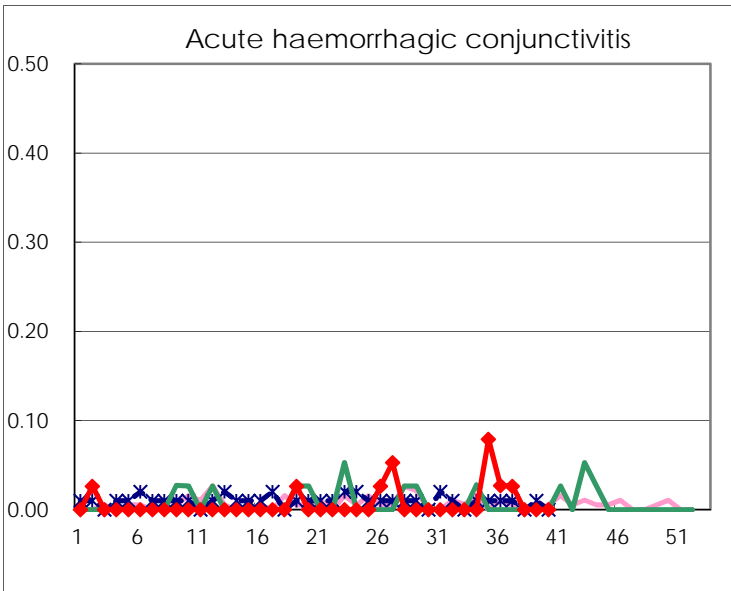
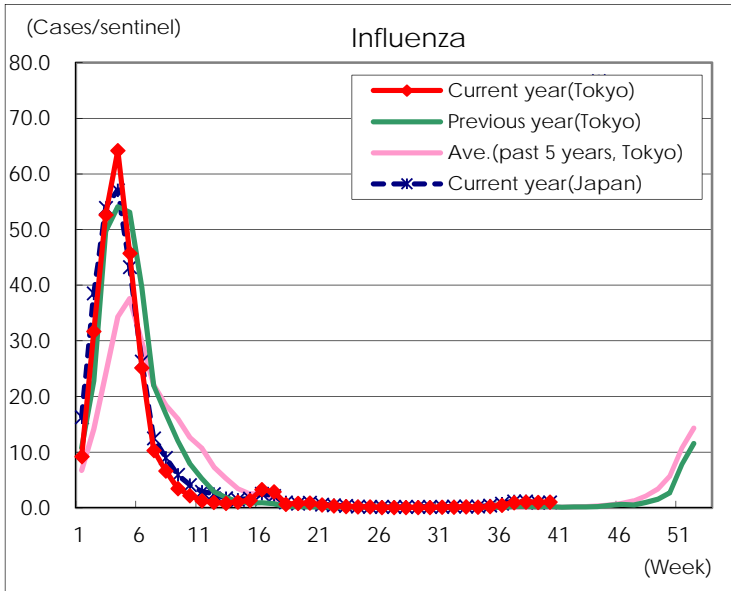
Diseases	Tokyo				
	37th	38th	39th	40th	/sentinel
Respiratory syncytial virus infection	661	465	390	291	1.11
Pharyngoconjunctival fever	98	79	71	72	0.28
Group A streptococcal pharyngitis	353	364	390	465	1.78
Infectious gastroenteritis	905	749	788	908	3.48
Chickenpox	45	67	71	92	0.35
Hand, foot, and mouth disease	696	655	682	695	2.66
Erythema infectiosum	60	49	56	48	0.18
Exanthem subitum	119	123	141	110	0.42
Herpangina	440	298	248	206	0.79
Mumps	17	22	20	26	0.10
Kawasaki disease	2	5	6	2	0.01
Cold with exanthems	23	14	13	37	0.14
Influenza	387	437	402	435	1.05
Acute hemorrhagic conjunctivitis	1				
Epidemic keratoconjunctivitis	14	12	10	12	0.31
Bacterial meningitis			2	1	0.04
Aseptic meningitis	1	1	1	1	0.04
<i>Mycoplasma pneumoniae</i>	12	10	11	12	0.48
Chlamydial pneumonia (excluding psittacosis)	1	3	1		
Infectious gastroenteritis (only by Rotavirus)					
Influenza-Associated Hospitalizations	3	4	3	4	0.16

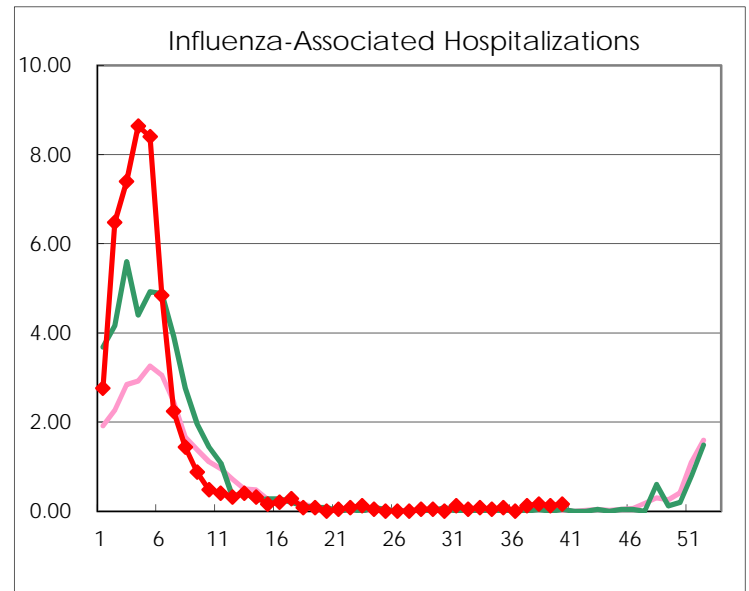
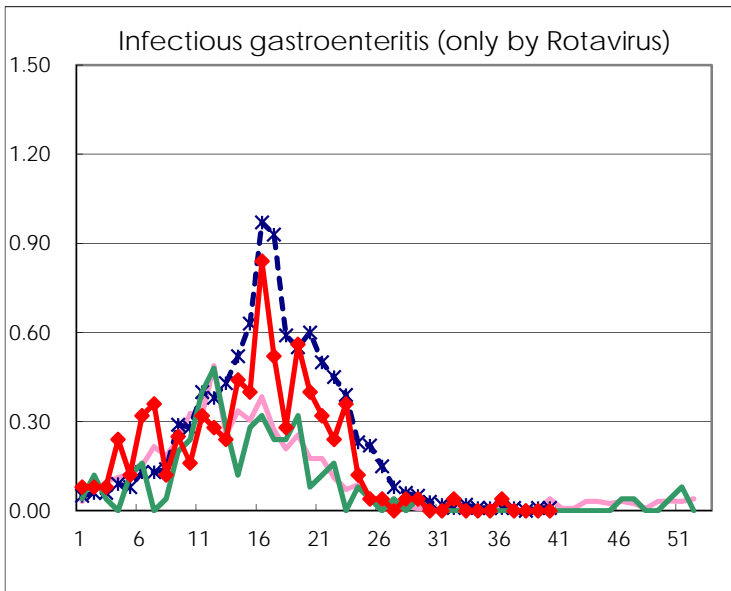
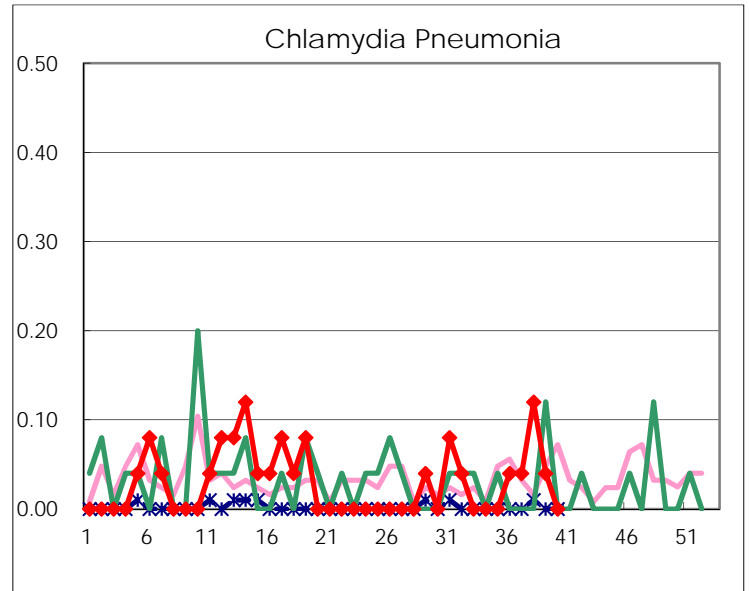
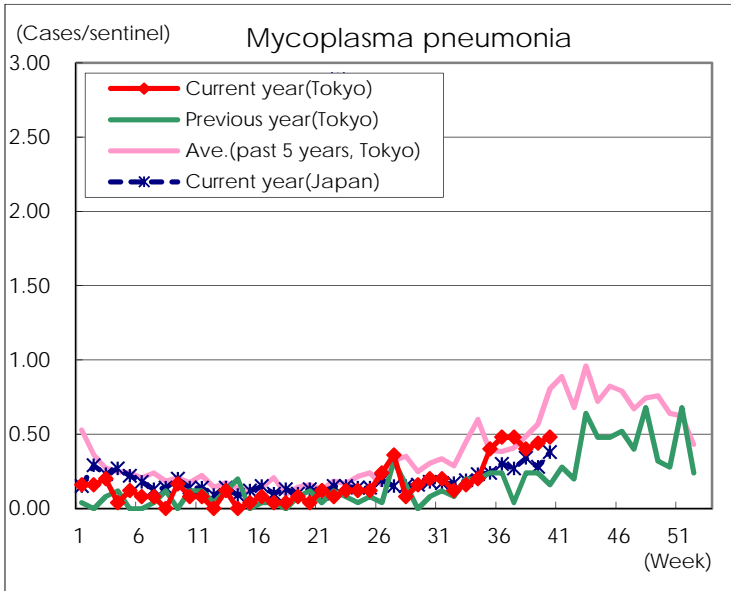
(Blank means 0.)

Disease Trend Graph (weekly reported cases per sentinel in comparison)









Number of sentinel facilities for weekly reporting		
Types of sentinels	Number of sentinels	Sentinels having reported
Pediatric	264	261
Influenza	419	413
Ophthalmic	39	39
Specially-designated	25	25