

17 October 2019 / Number 41

Surveillance System in Tokyo, Japan

The infectious diseases which all physicians must report

All physicians must report to health centers the incidence of the diseases which are shown at page one. Health centers electronically report the individual cases to Tokyo Metropolitan Infectious Disease Surveillance Center.

The infectious diseases required to be reported by the sentinels

The numbers of patients who visit the sentinel clinics or hospitals during a week are reported to health centers in Tokyo. And they electronically report the numbers to Tokyo Metropolitan Infectious Disease Surveillance Center. We have about 500 sentinel clinics and hospitals in Tokyo.

Tokyo Metropolitan Institute of Public Health

TEL:81-3-3363-3213 FAX:81-3-5332-7365

e-mail:www@tokyo-eiken.go.jp

URL:idsc.tokyo-eiken.go.jp/

Number of patients with the diseases which all physicians must report

Category	Diseases	Tokyo					Japan	
		38th	39th	40th	41st	Cum 2019	41st	Cum 2019
I	Ebola hemorrhagic fever							
	Crimean-Congo hemorrhagic fever							
	Smallpox							
	South American hemorrhagic fever							
	Plague							
	Marburg disease							
	Lassa fever							
II	Acute poliomyelitis							
	Tuberculosis	63	44	55	49	2,480	311	16,827
	Diphtheria							
	Severe Acute Respiratory Syndrome(SARS)							
	Middle East Respiratory Syndrome (MERS)							
	Avian influenza H5N1							
	Avian influenza H7N9							
III	Cholera					2		4
	Shigellosis				1	16	4	79
	Enterohemorrhagic Escherichia coli infection	17	25	15	7	330	77	3,113
	Typhoid fever					3		33
	Paratyphoid fever					3	1	14
IV	Hepatitis E	3	3	2	1	104	4	398
	West Nile fever							
	Hepatitis A	2	4	1	3	125	5	368
	Echinococcosis							16
	Yellow fever							
	Psittacosis					3		13
	Omsk hemorrhagic fever							
	Relapsing fever						1	5
	Kyasanur forest disease							
	Q fever							
	Rabies							
	Coccidioidomycosis							2
	Monkeypox							
	Zika virus infection							1
	Severe Fever with Thrombocytopenia Syndrome					1	7	88
	Hemorrhagic fever with renal syndrome							
	Western equine encephalitis							
	Tick-borne encephalitis							
	Anthrax							
	Chikungunya fever		3		1	7	2	40
	Scrub typhus(Tsutsugamushi disease)			1		1	2	88
	Dengue fever	3	3	8	8	108	13	386
	Eastern equine encephalitis							
	Avian influenza (excluding H5N1 and H7N9)							
	Nipah virus infection							
	Japanese spotted fever						14	224
	Japanese encephalitis							3
	Hantavirus pulmonary syndrome							
	Herpes B virus infection							
	Glanders							
	Brucellosis					1		2
	Venezuelan equine encephalitis							
	Hendra virus infection							
	Epidemic typhus							
Botulism							1	
Malaria			2		16		46	
Tularemia								
Lyme disease							13	
Lyssavirus infection(excluding rabies)								
Rift valley fever								
Melioidosis							2	
Legionellosis	4	7	5	2	153	33	1,871	
Leptospirosis					6	2	19	
Rocky mountain spotted fever								

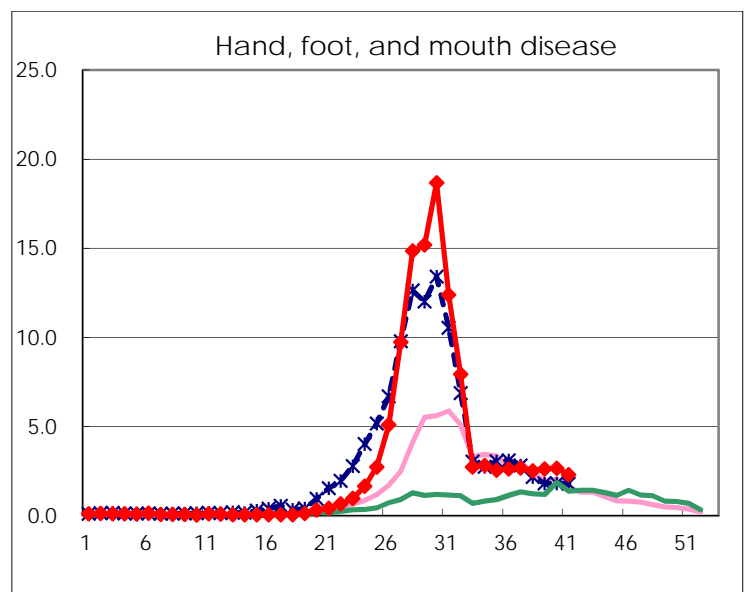
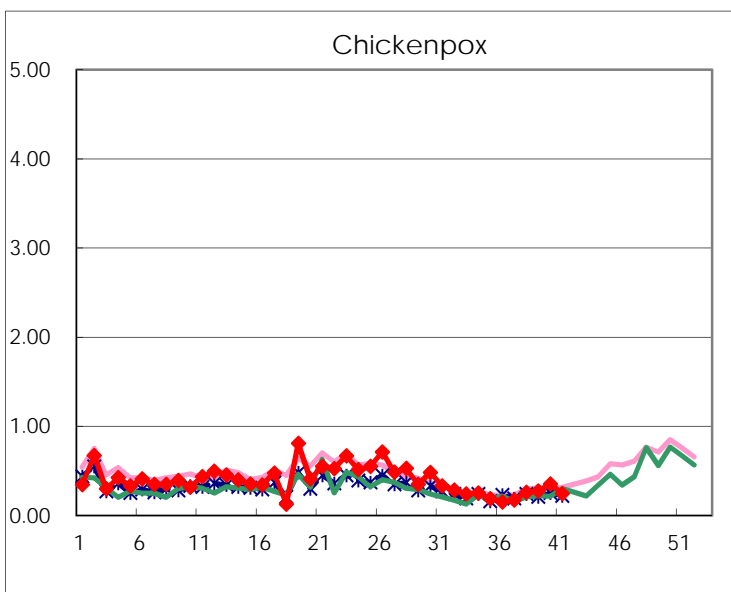
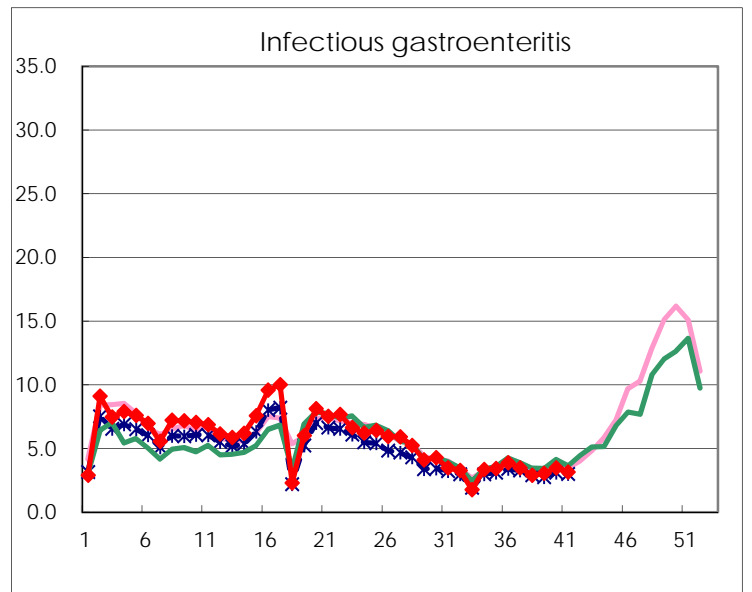
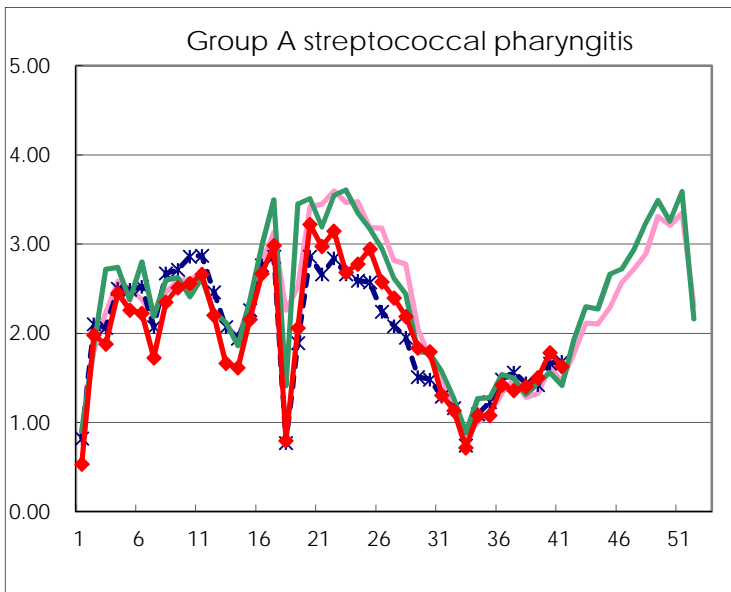
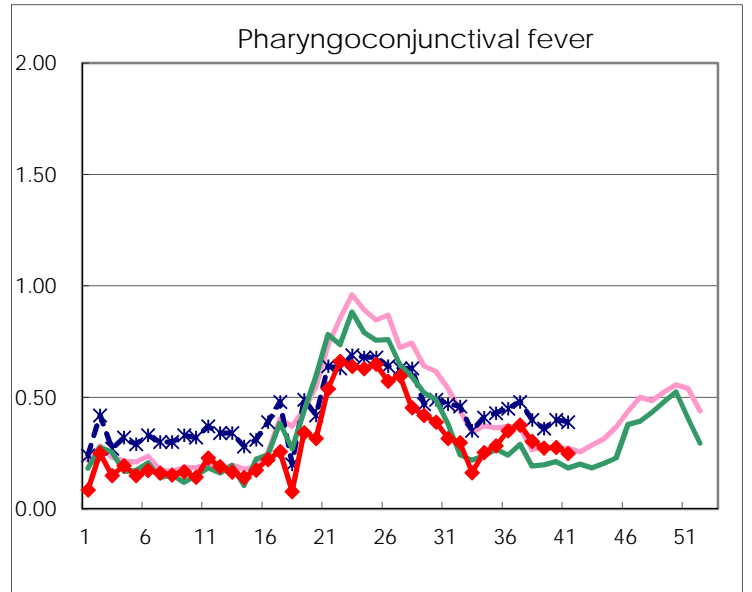
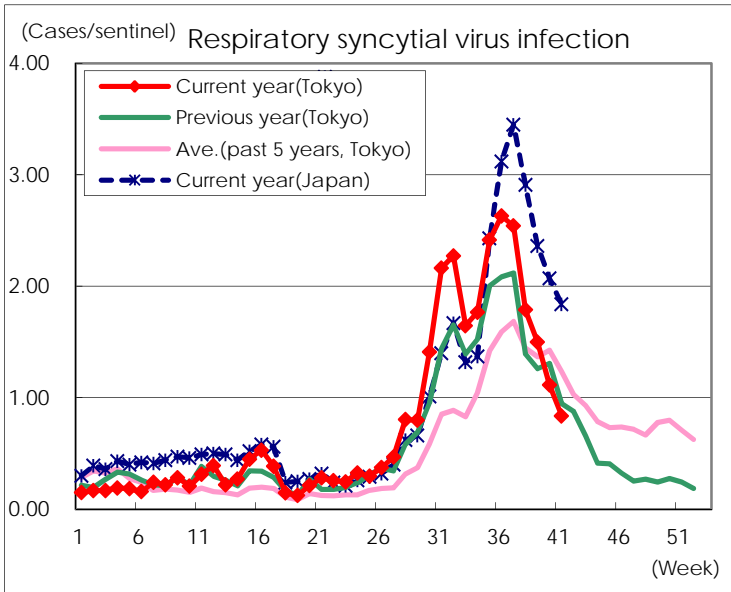
Category	Diseases	Tokyo					Japan	
		38th	39th	40th	41st	Cum 2019	41st	Cum 2019
V	Amebiasis	1	4	2	3	131	11	691
	Viral hepatitis(excluding hepatitis A and E)	2	1	1		76	2	267
	CRE infection	5	3	8	6	168	35	1,727
	Acute Flaccid Paralysis (excluding Acute poliomyelitis)					4		60
	Acute encephalitis(excluding JE and WNE)	1	2		2	65	6	687
	Cryptosporidiosis					4		18
	Creutzfeldt-Jakob disease	1				14	3	149
	Severe invasive streptococcal infections(TSLs)	1	3	3	2	99	12	716
	Acquired immunodeficiency syndrome (AIDS)	7	11	6	7	305	7	922
	Giardiasis					5		34
	Invasive <i>Haemophilus influenzae</i> disease	1		2		67	10	446
	Invasive meningococcal disease		1			4		39
	Invasive pneumococcal disease	3	5	1	7	292	26	2,491
	Varicella (limited to hospitalized case)	3			2	57	3	372
	Congenital rubella syndrome					1		3
	Syphilis	24	28	41	28	1,363	55	5,221
	Disseminated cryptococcosis				1	10	1	113
	Tetanus	1				6	1	101
	Vancomycin-resistant <i>S. aureus</i> infection							
	Vancomycin-resistant <i>Enterococcus</i> infection					6		60
	Pertussis	21	19	22	25	1,129	246	13,701
Rubella	1	4	3		840	7	2,228	
Measles	2	5	6		118	2	719	
MDRA infection					2		24	

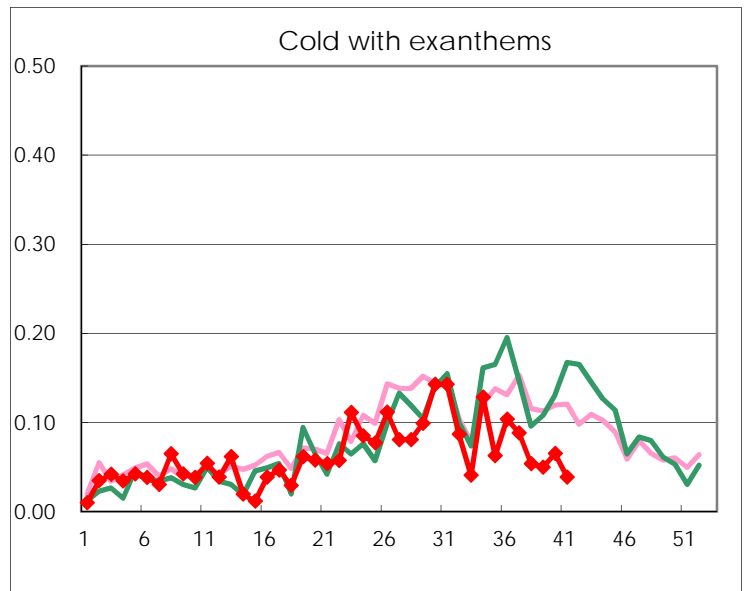
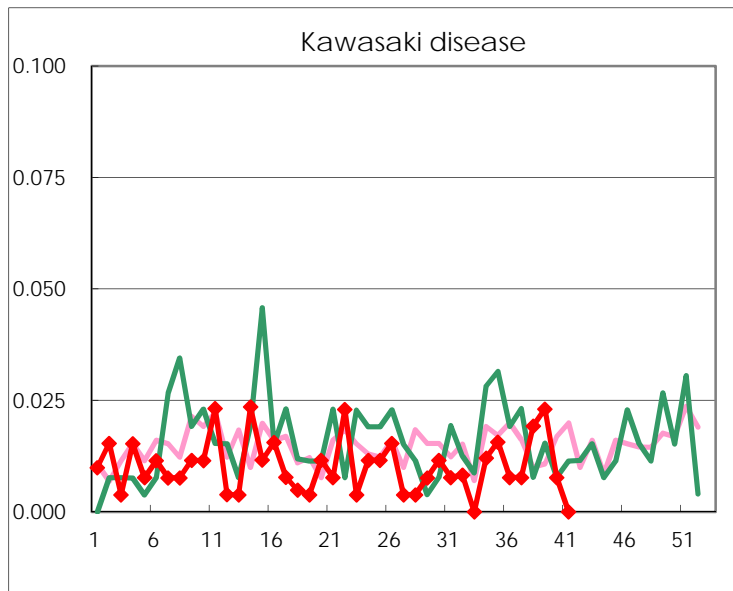
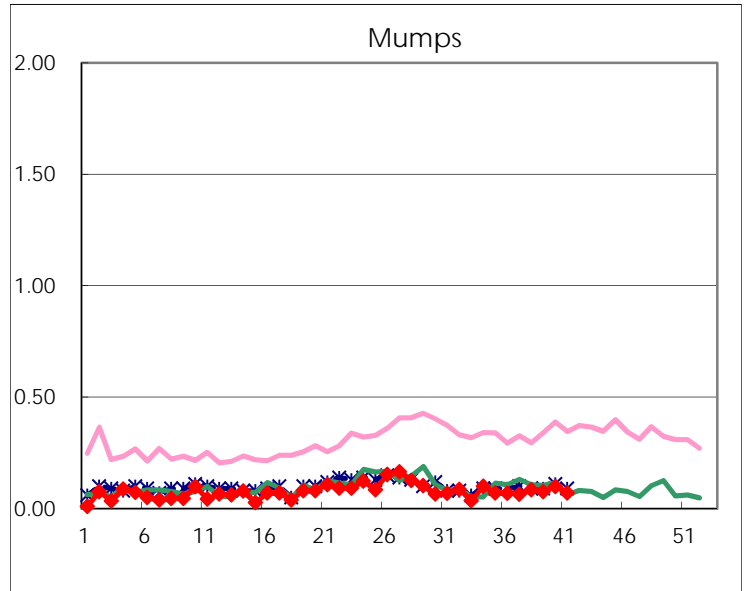
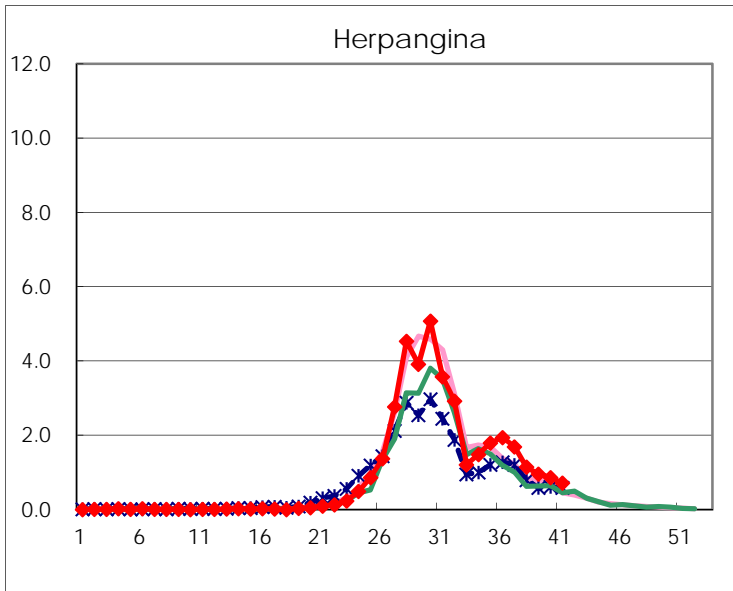
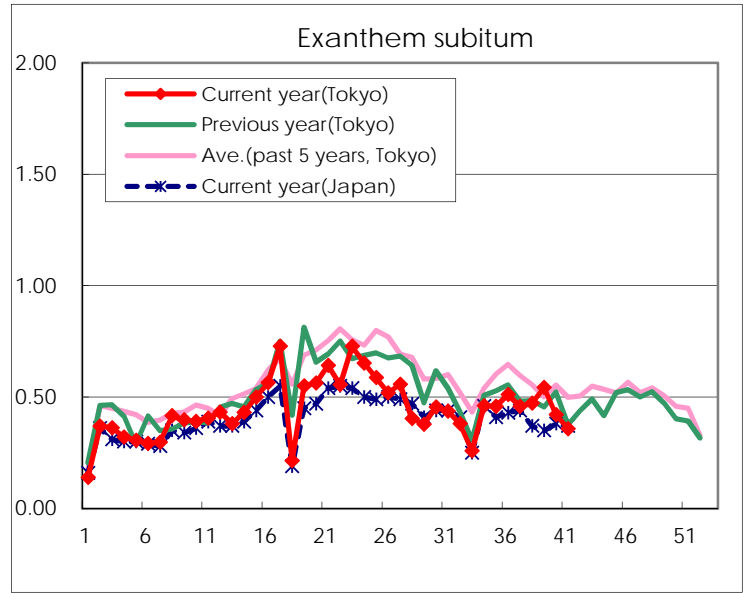
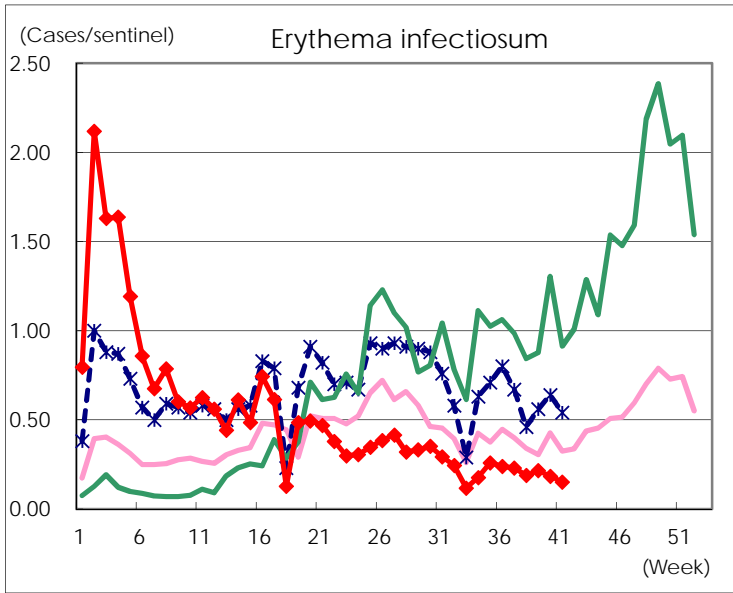
Number of patients with the diseases to be reported
by the designated clinics and hospitals

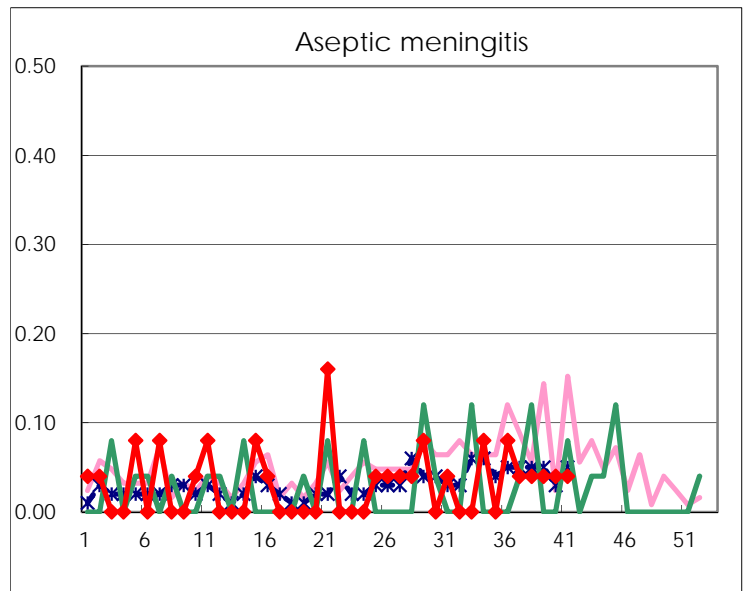
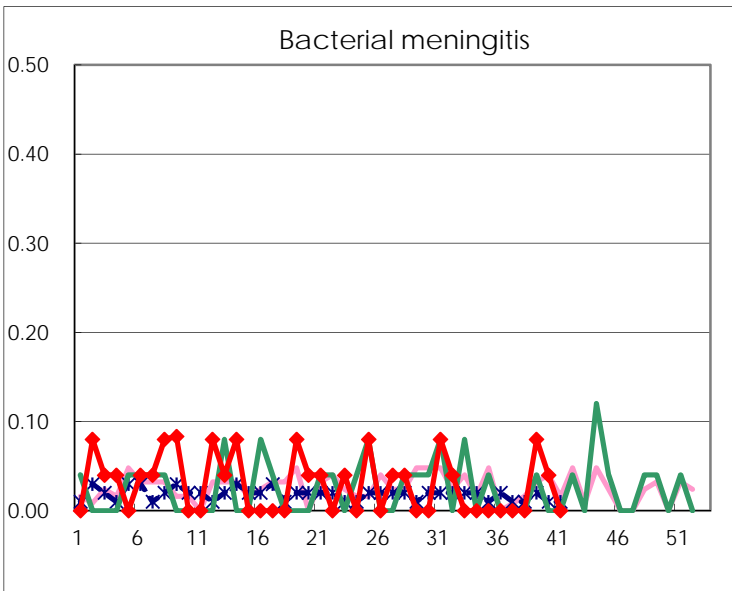
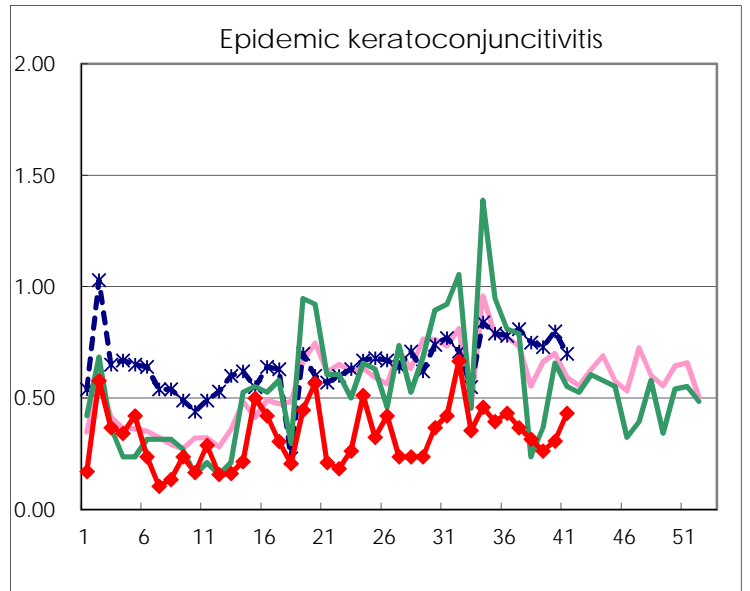
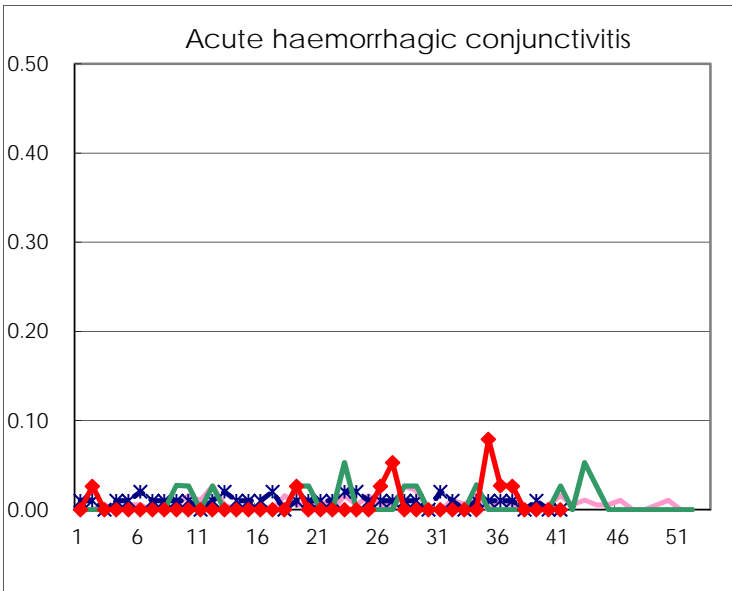
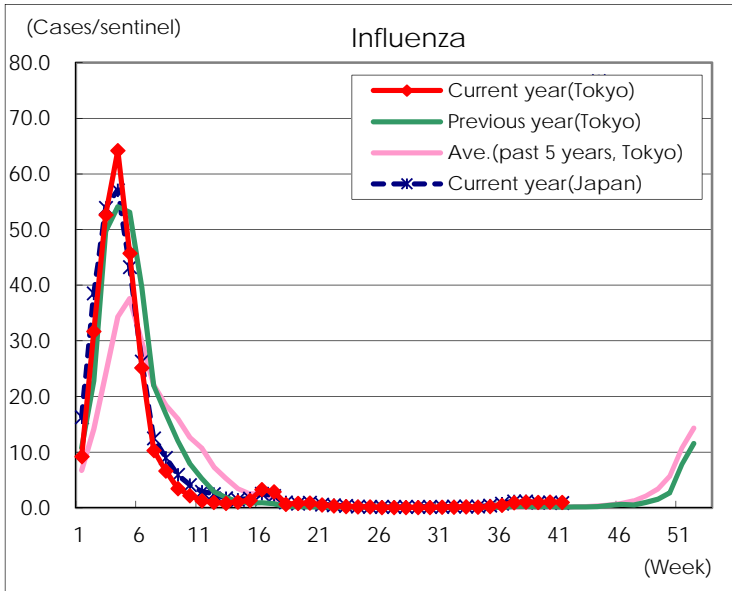
Diseases	Tokyo				
	38th	39th	40th	41st	/sentinel
Respiratory syncytial virus infection	465	390	291	215	0.84
Pharyngoconjunctival fever	79	71	72	64	0.25
Group A streptococcal pharyngitis	364	390	465	418	1.63
Infectious gastroenteritis	749	788	908	809	3.15
Chickenpox	67	71	92	63	0.25
Hand, foot, and mouth disease	655	682	695	593	2.31
Erythema infectiosum	49	56	48	39	0.15
Exanthem subitum	123	141	110	92	0.36
Herpangina	298	248	226	183	0.71
Mumps	22	20	26	18	0.07
Kawasaki disease	5	6	2		
Cold with exanthems	14	13	17	10	0.04
Influenza	437	402	435	409	1.01
Acute hemorrhagic conjunctivitis					
Epidemic keratoconjunctivitis	12	10	12	16	0.43
Bacterial meningitis		2	1		
Aseptic meningitis	1	1	1	1	0.04
<i>Mycoplasma pneumoniae</i>	10	11	12	5	0.20
Chlamydial pneumonia (excluding psittacosis)	3	1			
Infectious gastroenteritis (only by Rotavirus)					
Influenza-Associated Hospitalizations	4	3	4	8	0.32

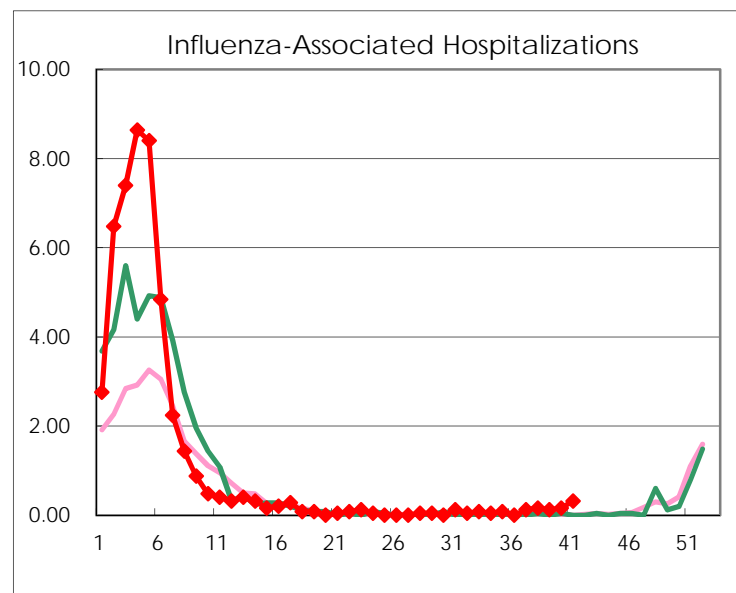
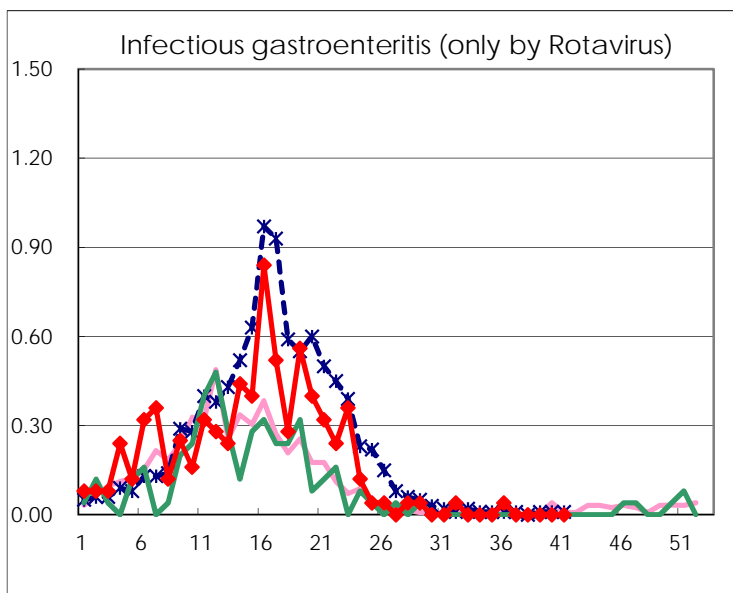
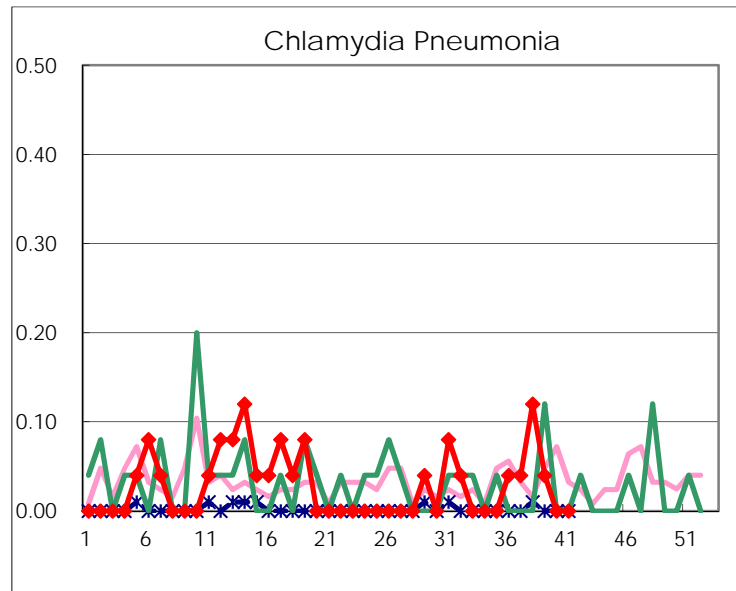
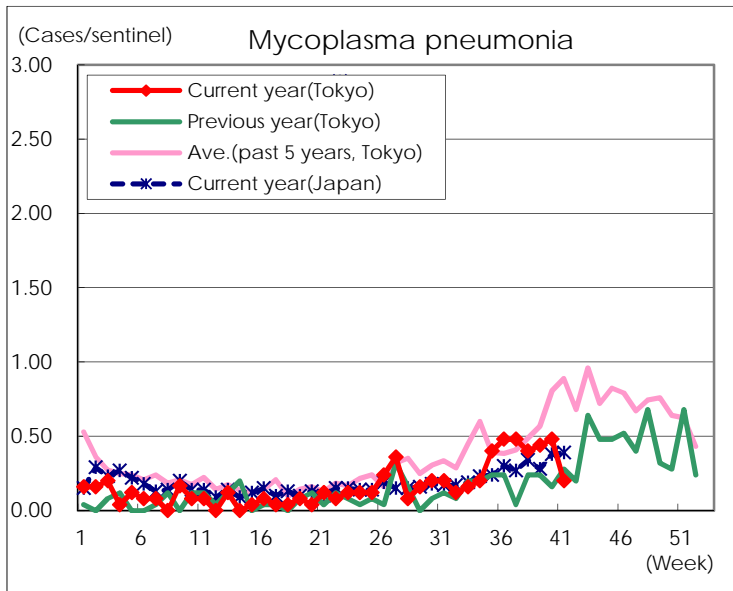
(Blank means 0.)

Disease Trend Graph (weekly reported cases per sentinel in comparison)









Number of sentinel facilities for weekly reporting		
Types of sentinels	Number of sentinels	Sentinels having reported
Pediatric	264	257
Influenza	419	406
Ophthalmic	39	37
Specially-designated	25	25