

24 October 2019 / Number 42

Surveillance System in Tokyo, Japan

The infectious diseases which all physicians must report

All physicians must report to health centers the incidence of the diseases which are shown at page one. Health centers electronically report the individual cases to Tokyo Metropolitan Infectious Disease Surveillance Center.

The infectious diseases required to be reported by the sentinels

The numbers of patients who visit the sentinel clinics or hospitals during a week are reported to health centers in Tokyo. And they electronically report the numbers to Tokyo Metropolitan Infectious Disease Surveillance Center. We have about 500 sentinel clinics and hospitals in Tokyo.

Tokyo Metropolitan Institute of Public Health

TEL:81-3-3363-3213 FAX:81-3-5332-7365

e-mail:www@tokyo-eiken.go.jp

URL:idsc.tokyo-eiken.go.jp/

Number of patients with the diseases which all physicians must report

Category	Diseases	Tokyo					Japan	
		39th	40th	41st	42nd	Cum 2019	42nd	Cum 2019
I	Ebola hemorrhagic fever							
	Crimean-Congo hemorrhagic fever							
	Smallpox							
	South American hemorrhagic fever							
	Plague							
	Marburg disease							
	Lassa fever							
II	Acute poliomyelitis							
	Tuberculosis	44	59	50	48	2,537	252	17,151
	Diphtheria							
	Severe Acute Respiratory Syndrome(SARS)							
	Middle East Respiratory Syndrome (MERS)							
	Avian influenza H5N1							
	Avian influenza H7N9							
III	Cholera					2		4
	Shigellosis			1		16		79
	Enterohemorrhagic Escherichia coli infection	25	15	7	12	342	63	3,184
	Typhoid fever					3		33
	Paratyphoid fever					3		14
IV	Hepatitis E	3	2	1	3	107	5	403
	West Nile fever							
	Hepatitis A	4	1	3		125	3	371
	Echinococcosis							16
	Yellow fever							
	Psittacosis					3		13
	Omsk hemorrhagic fever							
	Relapsing fever							5
	Kyasanur forest disease							
	Q fever							
	Rabies							
	Coccidioidomycosis							2
	Monkeypox							
	Zika virus infection							1
	Severe Fever with Thrombocytopenia Syndrome					1	4	92
	Hemorrhagic fever with renal syndrome							
	Western equine encephalitis							
	Tick-borne encephalitis							
	Anthrax							
	Chikungunya fever	3		1	1	8	2	42
	Scrub typhus(Tsutsugamushi disease)		1			1	1	89
	Dengue fever	3	8	8		108	2	389
	Eastern equine encephalitis							
	Avian influenza (excluding H5N1 and H7N9)							
	Nipah virus infection							
	Japanese spotted fever						19	248
	Japanese encephalitis						1	4
	Hantavirus pulmonary syndrome							
	Herpes B virus infection							
	Glanders							
	Brucellosis					1		2
	Venezuelan equine encephalitis							
	Hendra virus infection							
Epidemic typhus								
Botulism							1	
Malaria		2			16		46	
Tularemia								
Lyme disease							13	
Lyssavirus infection(excluding rabies)								
Rift valley fever								
Melioidosis							2	
Legionellosis	7	5	2	1	154	35	1,910	
Leptospirosis				2	8	1	20	
Rocky mountain spotted fever								

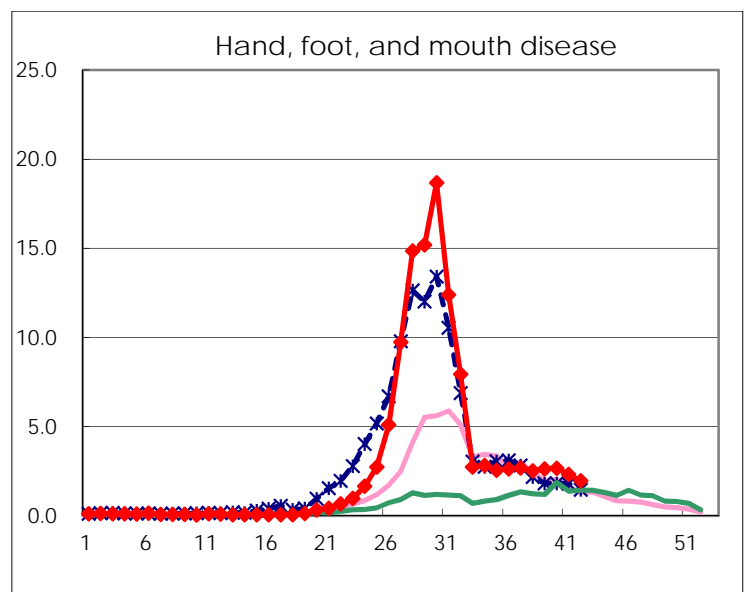
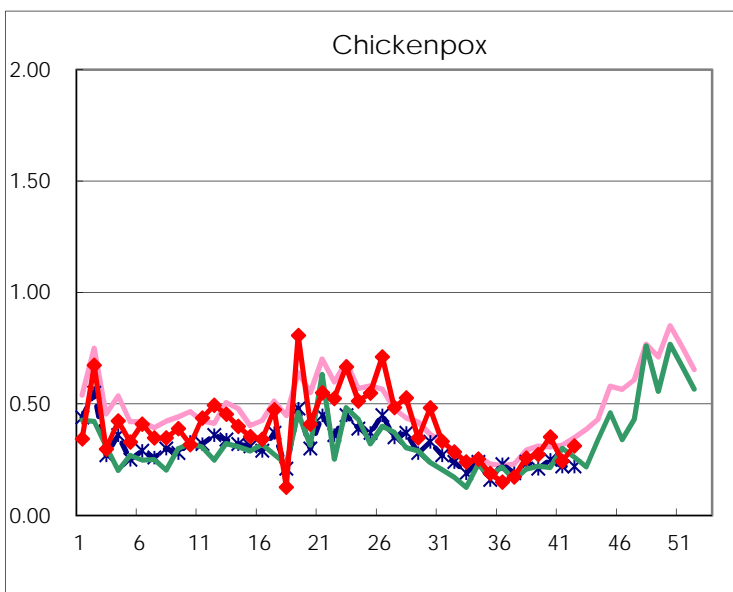
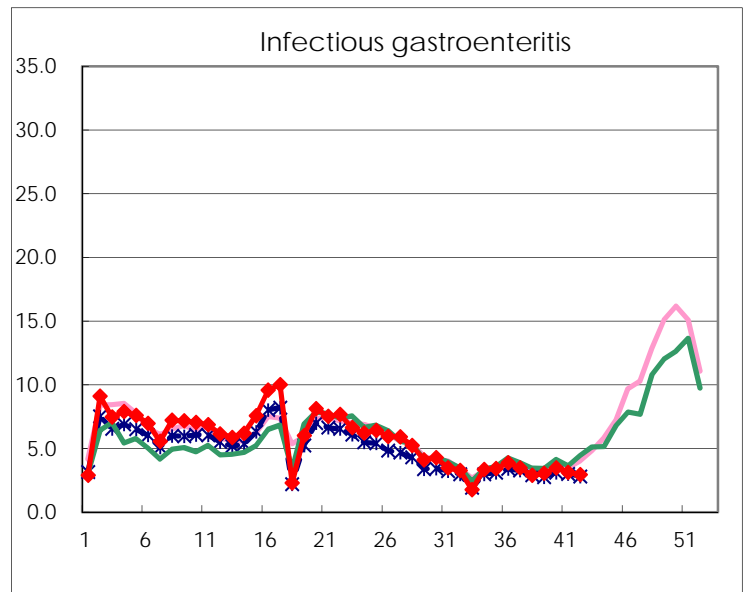
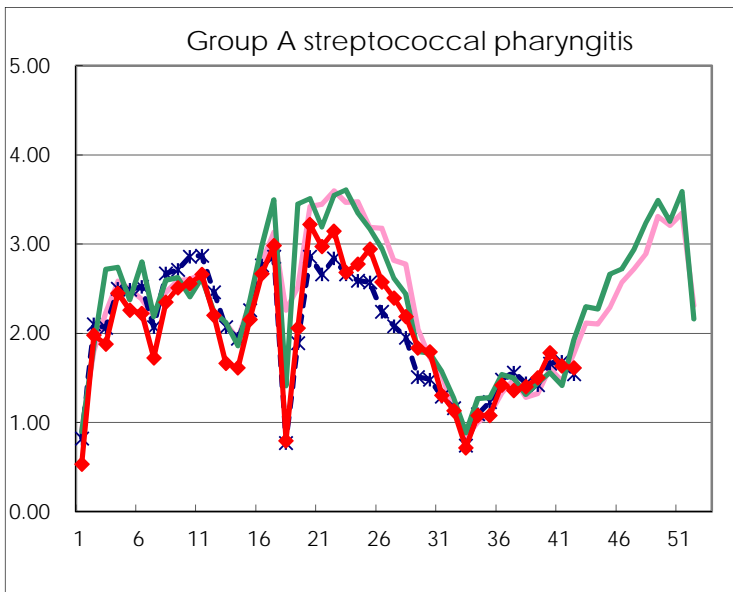
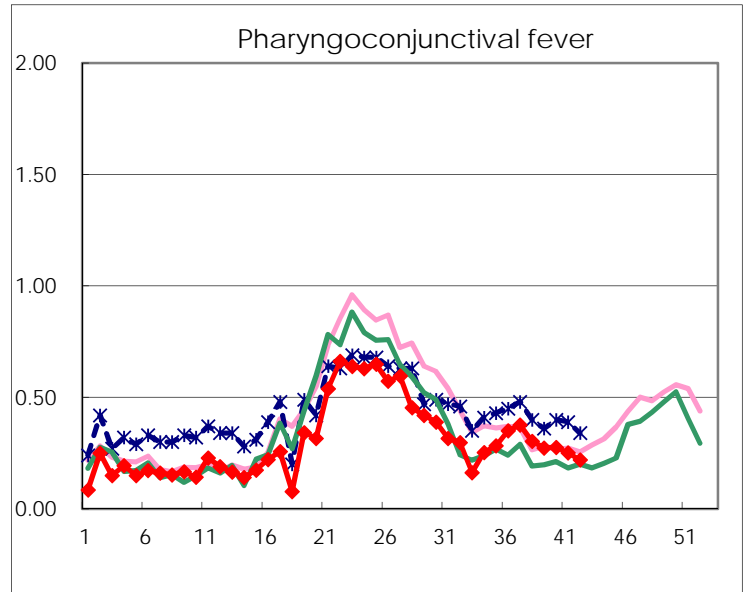
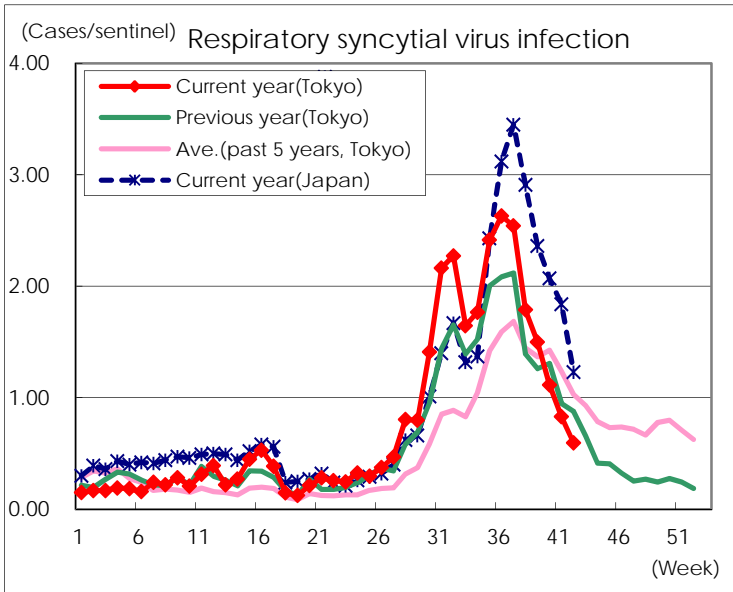
Category	Diseases	Tokyo					Japan	
		39th	40th	41st	42nd	Cum 2019	42nd	Cum 2019
V	Amebiasis	4	2	3		131	6	698
	Viral hepatitis(excluding hepatitis A and E)	1	1		1	77	2	269
	CRE infection	3	8	6	6	174	18	1,763
	Acute Flaccid Paralysis (excluding Acute poliomyelitis)				1	5	1	62
	Acute encephalitis(excluding JE and WNE)	2		2	1	66	6	702
	Cryptosporidiosis					4	1	19
	Creutzfeldt-Jakob disease				1	15	1	152
	Severe invasive streptococcal infections(TSLs)	3	3	2		99	7	730
	Acquired immunodeficiency syndrome (AIDS)	11	6	7	4	309	10	946
	Giardiasis					5	2	36
	Invasive <i>Haemophilus influenzae</i> disease		2		3	70	5	452
	Invasive meningococcal disease	1				4	1	40
	Invasive pneumococcal disease	5	1	7	1	293	25	2,526
	Varicella (limited to hospitalized case)			2	1	58	3	378
	Congenital rubella syndrome					1		3
	Syphilis	28	41	30	26	1,391	65	5,351
	Disseminated cryptococcosis			1		10	3	116
	Tetanus					6		101
	Vancomycin-resistant <i>S. aureus</i> infection							
	Vancomycin-resistant <i>Enterococcus</i> infection					6		61
	Pertussis	19	22	28	18	1,150	204	14,013
Rubella	4	3	2	1	843	7	2,238	
Measles	5	6		1	119	4	723	
MDRA infection					2		24	

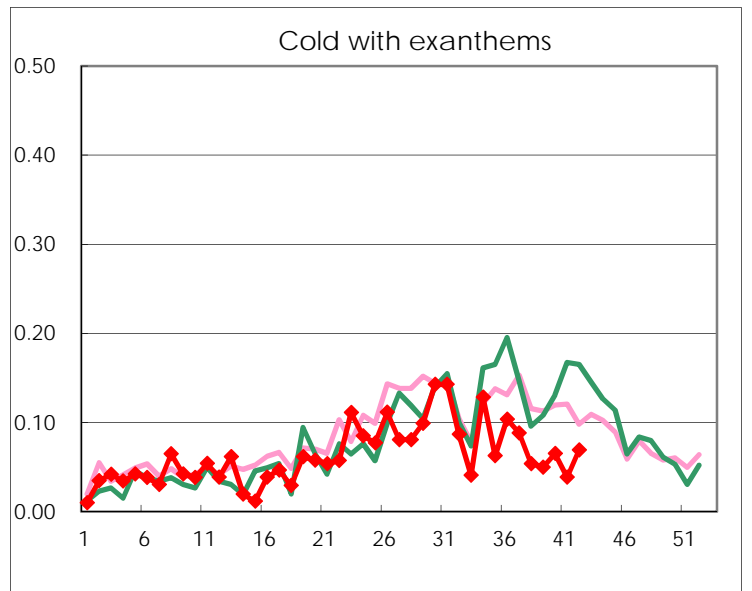
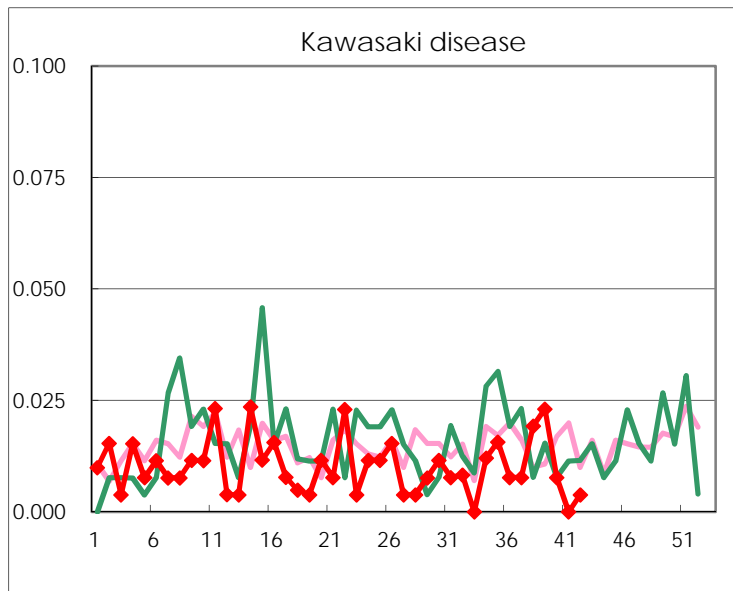
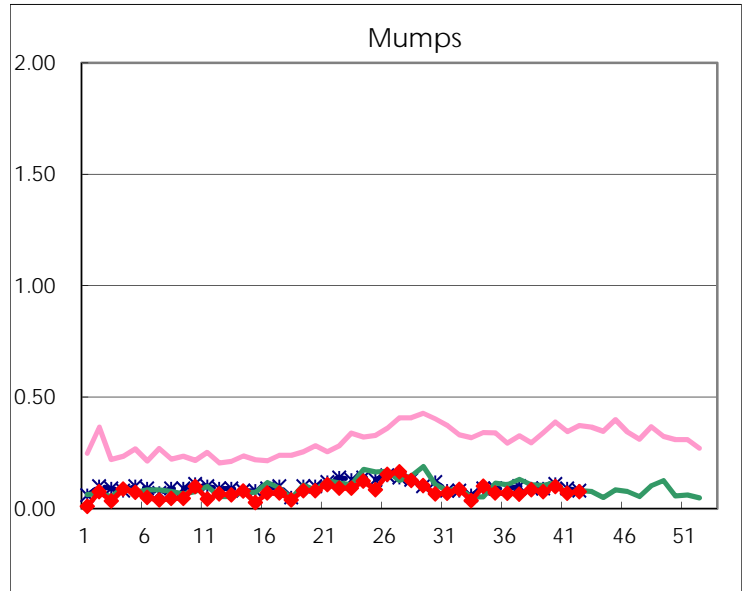
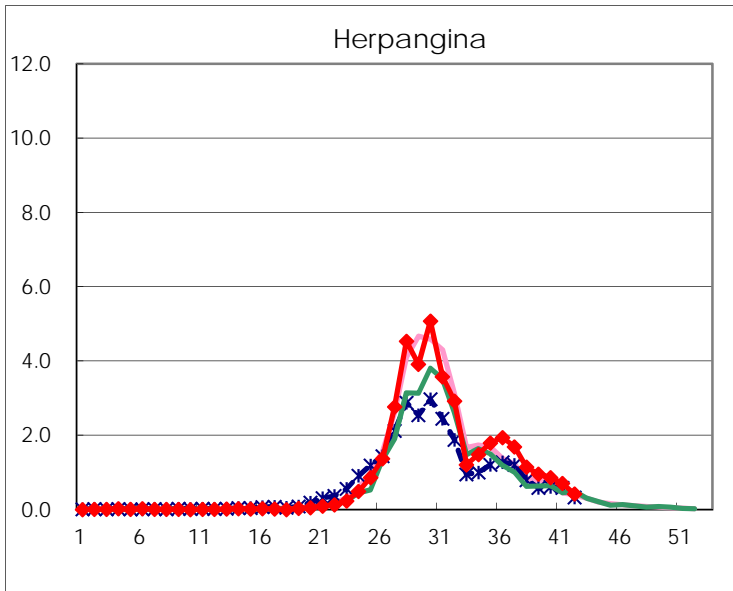
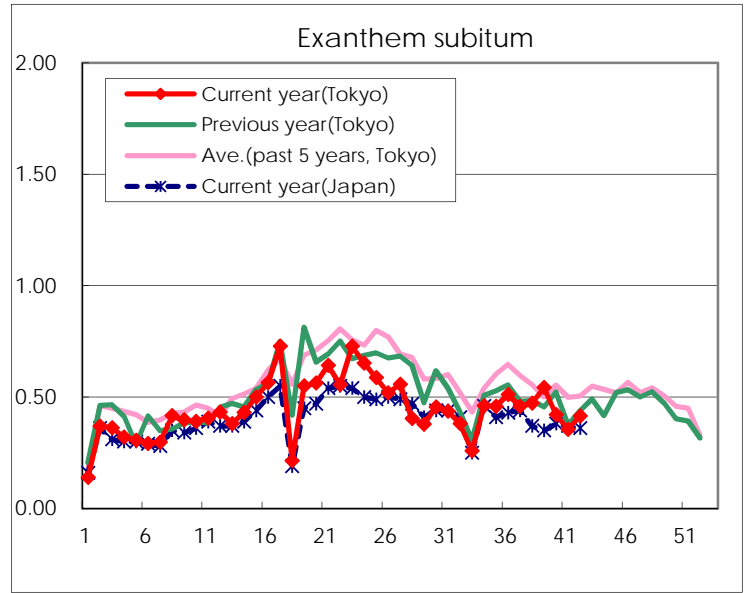
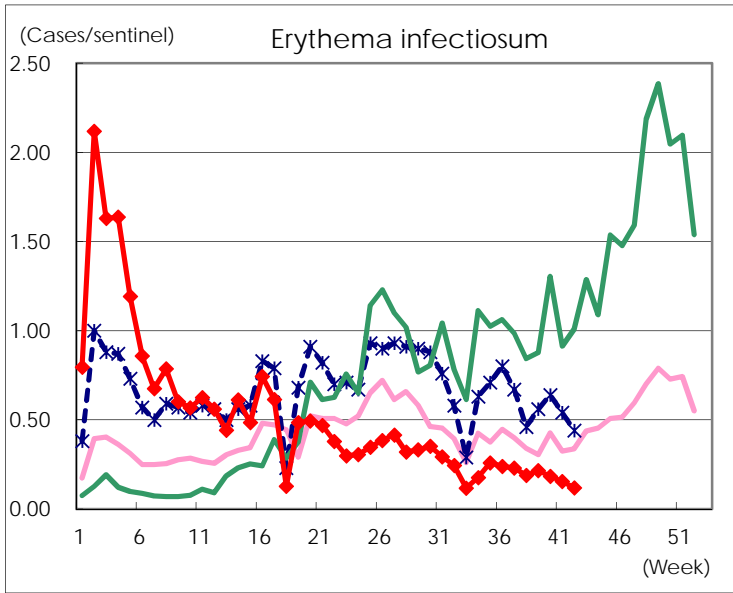
Number of patients with the diseases to be reported
by the designated clinics and hospitals

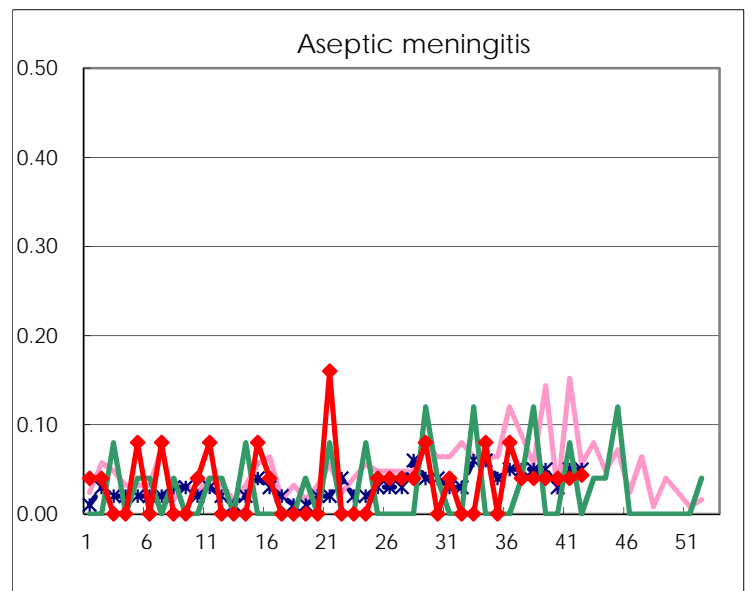
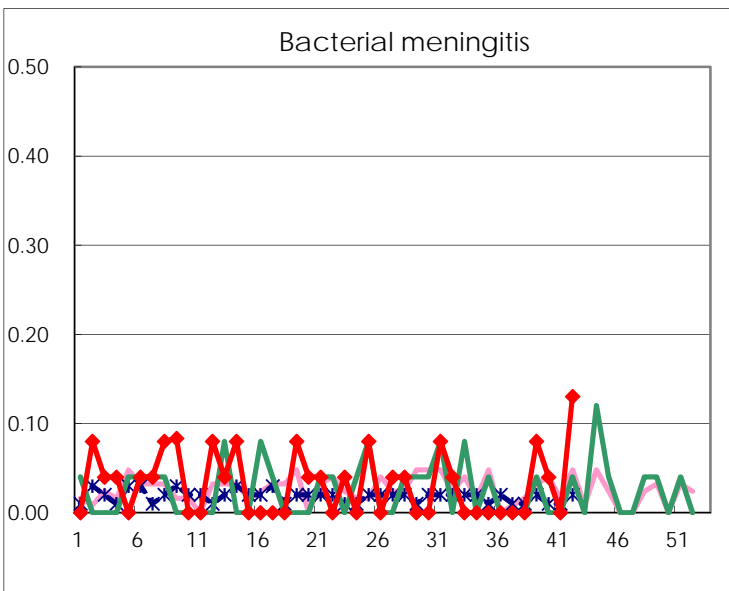
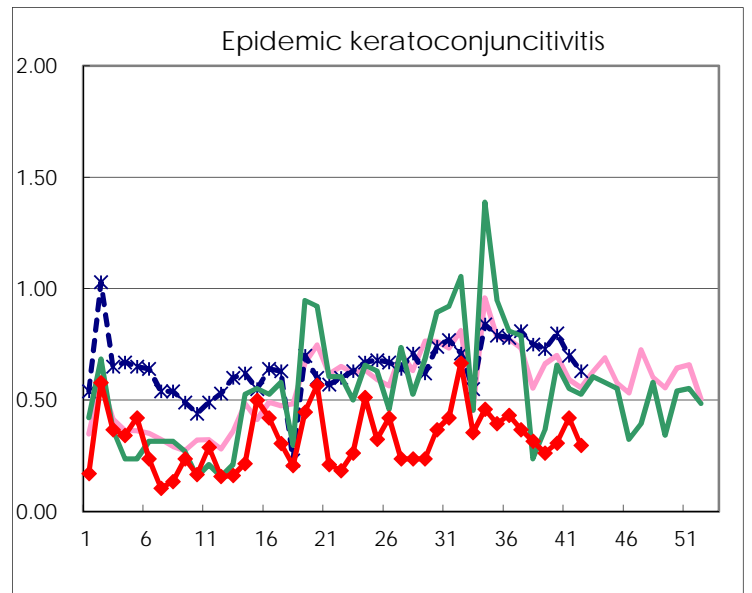
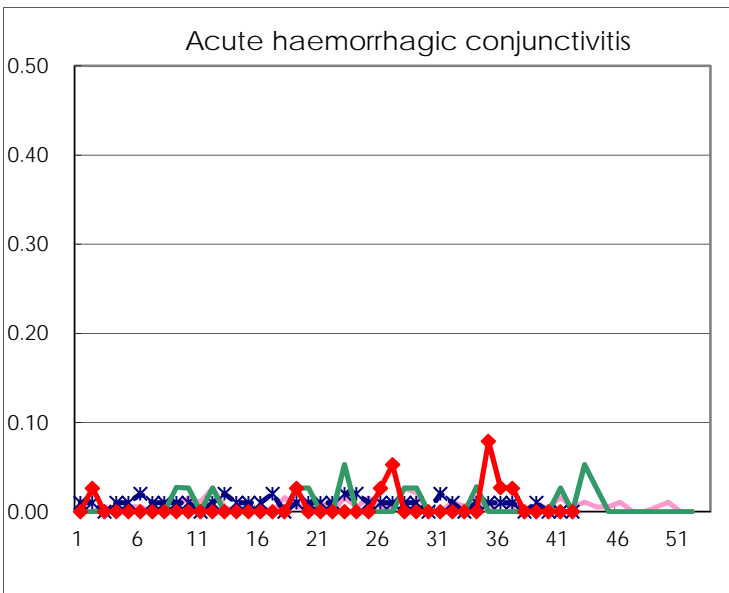
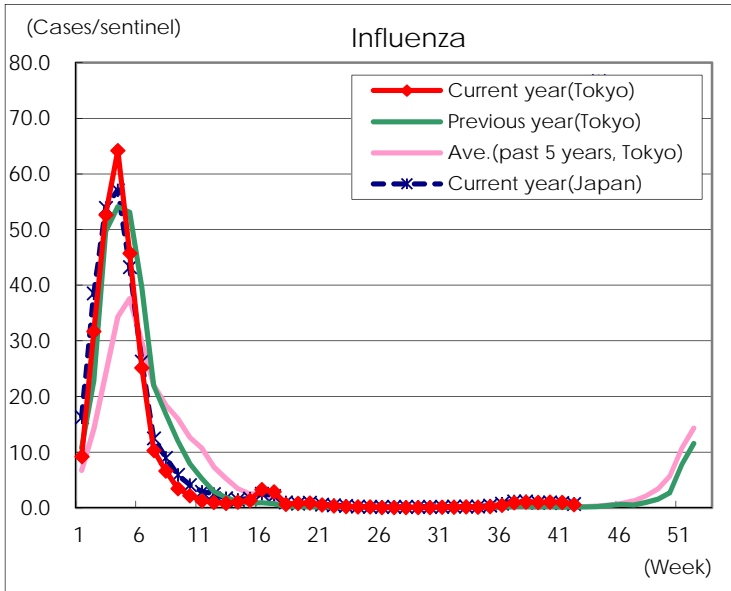
Diseases	Tokyo				
	39th	40th	41st	42nd	/sentinel
Respiratory syncytial virus infection	390	291	215	155	0.60
Pharyngoconjunctival fever	71	72	65	57	0.22
Group A streptococcal pharyngitis	390	465	423	419	1.61
Infectious gastroenteritis	788	908	809	765	2.94
Chickenpox	71	92	63	81	0.31
Hand, foot, and mouth disease	682	695	600	509	1.96
Erythema infectiosum	56	48	40	31	0.12
Exanthem subitum	141	110	92	108	0.42
Herpangina	248	226	183	109	0.42
Mumps	20	26	18	20	0.08
Kawasaki disease	6	2		1	
Cold with exanthems	13	17	10	18	0.07
Influenza	402	435	411	243	0.59
Acute hemorrhagic conjunctivitis					
Epidemic keratoconjunctivitis	10	12	16	11	0.30
Bacterial meningitis	2	1		3	0.13
Aseptic meningitis	1	1	1	1	0.04
<i>Mycoplasma pneumoniae</i>	11	12	5	4	0.17
Chlamydial pneumonia (excluding psittacosis)	1				
Infectious gastroenteritis (only by Rotavirus)					
Influenza-Associated Hospitalizations	3	4	8	3	0.13

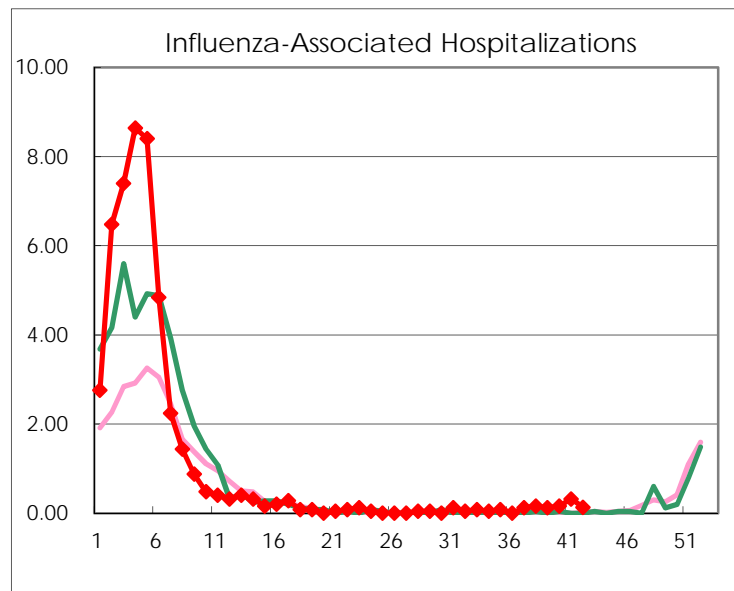
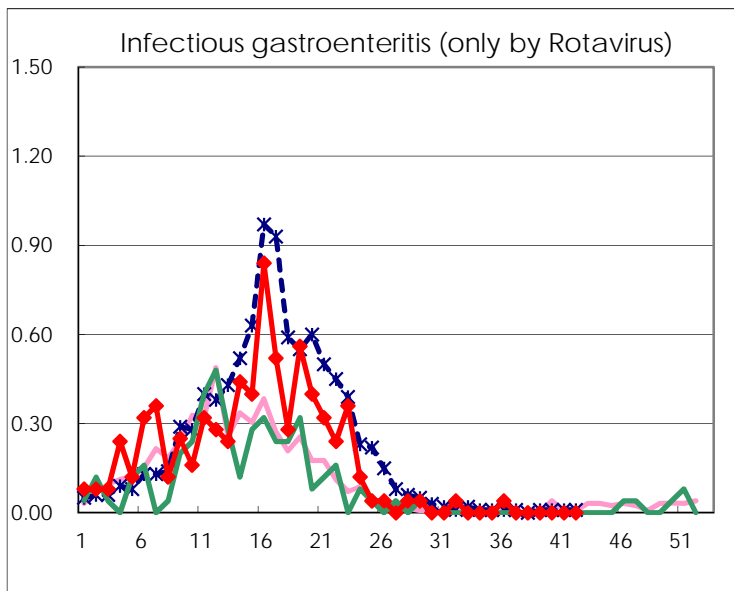
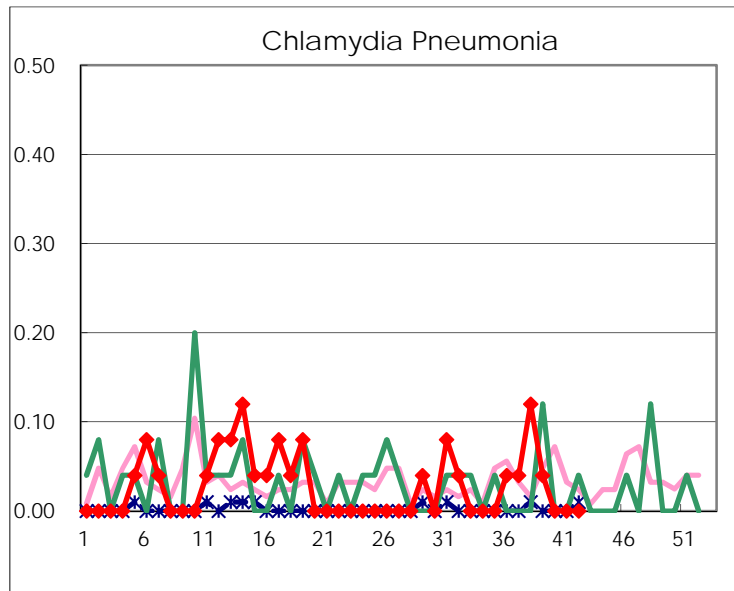
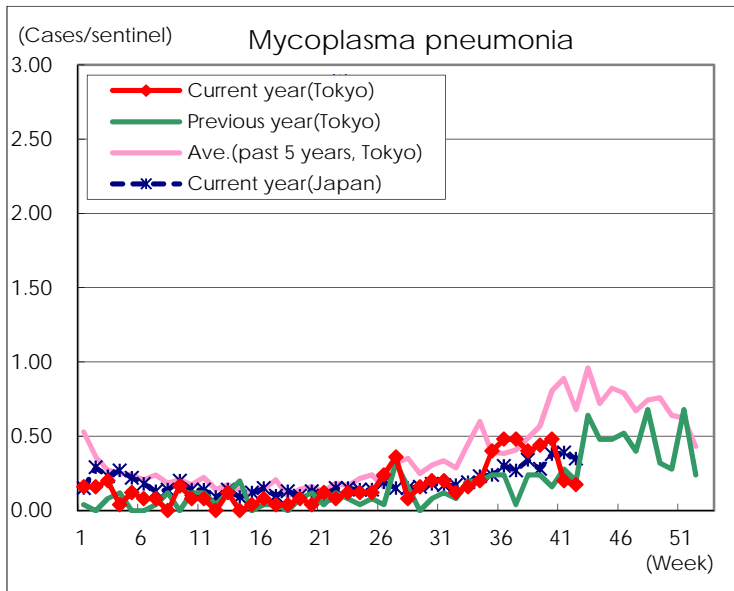
(Blank means 0.)

Disease Trend Graph (weekly reported cases per sentinel in comparison)









Number of sentinel facilities for weekly reporting		
Types of sentinels	Number of sentinels	Sentinels having reported
Pediatric	264	260
Influenza	419	415
Ophthalmic	39	37
Specially-designated	25	23