

7 November 2019 / Number 44

Surveillance System in Tokyo, Japan

The infectious diseases which all physicians must report

All physicians must report to health centers the incidence of the diseases which are shown at page one. Health centers electronically report the individual cases to Tokyo Metropolitan Infectious Disease Surveillance Center.

The infectious diseases required to be reported by the sentinels

The numbers of patients who visit the sentinel clinics or hospitals during a week are reported to health centers in Tokyo. And they electronically report the numbers to Tokyo Metropolitan Infectious Disease Surveillance Center. We have about 500 sentinel clinics and hospitals in Tokyo.

Tokyo Metropolitan Institute of Public Health

TEL:81-3-3363-3213 FAX:81-3-5332-7365

e-mail:www@tokyo-eiken.go.jp

URL:idsc.tokyo-eiken.go.jp/

Number of patients with the diseases which all physicians must report

Category	Diseases	Tokyo					Japan	
		41st	42nd	43rd	44th	Cum 2019	44th	Cum 2019
I	Ebola hemorrhagic fever							
	Crimean-Congo hemorrhagic fever							
	Smallpox							
	South American hemorrhagic fever							
	Plague							
	Marburg disease							
	Lassa fever							
II	Acute poliomyelitis							
	Tuberculosis	55	53	49	62	2,659	322	17,855
	Diphtheria							
	Severe Acute Respiratory Syndrome(SARS)							
	Middle East Respiratory Syndrome (MERS)							
	Avian influenza H5N1							
	Avian influenza H7N9							
III	Cholera					2		4
	Shigellosis	1		1	1	18	2	84
	Enterohemorrhagic Escherichia coli infection	7	12	8	5	355	75	3,341
	Typhoid fever					3		34
	Paratyphoid fever					3		14
IV	Hepatitis E	1	3	3	2	112	7	421
	West Nile fever							
	Hepatitis A	3		4		129	2	385
	Echinococcosis						1	18
	Yellow fever							
	Psittacosis					3		13
	Omsk hemorrhagic fever							
	Relapsing fever							5
	Kyasanur forest disease							
	Q fever							
	Rabies							
	Coccidioidomycosis							2
	Monkeypox							
	Zika virus infection						1	2
	Severe Fever with Thrombocytopenia Syndrome					1		96
	Hemorrhagic fever with renal syndrome							
	Western equine encephalitis							
	Tick-borne encephalitis							
	Anthrax							
	Chikungunya fever	1	1			8		43
	Scrub typhus(Tsutsugamushi disease)					1	5	100
	Dengue fever	8			3	112	7	407
	Eastern equine encephalitis							
	Avian influenza (excluding H5N1 and H7N9)							
	Nipah virus infection							
	Japanese spotted fever						8	275
	Japanese encephalitis							6
	Hantavirus pulmonary syndrome							
	Herpes B virus infection							
	Glanders							
	Brucellosis					1		2
	Venezuelan equine encephalitis							
	Hendra virus infection							
Epidemic typhus								
Botulism							1	
Malaria				1	17	1	48	
Tularemia								
Lyme disease			1		1	2	16	
Lyssavirus infection(excluding rabies)								
Rift valley fever								
Melioidosis							2	
Legionellosis	2	1	4	3	161	49	2,016	
Leptospirosis		2			8		26	
Rocky mountain spotted fever								

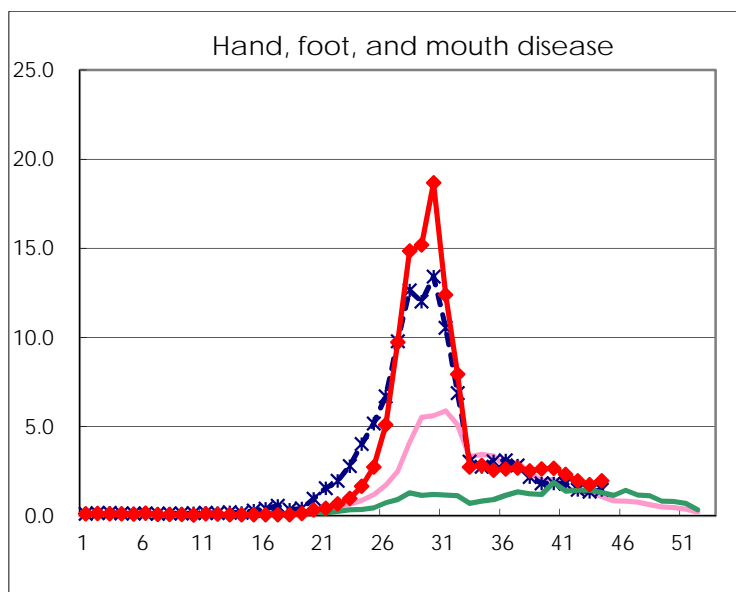
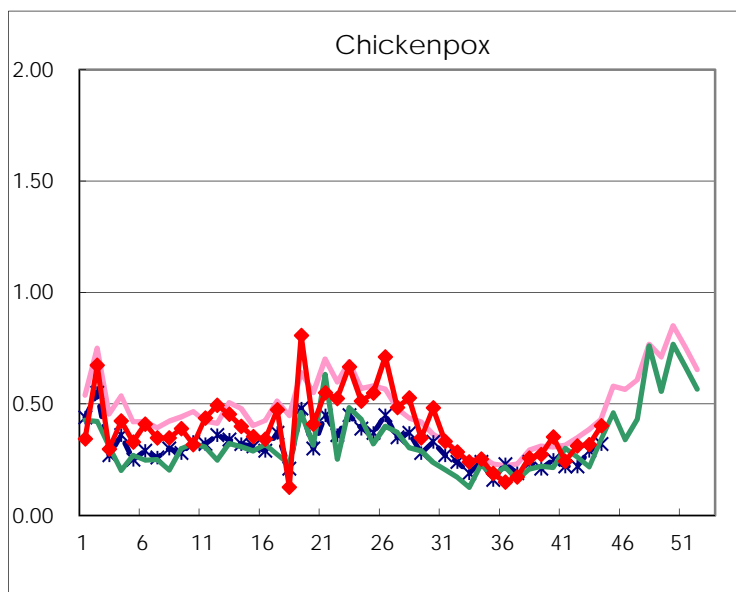
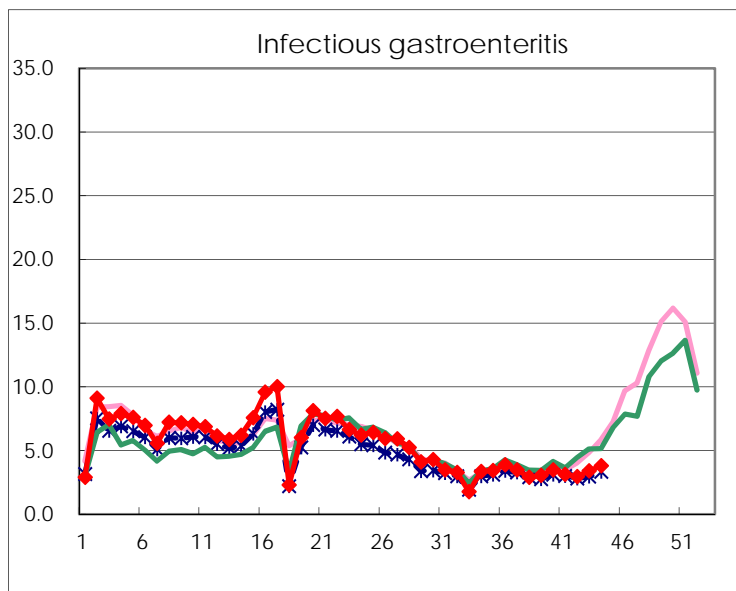
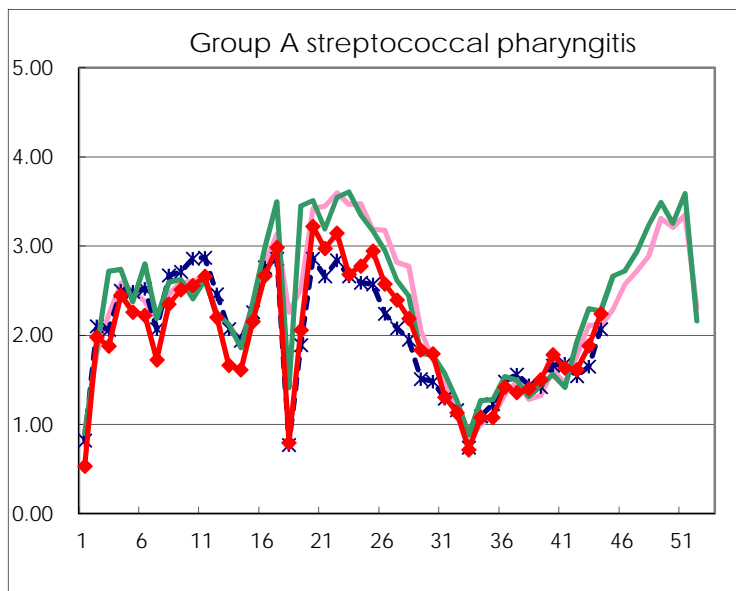
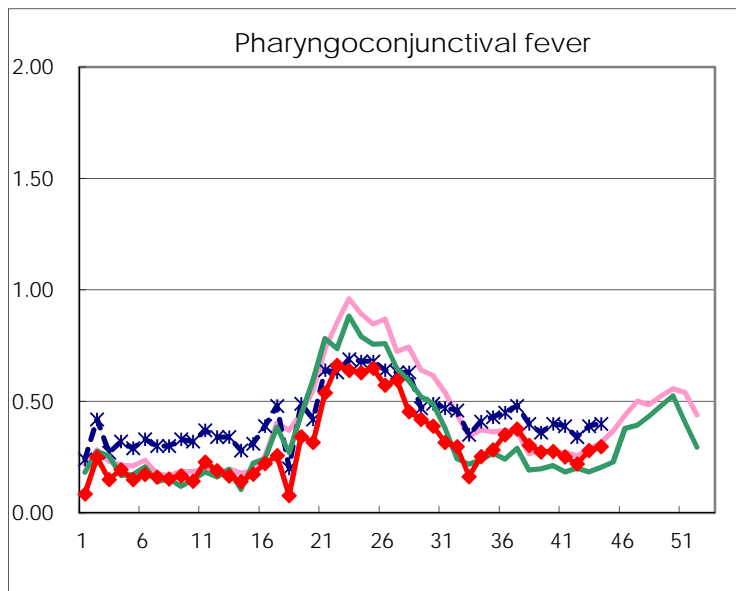
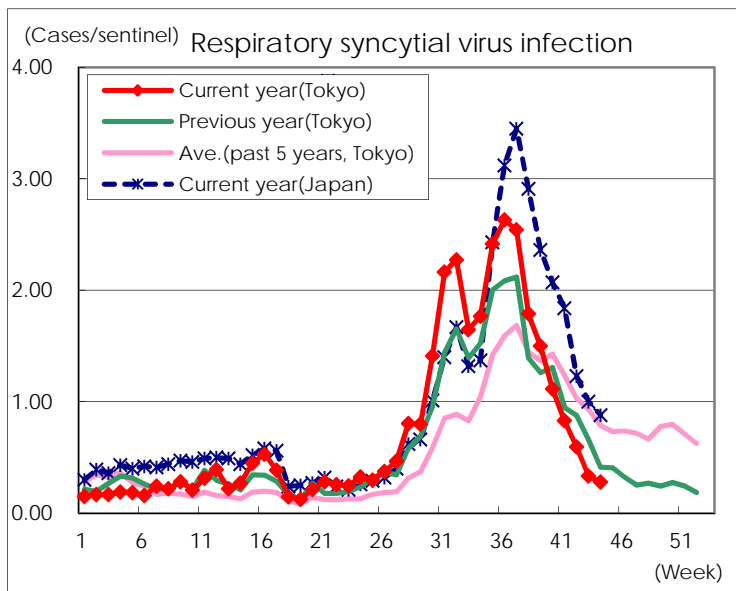
Category	Diseases	Tokyo					Japan	
		41st	42nd	43rd	44th	Cum 2019	44th	Cum 2019
V	Amebiasis	3		4	3	138	5	722
	Viral hepatitis(excluding hepatitis A and E)		1	2	4	83	5	283
	CRE infection	6	7	4	8	187	48	1,890
	Acute Flaccid Paralysis (excluding Acute poliomyelitis)		1			5		63
	Acute encephalitis(excluding JE and WNE)	2	1	3	2	71	10	728
	Cryptosporidiosis					4		19
	Creutzfeldt-Jakob disease		1	1	1	17	3	161
	Severe invasive streptococcal infections(TSLs)	2		3	2	104	14	764
	Acquired immunodeficiency syndrome (AIDS)	7	4	9	4	322	13	996
	Giardiasis			2	1	8	1	41
	Invasive <i>Haemophilus influenzae</i> disease		3	1	1	72	4	468
	Invasive meningococcal disease					4		41
	Invasive pneumococcal disease	7	1	3	11	307	44	2,631
	Varicella (limited to hospitalized case)	3	1	2	2	63	3	397
	Congenital rubella syndrome				1	2	1	4
	Syphilis	31	33	32	30	1,461	74	5,597
	Disseminated cryptococcosis	1			1	11	2	124
	Tetanus				1	7	4	111
	Vancomycin-resistant <i>S. aureus</i> infection							
	Vancomycin-resistant <i>Enterococcus</i> infection					6	3	64
	Pertussis	28	18	23	33	1,206	235	14,668
	Rubella	2	2	2	3	849	10	2,256
Measles		1			120	3	729	
MDRA infection					2		24	

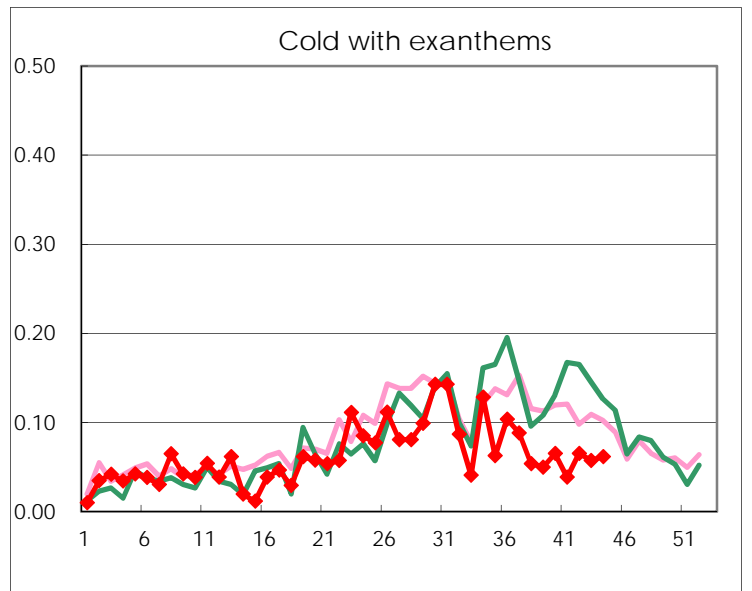
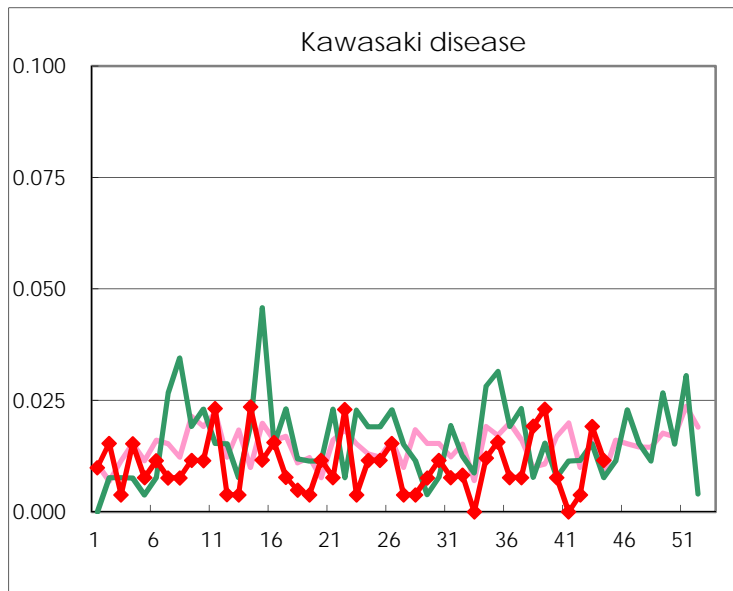
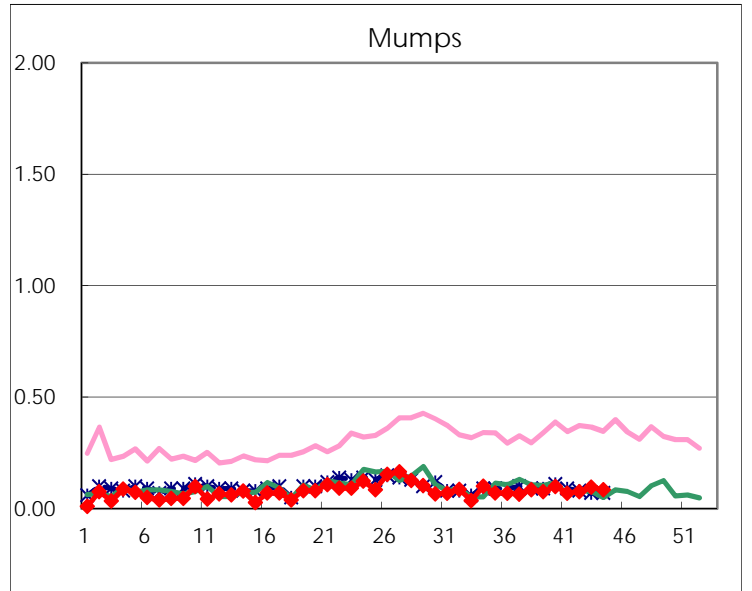
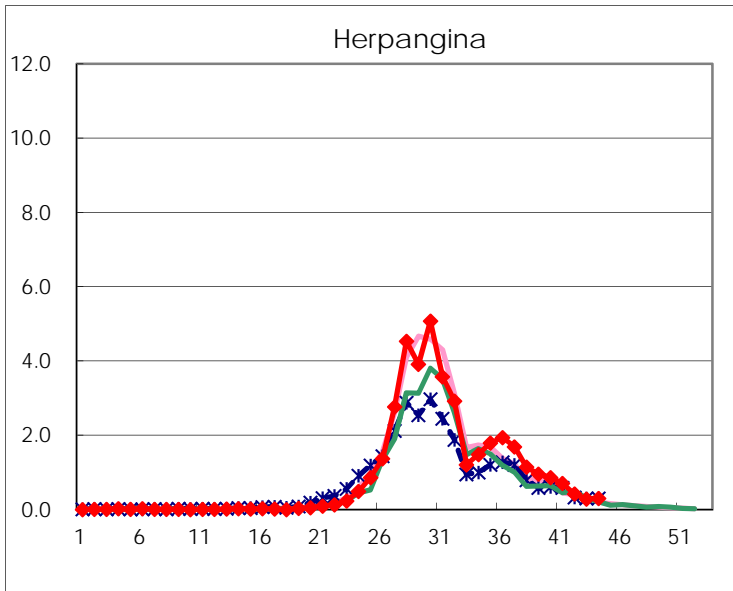
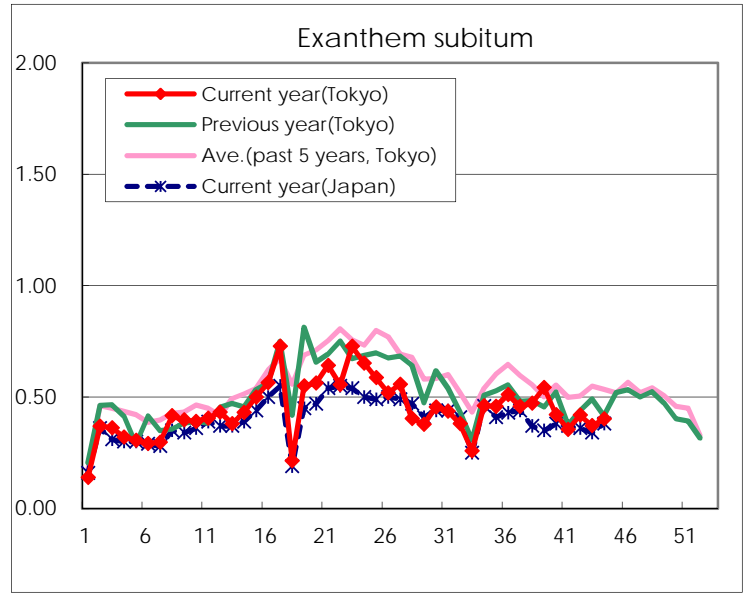
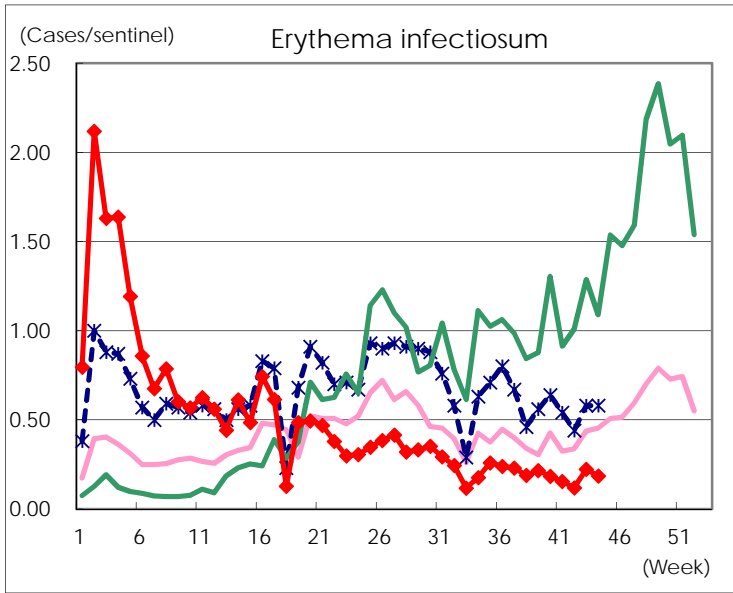
Number of patients with the diseases to be reported
by the designated clinics and hospitals

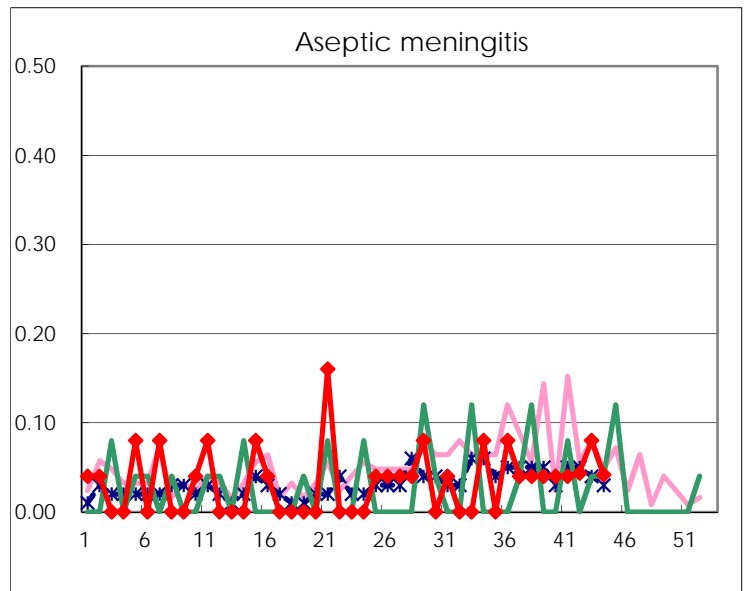
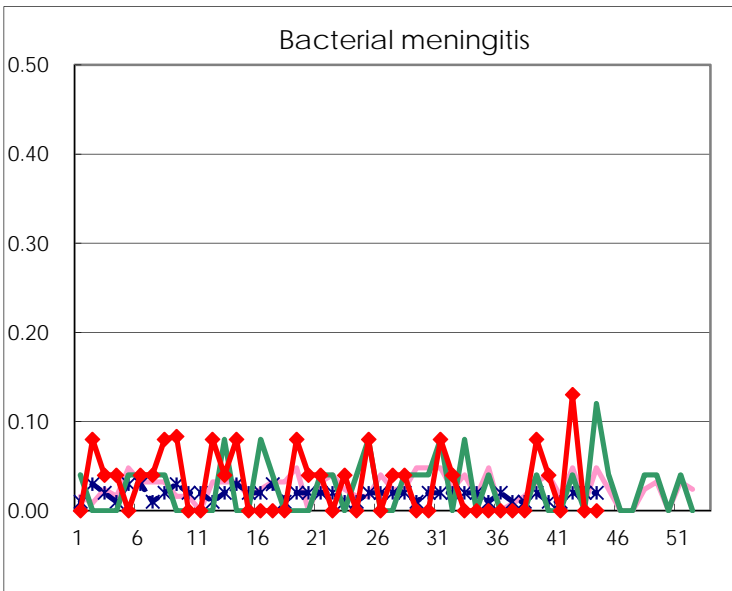
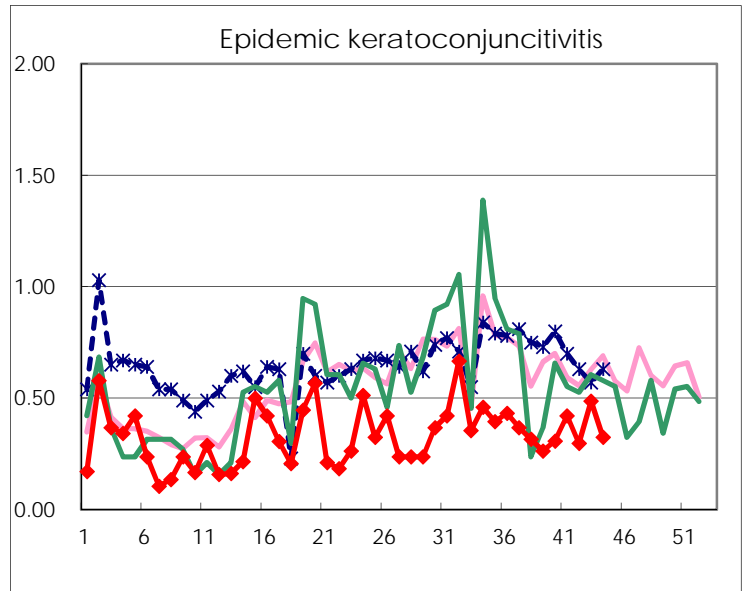
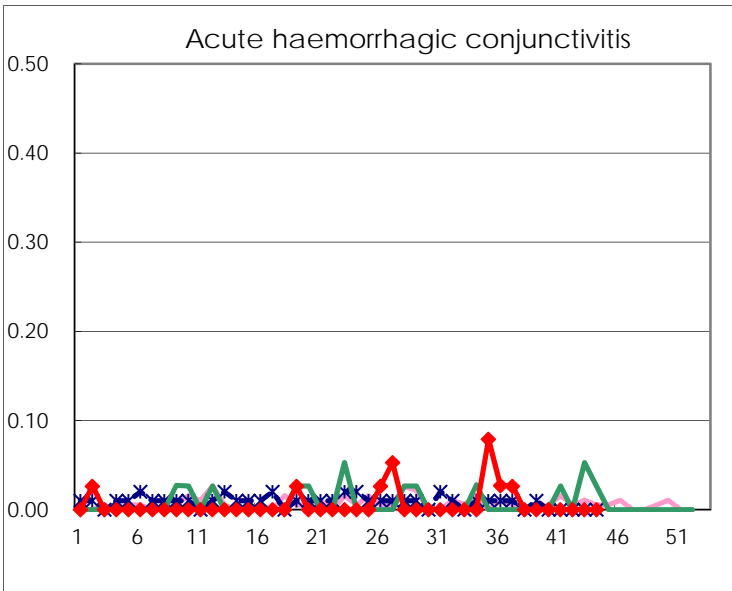
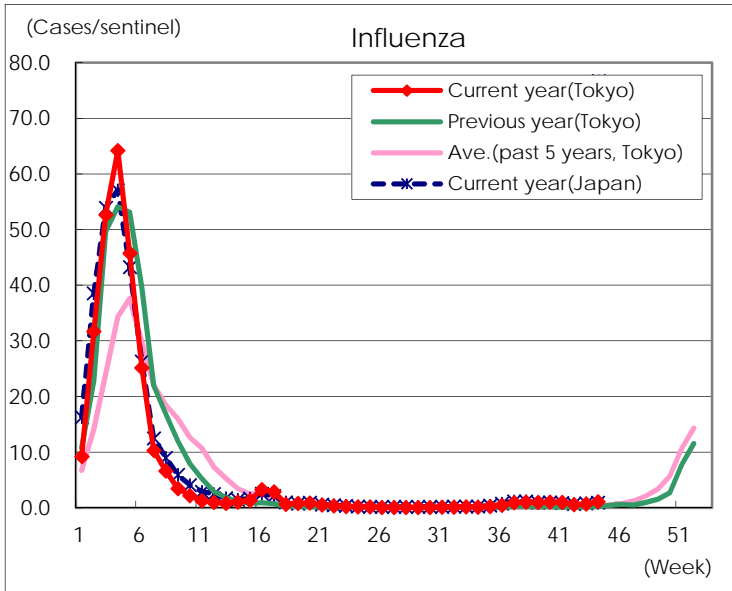
Diseases	Tokyo				
	41st	42nd	43rd	44th	/sentinel
Respiratory syncytial virus infection	215	155	87	72	0.28
Pharyngoconjunctival fever	65	57	73	77	0.30
Group A streptococcal pharyngitis	423	419	491	580	2.24
Infectious gastroenteritis	809	765	887	983	3.80
Chickenpox	63	81	83	104	0.40
Hand, foot, and mouth disease	600	509	453	506	1.95
Erythema infectiosum	40	31	58	48	0.19
Exanthem subitum	92	109	97	104	0.40
Herpangina	183	109	75	78	0.30
Mumps	18	20	25	22	0.08
Kawasaki disease		1	5	3	0.01
Cold with exanthems	10	17	15	16	0.06
Influenza	411	243	284	459	1.12
Acute hemorrhagic conjunctivitis					
Epidemic keratoconjunctivitis	16	11	18	12	0.32
Bacterial meningitis		3			
Aseptic meningitis	1	1	2	1	0.04
<i>Mycoplasma pneumoniae</i>	5	4	18	14	0.58
Chlamydial pneumonia (excluding psittacosis)			1	1	0.04
Infectious gastroenteritis (only by Rotavirus)					
Influenza-Associated Hospitalizations	8	3	3	1	0.04

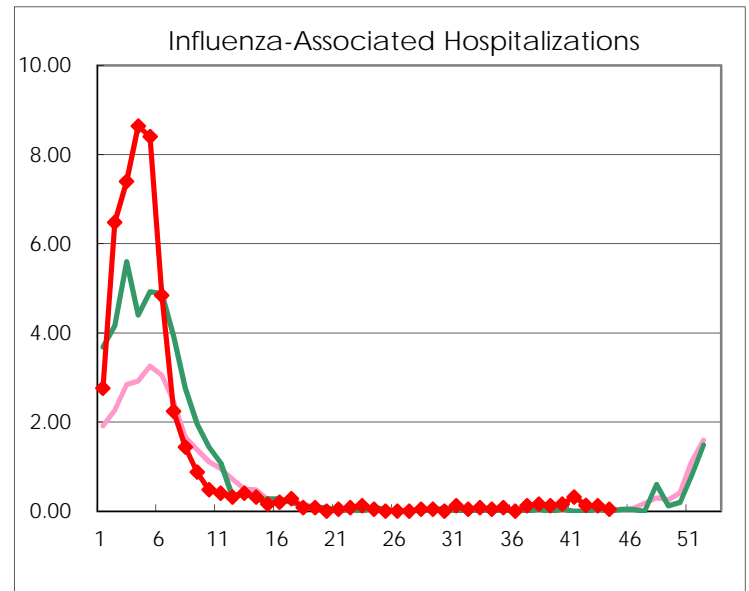
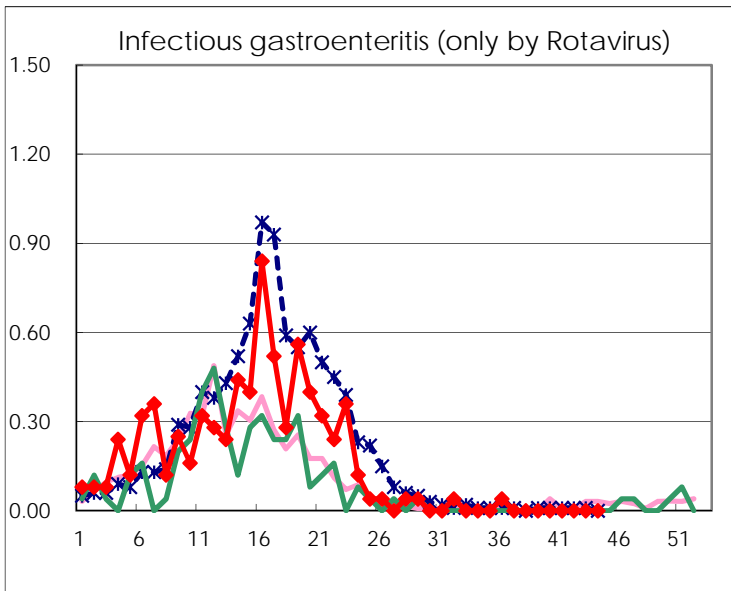
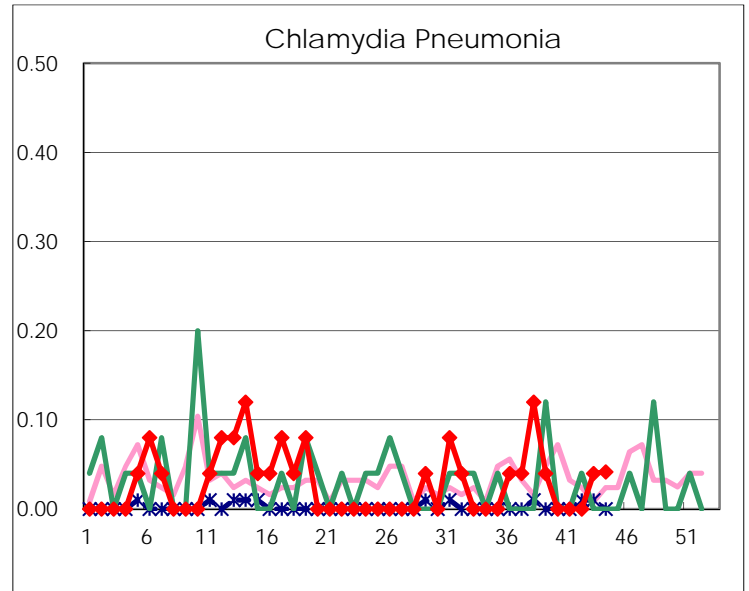
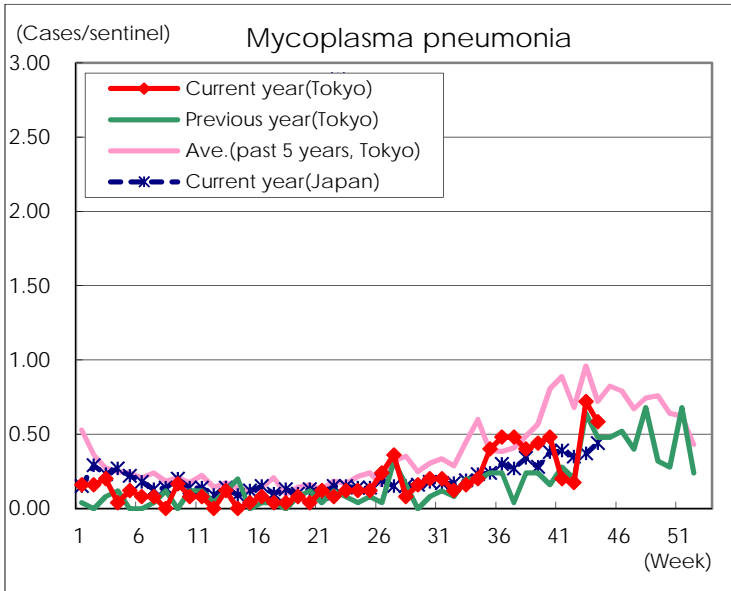
(Blank means 0.)

Disease Trend Graph (weekly reported cases per sentinel in comparison)









Number of sentinel facilities for weekly reporting		
Types of sentinels	Number of sentinels	Sentinels having reported
Pediatric	264	259
Influenza	419	409
Ophthalmic	39	37
Specially-designated	25	24