

14 November 2019 / Number 45

Surveillance System in Tokyo, Japan

The infectious diseases which all physicians must report

All physicians must report to health centers the incidence of the diseases which are shown at page one. Health centers electronically report the individual cases to Tokyo Metropolitan Infectious Disease Surveillance Center.

The infectious diseases required to be reported by the sentinels

The numbers of patients who visit the sentinel clinics or hospitals during a week are reported to health centers in Tokyo. And they electronically report the numbers to Tokyo Metropolitan Infectious Disease Surveillance Center. We have about 500 sentinel clinics and hospitals in Tokyo.

Tokyo Metropolitan Institute of Public Health

TEL:81-3-3363-3213 FAX:81-3-5332-7365

e-mail:www@tokyo-eiken.go.jp

URL:idsc.tokyo-eiken.go.jp/

Number of patients with the diseases which all physicians must report

Category	Diseases	Tokyo					Japan	
		42nd	43rd	44th	45th	Cum 2019	45th	Cum 2019
I	Ebola hemorrhagic fever							
	Crimean-Congo hemorrhagic fever							
	Smallpox							
	South American hemorrhagic fever							
	Plague							
	Marburg disease							
	Lassa fever							
II	Acute poliomyelitis							
	Tuberculosis	54	50	71	50	2,720	242	18,187
	Diphtheria							
	Severe Acute Respiratory Syndrome(SARS)							
	Middle East Respiratory Syndrome (MERS)							
	Avian influenza H5N1							
	Avian influenza H7N9							
III	Cholera					2	1	5
	Shigellosis		1	1	2	20	5	90
	Enterohemorrhagic Escherichia coli infection	12	8	5	6	361	44	3,391
	Typhoid fever					3		34
	Paratyphoid fever				1	4	2	16
IV	Hepatitis E	3	3	2	2	114	8	429
	West Nile fever							
	Hepatitis A		4		2	131	4	391
	Echinococcosis							18
	Yellow fever							
	Psittacosis					3		13
	Omsk hemorrhagic fever							
	Relapsing fever							5
	Kyasanur forest disease							
	Q fever							
	Rabies							
	Coccidioidomycosis							2
	Monkeypox							
	Zika virus infection							3
	Severe Fever with Thrombocytopenia Syndrome					1		96
	Hemorrhagic fever with renal syndrome							
	Western equine encephalitis							
	Tick-borne encephalitis							
	Anthrax							
	Chikungunya fever	1			1	9	1	44
	Scrub typhus(Tsutsugamushi disease)					1	15	115
	Dengue fever		1	3	4	117	6	416
	Eastern equine encephalitis							
	Avian influenza (excluding H5N1 and H7N9)							
	Nipah virus infection							
	Japanese spotted fever						11	289
	Japanese encephalitis						1	7
	Hantavirus pulmonary syndrome							
	Herpes B virus infection							
	Glanders							
	Brucellosis					1		2
	Venezuelan equine encephalitis							
	Hendra virus infection							
Epidemic typhus								
Botulism							1	
Malaria			1	2	19	1	50	
Tularemia								
Lyme disease		1			1		16	
Lyssavirus infection(excluding rabies)								
Rift valley fever								
Melioidosis							2	
Legionellosis	1	4	3	5	166	52	2,079	
Leptospirosis	2			1	9	1	27	
Rocky mountain spotted fever								

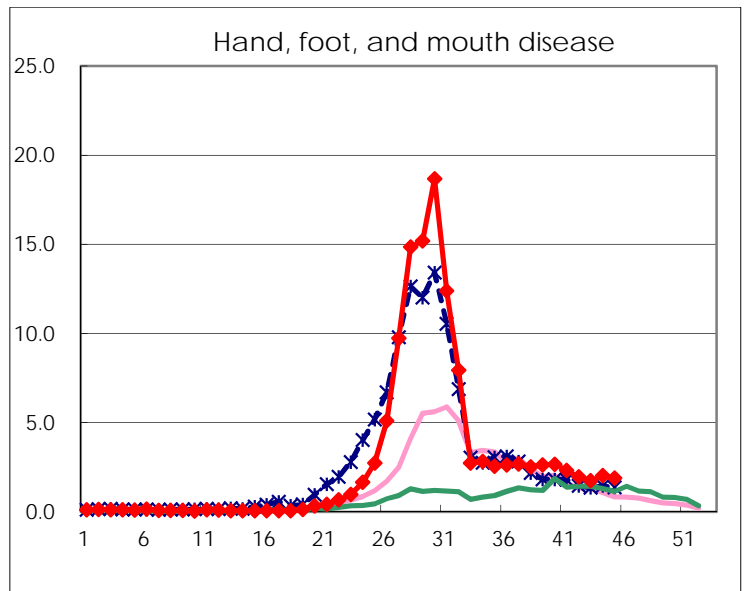
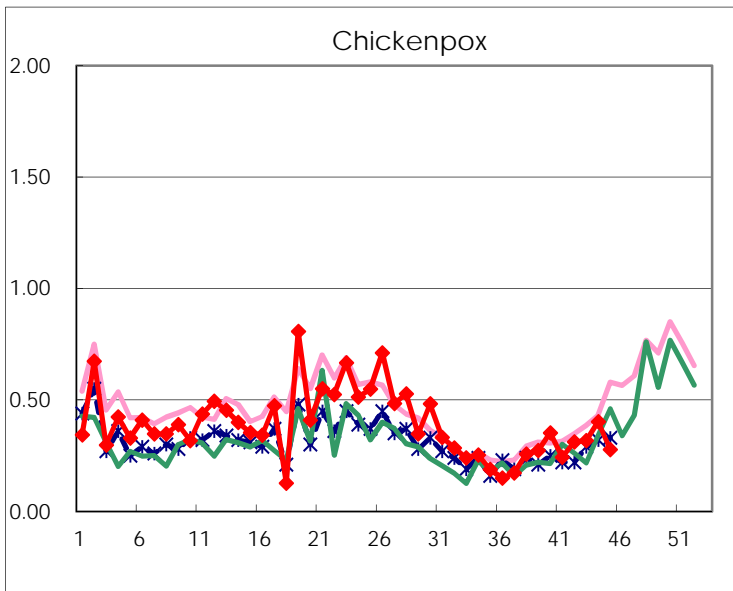
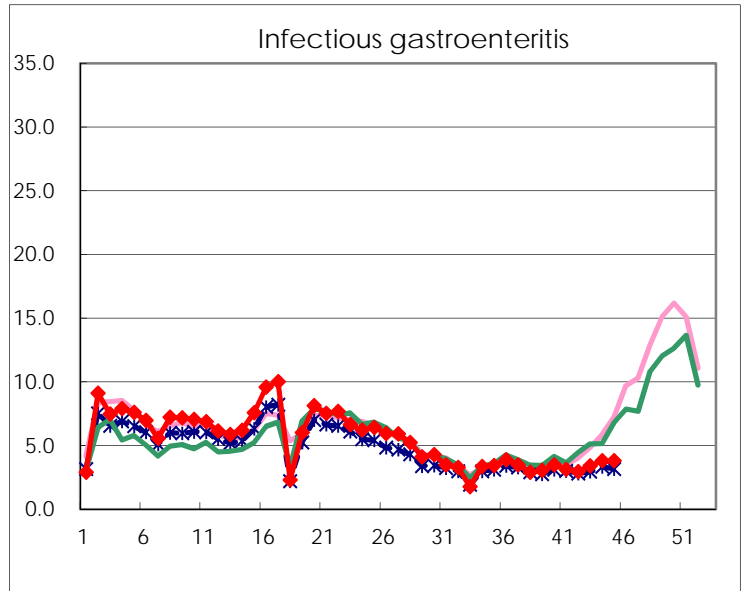
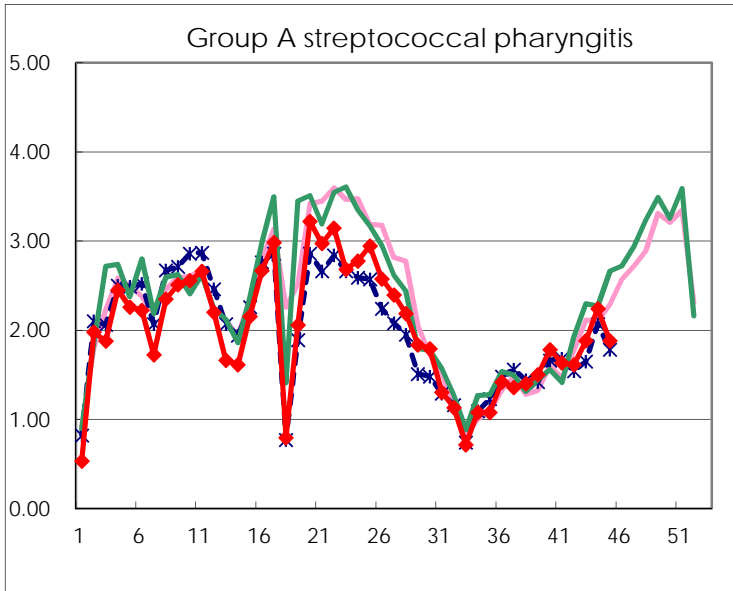
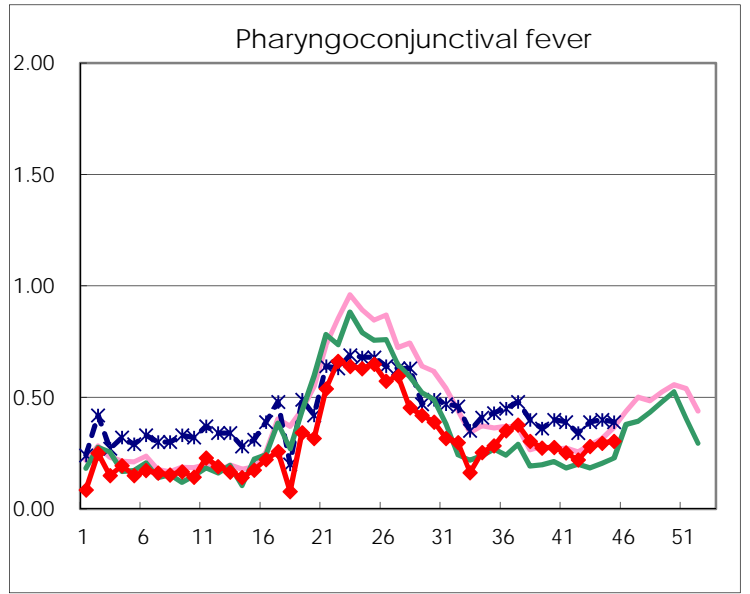
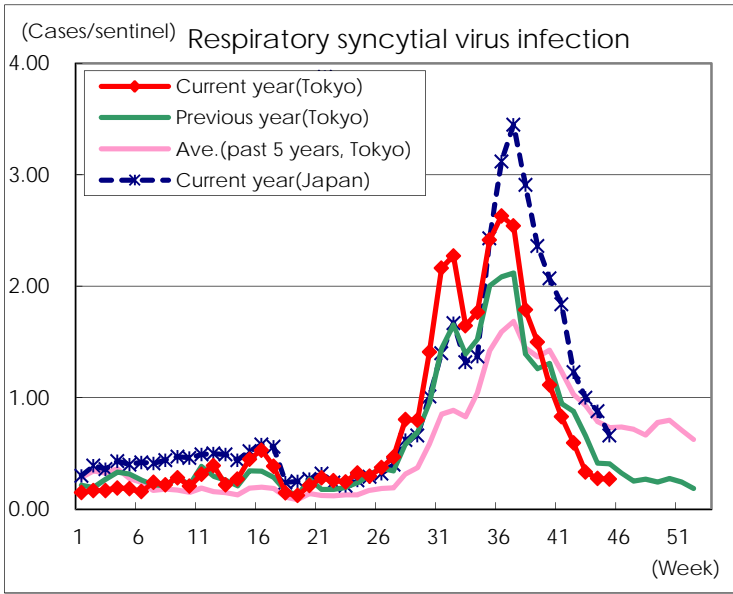
Category	Diseases	Tokyo					Japan	
		42nd	43rd	44th	45th	Cum 2019	45th	Cum 2019
V	Amebiasis		4	3	3	141	10	738
	Viral hepatitis(excluding hepatitis A and E)	1	2	4	2	85	1	289
	CRE infection	7	4	8	6	193	25	1,937
	Acute Flaccid Paralysis (excluding Acute poliomyelitis)	1				5	1	65
	Acute encephalitis(excluding JE and WNE)	1	3	2	1	72	9	745
	Cryptosporidiosis					4		19
	Creutzfeldt-Jakob disease	1	1	1		17	3	166
	Severe invasive streptococcal infections(TSLs)		3	2	3	107	15	788
	Acquired immunodeficiency syndrome (AIDS)	4	9	4	13	335	15	1,030
	Giardiasis		2	1	1	9	1	43
	Invasive <i>Haemophilus influenzae</i> disease	3	1	1	3	75	4	473
	Invasive meningococcal disease					4	1	42
	Invasive pneumococcal disease	1	3	12	2	310	41	2,693
	Varicella (limited to hospitalized case)	1	2	2	2	65	8	409
	Congenital rubella syndrome			1		2		4
	Syphilis	33	32	30	26	1,487	50	5,703
	Disseminated cryptococcosis			1		11	3	129
	Tetanus			1		7	1	112
	Vancomycin-resistant <i>S. aureus</i> infection							
	Vancomycin-resistant <i>Enterococcus</i> infection			1		7	1	67
	Pertussis	18	23	33	10	1,216	167	14,925
Rubella	2	2	4	1	851	3	2,260	
Measles	1				120	1	729	
MDRA infection					2		24	

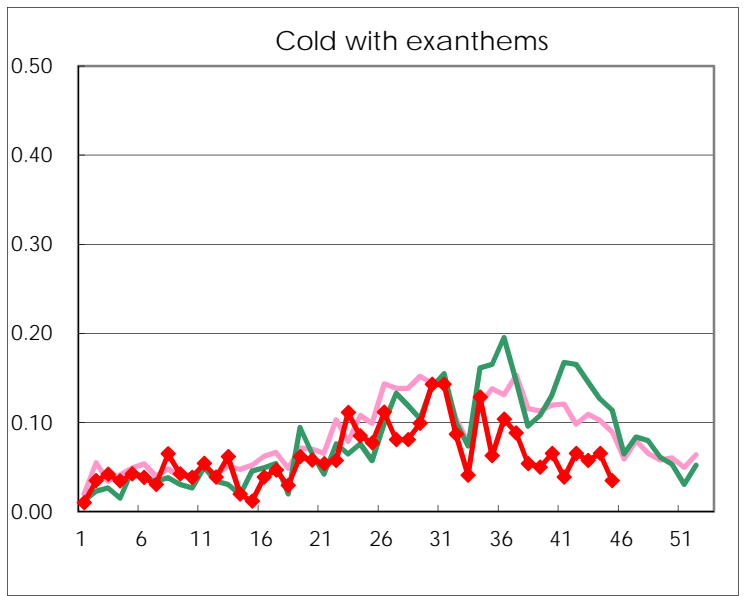
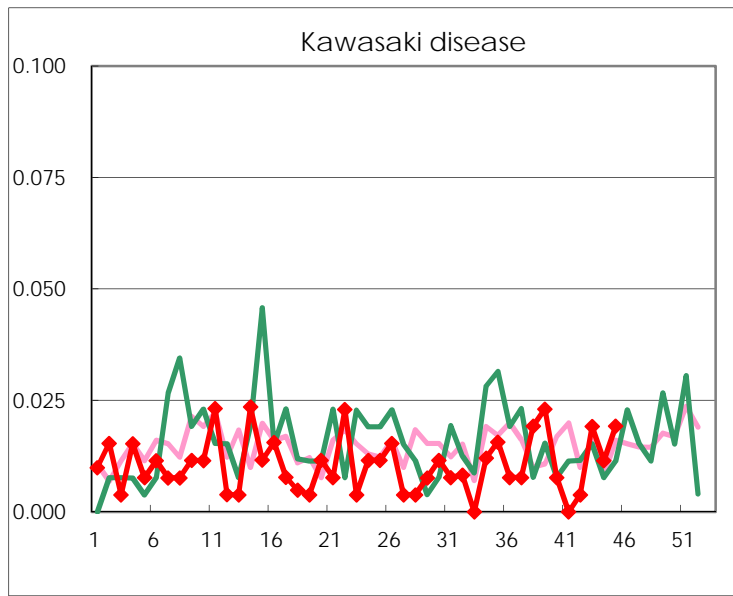
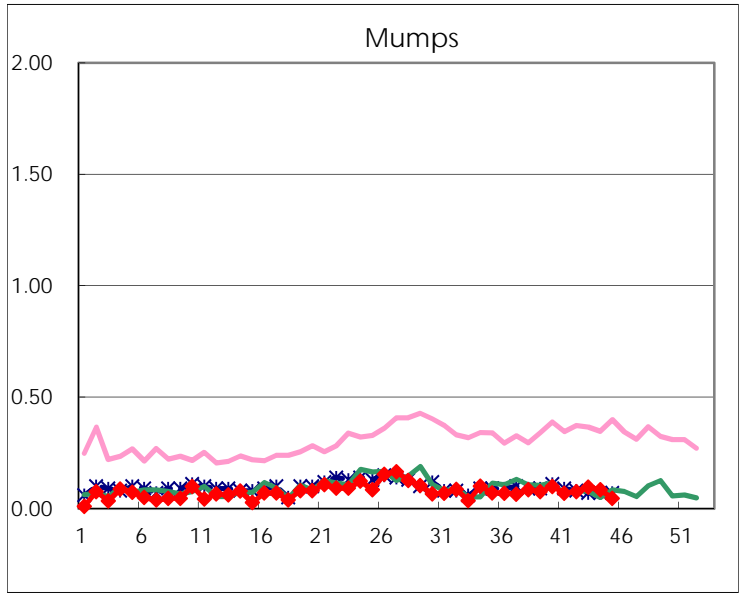
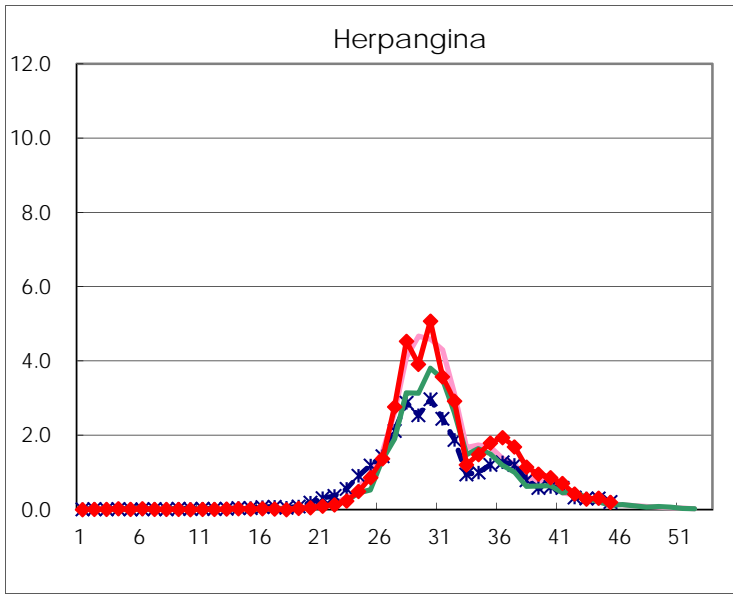
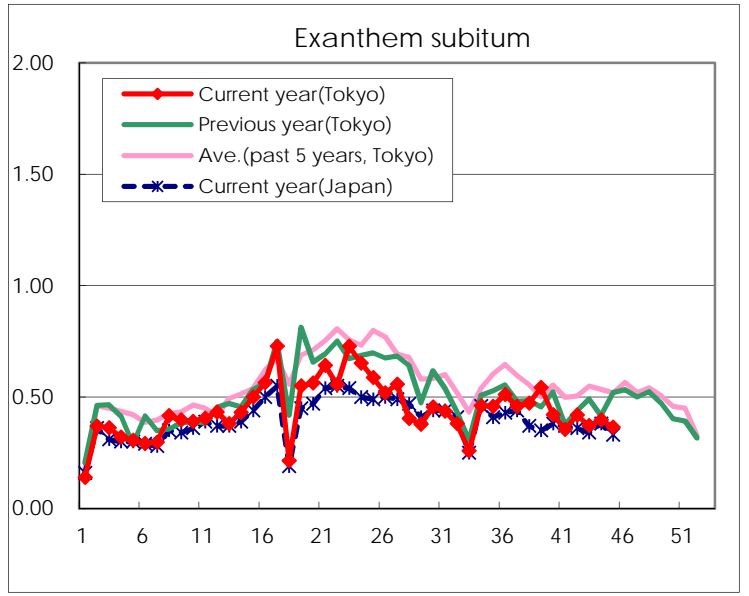
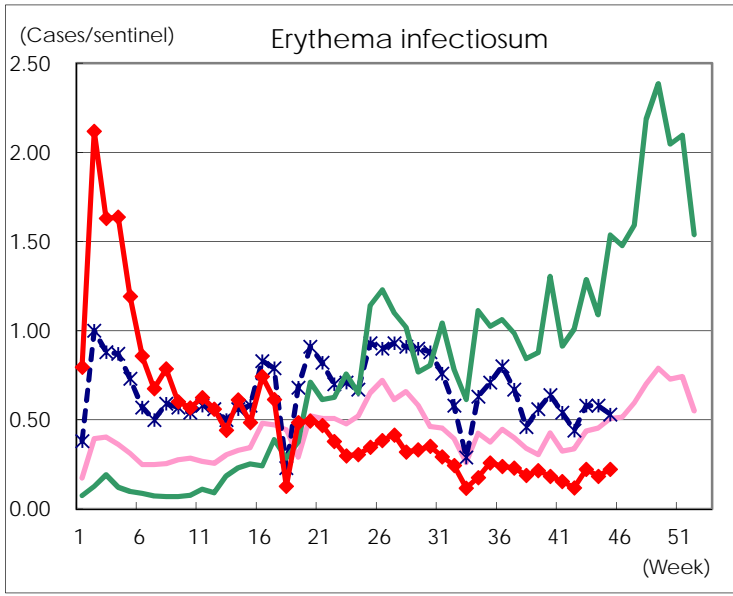
Number of patients with the diseases to be reported
by the designated clinics and hospitals

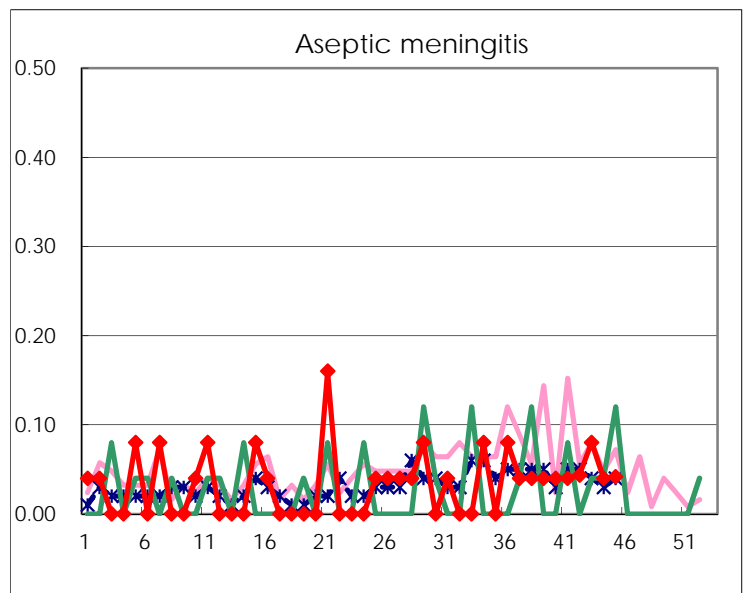
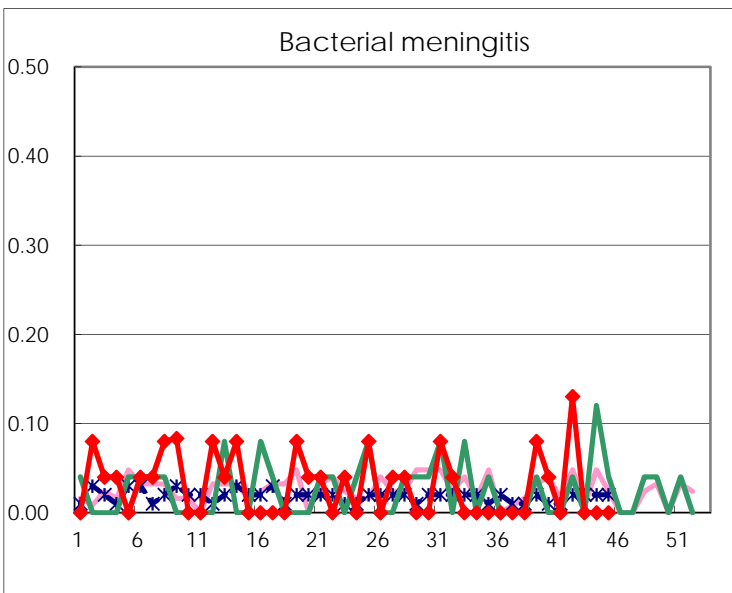
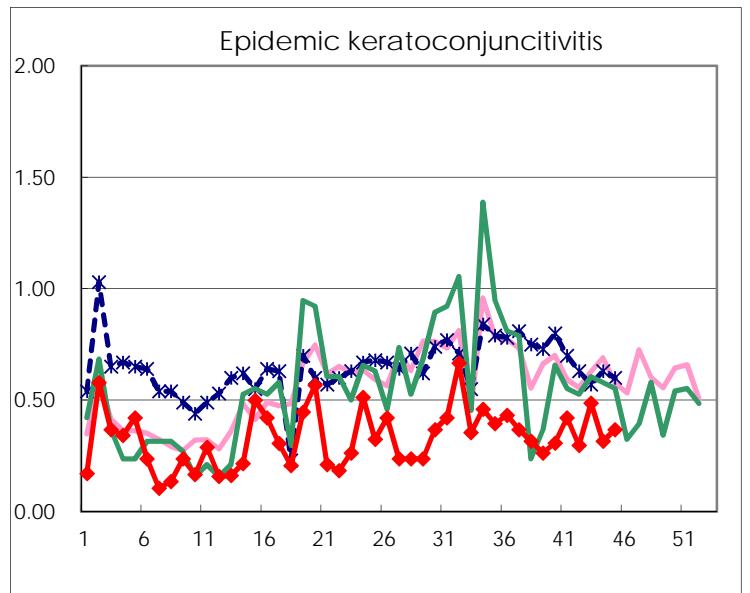
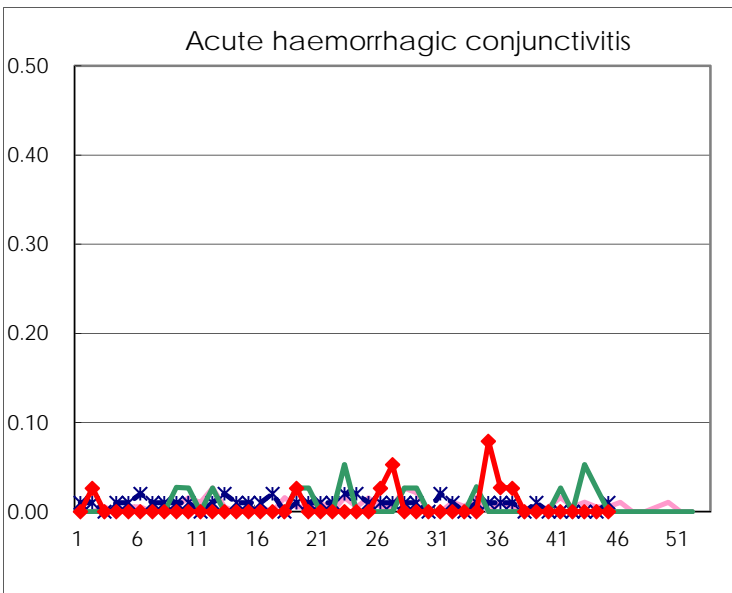
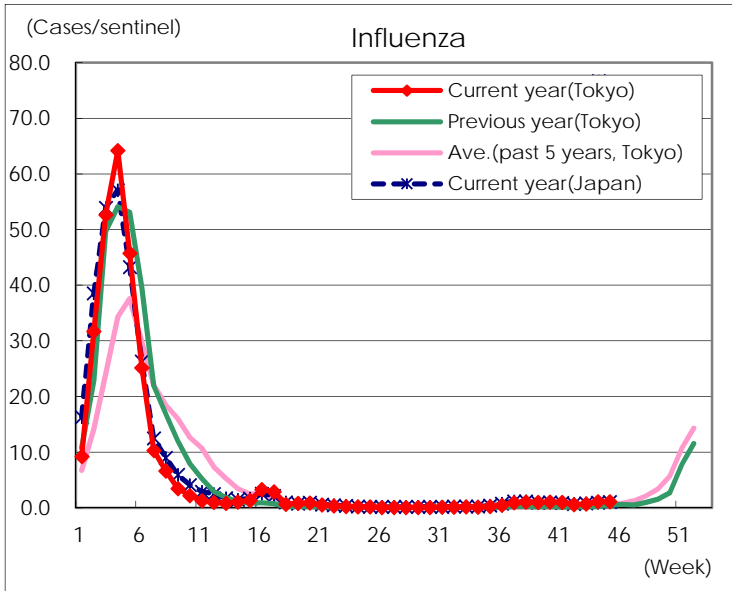
Diseases	Tokyo				
	42nd	43rd	44th	45th	/sentinel
Respiratory syncytial virus infection	155	87	72	70	0.27
Pharyngoconjunctival fever	57	73	77	79	0.30
Group A streptococcal pharyngitis	419	491	585	489	1.88
Infectious gastroenteritis	765	887	990	986	3.79
Chickenpox	81	83	105	72	0.28
Hand, foot, and mouth disease	509	453	528	491	1.89
Erythema infectiosum	31	58	48	58	0.22
Exanthem subitum	109	97	104	95	0.37
Herpangina	109	75	80	51	0.20
Mumps	20	25	22	12	0.05
Kawasaki disease	1	5	3	5	0.02
Cold with exanthems	17	15	17	9	0.03
Influenza	243	284	461	460	1.11
Acute hemorrhagic conjunctivitis					
Epidemic keratoconjunctivitis	11	18	12	14	0.37
Bacterial meningitis	3				
Aseptic meningitis	1	2	1	1	0.04
<i>Mycoplasma pneumoniae</i>	4	18	14	24	1.00
Chlamydial pneumonia (excluding psittacosis)		1	1		
Infectious gastroenteritis (only by Rotavirus)					
Influenza-Associated Hospitalizations	3	3	1	5	0.21

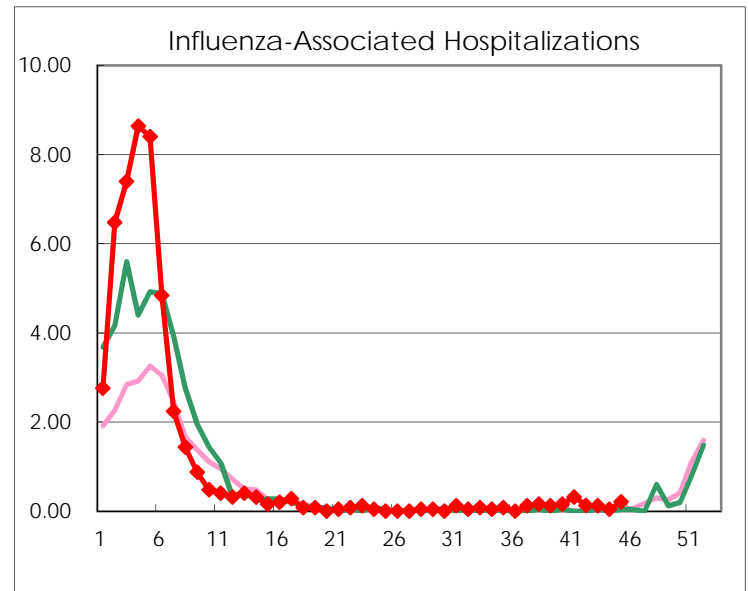
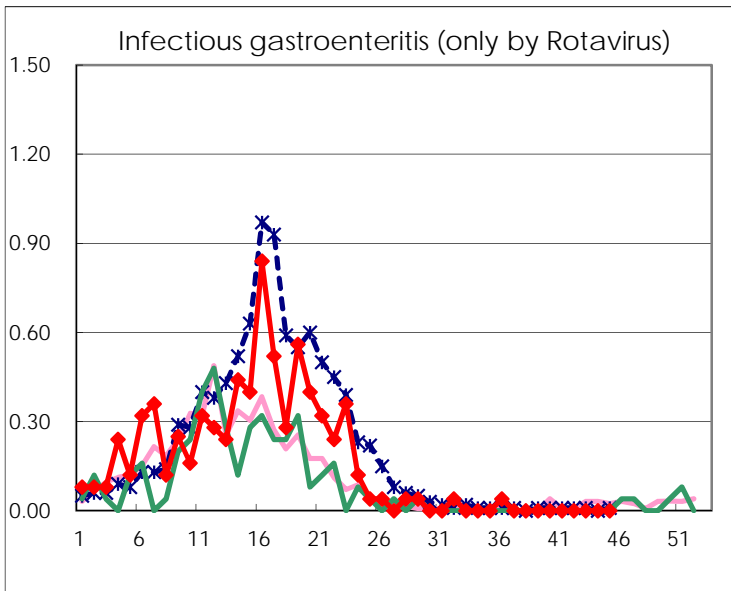
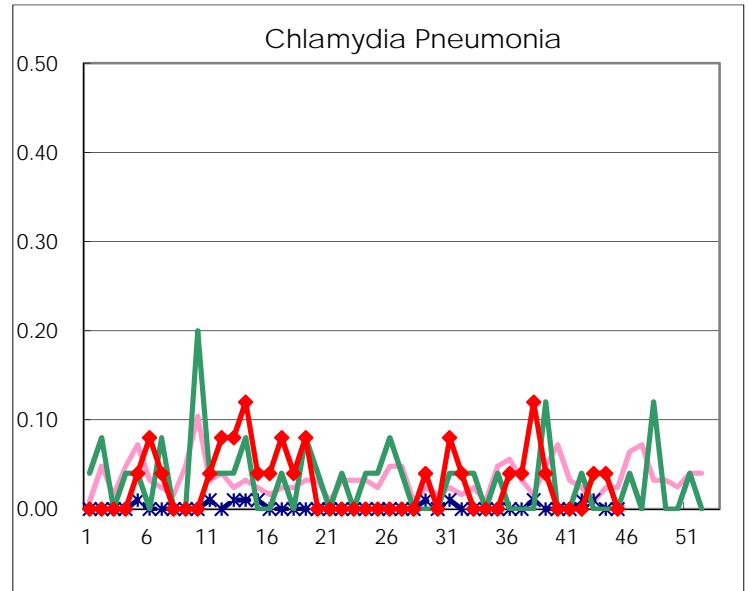
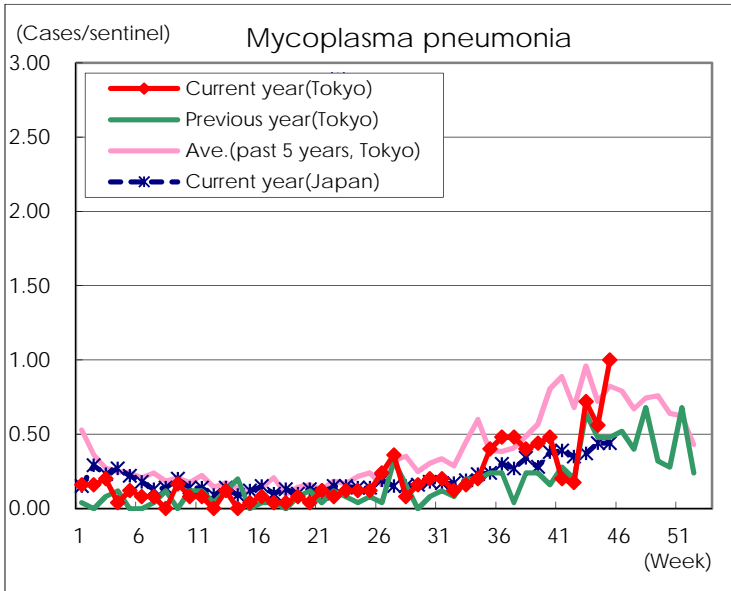
(Blank means 0.)

Disease Trend Graph (weekly reported cases per sentinel in comparison)









Number of sentinel facilities for weekly reporting		
Types of sentinels	Number of sentinels	Sentinels having reported
Pediatric	264	260
Influenza	419	415
Ophthalmic	39	38
Specially-designated	25	24