

28 November 2019 / Number 47

Surveillance System in Tokyo, Japan

The infectious diseases which all physicians must report

All physicians must report to health centers the incidence of the diseases which are shown at page one. Health centers electronically report the individual cases to Tokyo Metropolitan Infectious Disease Surveillance Center.

The infectious diseases required to be reported by the sentinels

The numbers of patients who visit the sentinel clinics or hospitals during a week are reported to health centers in Tokyo. And they electronically report the numbers to Tokyo Metropolitan Infectious Disease Surveillance Center. We have about 500 sentinel clinics and hospitals in Tokyo.

Tokyo Metropolitan Institute of Public Health

TEL:81-3-3363-3213 FAX:81-3-5332-7365

e-mail:www@tokyo-eiken.go.jp

URL:idsc.tokyo-eiken.go.jp/

Number of patients with the diseases which all physicians must report

Category	Diseases	Tokyo					Japan		
		44th	45th	46th	47th	Cum 2019	47th	Cum 2019	
I	Ebola hemorrhagic fever								
	Crimean-Congo hemorrhagic fever								
	Smallpox								
	South American hemorrhagic fever								
	Plague								
	Marburg disease								
	Lassa fever								
II	Acute poliomyelitis								
	Tuberculosis	79	54	65	47	2,848	317	19,062	
	Diphtheria								
	Severe Acute Respiratory Syndrome(SARS)								
	Middle East Respiratory Syndrome (MERS)								
	Avian influenza H5N1								
III	Avian influenza H7N9								
	Cholera					2		5	
	Shigellosis	1	2	1	3	23	9	101	
	Enterohemorrhagic Escherichia coli infection	5	6	2	8	371	72	3,545	
	Typhoid fever					3		34	
IV	Paratyphoid fever		1			4		18	
	Hepatitis E	2	2	1	1	116	5	442	
	West Nile fever								
	Hepatitis A		2	2	5	138	7	404	
	Echinococcosis						2	20	
	Yellow fever								
	Psittacosis					3		13	
	Omsk hemorrhagic fever								
	Relapsing fever							6	
	Kyasanur forest disease								
	Q fever						1	2	
	Rabies								
	Coccidioidomycosis							2	
	Monkeypox								
	Zika virus infection							3	
	Severe Fever with Thrombocytopenia Syndrome					1		96	
	Hemorrhagic fever with renal syndrome								
	Western equine encephalitis								
	Tick-borne encephalitis								
	Anthrax								
	Chikungunya fever		1			9		45	
	Scrub typhus(Tsutsugamushi disease)					3	4	24	173
	Dengue fever	4	4	2	4	124	7	433	
	Eastern equine encephalitis								
	Avian influenza (excluding H5N1 and H7N9)								
	Nipah virus infection								
	Japanese spotted fever						6	303	
	Japanese encephalitis							7	
	Hantavirus pulmonary syndrome								
	Herpes B virus infection								
	Glanders								
	Brucellosis					1		2	
	Venezuelan equine encephalitis								
Hendra virus infection									
Epidemic typhus									
Botulism							1		
Malaria	1	2			19	2	53		
Tularemia									
Lyme disease					1		17		
Lyssavirus infection(excluding rabies)									
Rift valley fever									
Melioidosis							2		
Legionellosis	3	5	3	5	174	26	2,148		
Leptospirosis		1			9		28		
Rocky mountain spotted fever									

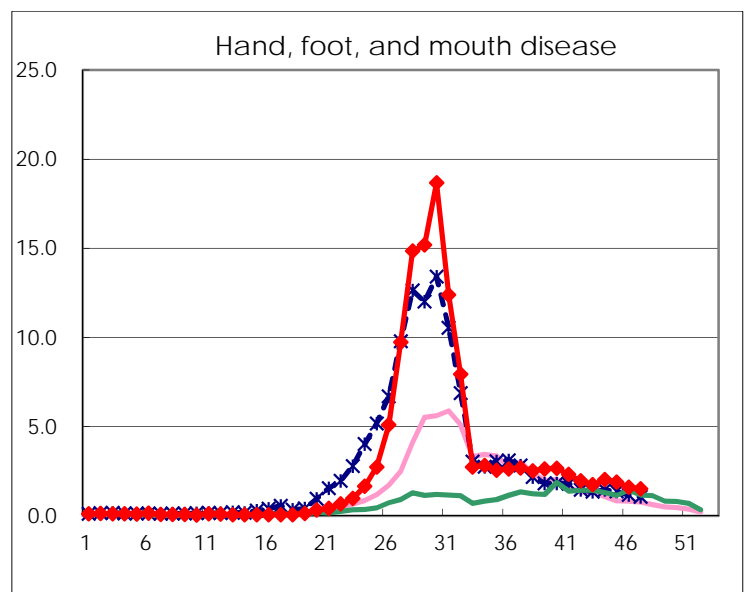
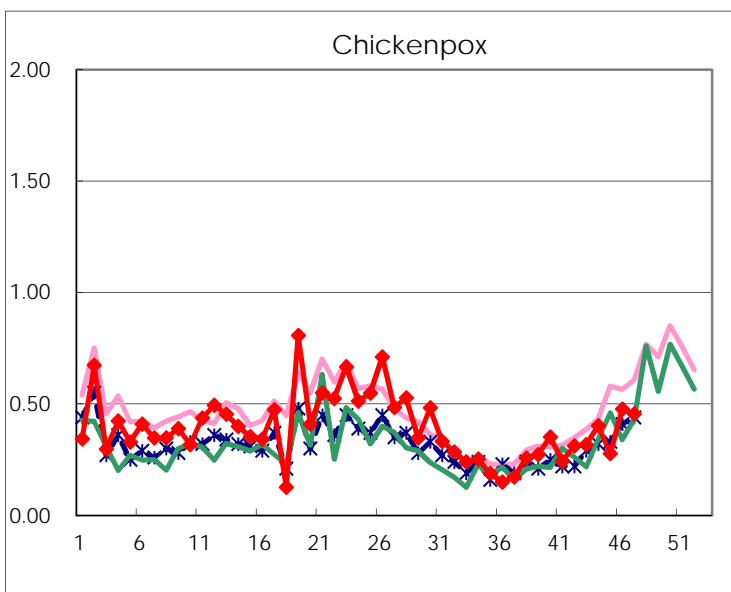
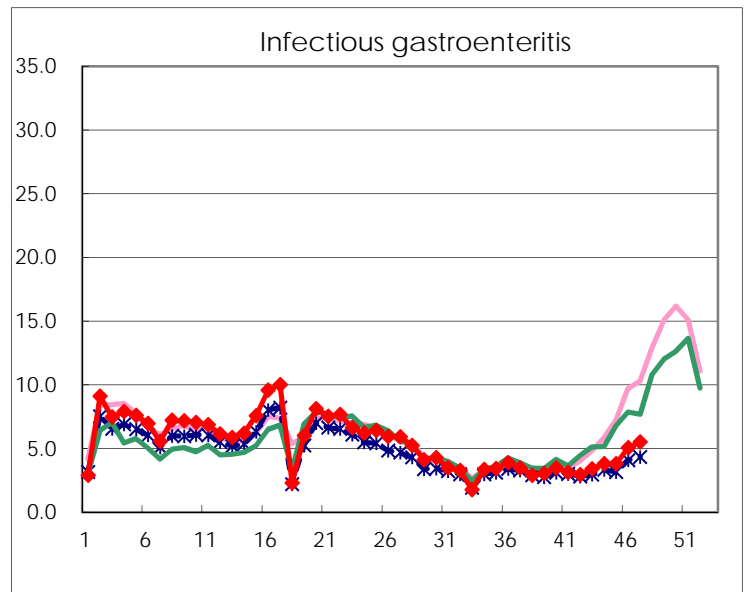
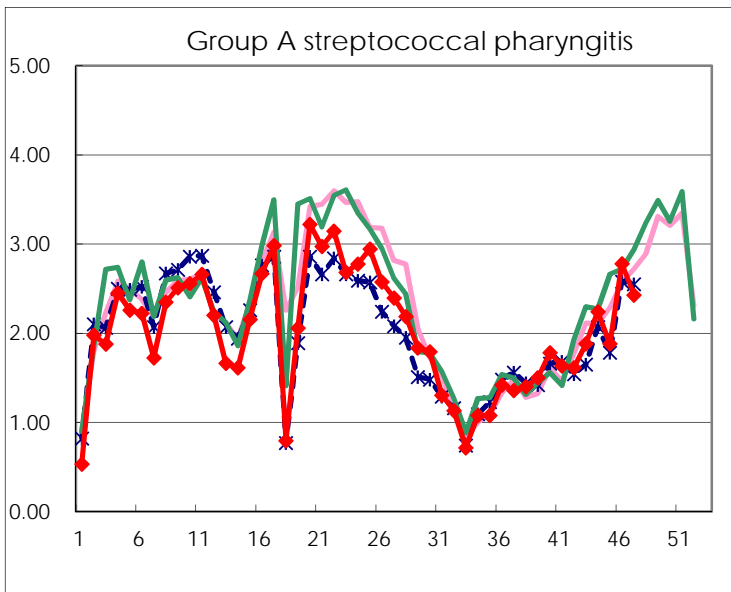
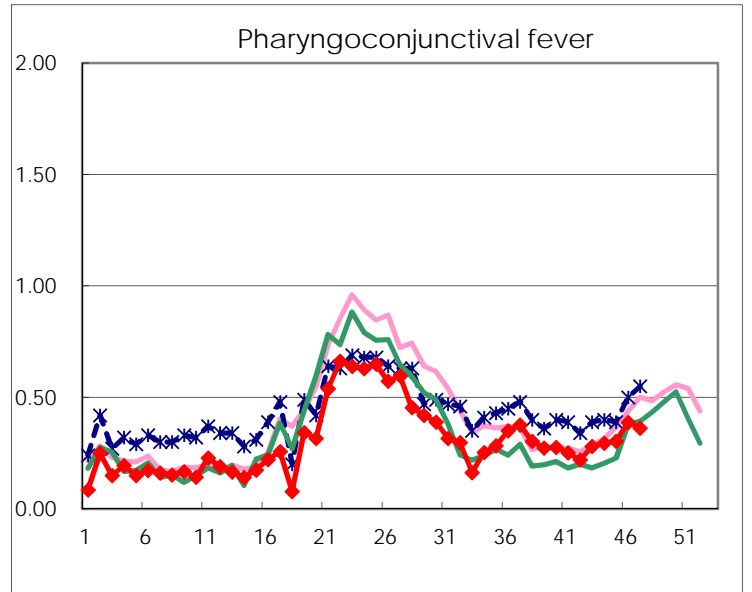
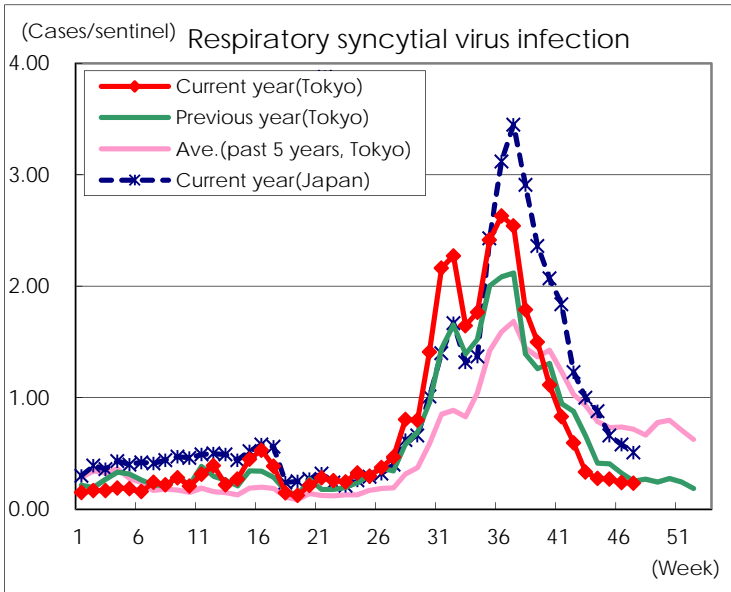
Category	Diseases	Tokyo					Japan	
		44th	45th	46th	47th	Cum 2019	47th	Cum 2019
V	Amebiasis	3	3	2	3	146	7	767
	Viral hepatitis(excluding hepatitis A and E)	4	3	3	1	90	3	301
	CRE infection	10	8	2	6	207	26	2,034
	Acute Flaccid Paralysis (excluding Acute poliomyelitis)					5	4	70
	Acute encephalitis(excluding JE and WNE)	2	1			72	12	771
	Cryptosporidiosis					4		19
	Creutzfeldt-Jakob disease	1				17	4	175
	Severe invasive streptococcal infections(TSLs)	2	3	4		111	8	822
	Acquired immunodeficiency syndrome (AIDS)	4	13	15	8	358	15	1,083
	Giardiasis	1	1			9		45
	Invasive <i>Haemophilus influenzae</i> disease	1	3	3		78	3	486
	Invasive meningococcal disease					4	1	45
	Invasive pneumococcal disease	12	2	7	11	329	56	2,856
	Varicella (limited to hospitalized case)	2	2		2	67	10	429
	Congenital rubella syndrome	1				2		3
	Syphilis	30	27	24	33	1,549	77	5,957
	Disseminated cryptococcosis	1				11	4	138
	Tetanus	1		1		8	1	114
	Vancomycin-resistant <i>S. aureus</i> infection							
	Vancomycin-resistant <i>Enterococcus</i> infection	1		1		8		71
	Pertussis	33	10	23	19	1,258	213	15,523
	Rubella	4	1		1	853	1	2,266
Measles			1		121	5	737	
MDRA infection					2		24	

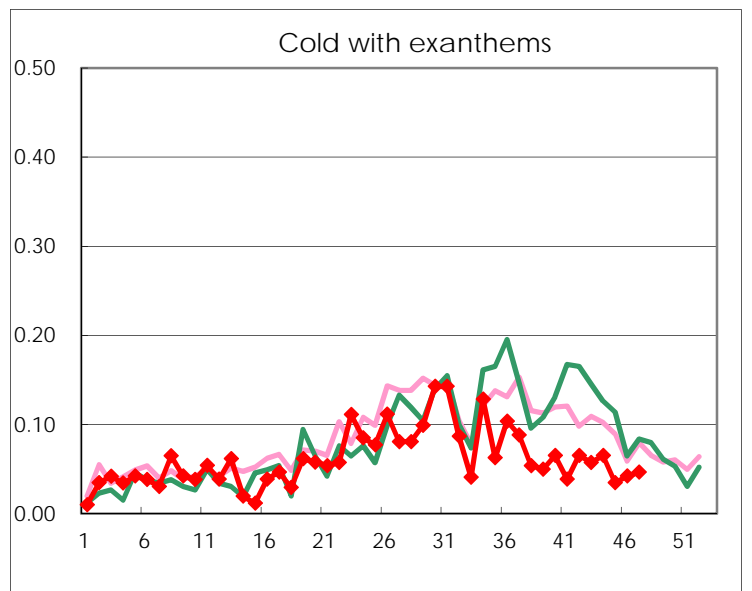
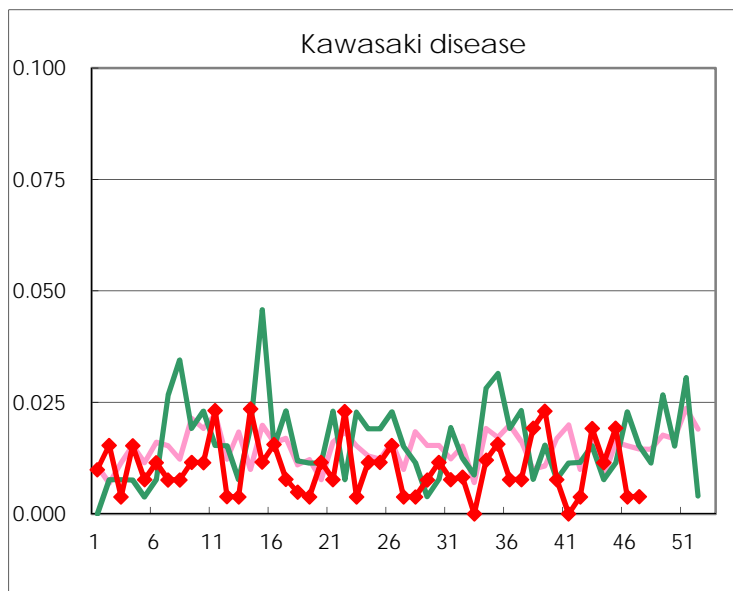
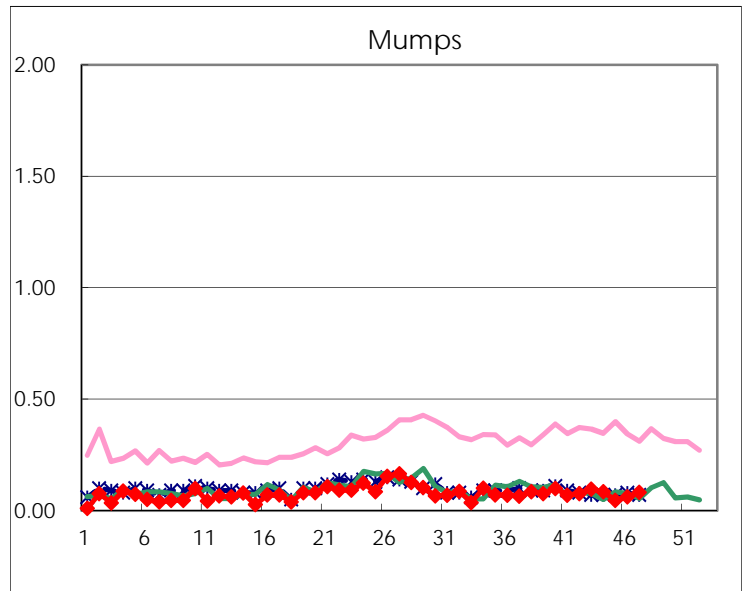
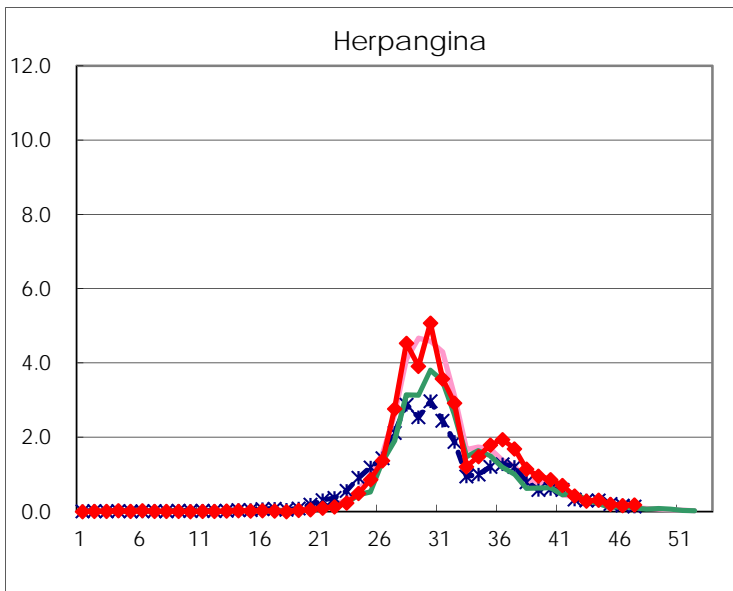
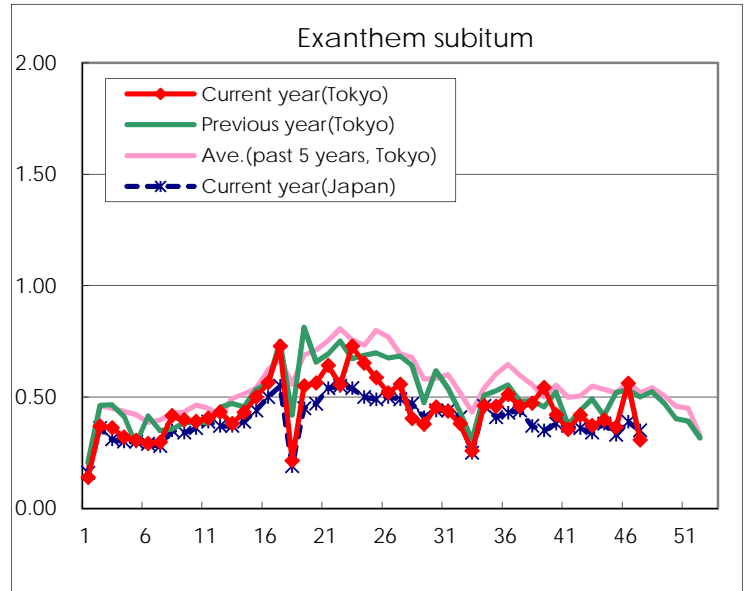
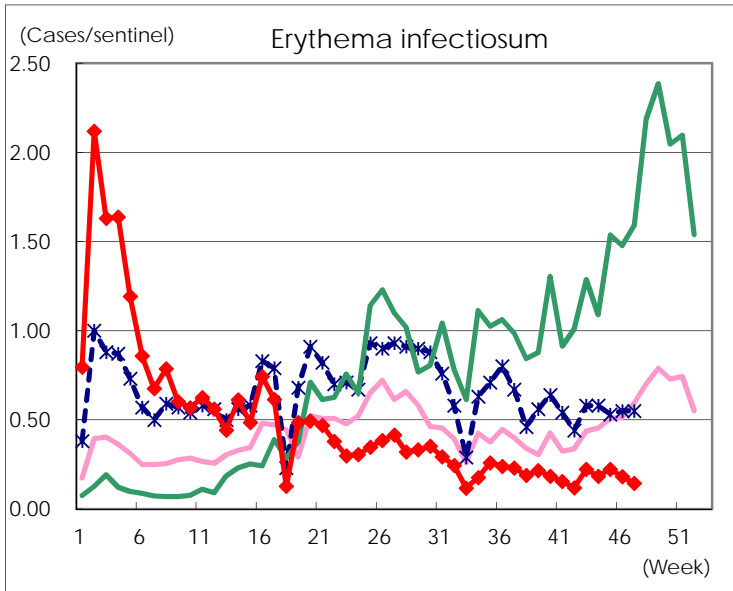
Number of patients with the diseases to be reported
by the designated clinics and hospitals

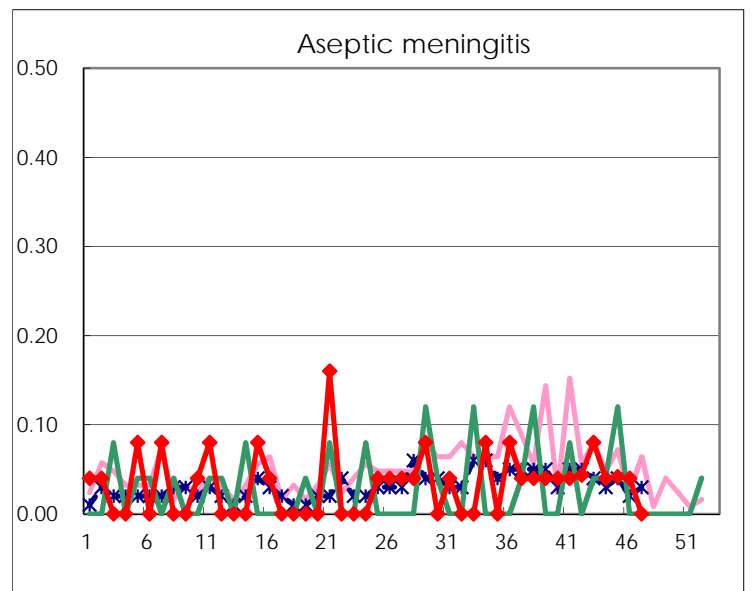
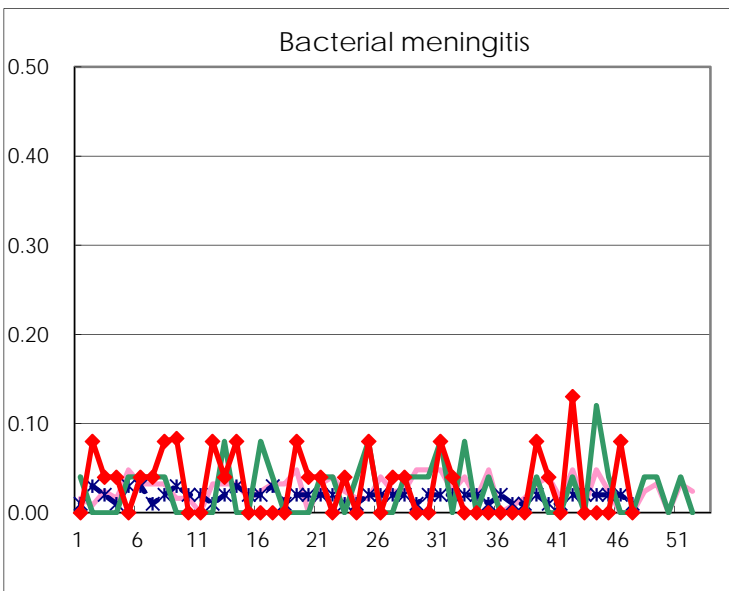
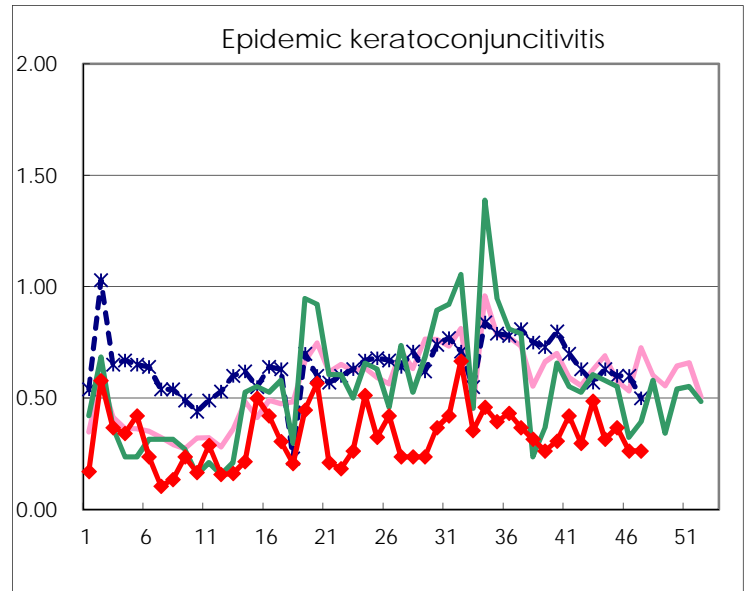
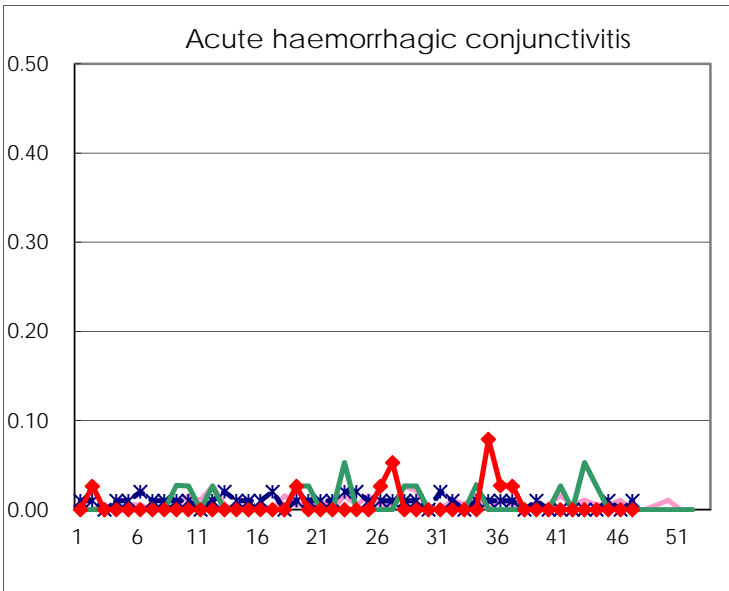
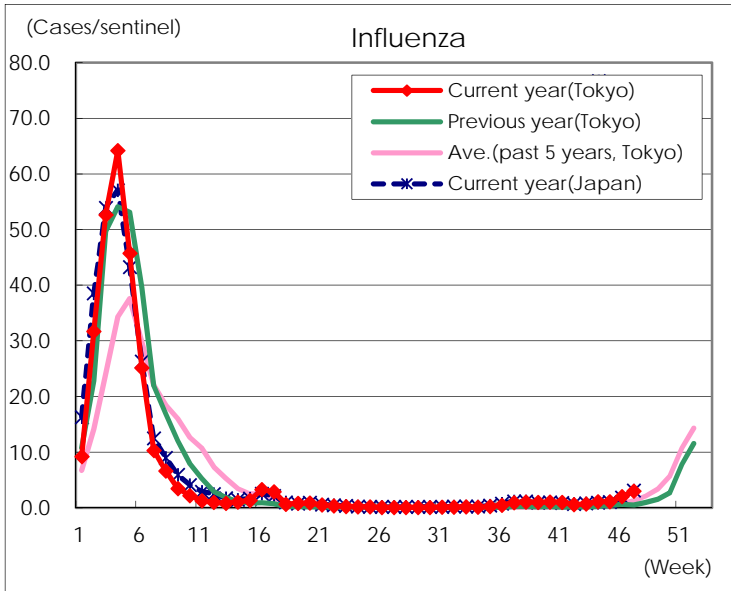
Diseases	Tokyo				
	44th	45th	46th	47th	/sentinel
Respiratory syncytial virus infection	72	70	62	60	0.23
Pharyngoconjunctival fever	77	79	101	93	0.36
Group A streptococcal pharyngitis	585	489	723	624	2.43
Infectious gastroenteritis	990	986	1,312	1,413	5.50
Chickenpox	105	72	124	117	0.46
Hand, foot, and mouth disease	528	491	417	386	1.50
Erythema infectiosum	48	58	47	37	0.14
Exanthem subitum	104	95	146	79	0.31
Herpangina	80	51	43	47	0.18
Mumps	22	12	16	21	0.08
Kawasaki disease	3	5	1	1	
Cold with exanthems	17	9	11	12	0.05
Influenza	461	460	828	1,225	3.00
Acute hemorrhagic conjunctivitis					
Epidemic keratoconjunctivitis	12	14	10	10	0.26
Bacterial meningitis			2		
Aseptic meningitis	1	1	1		
<i>Mycoplasma pneumoniae</i>	14	25	23	23	0.92
Chlamydial pneumonia (excluding psittacosis)	1		2		
Infectious gastroenteritis (only by Rotavirus)				1	0.04
Influenza-Associated Hospitalizations	1	5	2	12	0.48

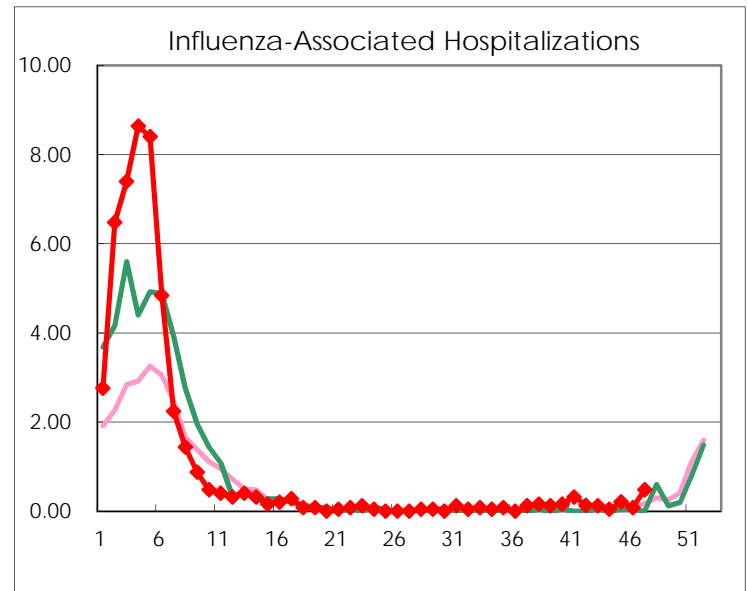
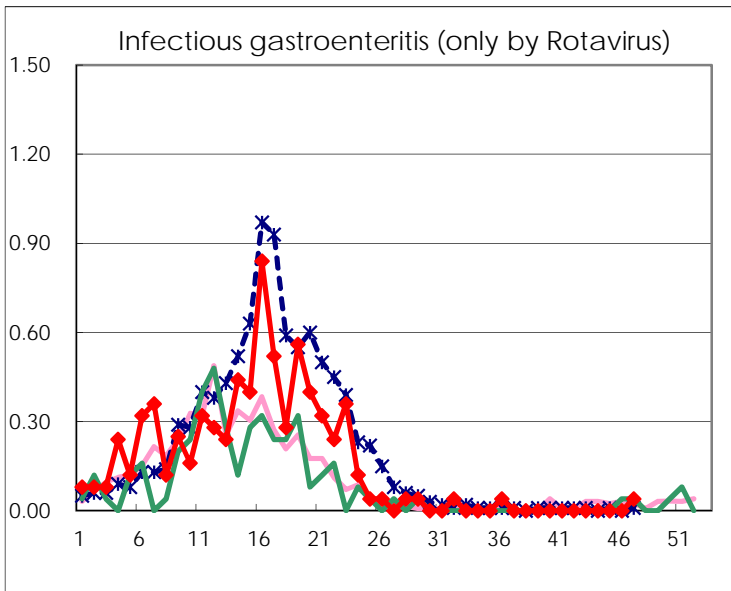
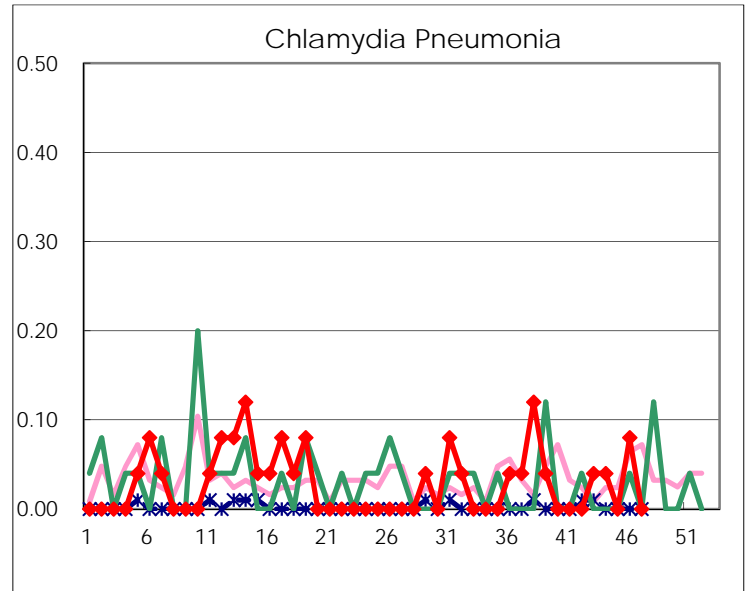
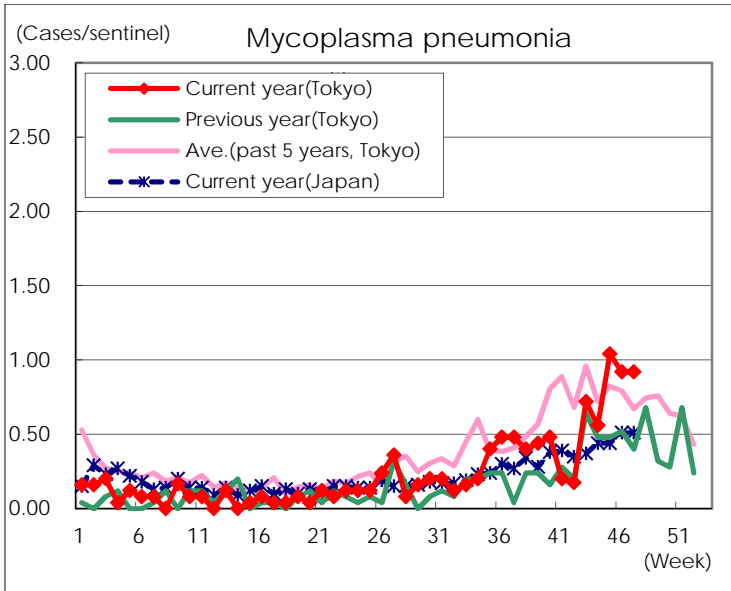
(Blank means 0.)

Disease Trend Graph (weekly reported cases per sentinel in comparison)









Number of sentinel facilities for weekly reporting		
Types of sentinels	Number of sentinels	Sentinels having reported
Pediatric	264	257
Influenza	419	408
Ophthalmic	39	38
Specially-designated	25	25