

5 December 2019 / Number 48

Surveillance System in Tokyo, Japan

The infectious diseases which all physicians must report

All physicians must report to health centers the incidence of the diseases which are shown at page one. Health centers electronically report the individual cases to Tokyo Metropolitan Infectious Disease Surveillance Center.

The infectious diseases required to be reported by the sentinels

The numbers of patients who visit the sentinel clinics or hospitals during a week are reported to health centers in Tokyo. And they electronically report the numbers to Tokyo Metropolitan Infectious Disease Surveillance Center. We have about 500 sentinel clinics and hospitals in Tokyo.

Tokyo Metropolitan Institute of Public Health

TEL:81-3-3363-3213 FAX:81-3-5332-7365

e-mail:www@tokyo-eiken.go.jp

URL:idsc.tokyo-eiken.go.jp/

Number of patients with the diseases which all physicians must report

Category	Diseases	Tokyo					Japan	
		45th	46th	47th	48th	Cum 2019	48th	Cum 2019
I	Ebola hemorrhagic fever							
	Crimean-Congo hemorrhagic fever							
	Smallpox							
	South American hemorrhagic fever							
	Plague							
	Marburg disease							
	Lassa fever							
II	Acute poliomyelitis							
	Tuberculosis	54	69	52	57	2,914	347	19,471
	Diphtheria							
	Severe Acute Respiratory Syndrome(SARS)							
	Middle East Respiratory Syndrome (MERS)							
	Avian influenza H5N1							
	Avian influenza H7N9							
III	Cholera					2		5
	Shigellosis	2	1	3	2	25	4	104
	Enterohemorrhagic Escherichia coli infection	6	2	8	3	374	47	3,597
	Typhoid fever					3	1	35
	Paratyphoid fever	1				4		18
IV	Hepatitis E	2	1	1	3	119	7	450
	West Nile fever							
	Hepatitis A	2	2	5		138	4	409
	Echinococcosis							21
	Yellow fever							
	Psittacosis					3		13
	Omsk hemorrhagic fever							
	Relapsing fever							6
	Kyasanur forest disease							
	Q fever							2
	Rabies							
	Coccidioidomycosis							2
	Monkeypox							
	Zika virus infection							3
	Severe Fever with Thrombocytopenia Syndrome					1	2	98
	Hemorrhagic fever with renal syndrome							
	Western equine encephalitis							
	Tick-borne encephalitis							
	Anthrax							
	Chikungunya fever	1				9	1	46
	Scrub typhus(Tsutsugamushi disease)			3		4	39	215
	Dengue fever	4	2	4	3	127	3	439
	Eastern equine encephalitis							
	Avian influenza (excluding H5N1 and H7N9)							
	Nipah virus infection							
	Japanese spotted fever						5	311
	Japanese encephalitis						1	8
	Hantavirus pulmonary syndrome							
	Herpes B virus infection						1	1
	Glanders							
	Brucellosis					1		2
	Venezuelan equine encephalitis							
	Hendra virus infection							
Epidemic typhus								
Botulism							1	
Malaria	2				19		53	
Tularemia								
Lyme disease					1		17	
Lyssavirus infection(excluding rabies)								
Rift valley fever								
Melioidosis							2	
Legionellosis	5	3	5	2	176	35	2,186	
Leptospirosis	1				9		30	
Rocky mountain spotted fever								

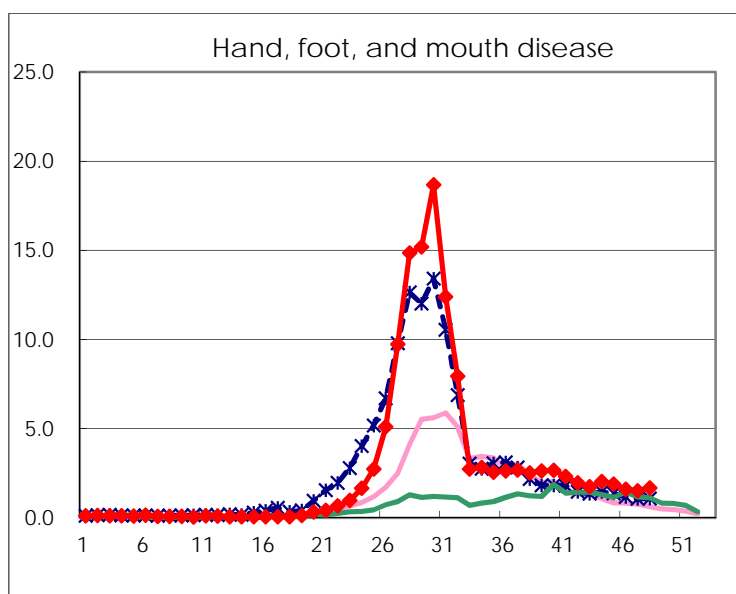
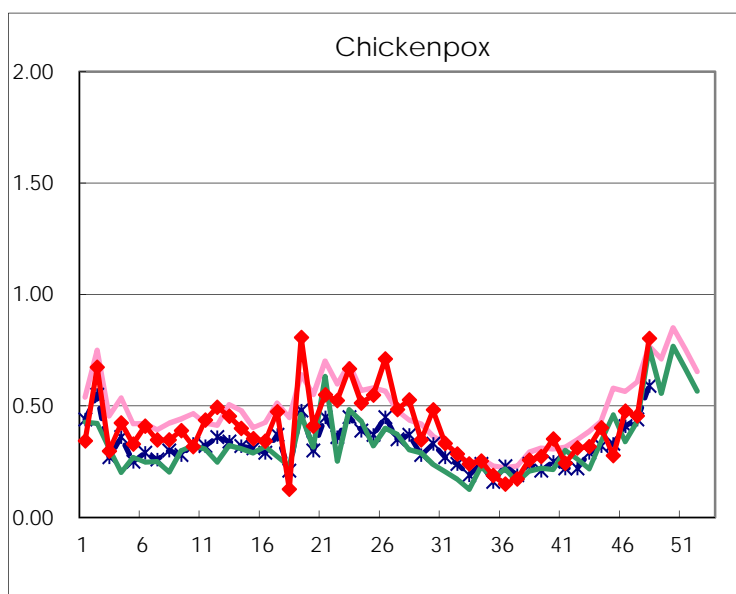
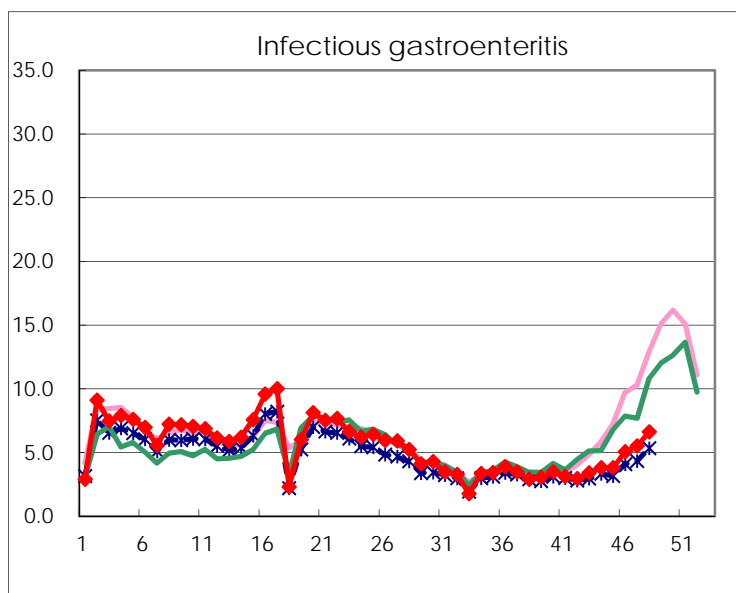
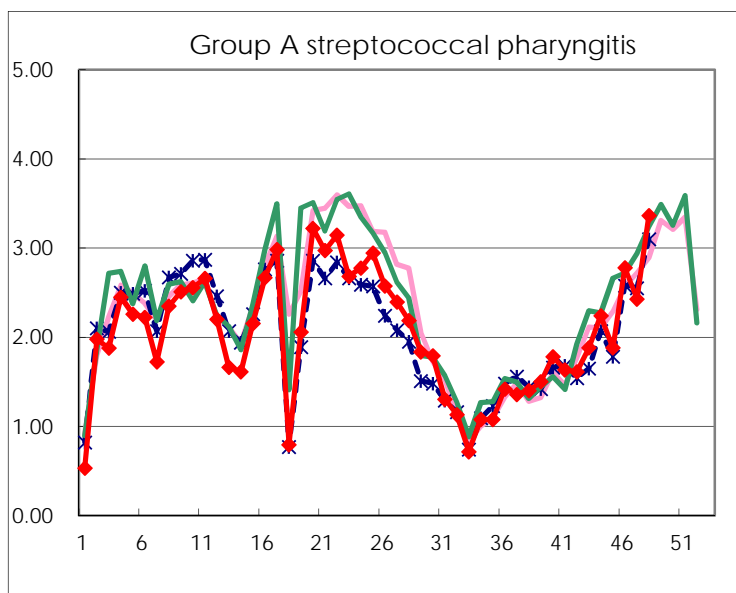
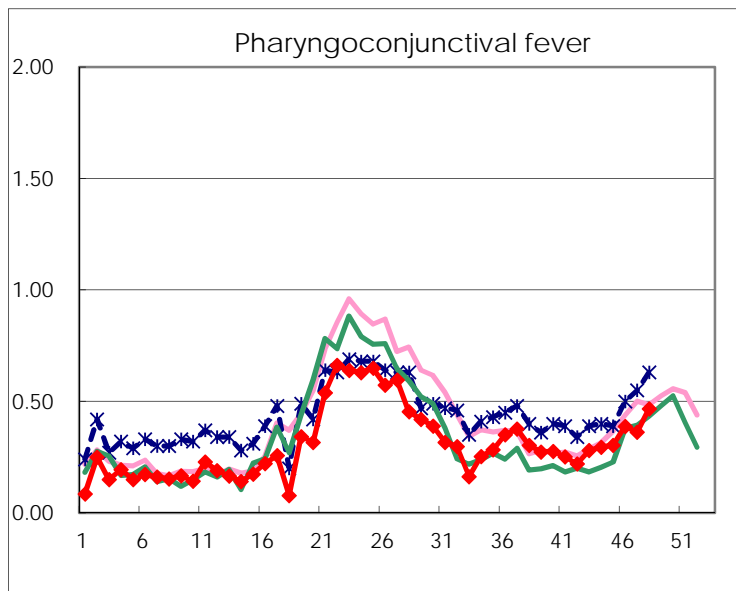
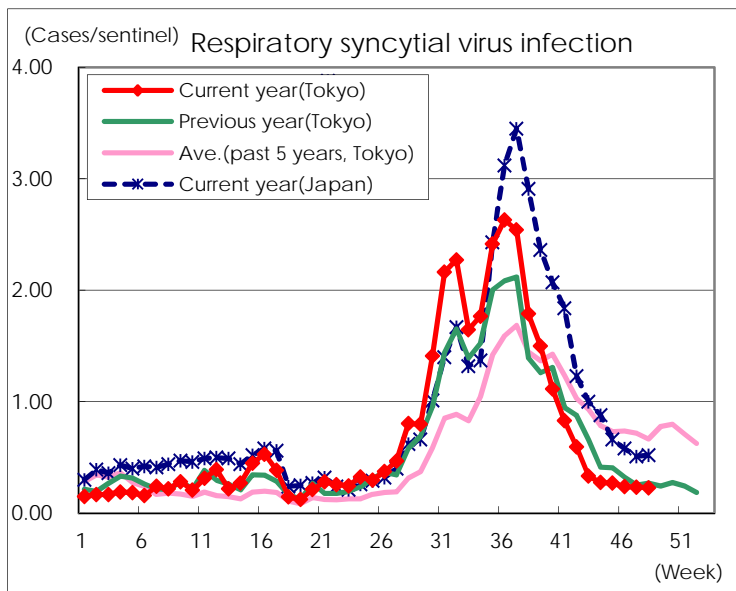
Category	Diseases	Tokyo					Japan	
		45th	46th	47th	48th	Cum 2019	48th	Cum 2019
V	Amebiasis	3	2	3	1	147	9	779
	Viral hepatitis(excluding hepatitis A and E)	3	3	2		91	1	306
	CRE infection	8	2	6	8	215	35	2,088
	Acute Flaccid Paralysis (excluding Acute poliomyelitis)					5	3	74
	Acute encephalitis(excluding JE and WNE)	1			2	74	22	798
	Cryptosporidiosis					4		19
	Creutzfeldt-Jakob disease					17	1	176
	Severe invasive streptococcal infections(TSLS)	3	4		2	113	10	836
	Acquired immunodeficiency syndrome (AIDS)	13	15	8	5	363	11	1,101
	Giardiasis	1				9		45
	Invasive <i>Haemophilus influenzae</i> disease	3	3			78	5	496
	Invasive meningococcal disease					4		45
	Invasive pneumococcal disease	2	7	11	11	340	54	2,942
	Varicella (limited to hospitalized case)	2		3	1	69	10	446
	Congenital rubella syndrome					2		4
	Syphilis	28	24	34	37	1,588	81	6,079
	Disseminated cryptococcosis				1	12	2	141
	Tetanus		1			8	1	115
	Vancomycin-resistant <i>S. aureus</i> infection							
	Vancomycin-resistant <i>Enterococcus</i> infection		1			8	1	72
	Pertussis	10	23	19	23	1,281	223	15,824
Rubella	1		2	2	856	8	2,274	
Measles		1			121	3	736	
MDRA infection					2		24	

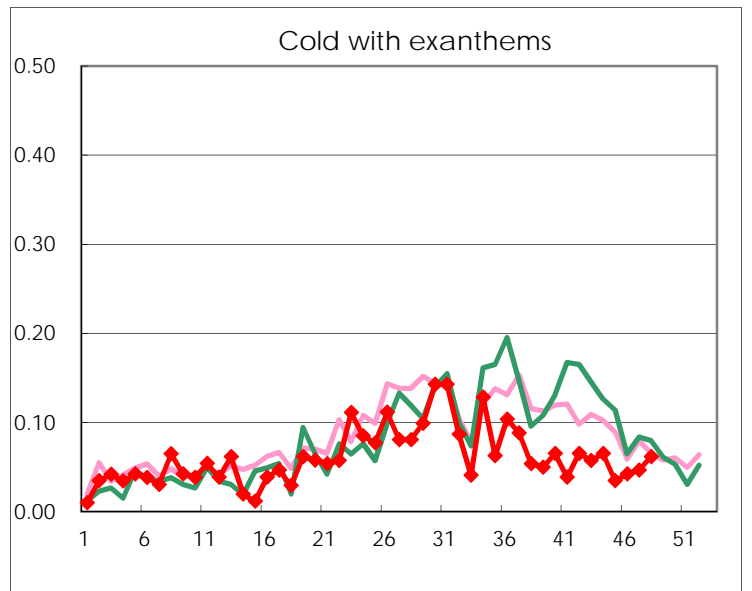
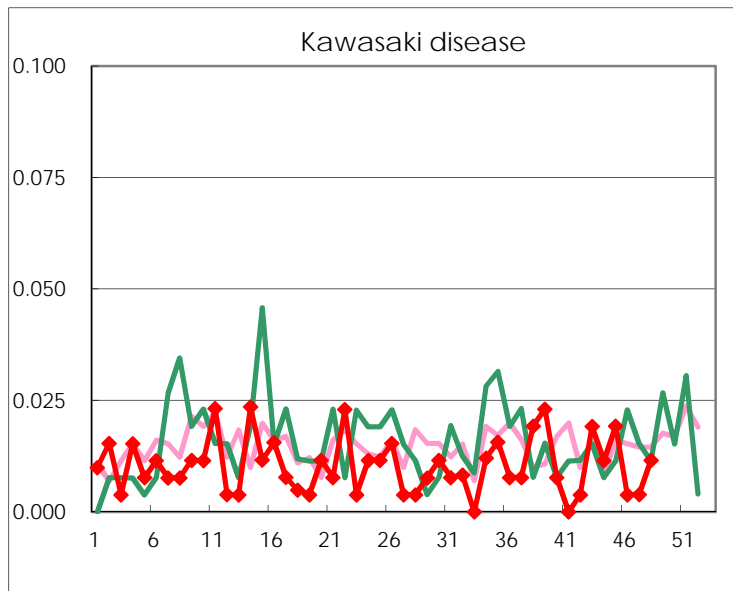
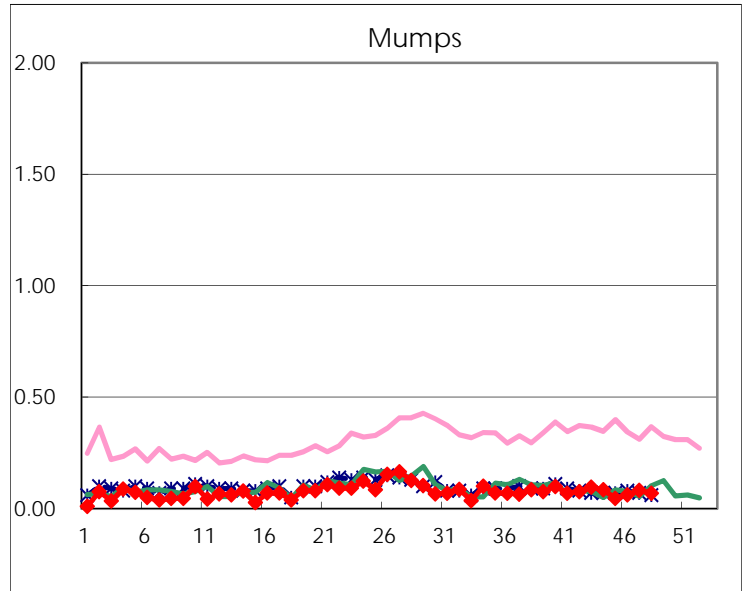
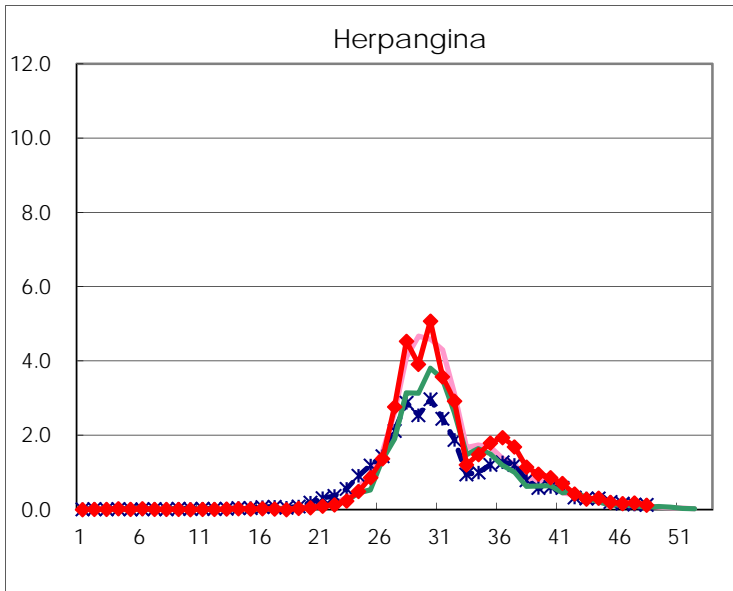
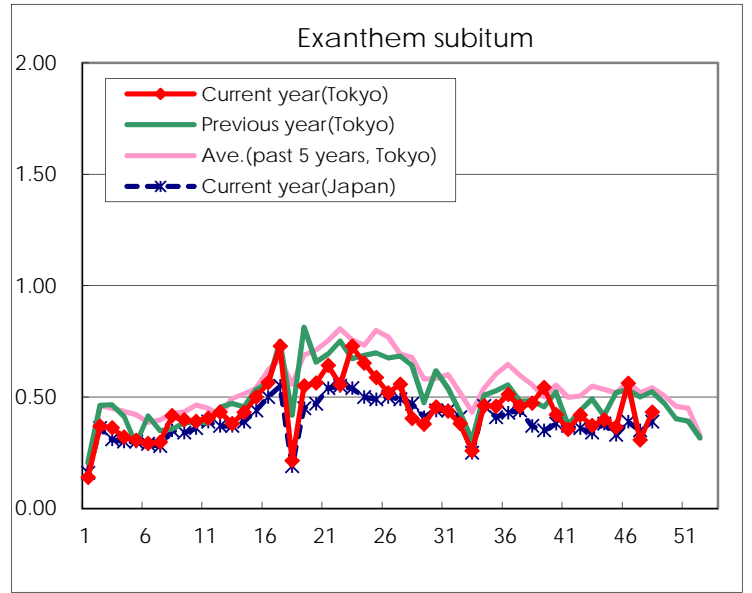
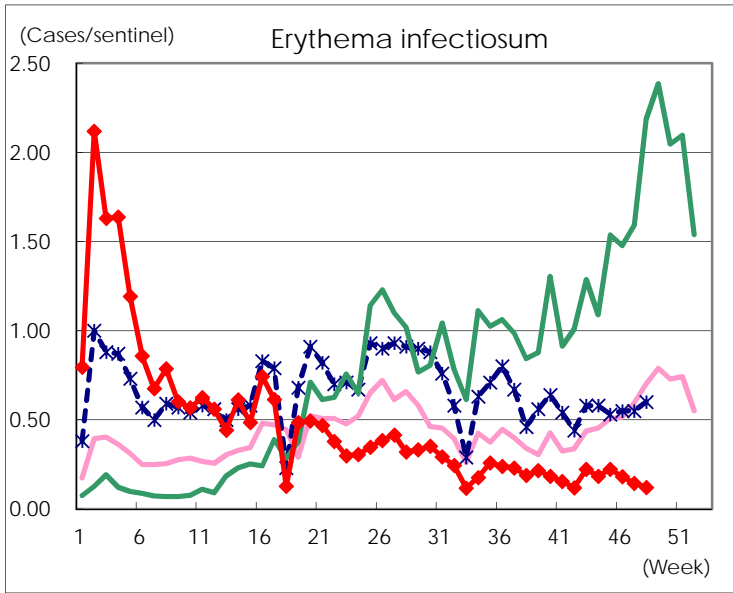
Number of patients with the diseases to be reported
by the designated clinics and hospitals

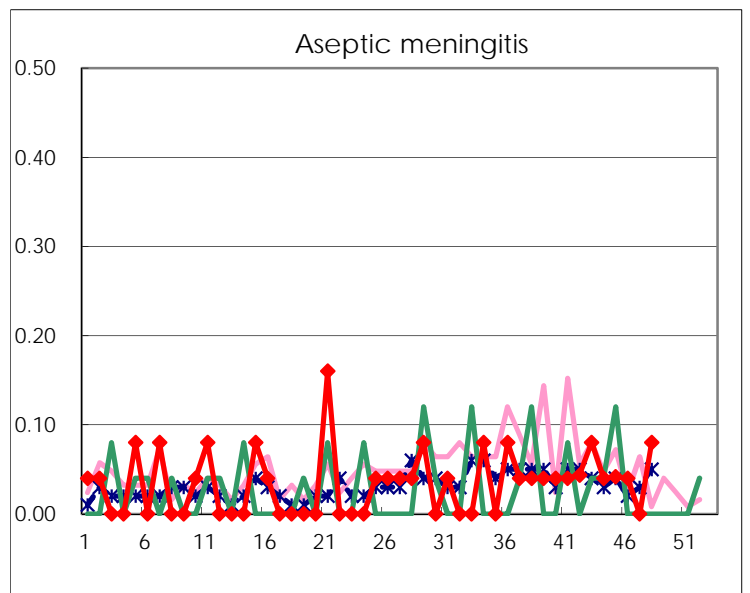
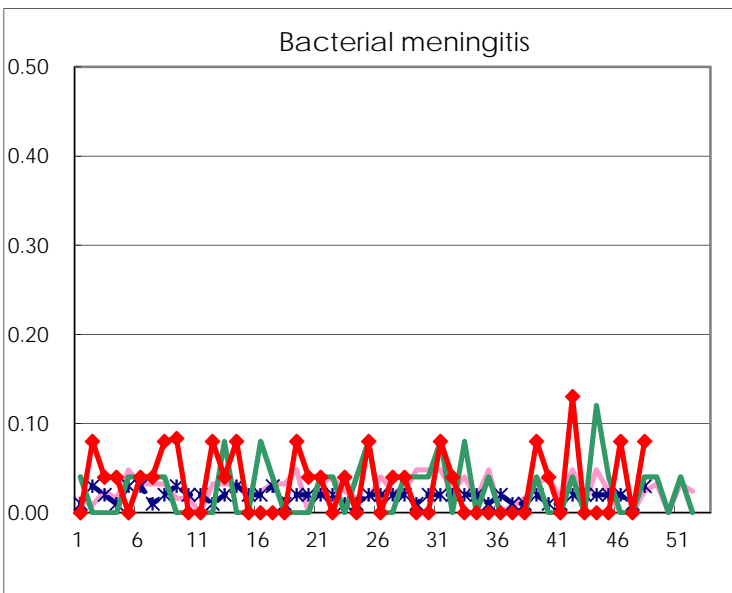
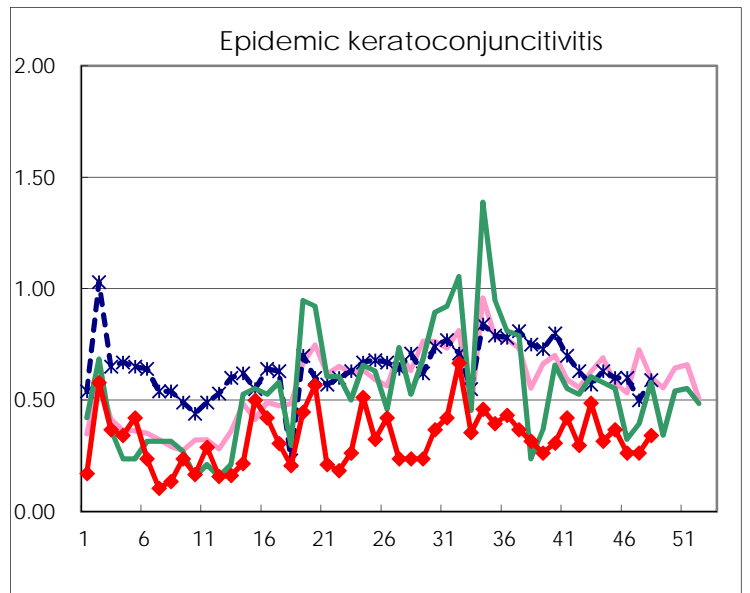
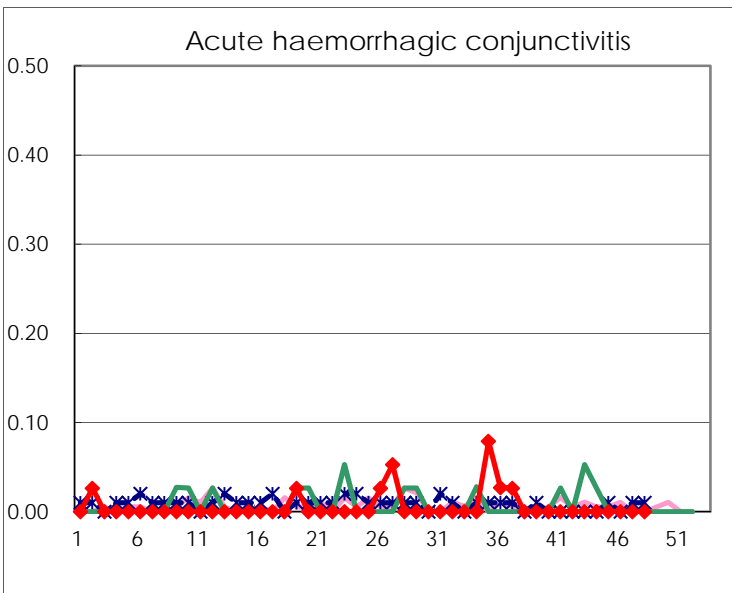
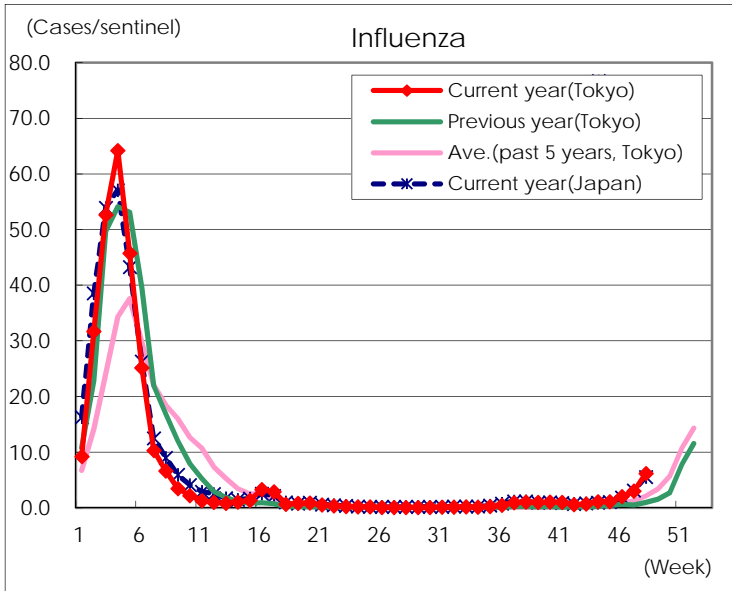
Diseases	Tokyo				
	45th	46th	47th	48th	/sentinel
Respiratory syncytial virus infection	70	62	60	59	0.23
Pharyngoconjunctival fever	79	101	93	121	0.47
Group A streptococcal pharyngitis	489	723	624	871	3.36
Infectious gastroenteritis	986	1,312	1,413	1,711	6.61
Chickenpox	72	124	117	208	0.80
Hand, foot, and mouth disease	491	417	386	434	1.68
Erythema infectiosum	58	47	37	31	0.12
Exanthem subitum	95	146	79	112	0.43
Herpangina	51	43	47	32	0.12
Mumps	12	16	21	18	0.07
Kawasaki disease	5	1	1	3	0.01
Cold with exanthems	9	11	12	16	0.06
Influenza	460	828	1,229	2,547	6.17
Acute hemorrhagic conjunctivitis					
Epidemic keratoconjunctivitis	14	10	10	13	0.34
Bacterial meningitis		2		2	0.08
Aseptic meningitis	1	1		2	0.08
<i>Mycoplasma pneumoniae</i>	25	23	23	13	0.52
Chlamydial pneumonia (excluding psittacosis)		2		1	0.04
Infectious gastroenteritis (only by Rotavirus)			1	2	0.08
Influenza-Associated Hospitalizations	5	2	12	20	0.80

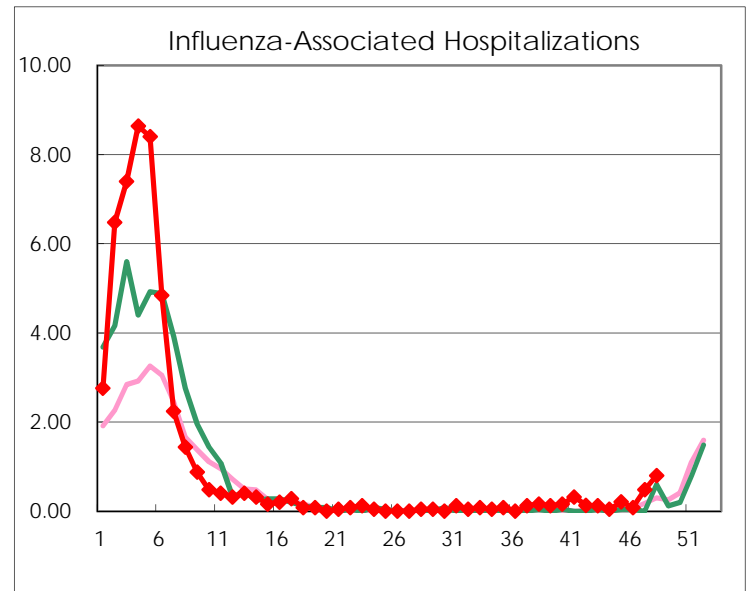
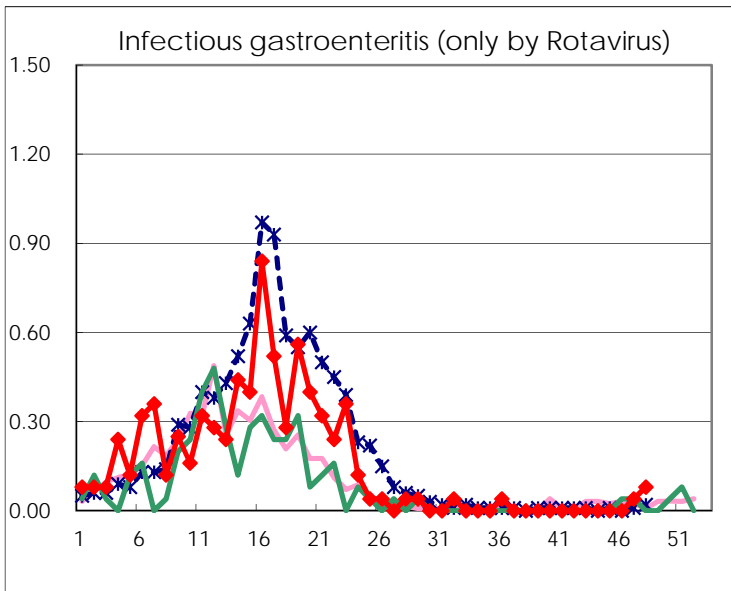
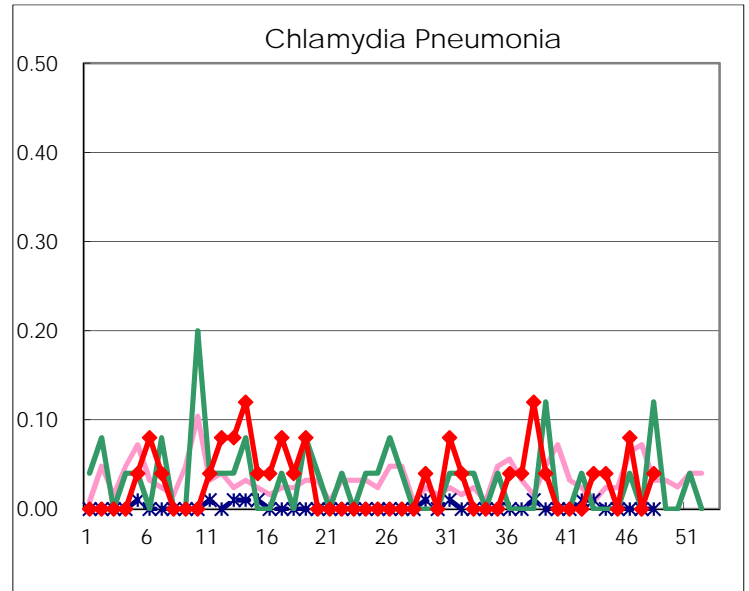
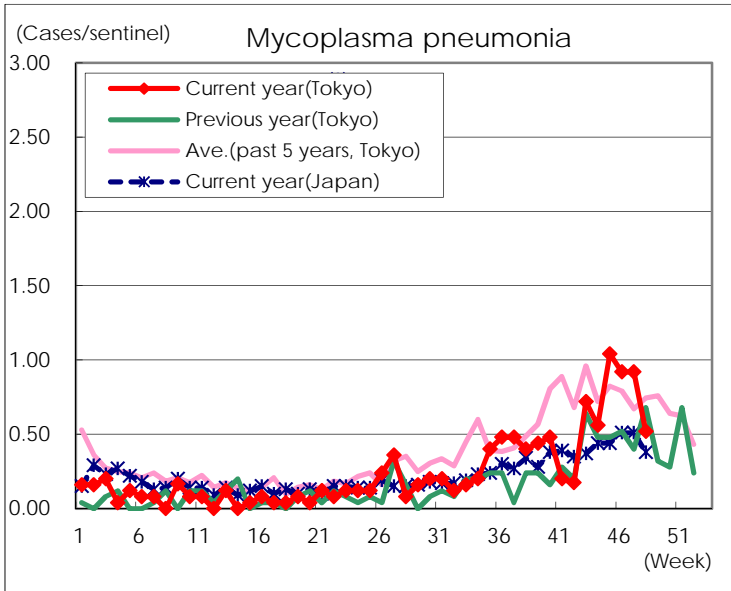
(Blank means 0.)

Disease Trend Graph (weekly reported cases per sentinel in comparison)









Number of sentinel facilities for weekly reporting		
Types of sentinels	Number of sentinels	Sentinels having reported
Pediatric	264	259
Influenza	419	413
Ophthalmic	39	38
Specially-designated	25	25