

**12 December 2019 / Number 49**

## Surveillance System in Tokyo, Japan

The infectious diseases which all physicians must report

All physicians must report to health centers the incidence of the diseases which are shown at page one. Health centers electronically report the individual cases to Tokyo Metropolitan Infectious Disease Surveillance Center.

The infectious diseases required to be reported by the sentinels

The numbers of patients who visit the sentinel clinics or hospitals during a week are reported to health centers in Tokyo. And they electronically report the numbers to Tokyo Metropolitan Infectious Disease Surveillance Center. We have about 500 sentinel clinics and hospitals in Tokyo.

Tokyo Metropolitan Institute of Public Health

TEL:81-3-3363-3213 FAX:81-3-5332-7365

e-mail:[www@tokyo-eiken.go.jp](mailto:www@tokyo-eiken.go.jp)

URL:[idsc.tokyo-eiken.go.jp/](http://idsc.tokyo-eiken.go.jp/)

---

Number of patients with the diseases which all physicians must report

Category	Diseases	Tokyo					Japan	
		46th	47th	48th	49th	Cum 2019	49th	Cum 2019
I	Ebola hemorrhagic fever							
	Crimean-Congo hemorrhagic fever							
	Smallpox							
	South American hemorrhagic fever							
	Plague							
	Marburg disease							
	Lassa fever							
II	Acute poliomyelitis							
	Tuberculosis	69	55	59	58	2,976	317	19,909
	Diphtheria							
	Severe Acute Respiratory Syndrome(SARS)							
	Middle East Respiratory Syndrome (MERS)							
	Avian influenza H5N1							
	Avian influenza H7N9							
III	Cholera					2		5
	Shigellosis	1	3	2	1	26	14	118
	Enterohemorrhagic Escherichia coli infection	2	8	3	3	377	48	3,651
	Typhoid fever					3		35
	Paratyphoid fever					4		18
IV	Hepatitis E	1	1	3	2	121	7	457
	West Nile fever							
	Hepatitis A	2	5		2	140	5	416
	Echinococcosis							22
	Yellow fever							
	Psittacosis					3		13
	Omsk hemorrhagic fever							
	Relapsing fever						1	7
	Kyasanur forest disease							
	Q fever							2
	Rabies							
	Coccidioidomycosis							2
	Monkeypox							
	Zika virus infection							3
	Severe Fever with Thrombocytopenia Syndrome					1	2	100
	Hemorrhagic fever with renal syndrome							
	Western equine encephalitis							
	Tick-borne encephalitis							
	Anthrax							
	Chikungunya fever					9		46
	Scrub typhus(Tsutsugamushi disease)		3		1	5	45	266
	Dengue fever	2	4	3	1	128	5	446
	Eastern equine encephalitis							
	Avian influenza (excluding H5N1 and H7N9)							
	Nipah virus infection							
	Japanese spotted fever							312
	Japanese encephalitis							8
	Hantavirus pulmonary syndrome							
	Herpes B virus infection							1
	Glanders							
	Brucellosis					1		2
	Venezuelan equine encephalitis							
	Hendra virus infection							
	Epidemic typhus							
Botulism						2	3	
Malaria			1		20	1	55	
Tularemia								
Lyme disease					1		17	
Lyssavirus infection(excluding rabies)								
Rift valley fever								
Melioidosis							2	
Legionellosis	3	5	2	3	179	35	2,223	
Leptospirosis					9		30	
Rocky mountain spotted fever								

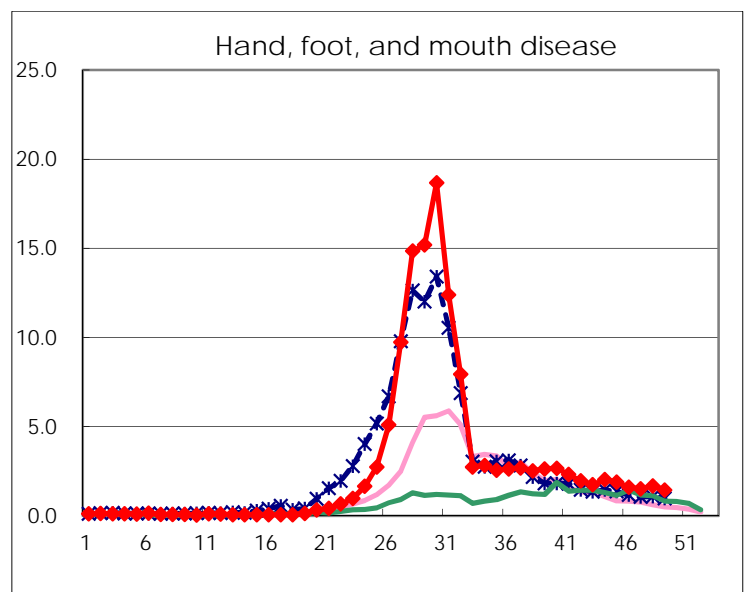
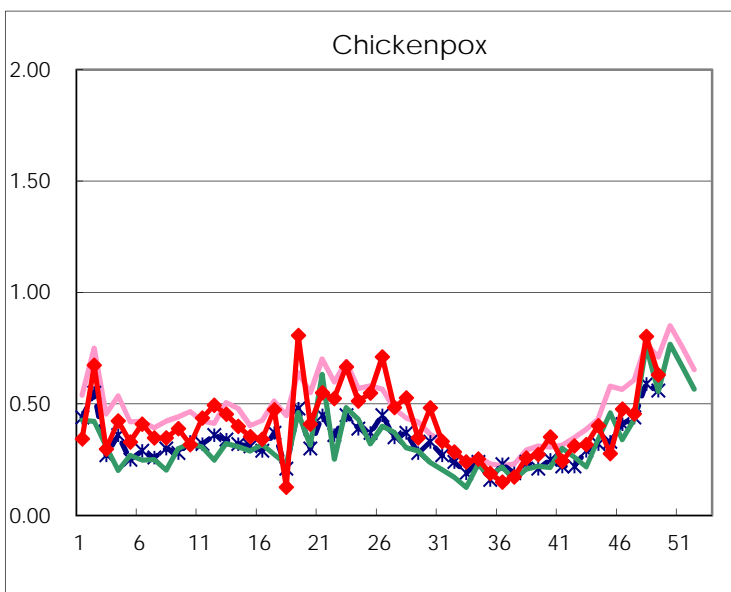
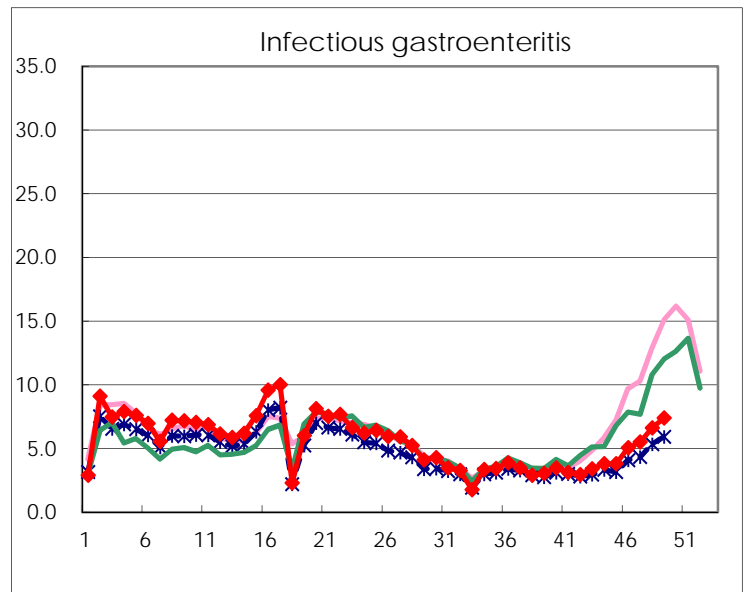
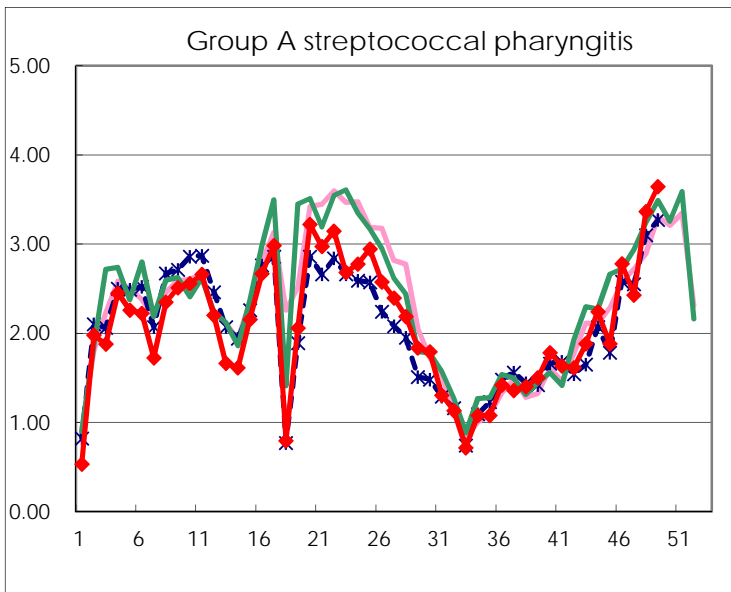
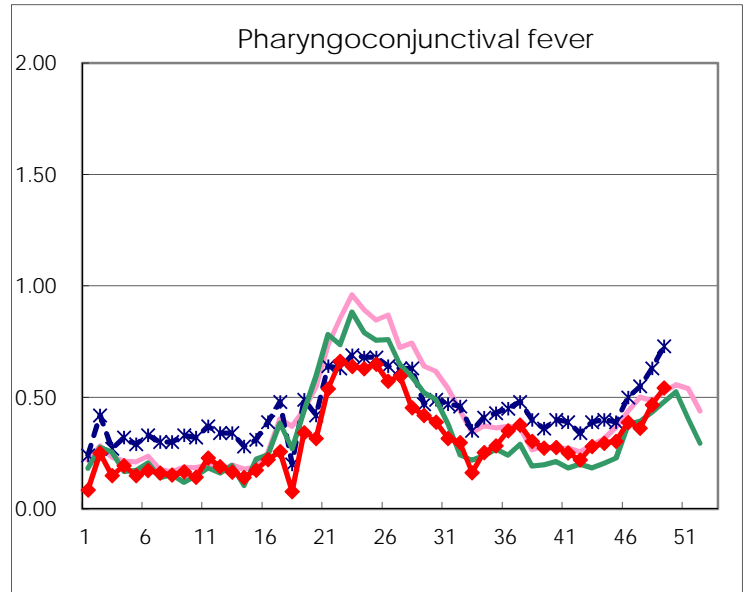
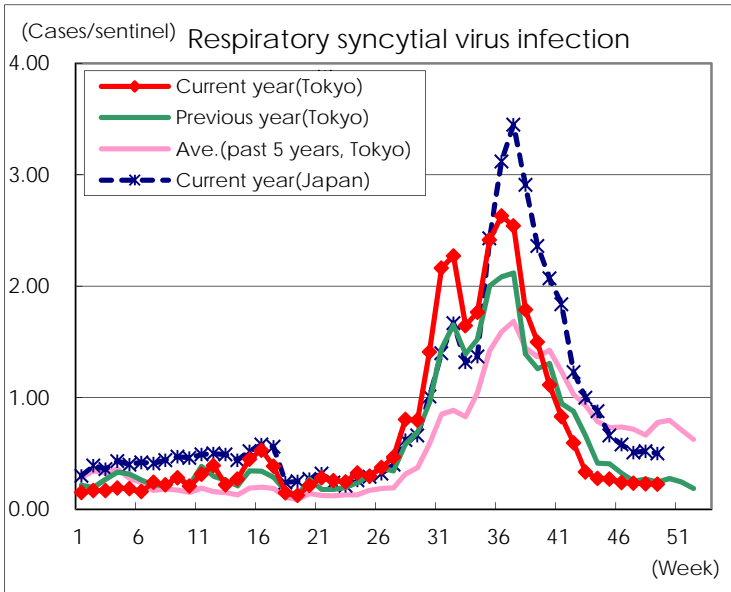
Category	Diseases	Tokyo					Japan	
		46th	47th	48th	49th	Cum 2019	49th	Cum 2019
V	Amebiasis	2	3	1	2	149	11	795
	Viral hepatitis(excluding hepatitis A and E)	3	2		3	94	2	312
	CRE infection	2	6	9	4	220	27	2,138
	Acute Flaccid Paralysis (excluding Acute poliomyelitis)					5		75
	Acute encephalitis(excluding JE and WNE)			2	3	77	15	829
	Cryptosporidiosis					4		19
	Creutzfeldt-Jakob disease					17	1	178
	Severe invasive streptococcal infections(TSLs)	4		2	3	116	13	864
	Acquired immunodeficiency syndrome (AIDS)	15	8	5	9	372	17	1,137
	Giardiasis				1	10		46
	Invasive <i>Haemophilus influenzae</i> disease	3				78	9	508
	Invasive meningococcal disease					4		45
	Invasive pneumococcal disease	7	12	11	8	349	63	3,033
	Varicella (limited to hospitalized case)		3	1	1	70	5	455
	Congenital rubella syndrome					2		4
	Syphilis	24	36	38	38	1,629	72	6,214
	Disseminated cryptococcosis			1		12	5	147
	Tetanus	1				8	1	116
	Vancomycin-resistant <i>S. aureus</i> infection							
	Vancomycin-resistant <i>Enterococcus</i> infection	1				8	1	73
	Pertussis	23	19	23	17	1,298	199	16,099
Rubella		2	2	2	858	7	2,281	
Measles	1			2	123	3	740	
MDRA infection					2		24	

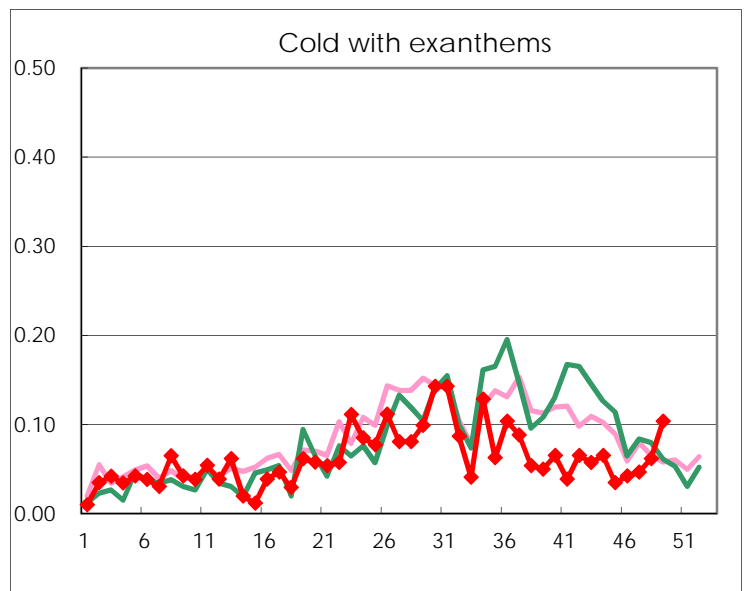
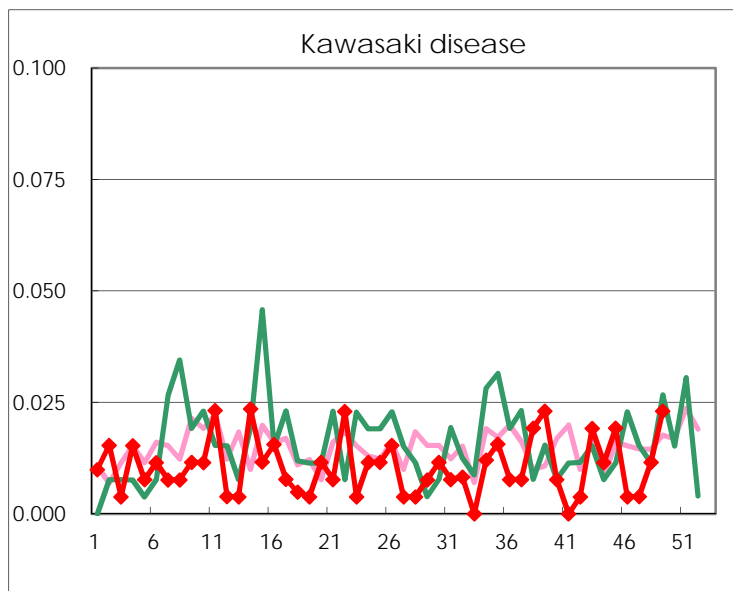
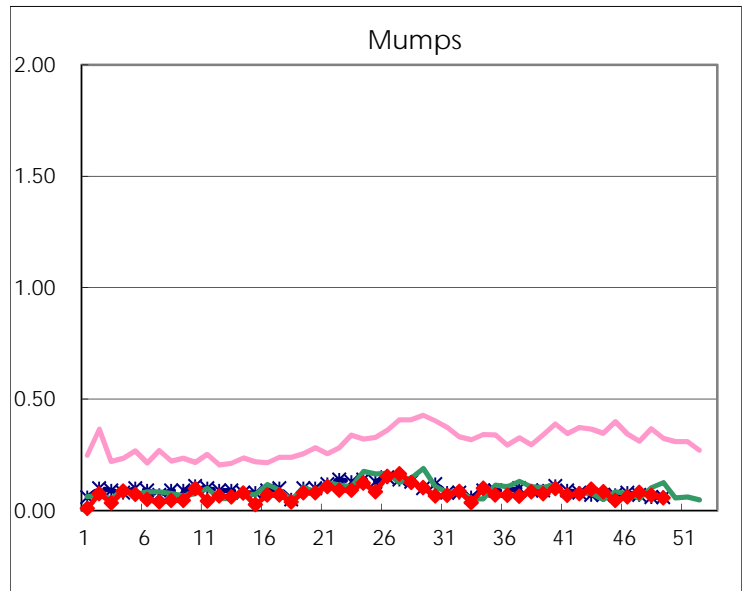
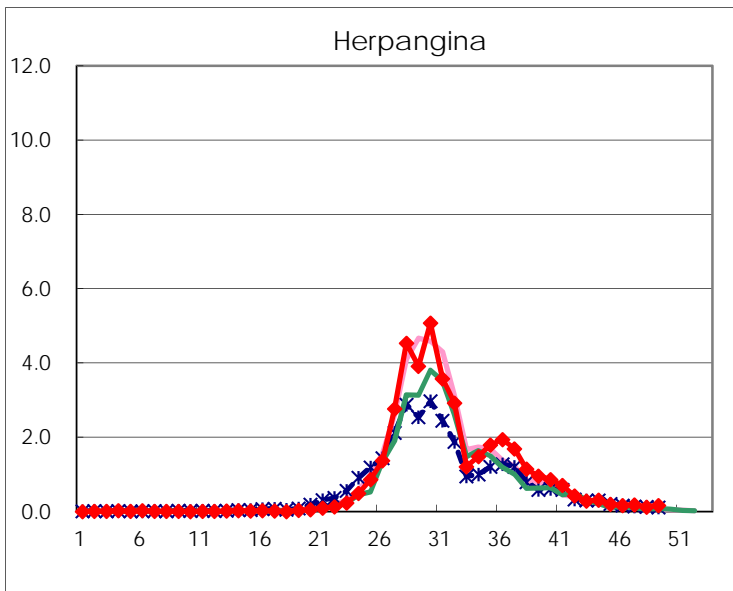
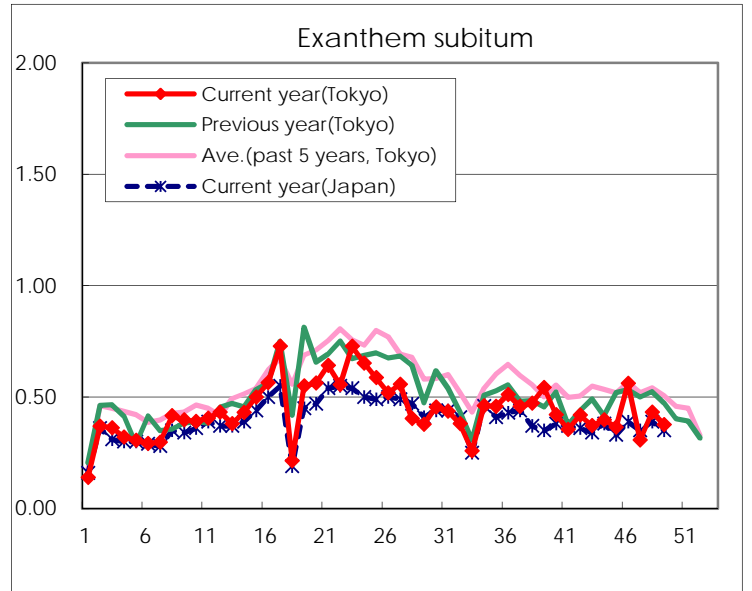
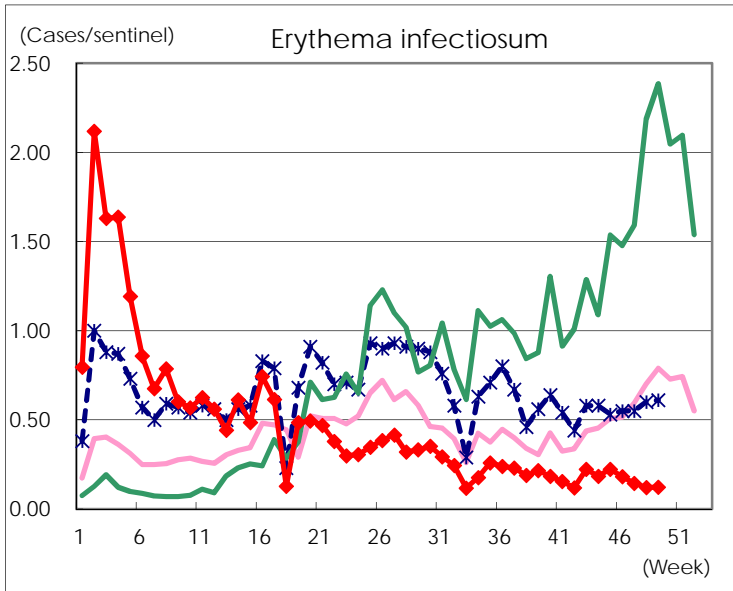
Number of patients with the diseases to be reported  
by the designated clinics and hospitals

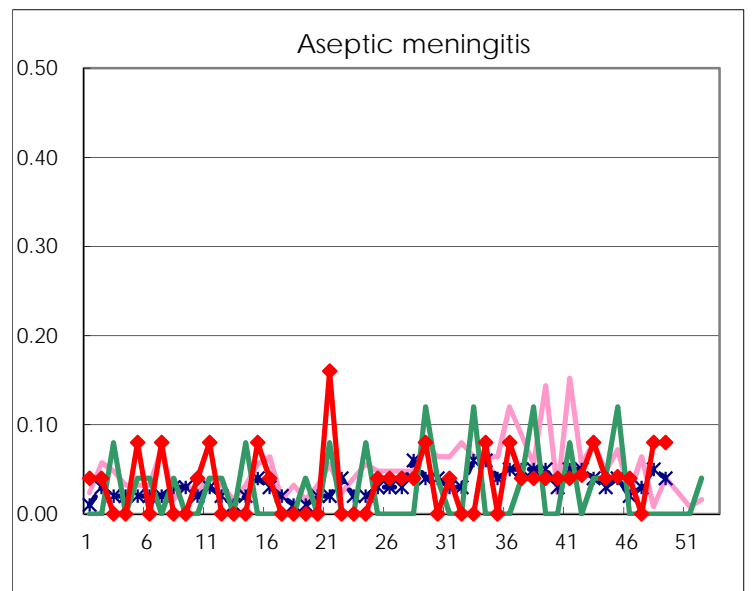
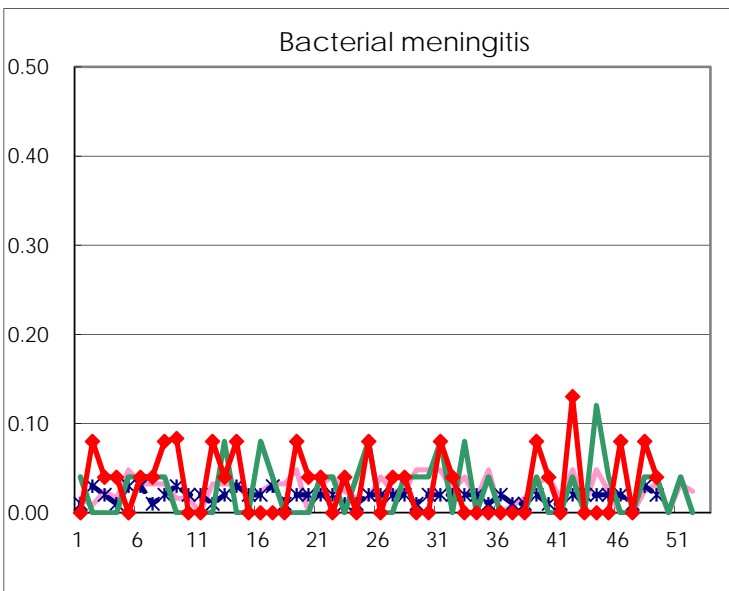
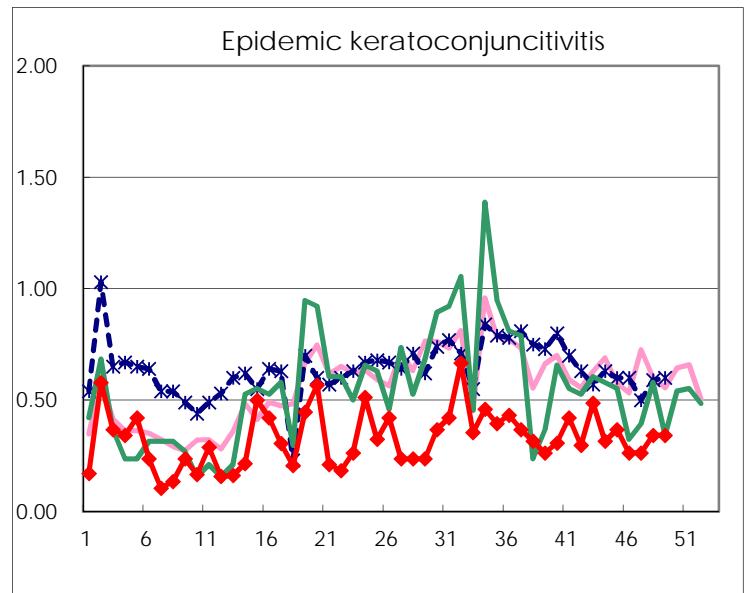
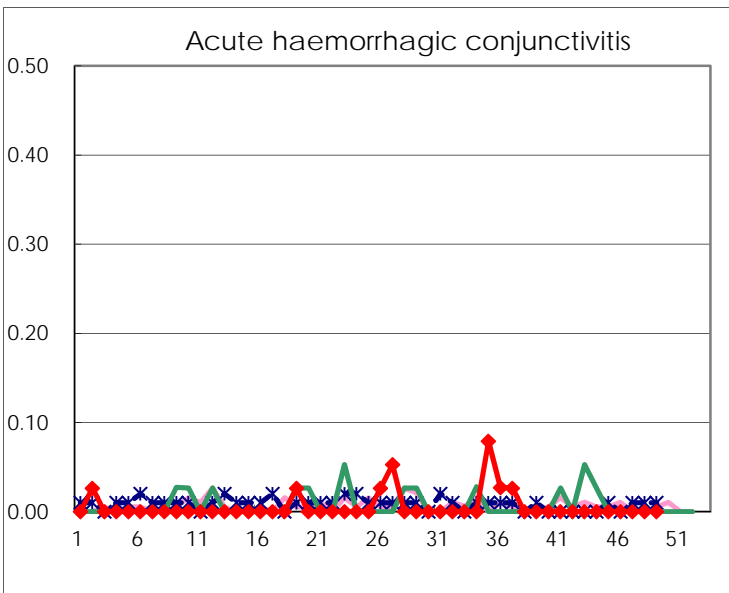
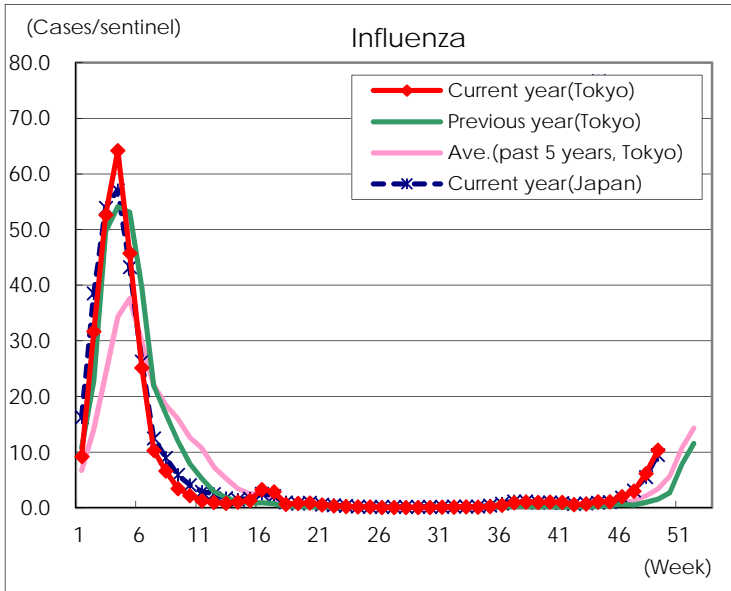
Diseases	Tokyo				
	46th	47th	48th	49th	/sentinel
Respiratory syncytial virus infection	62	60	59	58	0.22
Pharyngoconjunctival fever	101	93	121	141	0.54
Group A streptococcal pharyngitis	723	624	871	948	3.65
Infectious gastroenteritis	1,312	1,413	1,711	1,922	7.39
Chickenpox	124	117	208	164	0.63
Hand, foot, and mouth disease	417	386	434	374	1.44
Erythema infectiosum	47	37	31	32	0.12
Exanthem subitum	146	79	112	98	0.38
Herpangina	43	47	32	43	0.17
Mumps	16	21	18	15	0.06
Kawasaki disease	1	1	3	6	0.02
Cold with exanthems	11	12	16	27	0.10
Influenza	828	1,229	2,547	4,288	10.36
Acute hemorrhagic conjunctivitis					
Epidemic keratoconjunctivitis	10	10	13	13	0.34
Bacterial meningitis	2		2	1	0.04
Aseptic meningitis	1		2	2	0.08
<i>Mycoplasma pneumoniae</i>	23	23	13	17	0.68
Chlamydial pneumonia (excluding psittacosis)	2		1	1	0.04
Infectious gastroenteritis (only by Rotavirus)		1	2		
Influenza-Associated Hospitalizations	2	12	20	21	0.84

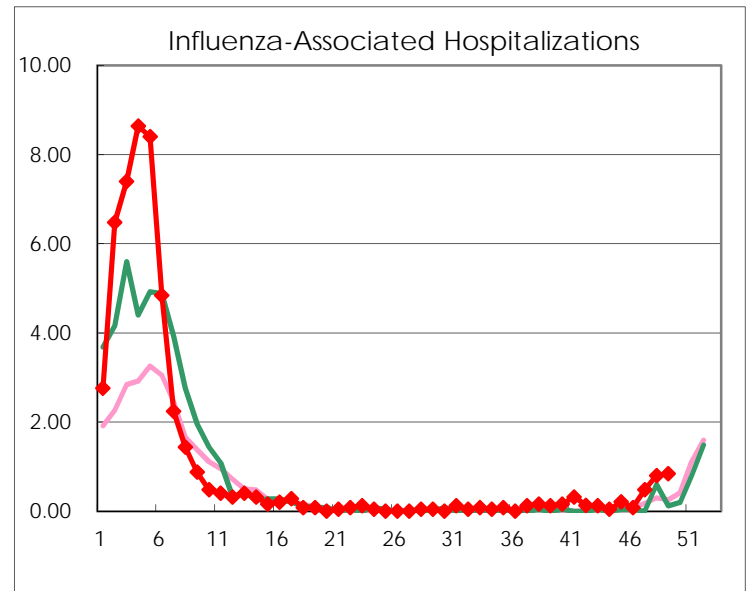
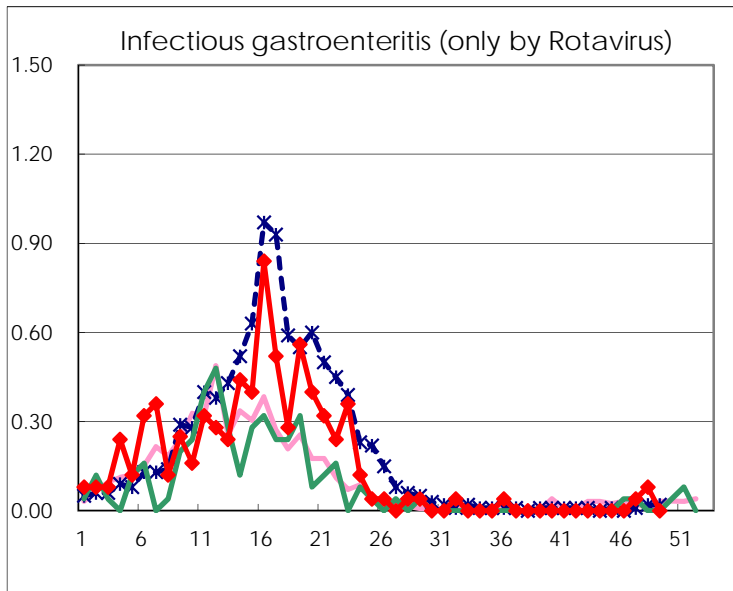
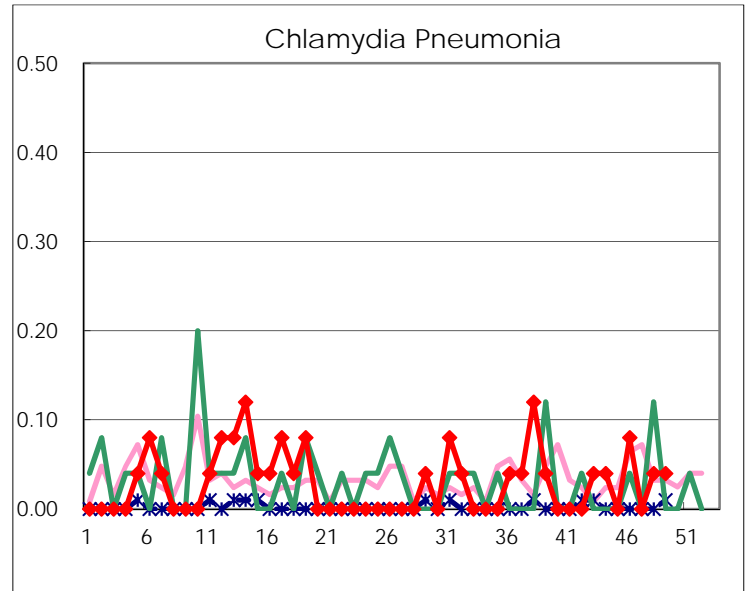
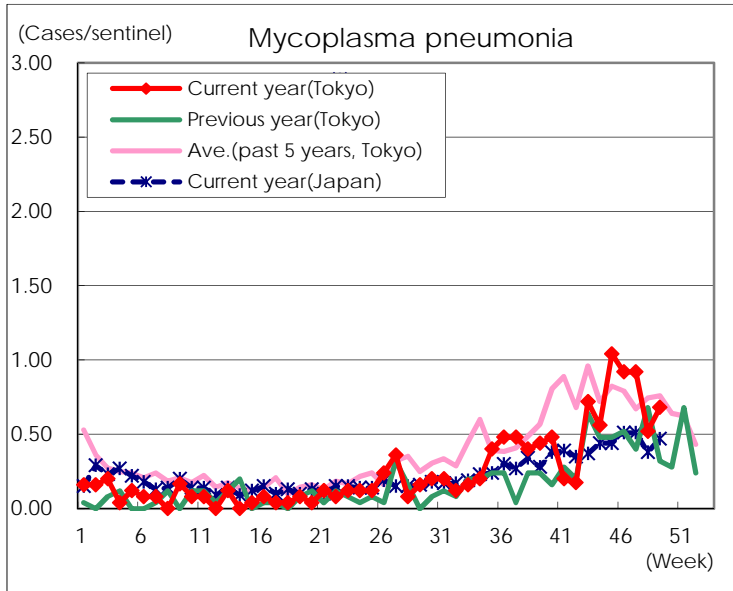
( Blank means 0. )

# Disease Trend Graph (weekly reported cases per sentinel in comparison)









Number of sentinel facilities for weekly reporting		
Types of sentinels	Number of sentinels	Sentinels having reported
Pediatric	264	260
Influenza	419	414
Ophthalmic	39	38
Specially-designated	25	25