

19 December 2019 / Number 50

Surveillance System in Tokyo, Japan

The infectious diseases which all physicians must report

All physicians must report to health centers the incidence of the diseases which are shown at page one. Health centers electronically report the individual cases to Tokyo Metropolitan Infectious Disease Surveillance Center.

The infectious diseases required to be reported by the sentinels

The numbers of patients who visit the sentinel clinics or hospitals during a week are reported to health centers in Tokyo. And they electronically report the numbers to Tokyo Metropolitan Infectious Disease Surveillance Center. We have about 500 sentinel clinics and hospitals in Tokyo.

Tokyo Metropolitan Institute of Public Health

TEL:81-3-3363-3213 FAX:81-3-5332-7365

e-mail:www@tokyo-eiken.go.jp

URL:idsc.tokyo-eiken.go.jp/

Number of patients with the diseases which all physicians must report

Category	Diseases	Tokyo					Japan	
		47th	48th	49th	50th	Cum 2019	50th	Cum 2019
I	Ebola hemorrhagic fever							
	Crimean-Congo hemorrhagic fever							
	Smallpox							
	South American hemorrhagic fever							
	Plague							
	Marburg disease							
	Lassa fever							
II	Acute poliomyelitis							
	Tuberculosis	56	62	60	55	3,038	313	20,291
	Diphtheria							
	Severe Acute Respiratory Syndrome(SARS)							
	Middle East Respiratory Syndrome (MERS)							
	Avian influenza H5N1							
	Avian influenza H7N9							
III	Cholera					2		5
	Shigellosis	3	2	1		26	13	132
	Enterohemorrhagic Escherichia coli infection	8	3	3	6	383	31	3,683
	Typhoid fever					3		35
	Paratyphoid fever					4		19
IV	Hepatitis E	1	3	2	3	124	11	470
	West Nile fever							
	Hepatitis A	5		2		140	2	418
	Echinococcosis							22
	Yellow fever							
	Psittacosis					3		13
	Omsk hemorrhagic fever							
	Relapsing fever							7
	Kyasanur forest disease							
	Q fever							2
	Rabies							
	Coccidioidomycosis							2
	Monkeypox							
	Zika virus infection							3
	Severe Fever with Thrombocytopenia Syndrome					1	1	101
	Hemorrhagic fever with renal syndrome							
	Western equine encephalitis							
	Tick-borne encephalitis							
	Anthrax							
	Chikungunya fever					9		46
	Scrub typhus(Tsutsugamushi disease)	3		1	2	7	49	321
	Dengue fever	4	3	1		128	5	451
	Eastern equine encephalitis							
	Avian influenza (excluding H5N1 and H7N9)							
	Nipah virus infection							
	Japanese spotted fever						1	314
	Japanese encephalitis							8
	Hantavirus pulmonary syndrome							
	Herpes B virus infection							1
	Glanders							
	Brucellosis					1		2
	Venezuelan equine encephalitis							
	Hendra virus infection							
	Epidemic typhus							
	Botulism							3
Malaria		1				20	54	
Tularemia								
Lyme disease					1		17	
Lyssavirus infection(excluding rabies)								
Rift valley fever								
Melioidosis							2	
Legionellosis	5	2	4	1	181	29	2,257	
Leptospirosis					9		31	
Rocky mountain spotted fever								

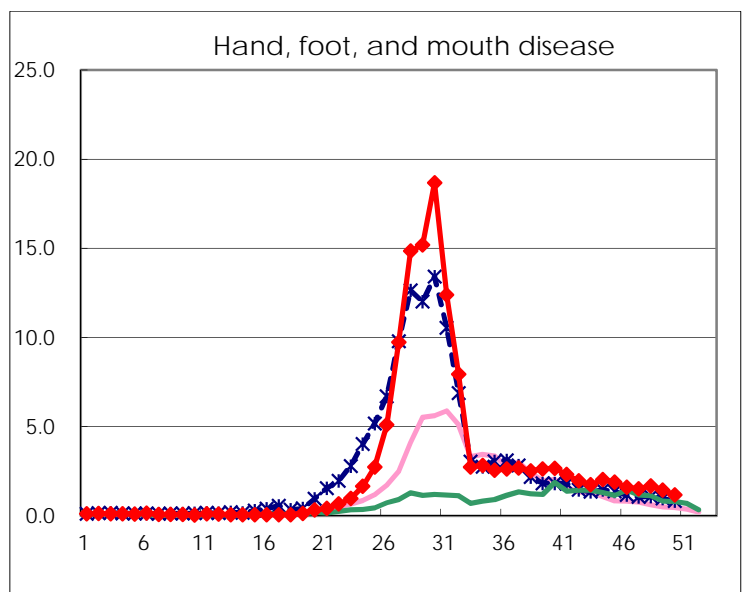
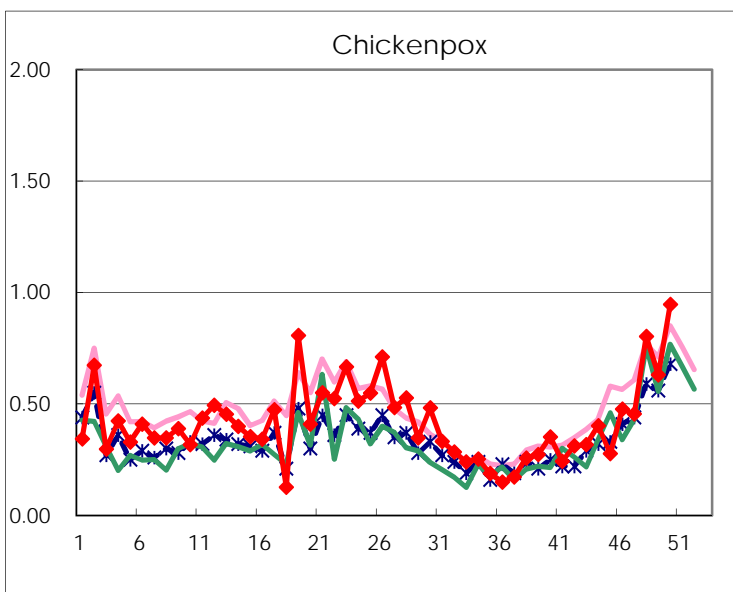
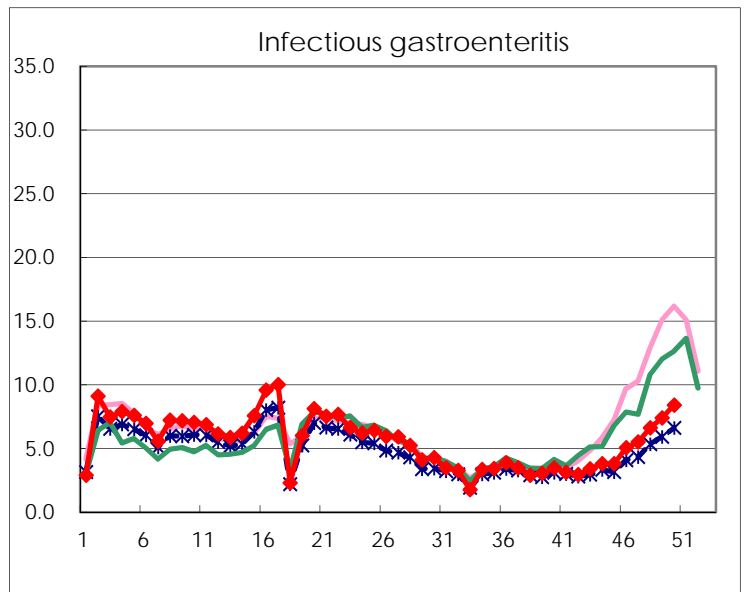
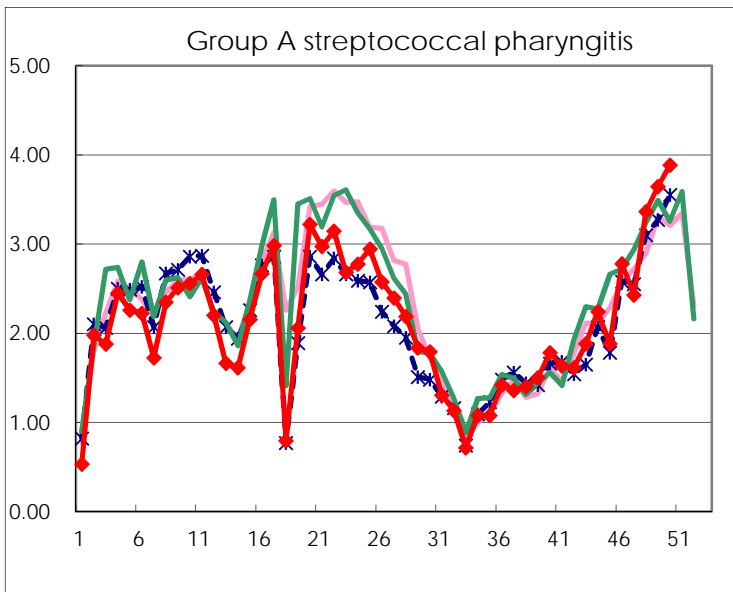
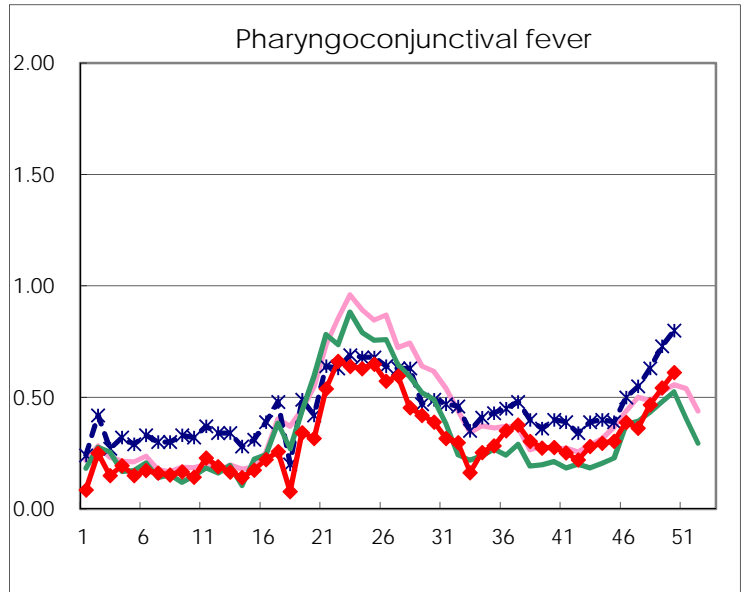
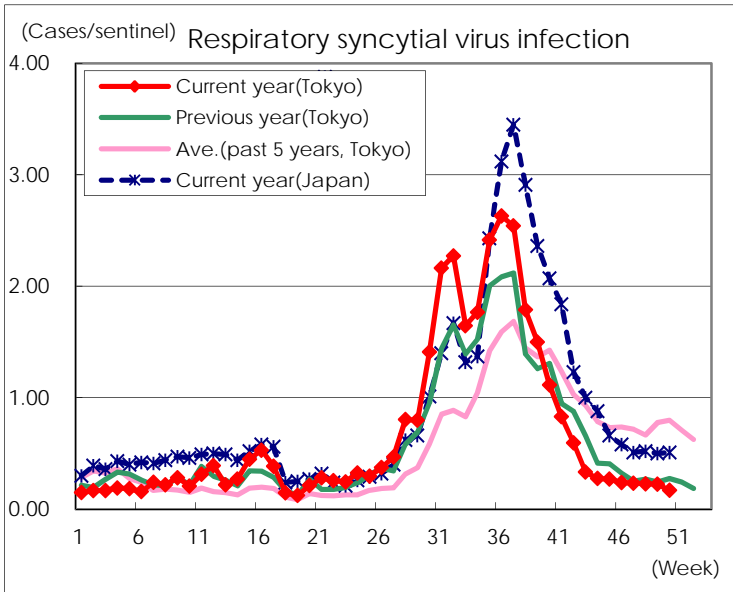
Category	Diseases	Tokyo					Japan	
		47th	48th	49th	50th	Cum 2019	50th	Cum 2019
V	Amebiasis	3	1	2	2	151	8	804
	Viral hepatitis(excluding hepatitis A and E)	2		3	1	95	4	317
	CRE infection	6	9	4	3	223	29	2,186
	Acute Flaccid Paralysis (excluding Acute poliomyelitis)				2	7	2	77
	Acute encephalitis(excluding JE and WNE)		2	3	3	80	20	858
	Cryptosporidiosis					4		19
	Creutzfeldt-Jakob disease					17	3	183
	Severe invasive streptococcal infections(TSLs)		2	3	3	119	17	887
	Acquired immunodeficiency syndrome (AIDS)	8	5	9	8	380	14	1,155
	Giardiasis			1	1	11	2	49
	Invasive <i>Haemophilus influenzae</i> disease				1	79		509
	Invasive meningococcal disease					4		46
	Invasive pneumococcal disease	12	11	8	7	356	61	3,113
	Varicella (limited to hospitalized case)	3	1	1	5	75	7	466
	Congenital rubella syndrome					2		4
	Syphilis	36	38	38	29	1,658	71	6,329
	Disseminated cryptococcosis		1			12		148
	Tetanus					8		118
	Vancomycin-resistant <i>S. aureus</i> infection							
	Vancomycin-resistant <i>Enterococcus</i> infection					8		74
	Pertussis	19	23	17	13	1,311	167	16,335
Rubella	2	2	2	2	860	5	2,288	
Measles			2	1	124	1	742	
MDRA infection					2	1	25	

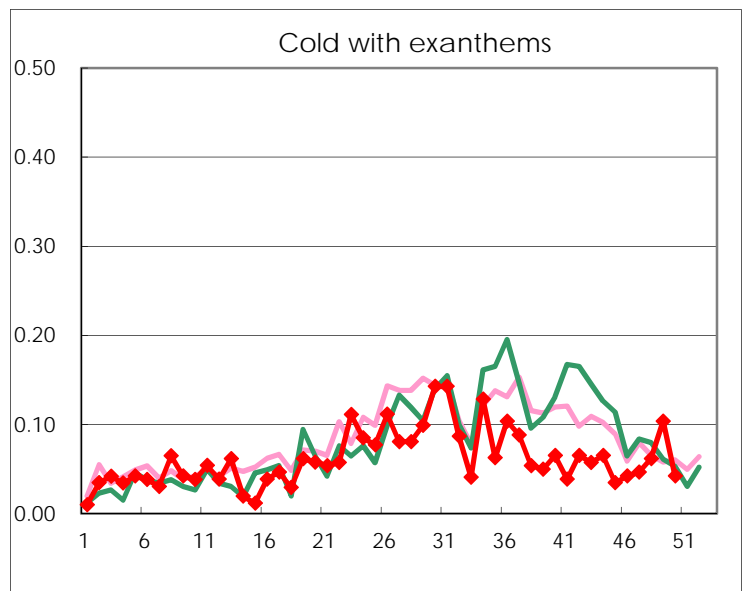
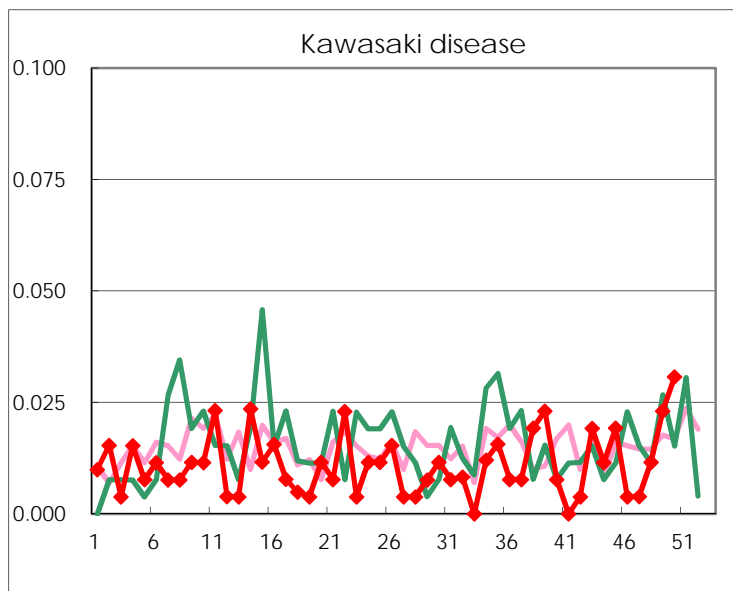
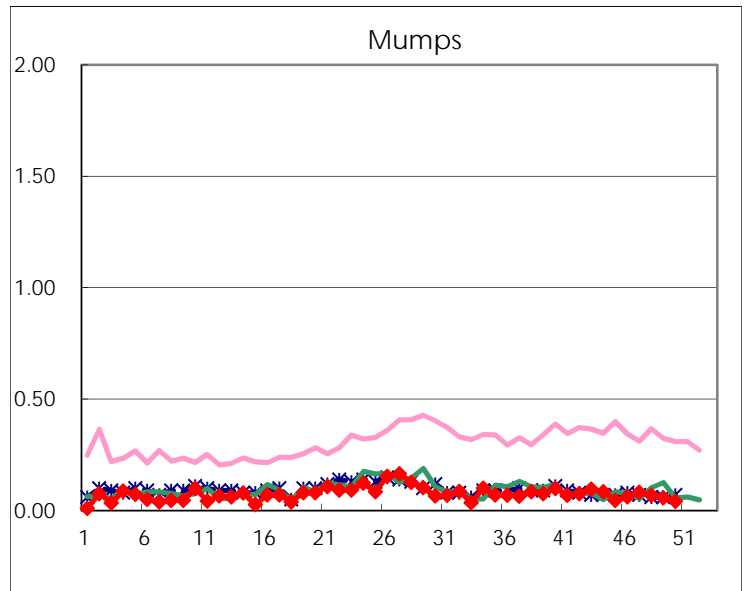
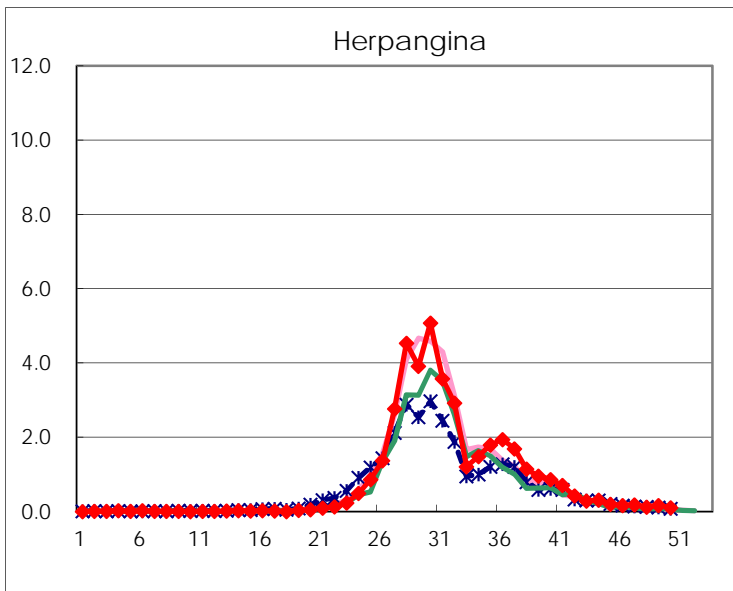
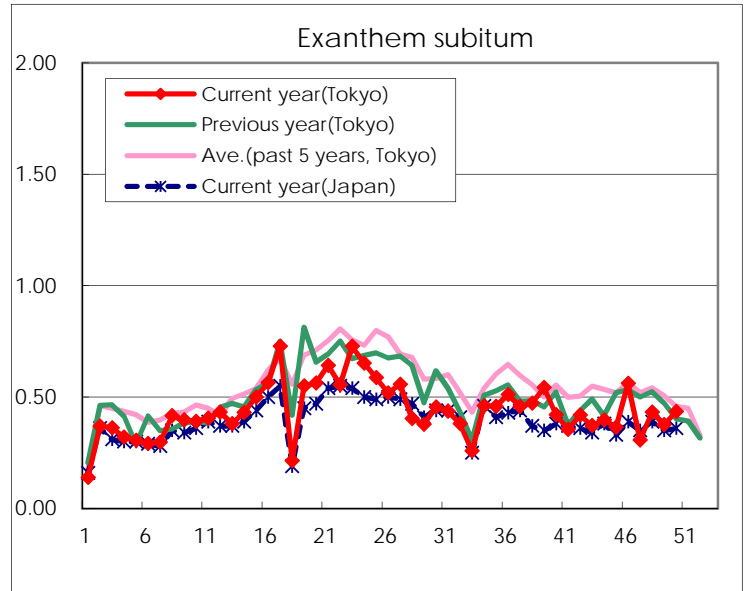
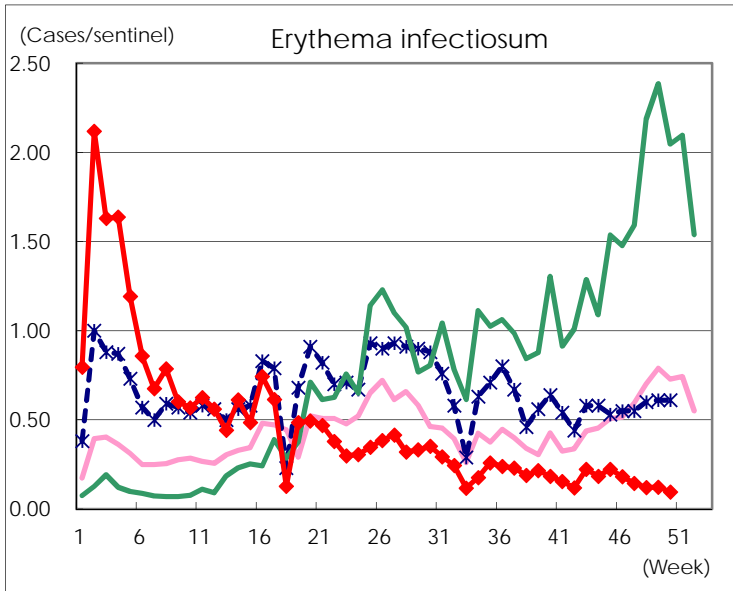
Number of patients with the diseases to be reported
by the designated clinics and hospitals

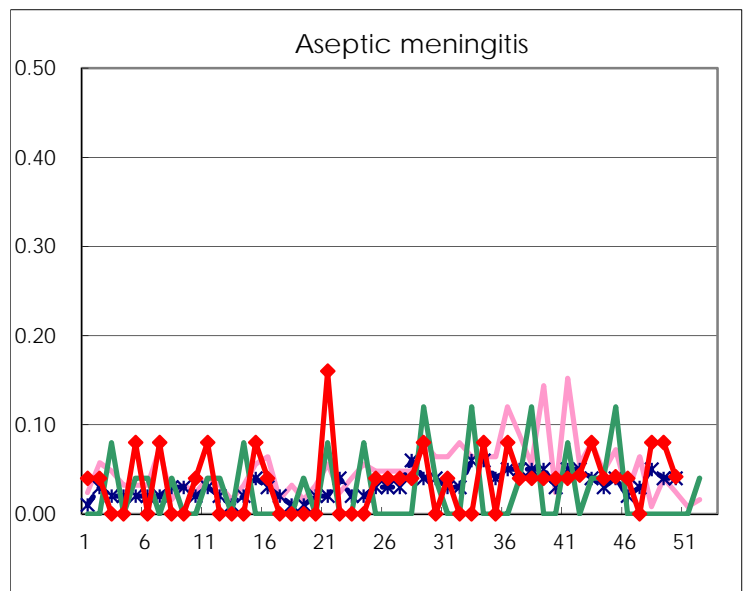
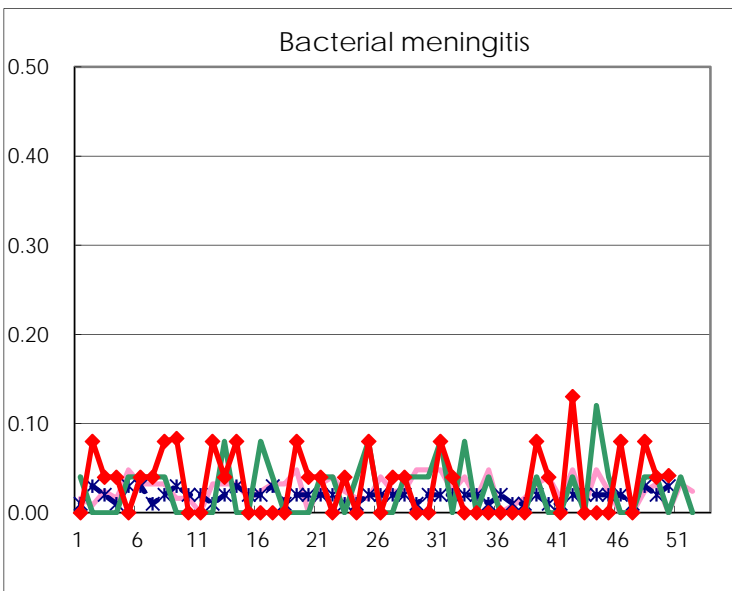
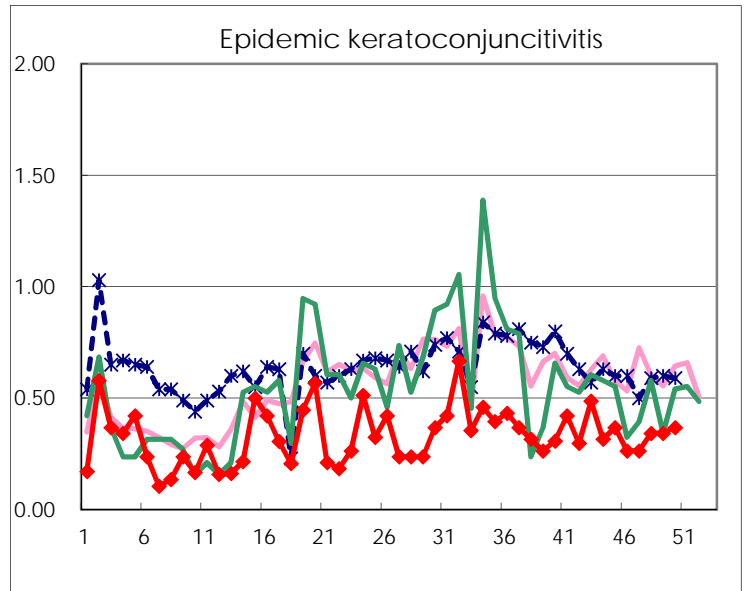
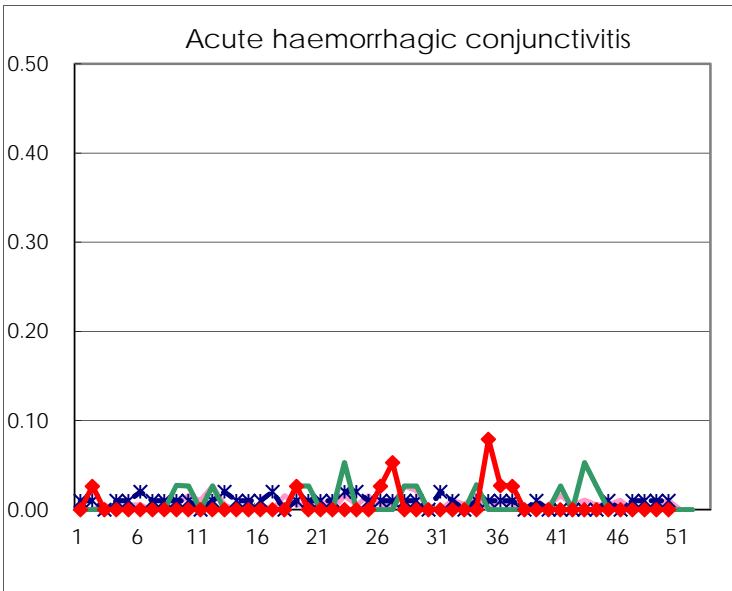
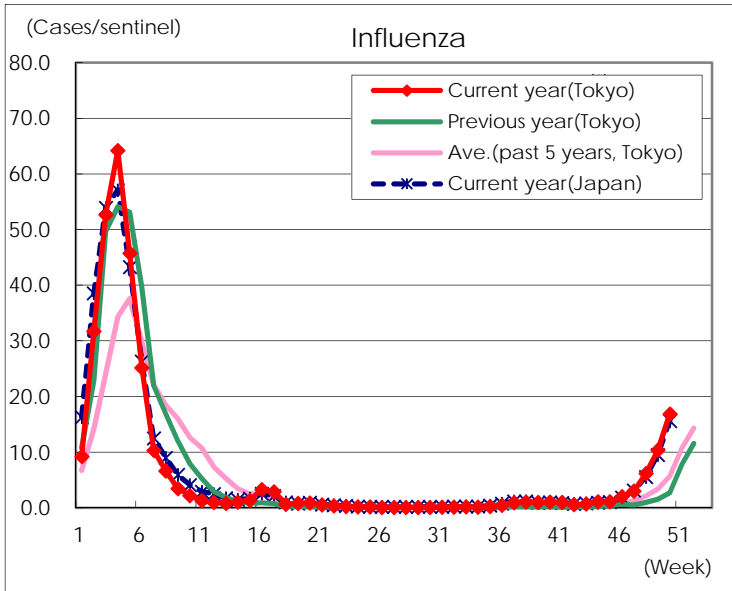
Diseases	Tokyo				
	47th	48th	49th	50th	/sentinel
Respiratory syncytial virus infection	60	59	58	44	0.17
Pharyngoconjunctival fever	93	121	141	159	0.61
Group A streptococcal pharyngitis	624	871	948	1,010	3.88
Infectious gastroenteritis	1,413	1,711	1,922	2,186	8.41
Chickenpox	117	208	164	246	0.95
Hand, foot, and mouth disease	386	434	374	305	1.17
Erythema infectiosum	37	31	32	25	0.10
Exanthem subitum	79	112	98	113	0.43
Herpangina	47	32	43	26	0.10
Mumps	21	18	15	11	0.04
Kawasaki disease	1	3	6	8	0.03
Cold with exanthems	12	16	27	11	0.04
Influenza	1,229	2,547	4,288	6,972	16.84
Acute hemorrhagic conjunctivitis					
Epidemic keratoconjunctivitis	10	13	13	14	0.37
Bacterial meningitis		2	1	1	0.04
Aseptic meningitis		2	2	1	0.04
<i>Mycoplasma pneumoniae</i>	23	13	17	15	0.63
Chlamydial pneumonia (excluding psittacosis)		1	1		
Infectious gastroenteritis (only by Rotavirus)	1	2			
Influenza-Associated Hospitalizations	12	20	21	69	2.88

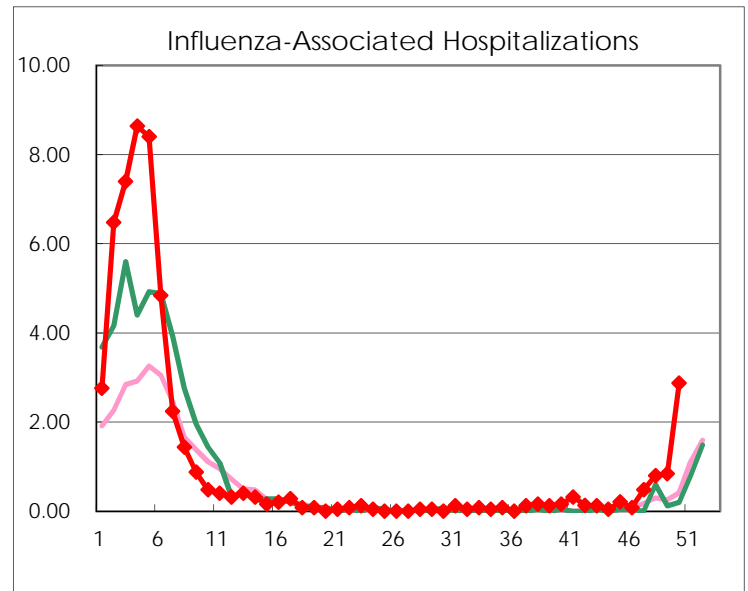
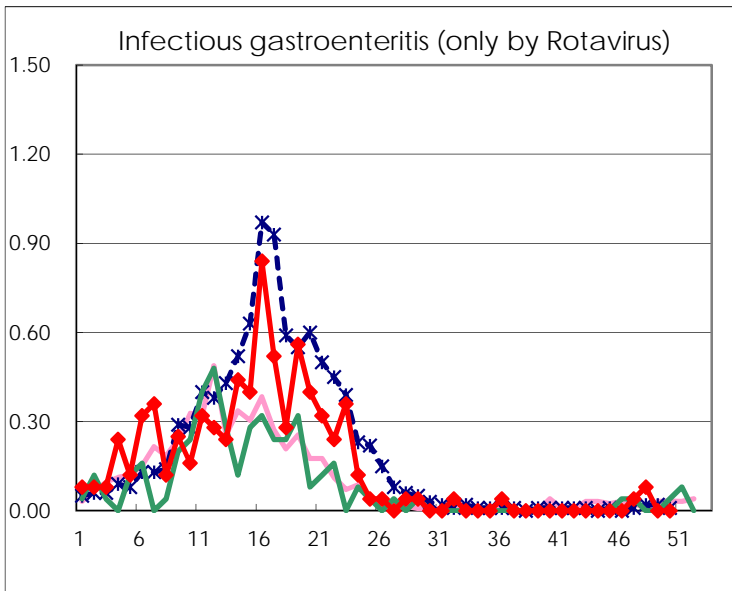
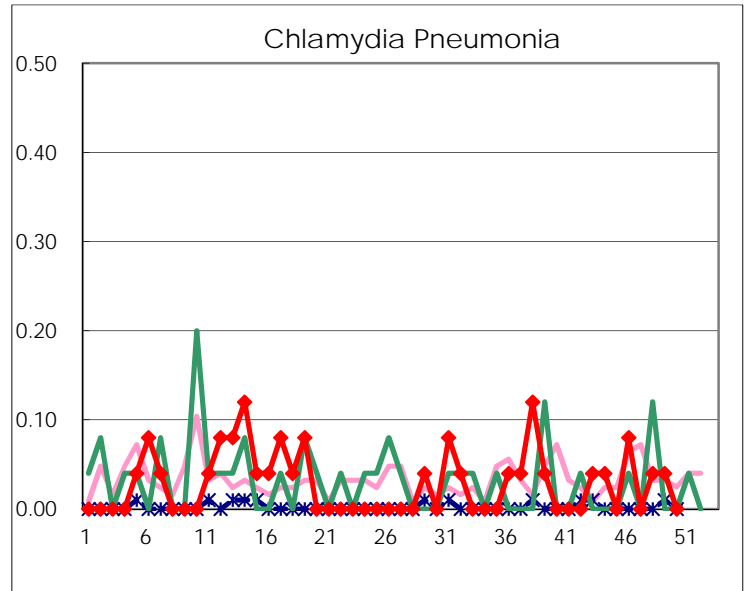
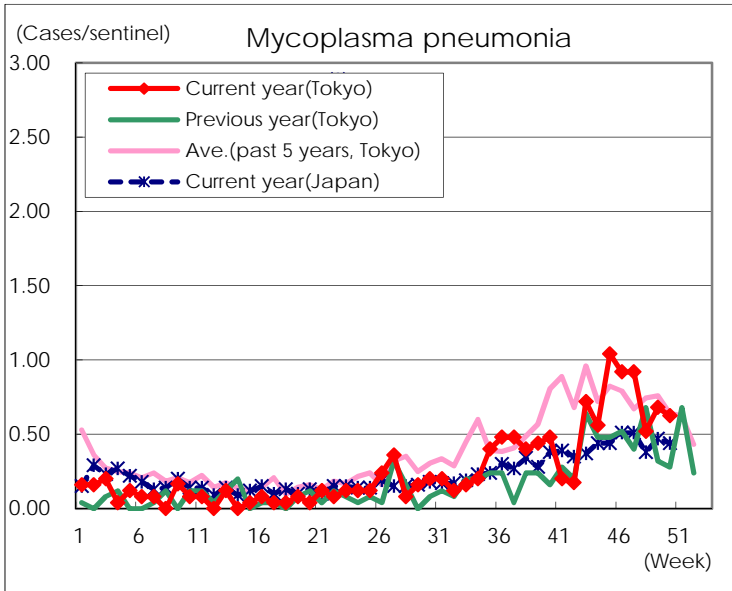
(Blank means 0.)

Disease Trend Graph (weekly reported cases per sentinel in comparison)









Number of sentinel facilities for weekly reporting		
Types of sentinels	Number of sentinels	Sentinels having reported
Pediatric	264	260
Influenza	419	414
Ophthalmic	39	38
Specially-designated	25	24