

19 March 2020 / Number 11
(3/9 ~ 3/15)

Surveillance System in Tokyo, Japan

The infectious diseases which all physicians must report

All physicians must report to health centers the incidence of the diseases which are shown at page one. Health centers electronically report the individual cases to Tokyo Metropolitan Infectious Disease Surveillance Center.

The infectious diseases required to be reported by the sentinels

The numbers of patients who visit the sentinel clinics or hospitals during a week are reported to health centers in Tokyo. And they electronically report the numbers to Tokyo Metropolitan Infectious Disease Surveillance Center. We have about 500 sentinel clinics and hospitals in Tokyo.

Tokyo Metropolitan Institute of Public Health

TEL:81-3-3363-3213 FAX:81-3-5332-7365

e-mail:www@tokyo-eiken.go.jp

URL:idsc.tokyo-eiken.go.jp/

Number of patients with the diseases which all physicians must report

Category	Diseases	Tokyo					Japan	
		8th	9th	10th	11th	Cum 2020	11th	Cum 2020
I	Ebola hemorrhagic fever							
	Crimean-Congo hemorrhagic fever							
	Smallpox							
	South American hemorrhagic fever							
	Plague							
	Marburg disease							
	Lassa fever							
II	Acute poliomyelitis							
	Tuberculosis	60	47	53	44	528	291	3,498
	Diphtheria							
	Severe Acute Respiratory Syndrome(SARS)							
	Middle East Respiratory Syndrome (MERS)							
	Avian influenza H5N1							
	Avian influenza H7N9							
※	Novel Coronavirus 2019 infection	19	12	25	26	113	264	1,357
III	Cholera							
	Shigellosis					7	13	31
	Enterohemorrhagic Escherichia coli infection	4	5	5	1	28	11	221
	Typhoid fever					1	2	9
	Paratyphoid fever					1	2	3
IV	Hepatitis E		8	4		33	7	123
	West Nile fever							
	Hepatitis A	1				13	1	39
	Echinococcosis							4
	Yellow fever							
	Psittacosis							3
	Omsk hemorrhagic fever							
	Relapsing fever							
	Kyasanur forest disease							
	Q fever							
	Rabies							
	Coccidioidomycosis					1		1
	Monkeypox							
	Zika virus infection							
	Severe Fever with Thrombocytopenia Syndrome						1	5
	Hemorrhagic fever with renal syndrome							
	Western equine encephalitis							
	Tick-borne encephalitis							
	Anthrax							
	Chikungunya fever							3
	Scrub typhus(Tsutsugamushi disease)					4		56
	Dengue fever	1	1	1		8	1	32
	Eastern equine encephalitis							
	Avian influenza (excluding H5N1 and H7N9)							
	Nipah virus infection							
	Japanese spotted fever						1	7
	Japanese encephalitis							1
	Hantavirus pulmonary syndrome							
	Herpes B virus infection							
	Glanders							
	Brucellosis							1
	Venezuelan equine encephalitis							
	Hendra virus infection							
Epidemic typhus								
Botulism								
Malaria						3	7	
Tularemia								
Lyme disease							1	
Lyssavirus infection(excluding rabies)								
Rift valley fever								
Melioidosis								
Legionellosis	1	4	1		16	28	307	
Leptospirosis							1	
Rocky mountain spotted fever								

Category	Diseases	Tokyo					Japan	
		8th	9th	10th	11th	Cum 2020	11th	Cum 2020
V	Amebiasis	2	1	4	2	30	8	123
	Viral hepatitis(excluding hepatitis A and E)	2	3	1	2	12	4	51
	CRE infection	5	4	1	3	25	18	309
	Acute Flaccid Paralysis (excluding Acute poliomyelitis)					1		5
	Acute encephalitis(excluding JE and WNE)	1		3		16	4	215
	Cryptosporidiosis							1
	Creutzfeldt-Jakob disease			1		3	1	27
	Severe invasive streptococcal infections(TSLS)	3	2	5		26	6	206
	Acquired immunodeficiency syndrome (AIDS)	9	2	12	5	70	12	188
	Giardiasis			1		2	1	9
	Invasive <i>Haemophilus influenzae</i> disease	1		2	1	13	2	110
	Invasive meningococcal disease					1		10
	Invasive pneumococcal disease	3	2	13	3	73	27	628
	Varicella (limited to hospitalized case)	2	1		2	16	5	93
	Congenital rubella syndrome							1
	Syphilis	31	30	27	25	294	62	1,094
	Disseminated cryptococcosis					1		22
	Tetanus				1	2	3	16
	Vancomycin-resistant <i>S. aureus</i> infection							
	Vancomycin-resistant Enterococcus infection	1			2	3	3	28
Pertussis	12	10	12	10	154	111	1,747	
Rubella	2	1	3	2	20	4	68	
Measles		1			2	2	9	
MDRA infection							2	

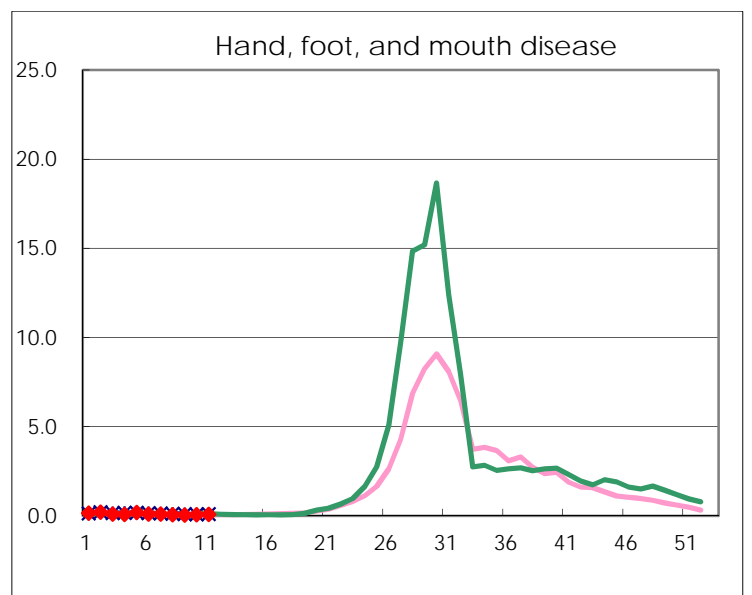
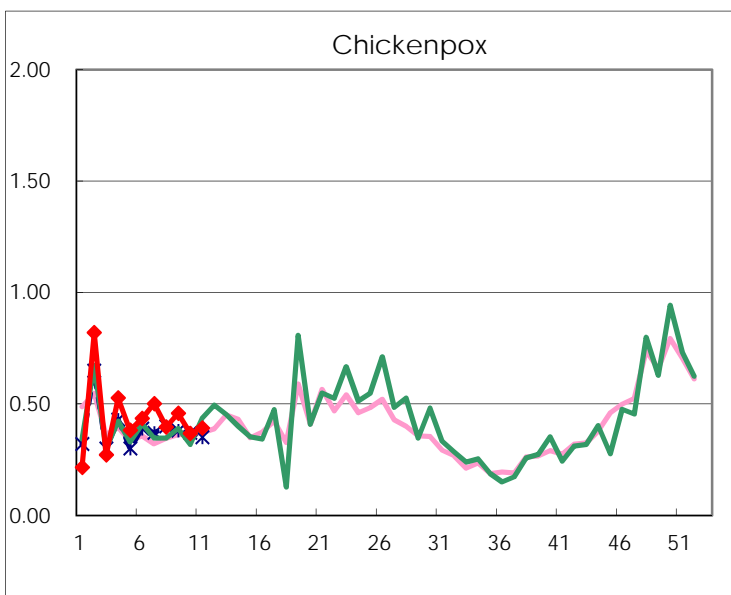
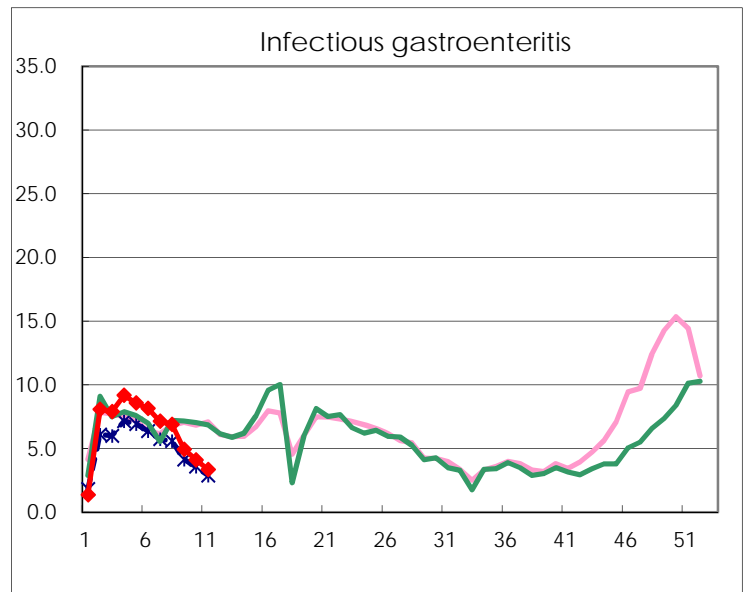
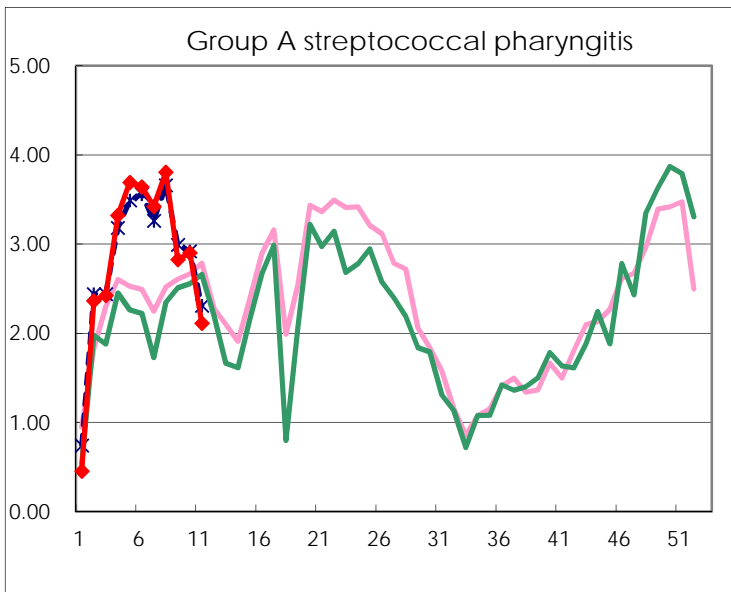
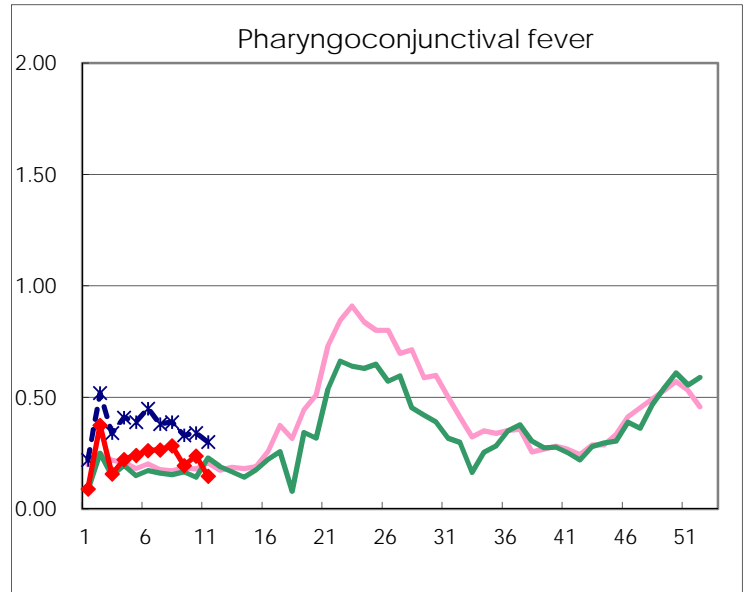
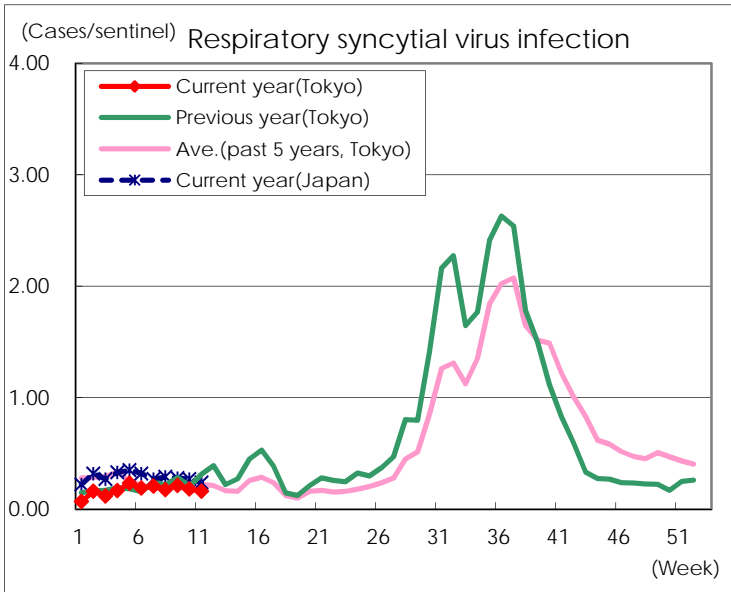
※ Designated infectious disease

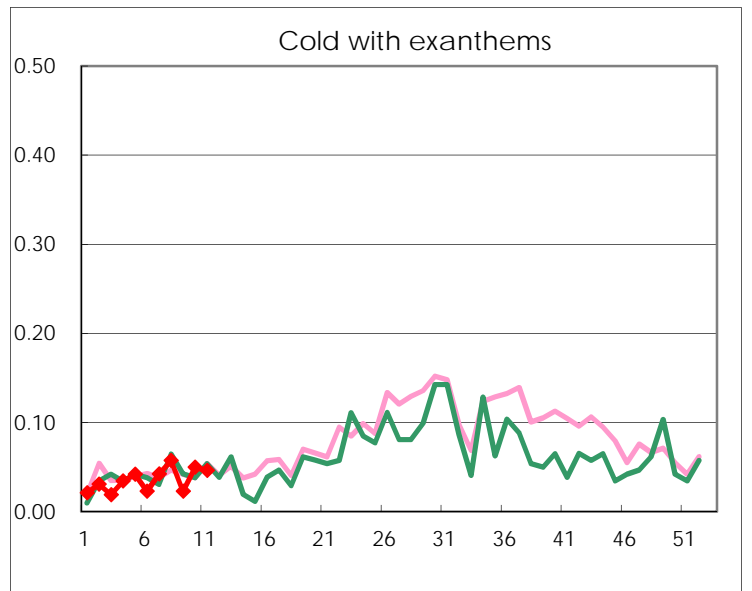
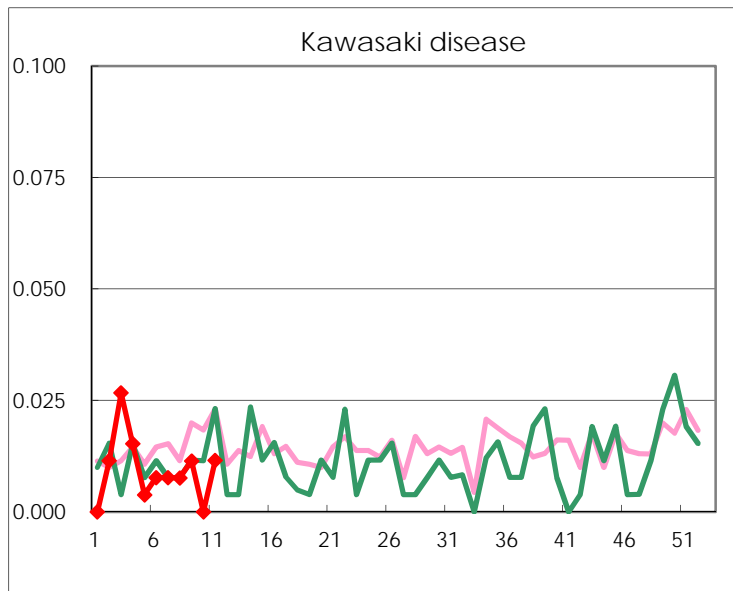
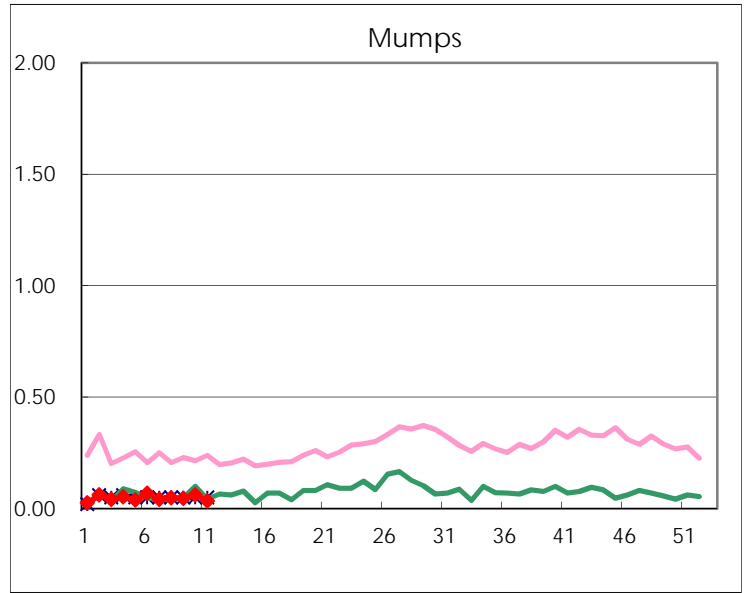
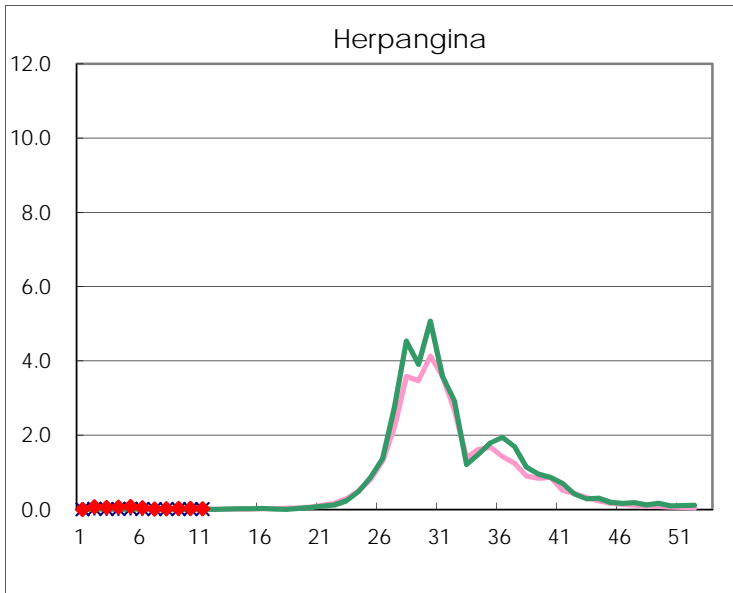
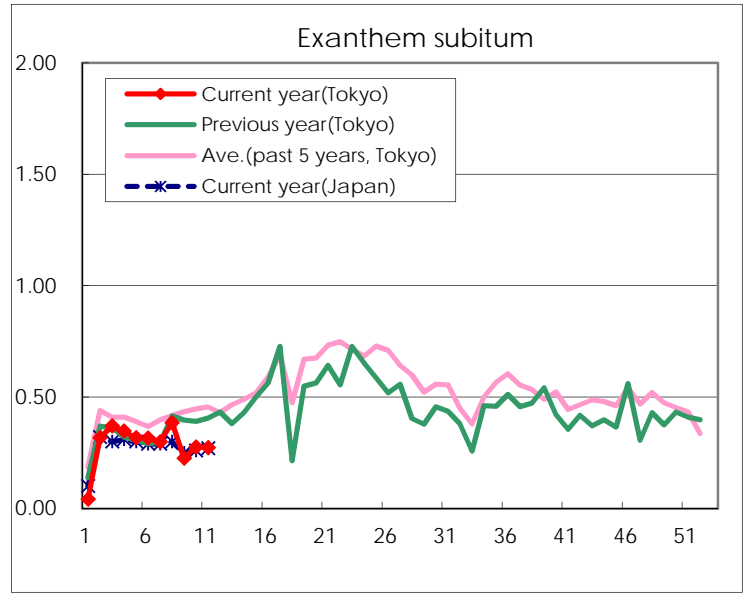
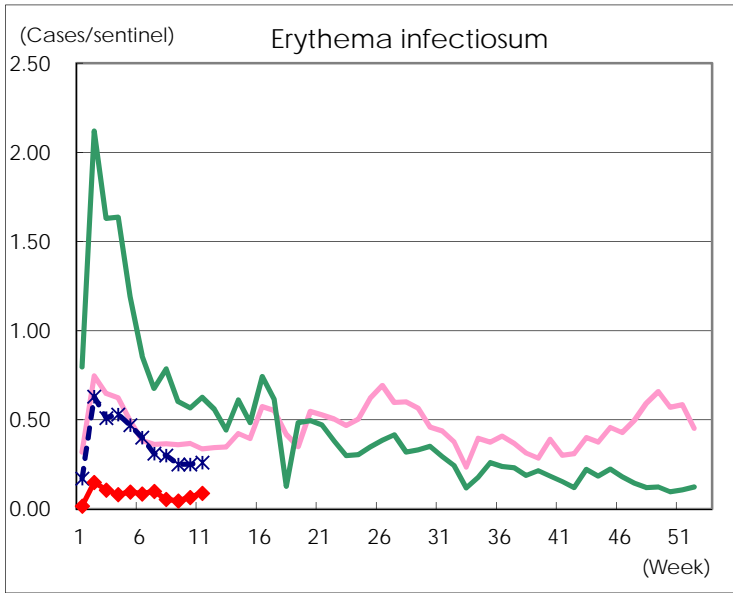
Number of patients with the diseases to be reported
by the designated clinics and hospitals

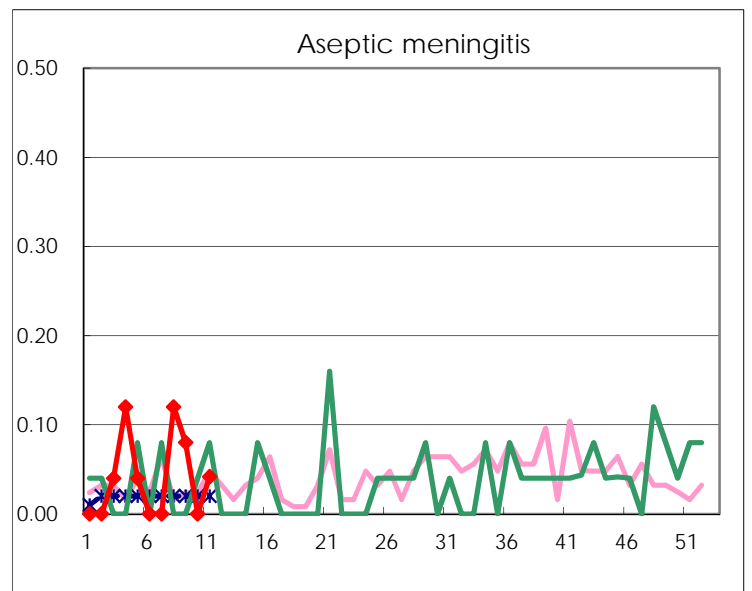
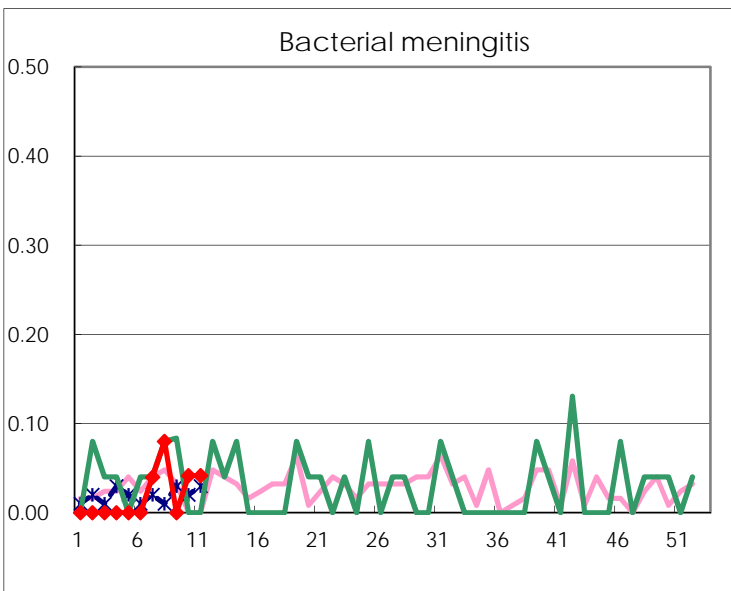
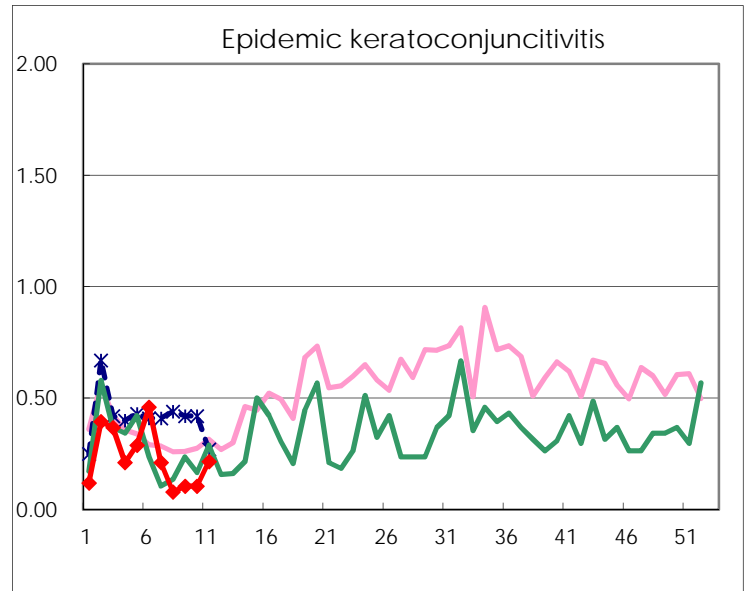
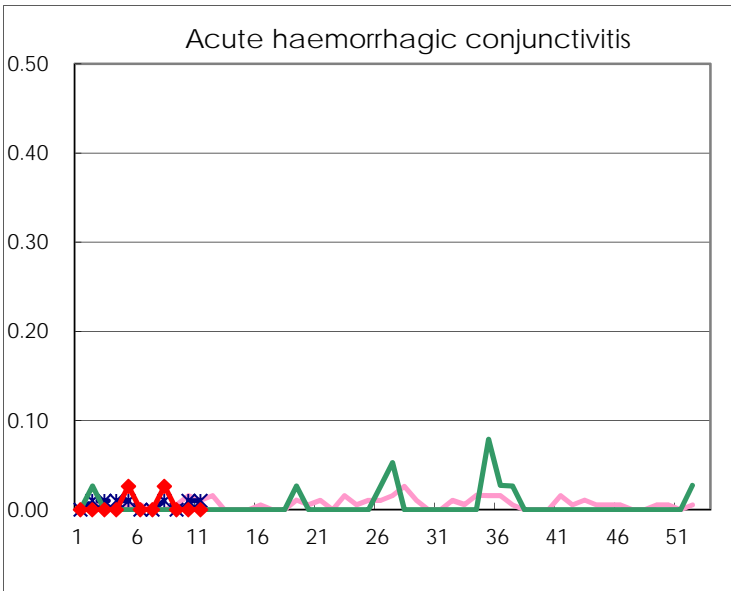
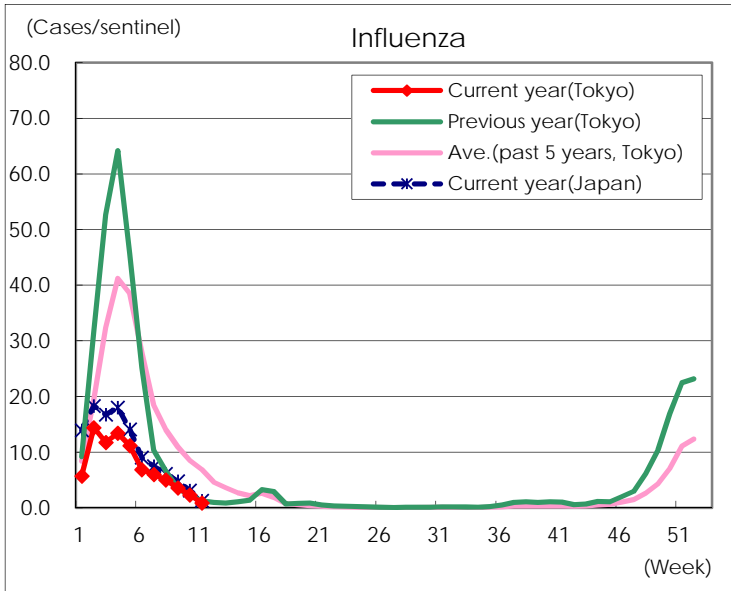
Diseases	Tokyo				
	8th	9th	10th	11th	/sentinel
Respiratory syncytial virus infection	46	56	47	42	0.16
Pharyngoconjunctival fever	74	51	62	38	0.15
Group A streptococcal pharyngitis	997	740	757	549	2.11
Infectious gastroenteritis	1,802	1,294	1,070	867	3.33
Chickenpox	104	120	96	102	0.39
Hand, foot, and mouth disease	15	12	14	20	0.08
Erythema infectiosum	14	12	17	23	0.09
Exanthem subitum	101	59	72	71	0.27
Herpangina	6	9	9	6	0.02
Mumps	13	12	16	9	0.03
Kawasaki disease	2	3		3	0.01
Cold with exanths	15	6	13	12	0.05
Influenza	2,085	1,490	968	372	0.90
Acute hemorrhagic conjunctivitis	1				
Epidemic keratoconjunctivitis	3	4	4	8	0.22
Bacterial meningitis	2		1	1	0.04
Aseptic meningitis	3	2		1	0.04
Mycoplasma pneumonia	7	11	6	6	0.25
Chlamydial pneumonia (excluding psittacosis)	3	1	3		
Infectious gastroenteritis (only by Rotavirus)					
Influenza-Associated Hospitalizations	7	11	2	1	0.04

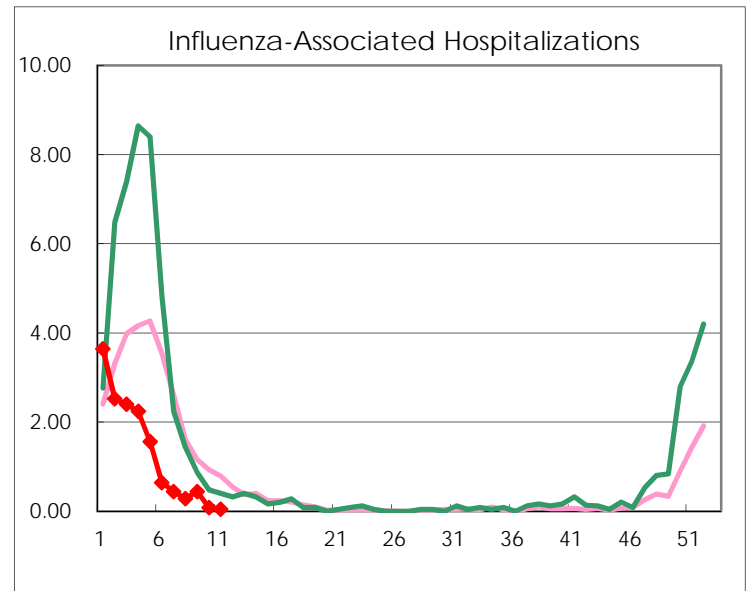
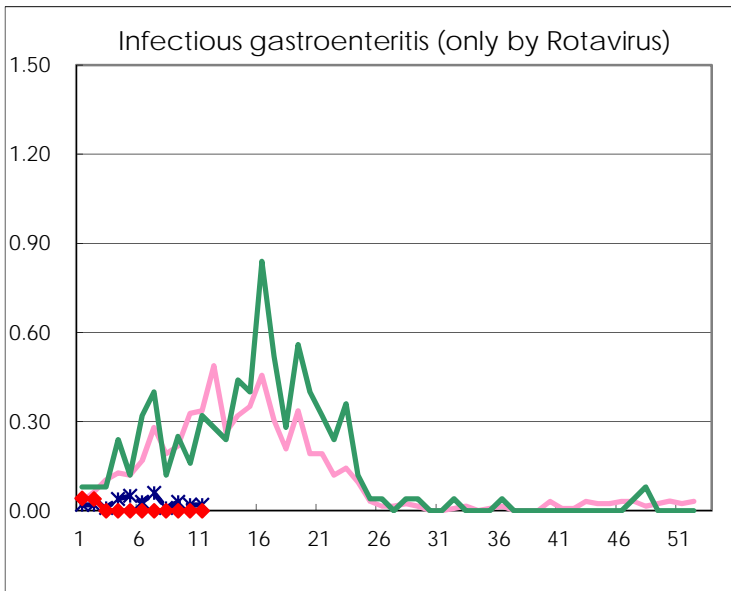
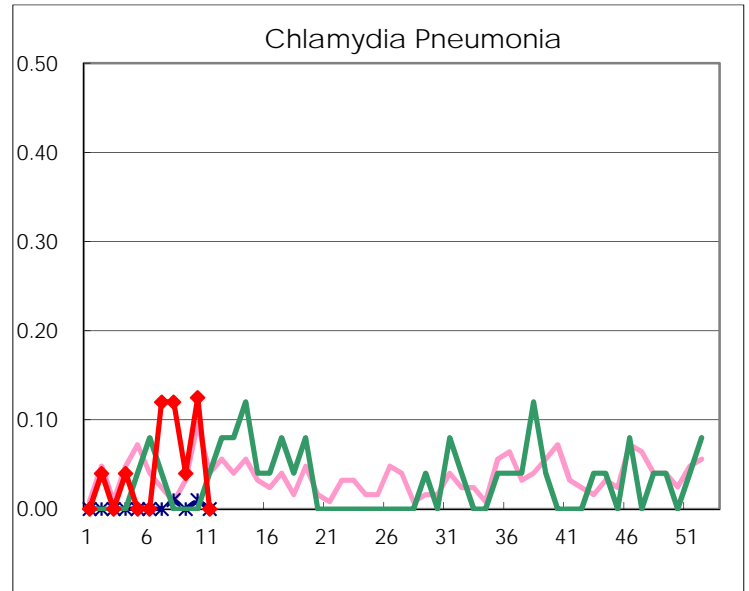
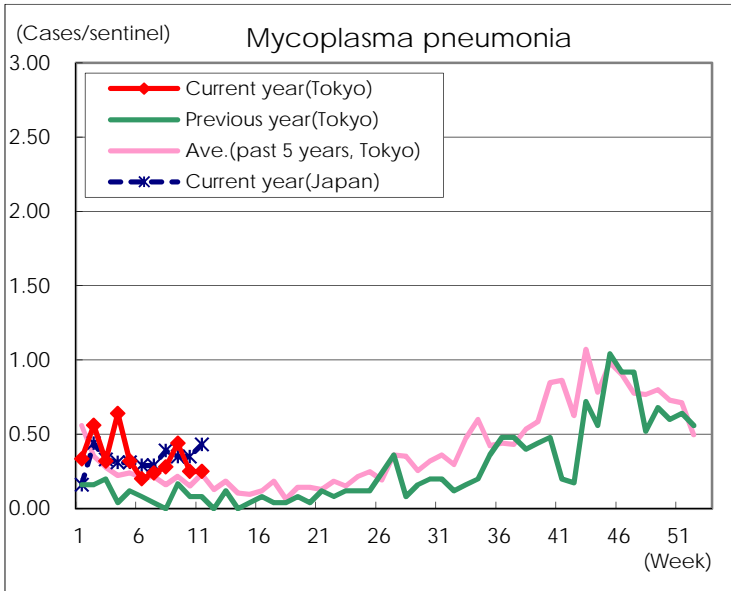
(Blank means 0.)

Disease Trend Graph (weekly reported cases per sentinel in comparison)









Number of sentinel facilities for weekly reporting		
Types of sentinels	Number of sentinels	Sentinels having reported
Pediatric	264	260
Influenza	419	415
Ophthalmic	39	37
Specially-designated	25	24