

**2 April 2020 / Number 13**  
**( 3/23 ~ 3/29 )**

Surveillance System in Tokyo, Japan

The infectious diseases which all physicians must report

All physicians must report to health centers the incidence of the diseases which are shown at page one. Health centers electronically report the individual cases to Tokyo Metropolitan Infectious Disease Surveillance Center.

The infectious diseases required to be reported by the sentinels

The numbers of patients who visit the sentinel clinics or hospitals during a week are reported to health centers in Tokyo. And they electronically report the numbers to Tokyo Metropolitan Infectious Disease Surveillance Center. We have about 500 sentinel clinics and hospitals in Tokyo.

Tokyo Metropolitan Institute of Public Health

TEL:81-3-3363-3213 FAX:81-3-5332-7365

e-mail:[www@tokyo-eiken.go.jp](mailto:www@tokyo-eiken.go.jp)

URL:[idsc.tokyo-eiken.go.jp/](http://idsc.tokyo-eiken.go.jp/)

---

Number of patients with the diseases which all physicians must report

Category	Diseases	Tokyo					Japan	
		10th	11th	12th	13th	Cum 2020	13th	Cum 2020
I	Ebola hemorrhagic fever							
	Crimean-Congo hemorrhagic fever							
	Smallpox							
	South American hemorrhagic fever							
	Plague							
	Marburg disease							
	Lassa fever							
II	Acute poliomyelitis							
	Tuberculosis	55	47	44	42	624	307	4,147
	Diphtheria							
	Severe Acute Respiratory Syndrome(SARS)							
	Middle East Respiratory Syndrome (MERS)							
	Avian influenza H5N1							
	Avian influenza H7N9							
※	Novel Coronavirus 2019 infection	25	26	47	278	438	730	2,456
III	Cholera							
	Shigellosis			1		8		36
	Enterohemorrhagic Escherichia coli infection	5	1		1	29	18	245
	Typhoid fever					1	1	10
	Paratyphoid fever					1		6
IV	Hepatitis E	4		2	4	39	14	150
	West Nile fever							
	Hepatitis A			1		14	3	43
	Echinococcosis							5
	Yellow fever							
	Psittacosis							3
	Omsk hemorrhagic fever							
	Relapsing fever							
	Kyasanur forest disease							
	Q fever							
	Rabies							
	Coccidioidomycosis					1		1
	Monkeypox							
	Zika virus infection							
	Severe Fever with Thrombocytopenia Syndrome							6
	Hemorrhagic fever with renal syndrome							
	Western equine encephalitis							
	Tick-borne encephalitis							
	Anthrax							
	Chikungunya fever							3
	Scrub typhus(Tsutsugamushi disease)					4		56
	Dengue fever	1	2			10	1	35
	Eastern equine encephalitis							
	Avian influenza (excluding H5N1 and H7N9)							
	Nipah virus infection							
	Japanese spotted fever							7
	Japanese encephalitis							1
	Hantavirus pulmonary syndrome							
	Herpes B virus infection							
	Glanders							
	Brucellosis							1
	Venezuelan equine encephalitis							
	Hendra virus infection							
	Epidemic typhus							
	Botulism							
	Malaria					3		8
	Tularemia							
	Lyme disease							1
	Lyssavirus infection(excluding rabies)							
	Rift valley fever							
Melioidosis								
Legionellosis	1			4	20	16	348	
Leptospirosis							1	
Rocky mountain spotted fever								

Category	Diseases	Tokyo					Japan	
		10th	11th	12th	13th	Cum 2020	13th	Cum 2020
V	Amebiasis	4	2	1	2	33	9	147
	Viral hepatitis(excluding hepatitis A and E)	1	2		3	15	1	61
	CRE infection	1	3	2	3	30	20	367
	Acute Flaccid Paralysis (excluding Acute poliomyelitis)					1		6
	Acute encephalitis(excluding JE and WNE)	3				16	3	228
	Cryptosporidiosis							1
	Creutzfeldt-Jakob disease	1				3	1	33
	Severe invasive streptococcal infections(TSLS)	5		1	3	30	11	237
	Acquired immunodeficiency syndrome (AIDS)	15	5	1	10	84	18	231
	Giardiasis	1				2		9
	Invasive <i>Haemophilus influenzae</i> disease	2	1			13	3	116
	Invasive meningococcal disease					1		10
	Invasive pneumococcal disease	13	4	2	3	79	17	702
	Varicella (limited to hospitalized case)		3			17	1	102
	Congenital rubella syndrome							1
	Syphilis	27	25	17	26	337	58	1,297
	Disseminated cryptococcosis				3	4	5	29
	Tetanus		1			2	1	21
	Vancomycin-resistant <i>S. aureus</i> infection							
	Vancomycin-resistant Enterococcus infection		2			3	1	34
Pertussis	12	10	5	6	165	92	1,975	
Rubella	3	2			20		73	
Measles					2	2	11	
MDRA infection							2	

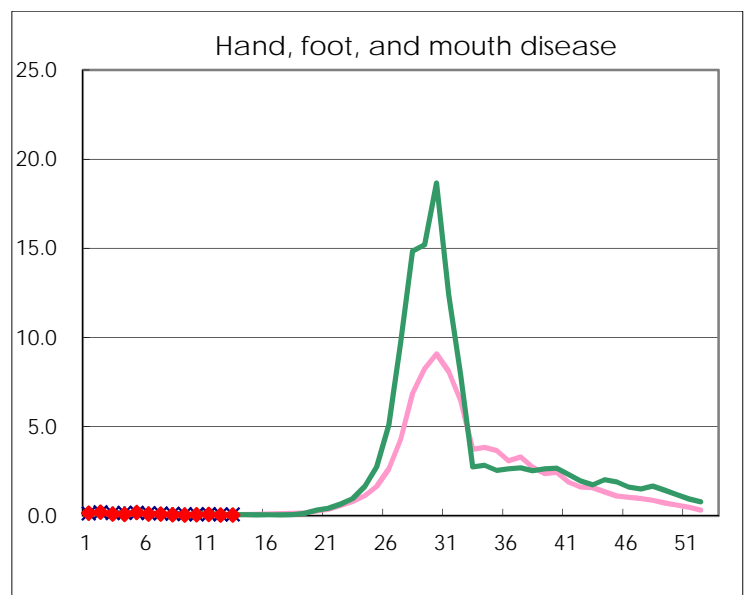
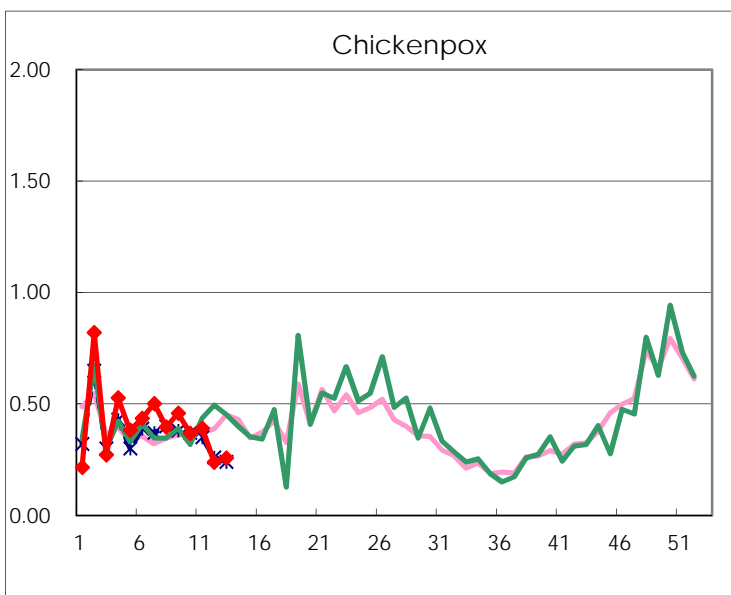
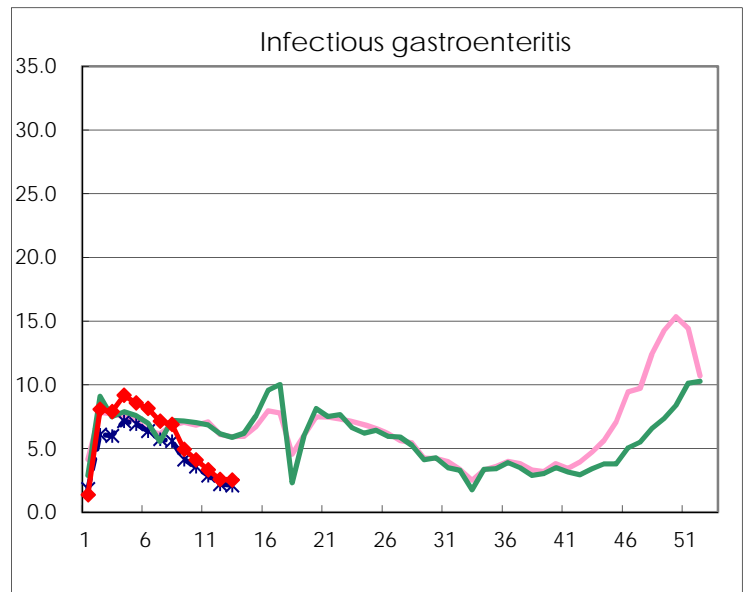
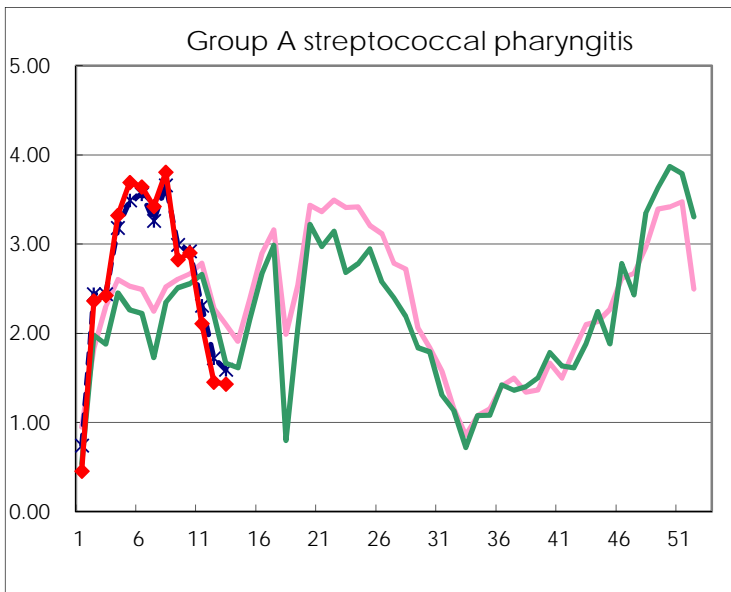
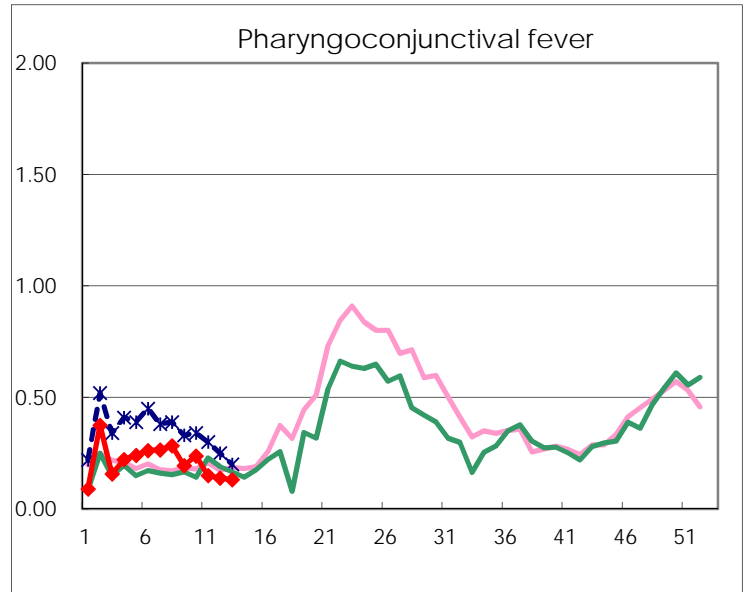
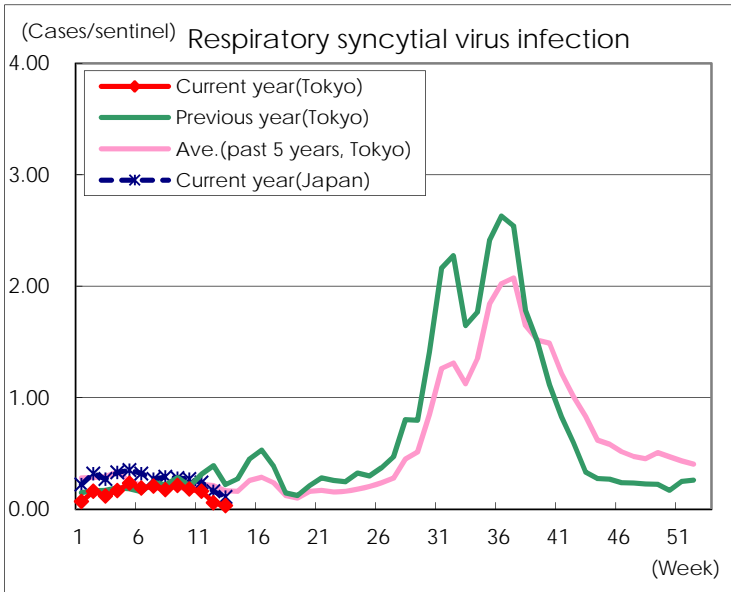
※ Designated infectious disease

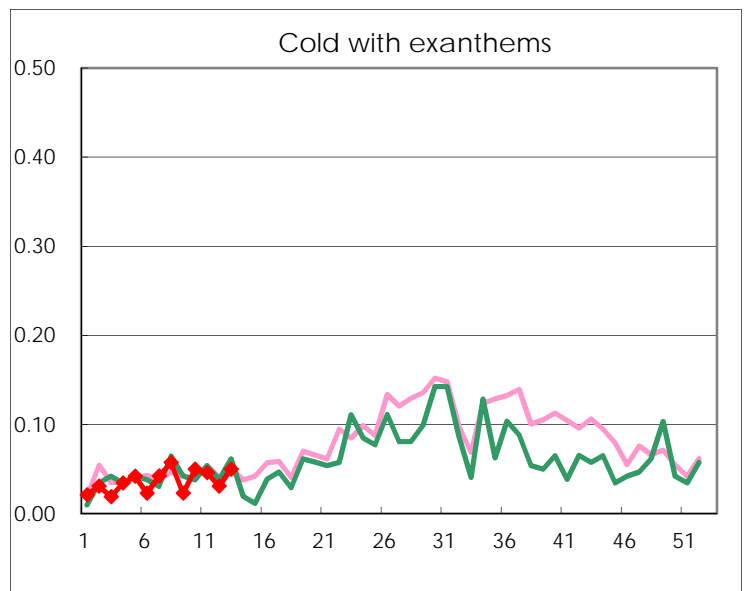
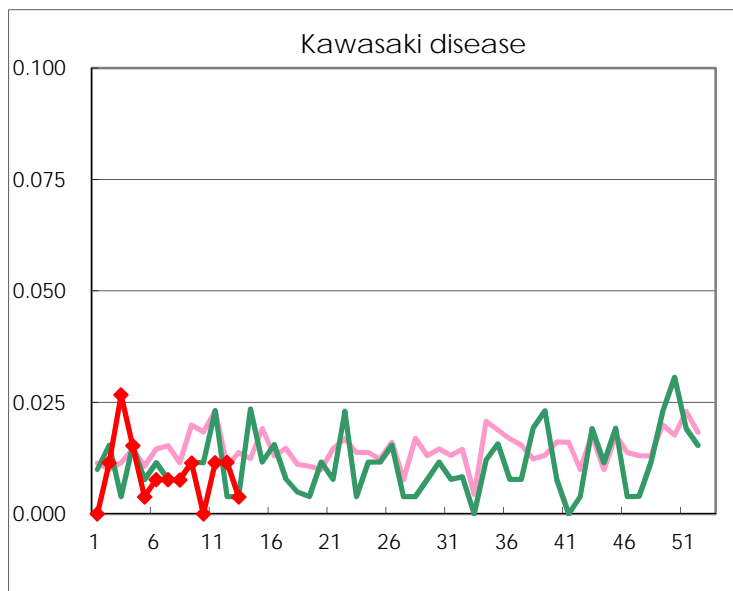
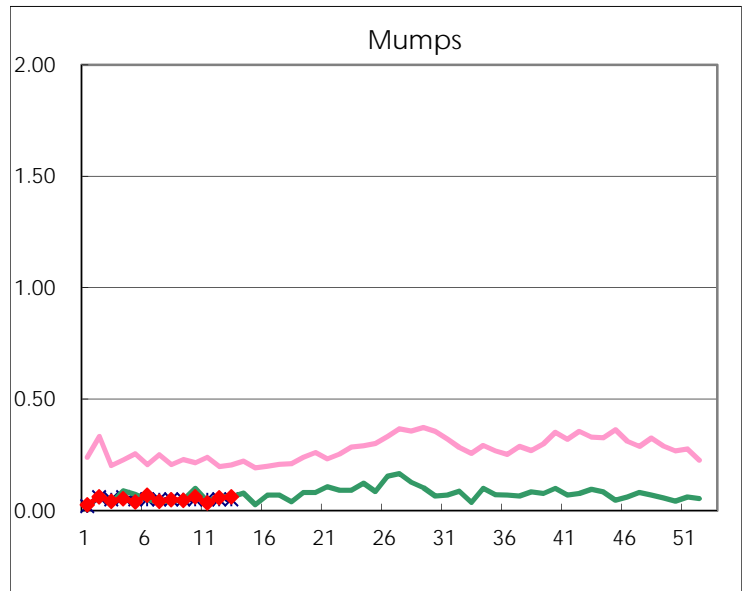
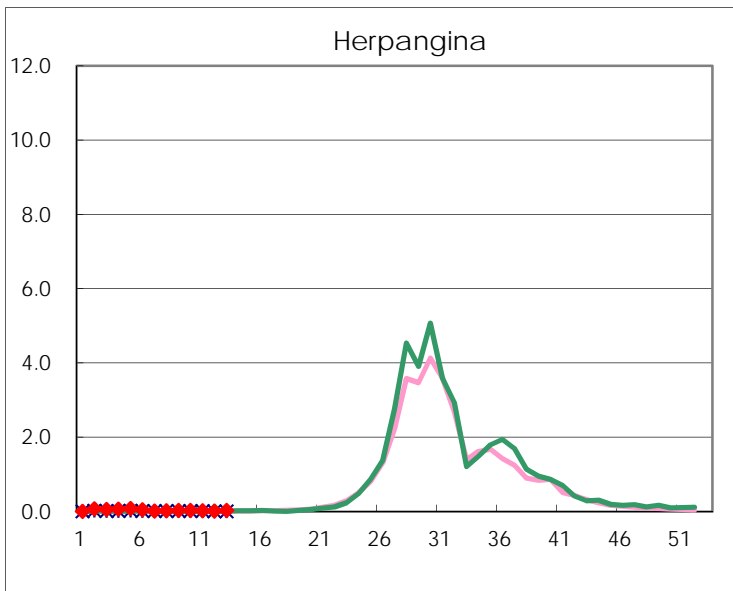
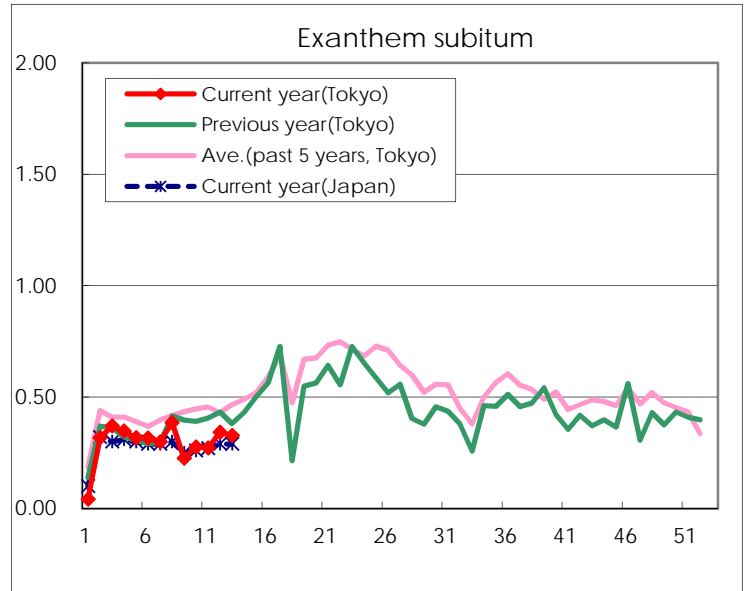
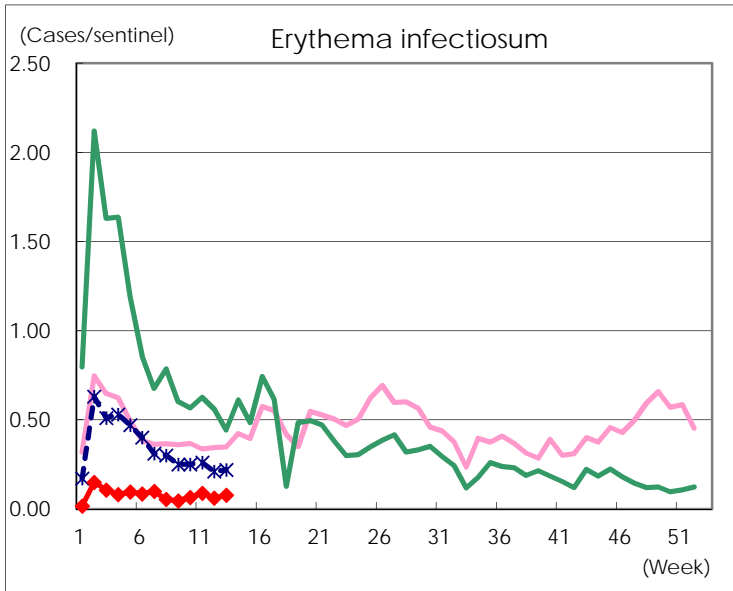
Number of patients with the diseases to be reported  
by the designated clinics and hospitals

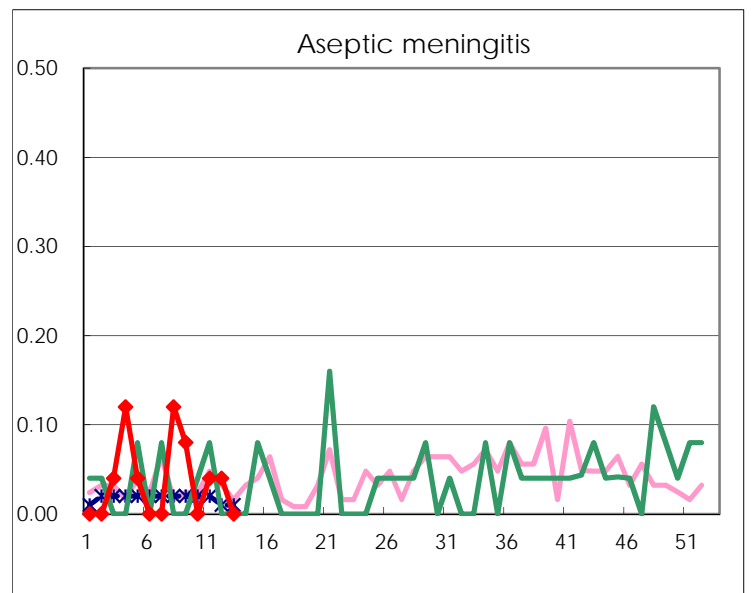
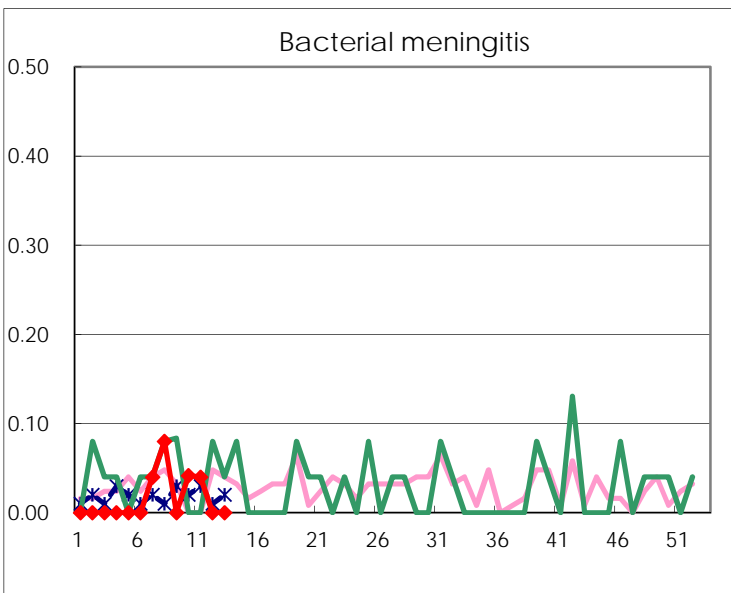
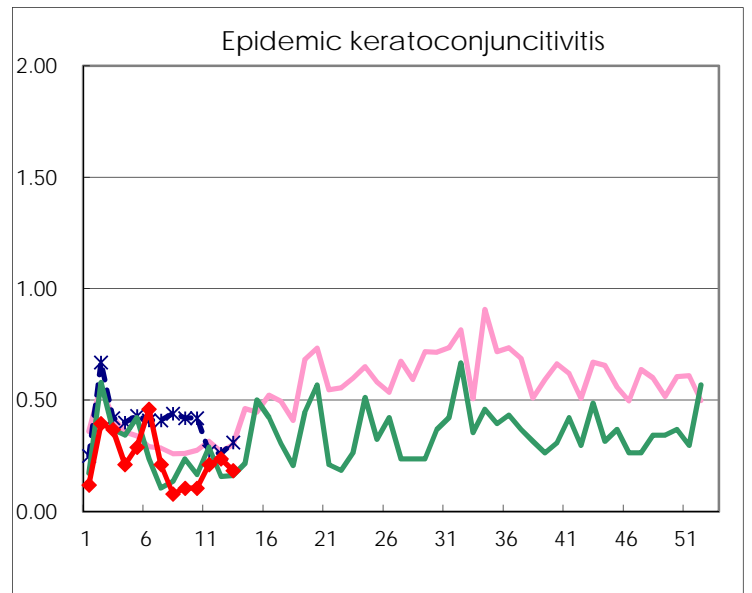
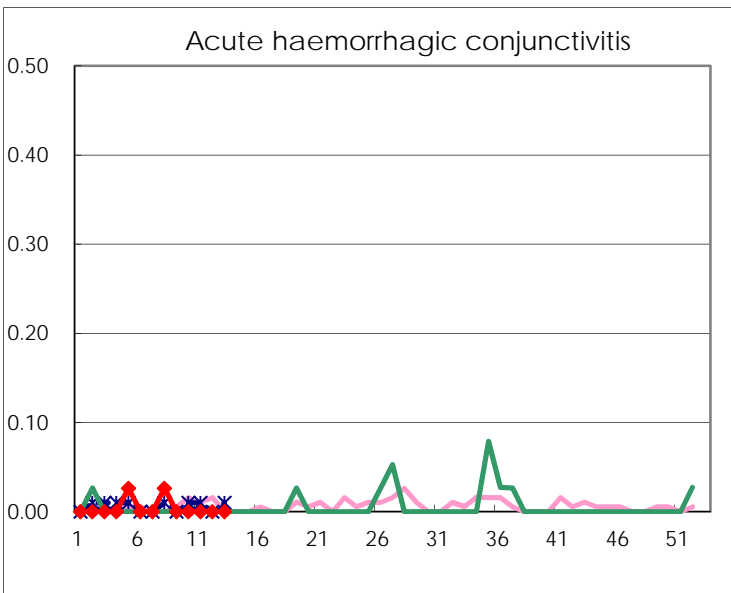
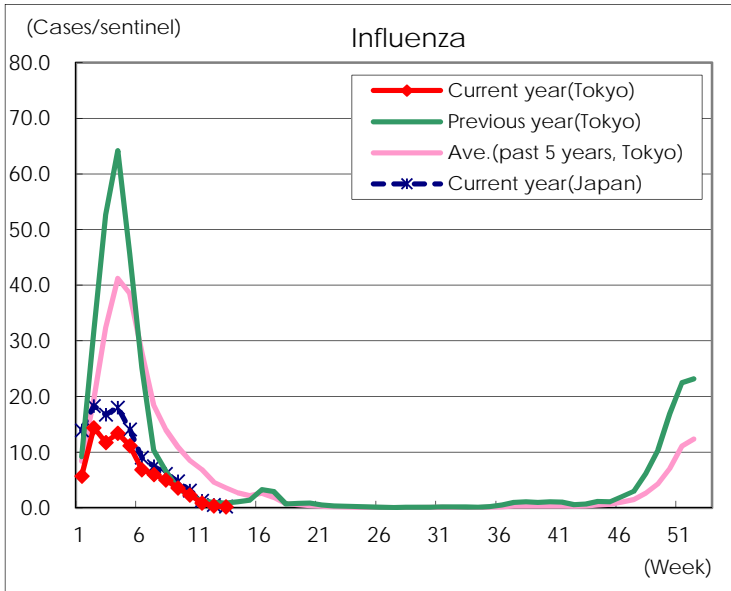
Diseases	Tokyo				
	10th	11th	12th	13th	/sentinel
Respiratory syncytial virus infection	47	42	15	8	0.03
Pharyngoconjunctival fever	62	39	36	34	0.13
Group A streptococcal pharyngitis	757	550	377	372	1.43
Infectious gastroenteritis	1,070	867	664	655	2.52
Chickenpox	96	102	62	67	0.26
Hand, foot, and mouth disease	14	20	8	10	0.04
Erythema infectiosum	17	23	16	20	0.08
Exanthem subitum	72	71	89	85	0.33
Herpangina	9	6	4	9	0.03
Mumps	16	9	15	16	0.06
Kawasaki disease		3	3	1	
Cold with exanths	13	12	8	13	0.05
Influenza	968	372	144	72	0.17
Acute hemorrhagic conjunctivitis					
Epidemic keratoconjunctivitis	4	8	9	7	0.18
Bacterial meningitis	1	1			
Aseptic meningitis		1	1		
Mycoplasma pneumonia	6	6	7	4	0.17
Chlamydial pneumonia (excluding psittacosis)	3			2	0.08
Infectious gastroenteritis (only by Rotavirus)					
Influenza-Associated Hospitalizations	2	1			

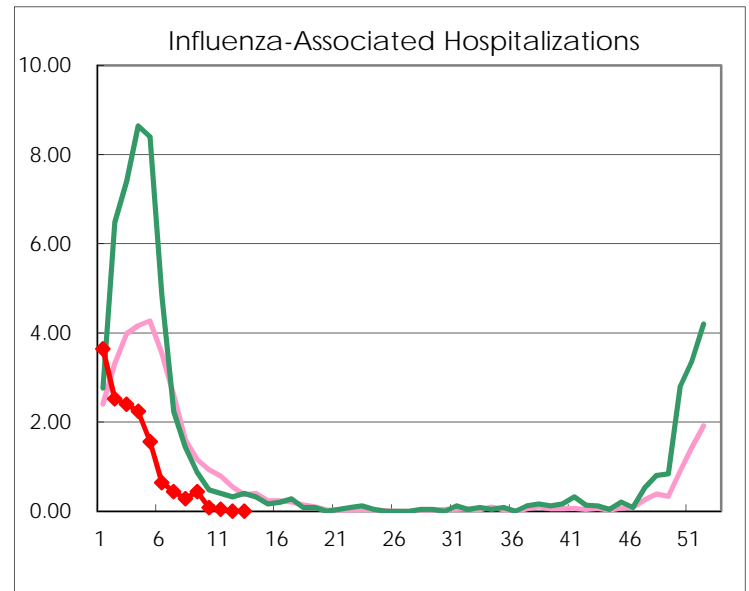
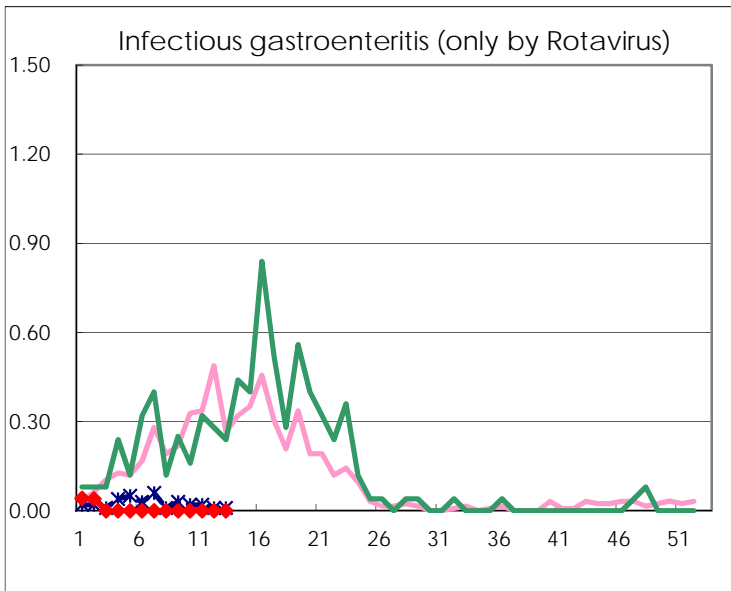
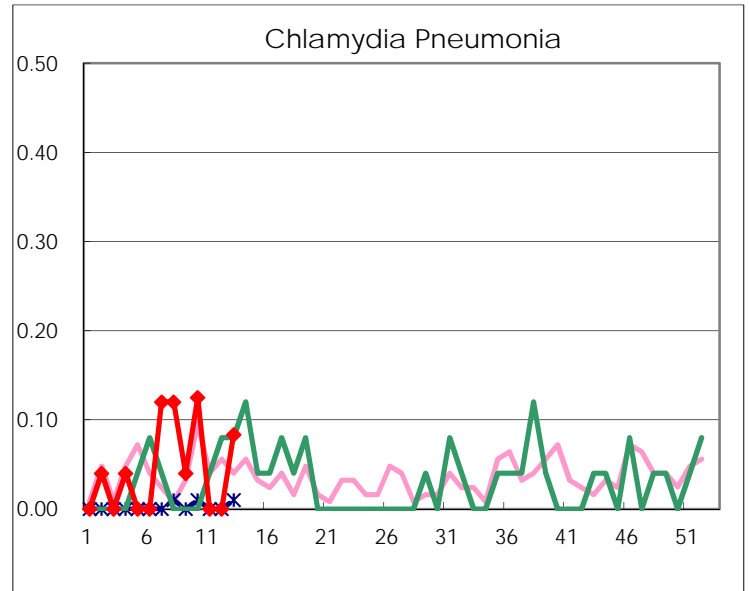
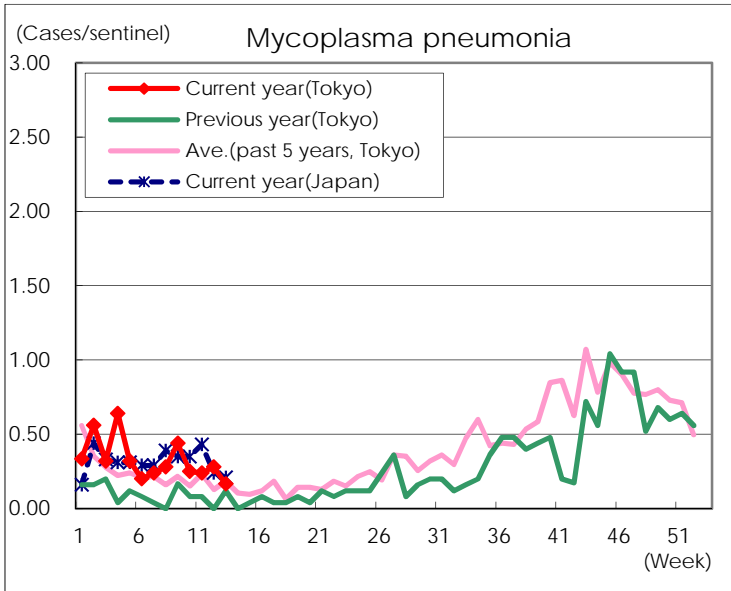
( Blank means 0. )

# Disease Trend Graph (weekly reported cases per sentinel in comparison)









Number of sentinel facilities for weekly reporting		
Types of sentinels	Number of sentinels	Sentinels having reported
Pediatric	264	260
Influenza	419	413
Ophthalmic	39	38
Specially-designated	25	24