

23 April 2020 / Number 16

(4/13 ~ 4/19)

Surveillance System in Tokyo, Japan

The infectious diseases which all physicians must report

All physicians must report to health centers the incidence of the diseases which are shown at page one. Health centers electronically report the individual cases to Tokyo Metropolitan Infectious Disease Surveillance Center.

The infectious diseases required to be reported by the sentinels

The numbers of patients who visit the sentinel clinics or hospitals during a week are reported to health centers in Tokyo. And they electronically report the numbers to Tokyo Metropolitan Infectious Disease Surveillance Center. We have about 500 sentinel clinics and hospitals in Tokyo.

Tokyo Metropolitan Institute of Public Health

TEL:81-3-3363-3213 FAX:81-3-5332-7365

e-mail:www@tokyo-eiken.go.jp

URL:idsc.tokyo-eiken.go.jp/

Number of patients with the diseases which all physicians must report

Category	Diseases	Tokyo					Japan	
		13th	14th	15th	16th	Cum 2020	16th	Cum 2020
I	Ebola hemorrhagic fever							
	Crimean-Congo hemorrhagic fever							
	Smallpox							
	South American hemorrhagic fever							
	Plague							
	Marburg disease							
	Lassa fever							
II	Acute poliomyelitis							
	Tuberculosis	49	36	37	37	744	210	5,027
	Diphtheria							
	Severe Acute Respiratory Syndrome(SARS)							
	Middle East Respiratory Syndrome (MERS)							
	Avian influenza H5N1							
	Avian influenza H7N9							
※	Novel Coronavirus 2019 infection	283	653	1,180	1,169	3,443	2,913	10,729
III	Cholera							
	Shigellosis				1	9	1	39
	Enterohemorrhagic Escherichia coli infection	1	3	1	3	36	22	308
	Typhoid fever					1	1	13
	Paratyphoid fever					1		6
IV	Hepatitis E	5	6	5	1	52	13	187
	West Nile fever							
	Hepatitis A				1	15	1	46
	Echinococcosis						1	7
	Yellow fever							
	Psittacosis							3
	Omsk hemorrhagic fever							
	Relapsing fever							
	Kyasanur forest disease							
	Q fever							
	Rabies							
	Coccidioidomycosis					1		1
	Monkeypox							
	Zika virus infection							1
	Severe Fever with Thrombocytopenia Syndrome							9
	Hemorrhagic fever with renal syndrome							
	Western equine encephalitis							
	Tick-borne encephalitis							
	Anthrax							
	Chikungunya fever							3
	Scrub typhus(Tsutsugamushi disease)				1	5	2	61
	Dengue fever		2			12		40
	Eastern equine encephalitis							
	Avian influenza (excluding H5N1 and H7N9)							
	Nipah virus infection							
	Japanese spotted fever						3	15
	Japanese encephalitis							1
	Hantavirus pulmonary syndrome							
	Herpes B virus infection							
	Glanders							
	Brucellosis							1
	Venezuelan equine encephalitis							
	Hendra virus infection							
	Epidemic typhus							
Botulism								
Malaria				1	4		10	
Tularemia								
Lyme disease							2	
Lyssavirus infection(excluding rabies)								
Rift valley fever								
Melioidosis								
Legionellosis	4		2	2	24	22	416	
Leptospirosis							1	
	Rocky mountain spotted fever							

Category	Diseases	Tokyo					Japan	
		13th	14th	15th	16th	Cum 2020	16th	Cum 2020
V	Amebiasis	3	4	4	1	43	10	188
	Viral hepatitis(excluding hepatitis A and E)	3		2	4	21	6	78
	CRE infection	3		4		34	7	428
	Acute Flaccid Paralysis (excluding Acute poliomyelitis)					1		9
	Acute encephalitis(excluding JE and WNE)				1	17	5	246
	Cryptosporidiosis							1
	Creutzfeldt-Jakob disease					3		35
	Severe invasive streptococcal infections(TSLS)	3	1	2	2	35	7	276
	Acquired immunodeficiency syndrome (AIDS)	11	1	5	3	94	6	274
	Giardiasis		1			3	1	13
	Invasive <i>Haemophilus influenzae</i> disease		1			14	2	125
	Invasive meningococcal disease					1		10
	Invasive pneumococcal disease	4	3	1	1	85	18	774
	Varicella (limited to hospitalized case)		1	1		20	2	115
	Congenital rubella syndrome							1
	Syphilis	26	16	13	9	375	45	1,571
	Disseminated cryptococcosis	3				4		33
	Tetanus					2	1	26
	Vancomycin-resistant <i>S. aureus</i> infection							
	Vancomycin-resistant Enterococcus infection		1			4	2	40
Pertussis	6	8	7	6	186	38	2,217	
Rubella					20	1	76	
Measles					2		10	
MDRA infection							2	

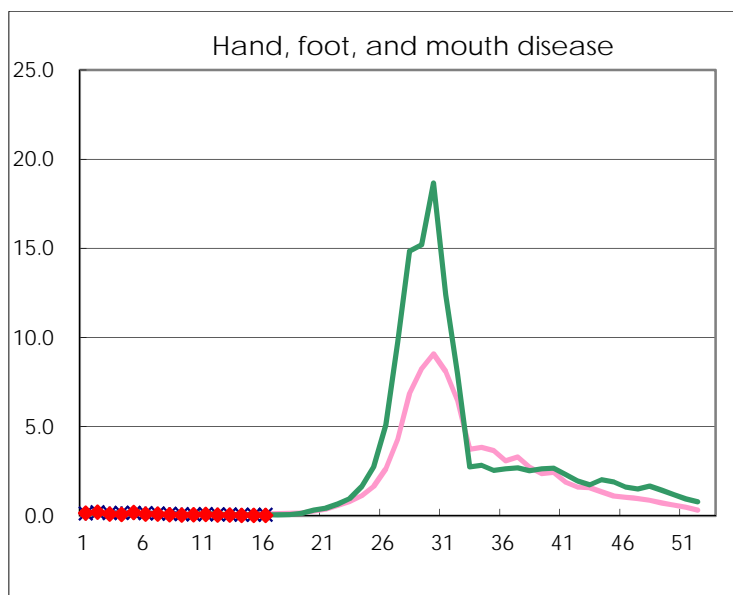
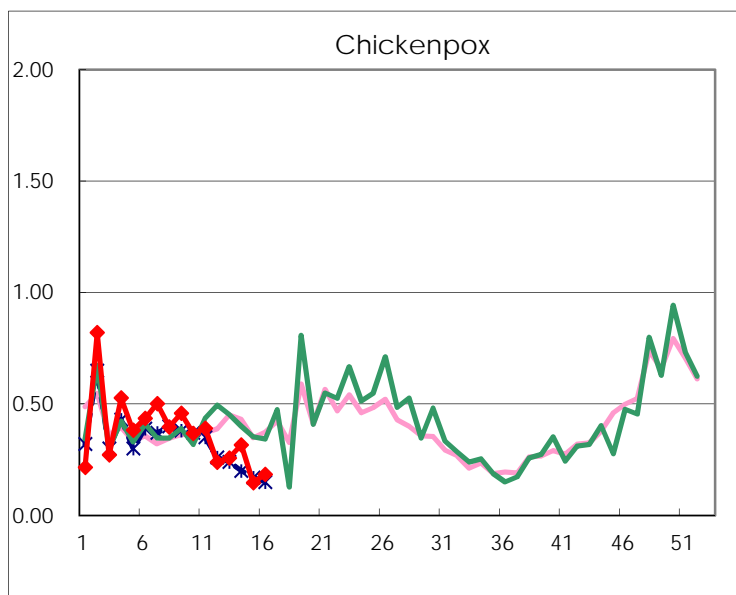
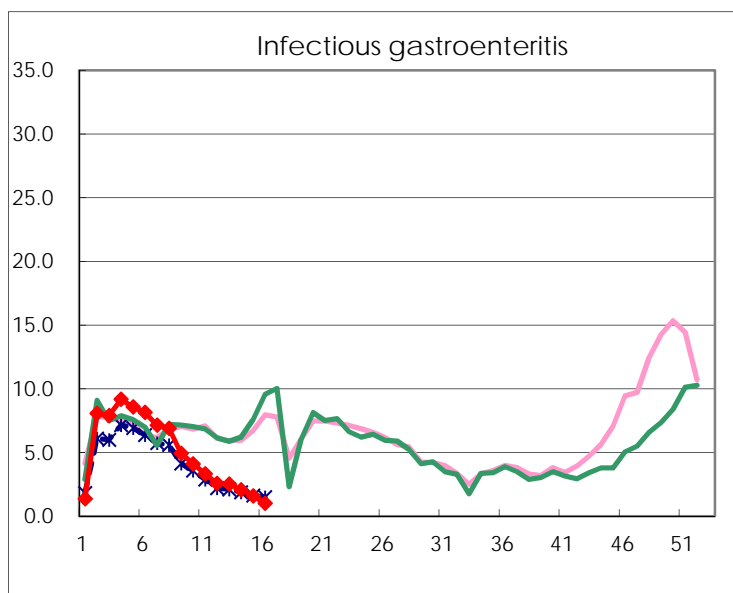
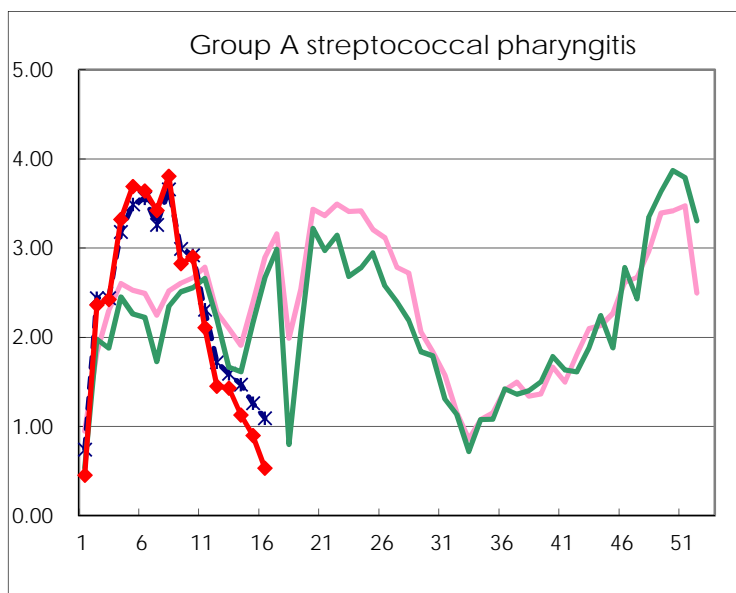
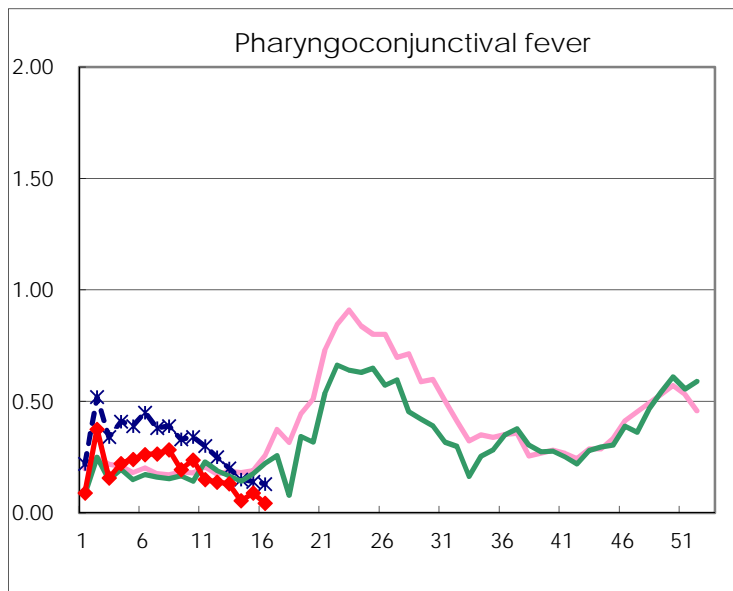
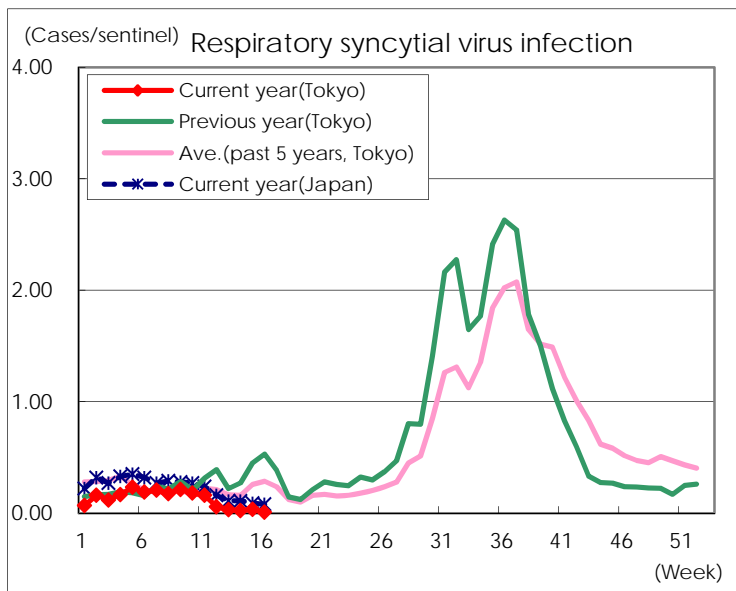
※ Designated infectious disease

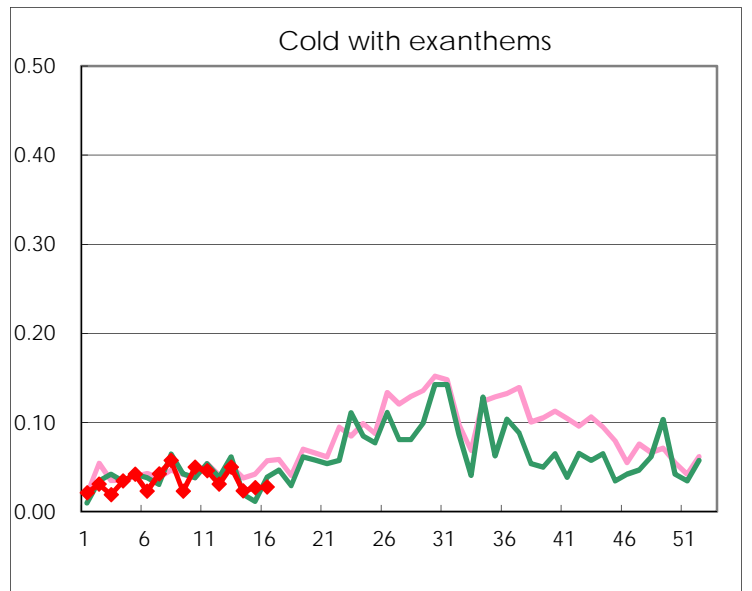
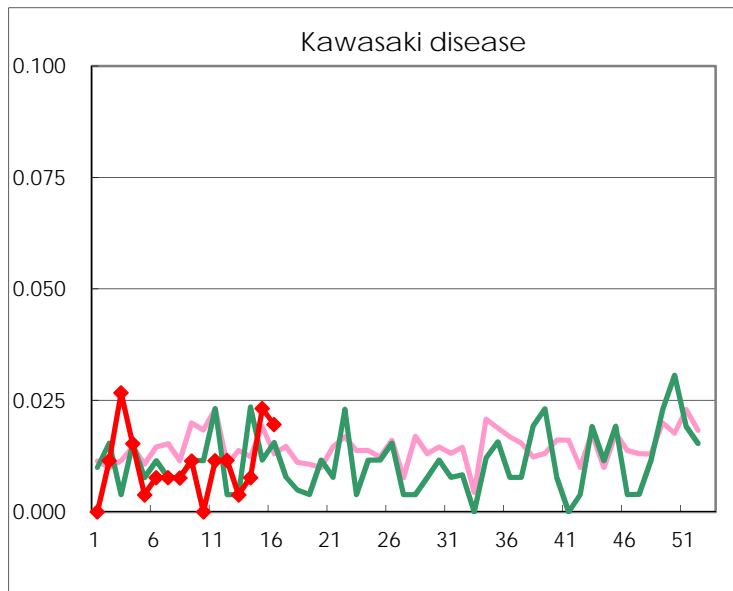
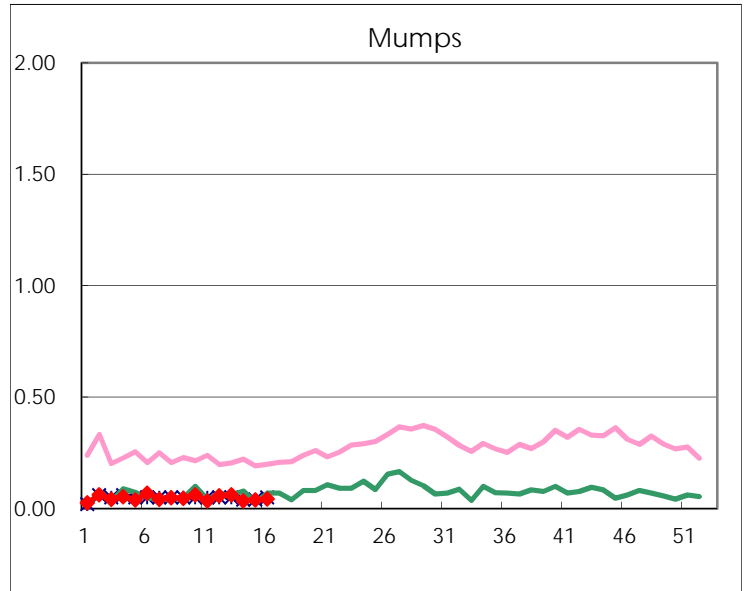
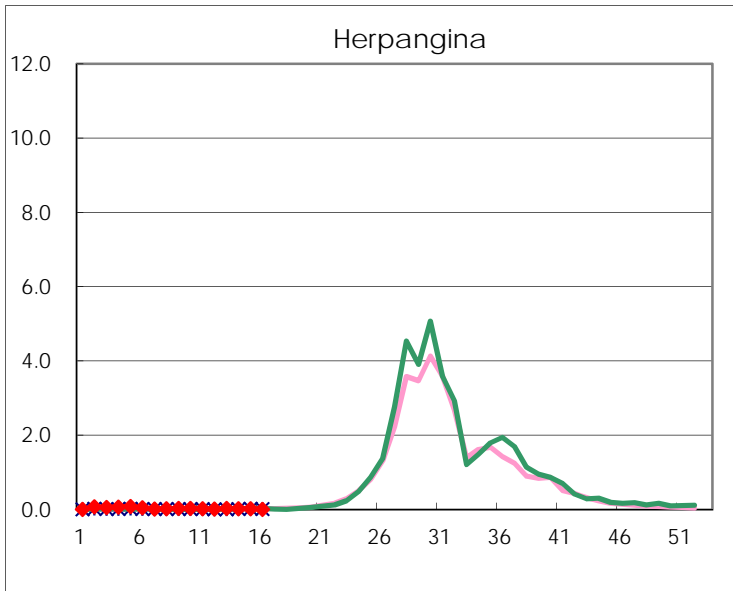
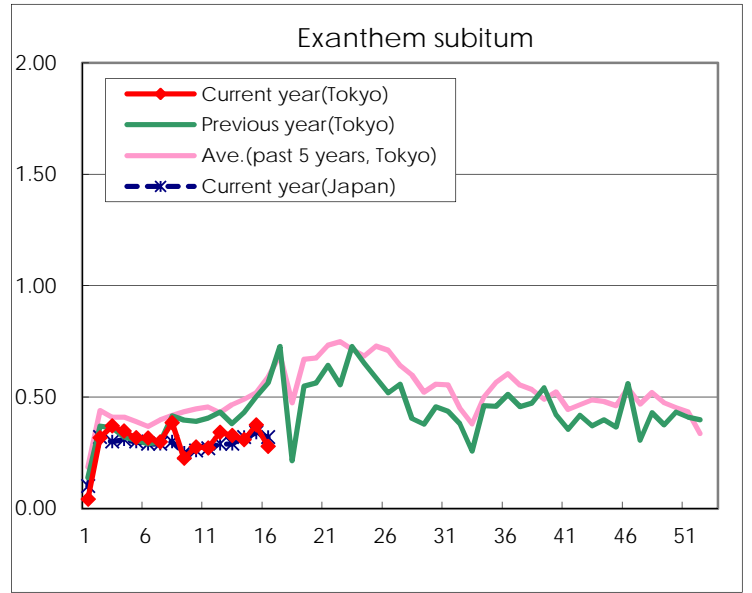
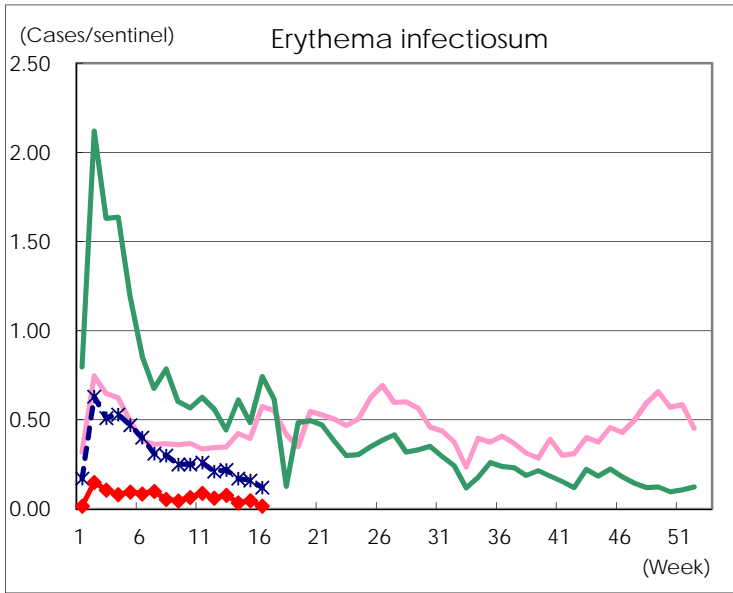
Number of patients with the diseases to be reported
by the designated clinics and hospitals

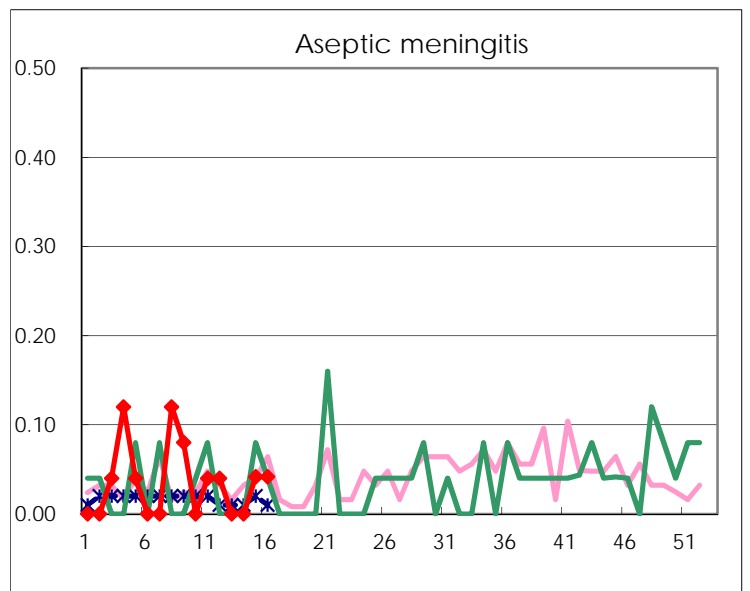
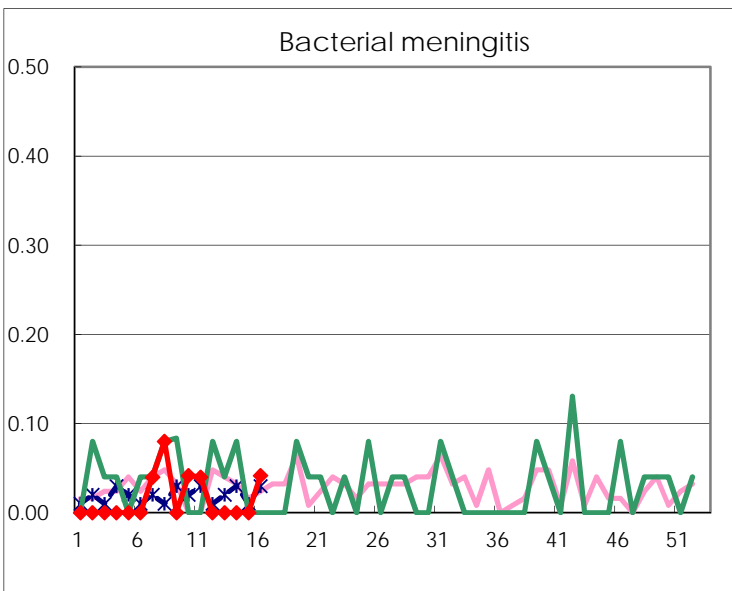
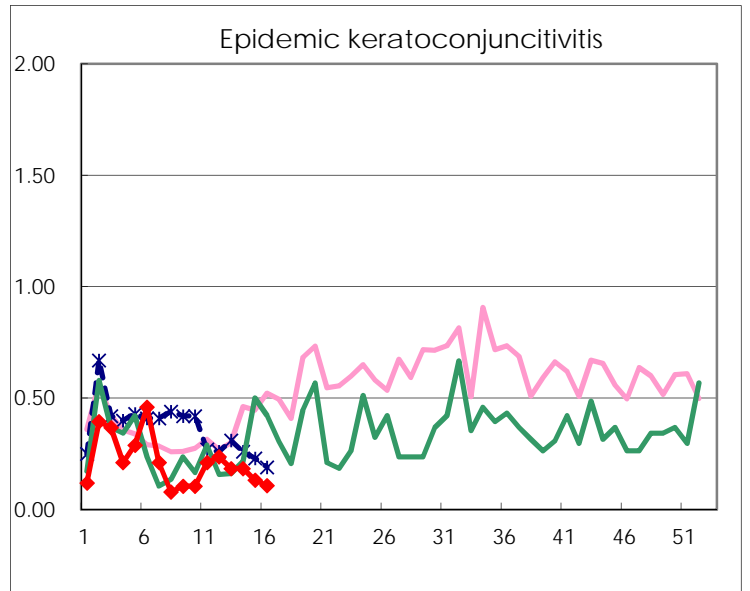
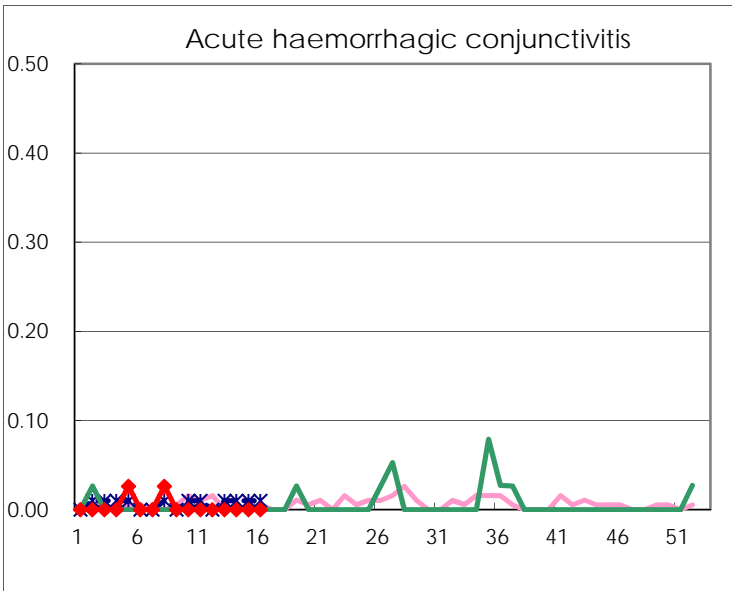
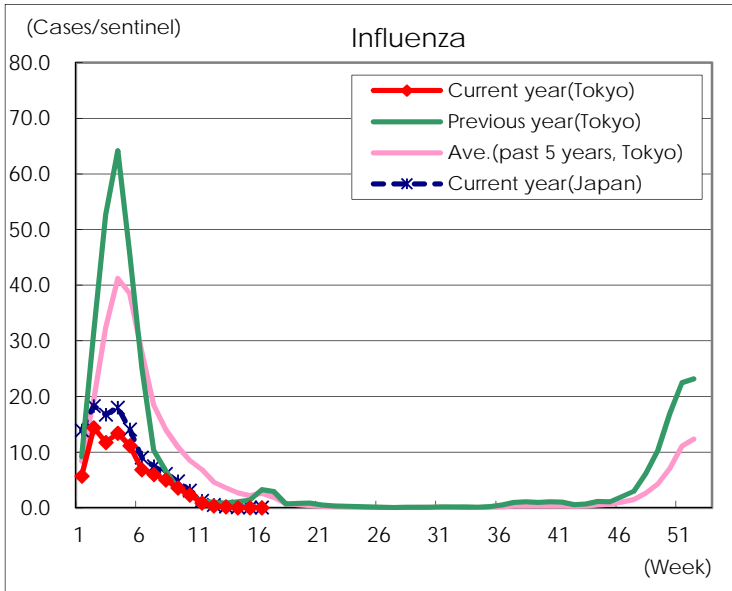
Diseases	Tokyo				
	13th	14th	15th	16th	/sentinel
Respiratory syncytial virus infection	8	6	9	2	0.01
Pharyngoconjunctival fever	34	14	23	11	0.04
Group A streptococcal pharyngitis	372	292	233	136	0.53
Infectious gastroenteritis	655	537	411	257	1.01
Chickenpox	67	82	38	47	0.18
Hand, foot, and mouth disease	10	7	7	7	0.03
Erythema infectiosum	20	9	12	4	0.02
Exanthem subitum	85	80	97	71	0.28
Herpangina	9	6	7	2	0.01
Mumps	16	9	10	11	0.04
Kawasaki disease	1	2	6	5	0.02
Cold with exanths	13	6	7	7	0.03
Influenza	73	13	14		
Acute hemorrhagic conjunctivitis					
Epidemic keratoconjunctivitis	7	7	5	4	0.11
Bacterial meningitis				1	0.04
Aseptic meningitis			1	1	0.04
Mycoplasma pneumonia	4	6	6	5	0.21
Chlamydial pneumonia (excluding psittacosis)	2	1		2	0.08
Infectious gastroenteritis (only by Rotavirus)					
Influenza-Associated Hospitalizations					

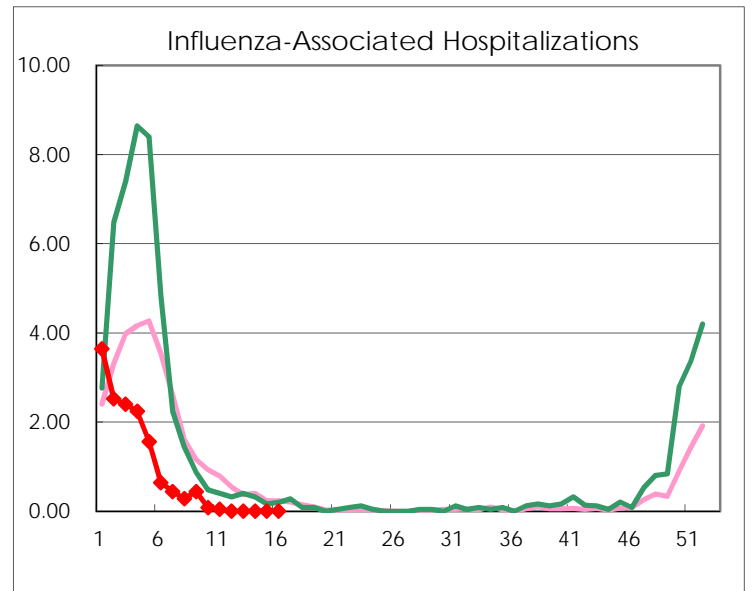
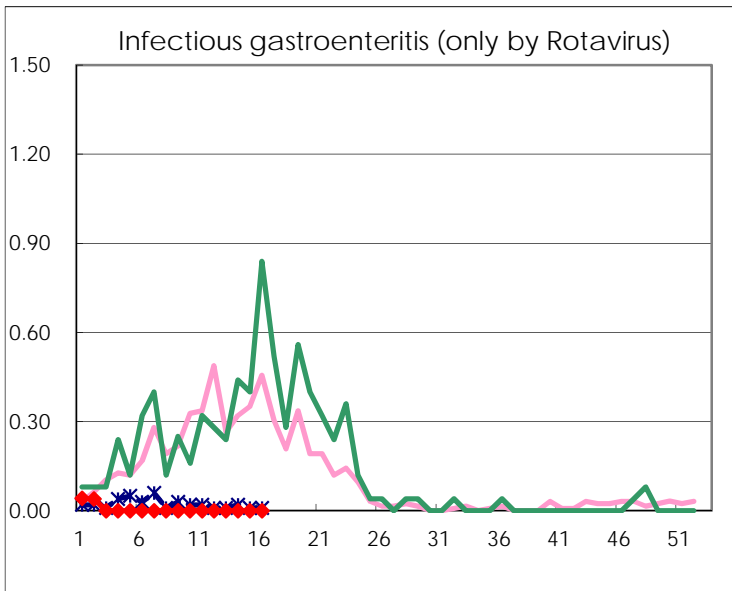
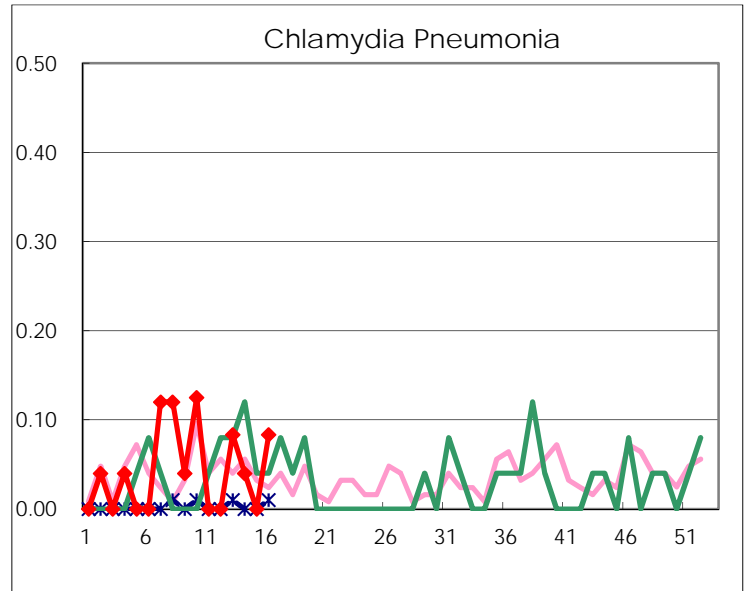
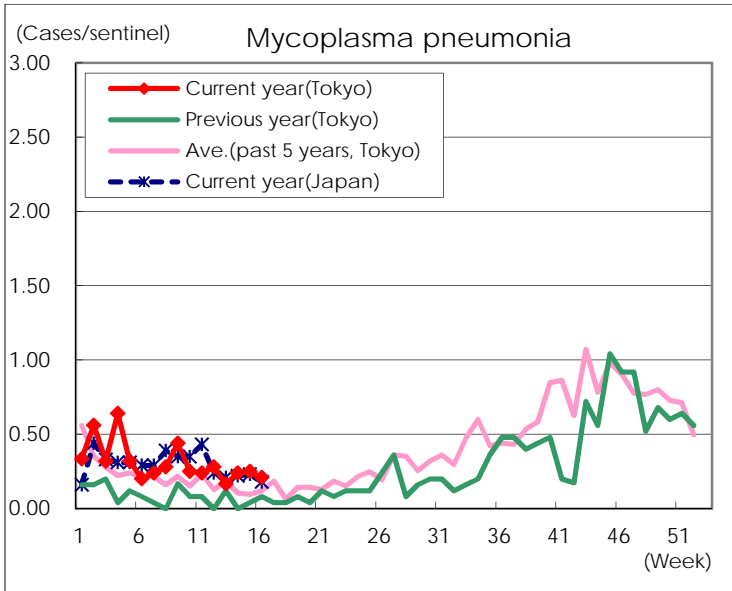
(Blank means 0.)

Disease Trend Graph (weekly reported cases per sentinel in comparison)









Number of sentinel facilities for weekly reporting		
Types of sentinels	Number of sentinels	Sentinels having reported
Pediatric	264	255
Influenza	419	407
Ophthalmic	39	37
Specially-designated	25	24