

**1 May 2020 / Number 17**  
**( 4/20 ~ 4/26 )**

## Surveillance System in Tokyo, Japan

The infectious diseases which all physicians must report

All physicians must report to health centers the incidence of the diseases which are shown at page one. Health centers electronically report the individual cases to Tokyo Metropolitan Infectious Disease Surveillance Center.

The infectious diseases required to be reported by the sentinels

The numbers of patients who visit the sentinel clinics or hospitals during a week are reported to health centers in Tokyo. And they electronically report the numbers to Tokyo Metropolitan Infectious Disease Surveillance Center. We have about 500 sentinel clinics and hospitals in Tokyo.

Tokyo Metropolitan Institute of Public Health

TEL:81-3-3363-3213 FAX:81-3-5332-7365

e-mail:[www@tokyo-eiken.go.jp](mailto:www@tokyo-eiken.go.jp)

URL:[idsc.tokyo-eiken.go.jp/](http://idsc.tokyo-eiken.go.jp/)

---

Number of patients with the diseases which all physicians must report

Category	Diseases	Tokyo					Japan	
		14th	15th	16th	17th	Cum 2020	17th	Cum 2020
I	Ebola hemorrhagic fever							
	Crimean-Congo hemorrhagic fever							
	Smallpox							
	South American hemorrhagic fever							
	Plague							
	Marburg disease							
	Lassa fever							
II	Acute poliomyelitis							
	Tuberculosis	36	40	41	39	791	225	5,339
	Diphtheria							
	Severe Acute Respiratory Syndrome(SARS)							
	Middle East Respiratory Syndrome (MERS)							
	Avian influenza H5N1							
	Avian influenza H7N9							
※	Novel Coronavirus 2019 infection	659	1,181	1,203	743	4,229	1,965	12,976
III	Cholera							
	Shigellosis			1		9		39
	Enterohemorrhagic Escherichia coli infection	3	1	3	1	37	13	324
	Typhoid fever					1		15
	Paratyphoid fever					1		6
IV	Hepatitis E	6	5	2		53	3	190
	West Nile fever							
	Hepatitis A			1		15	1	47
	Echinococcosis							7
	Yellow fever							
	Psittacosis							3
	Omsk hemorrhagic fever							
	Relapsing fever							
	Kyasanur forest disease							
	Q fever							
	Rabies							
	Coccidioidomycosis					1		2
	Monkeypox							
	Zika virus infection							1
	Severe Fever with Thrombocytopenia Syndrome						1	11
	Hemorrhagic fever with renal syndrome							
	Western equine encephalitis							
	Tick-borne encephalitis							
	Anthrax							
	Chikungunya fever							3
	Scrub typhus(Tsutsugamushi disease)			1		5	3	64
	Dengue fever	2				12		40
	Eastern equine encephalitis							
	Avian influenza (excluding H5N1 and H7N9)							
	Nipah virus infection							
	Japanese spotted fever						1	18
	Japanese encephalitis							1
	Hantavirus pulmonary syndrome							
	Herpes B virus infection							
	Glanders							
	Brucellosis							1
	Venezuelan equine encephalitis							
	Hendra virus infection							
Epidemic typhus								
Botulism								
Malaria			1		4		11	
Tularemia								
Lyme disease							2	
Lyssavirus infection(excluding rabies)								
Rift valley fever								
Melioidosis								
Legionellosis	1	2	2	1	26	10	434	
Leptospirosis							1	
Rocky mountain spotted fever								

Category	Diseases	Tokyo					Japan	
		14th	15th	16th	17th	Cum 2020	17th	Cum 2020
V	Amebiasis	4	4	1	1	44	5	201
	Viral hepatitis(excluding hepatitis A and E)	1	2	5		23	1	85
	CRE infection		4	1	1	36	19	462
	Acute Flaccid Paralysis (excluding Acute poliomyelitis)					1	1	10
	Acute encephalitis(excluding JE and WNE)			1		17	2	256
	Cryptosporidiosis							1
	Creutzfeldt-Jakob disease					3	1	37
	Severe invasive streptococcal infections(TSLS)	1	2	2	1	36	5	287
	Acquired immunodeficiency syndrome (AIDS)	1	5	3	4	98	5	286
	Giardiasis	1				3		13
	Invasive <i>Haemophilus influenzae</i> disease	1				14		126
	Invasive meningococcal disease					1		9
	Invasive pneumococcal disease	5	1	1	3	91	9	796
	Varicella (limited to hospitalized case)	1	1		1	21	8	125
	Congenital rubella syndrome							1
	Syphilis	18	14	11	18	399	51	1,685
	Disseminated cryptococcosis				1	5	2	35
	Tetanus					2	2	29
	Vancomycin-resistant <i>S. aureus</i> infection							
	Vancomycin-resistant Enterococcus infection	1				4	1	41
Pertussis	8	7	6	7	195	29	2,281	
Rubella					20		75	
Measles					2		9	
MDRA infection							3	

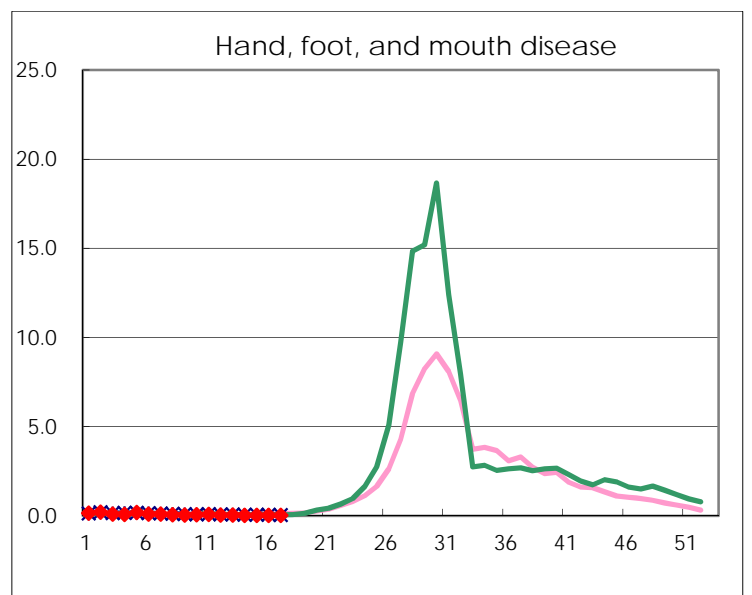
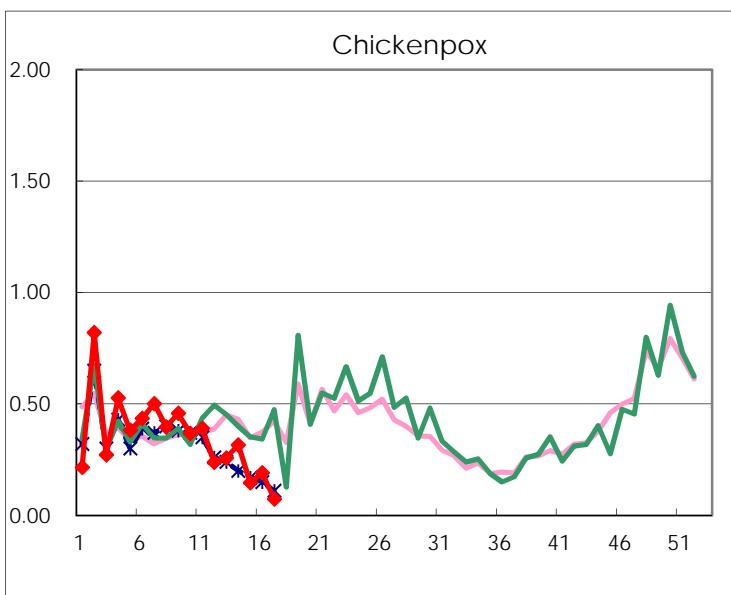
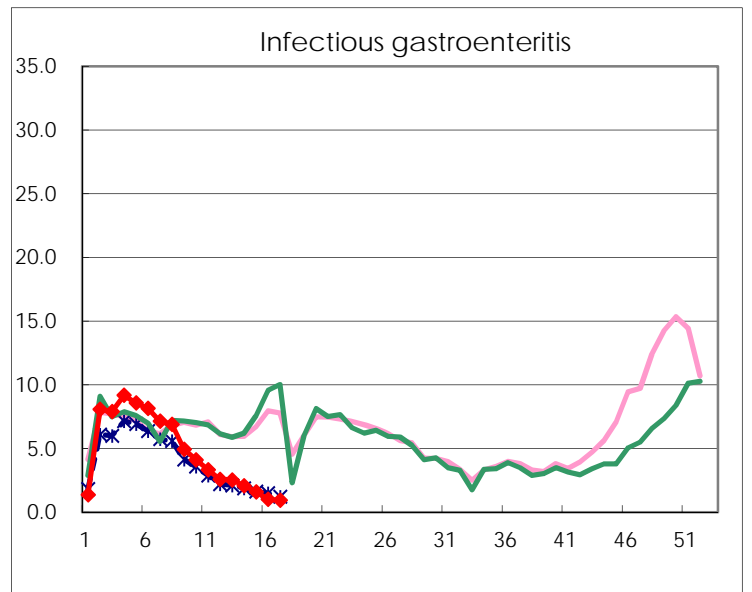
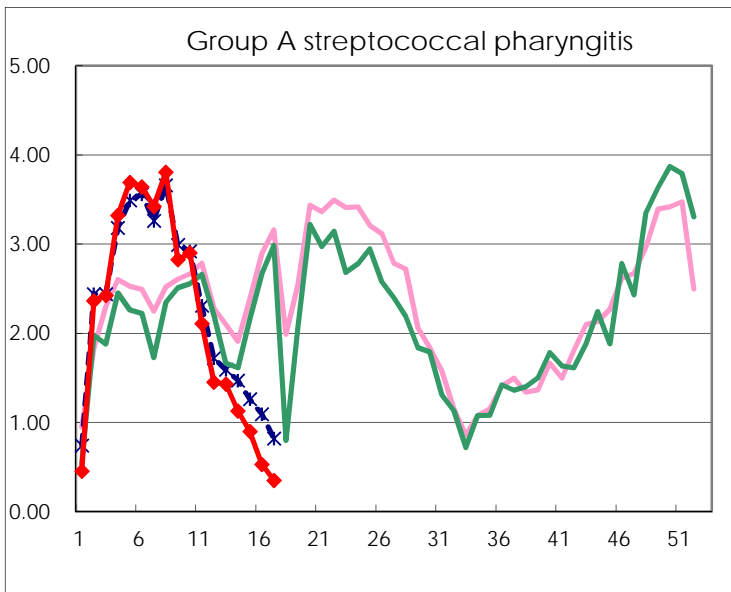
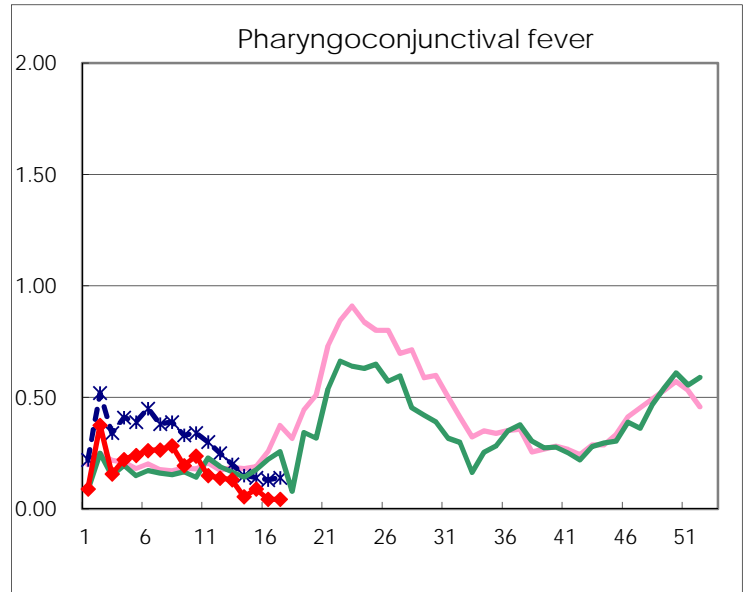
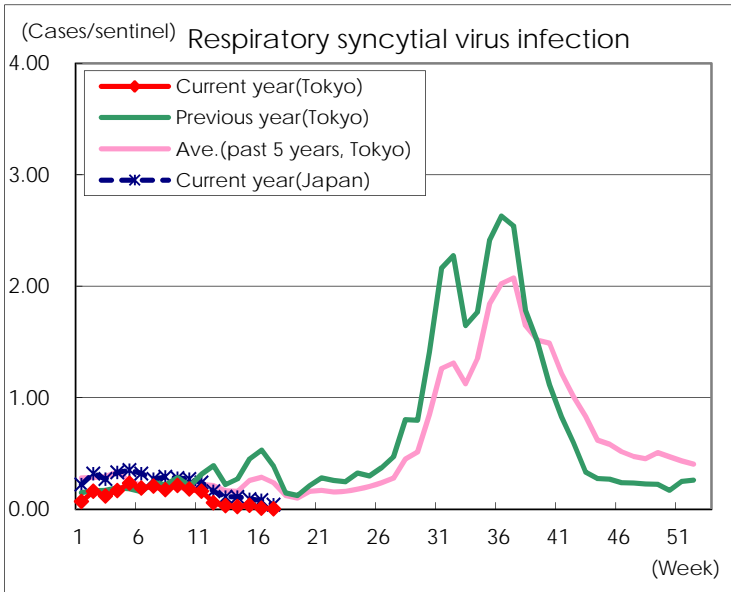
※ Designated infectious disease

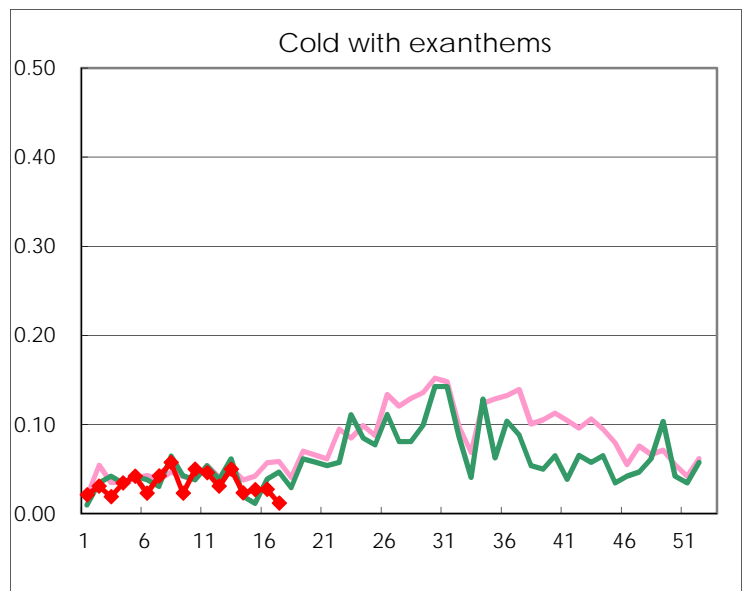
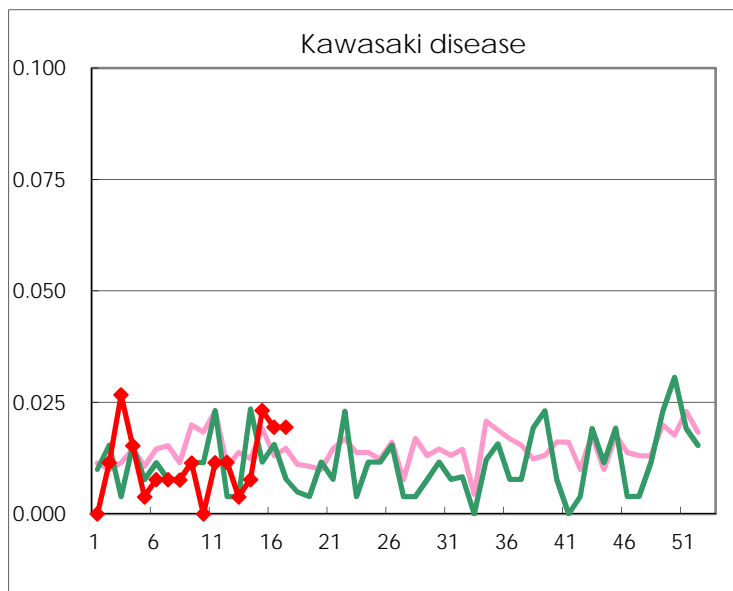
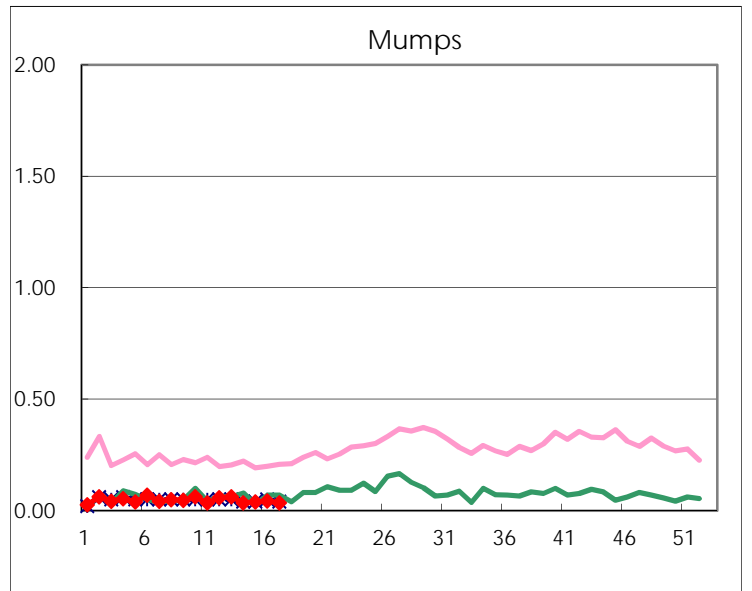
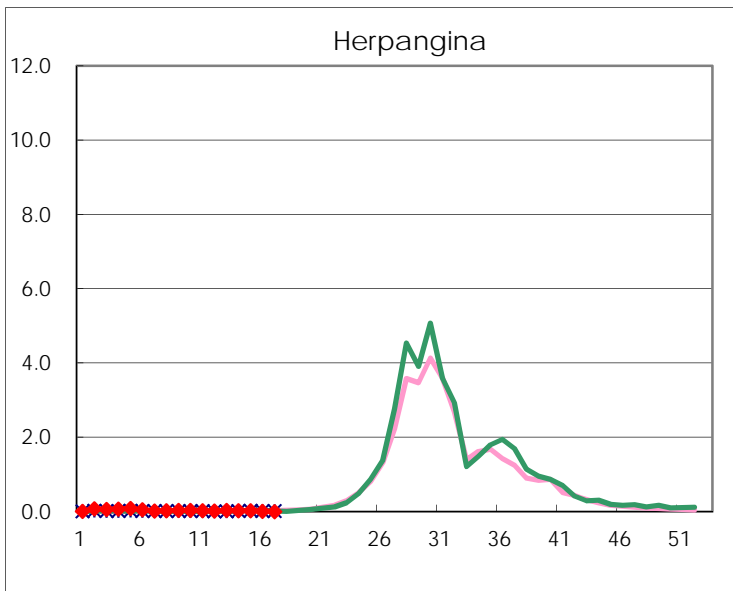
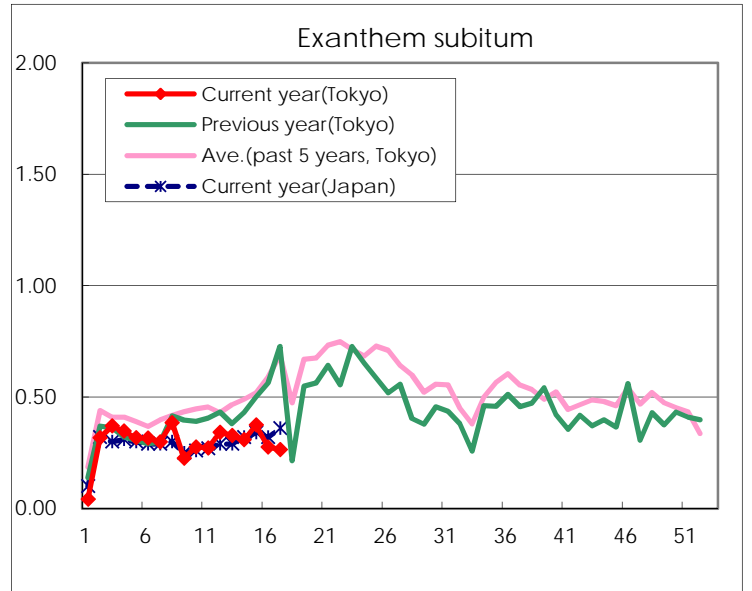
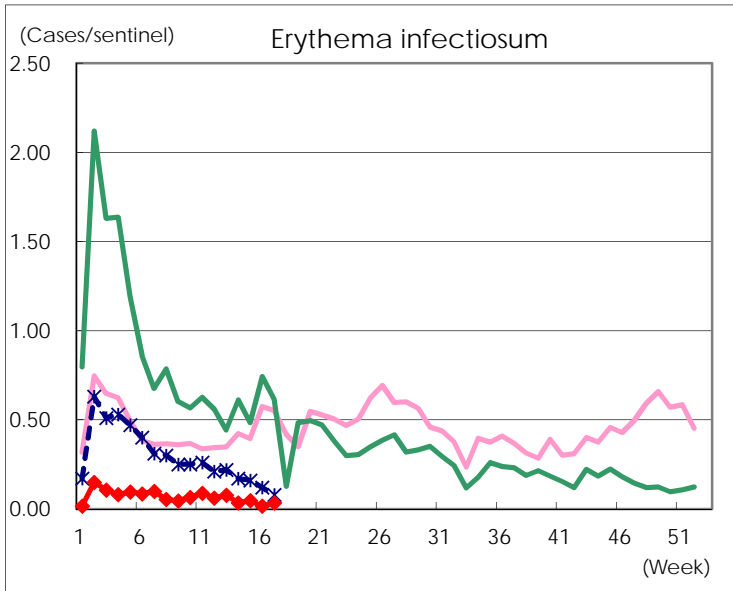
Number of patients with the diseases to be reported  
by the designated clinics and hospitals

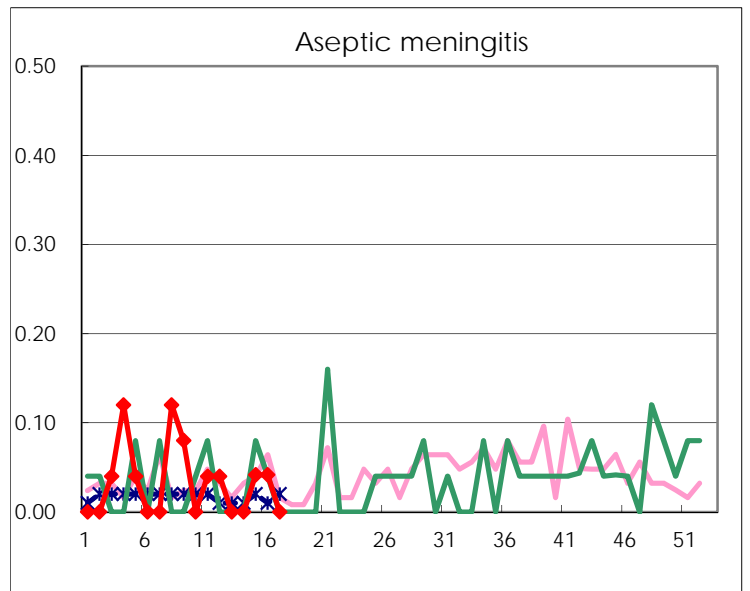
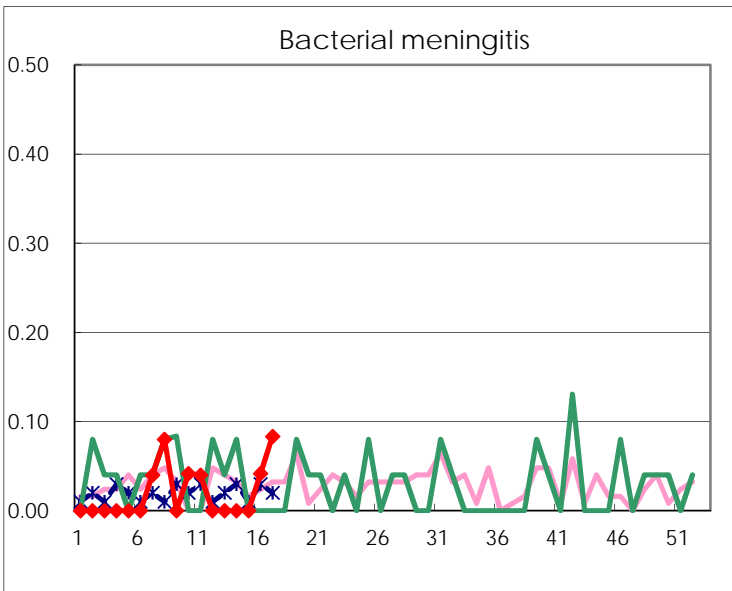
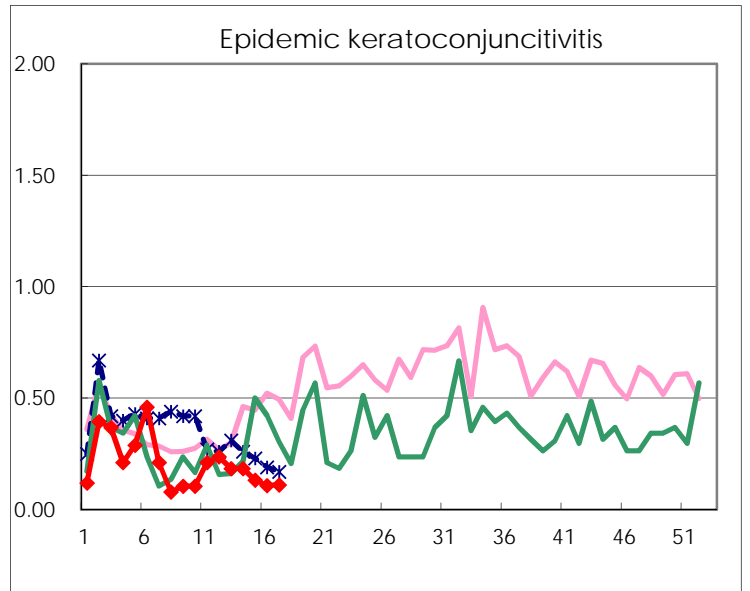
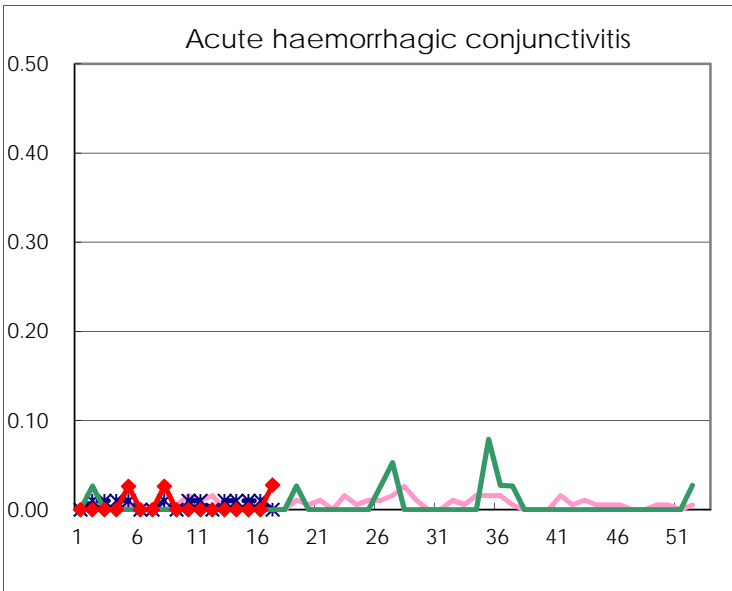
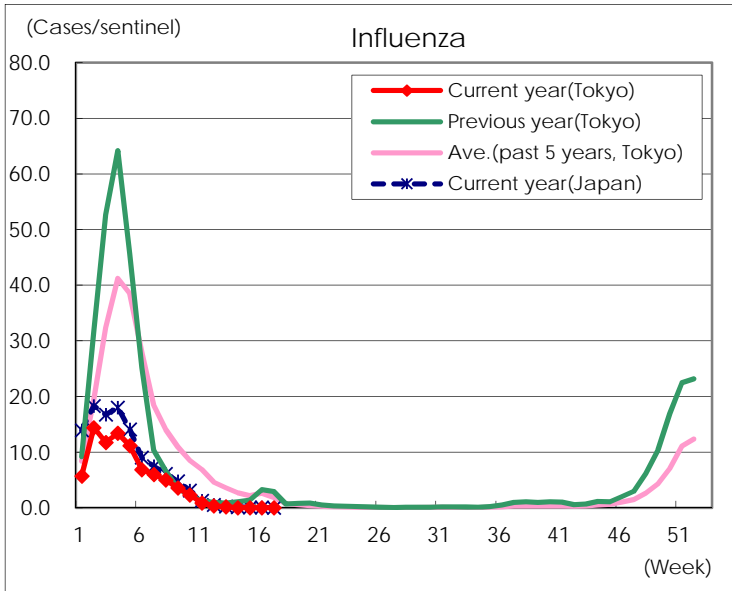
Diseases	Tokyo				
	14th	15th	16th	17th	/sentinel
Respiratory syncytial virus infection	6	9	2	1	
Pharyngoconjunctival fever	14	23	11	11	0.04
Group A streptococcal pharyngitis	292	233	136	90	0.35
Infectious gastroenteritis	537	411	257	238	0.93
Chickenpox	82	38	49	19	0.07
Hand, foot, and mouth disease	7	7	7	7	0.03
Erythema infectiosum	9	12	4	9	0.04
Exanthem subitum	80	97	71	68	0.26
Herpangina	6	7	3	1	
Mumps	9	10	11	9	0.04
Kawasaki disease	2	6	5	5	0.02
Cold with exanths	6	7	7	3	0.01
Influenza	13	14		2	
Acute hemorrhagic conjunctivitis				1	0.03
Epidemic keratoconjunctivitis	7	5	4	4	0.11
Bacterial meningitis			1	2	0.08
Aseptic meningitis		1	1		
Mycoplasma pneumonia	6	6	5	5	0.21
Chlamydial pneumonia (excluding psittacosis)	1		2		
Infectious gastroenteritis (only by Rotavirus)					
Influenza-Associated Hospitalizations					

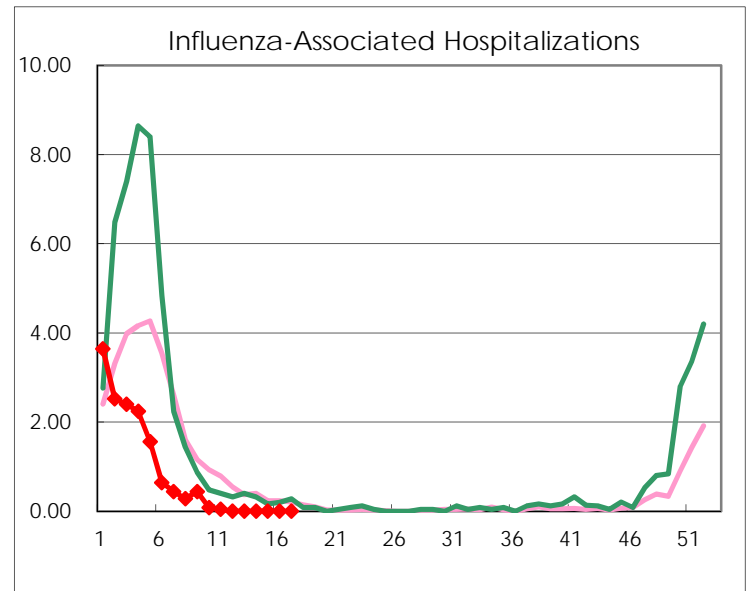
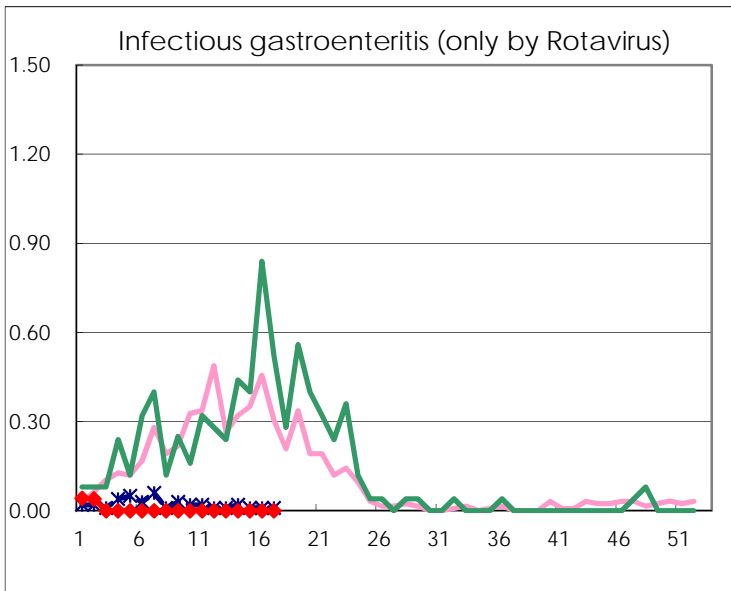
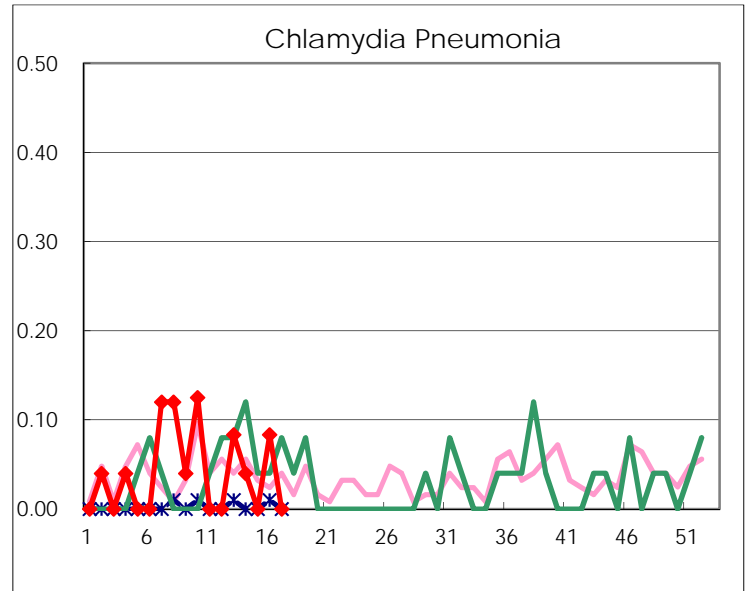
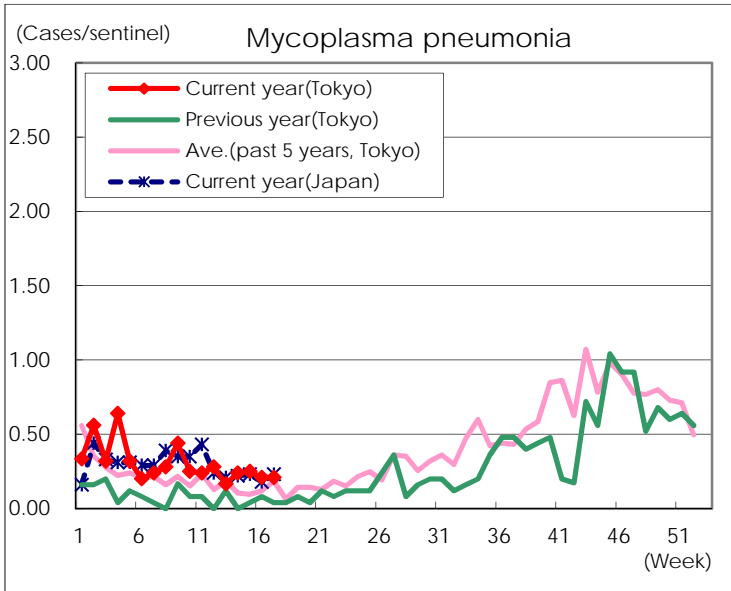
( Blank means 0. )

# Disease Trend Graph (weekly reported cases per sentinel in comparison)









Number of sentinel facilities for weekly reporting		
Types of sentinels	Number of sentinels	Sentinels having reported
Pediatric	264	257
Influenza	419	410
Ophthalmic	39	36
Specially-designated	25	24