

**14 May 2020 / Number 19**  
**( 5/4 ~ 5/10 )**

## Surveillance System in Tokyo, Japan

The infectious diseases which all physicians must report

All physicians must report to health centers the incidence of the diseases which are shown at page one. Health centers electronically report the individual cases to Tokyo Metropolitan Infectious Disease Surveillance Center.

The infectious diseases required to be reported by the sentinels

The numbers of patients who visit the sentinel clinics or hospitals during a week are reported to health centers in Tokyo. And they electronically report the numbers to Tokyo Metropolitan Infectious Disease Surveillance Center. We have about 500 sentinel clinics and hospitals in Tokyo.

Tokyo Metropolitan Institute of Public Health

TEL:81-3-3363-3213 FAX:81-3-5332-7365

e-mail:[www@tokyo-eiken.go.jp](mailto:www@tokyo-eiken.go.jp)

URL:[idsc.tokyo-eiken.go.jp/](http://idsc.tokyo-eiken.go.jp/)

---

Number of patients with the diseases which all physicians must report

Category	Diseases	Tokyo					Japan	
		16th	17th	18th	19th	Cum 2020	19th	Cum 2020
I	Ebola hemorrhagic fever							
	Crimean-Congo hemorrhagic fever							
	Smallpox							
	South American hemorrhagic fever							
	Plague							
	Marburg disease							
	Lassa fever							
II	Acute poliomyelitis							
	Tuberculosis	46	48	35	24	867	124	5,865
	Diphtheria							
	Severe Acute Respiratory Syndrome(SARS)							
	Middle East Respiratory Syndrome (MERS)							
	Avian influenza H5N1							
	Avian influenza H7N9							
※	Novel Coronavirus 2019 infection	1,214	758	533	211	5,086	507	15,333
III	Cholera							
	Shigellosis	1				9		39
	Enterohemorrhagic Escherichia coli infection	3	1	3		40	1	348
	Typhoid fever					1		16
	Paratyphoid fever					1	1	7
IV	Hepatitis E	2		2		55	1	199
	West Nile fever							
	Hepatitis A	1				15		50
	Echinococcosis							7
	Yellow fever							
	Psittacosis							3
	Omsk hemorrhagic fever							
	Relapsing fever							
	Kyasanur forest disease							
	Q fever							
	Rabies							
	Coccidioidomycosis					1		2
	Monkeypox							
	Zika virus infection							1
	Severe Fever with Thrombocytopenia Syndrome						3	17
	Hemorrhagic fever with renal syndrome							
	Western equine encephalitis							
	Tick-borne encephalitis							
	Anthrax							
	Chikungunya fever							3
	Scrub typhus(Tsutsugamushi disease)	1				5	1	67
	Dengue fever					12		40
	Eastern equine encephalitis							
	Avian influenza (excluding H5N1 and H7N9)							
	Nipah virus infection							
	Japanese spotted fever						5	31
	Japanese encephalitis							1
	Hantavirus pulmonary syndrome							
	Herpes B virus infection							
	Glanders							
	Brucellosis							1
	Venezuelan equine encephalitis							
	Hendra virus infection							
	Epidemic typhus							
	Botulism							
	Malaria	1			1	5	1	12
	Tularemia							
	Lyme disease							2
	Lyssavirus infection(excluding rabies)							
	Rift valley fever							
Melioidosis								
Legionellosis	2	1			26	12	469	
Leptospirosis							1	
Rocky mountain spotted fever								

Category	Diseases	Tokyo					Japan	
		16th	17th	18th	19th	Cum 2020	19th	Cum 2020
V	Amebiasis	1	1	1		45	2	216
	Viral hepatitis(excluding hepatitis A and E)	5		1		24	1	93
	CRE infection	1	1		3	39	10	511
	Acute Flaccid Paralysis (excluding Acute poliomyelitis)					1	2	12
	Acute encephalitis(excluding JE and WNE)	1				17	1	260
	Cryptosporidiosis							1
	Creutzfeldt-Jakob disease					3	1	42
	Severe invasive streptococcal infections(TSLS)	2	1	1		37	6	304
	Acquired immunodeficiency syndrome (AIDS)	5	4	6	2	115	3	321
	Giardiasis					3		13
	Invasive <i>Haemophilus influenzae</i> disease			1		15	1	132
	Invasive meningococcal disease					1		11
	Invasive pneumococcal disease	1	3	2	2	95	11	839
	Varicella (limited to hospitalized case)		1		1	22	3	133
	Congenital rubella syndrome							1
	Syphilis	17	18	10	7	456	21	1,865
	Disseminated cryptococcosis		1			5	1	40
	Tetanus			1		3		30
	Vancomycin-resistant <i>S. aureus</i> infection							
	Vancomycin-resistant Enterococcus infection					4	3	45
Pertussis	6	7	3	2	200	11	2,340	
Rubella					20	1	76	
Measles					2		9	
MDRA infection							2	

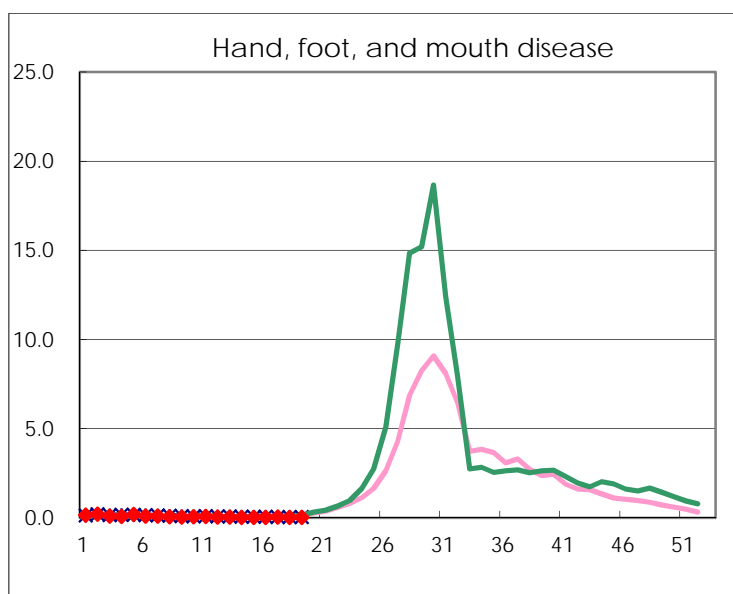
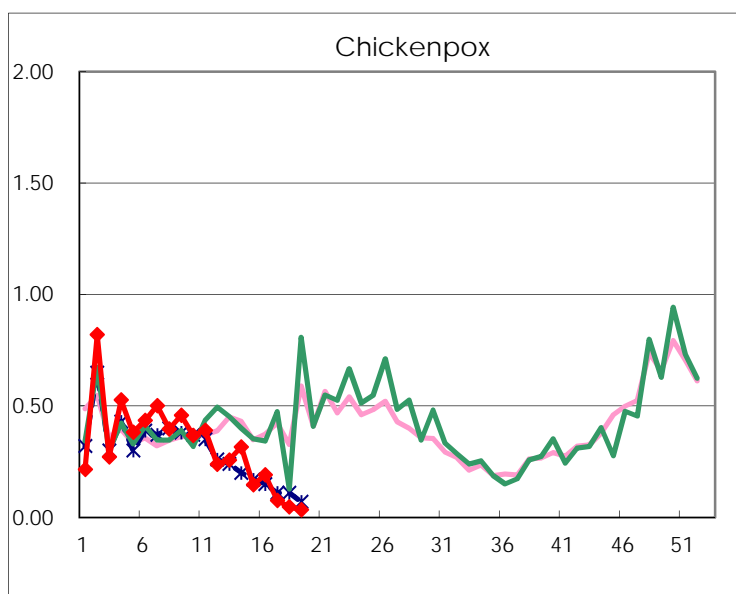
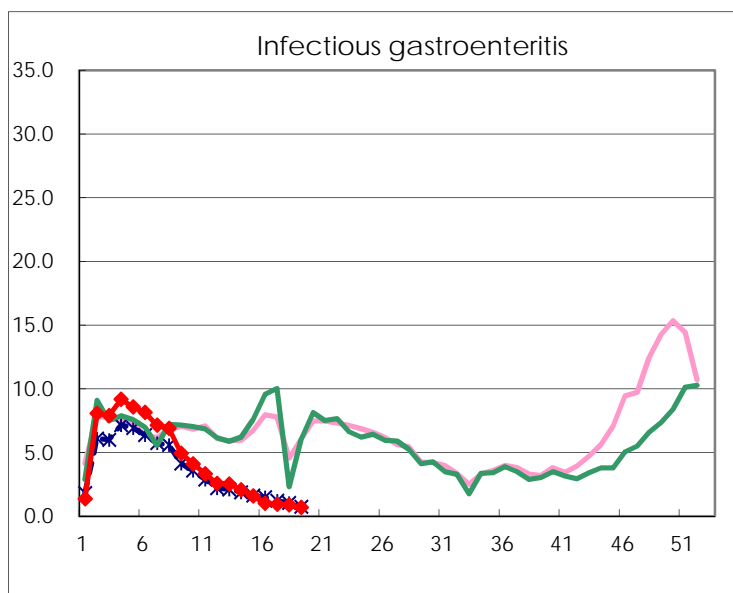
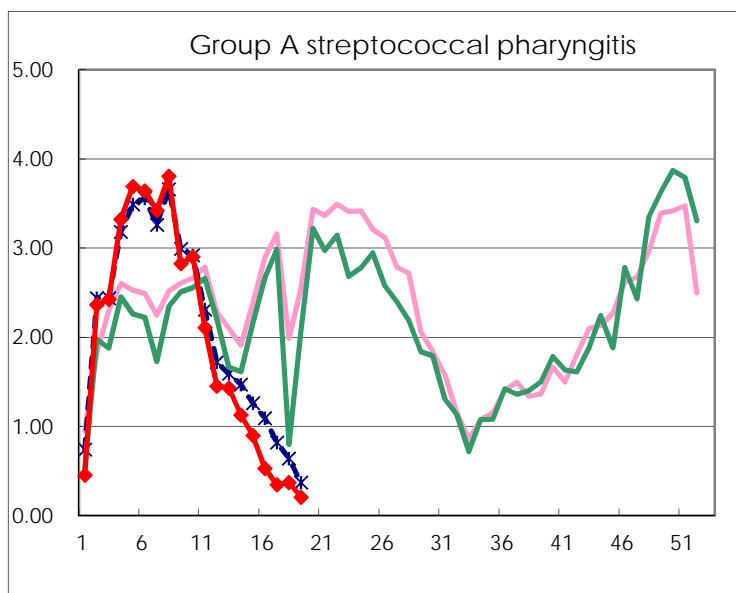
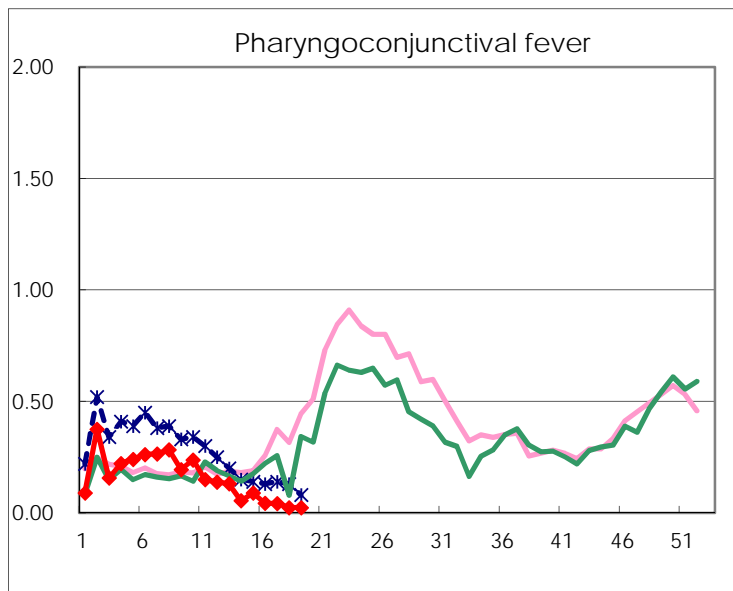
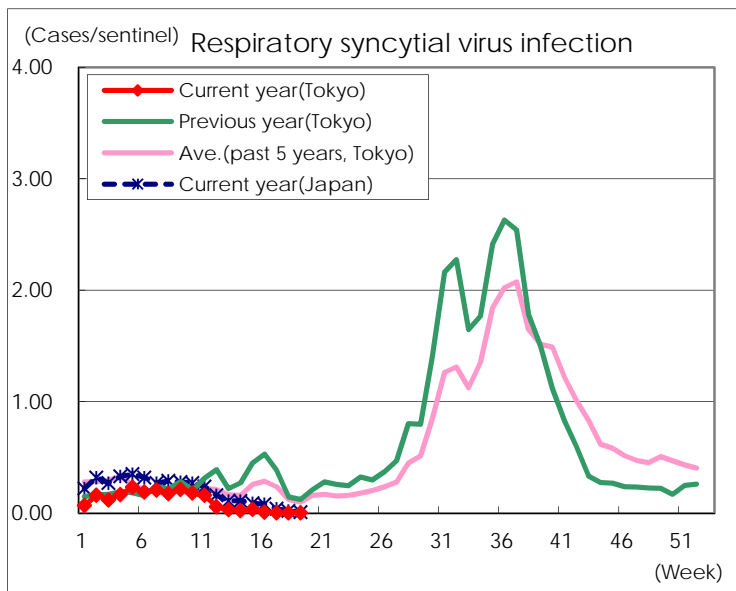
※ Designated infectious disease

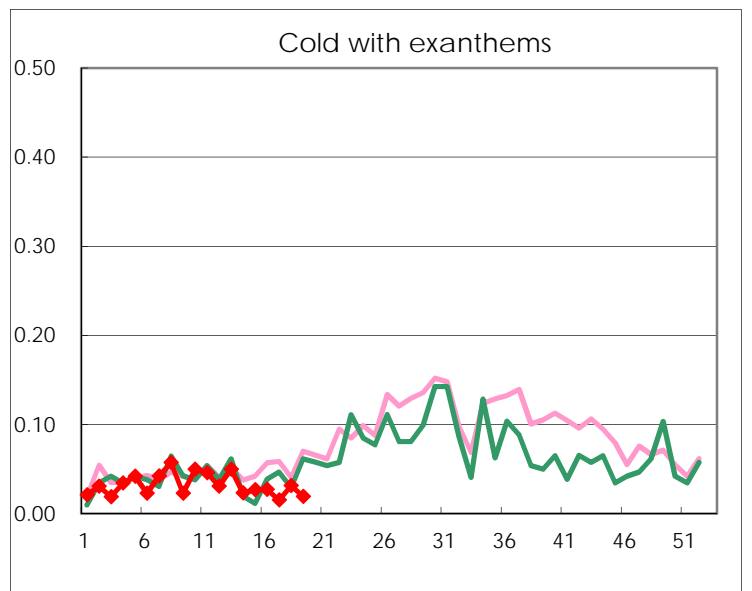
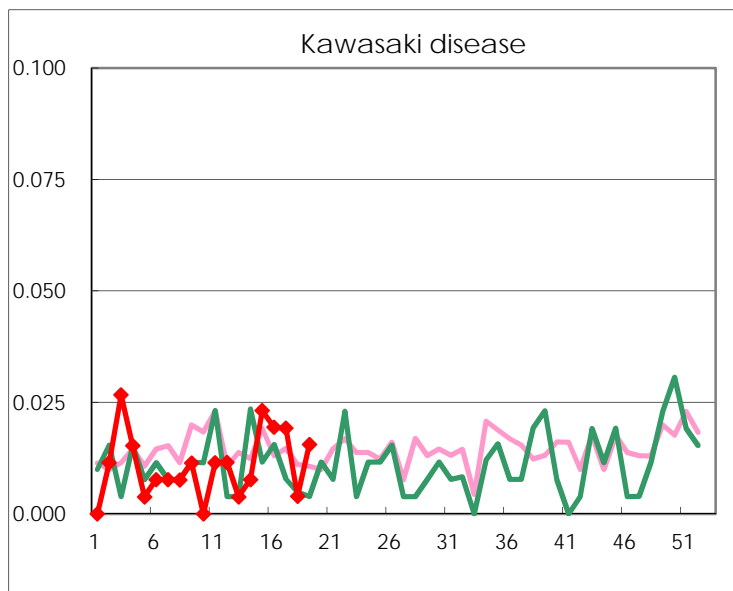
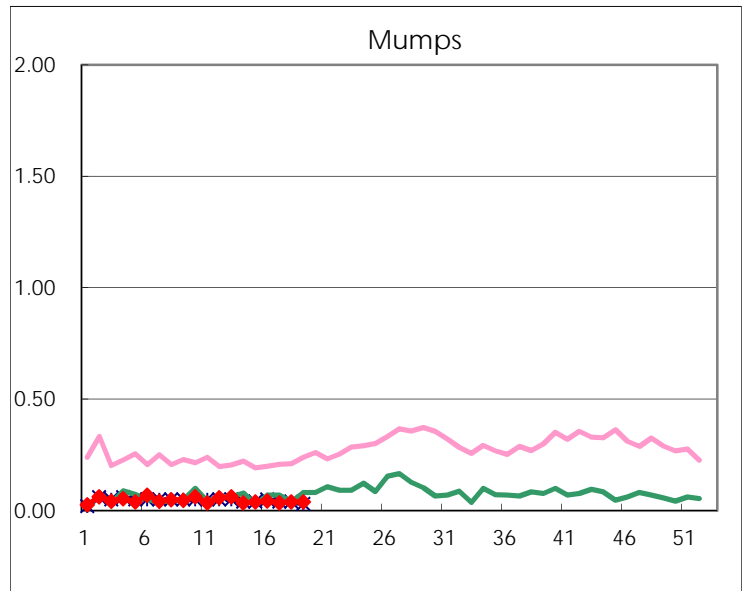
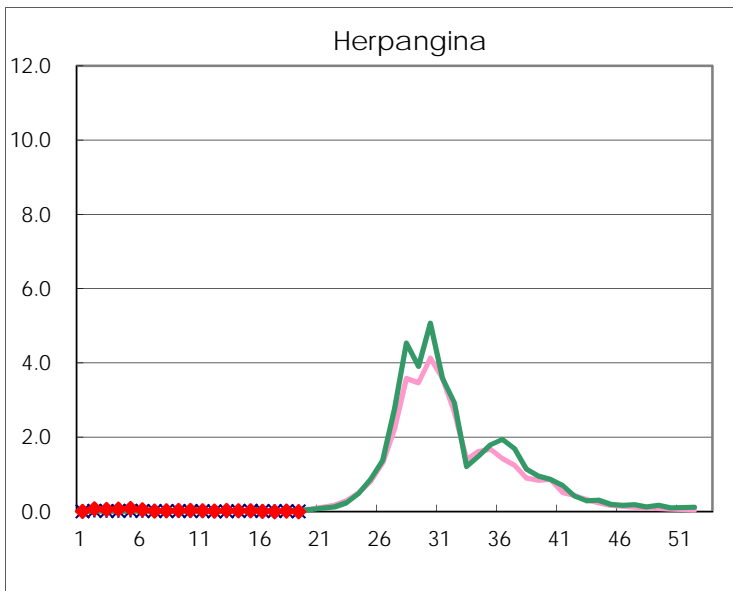
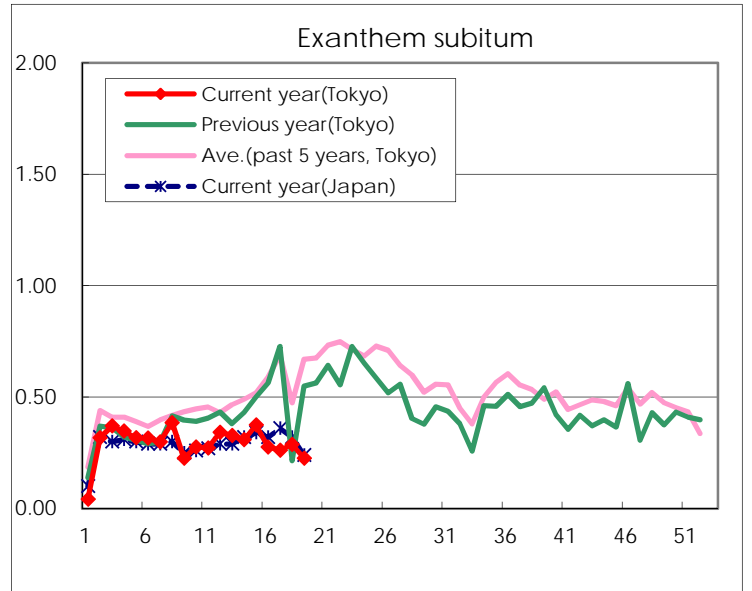
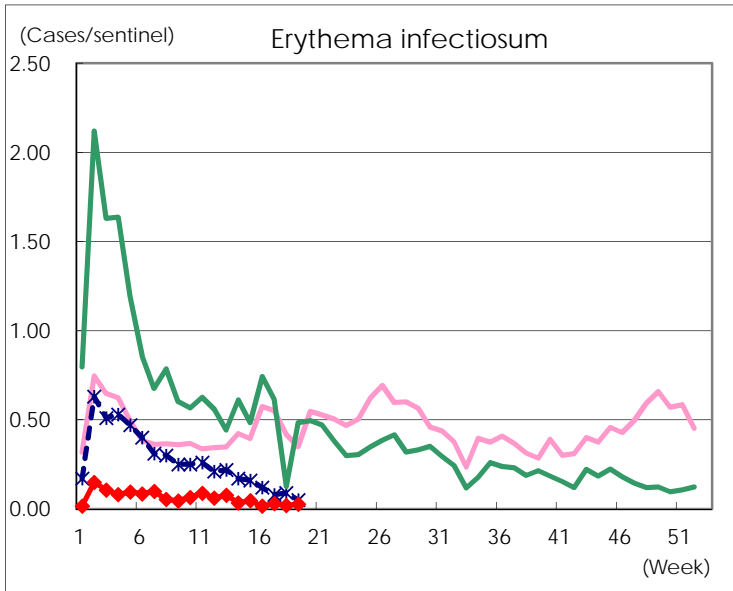
Number of patients with the diseases to be reported  
by the designated clinics and hospitals

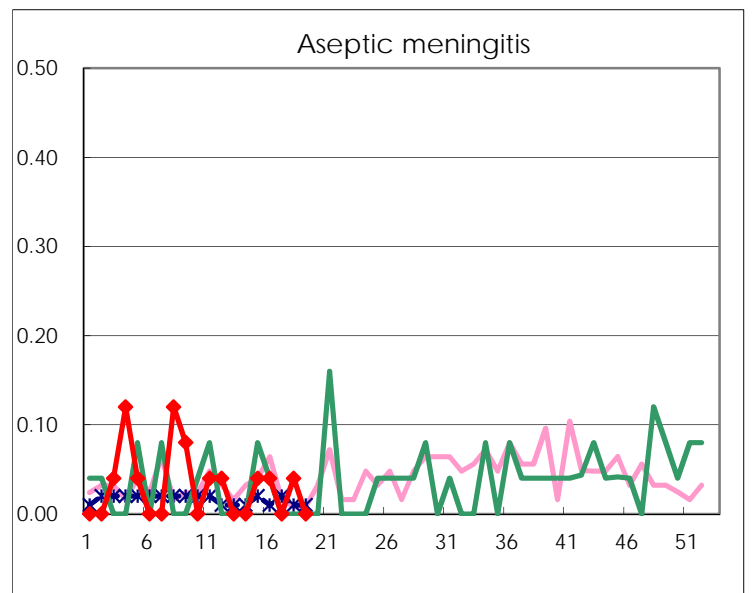
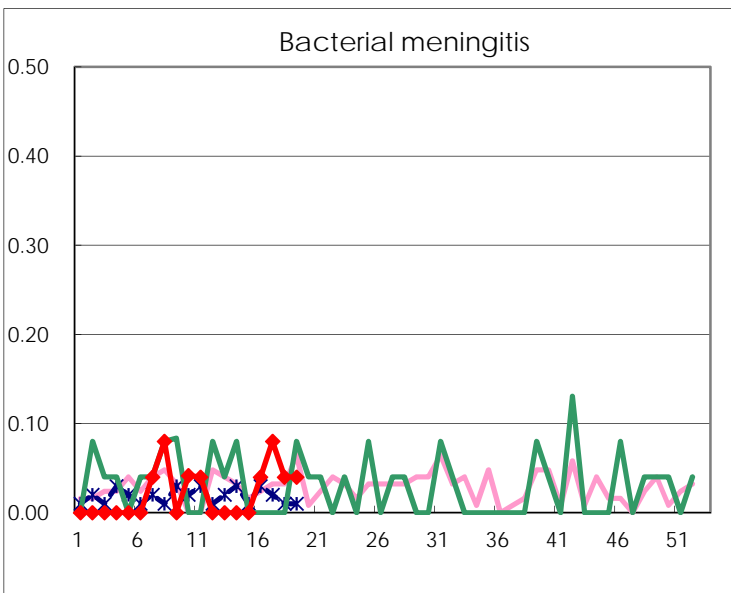
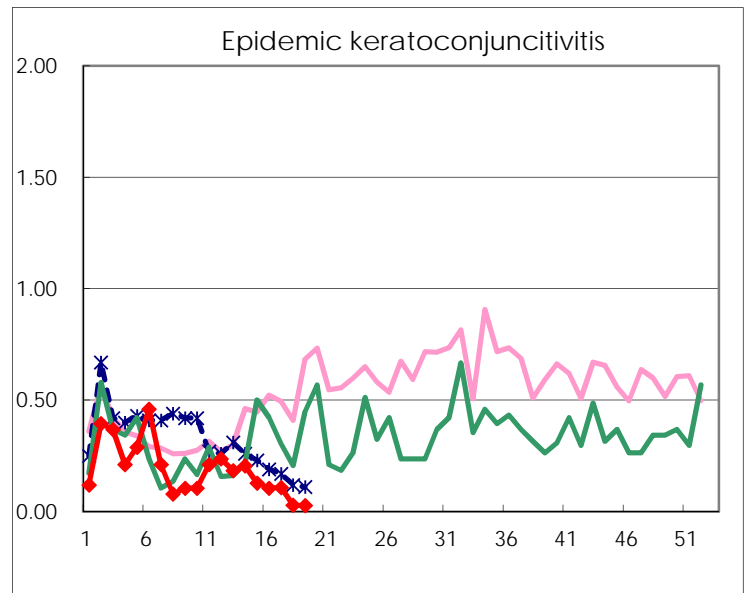
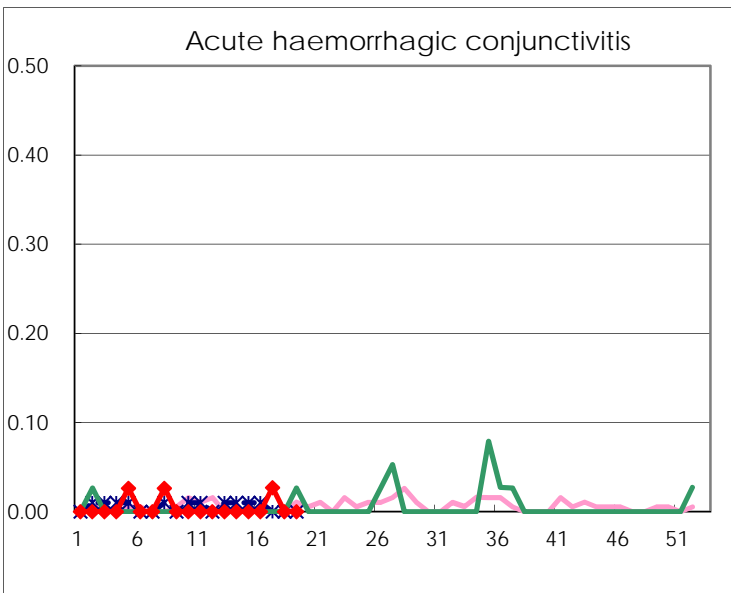
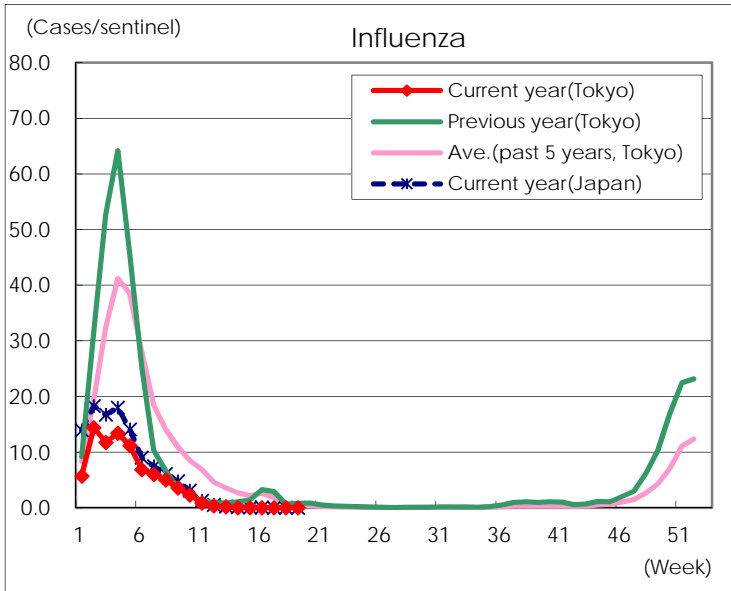
Diseases	Tokyo				
	16th	17th	18th	19th	/sentinel
Respiratory syncytial virus infection	2	1	1	1	
Pharyngoconjunctival fever	11	11	6	6	0.02
Group A streptococcal pharyngitis	136	90	94	53	0.21
Infectious gastroenteritis	257	242	227	173	0.67
Chickenpox	49	20	12	9	0.04
Hand, foot, and mouth disease	7	8	6	7	0.03
Erythema infectiosum	4	8	5	7	0.03
Exanthem subitum	71	68	73	58	0.23
Herpangina	3	1	5	1	
Mumps	11	9	10	10	0.04
Kawasaki disease	5	5	1	4	0.02
Cold with exanths	7	4	8	5	0.02
Influenza		2			
Acute hemorrhagic conjunctivitis		1			
Epidemic keratoconjunctivitis	4	4	1	1	0.03
Bacterial meningitis	1	2	1	1	0.04
Aseptic meningitis	1		1		
Mycoplasma pneumonia	5	5	5	2	0.08
Chlamydial pneumonia (excluding psittacosis)	2		1	1	0.04
Infectious gastroenteritis (only by Rotavirus)					
Influenza-Associated Hospitalizations					

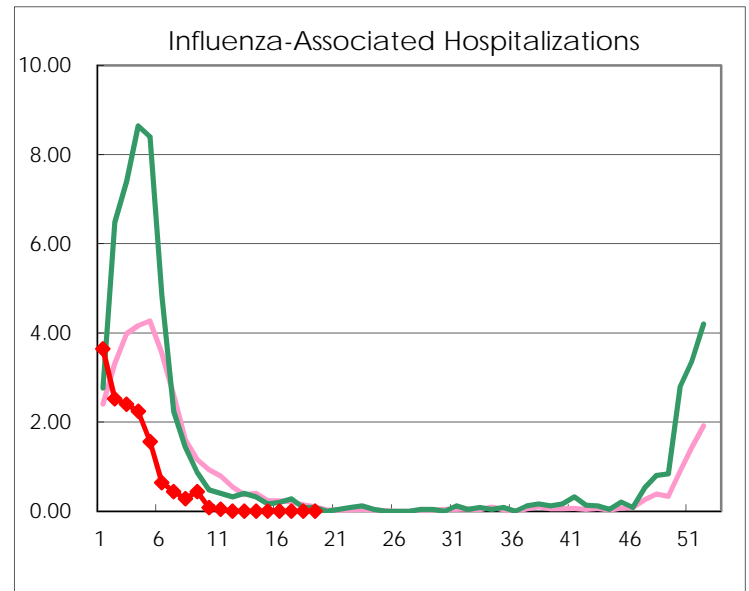
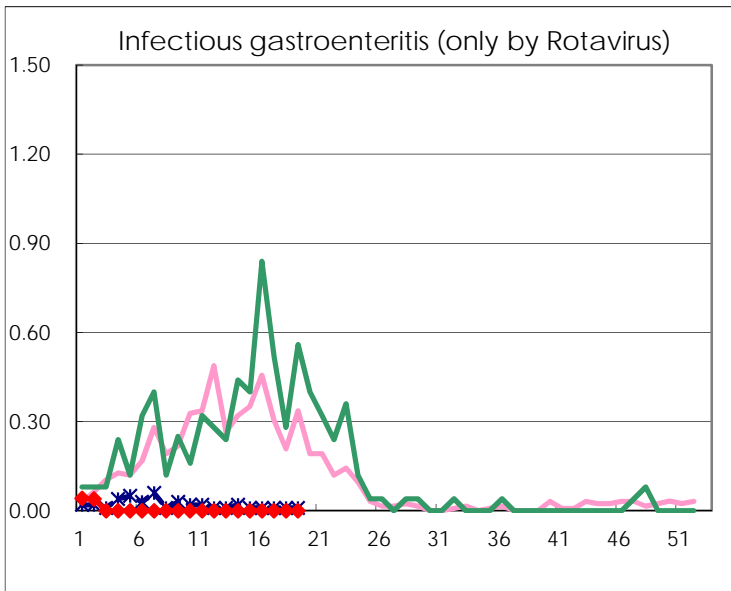
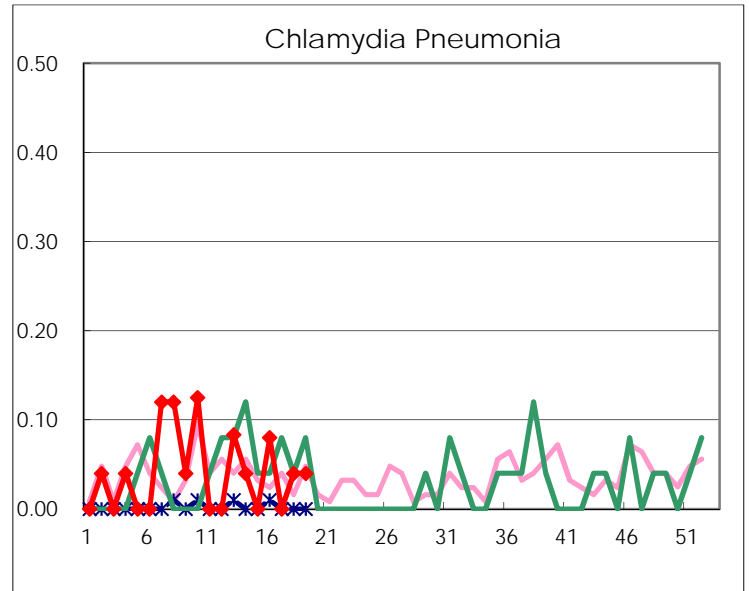
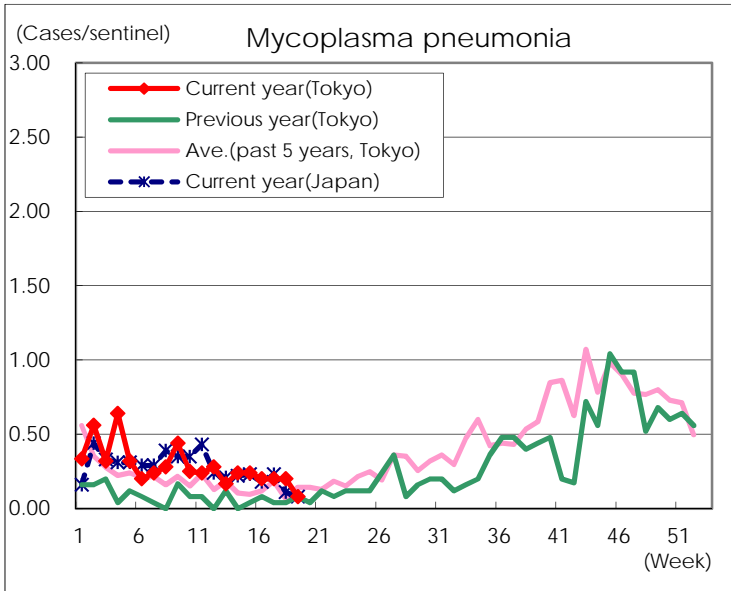
( Blank means 0. )

# Disease Trend Graph (weekly reported cases per sentinel in comparison)









Number of sentinel facilities for weekly reporting		
Types of sentinels	Number of sentinels	Sentinels having reported
Pediatric	264	257
Influenza	419	408
Ophthalmic	39	37
Specially-designated	25	25