

**21 May 2020 / Number 20**  
**( 5/11 ~ 5/17 )**

## Surveillance System in Tokyo, Japan

The infectious diseases which all physicians must report

All physicians must report to health centers the incidence of the diseases which are shown at page one. Health centers electronically report the individual cases to Tokyo Metropolitan Infectious Disease Surveillance Center.

The infectious diseases required to be reported by the sentinels

The numbers of patients who visit the sentinel clinics or hospitals during a week are reported to health centers in Tokyo. And they electronically report the numbers to Tokyo Metropolitan Infectious Disease Surveillance Center. We have about 500 sentinel clinics and hospitals in Tokyo.

Tokyo Metropolitan Institute of Public Health

TEL:81-3-3363-3213 FAX:81-3-5332-7365

e-mail:[www@tokyo-eiken.go.jp](mailto:www@tokyo-eiken.go.jp)

URL:[idsc.tokyo-eiken.go.jp/](http://idsc.tokyo-eiken.go.jp/)

---

Number of patients with the diseases which all physicians must report

Category	Diseases	Tokyo					Japan	
		17th	18th	19th	20th	Cum 2020	20th	Cum 2020
I	Ebola hemorrhagic fever							
	Crimean-Congo hemorrhagic fever							
	Smallpox							
	South American hemorrhagic fever							
	Plague							
	Marburg disease							
	Lassa fever							
II	Acute poliomyelitis							
	Tuberculosis	47	36	25	42	914	250	6,177
	Diphtheria							
	Severe Acute Respiratory Syndrome(SARS)							
	Middle East Respiratory Syndrome (MERS)							
	Avian influenza H5N1							
	Avian influenza H7N9							
※	Novel Coronavirus 2019 infection	775	536	211	79	5,199	230	15,892
III	Cholera							
	Shigellosis					9	1	40
	Enterohemorrhagic Escherichia coli infection	1	3		1	41	24	378
	Typhoid fever					1		16
	Paratyphoid fever					1		7
IV	Hepatitis E		4		2	59	6	208
	West Nile fever							
	Hepatitis A					15	4	57
	Echinococcosis							7
	Yellow fever							
	Psittacosis							3
	Omsk hemorrhagic fever							
	Relapsing fever							
	Kyasanur forest disease							
	Q fever							
	Rabies							
	Coccidioidomycosis					1		2
	Monkeypox							
	Zika virus infection							1
	Severe Fever with Thrombocytopenia Syndrome						1	18
	Hemorrhagic fever with renal syndrome							
	Western equine encephalitis							
	Tick-borne encephalitis							
	Anthrax							
	Chikungunya fever							3
	Scrub typhus(Tsutsugamushi disease)					5	2	70
	Dengue fever					12		40
	Eastern equine encephalitis							
	Avian influenza (excluding H5N1 and H7N9)							
	Nipah virus infection							
	Japanese spotted fever						5	37
	Japanese encephalitis							1
	Hantavirus pulmonary syndrome							
	Herpes B virus infection							
	Glanders							
	Brucellosis							1
	Venezuelan equine encephalitis							
	Hendra virus infection							
	Epidemic typhus							
	Botulism							
	Malaria			1		5		12
	Tularemia							
	Lyme disease							2
	Lyssavirus infection(excluding rabies)							
	Rift valley fever							
Melioidosis								
Legionellosis	1				26	12	483	
Leptospirosis							1	
Rocky mountain spotted fever								

Category	Diseases	Tokyo					Japan	
		17th	18th	19th	20th	Cum 2020	20th	Cum 2020
V	Amebiasis	2	1			46	6	228
	Viral hepatitis(excluding hepatitis A and E)		1			24	3	99
	CRE infection	1		3	1	40	18	552
	Acute Flaccid Paralysis (excluding Acute poliomyelitis)					1	1	13
	Acute encephalitis(excluding JE and WNE)					17	1	263
	Cryptosporidiosis							1
	Creutzfeldt-Jakob disease				1	4	1	45
	Severe invasive streptococcal infections(TSLS)	1	1		1	38	11	321
	Acquired immunodeficiency syndrome (AIDS)	7	10	2	7	129	15	358
	Giardiasis					3		13
	Invasive <i>Haemophilus influenzae</i> disease		1		1	16	1	144
	Invasive meningococcal disease					1		11
	Invasive pneumococcal disease	3	2	2	1	96	17	885
	Varicella (limited to hospitalized case)	1		1	2	24	5	138
	Congenital rubella syndrome							1
	Syphilis	30	20	14	32	521	75	2,014
	Disseminated cryptococcosis	2				6	2	43
	Tetanus		1			3	2	35
	Vancomycin-resistant <i>S. aureus</i> infection							
	Vancomycin-resistant Enterococcus infection					4		46
Pertussis	8	3	2	5	206	23	2,388	
Rubella					20		74	
Measles					2		9	
MDRA infection						1	3	

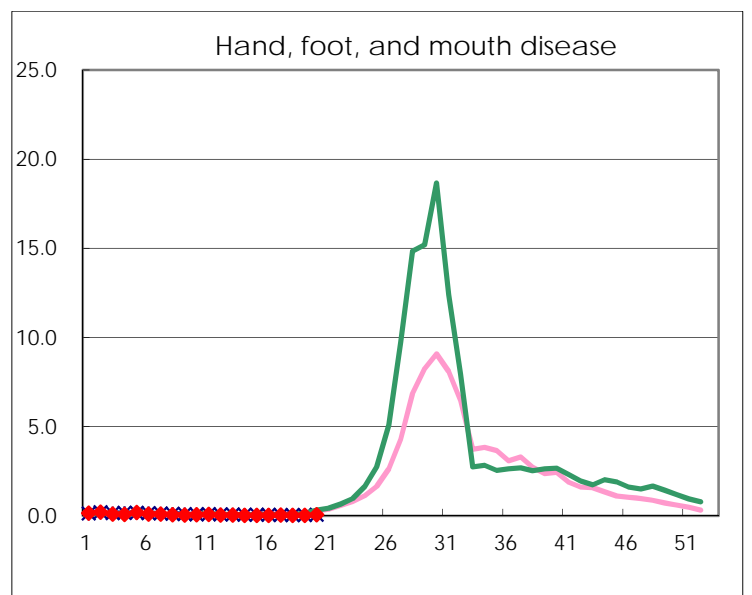
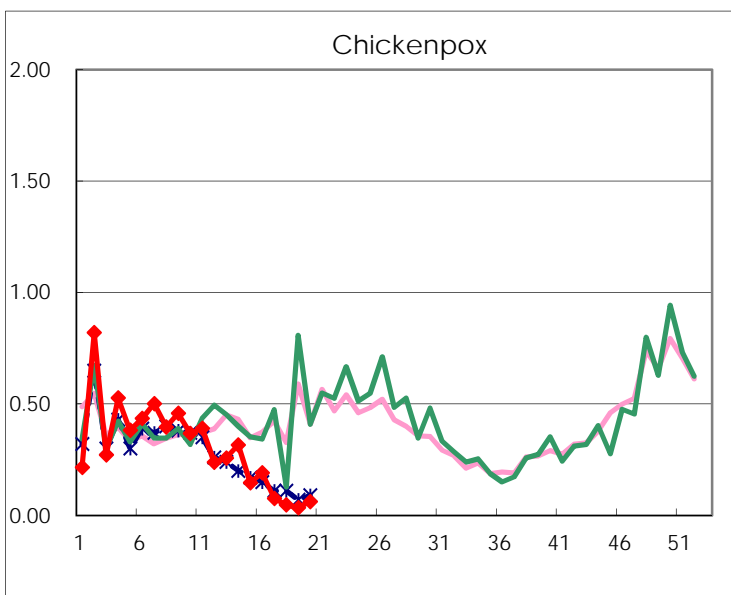
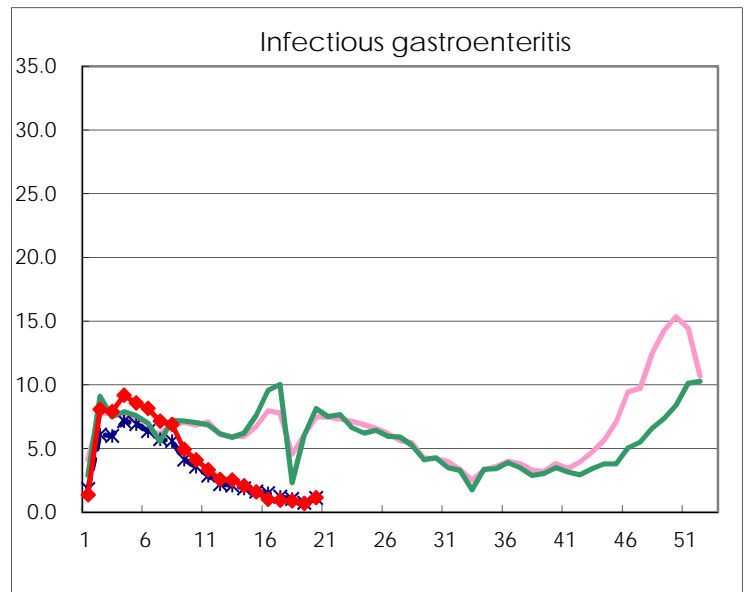
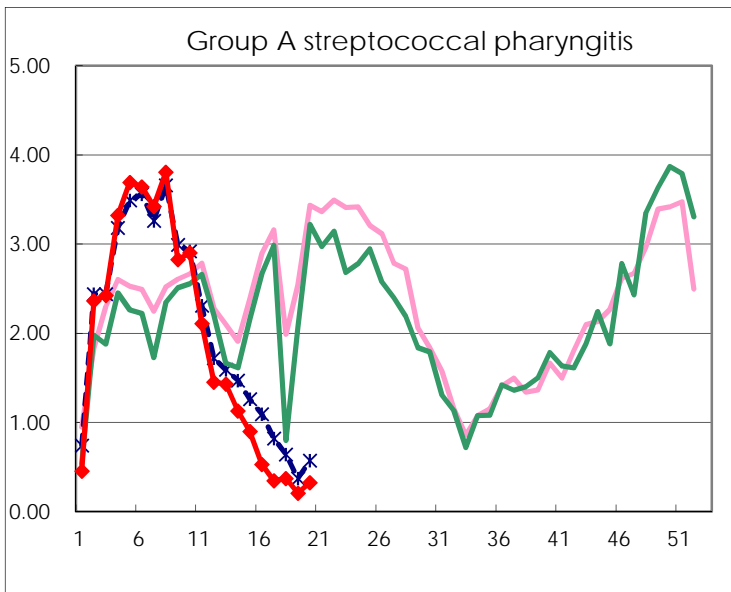
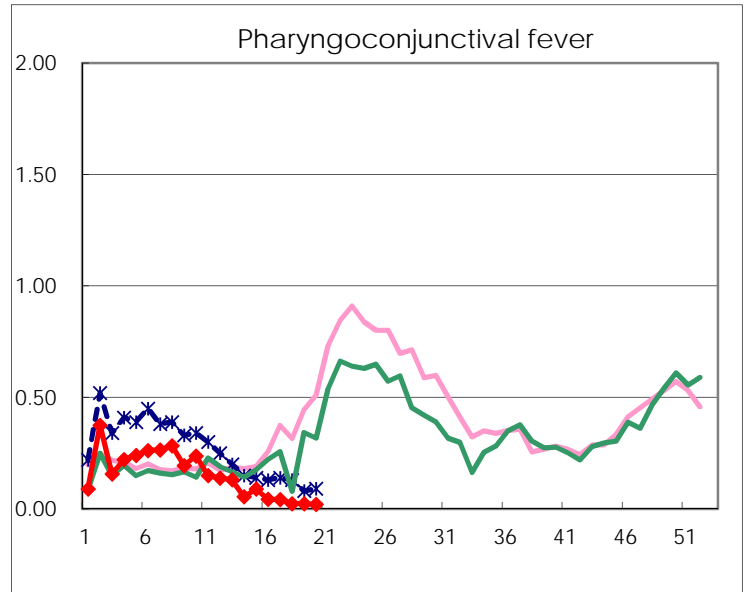
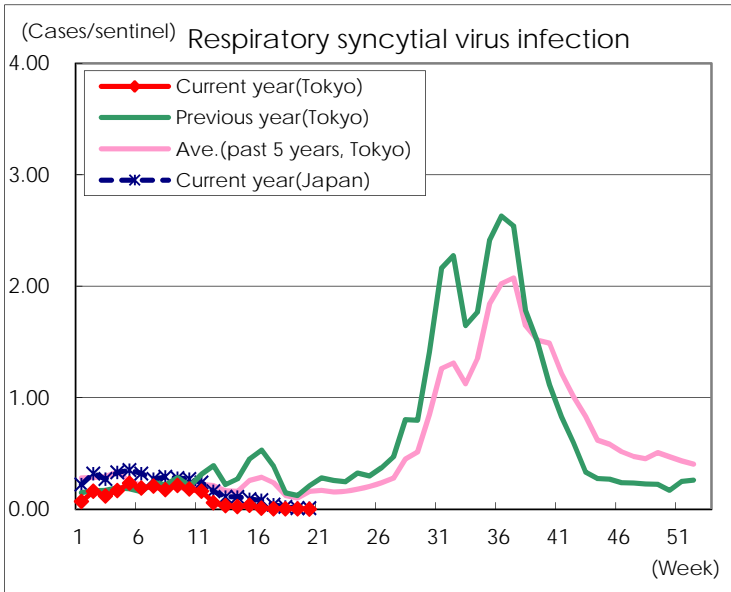
※ Designated infectious disease

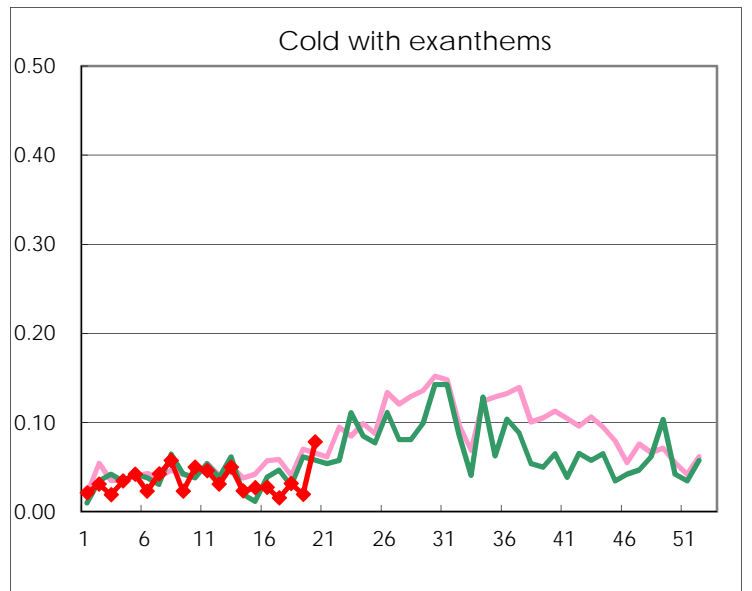
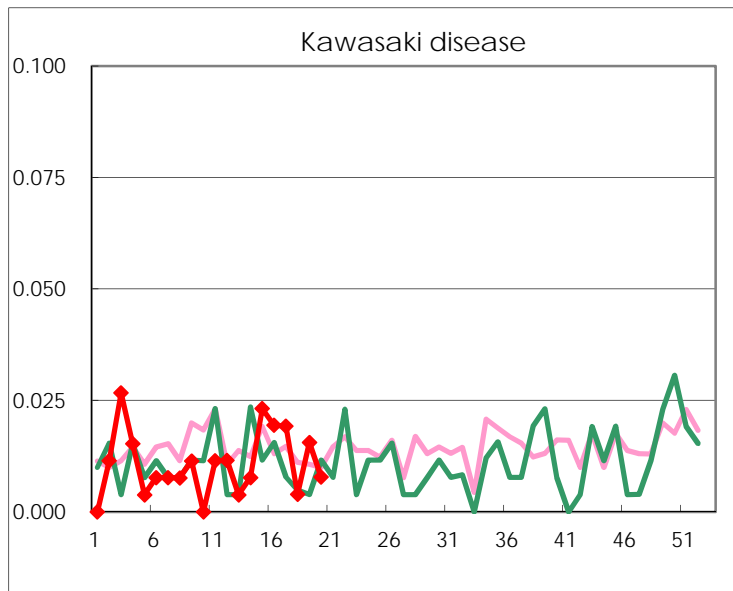
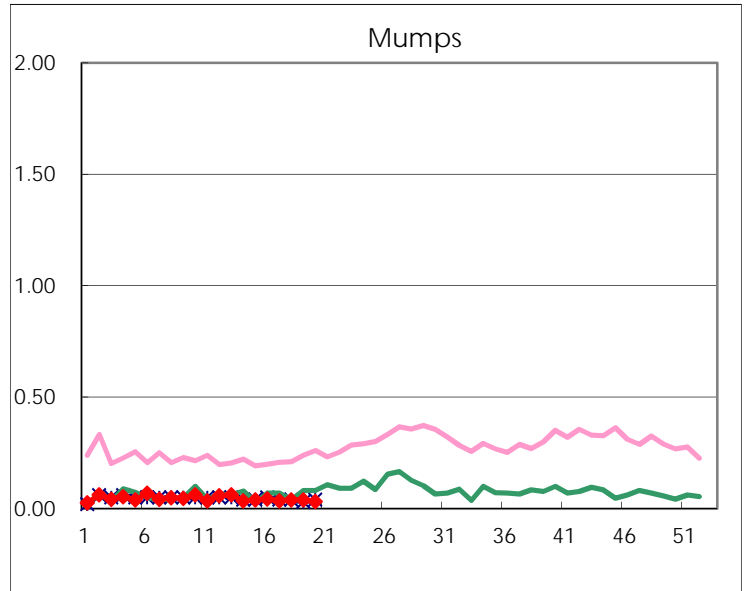
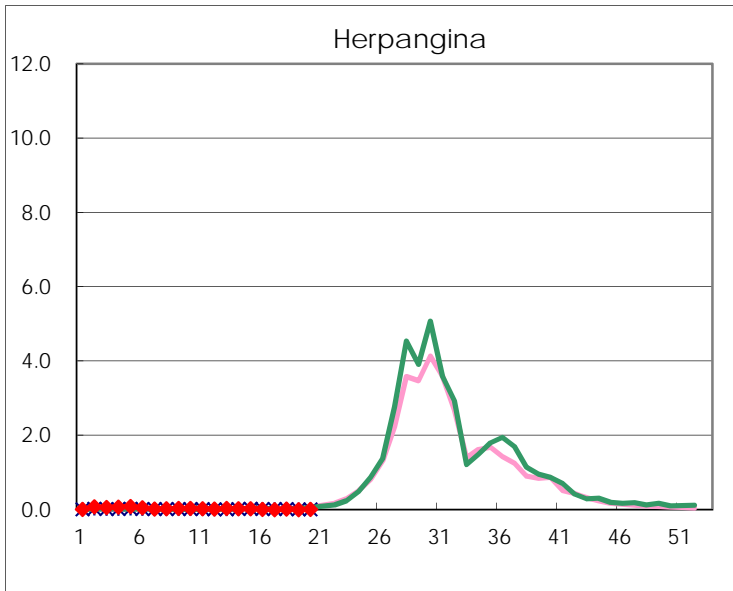
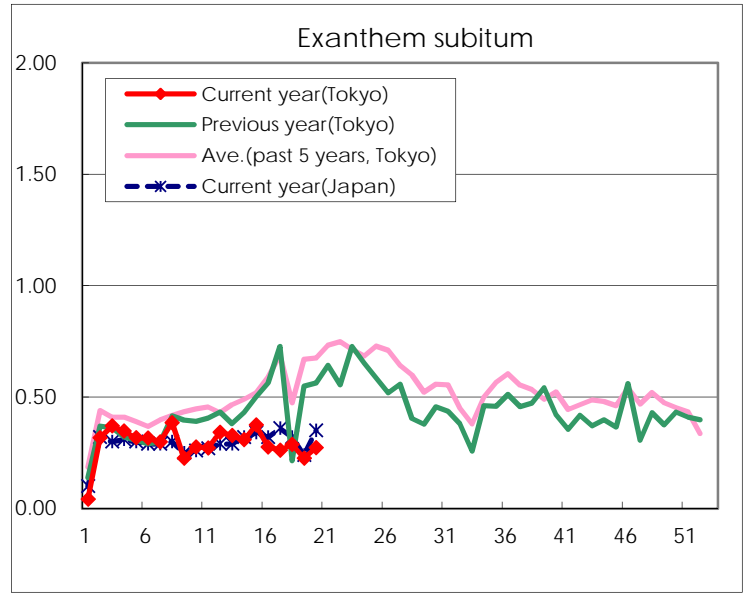
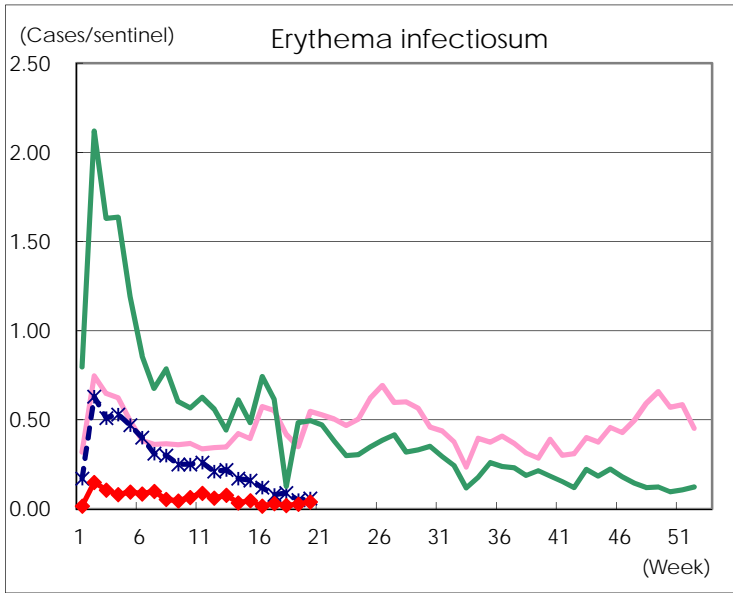
Number of patients with the diseases to be reported  
by the designated clinics and hospitals

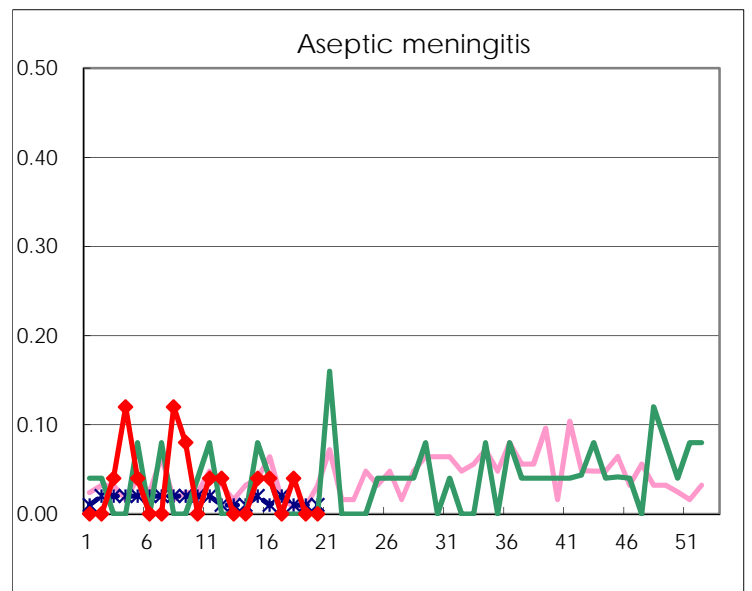
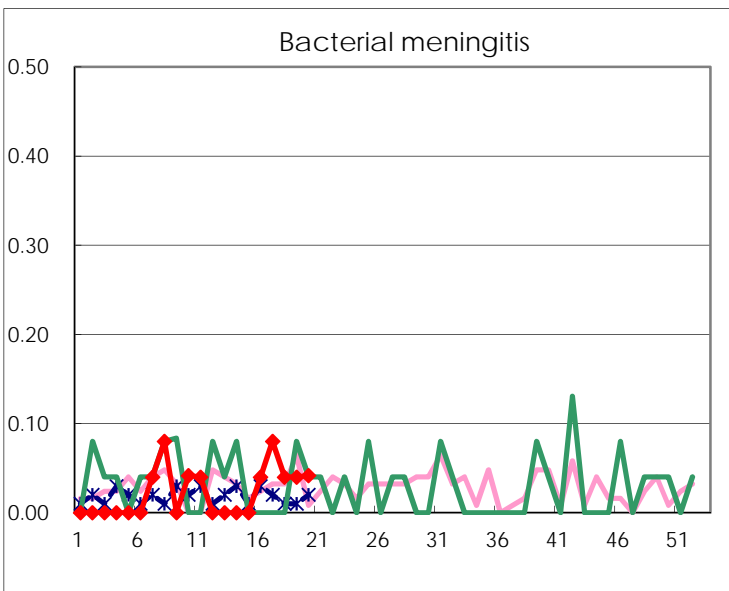
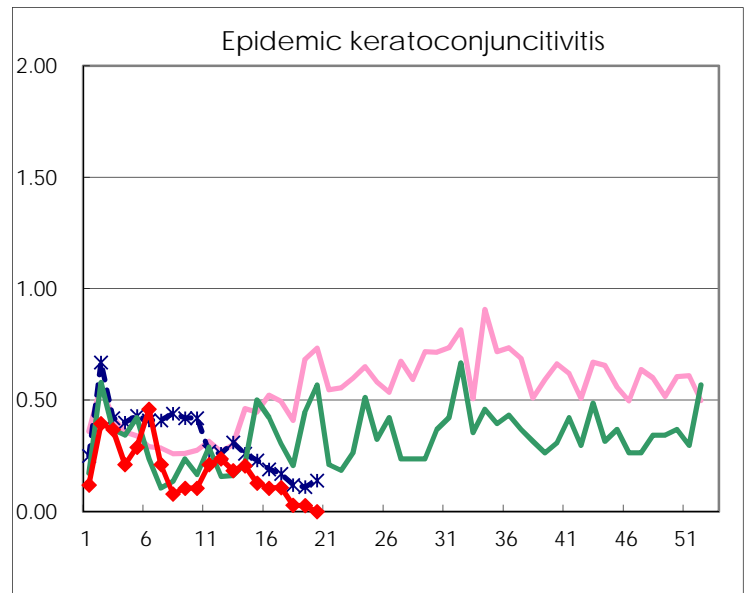
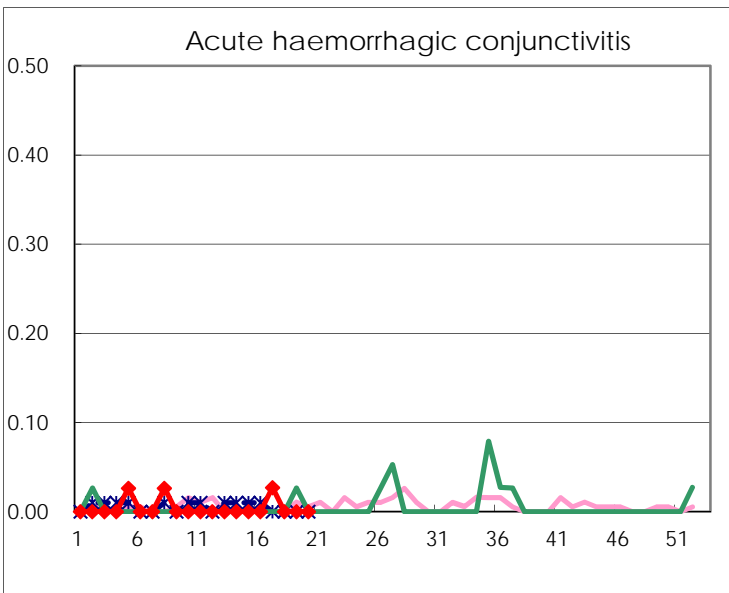
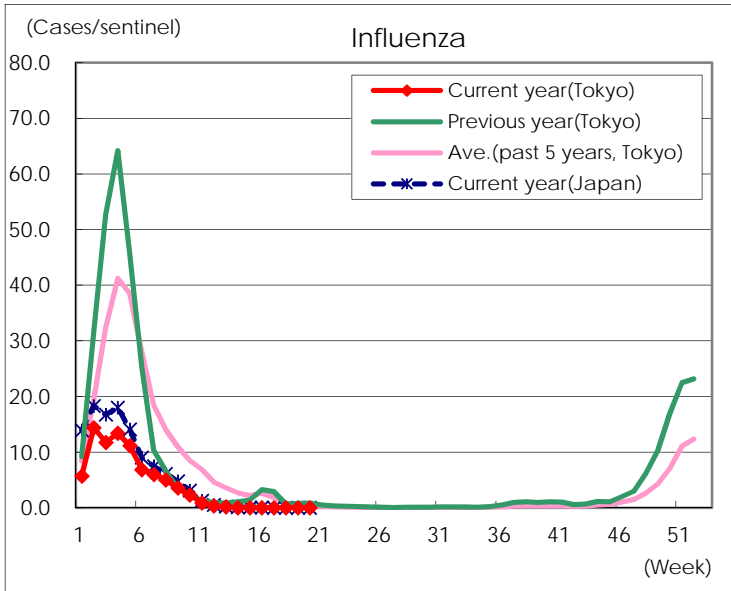
Diseases	Tokyo				
	17th	18th	19th	20th	/sentinel
Respiratory syncytial virus infection	1	1	1		
Pharyngoconjunctival fever	11	6	6	5	0.02
Group A streptococcal pharyngitis	90	94	53	83	0.32
Infectious gastroenteritis	242	227	173	291	1.14
Chickenpox	20	12	9	16	0.06
Hand, foot, and mouth disease	8	6	7	13	0.05
Erythema infectiosum	8	5	7	10	0.04
Exanthem subitum	68	73	58	70	0.27
Herpangina	1	5	1	3	0.01
Mumps	9	10	10	8	0.03
Kawasaki disease	5	1	4	2	0.01
Cold with exanths	4	8	5	20	0.08
Influenza	2				
Acute hemorrhagic conjunctivitis	1				
Epidemic keratoconjunctivitis	4	1	1		
Bacterial meningitis	2	1	1	1	0.04
Aseptic meningitis		1			
Mycoplasma pneumonia	5	5	2	3	0.13
Chlamydial pneumonia (excluding psittacosis)		1	1		
Infectious gastroenteritis (only by Rotavirus)					
Influenza-Associated Hospitalizations					

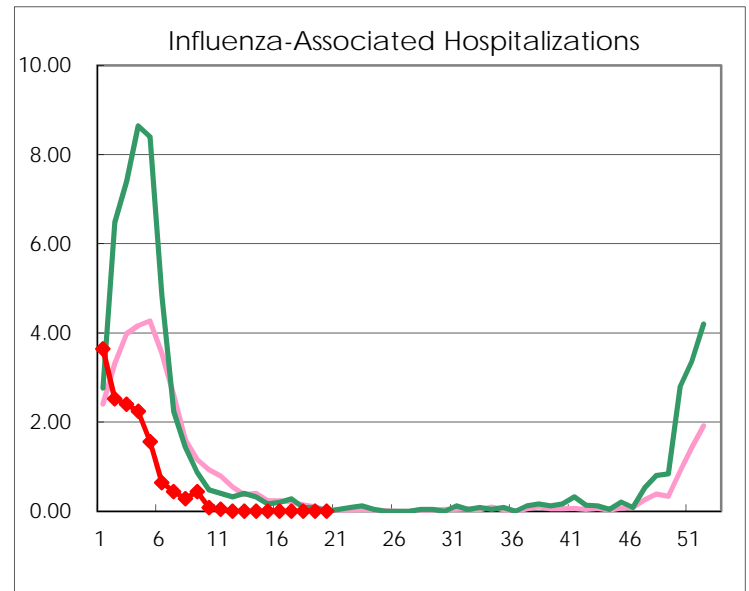
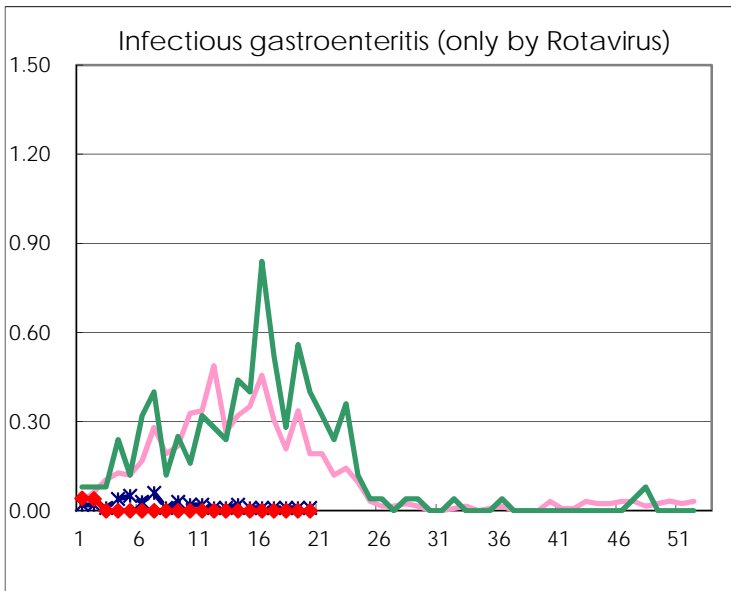
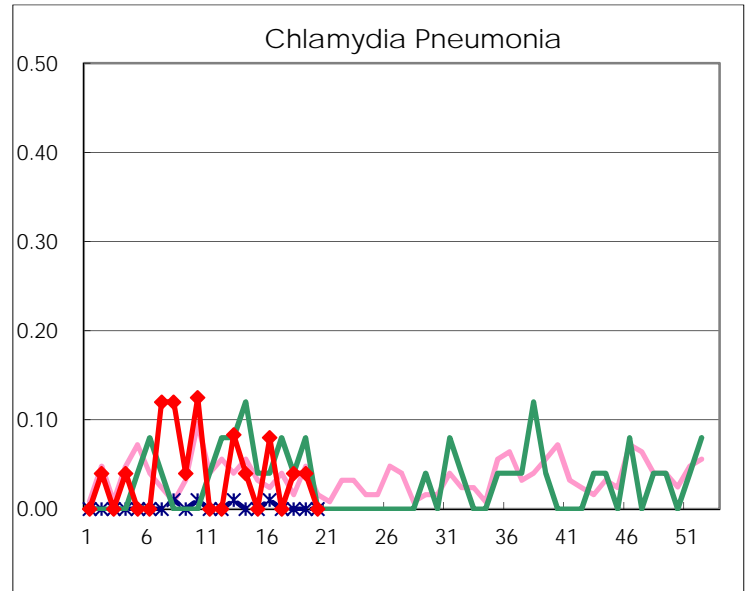
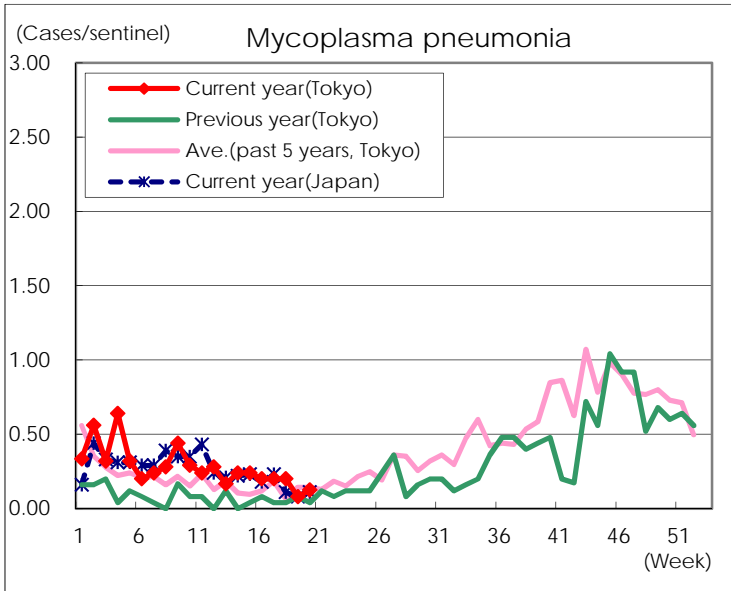
( Blank means 0. )

# Disease Trend Graph (weekly reported cases per sentinel in comparison)









Number of sentinel facilities for weekly reporting		
Types of sentinels	Number of sentinels	Sentinels having reported
Pediatric	264	256
Influenza	419	409
Ophthalmic	39	36
Specially-designated	25	24