

**28 May 2020 / Number 21**  
**( 5/18 ~ 5/24 )**

## Surveillance System in Tokyo, Japan

The infectious diseases which all physicians must report

All physicians must report to health centers the incidence of the diseases which are shown at page one. Health centers electronically report the individual cases to Tokyo Metropolitan Infectious Disease Surveillance Center.

The infectious diseases required to be reported by the sentinels

The numbers of patients who visit the sentinel clinics or hospitals during a week are reported to health centers in Tokyo. And they electronically report the numbers to Tokyo Metropolitan Infectious Disease Surveillance Center. We have about 500 sentinel clinics and hospitals in Tokyo.

Tokyo Metropolitan Institute of Public Health

TEL:81-3-3363-3213 FAX:81-3-5332-7365

e-mail:[www@tokyo-eiken.go.jp](mailto:www@tokyo-eiken.go.jp)

URL:[idsc.tokyo-eiken.go.jp/](http://idsc.tokyo-eiken.go.jp/)

---

Number of patients with the diseases which all physicians must report

Category	Diseases	Tokyo					Japan		
		18th	19th	20th	21st	Cum 2020	21st	Cum 2020	
I	Ebola hemorrhagic fever								
	Crimean-Congo hemorrhagic fever								
	Smallpox								
	South American hemorrhagic fever								
	Plague								
	Marburg disease								
	Lassa fever								
II	Acute poliomyelitis								
	Tuberculosis	39	26	43	34	956	242	6,516	
	Diphtheria								
	Severe Acute Respiratory Syndrome(SARS)								
	Middle East Respiratory Syndrome (MERS)								
	Avian influenza H5N1								
	Avian influenza H7N9								
※	Novel Coronavirus 2019 infection	537	211	79	51	5,261	154	16,696	
III	Cholera								
	Shigellosis					9	5	44	
	Enterohemorrhagic Escherichia coli infection	3		1	2	43	24	403	
	Typhoid fever					1		16	
	Paratyphoid fever					1		7	
IV	Hepatitis E	4		2		59	4	212	
	West Nile fever								
	Hepatitis A					15	2	62	
	Echinococcosis							7	
	Yellow fever								
	Psittacosis						1	4	
	Omsk hemorrhagic fever								
	Relapsing fever								
	Kyasanur forest disease								
	Q fever								
	Rabies						1	1	
	Coccidioidomycosis					1		2	
	Monkeypox								
	Zika virus infection							1	
	Severe Fever with Thrombocytopenia Syndrome						2	20	
	Hemorrhagic fever with renal syndrome								
	Western equine encephalitis								
	Tick-borne encephalitis								
	Anthrax								
	Chikungunya fever								3
	Scrub typhus(Tsutsugamushi disease)					5	1	71	
	Dengue fever					12		40	
	Eastern equine encephalitis								
	Avian influenza (excluding H5N1 and H7N9)								
	Nipah virus infection								
	Japanese spotted fever						6	44	
	Japanese encephalitis							1	
	Hantavirus pulmonary syndrome								
	Herpes B virus infection								
	Glanders								
	Brucellosis							1	
	Venezuelan equine encephalitis								
	Hendra virus infection								
Epidemic typhus									
Botulism									
Malaria		1				5	12		
Tularemia									
Lyme disease							2		
Lyssavirus infection(excluding rabies)									
Rift valley fever									
Melioidosis									
Legionellosis						26	13	499	
Leptospirosis								1	
	Rocky mountain spotted fever								

Category	Diseases	Tokyo					Japan	
		18th	19th	20th	21st	Cum 2020	21st	Cum 2020
V	Amebiasis	1			2	48	6	236
	Viral hepatitis(excluding hepatitis A and E)	1			2	26	6	106
	CRE infection		3	1	1	41	21	584
	Acute Flaccid Paralysis (excluding Acute poliomyelitis)					1		13
	Acute encephalitis(excluding JE and WNE)				1	18	6	272
	Cryptosporidiosis							1
	Creutzfeldt-Jakob disease			1	1	6	3	49
	Severe invasive streptococcal infections(TSLS)	1		1	1	39	10	336
	Acquired immunodeficiency syndrome (AIDS)	10	2	7	5	134	10	378
	Giardiasis					3		13
	Invasive <i>Haemophilus influenzae</i> disease	1		1		16	6	151
	Invasive meningococcal disease					1		11
	Invasive pneumococcal disease	2	2	1		96	11	902
	Varicella (limited to hospitalized case)		1	2	1	25	6	146
	Congenital rubella syndrome							1
	Syphilis	20	14	32	25	546	68	2,132
	Disseminated cryptococcosis					6	2	46
	Tetanus	1				3	1	38
	Vancomycin-resistant <i>S. aureus</i> infection							
	Vancomycin-resistant Enterococcus infection				1	5		48
Pertussis	3	2	6	4	211	25	2,425	
Rubella					20		75	
Measles					2	1	12	
MDRA infection							3	

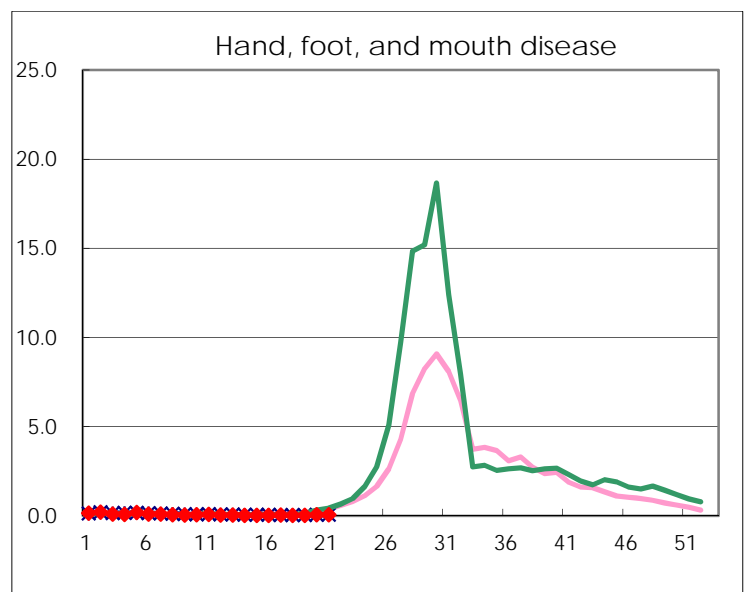
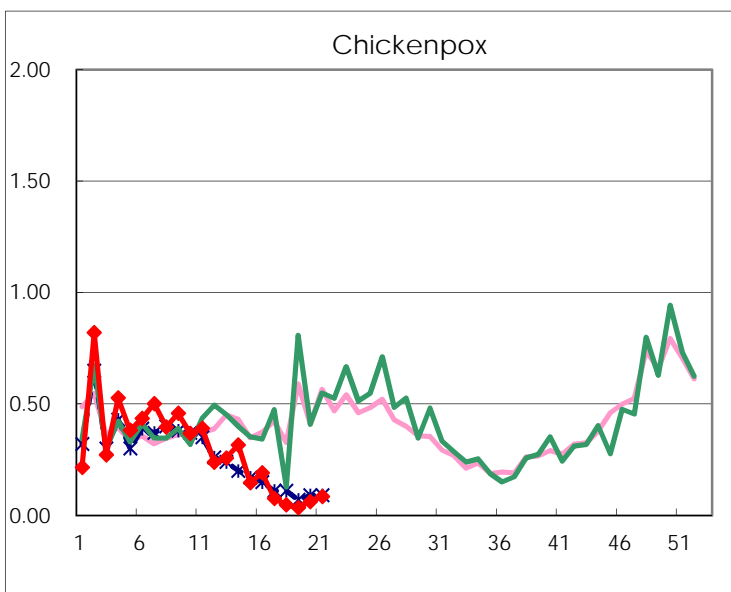
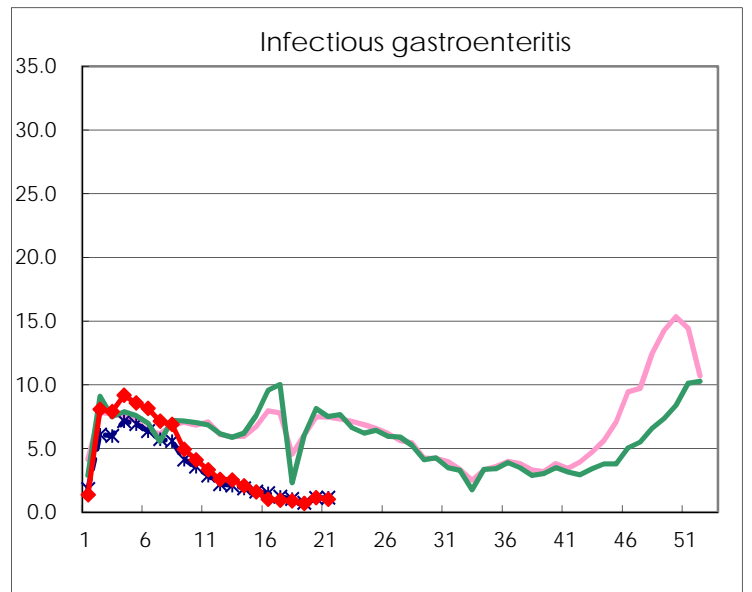
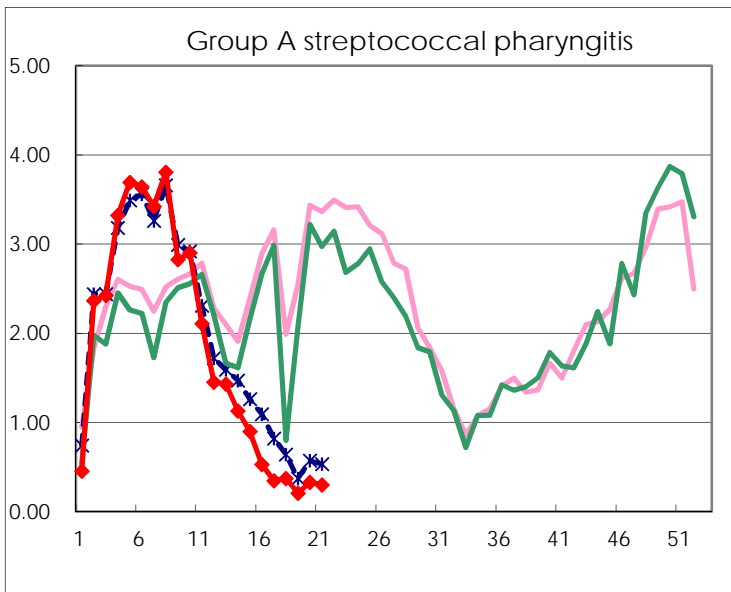
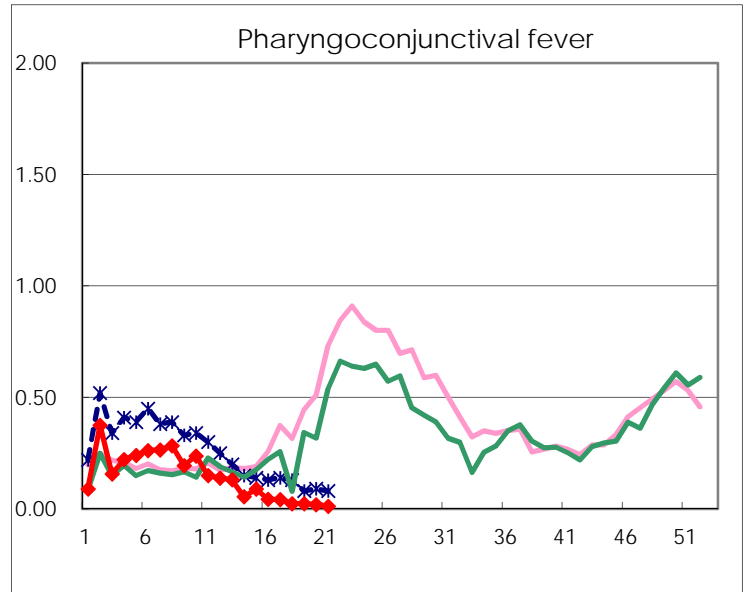
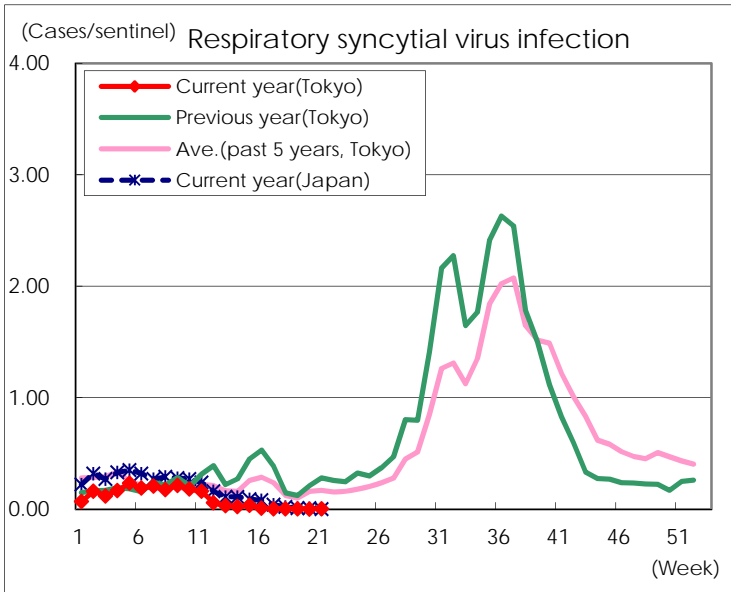
※ Designated infectious disease

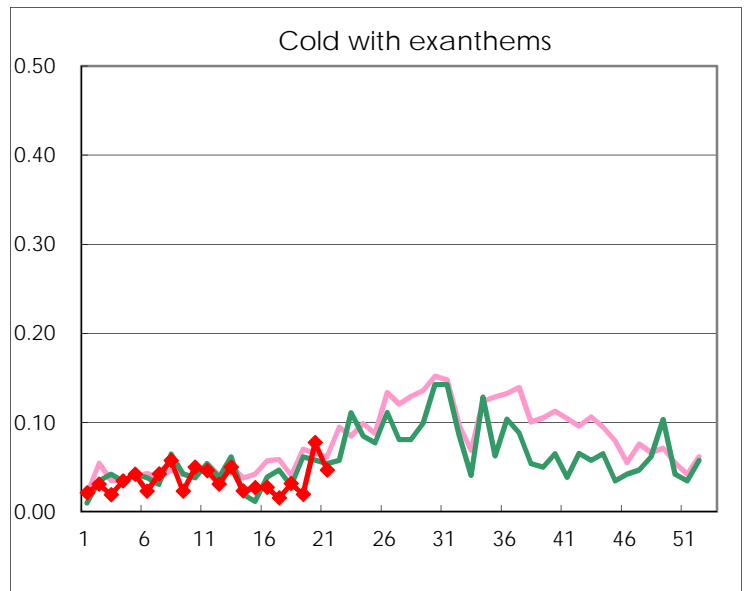
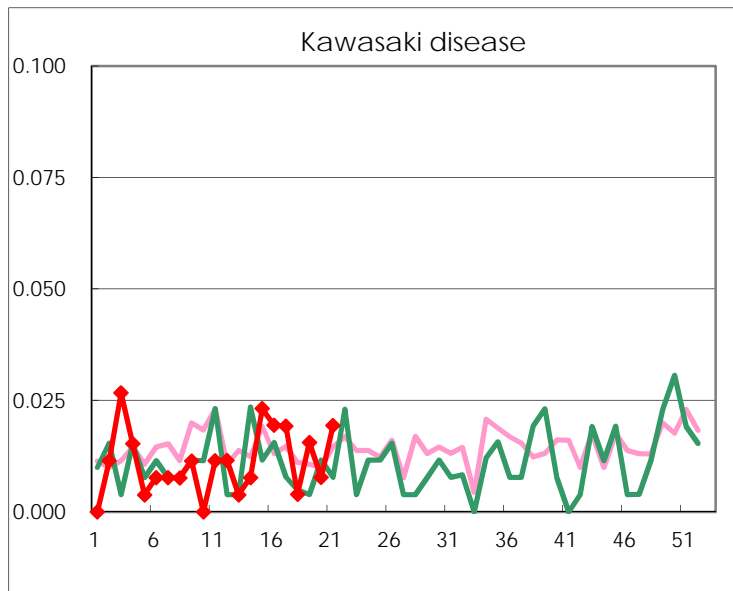
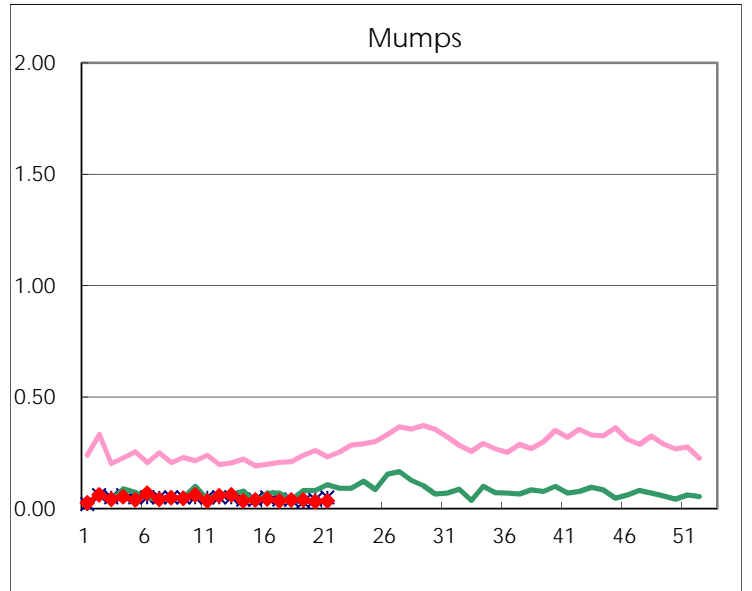
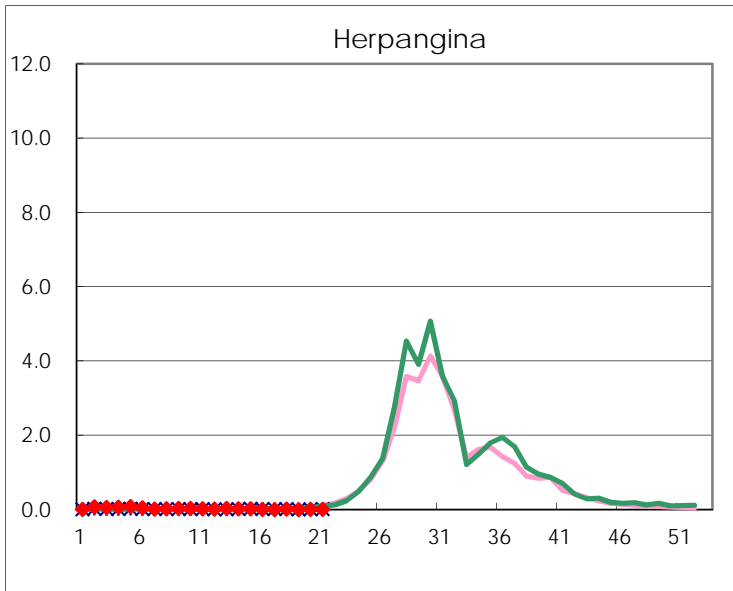
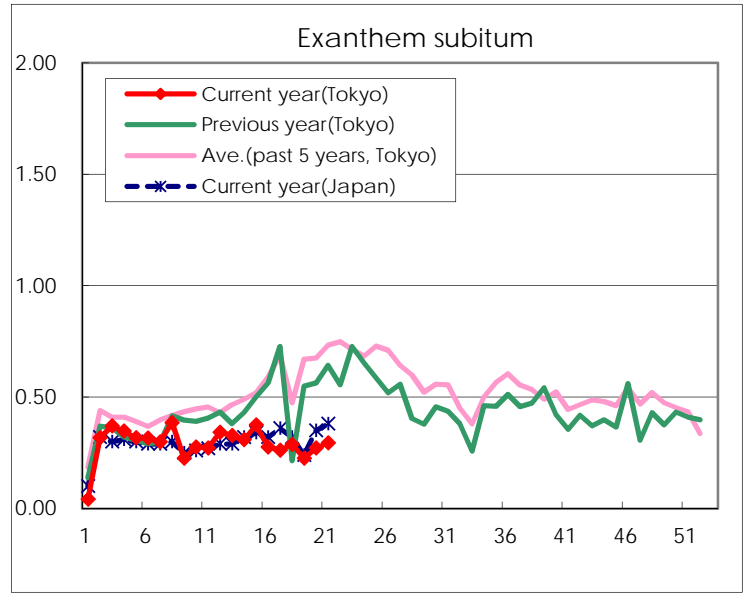
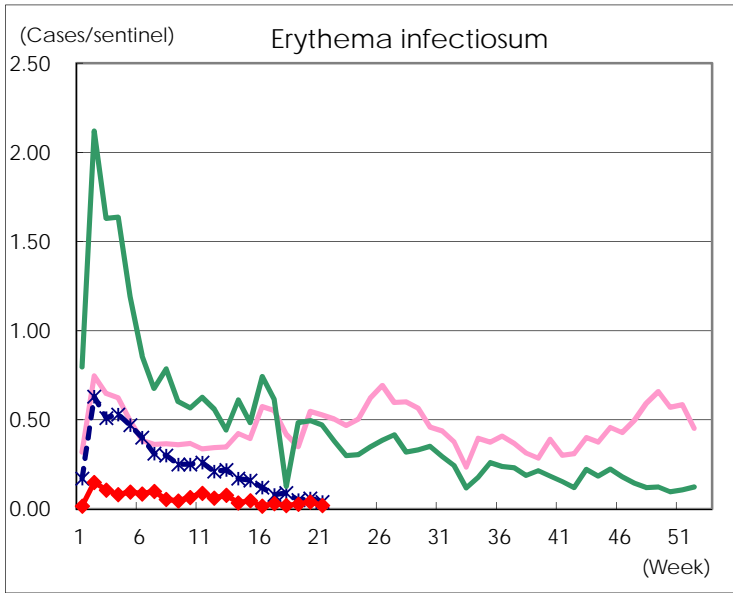
Number of patients with the diseases to be reported  
by the designated clinics and hospitals

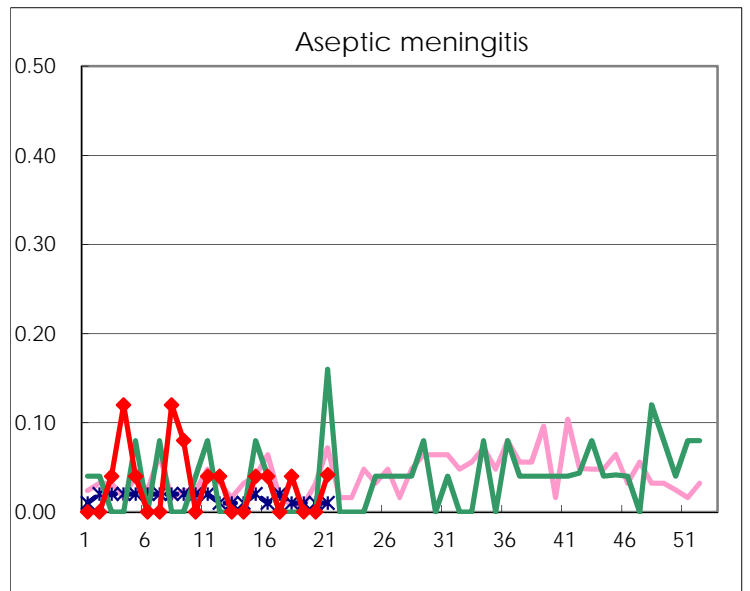
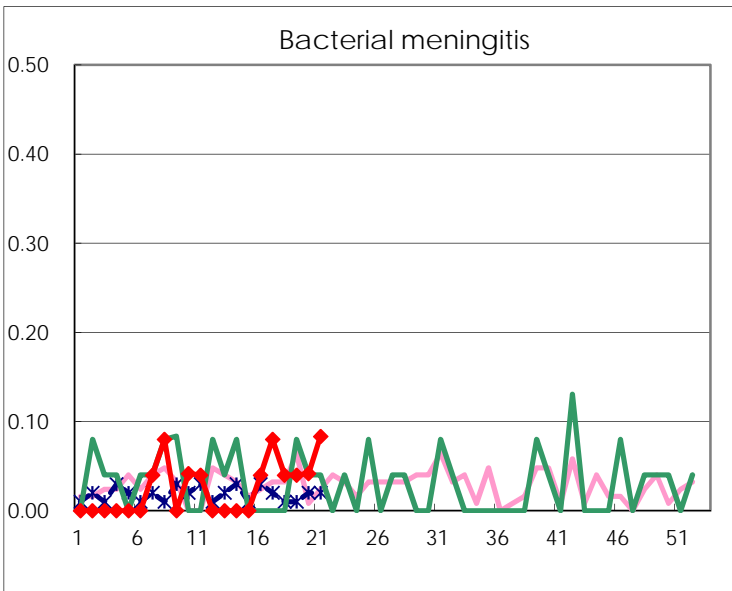
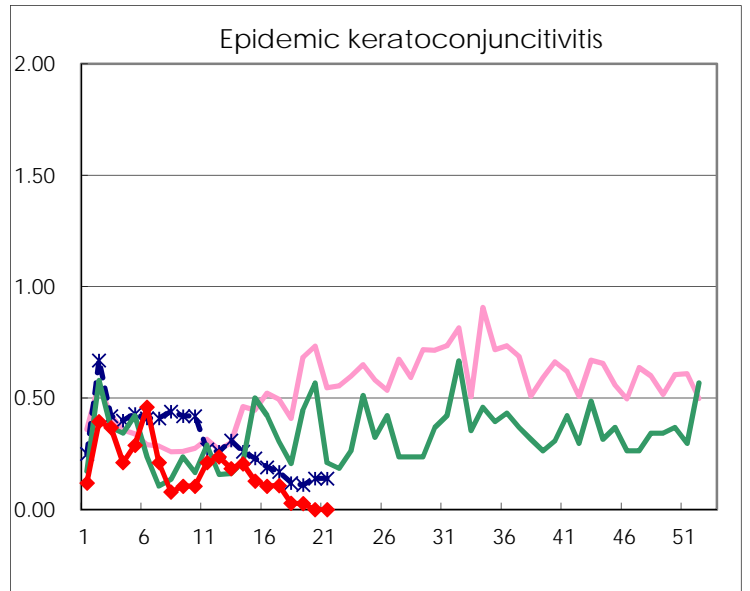
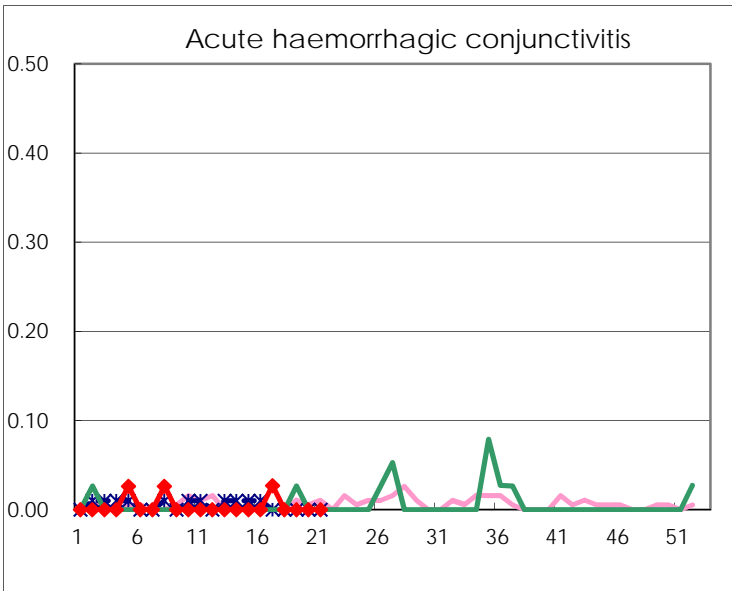
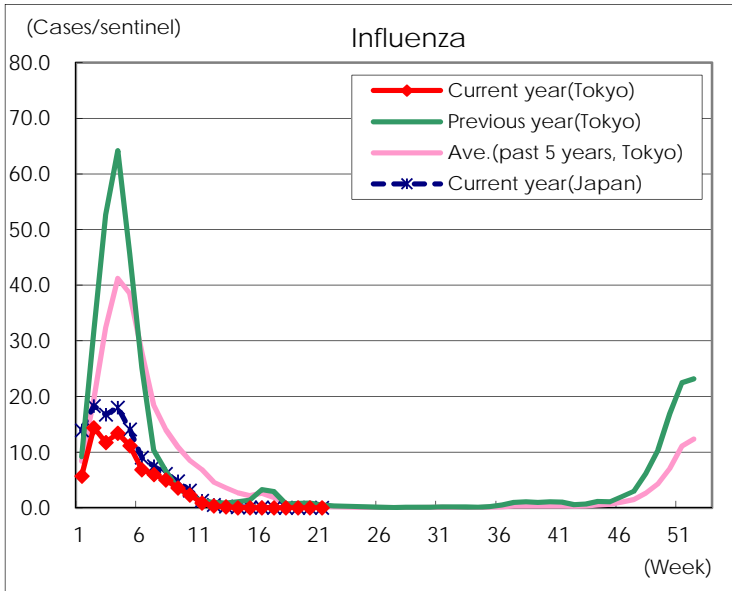
Diseases	Tokyo				
	18th	19th	20th	21st	/sentinel
Respiratory syncytial virus infection	1	1		1	
Pharyngoconjunctival fever	6	6	5	3	0.01
Group A streptococcal pharyngitis	94	53	84	77	0.30
Infectious gastroenteritis	227	173	291	262	1.02
Chickenpox	12	9	16	22	0.09
Hand, foot, and mouth disease	6	7	13	14	0.05
Erythema infectiosum	5	7	10	5	0.02
Exanthem subitum	73	58	70	76	0.29
Herpangina	5	1	2	2	0.01
Mumps	10	10	8	9	0.03
Kawasaki disease	1	4	2	5	0.02
Cold with exanthems	8	5	20	12	0.05
Influenza				1	
Acute hemorrhagic conjunctivitis					
Epidemic keratoconjunctivitis	1	1			
Bacterial meningitis	1	1	1	2	0.08
Aseptic meningitis	1			1	0.04
Mycoplasma pneumonia	5	2	3	1	0.04
Chlamydial pneumonia (excluding psittacosis)	1	1			
Infectious gastroenteritis (only by Rotavirus)					
Influenza-Associated Hospitalizations					

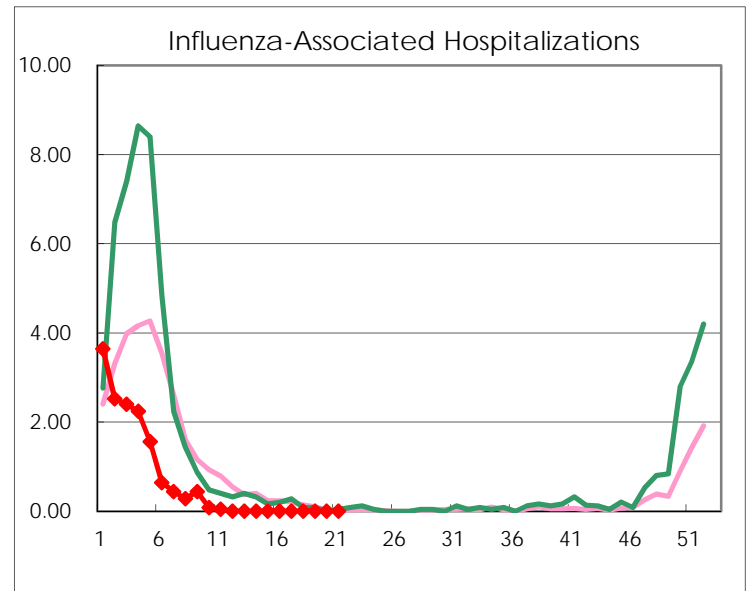
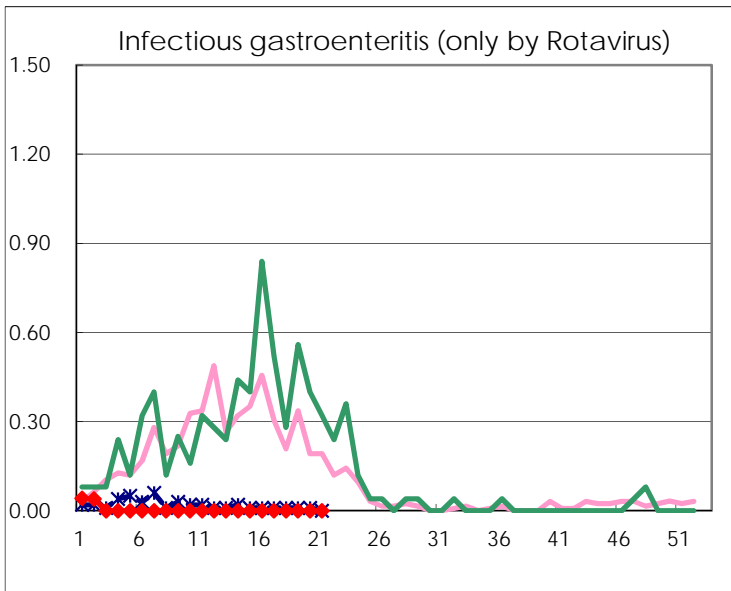
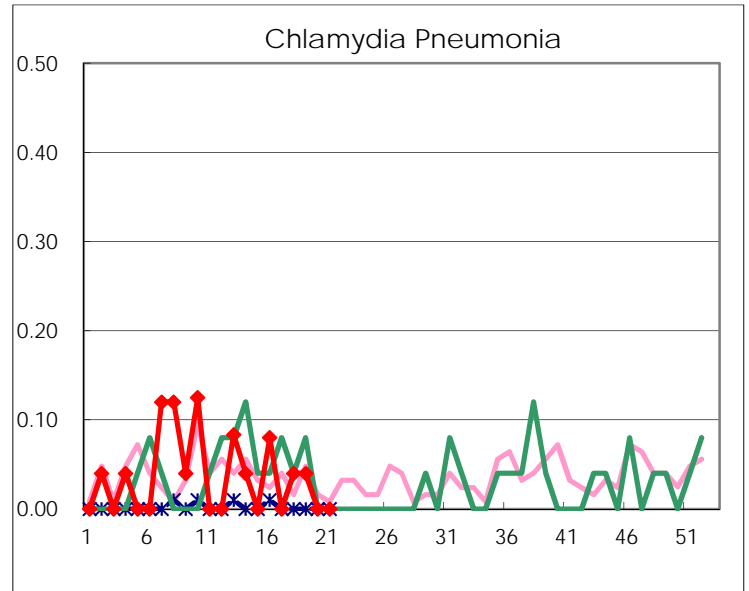
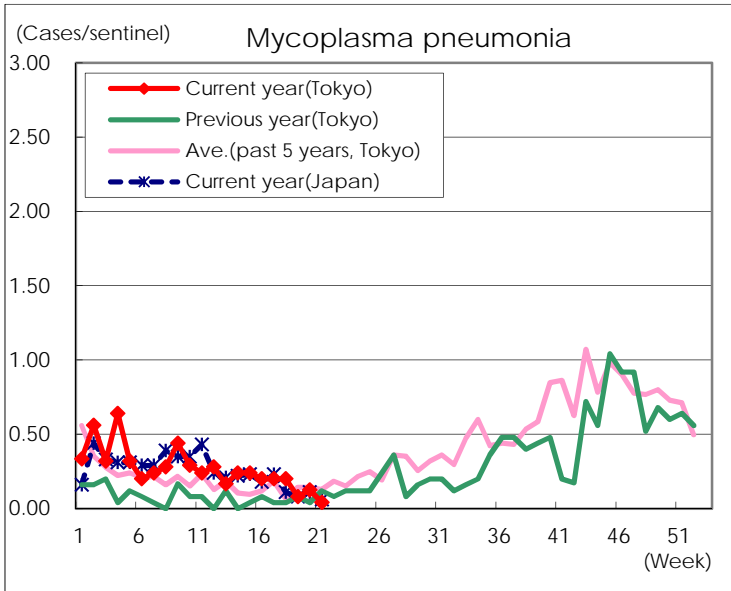
( Blank means 0. )

# Disease Trend Graph (weekly reported cases per sentinel in comparison)









Number of sentinel facilities for weekly reporting		
Types of sentinels	Number of sentinels	Sentinels having reported
Pediatric	264	258
Influenza	419	409
Ophthalmic	39	36
Specially-designated	25	24