

11 June 2020 / Number 23
(6/1 ~ 6/7)

Surveillance System in Tokyo, Japan

The infectious diseases which all physicians must report

All physicians must report to health centers the incidence of the diseases which are shown at page one. Health centers electronically report the individual cases to Tokyo Metropolitan Infectious Disease Surveillance Center.

The infectious diseases required to be reported by the sentinels

The numbers of patients who visit the sentinel clinics or hospitals during a week are reported to health centers in Tokyo. And they electronically report the numbers to Tokyo Metropolitan Infectious Disease Surveillance Center. We have about 500 sentinel clinics and hospitals in Tokyo.

Tokyo Metropolitan Institute of Public Health

TEL:81-3-3363-3213 FAX:81-3-5332-7365

e-mail:www@tokyo-eiken.go.jp

URL:idsc.tokyo-eiken.go.jp/

Number of patients with the diseases which all physicians must report

Category	Diseases	Tokyo					Japan	
		20th	21st	22nd	23rd	Cum 2020	23rd	Cum 2020
I	Ebola hemorrhagic fever							
	Crimean-Congo hemorrhagic fever							
	Smallpox							
	South American hemorrhagic fever							
	Plague							
	Marburg disease							
	Lassa fever							
II	Acute poliomyelitis							
	Tuberculosis	46	35	38	55	1,055	311	7,252
	Diphtheria							
	Severe Acute Respiratory Syndrome(SARS)							
	Middle East Respiratory Syndrome (MERS)							
	Avian influenza H5N1							
	Avian influenza H7N9							
※	Novel Coronavirus 2019 infection	79	51	110	146	5,516		
III	Cholera							
	Shigellosis					9		52
	Enterohemorrhagic Escherichia coli infection	1	2	2		45	39	477
	Typhoid fever					1		16
	Paratyphoid fever					1		7
IV	Hepatitis E	2		1	2	62	9	228
	West Nile fever							
	Hepatitis A					15	3	66
	Echinococcosis							7
	Yellow fever							
	Psittacosis							4
	Omsk hemorrhagic fever							
	Relapsing fever						1	1
	Kyasanur forest disease							
	Q fever							
	Rabies							1
	Coccidioidomycosis					1		2
	Monkeypox							
	Zika virus infection							1
	Severe Fever with Thrombocytopenia Syndrome						1	22
	Hemorrhagic fever with renal syndrome							
	Western equine encephalitis							
	Tick-borne encephalitis							
	Anthrax							
	Chikungunya fever							3
	Scrub typhus(Tsutsugamushi disease)					5	6	86
	Dengue fever					12		40
	Eastern equine encephalitis							
	Avian influenza (excluding H5N1 and H7N9)							
	Nipah virus infection							
	Japanese spotted fever						9	70
	Japanese encephalitis							1
	Hantavirus pulmonary syndrome							
	Herpes B virus infection							
	Glanders							
	Brucellosis							1
	Venezuelan equine encephalitis							
	Hendra virus infection							
Epidemic typhus								
Botulism								
Malaria					5		12	
Tularemia								
Lyme disease						1	3	
Lyssavirus infection(excluding rabies)								
Rift valley fever								
Melioidosis								
Legionellosis			3	4	33	26	569	
Leptospirosis							1	
Rocky mountain spotted fever								

Category	Diseases	Tokyo					Japan	
		20th	21st	22nd	23rd	Cum 2020	23rd	Cum 2020
V	Amebiasis		2	1	1	50	3	252
	Viral hepatitis(excluding hepatitis A and E)		3	2		29	3	113
	CRE infection	1	1	2		43	21	651
	Acute Flaccid Paralysis (excluding Acute poliomyelitis)					1		14
	Acute encephalitis(excluding JE and WNE)		1		1	19	5	291
	Cryptosporidiosis							2
	Creutzfeldt-Jakob disease	1	1			6	2	59
	Severe invasive streptococcal infections(TSLS)	1	1	2	3	44	12	361
	Acquired immunodeficiency syndrome (AIDS)	7	9	7	4	150	9	425
	Giardiasis					3		13
	Invasive <i>Haemophilus influenzae</i> disease	1		1		17		159
	Invasive meningococcal disease					1		11
	Invasive pneumococcal disease	1		2	1	99	16	942
	Varicella (limited to hospitalized case)	2	1			25	1	157
	Congenital rubella syndrome							1
	Syphilis	32	36	27	38	622	79	2,404
	Disseminated cryptococcosis					6	2	51
	Tetanus					3	1	44
	Vancomycin-resistant <i>S. aureus</i> infection							
	Vancomycin-resistant Enterococcus infection		1			5	4	58
Pertussis	6	4	1		214	17	2,475	
Rubella					20	1	77	
Measles					2		12	
MDRA infection							3	

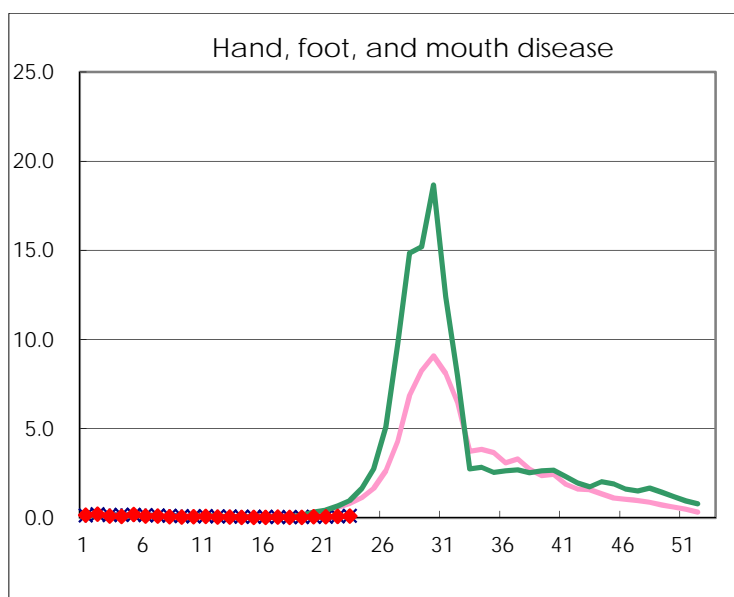
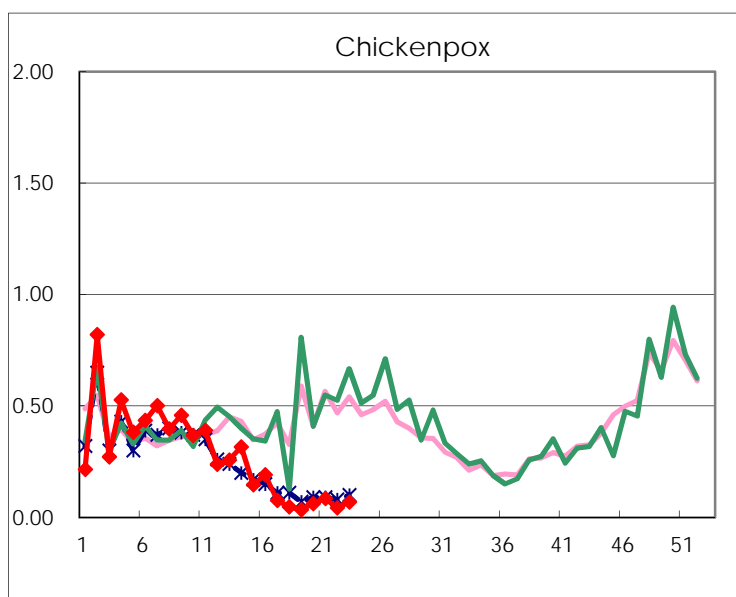
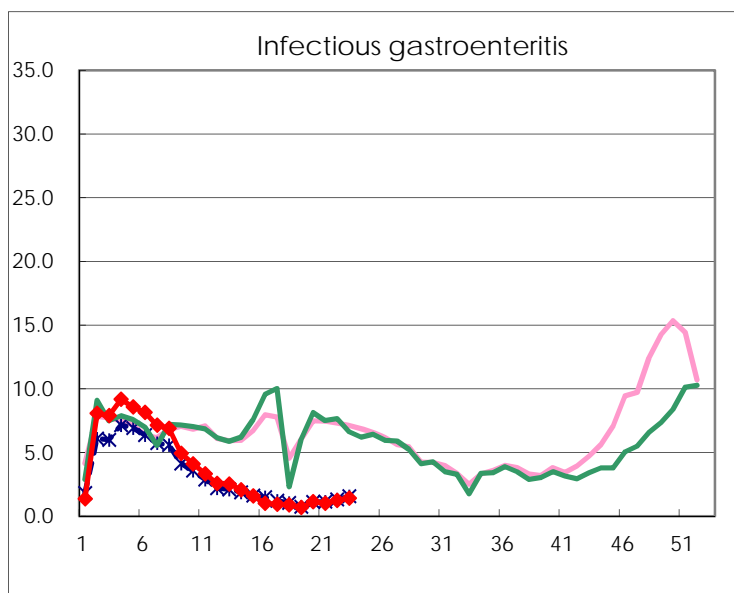
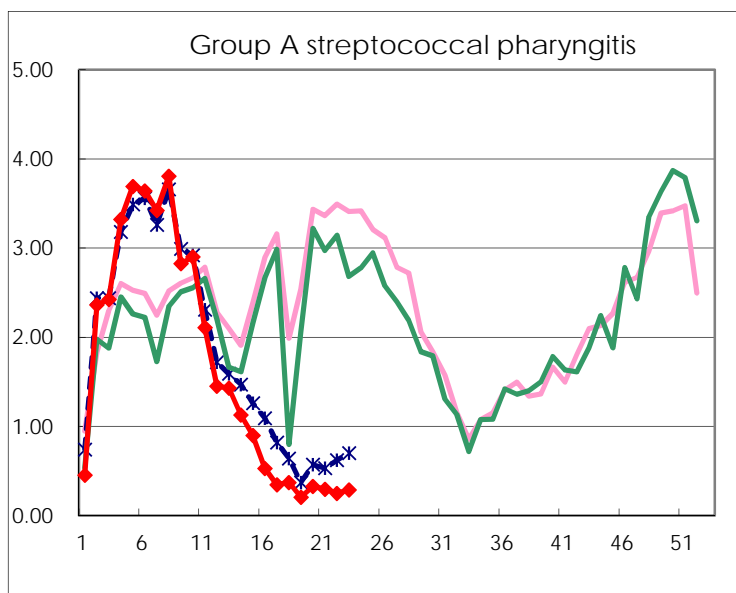
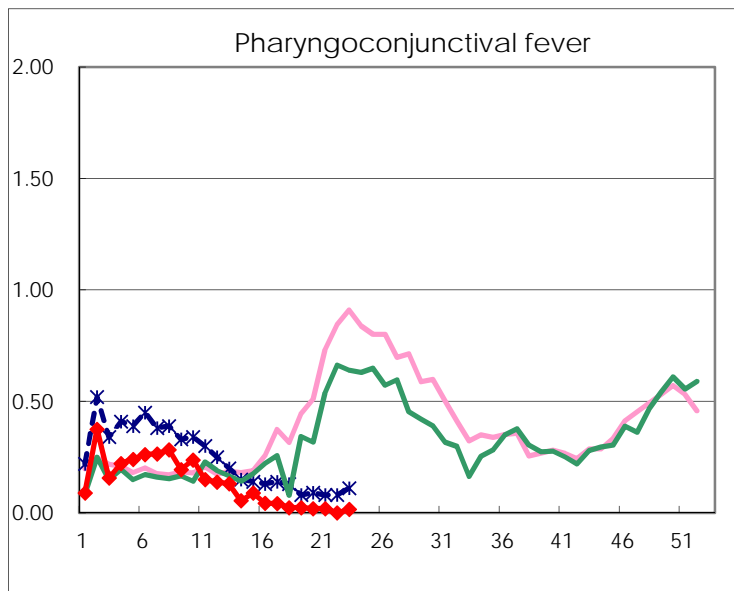
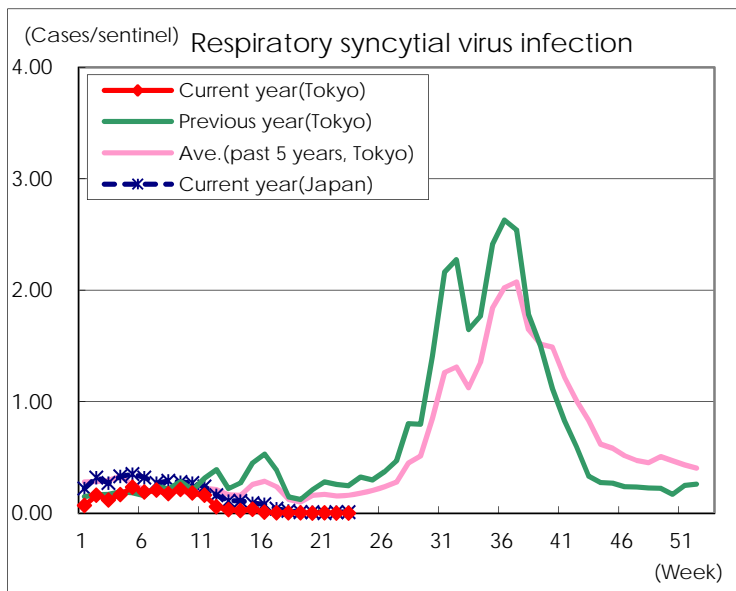
※ Designated infectious disease

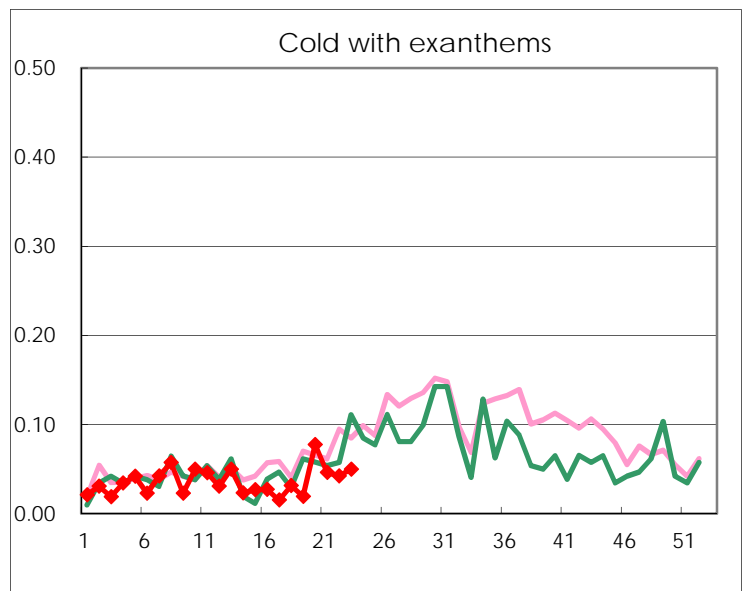
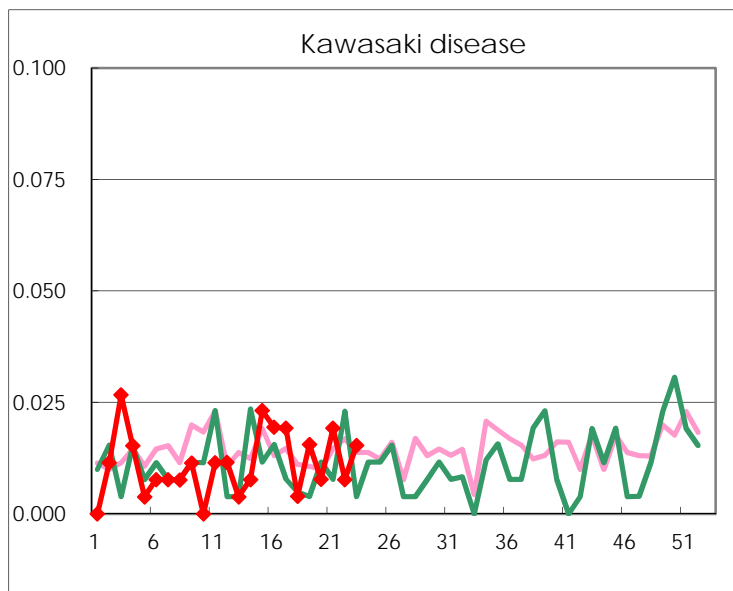
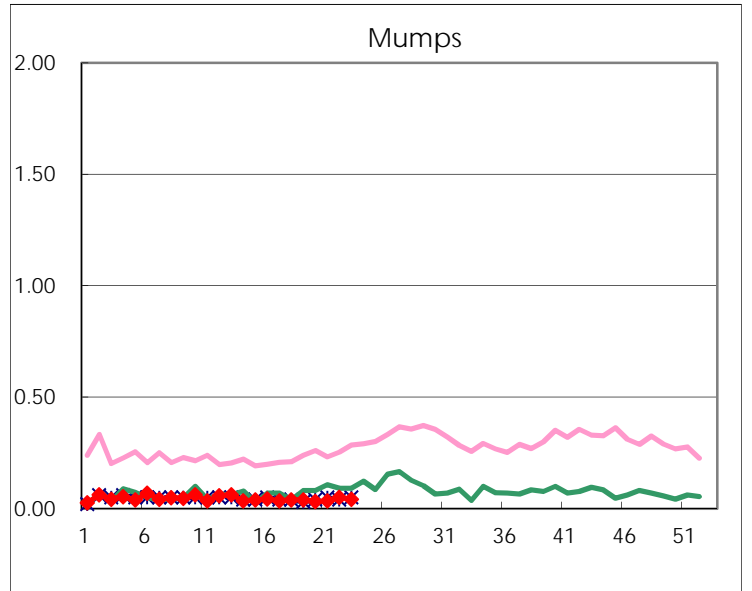
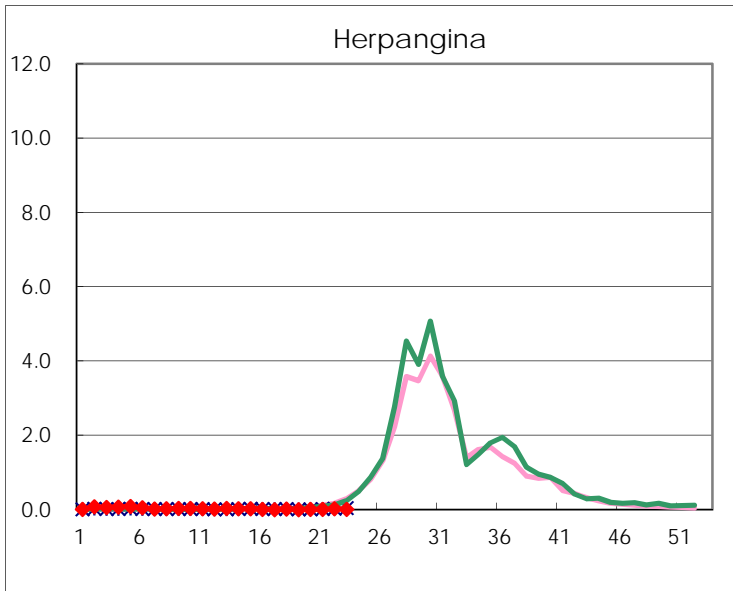
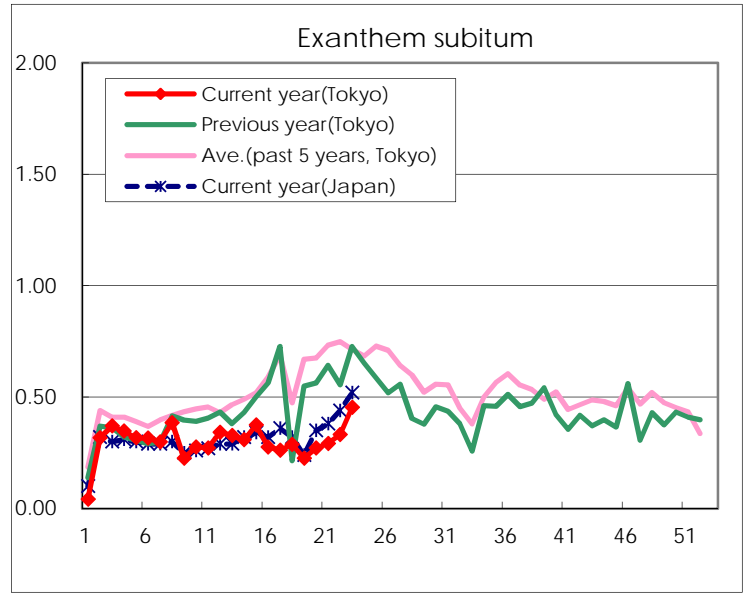
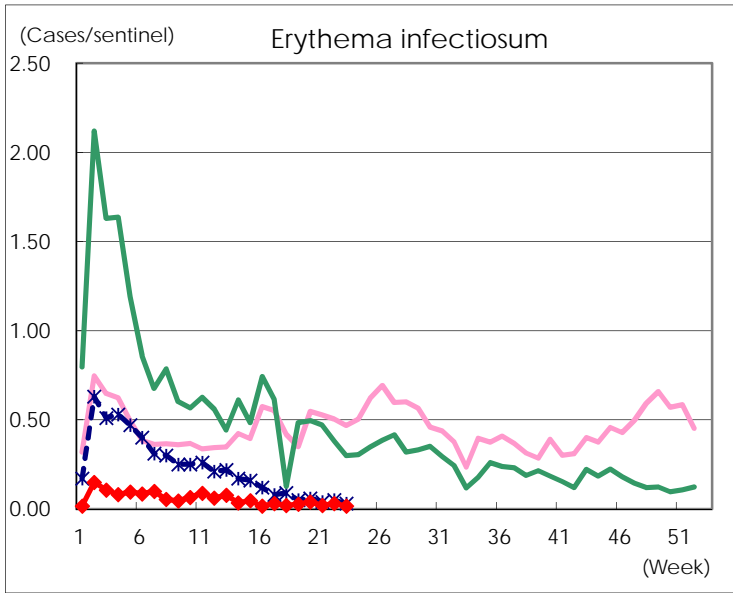
Number of patients with the diseases to be reported
by the designated clinics and hospitals

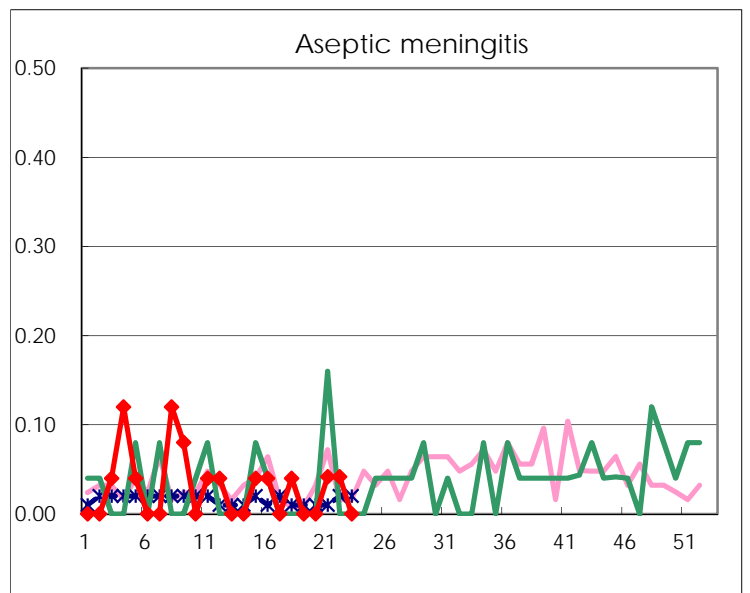
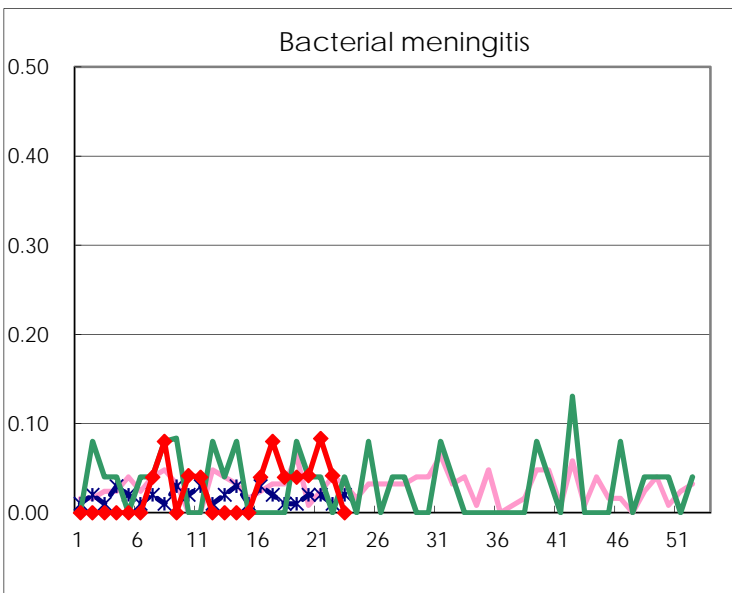
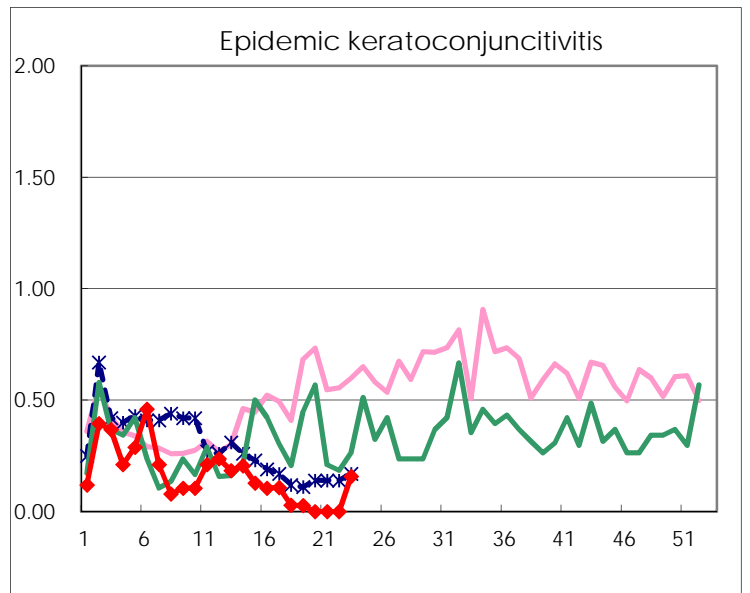
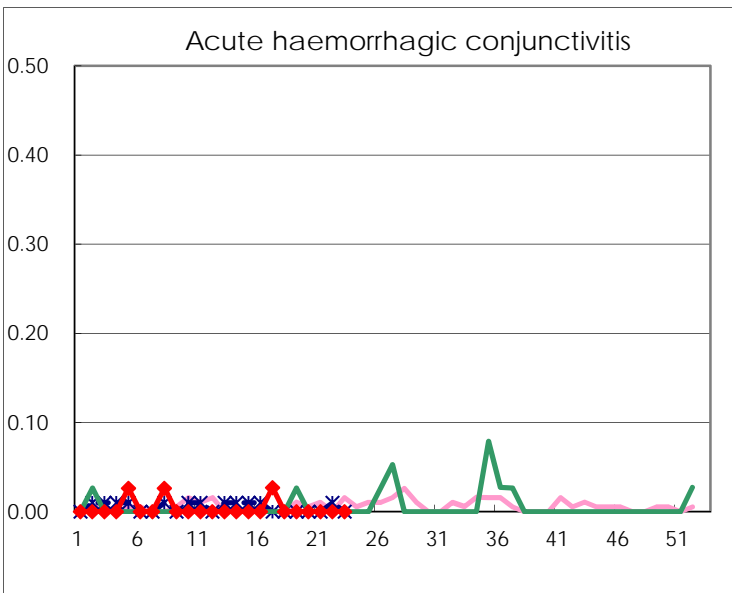
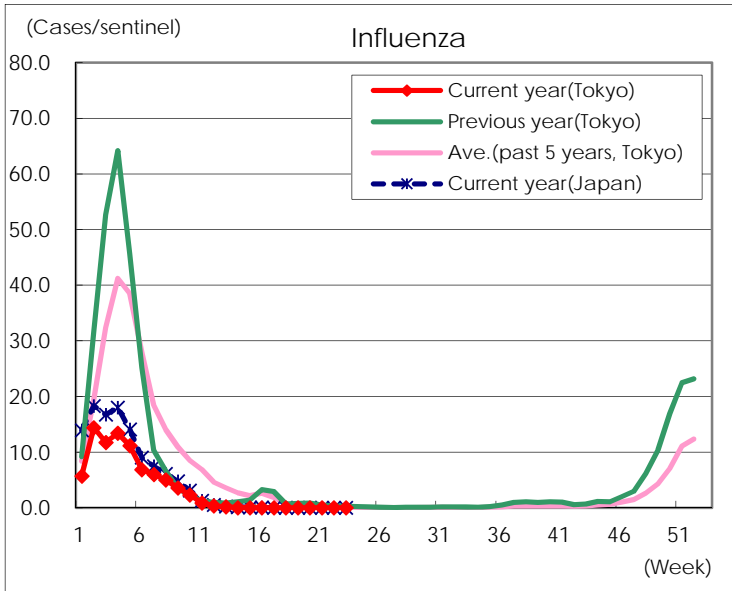
Diseases	Tokyo				
	20th	21st	22nd	23rd	/sentinel
Respiratory syncytial virus infection		1			
Pharyngoconjunctival fever	5	5		4	0.02
Group A streptococcal pharyngitis	84	77	64	75	0.29
Infectious gastroenteritis	291	262	319	367	1.41
Chickenpox	16	22	11	18	0.07
Hand, foot, and mouth disease	13	14	18	25	0.10
Erythema infectiosum	10	5	8	4	0.02
Exanthem subitum	70	76	86	118	0.45
Herpangina	3	2	6	3	0.01
Mumps	8	9	13	11	0.04
Kawasaki disease	2	5	2	4	0.02
Cold with exanthems	20	12	11	13	0.05
Influenza		1			
Acute hemorrhagic conjunctivitis					
Epidemic keratoconjunctivitis				6	0.16
Bacterial meningitis	1	2	1		
Aseptic meningitis		1	1		
Mycoplasma pneumonia	3	1	1	2	0.08
Chlamydial pneumonia (excluding psittacosis)					
Infectious gastroenteritis (only by Rotavirus)					
Influenza-Associated Hospitalizations					

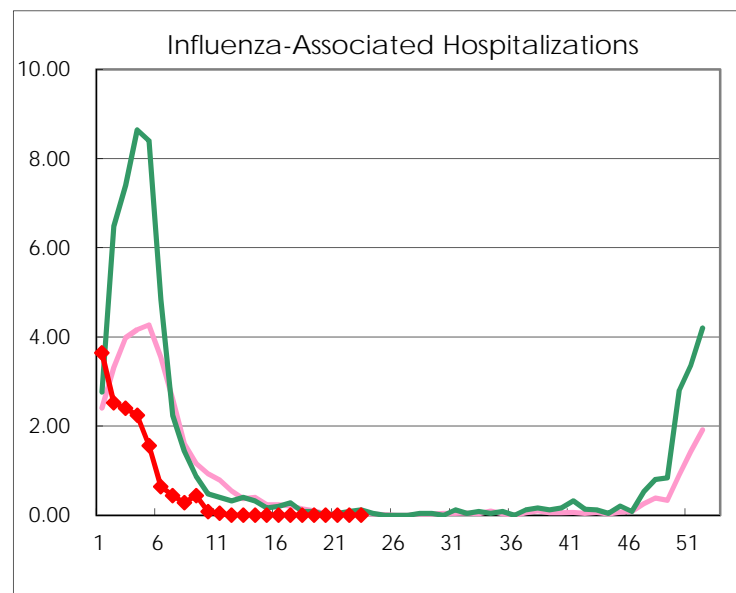
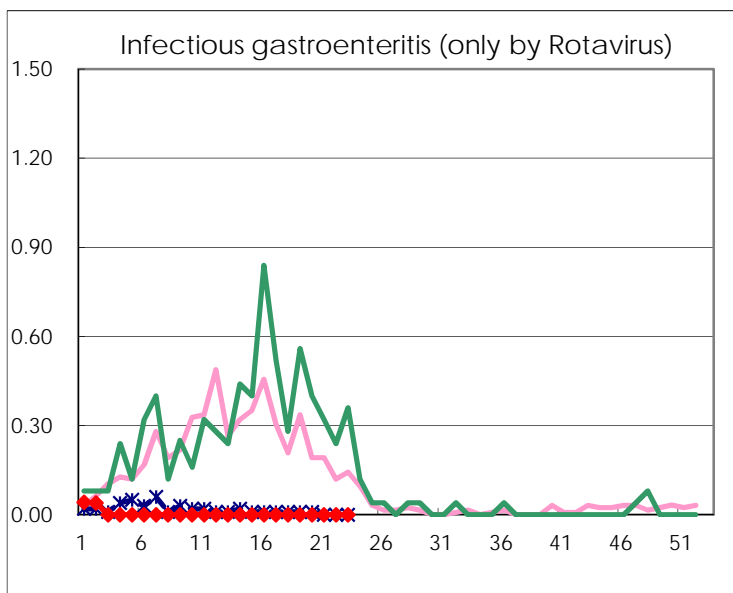
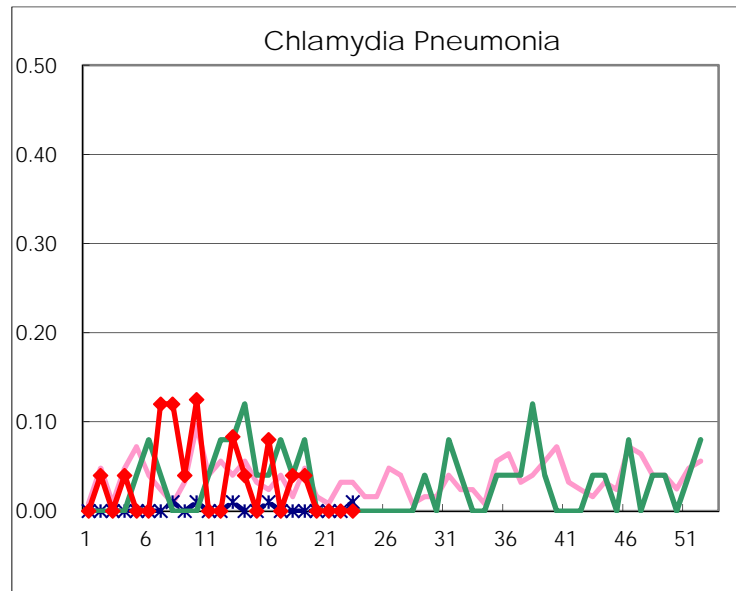
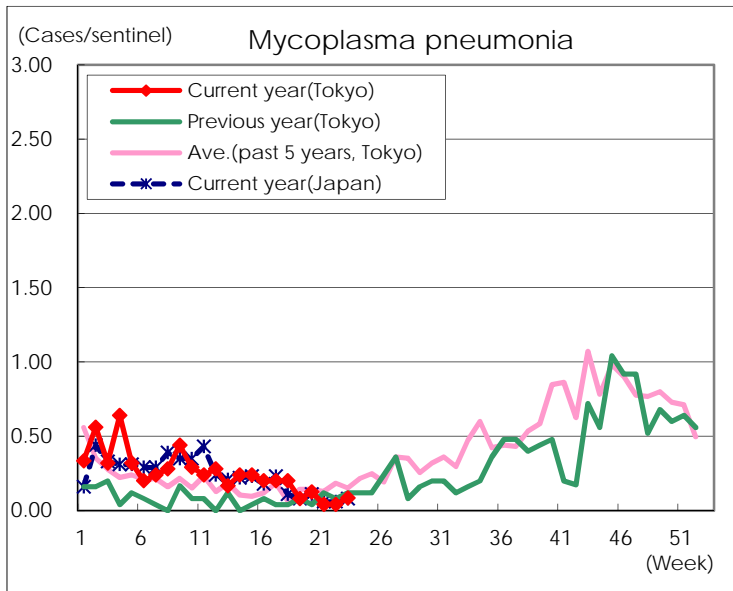
(Blank means 0.)

Disease Trend Graph (weekly reported cases per sentinel in comparison)









Number of sentinel facilities for weekly reporting		
Types of sentinels	Number of sentinels	Sentinels having reported
Pediatric	264	260
Influenza	419	411
Ophthalmic	39	38
Specially-designated	25	24