

18 June 2020 / Number 24
(6/8 ~ 6/14)

Surveillance System in Tokyo, Japan

The infectious diseases which all physicians must report

All physicians must report to health centers the incidence of the diseases which are shown at page one. Health centers electronically report the individual cases to Tokyo Metropolitan Infectious Disease Surveillance Center.

The infectious diseases required to be reported by the sentinels

The numbers of patients who visit the sentinel clinics or hospitals during a week are reported to health centers in Tokyo. And they electronically report the numbers to Tokyo Metropolitan Infectious Disease Surveillance Center. We have about 500 sentinel clinics and hospitals in Tokyo.

Tokyo Metropolitan Institute of Public Health

TEL:81-3-3363-3213 FAX:81-3-5332-7365

e-mail:www@tokyo-eiken.go.jp

URL:idsc.tokyo-eiken.go.jp/

Number of patients with the diseases which all physicians must report

Category	Diseases	Tokyo					Japan		
		21st	22nd	23rd	24th	Cum 2020	24th	Cum 2020	
I	Ebola hemorrhagic fever								
	Crimean-Congo hemorrhagic fever								
	Smallpox								
	South American hemorrhagic fever								
	Plague								
	Marburg disease								
	Lassa fever								
II	Acute poliomyelitis								
	Tuberculosis	36	43	56	31	1,093	268	7,596	
	Diphtheria								
	Severe Acute Respiratory Syndrome(SARS)								
	Middle East Respiratory Syndrome (MERS)								
	Avian influenza H5N1								
	Avian influenza H7N9								
※	Novel Coronavirus 2019 infection	51	110	146	215	5,730			
III	Cholera								
	Shigellosis					9		52	
	Enterohemorrhagic Escherichia coli infection	2	2		2	47	54	535	
	Typhoid fever					1		16	
	Paratyphoid fever					1		7	
IV	Hepatitis E		1	2	3	65	8	237	
	West Nile fever								
	Hepatitis A				2	17	2	70	
	Echinococcosis							7	
	Yellow fever								
	Psittacosis							4	
	Omsk hemorrhagic fever								
	Relapsing fever						1	2	
	Kyasanur forest disease								
	Q fever								
	Rabies							1	
	Coccidioidomycosis					1		2	
	Monkeypox								
	Zika virus infection							1	
	Severe Fever with Thrombocytopenia Syndrome						4	26	
	Hemorrhagic fever with renal syndrome								
	Western equine encephalitis								
	Tick-borne encephalitis								
	Anthrax								
	Chikungunya fever								3
	Scrub typhus(Tsutsugamushi disease)					5	9	95	
	Dengue fever					12		40	
	Eastern equine encephalitis								
	Avian influenza (excluding H5N1 and H7N9)								
	Nipah virus infection								
	Japanese spotted fever						12	85	
	Japanese encephalitis							1	
	Hantavirus pulmonary syndrome								
	Herpes B virus infection								
	Glanders								
	Brucellosis							1	
	Venezuelan equine encephalitis								
	Hendra virus infection								
Epidemic typhus									
Botulism									
Malaria					5		12		
Tularemia									
Lyme disease						1	4		
Lyssavirus infection(excluding rabies)									
Rift valley fever									
Melioidosis									
Legionellosis		3	4	4	37	23	597		
Leptospirosis							1		
Rocky mountain spotted fever									

Category	Diseases	Tokyo					Japan	
		21st	22nd	23rd	24th	Cum 2020	24th	Cum 2020
V	Amebiasis	2	1	1	1	51	11	263
	Viral hepatitis(excluding hepatitis A and E)	3	2		2	31	3	120
	CRE infection	1	2	1	1	47	27	689
	Acute Flaccid Paralysis (excluding Acute poliomyelitis)					1	1	15
	Acute encephalitis(excluding JE and WNE)	1		1	1	20	6	298
	Cryptosporidiosis							2
	Creutzfeldt-Jakob disease	1				6	1	62
	Severe invasive streptococcal infections(TSLS)	1	2	3	3	47	8	377
	Acquired immunodeficiency syndrome (AIDS)	9	10	5	6	160	17	457
	Giardiasis					3		13
	Invasive <i>Haemophilus influenzae</i> disease		1			17	3	162
	Invasive meningococcal disease					1		11
	Invasive pneumococcal disease		3	1	4	104	21	970
	Varicella (limited to hospitalized case)	1				25	6	164
	Congenital rubella syndrome							1
	Syphilis	45	31	40	26	665	66	2,524
	Disseminated cryptococcosis				1	7	1	55
	Tetanus					3		45
	Vancomycin-resistant <i>S. aureus</i> infection							
	Vancomycin-resistant Enterococcus infection	1			1	6	2	61
Pertussis	4	1		3	217	15	2,502	
Rubella					20	1	79	
Measles					2		12	
MDRA infection							3	

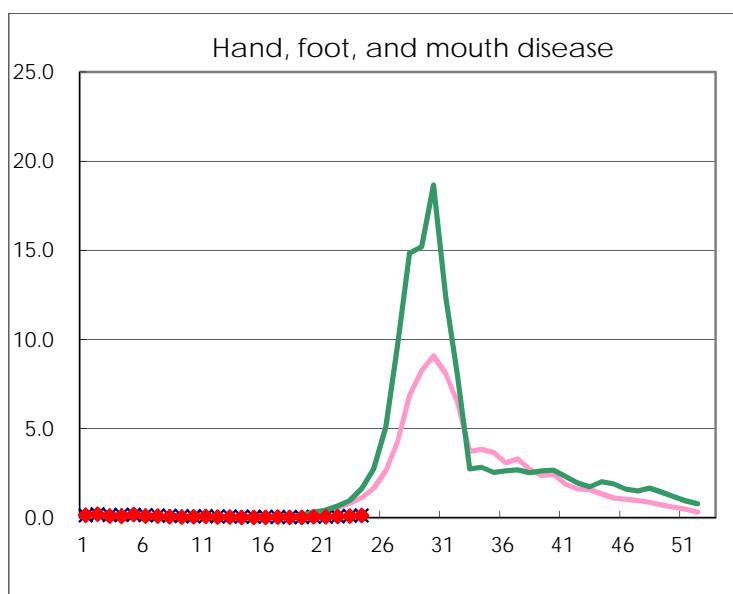
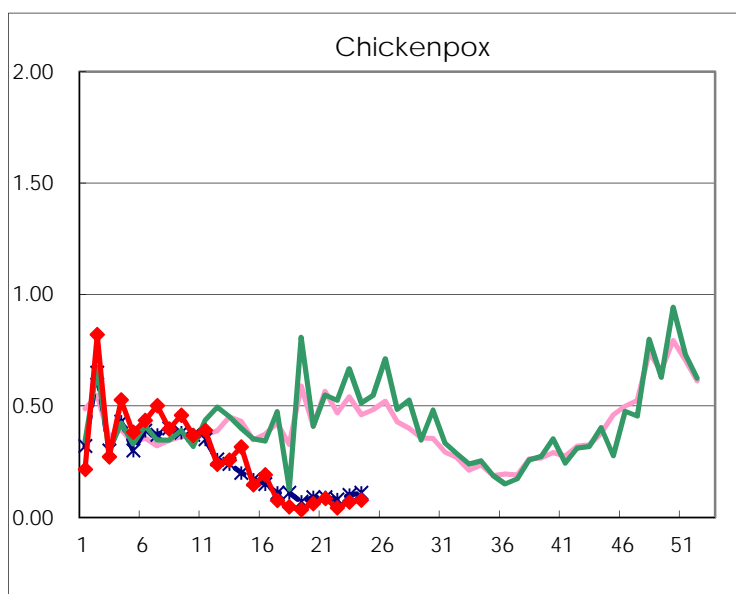
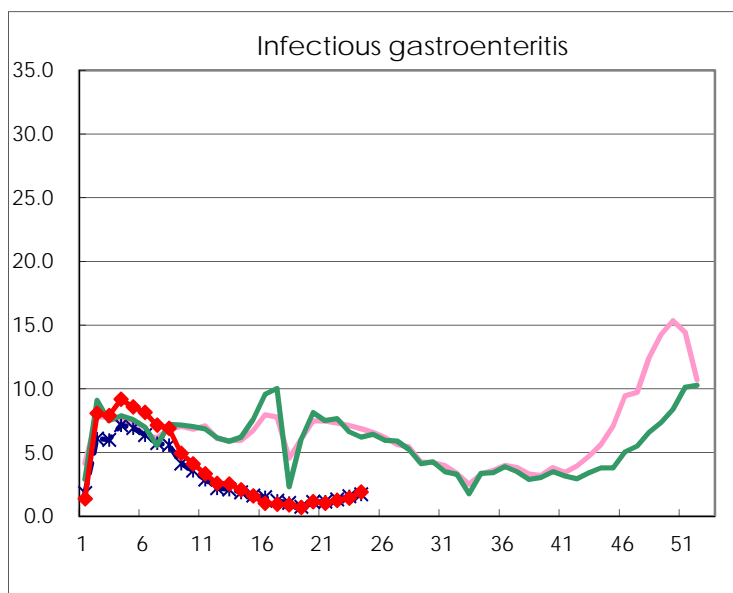
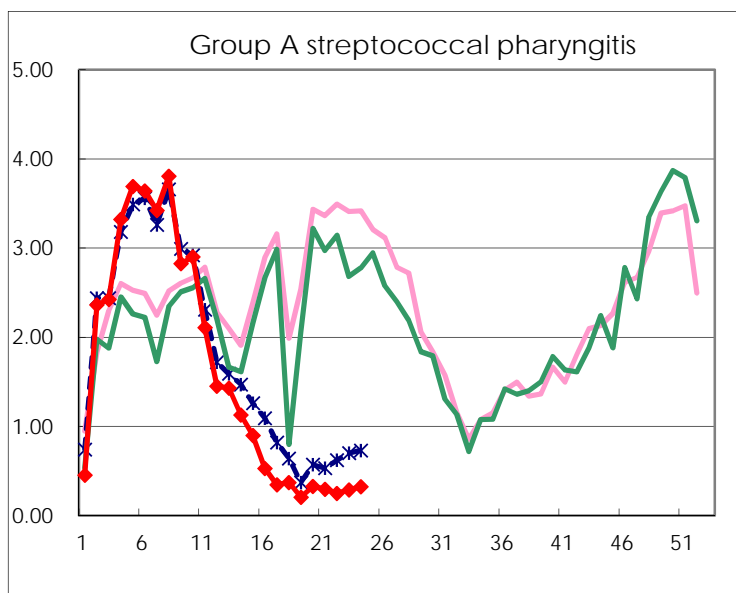
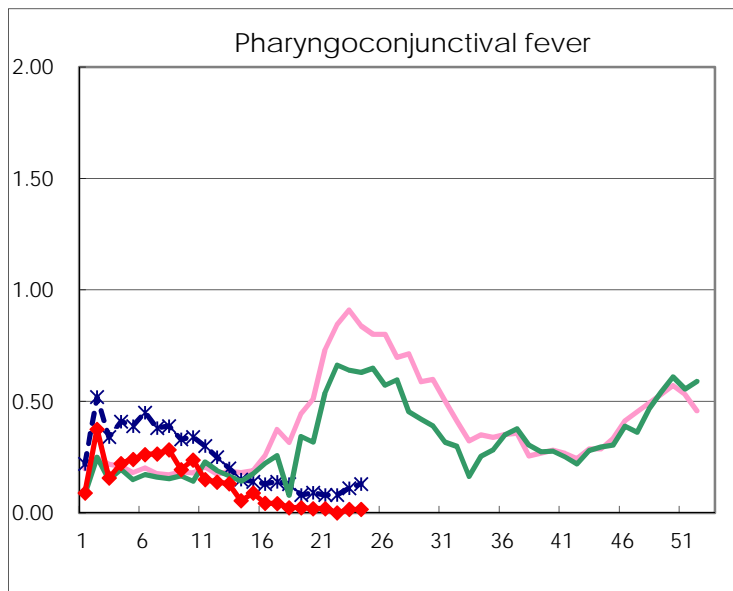
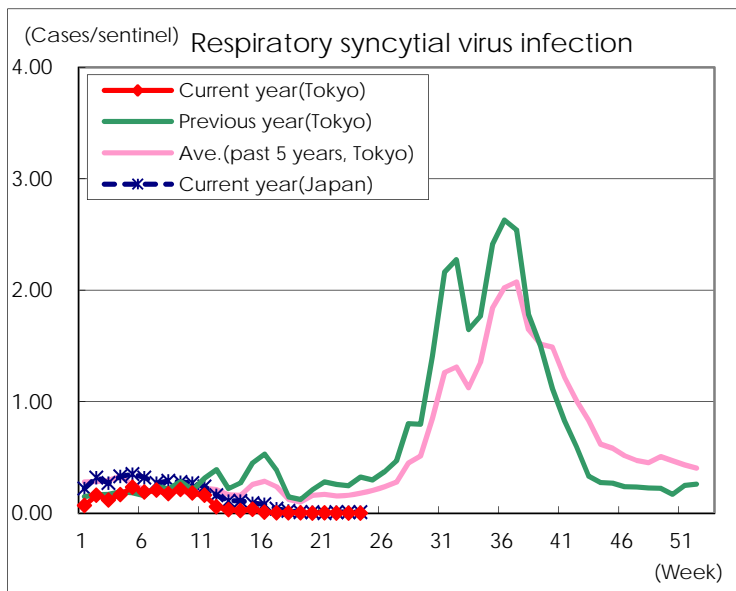
※ Designated infectious disease

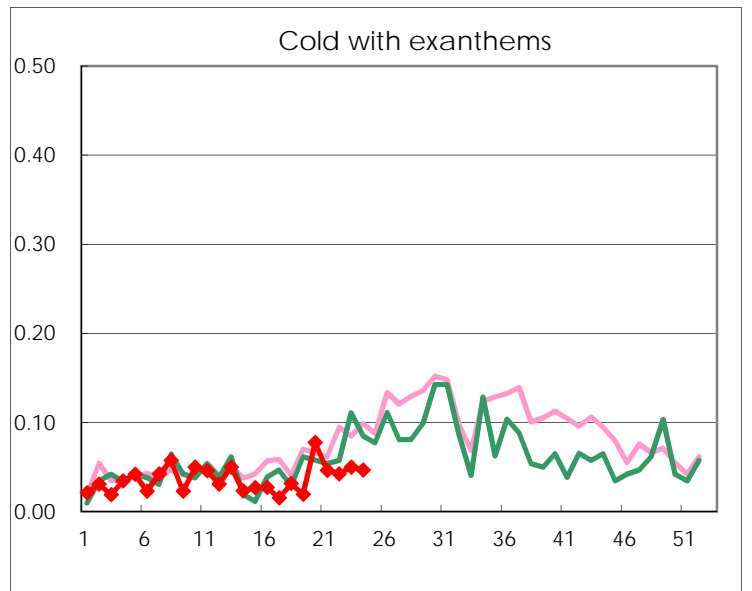
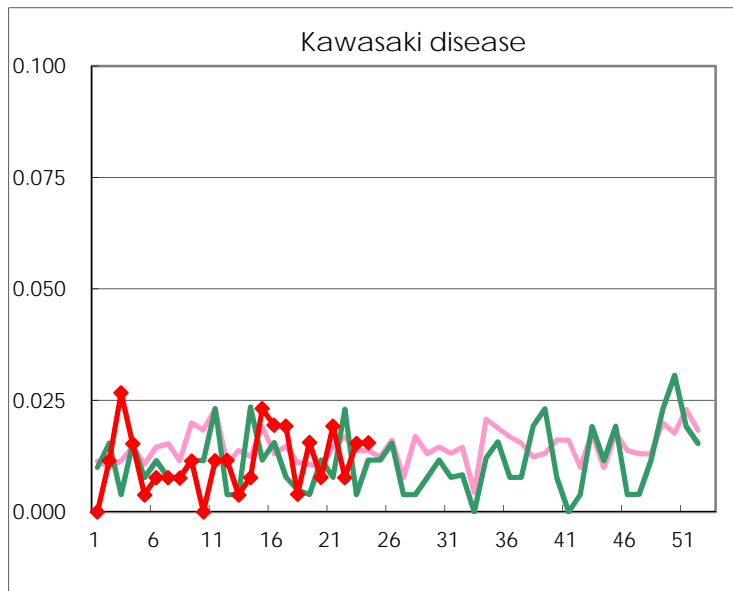
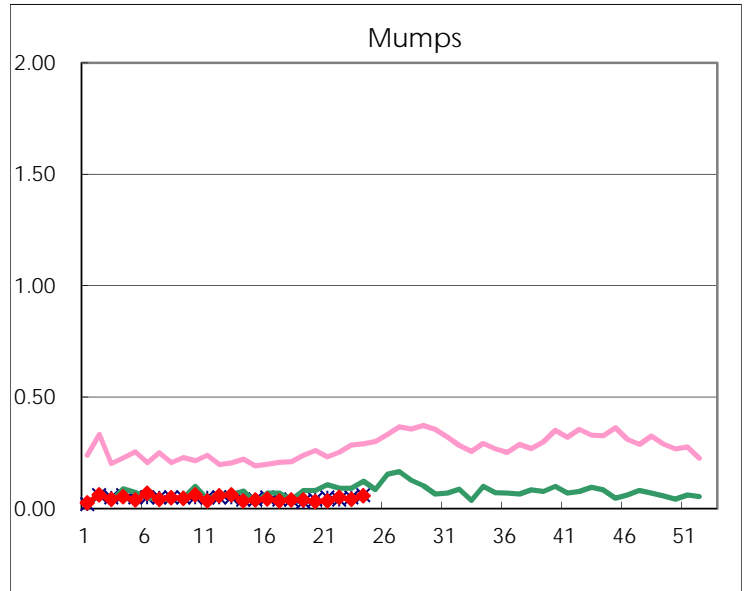
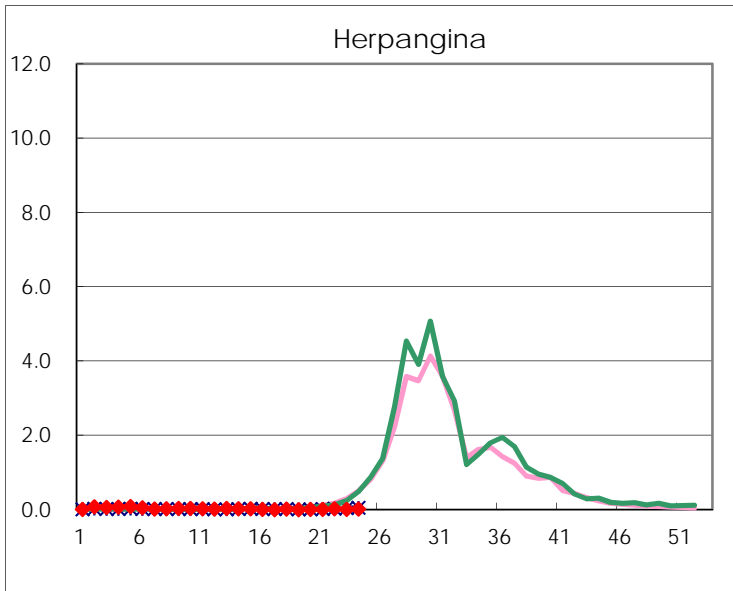
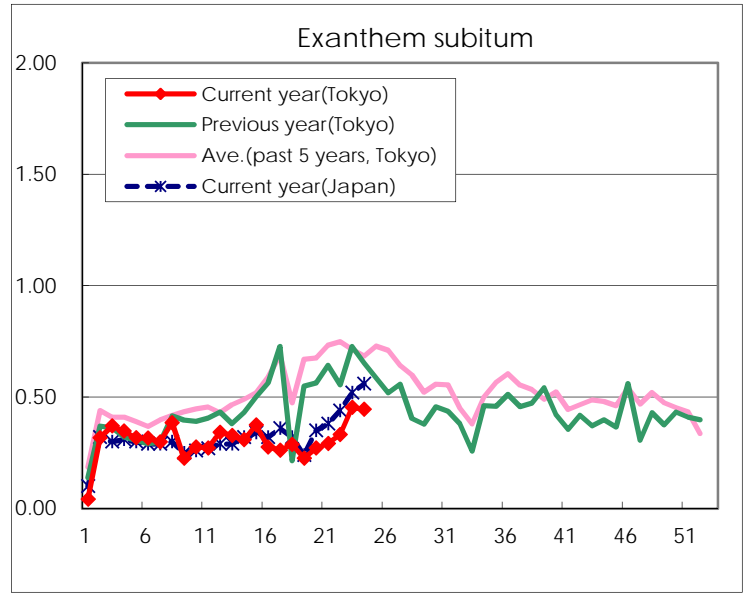
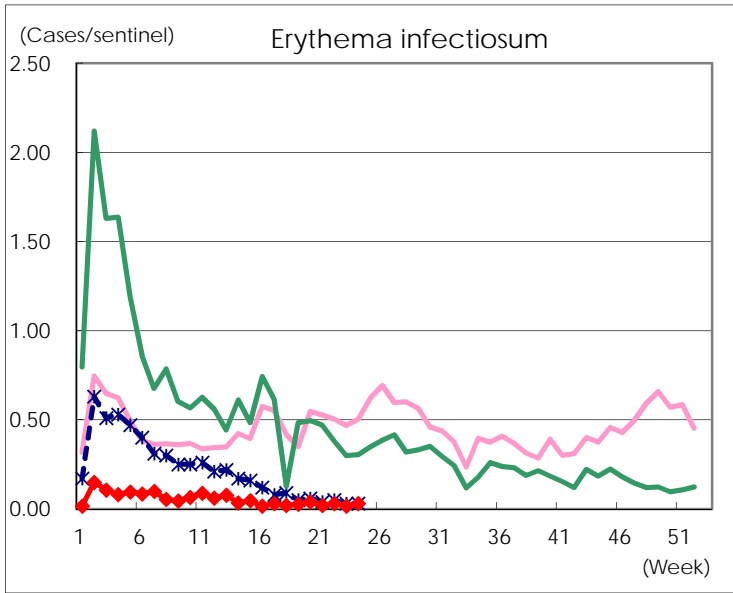
Number of patients with the diseases to be reported
by the designated clinics and hospitals

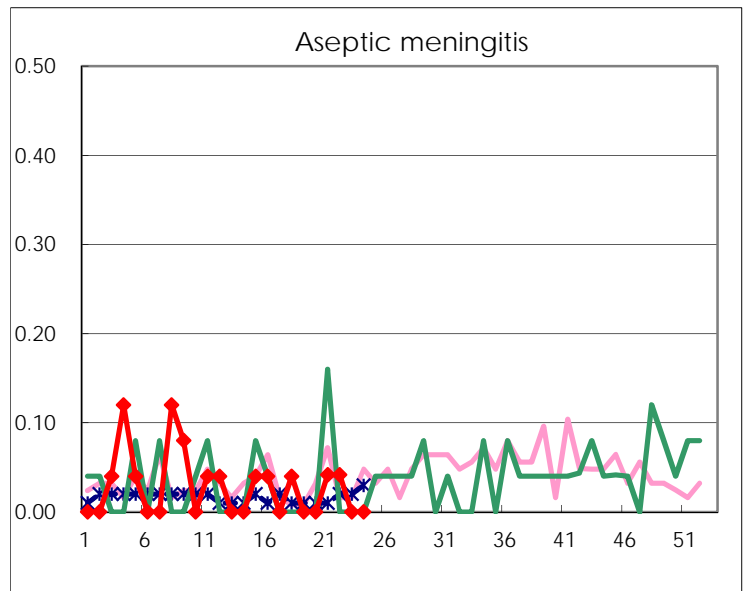
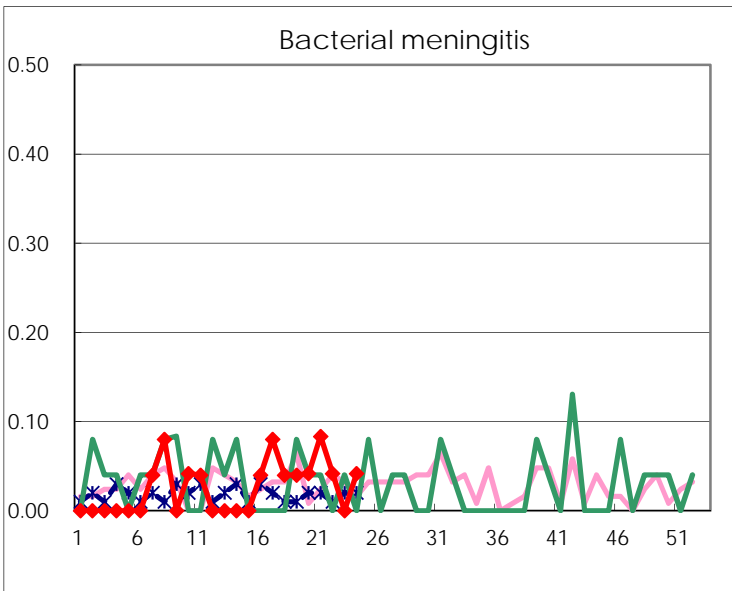
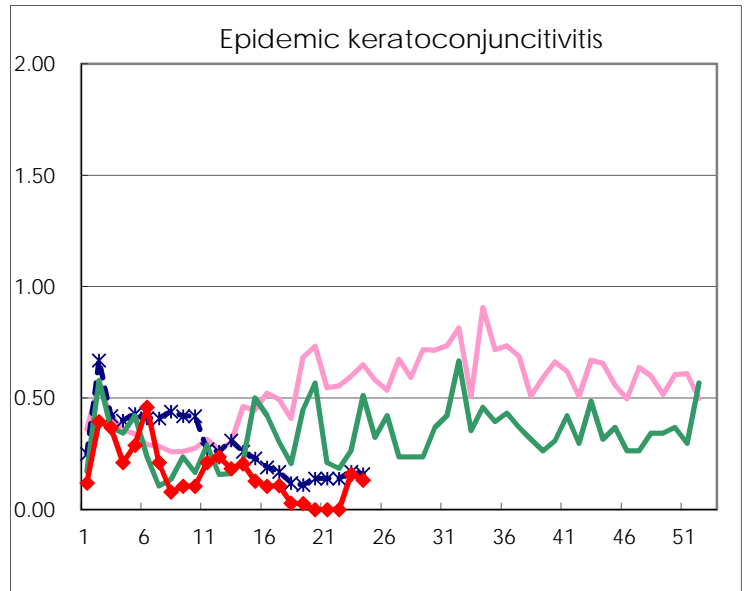
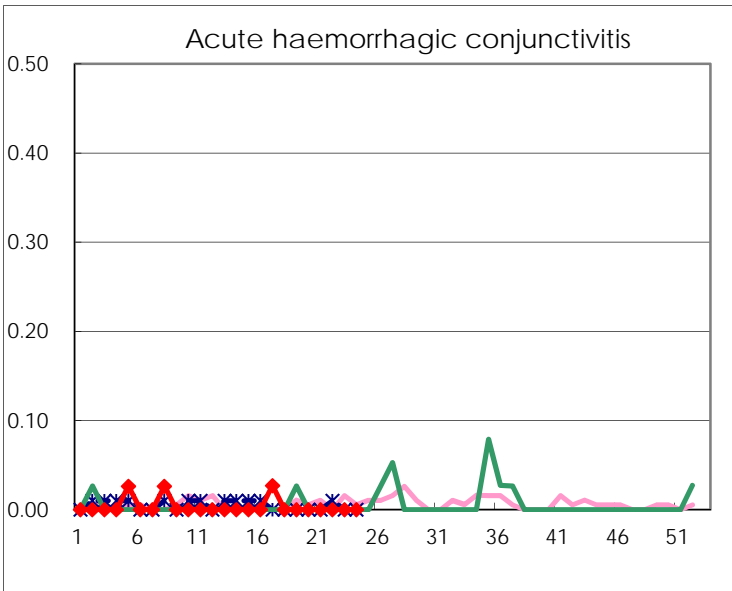
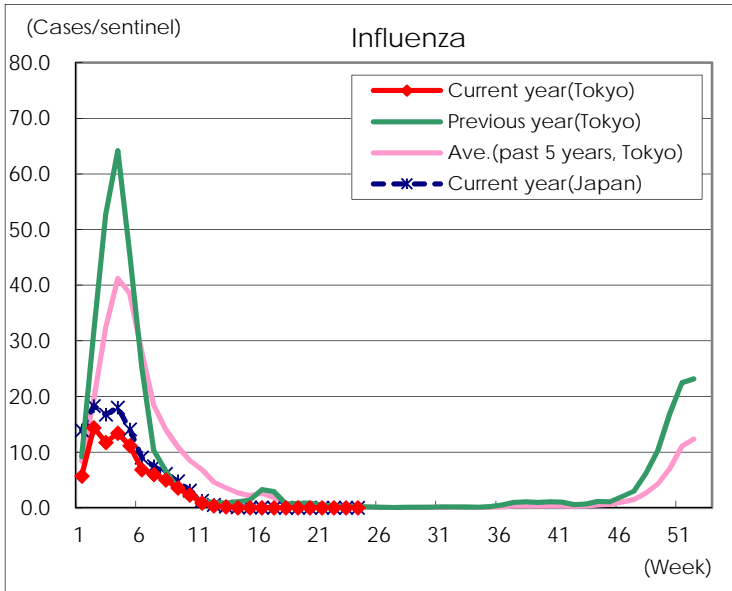
Diseases	Tokyo				
	21st	22nd	23rd	24th	/sentinel
Respiratory syncytial virus infection	1				
Pharyngoconjunctival fever	5		4	4	0.02
Group A streptococcal pharyngitis	77	64	75	83	0.32
Infectious gastroenteritis	262	319	367	489	1.90
Chickenpox	22	11	18	20	0.08
Hand, foot, and mouth disease	14	18	25	35	0.14
Erythema infectiosum	5	8	4	8	0.03
Exanthem subitum	76	86	118	115	0.45
Herpangina	2	6	3	4	0.02
Mumps	9	13	11	15	0.06
Kawasaki disease	5	2	4	4	0.02
Cold with exanths	12	11	13	12	0.05
Influenza	1				
Acute hemorrhagic conjunctivitis					
Epidemic keratoconjunctivitis			6	5	0.13
Bacterial meningitis	2	1		1	0.04
Aseptic meningitis	1	1			
Mycoplasma pneumonia	1	1	2	4	0.17
Chlamydial pneumonia (excluding psittacosis)				1	0.04
Infectious gastroenteritis (only by Rotavirus)					
Influenza-Associated Hospitalizations					

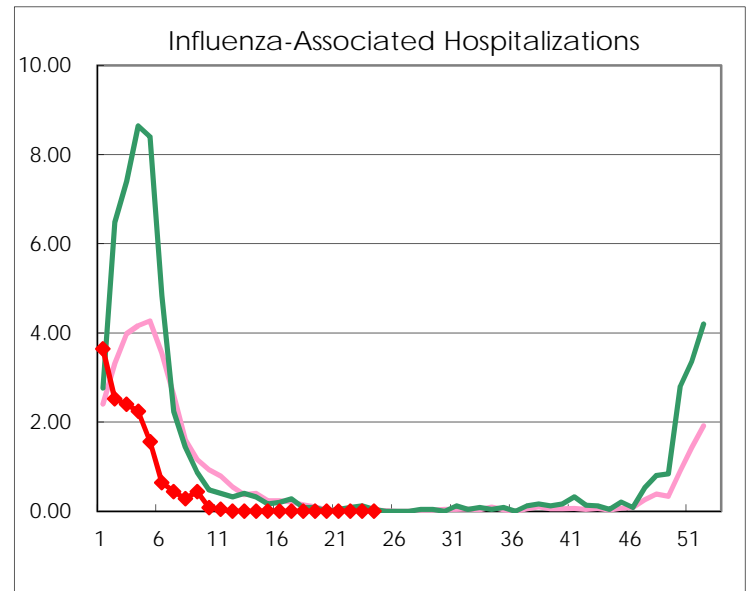
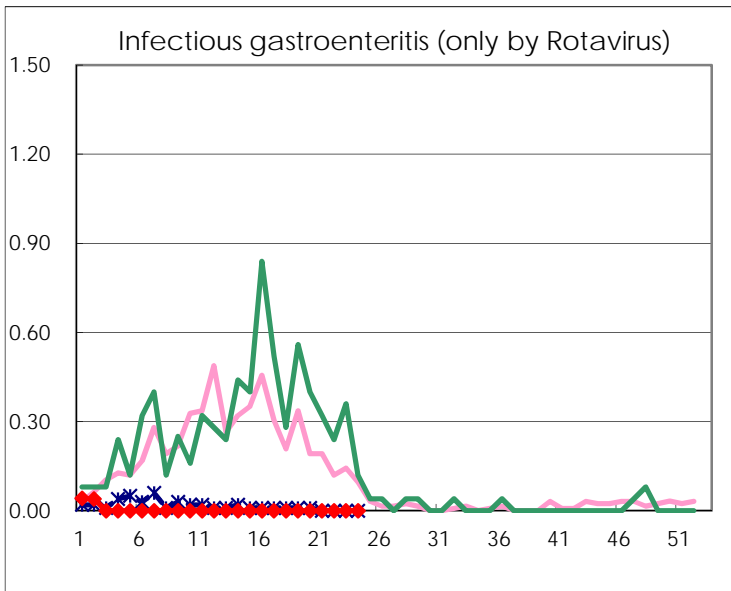
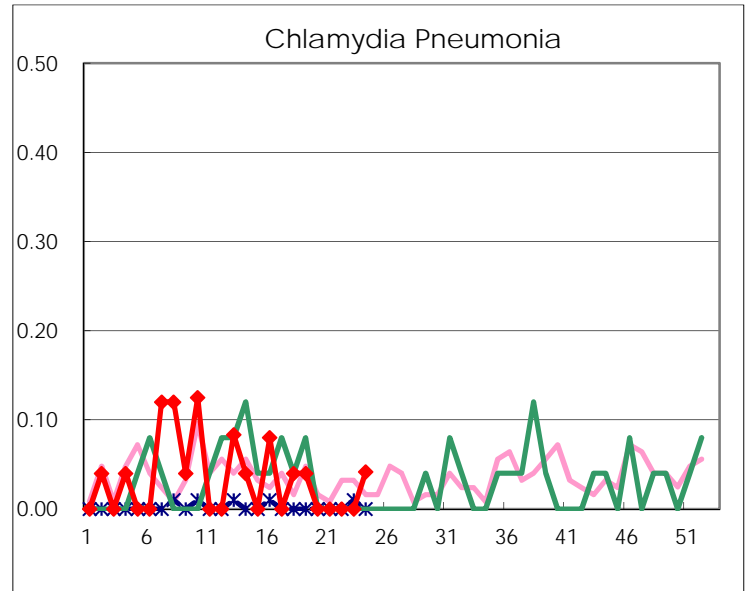
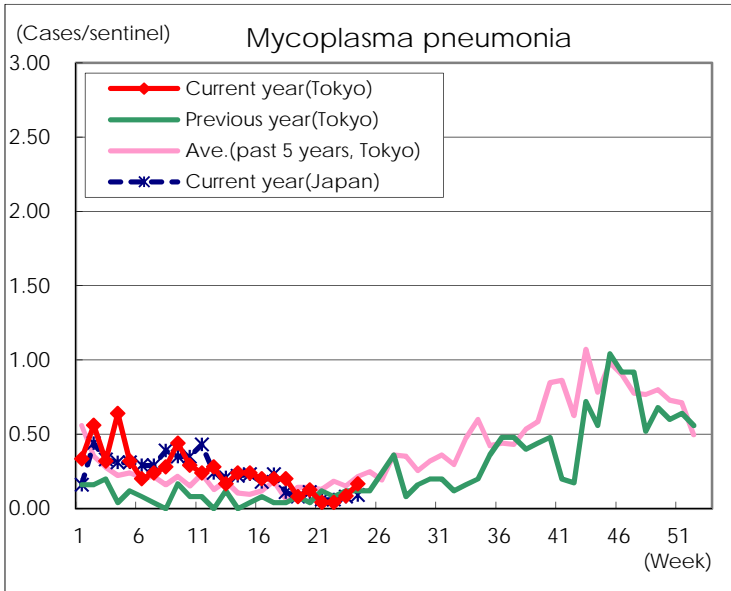
(Blank means 0.)

Disease Trend Graph (weekly reported cases per sentinel in comparison)









Number of sentinel facilities for weekly reporting		
Types of sentinels	Number of sentinels	Sentinels having reported
Pediatric	264	258
Influenza	419	412
Ophthalmic	39	38
Specially-designated	25	24