

25 June 2020 / Number 25
(6/15 ~ 6/21)

Surveillance System in Tokyo, Japan

The infectious diseases which all physicians must report

All physicians must report to health centers the incidence of the diseases which are shown at page one. Health centers electronically report the individual cases to Tokyo Metropolitan Infectious Disease Surveillance Center.

The infectious diseases required to be reported by the sentinels

The numbers of patients who visit the sentinel clinics or hospitals during a week are reported to health centers in Tokyo. And they electronically report the numbers to Tokyo Metropolitan Infectious Disease Surveillance Center. We have about 500 sentinel clinics and hospitals in Tokyo.

Tokyo Metropolitan Institute of Public Health

TEL:81-3-3363-3213 FAX:81-3-5332-7365

e-mail:www@tokyo-eiken.go.jp

URL:idsc.tokyo-eiken.go.jp/

Number of patients with the diseases which all physicians must report

Category	Diseases	Tokyo					Japan	
		22nd	23rd	24th	25th	Cum 2020	25th	Cum 2020
I	Ebola hemorrhagic fever							
	Crimean-Congo hemorrhagic fever							
	Smallpox							
	South American hemorrhagic fever							
	Plague							
	Marburg disease							
	Lassa fever							
II	Acute poliomyelitis							
	Tuberculosis	44	59	33	49	1,148	304	7,972
	Diphtheria							
	Severe Acute Respiratory Syndrome(SARS)							
	Middle East Respiratory Syndrome (MERS)							
	Avian influenza H5N1							
	Avian influenza H7N9							
※	Novel Coronavirus 2019 infection	110	146	214	209	5,940		
III	Cholera							
	Shigellosis					9	1	53
	Enterohemorrhagic Escherichia coli infection	2		2	9	56	94	638
	Typhoid fever					1	1	17
	Paratyphoid fever					1		7
IV	Hepatitis E	1	2	3		65	3	240
	West Nile fever							
	Hepatitis A			2	1	18	3	73
	Echinococcosis							7
	Yellow fever							
	Psittacosis							4
	Omsk hemorrhagic fever							
	Relapsing fever							2
	Kyasanur forest disease							
	Q fever							
	Rabies							1
	Coccidioidomycosis					1		2
	Monkeypox							
	Zika virus infection							1
	Severe Fever with Thrombocytopenia Syndrome						4	31
	Hemorrhagic fever with renal syndrome							
	Western equine encephalitis							
	Tick-borne encephalitis							
	Anthrax							
	Chikungunya fever							
	Scrub typhus(Tsutsugamushi disease)					5	4	100
	Dengue fever					12	1	41
	Eastern equine encephalitis							
	Avian influenza (excluding H5N1 and H7N9)							
	Nipah virus infection							
	Japanese spotted fever						3	90
	Japanese encephalitis							1
	Hantavirus pulmonary syndrome							
	Herpes B virus infection							
	Glanders							
	Brucellosis							1
	Venezuelan equine encephalitis							
	Hendra virus infection							
	Epidemic typhus							
Botulism						1	1	
Malaria					5		12	
Tularemia								
Lyme disease							4	
Lyssavirus infection(excluding rabies)								
Rift valley fever								
Melioidosis								
Legionellosis	3	4	4	2	39	24	625	
Leptospirosis							1	
Rocky mountain spotted fever								

Category	Diseases	Tokyo					Japan	
		22nd	23rd	24th	25th	Cum 2020	25th	Cum 2020
V	Amebiasis	1	1	1	5	56	10	279
	Viral hepatitis(excluding hepatitis A and E)	2		2		31	1	124
	CRE infection	2	2	1	3	51	24	728
	Acute Flaccid Paralysis (excluding Acute poliomyelitis)					1		15
	Acute encephalitis(excluding JE and WNE)		1	1		21	3	305
	Cryptosporidiosis							2
	Creutzfeldt-Jakob disease				1	7	1	64
	Severe invasive streptococcal infections(TSLS)	2	3	3		47	12	391
	Acquired immunodeficiency syndrome (AIDS)	10	5	6	9	169	8	475
	Giardiasis					3		13
	Invasive <i>Haemophilus influenzae</i> disease	1				17	4	167
	Invasive meningococcal disease					1		11
	Invasive pneumococcal disease	3	1	4		104	11	985
	Varicella (limited to hospitalized case)					25	3	172
	Congenital rubella syndrome							1
	Syphilis	31	40	27	46	712	98	2,669
	Disseminated cryptococcosis			1		7	1	59
	Tetanus				1	4	2	48
	Vancomycin-resistant <i>S. aureus</i> infection							
	Vancomycin-resistant Enterococcus infection			1		6	3	67
Pertussis	1		3	4	221	15	2,525	
Rubella					20	1	80	
Measles					2		12	
MDRA infection							3	

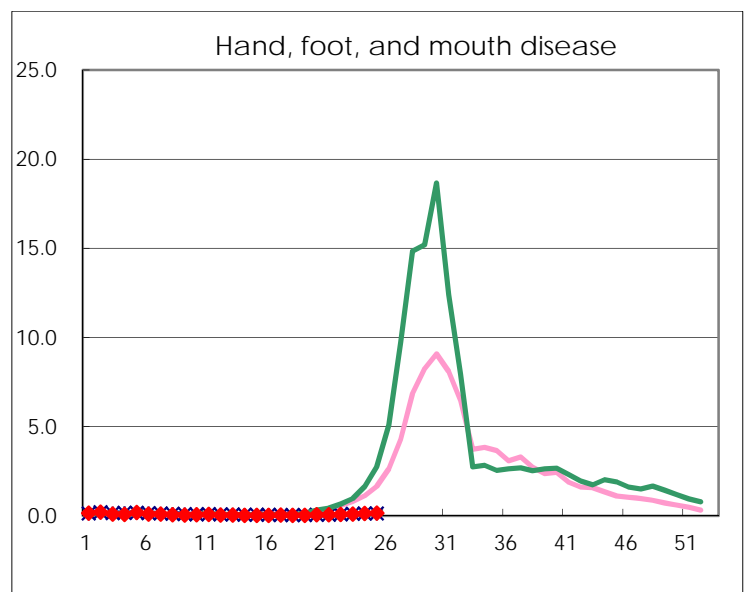
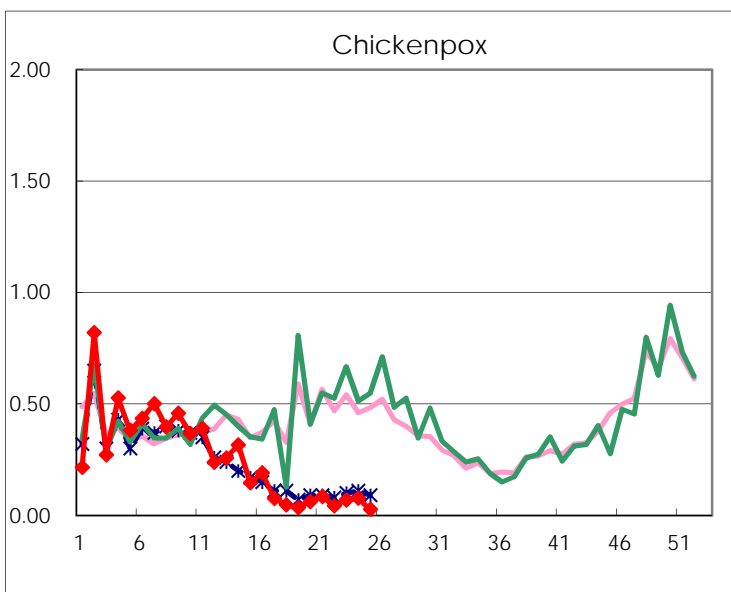
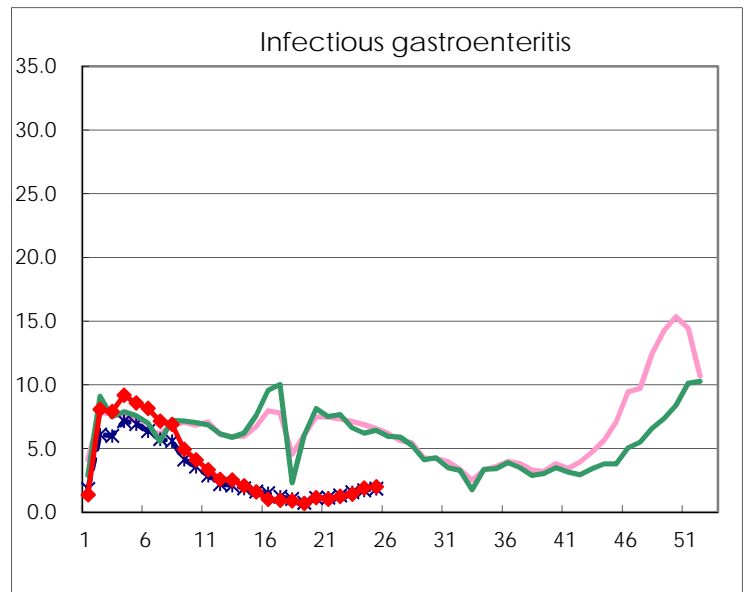
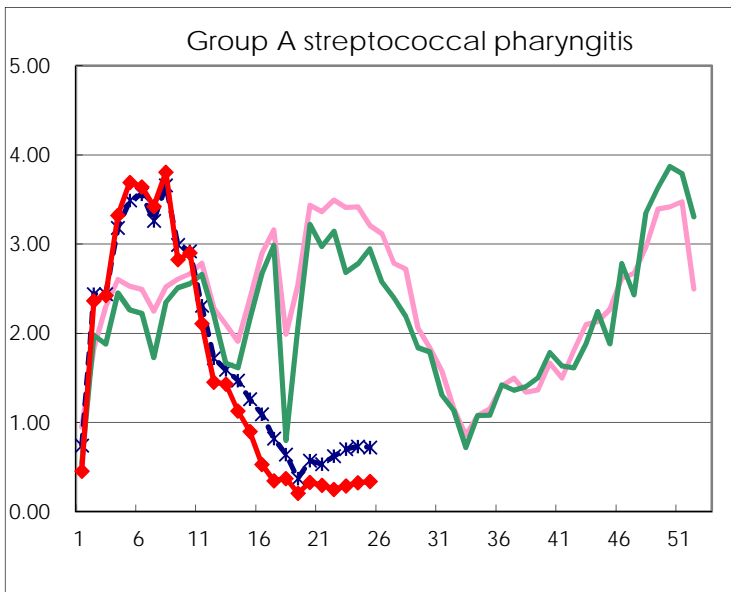
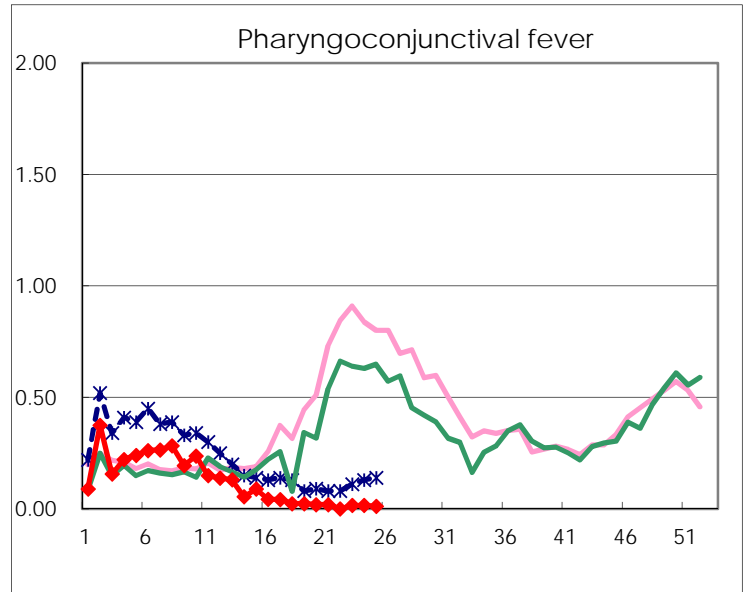
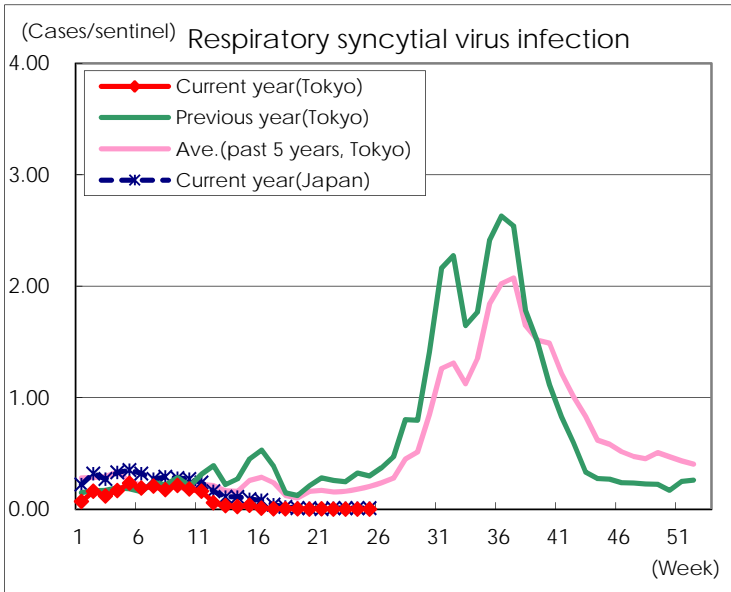
※ Designated infectious disease

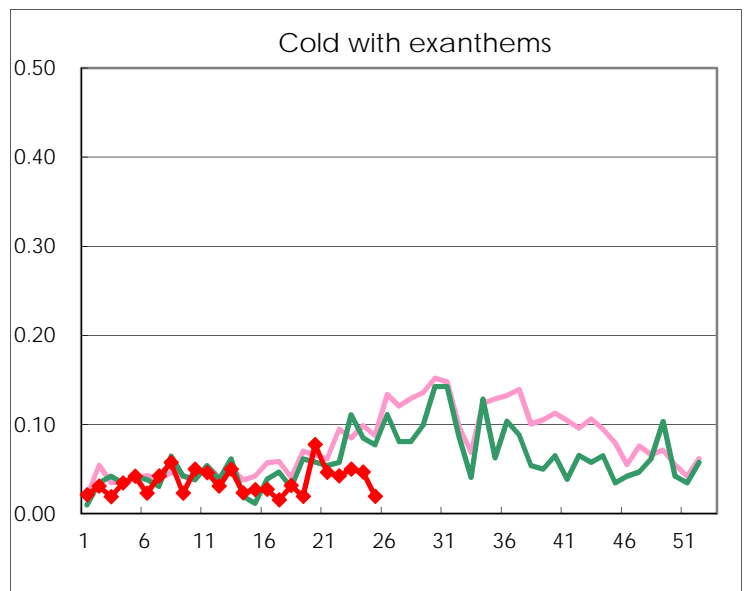
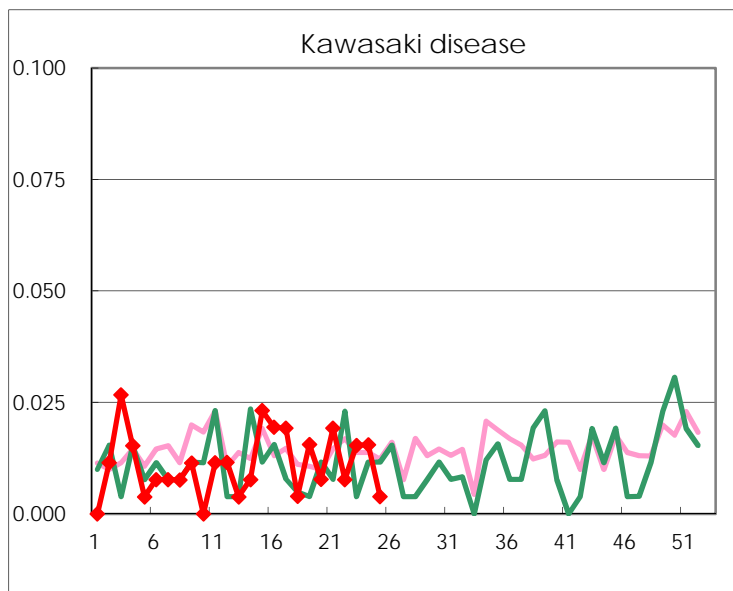
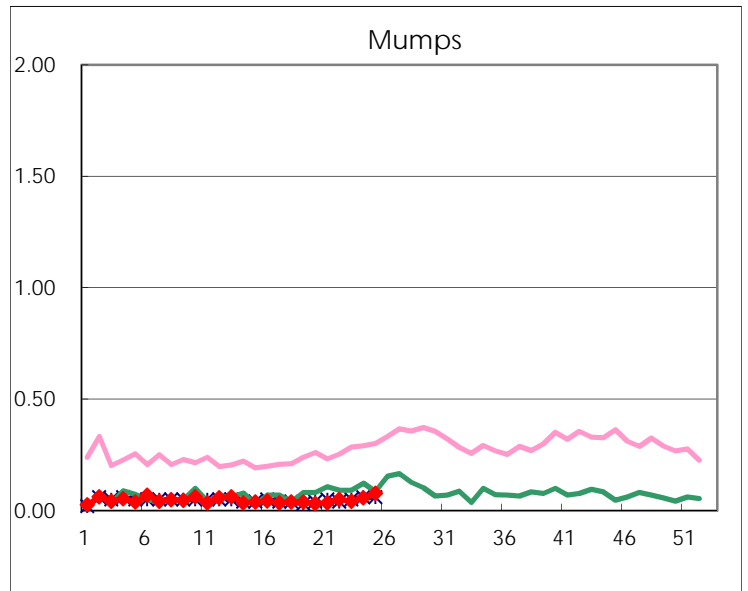
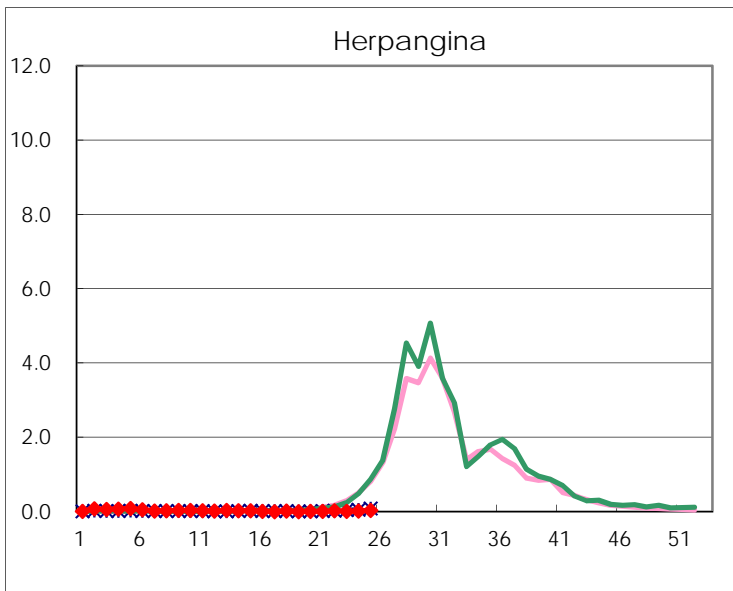
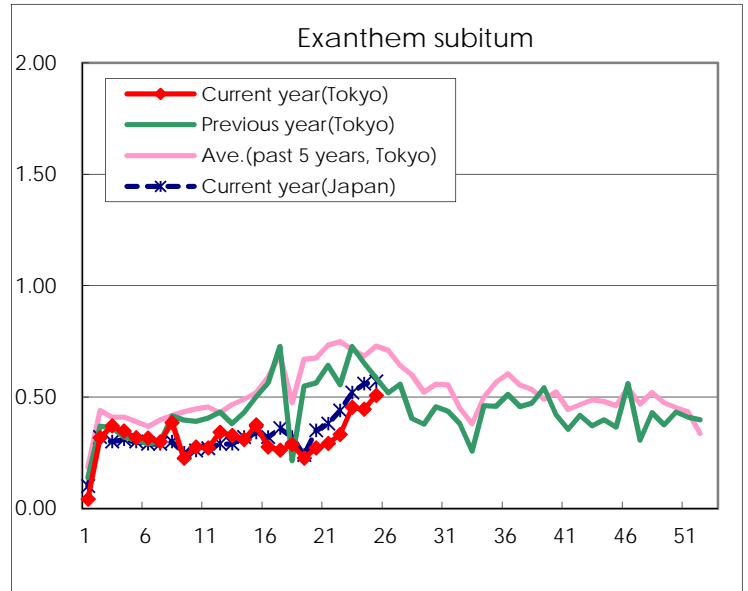
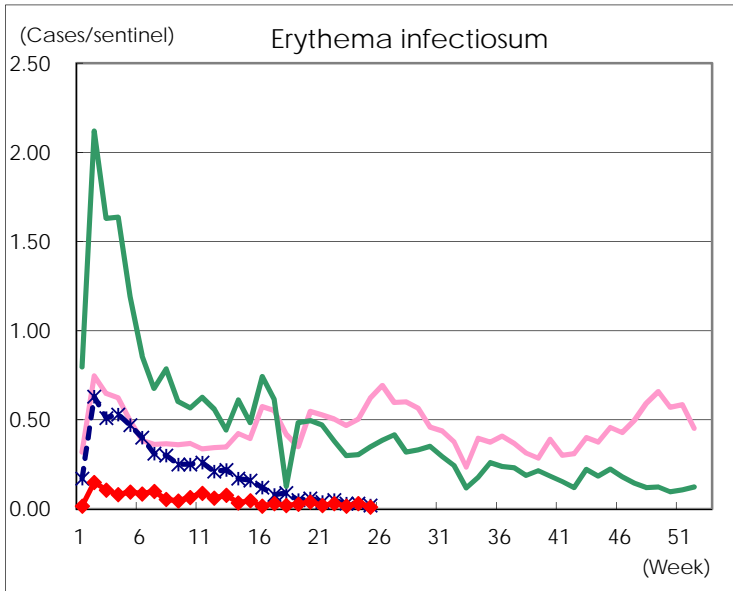
Number of patients with the diseases to be reported
by the designated clinics and hospitals

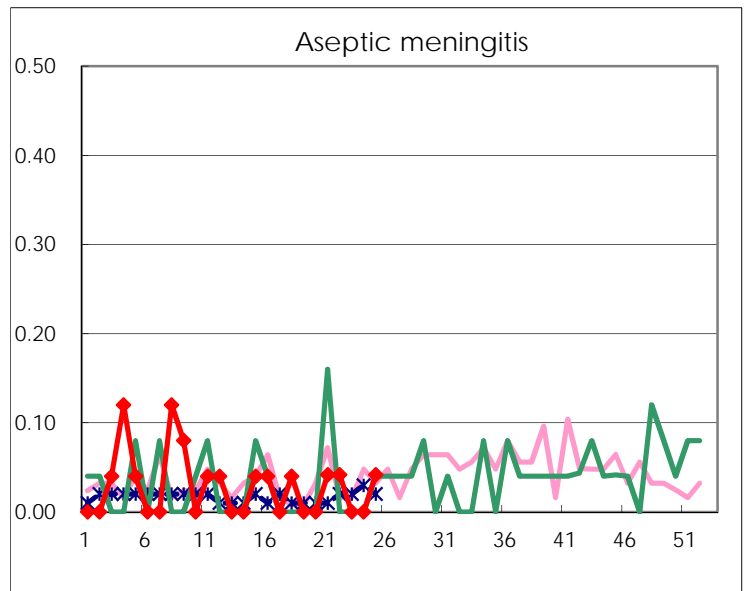
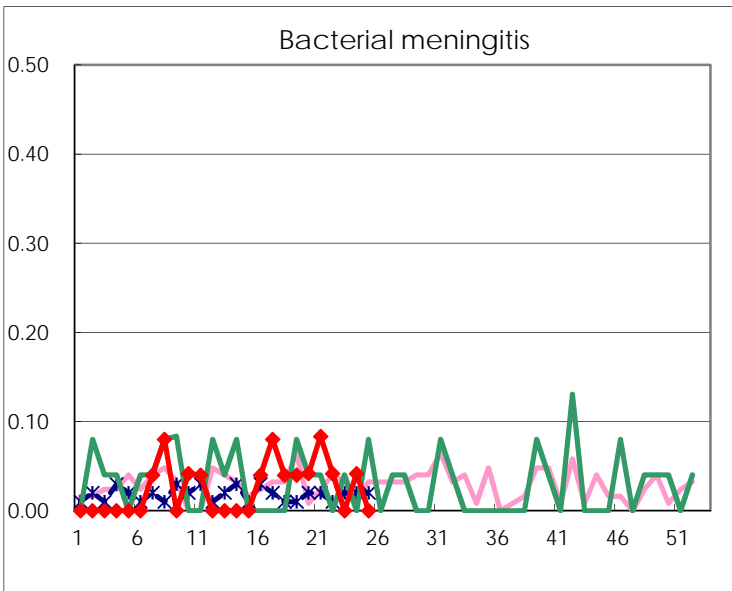
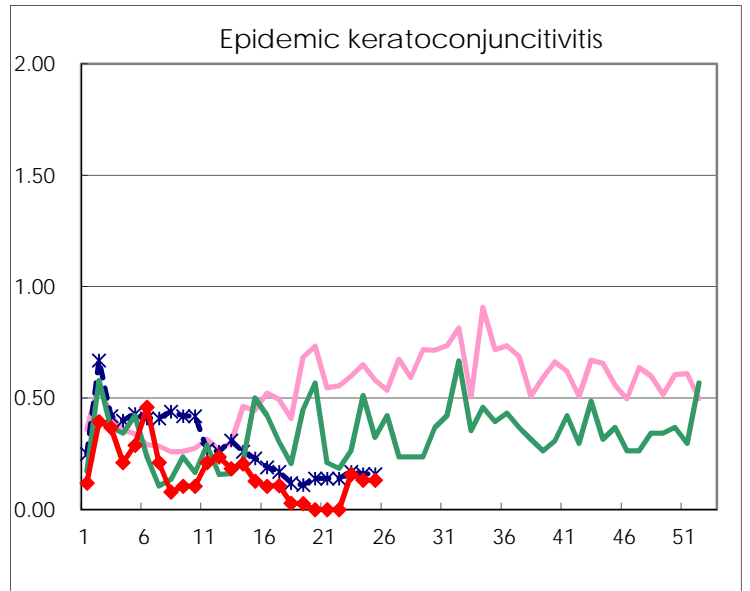
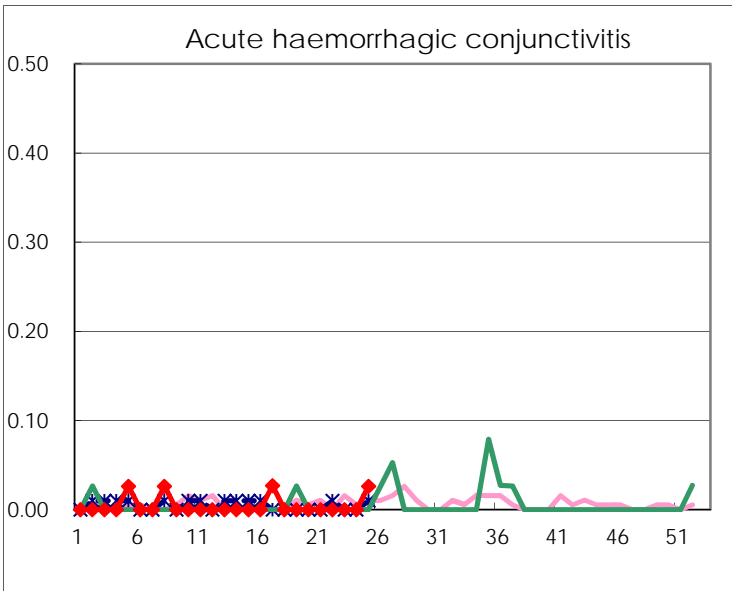
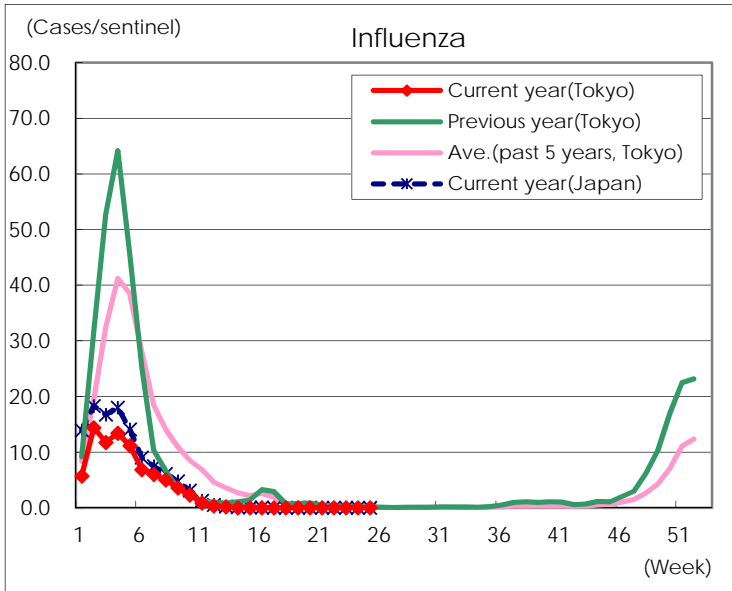
Diseases	Tokyo				
	22nd	23rd	24th	25th	/sentinel
Respiratory syncytial virus infection					
Pharyngoconjunctival fever		4	4	3	0.01
Group A streptococcal pharyngitis	64	75	83	87	0.34
Infectious gastroenteritis	319	367	489	515	2.00
Chickenpox	11	18	20	7	0.03
Hand, foot, and mouth disease	18	25	35	36	0.14
Erythema infectiosum	8	4	8	3	0.01
Exanthem subitum	86	118	115	131	0.51
Herpangina	6	3	4	10	0.04
Mumps	13	11	15	20	0.08
Kawasaki disease	2	4	4	1	
Cold with exanthsms	11	13	12	5	0.02
Influenza					
Acute hemorrhagic conjunctivitis				1	0.03
Epidemic keratoconjunctivitis		6	5	5	0.13
Bacterial meningitis	1		1		
Aseptic meningitis	1			1	0.04
Mycoplasma pneumonia	1	2	4	2	0.08
Chlamydial pneumonia (excluding psittacosis)			1	1	0.04
Infectious gastroenteritis (only by Rotavirus)					
Influenza-Associated Hospitalizations					

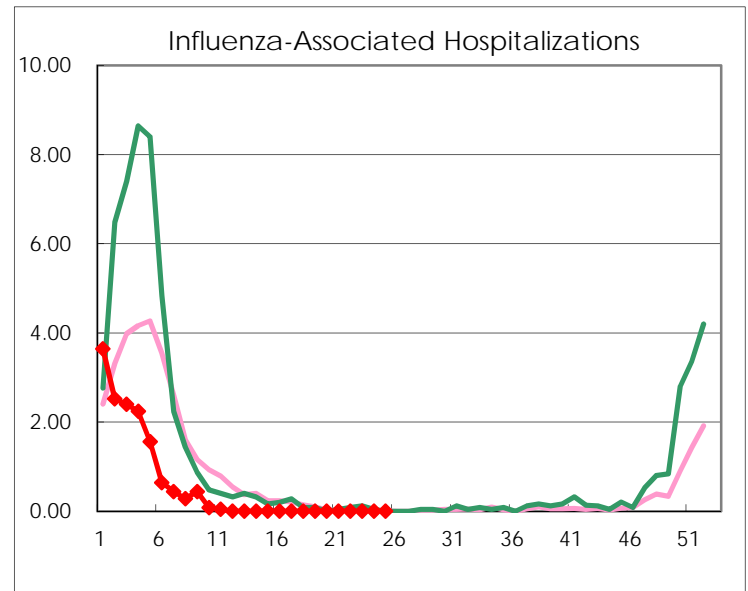
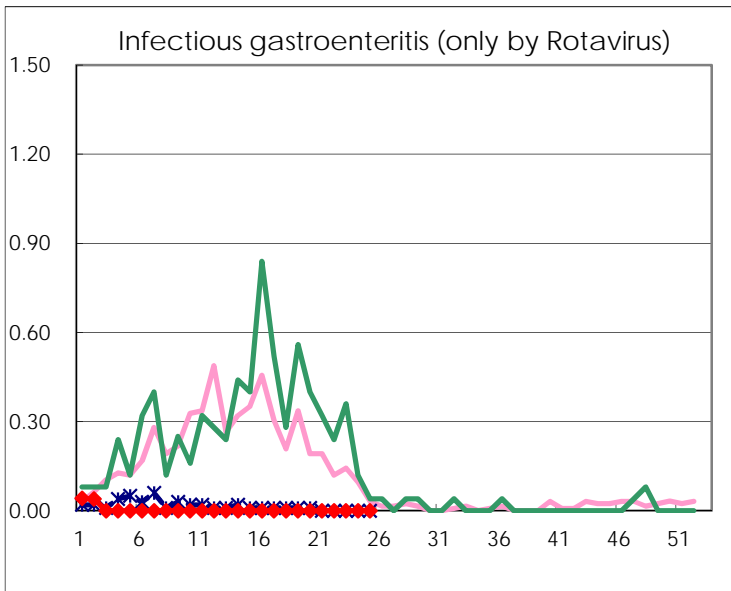
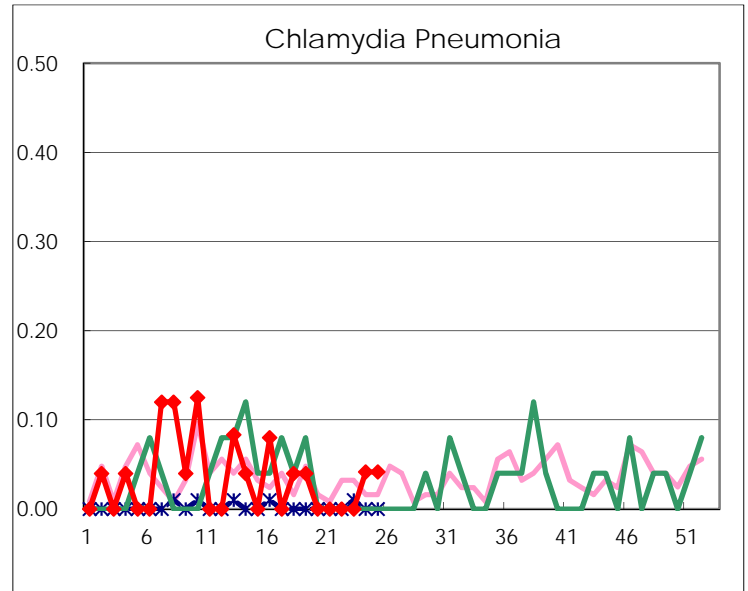
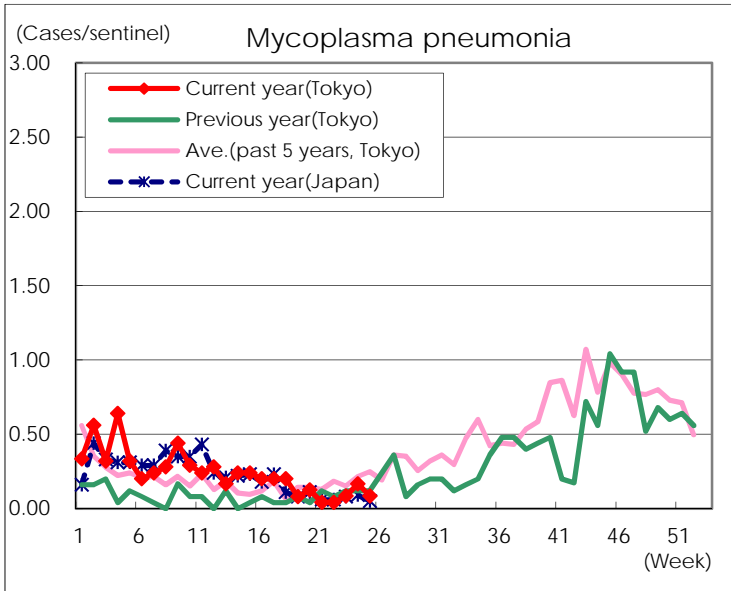
(Blank means 0.)

Disease Trend Graph (weekly reported cases per sentinel in comparison)









Number of sentinel facilities for weekly reporting		
Types of sentinels	Number of sentinels	Sentinels having reported
Pediatric	264	258
Influenza	419	412
Ophthalmic	39	38
Specially-designated	25	24