

2 July 2020 / Number 26
(6/22 ~ 6/28)

Surveillance System in Tokyo, Japan

The infectious diseases which all physicians must report

All physicians must report to health centers the incidence of the diseases which are shown at page one. Health centers electronically report the individual cases to Tokyo Metropolitan Infectious Disease Surveillance Center.

The infectious diseases required to be reported by the sentinels

The numbers of patients who visit the sentinel clinics or hospitals during a week are reported to health centers in Tokyo. And they electronically report the numbers to Tokyo Metropolitan Infectious Disease Surveillance Center. We have about 500 sentinel clinics and hospitals in Tokyo.

Tokyo Metropolitan Institute of Public Health

TEL:81-3-3363-3213 FAX:81-3-5332-7365

e-mail:www@tokyo-eiken.go.jp

URL:idsc.tokyo-eiken.go.jp/

Number of patients with the diseases which all physicians must report

Category	Diseases	Tokyo					Japan	
		23rd	24th	25th	26th	Cum 2020	26th	Cum 2020
I	Ebola hemorrhagic fever							
	Crimean-Congo hemorrhagic fever							
	Smallpox							
	South American hemorrhagic fever							
	Plague							
	Marburg disease							
	Lassa fever							
II	Acute poliomyelitis							
	Tuberculosis	59	38	52	45	1,201	267	8,401
	Diphtheria							
	Severe Acute Respiratory Syndrome(SARS)							
	Middle East Respiratory Syndrome (MERS)							
	Avian influenza H5N1							
	Avian influenza H7N9							
※	Novel Coronavirus 2019 infection	146	214	209	382	6,322		
III	Cholera							
	Shigellosis					9		53
	Enterohemorrhagic Escherichia coli infection		2	9	5	61	77	728
	Typhoid fever					1		17
	Paratyphoid fever					1		7
IV	Hepatitis E	2	3		5	70	8	248
	West Nile fever							
	Hepatitis A		2	1	1	19	3	76
	Echinococcosis						1	8
	Yellow fever							
	Psittacosis							4
	Omsk hemorrhagic fever							
	Relapsing fever							2
	Kyasanur forest disease							
	Q fever							
	Rabies							1
	Coccidioidomycosis					1		2
	Monkeypox							
	Zika virus infection							1
	Severe Fever with Thrombocytopenia Syndrome						2	34
	Hemorrhagic fever with renal syndrome							
	Western equine encephalitis							
	Tick-borne encephalitis							
	Anthrax							
	Chikungunya fever							3
	Scrub typhus(Tsutsugamushi disease)					5	1	100
	Dengue fever					12		41
	Eastern equine encephalitis							
	Avian influenza (excluding H5N1 and H7N9)							
	Nipah virus infection							
	Japanese spotted fever						10	100
	Japanese encephalitis							1
	Hantavirus pulmonary syndrome							
	Herpes B virus infection							
	Glanders							
	Brucellosis							1
	Venezuelan equine encephalitis							
	Hendra virus infection							
Epidemic typhus								
Botulism							1	
Malaria					5		12	
Tularemia								
Lyme disease							5	
Lyssavirus infection(excluding rabies)								
Rift valley fever								
Melioidosis								
Legionellosis	4	4	2	3	42	67	700	
Leptospirosis							1	
Rocky mountain spotted fever								

Category	Diseases	Tokyo					Japan	
		23rd	24th	25th	26th	Cum 2020	26th	Cum 2020
V	Amebiasis	1	1	5	4	60	12	298
	Viral hepatitis(excluding hepatitis A and E)		2		1	32	4	130
	CRE infection	2	1	3	7	58	33	785
	Acute Flaccid Paralysis (excluding Acute poliomyelitis)					1		15
	Acute encephalitis(excluding JE and WNE)	1	1			21	1	310
	Cryptosporidiosis							2
	Creutzfeldt-Jakob disease			1	1	8	3	67
	Severe invasive streptococcal infections(TSLS)	3	3	1	3	51	10	409
	Acquired immunodeficiency syndrome (AIDS)	5	6	9	7	176	10	498
	Giardiasis					3		13
	Invasive <i>Haemophilus influenzae</i> disease				1	18	4	172
	Invasive meningococcal disease					1		11
	Invasive pneumococcal disease	1	4			104	9	999
	Varicella (limited to hospitalized case)				1	26	4	181
	Congenital rubella syndrome							1
	Syphilis	40	27	46	28	740	72	2,786
	Disseminated cryptococcosis		1		2	9	4	64
	Tetanus			1		4		50
	Vancomycin-resistant <i>S. aureus</i> infection							
	Vancomycin-resistant Enterococcus infection		1			6	2	69
Pertussis		3	4	2	223	15	2,547	
Rubella				1	21	3	83	
Measles					2		12	
MDRA infection							3	

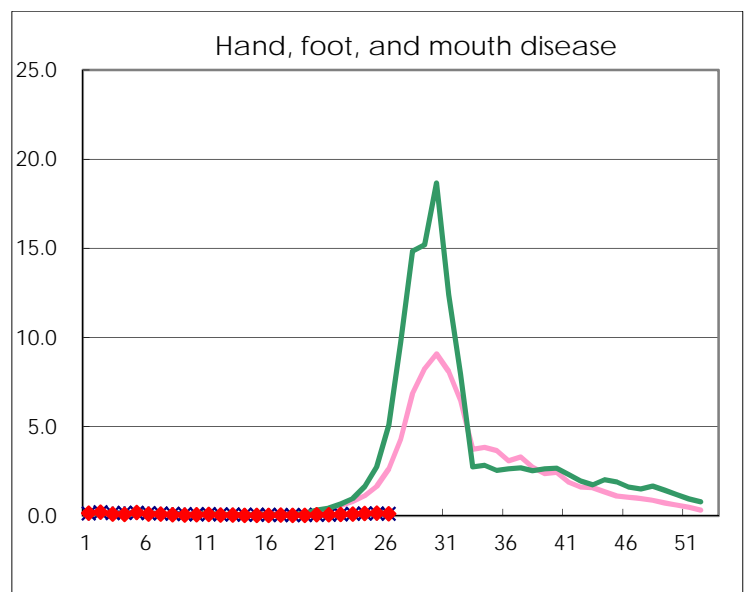
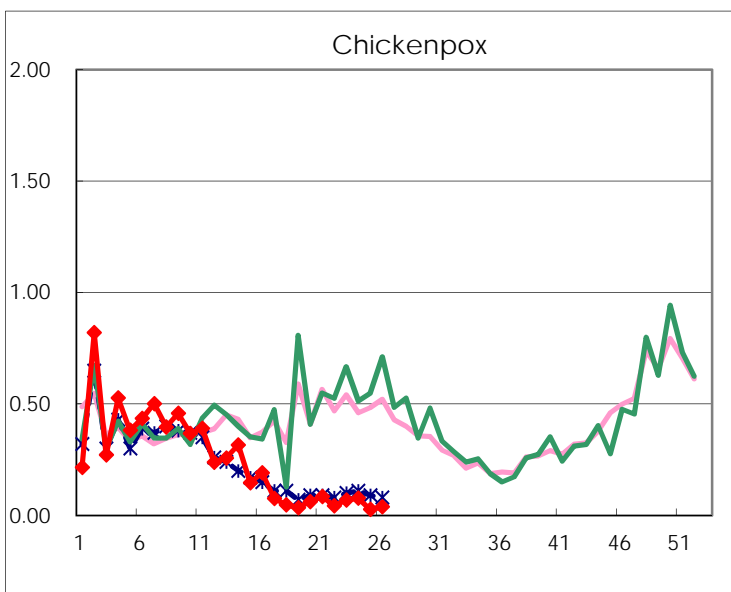
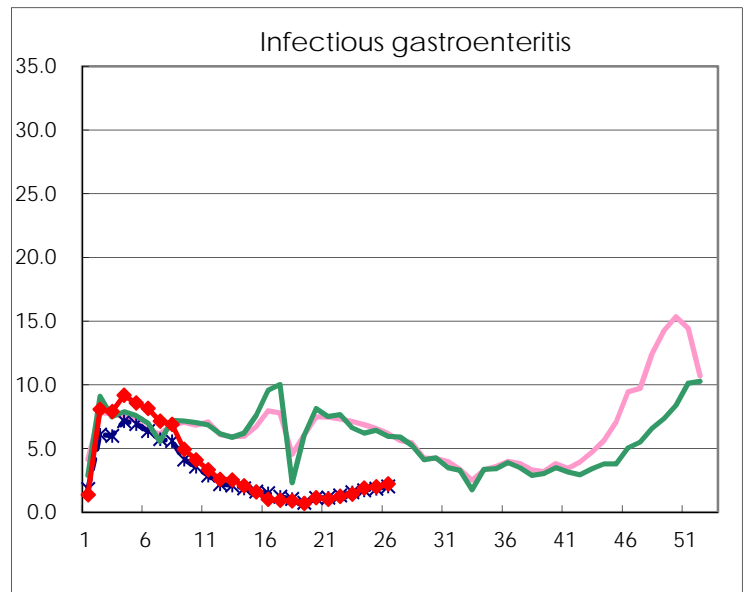
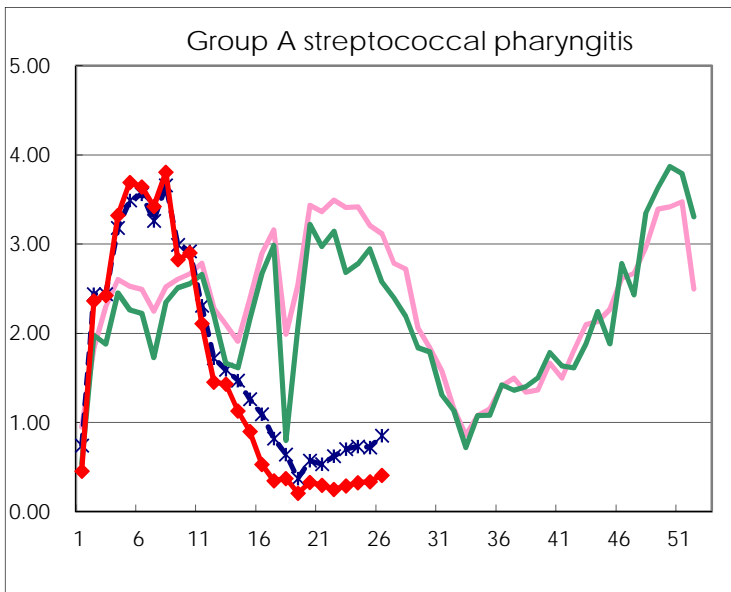
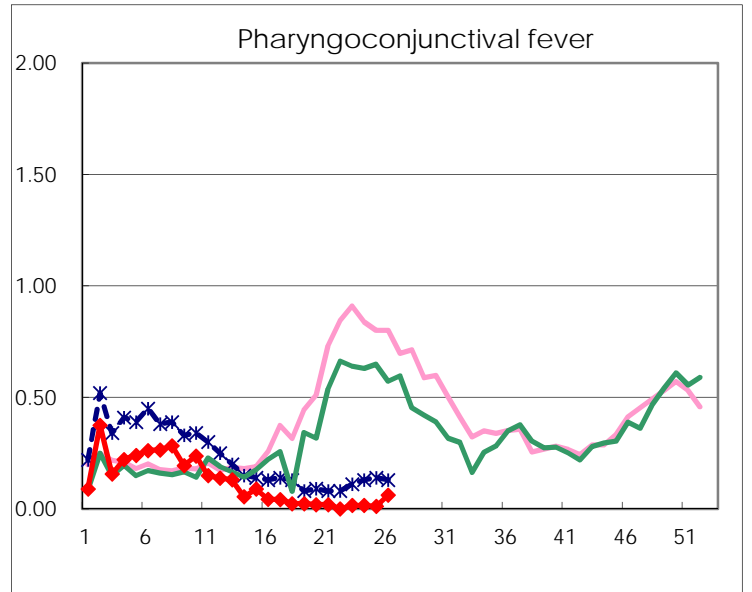
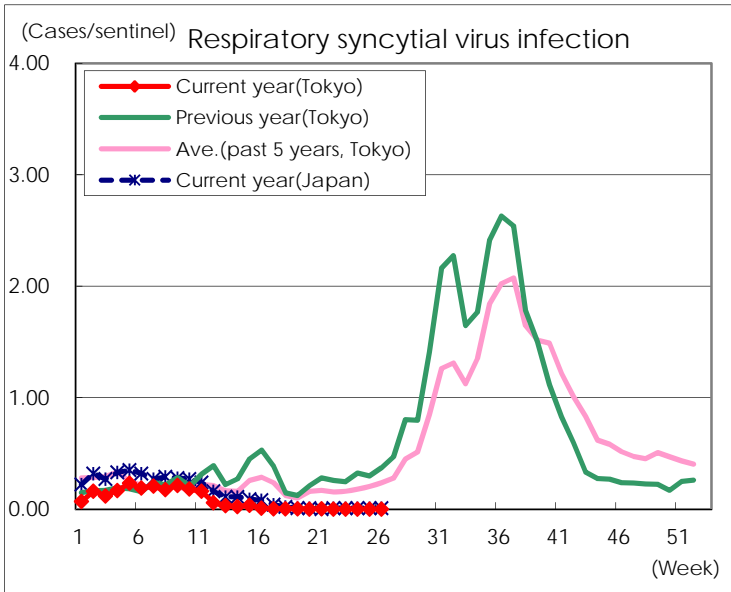
※ Designated infectious disease

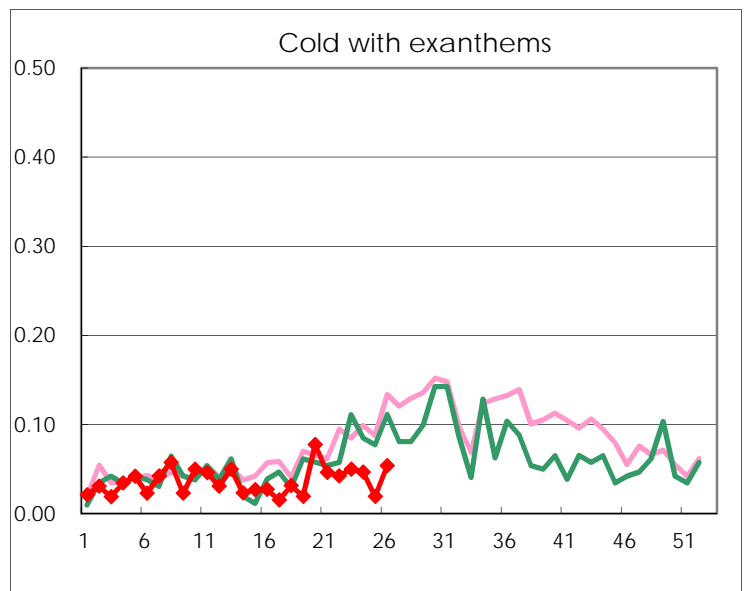
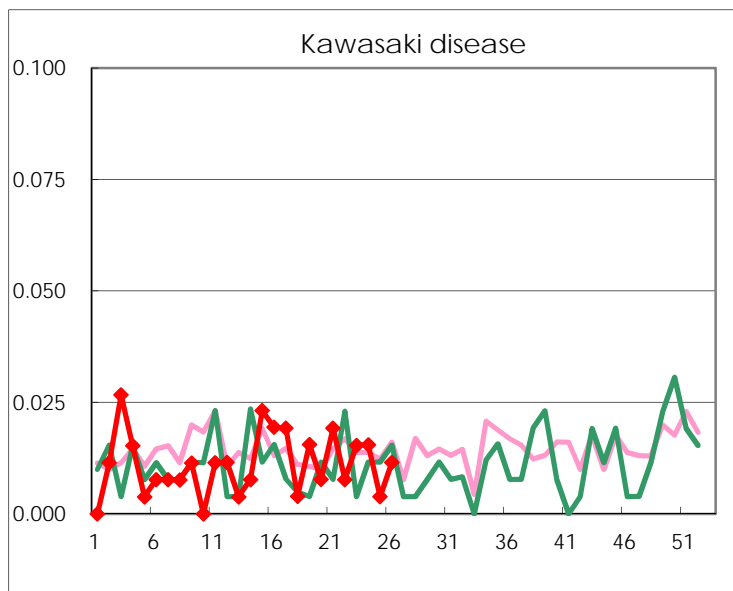
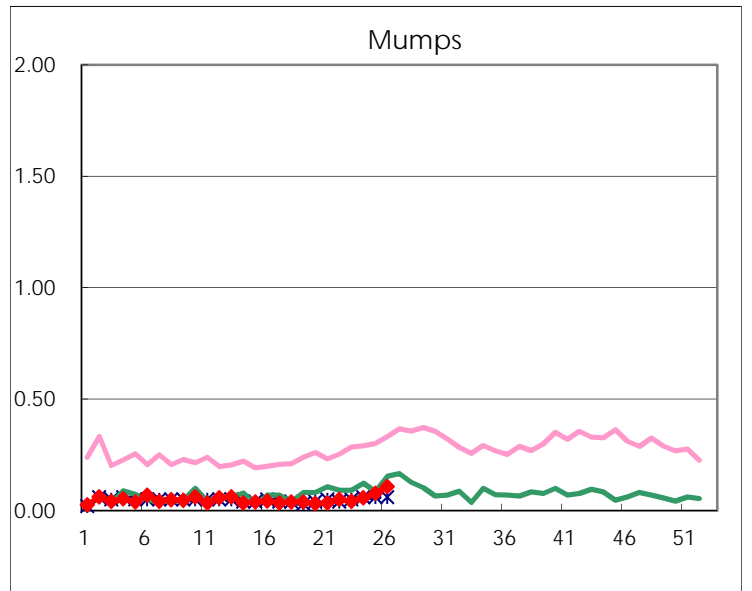
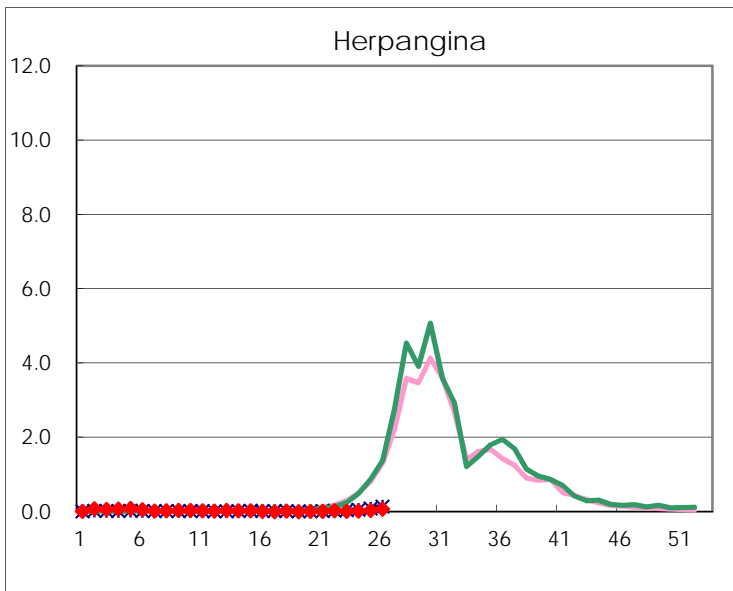
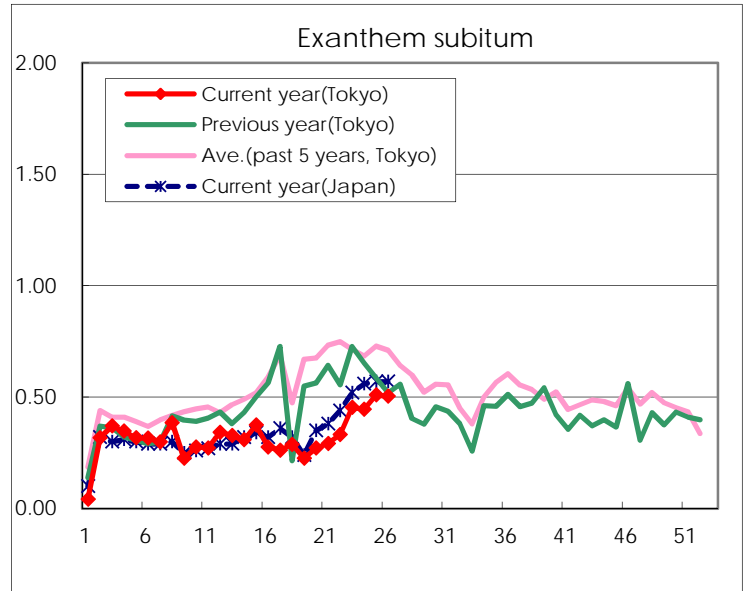
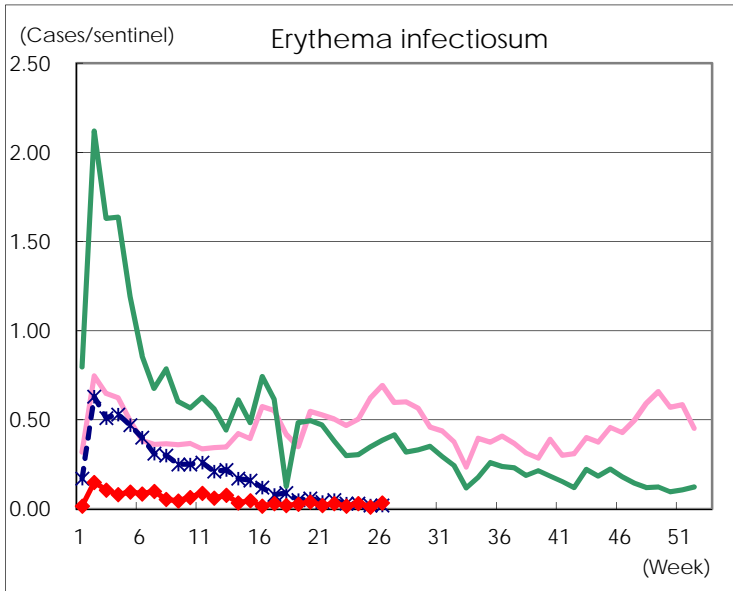
Number of patients with the diseases to be reported
by the designated clinics and hospitals

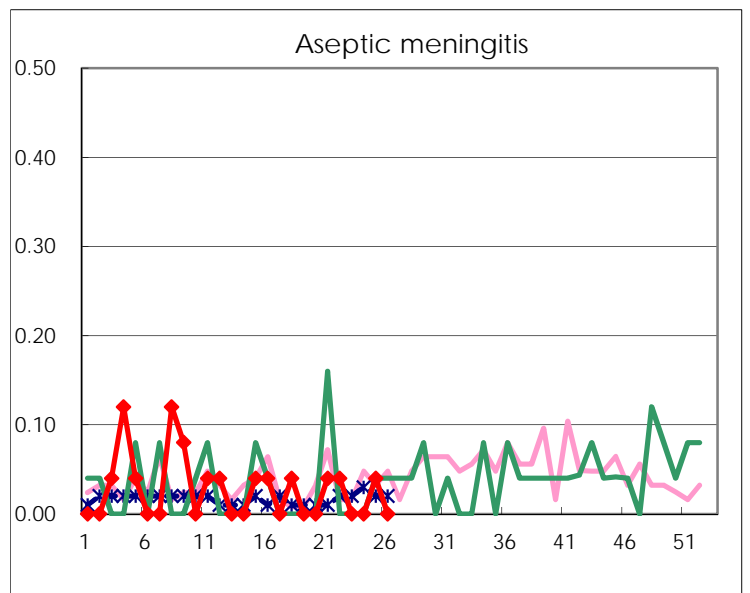
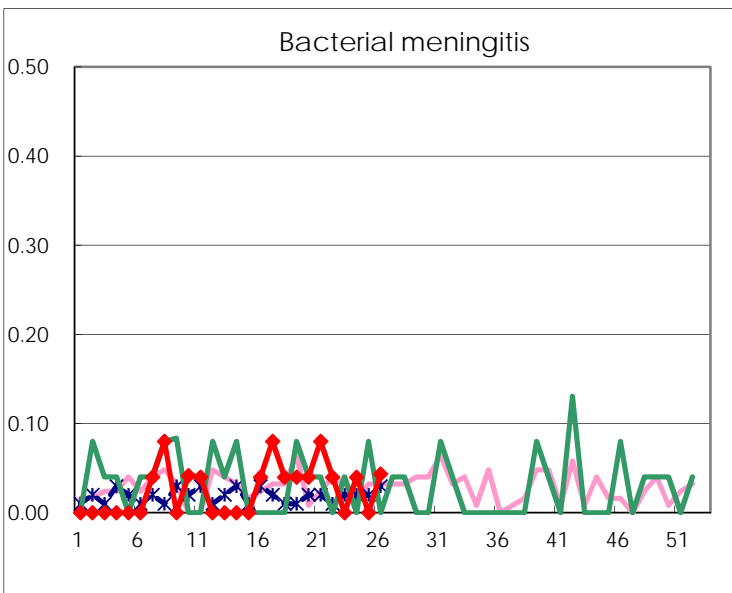
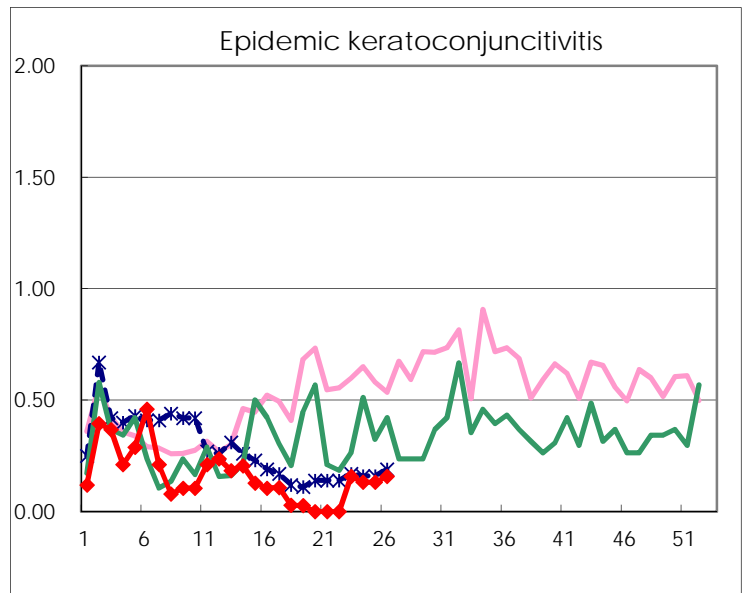
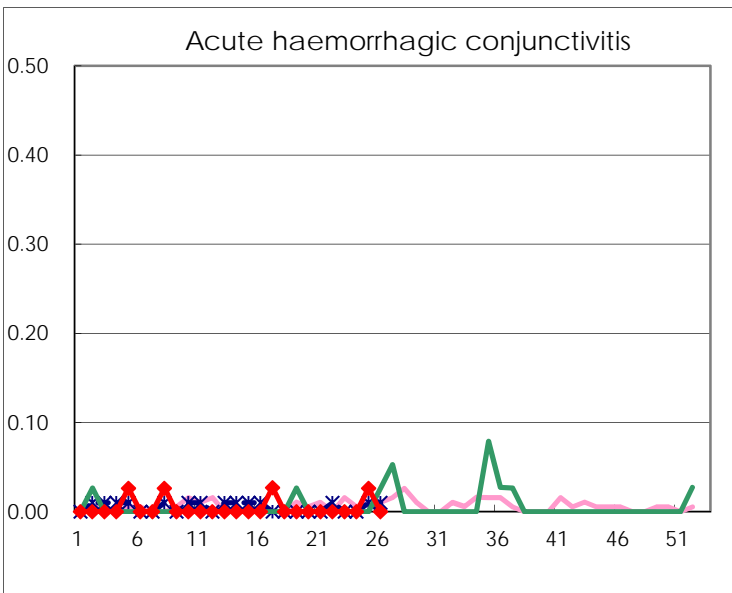
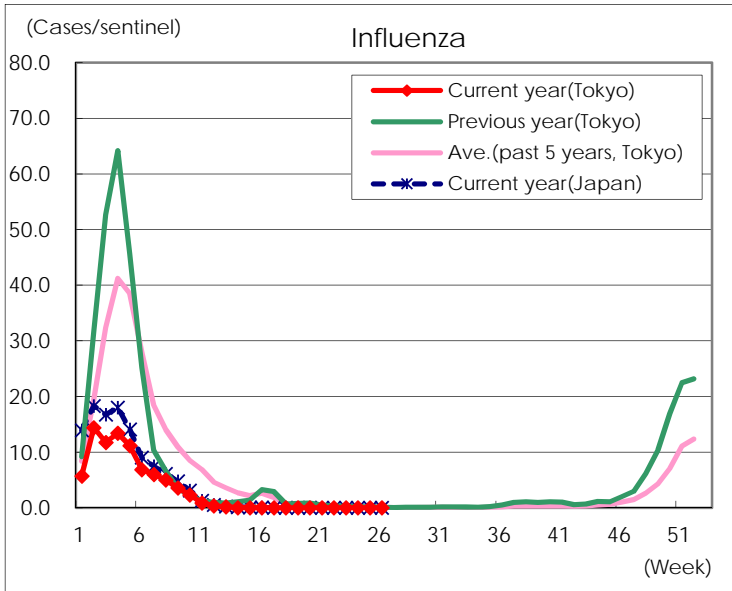
Diseases	Tokyo				
	23rd	24th	25th	26th	/sentinel
Respiratory syncytial virus infection					
Pharyngoconjunctival fever	4	4	3	16	0.06
Group A streptococcal pharyngitis	75	83	87	106	0.41
Infectious gastroenteritis	367	489	516	574	2.21
Chickenpox	18	20	7	10	0.04
Hand, foot, and mouth disease	25	35	36	27	0.10
Erythema infectiosum	4	8	3	9	0.03
Exanthem subitum	118	115	132	131	0.50
Herpangina	3	4	10	19	0.07
Mumps	11	15	20	28	0.11
Kawasaki disease	4	4	1	3	0.01
Cold with exanths	13	12	5	14	0.05
Influenza					
Acute hemorrhagic conjunctivitis			1		
Epidemic keratoconjunctivitis	6	5	5	6	0.16
Bacterial meningitis		1		1	0.04
Aseptic meningitis			1		
Mycoplasma pneumonia	2	4	2	1	0.04
Chlamydial pneumonia (excluding psittacosis)		1	1		
Infectious gastroenteritis (only by Rotavirus)				1	0.04
Influenza-Associated Hospitalizations					

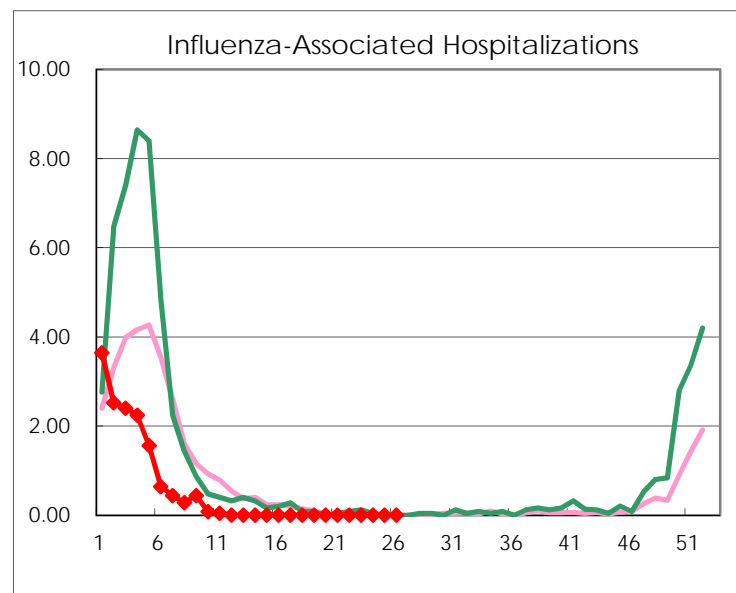
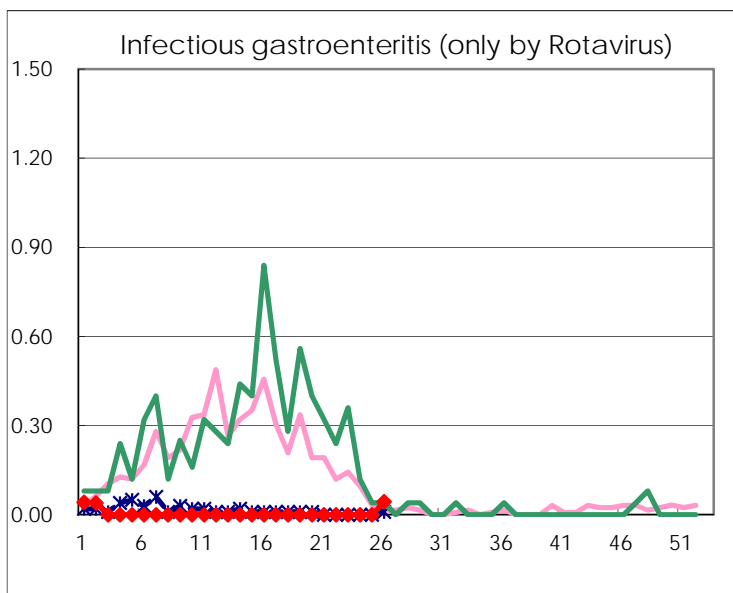
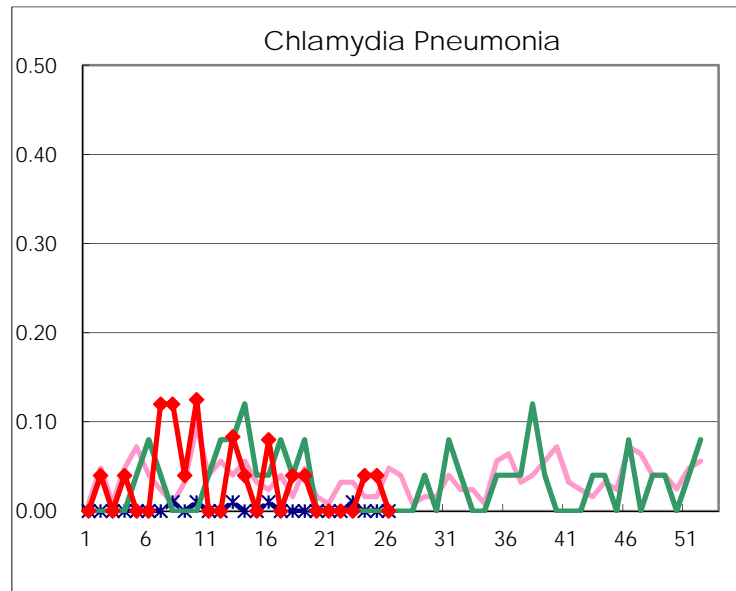
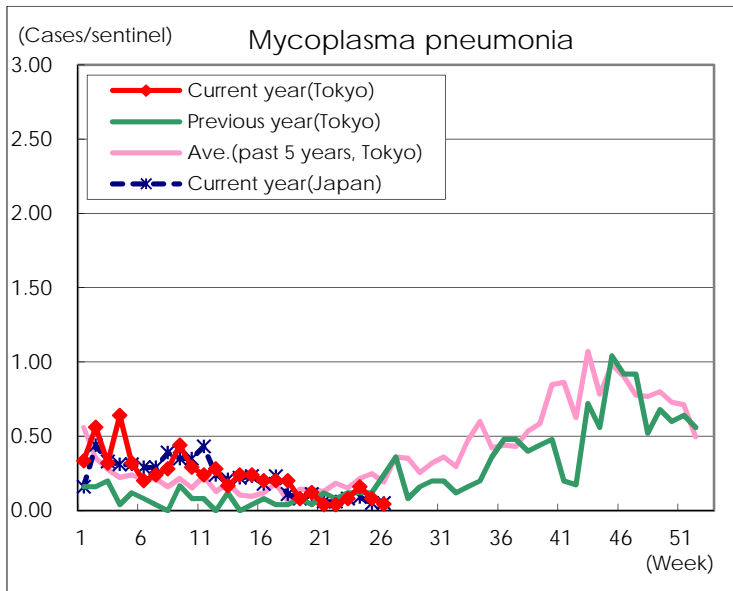
(Blank means 0.)

Disease Trend Graph (weekly reported cases per sentinel in comparison)









Number of sentinel facilities for weekly reporting		
Types of sentinels	Number of sentinels	Sentinels having reported
Pediatric	264	260
Influenza	419	413
Ophthalmic	39	38
Specially-designated	25	23