

**9 July 2020 / Number 27**  
**( 6/29 ~ 7/5 )**

## Surveillance System in Tokyo, Japan

The infectious diseases which all physicians must report

All physicians must report to health centers the incidence of the diseases which are shown at page one. Health centers electronically report the individual cases to Tokyo Metropolitan Infectious Disease Surveillance Center.

The infectious diseases required to be reported by the sentinels

The numbers of patients who visit the sentinel clinics or hospitals during a week are reported to health centers in Tokyo. And they electronically report the numbers to Tokyo Metropolitan Infectious Disease Surveillance Center. We have about 500 sentinel clinics and hospitals in Tokyo.

Tokyo Metropolitan Institute of Public Health

TEL:81-3-3363-3213 FAX:81-3-5332-7365

e-mail:[www@tokyo-eiken.go.jp](mailto:www@tokyo-eiken.go.jp)

URL:[idsc.tokyo-eiken.go.jp/](http://idsc.tokyo-eiken.go.jp/)

---

Number of patients with the diseases which all physicians must report

Category	Diseases	Tokyo					Japan	
		24th	25th	26th	27th	Cum 2020	27th	Cum 2020
I	Ebola hemorrhagic fever							
	Crimean-Congo hemorrhagic fever							
	Smallpox							
	South American hemorrhagic fever							
	Plague							
	Marburg disease							
	Lassa fever							
II	Acute poliomyelitis							
	Tuberculosis	38	52	45	47	1,248	293	8,760
	Diphtheria							
	Severe Acute Respiratory Syndrome(SARS)							
	Middle East Respiratory Syndrome (MERS)							
	Avian influenza H5N1							
	Avian influenza H7N9							
※	Novel Coronavirus 2019 infection	214	209	381	712	7,033		
III	Cholera							
	Shigellosis					9		53
	Enterohemorrhagic Escherichia coli infection	2	9	5	11	72	93	831
	Typhoid fever					1		17
	Paratyphoid fever					1		7
IV	Hepatitis E	3		5	1	71	5	254
	West Nile fever							
	Hepatitis A	2	1	1		19	1	77
	Echinococcosis							8
	Yellow fever							
	Psittacosis							4
	Omsk hemorrhagic fever							
	Relapsing fever						1	3
	Kyasanur forest disease							
	Q fever							
	Rabies							1
	Coccidioidomycosis					1		3
	Monkeypox							
	Zika virus infection							1
	Severe Fever with Thrombocytopenia Syndrome						4	38
	Hemorrhagic fever with renal syndrome							
	Western equine encephalitis							
	Tick-borne encephalitis							
	Anthrax							
	Chikungunya fever							3
	Scrub typhus(Tsutsugamushi disease)					5	1	101
	Dengue fever					12		41
	Eastern equine encephalitis							
	Avian influenza (excluding H5N1 and H7N9)							
	Nipah virus infection							
	Japanese spotted fever						4	105
	Japanese encephalitis							1
	Hantavirus pulmonary syndrome							
	Herpes B virus infection							
	Glanders							
	Brucellosis							1
	Venezuelan equine encephalitis							
	Hendra virus infection							
Epidemic typhus								
Botulism							1	
Malaria						5	12	
Tularemia								
Lyme disease							2	
Lyssavirus infection(excluding rabies)								
Rift valley fever								
Melioidosis								
Legionellosis	4	2	3	5	47	54	758	
Leptospirosis							1	
Rocky mountain spotted fever								

Category	Diseases	Tokyo					Japan	
		24th	25th	26th	27th	Cum 2020	27th	Cum 2020
V	Amebiasis	1	5	4	3	63	4	307
	Viral hepatitis(excluding hepatitis A and E)	2		1		32	1	131
	CRE infection	1	3	7	2	61	25	822
	Acute Flaccid Paralysis (excluding Acute poliomyelitis)					1		15
	Acute encephalitis(excluding JE and WNE)	1				21	7	319
	Cryptosporidiosis							2
	Creutzfeldt-Jakob disease		1	1		8	3	72
	Severe invasive streptococcal infections(TSLS)	3	1	3	1	52	9	421
	Acquired immunodeficiency syndrome (AIDS)	6	9	7	2	178	11	512
	Giardiasis					3		14
	Invasive <i>Haemophilus influenzae</i> disease			1	1	19	2	174
	Invasive meningococcal disease					1		11
	Invasive pneumococcal disease	4				104	12	1,014
	Varicella (limited to hospitalized case)			1		26	8	192
	Congenital rubella syndrome							1
	Syphilis	27	46	32	31	775	76	2,923
	Disseminated cryptococcosis	1		2		9	2	67
	Tetanus		1			4		52
	Vancomycin-resistant <i>S. aureus</i> infection							
	Vancomycin-resistant Enterococcus infection	1				6		69
Pertussis	3	4	2	4	227	9	2,564	
Rubella			1		21		83	
Measles					2		12	
MDRA infection							3	

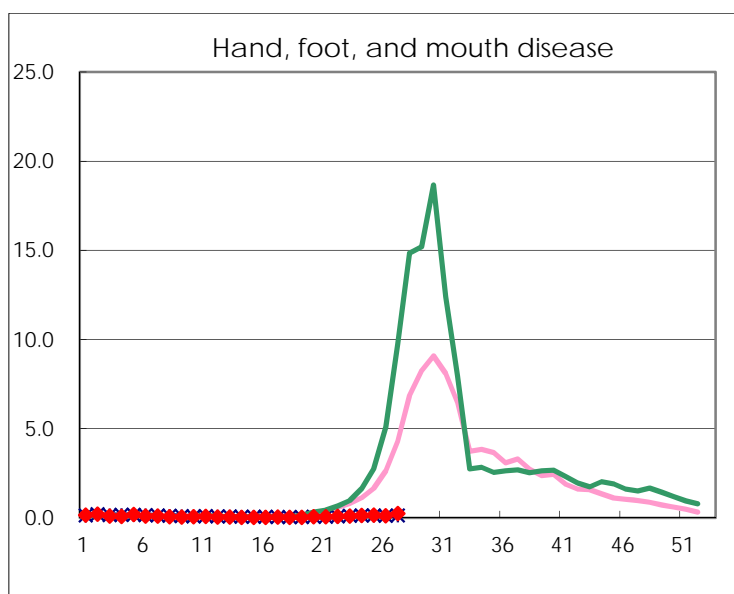
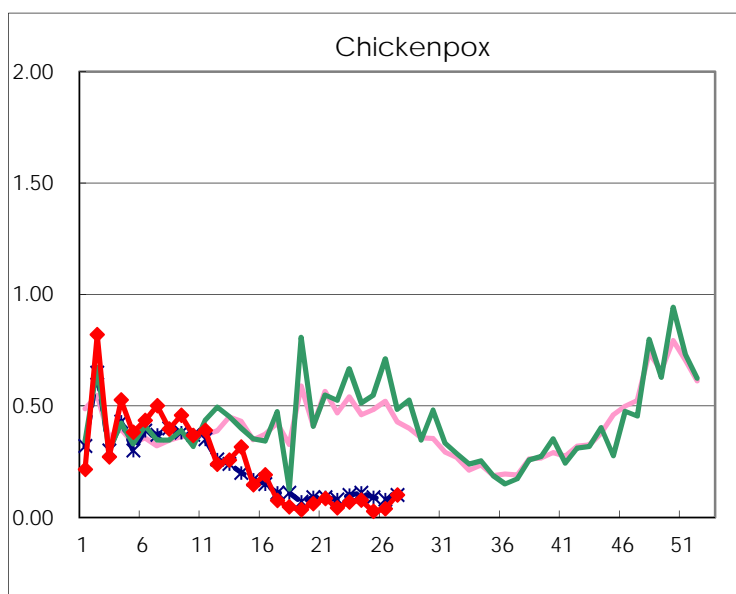
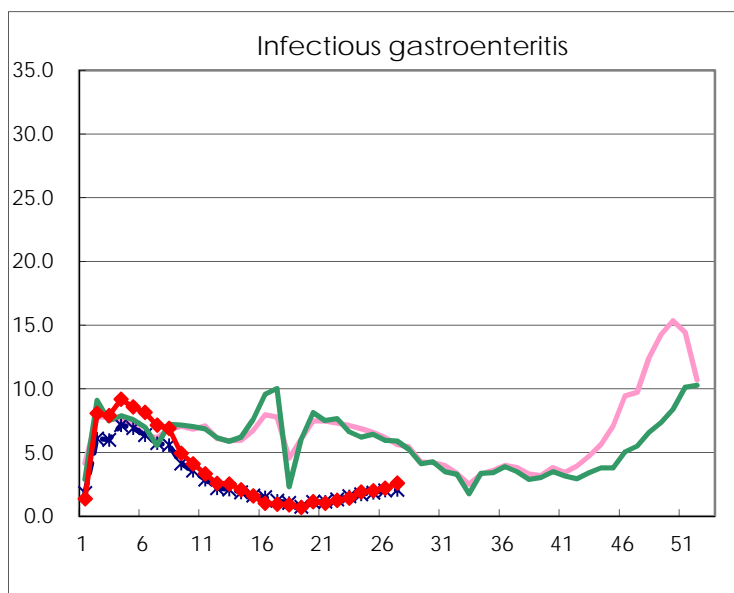
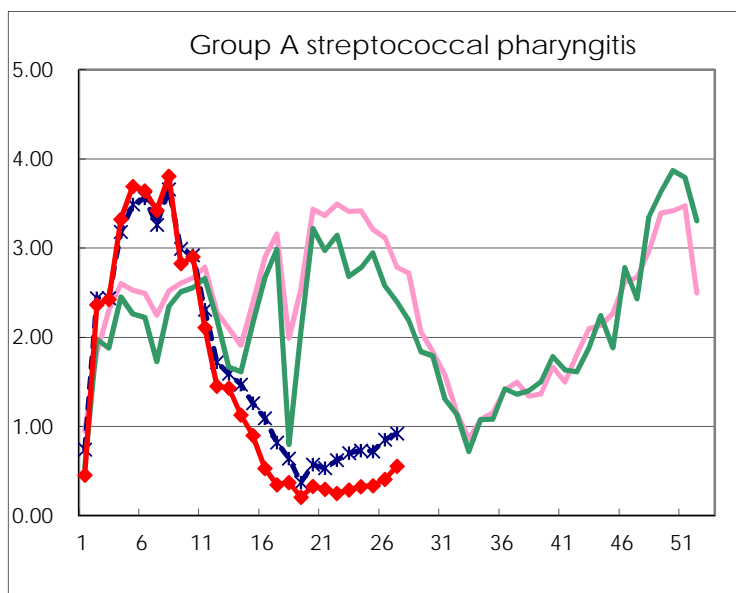
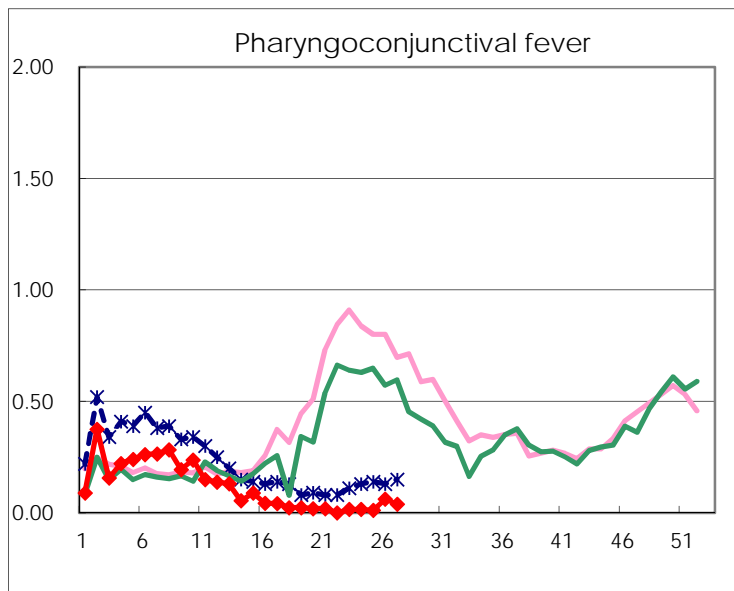
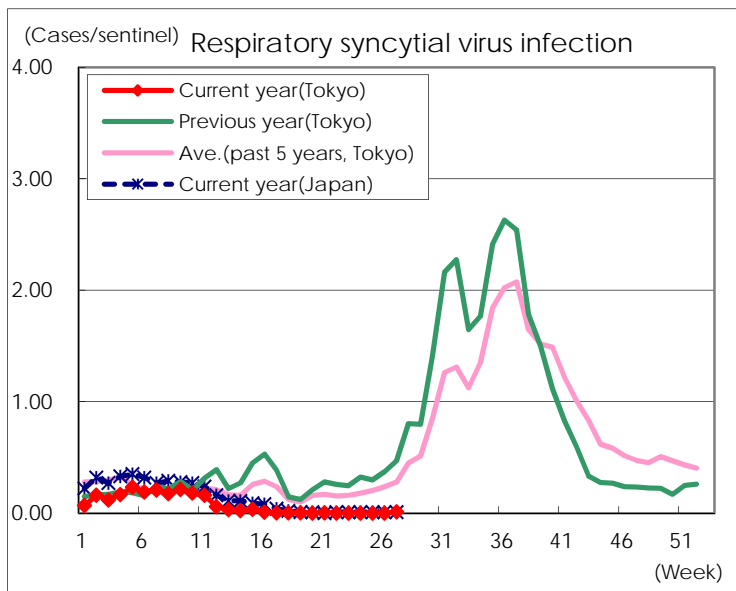
※ Designated infectious disease

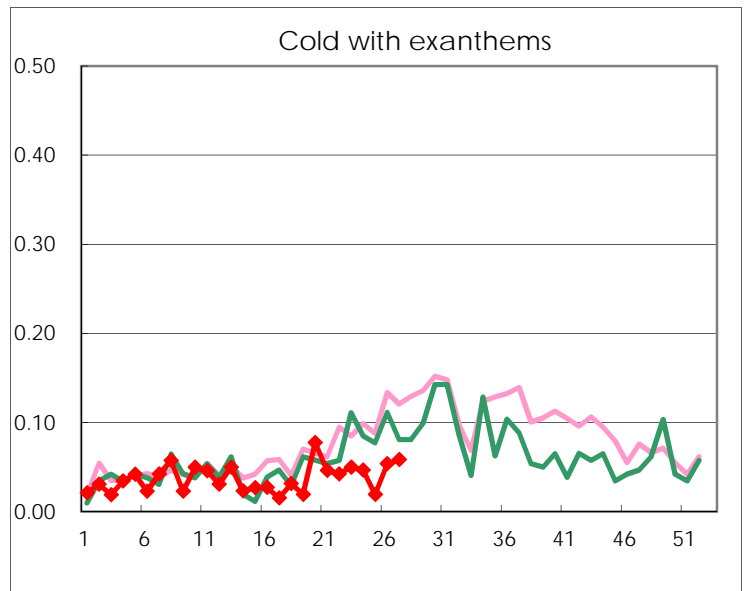
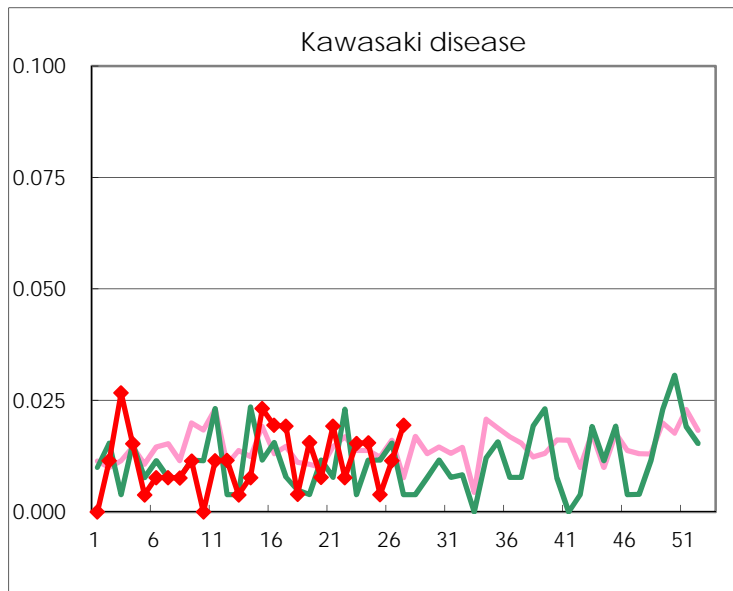
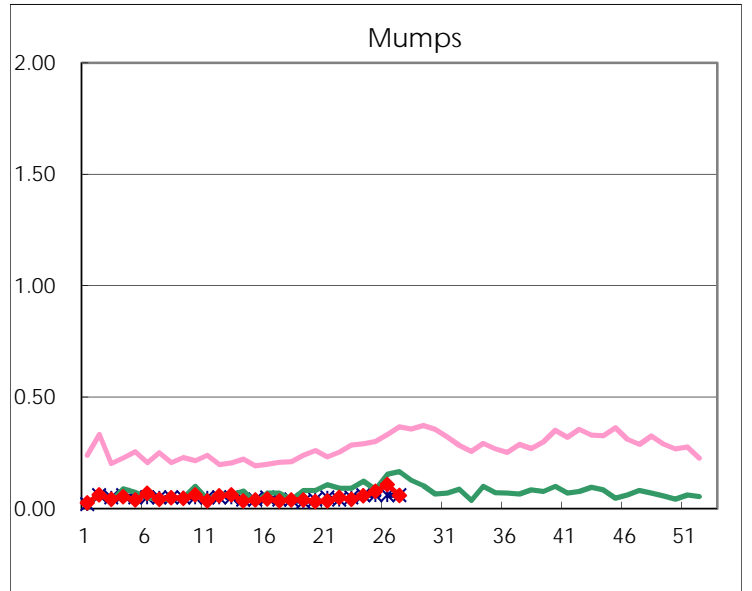
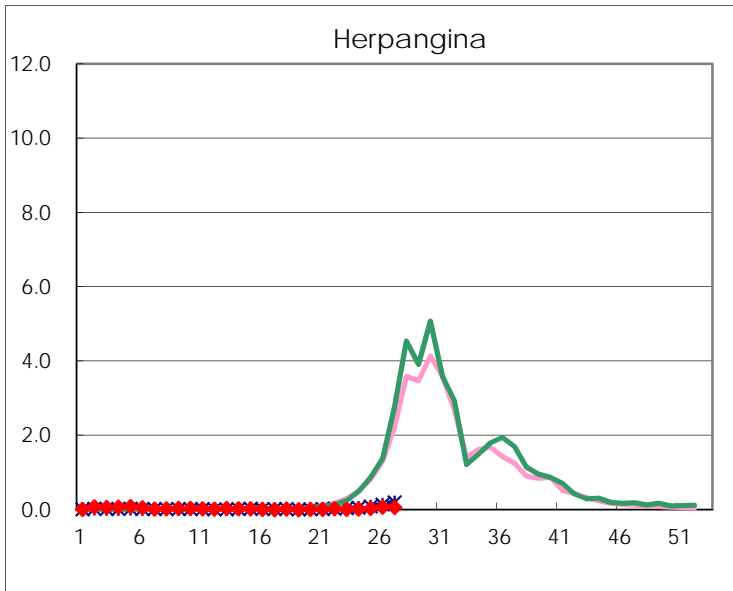
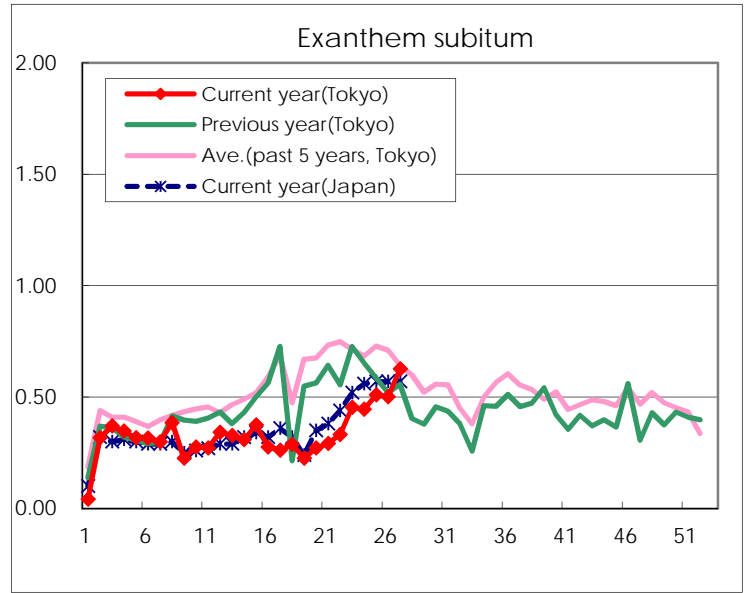
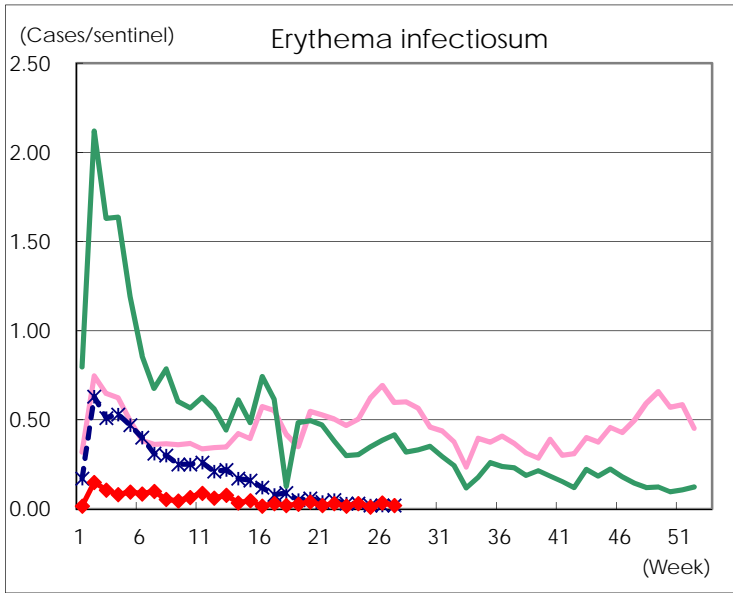
Number of patients with the diseases to be reported  
by the designated clinics and hospitals

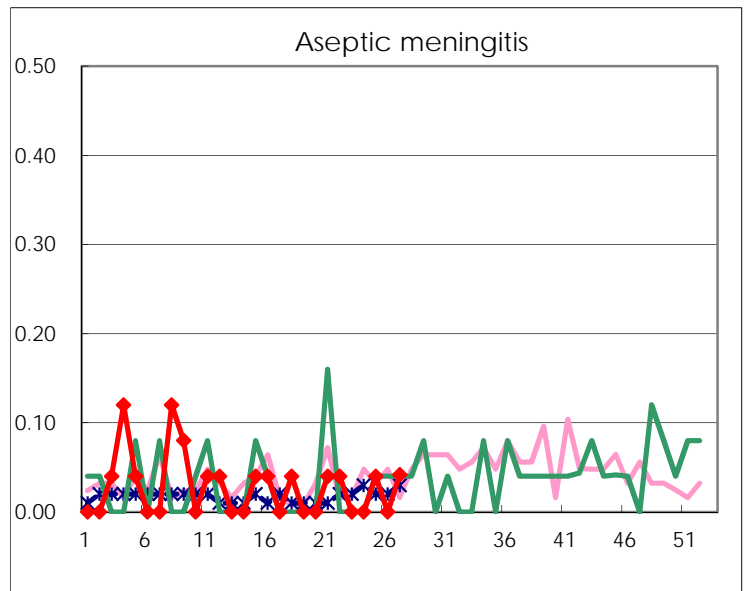
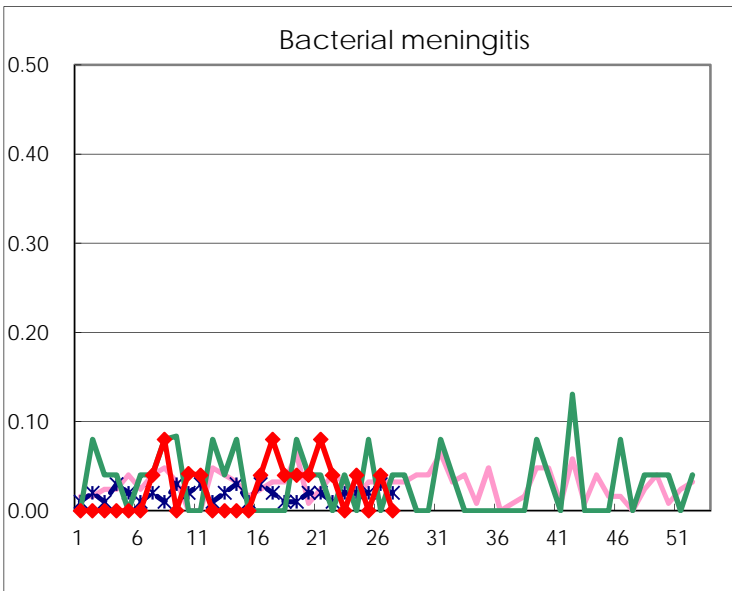
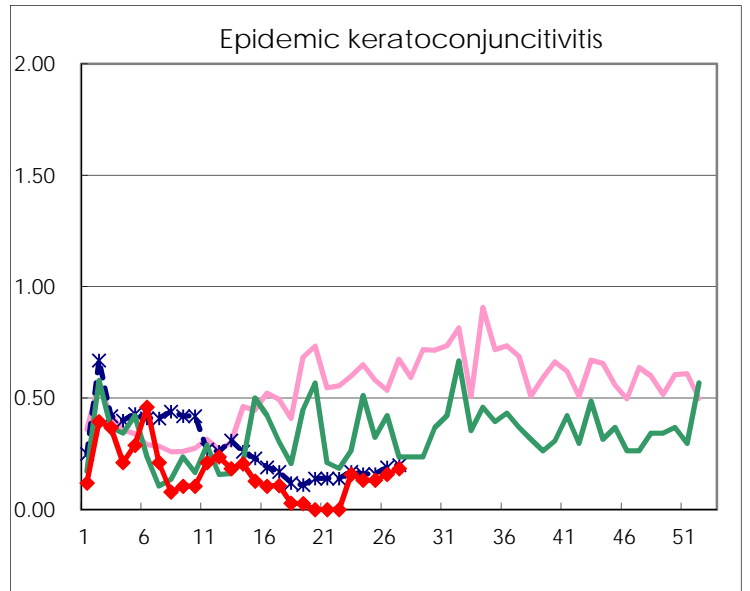
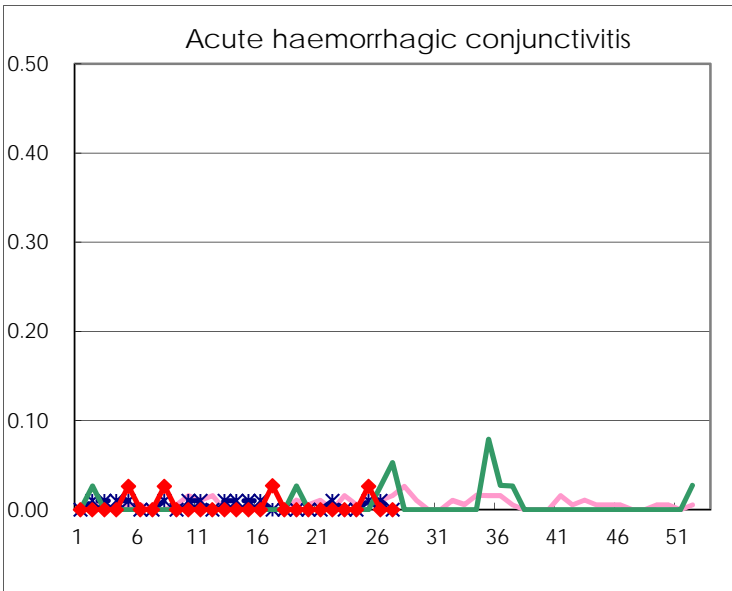
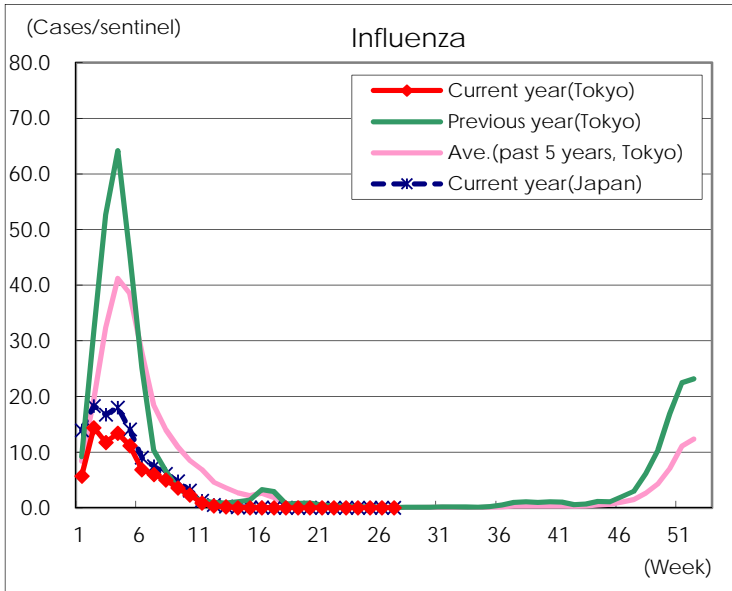
Diseases	Tokyo				
	24th	25th	26th	27th	/sentinel
Respiratory syncytial virus infection				3	0.01
Pharyngoconjunctival fever	4	3	16	10	0.04
Group A streptococcal pharyngitis	83	87	106	142	0.55
Infectious gastroenteritis	489	516	574	663	2.58
Chickenpox	20	7	10	26	0.10
Hand, foot, and mouth disease	35	36	27	58	0.23
Erythema infectiosum	8	3	9	5	0.02
Exanthem subitum	115	132	131	161	0.63
Herpangina	4	10	19	16	0.06
Mumps	15	20	28	15	0.06
Kawasaki disease	4	1	3	5	0.02
Cold with exanthems	12	5	14	15	0.06
Influenza					
Acute hemorrhagic conjunctivitis		1			
Epidemic keratoconjunctivitis	5	5	6	7	0.18
Bacterial meningitis	1		1		
Aseptic meningitis		1		1	0.04
Mycoplasma pneumonia	4	2	1	1	0.04
Chlamydial pneumonia (excluding psittacosis)	1	1			
Infectious gastroenteritis (only by Rotavirus)			1		
Influenza-Associated Hospitalizations					

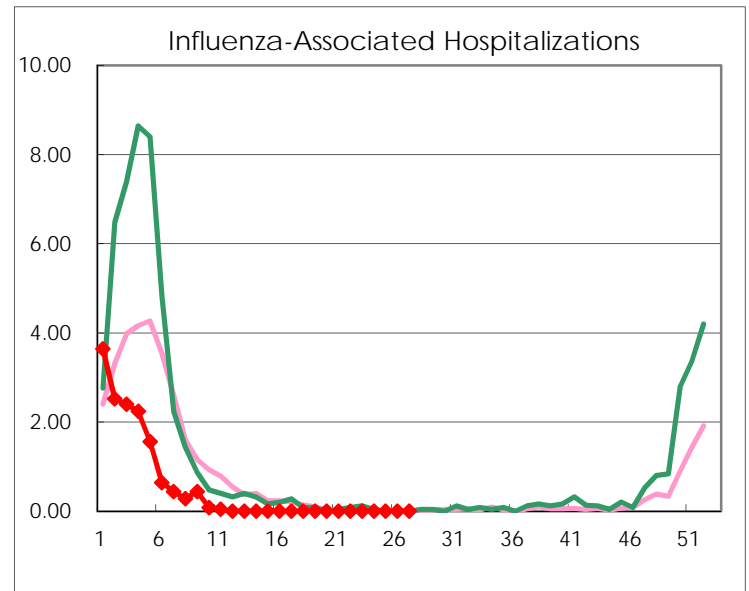
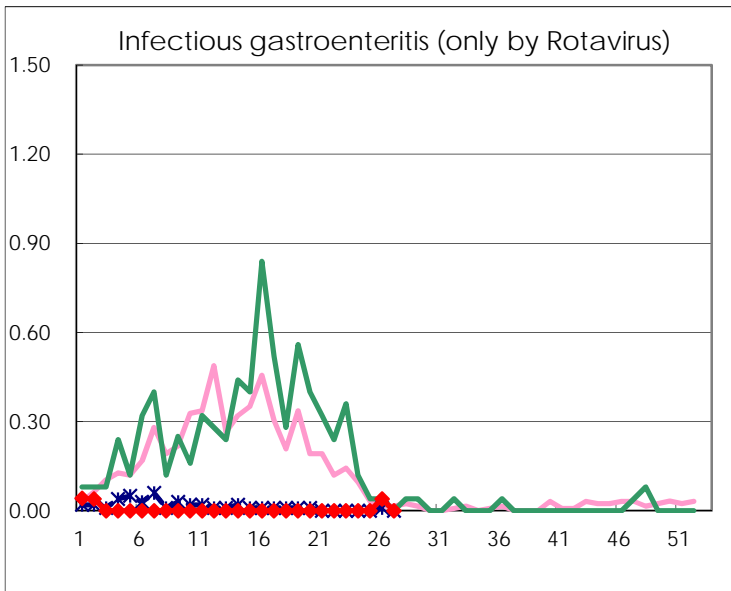
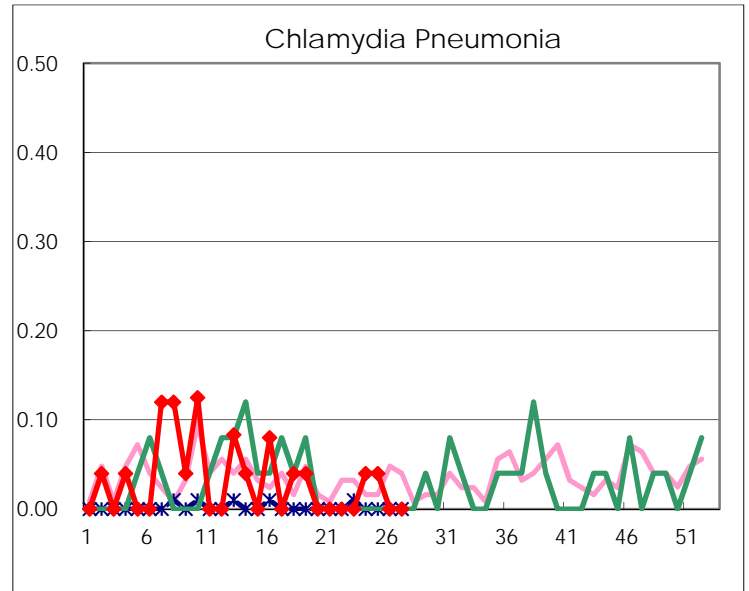
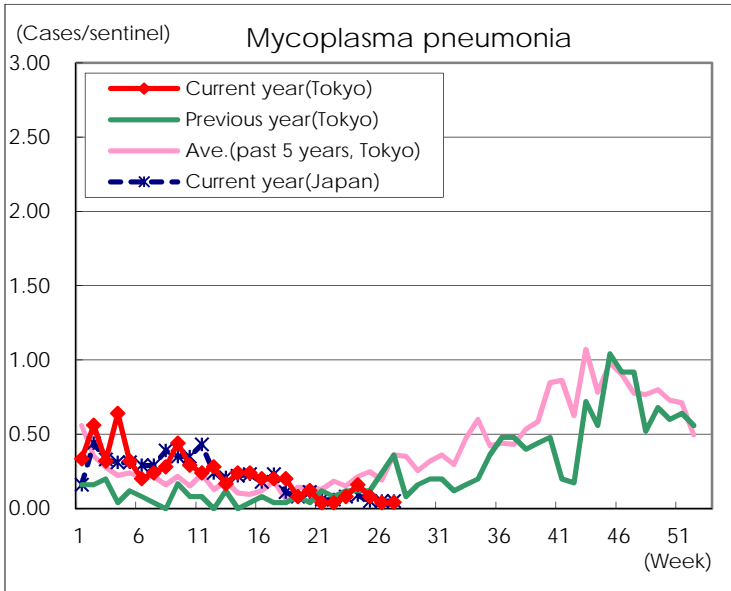
( Blank means 0. )

# Disease Trend Graph (weekly reported cases per sentinel in comparison)









Number of sentinel facilities for weekly reporting		
Types of sentinels	Number of sentinels	Sentinels having reported
Pediatric	264	257
Influenza	419	409
Ophthalmic	39	38
Specially-designated	25	24