

**27 July 2020 / Number 29**  
**( 7/13 ~ 7/19 )**

## Surveillance System in Tokyo, Japan

The infectious diseases which all physicians must report

All physicians must report to health centers the incidence of the diseases which are shown at page one. Health centers electronically report the individual cases to Tokyo Metropolitan Infectious Disease Surveillance Center.

The infectious diseases required to be reported by the sentinels

The numbers of patients who visit the sentinel clinics or hospitals during a week are reported to health centers in Tokyo. And they electronically report the numbers to Tokyo Metropolitan Infectious Disease Surveillance Center. We have about 500 sentinel clinics and hospitals in Tokyo.

Tokyo Metropolitan Institute of Public Health

TEL:81-3-3363-3213 FAX:81-3-5332-7365

e-mail:[www@tokyo-eiken.go.jp](mailto:www@tokyo-eiken.go.jp)

URL:[idsc.tokyo-eiken.go.jp/](http://idsc.tokyo-eiken.go.jp/)

---

Number of patients with the diseases which all physicians must report

Category	Diseases	Tokyo					Japan	
		26th	27th	28th	29th	Cum 2020	29th	Cum 2020
I	Ebola hemorrhagic fever							
	Crimean-Congo hemorrhagic fever							
	Smallpox							
	South American hemorrhagic fever							
	Plague							
	Marburg disease							
	Lassa fever							
II	Acute poliomyelitis							
	Tuberculosis	48	59	38	59	1,361	256	9,450
	Diphtheria							
	Severe Acute Respiratory Syndrome(SARS)							
	Middle East Respiratory Syndrome (MERS)							
	Avian influenza H5N1							
	Avian influenza H7N9							
※	Novel Coronavirus 2019 infection	381	712	1,196	1,600	9,829		
III	Cholera							
	Shigellosis			1		10		54
	Enterohemorrhagic Escherichia coli infection	5	12	9	20	102	108	1,035
	Typhoid fever					1		17
	Paratyphoid fever					1		7
IV	Hepatitis E	5	2	4	1	77	5	266
	West Nile fever							
	Hepatitis A	1		1		20	2	84
	Echinococcosis							9
	Yellow fever							
	Psittacosis							4
	Omsk hemorrhagic fever							
	Relapsing fever						1	4
	Kyasanur forest disease							
	Q fever							
	Rabies							1
	Coccidioidomycosis					1		3
	Monkeypox							
	Zika virus infection							1
	Severe Fever with Thrombocytopenia Syndrome						2	39
	Hemorrhagic fever with renal syndrome							
	Western equine encephalitis							
	Tick-borne encephalitis							
	Anthrax							
	Chikungunya fever							3
	Scrub typhus(Tsutsugamushi disease)					5	1	105
	Dengue fever					12		41
	Eastern equine encephalitis							
	Avian influenza (excluding H5N1 and H7N9)							
	Nipah virus infection							
	Japanese spotted fever						11	131
	Japanese encephalitis							1
	Hantavirus pulmonary syndrome							
	Herpes B virus infection							
	Glanders							
	Brucellosis							1
	Venezuelan equine encephalitis							
	Hendra virus infection							
Epidemic typhus								
Botulism						1	2	
Malaria					5		13	
Tularemia								
Lyme disease		1			1	1	12	
Lyssavirus infection(excluding rabies)								
Rift valley fever								
Melioidosis								
Legionellosis	3	6	4	4	56	76	887	
Leptospirosis							1	
Rocky mountain spotted fever								

Category	Diseases	Tokyo					Japan	
		26th	27th	28th	29th	Cum 2020	29th	Cum 2020
V	Amebiasis	4	3	4	3	70	10	339
	Viral hepatitis(excluding hepatitis A and E)	1		1	1	34	3	139
	CRE infection	7	2	2	2	65	18	883
	Acute Flaccid Paralysis (excluding Acute poliomyelitis)					1		17
	Acute encephalitis(excluding JE and WNE)					21	7	332
	Cryptosporidiosis							3
	Creutzfeldt-Jakob disease	1		1		9	3	79
	Severe invasive streptococcal infections(TSLS)	3	2		2	55	12	449
	Acquired immunodeficiency syndrome (AIDS)	7	2	6	8	192	15	551
	Giardiasis					3		14
	Invasive <i>Haemophilus influenzae</i> disease	1	1			19	2	178
	Invasive meningococcal disease					1		11
	Invasive pneumococcal disease					104	12	1,044
	Varicella (limited to hospitalized case)	1	1		1	28	1	205
	Congenital rubella syndrome							1
	Syphilis	32	31	20	20	815	55	3,110
	Disseminated cryptococcosis	2			1	10	3	76
	Tetanus					4	3	56
	Vancomycin-resistant <i>S. aureus</i> infection							
	Vancomycin-resistant Enterococcus infection					6		74
Pertussis	2	4	1		228	14	2,587	
Rubella	1				21		84	
Measles					2		12	
MDRA infection							4	

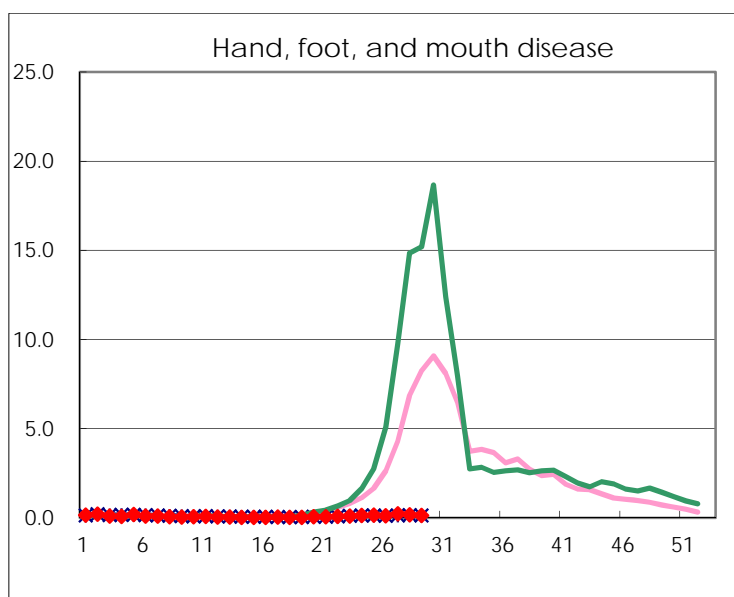
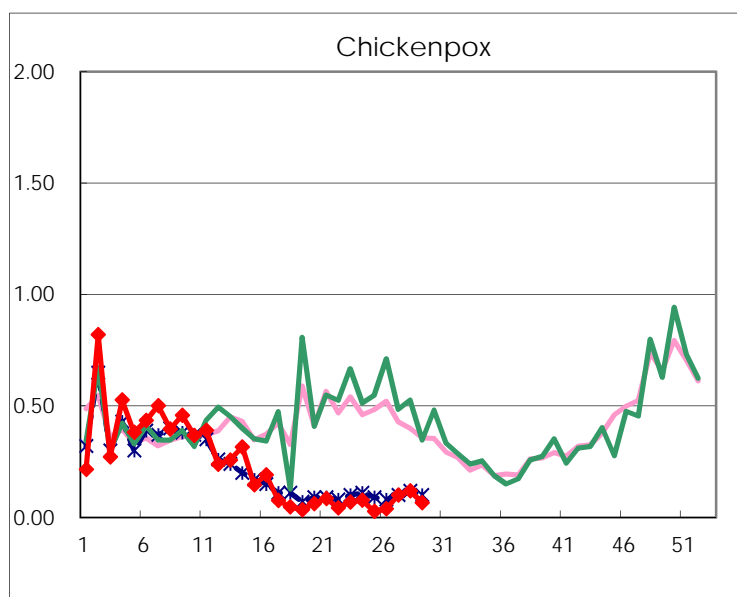
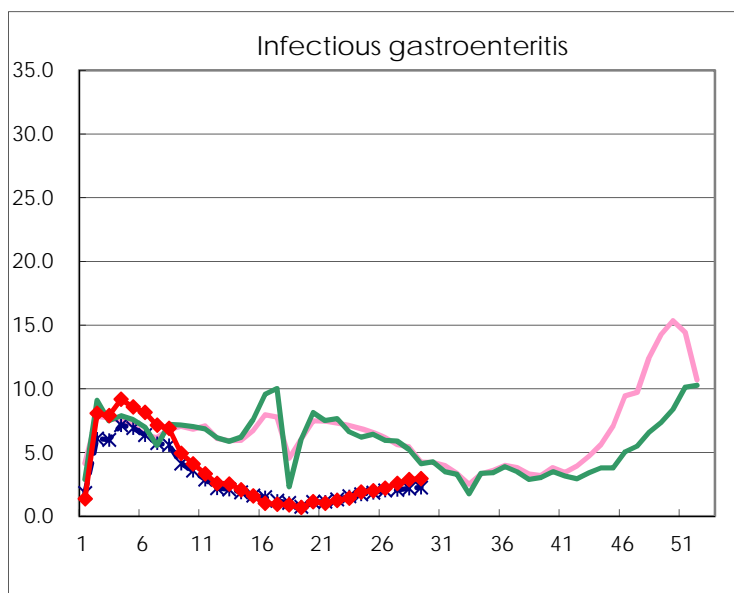
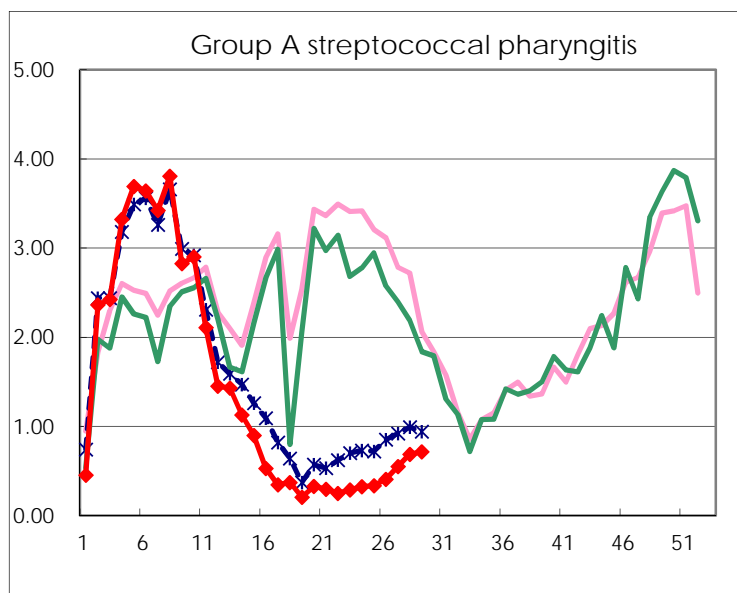
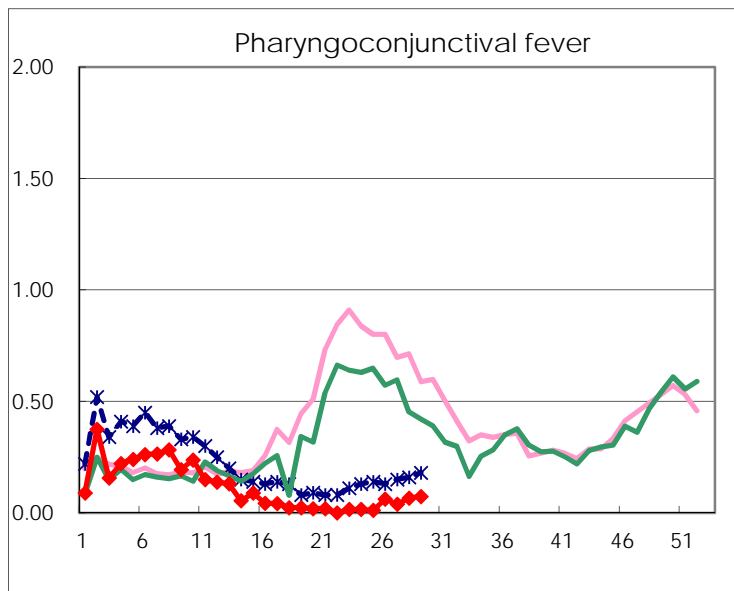
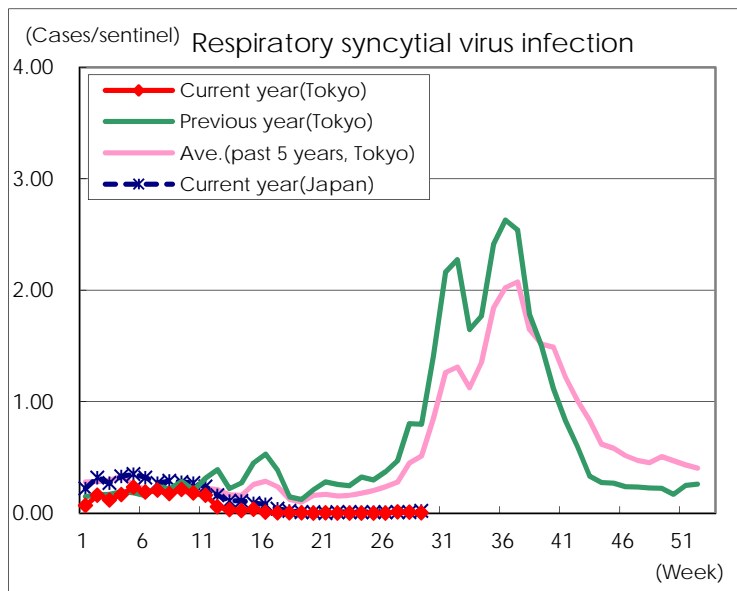
※ Designated infectious disease

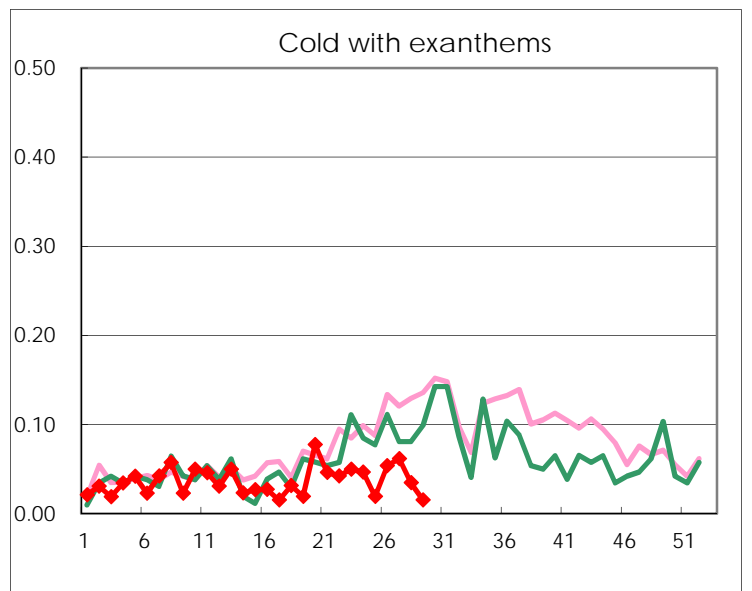
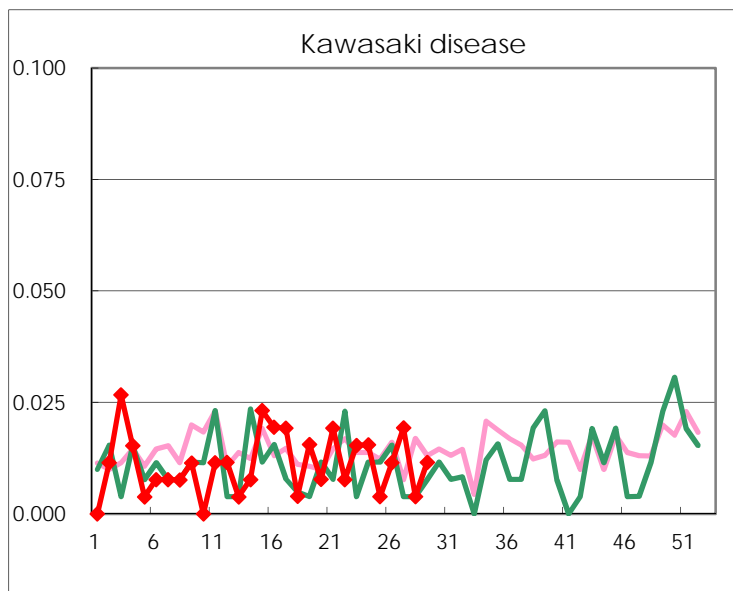
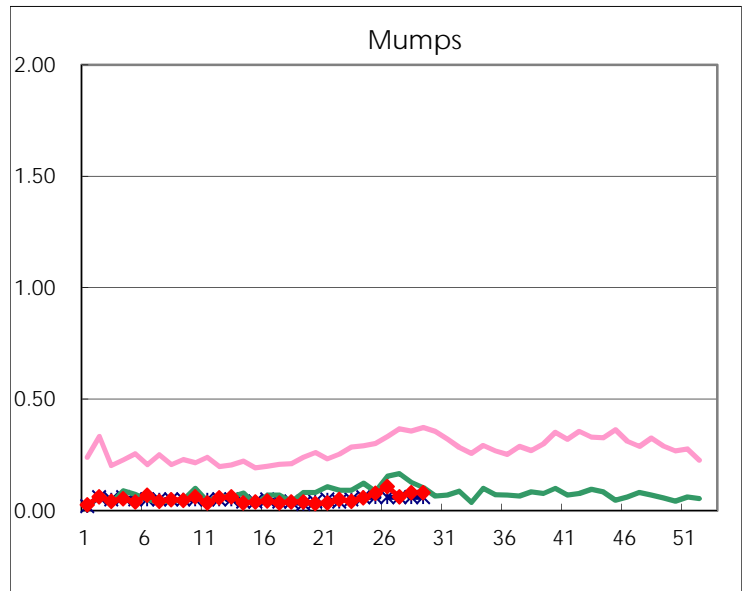
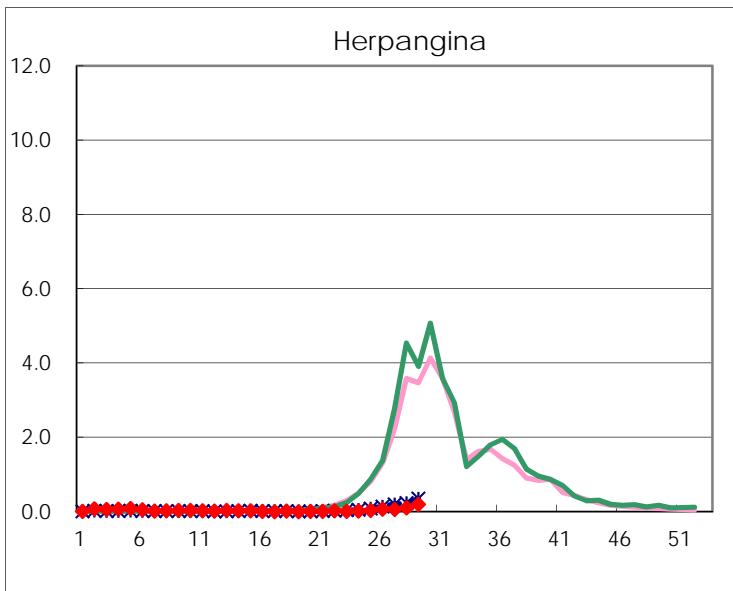
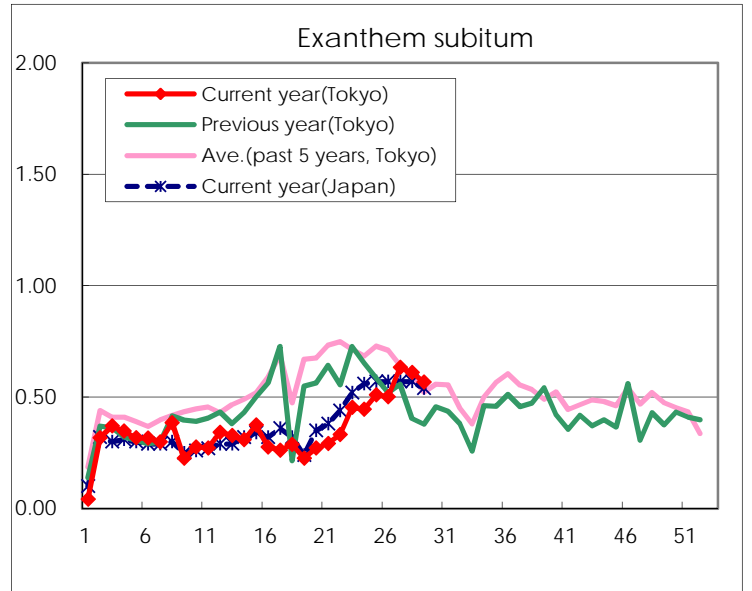
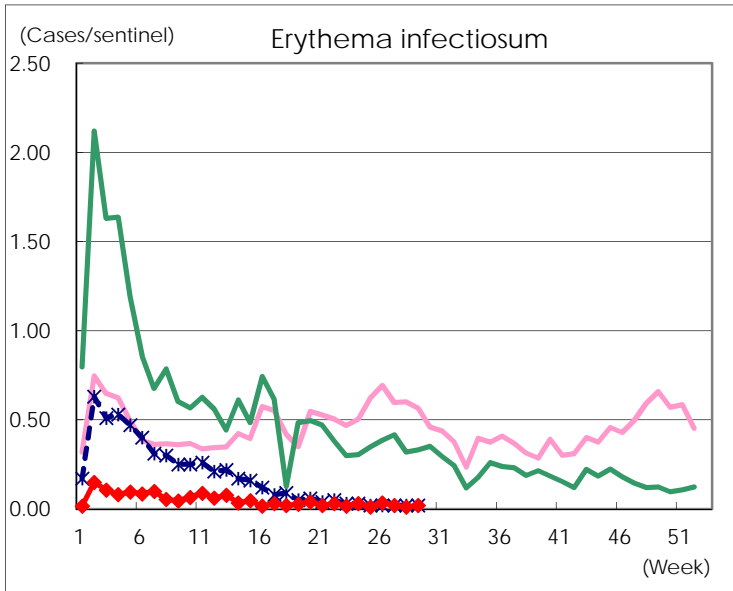
Number of patients with the diseases to be reported  
by the designated clinics and hospitals

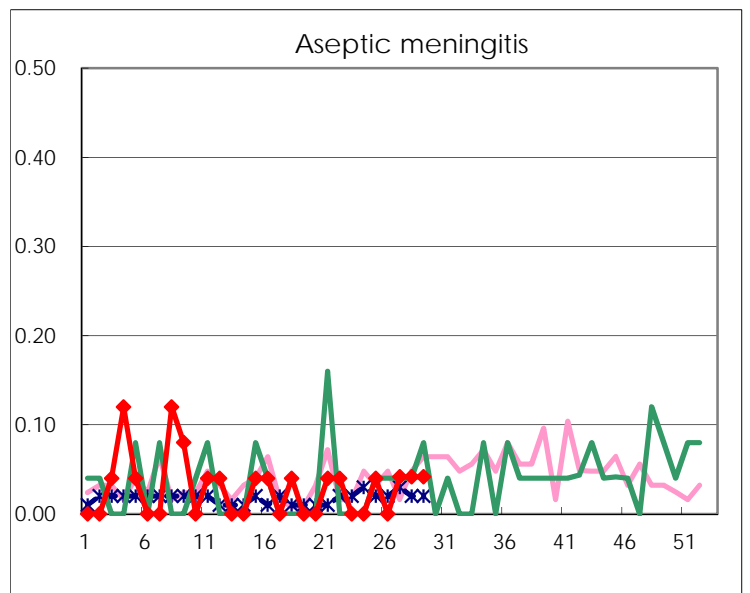
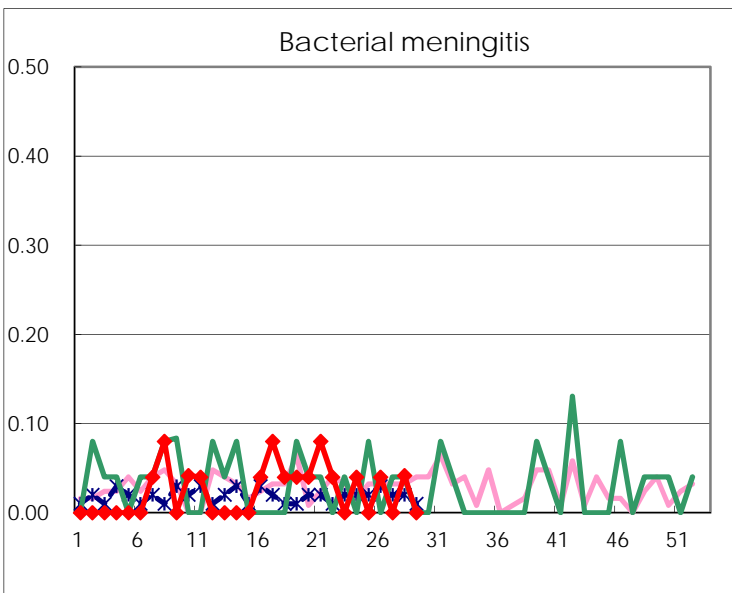
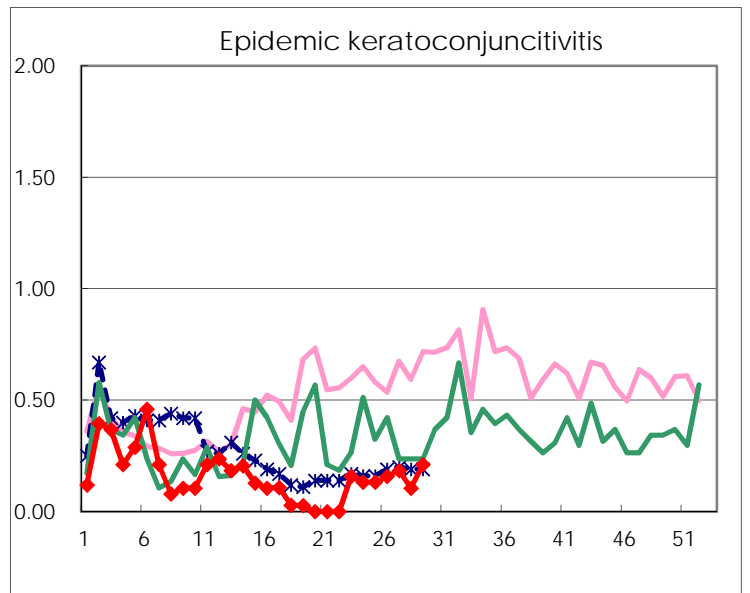
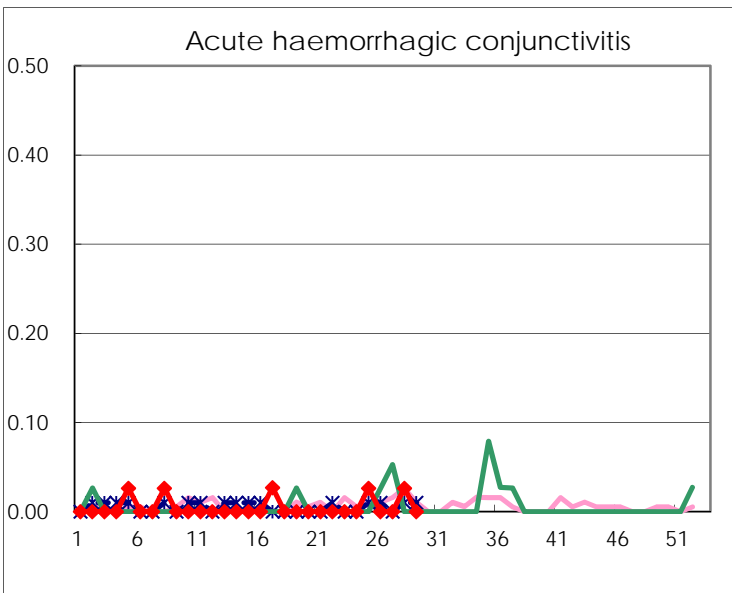
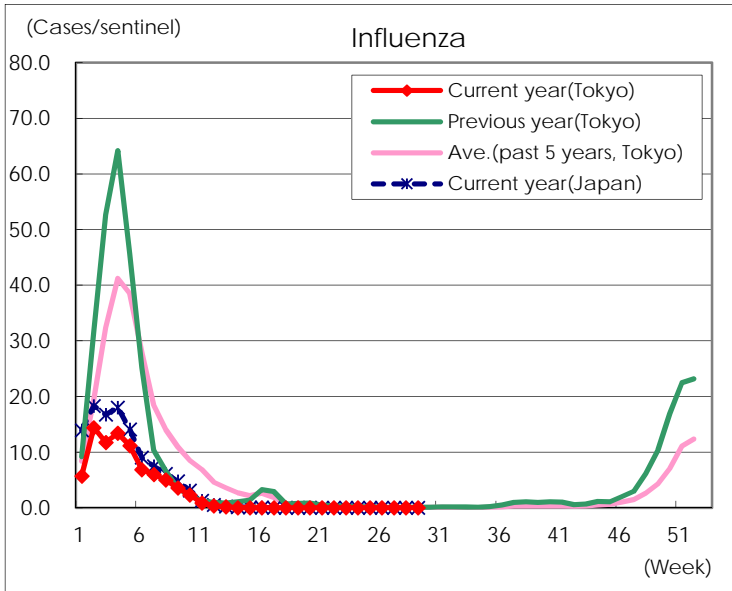
Diseases	Tokyo				
	26th	27th	28th	29th	/sentinel
Respiratory syncytial virus infection		3	2	1	
Pharyngoconjunctival fever	16	10	17	19	0.07
Group A streptococcal pharyngitis	106	142	178	185	0.71
Infectious gastroenteritis	574	663	740	764	2.95
Chickenpox	10	26	31	17	0.07
Hand, foot, and mouth disease	27	58	44	33	0.13
Erythema infectiosum	9	5	3	5	0.02
Exanthem subitum	131	164	158	147	0.57
Herpangina	19	16	28	51	0.20
Mumps	28	16	21	21	0.08
Kawasaki disease	3	5	1	3	0.01
Cold with exanthems	14	16	9	4	0.02
Influenza					
Acute hemorrhagic conjunctivitis			1		
Epidemic keratoconjunctivitis	6	7	4	8	0.21
Bacterial meningitis	1		1		
Aseptic meningitis		1	1	1	0.04
Mycoplasma pneumonia	1	1	1		
Chlamydial pneumonia (excluding psittacosis)					
Infectious gastroenteritis (only by Rotavirus)	1		1		
Influenza-Associated Hospitalizations					

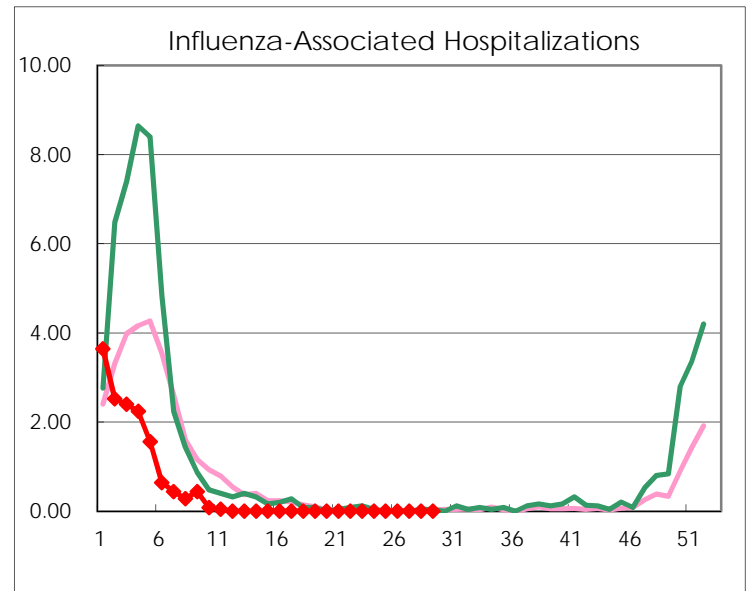
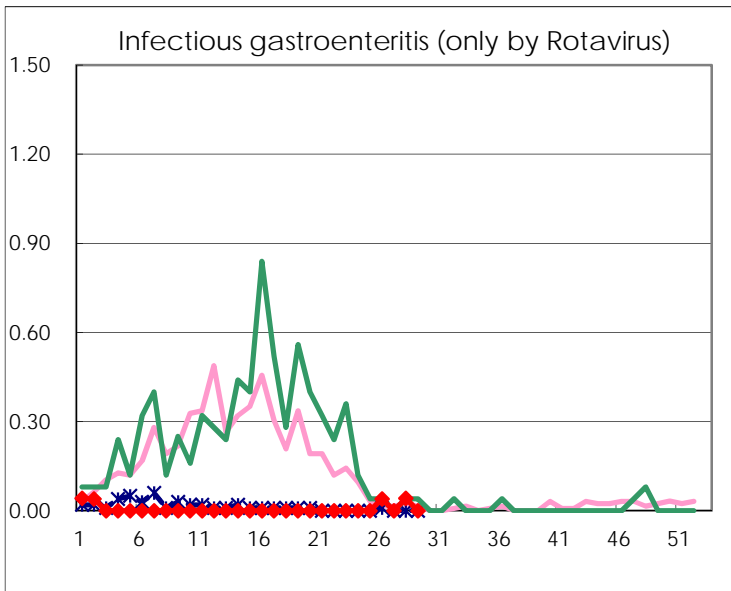
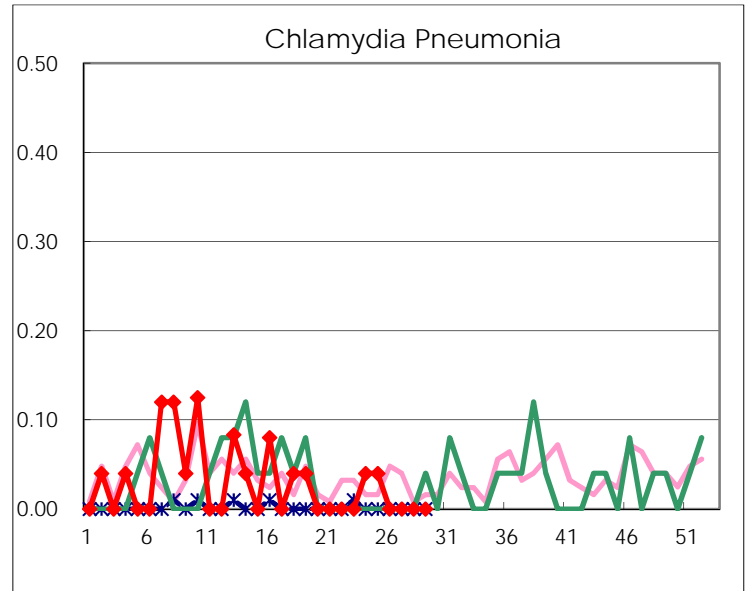
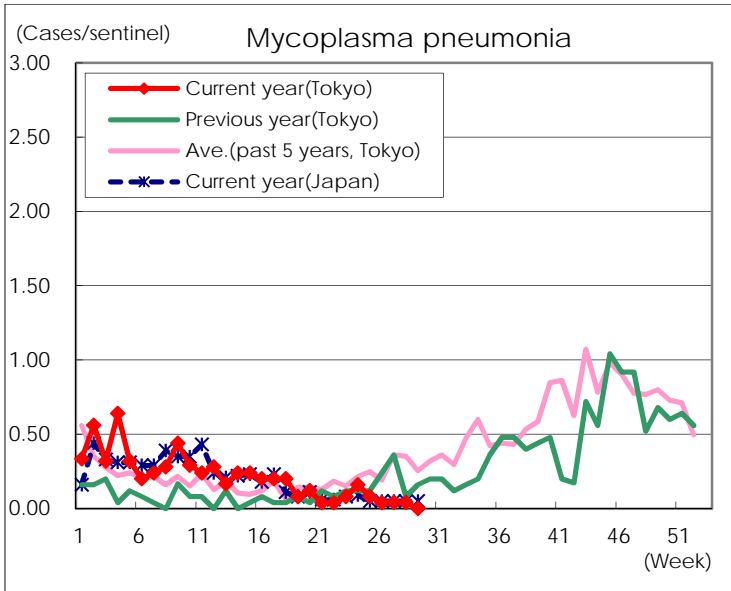
( Blank means 0. )

# Disease Trend Graph (weekly reported cases per sentinel in comparison)









Number of sentinel facilities for weekly reporting		
Types of sentinels	Number of sentinels	Sentinels having reported
Pediatric	264	259
Influenza	419	413
Ophthalmic	39	38
Specially-designated	25	24