

6 August 2020 / Number 31

(7/27 ~ 8/2)

Surveillance System in Tokyo, Japan

The infectious diseases which all physicians must report

All physicians must report to health centers the incidence of the diseases which are shown at page one. Health centers electronically report the individual cases to Tokyo Metropolitan Infectious Disease Surveillance Center.

The infectious diseases required to be reported by the sentinels

The numbers of patients who visit the sentinel clinics or hospitals during a week are reported to health centers in Tokyo. And they electronically report the numbers to Tokyo Metropolitan Infectious Disease Surveillance Center. We have about 500 sentinel clinics and hospitals in Tokyo.

Tokyo Metropolitan Institute of Public Health

TEL:81-3-3363-3213 FAX:81-3-5332-7365

e-mail:www@tokyo-eiken.go.jp

URL:idsc.tokyo-eiken.go.jp/

Number of patients with the diseases which all physicians must report

Category	Diseases	Tokyo					Japan	
		28th	29th	30th	31st	Cum 2020	31st	Cum 2020
I	Ebola hemorrhagic fever							
	Crimean-Congo hemorrhagic fever							
	Smallpox							
	South American hemorrhagic fever							
	Plague							
	Marburg disease							
	Lassa fever							
II	Acute poliomyelitis							
	Tuberculosis	40	63	24	47	1,441	241	9,968
	Diphtheria							
	Severe Acute Respiratory Syndrome(SARS)							
	Middle East Respiratory Syndrome (MERS)							
	Avian influenza H5N1							
	Avian influenza H7N9							
※	Novel Coronavirus 2019 infection	1,196	1,602	1,745	2,467	14,043		
III	Cholera						1	1
	Shigellosis	1			1	11	1	55
	Enterohemorrhagic Escherichia coli infection	9	20	10	9	121	85	1,240
	Typhoid fever				1	2		19
	Paratyphoid fever					1		7
IV	Hepatitis E	4	1	1		78	5	275
	West Nile fever							
	Hepatitis A	1				20	2	87
	Echinococcosis							10
	Yellow fever							
	Psittacosis							4
	Omsk hemorrhagic fever							
	Relapsing fever						1	7
	Kyasanur forest disease							
	Q fever							
	Rabies							1
	Coccidioidomycosis					1		3
	Monkeypox							
	Zika virus infection							1
	Severe Fever with Thrombocytopenia Syndrome						2	44
	Hemorrhagic fever with renal syndrome							
	Western equine encephalitis							
	Tick-borne encephalitis							
	Anthrax							
	Chikungunya fever							3
	Scrub typhus(Tsutsugamushi disease)					5		107
	Dengue fever					12		41
	Eastern equine encephalitis							
	Avian influenza (excluding H5N1 and H7N9)							
	Nipah virus infection							
	Japanese spotted fever						6	143
	Japanese encephalitis							1
	Hantavirus pulmonary syndrome							
	Herpes B virus infection							
	Glanders							
	Brucellosis							1
	Venezuelan equine encephalitis							
	Hendra virus infection							
Epidemic typhus								
Botulism			1		1		3	
Malaria					5		14	
Tularemia								
Lyme disease					1	3	16	
Lyssavirus infection(excluding rabies)								
Rift valley fever								
Melioidosis								
Legionellosis	4	4	8	5	69	62	1,071	
Leptospirosis							1	
Rocky mountain spotted fever								

Category	Diseases	Tokyo					Japan	
		28th	29th	30th	31st	Cum 2020	31st	Cum 2020
V	Amebiasis	4	3	1	1	72	8	358
	Viral hepatitis(excluding hepatitis A and E)	1	1	2	1	37	2	148
	CRE infection	2	2	4	2	71	24	941
	Acute Flaccid Paralysis (excluding Acute poliomyelitis)				1	2	2	20
	Acute encephalitis(excluding JE and WNE)			1	1	23	7	352
	Cryptosporidiosis							3
	Creutzfeldt-Jakob disease	1			2	11	2	87
	Severe invasive streptococcal infections(TSLS)		2		1	56	5	462
	Acquired immunodeficiency syndrome (AIDS)	8	9	7	4	206	11	592
	Giardiasis		1			4		15
	Invasive <i>Haemophilus influenzae</i> disease					19	2	182
	Invasive meningococcal disease					1		11
	Invasive pneumococcal disease			1	1	106	16	1,086
	Varicella (limited to hospitalized case)		1	2		30	4	216
	Congenital rubella syndrome							1
	Syphilis	37	34	11	14	872	64	3,323
	Disseminated cryptococcosis		1			10	2	85
	Tetanus					4	1	59
	Vancomycin-resistant <i>S. aureus</i> infection							
	Vancomycin-resistant Enterococcus infection					6	1	73
Pertussis	1		1	1	230	11	2,614	
Rubella					21		85	
Measles					2		12	
MDRA infection							5	

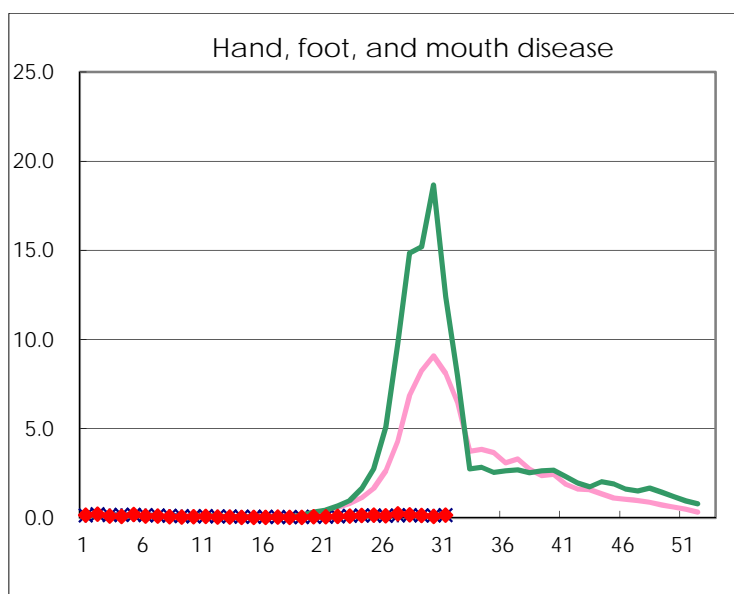
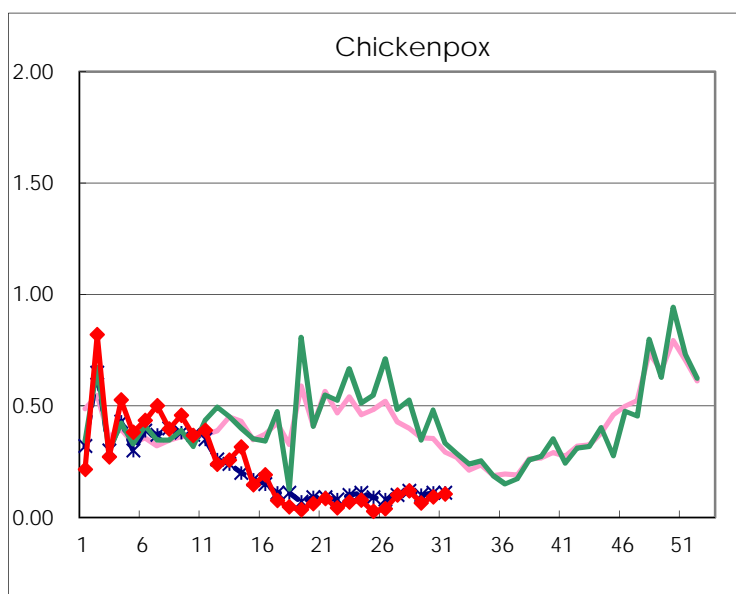
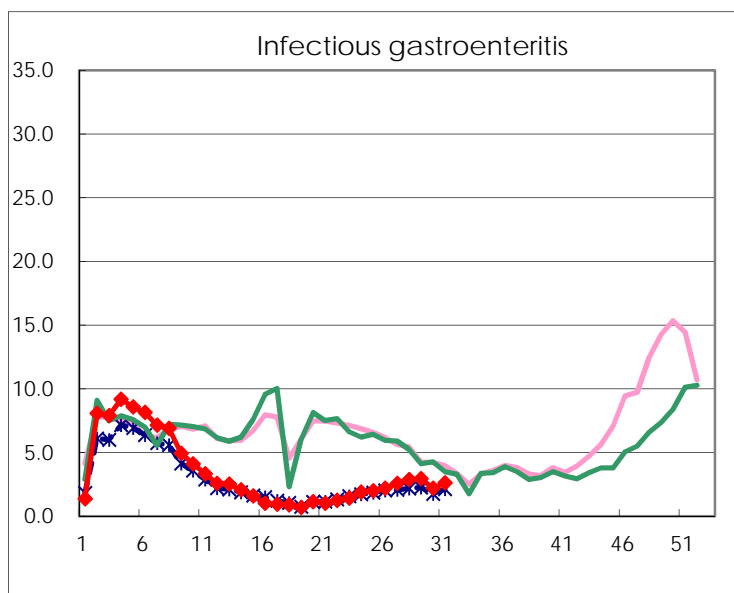
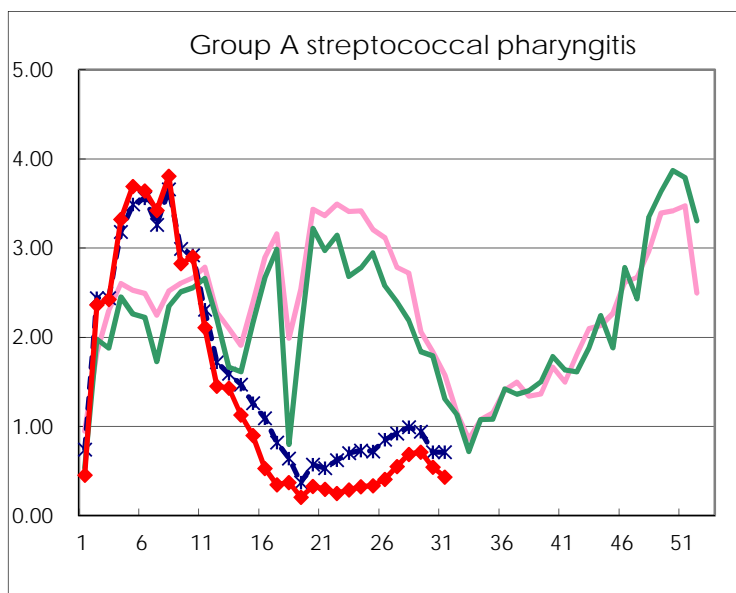
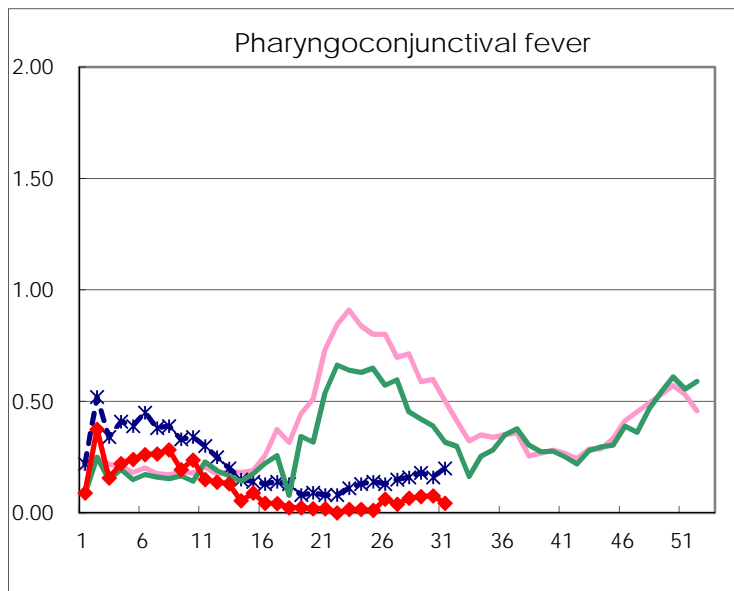
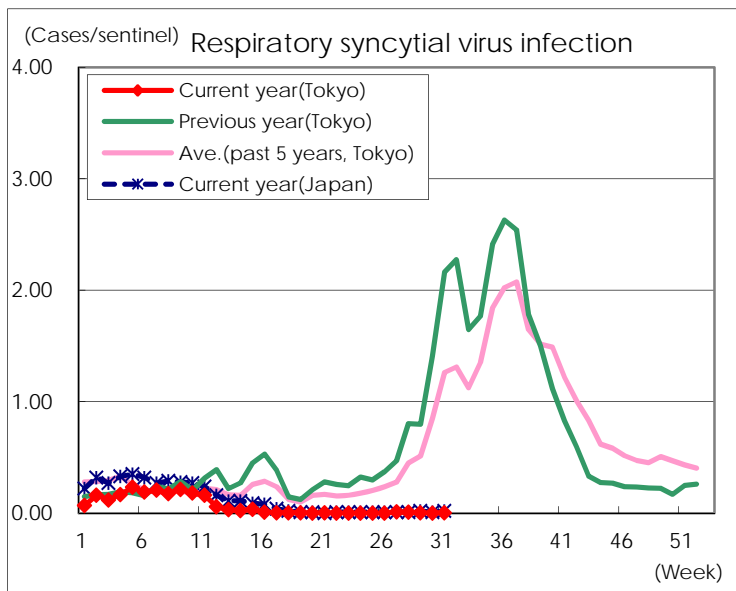
※ Designated infectious disease

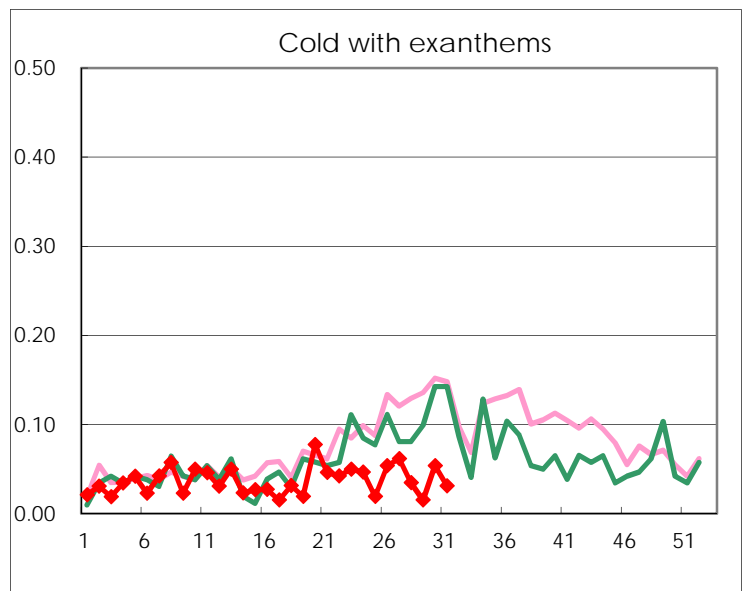
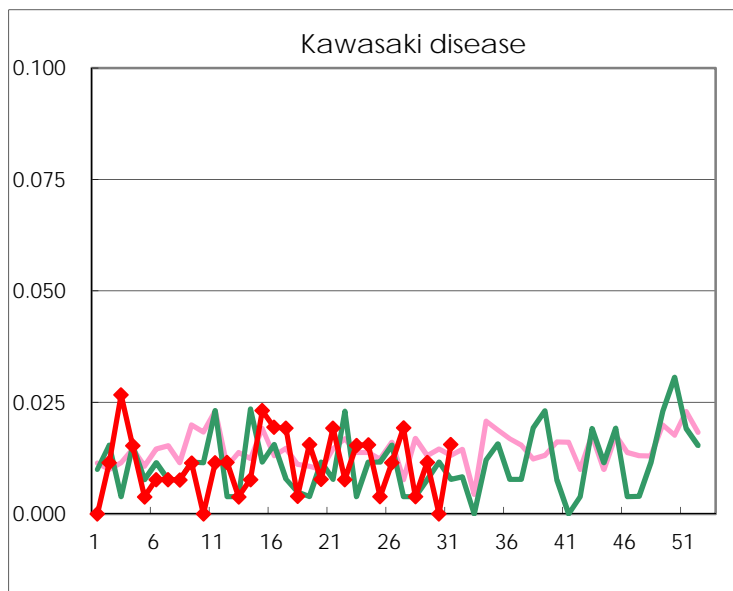
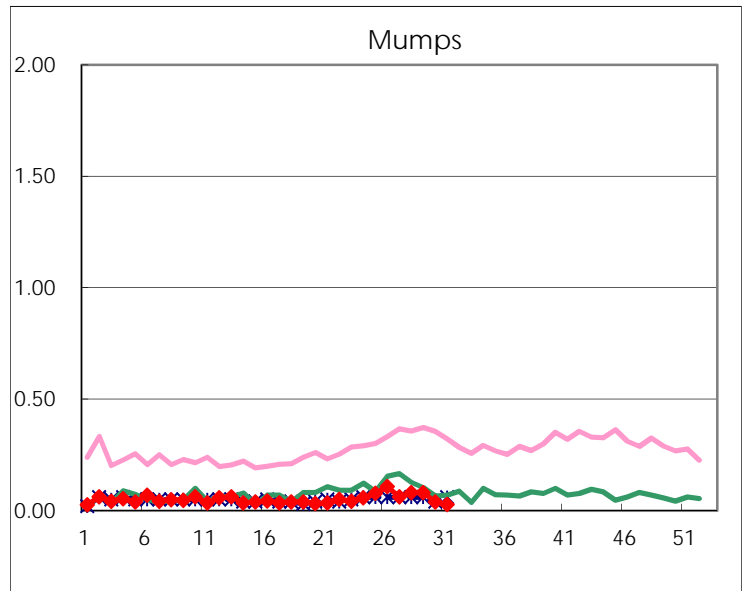
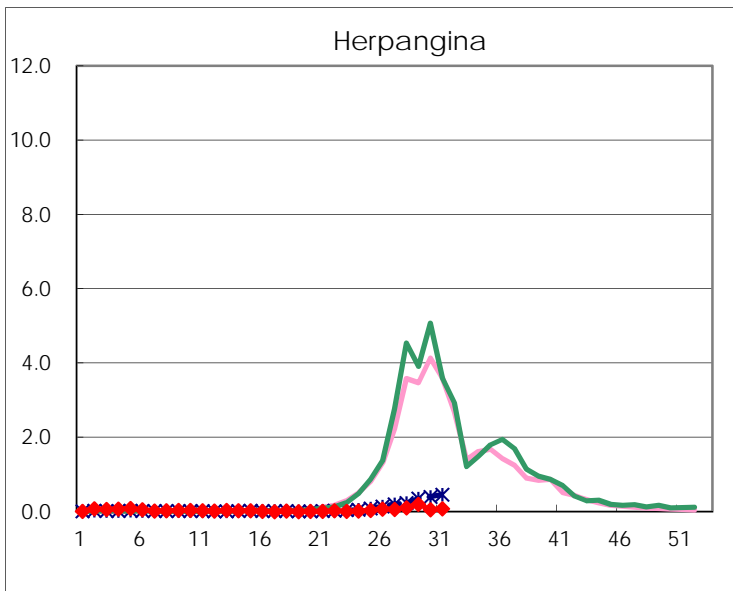
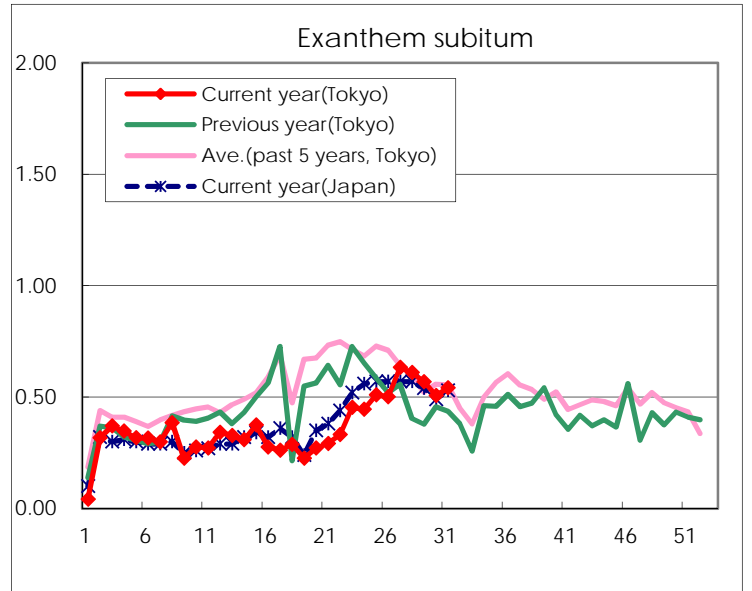
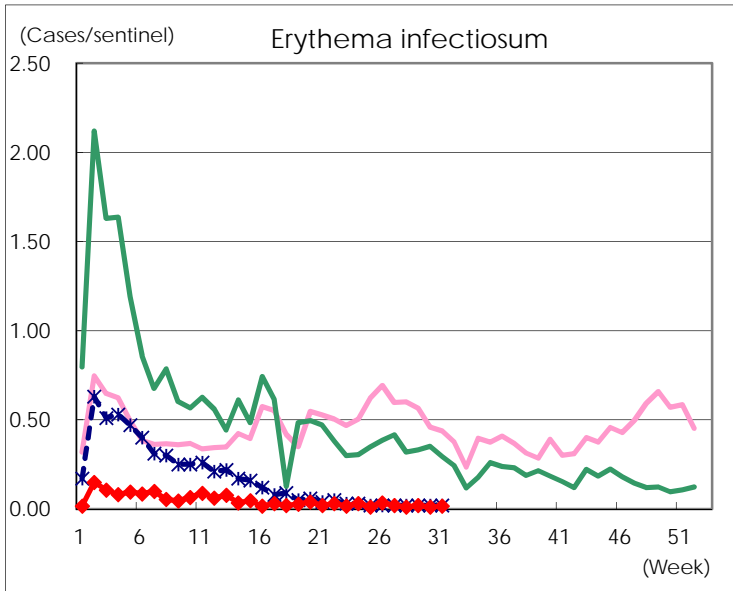
Number of patients with the diseases to be reported
by the designated clinics and hospitals

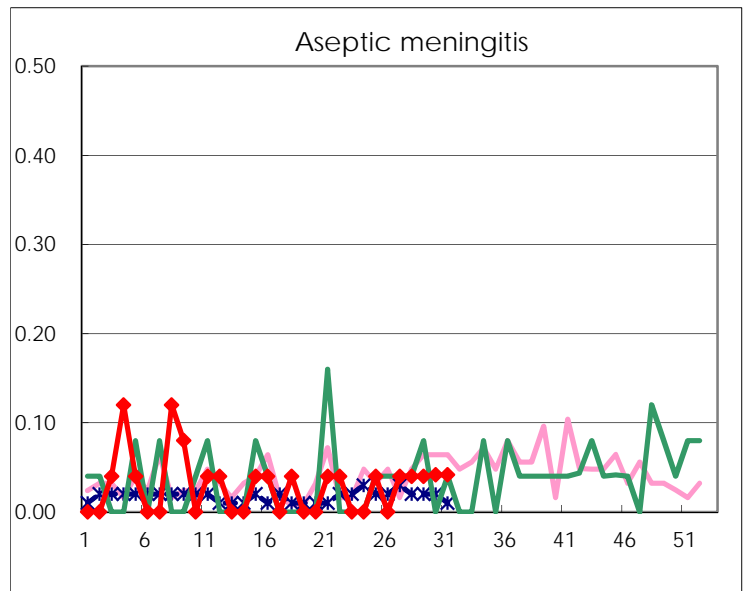
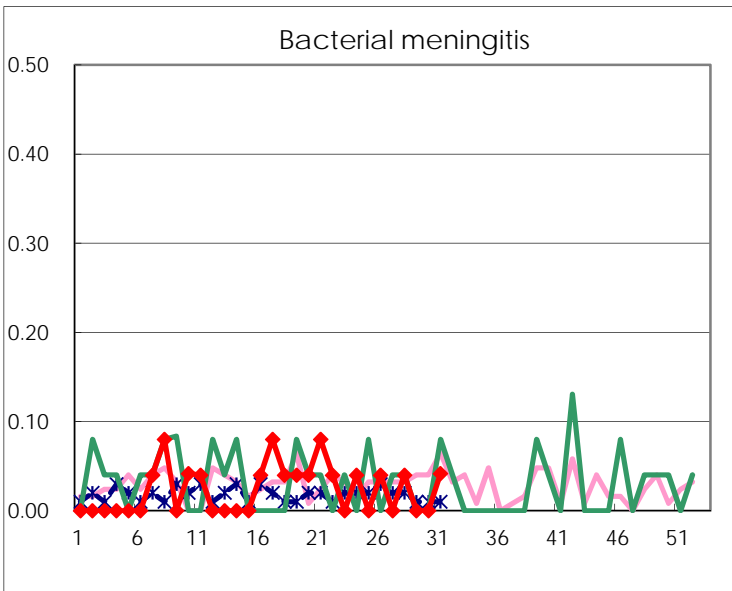
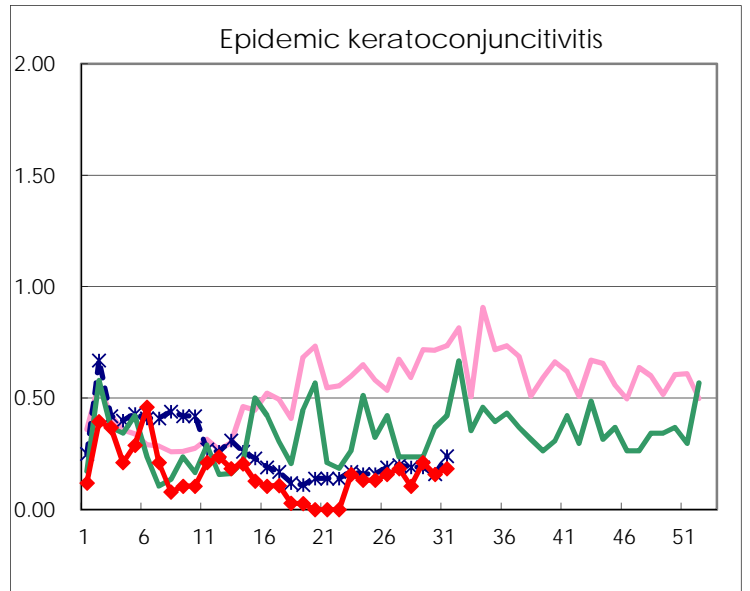
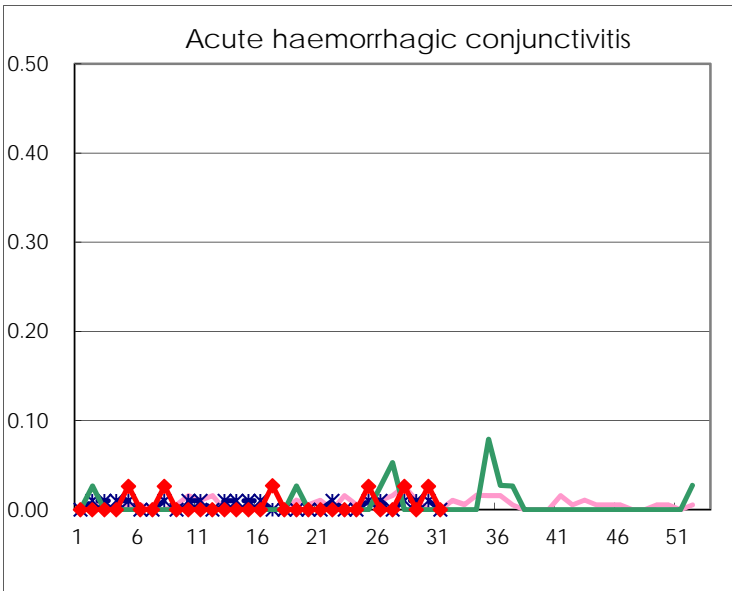
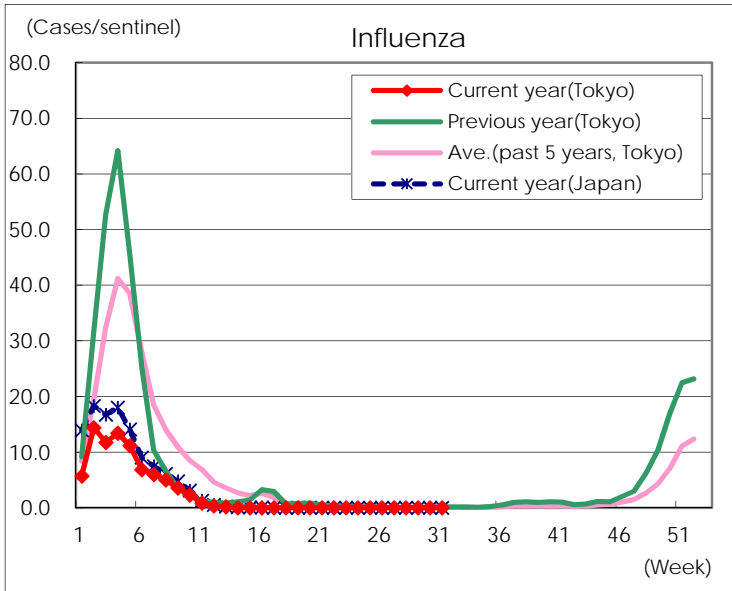
Diseases	Tokyo				
	28th	29th	30th	31st	/sentinel
Respiratory syncytial virus infection	2	1		1	
Pharyngoconjunctival fever	17	19	20	11	0.04
Group A streptococcal pharyngitis	178	185	141	111	0.43
Infectious gastroenteritis	740	765	567	670	2.61
Chickenpox	31	17	24	27	0.11
Hand, foot, and mouth disease	44	33	19	35	0.14
Erythema infectiosum	3	5	3	4	0.02
Exanthem subitum	158	148	132	139	0.54
Herpangina	28	51	14	20	0.08
Mumps	21	21	10	7	0.03
Kawasaki disease	1	3		4	0.02
Cold with exanthems	9	4	14	8	0.03
Influenza					
Acute hemorrhagic conjunctivitis	1		1		
Epidemic keratoconjunctivitis	4	8	6	7	0.18
Bacterial meningitis	1			1	0.04
Aseptic meningitis	1	1	1	1	0.04
Mycoplasma pneumonia	1			1	0.04
Chlamydial pneumonia (excluding psittacosis)				1	0.04
Infectious gastroenteritis (only by Rotavirus)	1				
Influenza-Associated Hospitalizations					

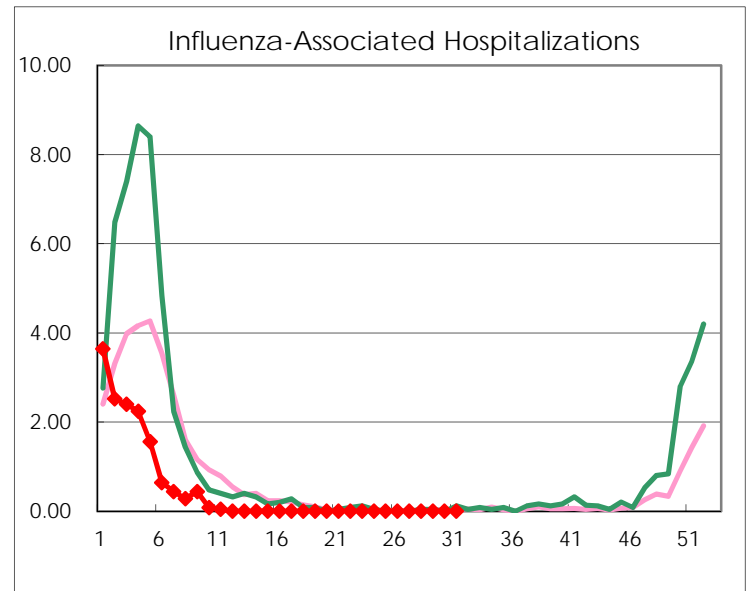
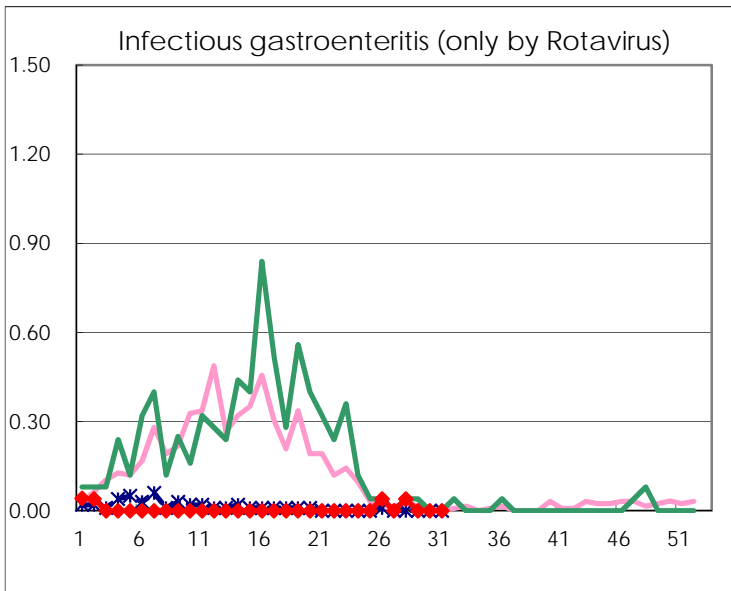
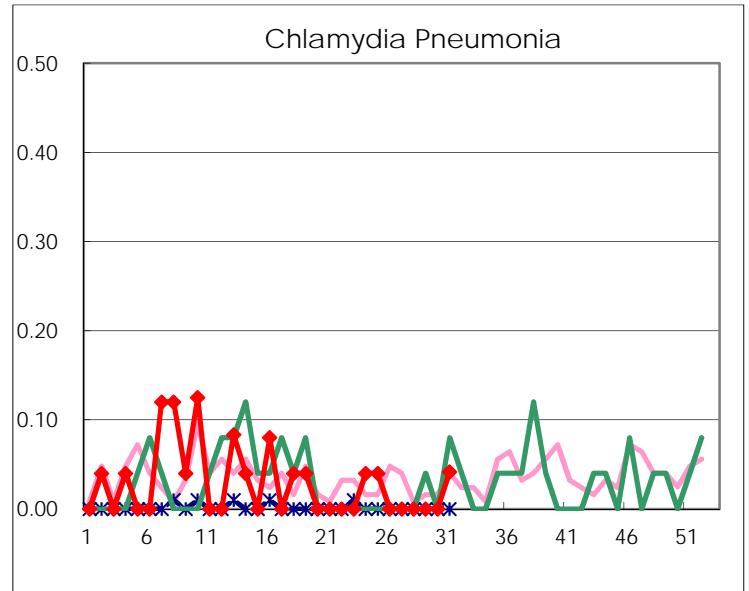
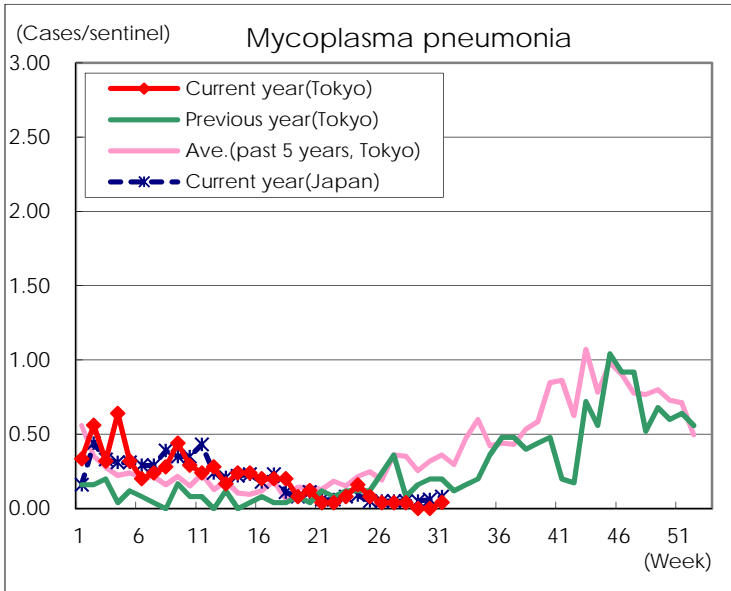
(Blank means 0.)

Disease Trend Graph (weekly reported cases per sentinel in comparison)









Number of sentinel facilities for weekly reporting		
Types of sentinels	Number of sentinels	Sentinels having reported
Pediatric	264	257
Influenza	419	409
Ophthalmic	39	38
Specially-designated	25	24