

**13 August 2020 / Number 32**  
**( 8/3 ~ 8/9 )**

Surveillance System in Tokyo, Japan

The infectious diseases which all physicians must report

All physicians must report to health centers the incidence of the diseases which are shown at page one. Health centers electronically report the individual cases to Tokyo Metropolitan Infectious Disease Surveillance Center.

The infectious diseases required to be reported by the sentinels

The numbers of patients who visit the sentinel clinics or hospitals during a week are reported to health centers in Tokyo. And they electronically report the numbers to Tokyo Metropolitan Infectious Disease Surveillance Center. We have about 500 sentinel clinics and hospitals in Tokyo.

Tokyo Metropolitan Institute of Public Health

TEL:81-3-3363-3213 FAX:81-3-5332-7365

e-mail:[www@tokyo-eiken.go.jp](mailto:www@tokyo-eiken.go.jp)

URL:[idsc.tokyo-eiken.go.jp/](http://idsc.tokyo-eiken.go.jp/)

---

Number of patients with the diseases which all physicians must report

Category	Diseases	Tokyo					Japan	
		29th	30th	31st	32nd	Cum 2020	32nd	Cum 2020
I	Ebola hemorrhagic fever							
	Crimean-Congo hemorrhagic fever							
	Smallpox							
	South American hemorrhagic fever							
	Plague							
	Marburg disease							
	Lassa fever							
II	Acute poliomyelitis							
	Tuberculosis	65	26	47	43	1,488	240	10,303
	Diphtheria							
	Severe Acute Respiratory Syndrome(SARS)							
	Middle East Respiratory Syndrome (MERS)							
	Avian influenza H5N1							
	Avian influenza H7N9							
※	Novel Coronavirus 2019 infection	1,602	1,745	2,467				
III	Cholera							1
	Shigellosis			1		11		55
	Enterohemorrhagic Escherichia coli infection	20	12	10	4	128	62	1,309
	Typhoid fever			1		2		19
	Paratyphoid fever					1		7
IV	Hepatitis E	1	1	1	1	80	5	281
	West Nile fever							
	Hepatitis A					20	2	90
	Echinococcosis							10
	Yellow fever							
	Psittacosis							4
	Omsk hemorrhagic fever							
	Relapsing fever							7
	Kyasanur forest disease							
	Q fever							
	Rabies							1
	Coccidioidomycosis					1		3
	Monkeypox							
	Zika virus infection							1
	Severe Fever with Thrombocytopenia Syndrome							44
	Hemorrhagic fever with renal syndrome							
	Western equine encephalitis							
	Tick-borne encephalitis							
	Anthrax							
	Chikungunya fever							3
	Scrub typhus(Tsutsugamushi disease)				1	6	1	109
	Dengue fever					12		41
	Eastern equine encephalitis							
	Avian influenza (excluding H5N1 and H7N9)							
	Nipah virus infection							
	Japanese spotted fever						8	151
	Japanese encephalitis							1
	Hantavirus pulmonary syndrome							
	Herpes B virus infection							
	Glanders							
	Brucellosis							1
	Venezuelan equine encephalitis							
	Hendra virus infection							
Epidemic typhus								
Botulism		1			1		3	
Malaria						5	15	
Tularemia								
Lyme disease					1		16	
Lyssavirus infection(excluding rabies)								
Rift valley fever								
Melioidosis								
Legionellosis	4	8	5	6	75	62	1,154	
Leptospirosis							1	
Rocky mountain spotted fever								

Category	Diseases	Tokyo					Japan	
		29th	30th	31st	32nd	Cum 2020	32nd	Cum 2020
V	Amebiasis	3	1	2		73	3	362
	Viral hepatitis(excluding hepatitis A and E)	1	2	1		37	1	151
	CRE infection	3	4	2	2	74	18	979
	Acute Flaccid Paralysis (excluding Acute poliomyelitis)			1		2	1	20
	Acute encephalitis(excluding JE and WNE)		1	1		23	2	357
	Cryptosporidiosis						1	4
	Creutzfeldt-Jakob disease			2		11	2	91
	Severe invasive streptococcal infections(TSLS)	2		1	3	60	5	476
	Acquired immunodeficiency syndrome (AIDS)	9	7	4	4	212	5	612
	Giardiasis	1				4		15
	Invasive <i>Haemophilus influenzae</i> disease					19		183
	Invasive meningococcal disease					1		11
	Invasive pneumococcal disease		1	2	1	108	13	1,110
	Varicella (limited to hospitalized case)	1	2		1	31	2	221
	Congenital rubella syndrome							1
	Syphilis	34	21	20	9	897	36	3,407
	Disseminated cryptococcosis	1				10		86
	Tetanus					4	2	63
	Vancomycin-resistant <i>S. aureus</i> infection							
	Vancomycin-resistant Enterococcus infection					6	1	76
Pertussis		1	1		230	9	2,625	
Rubella					21		85	
Measles					2		12	
MDRA infection							7	

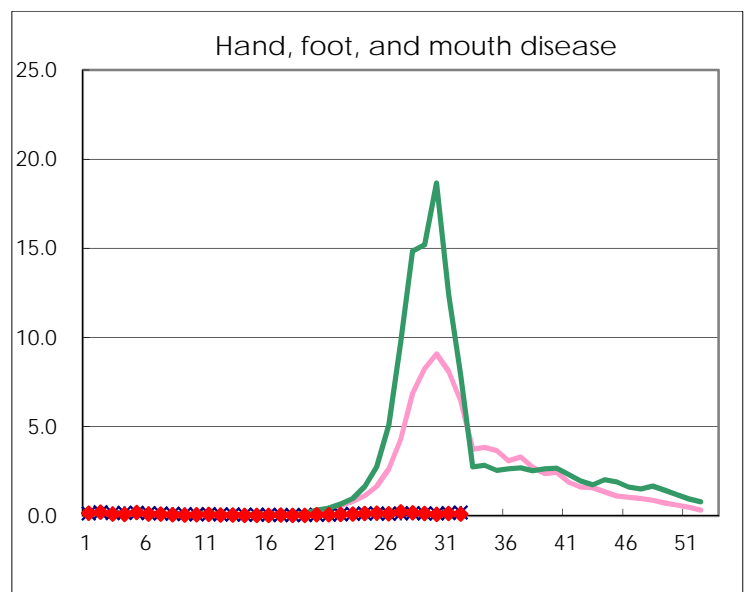
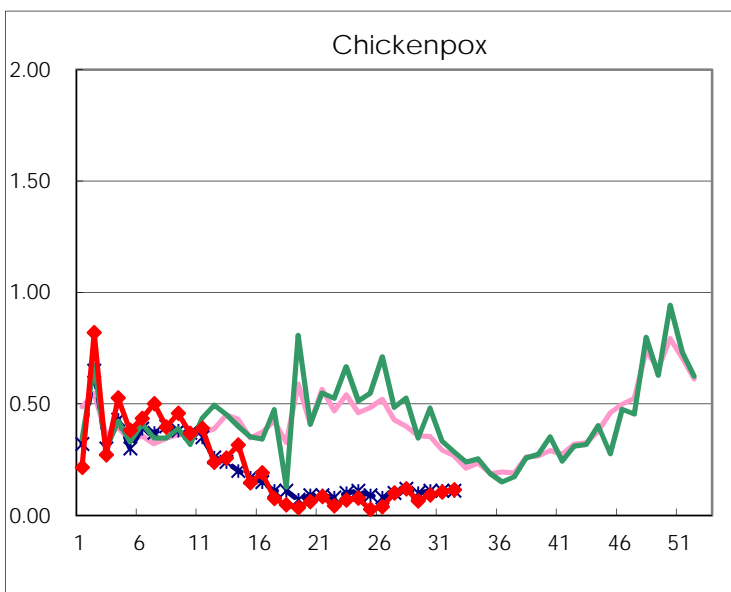
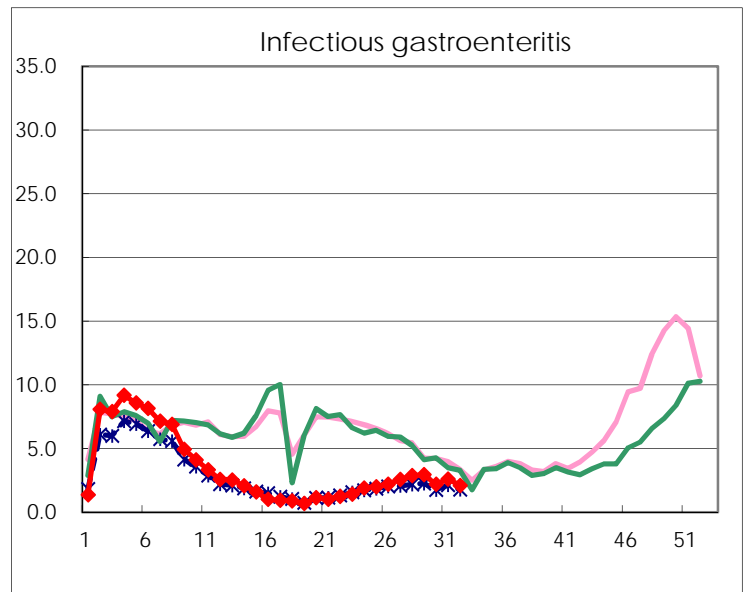
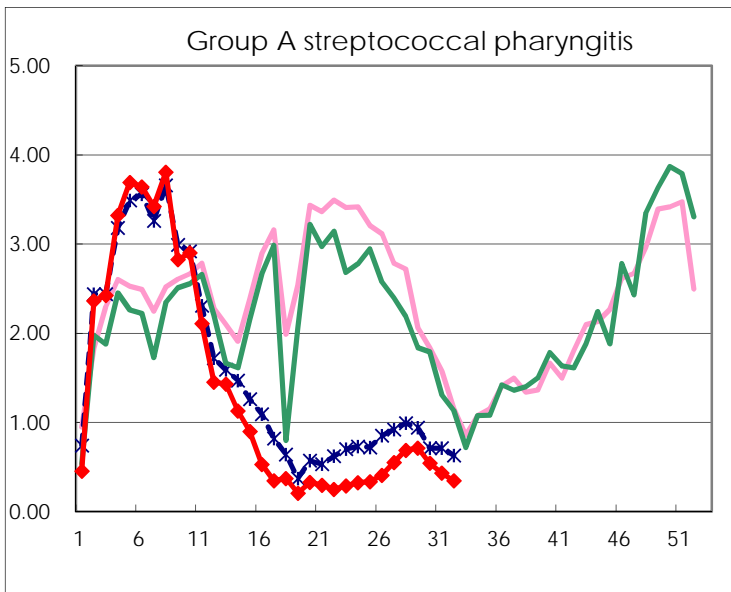
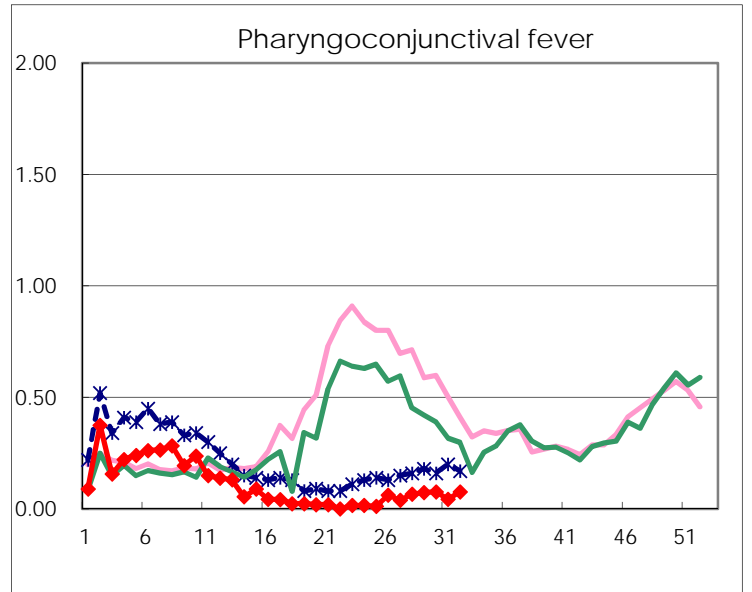
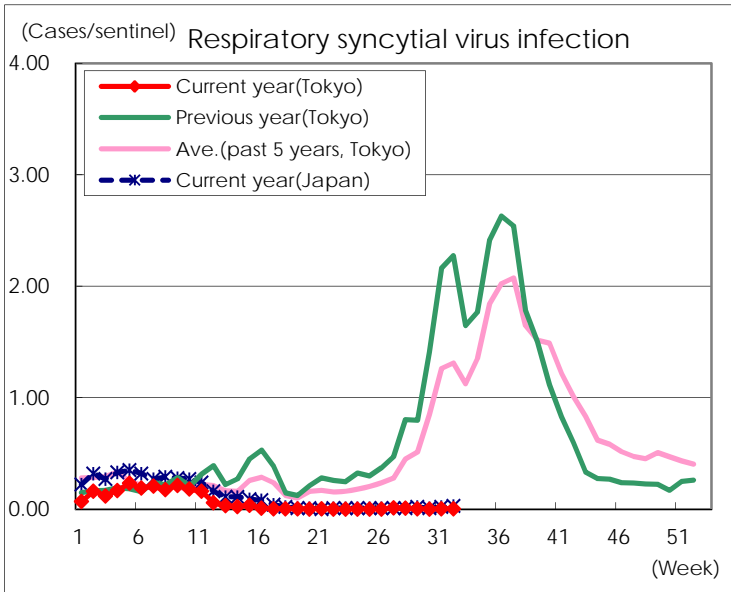
※ Designated infectious disease

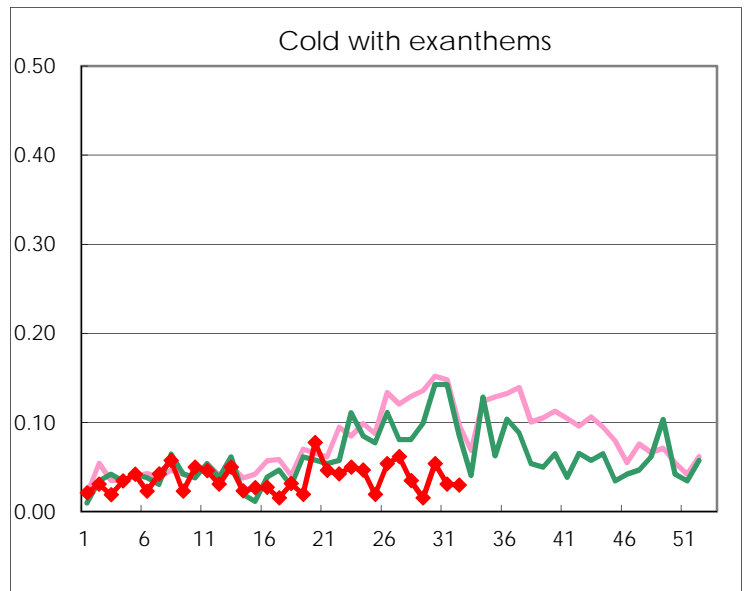
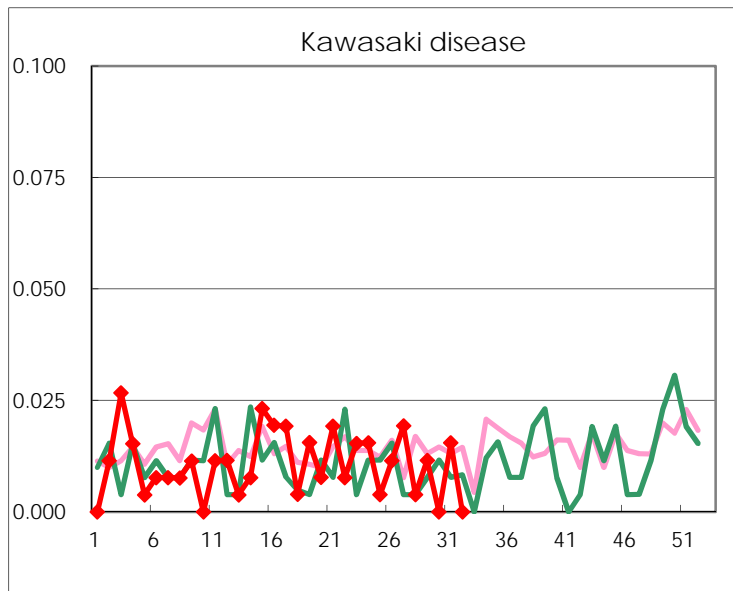
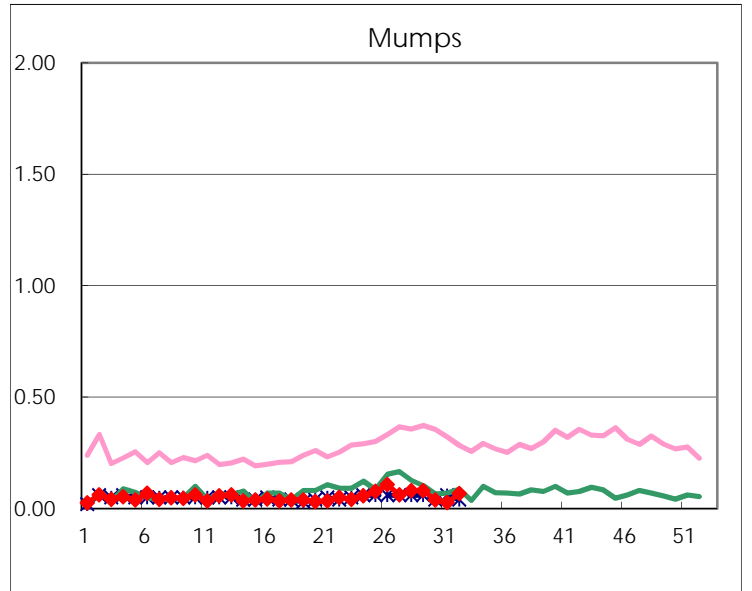
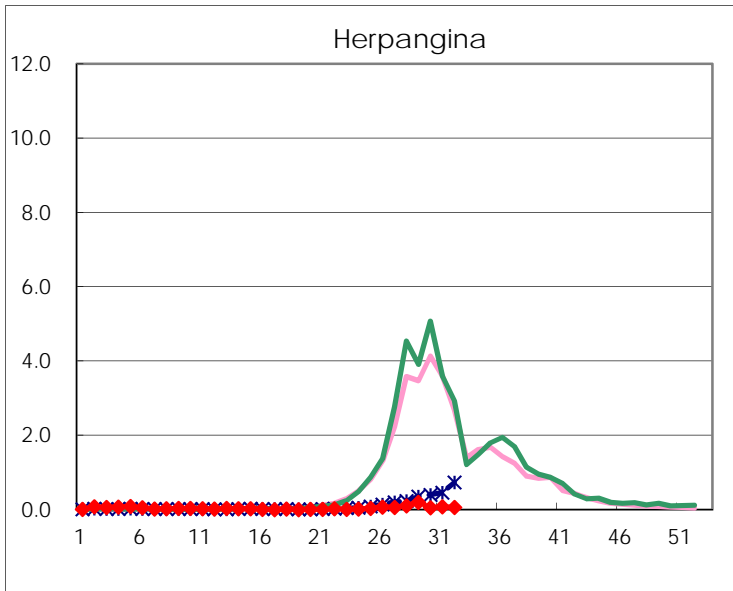
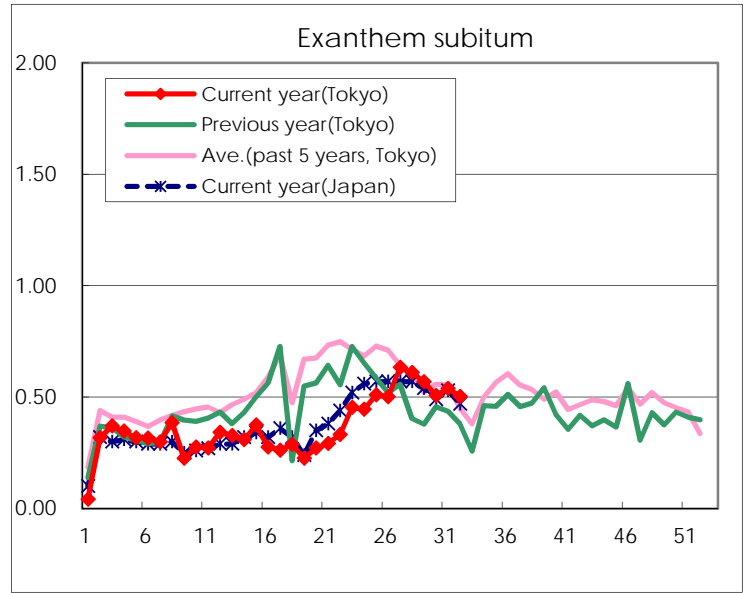
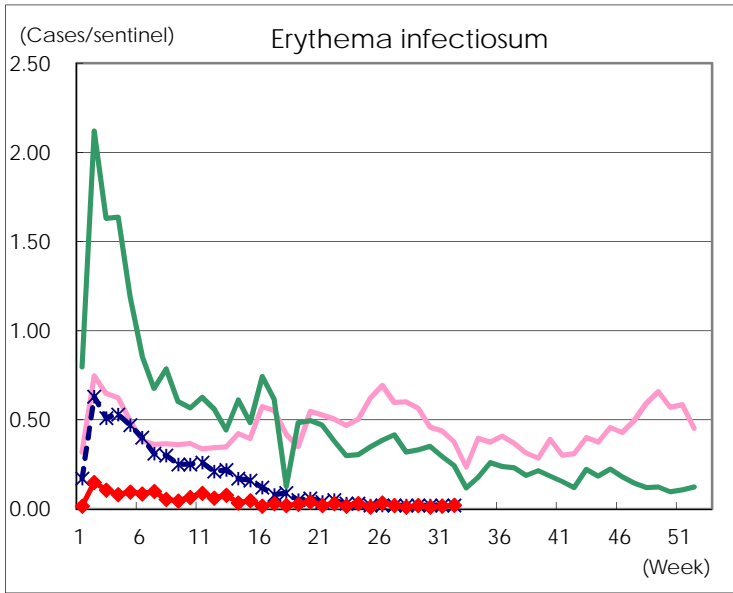
Number of patients with the diseases to be reported  
by the designated clinics and hospitals

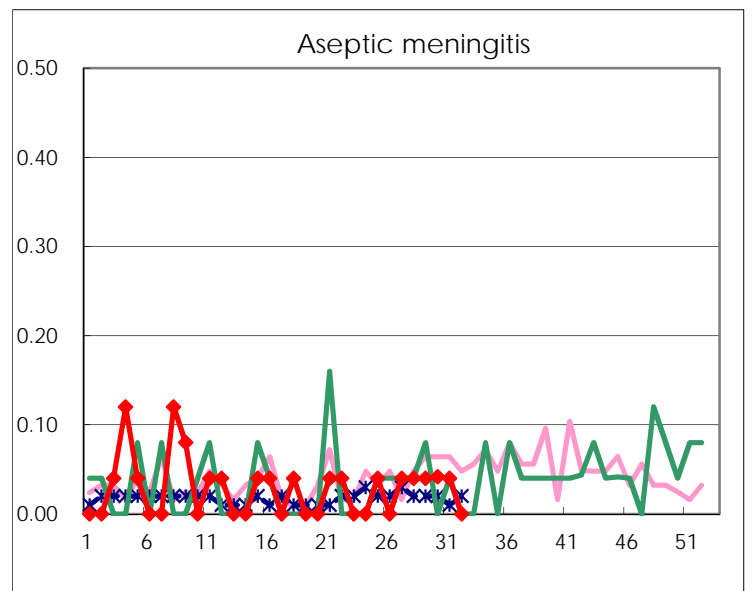
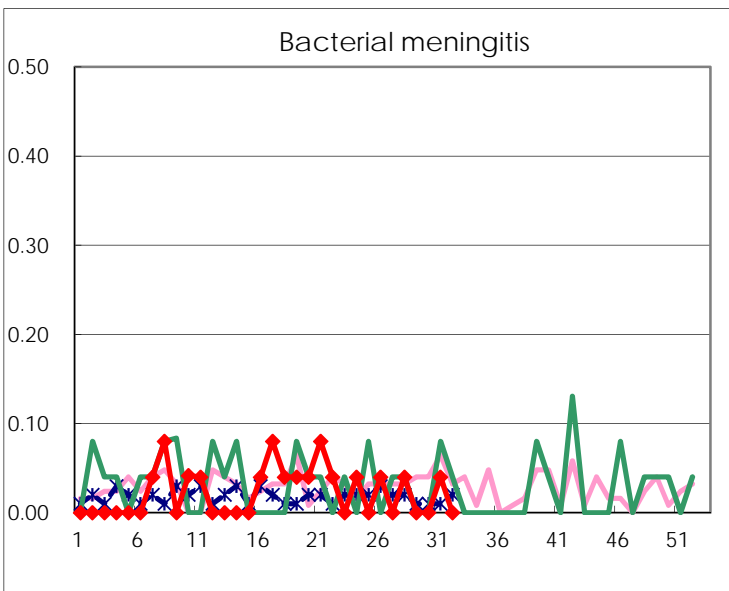
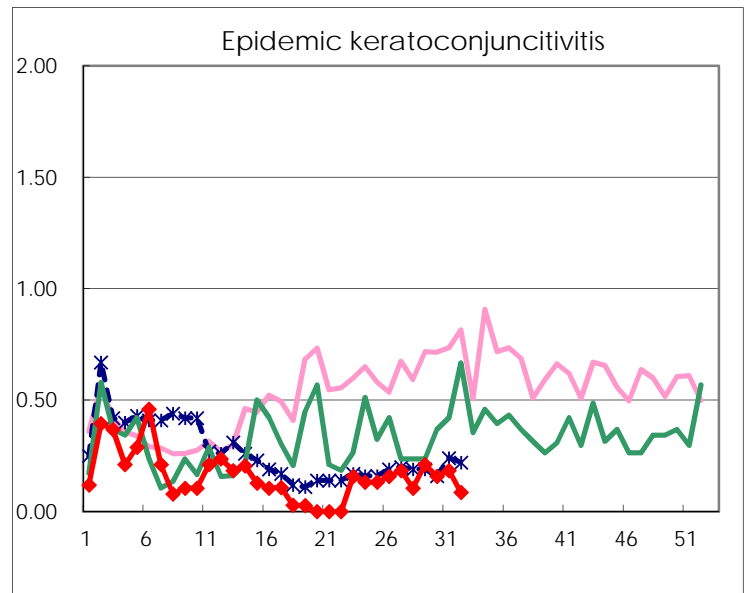
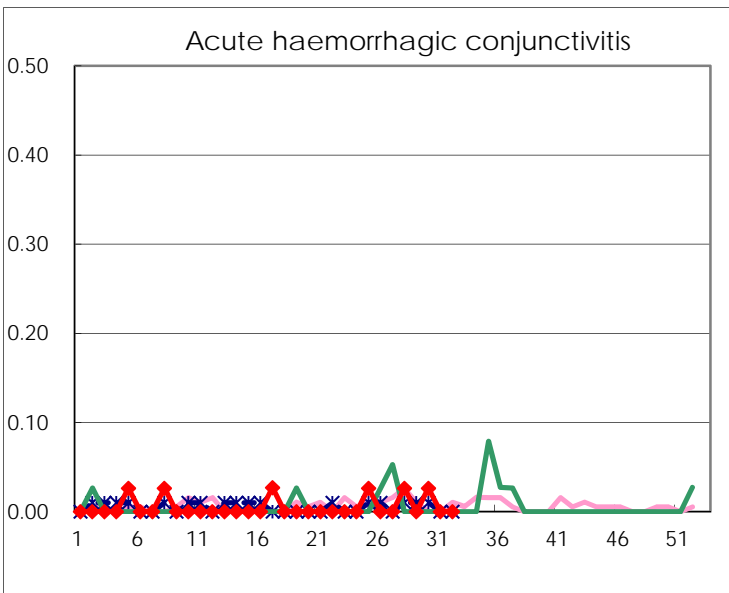
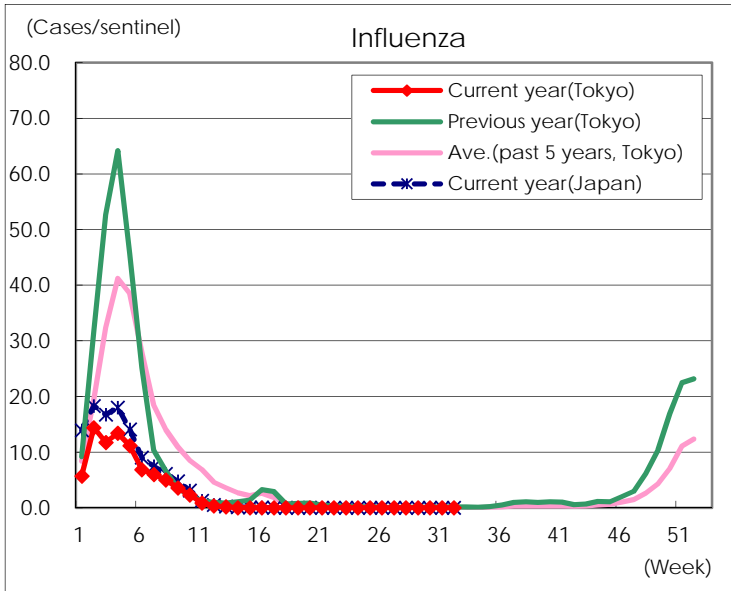
Diseases	Tokyo				
	29th	30th	31st	32nd	/sentinel
Respiratory syncytial virus infection	1		1	1	
Pharyngoconjunctival fever	19	20	11	18	0.08
Group A streptococcal pharyngitis	185	141	111	81	0.34
Infectious gastroenteritis	765	567	670	493	2.10
Chickenpox	17	24	27	27	0.11
Hand, foot, and mouth disease	33	19	35	21	0.09
Erythema infectiosum	5	3	4	5	0.02
Exanthem subitum	148	132	139	118	0.50
Herpangina	51	14	20	15	0.06
Mumps	21	10	7	16	0.07
Kawasaki disease	3		4		
Cold with exanths	4	14	8	7	0.03
Influenza					
Acute hemorrhagic conjunctivitis		1			
Epidemic keratoconjunctivitis	8	6	7	3	0.09
Bacterial meningitis			1		
Aseptic meningitis	1	1	1		
Mycoplasma pneumonia			1		
Chlamydial pneumonia (excluding psittacosis)			1		
Infectious gastroenteritis (only by Rotavirus)					
Influenza-Associated Hospitalizations					

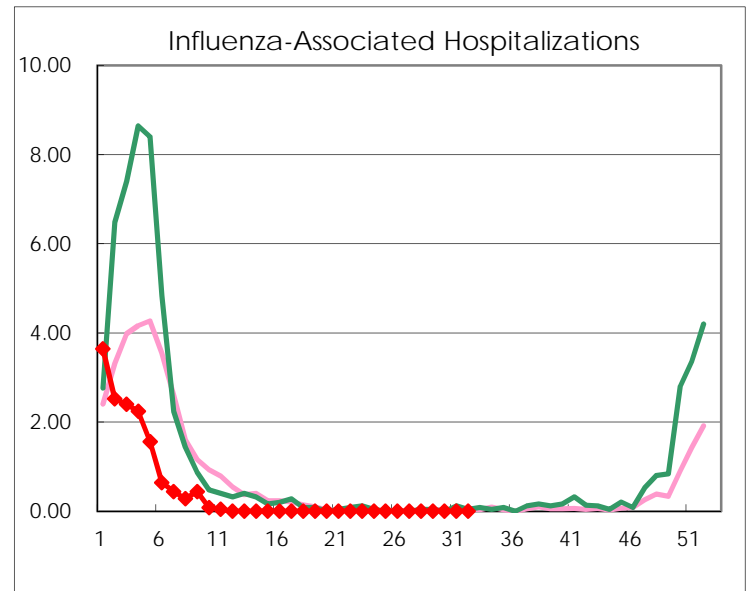
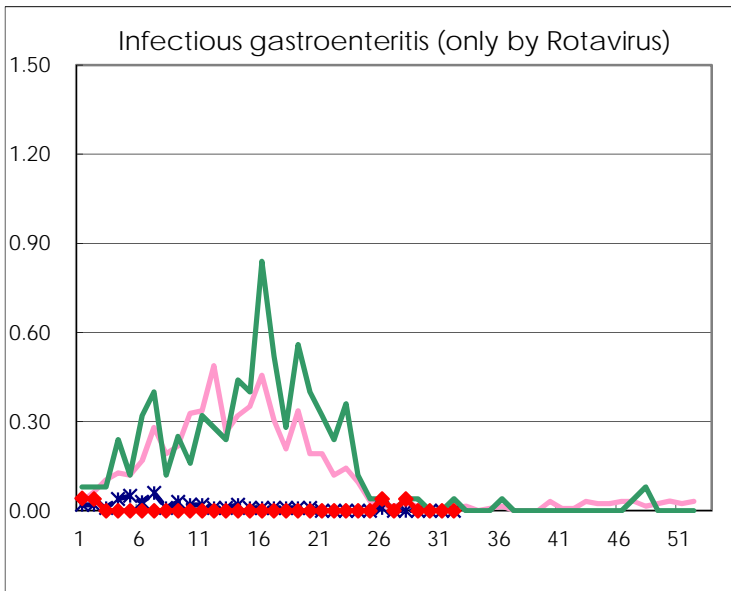
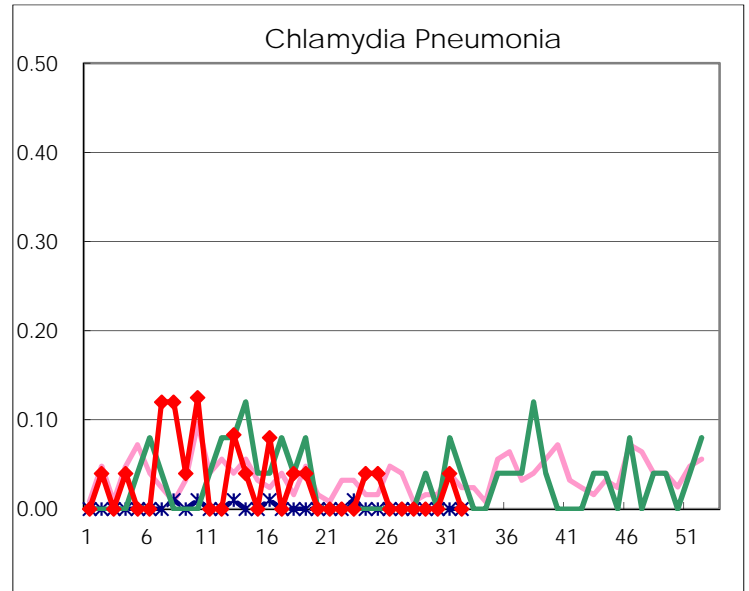
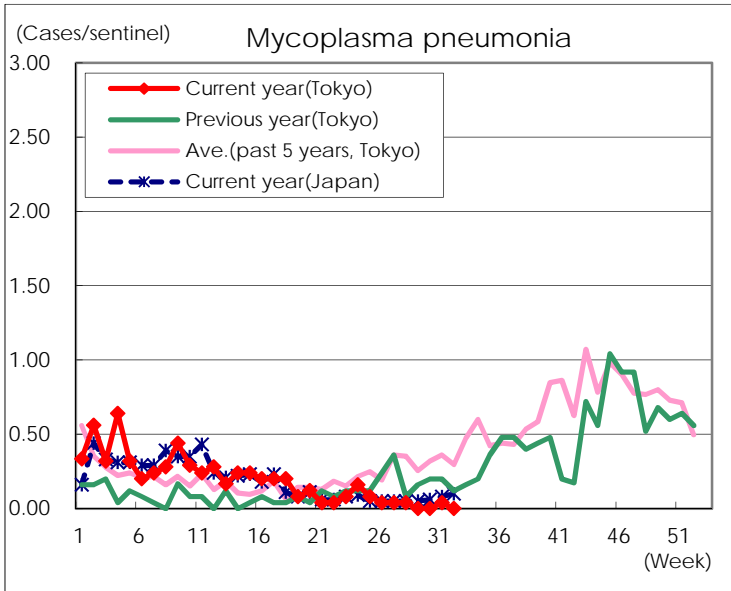
( Blank means 0. )

# Disease Trend Graph (weekly reported cases per sentinel in comparison)









Number of sentinel facilities for weekly reporting		
Types of sentinels	Number of sentinels	Sentinels having reported
Pediatric	264	235
Influenza	419	363
Ophthalmic	39	35
Specially-designated	25	23