

**20 August 2020 / Number 33**

**( 8/10 ~ 8/16 )**

### Surveillance System in Tokyo, Japan

The infectious diseases which all physicians must report

All physicians must report to health centers the incidence of the diseases which are shown at page one. Health centers electronically report the individual cases to Tokyo Metropolitan Infectious Disease Surveillance Center.

The infectious diseases required to be reported by the sentinels

The numbers of patients who visit the sentinel clinics or hospitals during a week are reported to health centers in Tokyo. And they electronically report the numbers to Tokyo Metropolitan Infectious Disease Surveillance Center. We have about 500 sentinel clinics and hospitals in Tokyo.

Tokyo Metropolitan Institute of Public Health

TEL:81-3-3363-3213 FAX:81-3-5332-7365

e-mail:[www@tokyo-eiken.go.jp](mailto:www@tokyo-eiken.go.jp)

URL:[idsc.tokyo-eiken.go.jp/](http://idsc.tokyo-eiken.go.jp/)

---

Number of patients with the diseases which all physicians must report

Category	Diseases	Tokyo					Japan	
		30th	31st	32nd	33rd	Cum 2020	33rd	Cum 2020
I	Ebola hemorrhagic fever							
	Crimean-Congo hemorrhagic fever							
	Smallpox							
	South American hemorrhagic fever							
	Plague							
	Marburg disease							
	Lassa fever							
II	Acute poliomyelitis							
	Tuberculosis	27	51	54	35	1,543	219	10,625
	Diphtheria							
	Severe Acute Respiratory Syndrome(SARS)							
	Middle East Respiratory Syndrome (MERS)							
	Avian influenza H5N1							
	Avian influenza H7N9							
※	Novel Coronavirus 2019 infection	1,745	2,467					
III	Cholera							1
	Shigellosis		1			11		55
	Enterohemorrhagic Escherichia coli infection	12	11	8	7	140	74	1,402
	Typhoid fever		1			2		19
	Paratyphoid fever					1		7
IV	Hepatitis E	1	1	2	2	83	8	291
	West Nile fever							
	Hepatitis A					20	4	94
	Echinococcosis							10
	Yellow fever							
	Psittacosis							4
	Omsk hemorrhagic fever							
	Relapsing fever							8
	Kyasanur forest disease							
	Q fever							
	Rabies							1
	Coccidioidomycosis					1		3
	Monkeypox							
	Zika virus infection							1
	Severe Fever with Thrombocytopenia Syndrome						1	45
	Hemorrhagic fever with renal syndrome							
	Western equine encephalitis							
	Tick-borne encephalitis							
	Anthrax							
	Chikungunya fever							3
	Scrub typhus(Tsutsugamushi disease)			1		6	2	111
	Dengue fever					12		41
	Eastern equine encephalitis							
	Avian influenza (excluding H5N1 and H7N9)							
	Nipah virus infection							
	Japanese spotted fever						4	157
	Japanese encephalitis							1
	Hantavirus pulmonary syndrome							
	Herpes B virus infection							
	Glanders							
	Brucellosis							1
	Venezuelan equine encephalitis							
	Hendra virus infection							
Epidemic typhus								
Botulism	1				1		3	
Malaria					5		15	
Tularemia								
Lyme disease					1		17	
Lyssavirus infection(excluding rabies)								
Rift valley fever								
Melioidosis								
Legionellosis	8	5	10	2	81	54	1,223	
Leptospirosis				1	1	2	3	
	Rocky mountain spotted fever							

Category	Diseases	Tokyo					Japan	
		30th	31st	32nd	33rd	Cum 2020	33rd	Cum 2020
V	Amebiasis	1	2		1	74	5	369
	Viral hepatitis(excluding hepatitis A and E)	2	1	1	1	39	1	155
	CRE infection	5	2	3	3	79	26	1,035
	Acute Flaccid Paralysis (excluding Acute poliomyelitis)		1			2	1	22
	Acute encephalitis(excluding JE and WNE)	1	1	1		24	2	364
	Cryptosporidiosis							4
	Creutzfeldt-Jakob disease		2			11	3	95
	Severe invasive streptococcal infections(TSLS)		1	5	2	65	6	492
	Acquired immunodeficiency syndrome (AIDS)	10	5	10	8	232	7	644
	Giardiasis					4		15
	Invasive <i>Haemophilus influenzae</i> disease			1		20		184
	Invasive meningococcal disease				1	2	1	12
	Invasive pneumococcal disease	1	2	1	3	111	9	1,129
	Varicella (limited to hospitalized case)	2		1		31	5	228
	Congenital rubella syndrome							1
	Syphilis	25	36	28	19	956	45	3,547
	Disseminated cryptococcosis					10	1	89
	Tetanus					4		63
	Vancomycin-resistant <i>S. aureus</i> infection							
	Vancomycin-resistant Enterococcus infection					6		76
Pertussis	1	1		1	231	4	2,632	
Rubella					21		85	
Measles					2	1	13	
MDRA infection						1	9	

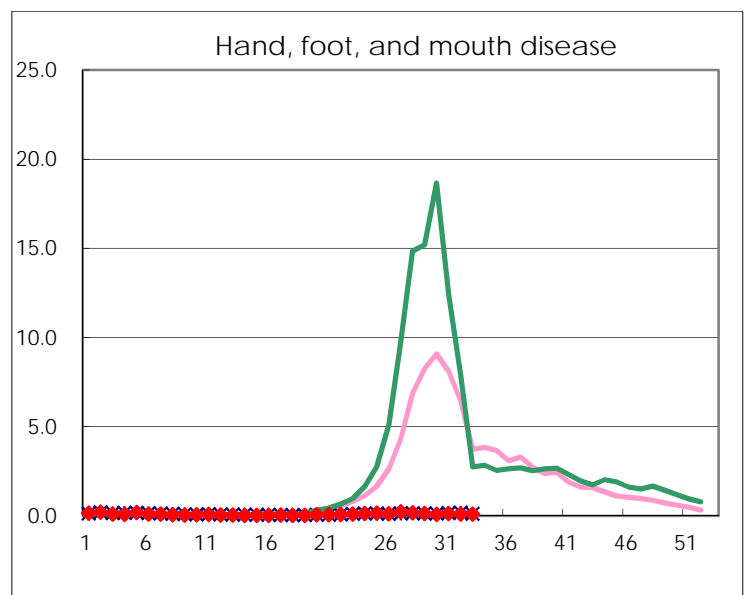
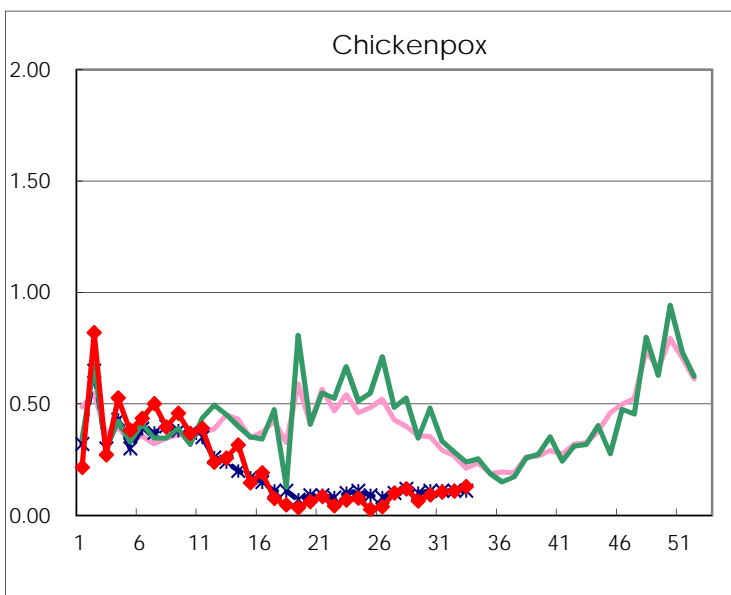
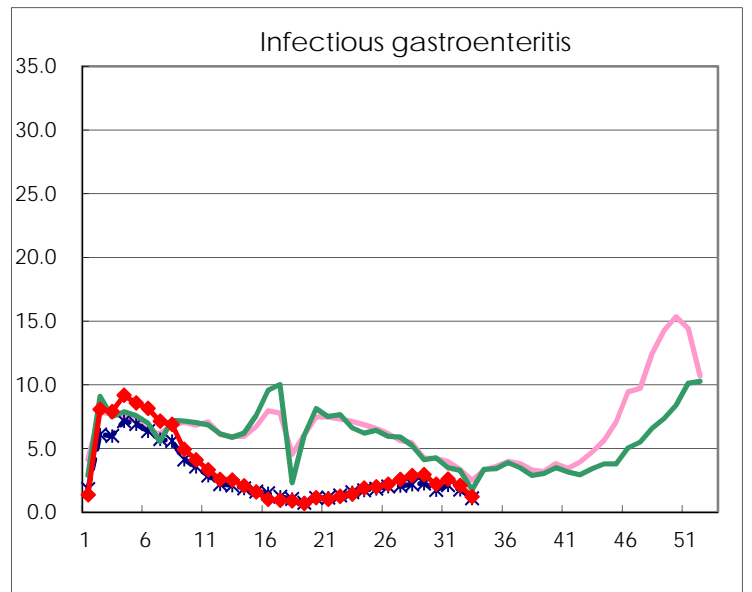
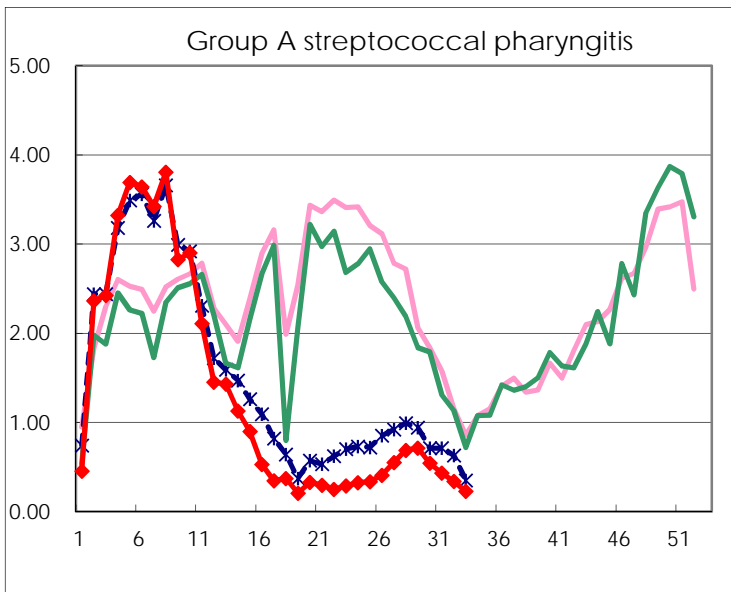
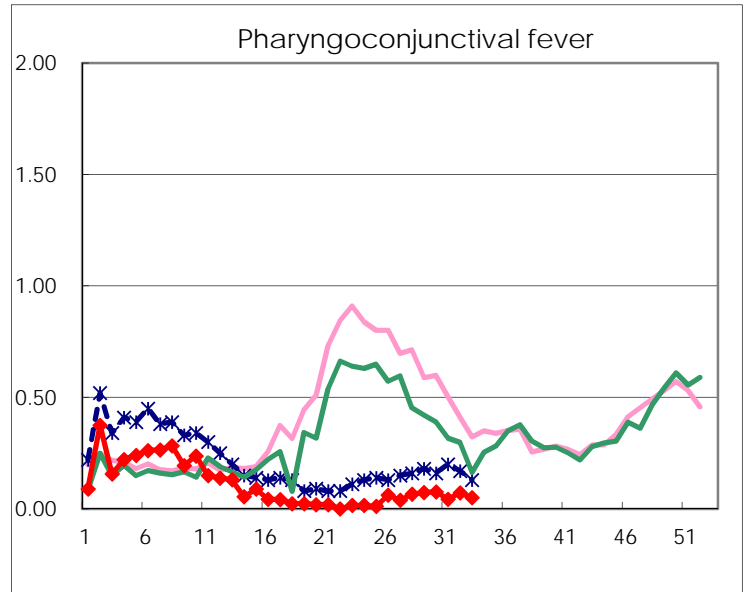
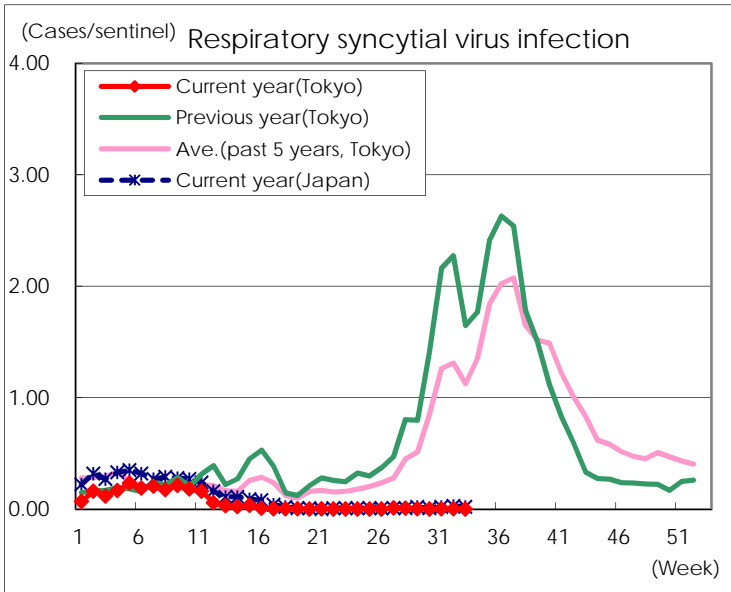
※ Designated infectious disease

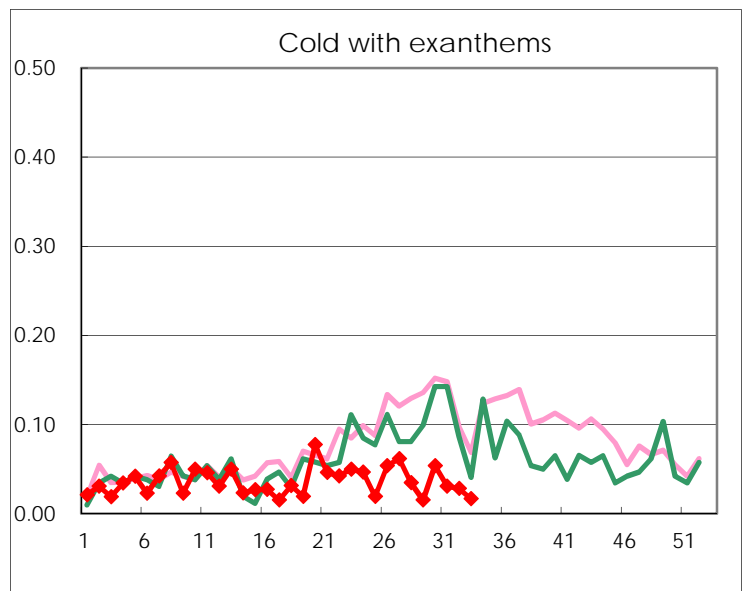
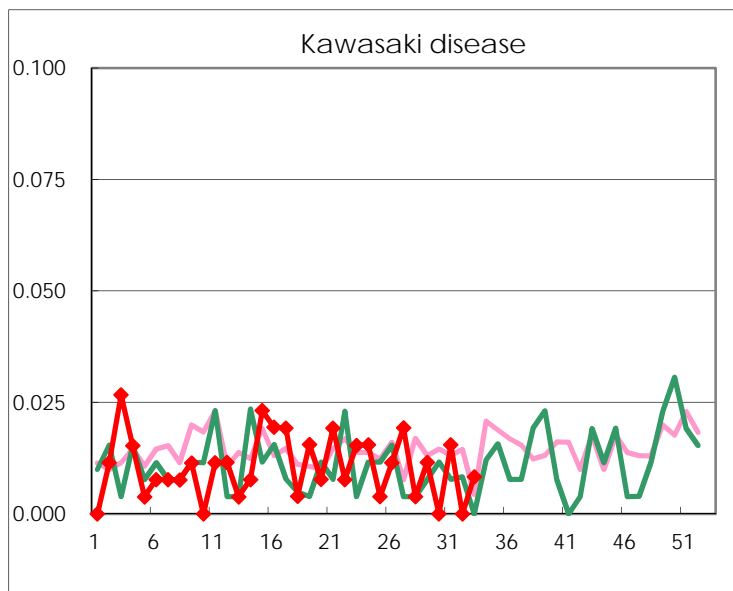
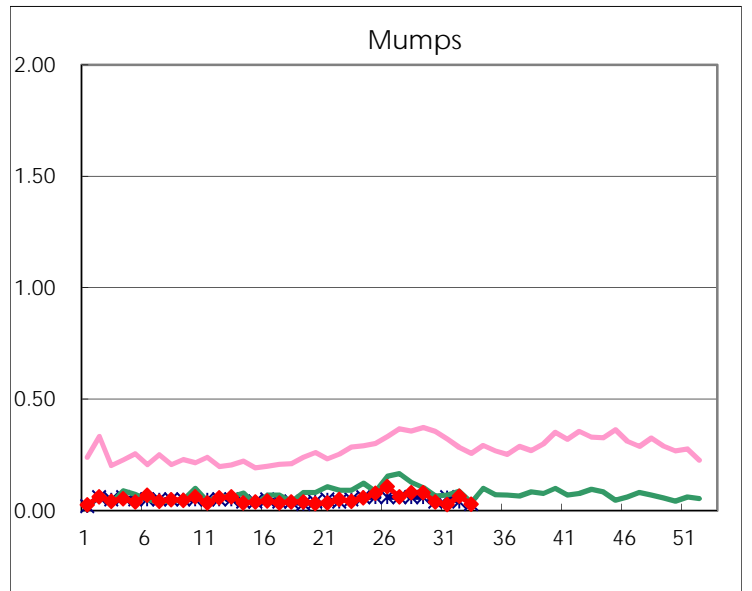
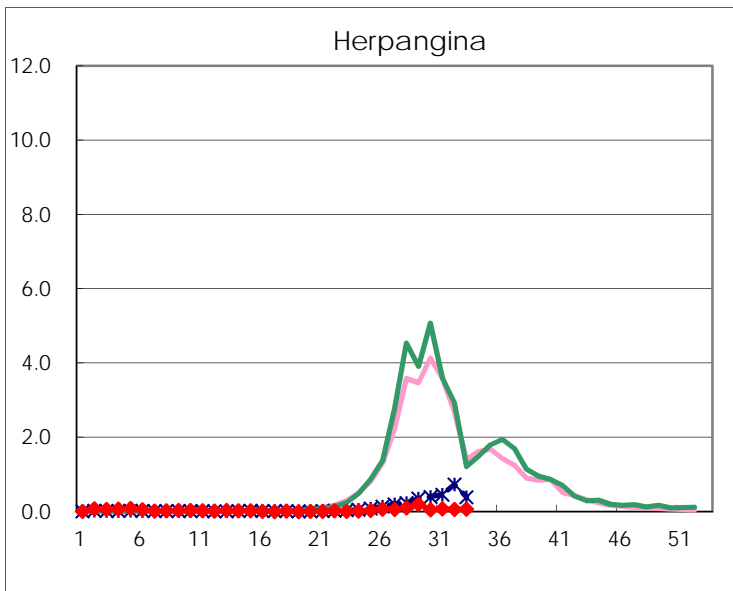
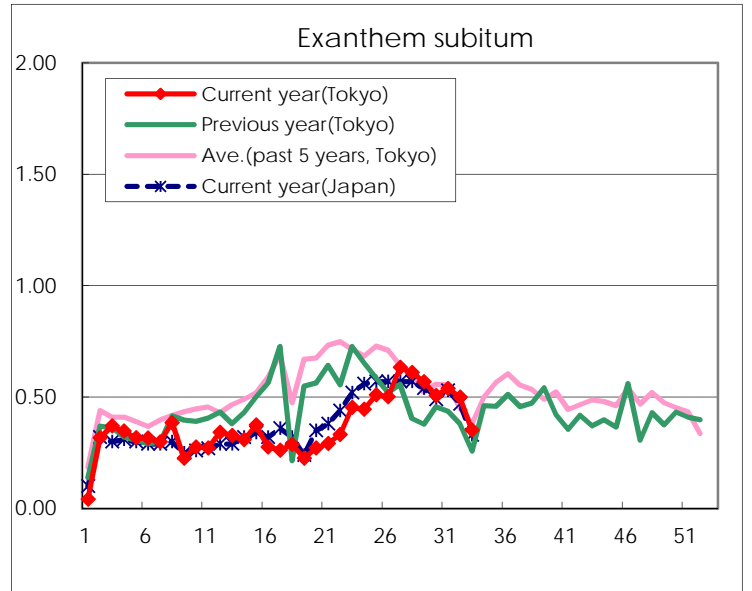
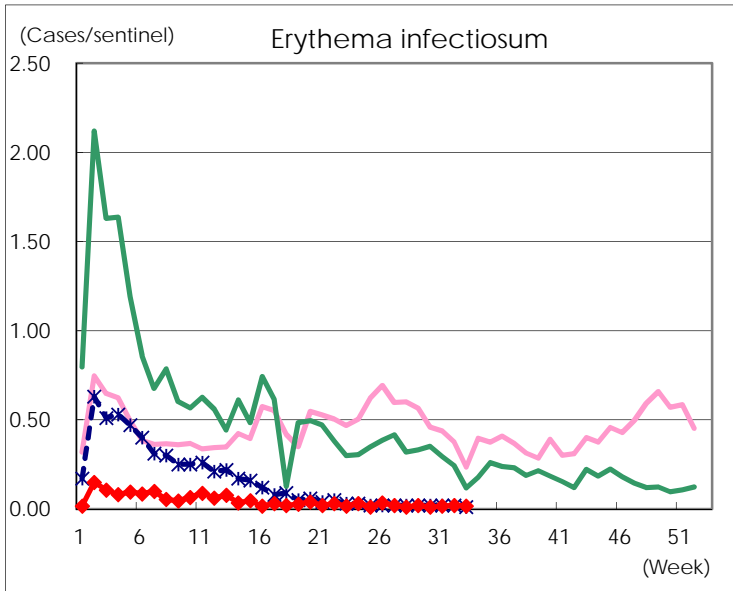
Number of patients with the diseases to be reported  
by the designated clinics and hospitals

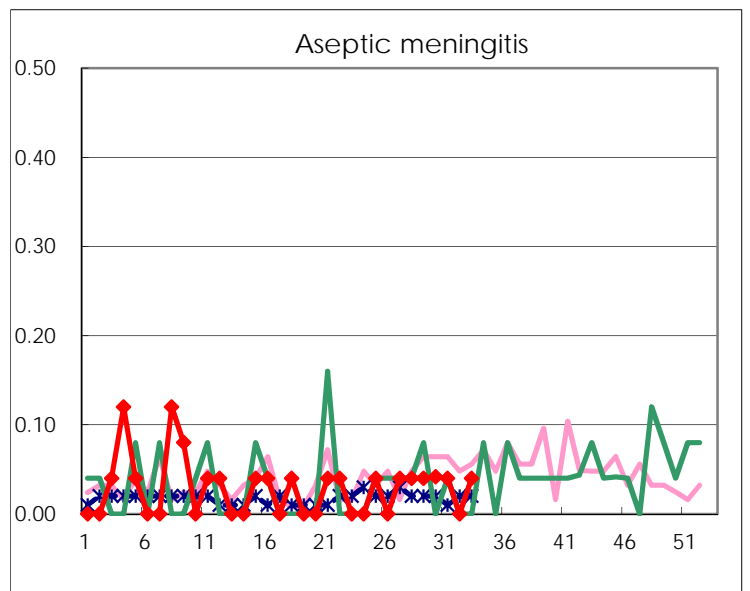
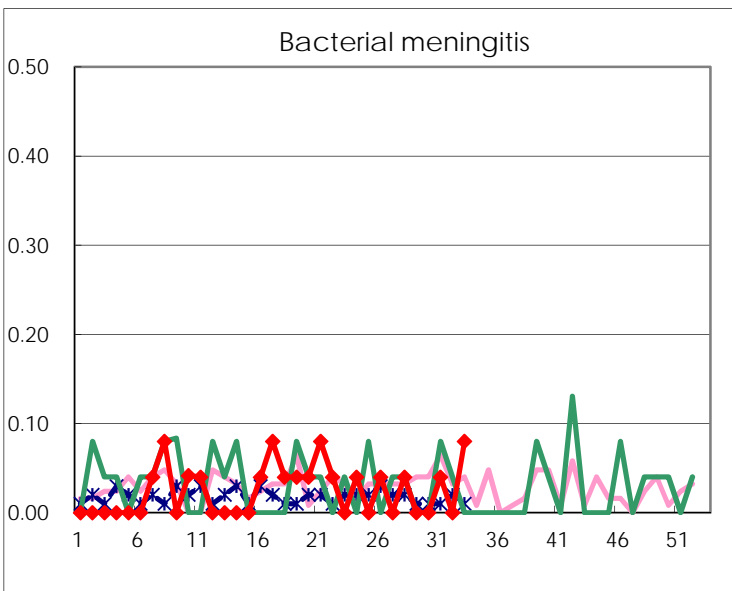
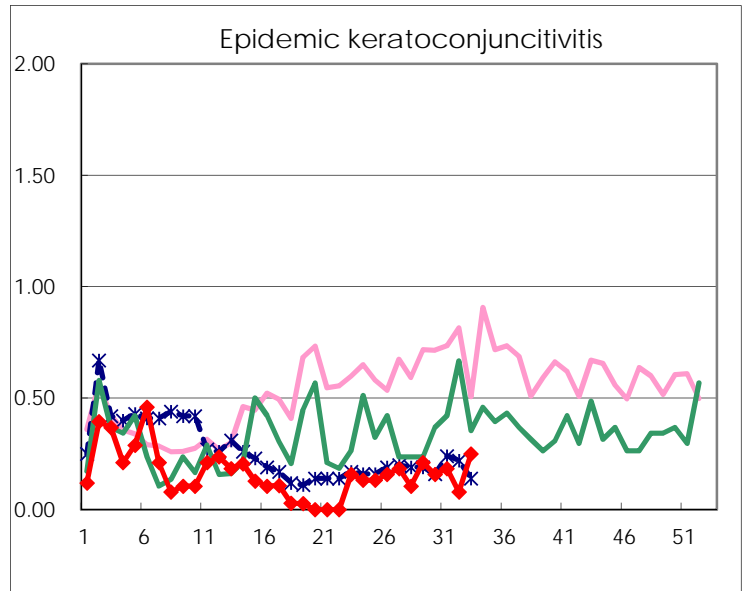
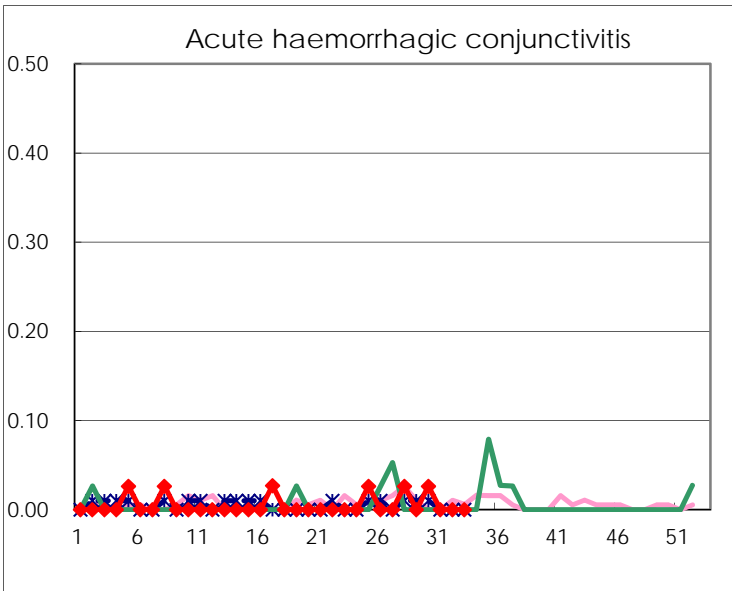
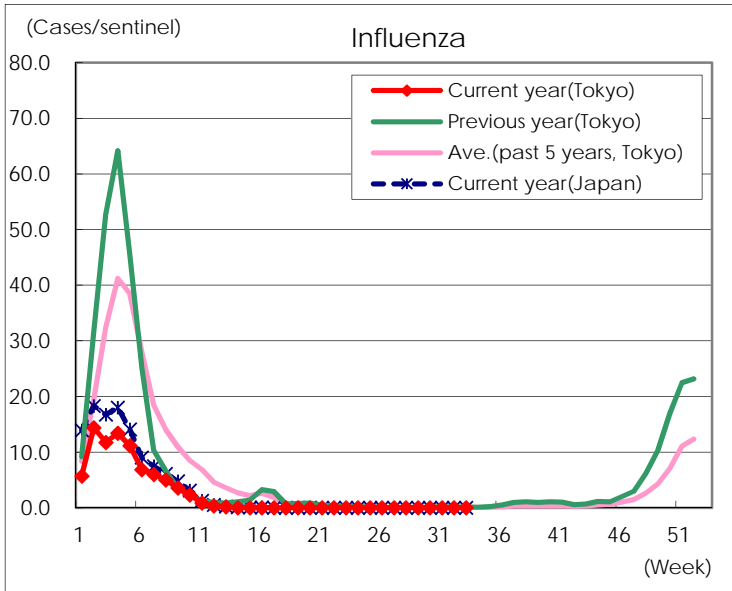
Diseases	Tokyo				
	30th	31st	32nd	33rd	/sentinel
Respiratory syncytial virus infection		1	1		
Pharyngoconjunctival fever	20	11	18	12	0.05
Group A streptococcal pharyngitis	141	111	84	54	0.23
Infectious gastroenteritis	567	670	519	287	1.20
Chickenpox	24	27	27	31	0.13
Hand, foot, and mouth disease	19	35	21	21	0.09
Erythema infectiosum	3	4	5	4	0.02
Exanthem subitum	132	139	124	84	0.35
Herpangina	14	20	16	16	0.07
Mumps	10	7	16	7	0.03
Kawasaki disease		4		2	0.01
Cold with exanthsms	14	8	7	4	0.02
Influenza				1	
Acute hemorrhagic conjunctivitis	1				
Epidemic keratoconjunctivitis	6	7	3	9	0.25
Bacterial meningitis		1		2	0.08
Aseptic meningitis	1	1		1	0.04
Mycoplasma pneumonia		1	1		
Chlamydial pneumonia (excluding psittacosis)		1		2	0.08
Infectious gastroenteritis (only by Rotavirus)					
Influenza-Associated Hospitalizations					

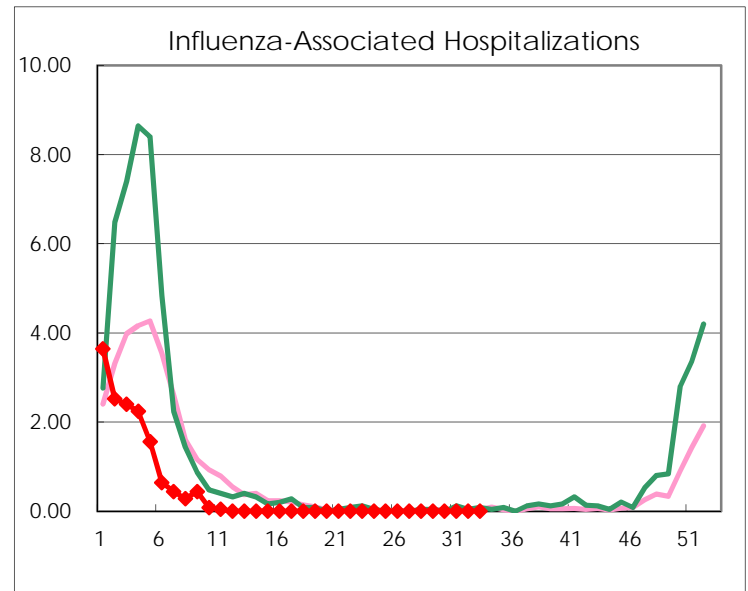
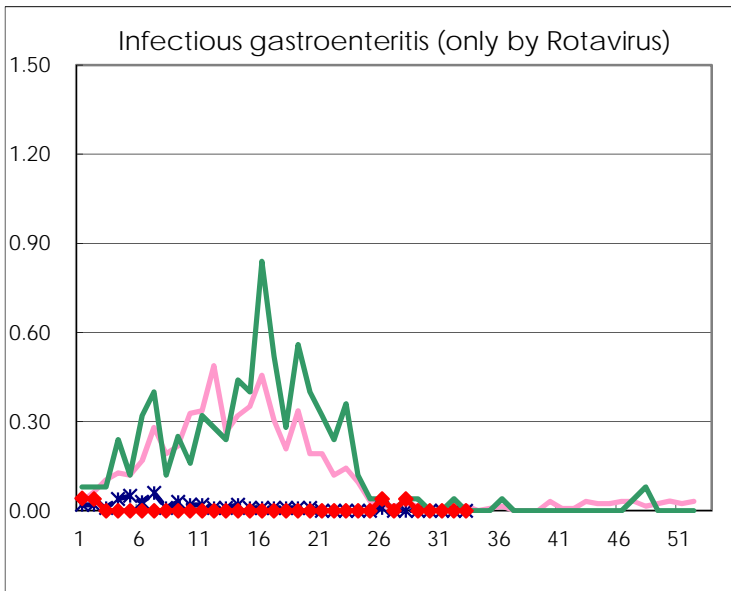
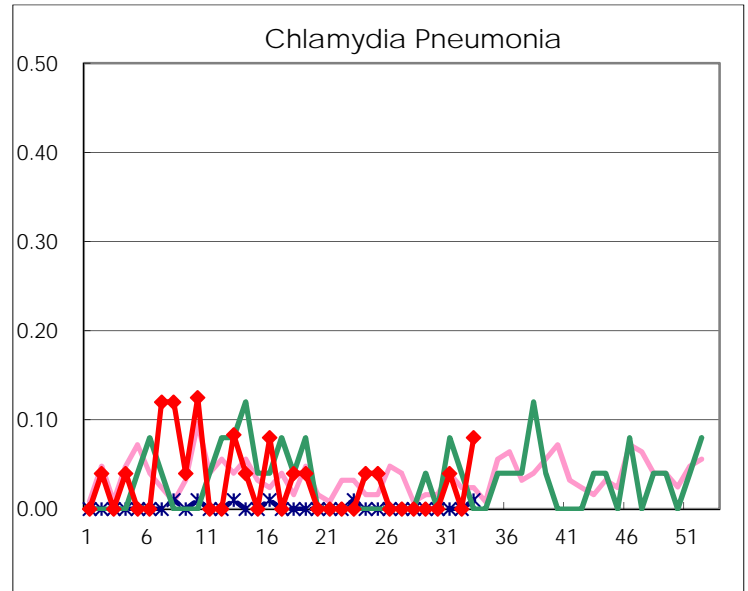
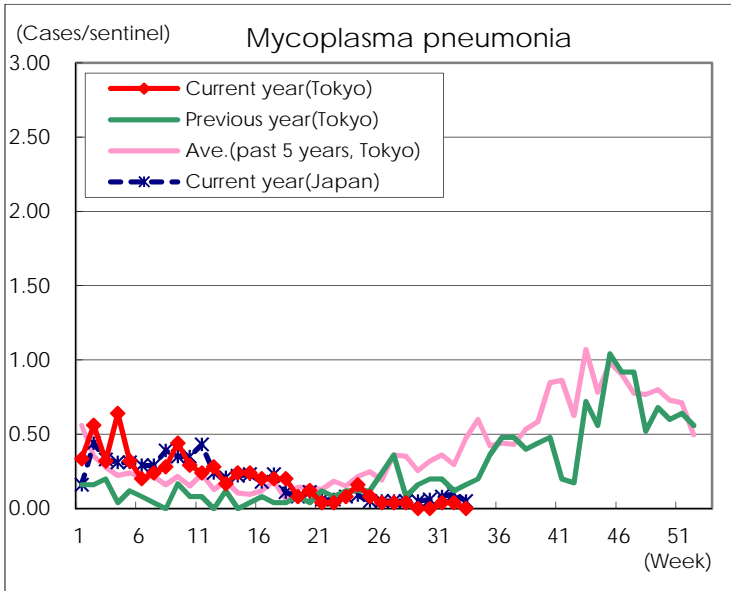
( Blank means 0. )

# Disease Trend Graph (weekly reported cases per sentinel in comparison)









Number of sentinel facilities for weekly reporting		
Types of sentinels	Number of sentinels	Sentinels having reported
Pediatric	264	239
Influenza	419	374
Ophthalmic	39	36
Specially-designated	25	25