

27 August 2020 / Number 34

(8/17 ~ 8/23)

Surveillance System in Tokyo, Japan

The infectious diseases which all physicians must report

All physicians must report to health centers the incidence of the diseases which are shown at page one. Health centers electronically report the individual cases to Tokyo Metropolitan Infectious Disease Surveillance Center.

The infectious diseases required to be reported by the sentinels

The numbers of patients who visit the sentinel clinics or hospitals during a week are reported to health centers in Tokyo. And they electronically report the numbers to Tokyo Metropolitan Infectious Disease Surveillance Center. We have about 500 sentinel clinics and hospitals in Tokyo.

Tokyo Metropolitan Institute of Public Health

TEL:81-3-3363-3213 FAX:81-3-5332-7365

e-mail:www@tokyo-eiken.go.jp

URL:idsc.tokyo-eiken.go.jp/

Number of patients with the diseases which all physicians must report

Category	Diseases	Tokyo					Japan	
		31st	32nd	33rd	34th	Cum 2020	34th	Cum 2020
I	Ebola hemorrhagic fever							
	Crimean-Congo hemorrhagic fever							
	Smallpox							
	South American hemorrhagic fever							
	Plague							
	Marburg disease							
	Lassa fever							
II	Acute poliomyelitis							
	Tuberculosis	53	58	37	36	1,562	269	11,044
	Diphtheria							
	Severe Acute Respiratory Syndrome(SARS)							
	Middle East Respiratory Syndrome (MERS)							
	Avian influenza H5N1							
	Avian influenza H7N9							
※	Novel Coronavirus 2019 infection	2,467						
III	Cholera							1
	Shigellosis	1				11		55
	Enterohemorrhagic Escherichia coli infection	12	8	7	11	152	114	1,544
	Typhoid fever	1				2		19
	Paratyphoid fever					1		7
IV	Hepatitis E	1	2	2		83	2	293
	West Nile fever							
	Hepatitis A					20		95
	Echinococcosis							10
	Yellow fever							
	Psittacosis							4
	Omsk hemorrhagic fever							
	Relapsing fever							9
	Kyasanur forest disease							
	Q fever							
	Rabies							1
	Coccidioidomycosis					1		3
	Monkeypox							
	Zika virus infection							1
	Severe Fever with Thrombocytopenia Syndrome						2	47
	Hemorrhagic fever with renal syndrome							
	Western equine encephalitis							
	Tick-borne encephalitis							
	Anthrax							
	Chikungunya fever							
	Scrub typhus(Tsutsugamushi disease)		1			6		110
	Dengue fever					12		41
	Eastern equine encephalitis							
	Avian influenza (excluding H5N1 and H7N9)							
	Nipah virus infection							
	Japanese spotted fever						14	177
	Japanese encephalitis							2
	Hantavirus pulmonary syndrome							
	Herpes B virus infection							
	Glanders							
	Brucellosis							1
	Venezuelan equine encephalitis							
	Hendra virus infection							
Epidemic typhus								
Botulism					1		3	
Malaria					5	1	16	
Tularemia								
Lyme disease					1		18	
Lyssavirus infection(excluding rabies)								
Rift valley fever								
Melioidosis								
Legionellosis	5	10	3	4	86	34	1,268	
Leptospirosis			1		1		3	
Rocky mountain spotted fever								

Category	Diseases	Tokyo					Japan	
		31st	32nd	33rd	34th	Cum 2020	34th	Cum 2020
V	Amebiasis	2		1	1	75	10	384
	Viral hepatitis(excluding hepatitis A and E)	1	1	1	2	41	3	163
	CRE infection	2	4	4	9	90	37	1,098
	Acute Flaccid Paralysis (excluding Acute poliomyelitis)	1				2	1	23
	Acute encephalitis(excluding JE and WNE)	1	1			24	2	369
	Cryptosporidiosis							4
	Creutzfeldt-Jakob disease	2				11	1	97
	Severe invasive streptococcal infections(TSLS)	1	5	2	4	69	13	511
	Acquired immunodeficiency syndrome (AIDS)	5	10	8	7	239	14	666
	Giardiasis					4	1	16
	Invasive <i>Haemophilus influenzae</i> disease		1			20	3	188
	Invasive meningococcal disease			1		2		12
	Invasive pneumococcal disease	2	1	3	2	113	10	1,147
	Varicella (limited to hospitalized case)		1	1		32	5	238
	Congenital rubella syndrome							1
	Syphilis	36	29	25	21	985	56	3,652
	Disseminated cryptococcosis				2	12	3	95
	Tetanus				1	5	2	65
	Vancomycin-resistant <i>S. aureus</i> infection							
	Vancomycin-resistant Enterococcus infection					6	4	83
Pertussis	1		1		231	10	2,645	
Rubella					21	2	87	
Measles					2		12	
MDRA infection							9	

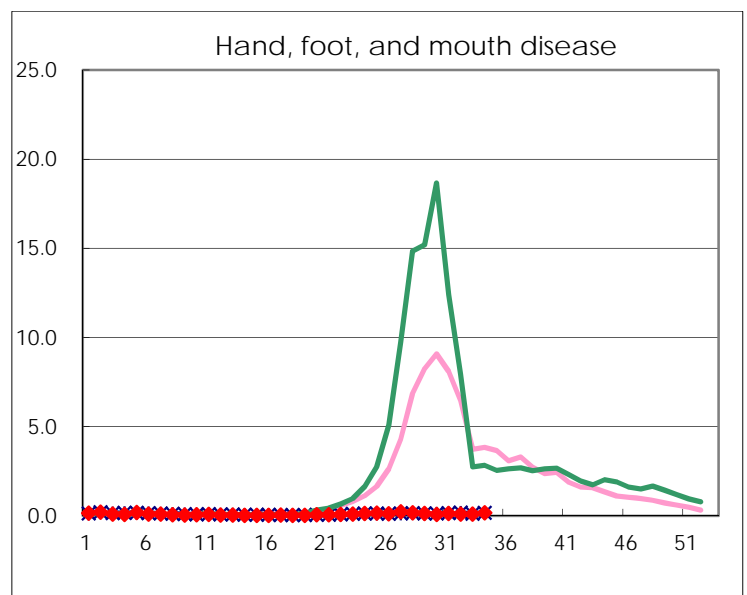
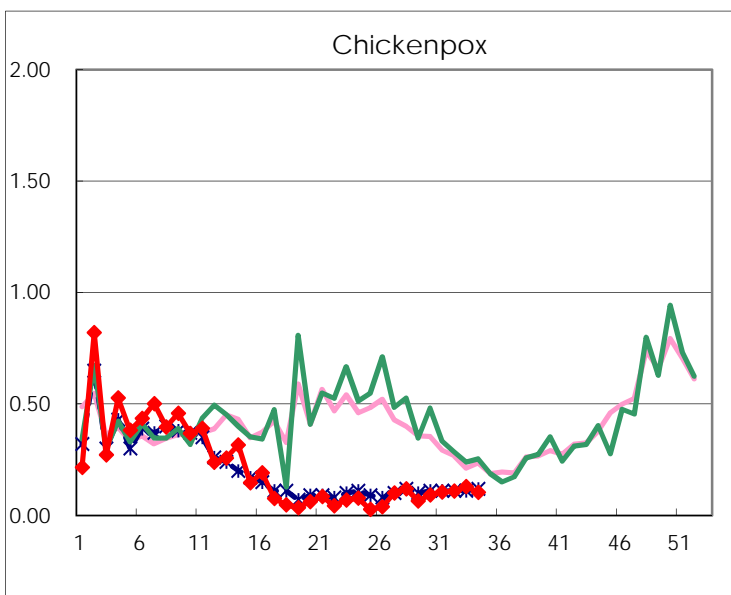
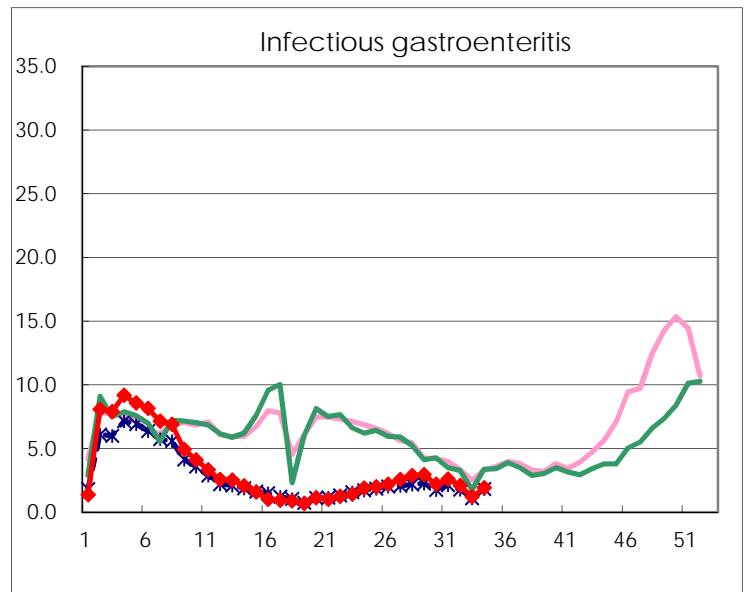
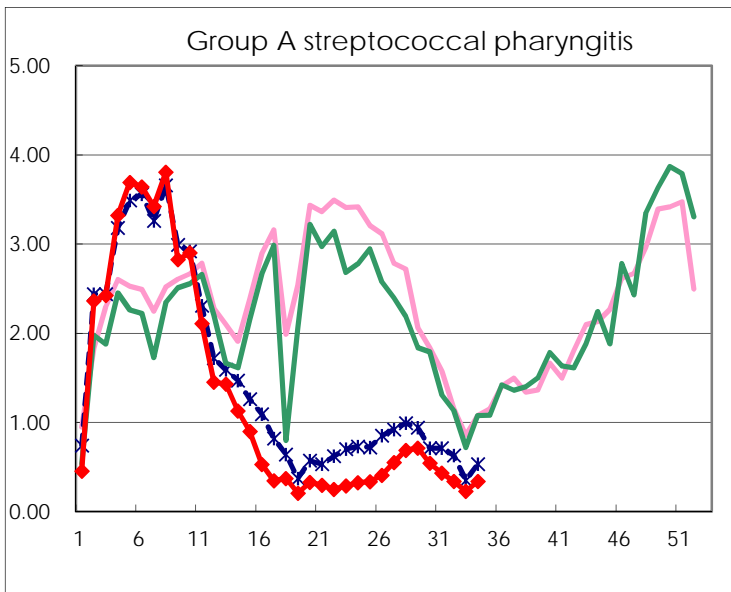
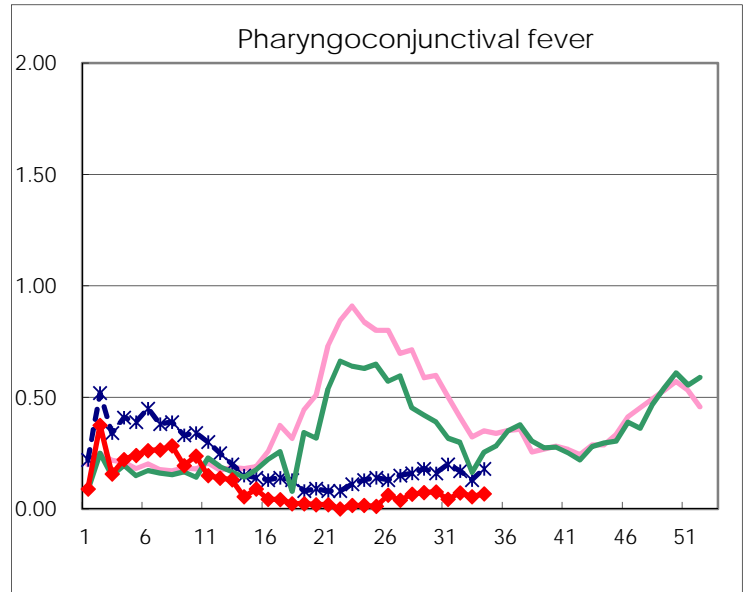
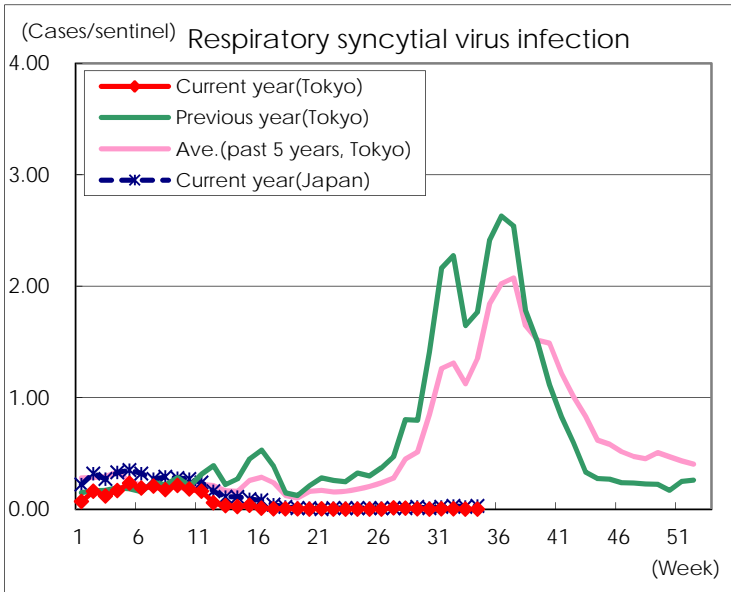
※ Designated infectious disease

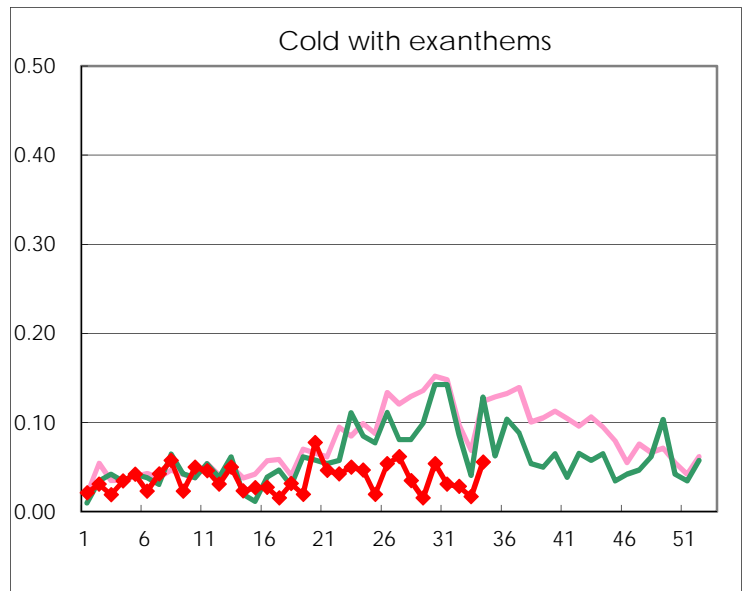
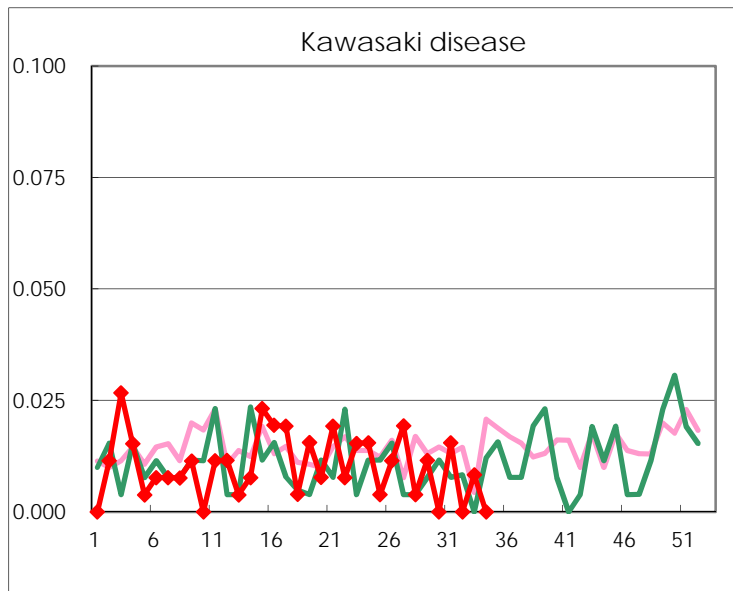
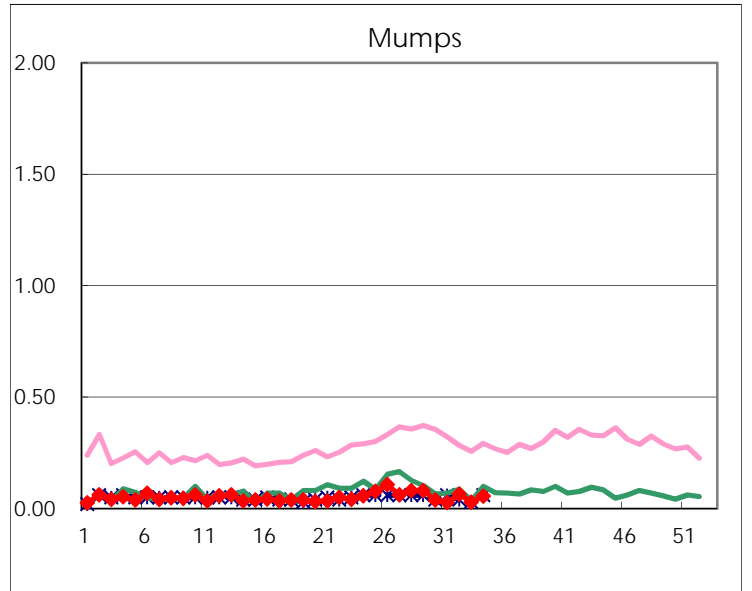
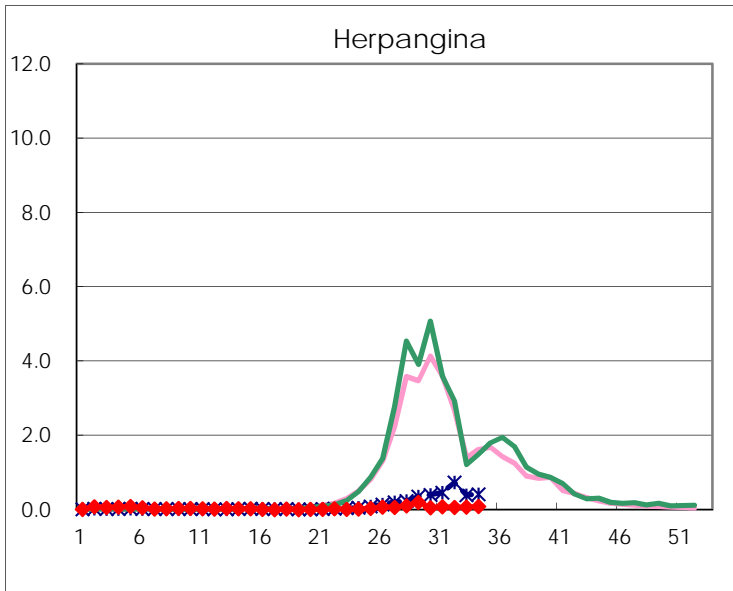
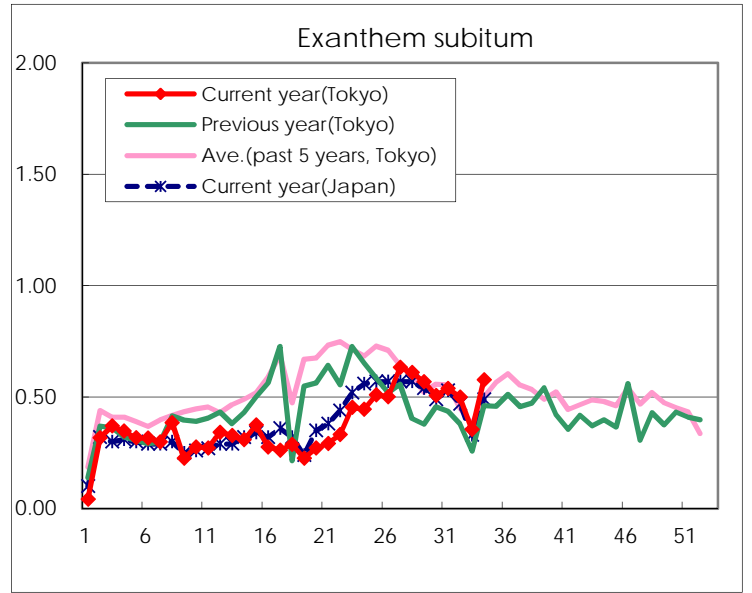
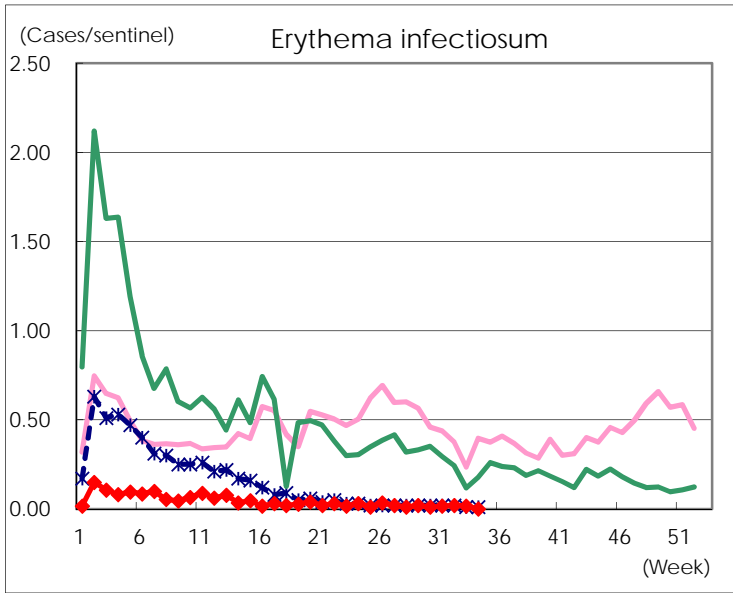
Number of patients with the diseases to be reported
by the designated clinics and hospitals

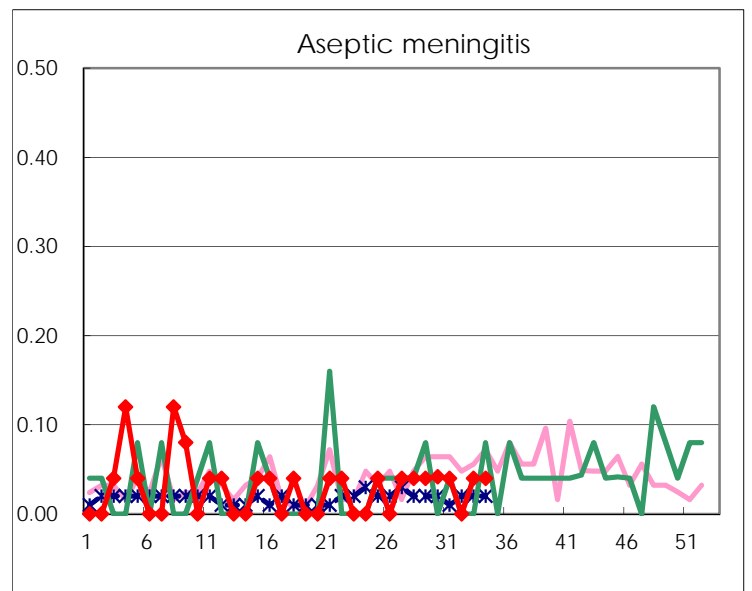
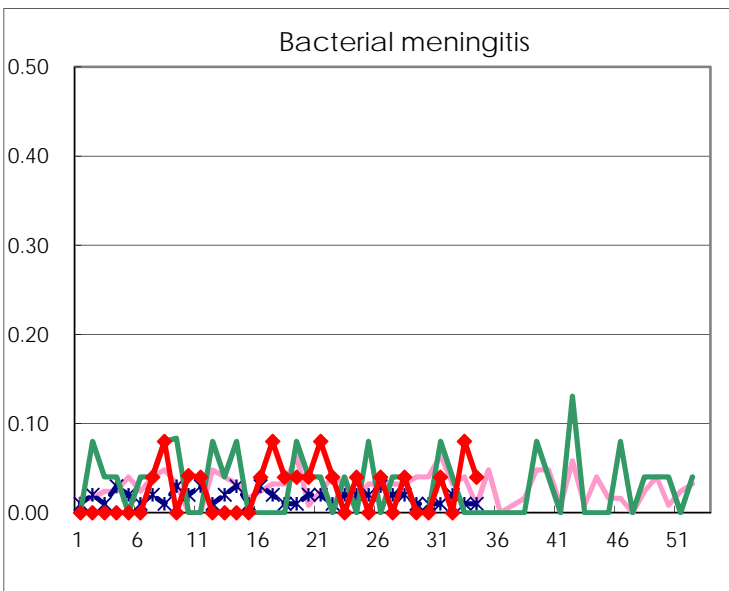
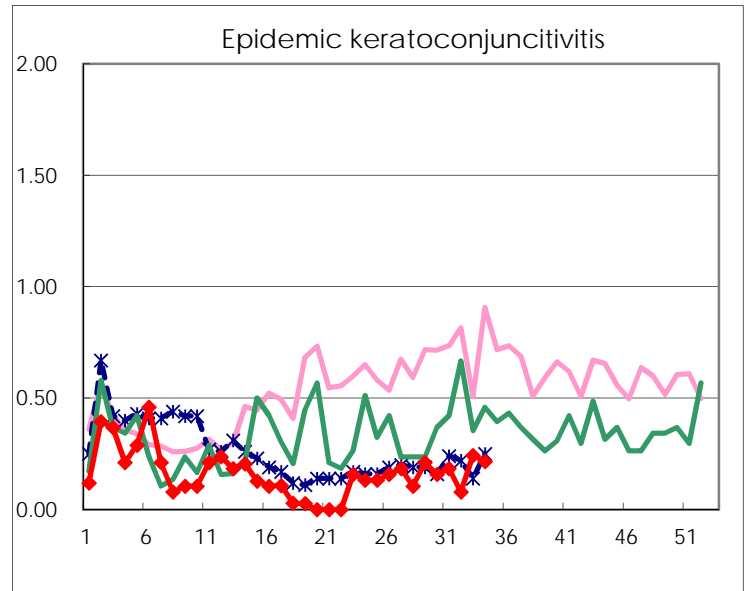
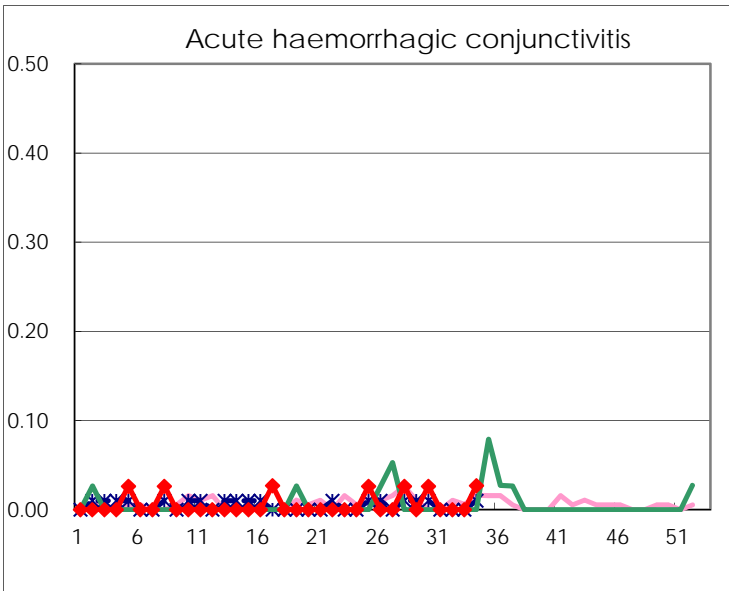
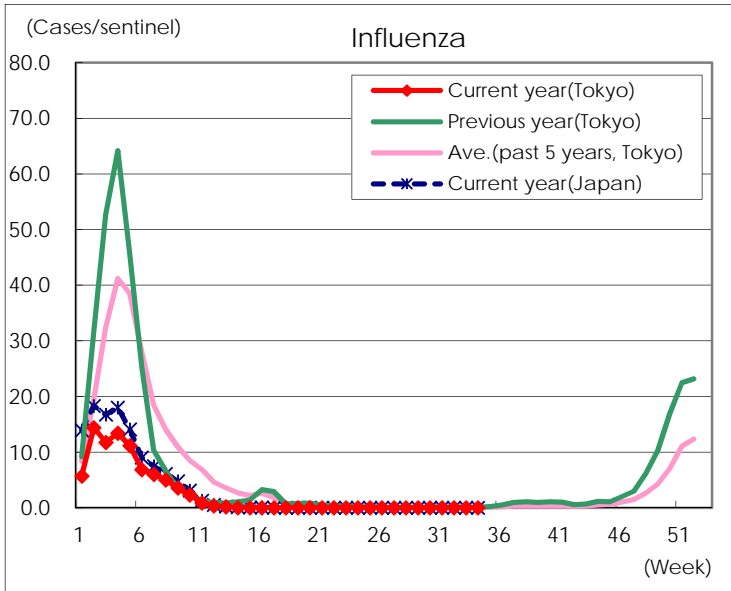
Diseases	Tokyo				
	31st	32nd	33rd	34th	/sentinel
Respiratory syncytial virus infection	1	1			
Pharyngoconjunctival fever	11	18	13	17	0.07
Group A streptococcal pharyngitis	111	84	54	85	0.34
Infectious gastroenteritis	670	519	287	479	1.91
Chickenpox	27	27	31	26	0.10
Hand, foot, and mouth disease	35	21	21	41	0.16
Erythema infectiosum	4	5	4		
Exanthem subitum	139	124	85	145	0.58
Herpangina	20	16	16	21	0.08
Mumps	7	16	7	14	0.06
Kawasaki disease	4		2		
Cold with exanths	8	7	4	14	0.06
Influenza			1		
Acute hemorrhagic conjunctivitis				1	0.03
Epidemic keratoconjunctivitis	7	3	9	8	0.22
Bacterial meningitis	1		2	1	0.04
Aseptic meningitis	1		1	1	0.04
Mycoplasma pneumonia	1	1			
Chlamydial pneumonia (excluding psittacosis)	1		2		
Infectious gastroenteritis (only by Rotavirus)				1	0.04
Influenza-Associated Hospitalizations					

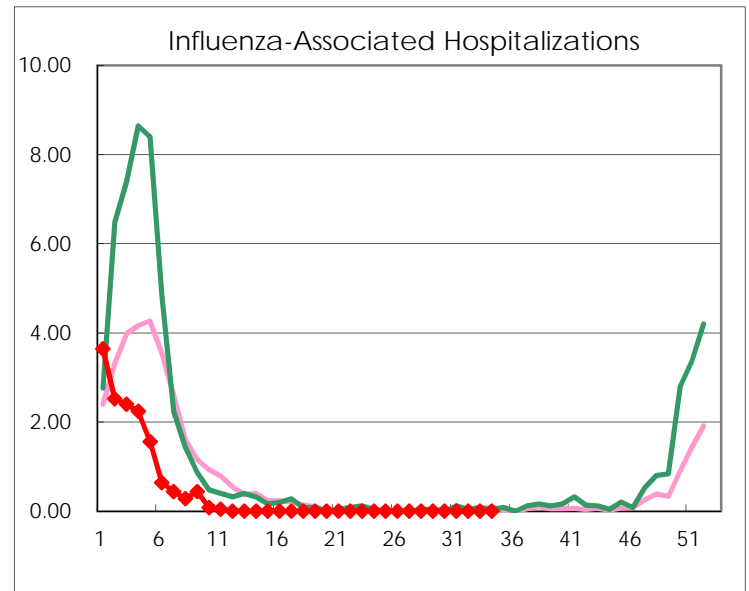
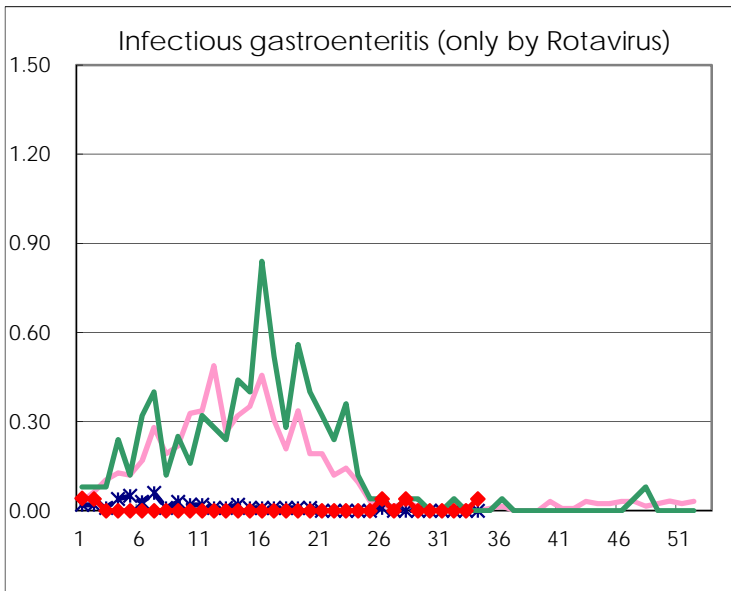
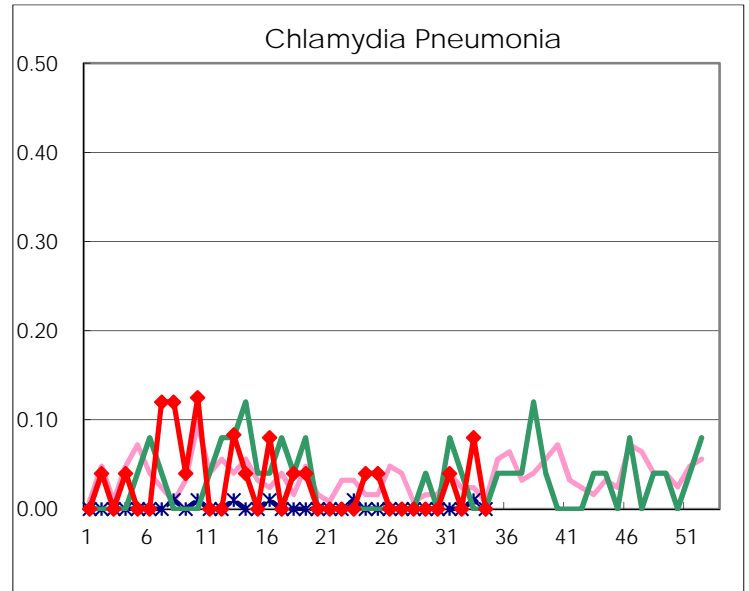
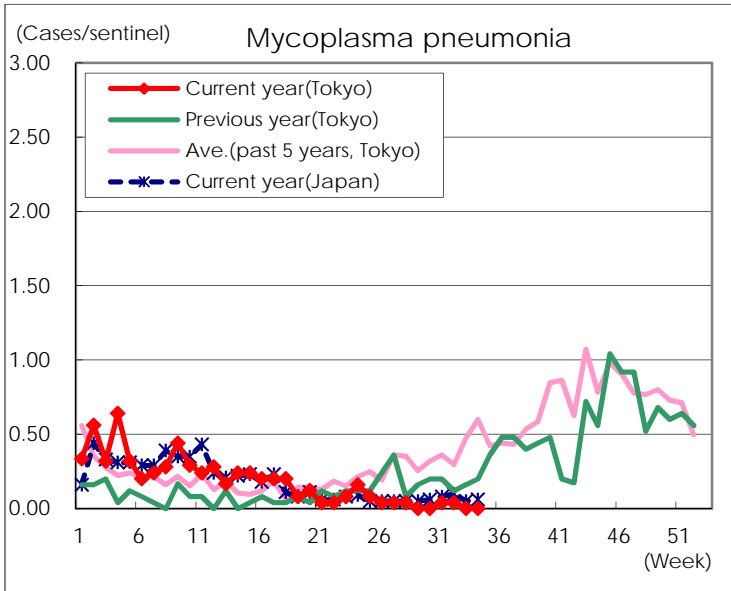
(Blank means 0.)

Disease Trend Graph (weekly reported cases per sentinel in comparison)









Number of sentinel facilities for weekly reporting		
Types of sentinels	Number of sentinels	Sentinels having reported
Pediatric	264	251
Influenza	419	402
Ophthalmic	39	37
Specially-designated	25	25