

3 September 2020 / Number 35

(8/24 ~ 8/30)

Surveillance System in Tokyo, Japan

The infectious diseases which all physicians must report

All physicians must report to health centers the incidence of the diseases which are shown at page one. Health centers electronically report the individual cases to Tokyo Metropolitan Infectious Disease Surveillance Center.

The infectious diseases required to be reported by the sentinels

The numbers of patients who visit the sentinel clinics or hospitals during a week are reported to health centers in Tokyo. And they electronically report the numbers to Tokyo Metropolitan Infectious Disease Surveillance Center. We have about 500 sentinel clinics and hospitals in Tokyo.

Tokyo Metropolitan Institute of Public Health

TEL:81-3-3363-3213 FAX:81-3-5332-7365

e-mail:www@tokyo-eiken.go.jp

URL:idsc.tokyo-eiken.go.jp/

Number of patients with the diseases which all physicians must report

Category	Diseases	Tokyo					Japan		
		32nd	33rd	34th	35th	Cum 2020	35th	Cum 2020	
I	Ebola hemorrhagic fever								
	Crimean-Congo hemorrhagic fever								
	Smallpox								
	South American hemorrhagic fever								
	Plague								
	Marburg disease								
	Lassa fever								
II	Acute poliomyelitis								
	Tuberculosis	60	39	37	46	1,609	293	11,398	
	Diphtheria								
	Severe Acute Respiratory Syndrome(SARS)								
	Middle East Respiratory Syndrome (MERS)								
	Avian influenza H5N1								
	Avian influenza H7N9								
※	Novel Coronavirus 2019 infection								
III	Cholera							1	
	Shigellosis					11	2	57	
	Enterohemorrhagic Escherichia coli infection	8	8	12	10	164	100	1,667	
	Typhoid fever					2		19	
	Paratyphoid fever					1		7	
IV	Hepatitis E	2	2		1	84	6	298	
	West Nile fever								
	Hepatitis A					20	1	96	
	Echinococcosis						1	11	
	Yellow fever								
	Psittacosis							5	
	Omsk hemorrhagic fever								
	Relapsing fever						1	10	
	Kyasanur forest disease								
	Q fever								
	Rabies							1	
	Coccidioidomycosis					1		3	
	Monkeypox								
	Zika virus infection							1	
	Severe Fever with Thrombocytopenia Syndrome							1	47
	Hemorrhagic fever with renal syndrome								
	Western equine encephalitis								
	Tick-borne encephalitis								
	Anthrax								
	Chikungunya fever								3
	Scrub typhus(Tsutsugamushi disease)	1				6			110
	Dengue fever					12			41
	Eastern equine encephalitis								
	Avian influenza (excluding H5N1 and H7N9)								
	Nipah virus infection								
	Japanese spotted fever							17	194
	Japanese encephalitis								2
	Hantavirus pulmonary syndrome								
	Herpes B virus infection								
	Glanders								
	Brucellosis								1
	Venezuelan equine encephalitis								
	Hendra virus infection								
Epidemic typhus									
Botulism						1	1	4	
Malaria						5	2	18	
Tularemia									
Lyme disease						1	1	19	
Lyssavirus infection(excluding rabies)									
Rift valley fever									
Melioidosis									
Legionellosis	10	3	5	3	90	26	1,302		
Leptospirosis		1			1			3	
	Rocky mountain spotted fever								

Category	Diseases	Tokyo					Japan	
		32nd	33rd	34th	35th	Cum 2020	35th	Cum 2020
V	Amebiasis		1	2	3	79	13	401
	Viral hepatitis(excluding hepatitis A and E)	1	1	2	1	42	4	168
	CRE infection	4	4	11	4	96	33	1,151
	Acute Flaccid Paralysis (excluding Acute poliomyelitis)					2	1	26
	Acute encephalitis(excluding JE and WNE)	1			2	26	6	377
	Cryptosporidiosis						1	5
	Creutzfeldt-Jakob disease					11		98
	Severe invasive streptococcal infections(TSLS)	5	2	4	4	73	8	532
	Acquired immunodeficiency syndrome (AIDS)	10	8	9	2	243	6	681
	Giardiasis					4		17
	Invasive <i>Haemophilus influenzae</i> disease	1			1	21	2	191
	Invasive meningococcal disease		1			2		12
	Invasive pneumococcal disease	1	3	2		113	9	1,161
	Varicella (limited to hospitalized case)	1	1	1		33	2	242
	Congenital rubella syndrome							1
	Syphilis	29	25	23	23	1,010	45	3,751
	Disseminated cryptococcosis			2		12	1	97
	Tetanus			1		5		65
	Vancomycin-resistant <i>S. aureus</i> infection							
	Vancomycin-resistant Enterococcus infection					6	2	89
Pertussis		1		2	233	17	2,664	
Rubella				1	22	2	89	
Measles					2		12	
MDRA infection							9	

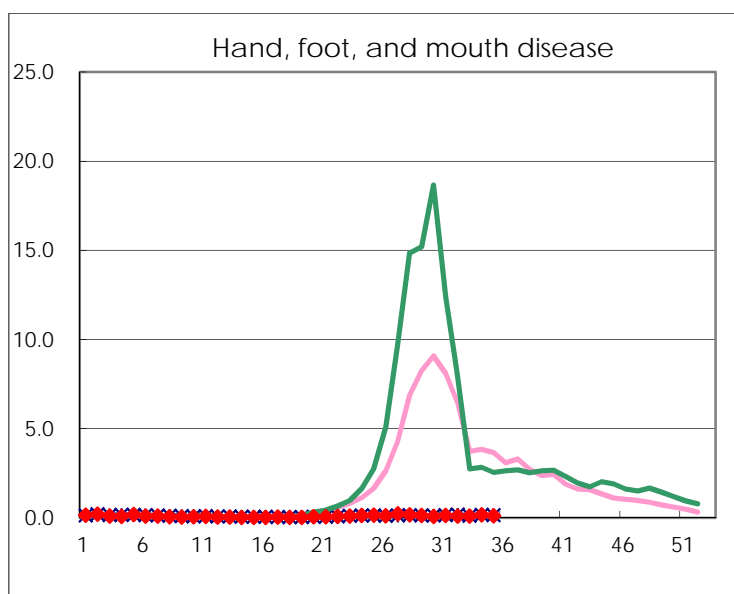
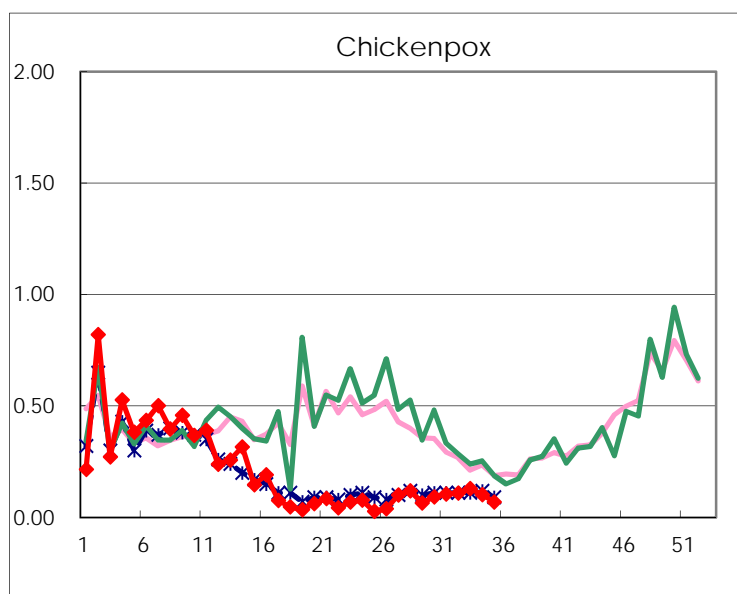
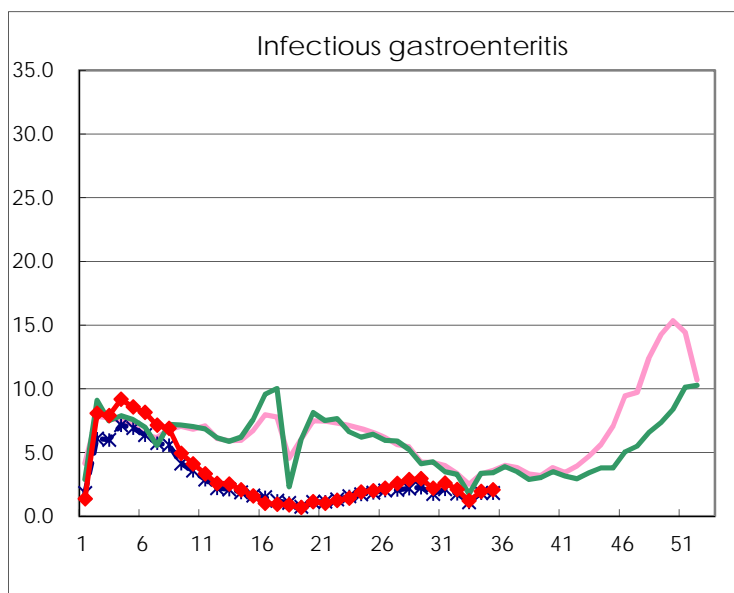
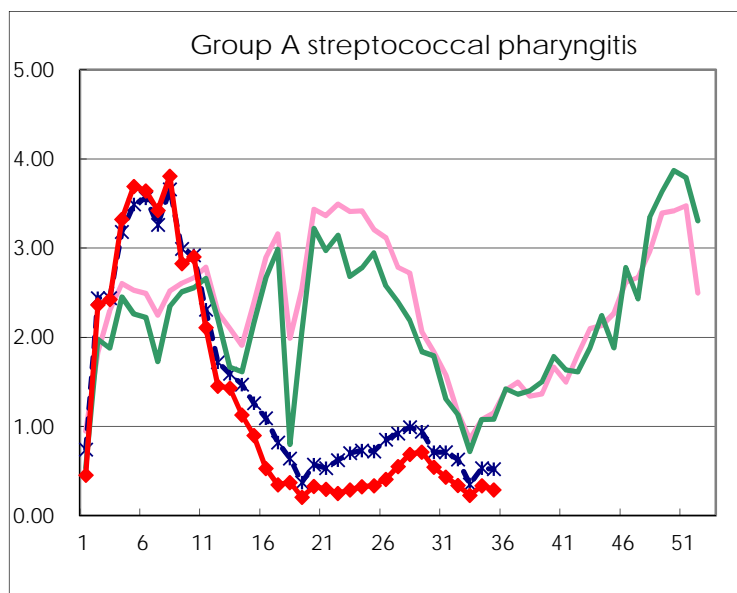
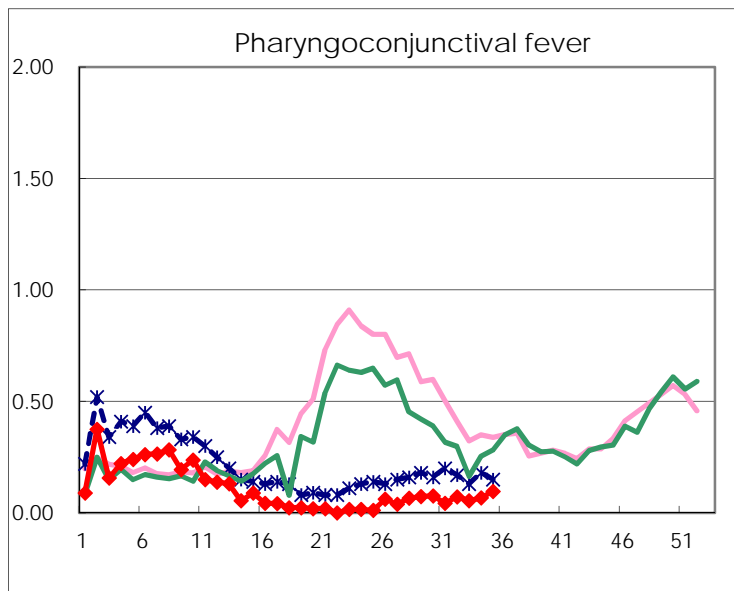
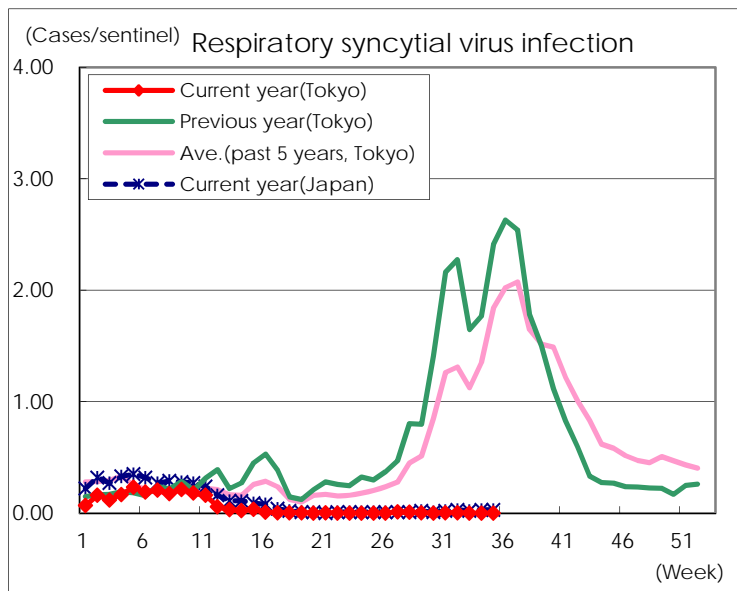
※ Designated infectious disease

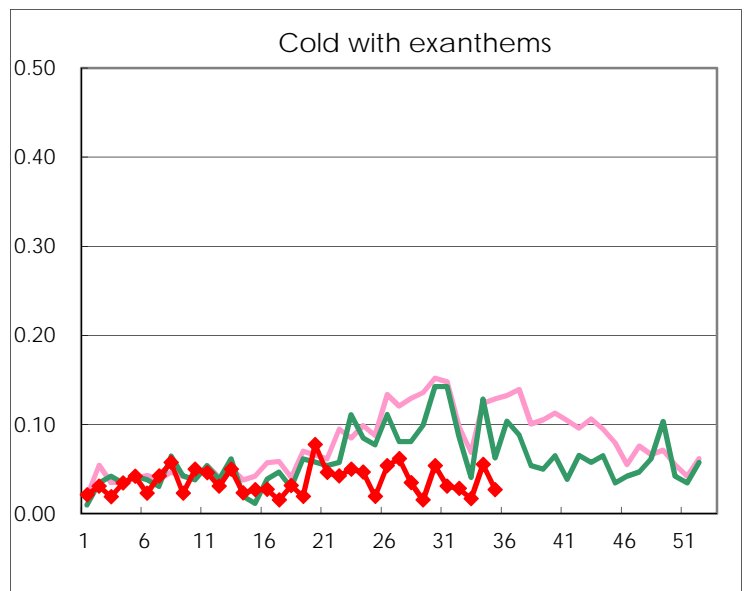
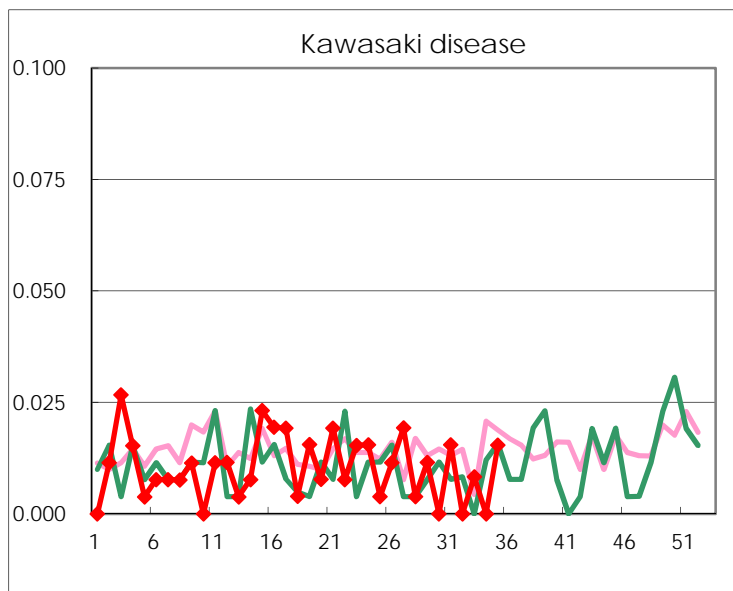
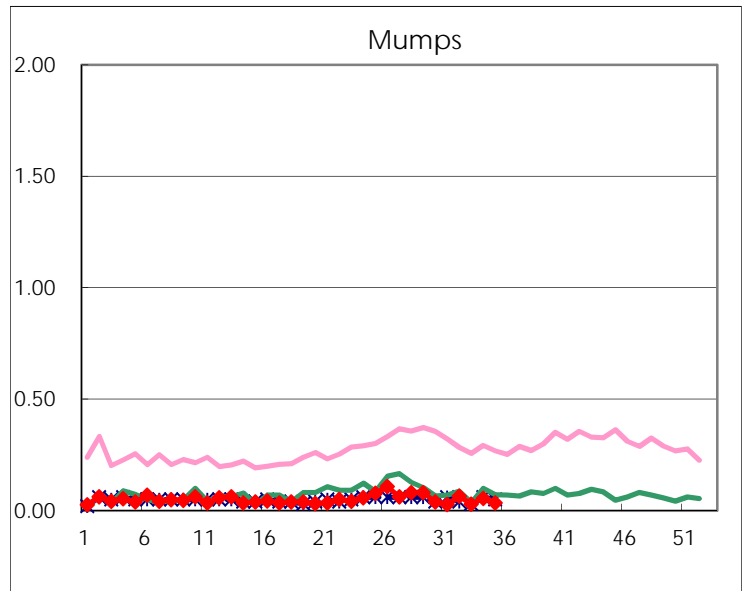
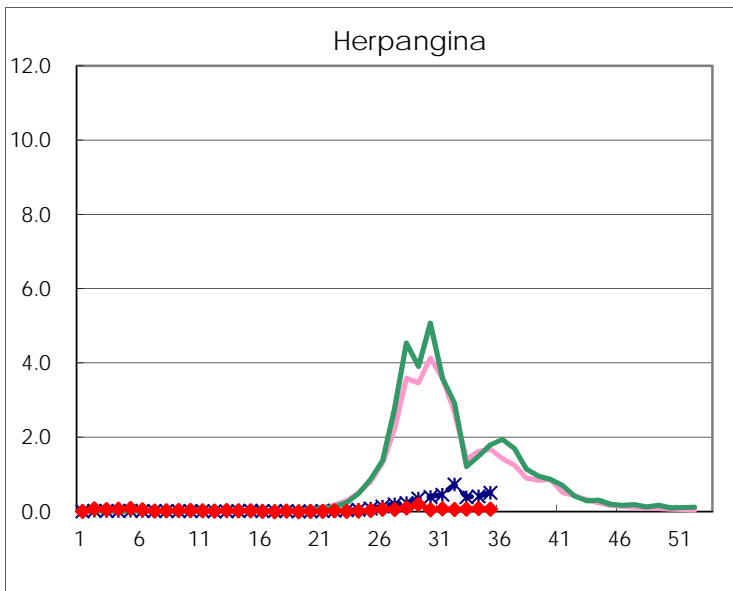
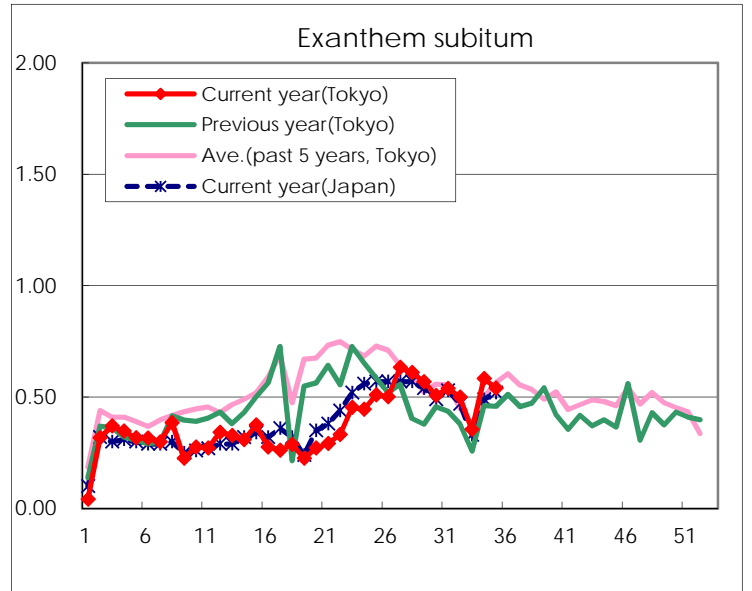
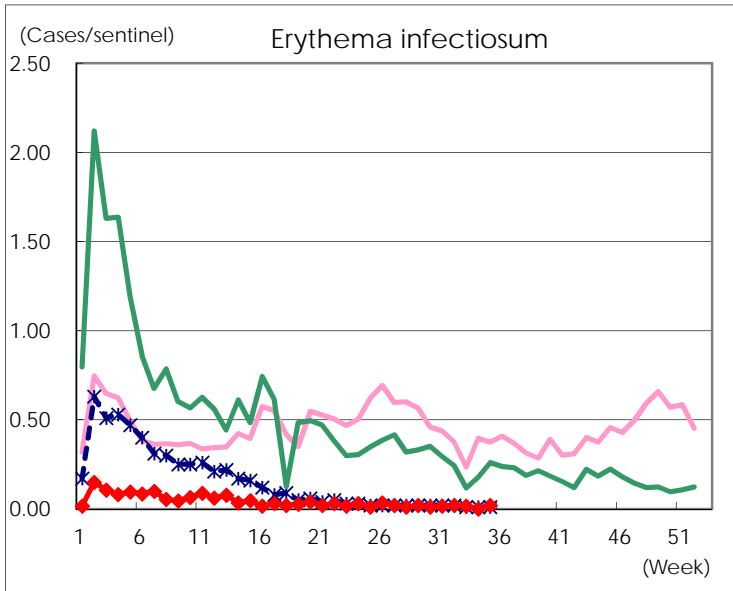
Number of patients with the diseases to be reported
by the designated clinics and hospitals

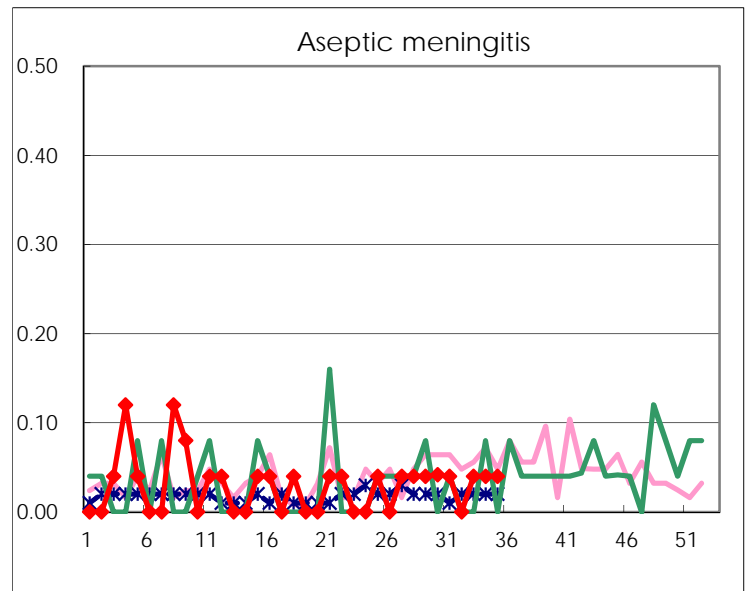
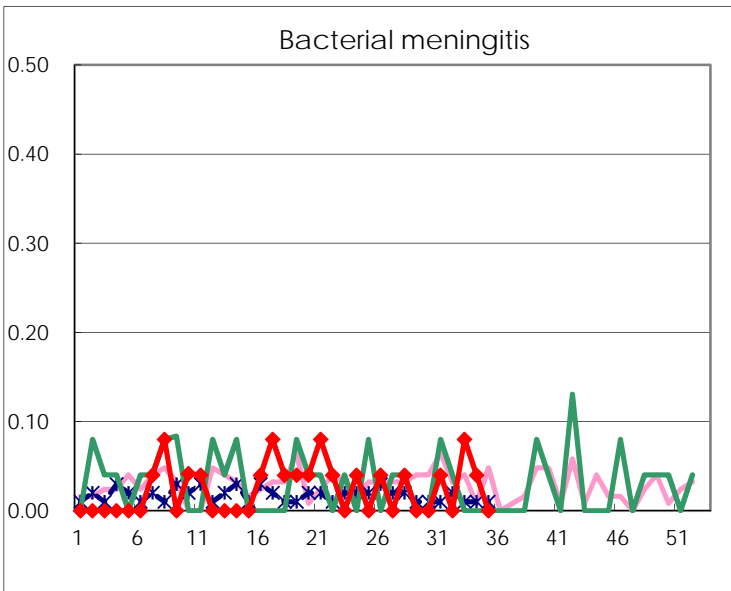
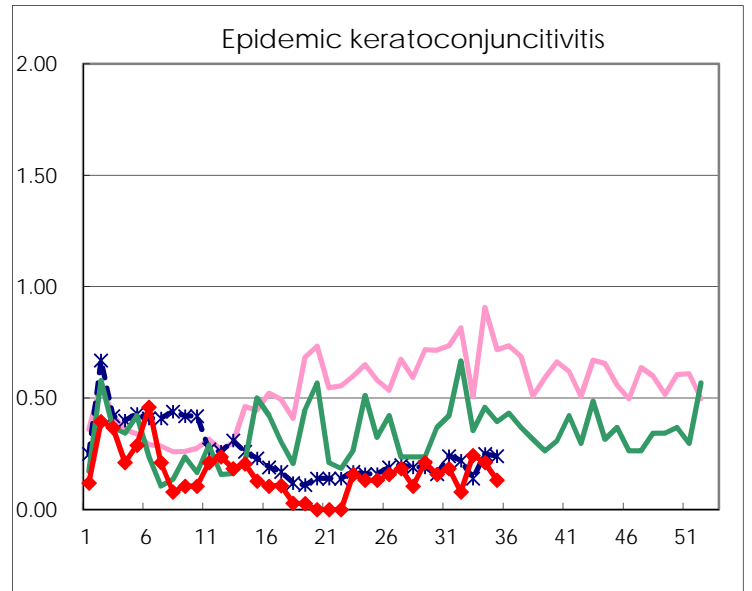
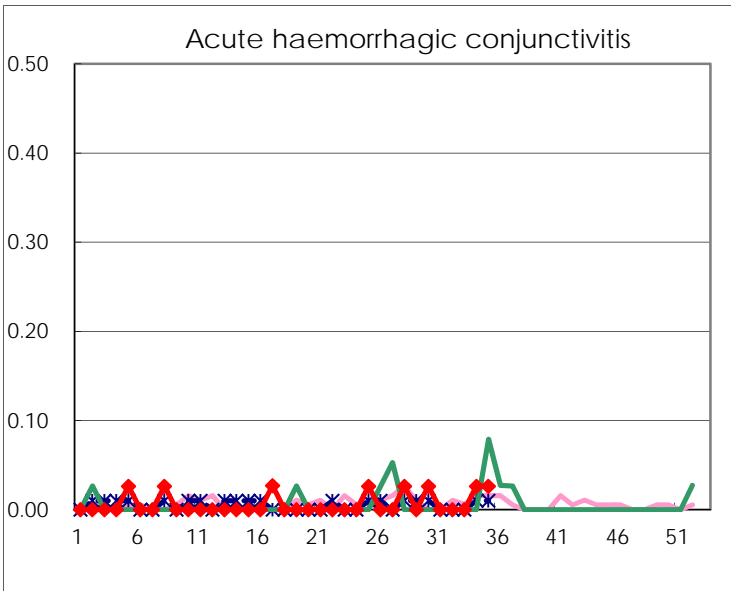
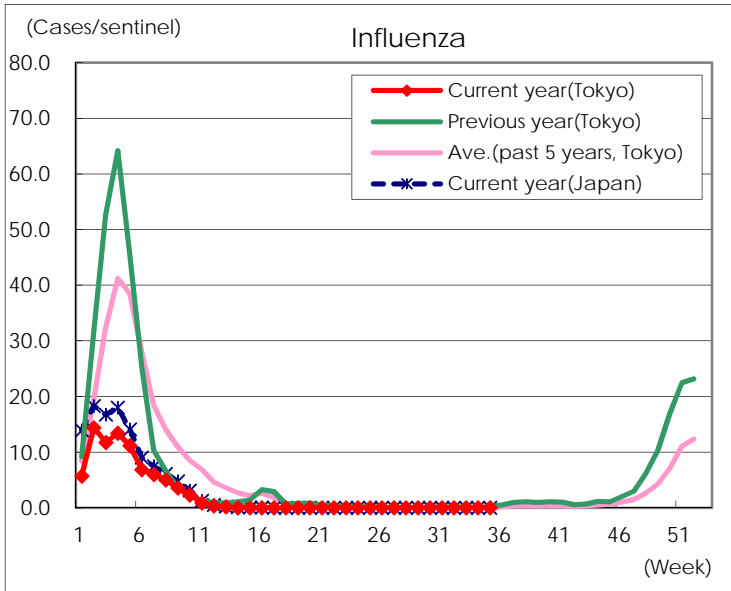
Diseases	Tokyo				
	32nd	33rd	34th	35th	/sentinel
Respiratory syncytial virus infection	1				
Pharyngoconjunctival fever	18	13	17	25	0.10
Group A streptococcal pharyngitis	84	54	85	74	0.29
Infectious gastroenteritis	519	287	490	535	2.07
Chickenpox	27	31	26	18	0.07
Hand, foot, and mouth disease	21	21	41	26	0.10
Erythema infectiosum	5	4		5	0.02
Exanthem subitum	124	85	148	140	0.54
Herpangina	16	16	21	18	0.07
Mumps	16	7	14	9	0.03
Kawasaki disease		2		4	0.02
Cold with exanths	7	4	14	7	0.03
Influenza		1			
Acute hemorrhagic conjunctivitis			1	1	0.03
Epidemic keratoconjunctivitis	3	9	8	5	0.13
Bacterial meningitis		2	1		
Aseptic meningitis		1	1	1	0.04
Mycoplasma pneumonia	1				
Chlamydial pneumonia (excluding psittacosis)		2			
Infectious gastroenteritis (only by Rotavirus)			1		
Influenza-Associated Hospitalizations					

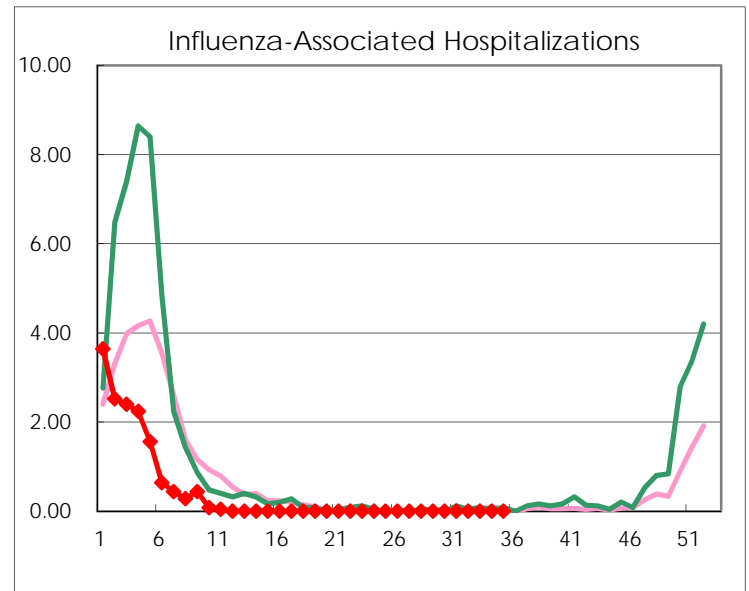
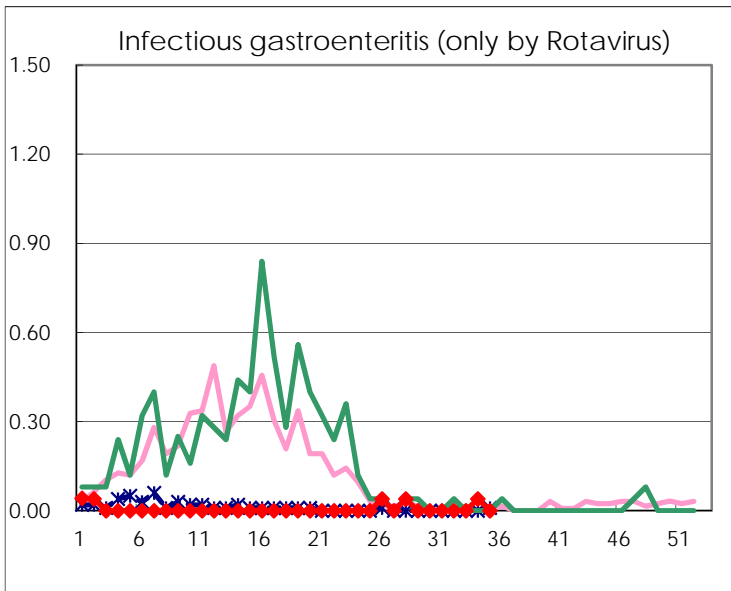
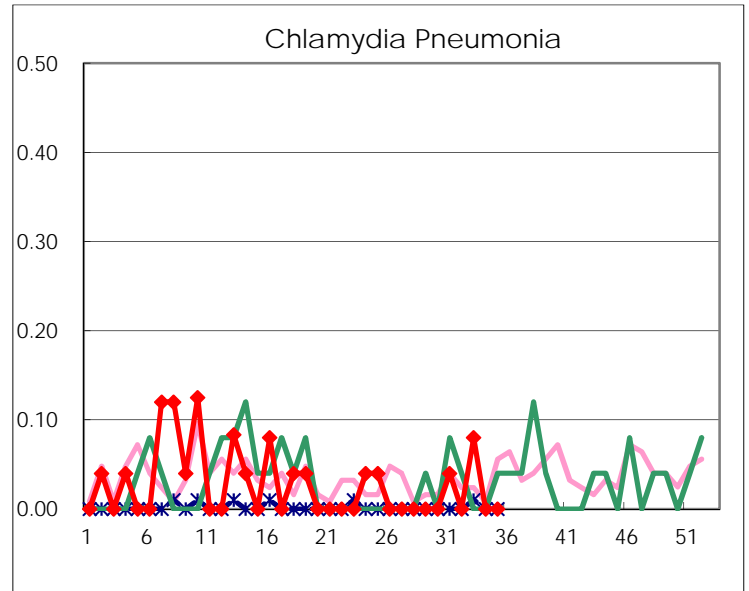
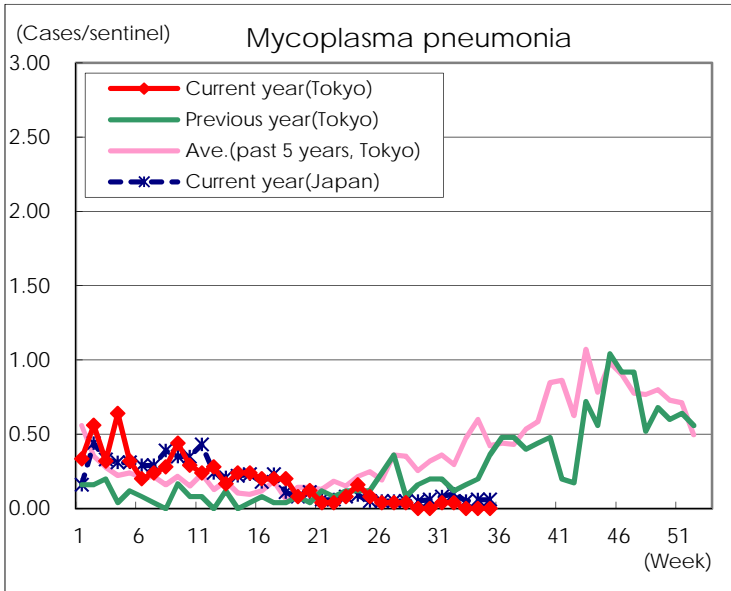
(Blank means 0.)

Disease Trend Graph (weekly reported cases per sentinel in comparison)









Number of sentinel facilities for weekly reporting		
Types of sentinels	Number of sentinels	Sentinels having reported
Pediatric	264	259
Influenza	419	409
Ophthalmic	39	38
Specially-designated	25	25