

17 September 2020 / Number 37

(9/7 ~ 9/13)

Surveillance System in Tokyo, Japan

The infectious diseases which all physicians must report

All physicians must report to health centers the incidence of the diseases which are shown at page one. Health centers electronically report the individual cases to Tokyo Metropolitan Infectious Disease Surveillance Center.

The infectious diseases required to be reported by the sentinels

The numbers of patients who visit the sentinel clinics or hospitals during a week are reported to health centers in Tokyo. And they electronically report the numbers to Tokyo Metropolitan Infectious Disease Surveillance Center. We have about 500 sentinel clinics and hospitals in Tokyo.

Tokyo Metropolitan Institute of Public Health

TEL:81-3-3363-3213 FAX:81-3-5332-7365

e-mail:www@tokyo-eiken.go.jp

URL:idsc.tokyo-eiken.go.jp/

Number of patients with the diseases which all physicians must report

Category	Diseases	Tokyo					Japan		
		34th	35th	36th	37th	Cum 2020	37th	Cum 2020	
I	Ebola hemorrhagic fever								
	Crimean-Congo hemorrhagic fever								
	Smallpox								
	South American hemorrhagic fever								
	Plague								
	Marburg disease								
	Lassa fever								
II	Acute poliomyelitis								
	Tuberculosis	41	53	43	54	1,718	260	12,062	
	Diphtheria								
	Severe Acute Respiratory Syndrome(SARS)								
	Middle East Respiratory Syndrome (MERS)								
	Avian influenza H5N1								
	Avian influenza H7N9								
※	Novel Coronavirus 2019 infection								
III	Cholera							1	
	Shigellosis					11		57	
	Enterohemorrhagic Escherichia coli infection	12	11	18	14	197	95	1,883	
	Typhoid fever					2	2	21	
	Paratyphoid fever					1		7	
IV	Hepatitis E		1			84	1	308	
	West Nile fever								
	Hepatitis A					20	1	98	
	Echinococcosis						1	13	
	Yellow fever								
	Psittacosis							5	
	Omsk hemorrhagic fever								
	Relapsing fever							11	
	Kyasanur forest disease								
	Q fever								
	Rabies							1	
	Coccidioidomycosis					1		3	
	Monkeypox								
	Zika virus infection							1	
	Severe Fever with Thrombocytopenia Syndrome							1	55
	Hemorrhagic fever with renal syndrome								
	Western equine encephalitis								
	Tick-borne encephalitis								
	Anthrax								
	Chikungunya fever								3
	Scrub typhus(Tsutsugamushi disease)						6		112
	Dengue fever						12		41
	Eastern equine encephalitis								
	Avian influenza (excluding H5N1 and H7N9)								
	Nipah virus infection								
	Japanese spotted fever							10	221
	Japanese encephalitis								2
	Hantavirus pulmonary syndrome								
	Herpes B virus infection								
	Glanders								
	Brucellosis								1
	Venezuelan equine encephalitis								
	Hendra virus infection								
Epidemic typhus									
Botulism						1		4	
Malaria					1	6		19	
Tularemia									
Lyme disease						1		20	
Lyssavirus infection(excluding rabies)									
Rift valley fever									
Melioidosis									
Legionellosis	5	3	3	1	94	40	1,379		
Leptospirosis					1			3	
Rocky mountain spotted fever									

Category	Diseases	Tokyo					Japan	
		34th	35th	36th	37th	Cum 2020	37th	Cum 2020
V	Amebiasis	2	3	2	3	84	10	429
	Viral hepatitis(excluding hepatitis A and E)	2	1	2	2	46	6	179
	CRE infection	11	4	4	4	105	31	1,252
	Acute Flaccid Paralysis (excluding Acute poliomyelitis)					2		27
	Acute encephalitis(excluding JE and WNE)		2	1		27	5	389
	Cryptosporidiosis							5
	Creutzfeldt-Jakob disease					11	2	103
	Severe invasive streptococcal infections(TSLS)	4	4	1		74	7	561
	Acquired immunodeficiency syndrome (AIDS)	9	4	11	2	258	8	719
	Giardiasis					4		18
	Invasive <i>Haemophilus influenzae</i> disease		1			21	1	197
	Invasive meningococcal disease					2		13
	Invasive pneumococcal disease	2		4	2	118	10	1,188
	Varicella (limited to hospitalized case)	1				33	5	250
	Congenital rubella syndrome							1
	Syphilis	23	24	28	22	1,061	58	3,971
	Disseminated cryptococcosis	2		1		13	2	103
	Tetanus	1				5	3	76
	Vancomycin-resistant <i>S. aureus</i> infection							
	Vancomycin-resistant Enterococcus infection					6	2	93
Pertussis		2	2	5	240	12	2,703	
Rubella		1		1	23	1	90	
Measles					2		12	
MDRA infection							9	

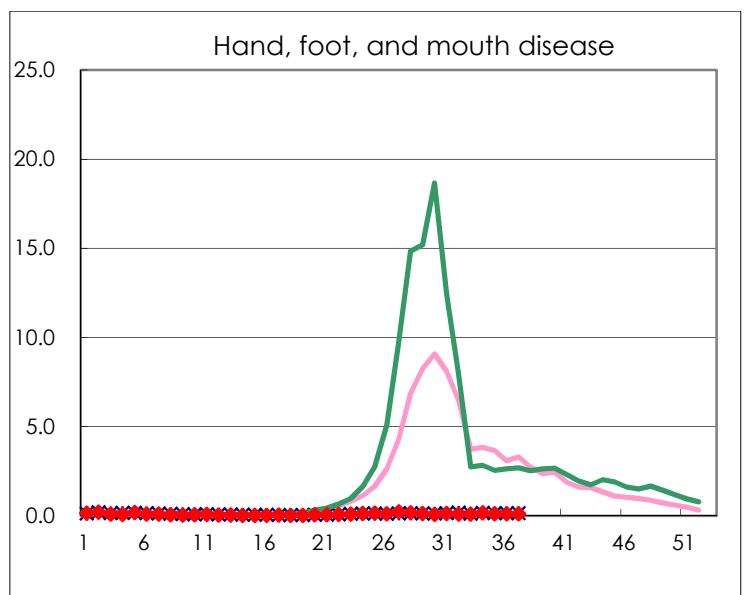
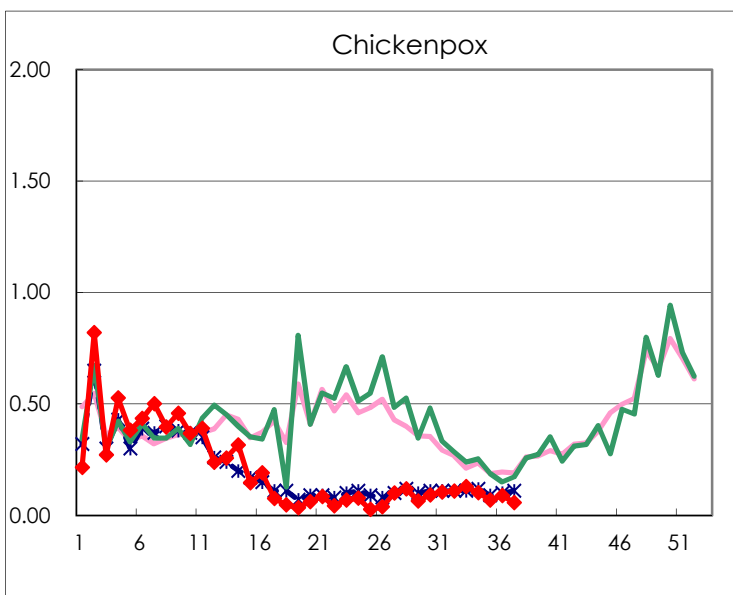
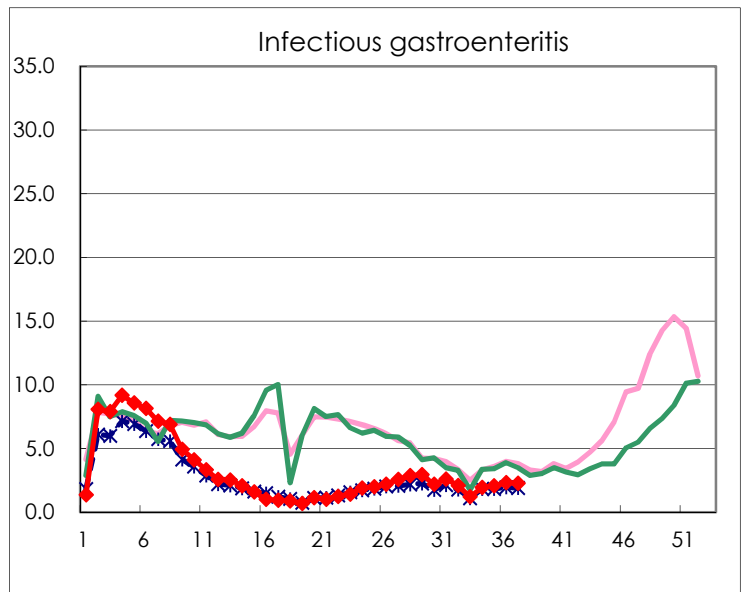
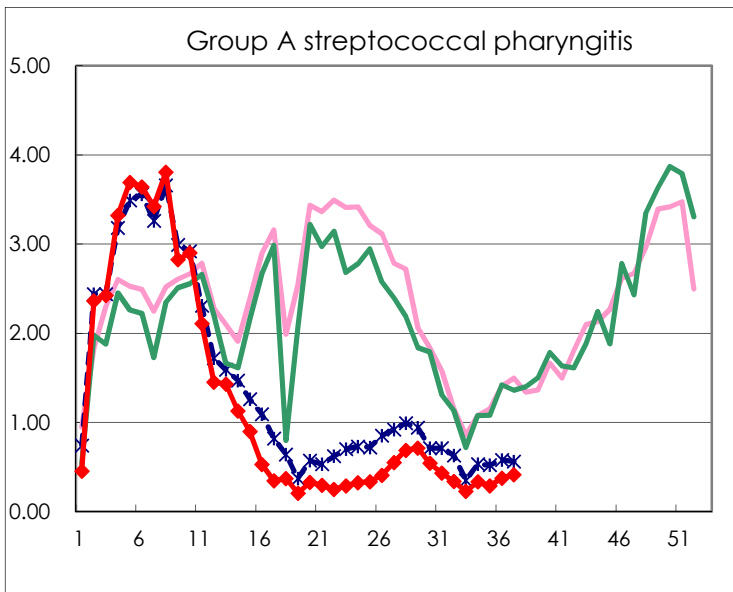
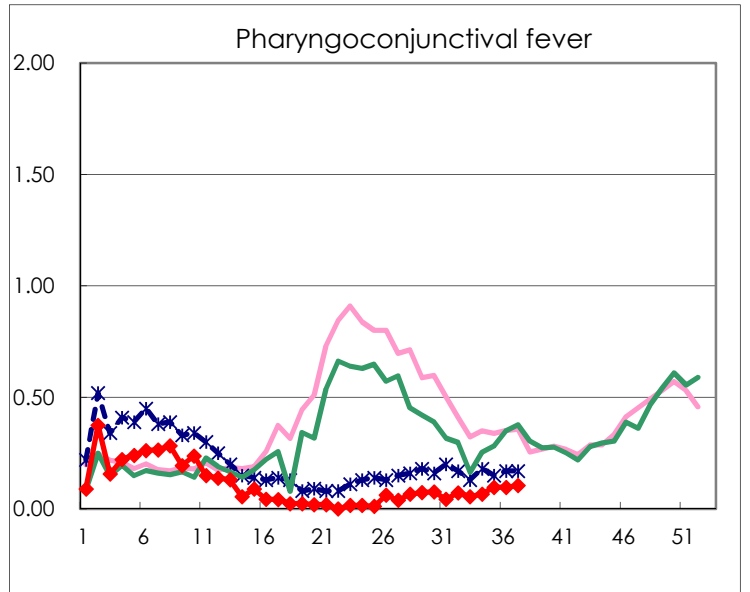
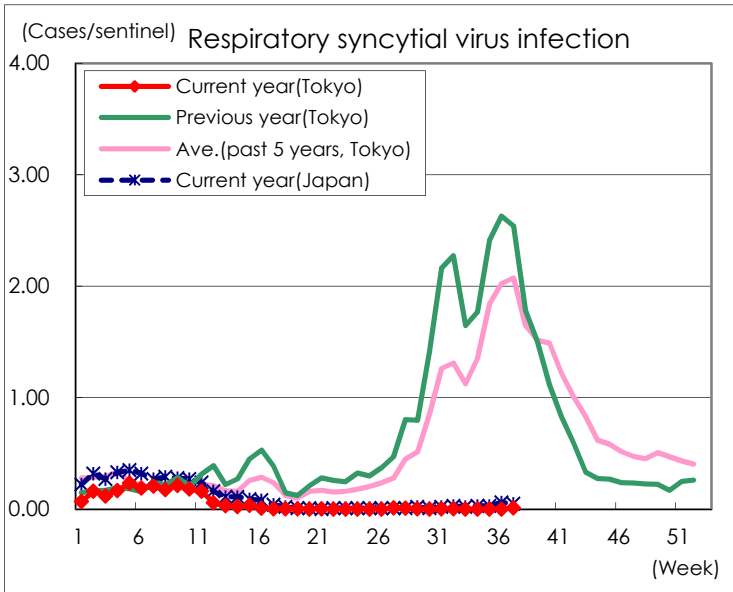
※ Designated infectious disease

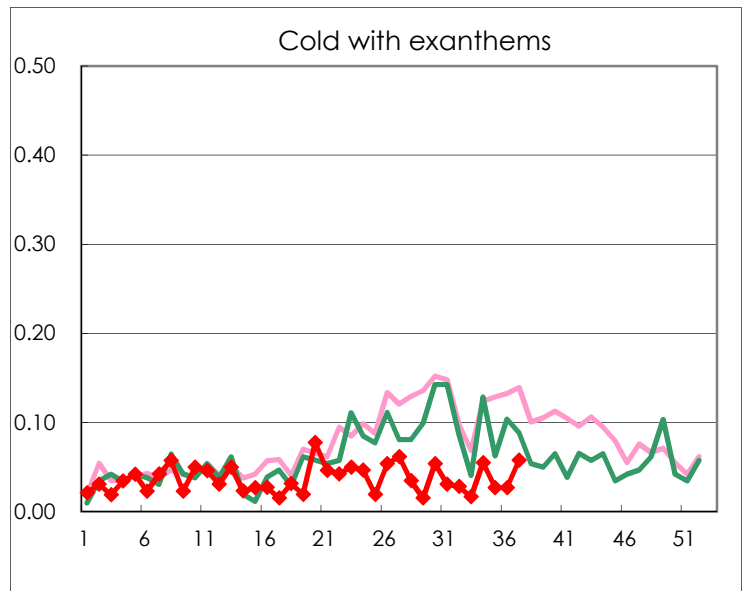
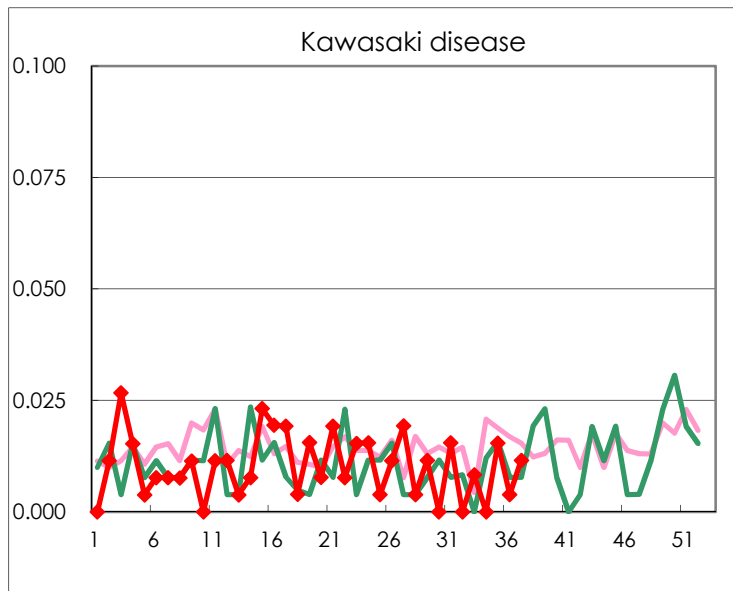
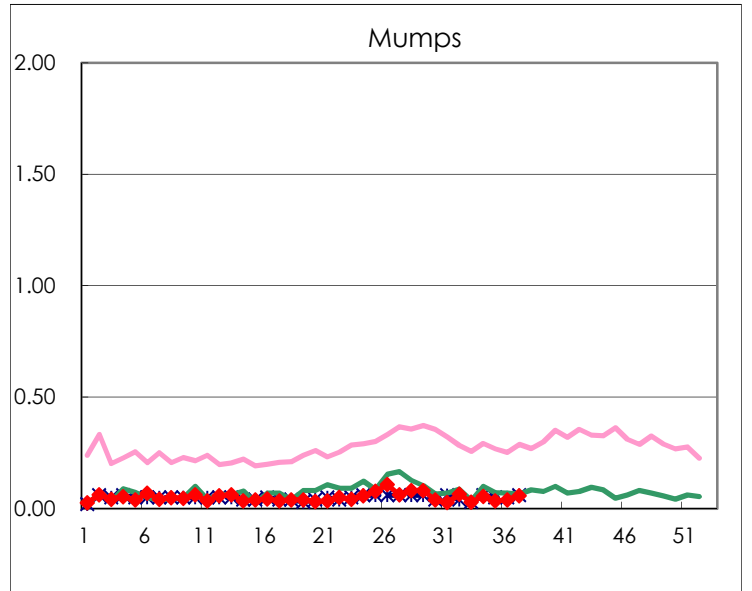
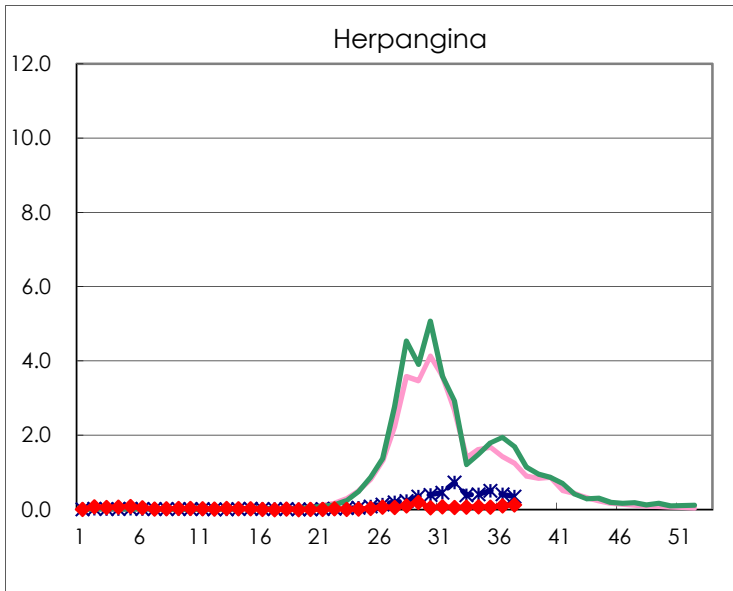
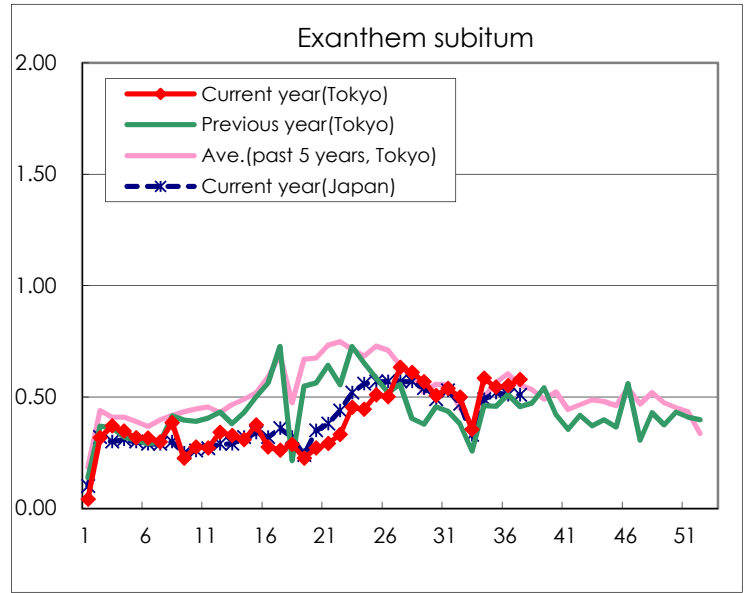
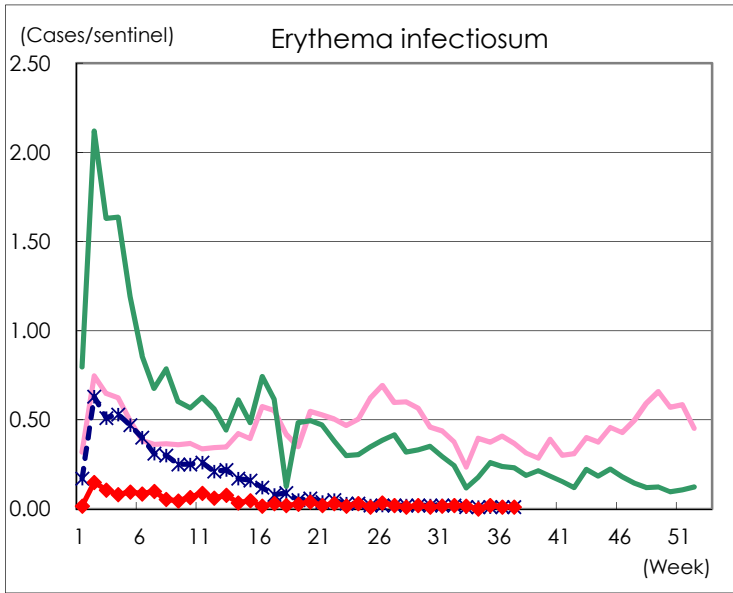
Number of patients with the diseases to be reported
by the designated clinics and hospitals

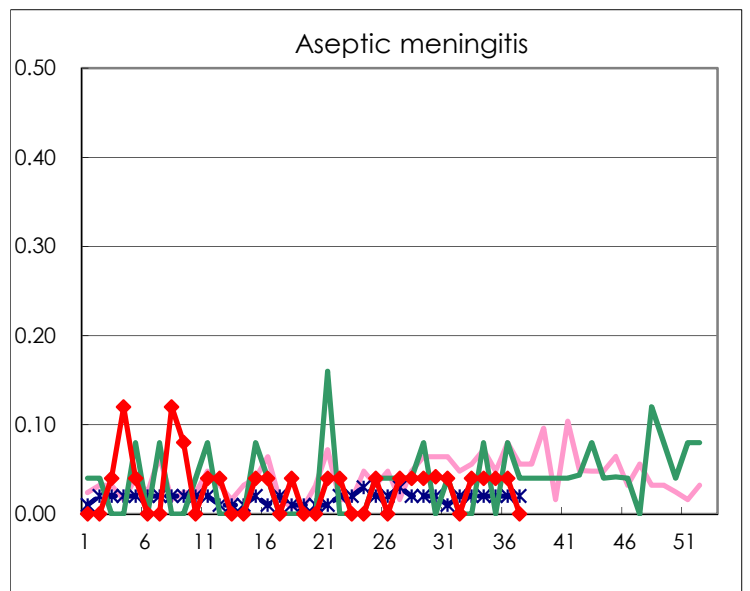
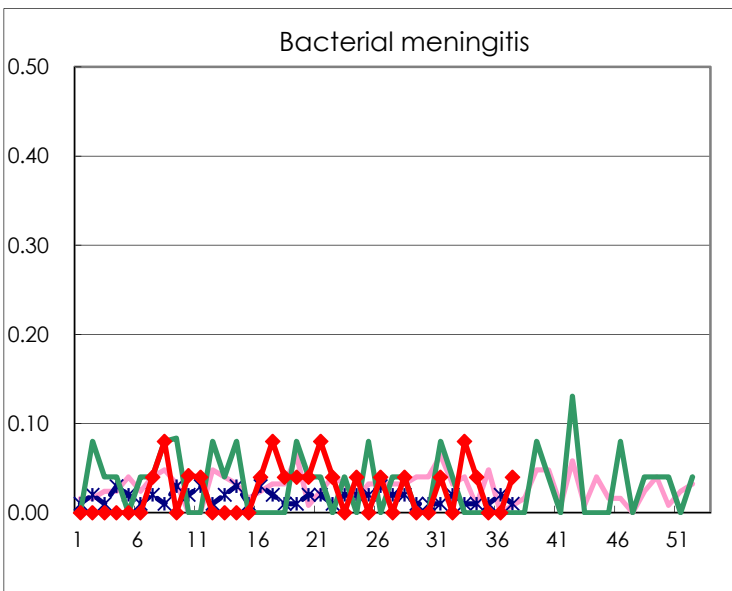
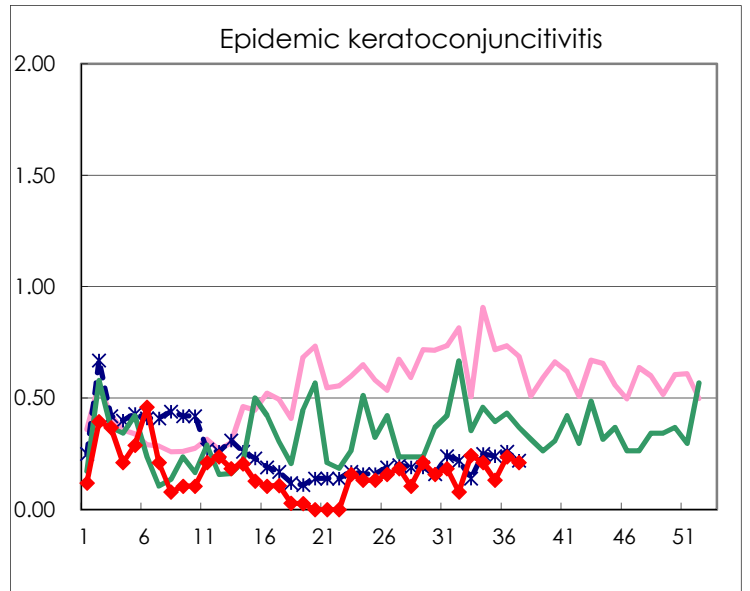
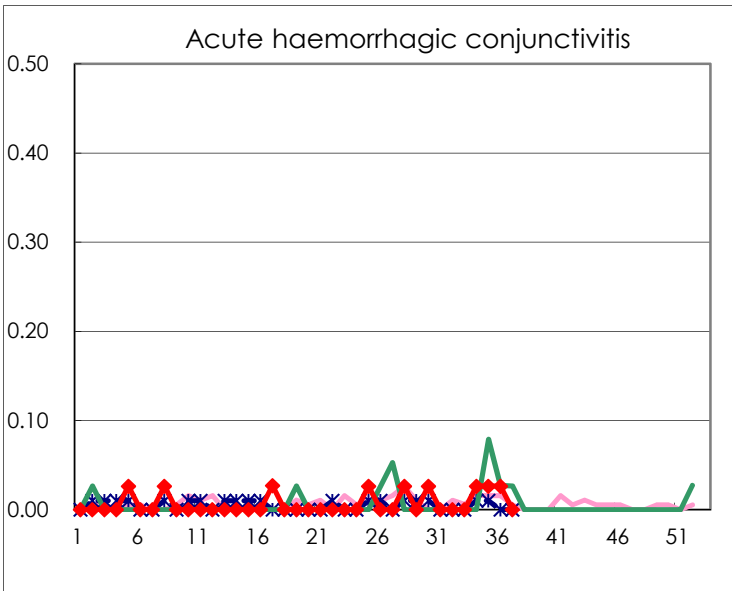
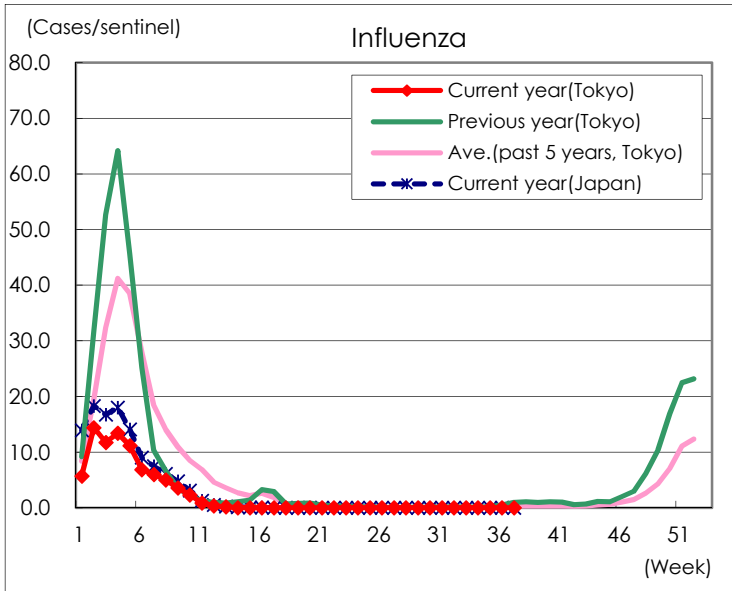
Diseases	Tokyo				
	34th	35th	36th	37th	/sentinel
Respiratory syncytial virus infection				3	0.01
Pharyngoconjunctival fever	17	25	25	27	0.10
Group A streptococcal pharyngitis	85	74	97	107	0.41
Infectious gastroenteritis	491	535	598	588	2.27
Chickenpox	26	18	23	15	0.06
Hand, foot, and mouth disease	41	26	27	28	0.11
Erythema infectiosum		5	3	3	0.01
Exanthem subitum	149	141	143	150	0.58
Herpangina	21	18	28	33	0.13
Mumps	14	9	10	15	0.06
Kawasaki disease		4	1	3	0.01
Cold with exanths	14	7	7	15	0.06
Influenza					
Acute hemorrhagic conjunctivitis	1	1	1		
Epidemic keratoconjunctivitis	8	5	9	8	0.21
Bacterial meningitis	1			1	0.04
Aseptic meningitis	1	1	1		
Mycoplasma pneumonia				2	0.08
Chlamydial pneumonia (excluding psittacosis)					
Infectious gastroenteritis (only by Rotavirus)	1			2	0.08
Influenza-Associated Hospitalizations					

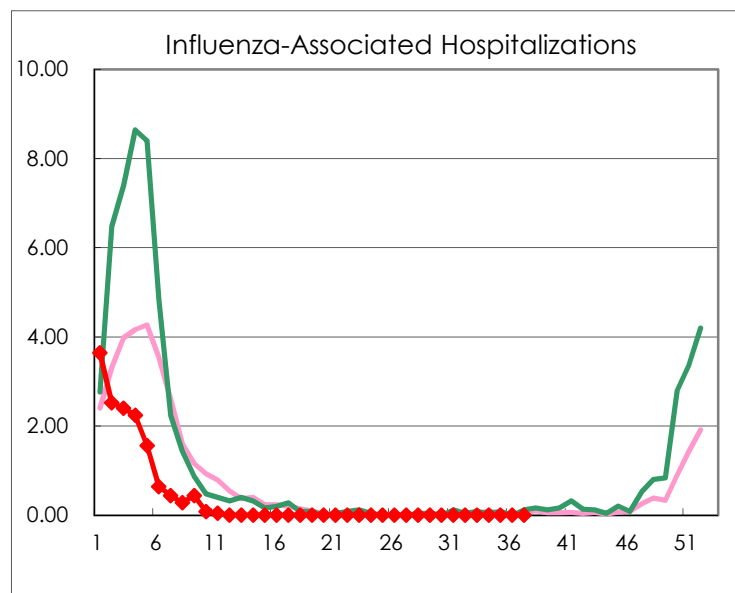
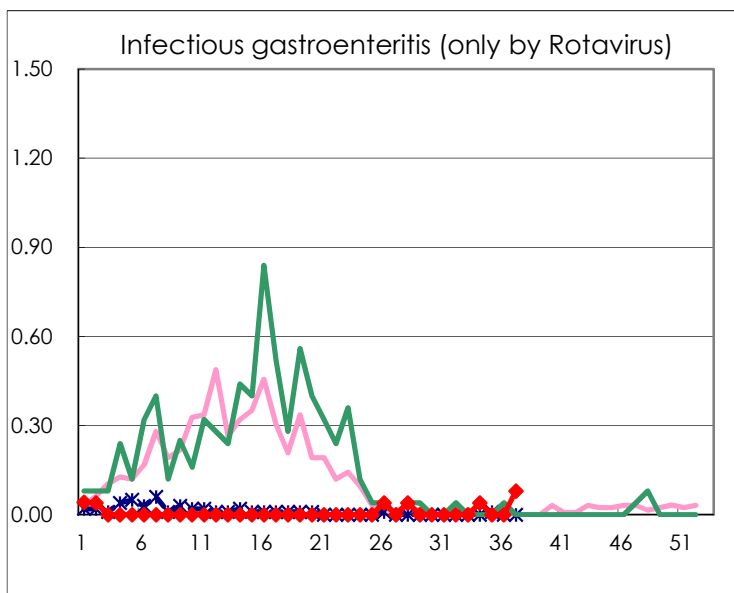
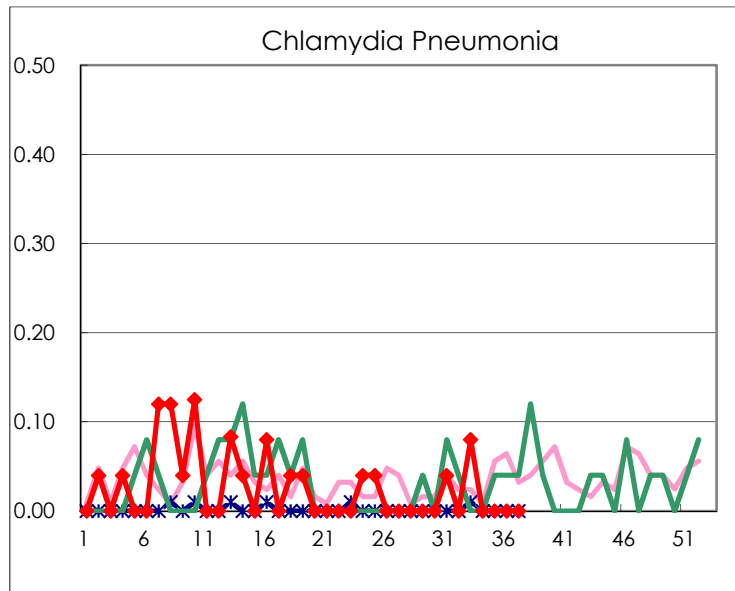
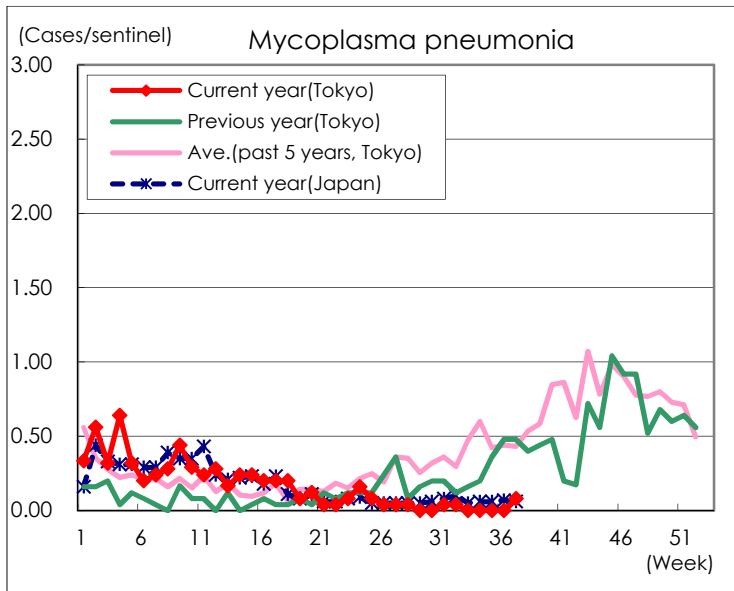
(Blank means 0.)

Disease Trend Graph (weekly reported cases per sentinel in comparison)









Number of sentinel facilities for weekly reporting		
Types of sentinels	Number of sentinels	Sentinels having reported
Pediatric	264	259
Influenza	419	411
Ophthalmic	39	38
Specially-designated	25	25