

25 September 2020 / Number 38

(9/14 ~ 9/20)

Surveillance System in Tokyo, Japan

The infectious diseases which all physicians must report

All physicians must report to health centers the incidence of the diseases which are shown at page one. Health centers electronically report the individual cases to Tokyo Metropolitan Infectious Disease Surveillance Center.

The infectious diseases required to be reported by the sentinels

The numbers of patients who visit the sentinel clinics or hospitals during a week are reported to health centers in Tokyo. And they electronically report the numbers to Tokyo Metropolitan Infectious Disease Surveillance Center. We have about 500 sentinel clinics and hospitals in Tokyo.

Tokyo Metropolitan Institute of Public Health

TEL:81-3-3363-3213 FAX:81-3-5332-7365

e-mail:www@tokyo-eiken.go.jp

URL:idsc.tokyo-eiken.go.jp/

Number of patients with the diseases which all physicians must report

Category	Diseases	Tokyo					Japan	
		35th	36th	37th	38th	Cum 2020	38th	Cum 2020
I	Ebola hemorrhagic fever							
	Crimean-Congo hemorrhagic fever							
	Smallpox							
	South American hemorrhagic fever							
	Plague							
	Marburg disease							
	Lassa fever							
II	Acute poliomyelitis							
	Tuberculosis	53	48	55	39	1,763	256	12,399
	Diphtheria							
	Severe Acute Respiratory Syndrome(SARS)							
	Middle East Respiratory Syndrome (MERS)							
	Avian influenza H5N1							
	Avian influenza H7N9							
※	Novel Coronavirus 2019 infection							
III	Cholera							1
	Shigellosis					11		57
	Enterohemorrhagic Escherichia coli infection	11	19	15	21	221	129	2,065
	Typhoid fever					2		21
	Paratyphoid fever					1		7
IV	Hepatitis E	1			1	85	6	315
	West Nile fever							
	Hepatitis A					20	1	99
	Echinococcosis							13
	Yellow fever							
	Psittacosis							5
	Omsk hemorrhagic fever							
	Relapsing fever						1	12
	Kyasanur forest disease							
	Q fever							
	Rabies							1
	Coccidioidomycosis					1	1	4
	Monkeypox							
	Zika virus infection							1
	Severe Fever with Thrombocytopenia Syndrome							56
	Hemorrhagic fever with renal syndrome							
	Western equine encephalitis							
	Tick-borne encephalitis							
	Anthrax							
	Chikungunya fever							3
	Scrub typhus(Tsutsugamushi disease)					6	1	113
	Dengue fever					12		41
	Eastern equine encephalitis							
	Avian influenza (excluding H5N1 and H7N9)							
	Nipah virus infection							
	Japanese spotted fever						5	227
	Japanese encephalitis							2
	Hantavirus pulmonary syndrome							
	Herpes B virus infection							
	Glanders							
	Brucellosis							1
	Venezuelan equine encephalitis							
	Hendra virus infection							
	Epidemic typhus							
Botulism					1		4	
Malaria			1		6		19	
Tularemia								
Lyme disease					1	1	22	
Lyssavirus infection(excluding rabies)								
Rift valley fever								
Melioidosis								
Legionellosis	3	3	2	6	101	46	1,432	
Leptospirosis					1		3	
Rocky mountain spotted fever								

Category	Diseases	Tokyo					Japan	
		35th	36th	37th	38th	Cum 2020	38th	Cum 2020
V	Amebiasis	3	2	3		84	10	442
	Viral hepatitis(excluding hepatitis A and E)	1	2	2	2	48	4	184
	CRE infection	4	4	6	2	109	25	1,295
	Acute Flaccid Paralysis (excluding Acute poliomyelitis)					2		27
	Acute encephalitis(excluding JE and WNE)	2	1			27	2	392
	Cryptosporidiosis							5
	Creutzfeldt-Jakob disease					11	4	108
	Severe invasive streptococcal infections(TSLS)	4	1		2	76	4	568
	Acquired immunodeficiency syndrome (AIDS)	7	11	2	6	267	14	745
	Giardiasis					4		18
	Invasive <i>Haemophilus influenzae</i> disease	1				21	5	202
	Invasive meningococcal disease					2		13
	Invasive pneumococcal disease		4	2		119	2	1,195
	Varicella (limited to hospitalized case)			1	2	36	2	256
	Congenital rubella syndrome							1
	Syphilis	25	28	22	24	1,090	59	4,073
	Disseminated cryptococcosis		1			13	2	106
	Tetanus					5	2	78
	Vancomycin-resistant <i>S. aureus</i> infection							
	Vancomycin-resistant Enterococcus infection					6	1	96
Pertussis	2	2	5	3	243	12	2,716	
Rubella	1		1		23		90	
Measles					2		12	
MDRA infection							9	

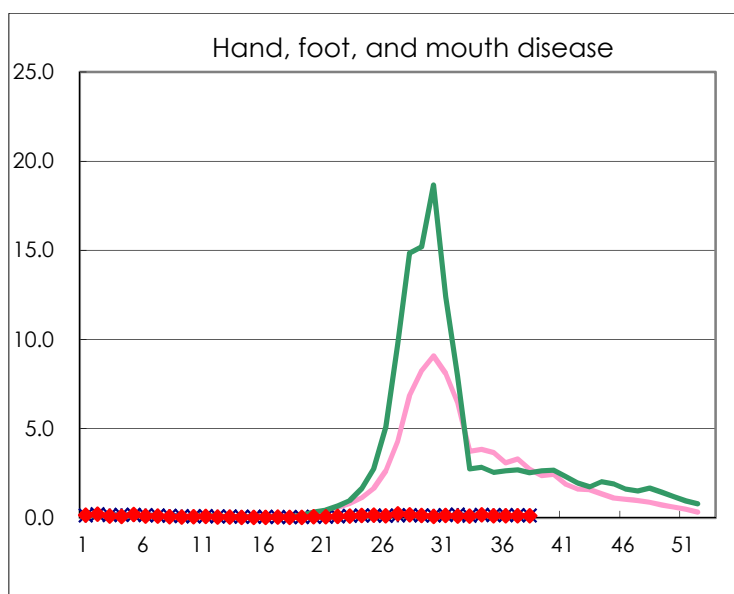
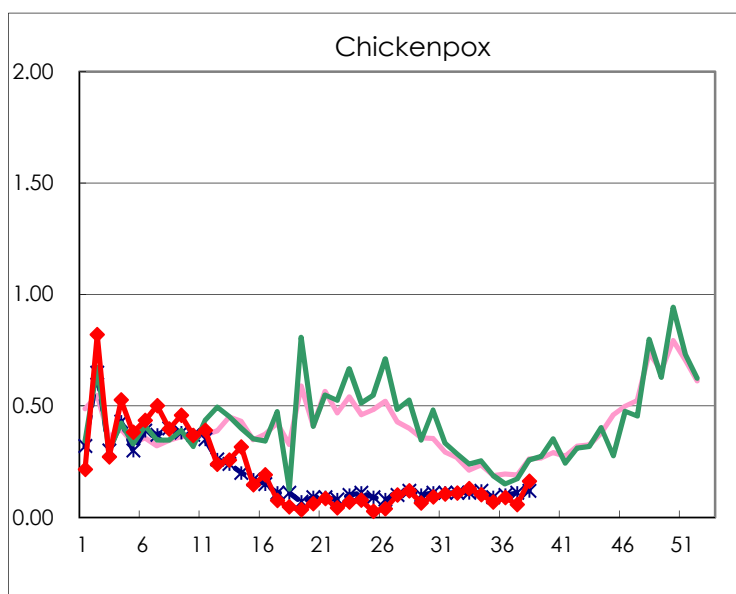
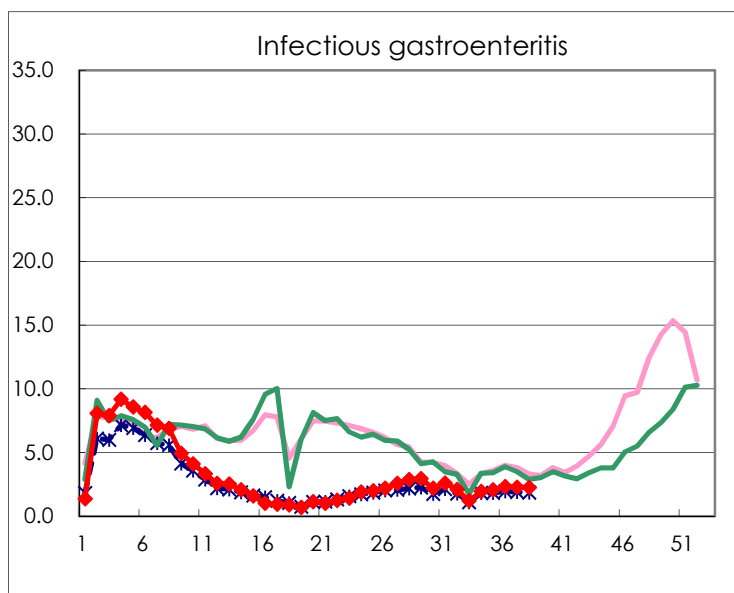
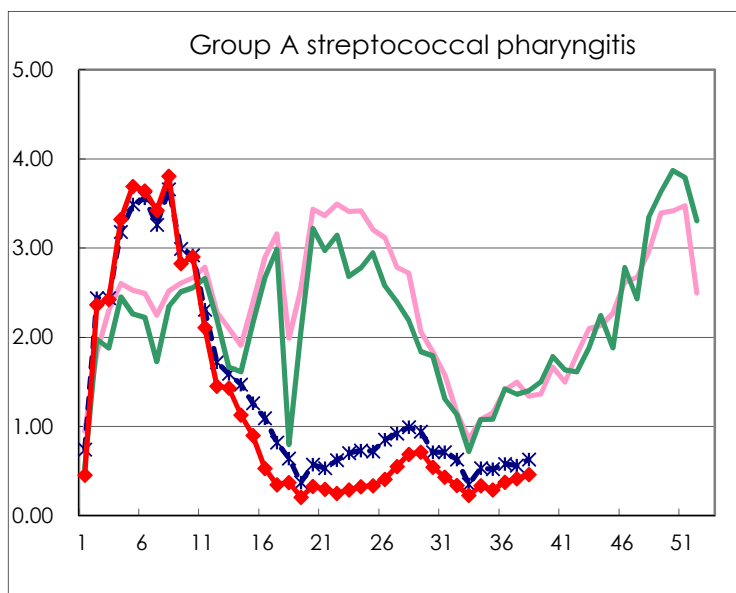
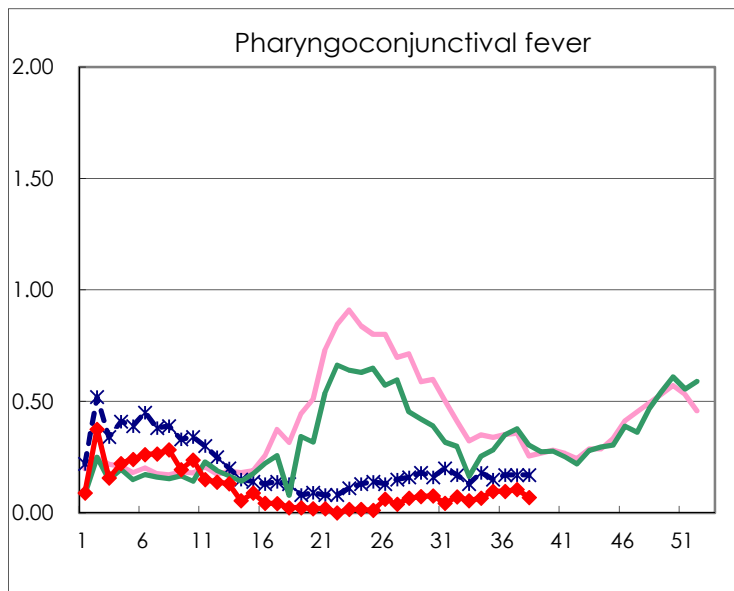
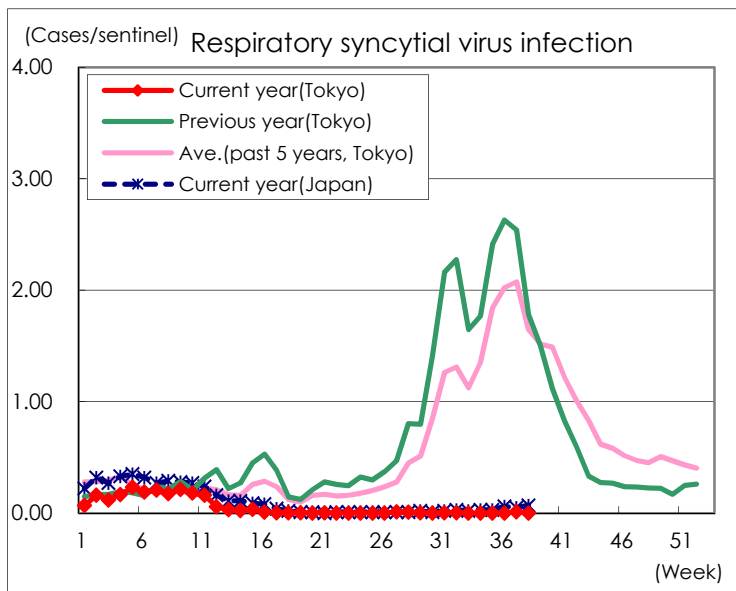
※ Designated infectious disease

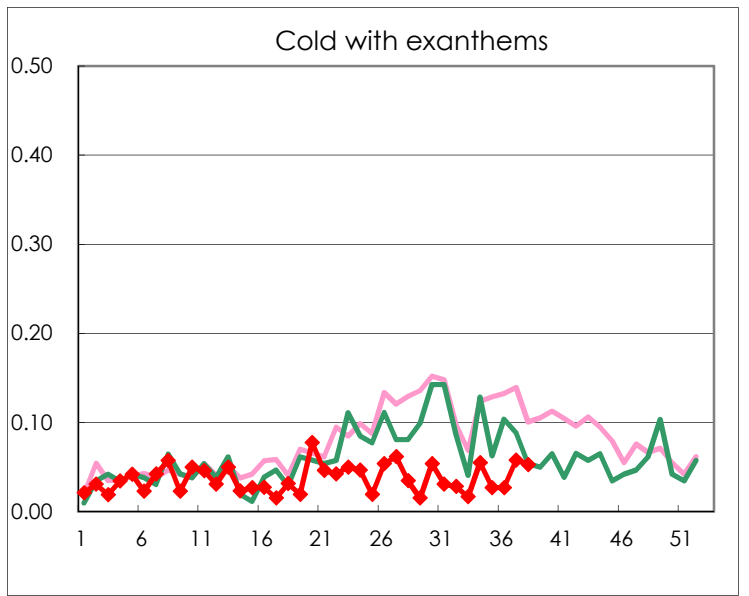
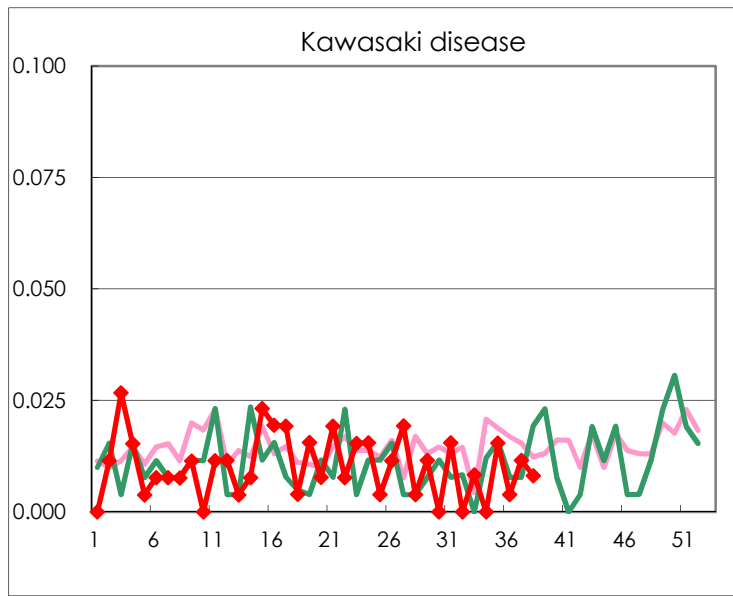
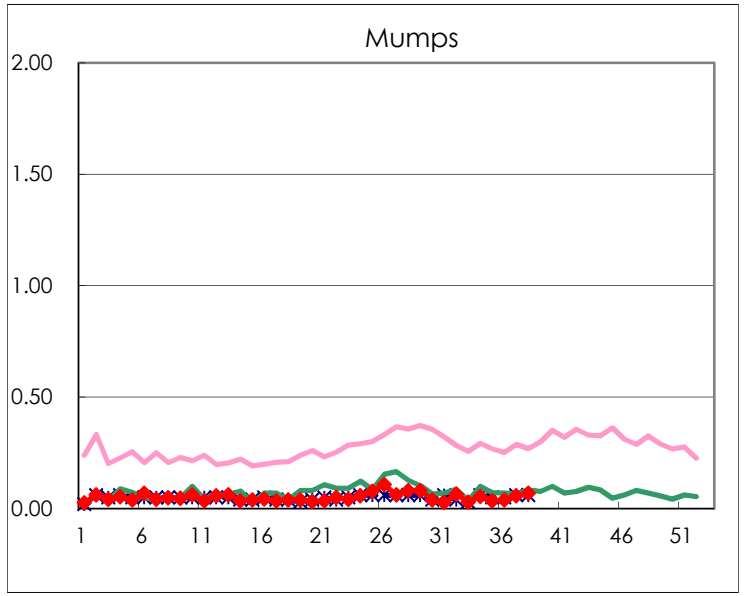
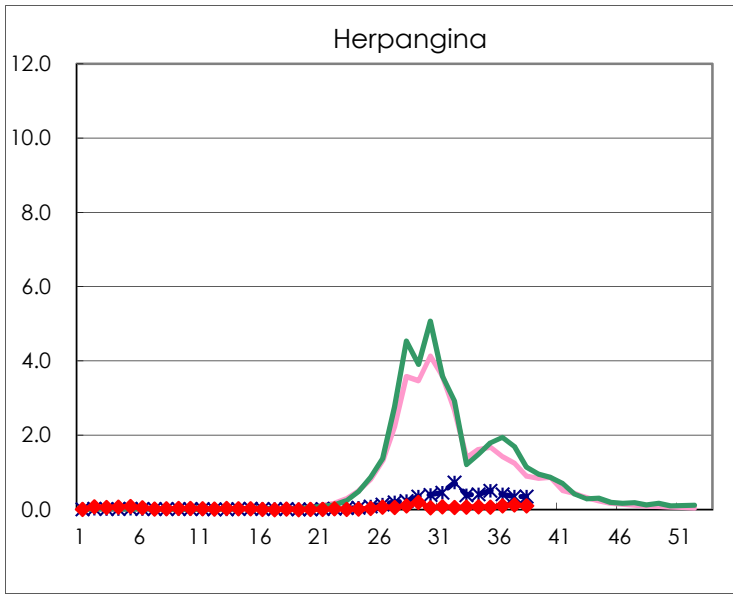
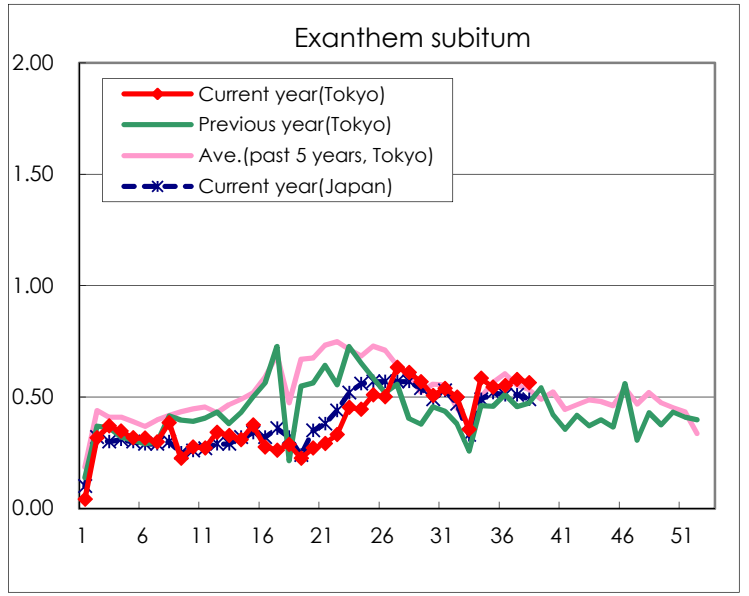
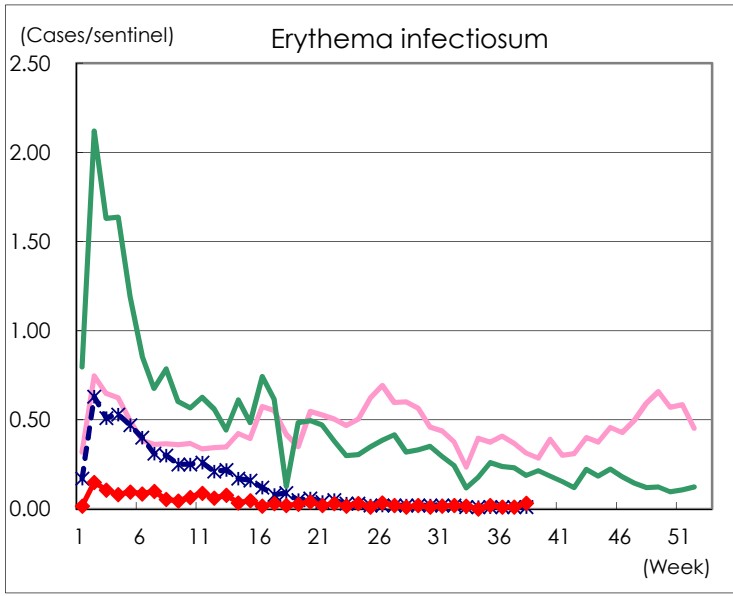
Number of patients with the diseases to be reported
by the designated clinics and hospitals

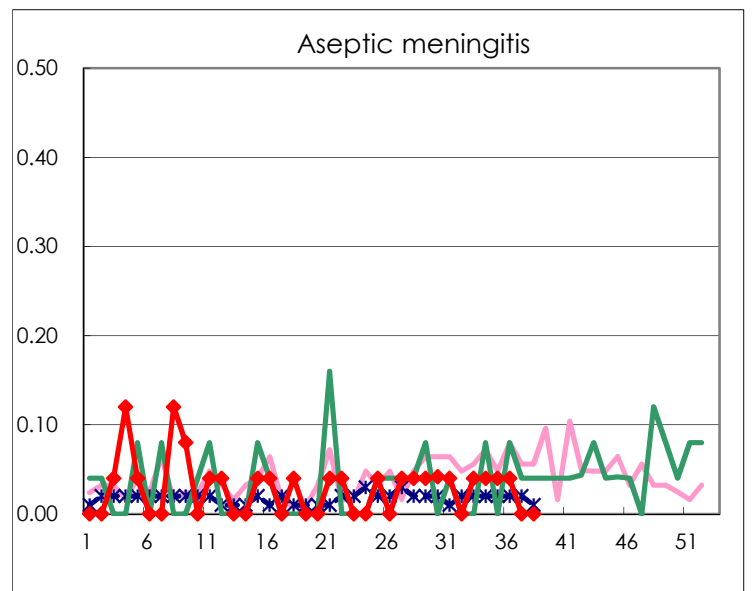
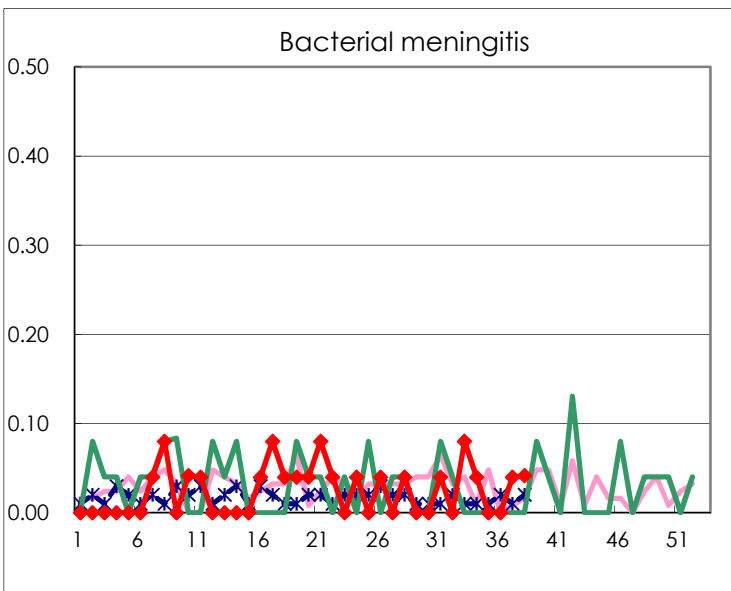
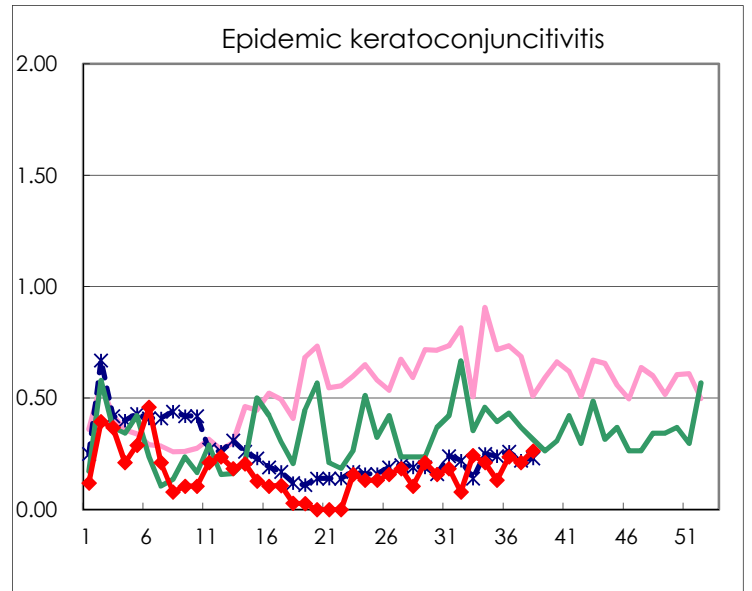
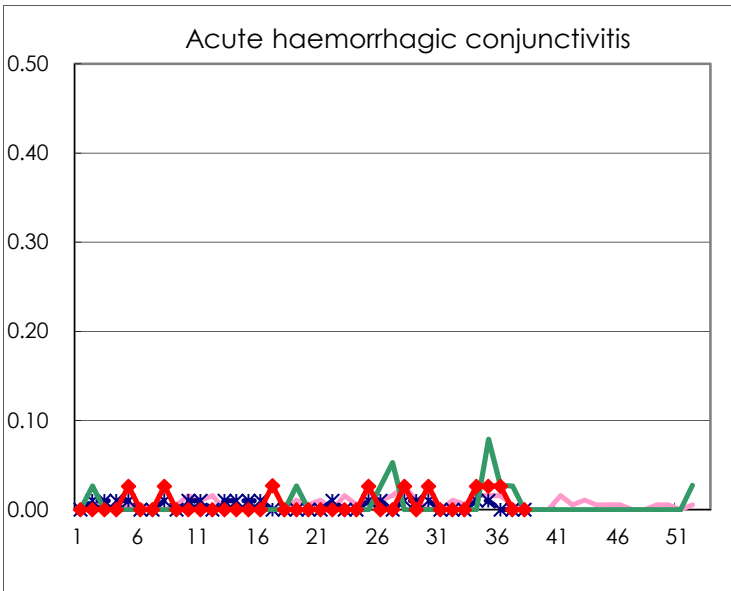
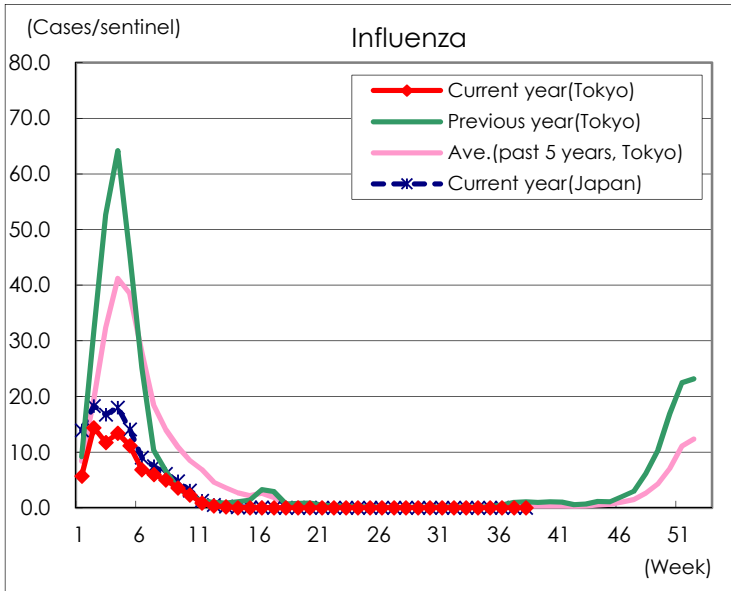
Diseases	Tokyo				
	35th	36th	37th	38th	/sentinel
Respiratory syncytial virus infection			3		
Pharyngoconjunctival fever	25	25	27	17	0.07
Group A streptococcal pharyngitis	74	97	107	113	0.46
Infectious gastroenteritis	535	598	588	548	2.23
Chickenpox	18	23	15	40	0.16
Hand, foot, and mouth disease	26	27	28	29	0.12
Erythema infectiosum	5	3	3	8	0.03
Exanthem subitum	141	143	150	139	0.57
Herpangina	18	28	33	25	0.10
Mumps	9	10	15	17	0.07
Kawasaki disease	4	1	3	2	0.01
Cold with exanthems	7	7	15	13	0.05
Influenza					
Acute hemorrhagic conjunctivitis	1	1			
Epidemic keratoconjunctivitis	5	9	8	10	0.26
Bacterial meningitis			1	1	0.04
Aseptic meningitis	1	1			
Mycoplasma pneumonia			2		
Chlamydial pneumonia (excluding psittacosis)					
Infectious gastroenteritis (only by Rotavirus)			2		
Influenza-Associated Hospitalizations					

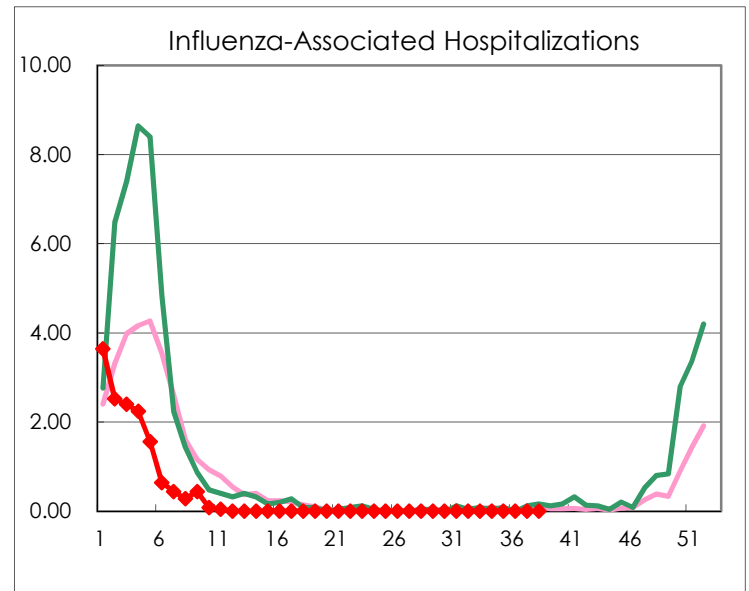
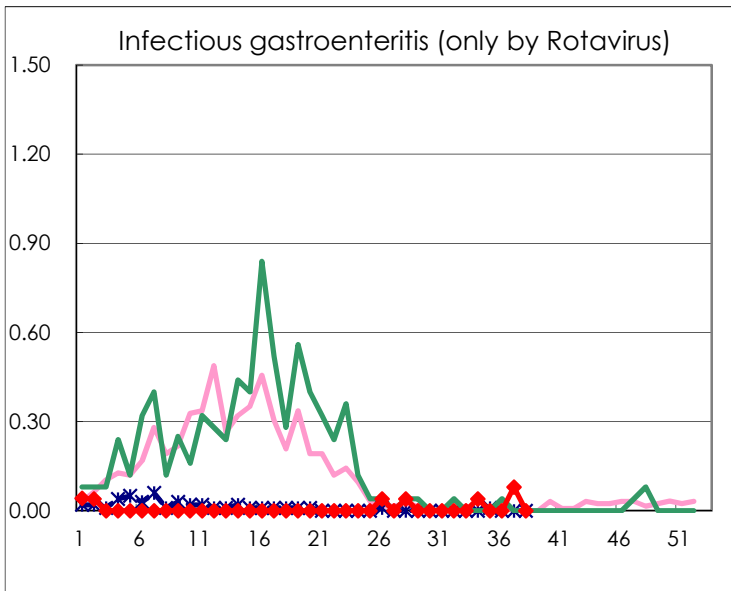
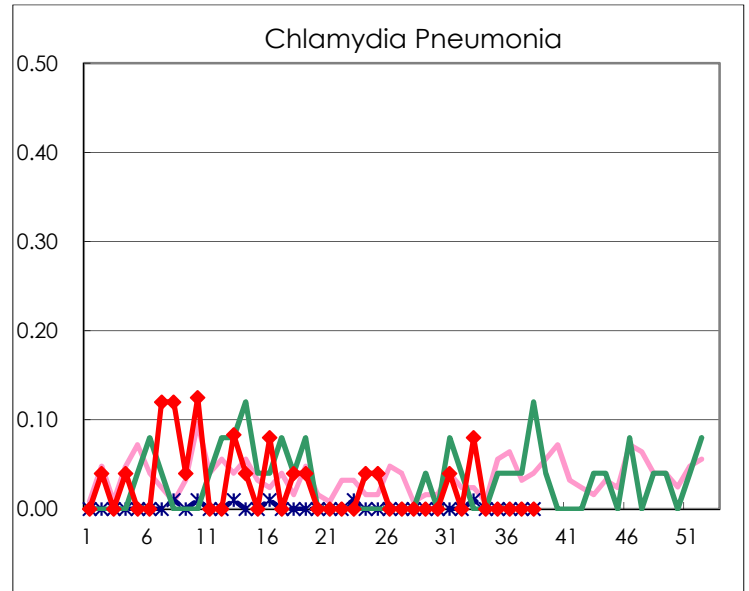
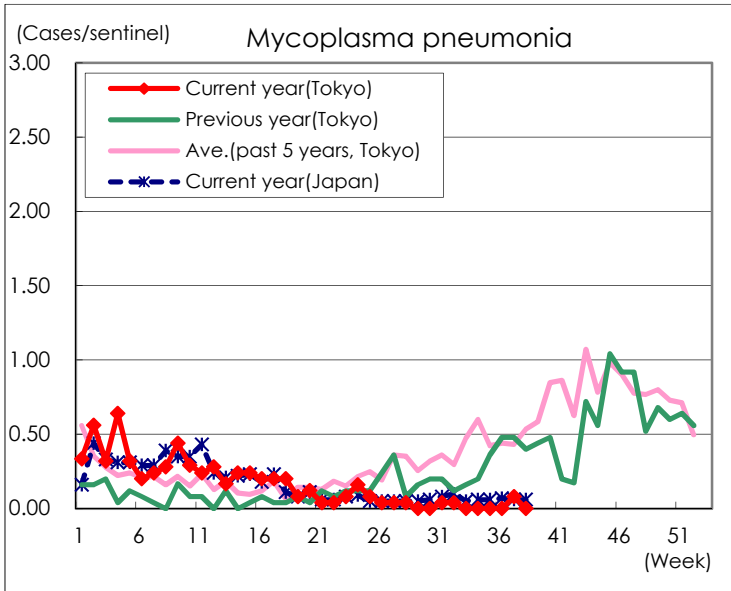
(Blank means 0.)

Disease Trend Graph (weekly reported cases per sentinel in comparison)









Number of sentinel facilities for weekly reporting		
Types of sentinels	Number of sentinels	Sentinels having reported
Pediatric	264	246
Influenza	419	393
Ophthalmic	39	38
Specially-designated	25	24