

**8 October 2020 / Number 40**

**( 9/28 ~ 10/4 )**

### Surveillance System in Tokyo, Japan

The infectious diseases which all physicians must report

All physicians must report to health centers the incidence of the diseases which are shown at page one. Health centers electronically report the individual cases to Tokyo Metropolitan Infectious Disease Surveillance Center.

The infectious diseases required to be reported by the sentinels

The numbers of patients who visit the sentinel clinics or hospitals during a week are reported to health centers in Tokyo. And they electronically report the numbers to Tokyo Metropolitan Infectious Disease Surveillance Center. We have about 500 sentinel clinics and hospitals in Tokyo.

Tokyo Metropolitan Institute of Public Health

TEL:81-3-3363-3213 FAX:81-3-5332-7365

e-mail:[www@tokyo-eiken.go.jp](mailto:www@tokyo-eiken.go.jp)

URL:[idsc.tokyo-eiken.go.jp/](http://idsc.tokyo-eiken.go.jp/)

---

Number of patients with the diseases which all physicians must report

Category	Diseases	Tokyo					Japan		
		37th	38th	39th	40th	Cum 2020	40th	Cum 2020	
I	Ebola hemorrhagic fever								
	Crimean-Congo hemorrhagic fever								
	Smallpox								
	South American hemorrhagic fever								
	Plague								
	Marburg disease								
	Lassa fever								
II	Acute poliomyelitis								
	Tuberculosis	57	46	22	59	1,852	296	12,976	
	Diphtheria								
	Severe Acute Respiratory Syndrome(SARS)								
	Middle East Respiratory Syndrome (MERS)								
	Avian influenza H5N1								
	Avian influenza H7N9								
※	Novel Coronavirus 2019 infection								
III	Cholera							1	
	Shigellosis					11	2	59	
	Enterohemorrhagic Escherichia coli infection	15	23	10	23	256	114	2,307	
	Typhoid fever					2		21	
	Paratyphoid fever					1		7	
IV	Hepatitis E		1	1	2	88	12	331	
	West Nile fever								
	Hepatitis A					20	3	103	
	Echinococcosis							14	
	Yellow fever								
	Psittacosis							5	
	Omsk hemorrhagic fever								
	Relapsing fever							13	
	Kyasanur forest disease								
	Q fever								
	Rabies							1	
	Coccidioidomycosis					1		4	
	Monkeypox								
	Zika virus infection							1	
	Severe Fever with Thrombocytopenia Syndrome							2	59
	Hemorrhagic fever with renal syndrome								
	Western equine encephalitis								
	Tick-borne encephalitis								
	Anthrax								
	Chikungunya fever								3
	Scrub typhus(Tsutsugamushi disease)					6			113
	Dengue fever				1	13		1	42
	Eastern equine encephalitis								
	Avian influenza (excluding H5N1 and H7N9)								
	Nipah virus infection								
	Japanese spotted fever							31	286
	Japanese encephalitis							2	4
	Hantavirus pulmonary syndrome								
	Herpes B virus infection								
	Glanders								
	Brucellosis							1	2
	Venezuelan equine encephalitis								
	Hendra virus infection								
Epidemic typhus									
Botulism						1		4	
Malaria	1					6		19	
Tularemia									
Lyme disease						1	1	24	
Lyssavirus infection(excluding rabies)									
Rift valley fever									
Melioidosis									
Legionellosis	2	7	6	2	110		41	1,541	
Leptospirosis						1	2	5	
Rocky mountain spotted fever									

Category	Diseases	Tokyo				Japan		
		37th	38th	39th	40th	Cum 2020	40th	Cum 2020
V	Amebiasis	3				84	3	457
	Viral hepatitis(excluding hepatitis A and E)	2	2	1	1	50	2	189
	CRE infection	6	3		5	116	23	1,360
	Acute Flaccid Paralysis (excluding Acute poliomyelitis)					2		27
	Acute encephalitis(excluding JE and WNE)				1	28	5	408
	Cryptosporidiosis						1	6
	Creutzfeldt-Jakob disease				1	12	1	111
	Severe invasive streptococcal infections(TSLS)		2	3	1	80	5	591
	Acquired immunodeficiency syndrome (AIDS)	2	7	6	5	279	10	788
	Giardiasis			1		5		19
	Invasive <i>Haemophilus influenzae</i> disease					21	1	208
	Invasive meningococcal disease					2		13
	Invasive pneumococcal disease	2	1		2	122	13	1,230
	Varicella (limited to hospitalized case)	1	2		1	37	2	265
	Congenital rubella syndrome							1
	Syphilis	22	30	22	28	1,146	68	4,290
	Disseminated cryptococcosis					13		108
	Tetanus					5	5	85
	Vancomycin-resistant <i>S. aureus</i> infection							
	Vancomycin-resistant Enterococcus infection					6	3	99
Pertussis	5	3	1	3	247	18	2,751	
Rubella	1				23		90	
Measles					2	1	13	
MDRA infection							9	

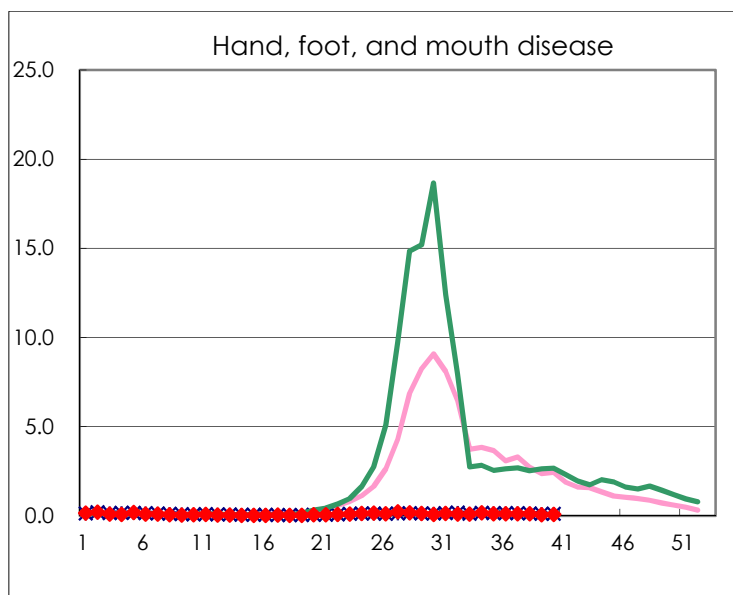
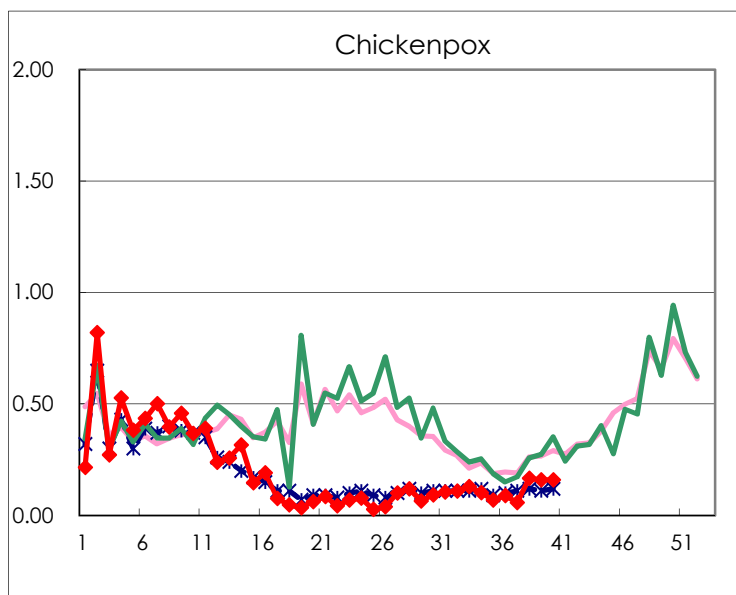
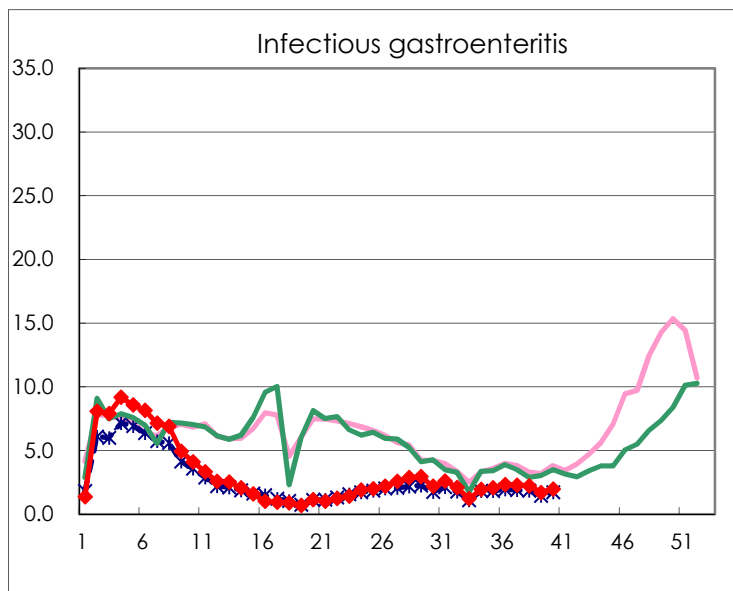
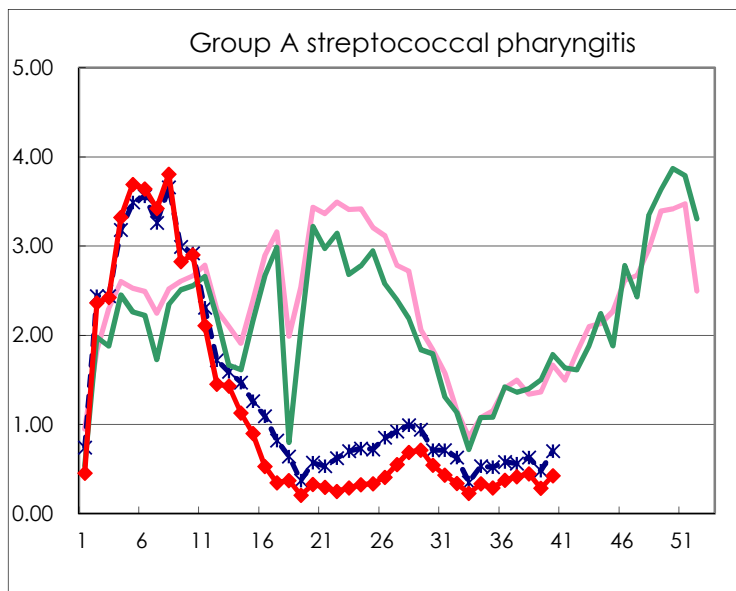
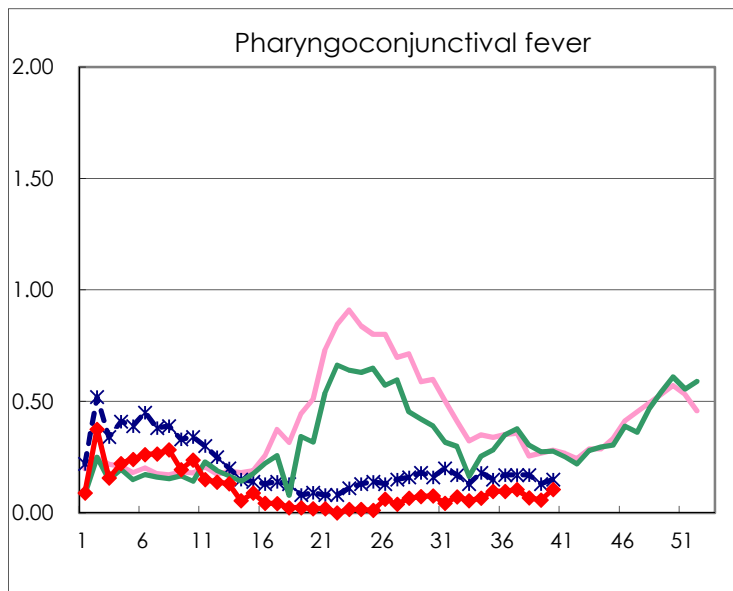
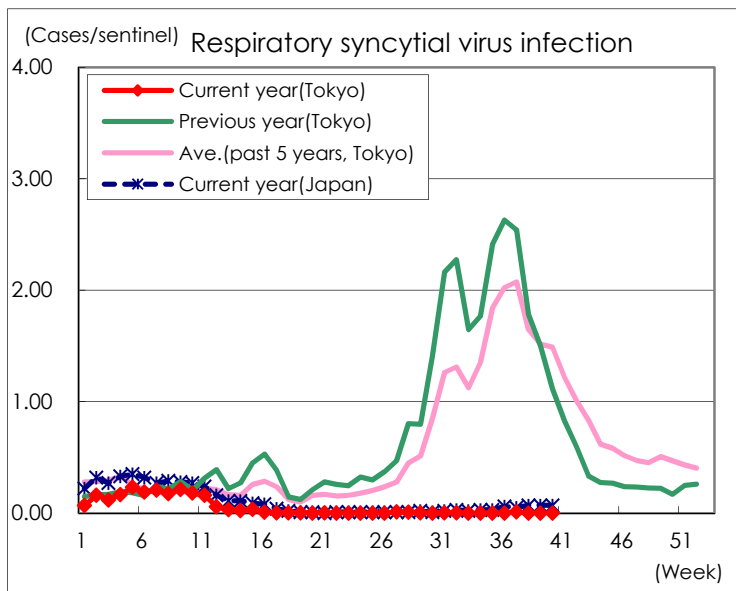
※ Designated infectious disease

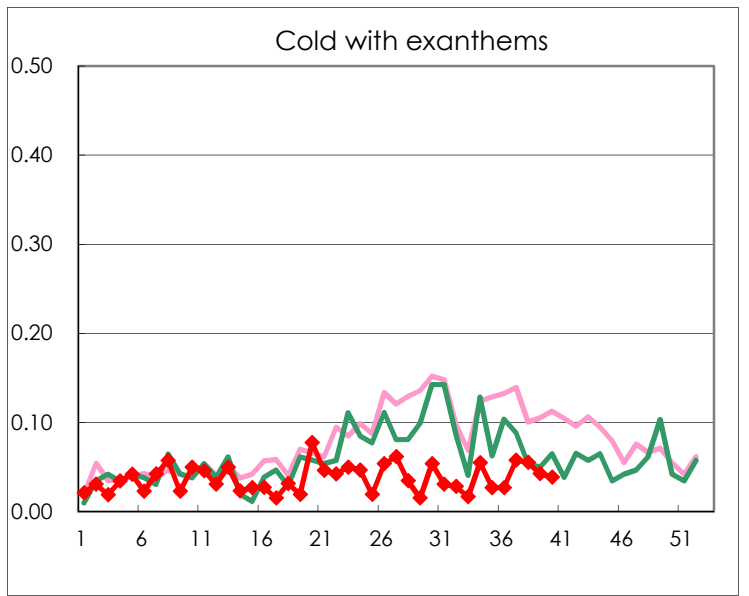
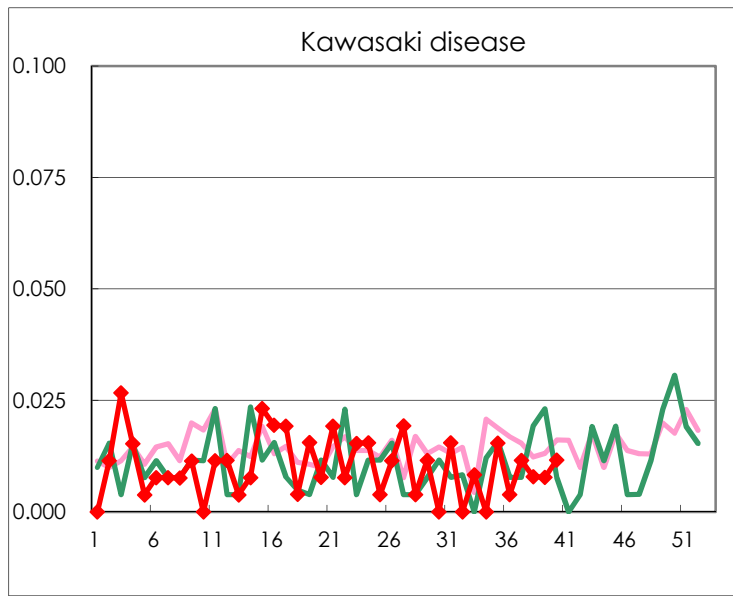
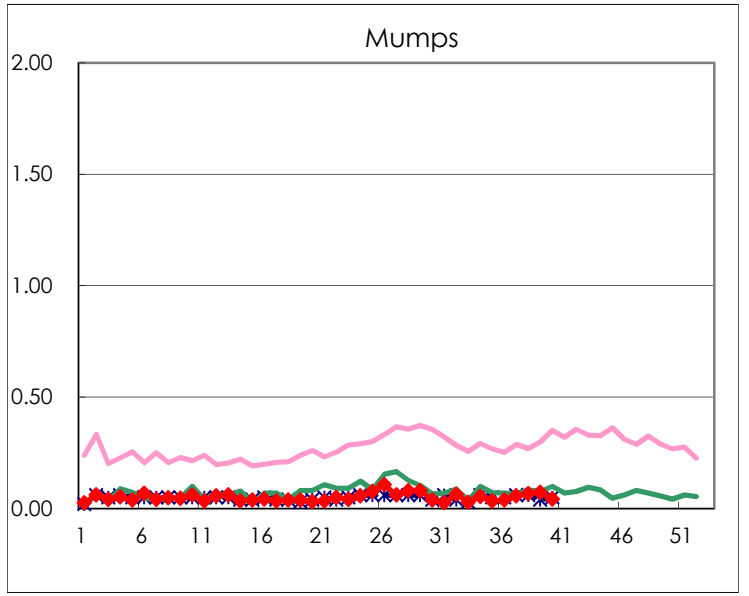
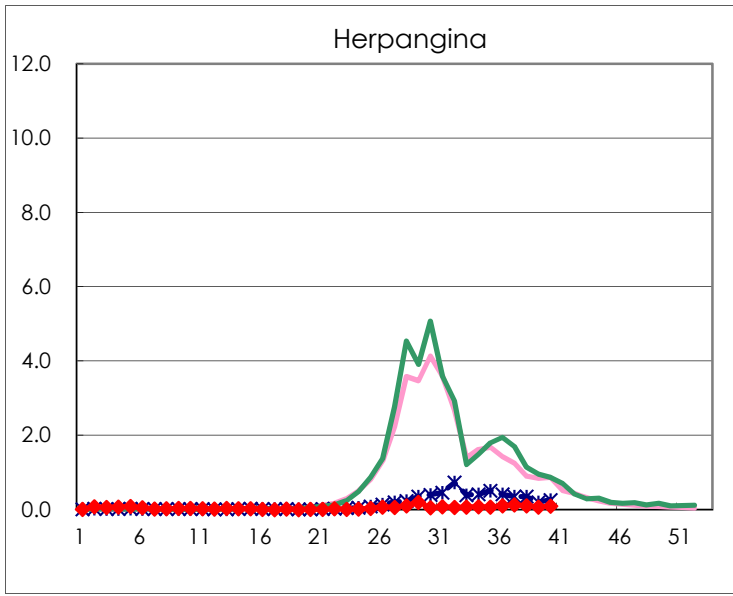
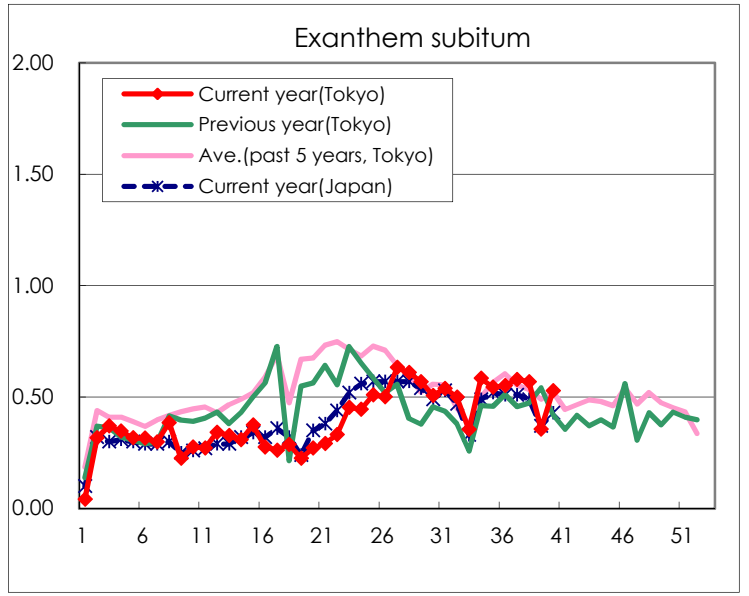
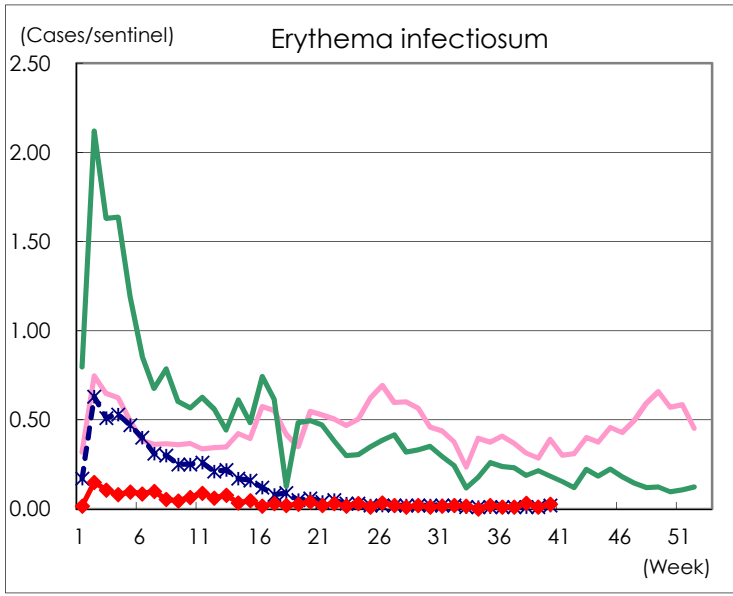
Number of patients with the diseases to be reported  
by the designated clinics and hospitals

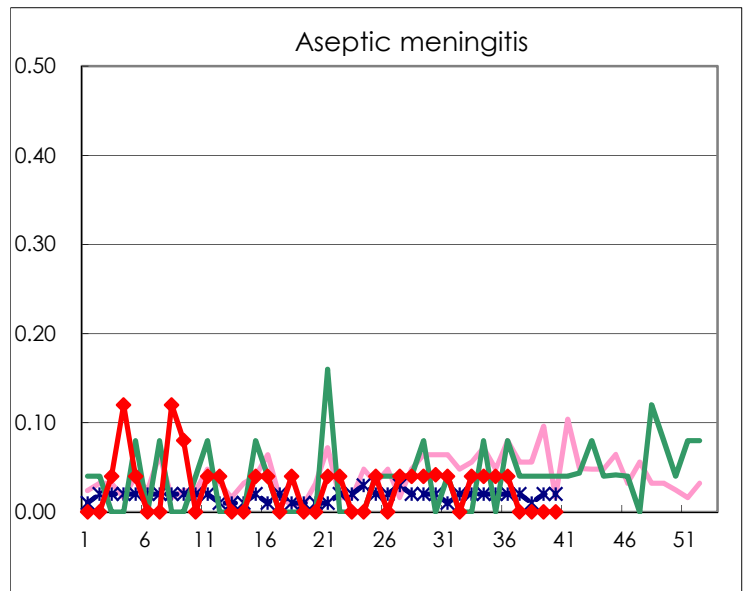
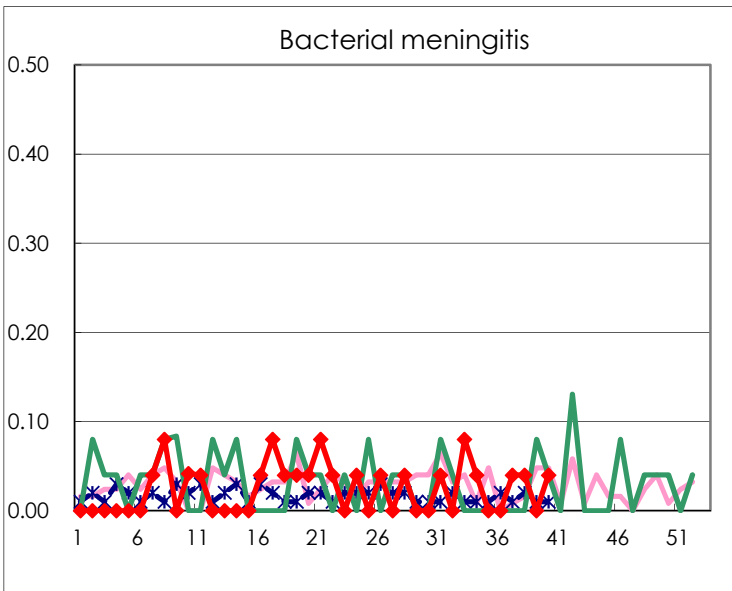
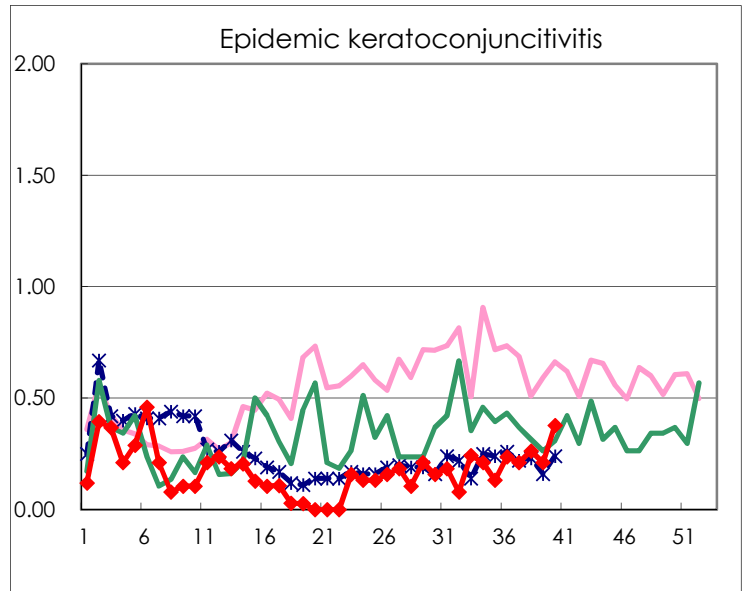
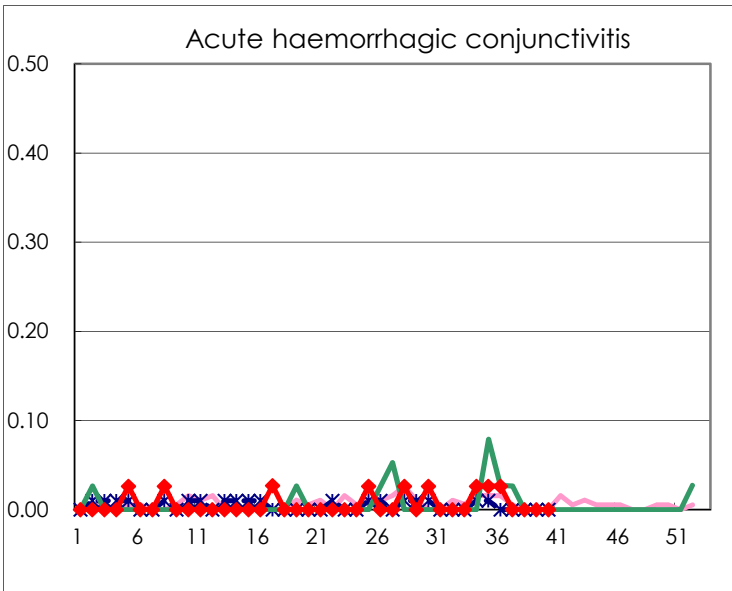
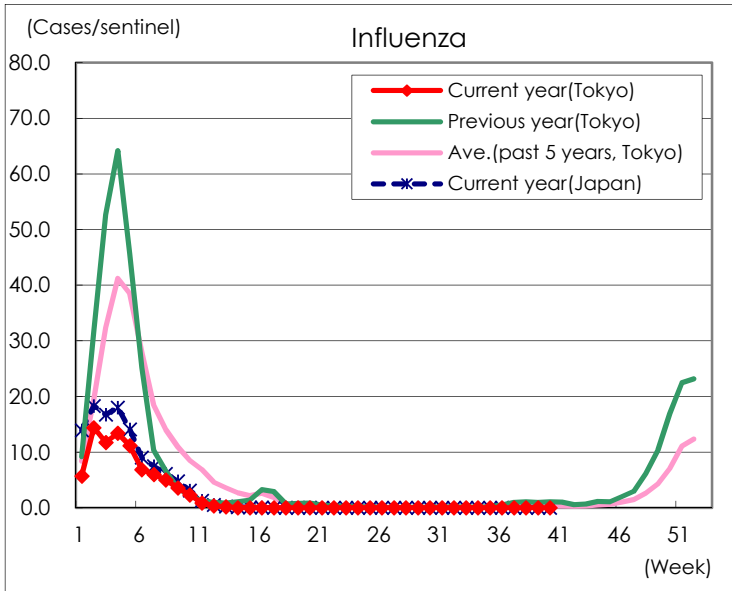
Diseases	Tokyo				
	37th	38th	39th	40th	/sentinel
Respiratory syncytial virus infection	3				
Pharyngoconjunctival fever	27	17	15	27	0.11
Group A streptococcal pharyngitis	107	113	73	109	0.42
Infectious gastroenteritis	588	561	438	506	1.97
Chickenpox	15	42	41	41	0.16
Hand, foot, and mouth disease	28	29	12	19	0.07
Erythema infectiosum	3	8	3	7	0.03
Exanthem subitum	150	144	92	136	0.53
Herpangina	33	27	19	24	0.09
Mumps	15	17	19	11	0.04
Kawasaki disease	3	2	2	3	0.01
Cold with exanthems	15	14	11	10	0.04
Influenza					
Acute hemorrhagic conjunctivitis					
Epidemic keratoconjunctivitis	8	10	8	14	0.38
Bacterial meningitis	1	1		1	0.04
Aseptic meningitis					
Mycoplasma pneumonia	2				
Chlamydial pneumonia (excluding psittacosis)					
Infectious gastroenteritis (only by Rotavirus)	2				
Influenza-Associated Hospitalizations					

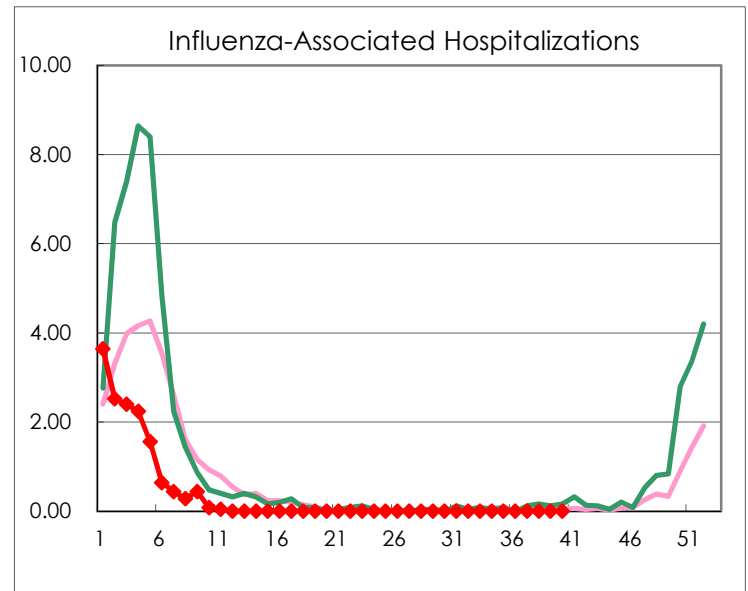
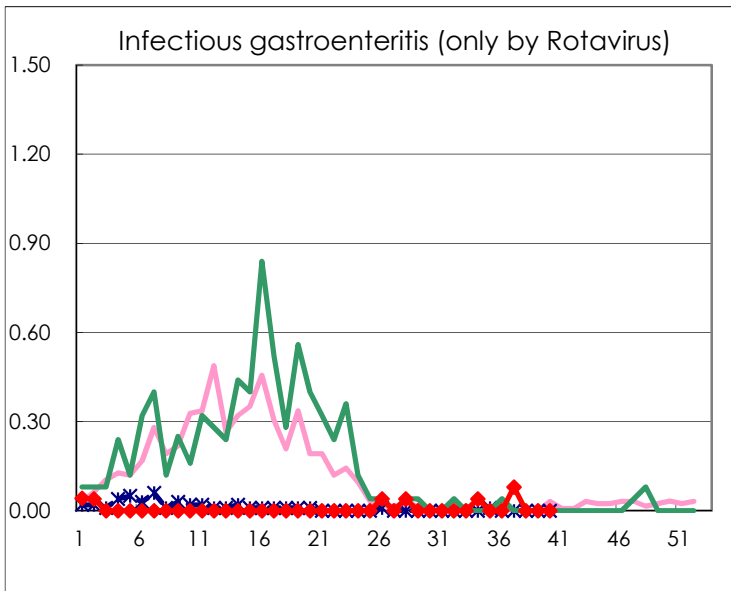
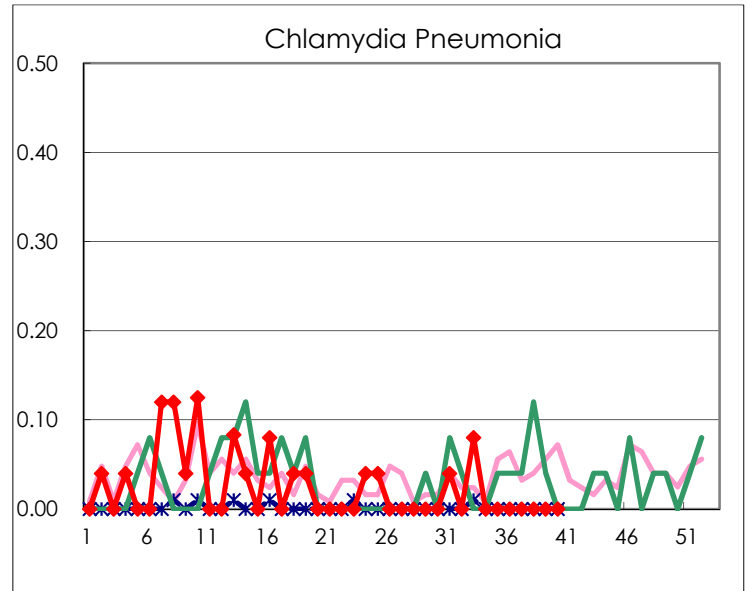
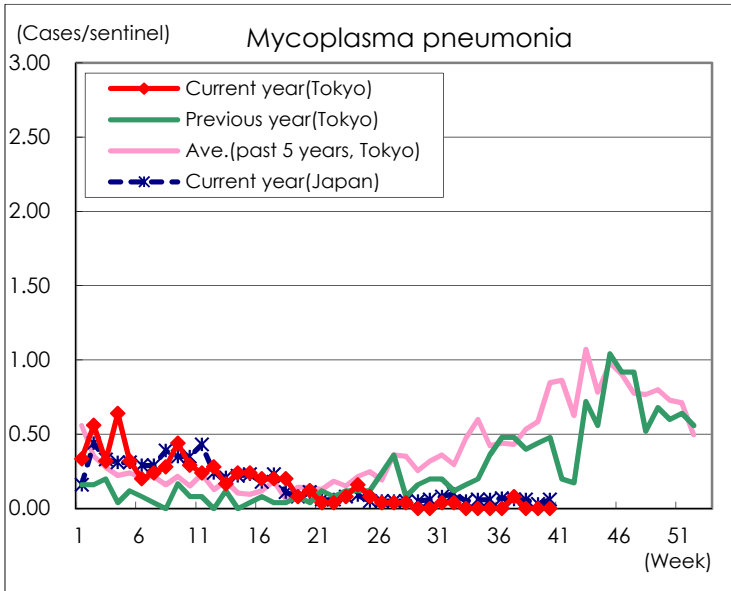
( Blank means 0. )

# Disease Trend Graph (weekly reported cases per sentinel in comparison)









Number of sentinel facilities for weekly reporting		
Types of sentinels	Number of sentinels	Sentinels having reported
Pediatric	264	257
Influenza	419	410
Ophthalmic	39	37
Specially-designated	25	25