

15 October 2020 / Number 41

(10/5 ~ 10/11)

Surveillance System in Tokyo, Japan

The infectious diseases which all physicians must report

All physicians must report to health centers the incidence of the diseases which are shown at page one. Health centers electronically report the individual cases to Tokyo Metropolitan Infectious Disease Surveillance Center.

The infectious diseases required to be reported by the sentinels

The numbers of patients who visit the sentinel clinics or hospitals during a week are reported to health centers in Tokyo. And they electronically report the numbers to Tokyo Metropolitan Infectious Disease Surveillance Center. We have about 500 sentinel clinics and hospitals in Tokyo.

Tokyo Metropolitan Institute of Public Health

TEL:81-3-3363-3213 FAX:81-3-5332-7365

e-mail:www@tokyo-eiken.go.jp

URL:idsc.tokyo-eiken.go.jp/

Number of patients with the diseases which all physicians must report

Category	Diseases	Tokyo					Japan	
		38th	39th	40th	41st	Cum 2020	41st	Cum 2020
I	Ebola hemorrhagic fever							
	Crimean-Congo hemorrhagic fever							
	Smallpox							
	South American hemorrhagic fever							
	Plague							
	Marburg disease							
	Lassa fever							
II	Acute poliomyelitis							
	Tuberculosis	48	23	61	46	1,906	269	13,330
	Diphtheria							
	Severe Acute Respiratory Syndrome(SARS)							
	Middle East Respiratory Syndrome (MERS)							
	Avian influenza H5N1							
	Avian influenza H7N9							
※	Novel Coronavirus 2019 infection							
III	Cholera							1
	Shigellosis					11		59
	Enterohemorrhagic Escherichia coli infection	23	11	23	14	271	88	2,418
	Typhoid fever					2		21
	Paratyphoid fever					1		7
IV	Hepatitis E	1	1	2	2	90	10	344
	West Nile fever							
	Hepatitis A					20		103
	Echinococcosis							14
	Yellow fever							
	Psittacosis							5
	Omsk hemorrhagic fever							
	Relapsing fever							13
	Kyasanur forest disease							
	Q fever							
	Rabies							1
	Coccidioidomycosis					1		4
	Monkeypox							
	Zika virus infection							1
	Severe Fever with Thrombocytopenia Syndrome						2	62
	Hemorrhagic fever with renal syndrome							
	Western equine encephalitis							
	Tick-borne encephalitis							
	Anthrax							
	Chikungunya fever							3
	Scrub typhus(Tsutsugamushi disease)					6	1	116
	Dengue fever			1		13		42
	Eastern equine encephalitis							
	Avian influenza (excluding H5N1 and H7N9)							
	Nipah virus infection							
	Japanese spotted fever						23	312
	Japanese encephalitis							4
	Hantavirus pulmonary syndrome							
	Herpes B virus infection							
	Glanders							
	Brucellosis							2
	Venezuelan equine encephalitis							
	Hendra virus infection							
Epidemic typhus								
Botulism					1		4	
Malaria					6		19	
Tularemia								
Lyme disease					1		24	
Lyssavirus infection(excluding rabies)								
Rift valley fever								
Melioidosis								
Legionellosis	7	6	2	5	115	59	1,609	
Leptospirosis				1	2	1	6	
Rocky mountain spotted fever								

Category	Diseases	Tokyo				Japan		
		38th	39th	40th	41st	Cum 2020	41st	Cum 2020
V	Amebiasis	1			4	89	9	474
	Viral hepatitis(excluding hepatitis A and E)	2	1	1		50	4	194
	CRE infection	3		5	1	117	27	1,406
	Acute Flaccid Paralysis (excluding Acute poliomyelitis)					2		27
	Acute encephalitis(excluding JE and WNE)			1		28		410
	Cryptosporidiosis							6
	Creutzfeldt-Jakob disease			1	1	13	2	114
	Severe invasive streptococcal infections(TSLS)	2	4	1	2	83	6	602
	Acquired immunodeficiency syndrome (AIDS)	7	7	6	13	294	15	817
	Giardiasis		1		1	6	2	21
	Invasive <i>Haemophilus influenzae</i> disease					21	5	213
	Invasive meningococcal disease					2		13
	Invasive pneumococcal disease	1		2		122	9	1,247
	Varicella (limited to hospitalized case)	2		1	1	38	4	273
	Congenital rubella syndrome							1
	Syphilis	31	23	28	24	1,172	66	4,412
	Disseminated cryptococcosis					13	1	110
	Tetanus				1	6		87
	Vancomycin-resistant <i>S. aureus</i> infection							
	Vancomycin-resistant Enterococcus infection					6	2	103
Pertussis	3	1	3	5	252	11	2,764	
Rubella				1	24	1	92	
Measles					2		12	
MDRA infection							9	

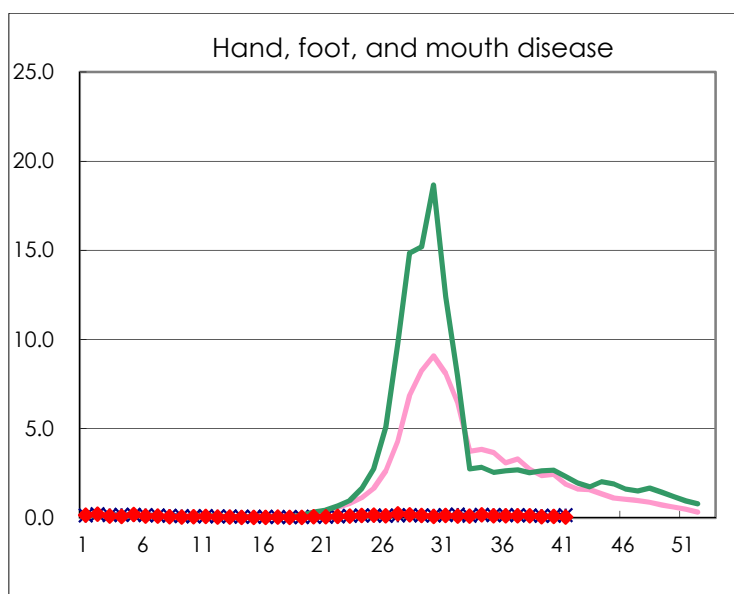
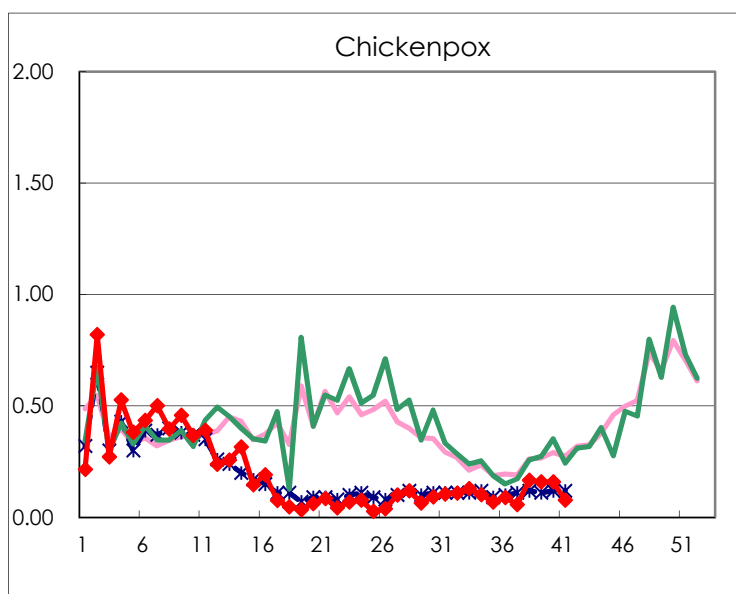
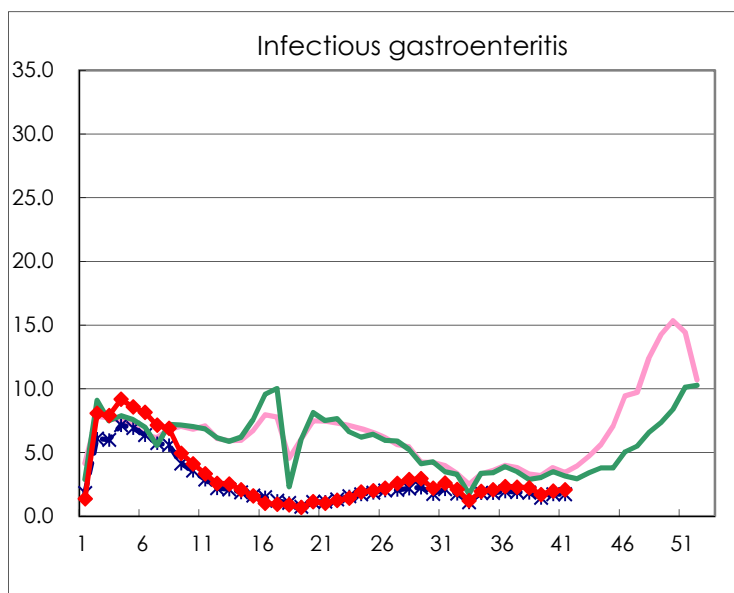
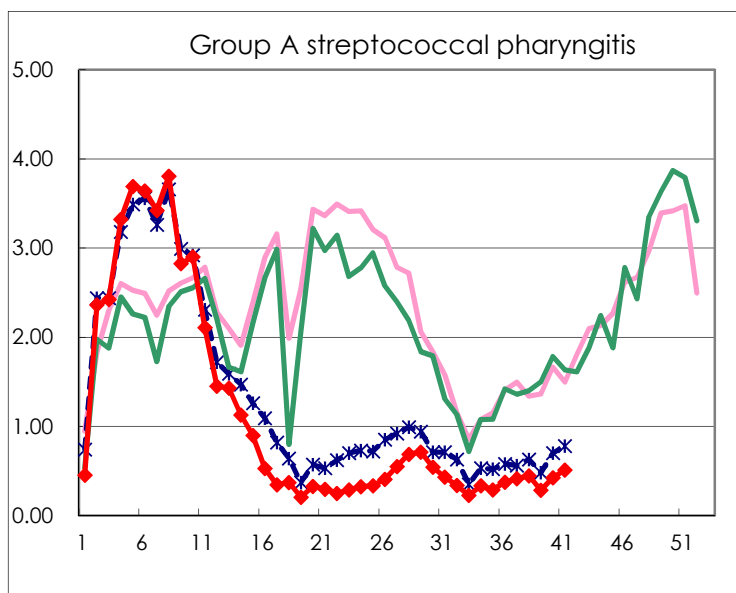
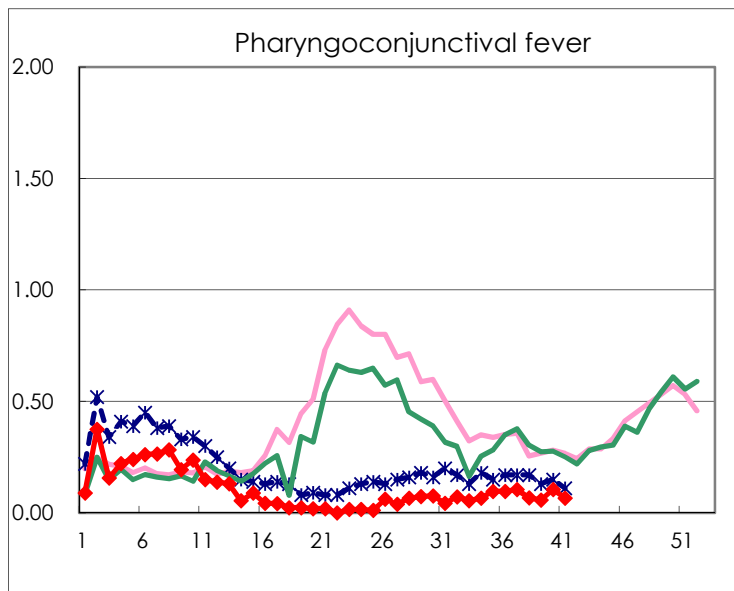
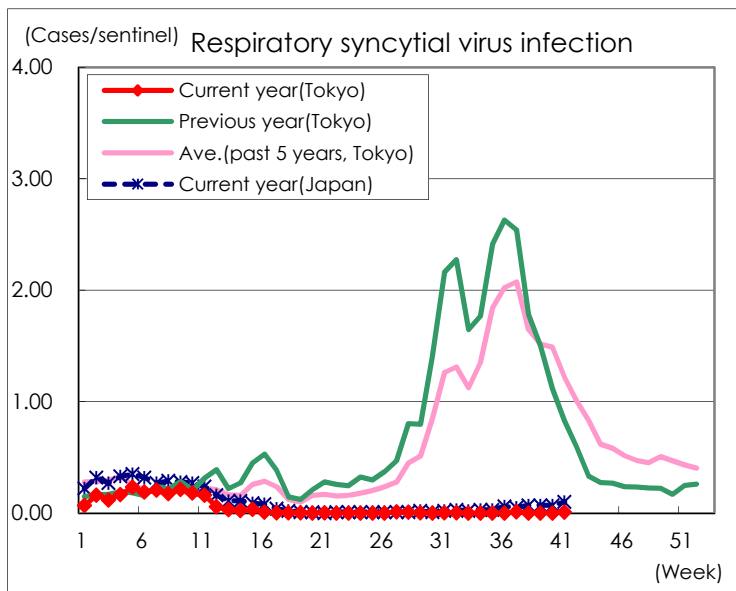
※ Designated infectious disease

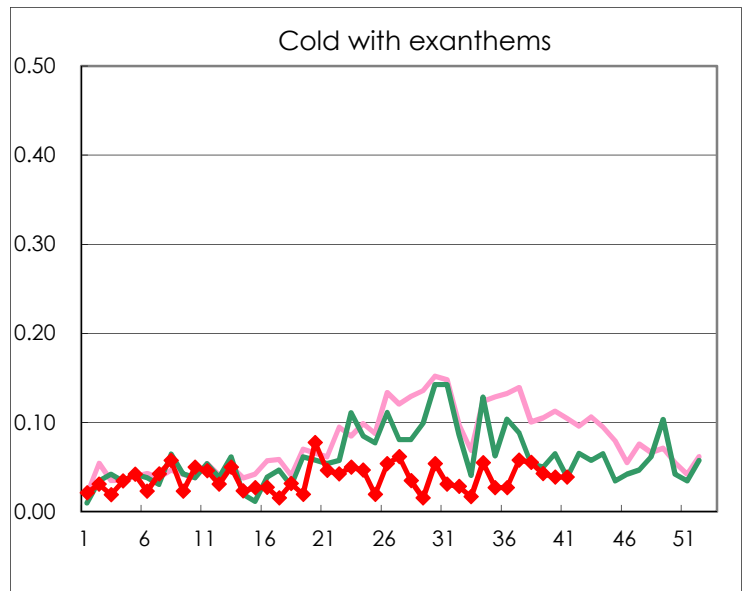
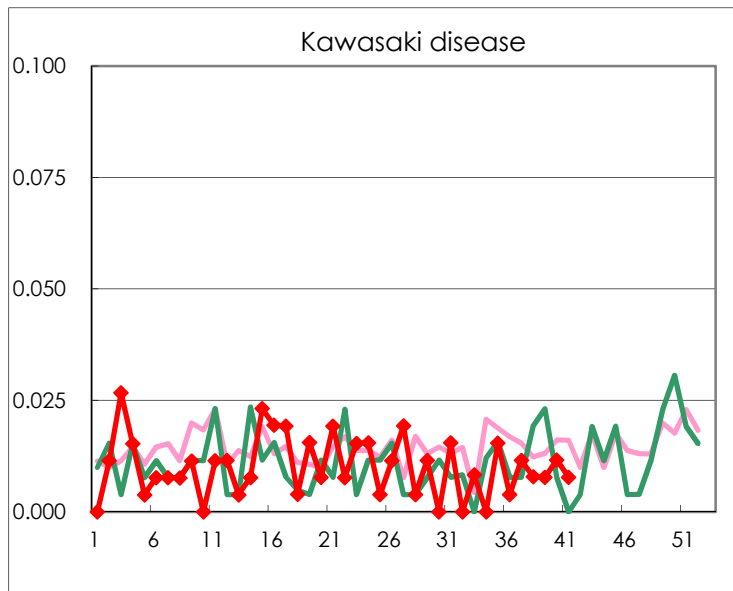
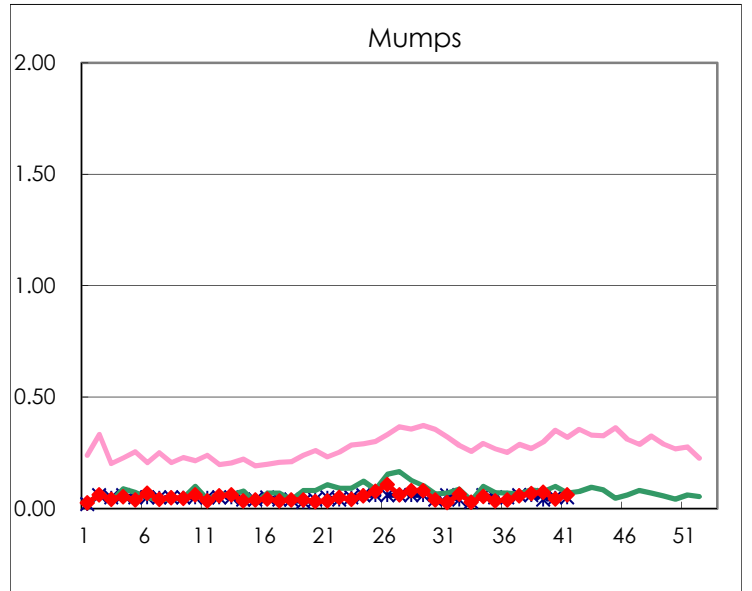
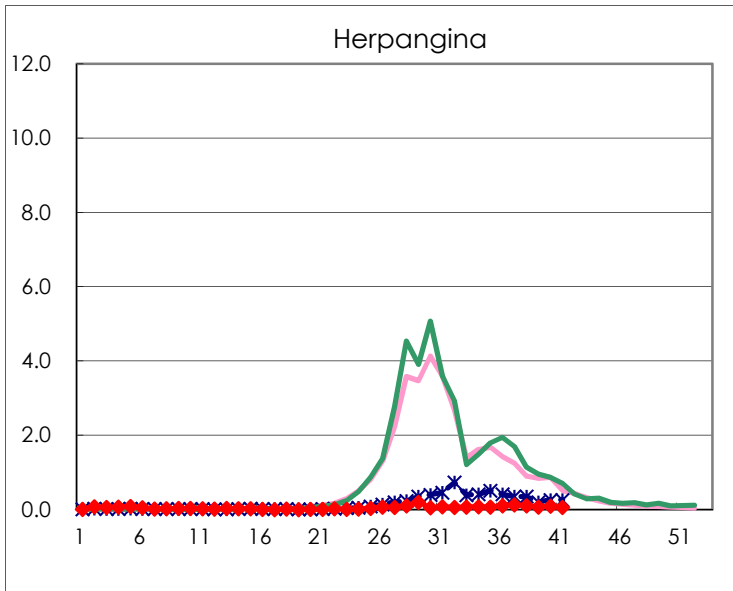
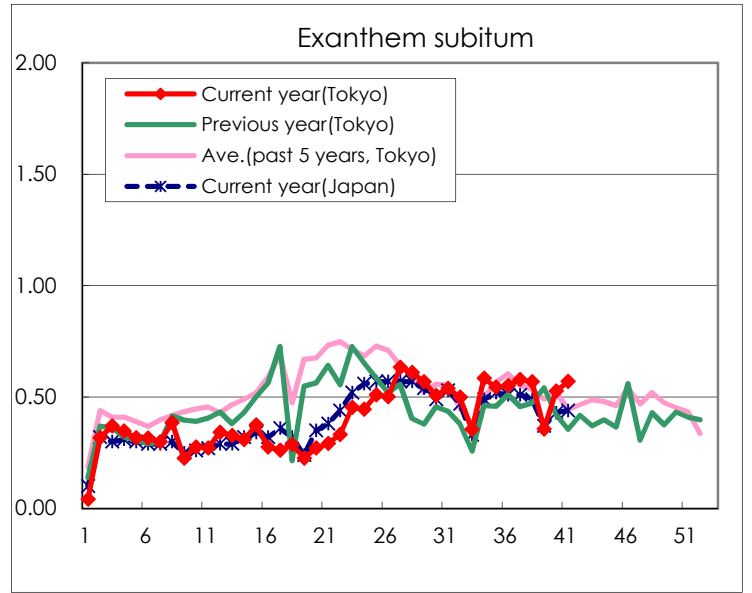
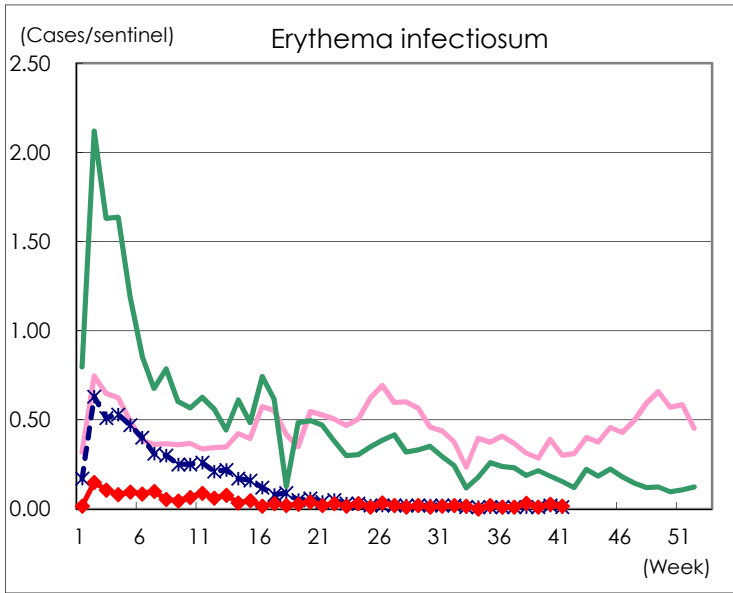
Number of patients with the diseases to be reported
by the designated clinics and hospitals

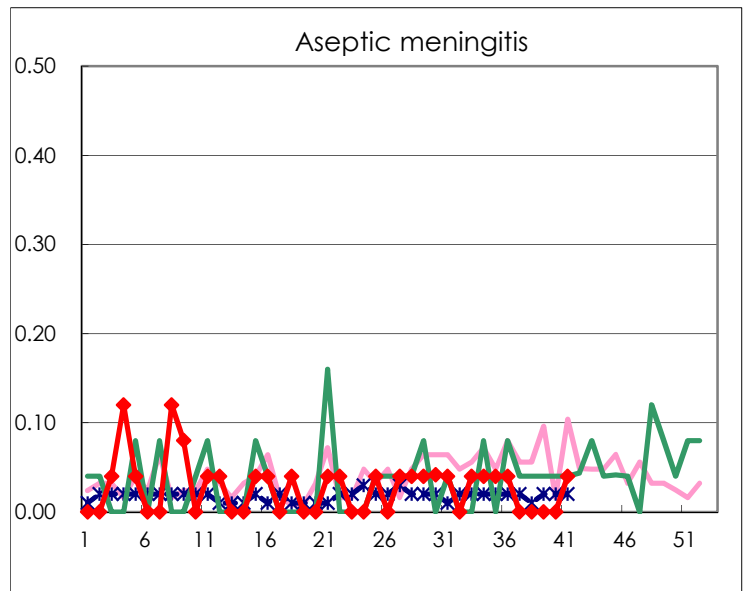
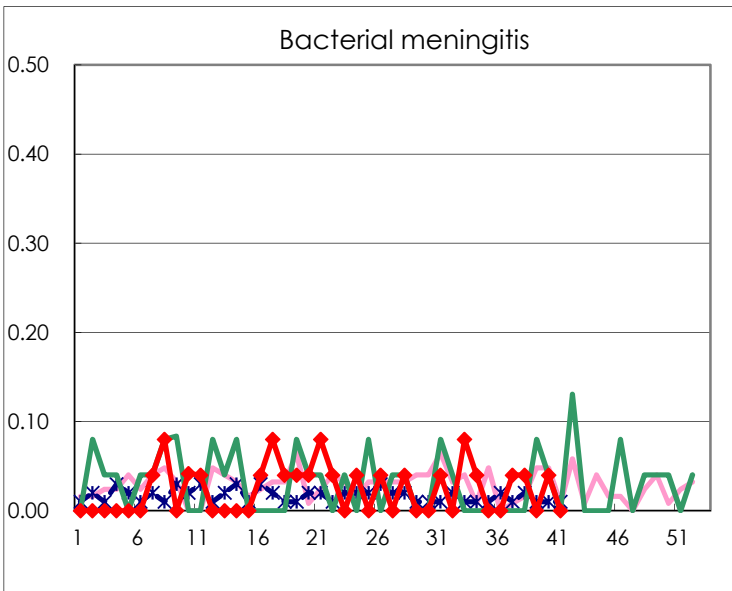
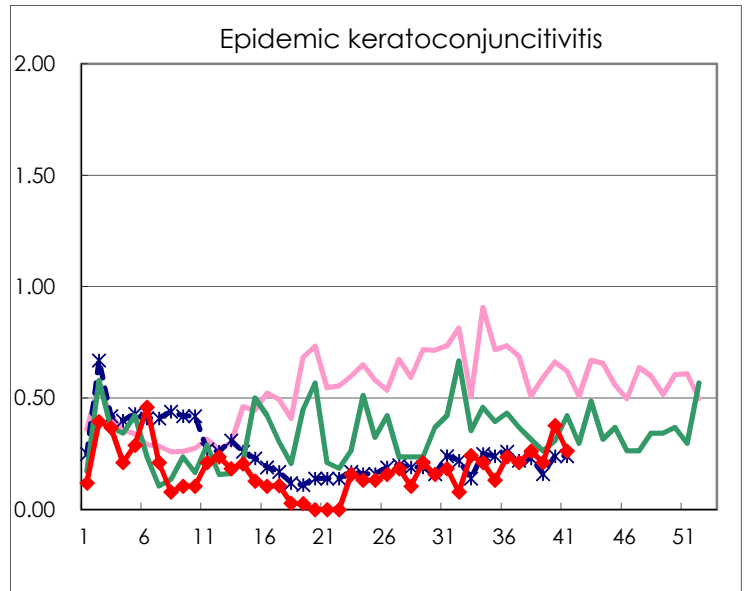
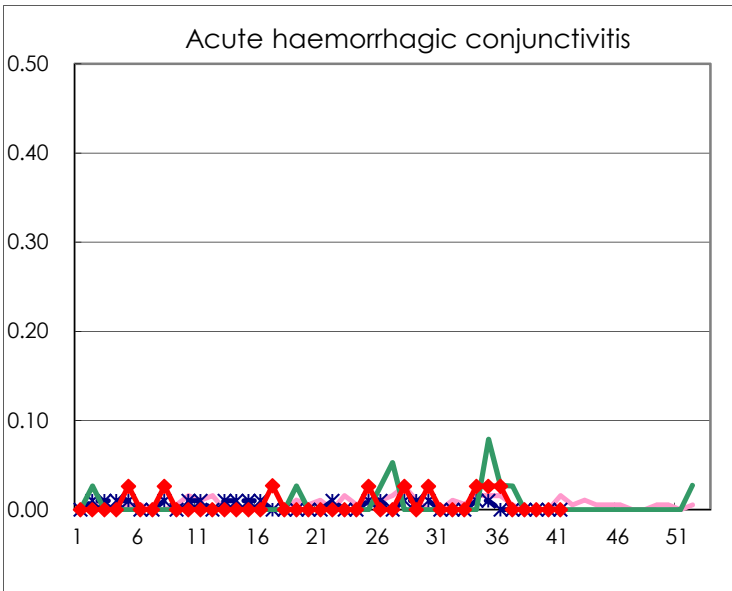
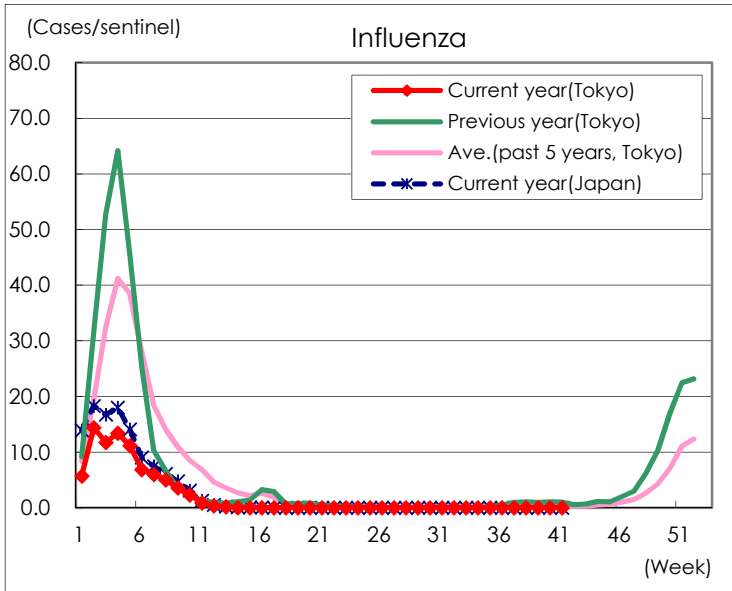
Diseases	Tokyo				
	38th	39th	40th	41st	/sentinel
Respiratory syncytial virus infection				2	0.01
Pharyngoconjunctival fever	17	15	27	17	0.07
Group A streptococcal pharyngitis	113	73	109	132	0.51
Infectious gastroenteritis	561	438	507	529	2.05
Chickenpox	42	41	41	20	0.08
Hand, foot, and mouth disease	29	12	20	10	0.04
Erythema infectiosum	8	3	7	4	0.02
Exanthem subitum	144	92	136	147	0.57
Herpangina	27	19	24	16	0.06
Mumps	17	19	11	16	0.06
Kawasaki disease	2	2	3	2	0.01
Cold with exanths	14	11	10	10	0.04
Influenza				1	
Acute hemorrhagic conjunctivitis					
Epidemic keratoconjunctivitis	10	8	14	10	0.26
Bacterial meningitis	1		1		
Aseptic meningitis				1	0.04
Mycoplasma pneumonia					
Chlamydial pneumonia (excluding psittacosis)					
Infectious gastroenteritis (only by Rotavirus)					
Influenza-Associated Hospitalizations					

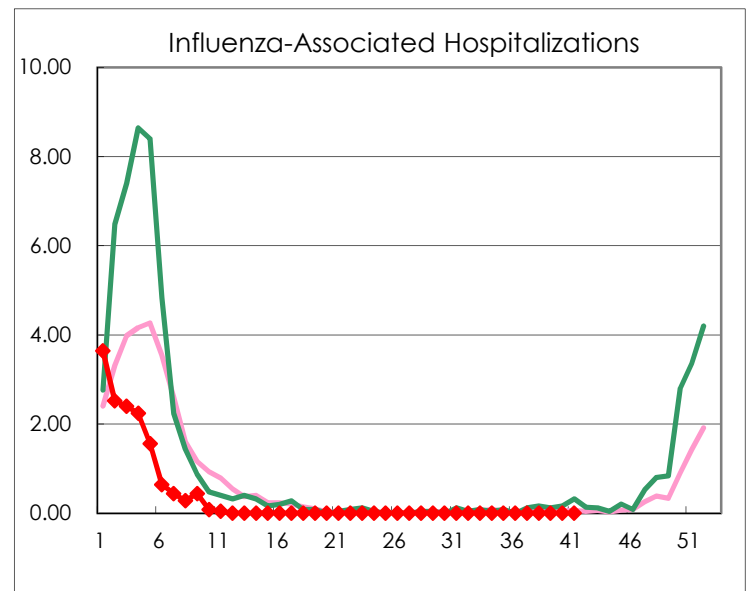
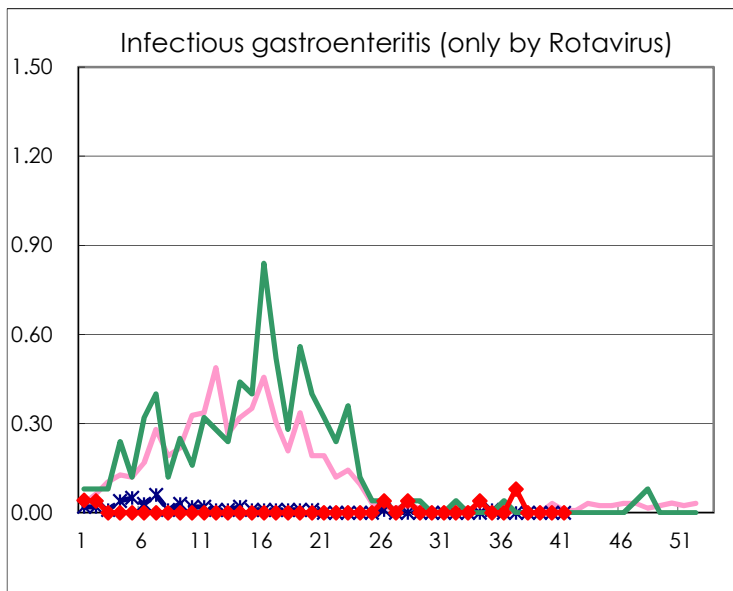
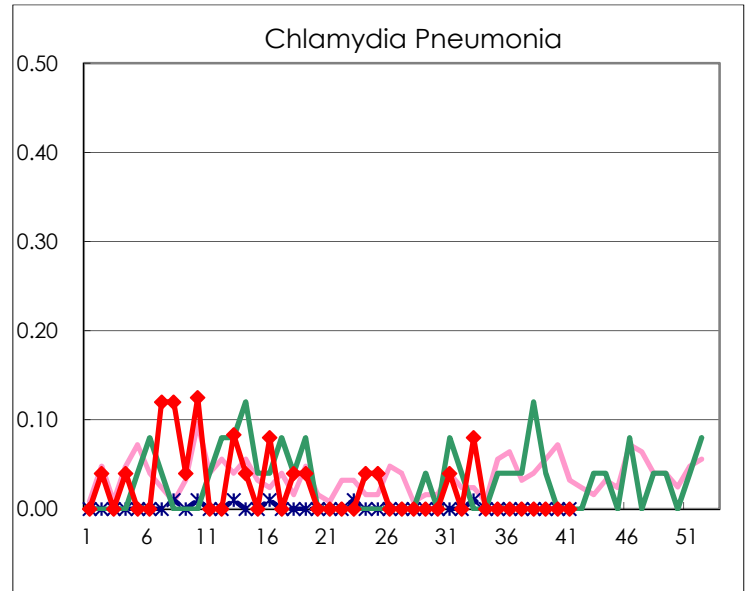
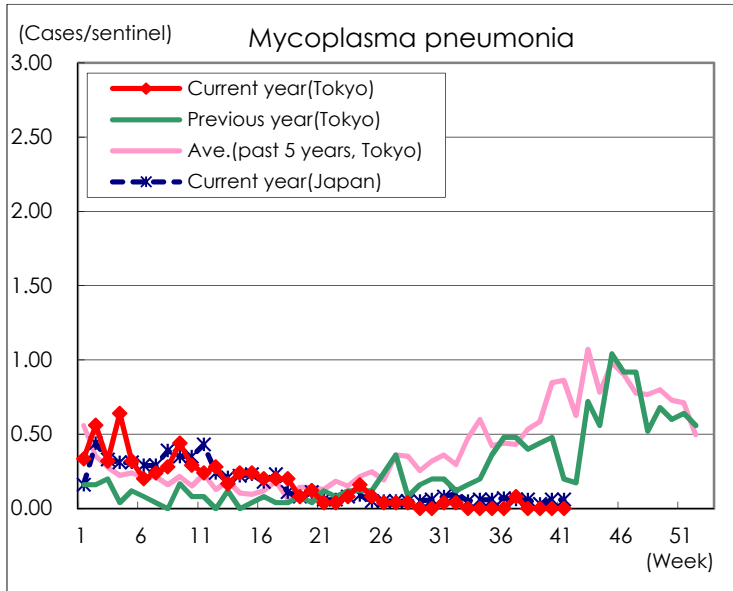
(Blank means 0.)

Disease Trend Graph (weekly reported cases per sentinel in comparison)









Number of sentinel facilities for weekly reporting		
Types of sentinels	Number of sentinels	Sentinels having reported
Pediatric	264	258
Influenza	419	409
Ophthalmic	39	38
Specially-designated	25	25