

29 October 2020 / Number 43
(10/19 ~ 10/25)

Surveillance System in Tokyo, Japan

The infectious diseases which all physicians must report

All physicians must report to health centers the incidence of the diseases which are shown at page one. Health centers electronically report the individual cases to Tokyo Metropolitan Infectious Disease Surveillance Center.

The infectious diseases required to be reported by the sentinels

The numbers of patients who visit the sentinel clinics or hospitals during a week are reported to health centers in Tokyo. And they electronically report the numbers to Tokyo Metropolitan Infectious Disease Surveillance Center. We have about 500 sentinel clinics and hospitals in Tokyo.

Tokyo Metropolitan Institute of Public Health

TEL:81-3-3363-3213 FAX:81-3-5332-7365

e-mail:www@tokyo-eiken.go.jp

URL:idsc.tokyo-eiken.go.jp/

Number of patients with the diseases which all physicians must report

Category	Diseases	Tokyo					Japan	
		40th	41st	42nd	43rd	Cum 2020	43rd	Cum 2020
I	Ebola hemorrhagic fever							
	Crimean-Congo hemorrhagic fever							
	Smallpox							
	South American hemorrhagic fever							
	Plague							
	Marburg disease							
	Lassa fever							
II	Acute poliomyelitis							
	Tuberculosis	59	55	45	49	2,007	286	14,092
	Diphtheria							
	Severe Acute Respiratory Syndrome(SARS)							
	Middle East Respiratory Syndrome (MERS)							
	Avian influenza H5N1							
	Avian influenza H7N9							
※	Novel Coronavirus 2019 infection							
III	Cholera							1
	Shigellosis					11	1	60
	Enterohemorrhagic Escherichia coli infection	23	15	7	10	289	90	2,618
	Typhoid fever					2		21
	Paratyphoid fever					1		7
IV	Hepatitis E	2	2	3		93	7	360
	West Nile fever							
	Hepatitis A				1	21	1	107
	Echinococcosis						1	16
	Yellow fever							
	Psittacosis							5
	Omsk hemorrhagic fever							
	Relapsing fever							14
	Kyasanur forest disease							
	Q fever							
	Rabies							1
	Coccidioidomycosis					1		4
	Monkeypox							
	Zika virus infection							1
	Severe Fever with Thrombocytopenia Syndrome						3	70
	Hemorrhagic fever with renal syndrome							
	Western equine encephalitis							
	Tick-borne encephalitis							
	Anthrax							
	Chikungunya fever							3
	Scrub typhus(Tsutsugamushi disease)					6	1	117
	Dengue fever	1				13		42
	Eastern equine encephalitis							
	Avian influenza (excluding H5N1 and H7N9)							
	Nipah virus infection							
	Japanese spotted fever						19	380
	Japanese encephalitis							4
	Hantavirus pulmonary syndrome							
	Herpes B virus infection							
	Glanders							
	Brucellosis							2
	Venezuelan equine encephalitis							
	Hendra virus infection							
Epidemic typhus								
Botulism					1		4	
Malaria					6	1	20	
Tularemia								
Lyme disease					1		24	
Lyssavirus infection(excluding rabies)								
Rift valley fever								
Melioidosis								
Legionellosis	2	5	3	3	121	51	1,723	
Leptospirosis		1			2		8	
	Rocky mountain spotted fever							

Category	Diseases	Tokyo					Japan	
		40th	41st	42nd	43rd	Cum 2020	43rd	Cum 2020
V	Amebiasis		4	3	1	93	11	500
	Viral hepatitis(excluding hepatitis A and E)	1			1	51	4	203
	CRE infection	5	1	6	5	128	26	1,501
	Acute Flaccid Paralysis (excluding Acute poliomyelitis)					2		28
	Acute encephalitis(excluding JE and WNE)	1				28	1	419
	Cryptosporidiosis							6
	Creutzfeldt-Jakob disease	1	1			13	2	122
	Severe invasive streptococcal infections(TSLS)	1	2			83	11	633
	Acquired immunodeficiency syndrome (AIDS)	7	13	9	6	312	8	866
	Giardiasis		1	2		8		22
	Invasive <i>Haemophilus influenzae</i> disease					21	5	221
	Invasive meningococcal disease					2		13
	Invasive pneumococcal disease	2	2	2	2	128	23	1,293
	Varicella (limited to hospitalized case)	1	1		2	40	1	284
	Congenital rubella syndrome							1
	Syphilis	29	26	31	27	1,234	62	4,639
	Disseminated cryptococcosis					13	3	120
	Tetanus		1	1		7	1	90
	Vancomycin-resistant <i>S. aureus</i> infection							
	Vancomycin-resistant Enterococcus infection					6	3	110
Pertussis	3	4	1		252	4	2,780	
Rubella		1			24		92	
Measles					2		13	
MDRA infection						1	10	

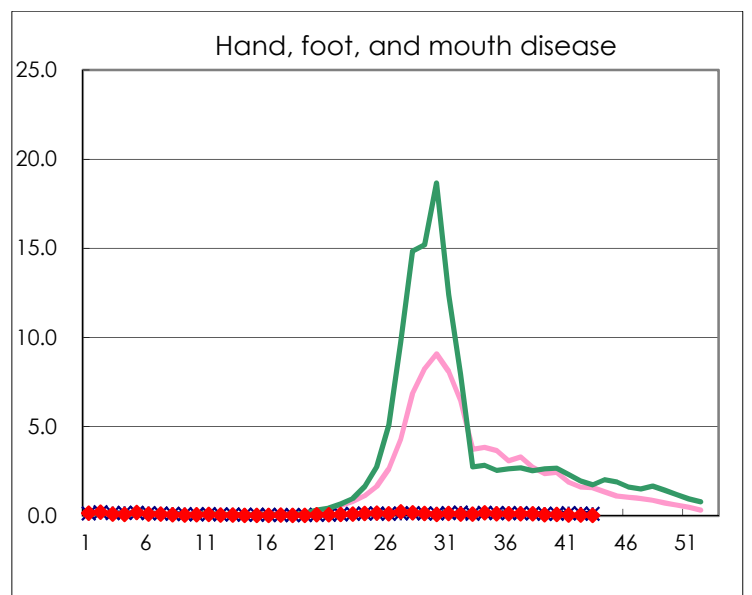
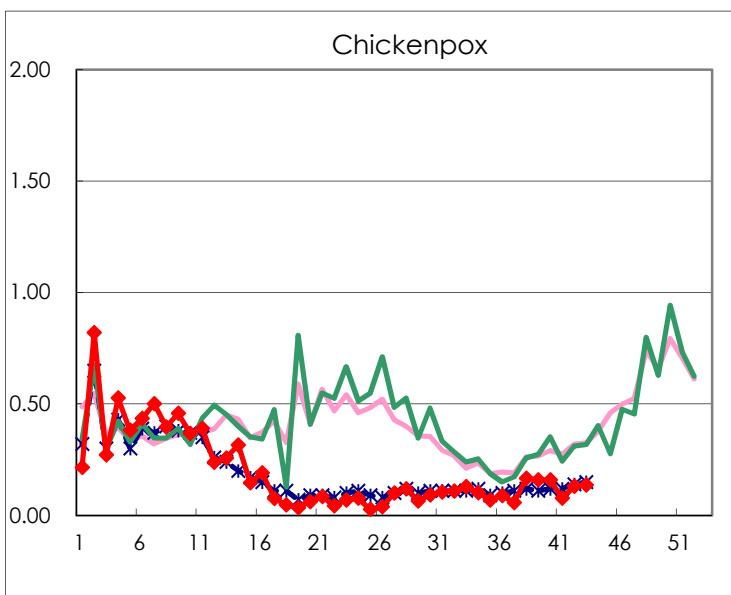
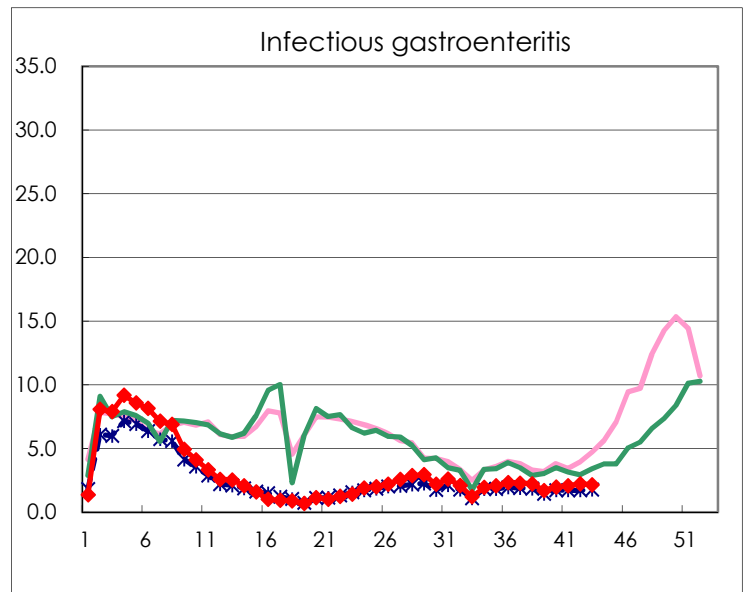
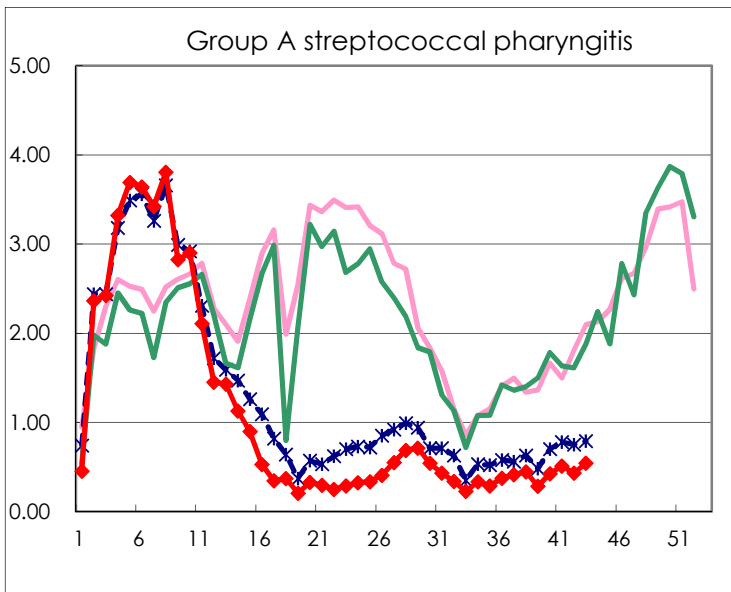
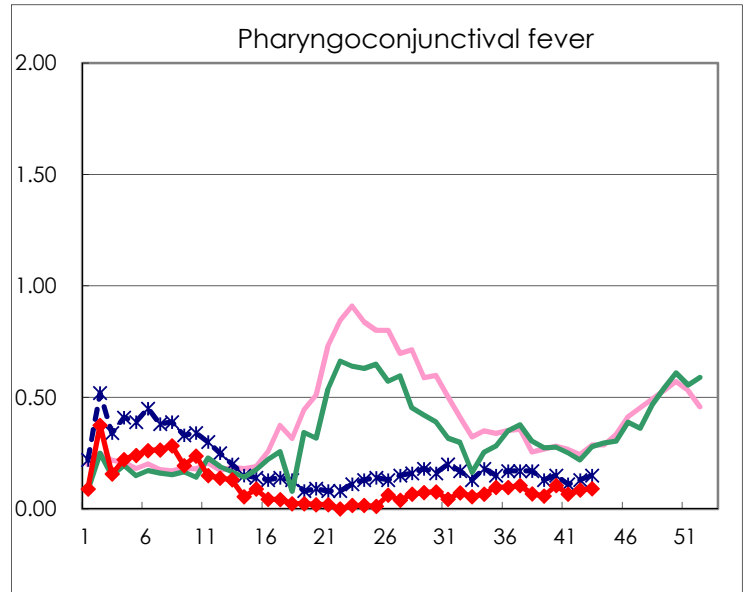
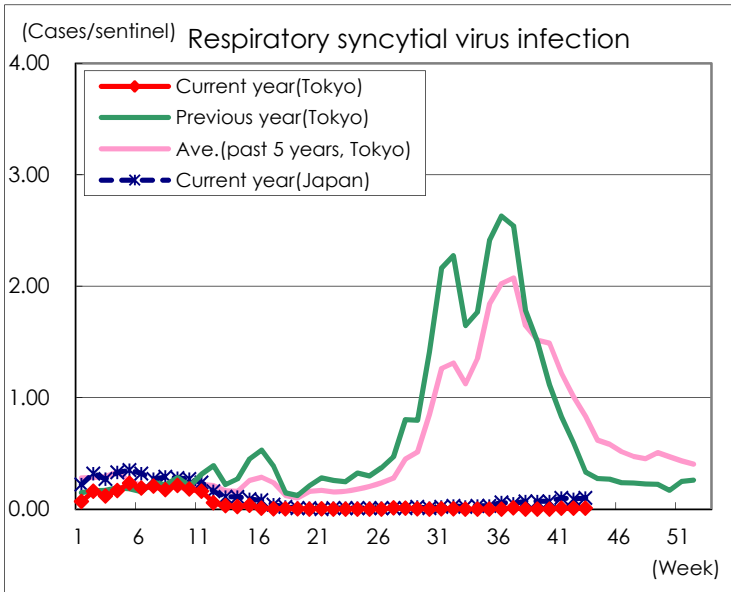
※ Designated infectious disease

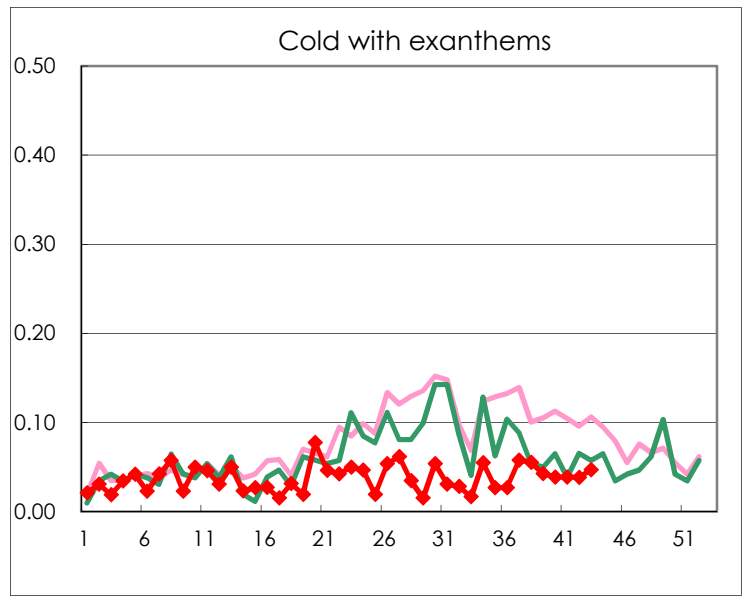
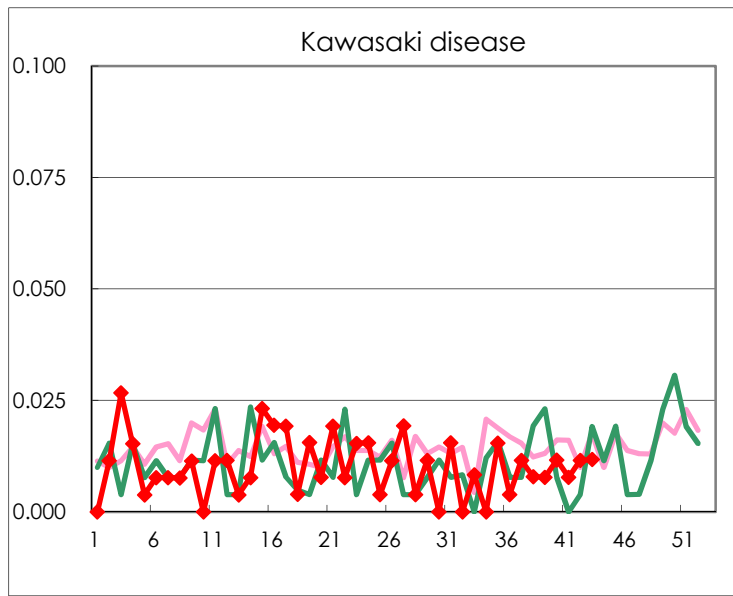
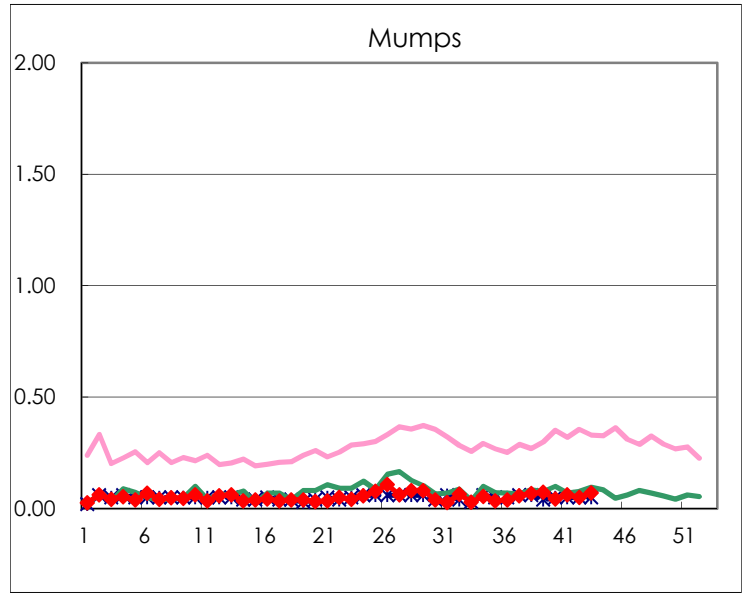
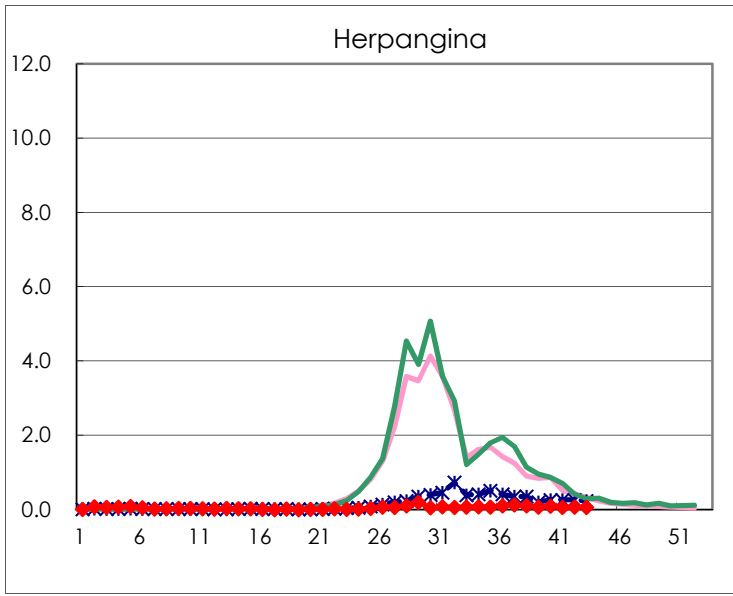
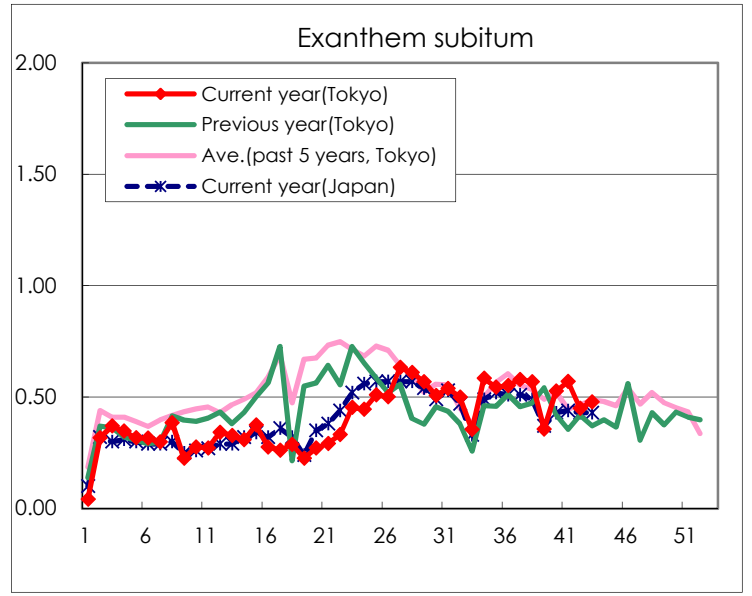
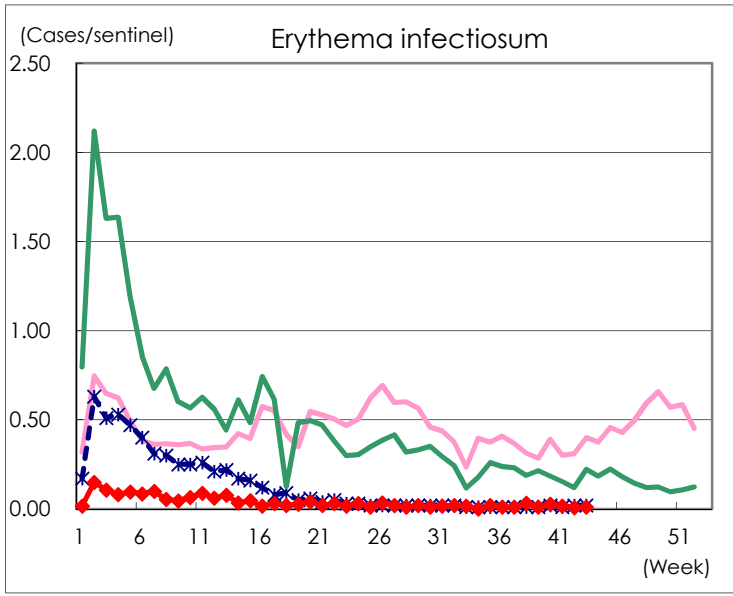
Number of patients with the diseases to be reported
by the designated clinics and hospitals

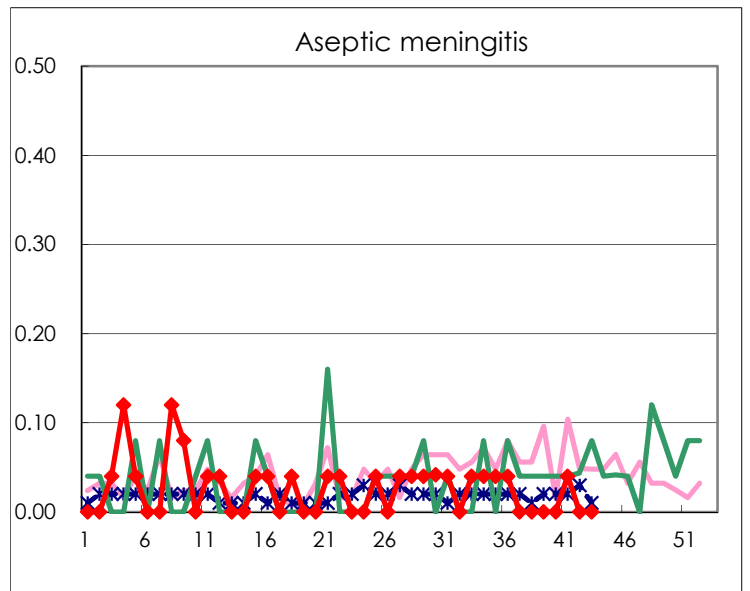
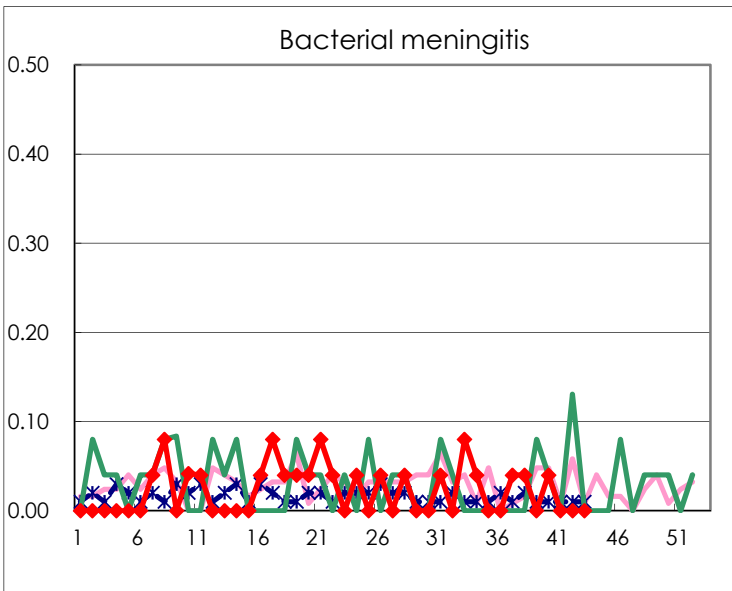
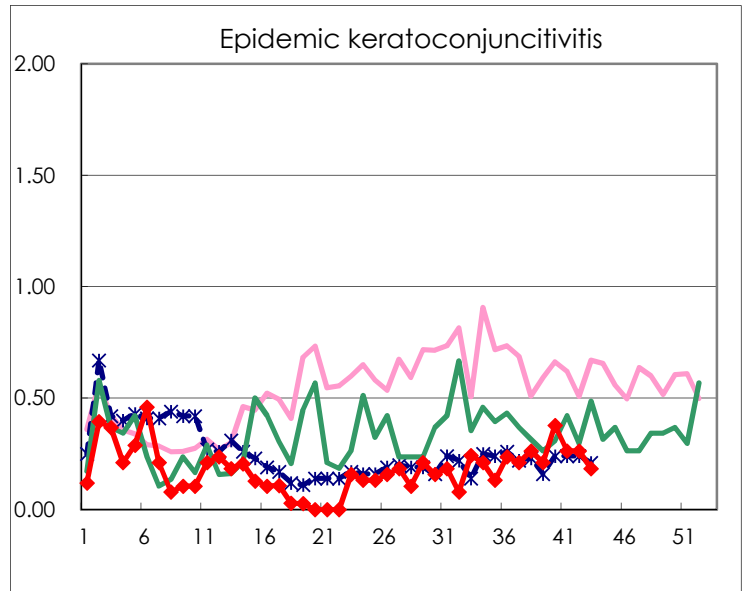
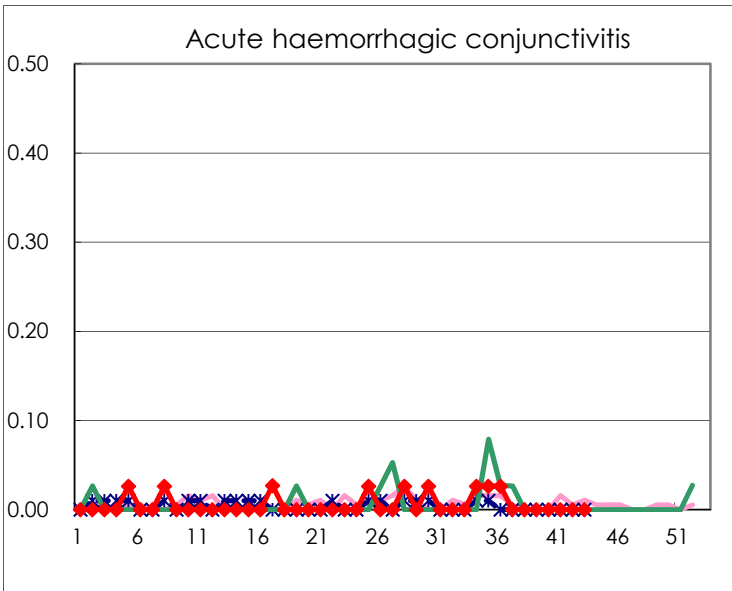
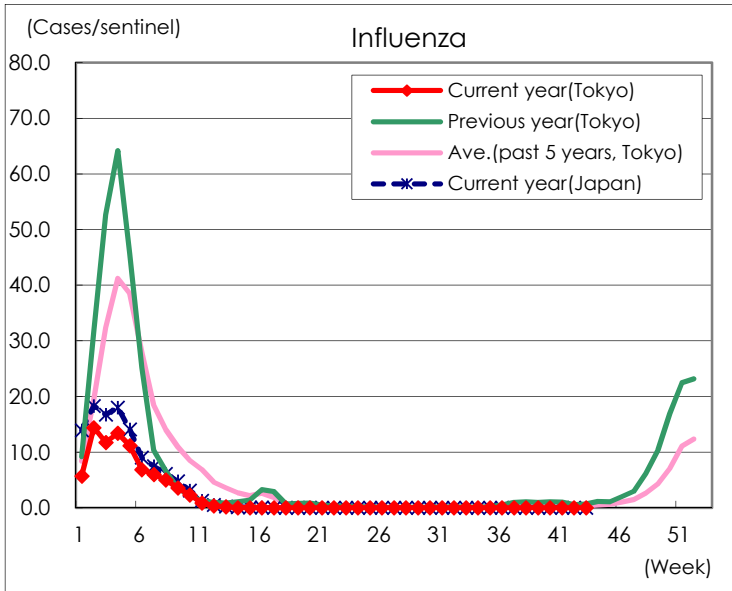
Diseases	Tokyo				
	40th	41st	42nd	43rd	/sentinel
Respiratory syncytial virus infection		2	2	2	0.01
Pharyngoconjunctival fever	27	17	22	23	0.09
Group A streptococcal pharyngitis	109	132	112	138	0.54
Infectious gastroenteritis	507	529	578	548	2.15
Chickenpox	41	20	34	35	0.14
Hand, foot, and mouth disease	20	10	8	3	0.01
Erythema infectiosum	7	4	2	3	0.01
Exanthem subitum	136	147	117	122	0.48
Herpangina	24	16	17	16	0.06
Mumps	11	16	13	18	0.07
Kawasaki disease	3	2	3	3	0.01
Cold with exanthsms	10	10	10	12	0.05
Influenza		1	1	2	0.00
Acute hemorrhagic conjunctivitis					
Epidemic keratoconjunctivitis	14	10	10	7	0.18
Bacterial meningitis	1				
Aseptic meningitis		1			
Mycoplasma pneumonia			1		
Chlamydial pneumonia (excluding psittacosis)					
Infectious gastroenteritis (only by Rotavirus)					
Influenza-Associated Hospitalizations					

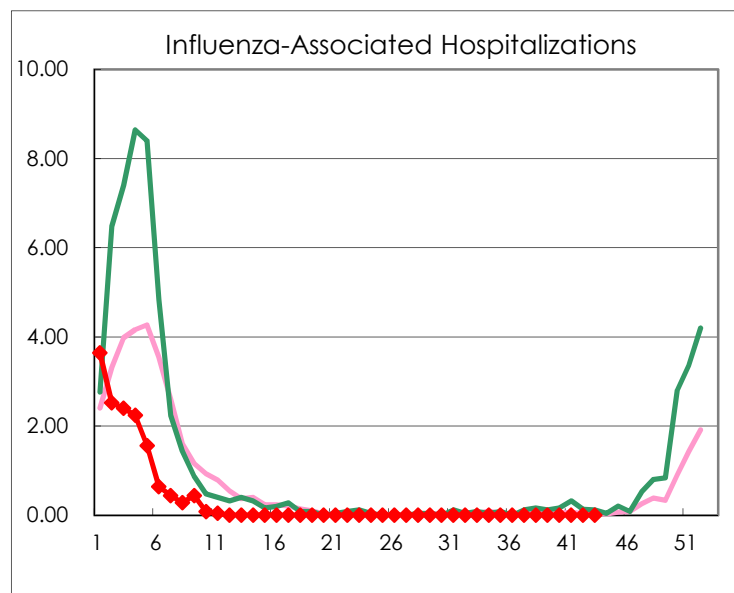
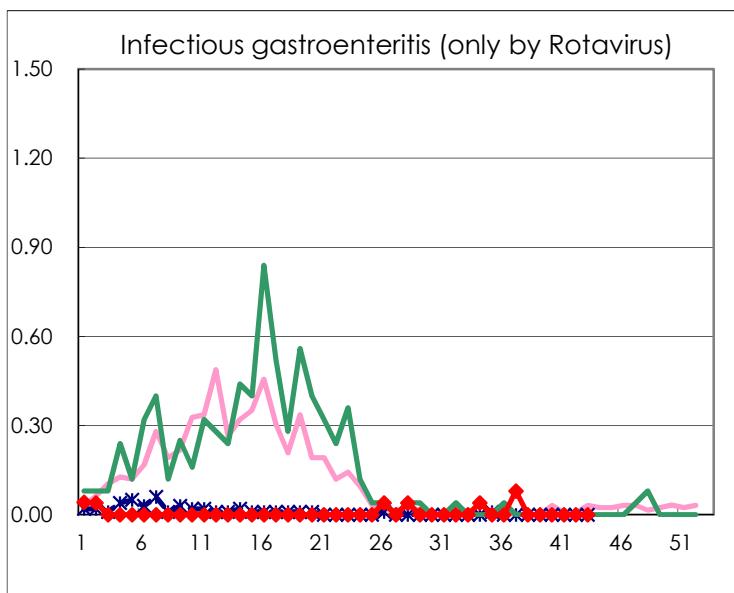
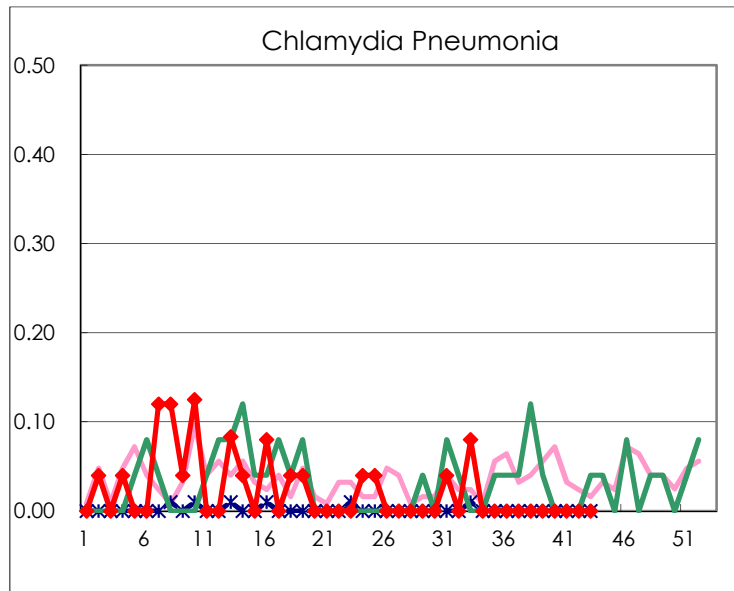
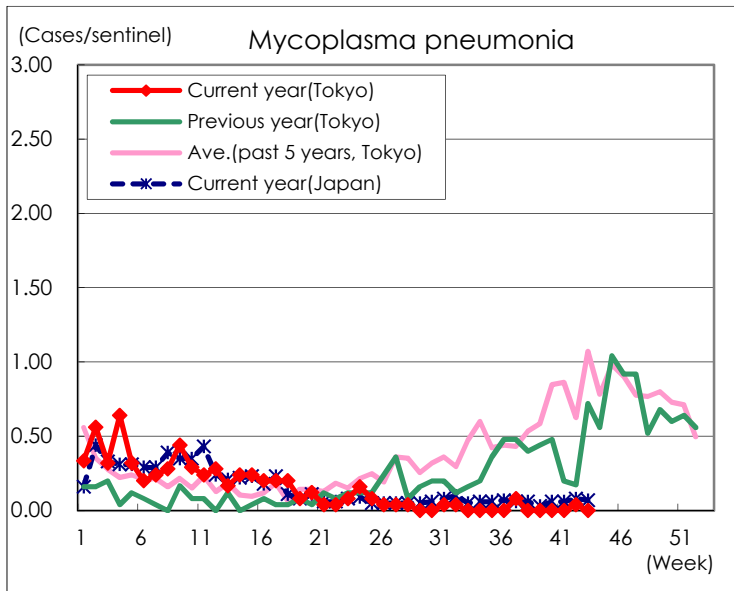
(Blank means 0.)

Disease Trend Graph (weekly reported cases per sentinel in comparison)









Number of sentinel facilities for weekly reporting		
Types of sentinels	Number of sentinels	Sentinels having reported
Pediatric	264	255
Influenza	419	405
Ophthalmic	39	38
Specially-designated	25	24