

5 November 2020 / Number 44

(10/26 ~ 11/1)

Surveillance System in Tokyo, Japan

The infectious diseases which all physicians must report

All physicians must report to health centers the incidence of the diseases which are shown at page one. Health centers electronically report the individual cases to Tokyo Metropolitan Infectious Disease Surveillance Center.

The infectious diseases required to be reported by the sentinels

The numbers of patients who visit the sentinel clinics or hospitals during a week are reported to health centers in Tokyo. And they electronically report the numbers to Tokyo Metropolitan Infectious Disease Surveillance Center. We have about 500 sentinel clinics and hospitals in Tokyo.

Tokyo Metropolitan Institute of Public Health

TEL:81-3-3363-3213 FAX:81-3-5332-7365

e-mail:www@tokyo-eiken.go.jp

URL:idsc.tokyo-eiken.go.jp/

Number of patients with the diseases which all physicians must report

Category	Diseases	Tokyo					Japan	
		41st	42nd	43rd	44th	Cum 2020	44th	Cum 2020
I	Ebola hemorrhagic fever							
	Crimean-Congo hemorrhagic fever							
	Smallpox							
	South American hemorrhagic fever							
	Plague							
	Marburg disease							
	Lassa fever							
II	Acute poliomyelitis							
	Tuberculosis	55	46	52	43	2,054	238	14,382
	Diphtheria							
	Severe Acute Respiratory Syndrome(SARS)							
	Middle East Respiratory Syndrome (MERS)							
	Avian influenza H5N1							
	Avian influenza H7N9							
※	Novel Coronavirus 2019 infection							
III	Cholera							1
	Shigellosis					11		60
	Enterohemorrhagic Escherichia coli infection	15	7	11	4	294	75	2,707
	Typhoid fever					2		21
	Paratyphoid fever					1		7
IV	Hepatitis E	2	3		2	95	9	370
	West Nile fever							
	Hepatitis A			1	1	22	1	111
	Echinococcosis							16
	Yellow fever							
	Psittacosis							5
	Omsk hemorrhagic fever							
	Relapsing fever						1	15
	Kyasanur forest disease							
	Q fever							
	Rabies							1
	Coccidioidomycosis					1		4
	Monkeypox							
	Zika virus infection							1
	Severe Fever with Thrombocytopenia Syndrome						2	72
	Hemorrhagic fever with renal syndrome							
	Western equine encephalitis							
	Tick-borne encephalitis							
	Anthrax							
	Chikungunya fever							3
	Scrub typhus(Tsutsugamushi disease)				1	7	5	122
	Dengue fever					13		42
	Eastern equine encephalitis							
	Avian influenza (excluding H5N1 and H7N9)							
	Nipah virus infection							
	Japanese spotted fever						13	400
	Japanese encephalitis							5
	Hantavirus pulmonary syndrome							
	Herpes B virus infection							
	Glanders							
	Brucellosis							2
	Venezuelan equine encephalitis							
	Hendra virus infection							
	Epidemic typhus							
Botulism					1		4	
Malaria					6		20	
Tularemia								
Lyme disease					1	1	25	
Lyssavirus infection(excluding rabies)								
Rift valley fever								
Melioidosis								
Legionellosis	5	3	3	3	124	44	1,782	
Leptospirosis	1				2		14	
Rocky mountain spotted fever								

Category	Diseases	Tokyo					Japan	
		41st	42nd	43rd	44th	Cum 2020	44th	Cum 2020
V	Amebiasis	4	3	1	5	98	5	513
	Viral hepatitis(excluding hepatitis A and E)			1		51	3	207
	CRE infection	1	6	5	4	132	15	1,533
	Acute Flaccid Paralysis (excluding Acute poliomyelitis)					2		29
	Acute encephalitis(excluding JE and WNE)				2	30	5	429
	Cryptosporidiosis							6
	Creutzfeldt-Jakob disease	1			1	14	1	124
	Severe invasive streptococcal infections(TSLS)	2			1	84	7	645
	Acquired immunodeficiency syndrome (AIDS)	13	9	8	4	318	8	895
	Giardiasis	1	2			8		22
	Invasive <i>Haemophilus influenzae</i> disease				1	22	2	225
	Invasive meningococcal disease					2		13
	Invasive pneumococcal disease	2	2	2		128	21	1,346
	Varicella (limited to hospitalized case)	1		2	2	42	6	291
	Congenital rubella syndrome							1
	Syphilis	26	31	32	21	1,260	64	4,782
	Disseminated cryptococcosis					13	2	124
	Tetanus	1	1			7	1	92
	Vancomycin-resistant <i>S. aureus</i> infection							
	Vancomycin-resistant Enterococcus infection					6		113
Pertussis	4	1		3	255	13	2,797	
Rubella	1				24	1	93	
Measles					2		13	
MDRA infection							10	

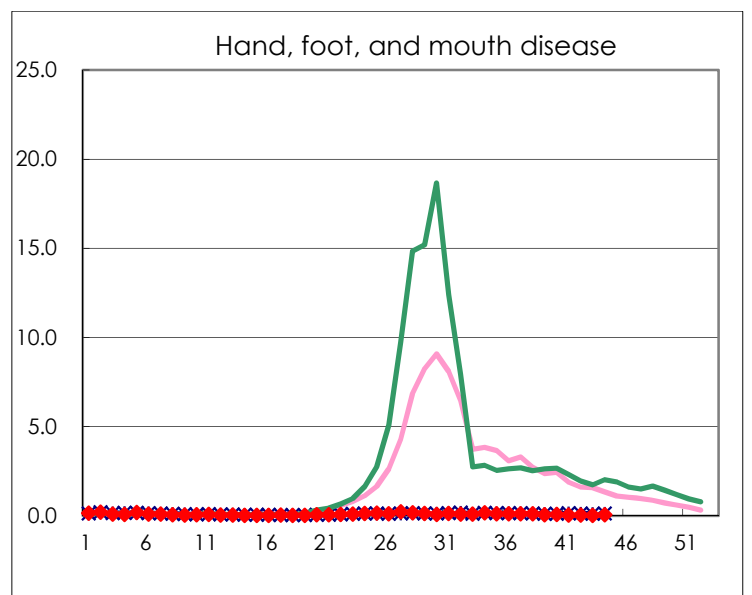
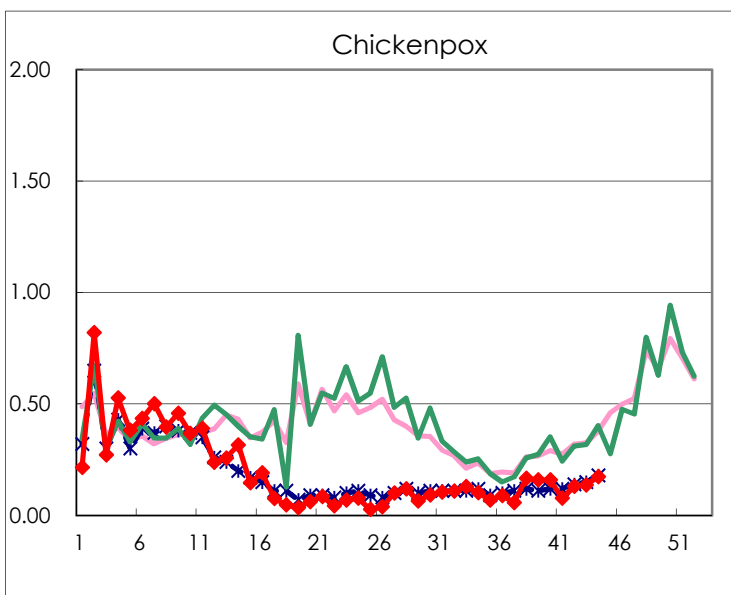
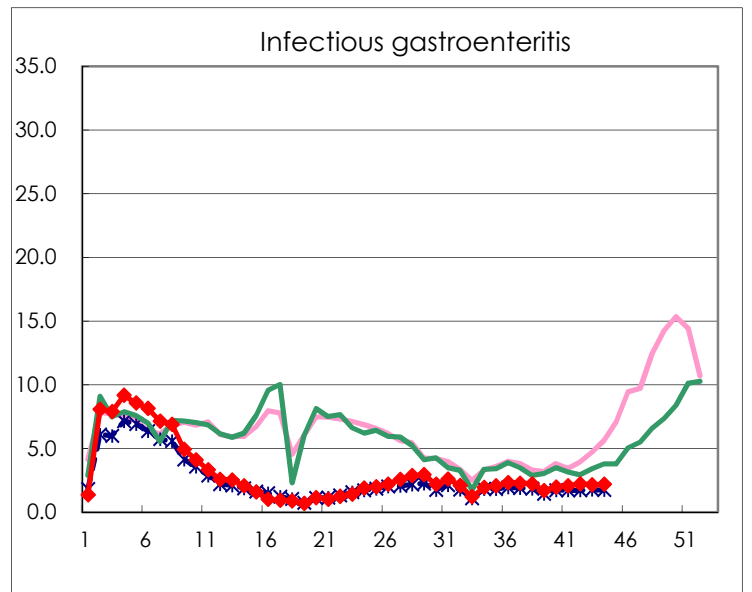
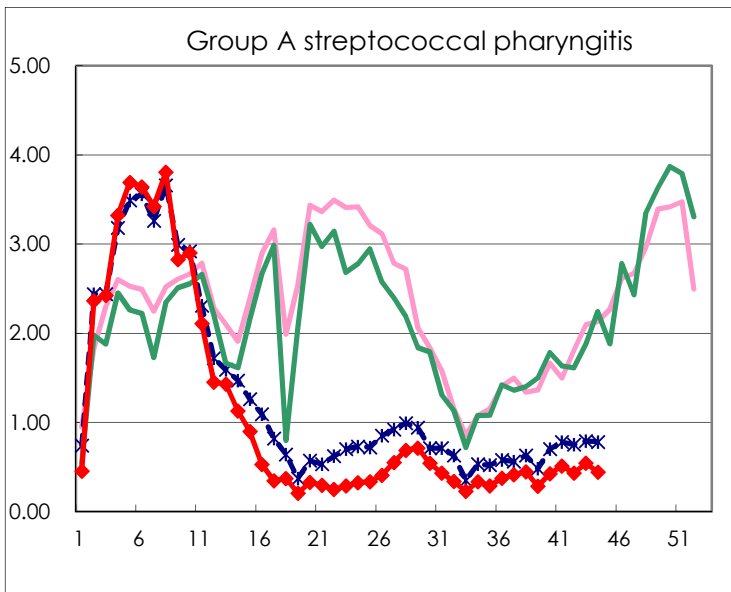
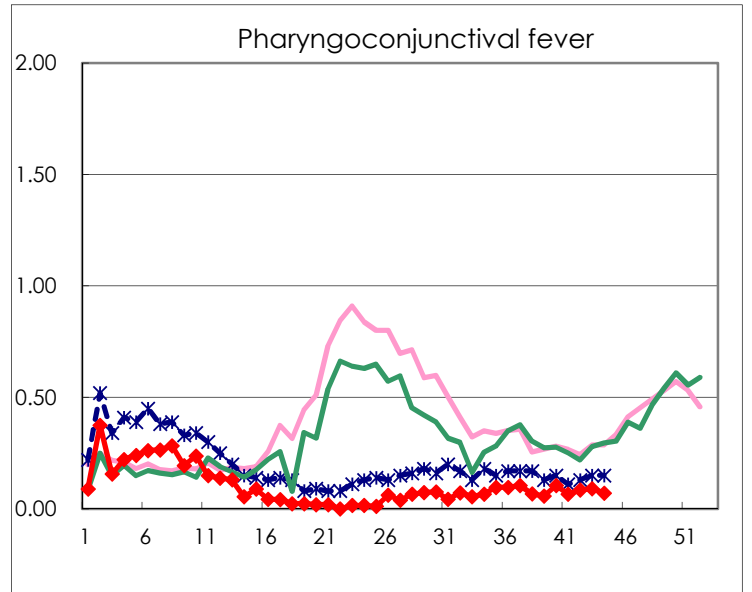
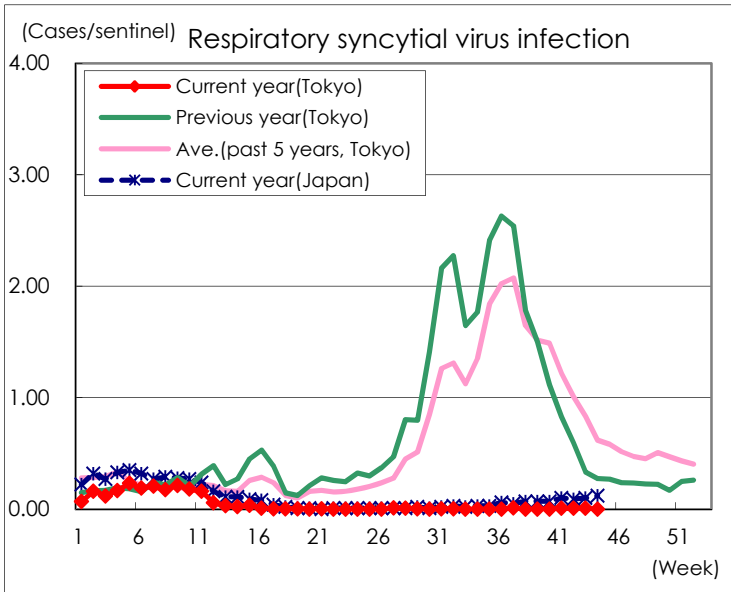
※ Designated infectious disease

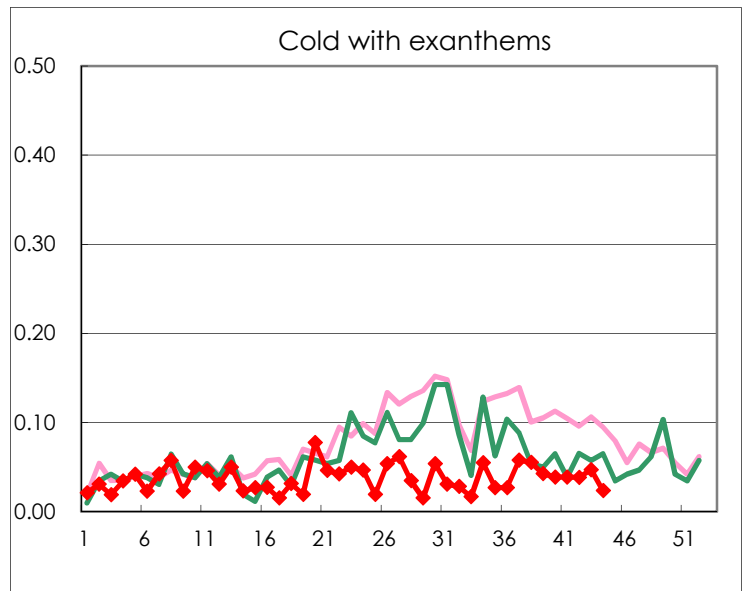
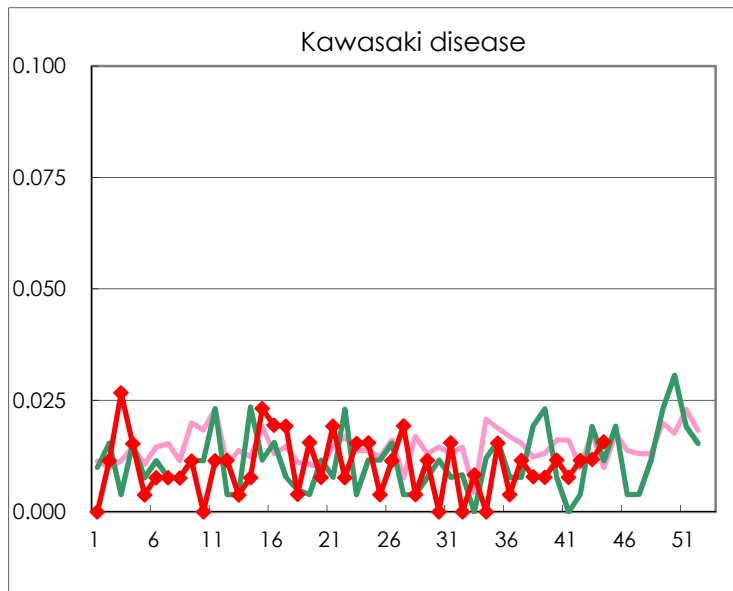
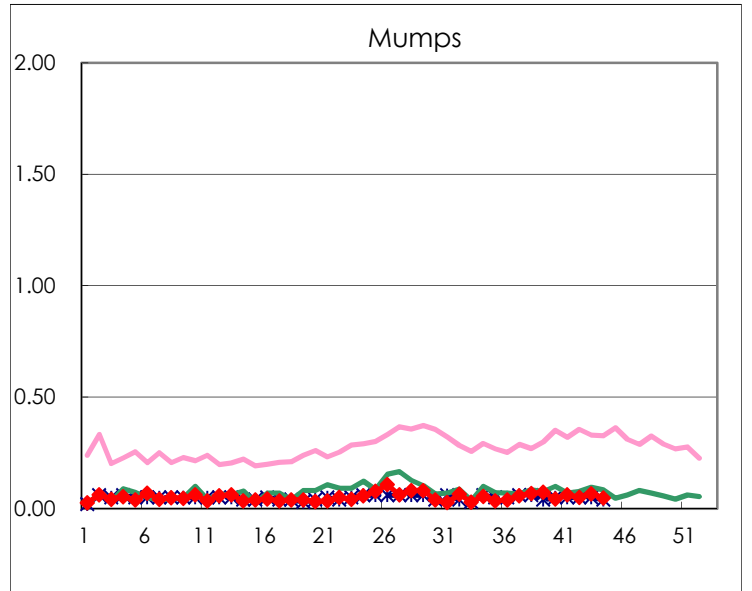
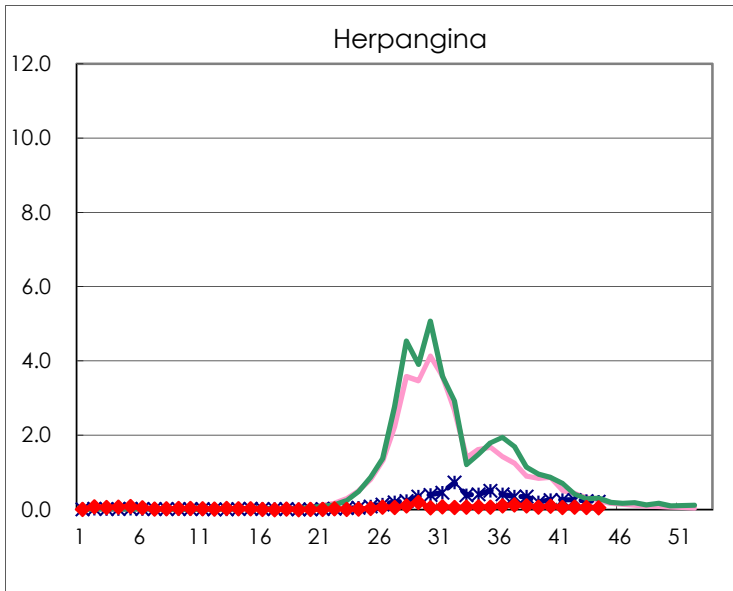
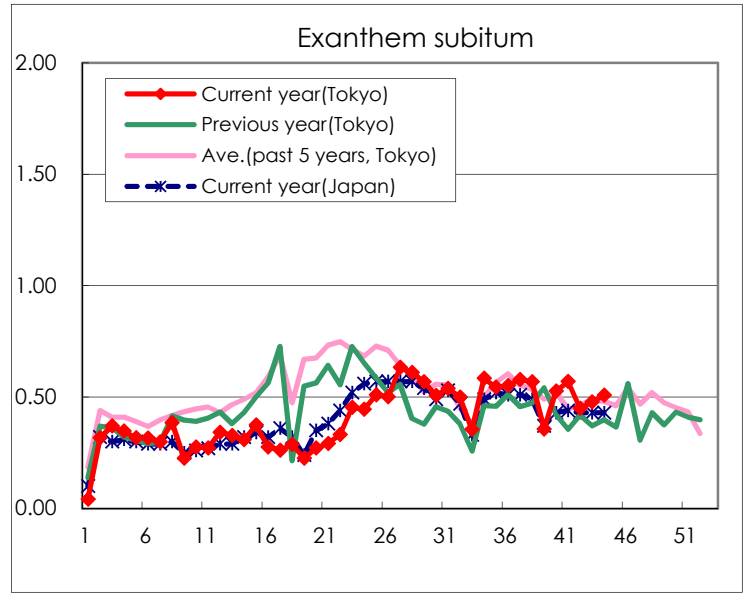
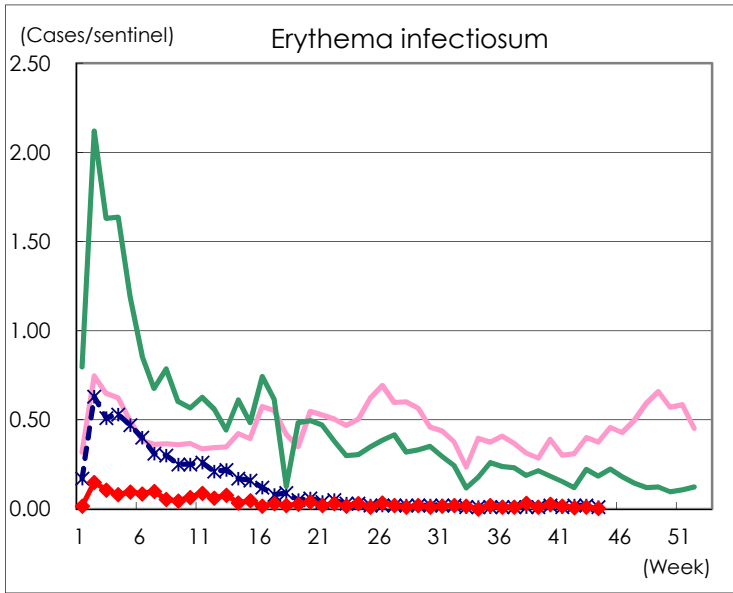
Number of patients with the diseases to be reported
by the designated clinics and hospitals

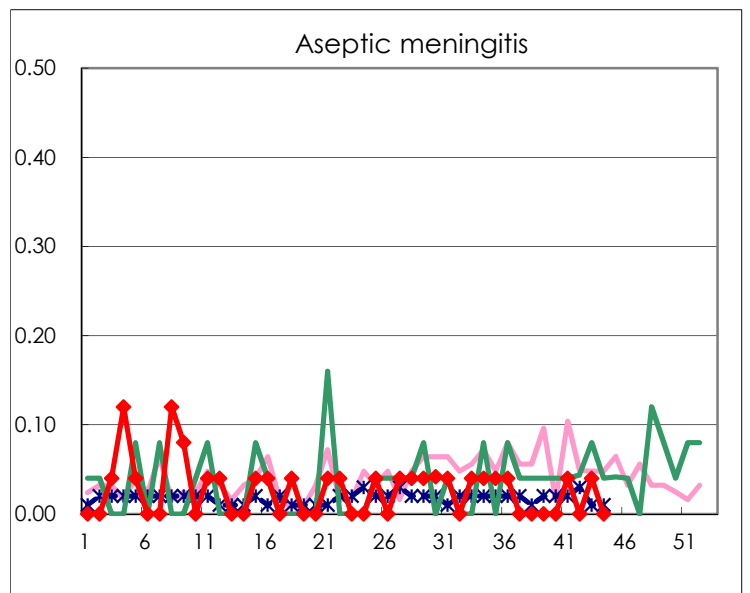
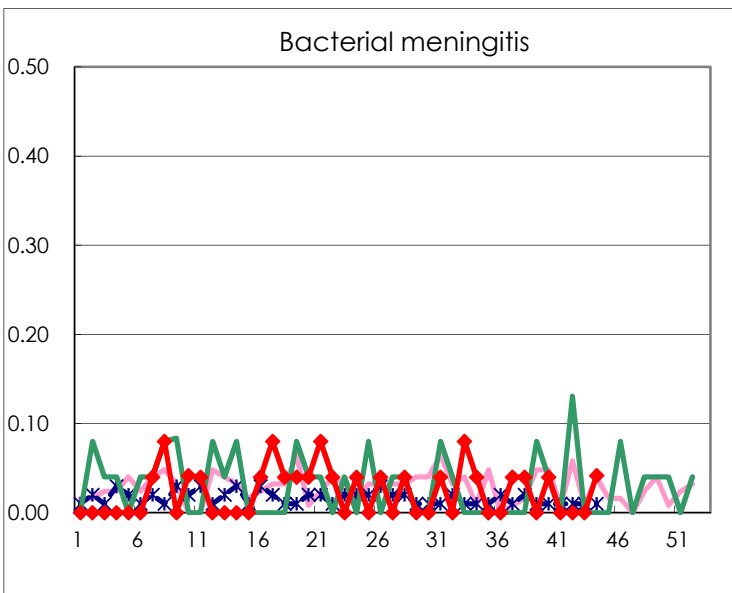
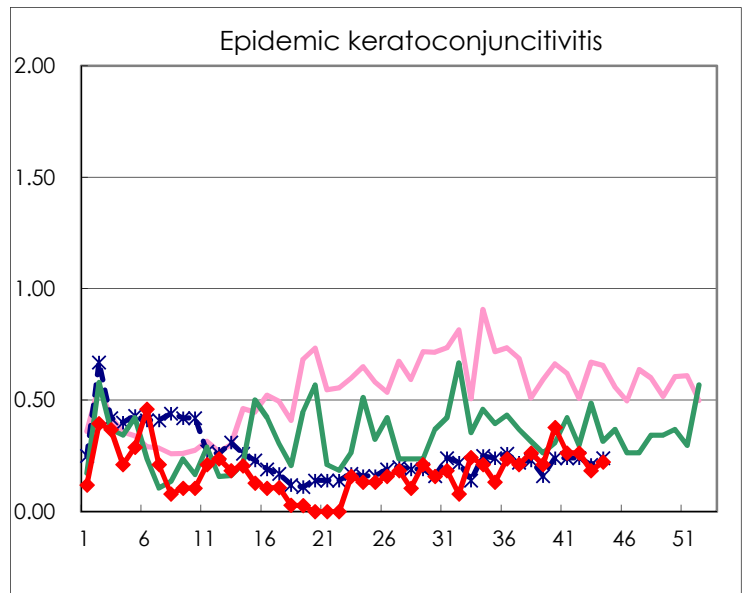
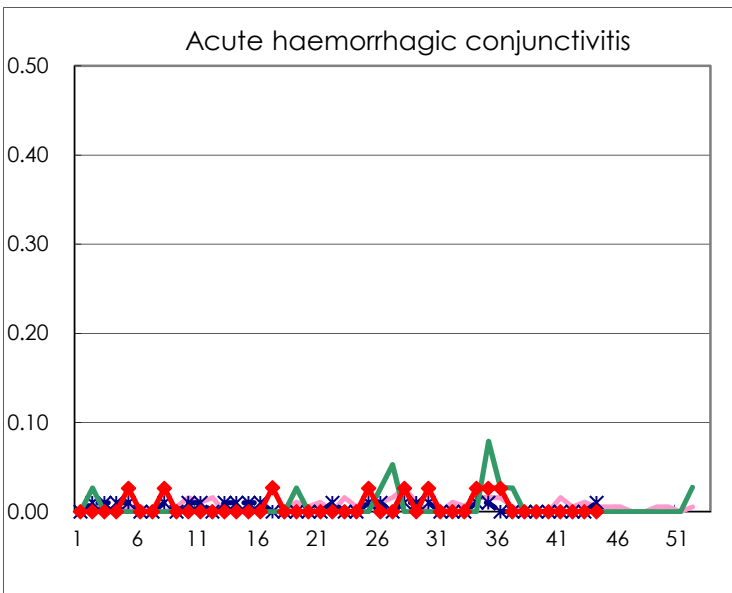
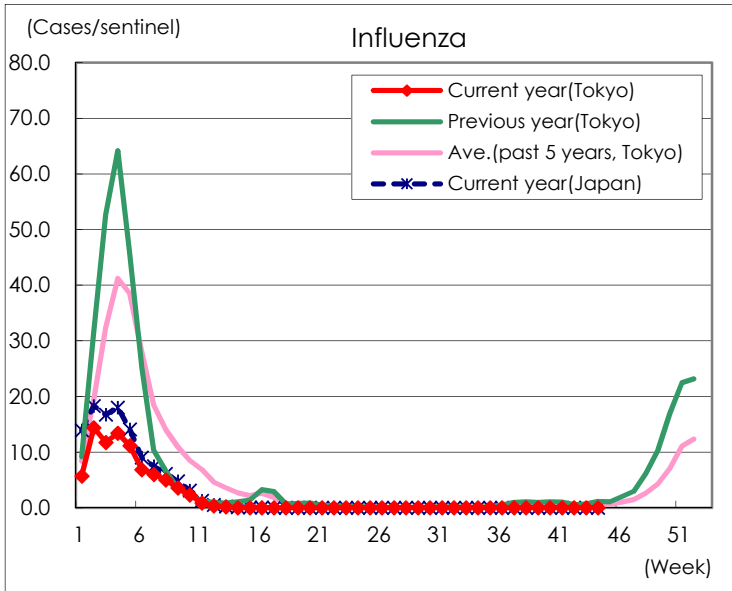
Diseases	Tokyo				
	41st	42nd	43rd	44th	/sentinel
Respiratory syncytial virus infection	2	2	2		
Pharyngoconjunctival fever	17	22	23	18	0.07
Group A streptococcal pharyngitis	132	112	138	112	0.44
Infectious gastroenteritis	529	578	548	553	2.18
Chickenpox	20	34	35	44	0.17
Hand, foot, and mouth disease	10	8	3	15	0.06
Erythema infectiosum	4	2	3	1	0.00
Exanthem subitum	147	117	122	129	0.51
Herpangina	16	17	16	14	0.06
Mumps	16	13	17	12	0.05
Kawasaki disease	2	3	3	4	0.02
Cold with exanths	10	10	12	6	0.02
Influenza	1	1	2	4	0.01
Acute hemorrhagic conjunctivitis					
Epidemic keratoconjunctivitis	10	10	7	8	0.22
Bacterial meningitis				1	0.04
Aseptic meningitis	1		1		
Mycoplasma pneumonia		1		1	0.04
Chlamydial pneumonia (excluding psittacosis)					
Infectious gastroenteritis (only by Rotavirus)					
Influenza-Associated Hospitalizations					

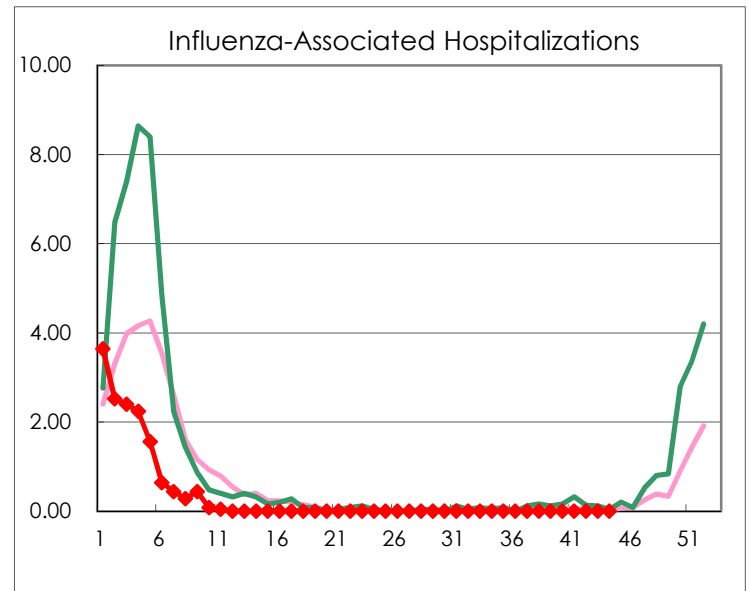
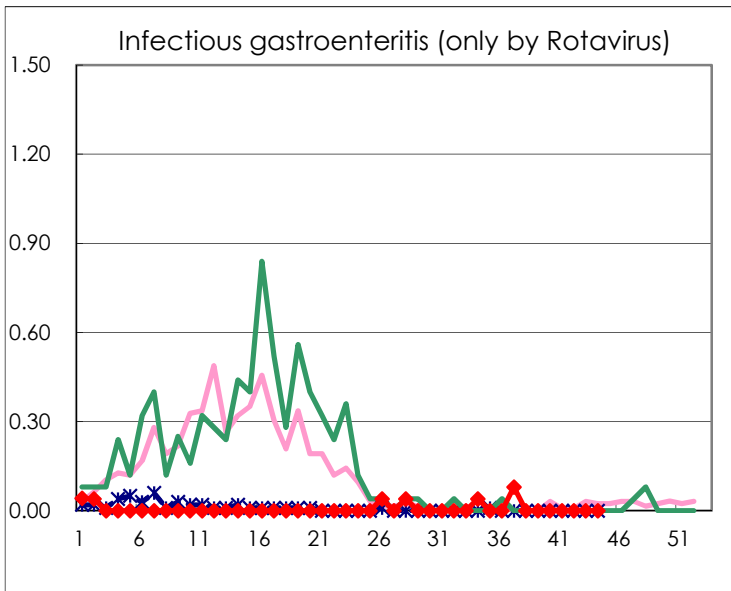
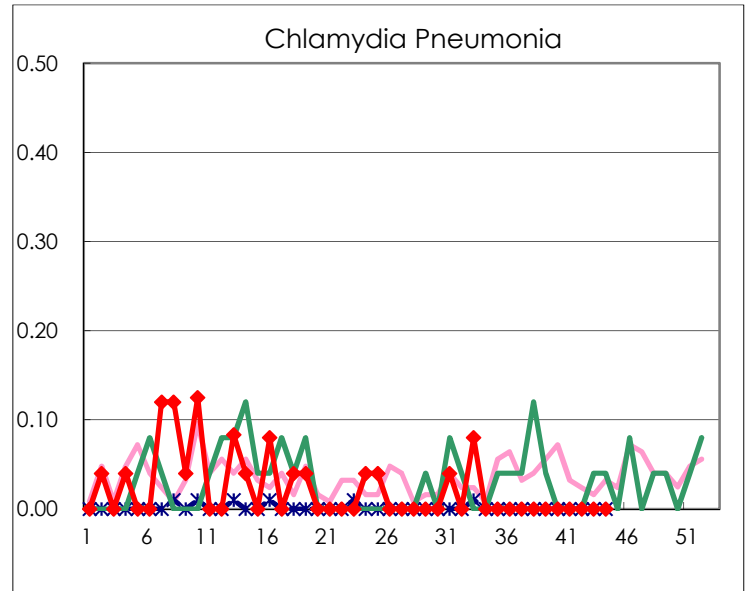
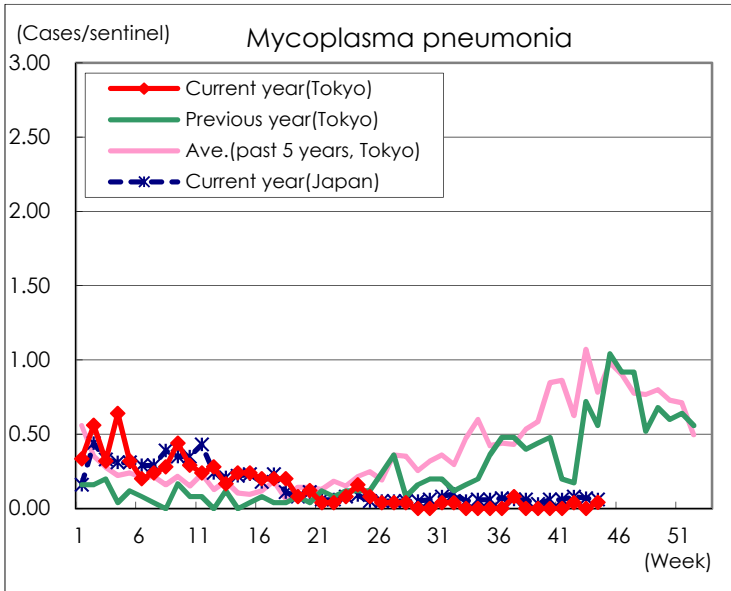
(Blank means 0.)

Disease Trend Graph (weekly reported cases per sentinel in comparison)









Number of sentinel facilities for weekly reporting		
Types of sentinels	Number of sentinels	Sentinels having reported
Pediatric	264	254
Influenza	419	402
Ophthalmic	39	36
Specially-designated	25	24