

**12 November 2020 / Number 45**

**( 11/2 ~ 11/8 )**

### Surveillance System in Tokyo, Japan

The infectious diseases which all physicians must report

All physicians must report to health centers the incidence of the diseases which are shown at page one. Health centers electronically report the individual cases to Tokyo Metropolitan Infectious Disease Surveillance Center.

The infectious diseases required to be reported by the sentinels

The numbers of patients who visit the sentinel clinics or hospitals during a week are reported to health centers in Tokyo. And they electronically report the numbers to Tokyo Metropolitan Infectious Disease Surveillance Center. We have about 500 sentinel clinics and hospitals in Tokyo.

Tokyo Metropolitan Institute of Public Health

TEL:81-3-3363-3213 FAX:81-3-5332-7365

e-mail:[www@tokyo-eiken.go.jp](mailto:www@tokyo-eiken.go.jp)

URL:[idsc.tokyo-eiken.go.jp/](http://idsc.tokyo-eiken.go.jp/)

---

Number of patients with the diseases which all physicians must report

Category	Diseases	Tokyo					Japan		
		42nd	43rd	44th	45th	Cum 2020	45th	Cum 2020	
I	Ebola hemorrhagic fever								
	Crimean-Congo hemorrhagic fever								
	Smallpox								
	South American hemorrhagic fever								
	Plague								
	Marburg disease								
	Lassa fever								
II	Acute poliomyelitis								
	Tuberculosis	48	57	47	39	2,105	214	14,683	
	Diphtheria								
	Severe Acute Respiratory Syndrome(SARS)								
	Middle East Respiratory Syndrome (MERS)								
	Avian influenza H5N1								
	Avian influenza H7N9								
※	Novel Coronavirus 2019 infection								
III	Cholera							1	
	Shigellosis					11		60	
	Enterohemorrhagic Escherichia coli infection	7	11	5	3	298	86	2,811	
	Typhoid fever					2		21	
	Paratyphoid fever					1		7	
IV	Hepatitis E	3		2	1	96	8	378	
	West Nile fever								
	Hepatitis A		1	1		22		111	
	Echinococcosis							16	
	Yellow fever								
	Psittacosis							5	
	Omsk hemorrhagic fever								
	Relapsing fever							15	
	Kyasanur forest disease								
	Q fever								
	Rabies							1	
	Coccidioidomycosis					1		4	
	Monkeypox								
	Zika virus infection							1	
	Severe Fever with Thrombocytopenia Syndrome							1	73
	Hemorrhagic fever with renal syndrome								
	Western equine encephalitis								
	Tick-borne encephalitis								
	Anthrax								
	Chikungunya fever								3
	Scrub typhus(Tsutsugamushi disease)			1		7	7	132	
	Dengue fever					13		42	
	Eastern equine encephalitis								
	Avian influenza (excluding H5N1 and H7N9)								
	Nipah virus infection								
	Japanese spotted fever								403
	Japanese encephalitis								5
	Hantavirus pulmonary syndrome								
	Herpes B virus infection								
	Glanders								
	Brucellosis								2
	Venezuelan equine encephalitis								
	Hendra virus infection								
	Epidemic typhus								
	Botulism						1		4
Malaria						6		20	
Tularemia									
Lyme disease						1		25	
Lyssavirus infection(excluding rabies)									
Rift valley fever									
Melioidosis									
Legionellosis	3	3	4	1	126	35	1,831		
Leptospirosis					2		14		
Rocky mountain spotted fever									

Category	Diseases	Tokyo					Japan	
		42nd	43rd	44th	45th	Cum 2020	45th	Cum 2020
V	Amebiasis	3	1	5	2	100	7	526
	Viral hepatitis(excluding hepatitis A and E)		1		1	52	2	212
	CRE infection	6	5	4	4	136	23	1,578
	Acute Flaccid Paralysis (excluding Acute poliomyelitis)					2		29
	Acute encephalitis(excluding JE and WNE)			2		30	6	438
	Cryptosporidiosis							6
	Creutzfeldt-Jakob disease			1		14	1	125
	Severe invasive streptococcal infections(TSLS)			1	1	85	7	659
	Acquired immunodeficiency syndrome (AIDS)	9	8	5	10	329	12	918
	Giardiasis	2				8		23
	Invasive <i>Haemophilus influenzae</i> disease			1		22	2	227
	Invasive meningococcal disease					2		13
	Invasive pneumococcal disease	2	2	2	3	133	33	1,387
	Varicella (limited to hospitalized case)		3	2	1	44	5	306
	Congenital rubella syndrome							1
	Syphilis	31	32	25	34	1,298	58	4,903
	Disseminated cryptococcosis					13	3	128
	Tetanus	1			1	8	1	94
	Vancomycin-resistant <i>S. aureus</i> infection							
	Vancomycin-resistant Enterococcus infection					6	3	118
Pertussis	1		3		255	8	2,807	
Rubella					27		96	
Measles					3		13	
MDRA infection							10	

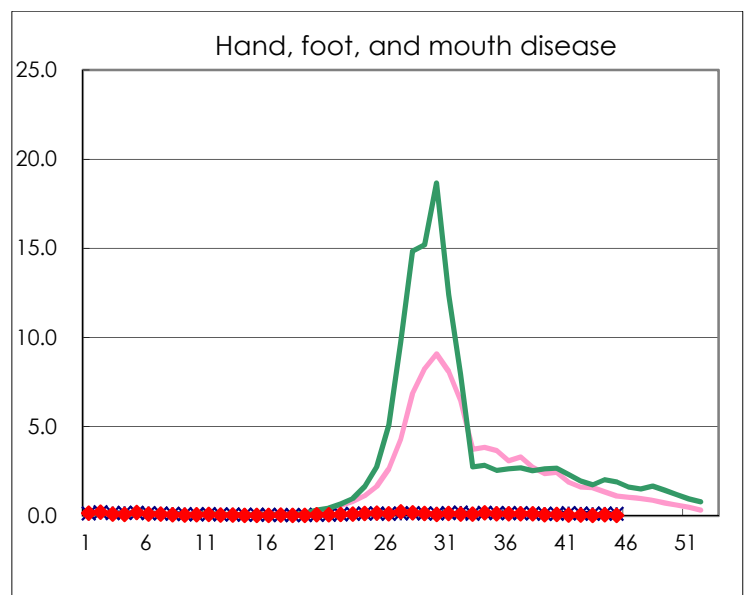
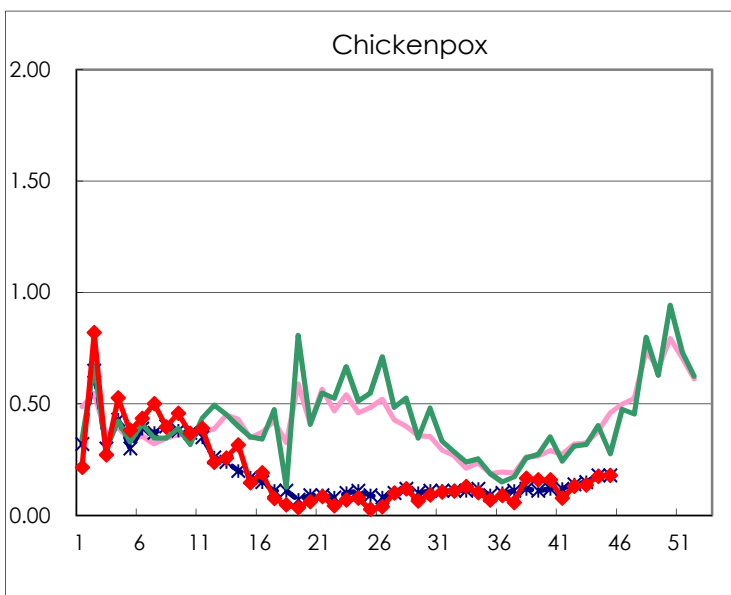
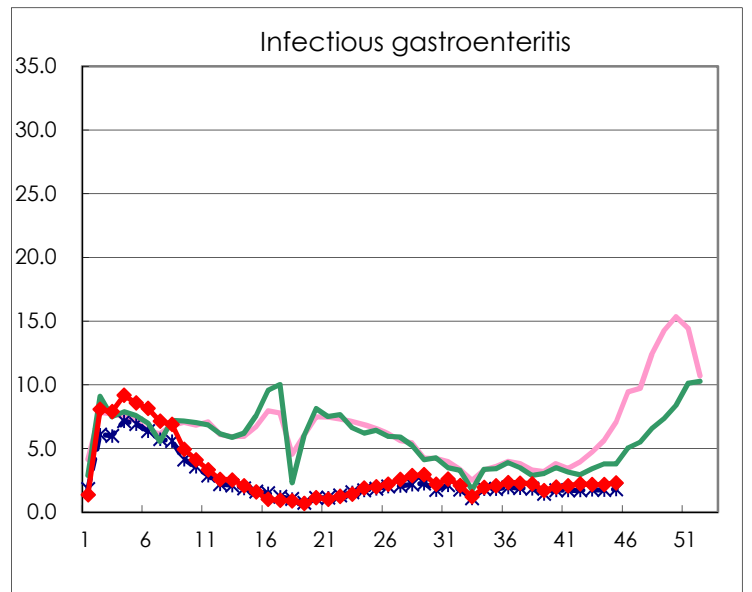
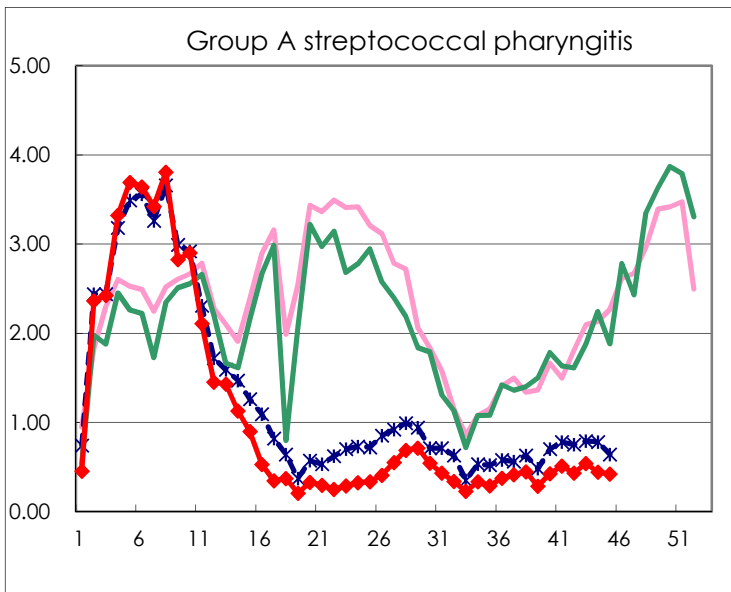
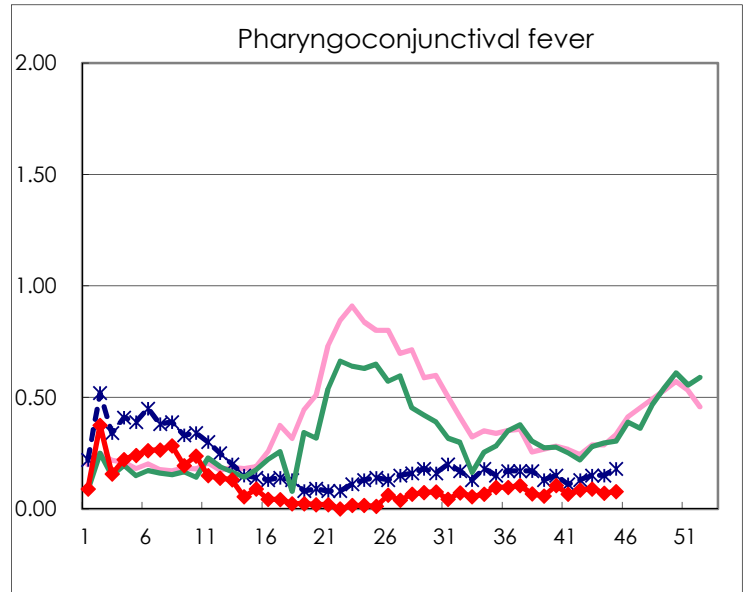
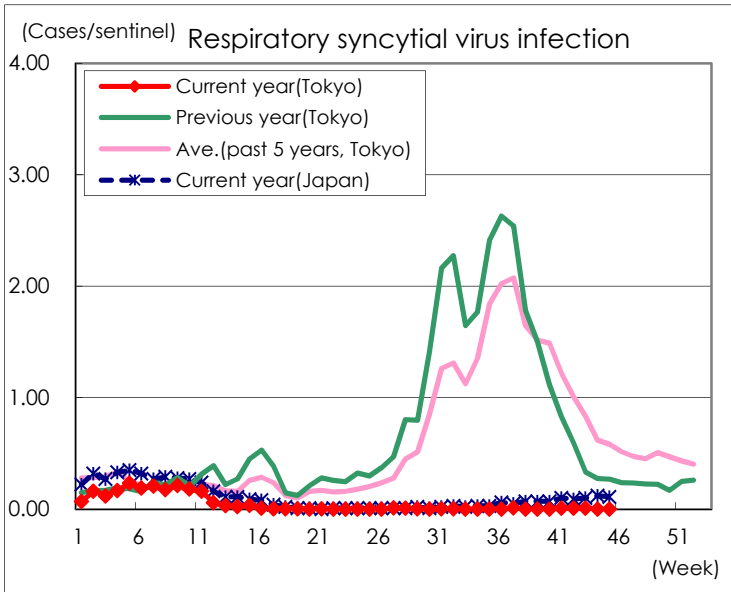
※ Designated infectious disease

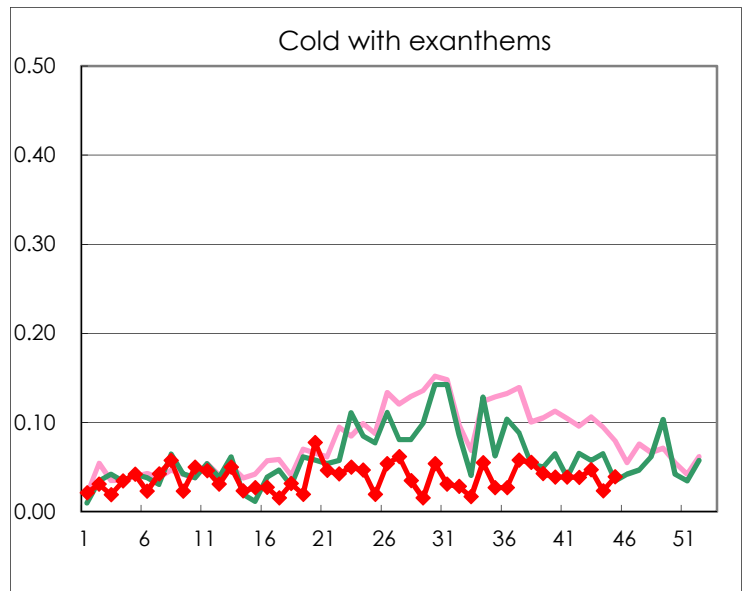
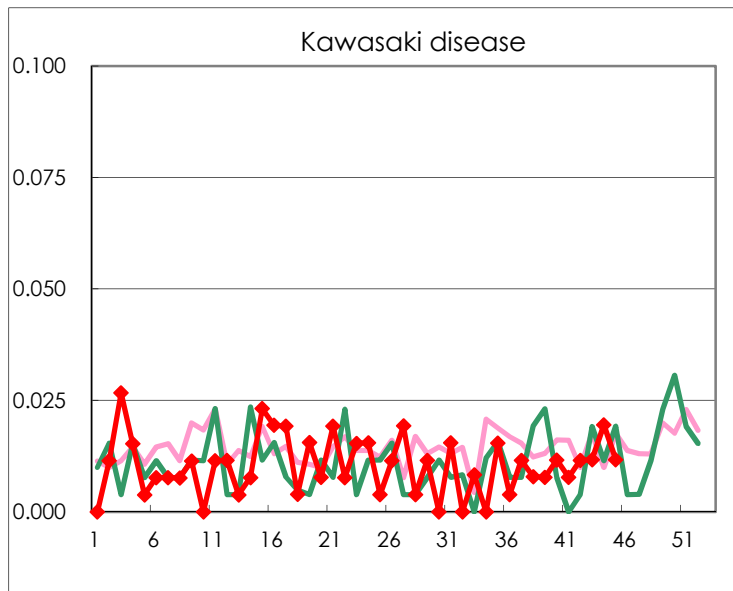
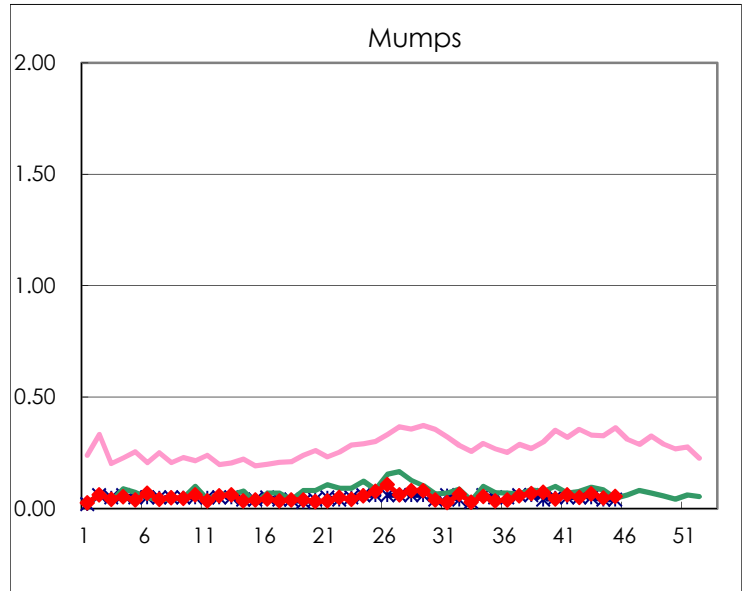
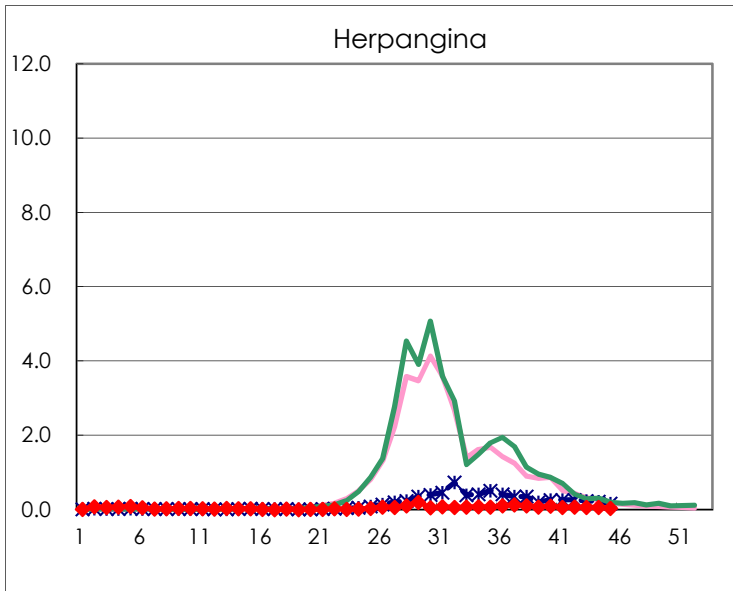
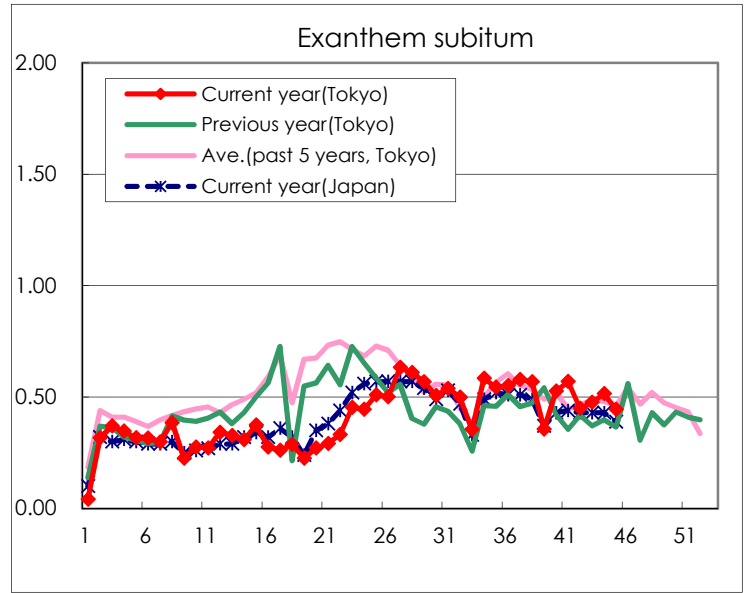
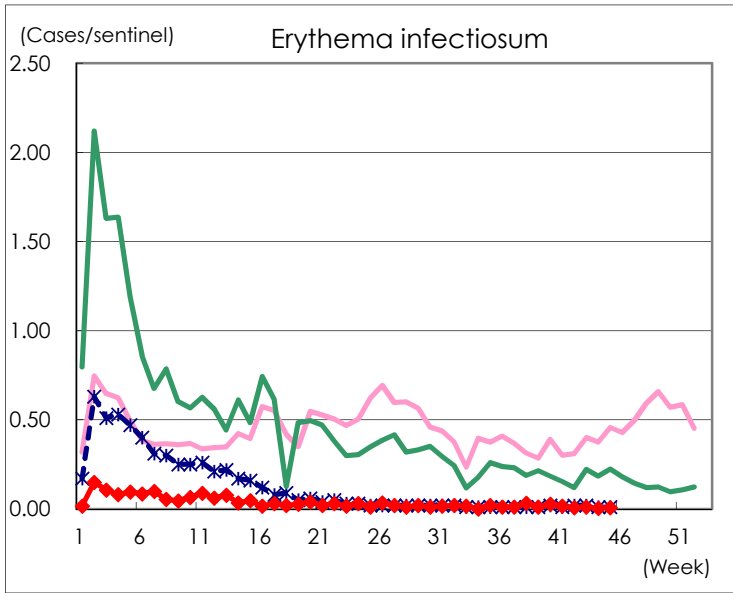
Number of patients with the diseases to be reported  
by the designated clinics and hospitals

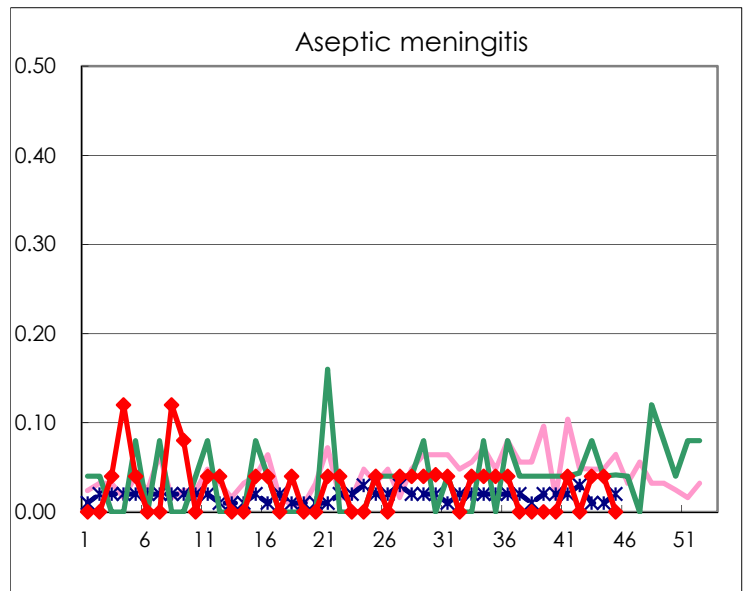
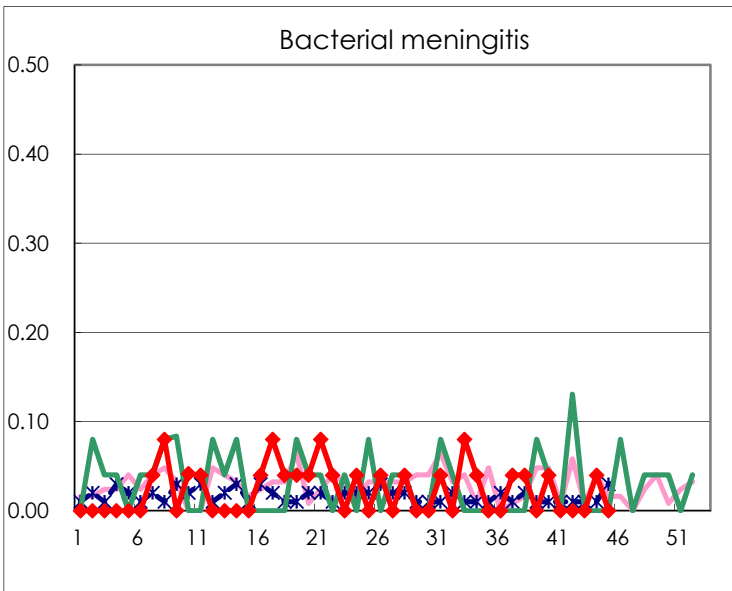
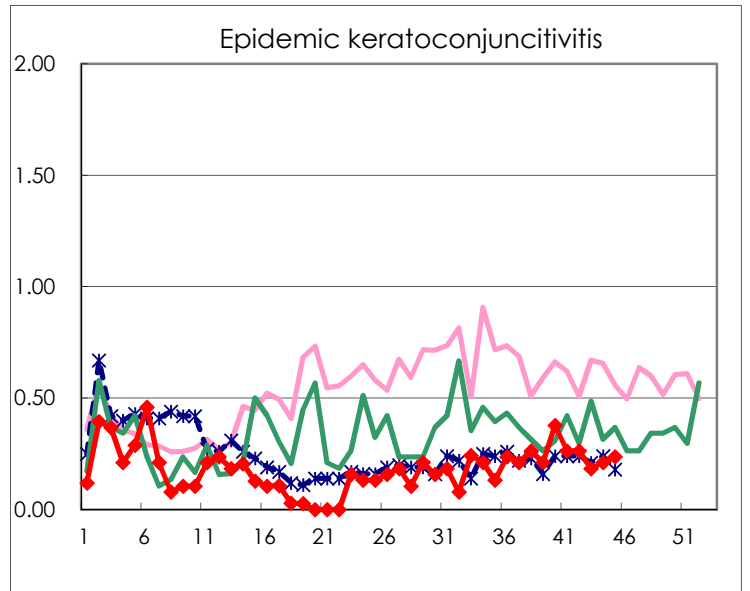
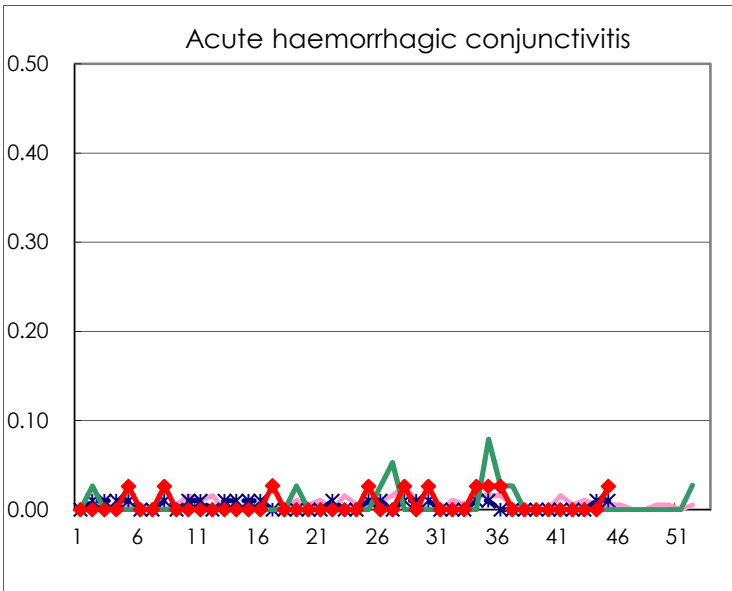
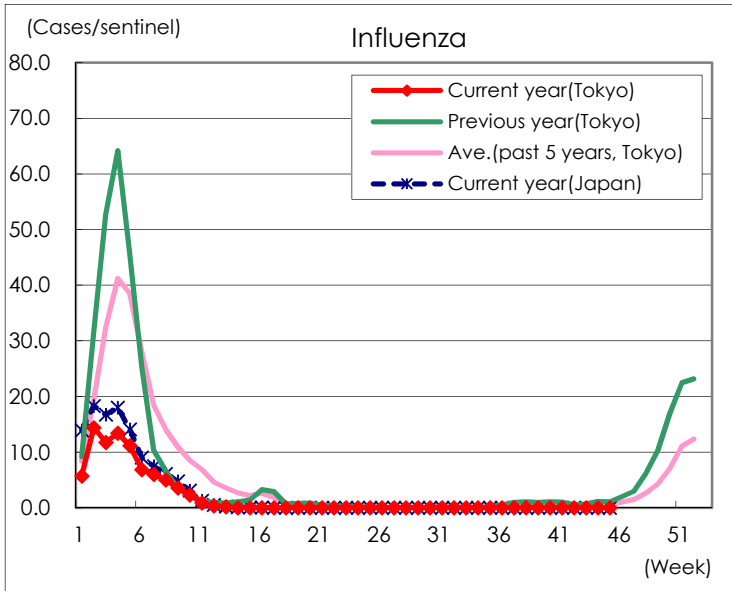
Diseases	Tokyo				
	42nd	43rd	44th	45th	/sentinel
Respiratory syncytial virus infection	2	2			
Pharyngoconjunctival fever	22	23	18	20	0.08
Group A streptococcal pharyngitis	112	138	113	108	0.42
Infectious gastroenteritis	578	551	557	586	2.29
Chickenpox	34	35	45	46	0.18
Hand, foot, and mouth disease	8	3	15	7	0.03
Erythema infectiosum	2	3	1	2	0.01
Exanthem subitum	117	122	132	114	0.45
Herpangina	17	16	15	9	0.04
Mumps	13	17	12	14	0.05
Kawasaki disease	3	3	5	3	0.01
Cold with exanths	10	12	6	10	0.04
Influenza	1	2	4	4	0.01
Acute hemorrhagic conjunctivitis				1	0.03
Epidemic keratoconjunctivitis	10	7	8	9	0.24
Bacterial meningitis			1		
Aseptic meningitis		1	1		
Mycoplasma pneumonia	1		2	1	0.04
Chlamydial pneumonia (excluding psittacosis)				1	0.04
Infectious gastroenteritis (only by Rotavirus)					
Influenza-Associated Hospitalizations					

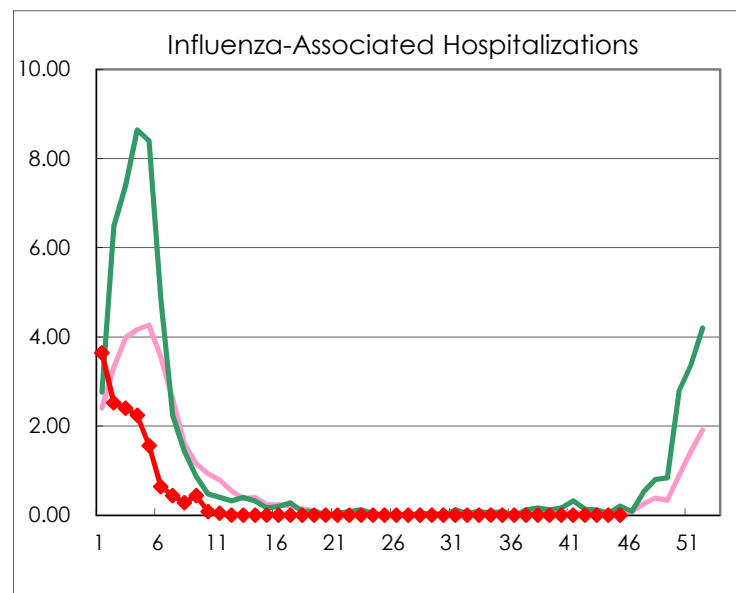
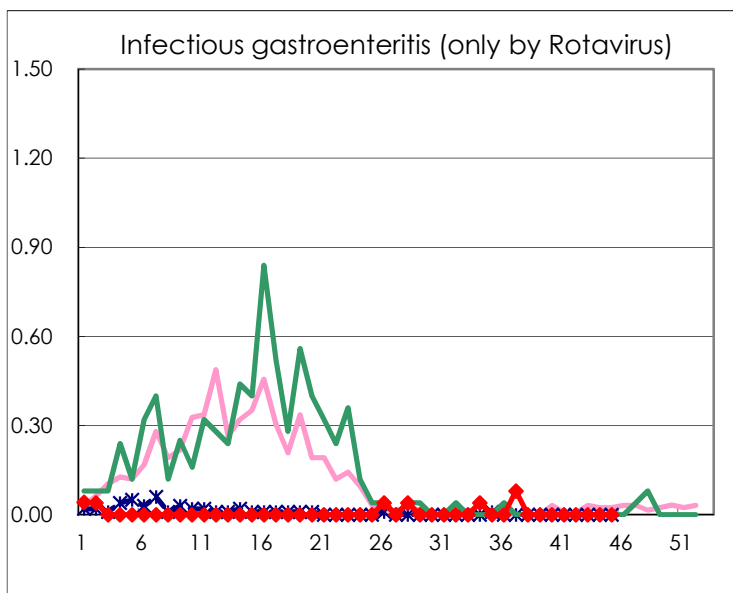
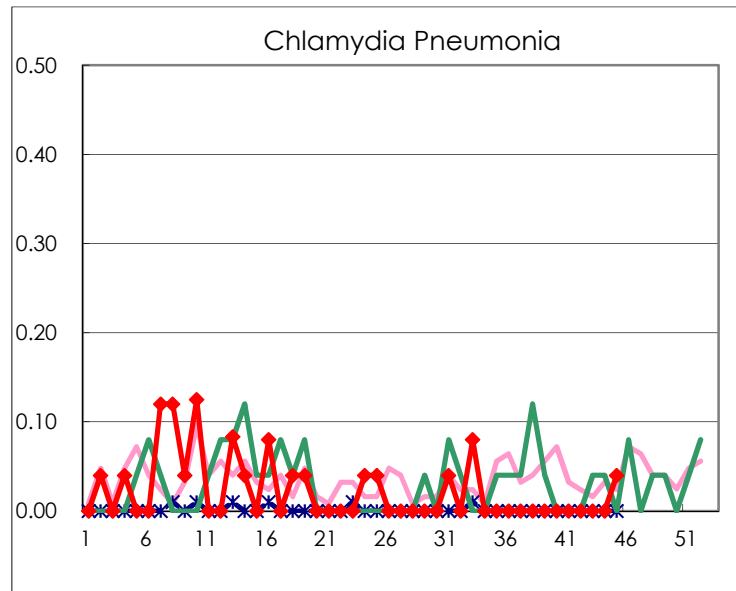
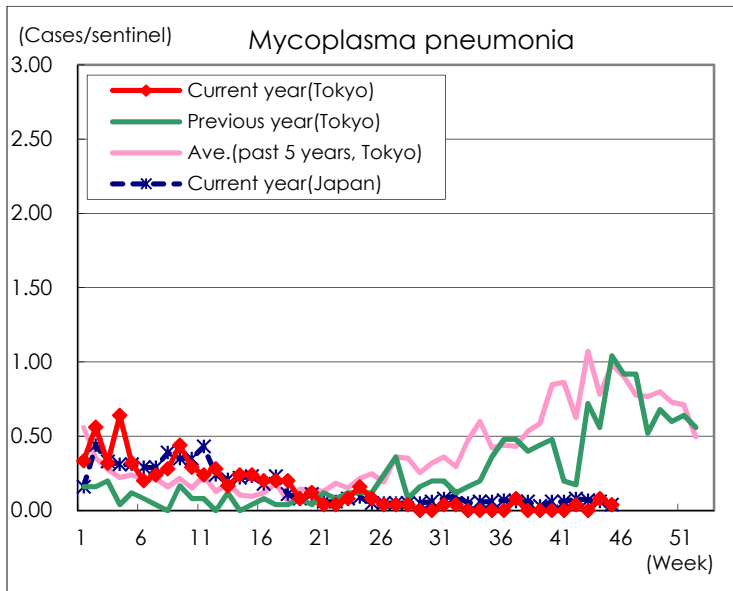
( Blank means 0. )

# Disease Trend Graph (weekly reported cases per sentinel in comparison)









Number of sentinel facilities for weekly reporting		
Types of sentinels	Number of sentinels	Sentinels having reported
Pediatric	264	256
Influenza	419	407
Ophthalmic	39	38
Specially-designated	25	25