

## 19 November 2020 / Number 46 ( 11/9 ~ 11/15 )

### Surveillance System in Tokyo, Japan

The infectious diseases which all physicians must report

All physicians must report to health centers the incidence of the diseases which are shown at page one. Health centers electronically report the individual cases to Tokyo Metropolitan Infectious Disease Surveillance Center.

The infectious diseases required to be reported by the sentinels

The numbers of patients who visit the sentinel clinics or hospitals during a week are reported to health centers in Tokyo. And they electronically report the numbers to Tokyo Metropolitan Infectious Disease Surveillance Center. We have about 500 sentinel clinics and hospitals in Tokyo.

Tokyo Metropolitan Institute of Public Health

TEL:81-3-3363-3213 FAX:81-3-5332-7365

e-mail:[www@tokyo-eiken.go.jp](mailto:www@tokyo-eiken.go.jp)

URL:[idsc.tokyo-eiken.go.jp/](http://idsc.tokyo-eiken.go.jp/)

---

Number of patients with the diseases which all physicians must report

Category	Diseases	Tokyo					Japan	
		43rd	44th	45th	46th	Cum 2020	46th	Cum 2020
I	Ebola hemorrhagic fever							
	Crimean-Congo hemorrhagic fever							
	Smallpox							
	South American hemorrhagic fever							
	Plague							
	Marburg disease							
	Lassa fever							
II	Acute poliomyelitis							
	Tuberculosis	61	50	42	45	2,166	235	15,018
	Diphtheria							
	Severe Acute Respiratory Syndrome(SARS)							
	Middle East Respiratory Syndrome (MERS)							
	Avian influenza H5N1							
	Avian influenza H7N9							
※	Novel Coronavirus 2019 infection							
III	Cholera							1
	Shigellosis					11		60
	Enterohemorrhagic Escherichia coli infection	11	5	3	6	304	45	2,859
	Typhoid fever					2		21
	Paratyphoid fever					1		7
IV	Hepatitis E		2	1	2	98	9	388
	West Nile fever							
	Hepatitis A	1	1		1	23	2	114
	Echinococcosis							17
	Yellow fever							
	Psittacosis							5
	Omsk hemorrhagic fever							
	Relapsing fever							15
	Kyasanur forest disease							
	Q fever							
	Rabies							1
	Coccidioidomycosis					1		4
	Monkeypox							
	Zika virus infection							1
	Severe Fever with Thrombocytopenia Syndrome							73
	Hemorrhagic fever with renal syndrome							
	Western equine encephalitis							
	Tick-borne encephalitis							
	Anthrax							
	Chikungunya fever							3
	Scrub typhus(Tsutsugamushi disease)		1		1	8	15	153
	Dengue fever					13		42
	Eastern equine encephalitis							
	Avian influenza (excluding H5N1 and H7N9)							
	Nipah virus infection							
	Japanese spotted fever						2	405
	Japanese encephalitis							5
	Hantavirus pulmonary syndrome							
	Herpes B virus infection							
	Glanders							
	Brucellosis							2
	Venezuelan equine encephalitis							
	Hendra virus infection							
	Epidemic typhus							
Botulism					1		4	
Malaria					6		20	
Tularemia								
Lyme disease					1		25	
Lyssavirus infection(excluding rabies)								
Rift valley fever								
Melioidosis								
Legionellosis	3	4	1	2	128	23	1,858	
Leptospirosis					2		14	
Rocky mountain spotted fever								

Category	Diseases	Tokyo					Japan	
		43rd	44th	45th	46th	Cum 2020	46th	Cum 2020
V	Amebiasis	1	6	2		101	8	537
	Viral hepatitis(excluding hepatitis A and E)	1	1	1	2	55	4	219
	CRE infection	5	4	4	5	141	23	1,618
	Acute Flaccid Paralysis (excluding Acute poliomyelitis)					2		29
	Acute encephalitis(excluding JE and WNE)		2		1	31	4	444
	Cryptosporidiosis							6
	Creutzfeldt-Jakob disease		1		1	15	1	128
	Severe invasive streptococcal infections(TSLS)		1	1	2	87	4	666
	Acquired immunodeficiency syndrome (AIDS)	8	5	11	13	343	16	946
	Giardiasis					8		23
	Invasive <i>Haemophilus influenzae</i> disease		1			22	2	230
	Invasive meningococcal disease					2		13
	Invasive pneumococcal disease	2	2	4	7	141	32	1,433
	Varicella (limited to hospitalized case)	3	2	1	1	45	7	317
	Congenital rubella syndrome							1
	Syphilis	33	25	35	29	1,330	60	5,023
	Disseminated cryptococcosis					13	2	131
	Tetanus			1		8	1	95
	Vancomycin-resistant <i>S. aureus</i> infection							
	Vancomycin-resistant Enterococcus infection					6	2	120
Pertussis		3		1	256	14	2,823	
Rubella					27	1	97	
Measles					3		13	
MDRA infection				1	1	1	11	

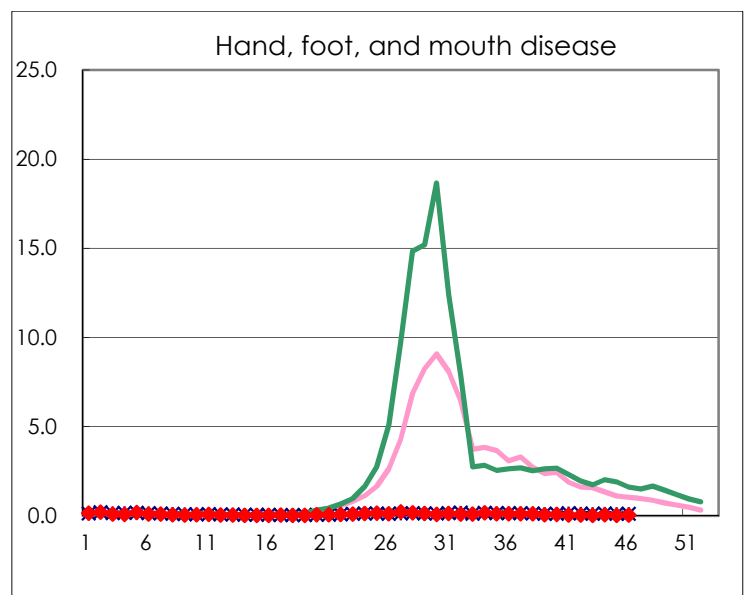
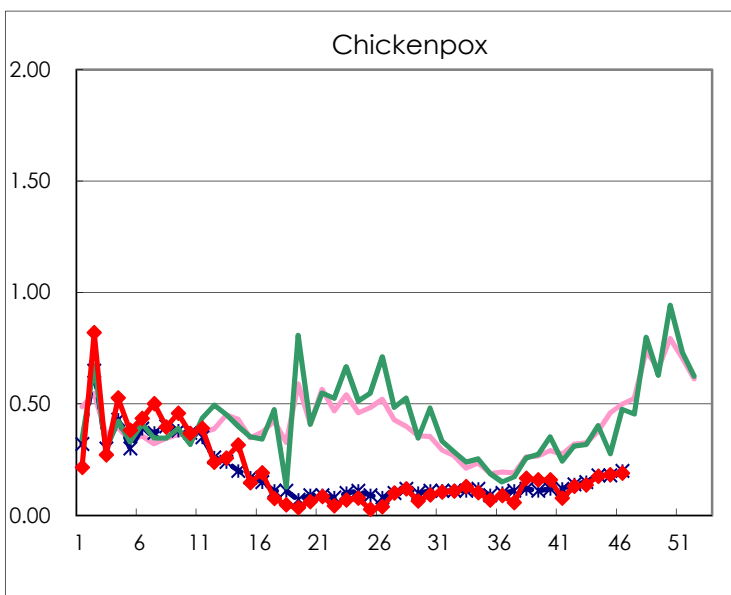
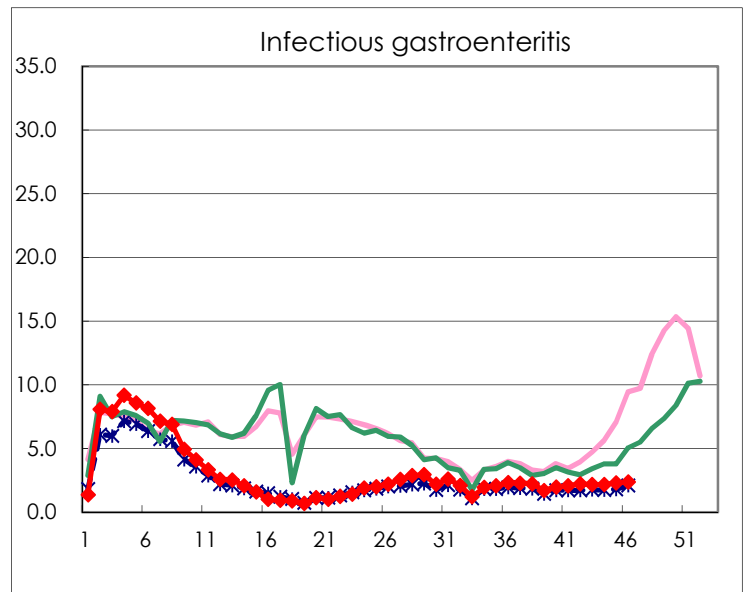
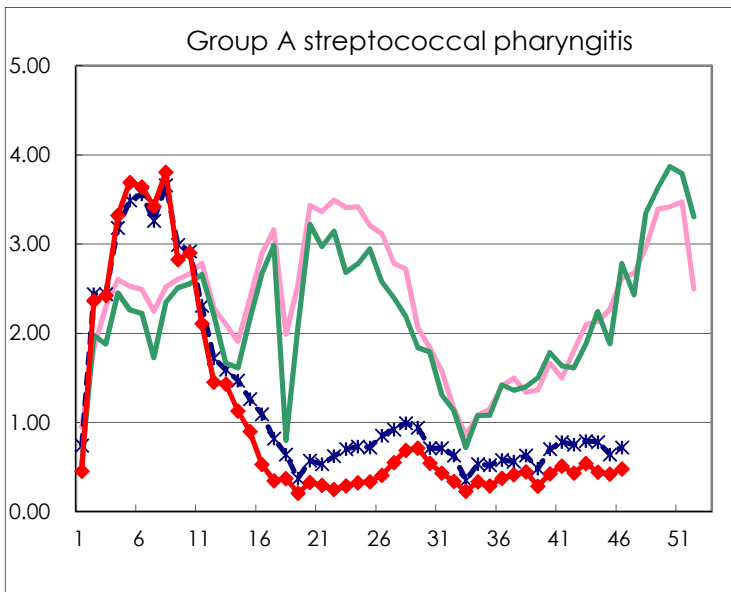
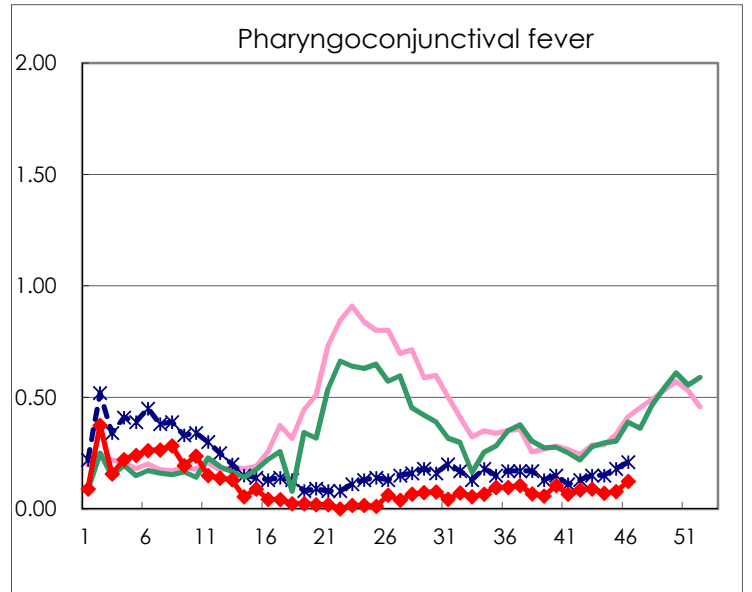
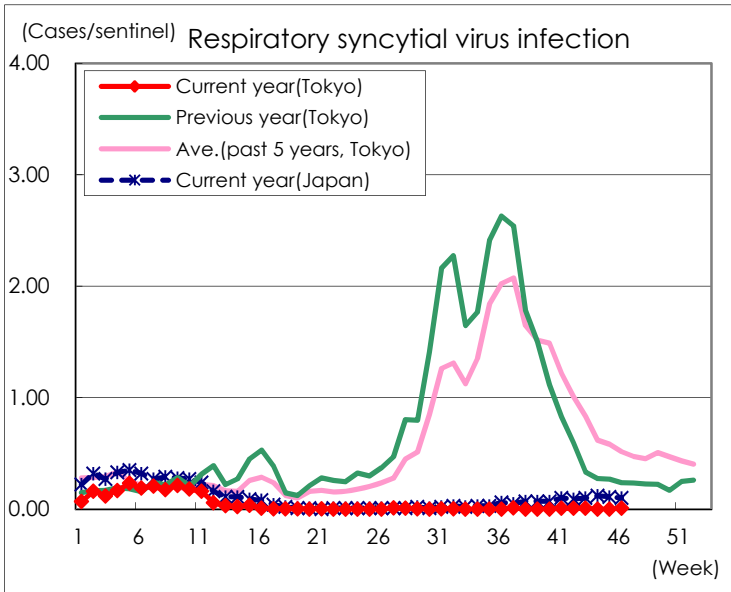
※ Designated infectious disease

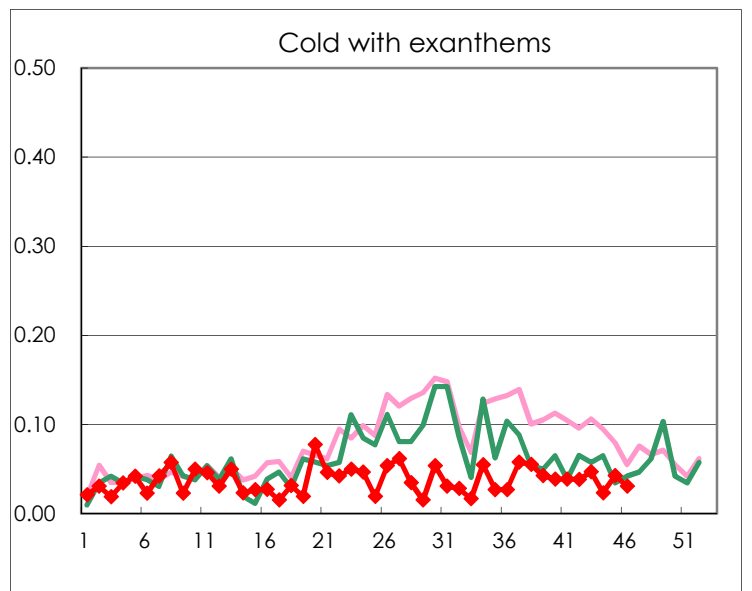
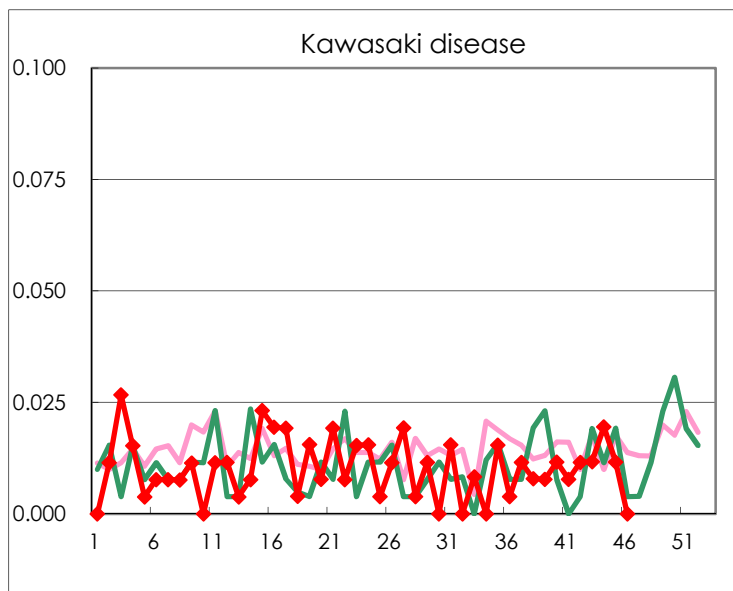
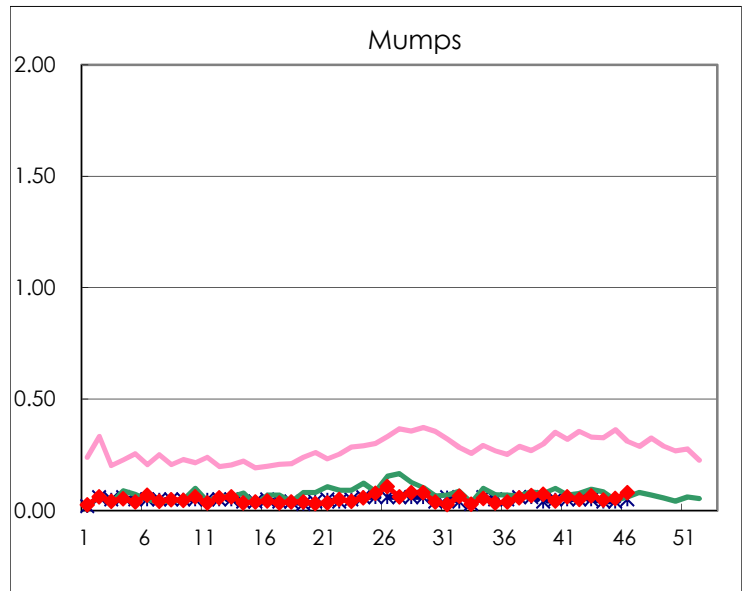
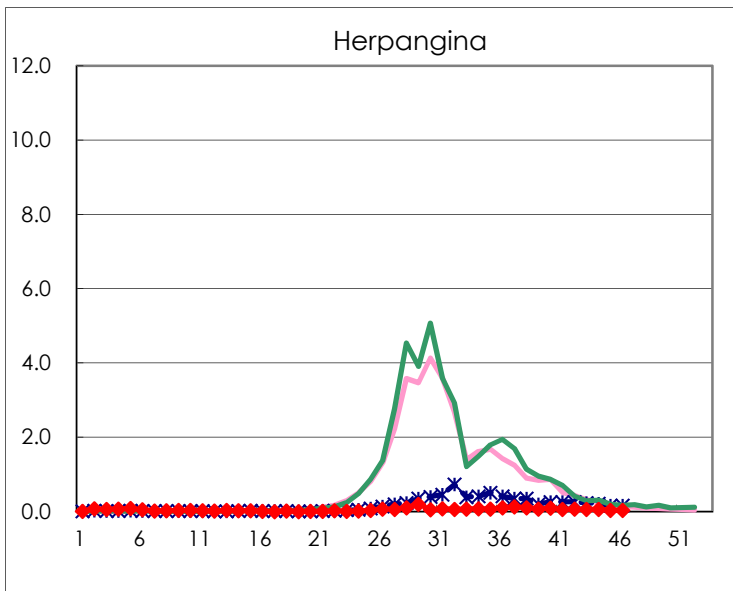
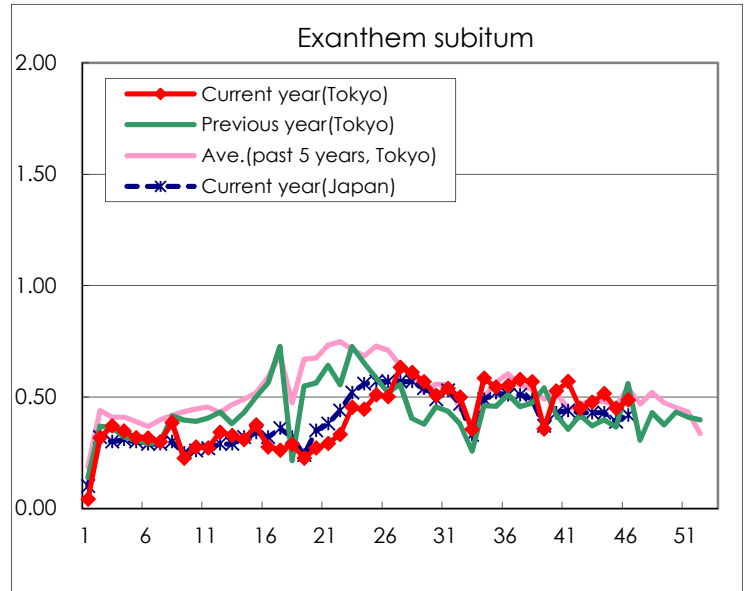
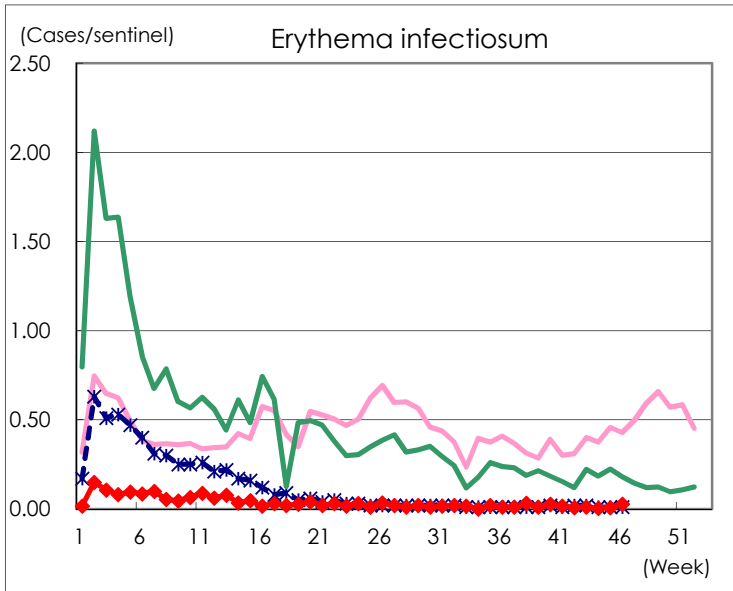
Number of patients with the diseases to be reported  
by the designated clinics and hospitals

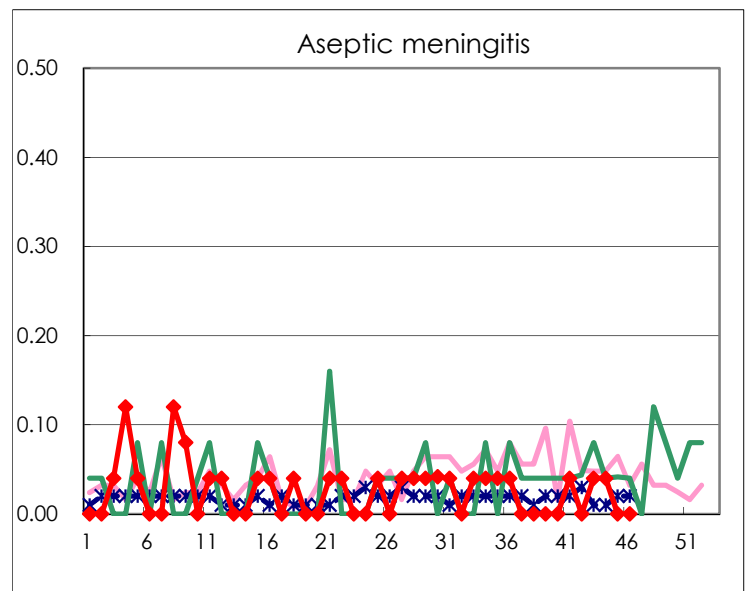
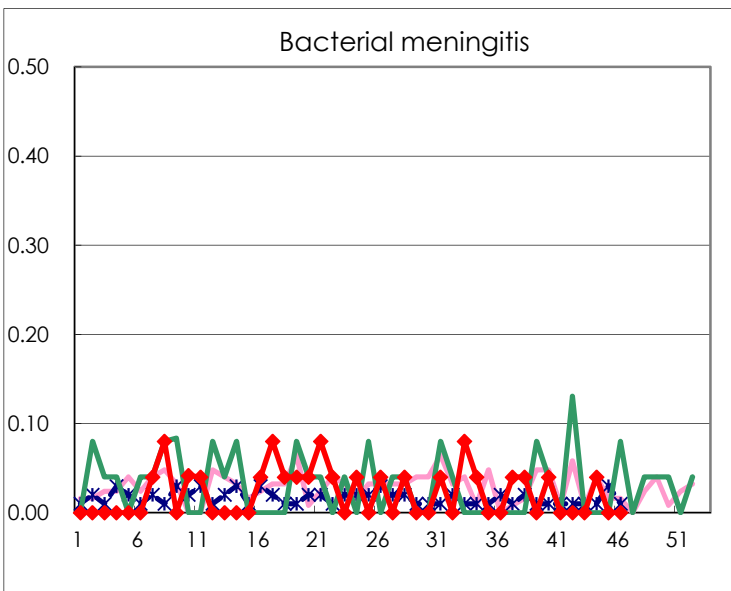
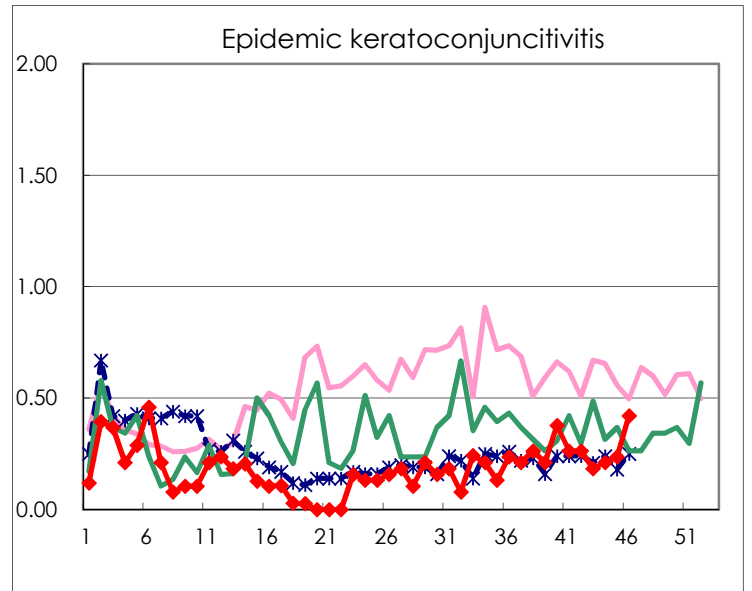
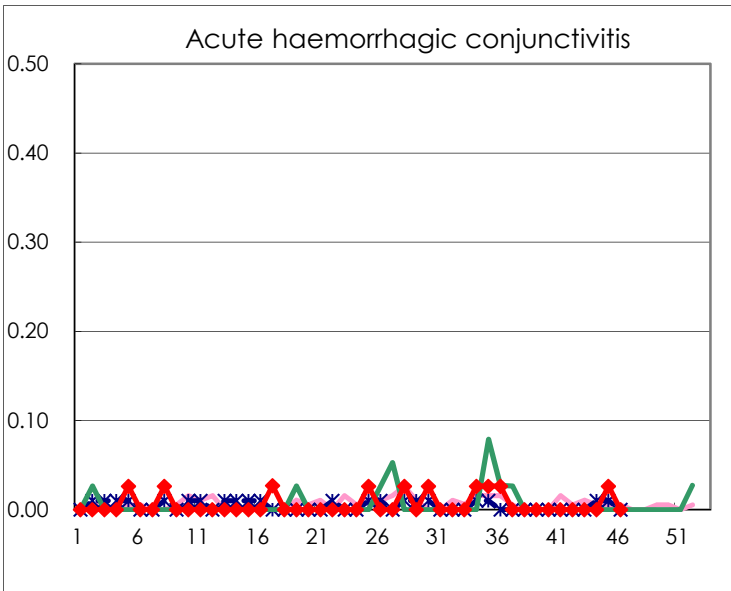
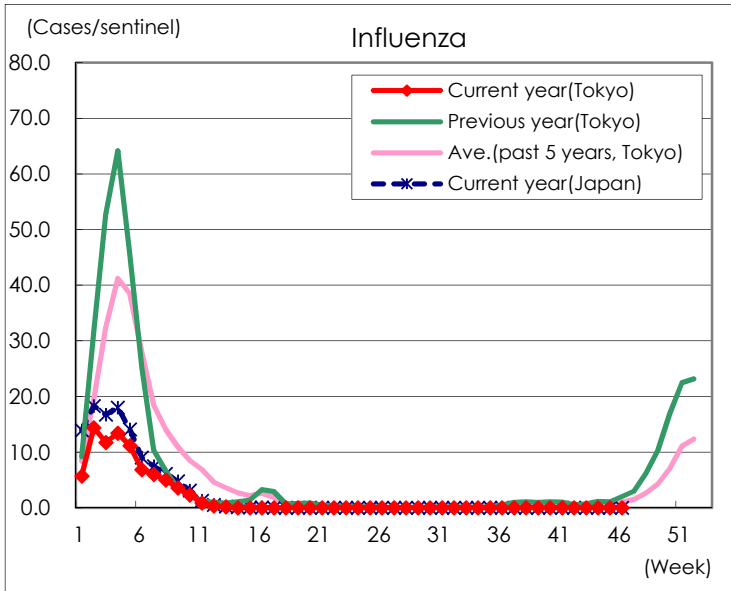
Diseases	Tokyo				
	43rd	44th	45th	46th	/sentinel
Respiratory syncytial virus infection	2			2	0.01
Pharyngoconjunctival fever	23	18	20	32	0.12
Group A streptococcal pharyngitis	138	113	108	124	0.48
Infectious gastroenteritis	551	557	590	615	2.37
Chickenpox	35	45	47	49	0.19
Hand, foot, and mouth disease	3	15	7	8	0.03
Erythema infectiosum	3	1	2	7	0.03
Exanthem subitum	122	132	116	126	0.49
Herpangina	16	15	10	8	0.03
Mumps	17	12	14	21	0.08
Kawasaki disease	3	5	3		
Cold with exanthsms	12	6	11	8	0.03
Influenza	2	4	4	2	0.00
Acute hemorrhagic conjunctivitis			1		
Epidemic keratoconjunctivitis	7	8	9	16	0.42
Bacterial meningitis		1			
Aseptic meningitis	1	1			
Mycoplasma pneumonia		2	1	6	0.25
Chlamydial pneumonia (excluding psittacosis)			1		
Infectious gastroenteritis (only by Rotavirus)					
Influenza-Associated Hospitalizations					

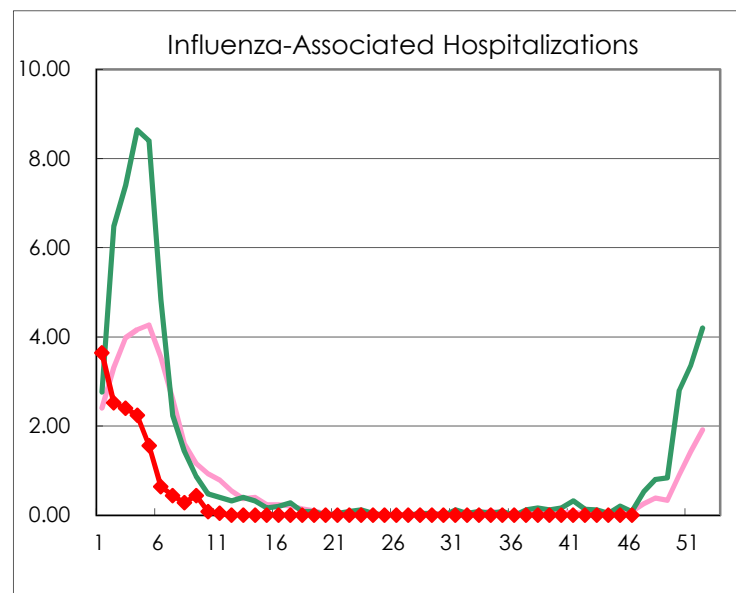
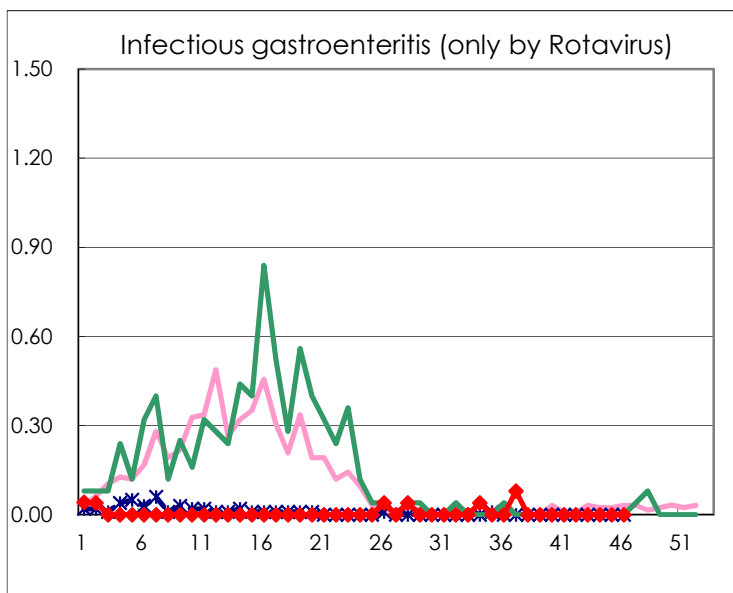
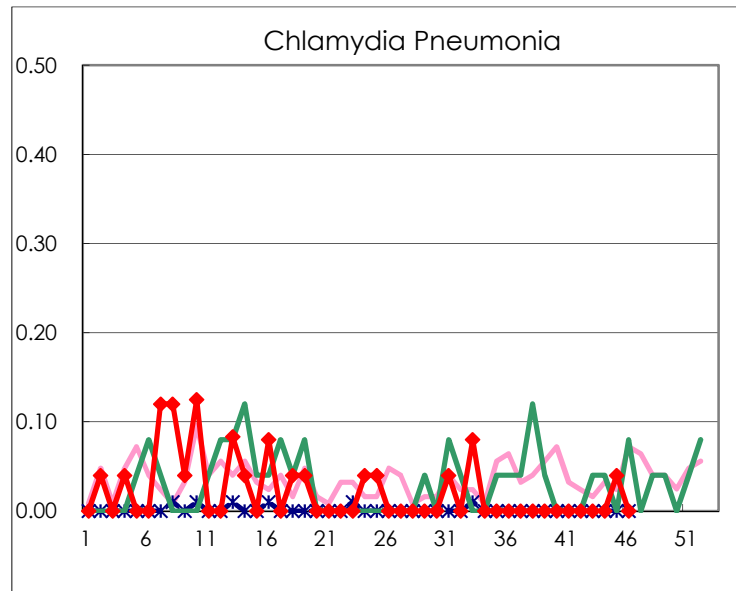
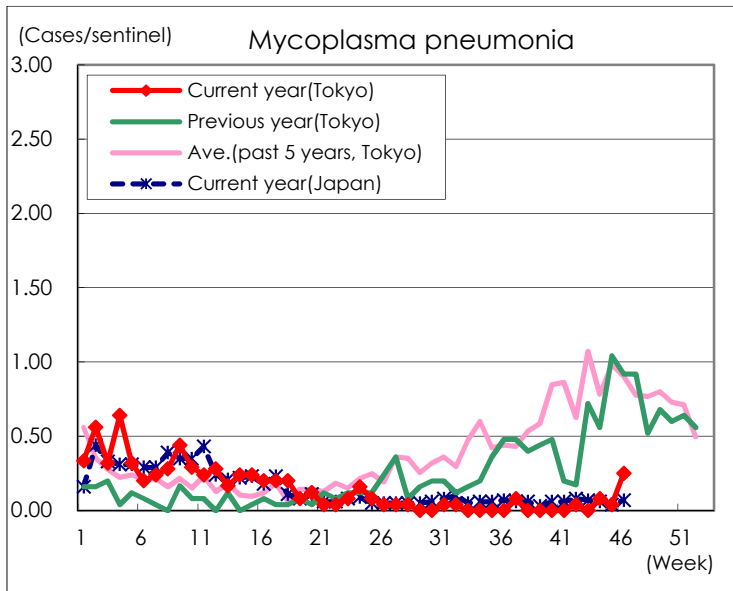
( Blank means 0. )

# Disease Trend Graph (weekly reported cases per sentinel in comparison)









Number of sentinel facilities for weekly reporting		
Types of sentinels	Number of sentinels	Sentinels having reported
Pediatric	264	259
Influenza	419	411
Ophthalmic	39	38
Specially-designated	25	24