

**26 November 2020 / Number 47**

**( 11/16 ~ 11/22 )**

### Surveillance System in Tokyo, Japan

The infectious diseases which all physicians must report

All physicians must report to health centers the incidence of the diseases which are shown at page one. Health centers electronically report the individual cases to Tokyo Metropolitan Infectious Disease Surveillance Center.

The infectious diseases required to be reported by the sentinels

The numbers of patients who visit the sentinel clinics or hospitals during a week are reported to health centers in Tokyo. And they electronically report the numbers to Tokyo Metropolitan Infectious Disease Surveillance Center. We have about 500 sentinel clinics and hospitals in Tokyo.

Tokyo Metropolitan Institute of Public Health

TEL:81-3-3363-3213 FAX:81-3-5332-7365

e-mail:[www@tokyo-eiken.go.jp](mailto:www@tokyo-eiken.go.jp)

URL:[idsc.tokyo-eiken.go.jp/](http://idsc.tokyo-eiken.go.jp/)

---

Number of patients with the diseases which all physicians must report

Category	Diseases	Tokyo				Japan		
		44th	45th	46th	47th	Cum 2020	47th	Cum 2020
I	Ebola hemorrhagic fever							
	Crimean-Congo hemorrhagic fever							
	Smallpox							
	South American hemorrhagic fever							
	Plague							
	Marburg disease							
	Lassa fever							
II	Acute poliomyelitis							
	Tuberculosis	50	43	44	30	2,197	210	15,268
	Diphtheria							
	Severe Acute Respiratory Syndrome(SARS)							
	Middle East Respiratory Syndrome (MERS)							
	Avian influenza H5N1							
	Avian influenza H7N9							
※	Novel Coronavirus 2019 infection							
III	Cholera							1
	Shigellosis					11		60
	Enterohemorrhagic Escherichia coli infection	5	3	6	5	309	39	2,906
	Typhoid fever					2		21
	Paratyphoid fever					1		7
IV	Hepatitis E	2	1	2	3	101	7	396
	West Nile fever							
	Hepatitis A	1		1		23		114
	Echinococcosis						2	19
	Yellow fever							
	Psittacosis							5
	Omsk hemorrhagic fever							
	Relapsing fever							15
	Kyasanur forest disease							
	Q fever							
	Rabies							1
	Coccidioidomycosis					1		4
	Monkeypox							
	Zika virus infection							1
	Severe Fever with Thrombocytopenia Syndrome							73
	Hemorrhagic fever with renal syndrome							
	Western equine encephalitis							
	Tick-borne encephalitis							
	Anthrax							
	Chikungunya fever							3
	Scrub typhus(Tsutsugamushi disease)	1		1	1	9	32	189
	Dengue fever					13		42
	Eastern equine encephalitis							
	Avian influenza (excluding H5N1 and H7N9)							
	Nipah virus infection							
	Japanese spotted fever						1	406
	Japanese encephalitis							5
	Hantavirus pulmonary syndrome							
	Herpes B virus infection							
	Glanders							
	Brucellosis							2
	Venezuelan equine encephalitis							
	Hendra virus infection							
Epidemic typhus								
Botulism					1		4	
Malaria					6		20	
Tularemia								
Lyme disease					1	1	26	
Lyssavirus infection(excluding rabies)								
Rift valley fever								
Melioidosis								
Legionellosis	4	1	3	4	133	26	1,891	
Leptospirosis					2	1	16	
	Rocky mountain spotted fever							

Category	Diseases	Tokyo					Japan	
		44th	45th	46th	47th	Cum 2020	47th	Cum 2020
V	Amebiasis	6	2		1	103	7	549
	Viral hepatitis(excluding hepatitis A and E)	1	1	2		56	2	222
	CRE infection	4	4	5	6	148	25	1,660
	Acute Flaccid Paralysis (excluding Acute poliomyelitis)					2		29
	Acute encephalitis(excluding JE and WNE)	2		1		31	3	451
	Cryptosporidiosis							6
	Creutzfeldt-Jakob disease	1		1		15	2	130
	Severe invasive streptococcal infections(TSLS)	1	1	2	4	91	9	678
	Acquired immunodeficiency syndrome (AIDS)	5	11	14	6	350	10	964
	Giardiasis					8		23
	Invasive <i>Haemophilus influenzae</i> disease	1			1	23	2	233
	Invasive meningococcal disease					2		14
	Invasive pneumococcal disease	2	4	7	4	145	26	1,469
	Varicella (limited to hospitalized case)	2	1	1		46	6	327
	Congenital rubella syndrome							1
	Syphilis	26	36	31	23	1,361	65	5,127
	Disseminated cryptococcosis				2	16	2	139
	Tetanus		1			8	1	96
	Vancomycin-resistant <i>S. aureus</i> infection							
	Vancomycin-resistant Enterococcus infection					6		120
Pertussis	3		1	1	258	6	2,837	
Rubella				1	28	1	99	
Measles					3		13	
MDRA infection			1		1		11	

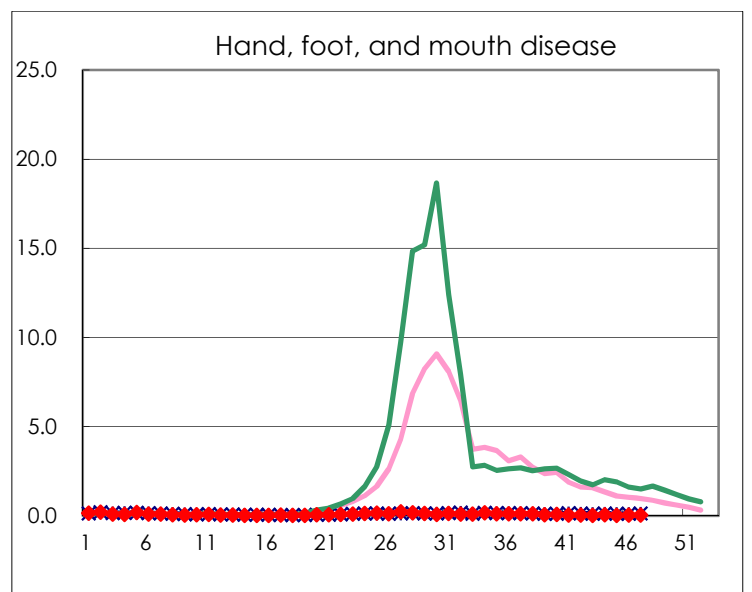
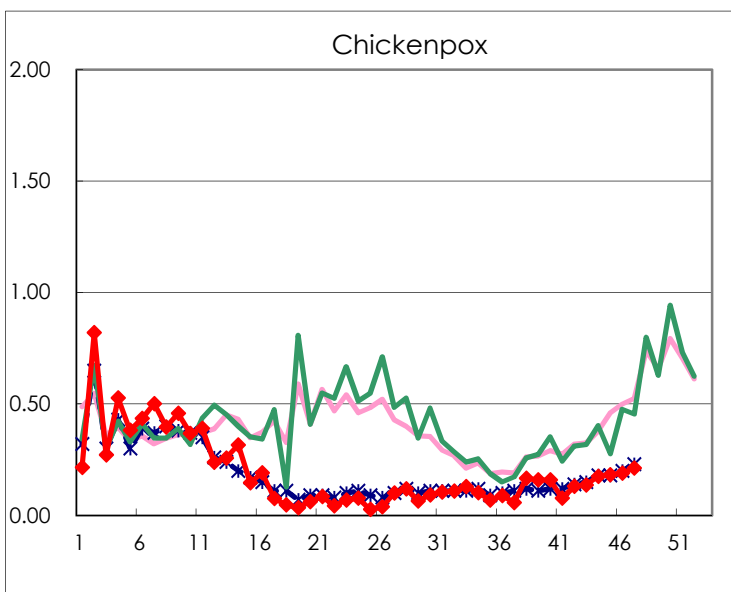
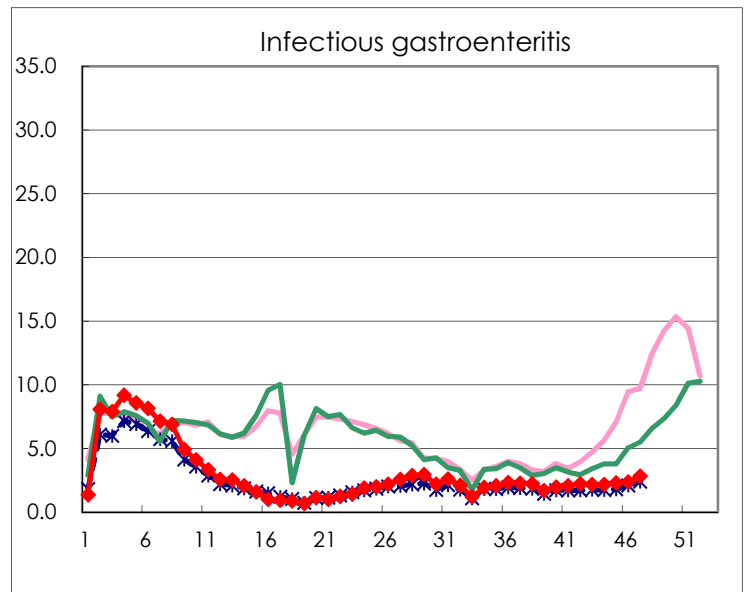
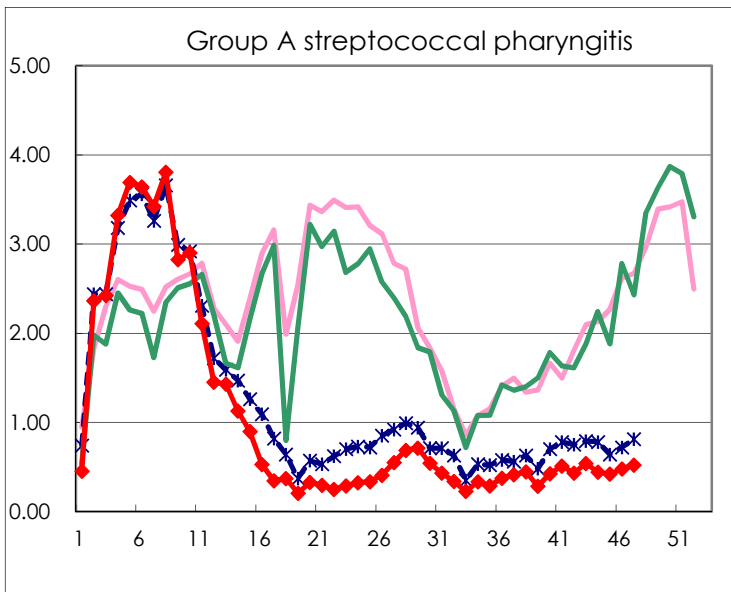
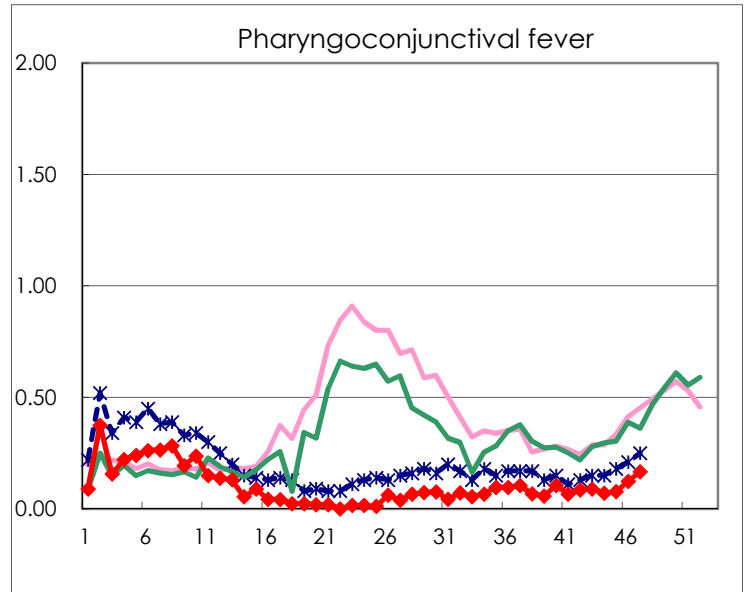
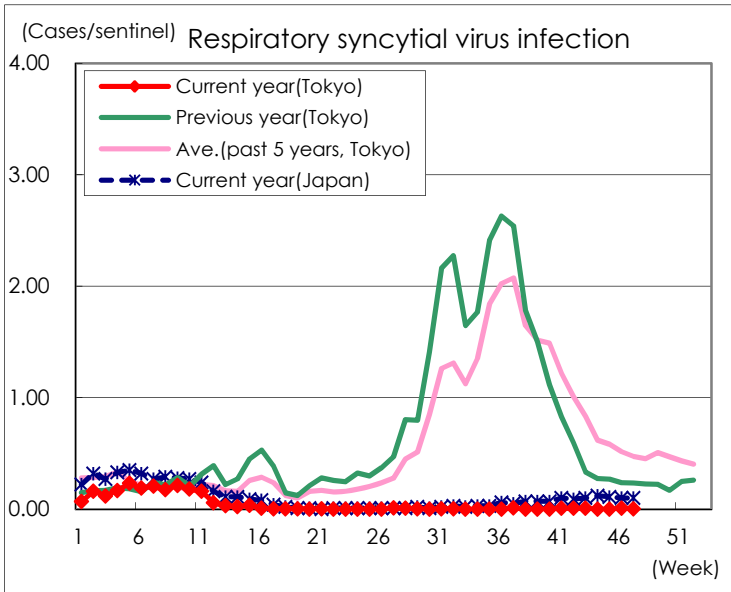
※ Designated infectious disease

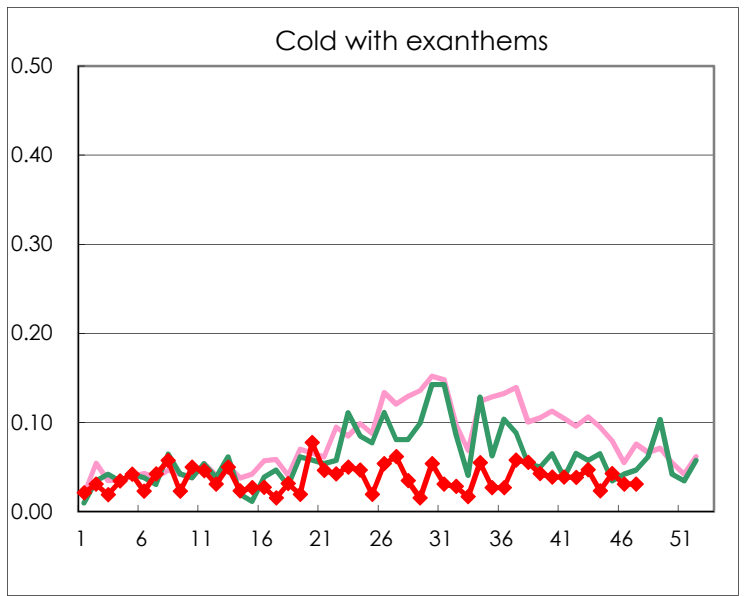
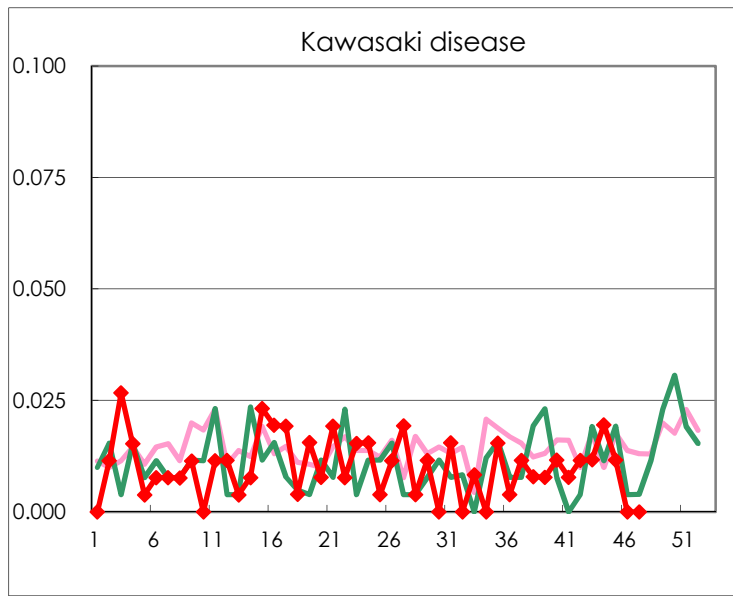
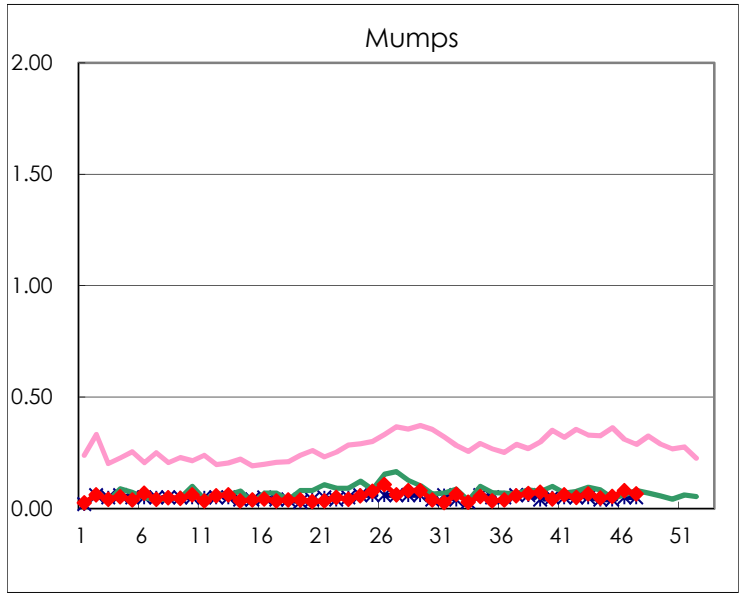
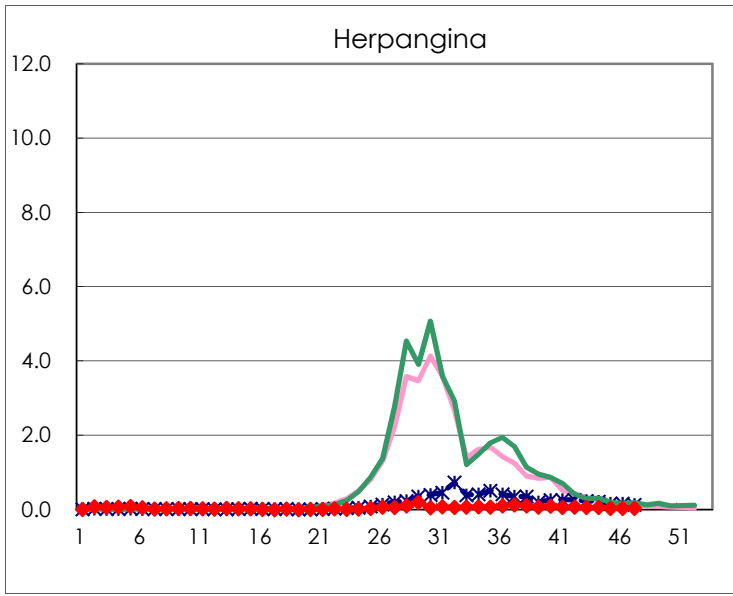
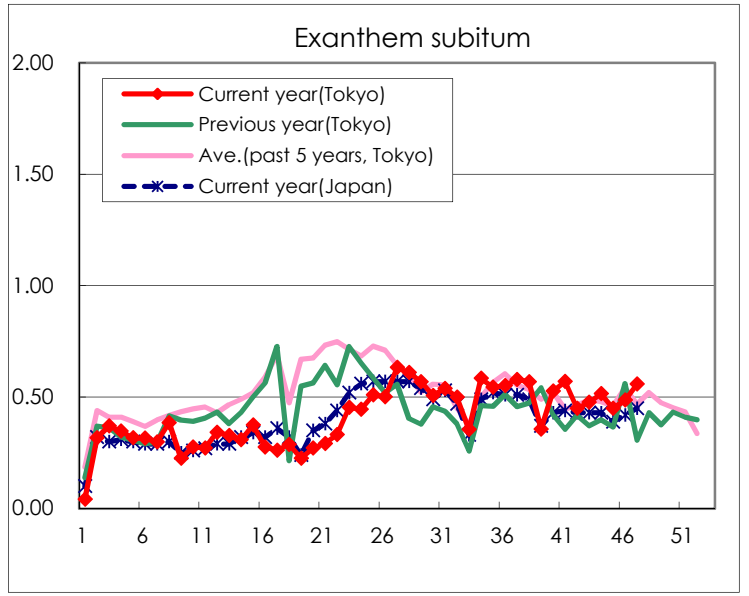
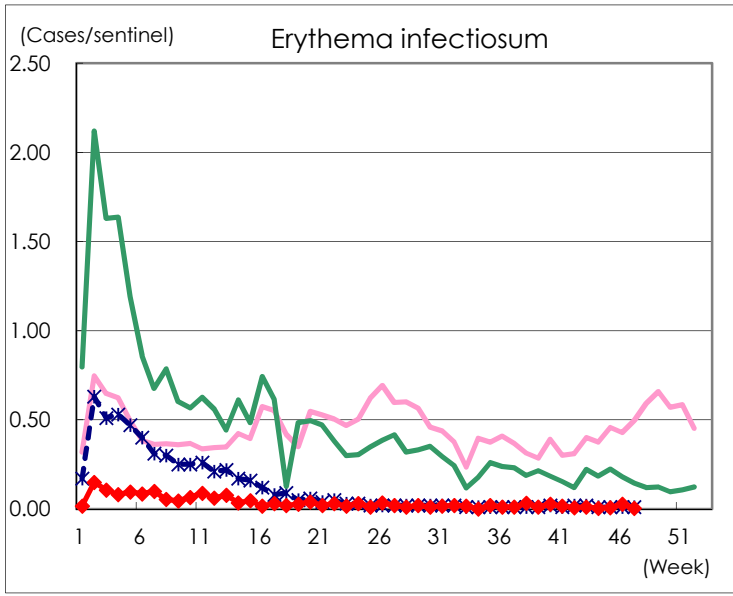
Number of patients with the diseases to be reported  
by the designated clinics and hospitals

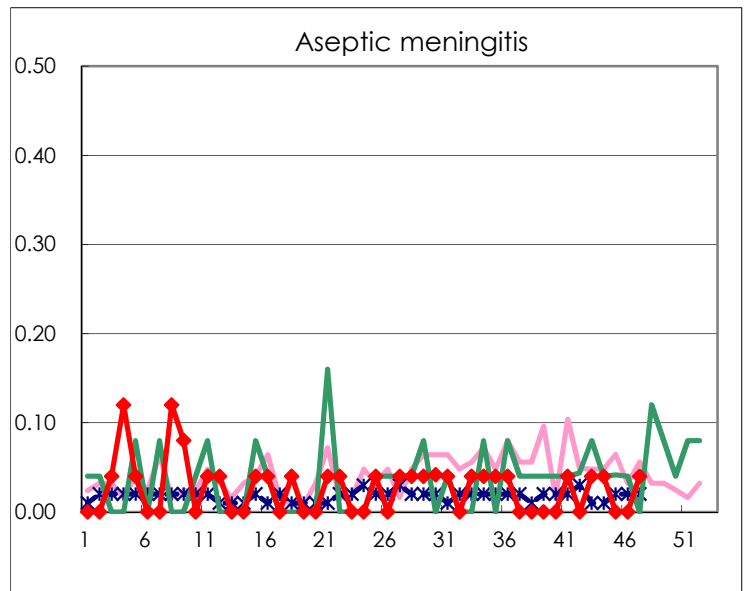
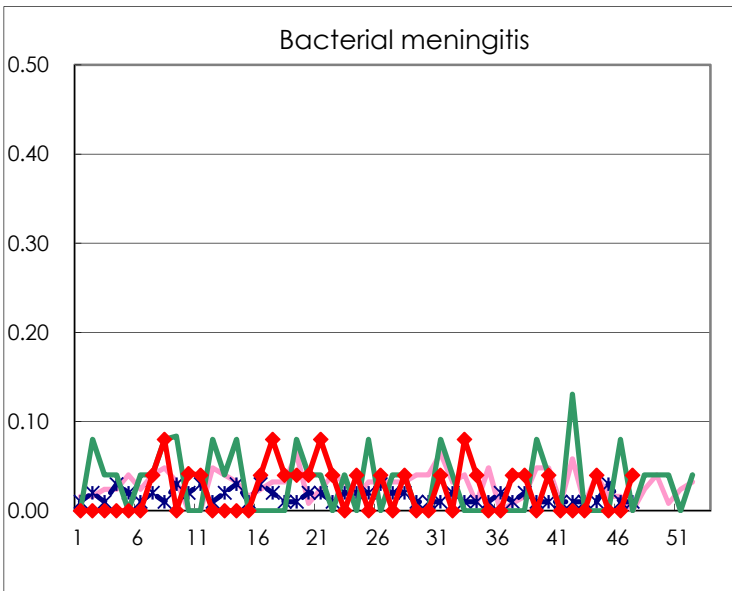
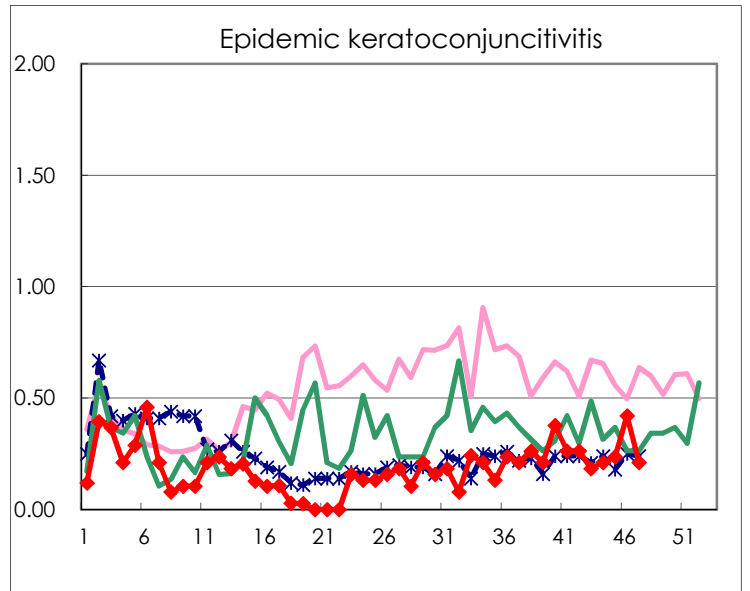
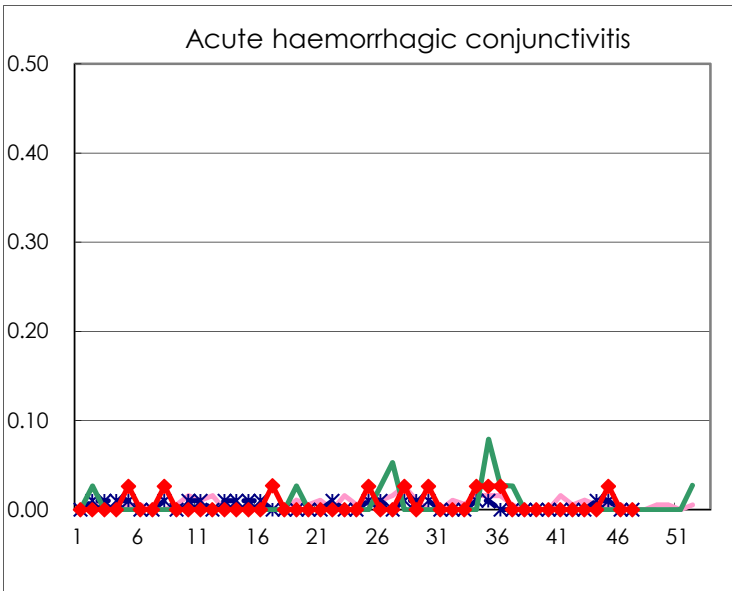
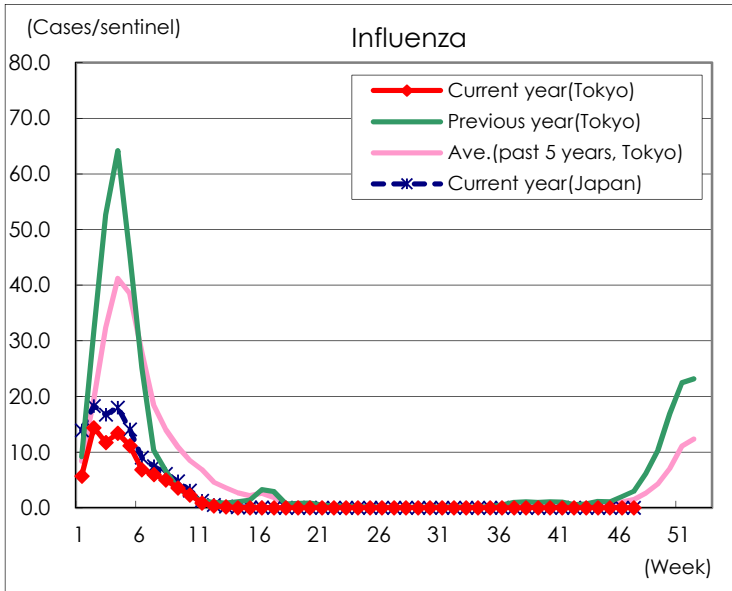
Diseases	Tokyo				
	44th	45th	46th	47th	/sentinel
Respiratory syncytial virus infection			2	1	0.00
Pharyngoconjunctival fever	18	20	32	43	0.17
Group A streptococcal pharyngitis	113	108	124	134	0.52
Infectious gastroenteritis	557	590	615	729	2.83
Chickenpox	45	47	49	55	0.21
Hand, foot, and mouth disease	15	7	8	11	0.04
Erythema infectiosum	1	2	7	1	0.00
Exanthem subitum	132	116	126	144	0.56
Herpangina	15	10	8	8	0.03
Mumps	12	14	21	17	0.07
Kawasaki disease	5	3			
Cold with exanths	6	11	8	8	0.03
Influenza	4	4	2	5	0.01
Acute hemorrhagic conjunctivitis		1			
Epidemic keratoconjunctivitis	8	9	16	8	0.21
Bacterial meningitis	1			1	0.04
Aseptic meningitis	1			1	0.04
Mycoplasma pneumonia	2	1	6		
Chlamydial pneumonia (excluding psittacosis)		1			
Infectious gastroenteritis (only by Rotavirus)					
Influenza-Associated Hospitalizations					

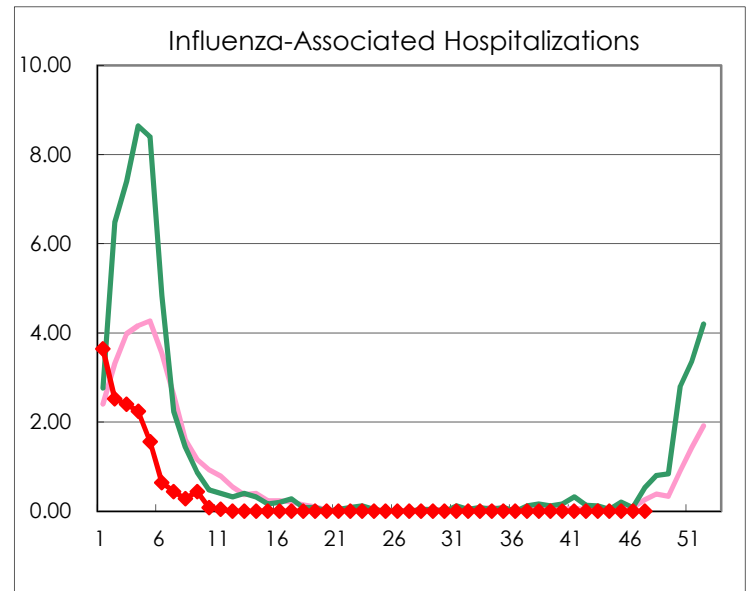
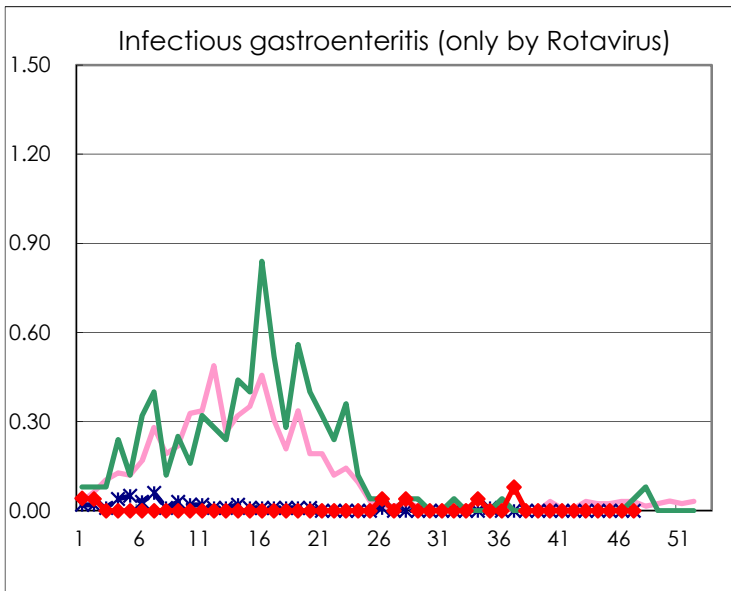
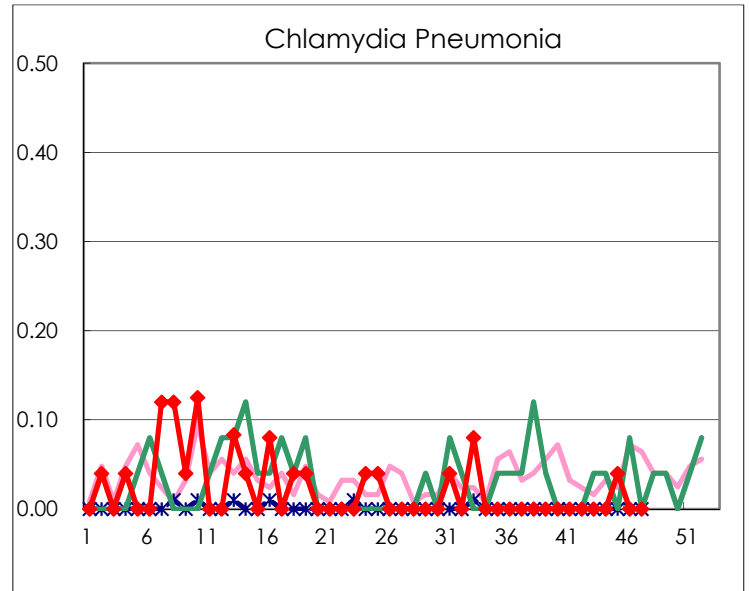
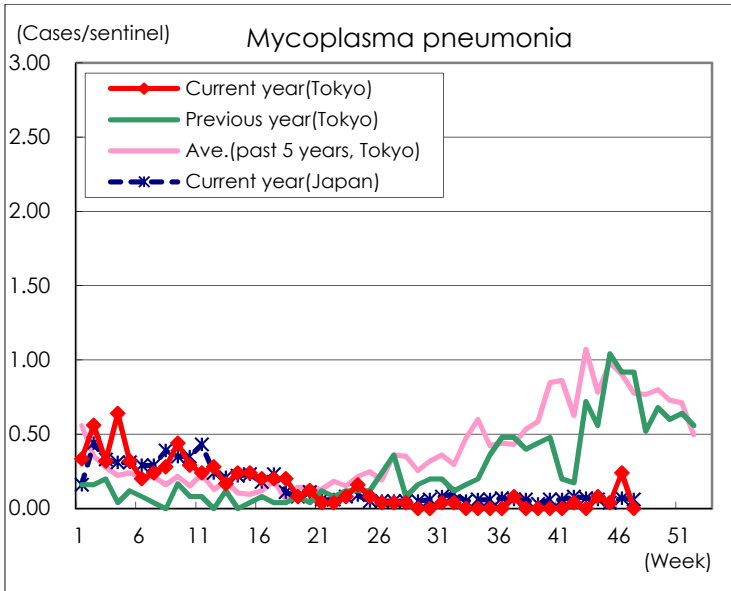
( Blank means 0. )

# Disease Trend Graph (weekly reported cases per sentinel in comparison)









Number of sentinel facilities for weekly reporting		
Types of sentinels	Number of sentinels	Sentinels having reported
Pediatric	264	258
Influenza	419	406
Ophthalmic	39	38
Specially-designated	25	25