

10 December 2020 / Number 49

(11/30 ~ 12/6)

Surveillance System in Tokyo, Japan

The infectious diseases which all physicians must report

All physicians must report to health centers the incidence of the diseases which are shown at page one. Health centers electronically report the individual cases to Tokyo Metropolitan Infectious Disease Surveillance Center.

The infectious diseases required to be reported by the sentinels

The numbers of patients who visit the sentinel clinics or hospitals during a week are reported to health centers in Tokyo. And they electronically report the numbers to Tokyo Metropolitan Infectious Disease Surveillance Center. We have about 500 sentinel clinics and hospitals in Tokyo.

Tokyo Metropolitan Institute of Public Health

TEL:81-3-3363-3213 FAX:81-3-5332-7365

e-mail:www@tokyo-eiken.go.jp

URL:idsc.tokyo-eiken.go.jp/

Number of patients with the diseases which all physicians must report

Category	Diseases	Tokyo					Japan	
		46th	47th	48th	49th	Cum 2020	49th	Cum 2020
I	Ebola hemorrhagic fever							
	Crimean-Congo hemorrhagic fever							
	Smallpox							
	South American hemorrhagic fever							
	Plague							
	Marburg disease							
	Lassa fever							
II	Acute poliomyelitis							
	Tuberculosis	49	36	29	39	2,281	242	15,883
	Diphtheria							
	Severe Acute Respiratory Syndrome(SARS)							
	Middle East Respiratory Syndrome (MERS)							
	Avian influenza H5N1							
	Avian influenza H7N9							
※	Novel Coronavirus 2019 infection							
III	Cholera							1
	Shigellosis					11	1	86
	Enterohemorrhagic Escherichia coli infection	6	5	5	4	318	26	2,959
	Typhoid fever					2		21
	Paratyphoid fever					1		7
IV	Hepatitis E	2	4	3	2	107	5	414
	West Nile fever							
	Hepatitis A	1				23	1	117
	Echinococcosis							20
	Yellow fever							
	Psittacosis							5
	Omsk hemorrhagic fever							
	Relapsing fever							15
	Kyasanur forest disease							
	Q fever							
	Rabies							1
	Coccidioidomycosis			2		3		6
	Monkeypox							
	Zika virus infection							1
	Severe Fever with Thrombocytopenia Syndrome						1	75
	Hemorrhagic fever with renal syndrome							
	Western equine encephalitis							
	Tick-borne encephalitis							
	Anthrax							
	Chikungunya fever							3
	Scrub typhus(Tsutsugamushi disease)	1	1	2	1	12	57	318
	Dengue fever					13	1	44
	Eastern equine encephalitis							
	Avian influenza (excluding H5N1 and H7N9)							
	Nipah virus infection							
	Japanese spotted fever						8	417
	Japanese encephalitis							5
	Hantavirus pulmonary syndrome							
	Herpes B virus infection							
	Glanders							
	Brucellosis							2
	Venezuelan equine encephalitis							
	Hendra virus infection							
	Epidemic typhus							
	Botulism					1		4
	Malaria					6		20
	Tularemia							
	Lyme disease					1		26
	Lyssavirus infection(excluding rabies)							
	Rift valley fever							
Melioidosis		1			1		1	
Legionellosis	3	4	1	1	135	20	1,943	
Leptospirosis					2		16	
Rocky mountain spotted fever								

Category	Diseases	Tokyo					Japan	
		46th	47th	48th	49th	Cum 2020	49th	Cum 2020
V	Amebiasis		1	3		106	1	569
	Viral hepatitis(excluding hepatitis A and E)	2		1		58	1	229
	CRE infection	5	6	5	4	158	28	1,747
	Acute Flaccid Paralysis (excluding Acute poliomyelitis)			1		3		30
	Acute encephalitis(excluding JE and WNE)	1				31	3	463
	Cryptosporidiosis							6
	Creutzfeldt-Jakob disease	1		1		16	1	138
	Severe invasive streptococcal infections(TSLS)	2	4	1		92	4	697
	Acquired immunodeficiency syndrome (AIDS)	14	6	3	10	363	14	1,009
	Giardiasis					8		23
	Invasive <i>Haemophilus influenzae</i> disease		1			23		238
	Invasive meningococcal disease					2		14
	Invasive pneumococcal disease	7	5	2	2	150	17	1,538
	Varicella (limited to hospitalized case)	1		1	1	48	2	339
	Congenital rubella syndrome							1
	Syphilis	32	30	28	28	1,427	74	5,379
	Disseminated cryptococcosis	1	2			17	1	145
	Tetanus					8		100
	Vancomycin-resistant <i>S. aureus</i> infection							
	Vancomycin-resistant Enterococcus infection					6	1	122
Pertussis	1	1			258	16	2,879	
Rubella		1			28		99	
Measles					3		13	
MDRA infection							10	

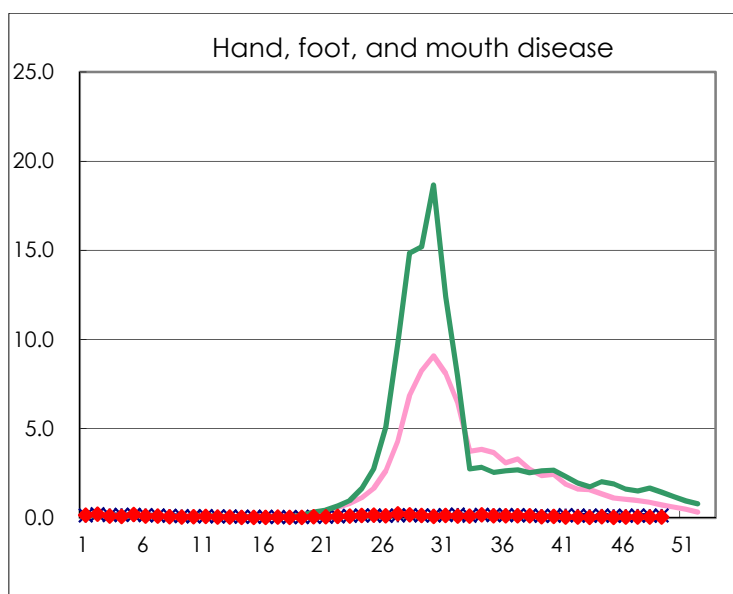
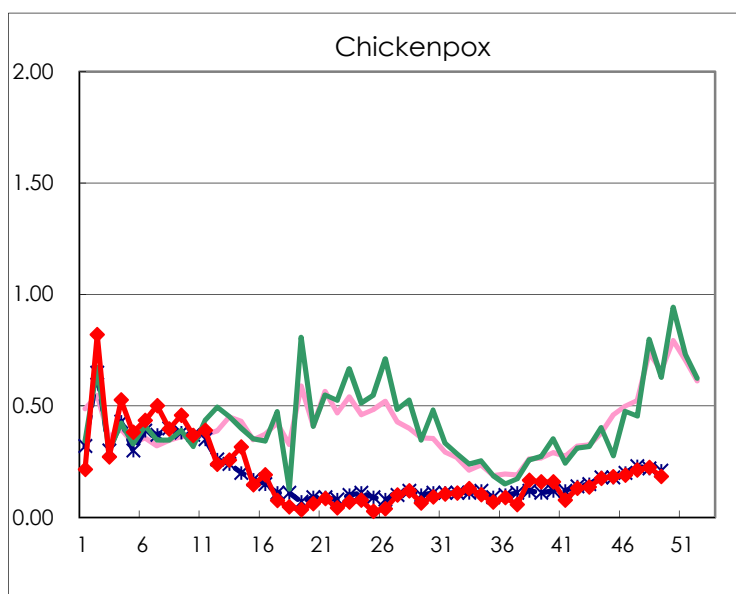
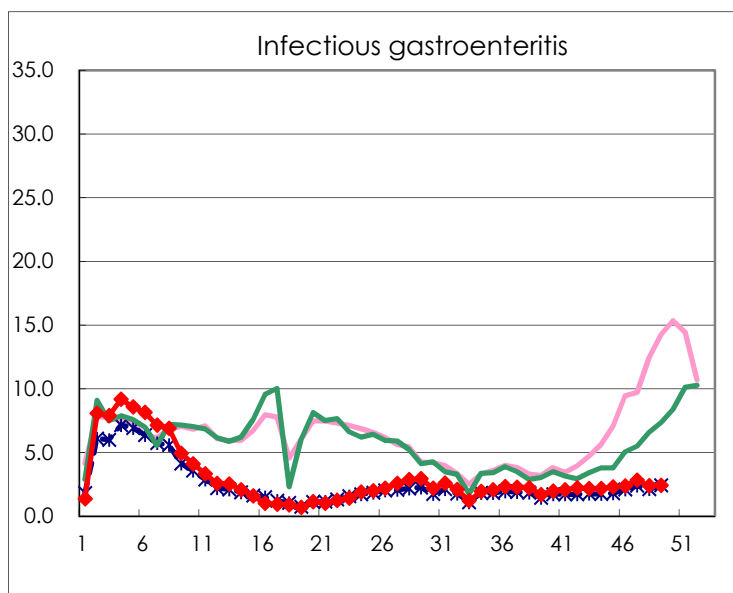
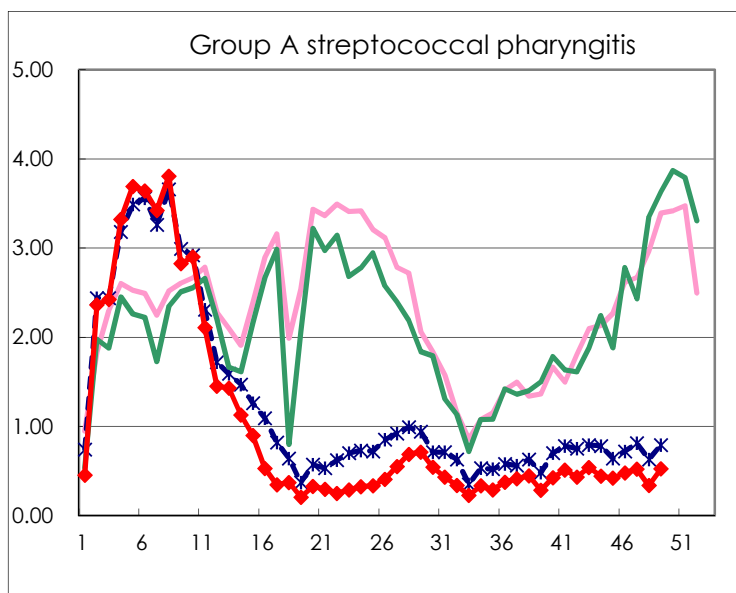
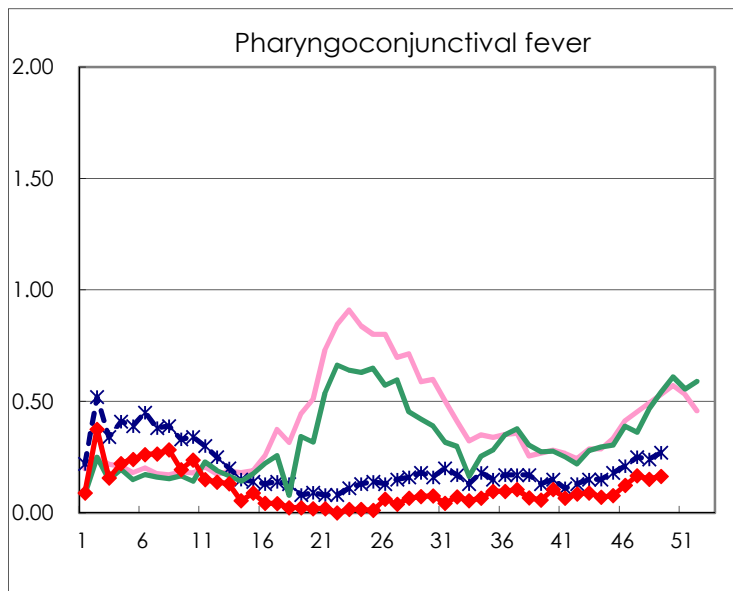
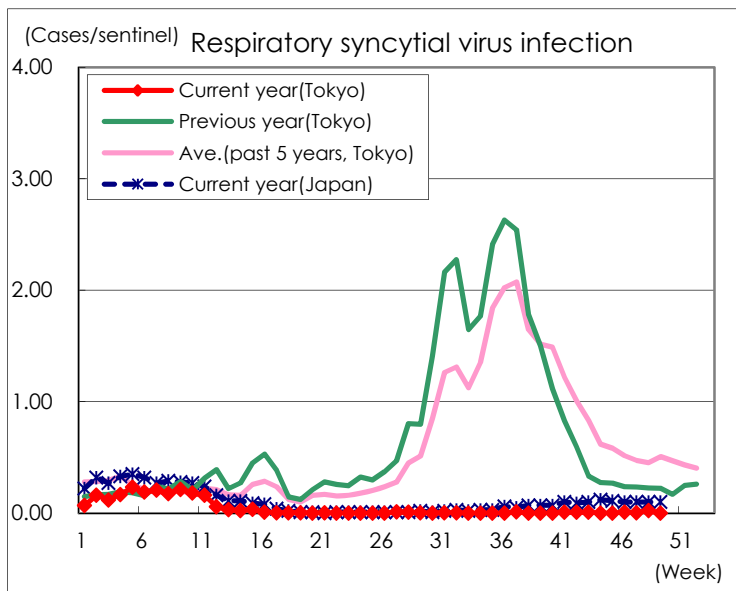
※ Designated infectious disease

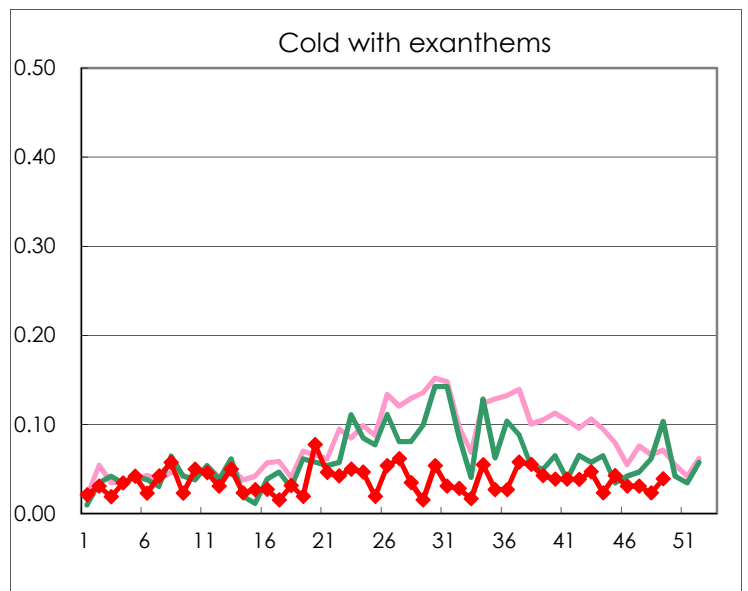
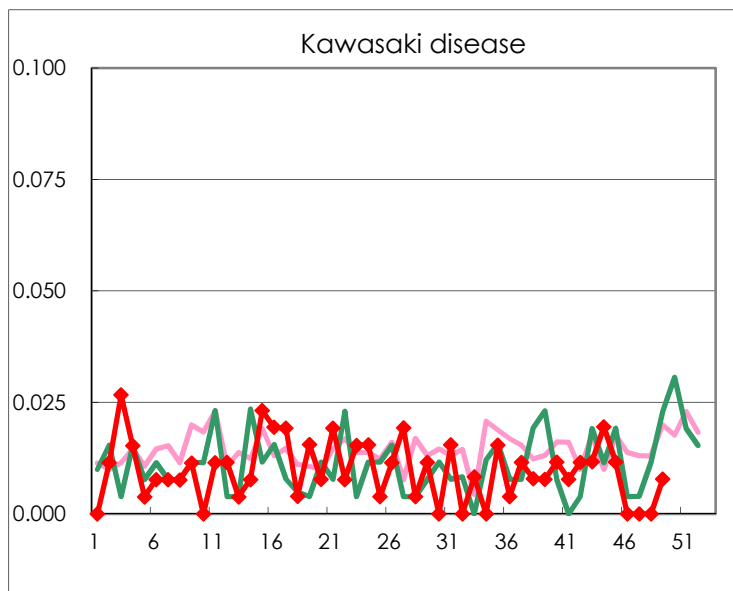
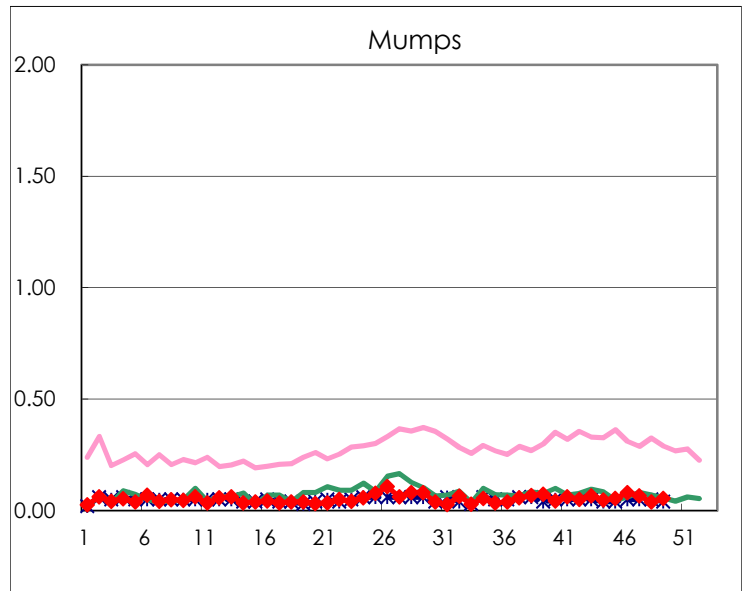
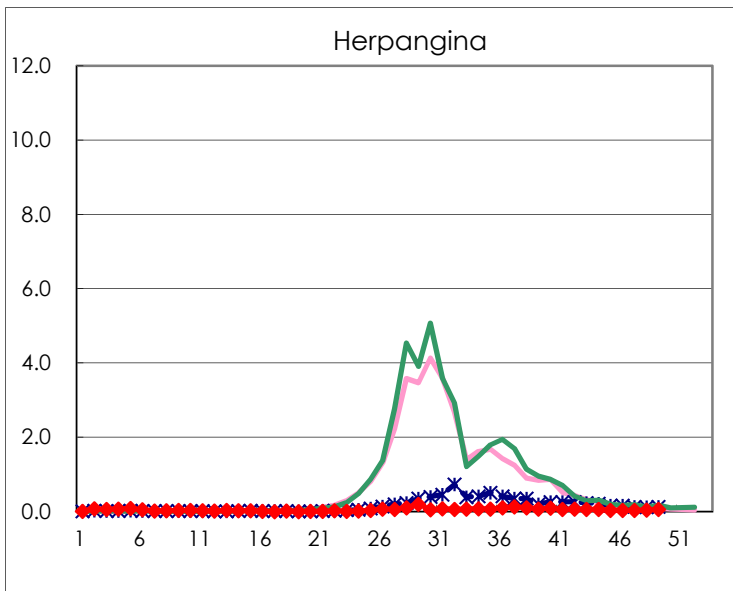
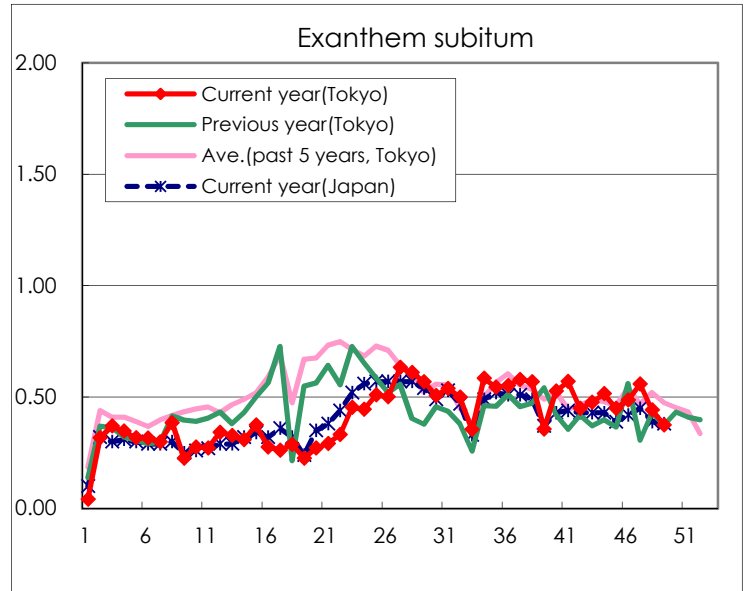
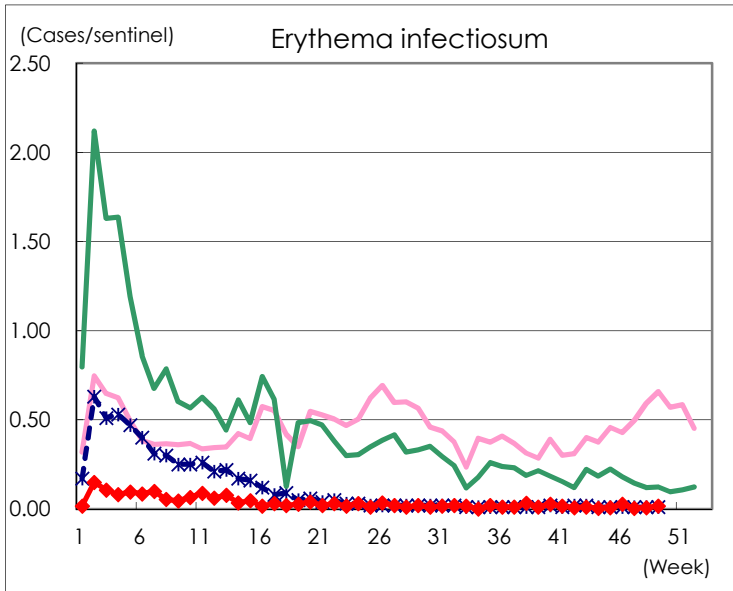
Number of patients with the diseases to be reported
by the designated clinics and hospitals

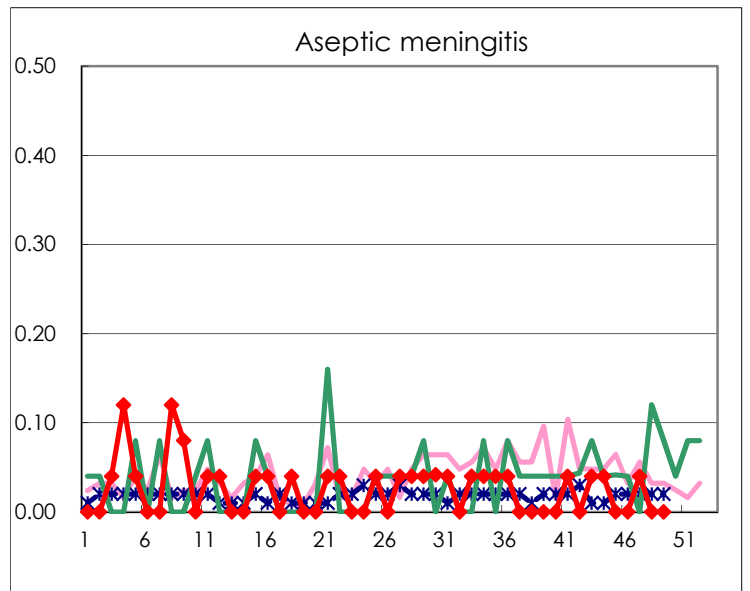
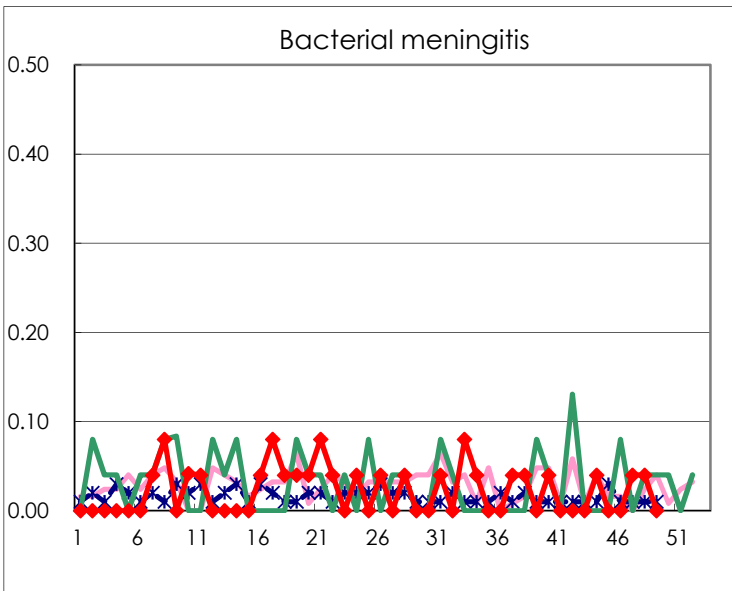
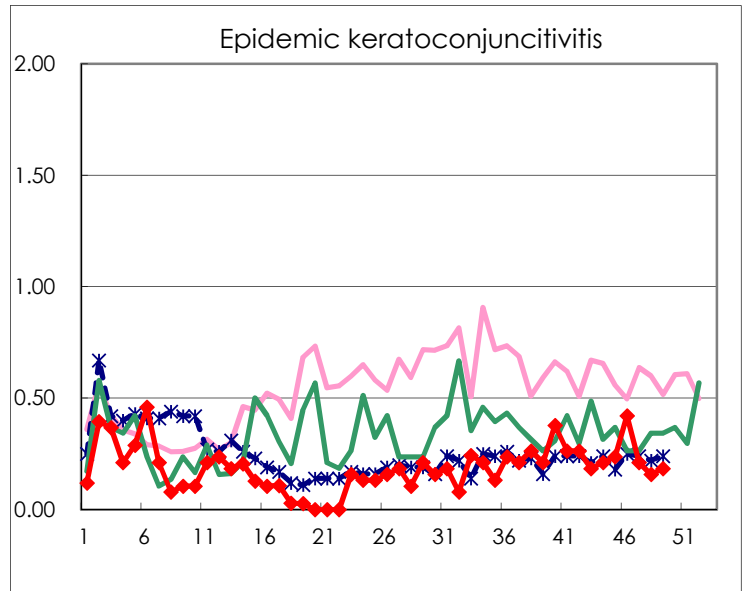
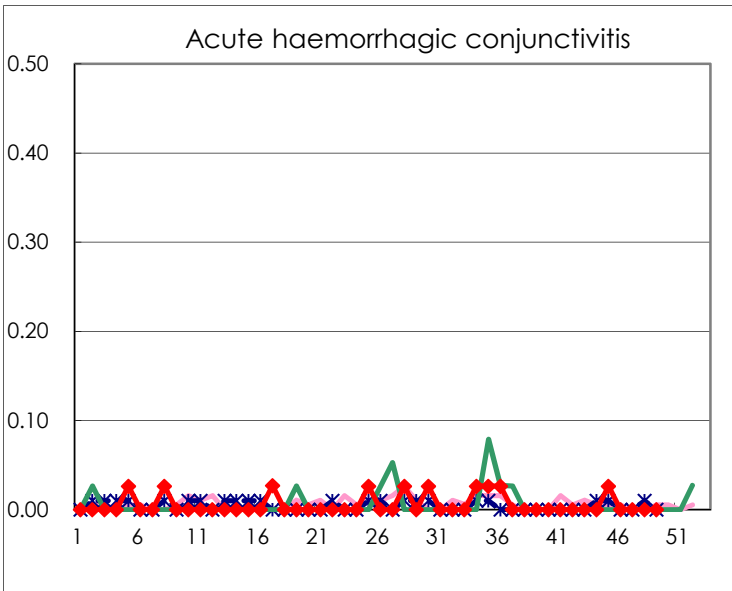
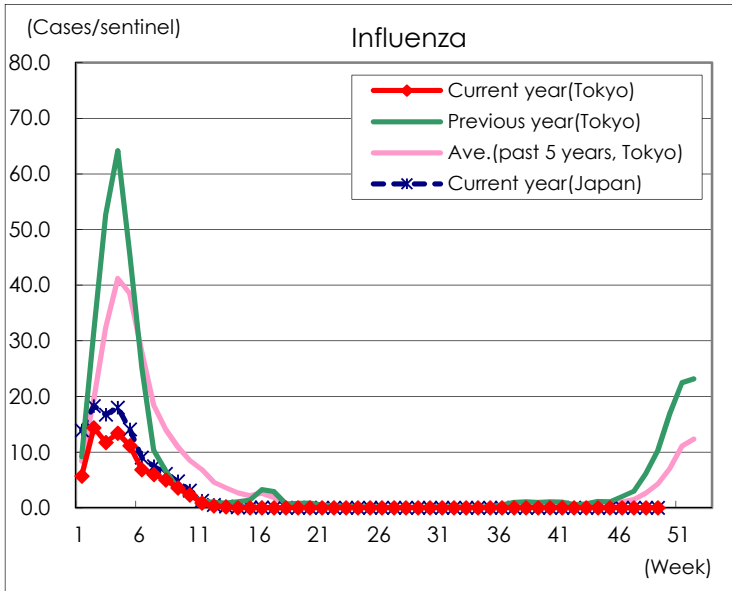
Diseases	Tokyo				
	46th	47th	48th	49th	/sentinel
Respiratory syncytial virus infection	2	1	6		
Pharyngoconjunctival fever	32	43	39	42	0.16
Group A streptococcal pharyngitis	124	134	87	134	0.52
Infectious gastroenteritis	615	729	615	616	2.41
Chickenpox	49	55	58	47	0.18
Hand, foot, and mouth disease	8	11	8	8	0.03
Erythema infectiosum	7	1	2	4	0.02
Exanthem subitum	126	144	114	96	0.38
Herpangina	8	8	12	15	0.06
Mumps	21	17	10	14	0.05
Kawasaki disease				2	0.01
Cold with exanthsms	8	8	6	10	0.04
Influenza	2	5	4	3	0.01
Acute hemorrhagic conjunctivitis					
Epidemic keratoconjunctivitis	16	8	6	7	0.18
Bacterial meningitis		1	1		
Aseptic meningitis		1			
Mycoplasma pneumonia	6				
Chlamydial pneumonia (excluding psittacosis)					
Infectious gastroenteritis (only by Rotavirus)					
Influenza-Associated Hospitalizations					

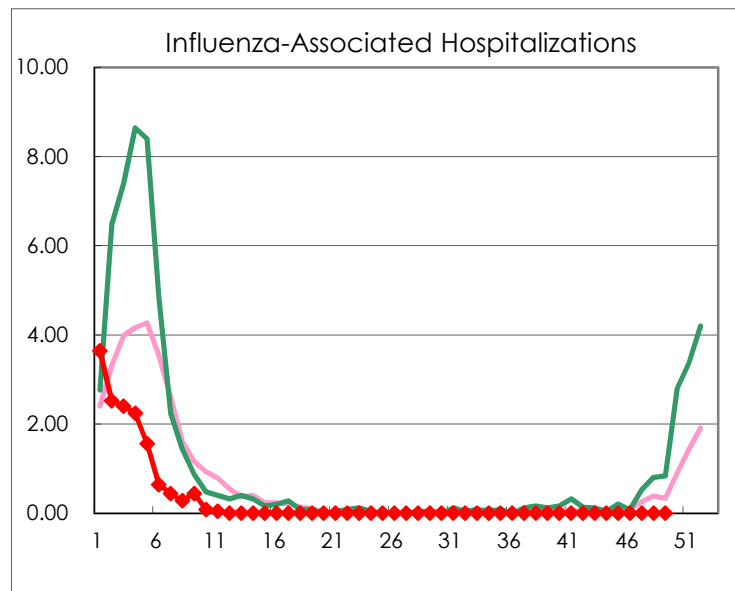
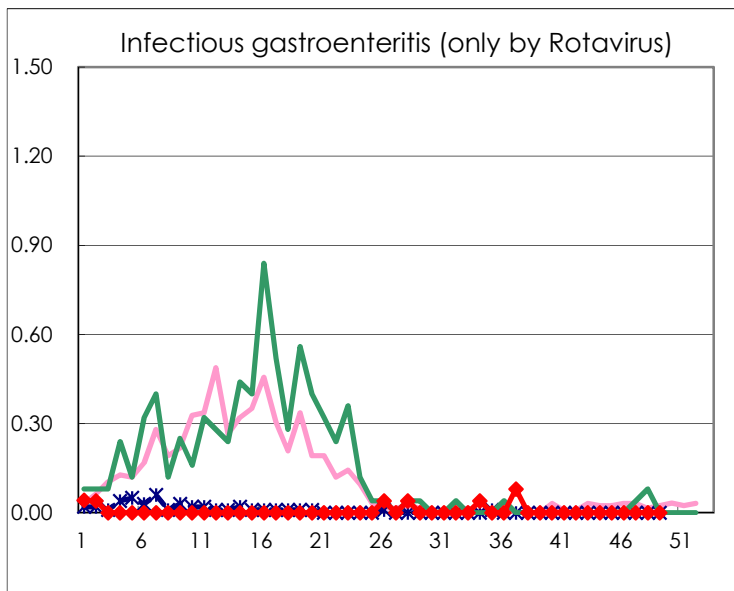
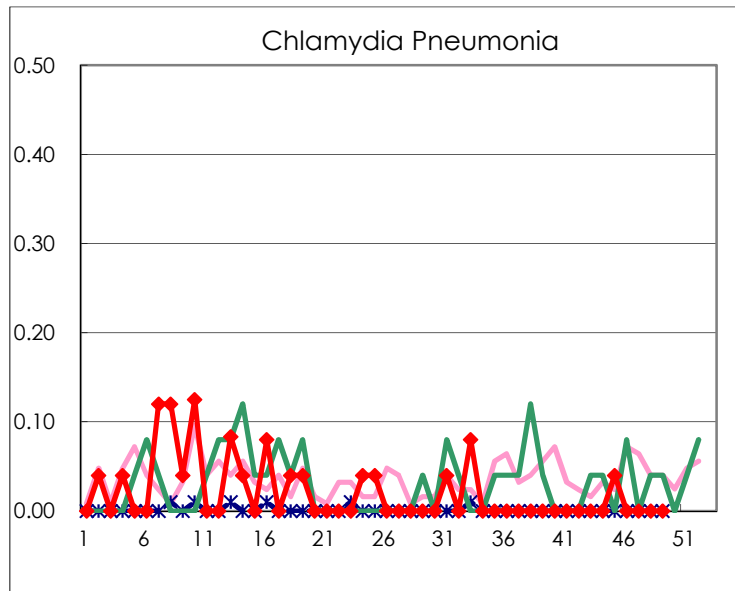
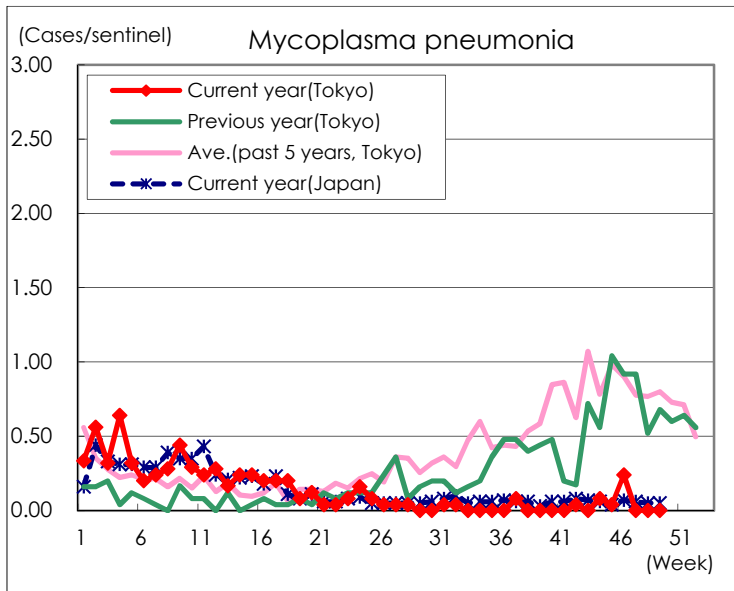
(Blank means 0.)

Disease Trend Graph (weekly reported cases per sentinel in comparison)









Number of sentinel facilities for weekly reporting		
Types of sentinels	Number of sentinels	Sentinels having reported
Pediatric	264	256
Influenza	419	407
Ophthalmic	39	38
Specially-designated	25	25