

**24 December 2020 / Number 51**

**( 12/14 ~ 12/20 )**

### Surveillance System in Tokyo, Japan

The infectious diseases which all physicians must report

All physicians must report to health centers the incidence of the diseases which are shown at page one. Health centers electronically report the individual cases to Tokyo Metropolitan Infectious Disease Surveillance Center.

The infectious diseases required to be reported by the sentinels

The numbers of patients who visit the sentinel clinics or hospitals during a week are reported to health centers in Tokyo. And they electronically report the numbers to Tokyo Metropolitan Infectious Disease Surveillance Center. We have about 500 sentinel clinics and hospitals in Tokyo.

Tokyo Metropolitan Institute of Public Health

TEL:81-3-3363-3213 FAX:81-3-5332-7365

e-mail:[www@tokyo-eiken.go.jp](mailto:www@tokyo-eiken.go.jp)

URL:[idsc.tokyo-eiken.go.jp/](http://idsc.tokyo-eiken.go.jp/)

---

Number of patients with the diseases which all physicians must report

Category	Diseases	Tokyo					Japan		
		48th	49th	50th	51st	Cum 2020	51st	Cum 2020	
I	Ebola hemorrhagic fever								
	Crimean-Congo hemorrhagic fever								
	Smallpox								
	South American hemorrhagic fever								
	Plague								
	Marburg disease								
	Lassa fever								
II	Acute poliomyelitis								
	Tuberculosis	33	48	41	38	2,374	213	16,533	
	Diphtheria								
	Severe Acute Respiratory Syndrome(SARS)								
	Middle East Respiratory Syndrome (MERS)								
	Avian influenza H5N1								
	Avian influenza H7N9								
※	Novel Coronavirus 2019 infection								
III	Cholera							1	
	Shigellosis					11		86	
	Enterohemorrhagic Escherichia coli infection	5	4	5	5	328	14	3,022	
	Typhoid fever					2		21	
	Paratyphoid fever					1		7	
IV	Hepatitis E	3	3	6		114	5	432	
	West Nile fever								
	Hepatitis A					23		117	
	Echinococcosis							22	
	Yellow fever								
	Psittacosis						1	6	
	Omsk hemorrhagic fever								
	Relapsing fever							15	
	Kyasanur forest disease								
	Q fever								
	Rabies							1	
	Coccidioidomycosis	2				3		6	
	Monkeypox								
	Zika virus infection							1	
	Severe Fever with Thrombocytopenia Syndrome							1	78
	Hemorrhagic fever with renal syndrome								
	Western equine encephalitis								
	Tick-borne encephalitis								
	Anthrax								
	Chikungunya fever								3
	Scrub typhus(Tsutsugamushi disease)	2	1	5	2	19	49	439	
	Dengue fever					13	1	45	
	Eastern equine encephalitis								
	Avian influenza (excluding H5N1 and H7N9)								
	Nipah virus infection								
	Japanese spotted fever							1	420
	Japanese encephalitis								5
	Hantavirus pulmonary syndrome								
	Herpes B virus infection								
	Glanders								
	Brucellosis								2
	Venezuelan equine encephalitis								
	Hendra virus infection								
Epidemic typhus									
Botulism						1		4	
Malaria						6		20	
Tularemia									
Lyme disease						1		26	
Lyssavirus infection(excluding rabies)									
Rift valley fever									
Melioidosis						1		1	
Legionellosis	1	2	3	4	143	18	1,992		
Leptospirosis					2		16		
Rocky mountain spotted fever									

Category	Diseases	Tokyo				Japan		
		48th	49th	50th	51st	Cum 2020	51st	Cum 2020
V	Amebiasis	4		3	2	112	5	594
	Viral hepatitis(excluding hepatitis A and E)	1				59	2	235
	CRE infection	5	5	4	5	167	34	1,851
	Acute Flaccid Paralysis (excluding Acute poliomyelitis)	1	1			4	1	32
	Acute encephalitis(excluding JE and WNE)					31	3	471
	Cryptosporidiosis							6
	Creutzfeldt-Jakob disease	1		1		17	1	143
	Severe invasive streptococcal infections(TSLS)	1		6	2	100	9	731
	Acquired immunodeficiency syndrome (AIDS)	3	11	5	5	374	11	1,052
	Giardiasis					8	1	25
	Invasive <i>Haemophilus influenzae</i> disease					23	4	246
	Invasive meningococcal disease					2		14
	Invasive pneumococcal disease	2	2	3	4	157	12	1,585
	Varicella (limited to hospitalized case)	1	1	1	1	50	6	354
	Congenital rubella syndrome							1
	Syphilis	29	35	29	22	1,487	49	5,601
	Disseminated cryptococcosis					17		145
	Tetanus					8		104
	Vancomycin-resistant <i>S. aureus</i> infection							
	Vancomycin-resistant Enterococcus infection		1	1		8	1	132
Pertussis			1	2	261	12	2,908	
Rubella					28	1	100	
Measles					3		13	
MDRA infection							10	

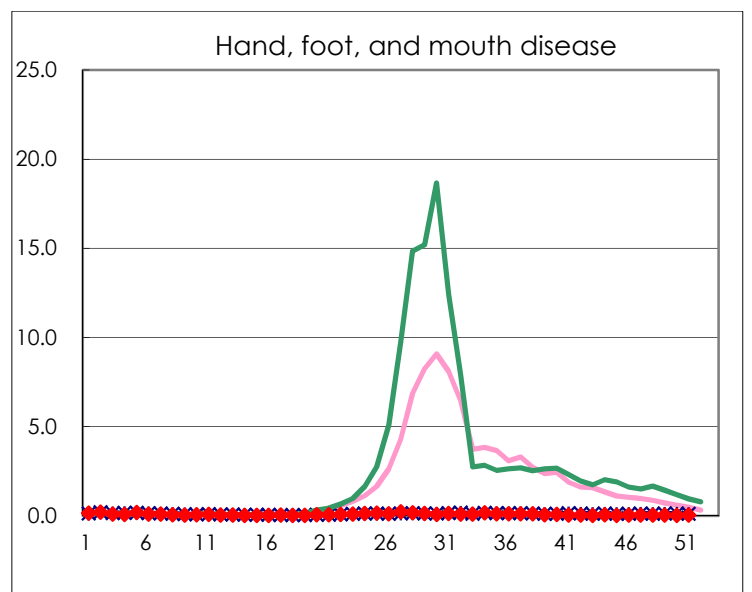
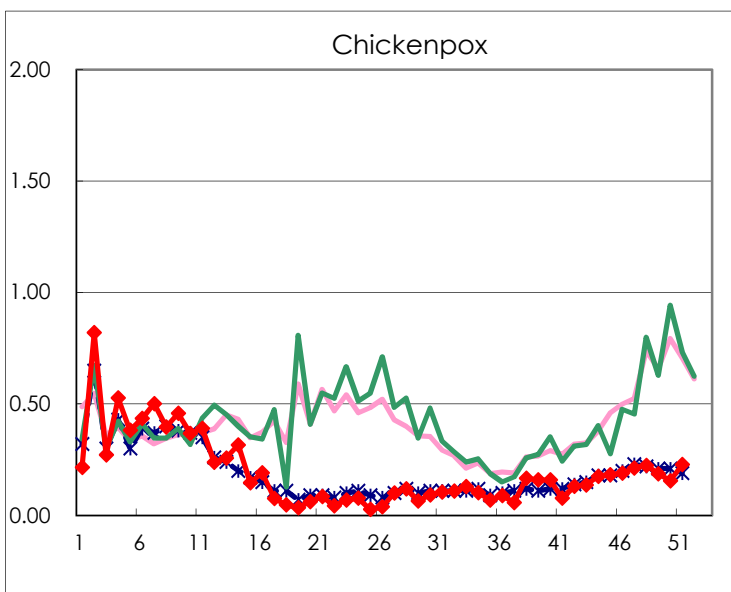
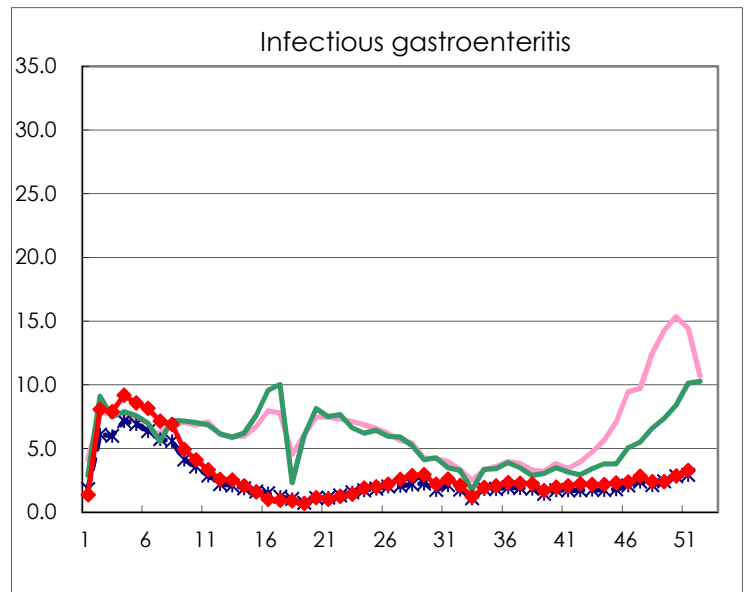
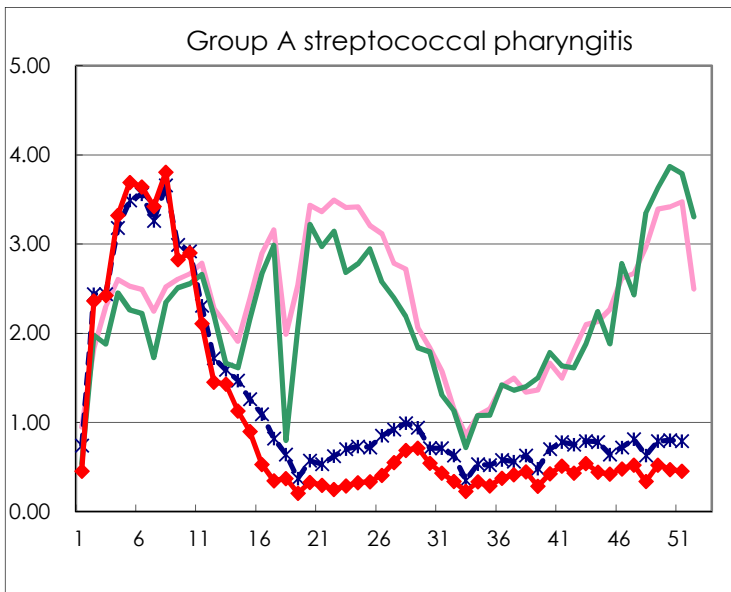
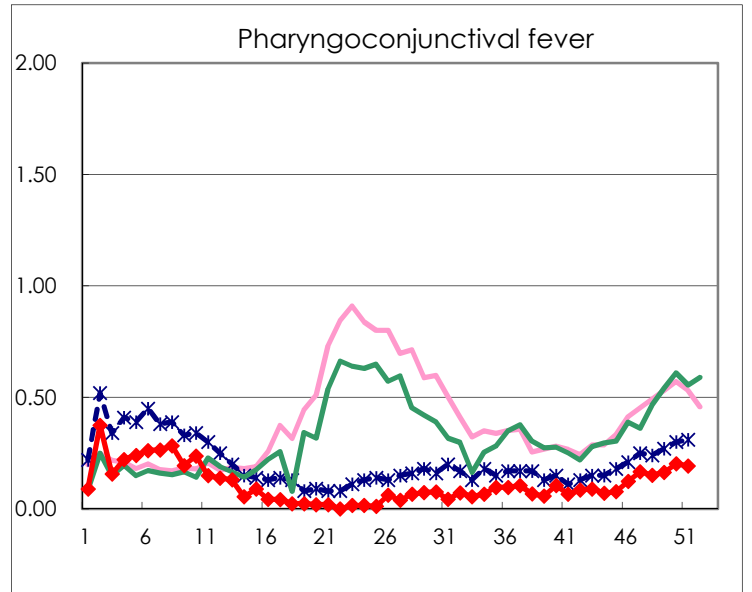
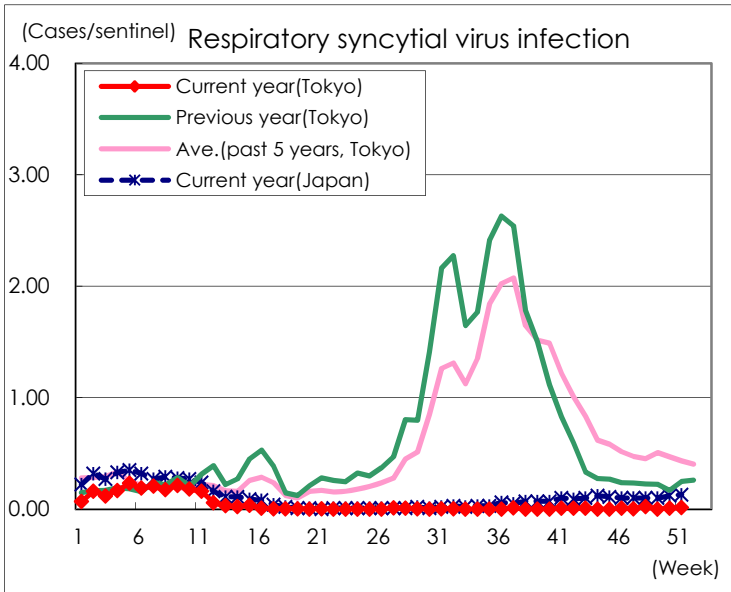
※ Designated infectious disease

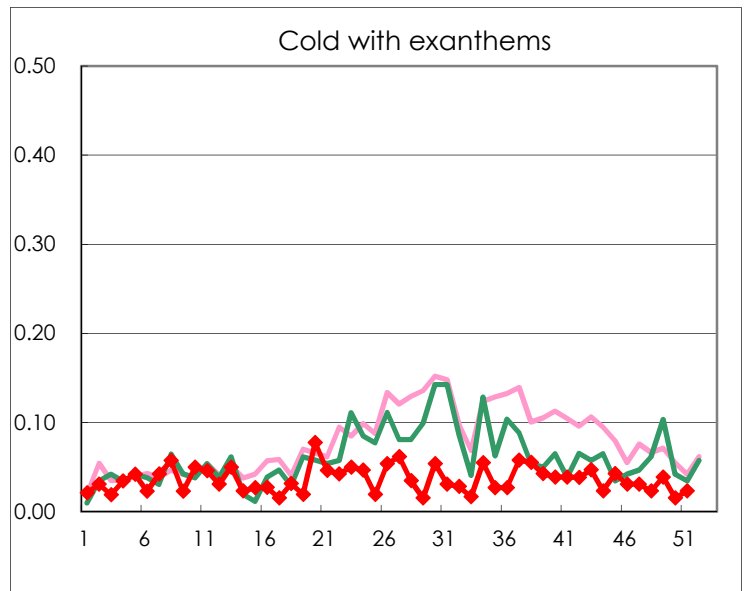
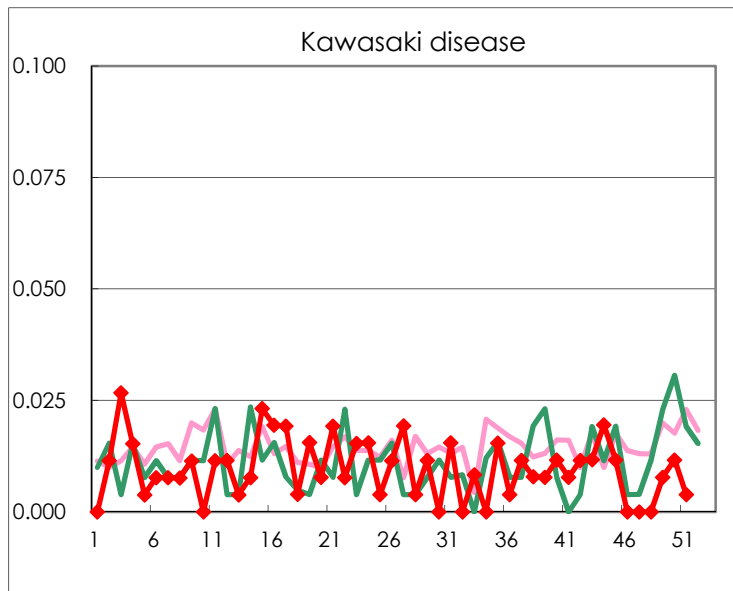
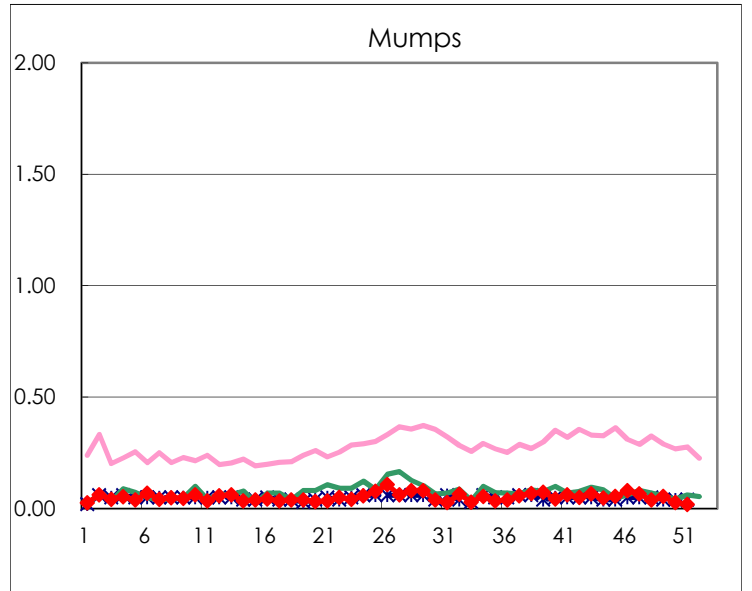
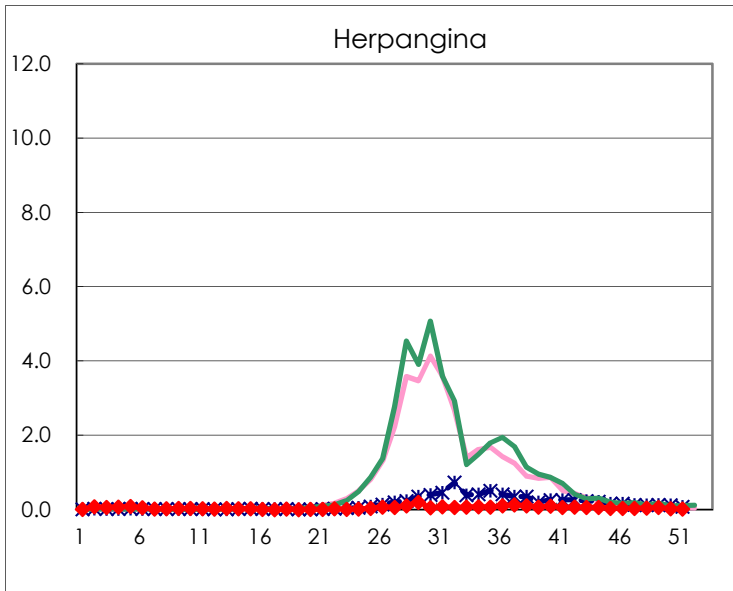
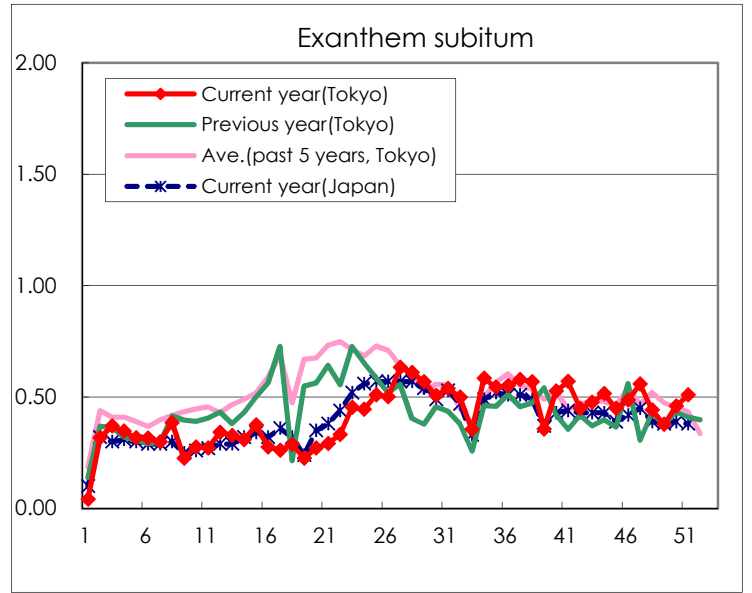
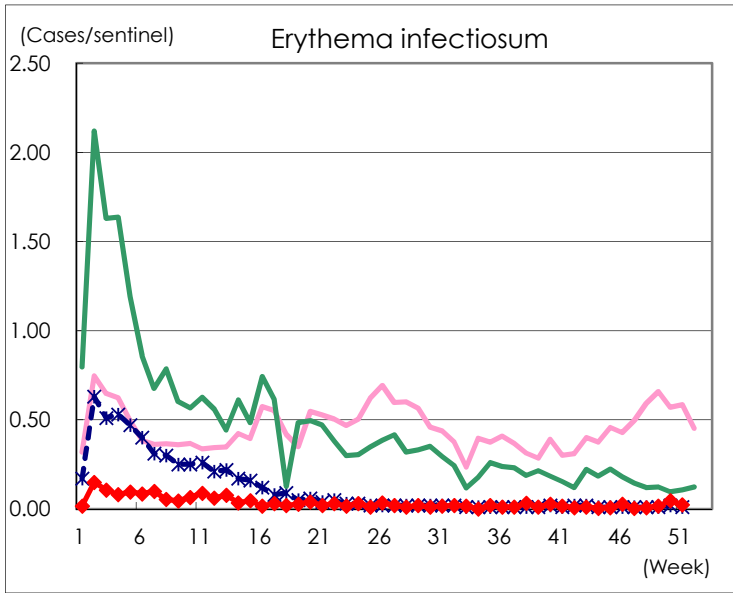
Number of patients with the diseases to be reported  
by the designated clinics and hospitals

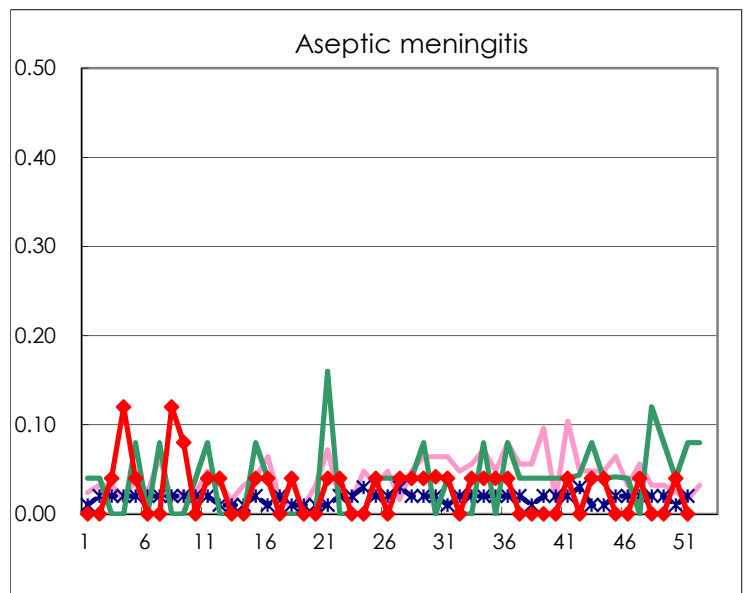
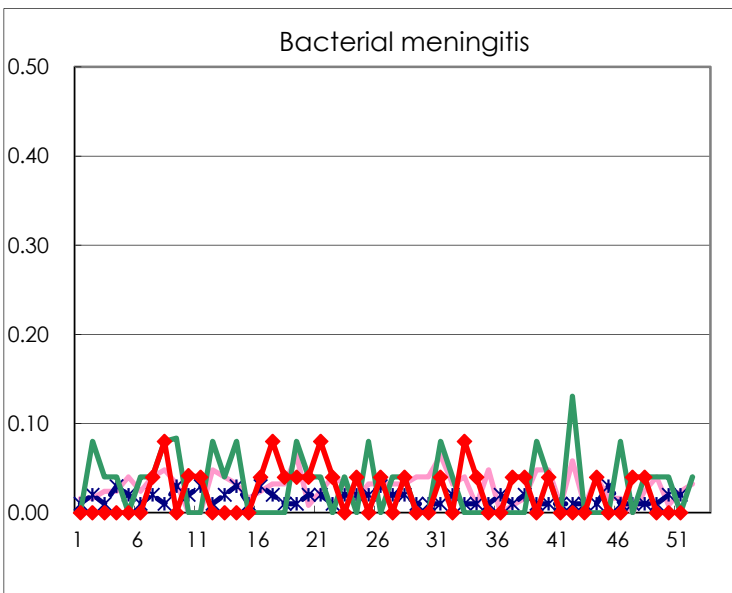
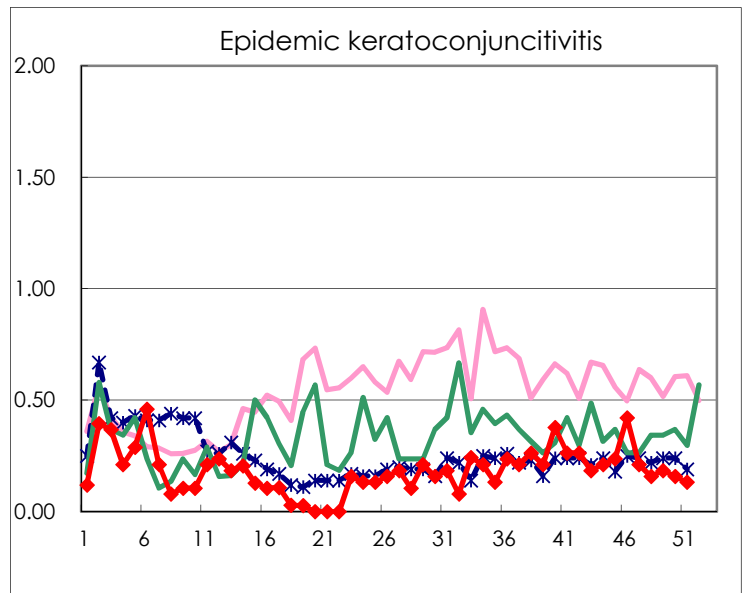
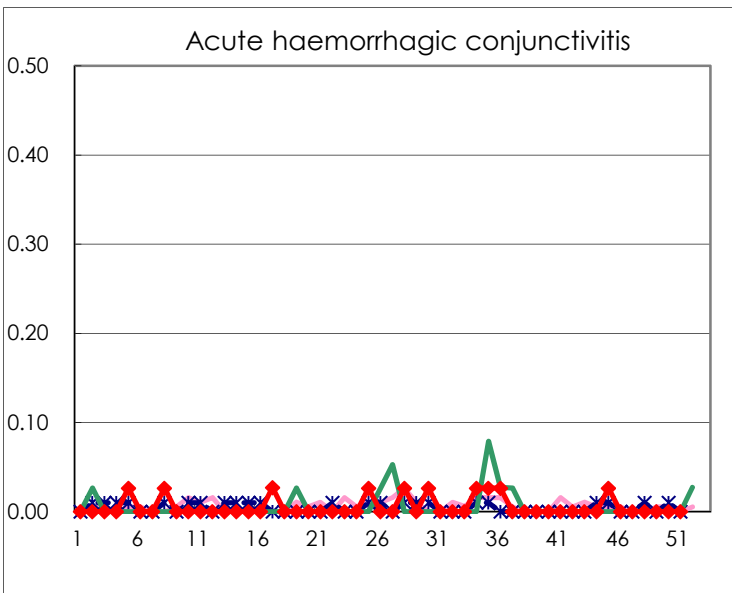
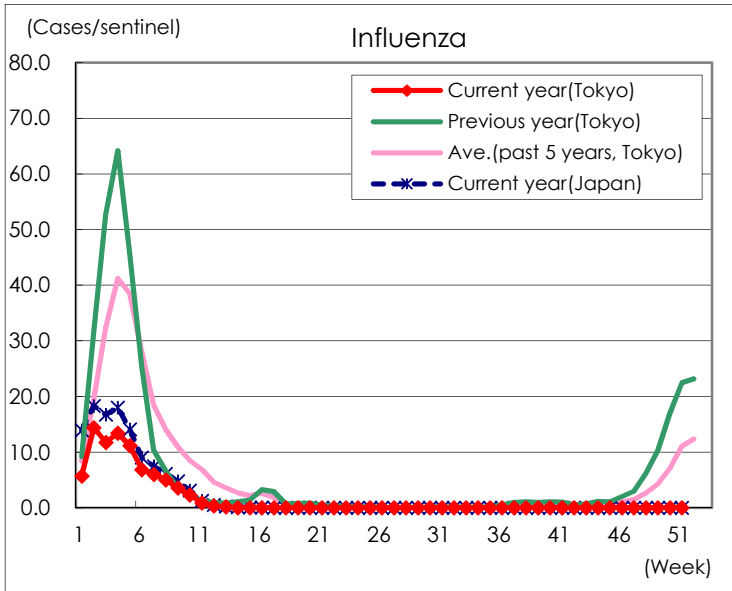
Diseases	Tokyo				
	48th	49th	50th	51st	/sentinel
Respiratory syncytial virus infection	6		2	4	0.02
Pharyngoconjunctival fever	39	42	52	50	0.19
Group A streptococcal pharyngitis	87	134	121	117	0.45
Infectious gastroenteritis	615	617	729	848	3.27
Chickenpox	58	48	40	59	0.23
Hand, foot, and mouth disease	8	8	6	8	0.03
Erythema infectiosum	2	4	12	6	0.02
Exanthem subitum	114	97	118	132	0.51
Herpangina	12	15	6	4	0.02
Mumps	10	14	7	5	0.02
Kawasaki disease		2	3	1	0.00
Cold with exanthsms	6	10	4	6	0.02
Influenza	4	3	4	3	0.01
Acute hemorrhagic conjunctivitis					
Epidemic keratoconjunctivitis	6	7	6	5	0.13
Bacterial meningitis	1				
Aseptic meningitis			1		
Mycoplasma pneumonia					
Chlamydial pneumonia (excluding psittacosis)					
Infectious gastroenteritis (only by Rotavirus)					
Influenza-Associated Hospitalizations					

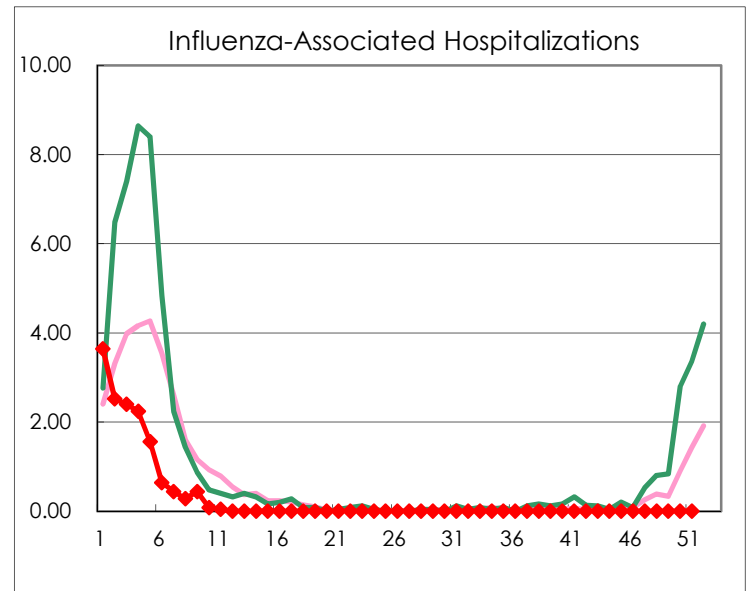
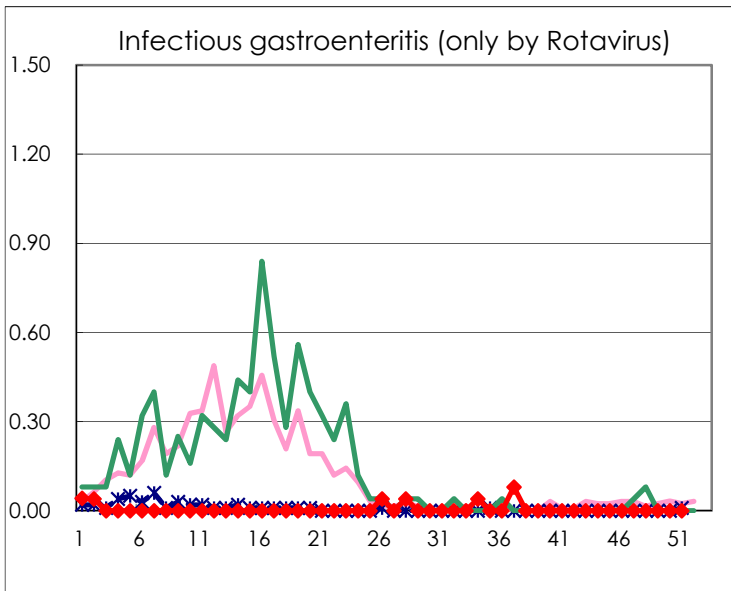
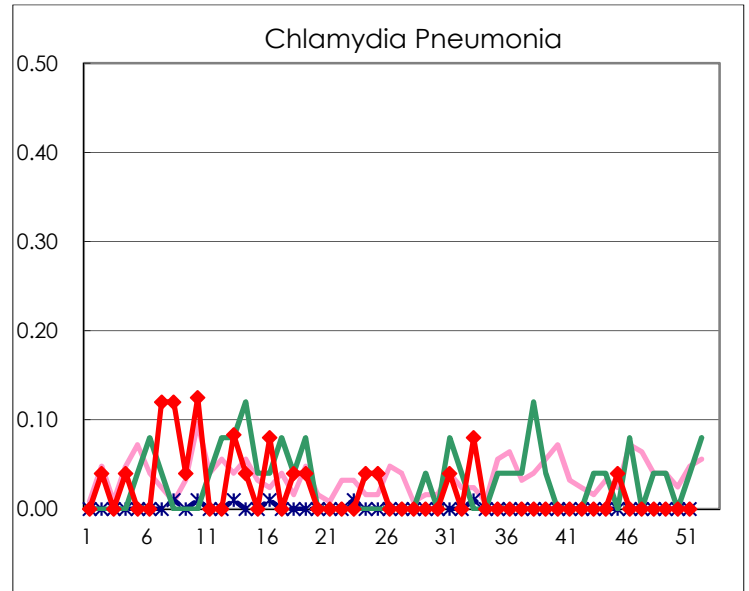
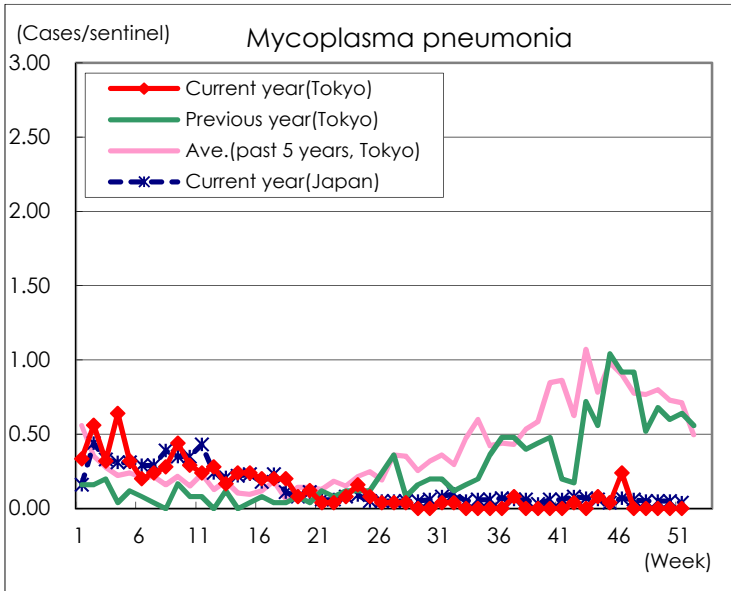
( Blank means 0. )

# Disease Trend Graph (weekly reported cases per sentinel in comparison)









Number of sentinel facilities for weekly reporting		
Types of sentinels	Number of sentinels	Sentinels having reported
Pediatric	264	259
Influenza	419	411
Ophthalmic	39	38
Specially-designated	25	25