

## 6 January 2021 / Number 52 ( 12/21 ~ 12/27 )

### Surveillance System in Tokyo, Japan

The infectious diseases which all physicians must report

All physicians must report to health centers the incidence of the diseases which are shown at page one. Health centers electronically report the individual cases to Tokyo Metropolitan Infectious Disease Surveillance Center.

The infectious diseases required to be reported by the sentinels

The numbers of patients who visit the sentinel clinics or hospitals during a week are reported to health centers in Tokyo. And they electronically report the numbers to Tokyo Metropolitan Infectious Disease Surveillance Center. We have about 500 sentinel clinics and hospitals in Tokyo.

Tokyo Metropolitan Institute of Public Health

TEL:81-3-3363-3213 FAX:81-3-5332-7365

e-mail:[www@tokyo-eiken.go.jp](mailto:www@tokyo-eiken.go.jp)

URL:[idsc.tokyo-eiken.go.jp/](http://idsc.tokyo-eiken.go.jp/)

---

Number of patients with the diseases which all physicians must report

Category	Diseases	Tokyo					Japan	
		49th	50th	51st	52nd	Cum 2020	52nd	Cum 2020
I	Ebola hemorrhagic fever							
	Crimean-Congo hemorrhagic fever							
	Smallpox							
	South American hemorrhagic fever							
	Plague							
	Marburg disease							
	Lassa fever							
II	Acute poliomyelitis							
	Tuberculosis	48	47	46	39	2,427	282	16,964
	Diphtheria							
	Severe Acute Respiratory Syndrome(SARS)							
	Middle East Respiratory Syndrome (MERS)							
	Avian influenza H5N1							
	Avian influenza H7N9							
※	Novel Coronavirus 2019 infection							
III	Cholera							1
	Shigellosis					11		86
	Enterohemorrhagic Escherichia coli infection	4	5	5	2	330	17	3,044
	Typhoid fever					2		21
	Paratyphoid fever					1		7
IV	Hepatitis E	3	6			114	7	441
	West Nile fever							
	Hepatitis A					23	1	118
	Echinococcosis							22
	Yellow fever							
	Psittacosis							6
	Omsk hemorrhagic fever							
	Relapsing fever							15
	Kyasanur forest disease							
	Q fever							
	Rabies							1
	Coccidioidomycosis					3		6
	Monkeypox							
	Zika virus infection							1
	Severe Fever with Thrombocytopenia Syndrome							78
	Hemorrhagic fever with renal syndrome							
	Western equine encephalitis							
	Tick-borne encephalitis							
	Anthrax							
	Chikungunya fever							3
	Scrub typhus(Tsutsugamushi disease)	1	5	2		19	40	491
	Dengue fever					13		45
	Eastern equine encephalitis							
	Avian influenza (excluding H5N1 and H7N9)							
	Nipah virus infection							
	Japanese spotted fever							420
	Japanese encephalitis							5
	Hantavirus pulmonary syndrome							
	Herpes B virus infection							
	Glanders							
	Brucellosis							2
	Venezuelan equine encephalitis							
	Hendra virus infection							
Epidemic typhus								
Botulism					1		4	
Malaria					6		20	
Tularemia								
Lyme disease					1		26	
Lyssavirus infection(excluding rabies)								
Rift valley fever								
Melioidosis					1		1	
Legionellosis	2	3	4	1	144	14	2,013	
Leptospirosis					2		16	
	Rocky mountain spotted fever							

Category	Diseases	Tokyo					Japan	
		49th	50th	51st	52nd	Cum 2020	52nd	Cum 2020
V	Amebiasis		3	2		112	10	606
	Viral hepatitis(excluding hepatitis A and E)					59	4	242
	CRE infection	6	4	6	1	170	20	1,890
	Acute Flaccid Paralysis (excluding Acute poliomyelitis)	1				4		32
	Acute encephalitis(excluding JE and WNE)					31	3	477
	Cryptosporidiosis							6
	Creutzfeldt-Jakob disease		1			17	3	148
	Severe invasive streptococcal infections(TSLS)		6	2	1	101	13	744
	Acquired immunodeficiency syndrome (AIDS)	11	5	5	3	377	11	1,072
	Giardiasis					8	1	26
	Invasive <i>Haemophilus influenzae</i> disease					23	2	248
	Invasive meningococcal disease					2		14
	Invasive pneumococcal disease	2	3	4	2	159	16	1,606
	Varicella (limited to hospitalized case)	1	1	1		50	1	356
	Congenital rubella syndrome							1
	Syphilis	35	29	38	28	1,531	65	5,729
	Disseminated cryptococcosis				1	18	1	147
	Tetanus					8		104
	Vancomycin-resistant <i>S. aureus</i> infection							
	Vancomycin-resistant Enterococcus infection	1	1			8	1	133
Pertussis		1	2	1	262	14	2,928	
Rubella					28		100	
Measles					3		13	
MDRA infection							10	

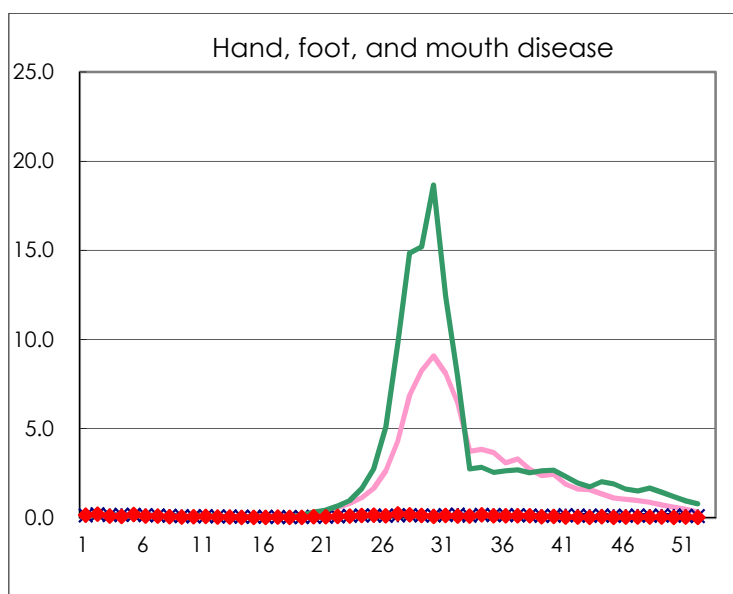
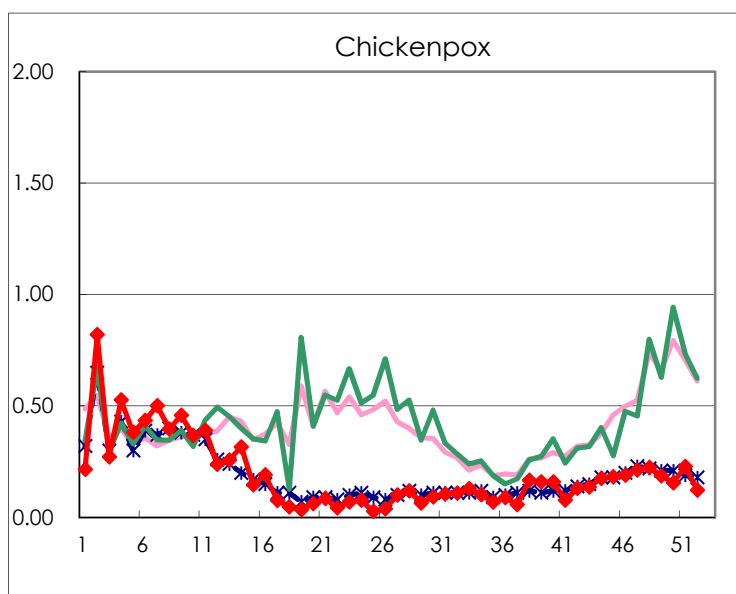
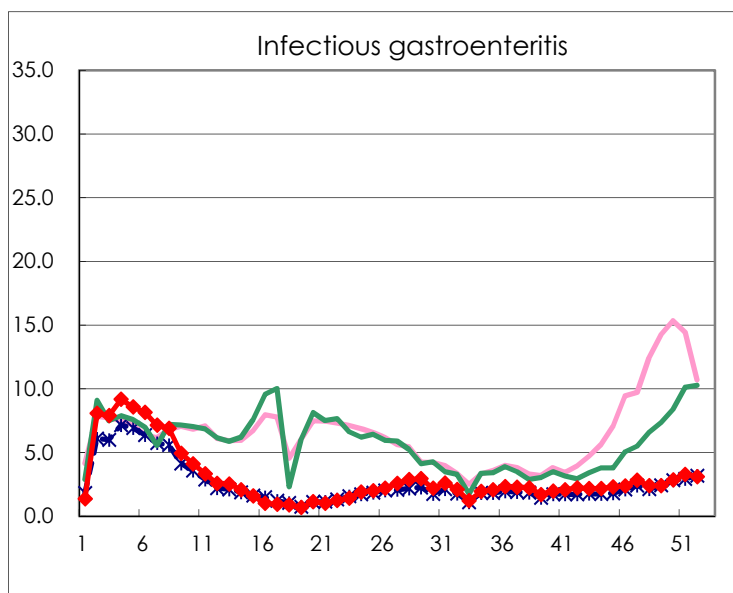
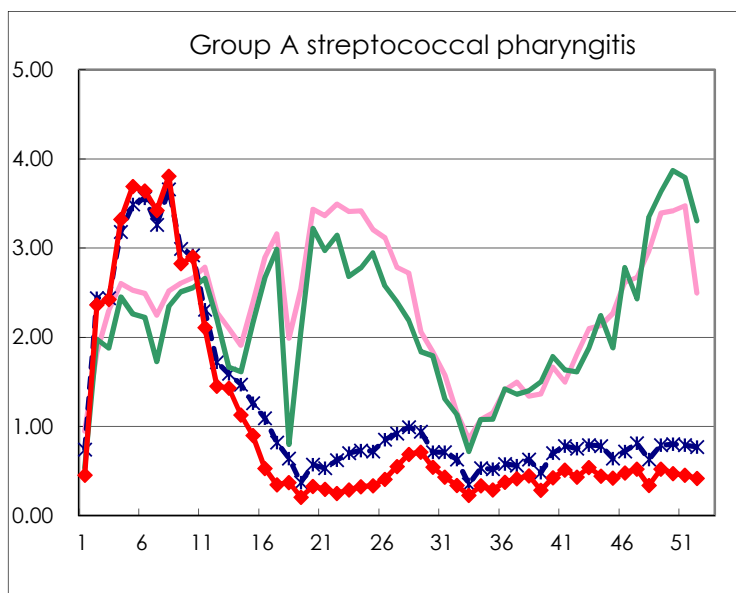
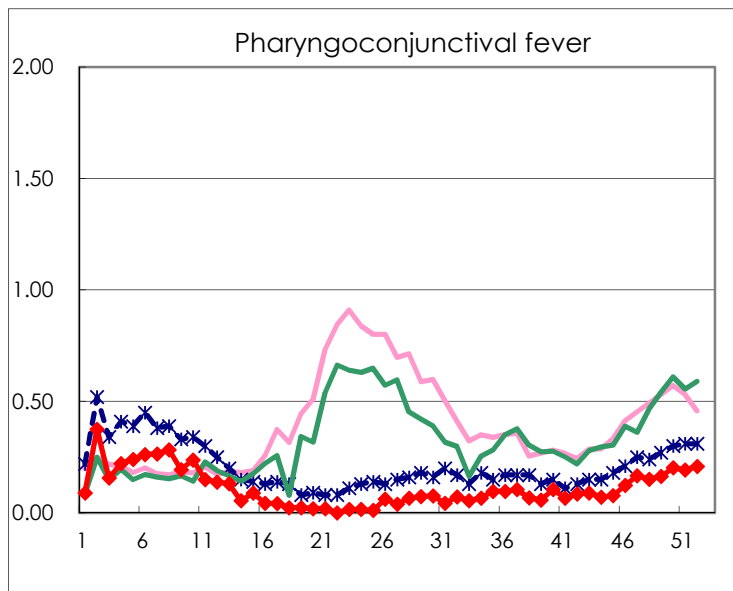
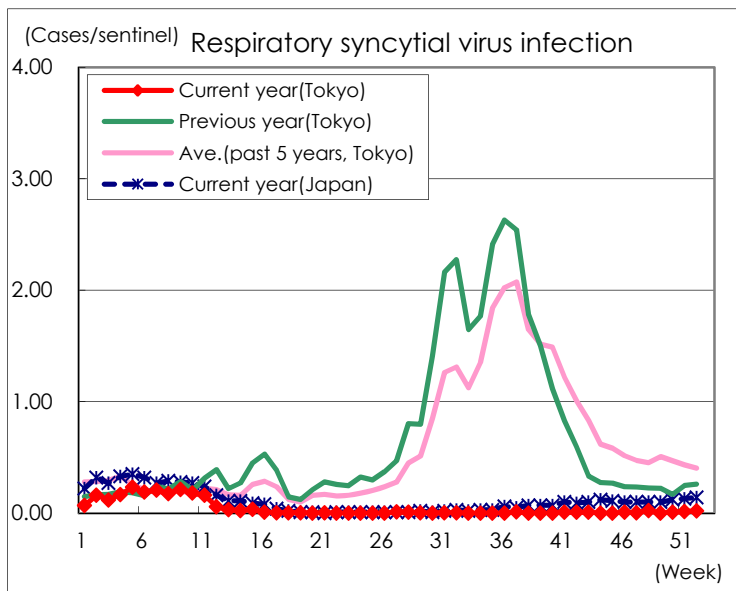
※ Designated infectious disease

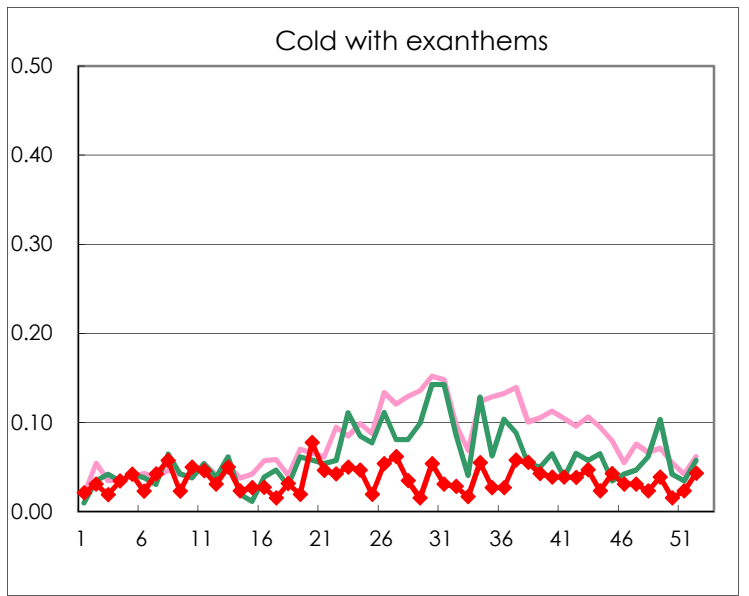
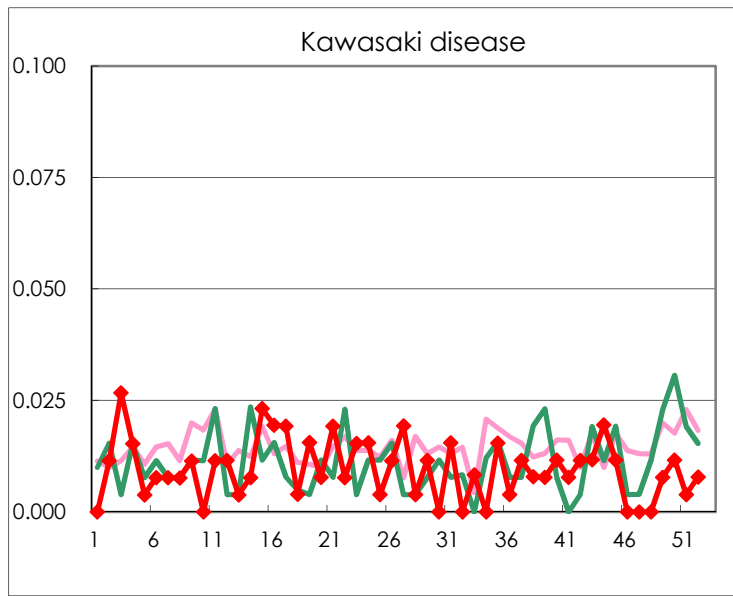
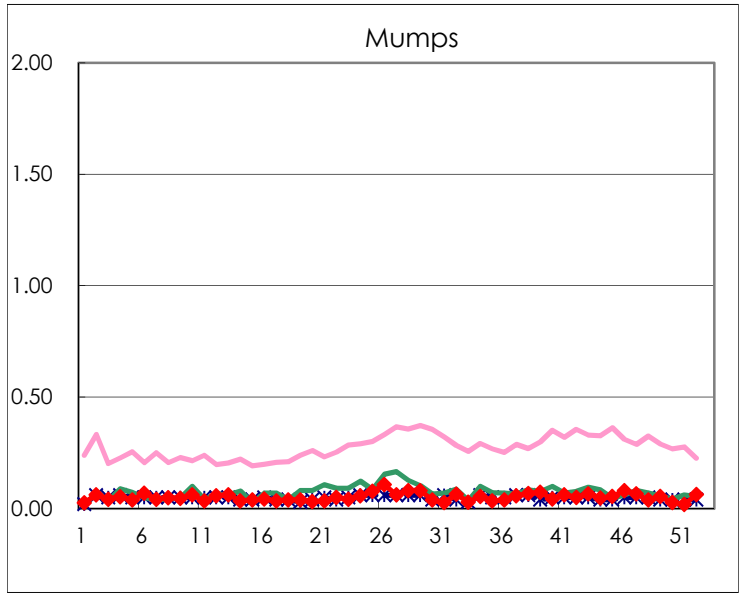
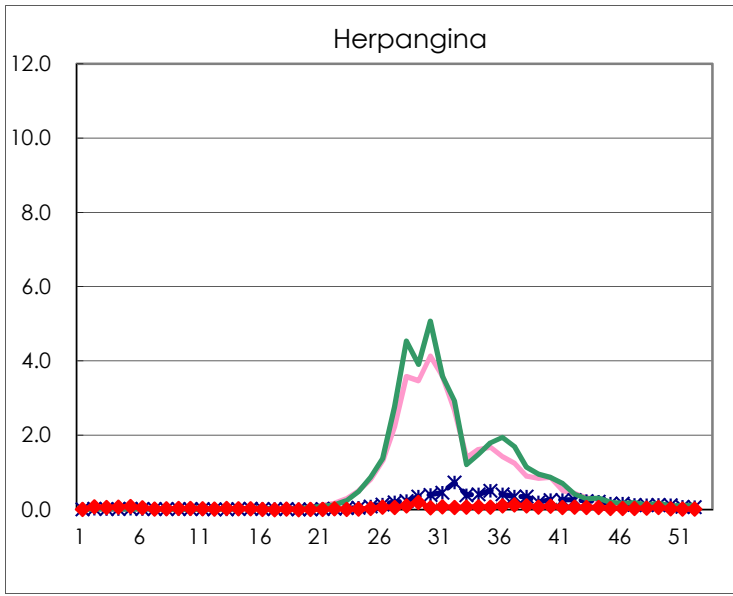
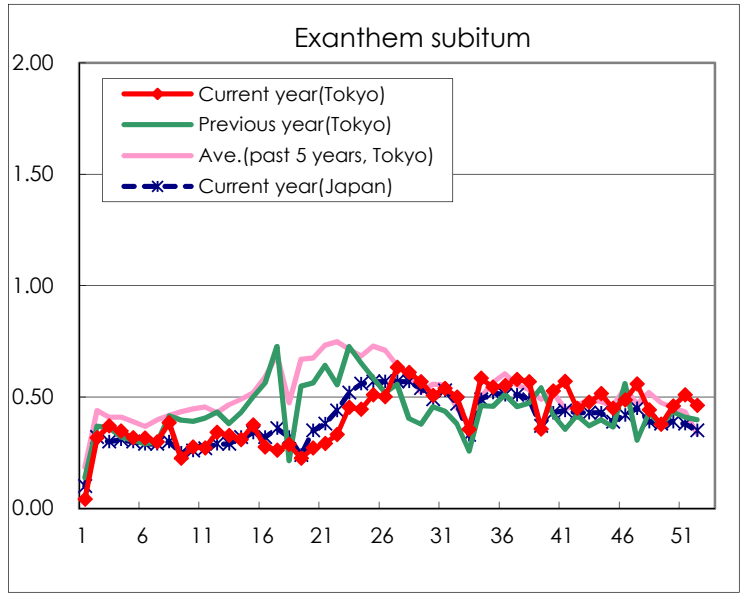
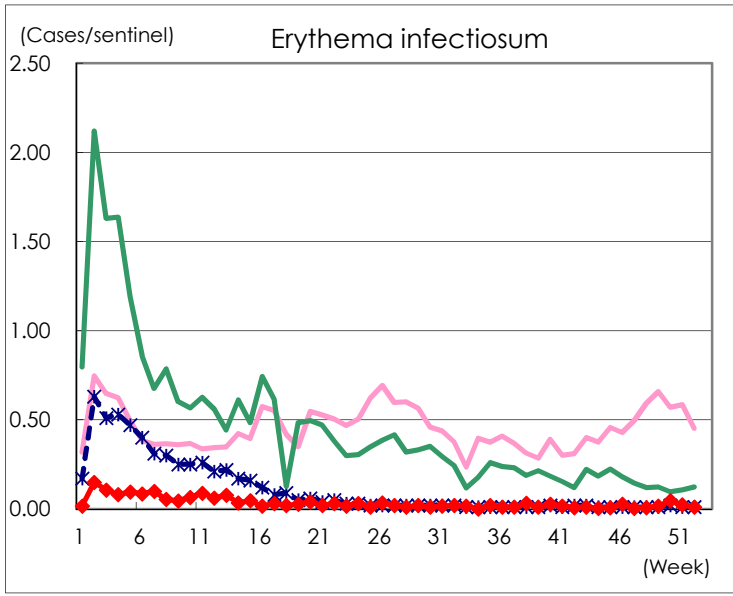
Number of patients with the diseases to be reported  
by the designated clinics and hospitals

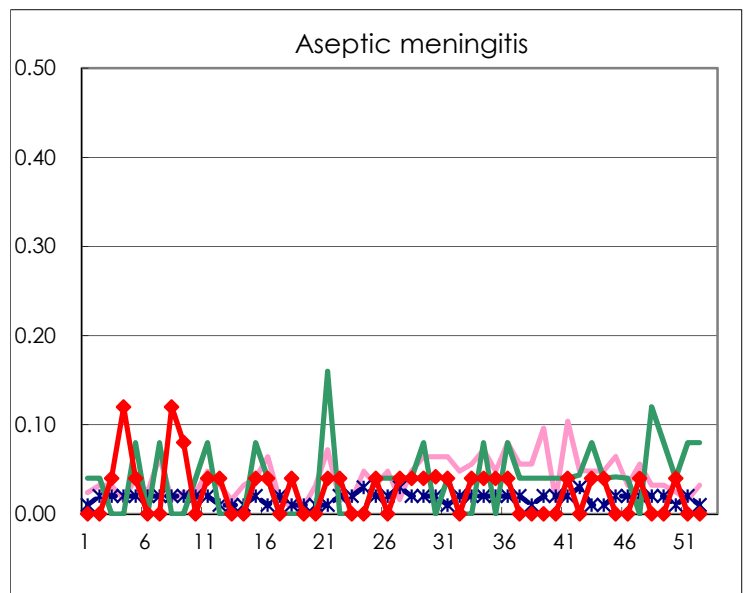
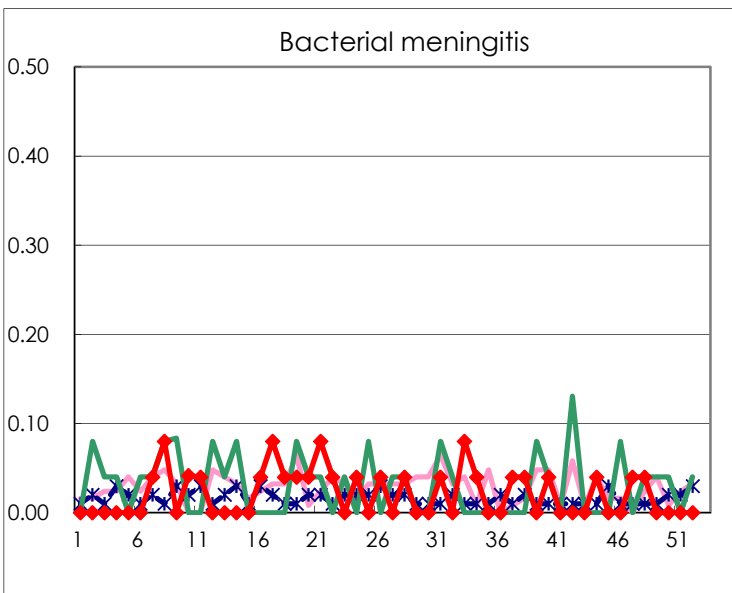
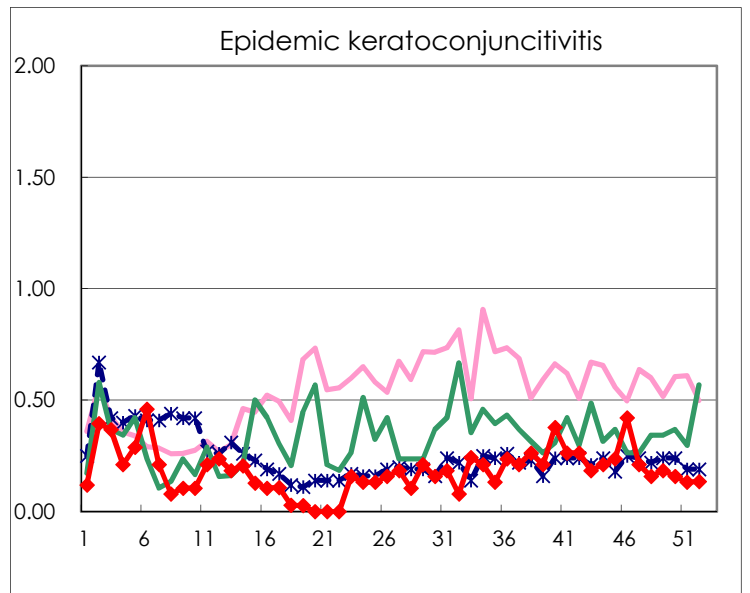
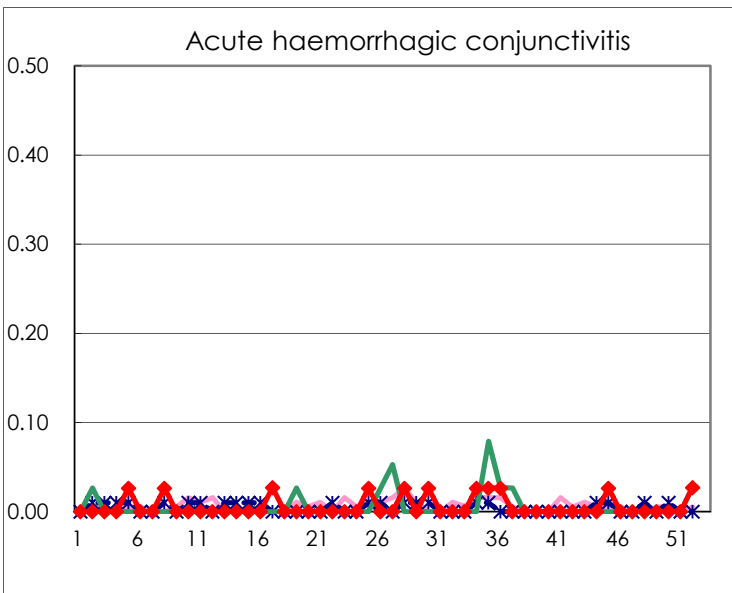
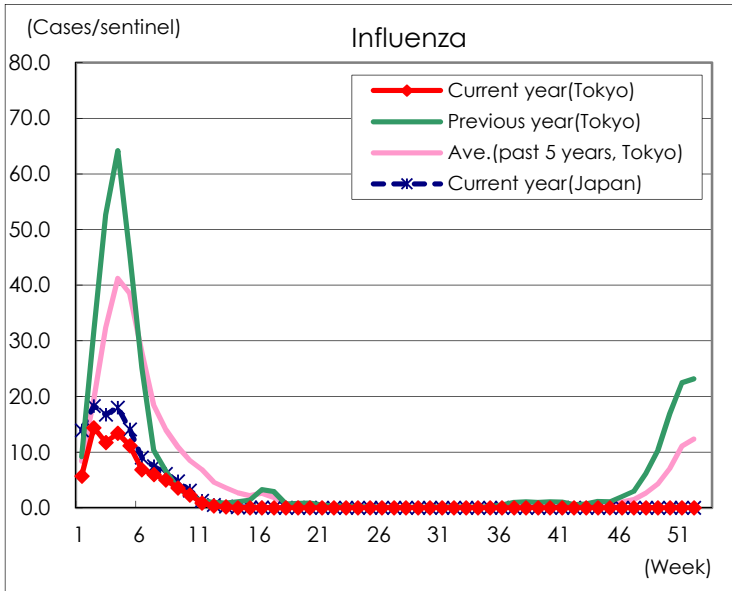
Diseases	Tokyo				
	49th	50th	51st	52nd	/sentinel
Respiratory syncytial virus infection		2	4	5	0.02
Pharyngoconjunctival fever	42	52	50	53	0.21
Group A streptococcal pharyngitis	134	121	117	106	0.42
Infectious gastroenteritis	617	729	848	789	3.09
Chickenpox	48	40	59	31	0.12
Hand, foot, and mouth disease	8	6	8	3	0.01
Erythema infectiosum	4	12	6	3	0.01
Exanthem subitum	97	118	132	118	0.46
Herpangina	15	6	4	5	0.02
Mumps	14	7	5	16	0.06
Kawasaki disease	2	3	1	2	0.01
Cold with exanths	10	4	6	11	0.04
Influenza	3	4	3	2	0.00
Acute hemorrhagic conjunctivitis				1	0.03
Epidemic keratoconjunctivitis	7	6	5	5	0.14
Bacterial meningitis					
Aseptic meningitis		1			
Mycoplasma pneumonia				1	0.04
Chlamydial pneumonia (excluding psittacosis)					
Infectious gastroenteritis (only by Rotavirus)					
Influenza-Associated Hospitalizations					

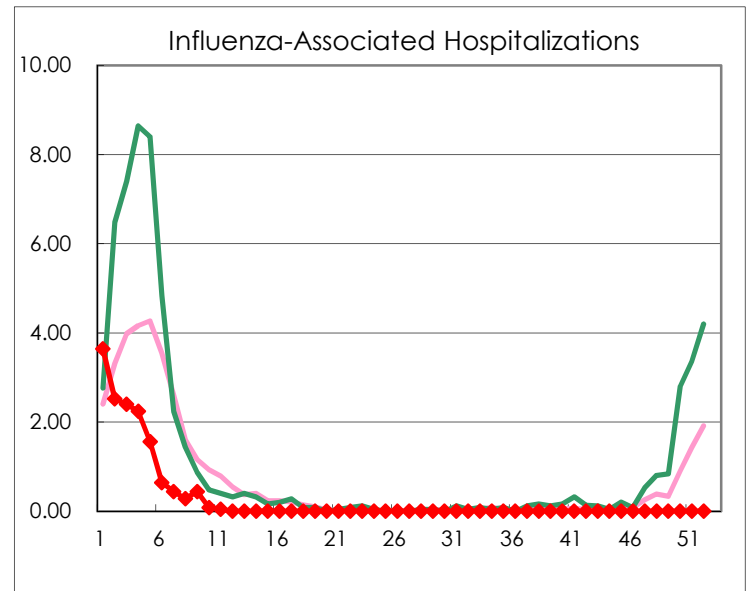
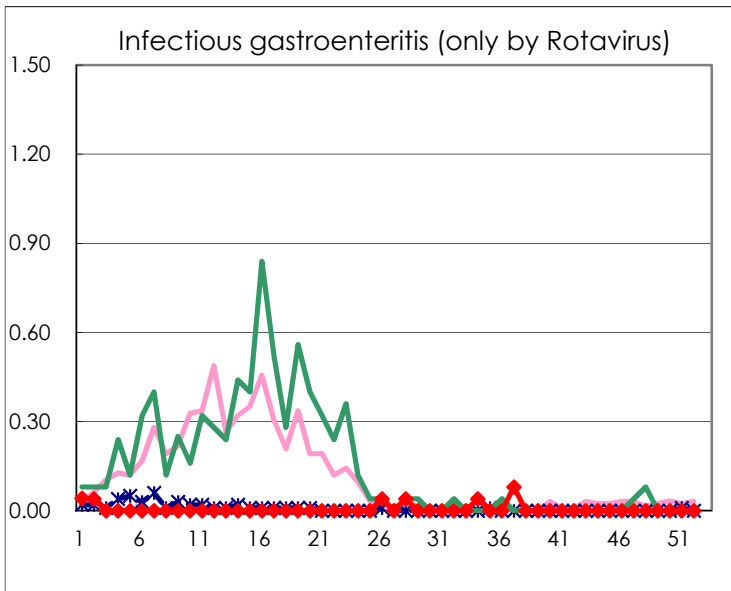
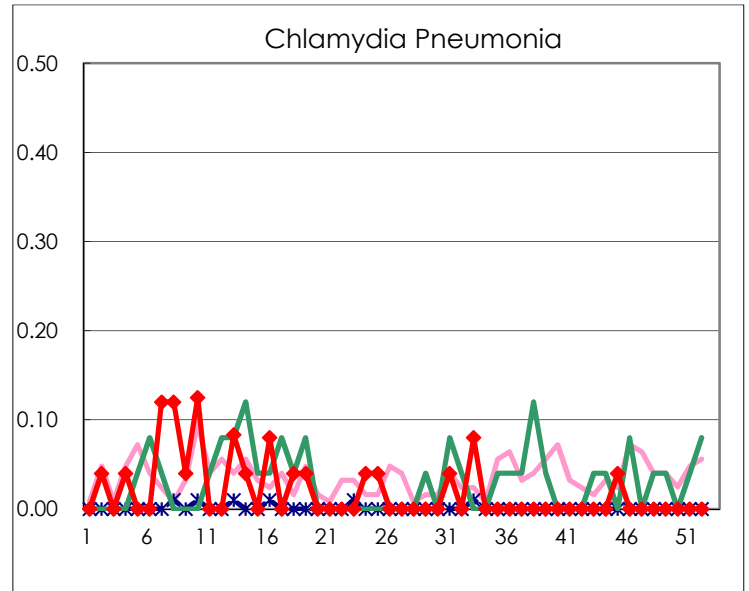
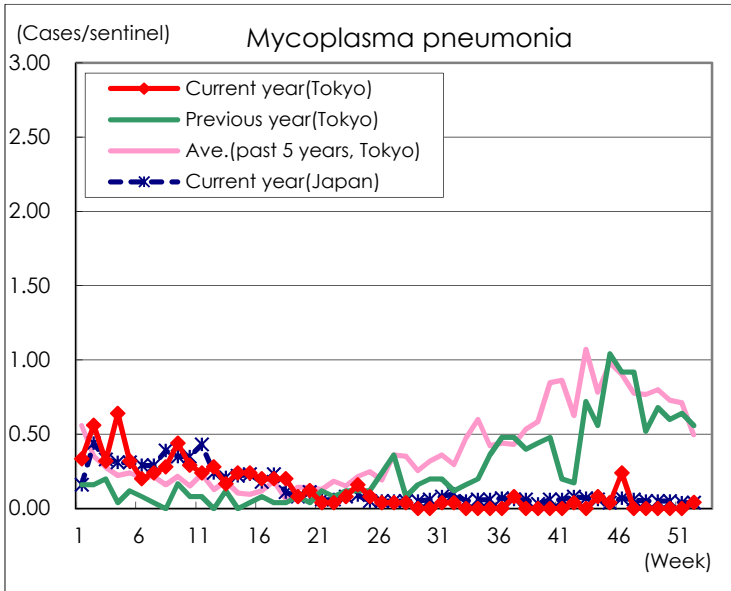
( Blank means 0. )

# Disease Trend Graph (weekly reported cases per sentinel in comparison)









Number of sentinel facilities for weekly reporting		
Types of sentinels	Number of sentinels	Sentinels having reported
Pediatric	264	255
Influenza	419	405
Ophthalmic	39	37
Specially-designated	25	24