

8 January 2021 / Number 53

(12/28 ~ 1/3)

Surveillance System in Tokyo, Japan

The infectious diseases which all physicians must report

All physicians must report to health centers the incidence of the diseases which are shown at page one. Health centers electronically report the individual cases to Tokyo Metropolitan Infectious Disease Surveillance Center.

The infectious diseases required to be reported by the sentinels

The numbers of patients who visit the sentinel clinics or hospitals during a week are reported to health centers in Tokyo. And they electronically report the numbers to Tokyo Metropolitan Infectious Disease Surveillance Center. We have about 500 sentinel clinics and hospitals in Tokyo.

Tokyo Metropolitan Institute of Public Health

TEL:81-3-3363-3213 FAX:81-3-5332-7365

e-mail:www@tokyo-eiken.go.jp

URL:idsc.tokyo-eiken.go.jp/

Number of patients with the diseases which all physicians must report

Category	Diseases	Tokyo					Japan	
		50th	51st	52nd	53rd	Cum 2020	53rd	Cum 2020
I	Ebola hemorrhagic fever							
	Crimean-Congo hemorrhagic fever							
	Smallpox							
	South American hemorrhagic fever							
	Plague							
	Marburg disease							
	Lassa fever							
II	Acute poliomyelitis							
	Tuberculosis	47	46	39	25	2,452	106	17,108
	Diphtheria							
	Severe Acute Respiratory Syndrome(SARS)							
	Middle East Respiratory Syndrome (MERS)							
	Avian influenza H5N1							
	Avian influenza H7N9							
※	Novel Coronavirus 2019 infection							
III	Cholera							1
	Shigellosis					11	1	87
	Enterohemorrhagic Escherichia coli infection	5	6	3		332	11	3,064
	Typhoid fever					2		21
	Paratyphoid fever					1		7
IV	Hepatitis E	6			3	117	7	450
	West Nile fever							
	Hepatitis A					23	1	119
	Echinococcosis							23
	Yellow fever							
	Psittacosis							6
	Omsk hemorrhagic fever							
	Relapsing fever							15
	Kyasanur forest disease							
	Q fever							
	Rabies							1
	Coccidioidomycosis					3		6
	Monkeypox							
	Zika virus infection							1
	Severe Fever with Thrombocytopenia Syndrome							78
	Hemorrhagic fever with renal syndrome							
	Western equine encephalitis							
	Tick-borne encephalitis							
	Anthrax							
	Chikungunya fever							3
	Scrub typhus(Tsutsugamushi disease)	5	2		1	20	17	511
	Dengue fever					13		45
	Eastern equine encephalitis							
	Avian influenza (excluding H5N1 and H7N9)							
	Nipah virus infection							
	Japanese spotted fever							420
	Japanese encephalitis							5
	Hantavirus pulmonary syndrome							
	Herpes B virus infection							
	Glanders							
	Brucellosis							2
	Venezuelan equine encephalitis							
	Hendra virus infection							
	Epidemic typhus							
	Botulism					1		4
	Malaria					6		20
	Tularemia							
	Lyme disease					1		26
	Lyssavirus infection(excluding rabies)							
	Rift valley fever							
Melioidosis					1		1	
Legionellosis	3	4	2	3	148	17	2,031	
Leptospirosis					2		16	
Rocky mountain spotted fever								

Category	Diseases	Tokyo					Japan	
		50th	51st	52nd	53rd	Cum 2020	53rd	Cum 2020
V	Amebiasis	3	2	2	2	116	2	610
	Viral hepatitis(excluding hepatitis A and E)				1	60		245
	CRE infection	4	6	1	1	171	18	1,922
	Acute Flaccid Paralysis (excluding Acute poliomyelitis)					4		32
	Acute encephalitis(excluding JE and WNE)					31	3	482
	Cryptosporidiosis							6
	Creutzfeldt-Jakob disease	1				17	1	149
	Severe invasive streptococcal infections(TSLS)	6	2	1		101	6	752
	Acquired immunodeficiency syndrome (AIDS)	5	5	3	1	378	2	1,075
	Giardiasis					8		27
	Invasive <i>Haemophilus influenzae</i> disease					23	1	249
	Invasive meningococcal disease					2		14
	Invasive pneumococcal disease	3	4	3	2	162	14	1,624
	Varicella (limited to hospitalized case)	1	1	1		51	1	358
	Congenital rubella syndrome							1
	Syphilis	29	54	35	6	1,560	19	5,784
	Disseminated cryptococcosis			1		18	2	150
	Tetanus					8	1	105
	Vancomycin-resistant <i>S. aureus</i> infection							
	Vancomycin-resistant Enterococcus infection	1				8		134
Pertussis	1	2	1		262	3	2,932	
Rubella					28		100	
Measles					3		13	
MDRA infection							10	

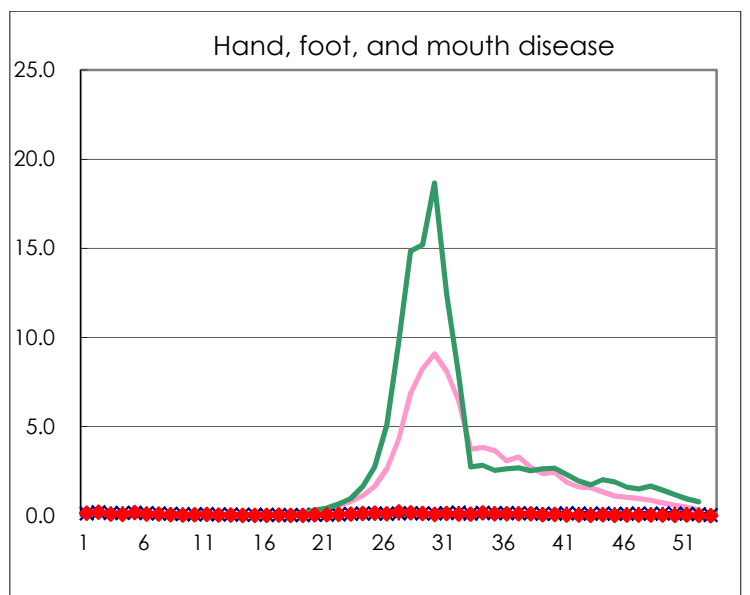
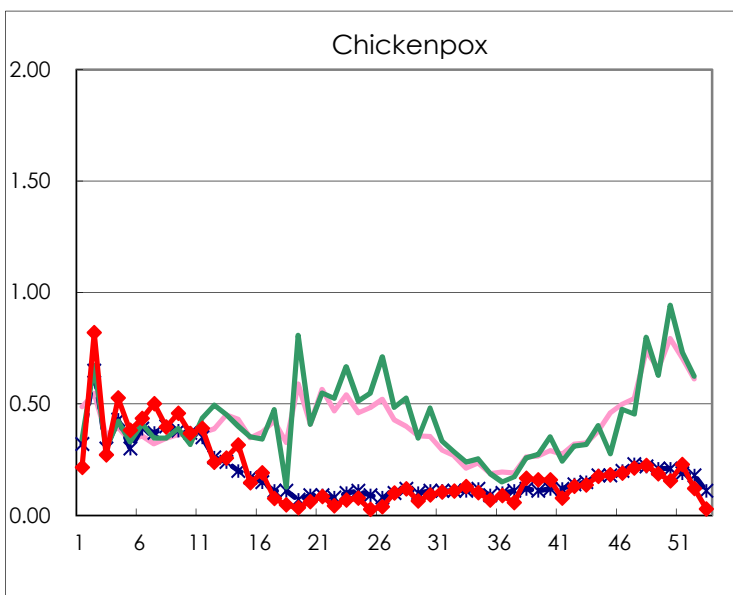
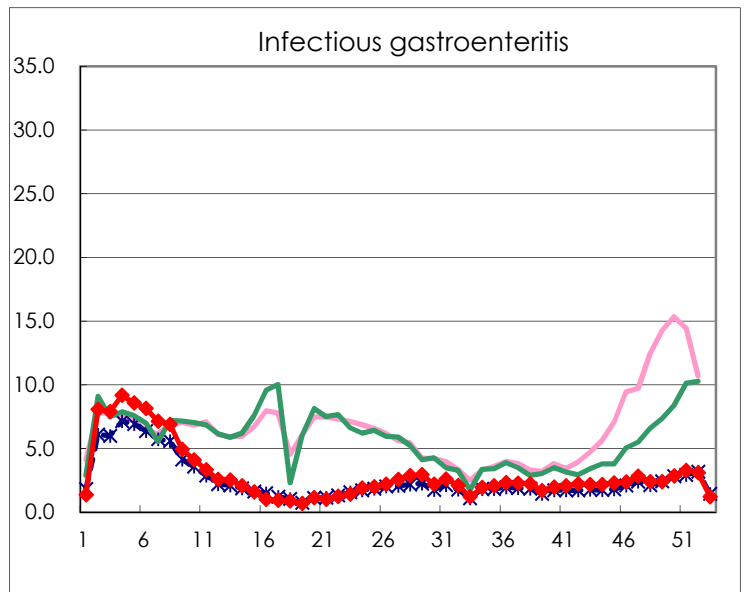
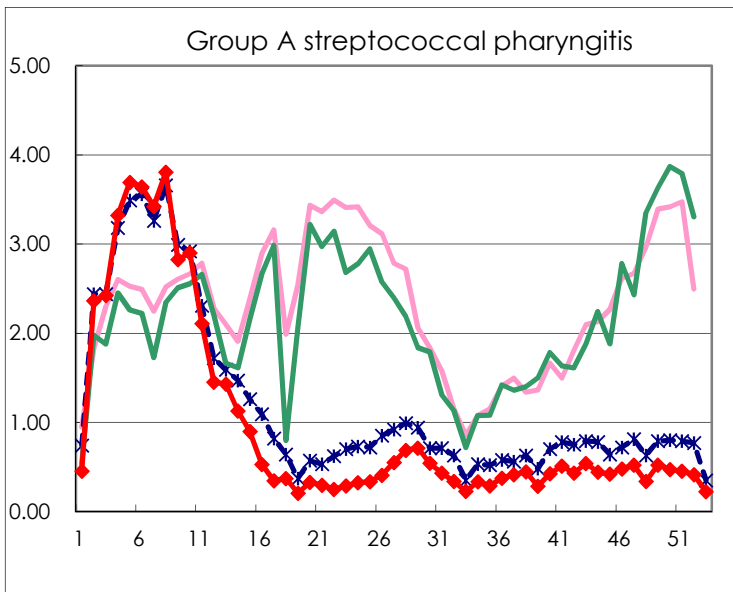
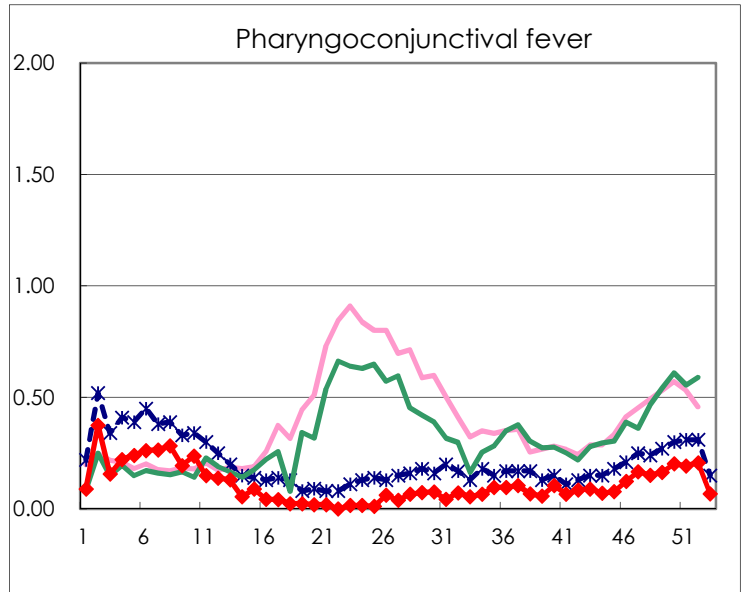
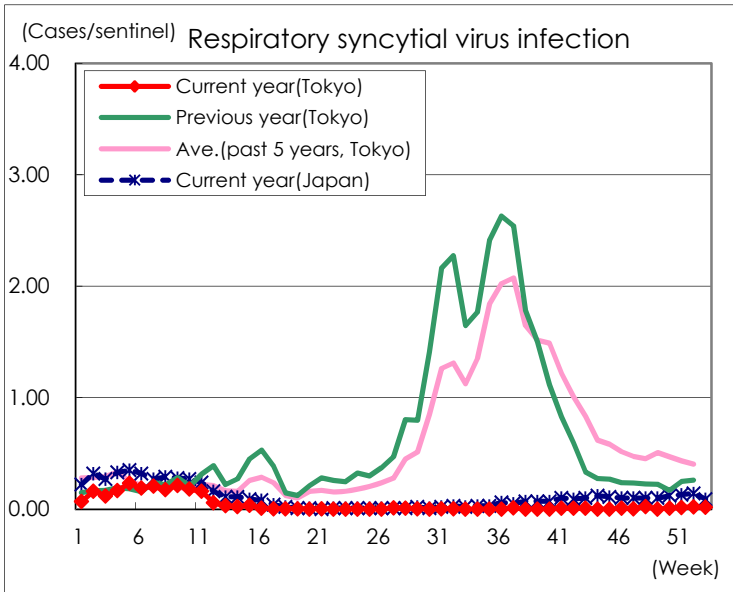
※ Designated infectious disease

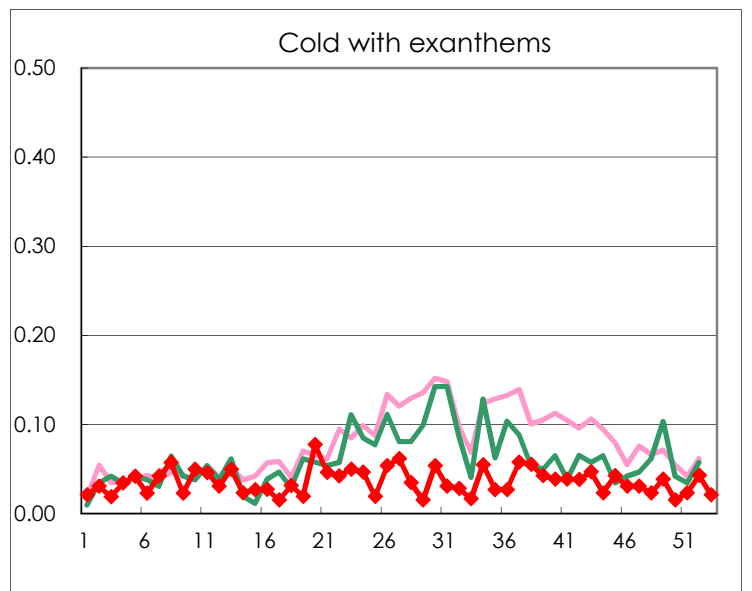
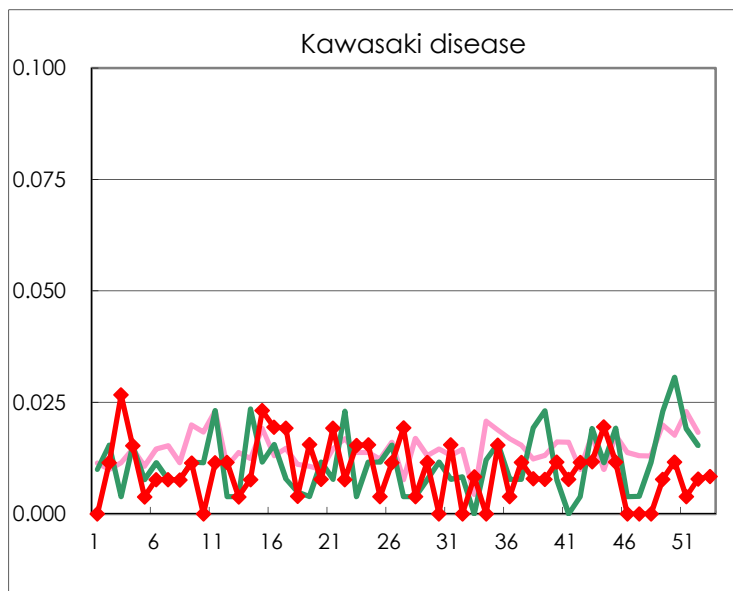
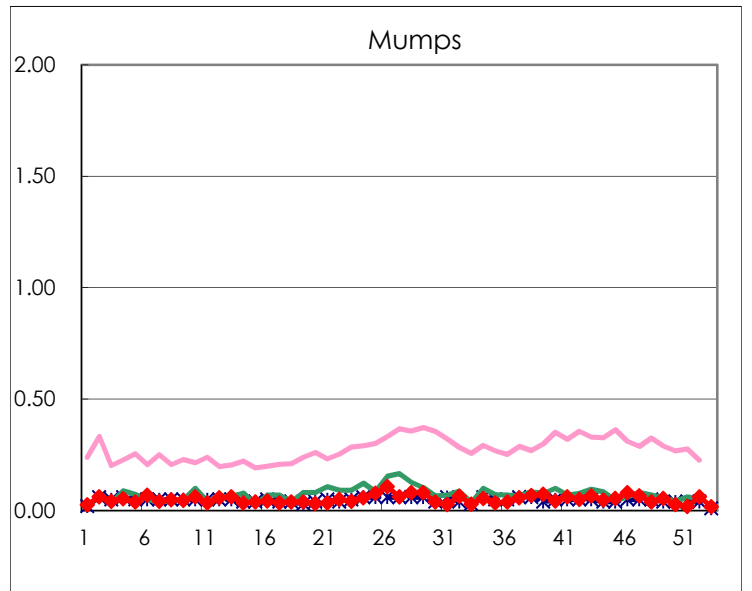
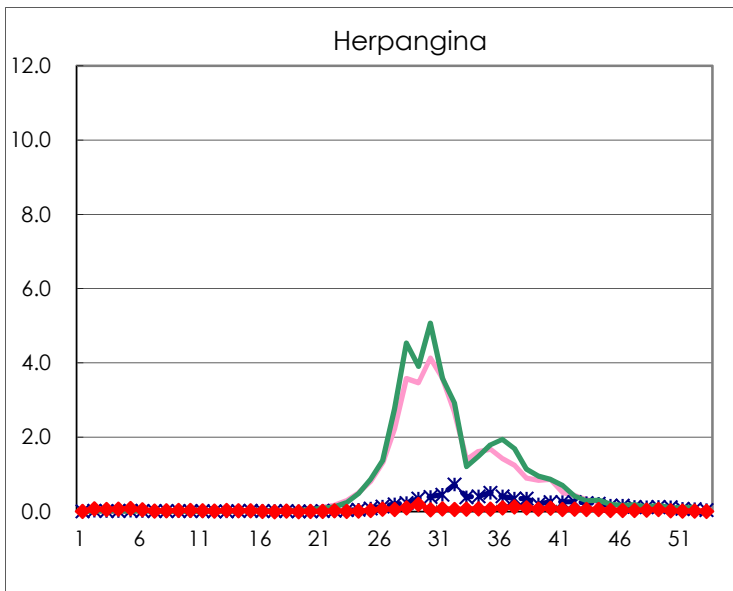
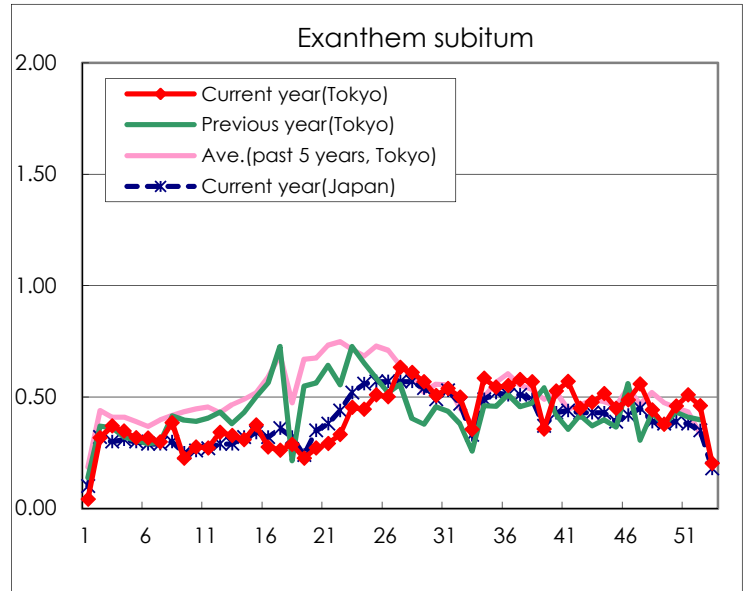
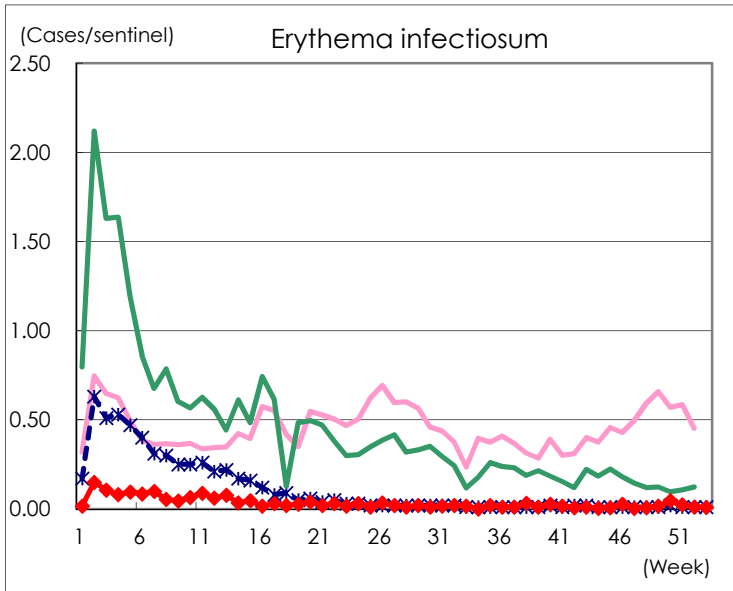
Number of patients with the diseases to be reported
by the designated clinics and hospitals

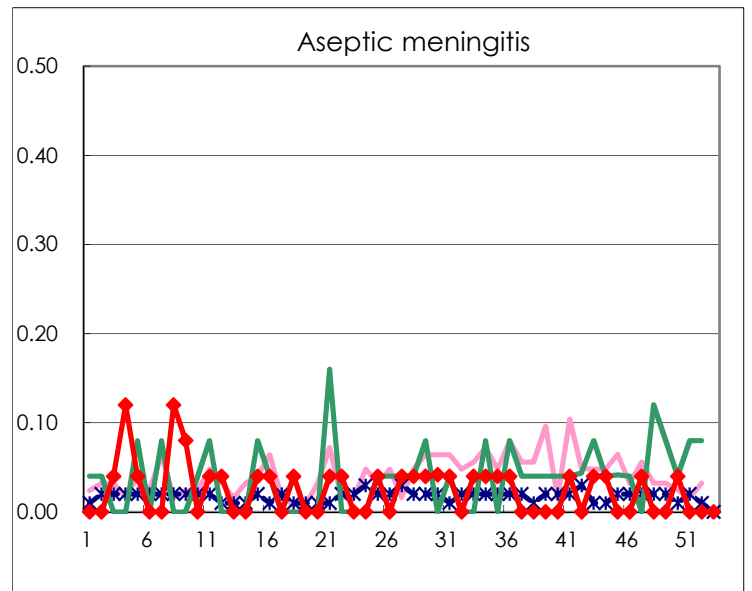
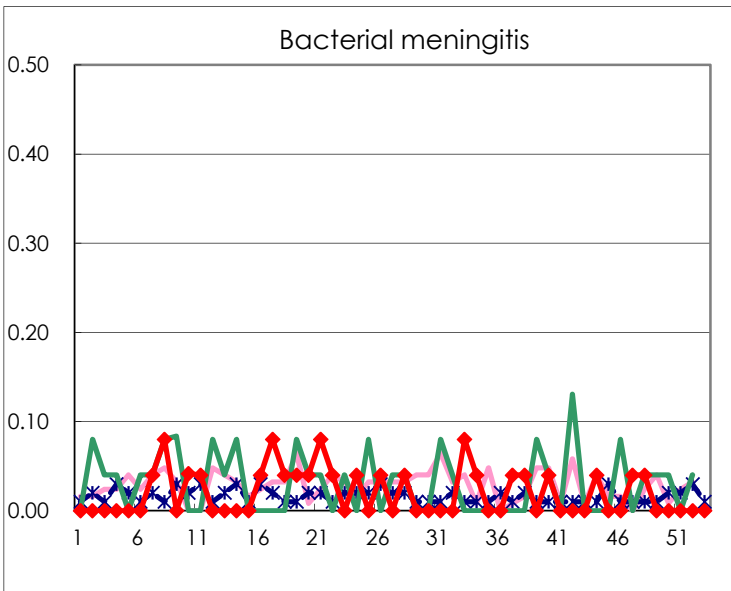
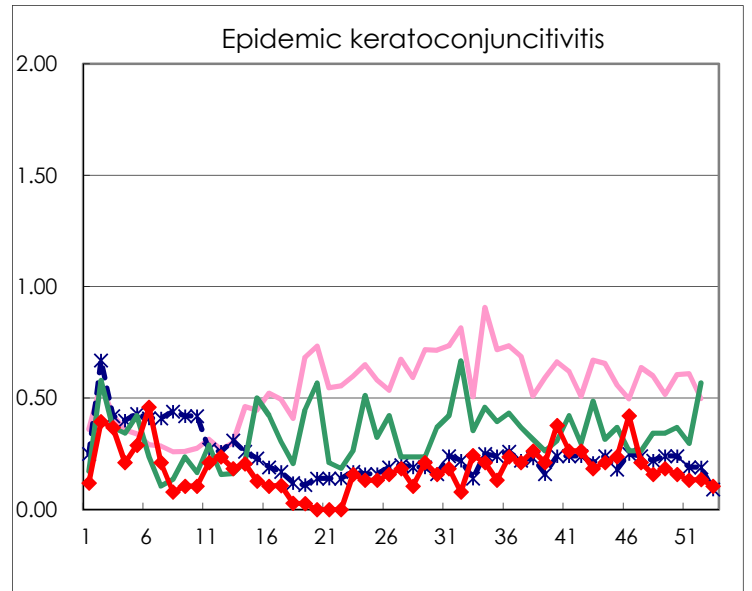
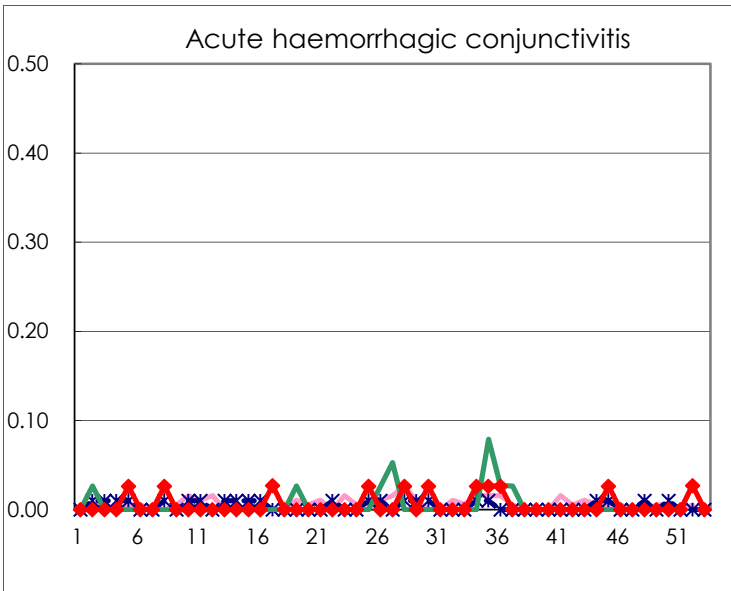
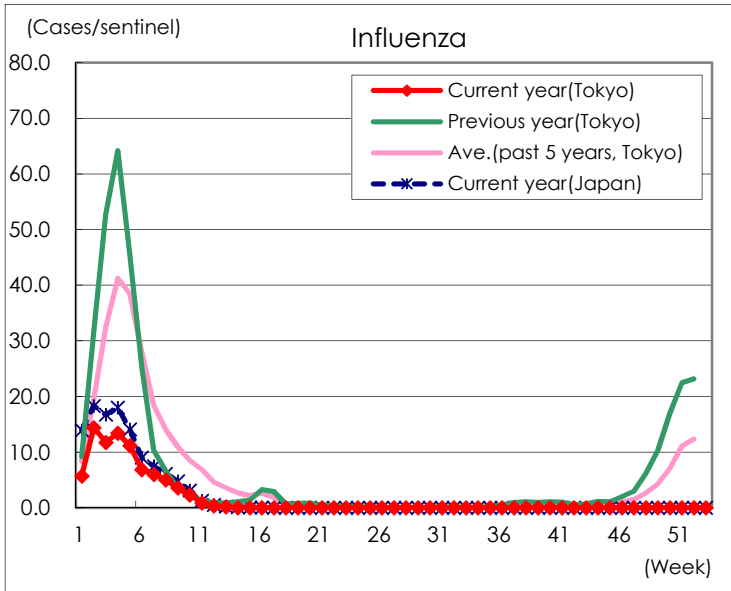
Diseases	Tokyo				
	50th	51st	52nd	53rd	/sentinel
Respiratory syncytial virus infection	2	4	5	4	0.02
Pharyngoconjunctival fever	52	50	53	16	0.07
Group A streptococcal pharyngitis	121	117	106	53	0.22
Infectious gastroenteritis	729	848	791	288	1.22
Chickenpox	40	59	31	7	0.03
Hand, foot, and mouth disease	6	8	3		
Erythema infectiosum	12	6	3	2	0.01
Exanthem subitum	118	132	118	48	0.20
Herpangina	6	4	5	3	0.01
Mumps	7	5	16	4	0.02
Kawasaki disease	3	1	2	2	0.01
Cold with exanthsms	4	6	11	5	0.02
Influenza	4	3	2	1	0.00
Acute hemorrhagic conjunctivitis			1		
Epidemic keratoconjunctivitis	6	5	5	4	0.11
Bacterial meningitis					
Aseptic meningitis	1				
Mycoplasma pneumonia			1		
Chlamydial pneumonia (excluding psittacosis)					
Infectious gastroenteritis (only by Rotavirus)				1	0.04
Influenza-Associated Hospitalizations					

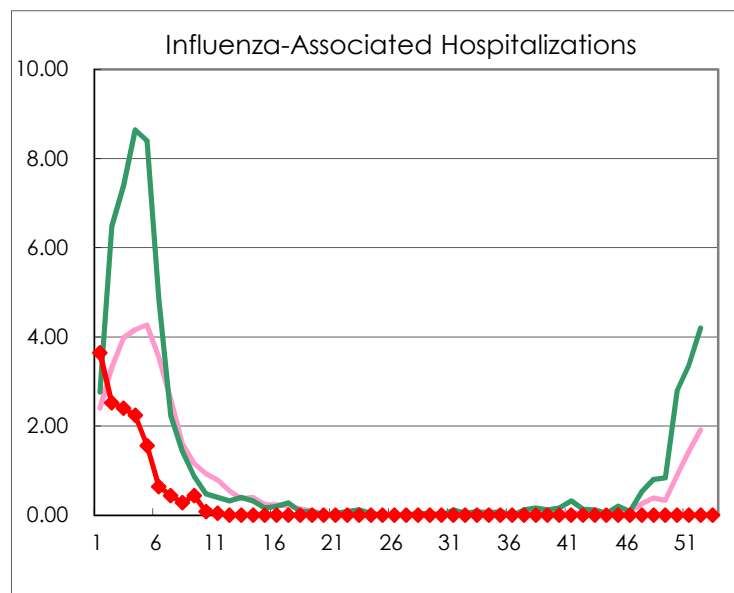
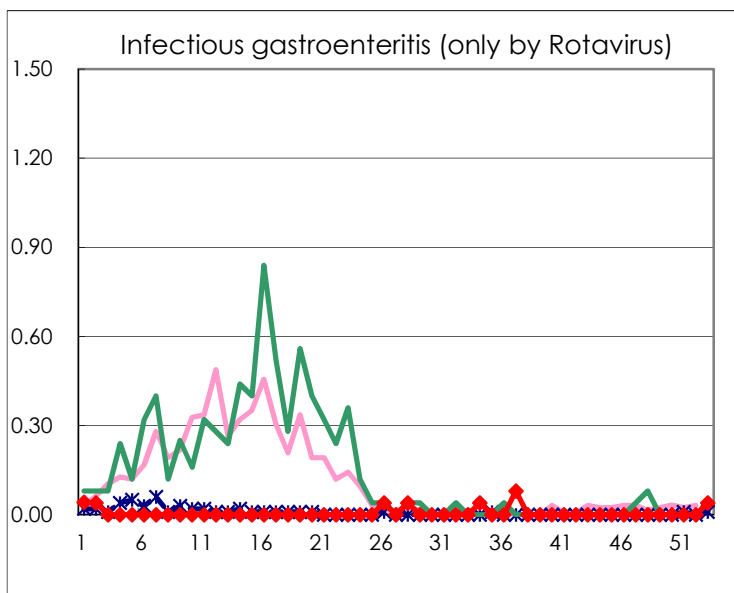
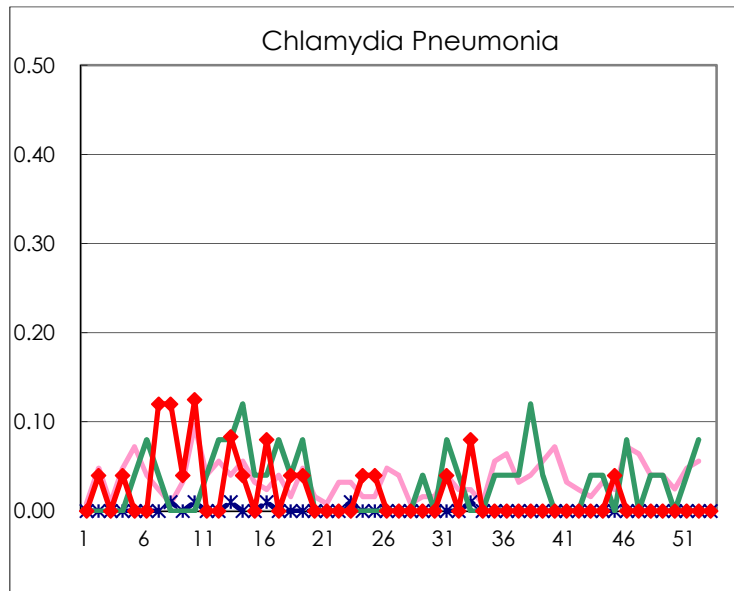
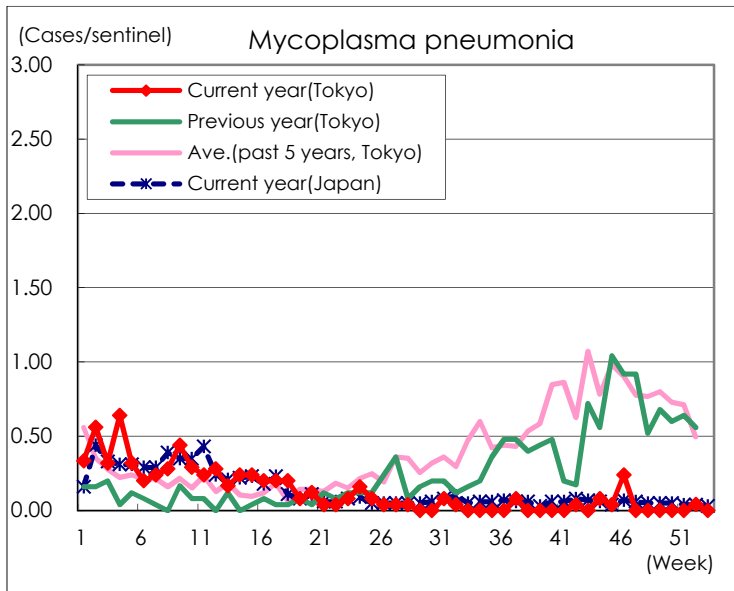
(Blank means 0.)

Disease Trend Graph (weekly reported cases per sentinel in comparison)









Number of sentinel facilities for weekly reporting		
Types of sentinels	Number of sentinels	Sentinels having reported
Pediatric	264	237
Influenza	419	379
Ophthalmic	39	38
Specially-designated	25	25