

---

INFECTIOUS DISEASES WEEKLY REPORT

# TOKYO IDWR

Tokyo Metropolitan Infectious Disease Surveillance Center

**10 May 2021 / Number 17**  
**( 4/26 ~ 5/2 )**

## Surveillance System in Tokyo, Japan

The infectious diseases which all physicians must report  
All physicians must report to health centers the incidence of the diseases which are shown at page one. Health centers electronically report the individual cases to Tokyo Metropolitan Infectious Disease Surveillance Center.

The infectious diseases required to be reported by the sentinels  
The numbers of patients who visit the sentinel clinics or hospitals during a week are reported to health centers in Tokyo. And they electronically report the numbers to Tokyo Metropolitan Infectious Disease Surveillance Center. We have about 500 sentinel clinics and hospitals in Tokyo.

Tokyo Metropolitan Institute of Public Health

TEL:81-3-3363-3213 FAX:81-3-5332-7365

e-mail:[www@tokyo-eiken.go.jp](mailto:www@tokyo-eiken.go.jp)

URL:[idsc.tokyo-eiken.go.jp/](http://idsc.tokyo-eiken.go.jp/)

---

Number of patients with the diseases which all physicians must report

Category	Diseases	Tokyo					Japan	
		14th	15th	16th	17th	Cum 2021	17th	Cum 2021
I	Ebola hemorrhagic fever							
	Crimean-Congo hemorrhagic fever							
	Smallpox							
	South American hemorrhagic fever							
	Plague							
	Marburg disease							
	Lassa fever							
II	Acute poliomyelitis							
	Tuberculosis	56	44	45	37	706	168	4,907
	Diphtheria							
	Severe Acute Respiratory Syndrome(SARS)							
	Middle East Respiratory Syndrome (MERS)							
	Avian influenza H5N1							
	Avian influenza H7N9							
III	Cholera							
	Shigellosis					2		4
	Enterohemorrhagic Escherichia coli infection	1	1	4	2	33	25	313
	Typhoid fever							
	Paratyphoid fever							
IV	Hepatitis E		5	2	4	53	6	194
	West Nile fever							
	Hepatitis A					8		25
	Echinococcosis							11
	Yellow fever							
	Psittacosis						2	3
	Omsk hemorrhagic fever							
	Relapsing fever							2
	Kyasanur forest disease							
	Q fever							
	Rabies							
	Coccidioidomycosis							
	Monkeypox							
	Zika virus infection							
	Severe Fever with Thrombocytopenia Syndrome						2	27
	Hemorrhagic fever with renal syndrome							
	Western equine encephalitis							
	Tick-borne encephalitis							
	Anthrax							
	Chikungunya fever							
	Scrub typhus(Tsutsugamushi disease)			1		2	7	80
	Dengue fever							
	Eastern equine encephalitis							
	Avian influenza (excluding H5N1 and H7N9)							
	Nipah virus infection							
	Japanese spotted fever					1	6	44
	Japanese encephalitis							
	Hantavirus pulmonary syndrome							
	Herpes B virus infection							
	Glanders							
	Brucellosis							
	Venezuelan equine encephalitis							
	Hendra virus infection							
	Epidemic typhus							
	Botulism							1
Malaria							4	
Tularemia								
Lyme disease							4	
Lyssavirus infection(excluding rabies)								
Rift valley fever								
Melioidosis								
Legionellosis	1	2		1	31	22	350	
Leptospirosis					1		2	
Rocky mountain spotted fever								

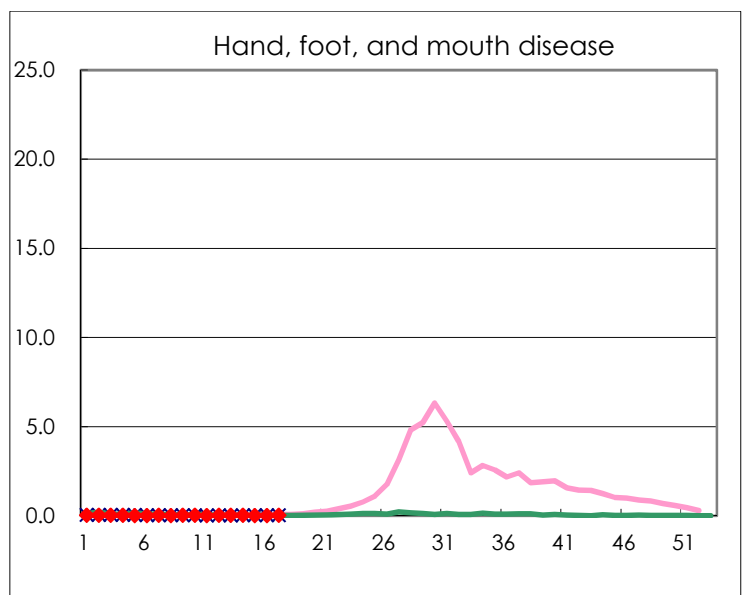
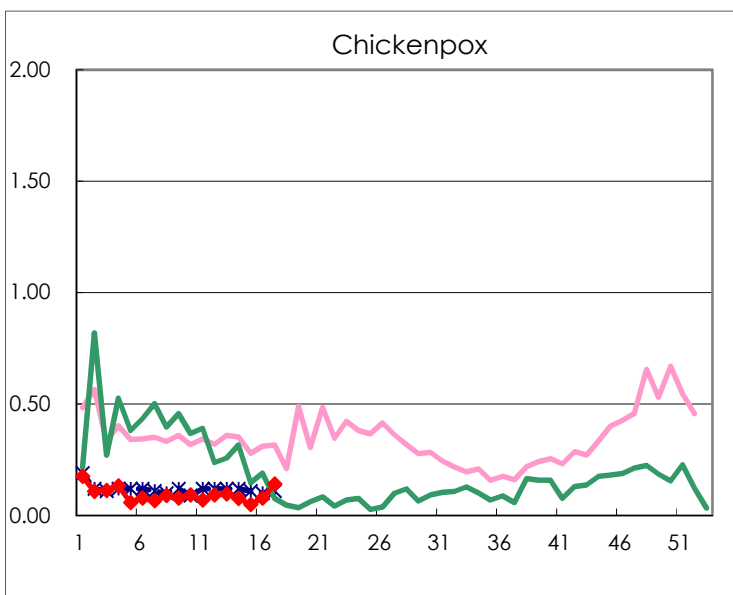
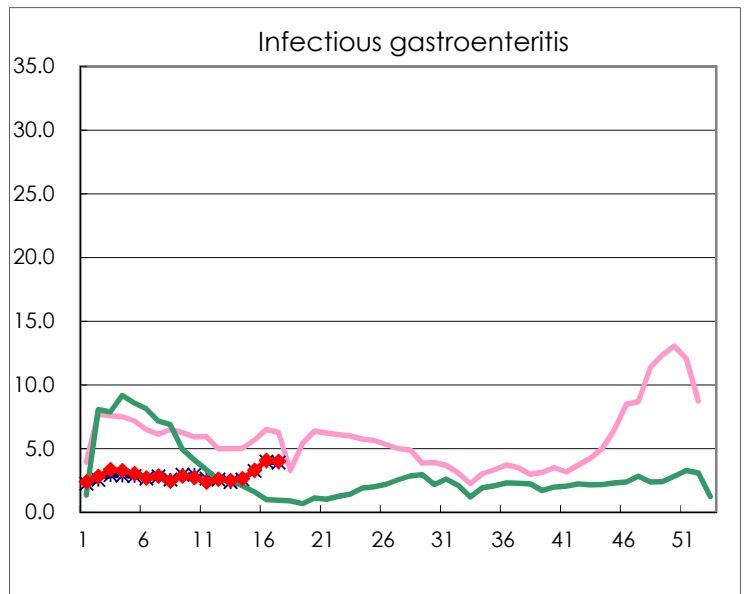
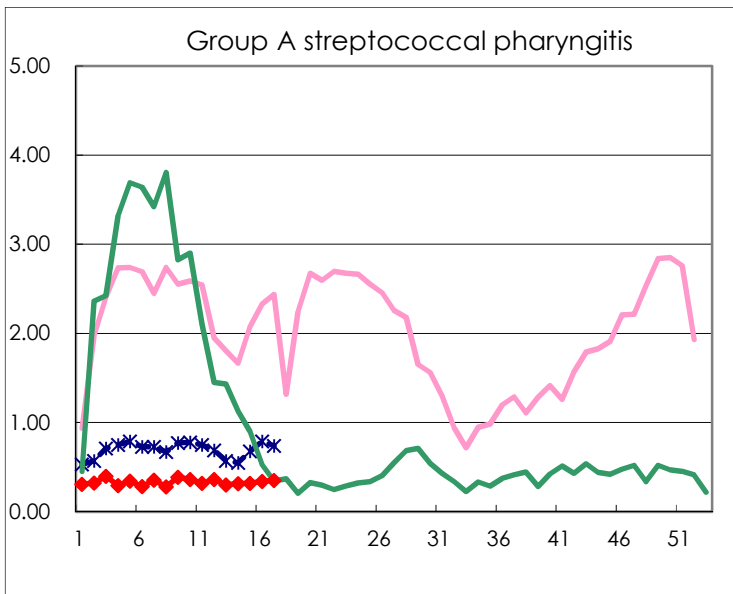
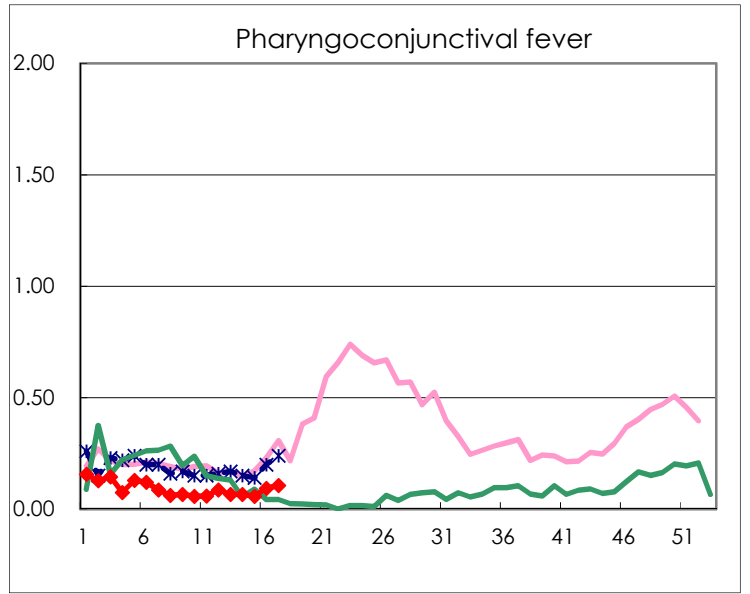
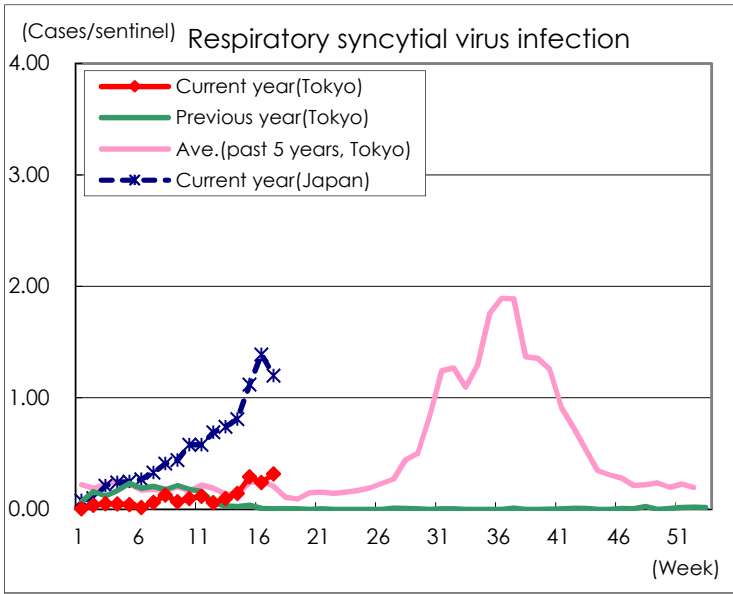
Category	Diseases	Tokyo					Japan	
		14th	15th	16th	17th	Cum 2021	17th	Cum 2021
V	Amebiasis	2	1	3		25	6	165
	Viral hepatitis(excluding hepatitis A and E)				2	22		66
	CRE infection	4	2	4	2	58	16	537
	Acute Flaccid Paralysis (excluding Acute poliomyelitis)		1			1		6
	Acute encephalitis(excluding JE and WNE)		1			7	2	103
	Cryptosporidiosis							1
	Creutzfeldt-Jakob disease	1				6	2	58
	Severe invasive streptococcal infections(TSLS)	1	1		4	24	5	222
	Acquired immunodeficiency syndrome (AIDS)	7	7	9	6	122	7	315
	Giardiasis					4		11
	Invasive <i>Haemophilus influenzae</i> disease	2	1	1		7	1	70
	Invasive meningococcal disease							1
	Invasive pneumococcal disease	3	1	2	5	34	33	423
	Varicella (limited to hospitalized case)		2		1	12	2	90
	Congenital rubella syndrome							1
	Syphilis	59	38	35	35	664	55	1,956
	Disseminated cryptococcosis					3	1	41
	Tetanus	1				1		23
	Vancomycin-resistant <i>S. aureus</i> infection							
	Vancomycin-resistant <i>Enterococcus</i> infection			1		1		35
Pertussis	4		1	1	27	3	192	
Rubella					1		6	
Measles							1	
MDRA infection								

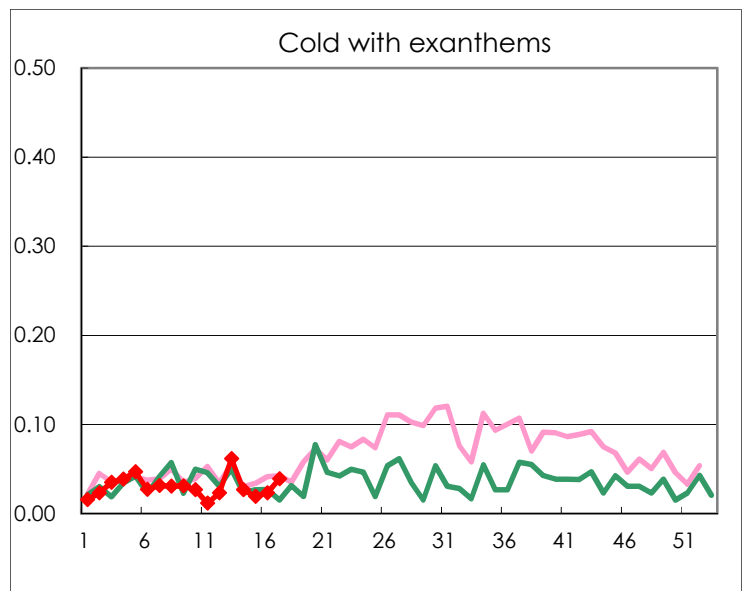
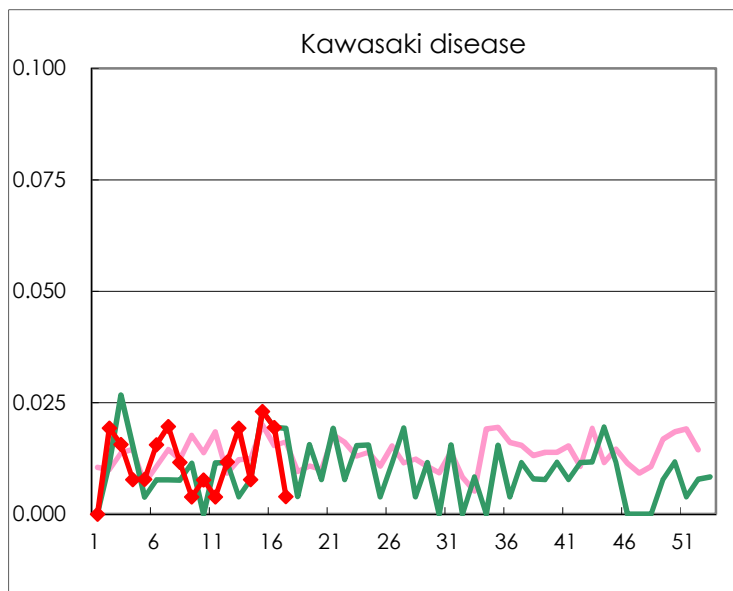
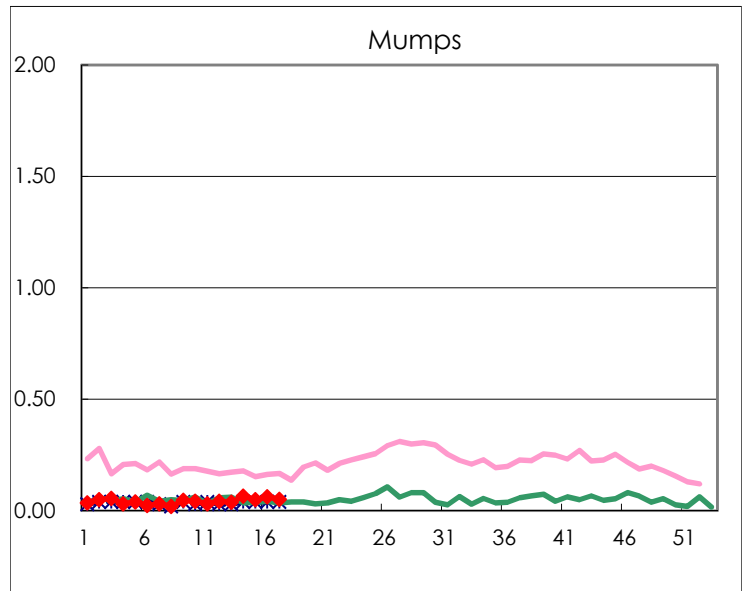
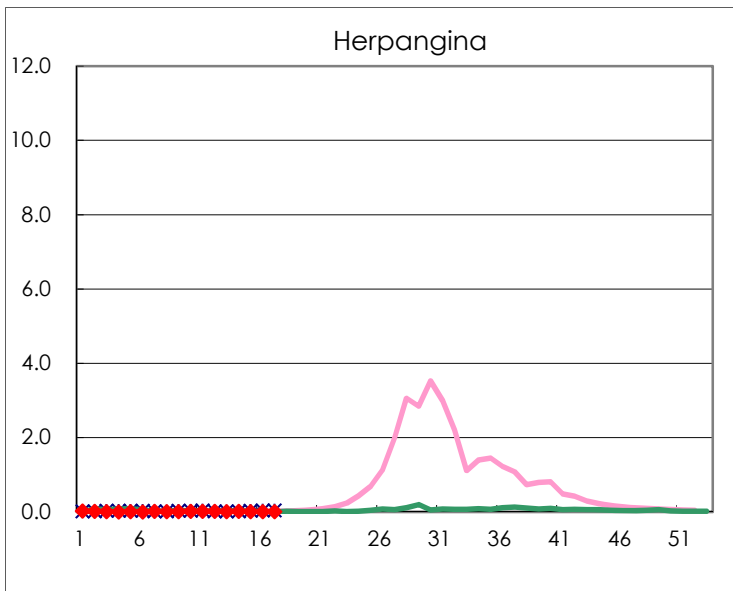
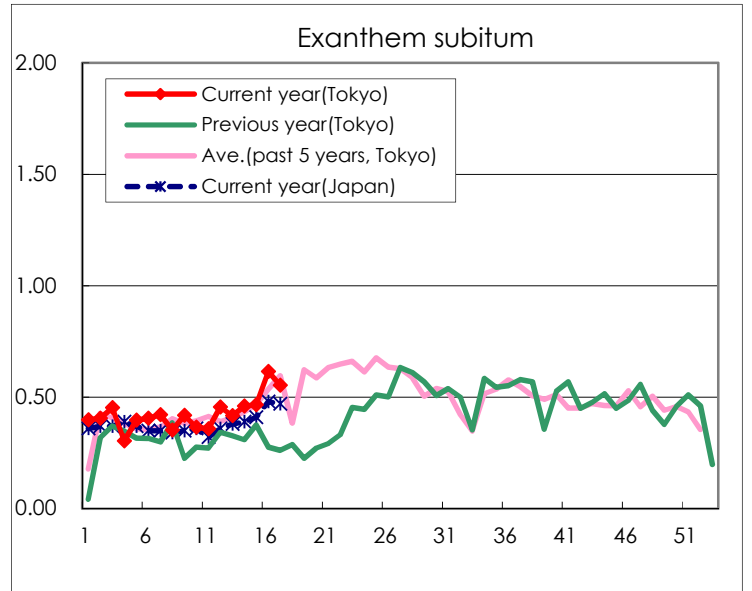
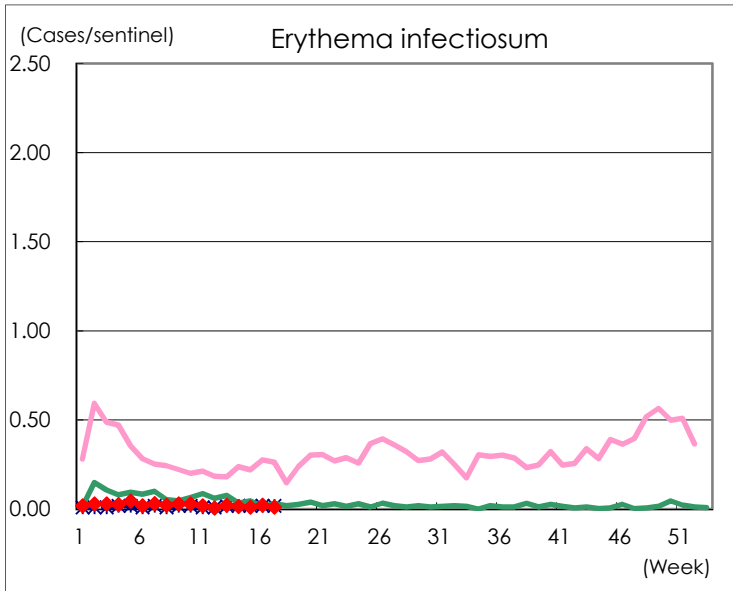
Number of patients with the diseases to be reported  
by the designated clinics and hospitals

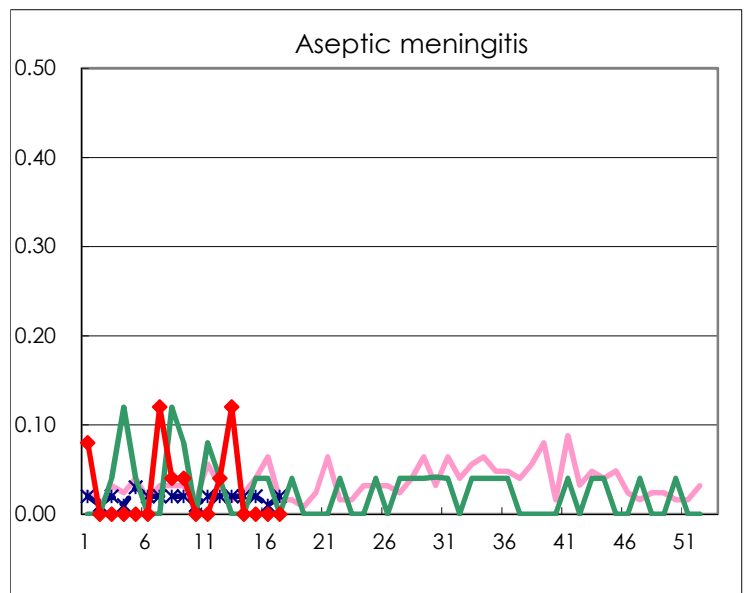
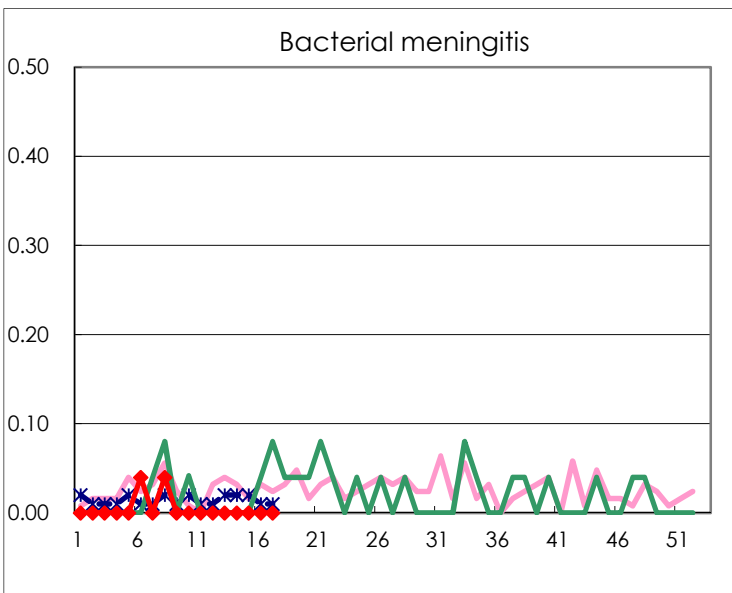
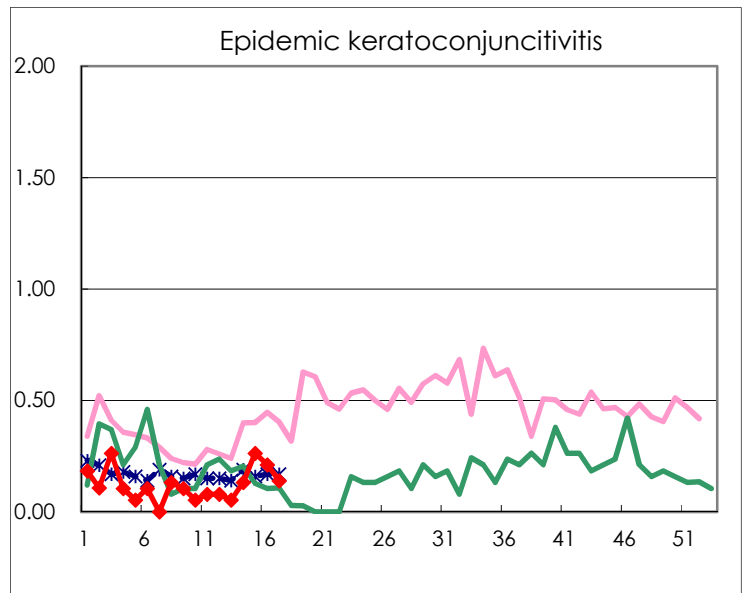
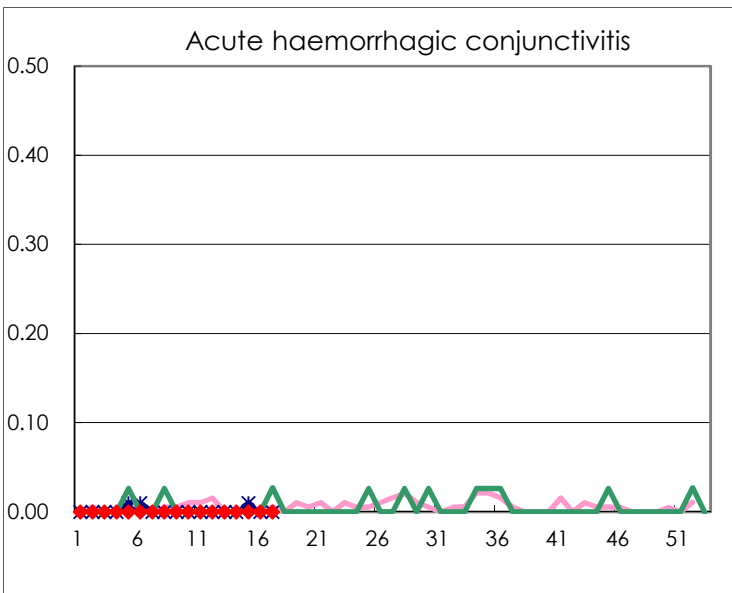
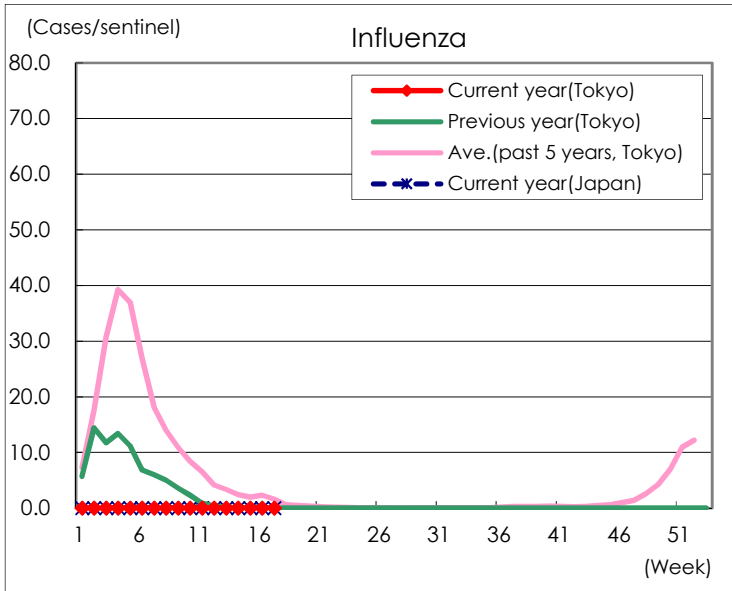
Diseases	Tokyo				
	14th	15th	16th	17th	/sentinel
Respiratory syncytial virus infection	37	76	62	81	0.32
Pharyngoconjunctival fever	17	15	24	27	0.11
Group A streptococcal pharyngitis	82	83	88	90	0.35
Infectious gastroenteritis	682	851	1,044	1,016	3.98
Chickenpox	20	13	20	36	0.14
Hand, foot, and mouth disease	6		3	6	0.02
Erythema infectiosum	4	3	6	3	0.01
Exanthem subitum	119	121	158	141	0.55
Herpangina	5	2	2	3	0.01
Mumps	17	13	16	13	0.05
Kawasaki disease	2	6	5	1	0.00
Cold with exanthems	7	5	6	10	0.04
Influenza	1				
Acute hemorrhagic conjunctivitis					
Epidemic keratoconjunctivitis	5	10	8	5	0.14
Bacterial meningitis					
Aseptic meningitis					
Mycoplasma pneumonia					
Chlamydial pneumonia (excluding psittacosis)	1		1		
Infectious gastroenteritis (only by Rotavirus)					
Influenza-Associated Hospitalizations					

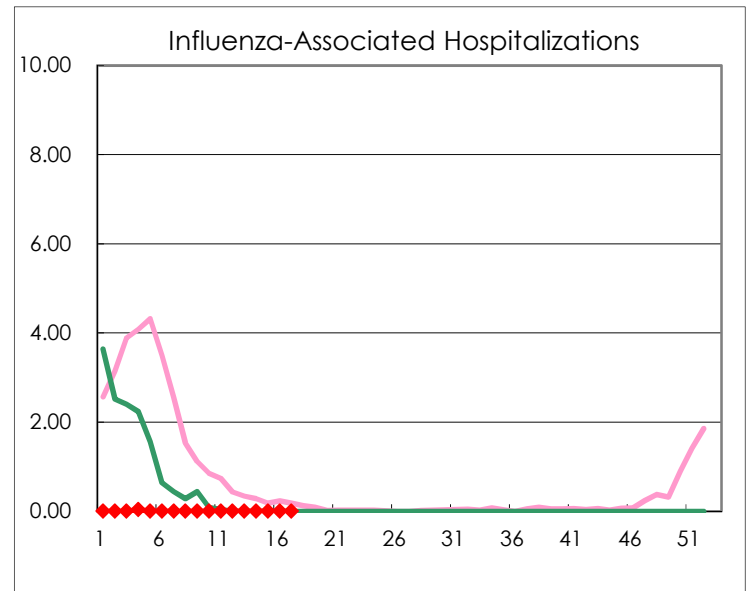
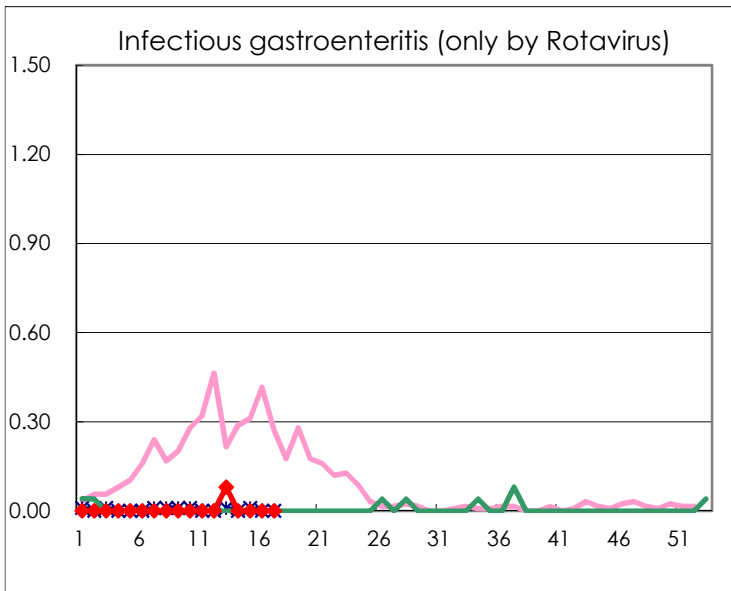
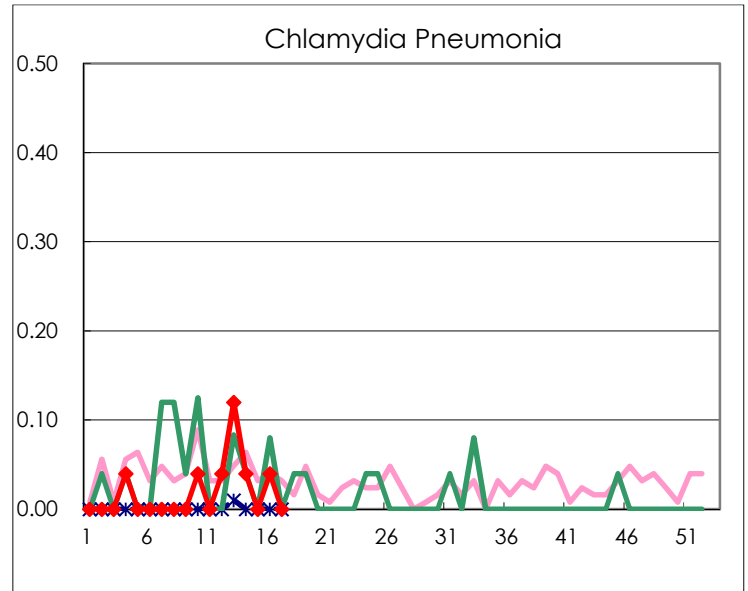
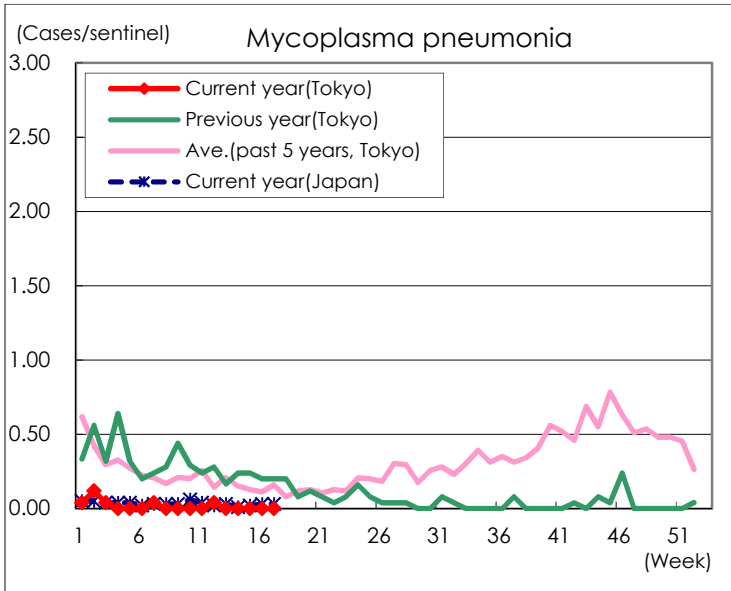
( Blank means 0. )

# Disease Trend Graph (weekly reported cases per sentinel in comparison)









Number of sentinel facilities for weekly reporting		
Types of sentinels	Number of sentinels	Sentinels having reported
Pediatric	264	255
Influenza	419	393
Ophthalmic	39	36
Specially-designated	25	24