

---

INFECTIOUS DISEASES WEEKLY REPORT

# TOKYO IDWR

Tokyo Metropolitan Infectious Disease Surveillance Center

**13 May 2021 / Number 18**  
**( 5/3 ~ 5/9 )**

## Surveillance System in Tokyo, Japan

The infectious diseases which all physicians must report  
All physicians must report to health centers the incidence of the diseases which are shown at page one. Health centers electronically report the individual cases to Tokyo Metropolitan Infectious Disease Surveillance Center.

The infectious diseases required to be reported by the sentinels  
The numbers of patients who visit the sentinel clinics or hospitals during a week are reported to health centers in Tokyo. And they electronically report the numbers to Tokyo Metropolitan Infectious Disease Surveillance Center. We have about 500 sentinel clinics and hospitals in Tokyo.

Tokyo Metropolitan Institute of Public Health

TEL:81-3-3363-3213 FAX:81-3-5332-7365

e-mail:[www@tokyo-eiken.go.jp](mailto:www@tokyo-eiken.go.jp)

URL:[idsc.tokyo-eiken.go.jp/](http://idsc.tokyo-eiken.go.jp/)

---

Number of patients with the diseases which all physicians must report

| Category                               | Diseases                                     | Tokyo |      |      |      |          | Japan |          |
|--|--|-------|------|------|------|----------|-------|----------|
|  |  | 15th  | 16th | 17th | 18th | Cum 2021 | 18th  | Cum 2021 |
| I                                      | Ebola hemorrhagic fever                      |       |      |      |      |          |       |          |
|  | Crimean-Congo hemorrhagic fever              |       |      |      |      |          |       |          |
|  | Smallpox                                     |       |      |      |      |          |       |          |
|  | South American hemorrhagic fever             |       |      |      |      |          |       |          |
|  | Plague                                       |       |      |      |      |          |       |          |
|  | Marburg disease                              |       |      |      |      |          |       |          |
|  | Lassa fever                                  |       |      |      |      |          |       |          |
| II                                     | Acute poliomyelitis                          |       |      |      |      |          |       |          |
|  | Tuberculosis                                 | 45    | 45   | 39   | 24   | 733      | 104   | 5,108    |
|  | Diphtheria                                   |       |      |      |      |          |       |          |
|  | Severe Acute Respiratory Syndrome(SARS)      |       |      |      |      |          |       |          |
|  | Middle East Respiratory Syndrome (MERS)      |       |      |      |      |          |       |          |
|  | Avian influenza H5N1                         |       |      |      |      |          |       |          |
|  | Avian influenza H7N9                         |       |      |      |      |          |       |          |
| III                                    | Cholera                                      |       |      |      |      |          |       |          |
|  | Shigellosis                                  |       |      |      |      | 2        |       | 4        |
|  | Enterohemorrhagic Escherichia coli infection | 1     | 4    | 2    | 2    | 35       | 24    | 343      |
|  | Typhoid fever                                |       |      |      |      |          |       |          |
|  | Paratyphoid fever                            |       |      |      |      |          |       |          |
| IV                                     | Hepatitis E                                  | 5     | 2    | 4    | 1    | 54       | 6     | 201      |
|  | West Nile fever                              |       |      |      |      |          |       |          |
|  | Hepatitis A                                  |       |      |      |      | 8        |       | 25       |
|  | Echinococcosis                               |       |      |      |      |          |       | 11       |
|  | Yellow fever                                 |       |      |      |      |          |       |          |
|  | Psittacosis                                  |       |      |      |      |          |       | 3        |
|  | Omsk hemorrhagic fever                       |       |      |      |      |          |       |          |
|  | Relapsing fever                              |       |      |      |      |          |       | 2        |
|  | Kyasanur forest disease                      |       |      |      |      |          |       |          |
|  | Q fever                                      |       |      |      |      |          |       |          |
|  | Rabies                                       |       |      |      |      |          |       |          |
|  | Coccidioidomycosis                           |       |      |      |      |          |       |          |
|  | Monkeypox                                    |       |      |      |      |          |       |          |
|  | Zika virus infection                         |       |      |      |      |          |       |          |
|  | Severe Fever with Thrombocytopenia Syndrome  |       |      |      |      |          | 1     | 29       |
|  | Hemorrhagic fever with renal syndrome        |       |      |      |      |          |       |          |
|  | Western equine encephalitis                  |       |      |      |      |          |       |          |
|  | Tick-borne encephalitis                      |       |      |      |      |          |       |          |
|  | Anthrax                                      |       |      |      |      |          |       |          |
|  | Chikungunya fever                            |       |      |      |      |          |       |          |
|  | Scrub typhus(Tsutsugamushi disease)          |       | 1    |      |      | 2        | 1     | 81       |
|  | Dengue fever                                 |       |      |      |      |          |       |          |
|  | Eastern equine encephalitis                  |       |      |      |      |          |       |          |
|  | Avian influenza (excluding H5N1 and H7N9)    |       |      |      |      |          |       |          |
|  | Nipah virus infection                        |       |      |      |      |          |       |          |
|  | Japanese spotted fever                       |       |      |      |      | 1        | 2     | 49       |
|  | Japanese encephalitis                        |       |      |      |      |          |       |          |
|  | Hantavirus pulmonary syndrome                |       |      |      |      |          |       |          |
|  | Herpes B virus infection                     |       |      |      |      |          |       |          |
|  | Glanders                                     |       |      |      |      |          |       |          |
|  | Brucellosis                                  |       |      |      |      |          |       |          |
|  | Venezuelan equine encephalitis               |       |      |      |      |          |       |          |
|  | Hendra virus infection                       |       |      |      |      |          |       |          |
|  | Epidemic typhus                              |       |      |      |      |          |       |          |
| Botulism                               |  |       |      |      |      |          | 1     |          |
| Malaria                                |  |       |      |      |      |          | 4     |          |
| Tularemia                              |  |       |      |      |      |          |       |          |
| Lyme disease                           |  |       |      |      |      |          | 5     |          |
| Lyssavirus infection(excluding rabies) |  |       |      |      |      |          |       |          |
| Rift valley fever                      |  |       |      |      |      |          |       |          |
| Melioidosis                            |  |       |      |      |      |          |       |          |
| Legionellosis                          | 2  |       | 1    |      | 31   | 7        | 359   |          |
| Leptospirosis                          |  |       |      |      | 1    |          | 2     |          |
| Rocky mountain spotted fever           |  |       |      |      |      |          |       |          |

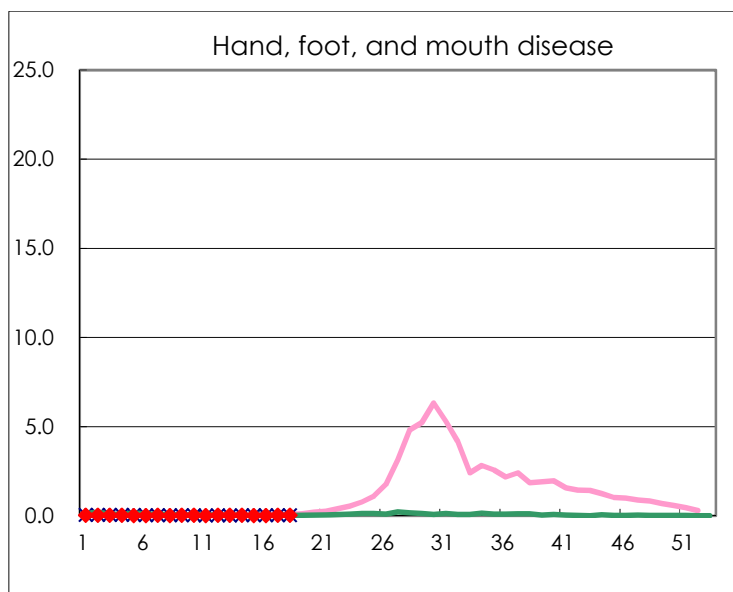
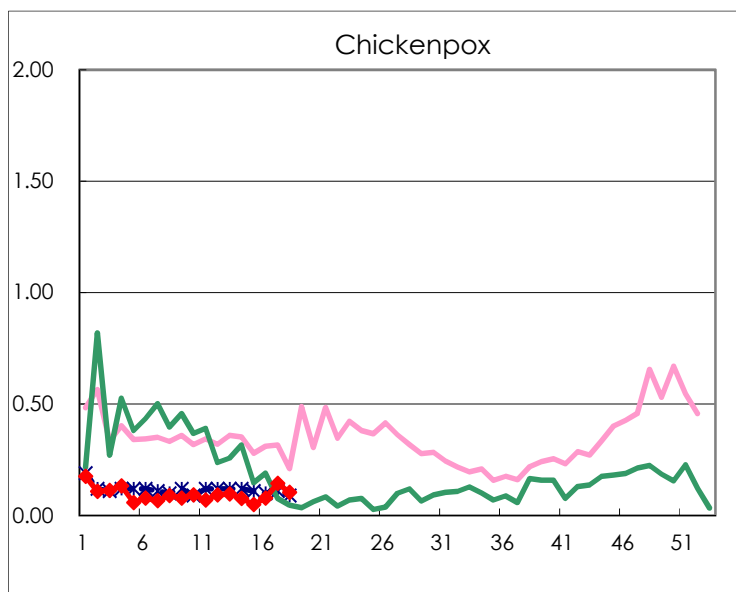
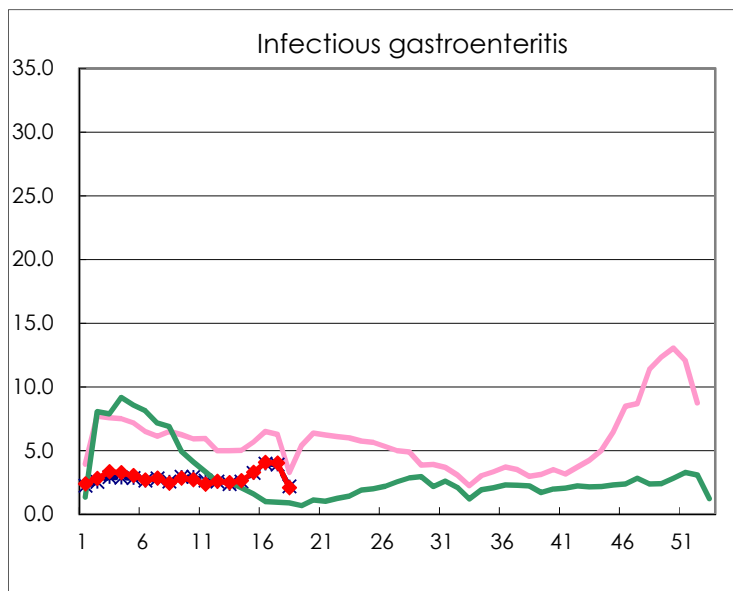
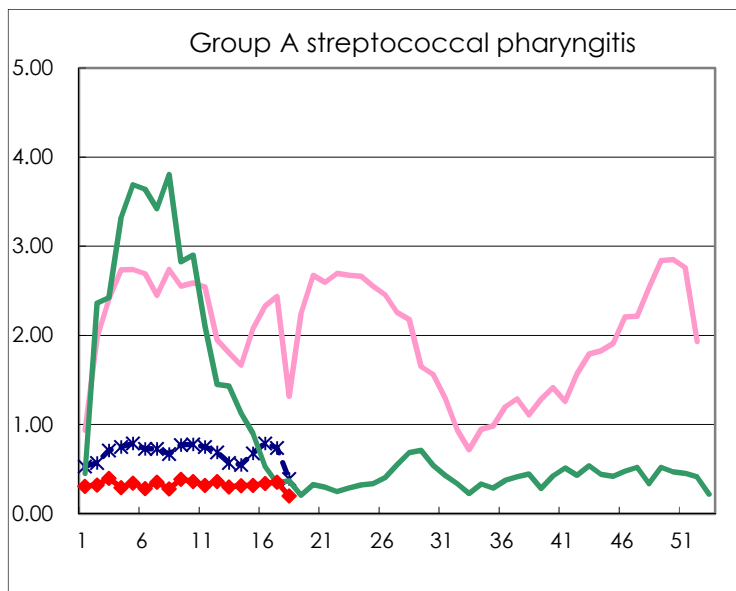
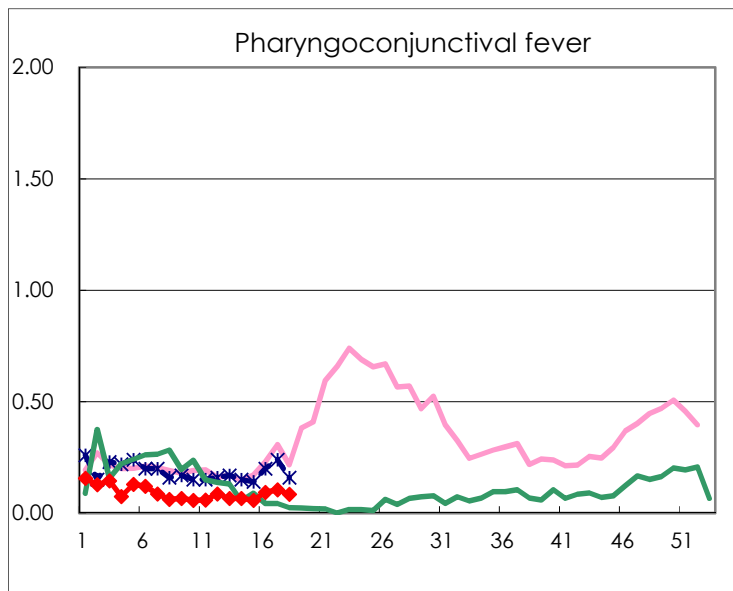
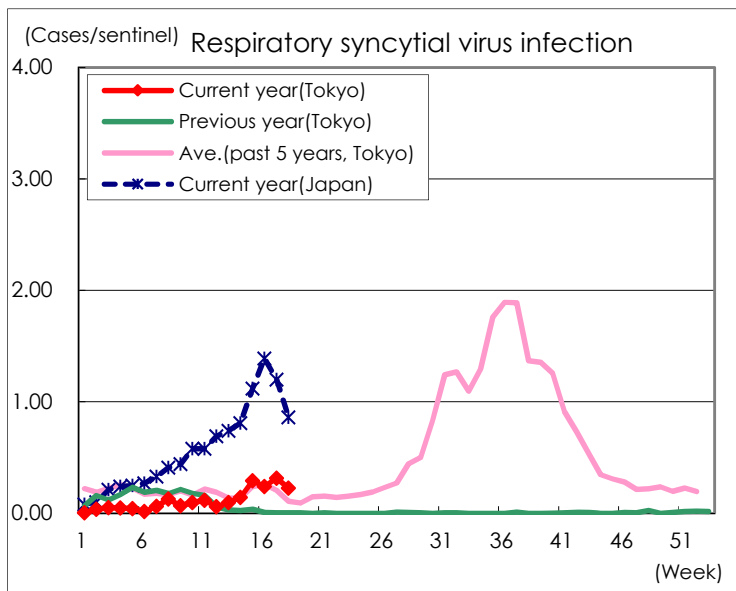
| Category       | Diseases  | Tokyo |      |      |      |          | Japan |          |
|----------------|---|-------|------|------|------|----------|-------|----------|
|                |   | 15th  | 16th | 17th | 18th | Cum 2021 | 18th  | Cum 2021 |
| V              | Amebiasis   | 1     | 4    |      | 1    | 27       | 5     | 174      |
|                | Viral hepatitis(excluding hepatitis A and E)            |       |      | 2    |      | 22       | 2     | 70       |
|                | CRE infection   | 3     | 4    | 2    | 2    | 61       | 11    | 554      |
|                | Acute Flaccid Paralysis (excluding Acute poliomyelitis) | 1     |      |      |      | 1        |       | 6        |
|                | Acute encephalitis(excluding JE and WNE)                | 1     |      |      |      | 7        | 1     | 105      |
|                | Cryptosporidiosis                                       |       |      |      |      |          |       | 1        |
|                | Creutzfeldt-Jakob disease                               |       |      |      | 1    | 7        | 1     | 60       |
|                | Severe invasive streptococcal infections(TSLS)          | 1     |      | 3    | 1    | 24       | 4     | 227      |
|                | Acquired immunodeficiency syndrome (AIDS)               | 7     | 9    | 6    | 1    | 123      | 4     | 323      |
|                | Giardiasis  |       |      |      |      | 4        | 1     | 12       |
|                | Invasive <i>Haemophilus influenzae</i> disease          | 1     | 1    |      |      | 7        | 3     | 77       |
|                | Invasive meningococcal disease                          |       |      |      |      |          |       | 1        |
|                | Invasive pneumococcal disease                           | 1     | 2    | 5    | 6    | 40       | 28    | 465      |
|                | Varicella (limited to hospitalized case)                | 2     |      | 1    |      | 12       | 1     | 93       |
|                | Congenital rubella syndrome                             |       |      |      |      |          |       | 1        |
|                | Syphilis  | 38    | 35   | 40   | 29   | 698      | 47    | 2,048    |
|                | Disseminated cryptococcosis                             |       |      |      | 1    | 4        |       | 43       |
|                | Tetanus   |       |      |      |      | 1        |       | 23       |
|                | Vancomycin-resistant <i>S. aureus</i> infection         |       |      |      |      |          |       |          |
|                | Vancomycin-resistant <i>Enterococcus</i> infection      |       | 1    |      |      | 1        |       | 36       |
|                | Pertussis   |       | 1    | 2    |      | 28       | 5     | 203      |
| Rubella        |   |       |      |      | 1    |          | 6     |          |
| Measles        |   |       |      |      |      |          |       |          |
| MDRA infection |   |       |      |      |      |          |       |          |

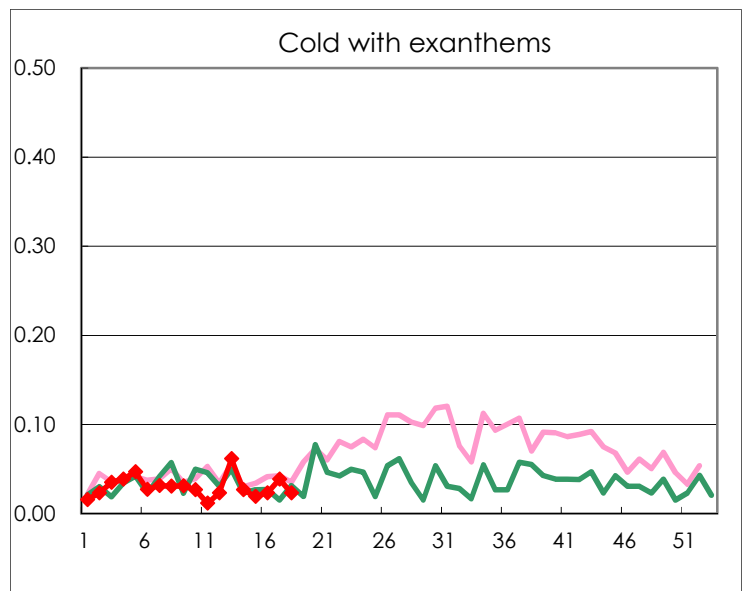
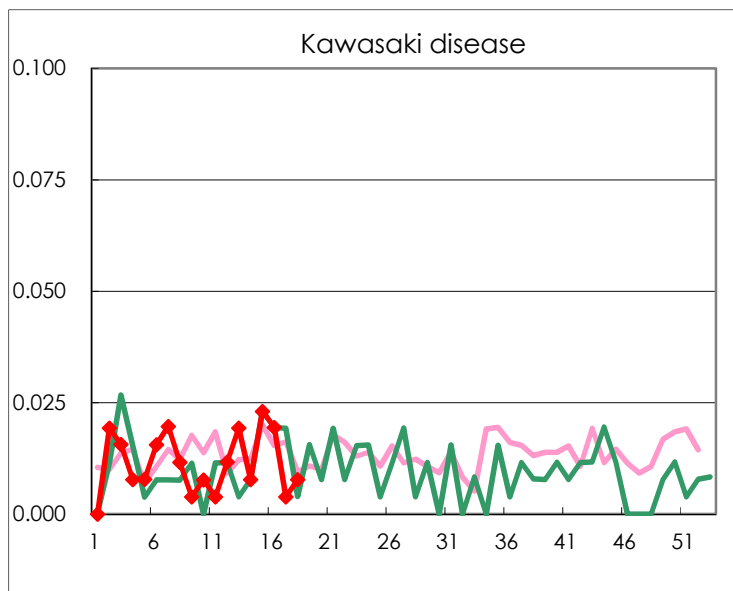
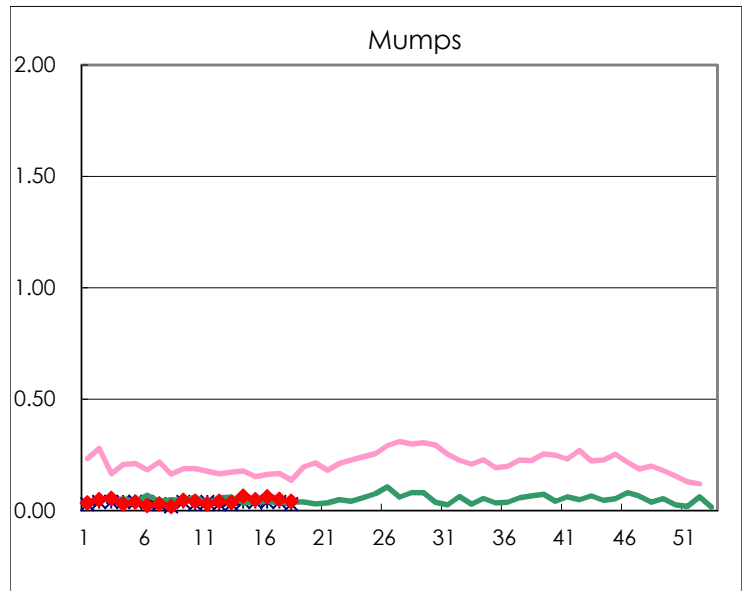
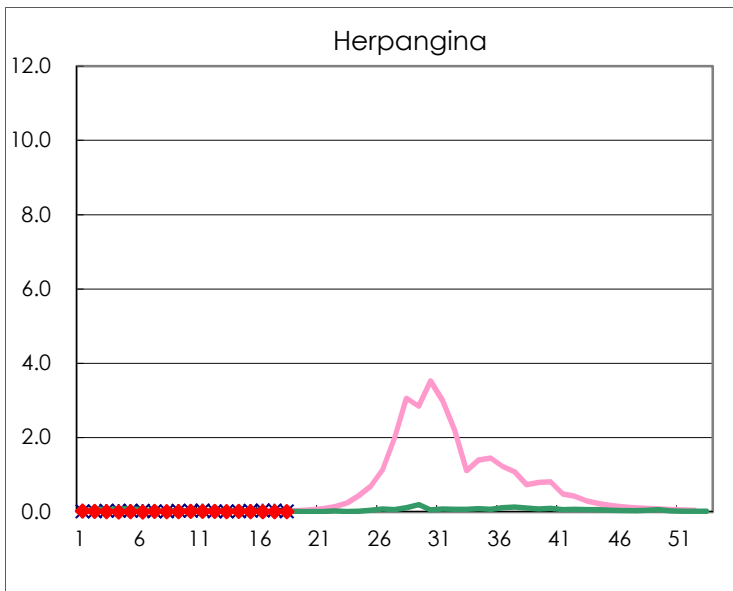
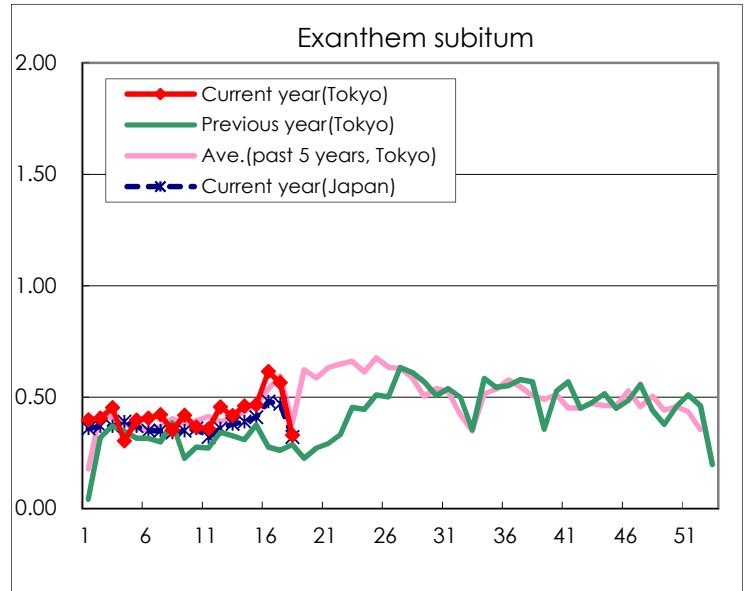
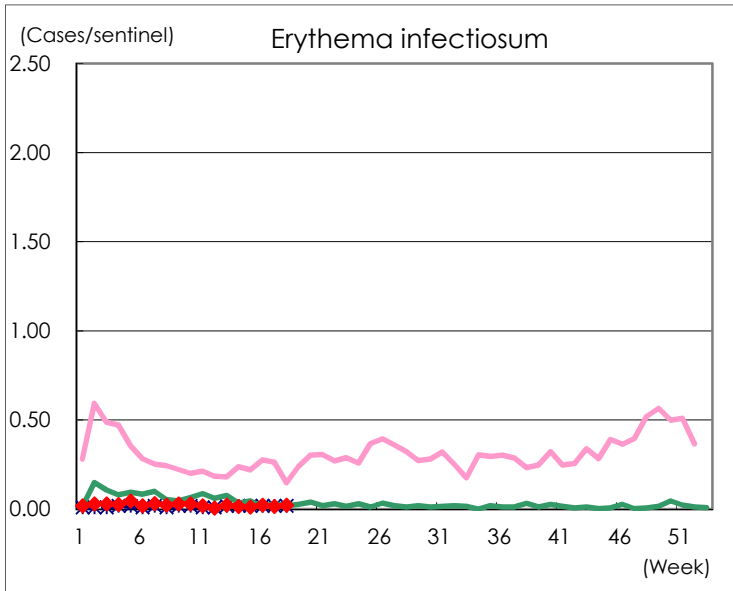
Number of patients with the diseases to be reported  
by the designated clinics and hospitals

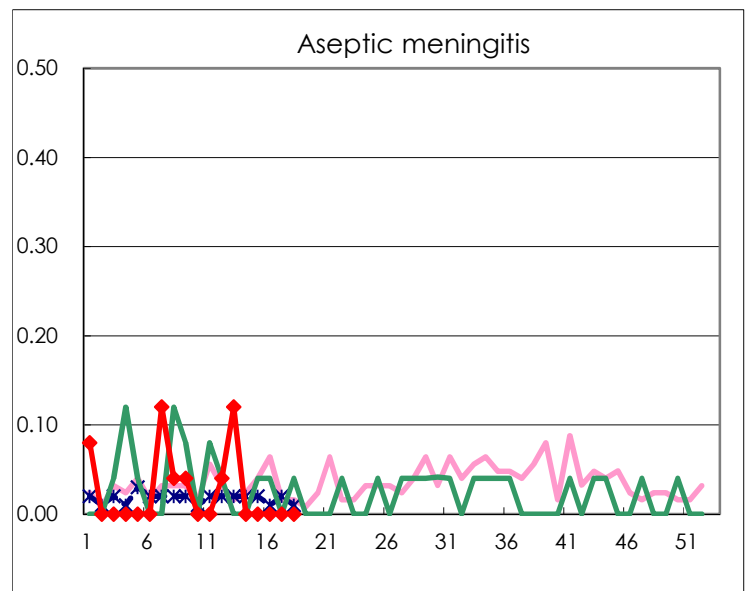
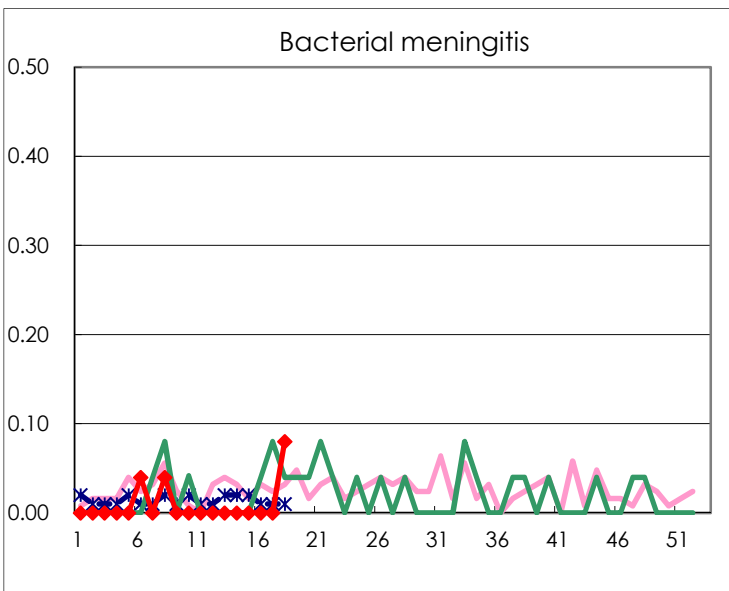
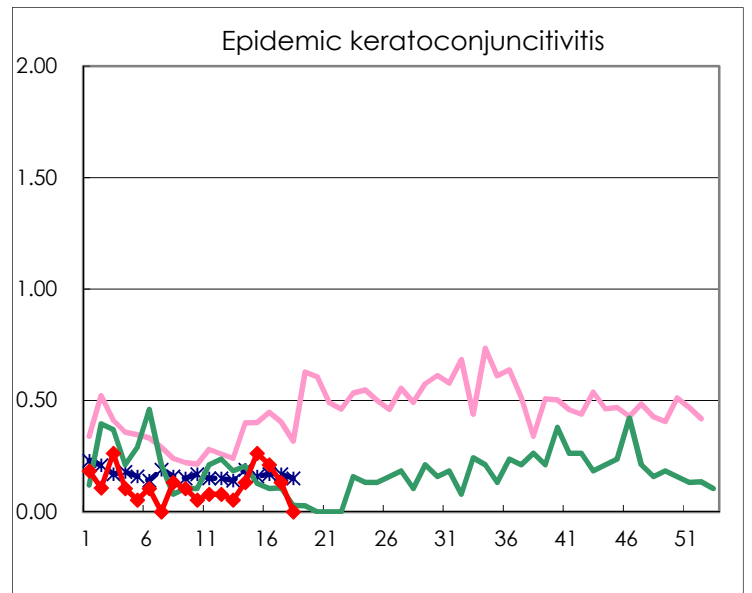
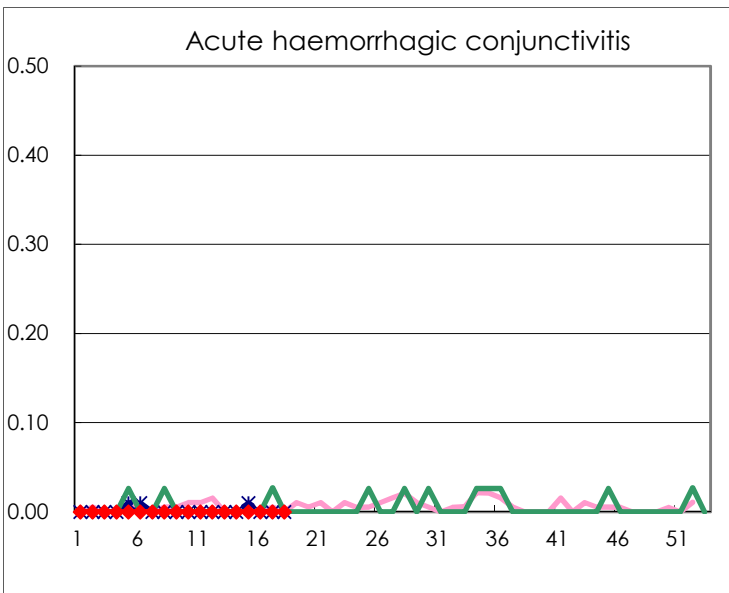
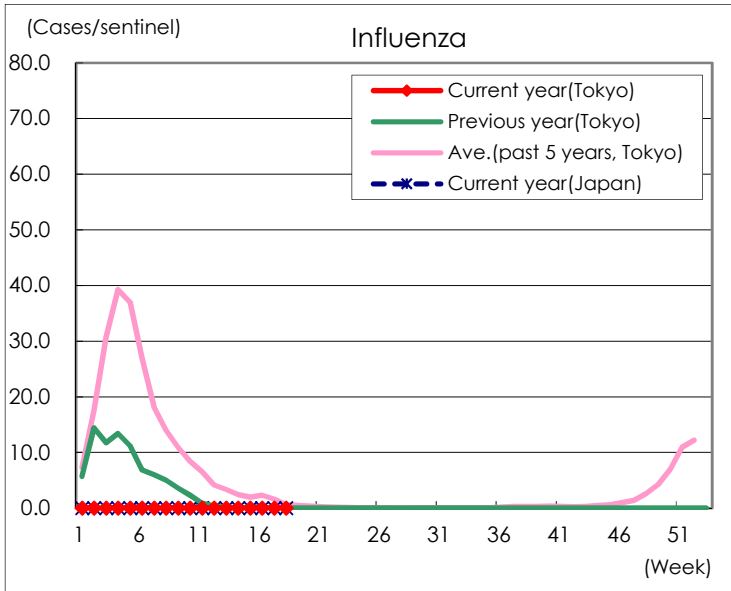
| Diseases  | Tokyo |       |       |      |           |
|---|-------|-------|-------|------|-----------|
|   | 15th  | 16th  | 17th  | 18th | /sentinel |
| Respiratory syncytial virus infection           | 76    | 62    | 81    | 58   | 0.22      |
| Pharyngoconjunctival fever                      | 15    | 24    | 27    | 22   | 0.09      |
| Group A streptococcal pharyngitis               | 83    | 88    | 91    | 52   | 0.20      |
| Infectious gastroenteritis                      | 851   | 1,044 | 1,032 | 537  | 2.08      |
| Chickenpox                                      | 13    | 20    | 37    | 27   | 0.10      |
| Hand, foot, and mouth disease                   |       | 3     | 6     | 5    | 0.02      |
| Erythema infectiosum                            | 3     | 6     | 4     | 6    | 0.02      |
| Exanthem subitum                                | 121   | 158   | 145   | 85   | 0.33      |
| Herpangina                                      | 2     | 2     | 3     | 3    | 0.01      |
| Mumps   | 13    | 16    | 13    | 11   | 0.04      |
| Kawasaki disease                                | 6     | 5     | 1     | 2    | 0.01      |
| Cold with exanthems                             | 5     | 6     | 10    | 6    | 0.02      |
| Influenza                                       |       |       |       |      |           |
| Acute hemorrhagic conjunctivitis                |       |       |       |      |           |
| Epidemic keratoconjunctivitis                   | 10    | 8     | 5     |      |           |
| Bacterial meningitis                            |       |       |       | 2    | 0.08      |
| Aseptic meningitis                              |       |       |       |      |           |
| <i>Mycoplasma pneumoniae</i>                    |       |       |       | 1    | 0.04      |
| Chlamydial pneumonia<br>(excluding psittacosis) |       | 1     |       | 1    | 0.04      |
| Infectious gastroenteritis (only by Rotavirus)  |       |       |       |      |           |
| Influenza-Associated Hospitalizations           |       |       |       |      |           |

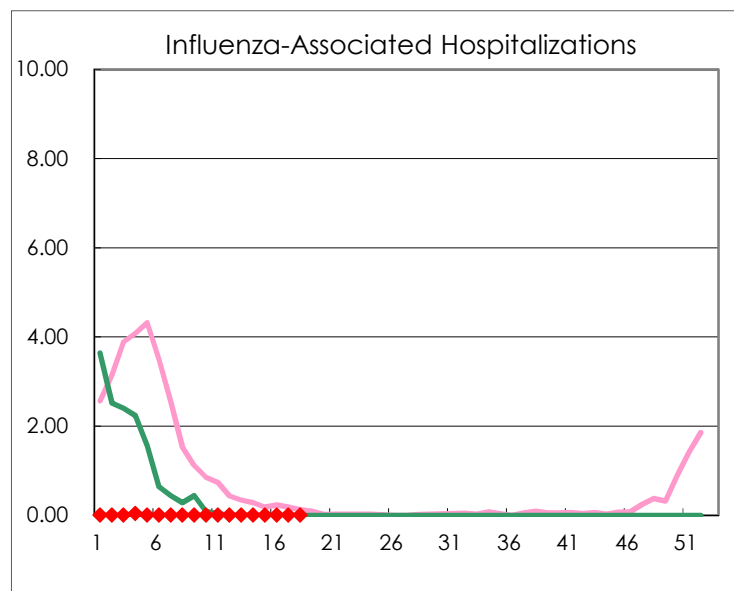
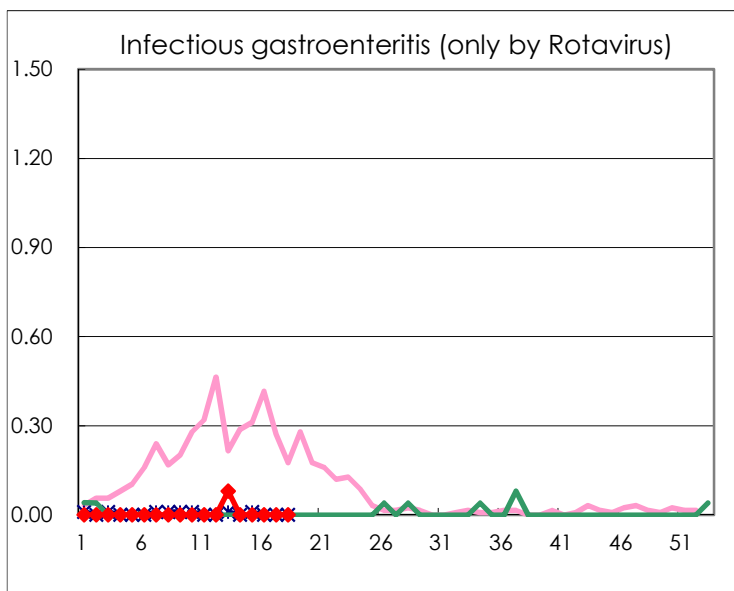
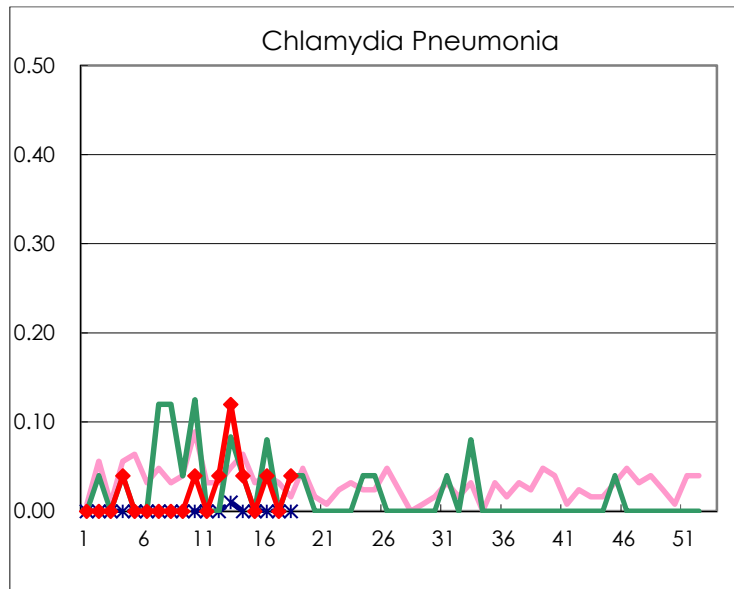
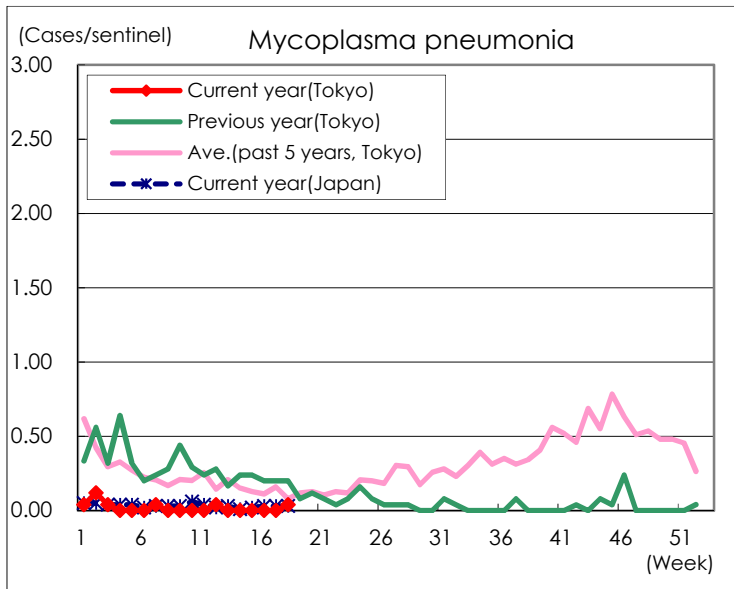
( Blank means 0. )

# Disease Trend Graph (weekly reported cases per sentinel in comparison)









| Number of sentinel facilities for weekly reporting |                     |                           |
|--|---------------------|---------------------------|
| Types of sentinels                                 | Number of sentinels | Sentinels having reported |
| Pediatric  | 264                 | 258                       |
| Influenza  | 419                 | 402                       |
| Ophthalmic   | 39                  | 37                        |
| Specially-designated                               | 25                  | 25                        |