

---

INFECTIOUS DISEASES WEEKLY REPORT

# TOKYO IDWR

Tokyo Metropolitan Infectious Disease Surveillance Center

**20 May 2021 / Number 19**  
**( 5/10 ~ 5/16 )**

## Surveillance System in Tokyo, Japan

The infectious diseases which all physicians must report  
All physicians must report to health centers the incidence of the diseases which are shown at page one. Health centers electronically report the individual cases to Tokyo Metropolitan Infectious Disease Surveillance Center.

The infectious diseases required to be reported by the sentinels  
The numbers of patients who visit the sentinel clinics or hospitals during a week are reported to health centers in Tokyo. And they electronically report the numbers to Tokyo Metropolitan Infectious Disease Surveillance Center. We have about 500 sentinel clinics and hospitals in Tokyo.

Tokyo Metropolitan Institute of Public Health

TEL:81-3-3363-3213 FAX:81-3-5332-7365

e-mail:[www@tokyo-eiken.go.jp](mailto:www@tokyo-eiken.go.jp)

URL:[idsc.tokyo-eiken.go.jp/](http://idsc.tokyo-eiken.go.jp/)

---

Number of patients with the diseases which all physicians must report

Category	Diseases	Tokyo					Japan	
		16th	17th	18th	19th	Cum 2021	19th	Cum 2021
I	Ebola hemorrhagic fever							
	Crimean-Congo hemorrhagic fever							
	Smallpox							
	South American hemorrhagic fever							
	Plague							
	Marburg disease							
	Lassa fever							
II	Acute poliomyelitis							
	Tuberculosis	47	43	27	29	772	201	5,409
	Diphtheria							
	Severe Acute Respiratory Syndrome(SARS)							
	Middle East Respiratory Syndrome (MERS)							
	Avian influenza H5N1							
	Avian influenza H7N9							
III	Cholera							
	Shigellosis					2		4
	Enterohemorrhagic Escherichia coli infection	4	2	2	2	37	23	367
	Typhoid fever							
	Paratyphoid fever							
IV	Hepatitis E	2	4	1	4	58	10	212
	West Nile fever							
	Hepatitis A					8	2	27
	Echinococcosis						1	12
	Yellow fever							
	Psittacosis							3
	Omsk hemorrhagic fever							
	Relapsing fever							2
	Kyasanur forest disease							
	Q fever							
	Rabies							
	Coccidioidomycosis							
	Monkeypox							
	Zika virus infection							
	Severe Fever with Thrombocytopenia Syndrome						1	30
	Hemorrhagic fever with renal syndrome							
	Western equine encephalitis							
	Tick-borne encephalitis							
	Anthrax							
	Chikungunya fever							
	Scrub typhus(Tsutsugamushi disease)	1				2	6	89
	Dengue fever							
	Eastern equine encephalitis							
	Avian influenza (excluding H5N1 and H7N9)							
	Nipah virus infection							
	Japanese spotted fever					1	9	58
	Japanese encephalitis							
	Hantavirus pulmonary syndrome							
	Herpes B virus infection							
	Glanders							
	Brucellosis							
	Venezuelan equine encephalitis							
	Hendra virus infection							
	Epidemic typhus							
Botulism							1	
Malaria							4	
Tularemia								
Lyme disease							5	
Lyssavirus infection(excluding rabies)								
Rift valley fever								
Melioidosis								
Legionellosis		1			31	17	380	
Leptospirosis					1		2	
Rocky mountain spotted fever								

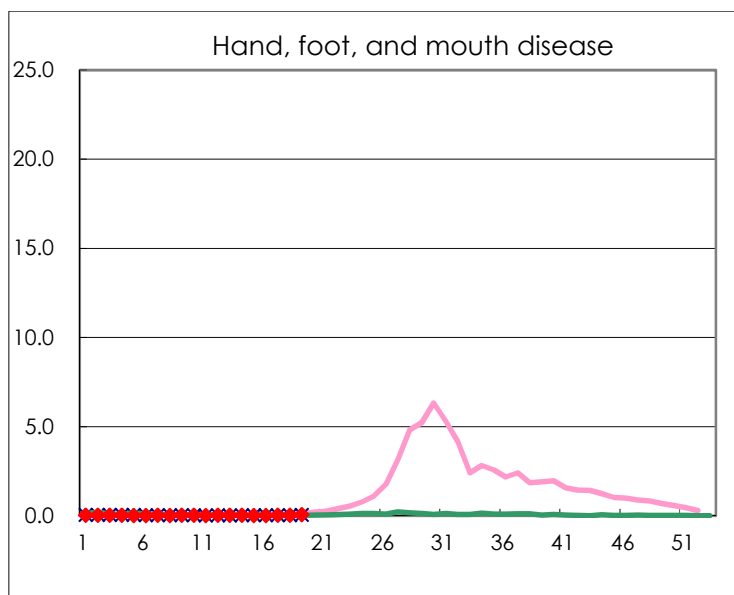
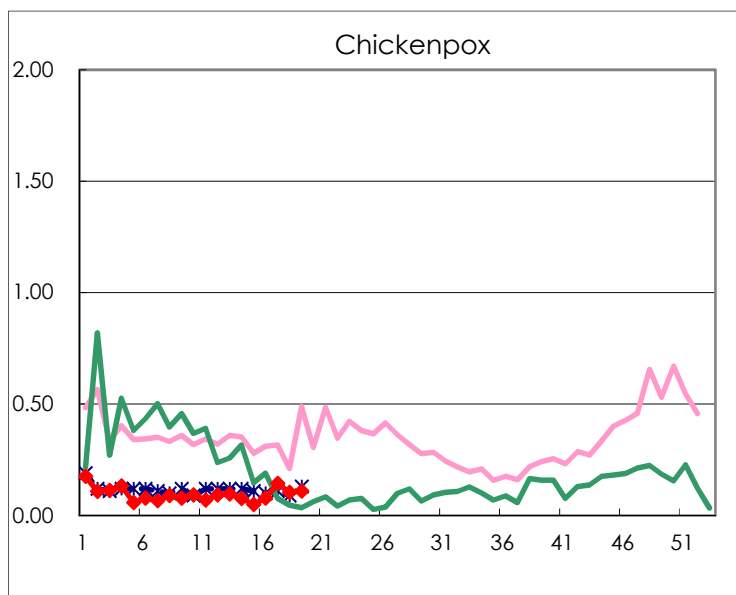
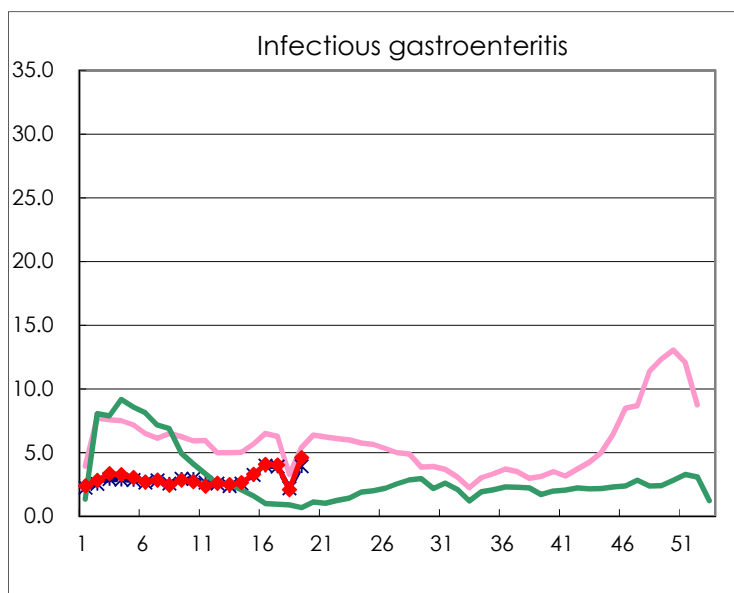
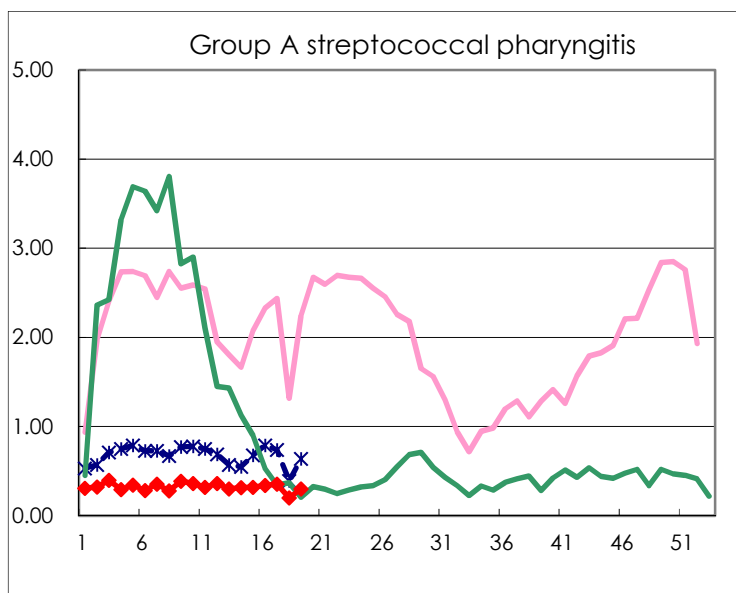
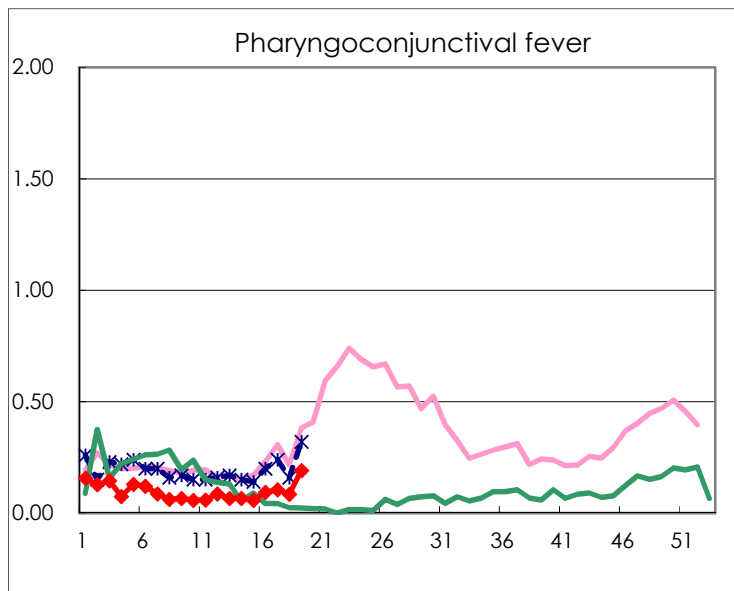
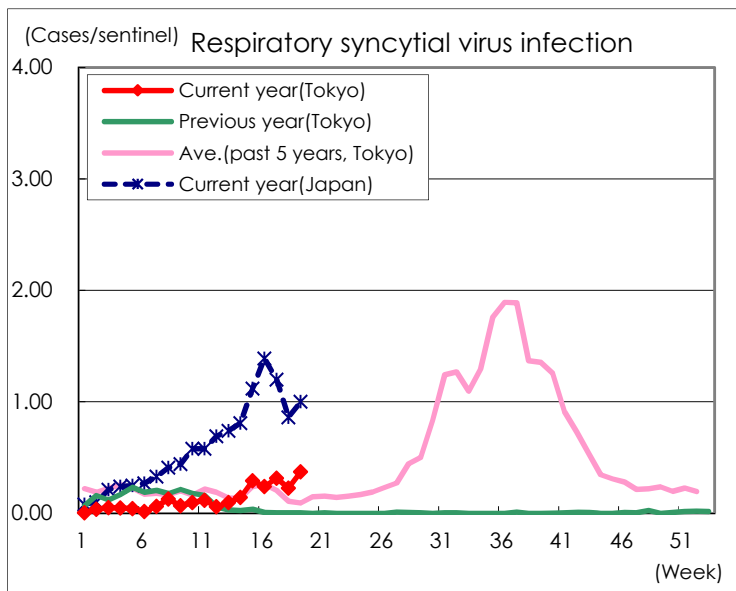
Category	Diseases	Tokyo					Japan	
		16th	17th	18th	19th	Cum 2021	19th	Cum 2021
V	Amebiasis	4		1	2	29	6	182
	Viral hepatitis(excluding hepatitis A and E)		2		1	23	1	72
	CRE infection	4	2	2	5	66	18	593
	Acute Flaccid Paralysis (excluding Acute poliomyelitis)					1		6
	Acute encephalitis(excluding JE and WNE)					7	4	111
	Cryptosporidiosis						1	2
	Creutzfeldt-Jakob disease			1		7	1	62
	Severe invasive streptococcal infections(TSLS)		3	1	1	25	6	238
	Acquired immunodeficiency syndrome (AIDS)	9	6	1	5	128	9	339
	Giardiasis				1	5	2	14
	Invasive <i>Haemophilus influenzae</i> disease	1			1	8	1	78
	Invasive meningococcal disease							
	Invasive pneumococcal disease	2	5	7	3	44	25	508
	Varicella (limited to hospitalized case)		1			12	5	102
	Congenital rubella syndrome							1
	Syphilis	36	43	32	53	758	81	2,200
	Disseminated cryptococcosis			1		4	2	46
	Tetanus					1	2	26
	Vancomycin-resistant <i>S. aureus</i> infection							
	Vancomycin-resistant <i>Enterococcus</i> infection	1				1	3	39
	Pertussis	1	2		2	30	8	215
Rubella					1		6	
Measles						1	1	
MDRA infection								

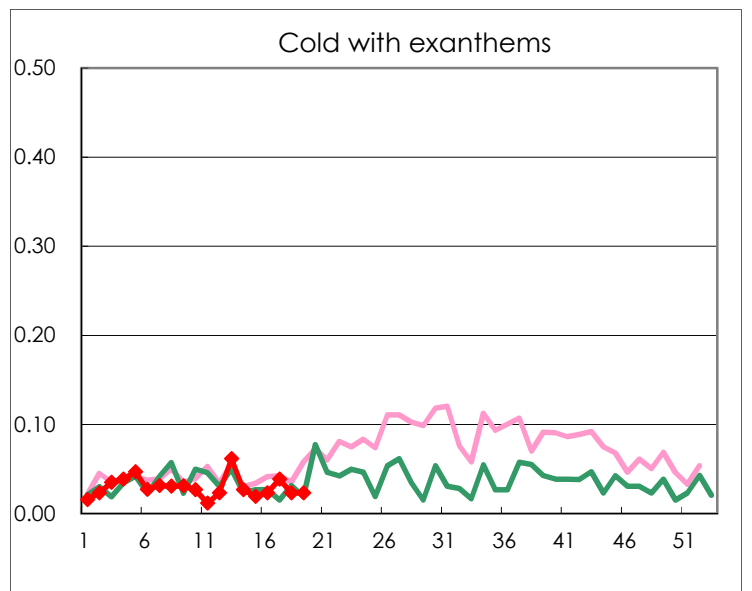
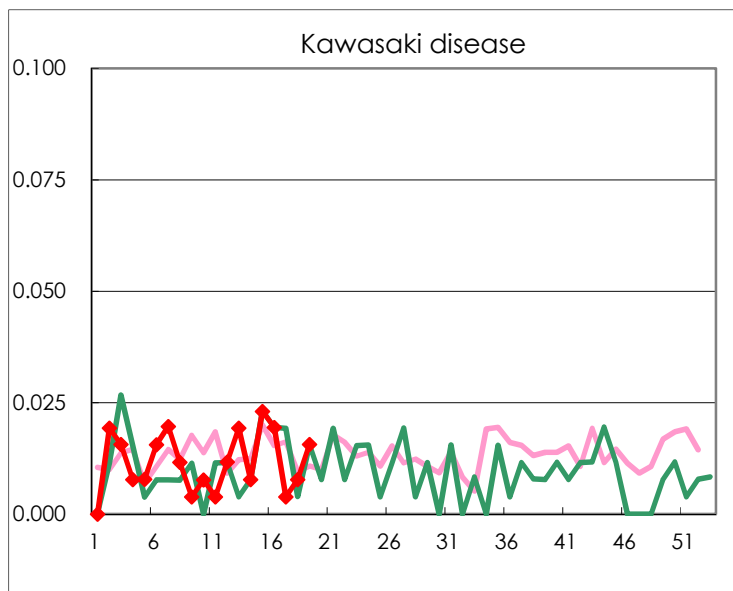
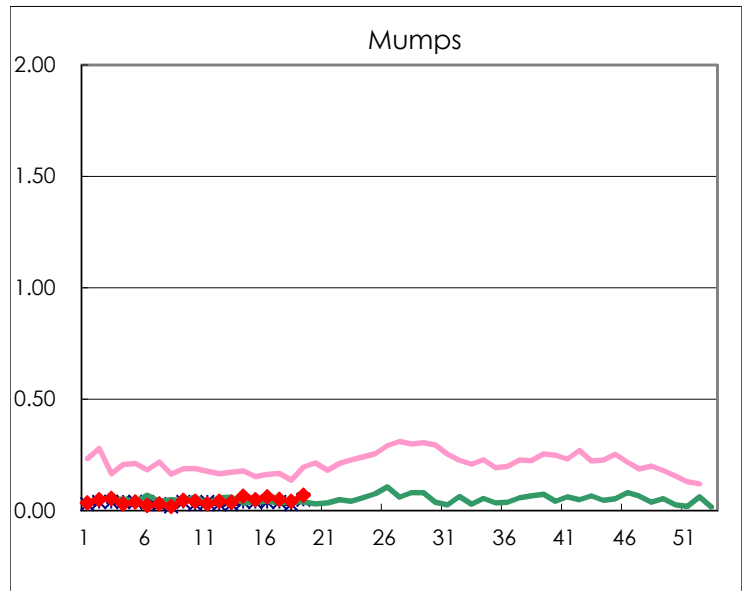
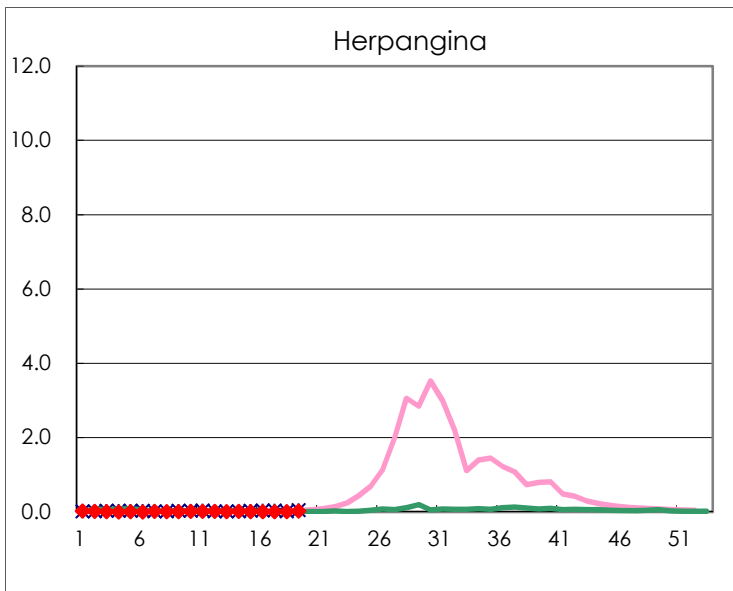
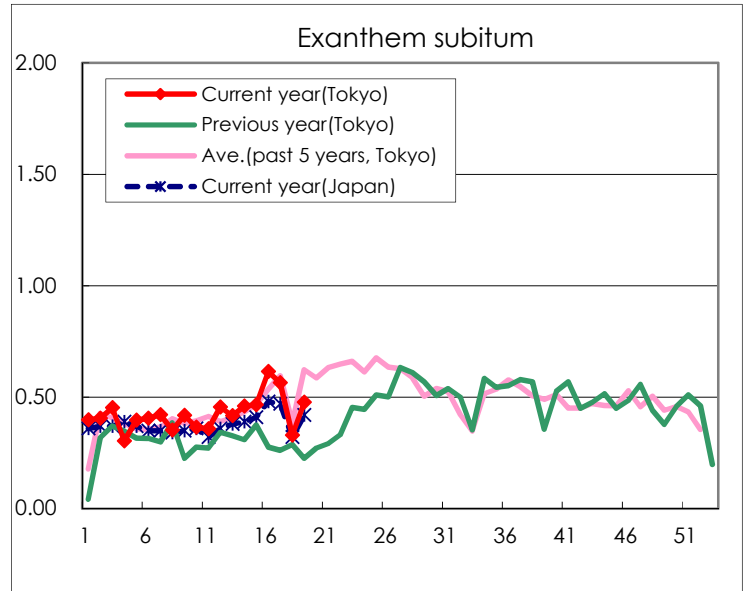
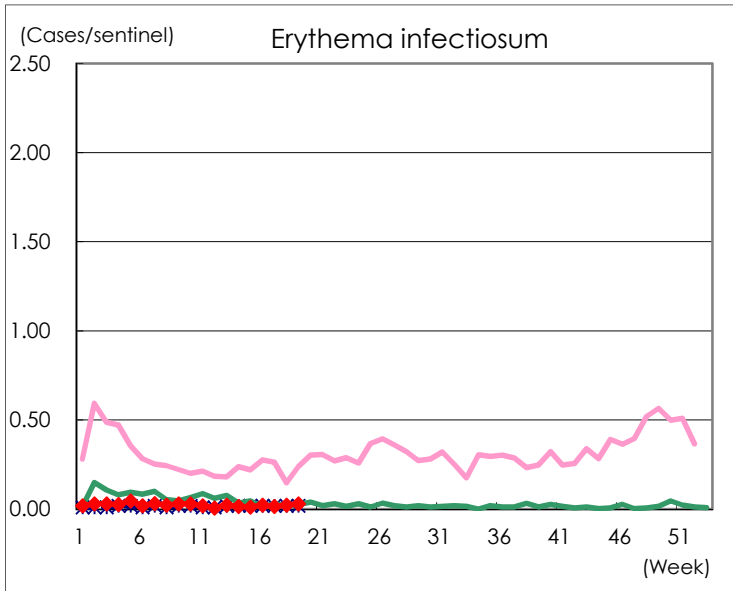
Number of patients with the diseases to be reported  
by the designated clinics and hospitals

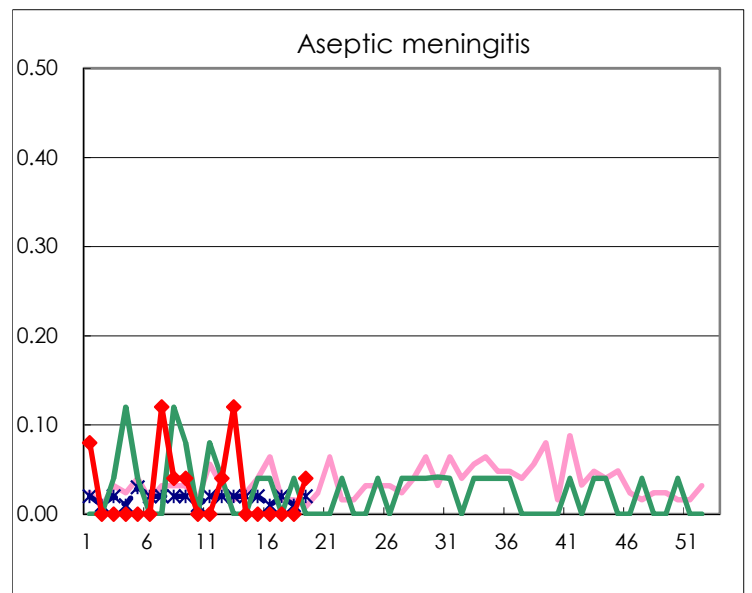
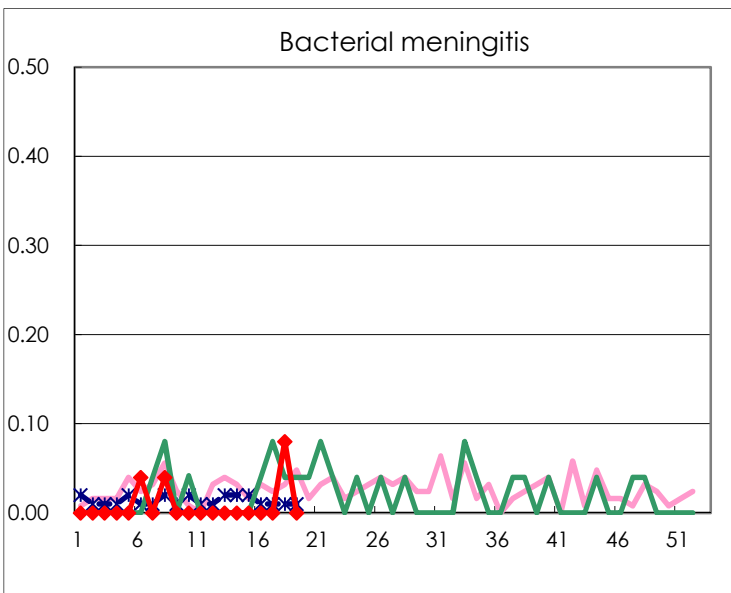
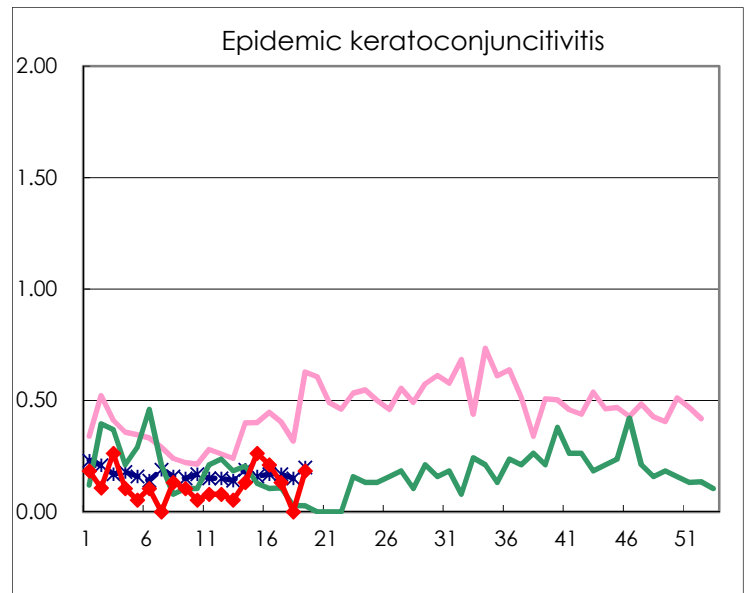
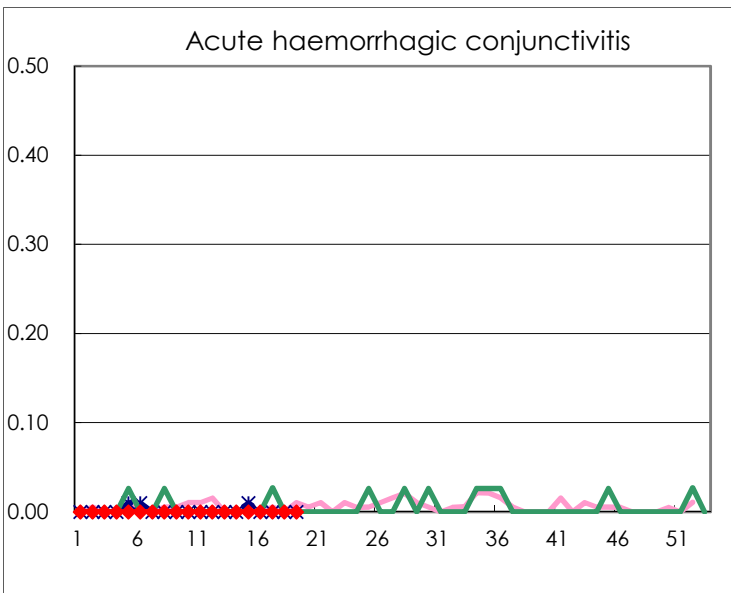
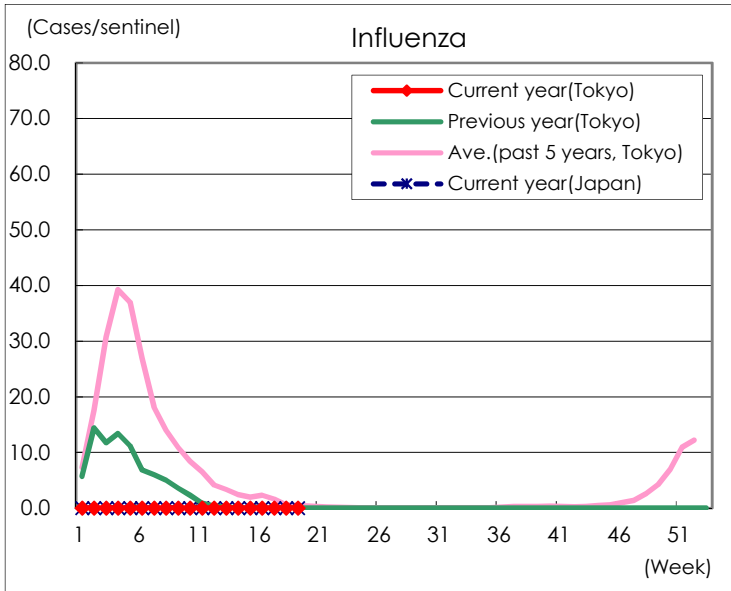
Diseases	Tokyo				
	16th	17th	18th	19th	/sentinel
Respiratory syncytial virus infection	62	81	58	95	0.37
Pharyngoconjunctival fever	24	27	22	49	0.19
Group A streptococcal pharyngitis	88	91	52	77	0.30
Infectious gastroenteritis	1,044	1,032	537	1,176	4.59
Chickenpox	20	37	27	28	0.11
Hand, foot, and mouth disease	3	6	5	16	0.06
Erythema infectiosum	6	4	6	8	0.03
Exanthem subitum	158	145	85	122	0.48
Herpangina	2	3	3	6	0.02
Mumps	16	13	11	18	0.07
Kawasaki disease	5	1	2	4	0.02
Cold with exanthems	6	10	6	6	0.02
Influenza					
Acute hemorrhagic conjunctivitis					
Epidemic keratoconjunctivitis	8	5		7	0.18
Bacterial meningitis			2		
Aseptic meningitis				1	0.04
Mycoplasma pneumonia			1		
Chlamydial pneumonia (excluding psittacosis)	1		1		
Infectious gastroenteritis (only by Rotavirus)					
Influenza-Associated Hospitalizations					

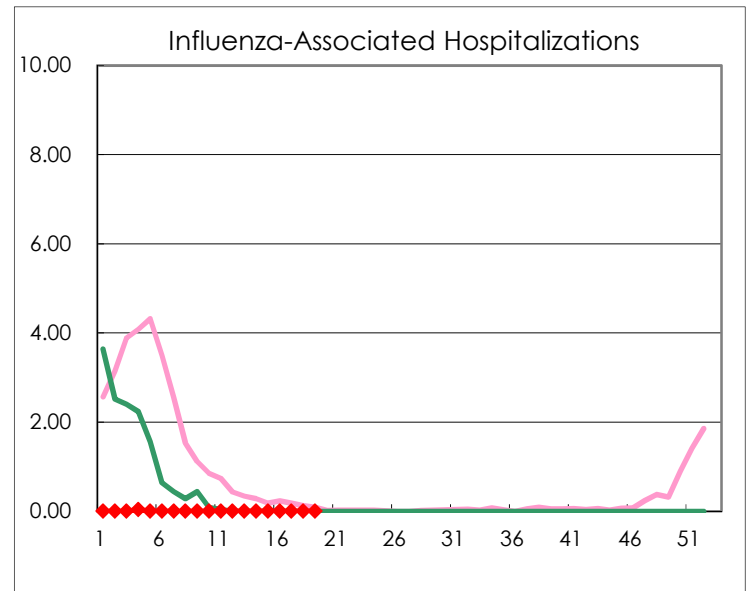
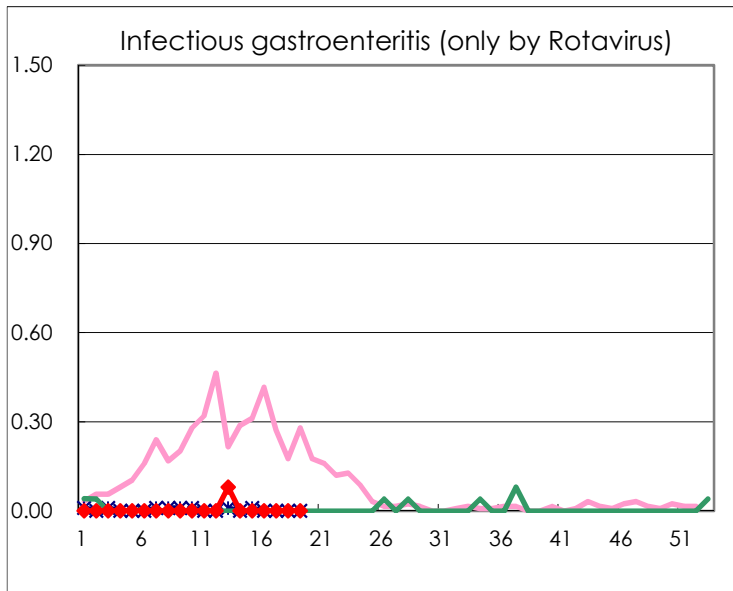
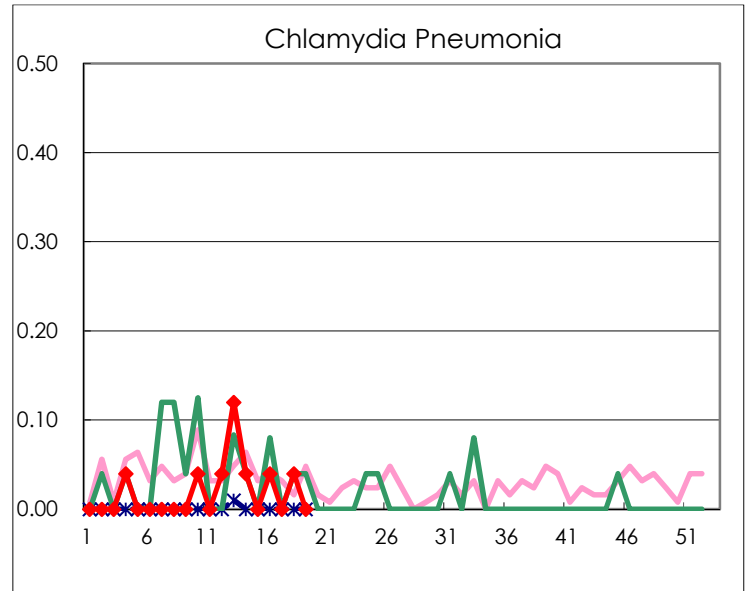
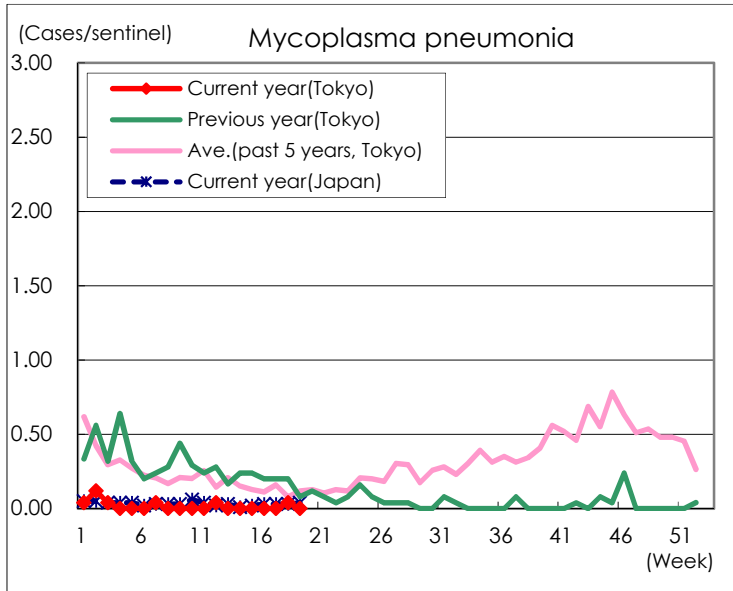
( Blank means 0. )

# Disease Trend Graph (weekly reported cases per sentinel in comparison)









Number of sentinel facilities for weekly reporting		
Types of sentinels	Number of sentinels	Sentinels having reported
Pediatric	264	256
Influenza	419	401
Ophthalmic	39	38
Specially-designated	25	25