

---

INFECTIOUS DISEASES WEEKLY REPORT

# TOKYO IDWR

Tokyo Metropolitan Infectious Disease Surveillance Center

**3 June 2021 / Number 21**  
**( 5/24 ~ 5/30 )**

## Surveillance System in Tokyo, Japan

The infectious diseases which all physicians must report  
All physicians must report to health centers the incidence of the diseases which are shown at page one. Health centers electronically report the individual cases to Tokyo Metropolitan Infectious Disease Surveillance Center.

The infectious diseases required to be reported by the sentinels  
The numbers of patients who visit the sentinel clinics or hospitals during a week are reported to health centers in Tokyo. And they electronically report the numbers to Tokyo Metropolitan Infectious Disease Surveillance Center. We have about 500 sentinel clinics and hospitals in Tokyo.

Tokyo Metropolitan Institute of Public Health

TEL:81-3-3363-3213 FAX:81-3-5332-7365

e-mail:[www@tokyo-eiken.go.jp](mailto:www@tokyo-eiken.go.jp)

URL:[idsc.tokyo-eiken.go.jp/](http://idsc.tokyo-eiken.go.jp/)

---

Number of patients with the diseases which all physicians must report

Category	Diseases	Tokyo					Japan	
		18th	19th	20th	21st	Cum 2021	21st	Cum 2021
I	Ebola hemorrhagic fever							
	Crimean-Congo hemorrhagic fever							
	Smallpox							
	South American hemorrhagic fever							
	Plague							
	Marburg disease							
	Lassa fever							
II	Acute poliomyelitis							
	Tuberculosis	26	32	63	45	883	268	6,125
	Diphtheria							
	Severe Acute Respiratory Syndrome(SARS)							
	Middle East Respiratory Syndrome (MERS)							
	Avian influenza H5N1							
	Avian influenza H7N9							
III	Cholera							
	Shigellosis					2		4
	Enterohemorrhagic Escherichia coli infection	2	2	8	8	53	49	483
	Typhoid fever							
	Paratyphoid fever							
IV	Hepatitis E	1	4	4	1	63	1	226
	West Nile fever							
	Hepatitis A			1		9		33
	Echinococcosis							13
	Yellow fever							
	Psittacosis							3
	Omsk hemorrhagic fever							
	Relapsing fever							2
	Kyasanur forest disease							
	Q fever							
	Rabies							
	Coccidioidomycosis							
	Monkeypox							
	Zika virus infection							
	Severe Fever with Thrombocytopenia Syndrome						3	37
	Hemorrhagic fever with renal syndrome							
	Western equine encephalitis							
	Tick-borne encephalitis							
	Anthrax							
	Chikungunya fever							
	Scrub typhus(Tsutsugamushi disease)					2	5	103
	Dengue fever							
	Eastern equine encephalitis							
	Avian influenza (excluding H5N1 and H7N9)							
	Nipah virus infection							
	Japanese spotted fever					1	7	81
	Japanese encephalitis							
	Hantavirus pulmonary syndrome							
	Herpes B virus infection							
	Glanders							
	Brucellosis							
	Venezuelan equine encephalitis							
	Hendra virus infection							
	Epidemic typhus							
	Botulism							1
	Malaria				1	1	1	5
	Tularemia							
	Lyme disease							5
	Lyssavirus infection(excluding rabies)							
	Rift valley fever							
	Melioidosis							
Legionellosis			2	2	35	42	452	
Leptospirosis					1		2	
Rocky mountain spotted fever								

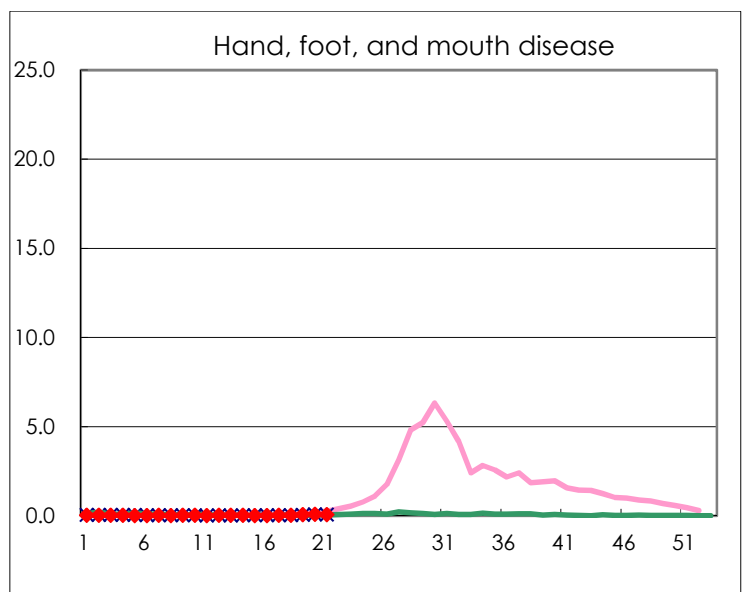
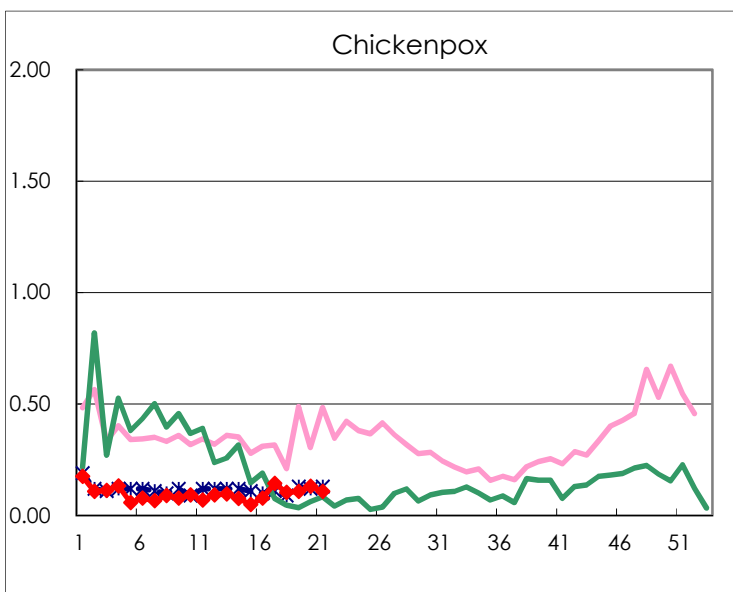
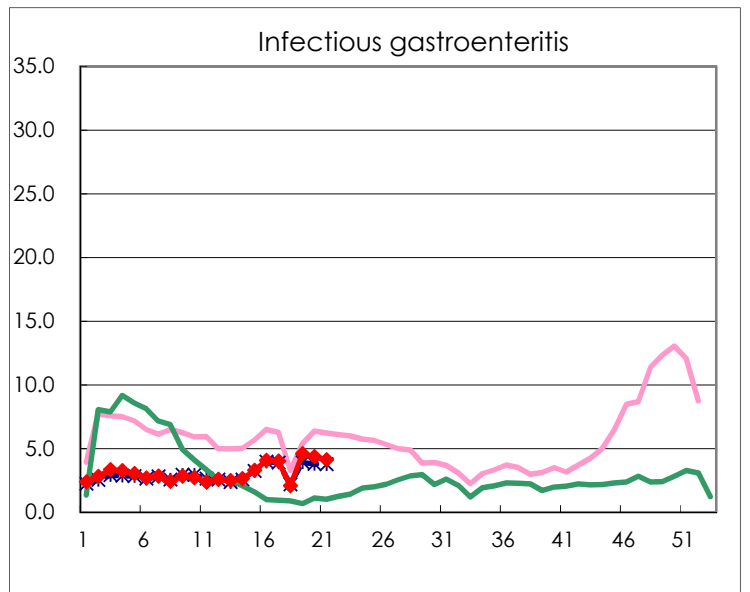
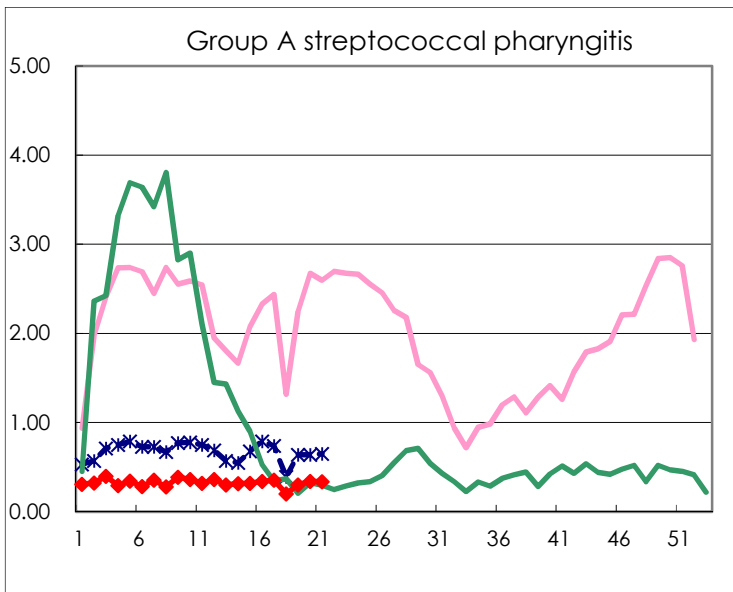
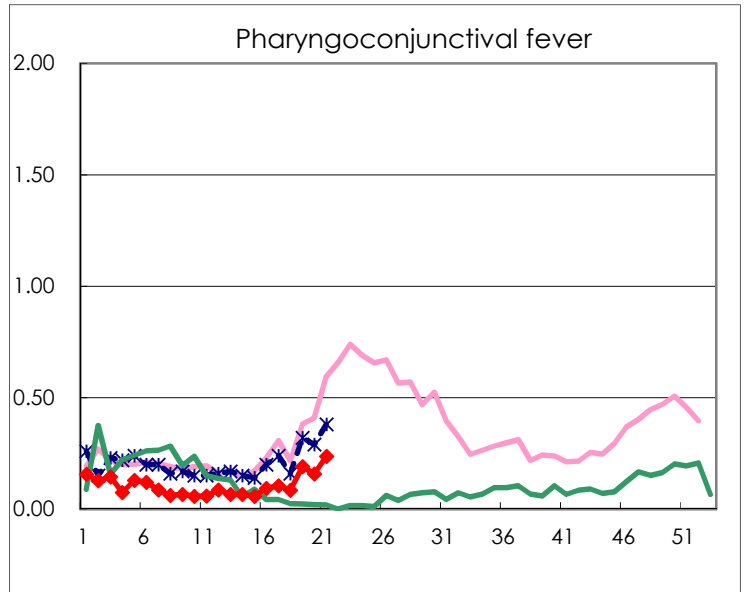
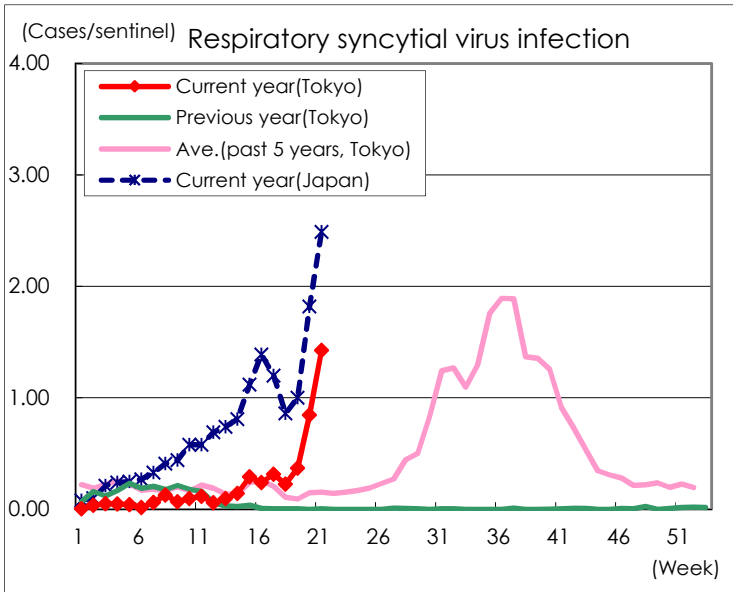
Category	Diseases	Tokyo					Japan	
		18th	19th	20th	21st	Cum 2021	21st	Cum 2021
V	Amebiasis	1	3	1	2	34	6	205
	Viral hepatitis(excluding hepatitis A and E)		2	1		25	3	80
	CRE infection	3	6	3	3	74	25	675
	Acute Flaccid Paralysis (excluding Acute poliomyelitis)			1		2		7
	Acute encephalitis(excluding JE and WNE)					7	4	129
	Cryptosporidiosis							2
	Creutzfeldt-Jakob disease	1				7	1	67
	Severe invasive streptococcal infections(TSLS)	1	1	2	1	28	9	259
	Acquired immunodeficiency syndrome (AIDS)	1	5	12	7	147	11	385
	Giardiasis		1			5		16
	Invasive <i>Haemophilus influenzae</i> disease		1	1		9	1	88
	Invasive meningococcal disease							
	Invasive pneumococcal disease	7	4	1	4	50	18	587
	Varicella (limited to hospitalized case)					12	3	108
	Congenital rubella syndrome							1
	Syphilis	34	55	43	43	849	60	2,498
	Disseminated cryptococcosis	1		2		6	3	56
	Tetanus					1	2	31
	Vancomycin-resistant <i>S. aureus</i> infection							
	Vancomycin-resistant <i>Enterococcus</i> infection					1		42
	Pertussis		2	1		31	8	243
	Rubella					1		7
	Measles						1	2
MDRA infection								

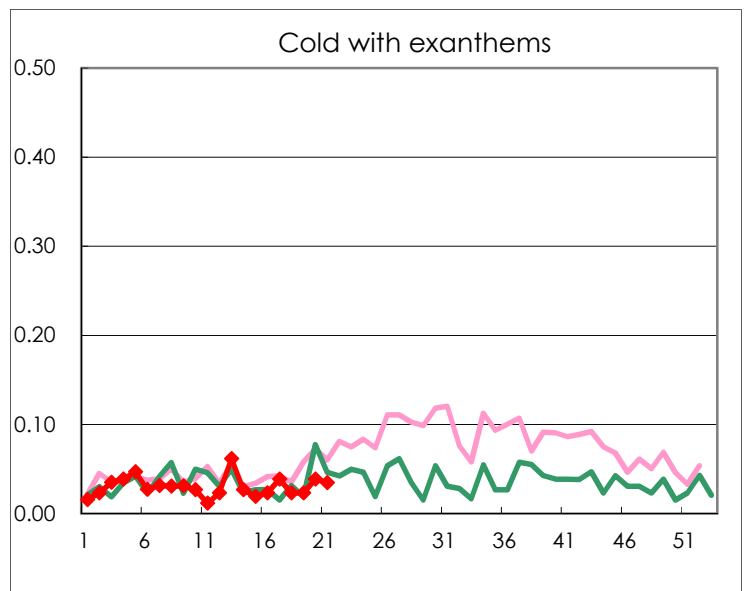
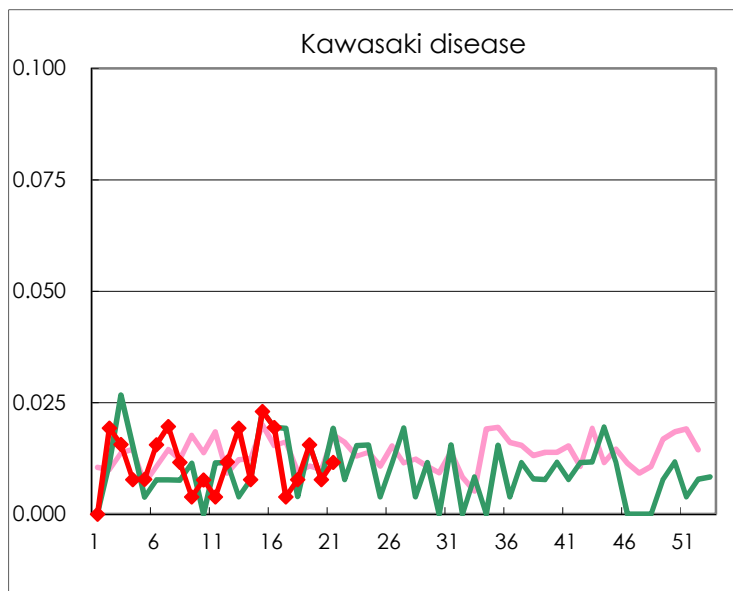
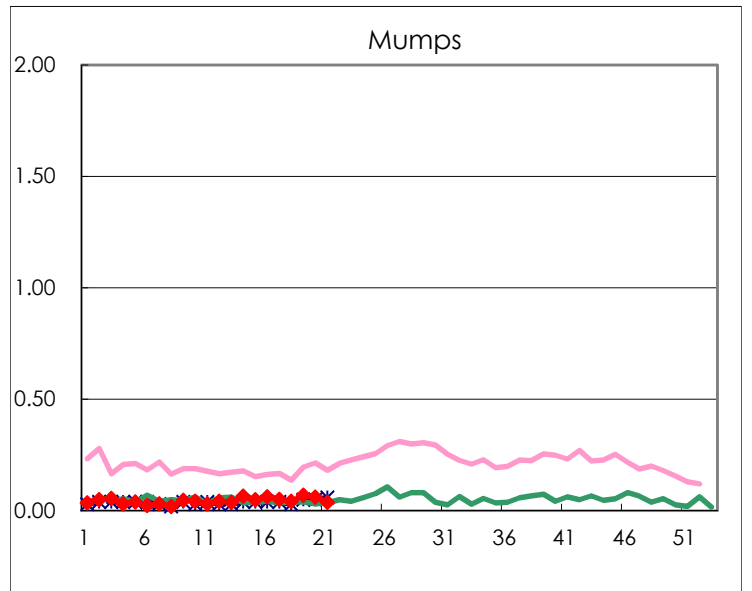
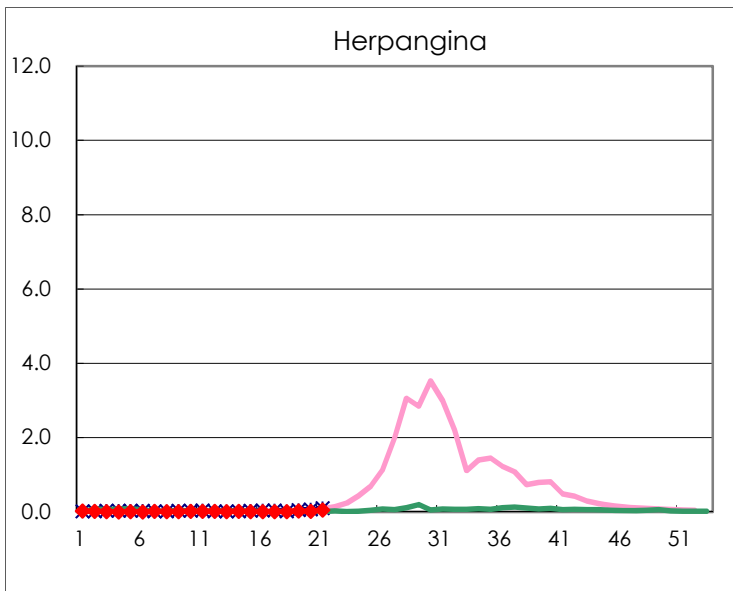
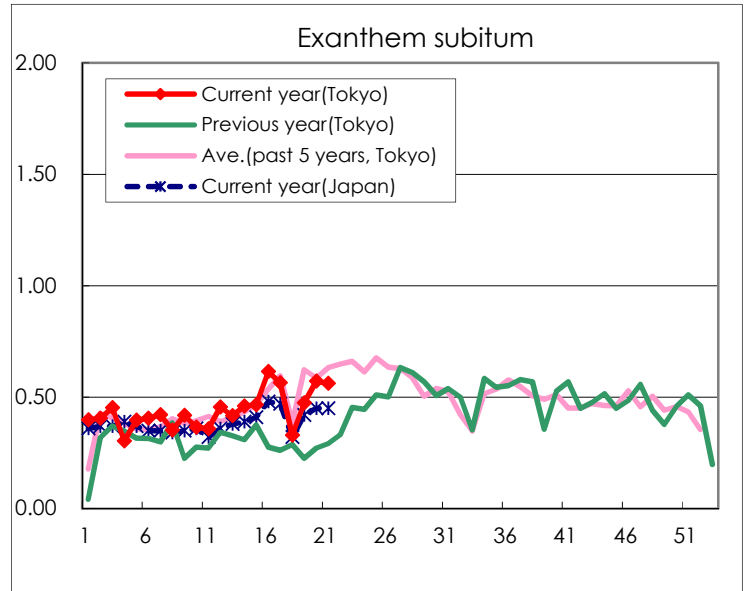
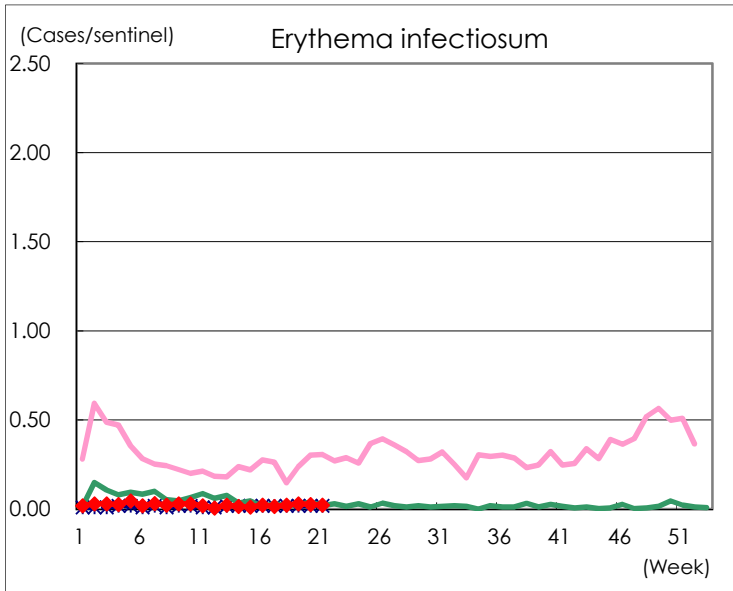
Number of patients with the diseases to be reported  
by the designated clinics and hospitals

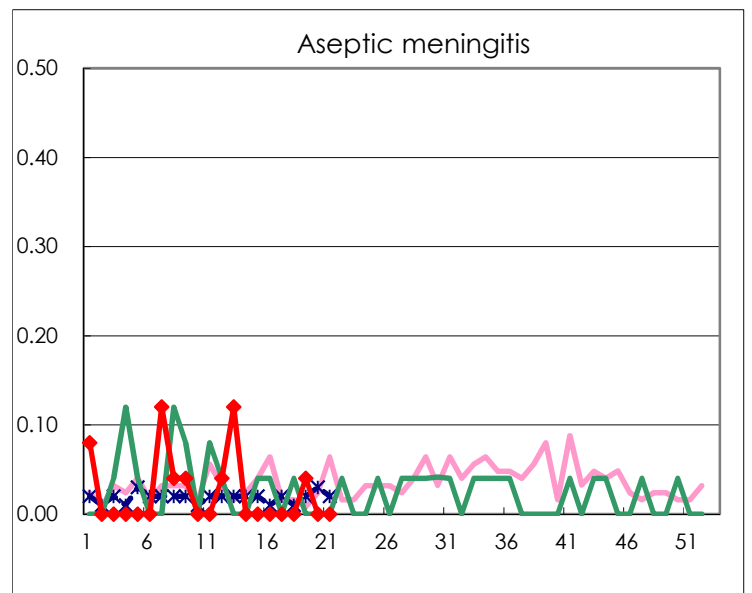
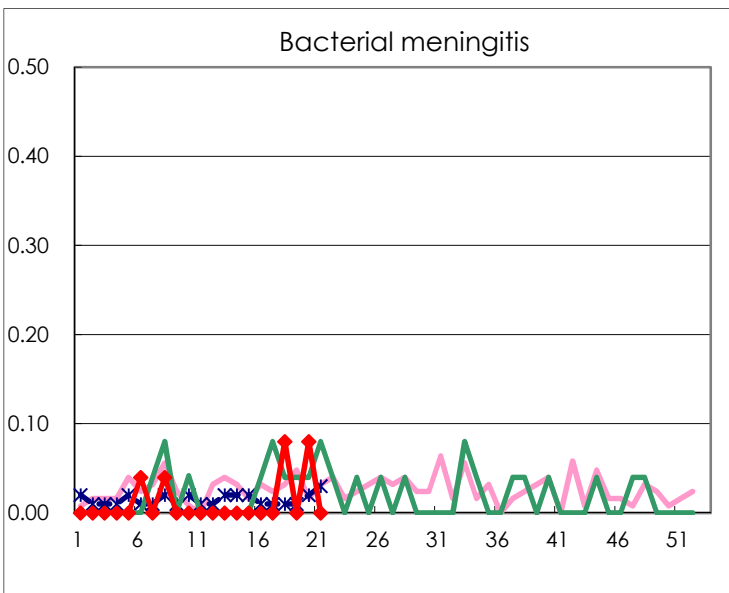
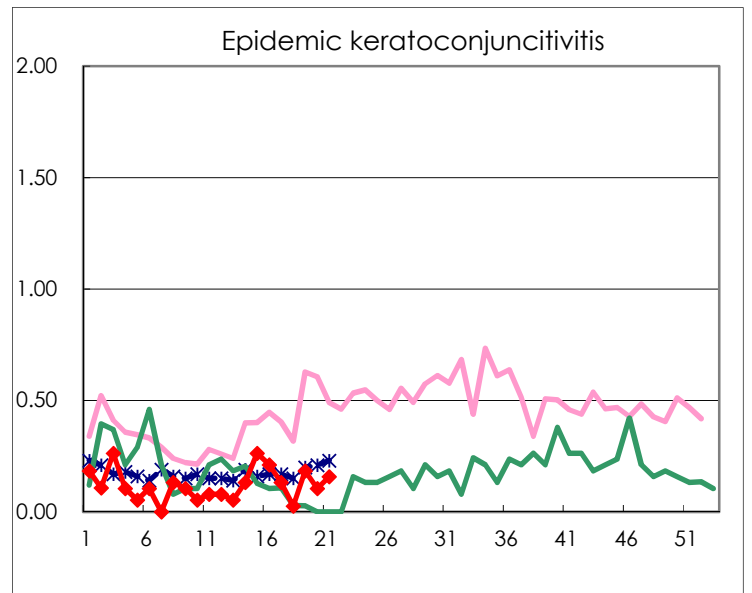
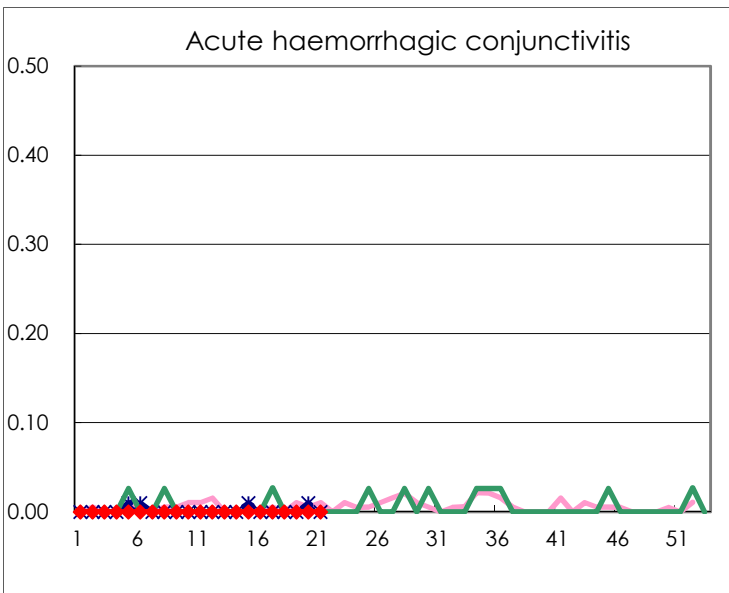
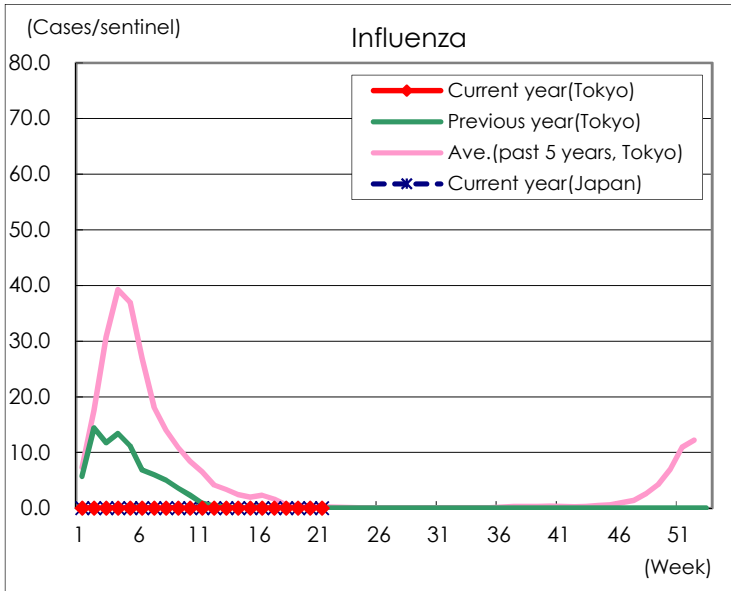
Diseases	Tokyo				
	18th	19th	20th	21st	/sentinel
Respiratory syncytial virus infection	58	95	219	368	1.43
Pharyngoconjunctival fever	22	49	41	61	0.24
Group A streptococcal pharyngitis	52	77	88	87	0.34
Infectious gastroenteritis	537	1,176	1,128	1,058	4.10
Chickenpox	27	28	34	28	0.11
Hand, foot, and mouth disease	5	16	20	16	0.06
Erythema infectiosum	6	8	7	6	0.02
Exanthem subitum	85	122	148	145	0.56
Herpangina	3	6	5	13	0.05
Mumps	11	18	16	10	0.04
Kawasaki disease	2	4	2	3	0.01
Cold with exanthems	6	6	10	9	0.03
Influenza			1		
Acute hemorrhagic conjunctivitis					
Epidemic keratoconjunctivitis	1	7	4	6	0.16
Bacterial meningitis	2		2		
Aseptic meningitis		1			
<i>Mycoplasma pneumoniae</i>	1				
Chlamydial pneumonia (excluding psittacosis)	1			2	0.08
Infectious gastroenteritis (only by Rotavirus)					
Influenza-Associated Hospitalizations					

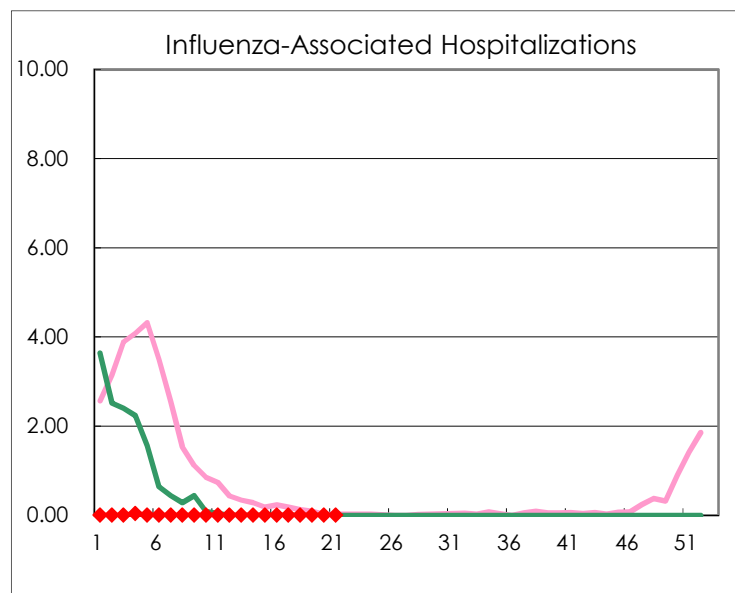
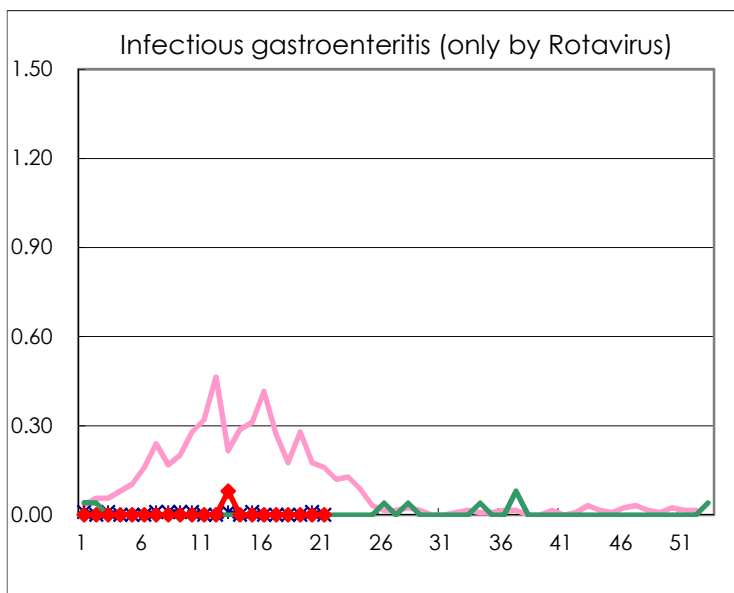
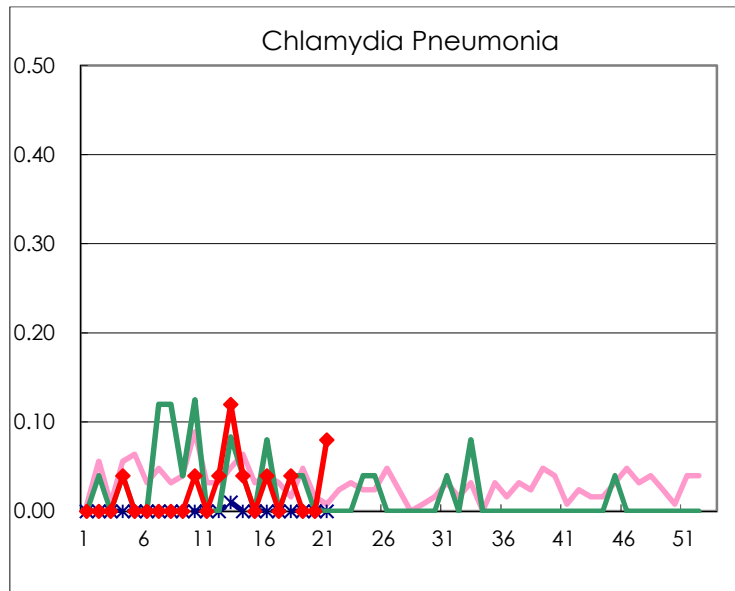
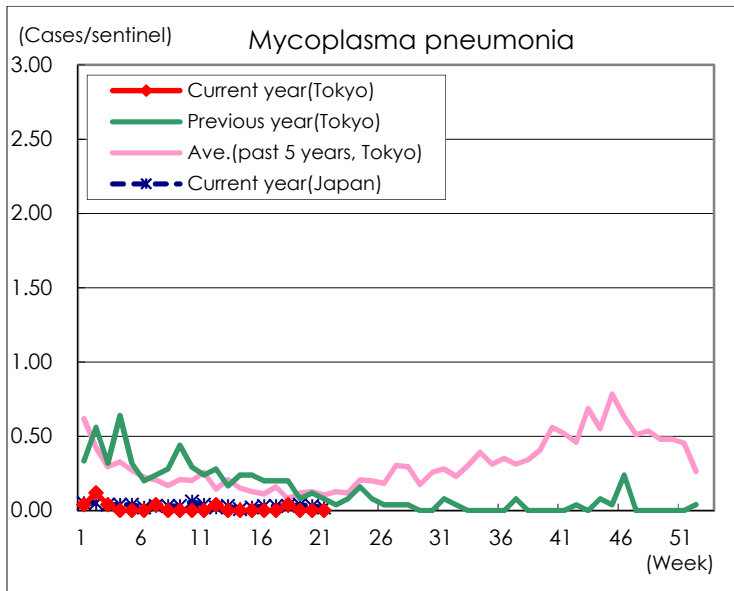
( Blank means 0. )

# Disease Trend Graph (weekly reported cases per sentinel in comparison)









Number of sentinel facilities for weekly reporting		
Types of sentinels	Number of sentinels	Sentinels having reported
Pediatric	264	258
Influenza	419	406
Ophthalmic	39	38
Specially-designated	25	25