
INFECTIOUS DISEASES WEEKLY REPORT

TOKYO IDWR

Tokyo Metropolitan Infectious Disease Surveillance Center

10 June 2021 / Number 22

(5/31 ~ 6/6)

Surveillance System in Tokyo, Japan

The infectious diseases which all physicians must report
All physicians must report to health centers the incidence of the diseases which are shown at page one. Health centers electronically report the individual cases to Tokyo Metropolitan Infectious Disease Surveillance Center.

The infectious diseases required to be reported by the sentinels
The numbers of patients who visit the sentinel clinics or hospitals during a week are reported to health centers in Tokyo. And they electronically report the numbers to Tokyo Metropolitan Infectious Disease Surveillance Center. We have about 500 sentinel clinics and hospitals in Tokyo.

Tokyo Metropolitan Institute of Public Health

TEL:81-3-3363-3213 FAX:81-3-5332-7365

e-mail:www@tokyo-eiken.go.jp

URL:idsc.tokyo-eiken.go.jp/

Number of patients with the diseases which all physicians must report

Category	Diseases	Tokyo					Japan	
		19th	20th	21st	22nd	Cum 2021	22nd	Cum 2021
I	Ebola hemorrhagic fever							
	Crimean-Congo hemorrhagic fever							
	Smallpox							
	South American hemorrhagic fever							
	Plague							
	Marburg disease							
	Lassa fever							
II	Acute poliomyelitis							
	Tuberculosis	32	63	47	48	933	225	6,403
	Diphtheria							
	Severe Acute Respiratory Syndrome(SARS)							
	Middle East Respiratory Syndrome (MERS)							
	Avian influenza H5N1							
	Avian influenza H7N9							
III	Cholera							
	Shigellosis					2		4
	Enterohemorrhagic Escherichia coli infection	2	8	8	5	58	44	534
	Typhoid fever							
	Paratyphoid fever							
IV	Hepatitis E	4	4	2		64	6	235
	West Nile fever							
	Hepatitis A		1			9	1	35
	Echinococcosis			1		1		14
	Yellow fever							
	Psittacosis							3
	Omsk hemorrhagic fever							
	Relapsing fever							2
	Kyasanur forest disease							
	Q fever							
	Rabies							
	Coccidioidomycosis							
	Monkeypox							
	Zika virus infection							
	Severe Fever with Thrombocytopenia Syndrome						3	40
	Hemorrhagic fever with renal syndrome							
	Western equine encephalitis							
	Tick-borne encephalitis							
	Anthrax							
	Chikungunya fever							
	Scrub typhus(Tsutsugamushi disease)					2	3	108
	Dengue fever							
	Eastern equine encephalitis							
	Avian influenza (excluding H5N1 and H7N9)							
	Nipah virus infection							
	Japanese spotted fever					1	8	89
	Japanese encephalitis							
	Hantavirus pulmonary syndrome							
	Herpes B virus infection							
	Glanders							
	Brucellosis							
	Venezuelan equine encephalitis							
	Hendra virus infection							
	Epidemic typhus							
	Botulism							1
Malaria			1		1		5	
Tularemia								
Lyme disease							5	
Lyssavirus infection(excluding rabies)								
Rift valley fever								
Melioidosis								
Legionellosis	1	2	3	1	38	57	517	
Leptospirosis					1		2	
Rocky mountain spotted fever								

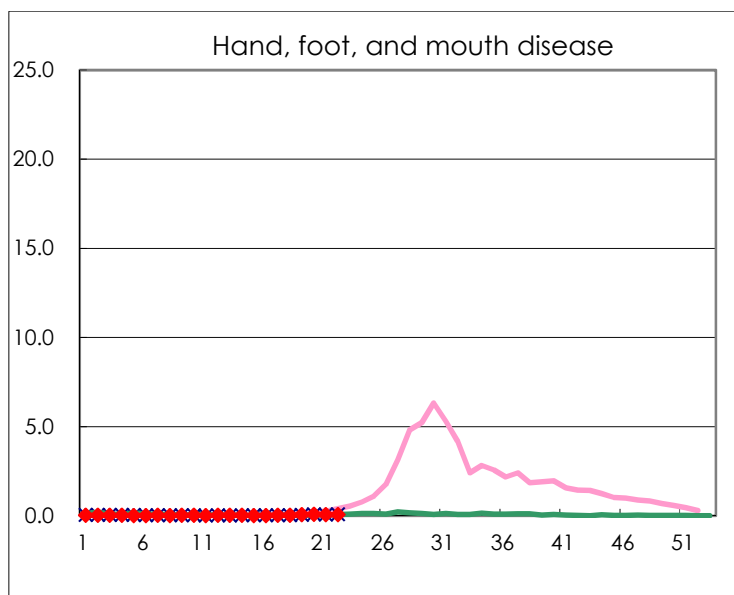
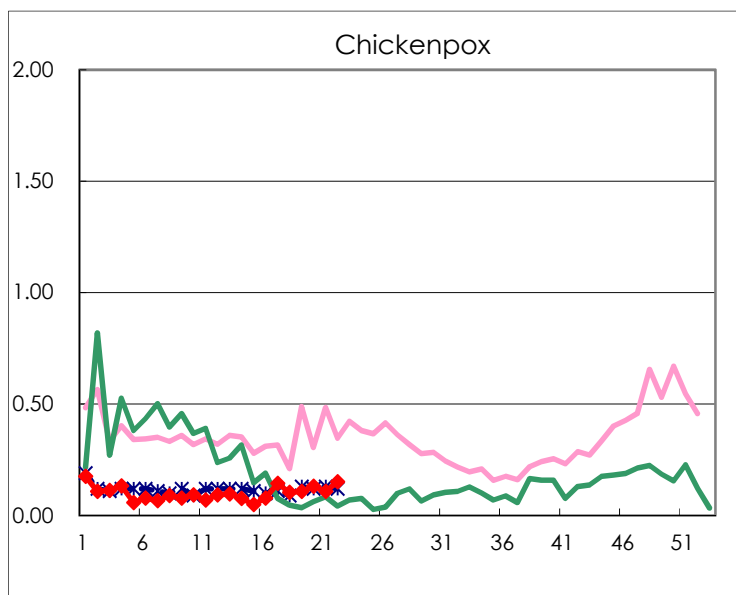
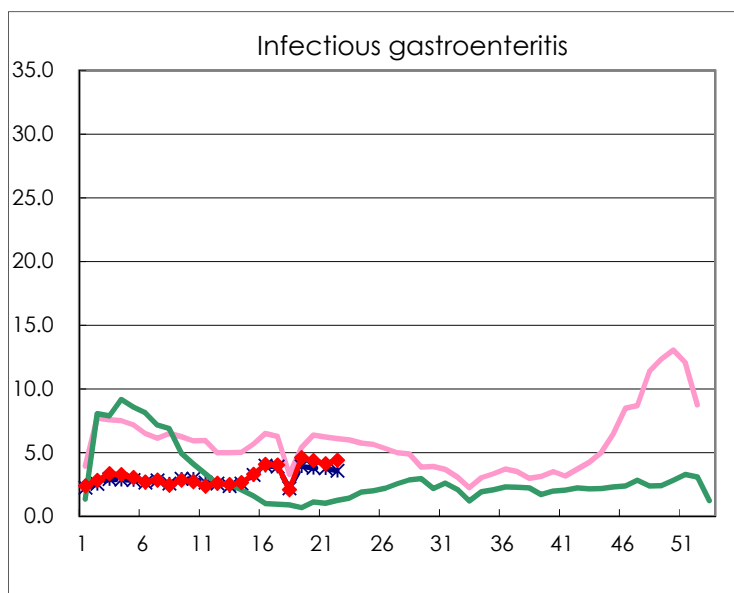
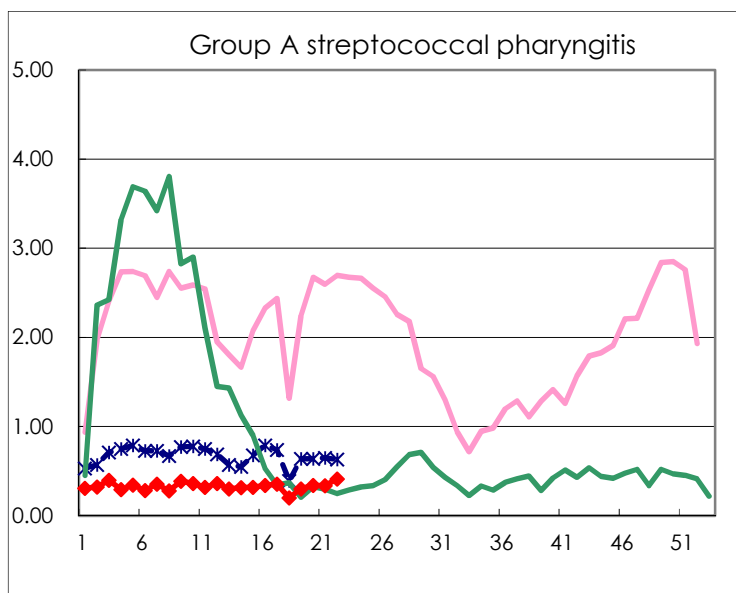
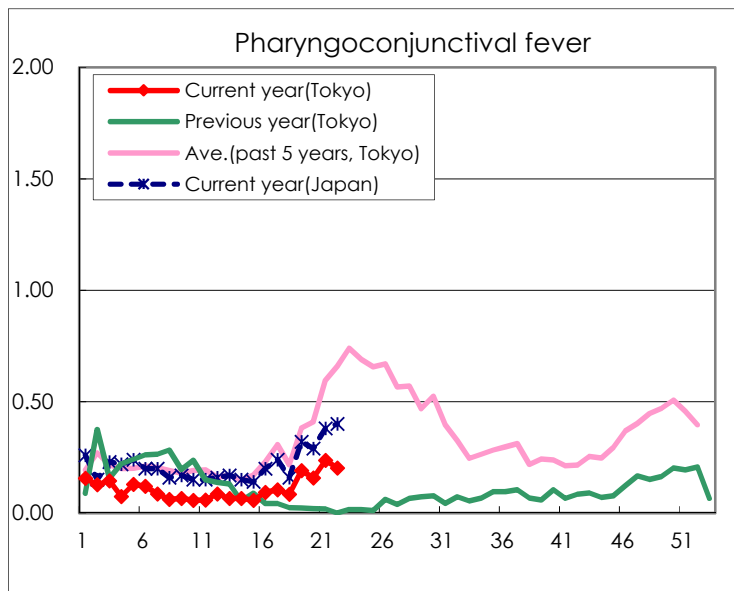
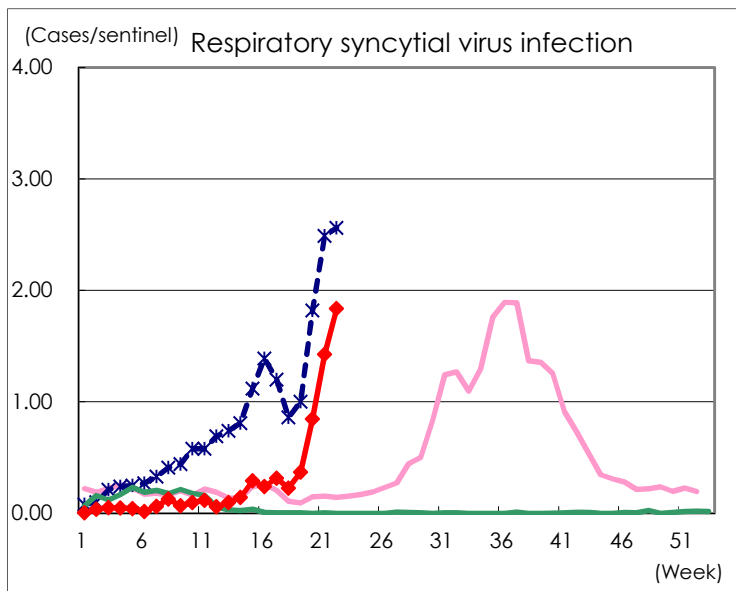
Category	Diseases	Tokyo					Japan	
		19th	20th	21st	22nd	Cum 2021	22nd	Cum 2021
V	Amebiasis	3	1	2		33	10	219
	Viral hepatitis(excluding hepatitis A and E)	2	1			25	1	84
	CRE infection	6	3	3	6	81	30	721
	Acute Flaccid Paralysis (excluding Acute poliomyelitis)		1			2		7
	Acute encephalitis(excluding JE and WNE)					7	5	138
	Cryptosporidiosis							2
	Creutzfeldt-Jakob disease					7	1	70
	Severe invasive streptococcal infections(TSLS)	1	2	1	1	29	6	270
	Acquired immunodeficiency syndrome (AIDS)	5	12	8	7	155	13	414
	Giardiasis	1			1	6	1	17
	Invasive <i>Haemophilus influenzae</i> disease	1	1	1	1	11	3	95
	Invasive meningococcal disease							
	Invasive pneumococcal disease	4	1	4	7	57	25	620
	Varicella (limited to hospitalized case)			1		13	2	112
	Congenital rubella syndrome							1
	Syphilis	55	44	46	48	901	98	2,658
	Disseminated cryptococcosis		2			6		59
	Tetanus					1	1	34
	Vancomycin-resistant <i>S. aureus</i> infection							
	Vancomycin-resistant <i>Enterococcus</i> infection				2	3	4	47
	Pertussis	2	1		1	32	4	250
Rubella					1		7	
Measles							2	
MDRA infection								

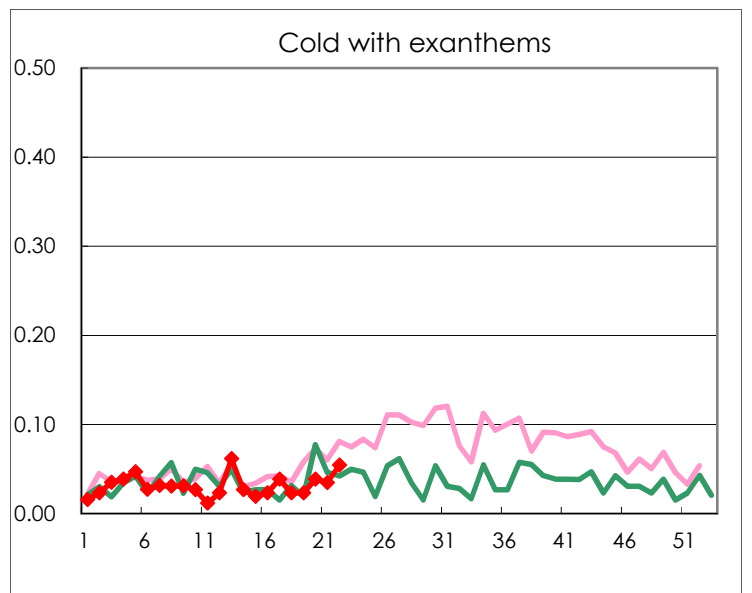
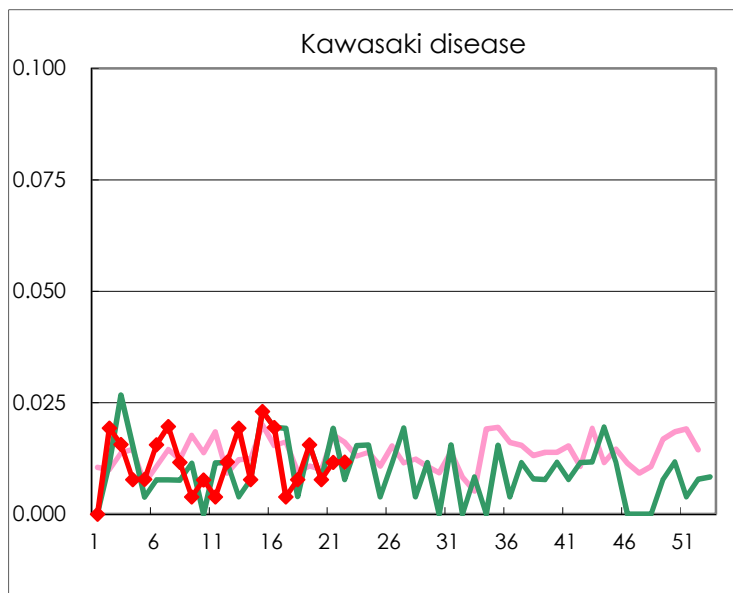
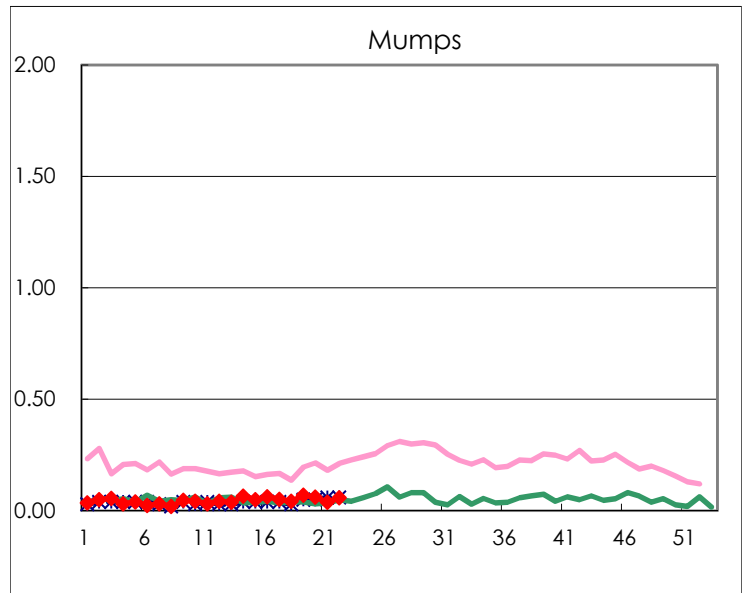
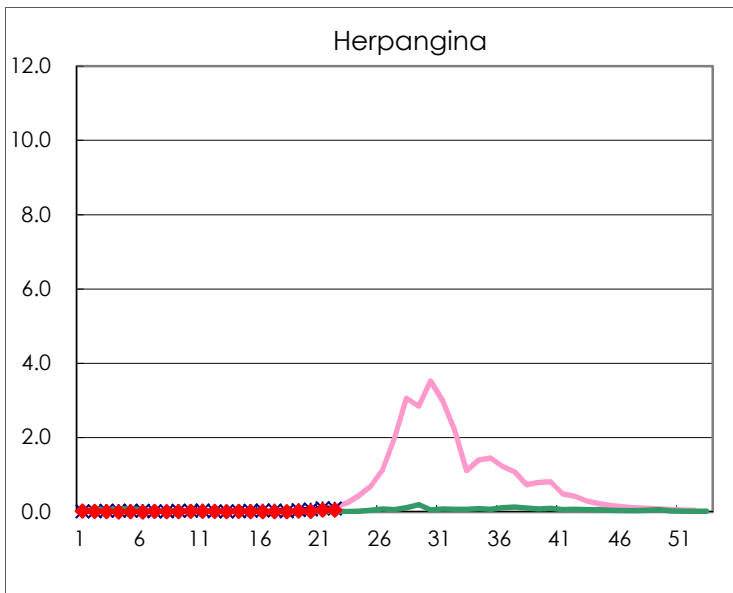
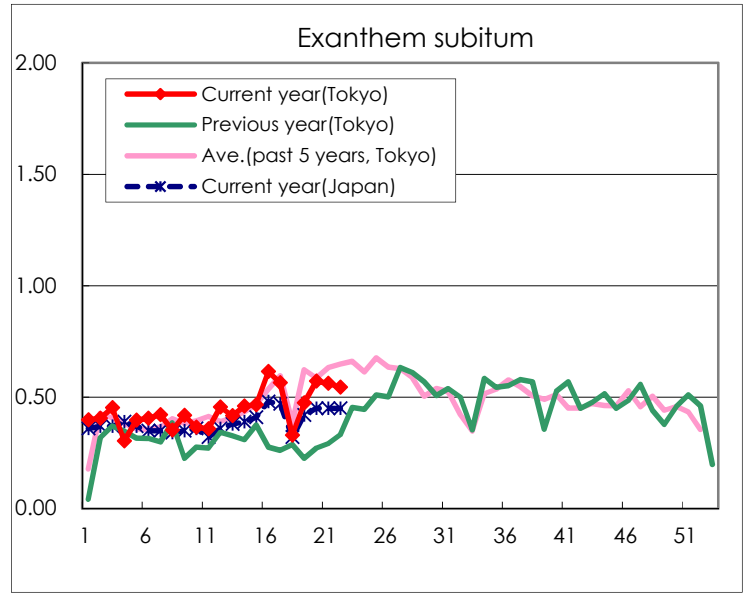
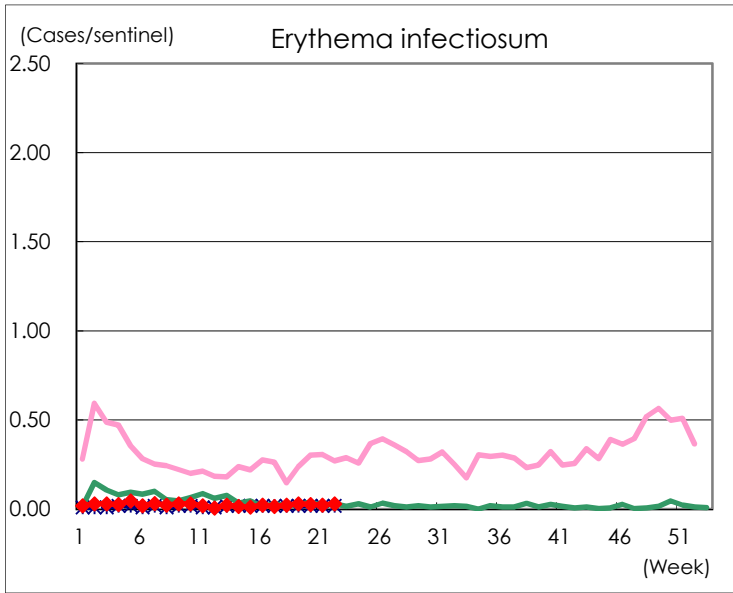
Number of patients with the diseases to be reported
by the designated clinics and hospitals

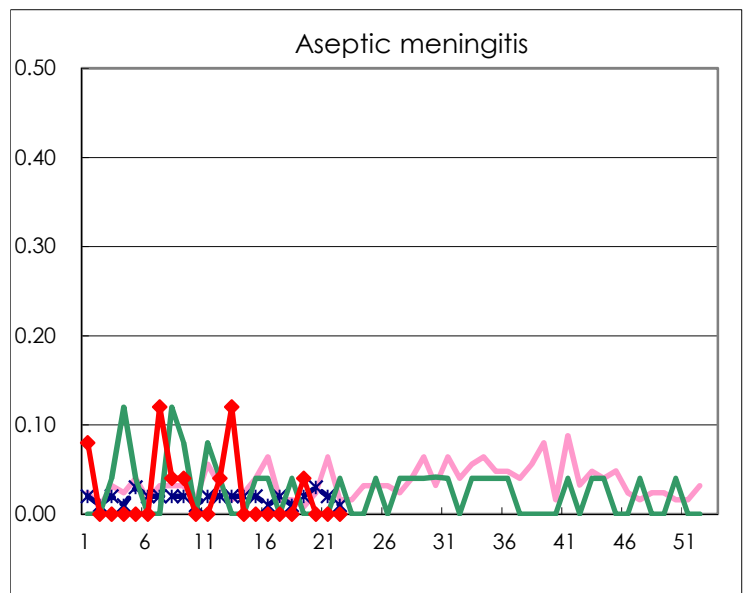
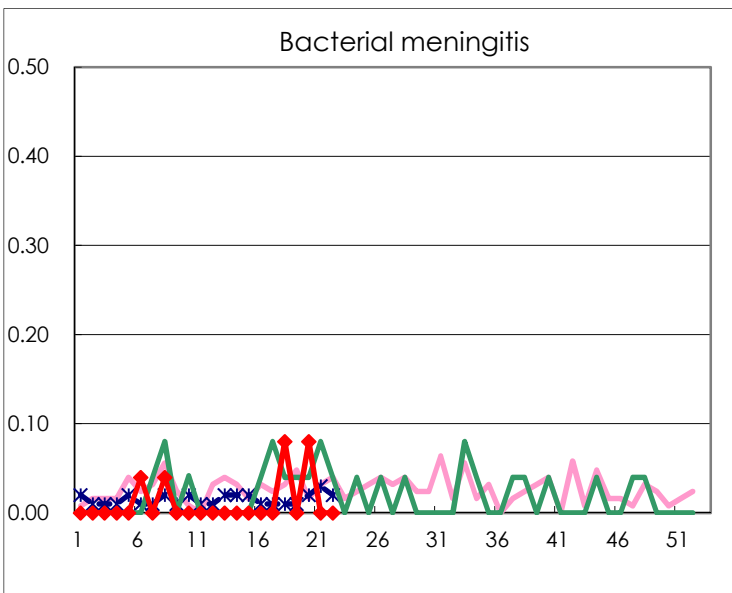
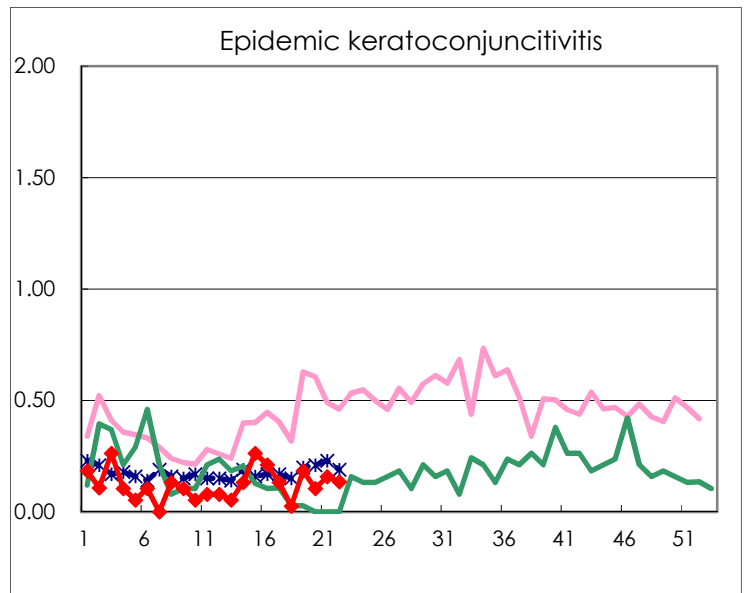
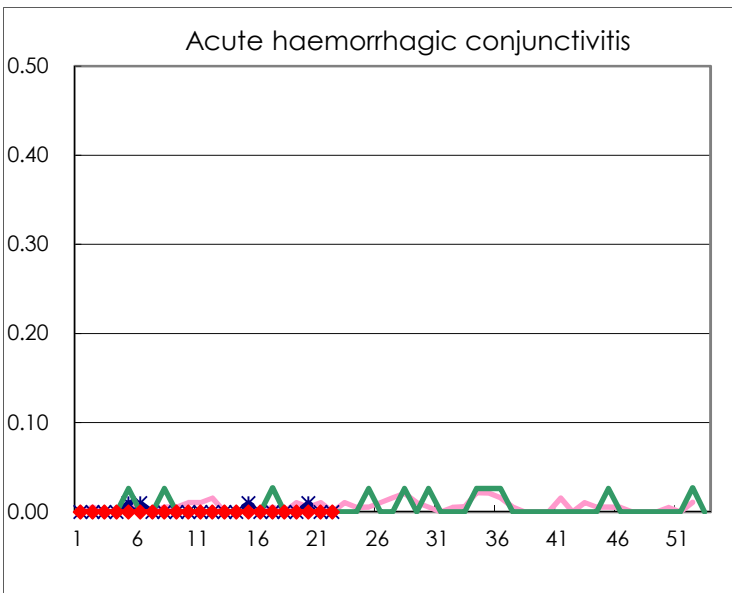
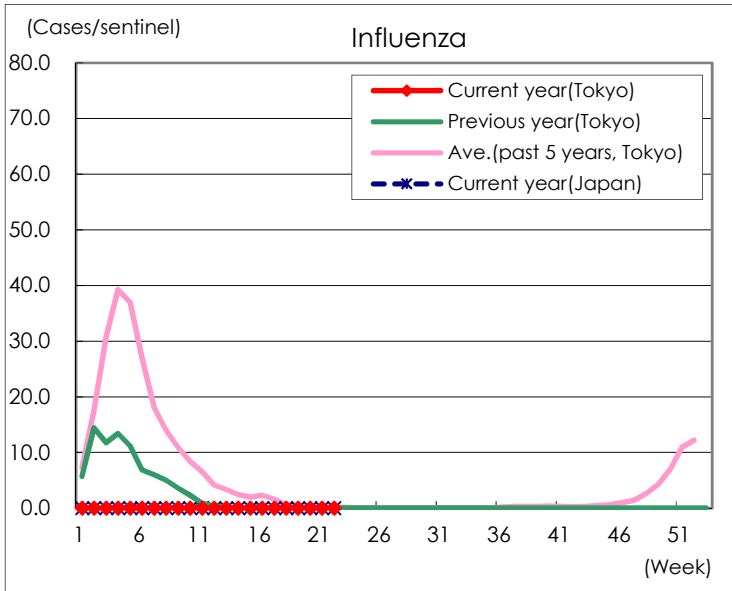
Diseases	Tokyo				
	19th	20th	21st	22nd	/sentinel
Respiratory syncytial virus infection	95	219	368	472	1.84
Pharyngoconjunctival fever	49	41	61	52	0.20
Group A streptococcal pharyngitis	77	88	87	106	0.41
Infectious gastroenteritis	1,176	1,128	1,058	1,126	4.38
Chickenpox	28	34	28	39	0.15
Hand, foot, and mouth disease	16	20	16	18	0.07
Erythema infectiosum	8	7	6	8	0.03
Exanthem subitum	122	148	145	140	0.54
Herpangina	6	5	13	12	0.05
Mumps	18	16	10	15	0.06
Kawasaki disease	4	2	3	3	0.01
Cold with exanthems	6	10	9	14	0.05
Influenza		1			
Acute hemorrhagic conjunctivitis					
Epidemic keratoconjunctivitis	7	4	6	5	0.14
Bacterial meningitis		2			
Aseptic meningitis	1				
Mycoplasma pneumonia					
Chlamydial pneumonia (excluding psittacosis)			2		
Infectious gastroenteritis (only by Rotavirus)					
Influenza-Associated Hospitalizations					

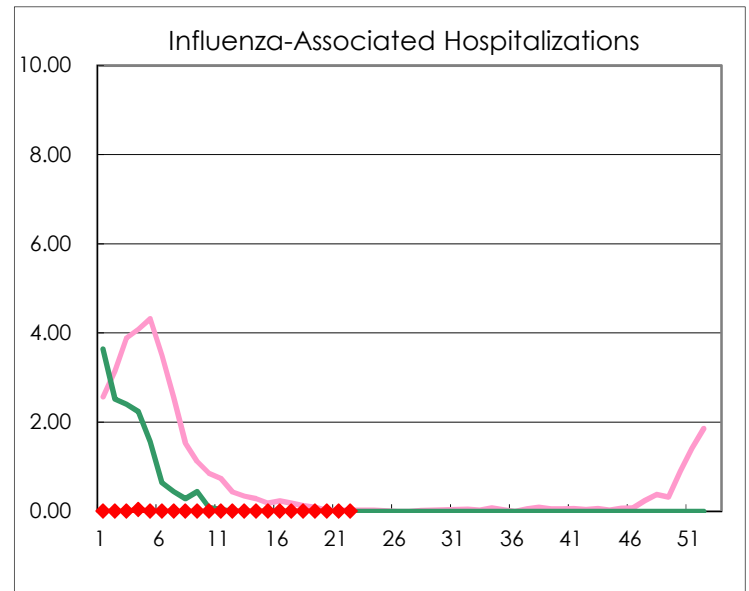
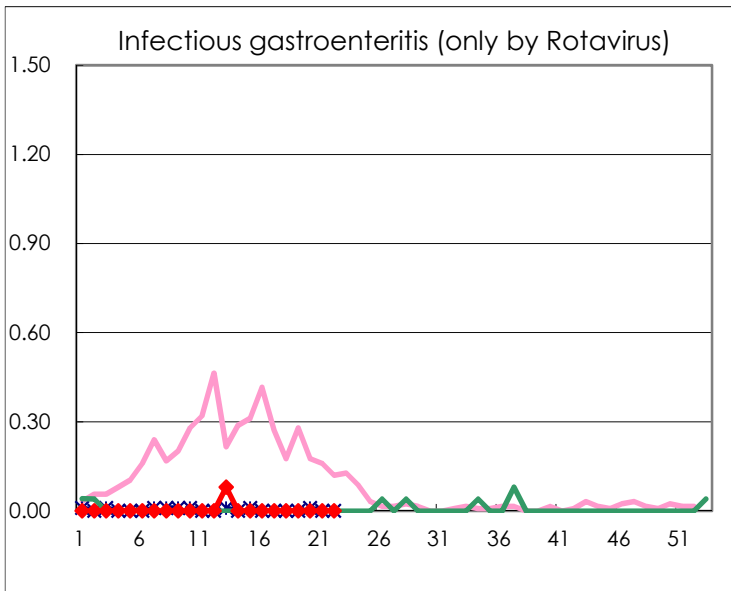
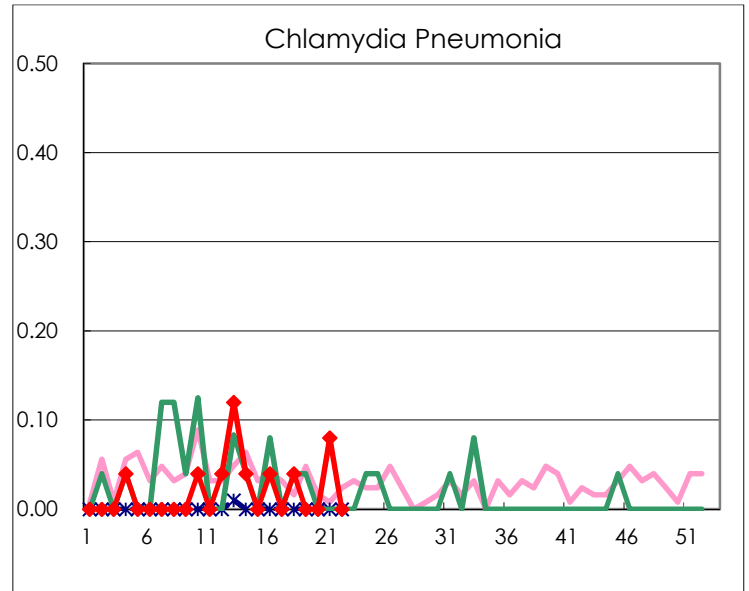
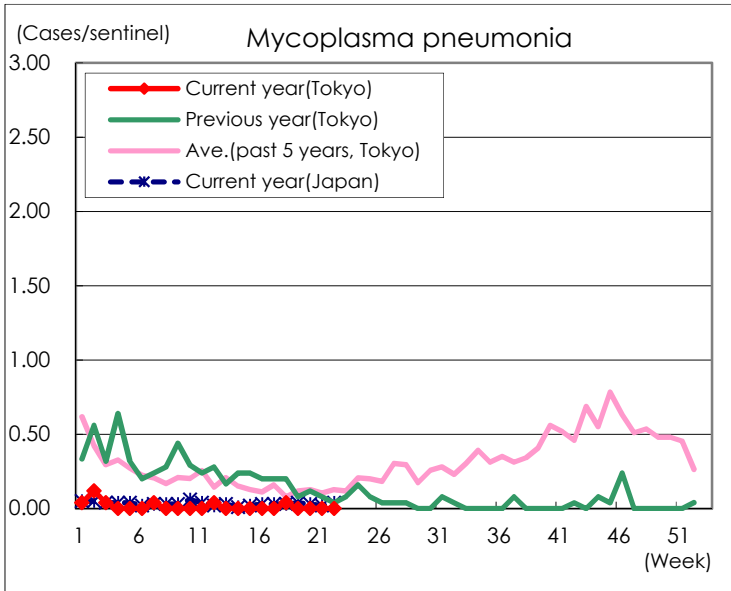
(Blank means 0.)

Disease Trend Graph (weekly reported cases per sentinel in comparison)









Number of sentinel facilities for weekly reporting		
Types of sentinels	Number of sentinels	Sentinels having reported
Pediatric	264	257
Influenza	419	403
Ophthalmic	39	37
Specially-designated	25	25