
INFECTIOUS DISEASES WEEKLY REPORT

TOKYO IDWR

Tokyo Metropolitan Infectious Disease Surveillance Center

24 June 2021 / Number 24
(6/14 ~ 6/20)

Surveillance System in Tokyo, Japan

The infectious diseases which all physicians must report
All physicians must report to health centers the incidence of the diseases which are shown at page one. Health centers electronically report the individual cases to Tokyo Metropolitan Infectious Disease Surveillance Center.

The infectious diseases required to be reported by the sentinels
The numbers of patients who visit the sentinel clinics or hospitals during a week are reported to health centers in Tokyo. And they electronically report the numbers to Tokyo Metropolitan Infectious Disease Surveillance Center. We have about 500 sentinel clinics and hospitals in Tokyo.

Tokyo Metropolitan Institute of Public Health

TEL:81-3-3363-3213 FAX:81-3-5332-7365

e-mail:www@tokyo-eiken.go.jp

URL:idsc.tokyo-eiken.go.jp/

Number of patients with the diseases which all physicians must report

Category	Diseases	Tokyo					Japan	
		21st	22nd	23rd	24th	Cum 2021	24th	Cum 2021
I	Ebola hemorrhagic fever							
	Crimean-Congo hemorrhagic fever							
	Smallpox							
	South American hemorrhagic fever							
	Plague							
	Marburg disease							
	Lassa fever							
II	Acute poliomyelitis							
	Tuberculosis	50	54	33	36	1,010	248	7,077
	Diphtheria							
	Severe Acute Respiratory Syndrome(SARS)							
	Middle East Respiratory Syndrome (MERS)							
	Avian influenza H5N1							
	Avian influenza H7N9							
III	Cholera							
	Shigellosis					2		4
	Enterohemorrhagic Escherichia coli infection	8	5	9	9	76	91	709
	Typhoid fever							
	Paratyphoid fever							
IV	Hepatitis E	2		5	2	71	6	252
	West Nile fever							
	Hepatitis A					9		36
	Echinococcosis	1				1		14
	Yellow fever							
	Psittacosis							3
	Omsk hemorrhagic fever							
	Relapsing fever							2
	Kyasanur forest disease							
	Q fever			1		1		1
	Rabies							
	Coccidioidomycosis							
	Monkeypox							
	Zika virus infection							
	Severe Fever with Thrombocytopenia Syndrome						3	47
	Hemorrhagic fever with renal syndrome							
	Western equine encephalitis							
	Tick-borne encephalitis							
	Anthrax							
	Chikungunya fever							
	Scrub typhus(Tsutsugamushi disease)					2	3	114
	Dengue fever							
	Eastern equine encephalitis							
	Avian influenza (excluding H5N1 and H7N9)							
	Nipah virus infection							
	Japanese spotted fever					1	7	115
	Japanese encephalitis							
	Hantavirus pulmonary syndrome							
	Herpes B virus infection							
	Glanders							
	Brucellosis							1
	Venezuelan equine encephalitis							
	Hendra virus infection							
Epidemic typhus								
Botulism				1	1		2	
Malaria	1				1		5	
Tularemia								
Lyme disease						1	6	
Lyssavirus infection(excluding rabies)								
Rift valley fever								
Melioidosis								
Legionellosis	3	1	1	4	43	43	619	
Leptospirosis					1		2	
Rocky mountain spotted fever								

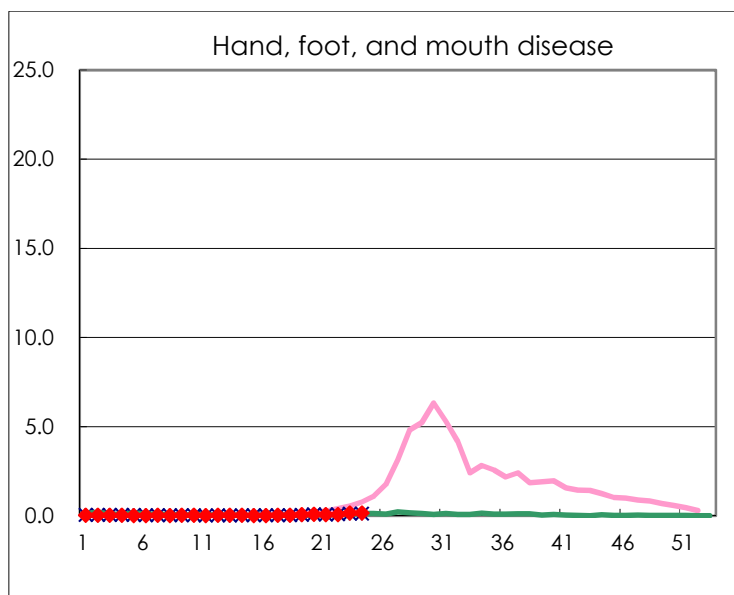
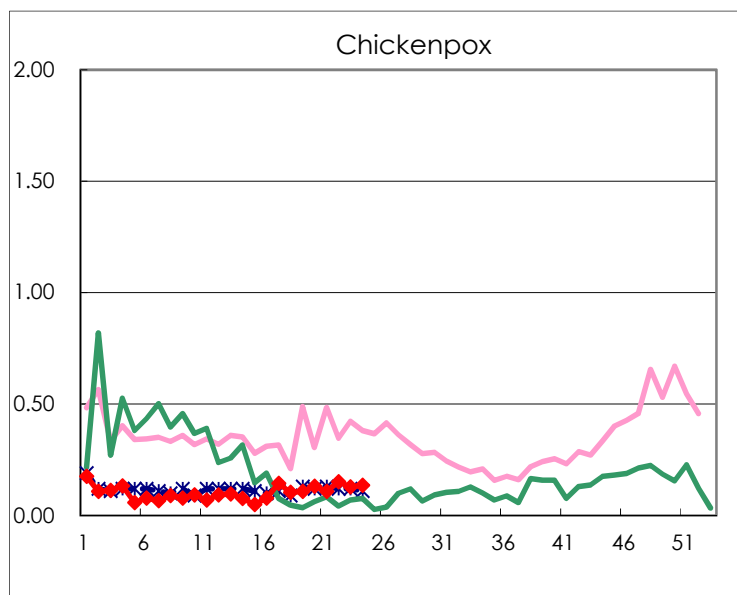
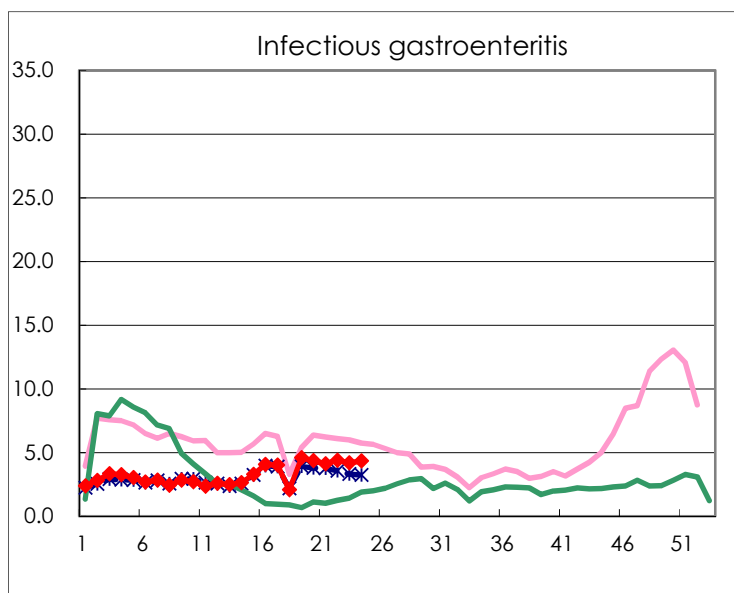
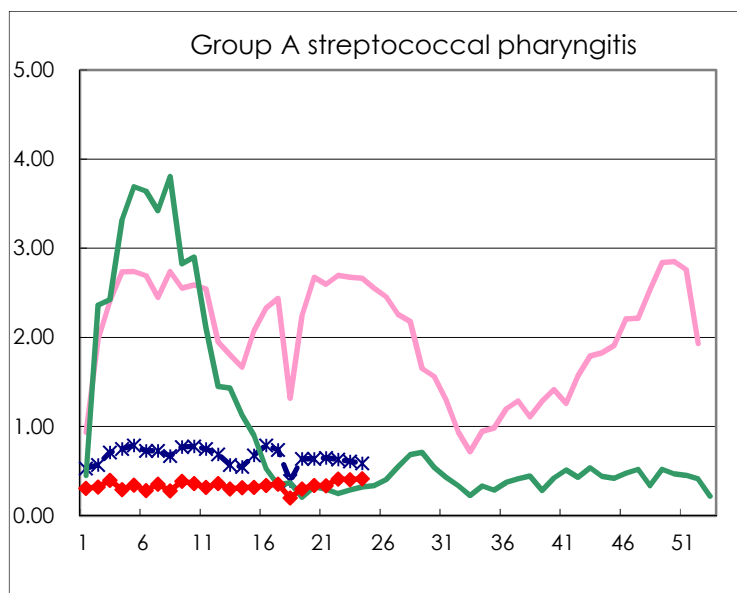
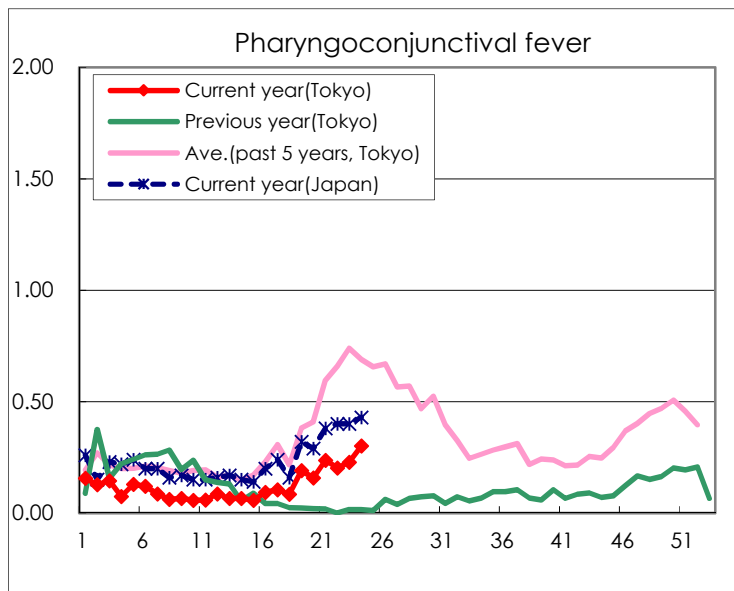
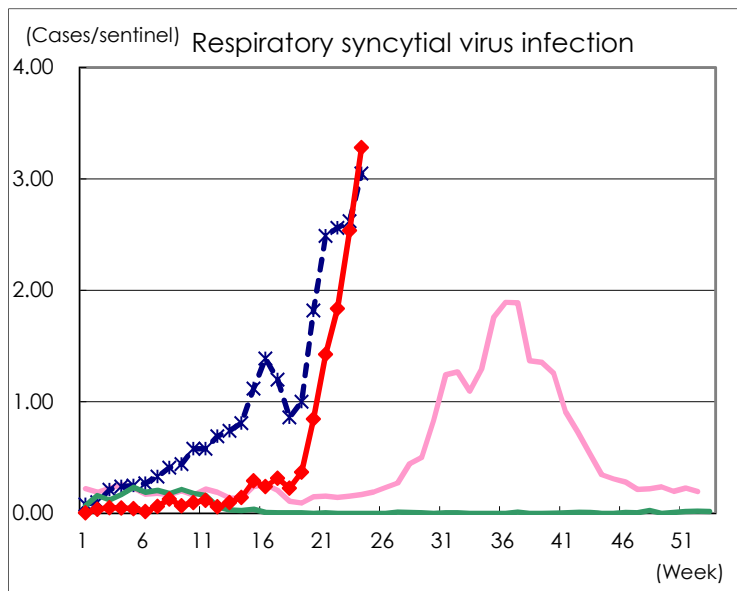
Category	Diseases	Tokyo					Japan	
		21st	22nd	23rd	24th	Cum 2021	24th	Cum 2021
V	Amebiasis	2	1	5	3	42	5	247
	Viral hepatitis(excluding hepatitis A and E)				1	26		88
	CRE infection	3	6	5	3	90	25	808
	Acute Flaccid Paralysis (excluding Acute poliomyelitis)					2		8
	Acute encephalitis(excluding JE and WNE)				1	8	1	148
	Cryptosporidiosis							2
	Creutzfeldt-Jakob disease					7	1	75
	Severe invasive streptococcal infections(TSLS)	1	1		5	34	14	294
	Acquired immunodeficiency syndrome (AIDS)	8	7	8	7	170	7	462
	Giardiasis		1			6		18
	Invasive <i>Haemophilus influenzae</i> disease	1	1	1		12	5	104
	Invasive meningococcal disease						1	1
	Invasive pneumococcal disease	4	7		2	59	24	678
	Varicella (limited to hospitalized case)	1		1		14	7	125
	Congenital rubella syndrome							1
	Syphilis	46	49	50	47	999	98	2,955
	Disseminated cryptococcosis			1		7	1	63
	Tetanus			1		2	2	40
	Vancomycin-resistant <i>S. aureus</i> infection							
	Vancomycin-resistant <i>Enterococcus</i> infection		2		1	4	2	55
	Pertussis		1			32	7	274
Rubella					1		7	
Measles							2	
MDRA infection							1	

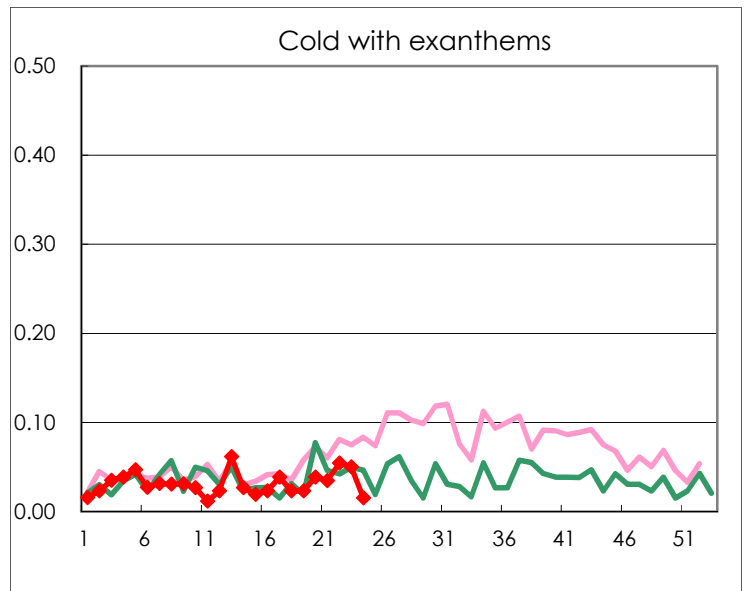
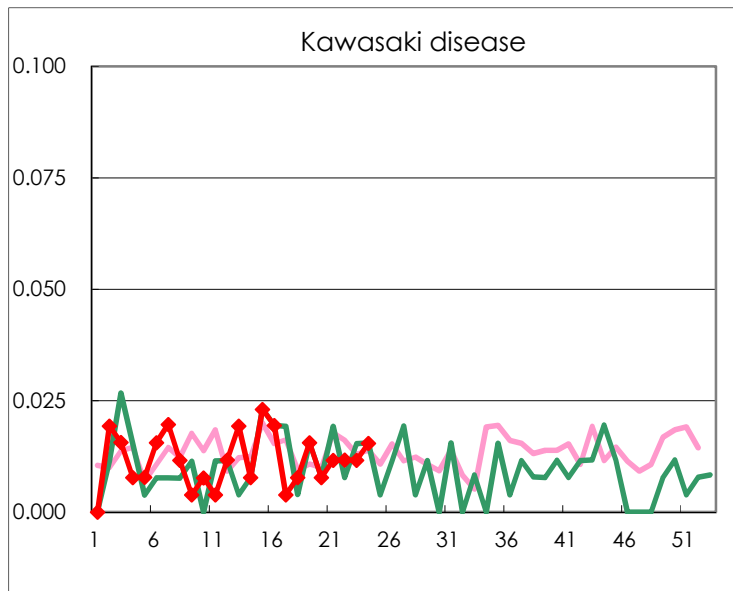
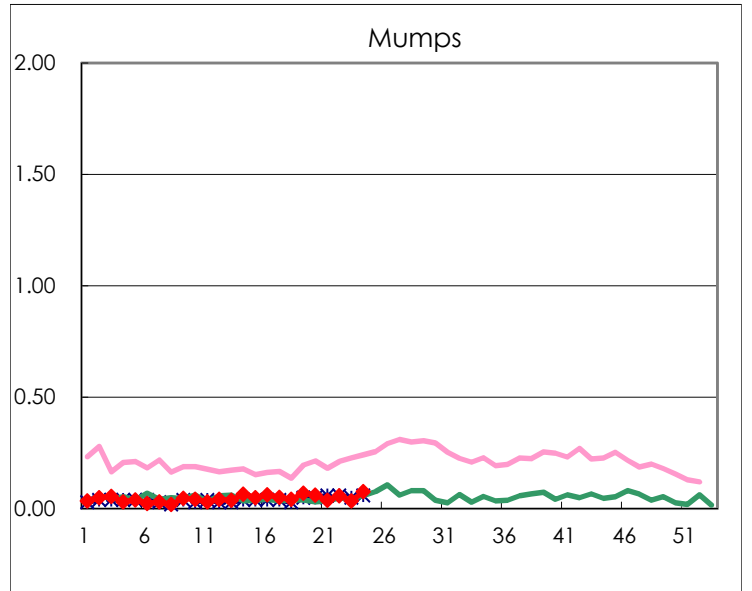
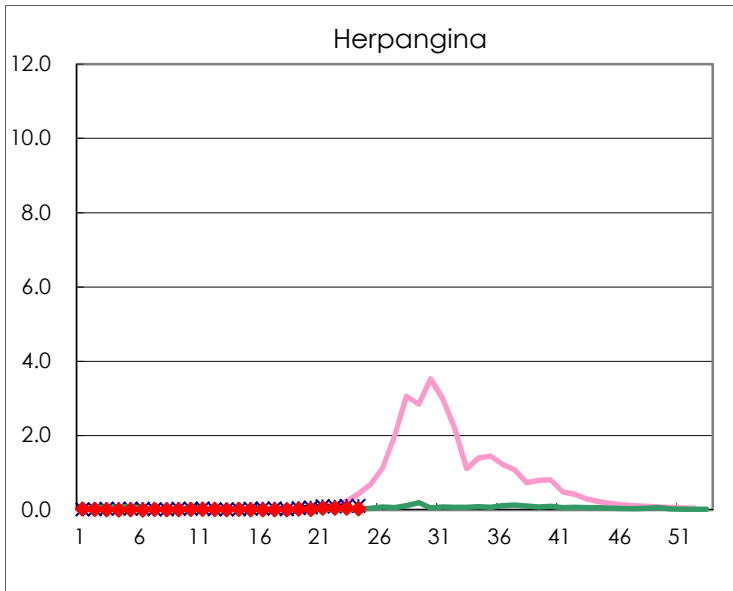
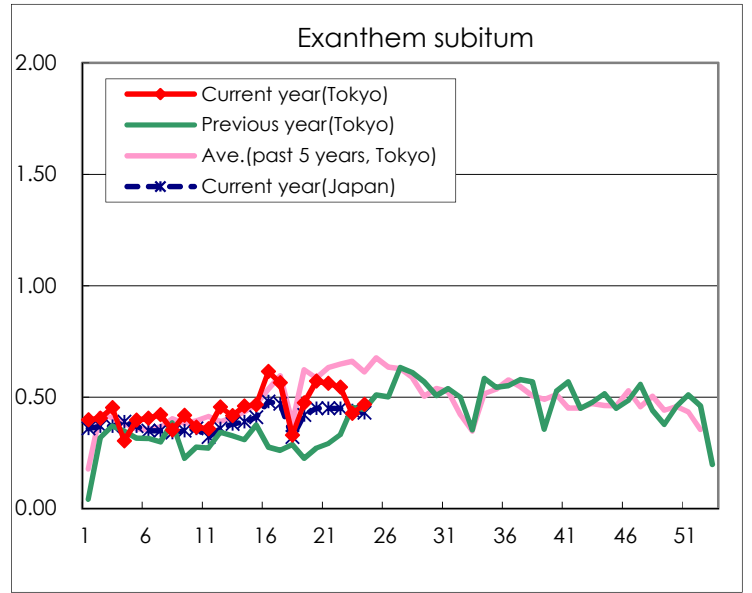
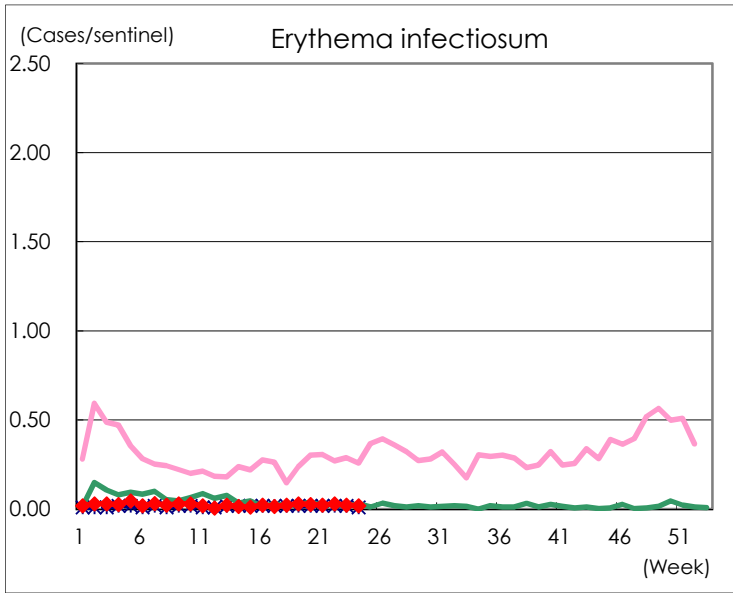
Number of patients with the diseases to be reported
by the designated clinics and hospitals

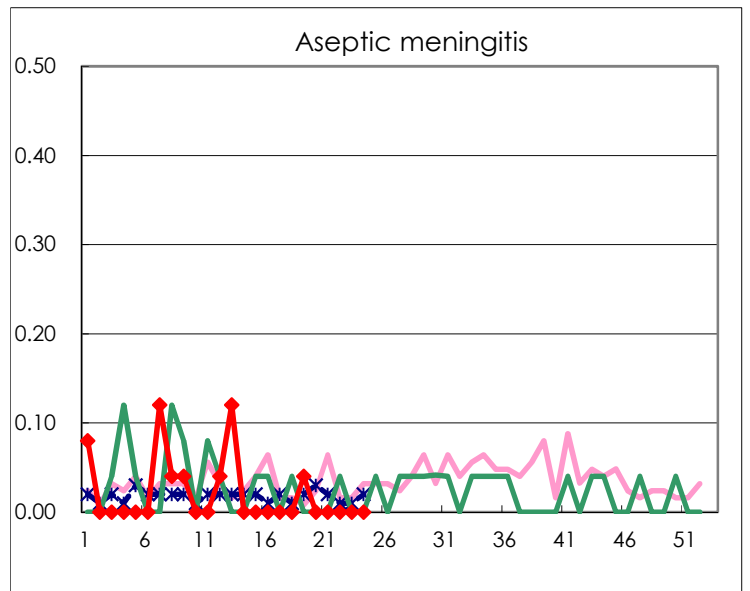
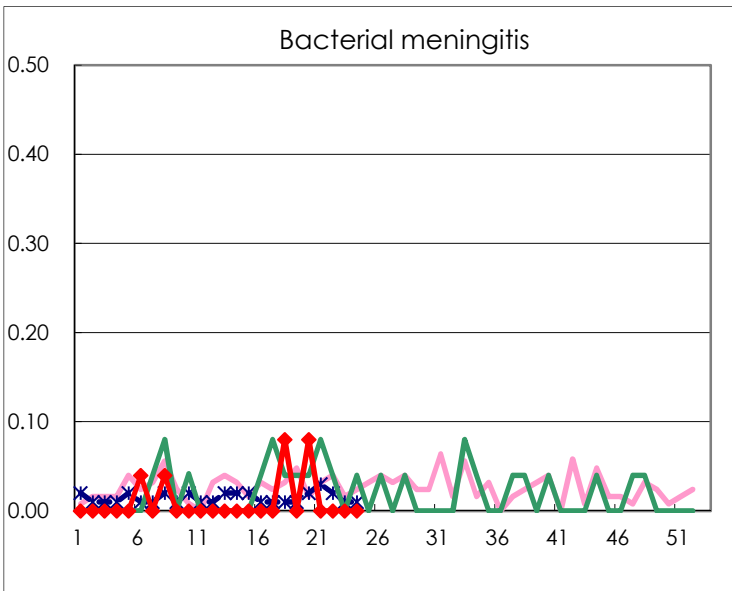
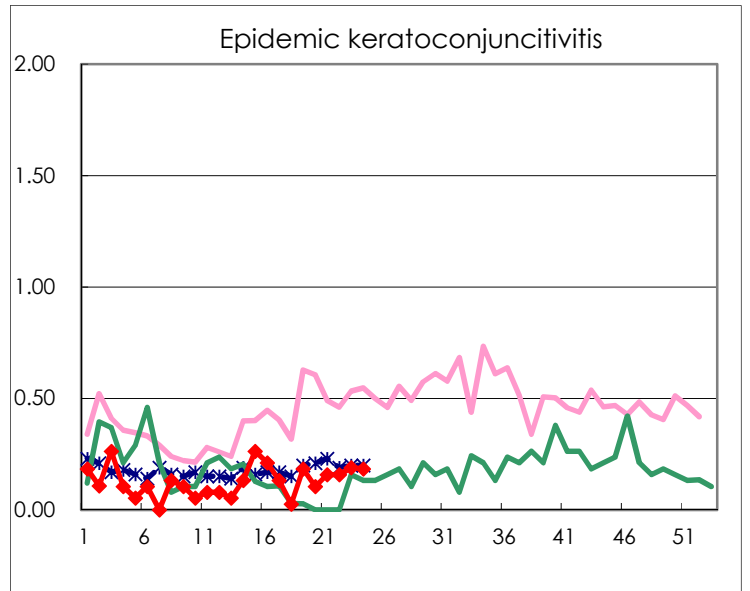
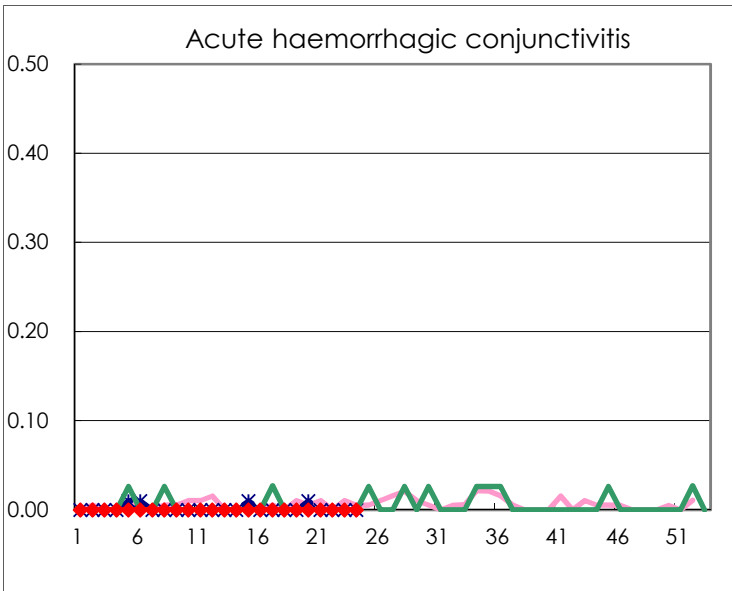
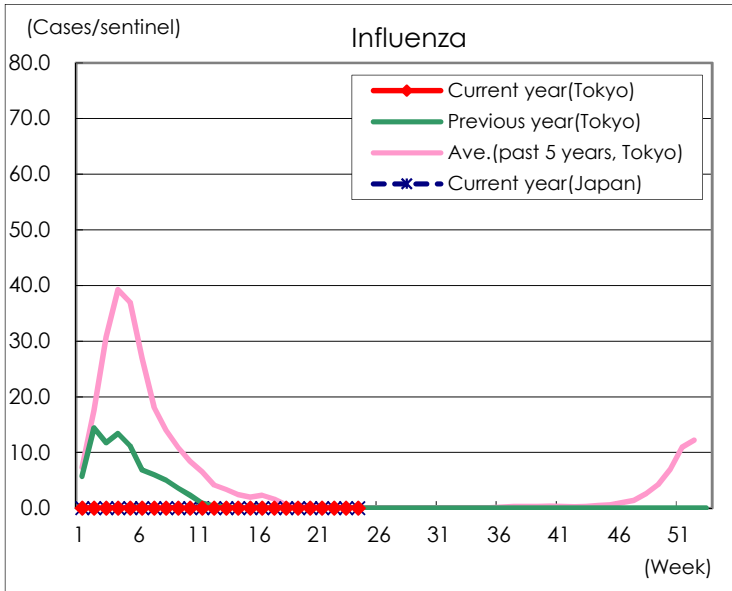
Diseases	Tokyo				
	21st	22nd	23rd	24th	/sentinel
Respiratory syncytial virus infection	368	472	655	850	3.28
Pharyngoconjunctival fever	61	52	59	78	0.30
Group A streptococcal pharyngitis	87	106	105	108	0.42
Infectious gastroenteritis	1,058	1,126	1,077	1,124	4.34
Chickenpox	28	39	33	35	0.14
Hand, foot, and mouth disease	16	18	37	40	0.15
Erythema infectiosum	6	8	6	5	0.02
Exanthem subitum	145	140	110	121	0.47
Herpangina	13	12	13	9	0.03
Mumps	10	15	9	20	0.08
Kawasaki disease	3	3	3	4	0.02
Cold with exanthems	9	14	13	4	0.02
Influenza					
Acute hemorrhagic conjunctivitis					
Epidemic keratoconjunctivitis	6	6	7	7	0.18
Bacterial meningitis					
Aseptic meningitis					
<i>Mycoplasma pneumoniae</i>		1			
Chlamydial pneumonia (excluding psittacosis)	2			1	0.04
Infectious gastroenteritis (only by Rotavirus)			1		
Influenza-Associated Hospitalizations					

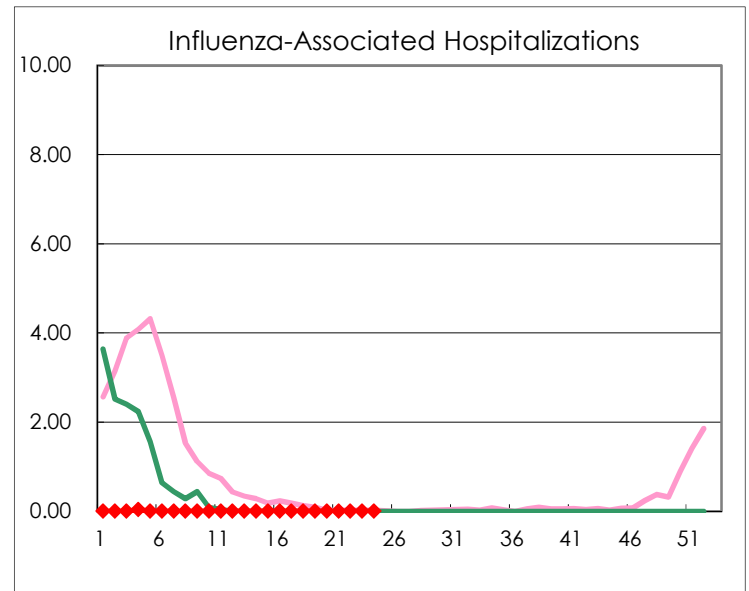
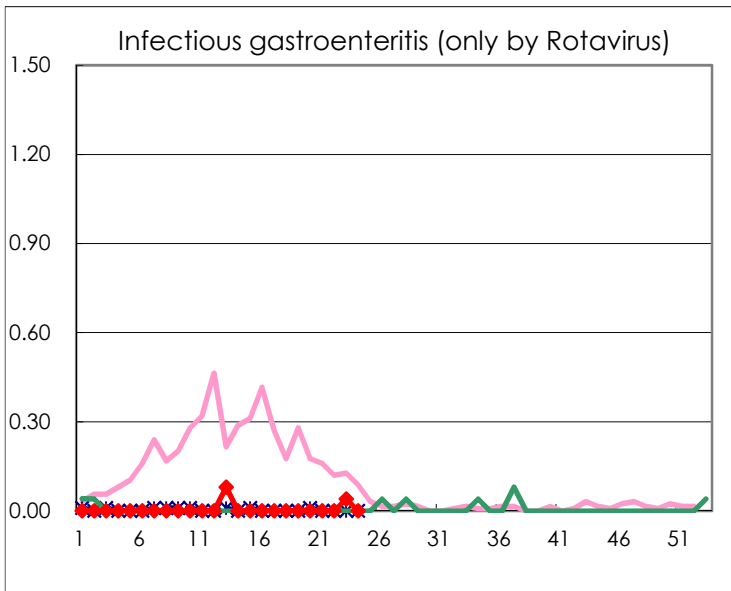
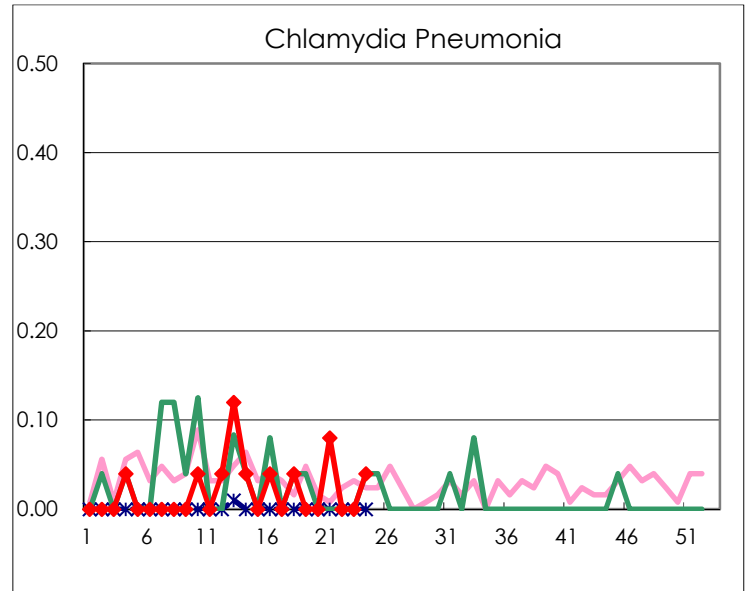
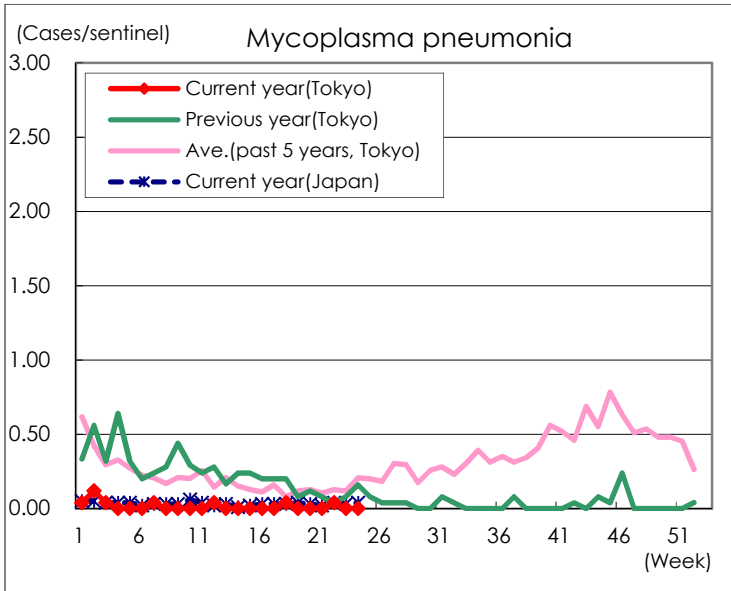
(Blank means 0.)

Disease Trend Graph (weekly reported cases per sentinel in comparison)









Number of sentinel facilities for weekly reporting		
Types of sentinels	Number of sentinels	Sentinels having reported
Pediatric	264	259
Influenza	419	403
Ophthalmic	39	38
Specially-designated	25	25