
INFECTIOUS DISEASES WEEKLY REPORT

TOKYO IDWR

Tokyo Metropolitan Infectious Disease Surveillance Center

15 July 2021 / Number 27
(7/5 ~ 7/11)

Surveillance System in Tokyo, Japan

The infectious diseases which all physicians must report
All physicians must report to health centers the incidence of the diseases which are shown at page one. Health centers electronically report the individual cases to Tokyo Metropolitan Infectious Disease Surveillance Center.

The infectious diseases required to be reported by the sentinels
The numbers of patients who visit the sentinel clinics or hospitals during a week are reported to health centers in Tokyo. And they electronically report the numbers to Tokyo Metropolitan Infectious Disease Surveillance Center. We have about 500 sentinel clinics and hospitals in Tokyo.

Tokyo Metropolitan Institute of Public Health

TEL:81-3-3363-3213 FAX:81-3-5332-7365

e-mail:www@tokyo-eiken.go.jp

URL:idsc.tokyo-eiken.go.jp/

Number of patients with the diseases which all physicians must report

Category	Diseases	Tokyo					Japan	
		24th	25th	26th	27th	Cum 2021	27th	Cum 2021
I	Ebola hemorrhagic fever							
	Crimean-Congo hemorrhagic fever							
	Smallpox							
	South American hemorrhagic fever							
	Plague							
	Marburg disease							
	Lassa fever							
II	Acute poliomyelitis							
	Tuberculosis	37	42	56	38	1,152	257	8,072
	Diphtheria							
	Severe Acute Respiratory Syndrome(SARS)							
	Middle East Respiratory Syndrome (MERS)							
	Avian influenza H5N1							
	Avian influenza H7N9							
III	Cholera							
	Shigellosis					2		4
	Enterohemorrhagic Escherichia coli infection	9	8	15	12	111	102	1,043
	Typhoid fever							
	Paratyphoid fever							
IV	Hepatitis E	2	1	1		73	1	268
	West Nile fever							
	Hepatitis A				1	10	1	39
	Echinococcosis					1	1	16
	Yellow fever							
	Psittacosis							5
	Omsk hemorrhagic fever							
	Relapsing fever							3
	Kyasanur forest disease							
	Q fever					1		1
	Rabies							
	Coccidioidomycosis							
	Monkeypox							
	Zika virus infection							
	Severe Fever with Thrombocytopenia Syndrome						2	67
	Hemorrhagic fever with renal syndrome							
	Western equine encephalitis							
	Tick-borne encephalitis							
	Anthrax							
	Chikungunya fever							
	Scrub typhus(Tsutsugamushi disease)					2	2	122
	Dengue fever							
	Eastern equine encephalitis							
	Avian influenza (excluding H5N1 and H7N9)							
	Nipah virus infection							
	Japanese spotted fever				1	2	12	177
	Japanese encephalitis							
	Hantavirus pulmonary syndrome							
	Herpes B virus infection							
	Glanders							
	Brucellosis							1
	Venezuelan equine encephalitis							
	Hendra virus infection							
Epidemic typhus								
Botulism	1				1		2	
Malaria					1	2	7	
Tularemia								
Lyme disease						1	9	
Lyssavirus infection(excluding rabies)								
Rift valley fever								
Melioidosis								
Legionellosis	4	1	2	1	47	37	762	
Leptospirosis					1		3	
Rocky mountain spotted fever								

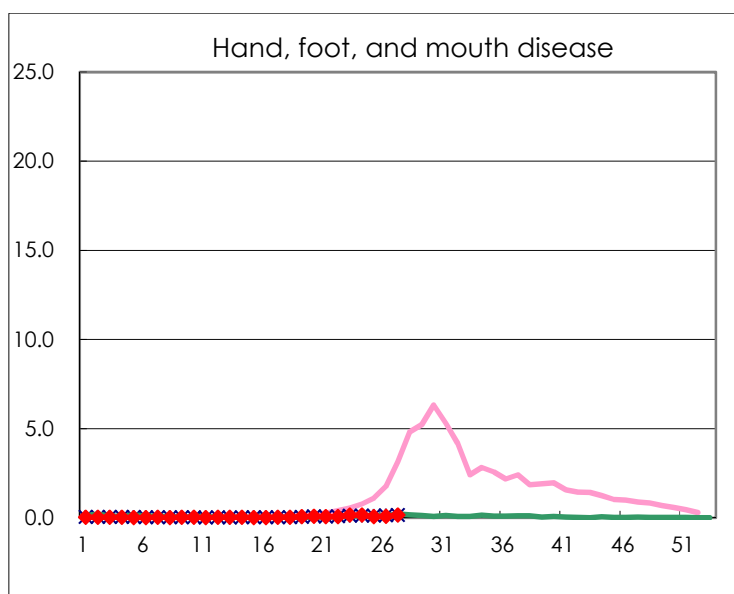
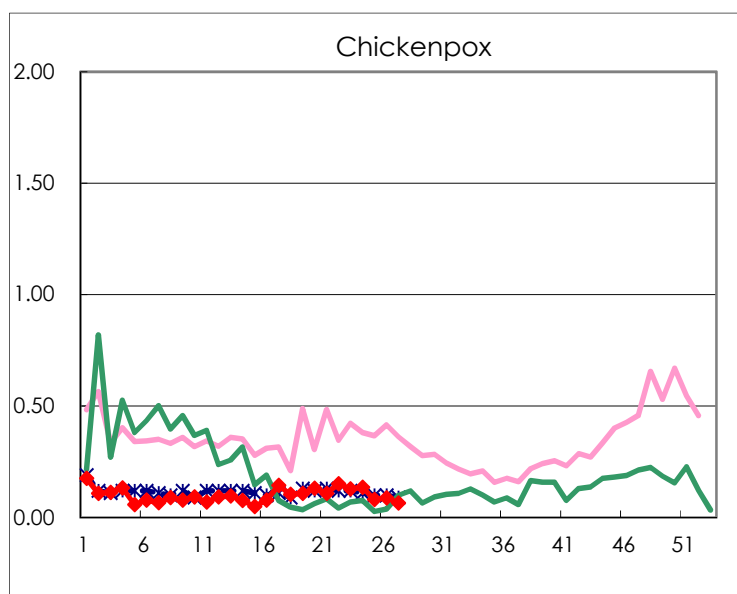
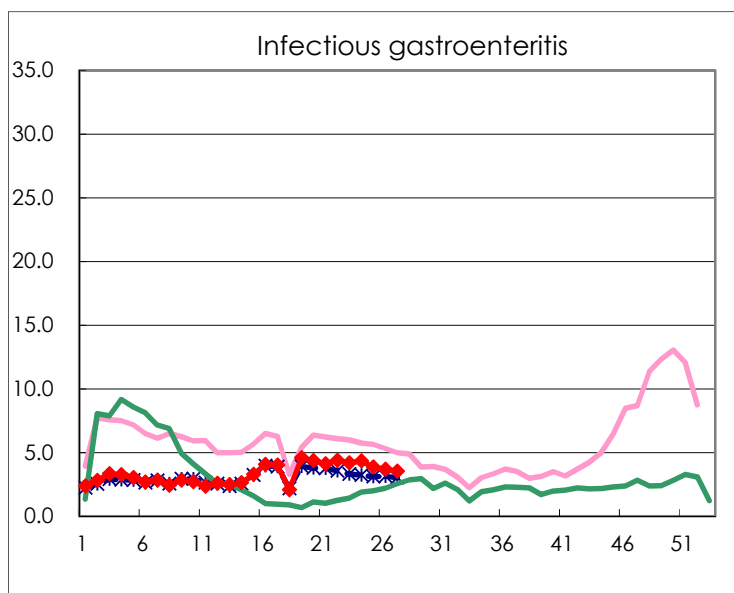
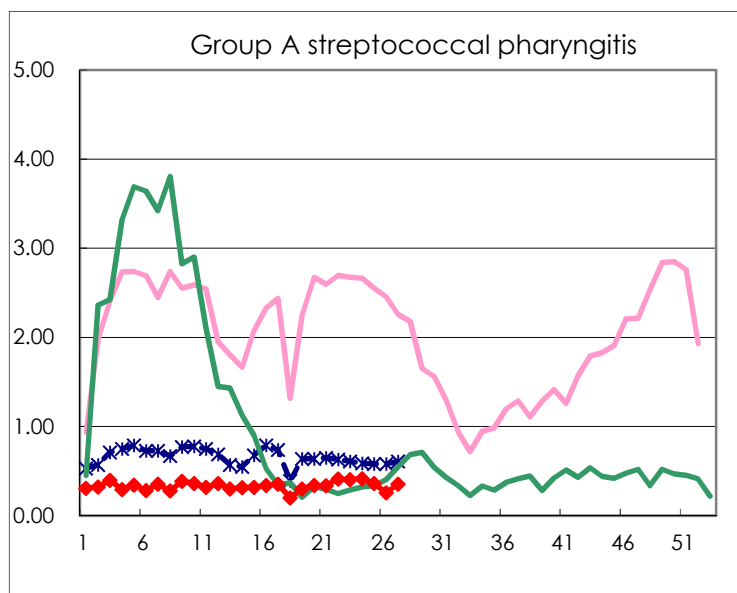
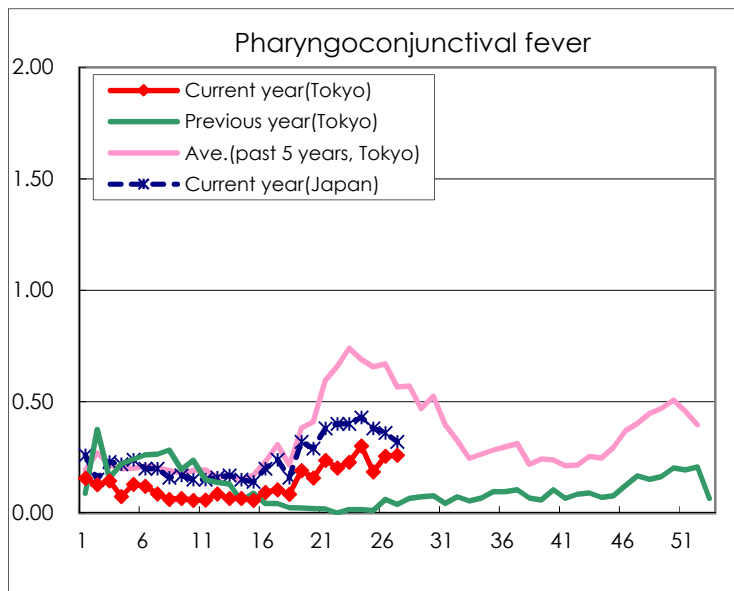
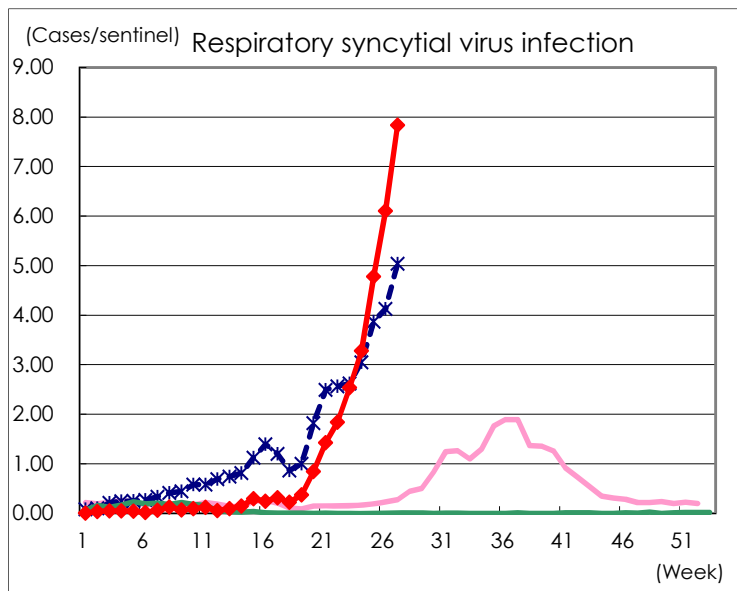
Category	Diseases	Tokyo					Japan	
		24th	25th	26th	27th	Cum 2021	27th	Cum 2021
V	Amebiasis	3	3	1	2	48	4	278
	Viral hepatitis(excluding hepatitis A and E)	1			2	28		100
	CRE infection	3	3	2	6	101	30	940
	Acute Flaccid Paralysis (excluding Acute poliomyelitis)					2		9
	Acute encephalitis(excluding JE and WNE)	1				8	6	178
	Cryptosporidiosis							3
	Creutzfeldt-Jakob disease			2		9	1	85
	Severe invasive streptococcal infections(TSLS)	5			1	35	13	332
	Acquired immunodeficiency syndrome (AIDS)	7	7	3	8	188	10	523
	Giardiasis				1	7	1	21
	Invasive <i>Haemophilus influenzae</i> disease		2			14		113
	Invasive meningococcal disease							1
	Invasive pneumococcal disease	2	3	2	4	68	17	747
	Varicella (limited to hospitalized case)					14	5	136
	Congenital rubella syndrome							1
	Syphilis	47	58	36	48	1,141	109	3,465
	Disseminated cryptococcosis					7	3	75
	Tetanus					2		45
	Vancomycin-resistant <i>S. aureus</i> infection							
	Vancomycin-resistant <i>Enterococcus</i> infection	1				4	3	69
	Pertussis		1			33	17	341
Rubella					1		7	
Measles						1	4	
MDRA infection							1	

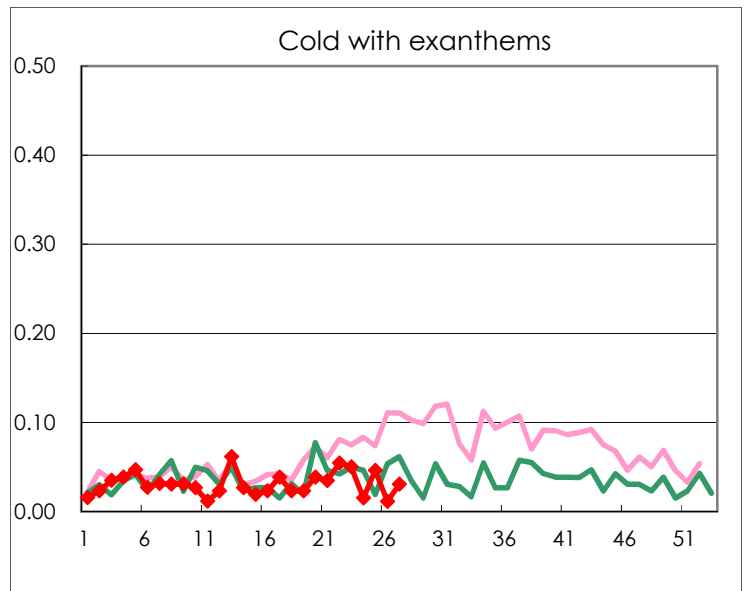
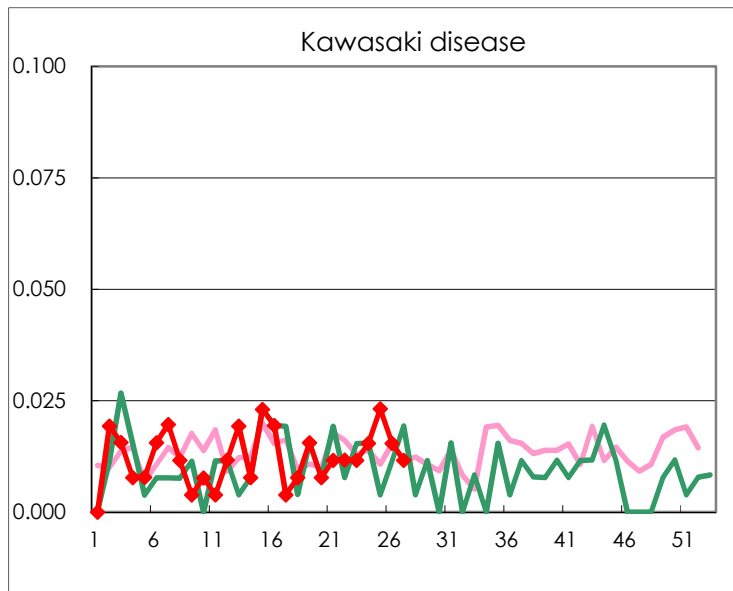
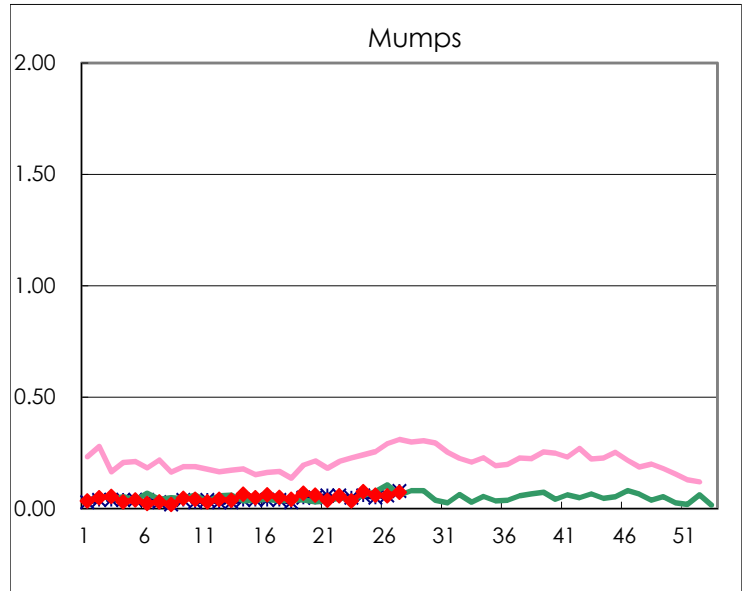
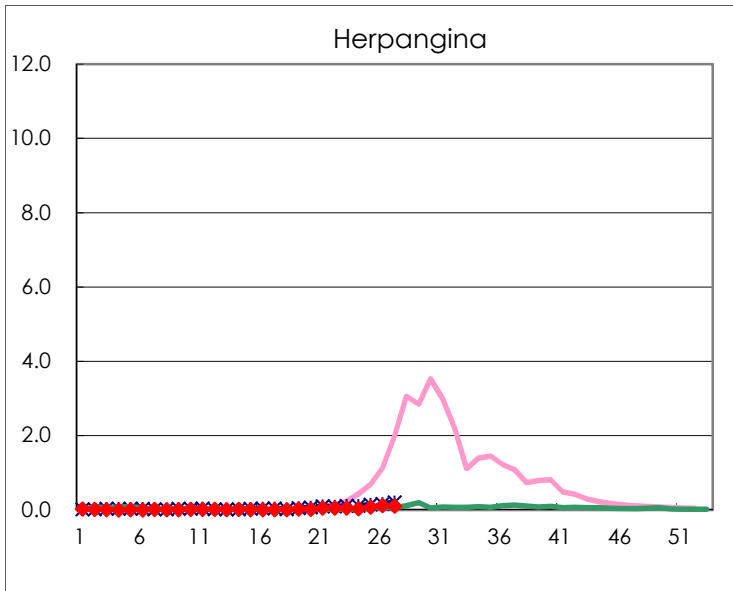
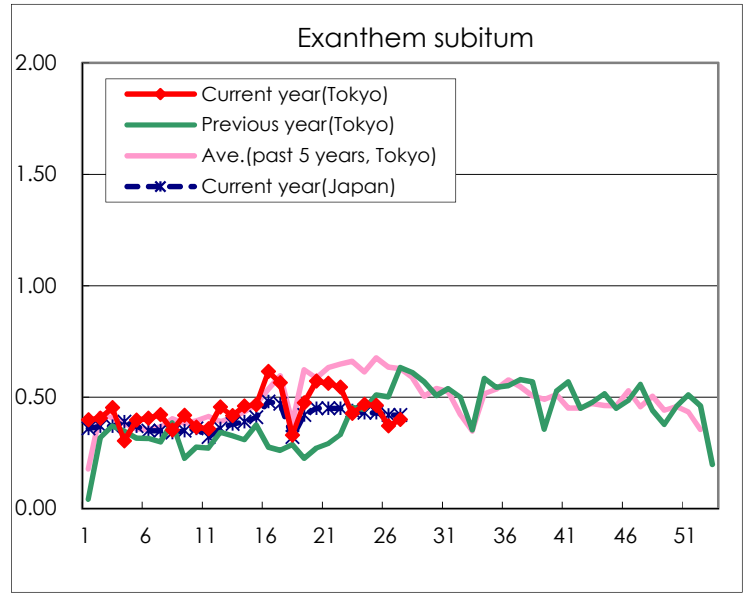
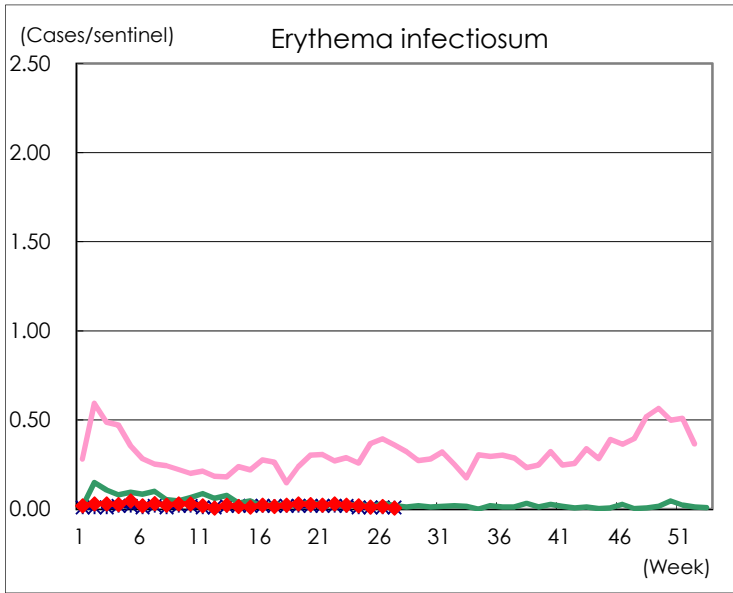
Number of patients with the diseases to be reported
by the designated clinics and hospitals

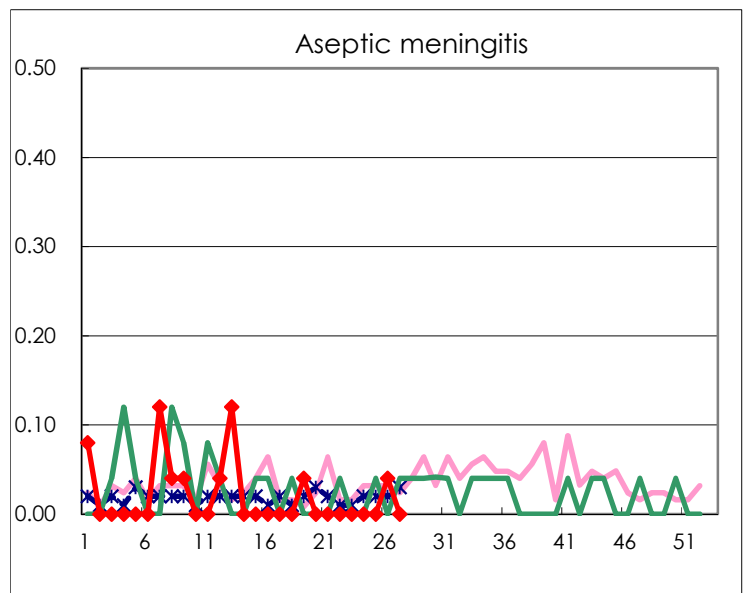
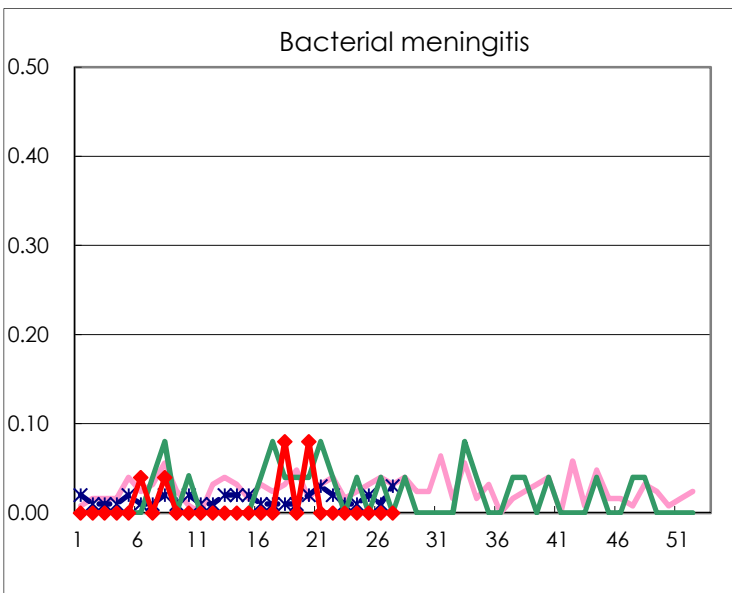
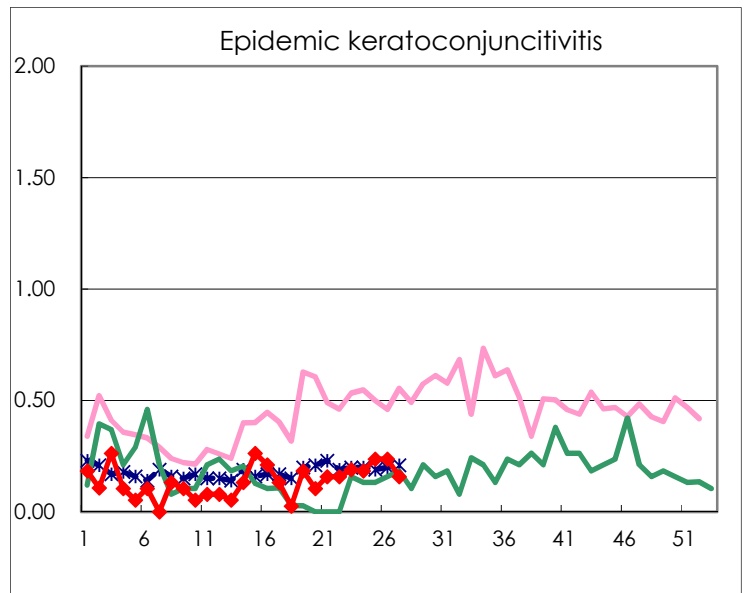
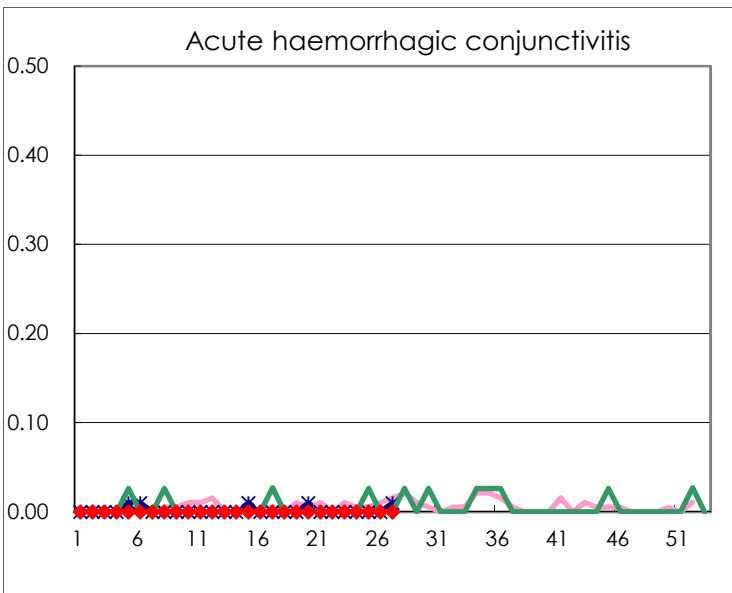
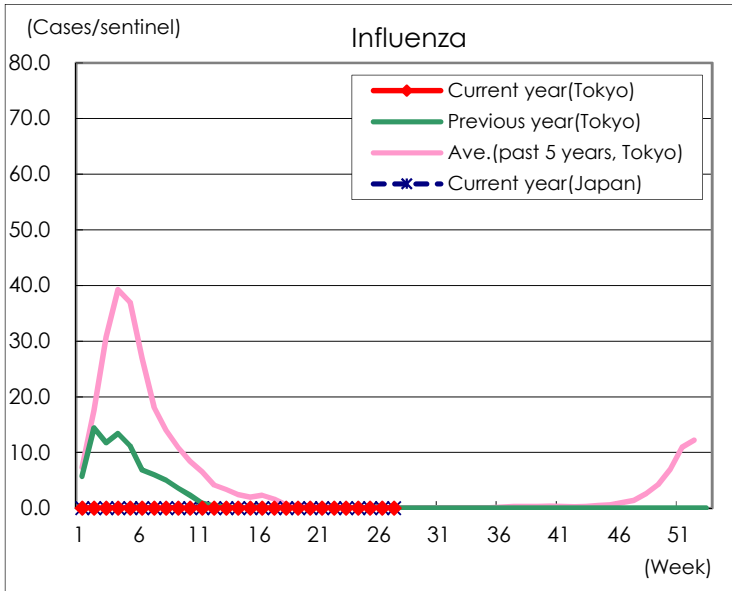
Diseases	Tokyo				
	24th	25th	26th	27th	/sentinel
Respiratory syncytial virus infection	850	1,238	1,581	2,022	7.84
Pharyngoconjunctival fever	78	48	66	67	0.26
Group A streptococcal pharyngitis	108	94	67	92	0.36
Infectious gastroenteritis	1,124	1,000	956	911	3.53
Chickenpox	35	21	23	17	0.07
Hand, foot, and mouth disease	40	18	22	37	0.14
Erythema infectiosum	5	3	4	2	0.01
Exanthem subitum	121	120	96	103	0.40
Herpangina	9	19	30	26	0.10
Mumps	20	16	15	19	0.07
Kawasaki disease	4	6	4	3	0.01
Cold with exanthems	4	12	3	8	0.03
Influenza					
Acute hemorrhagic conjunctivitis					
Epidemic keratoconjunctivitis	7	9	9	6	0.16
Bacterial meningitis					
Aseptic meningitis			1		
<i>Mycoplasma pneumoniae</i>				1	0.04
Chlamydial pneumonia (excluding psittacosis)	1				
Infectious gastroenteritis (only by Rotavirus)					
Influenza-Associated Hospitalizations					

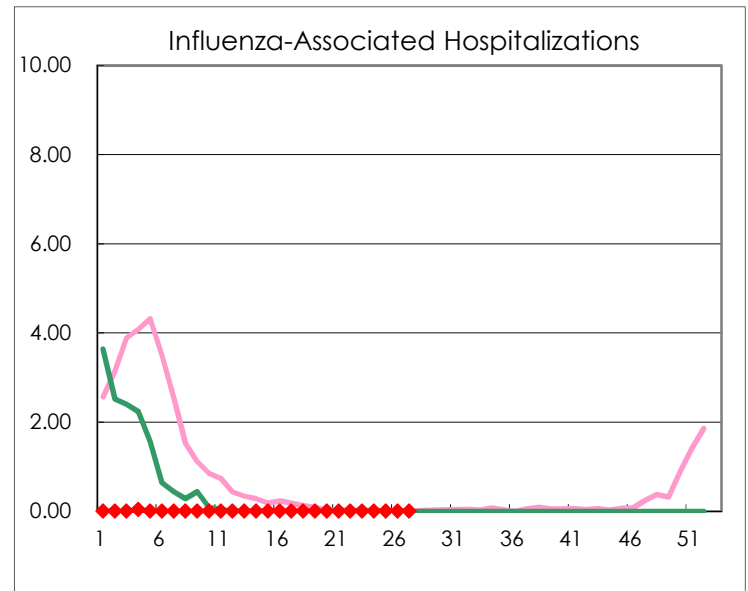
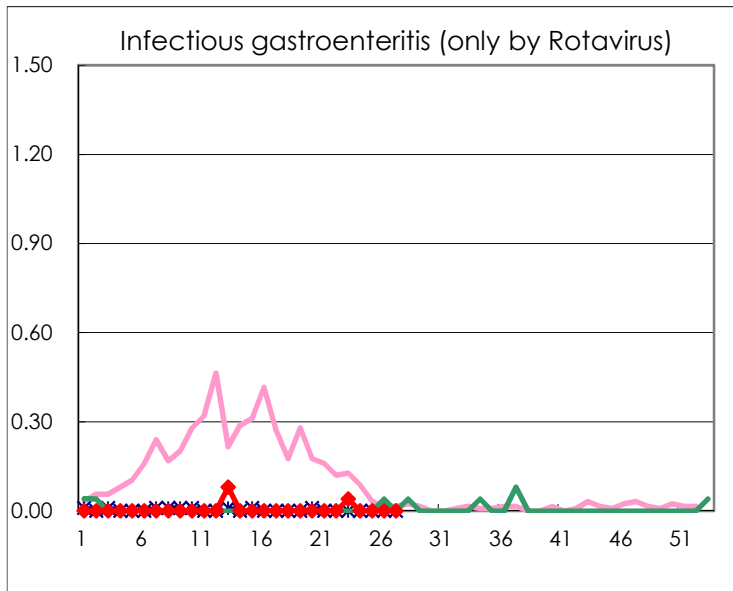
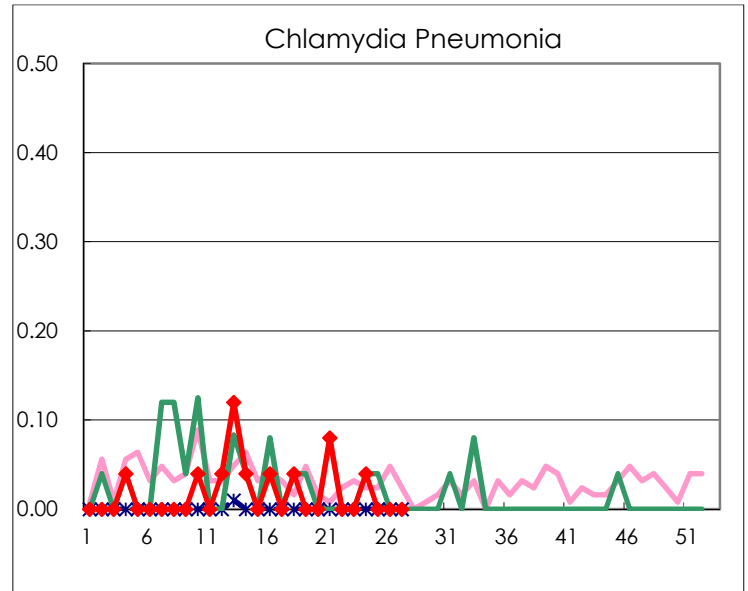
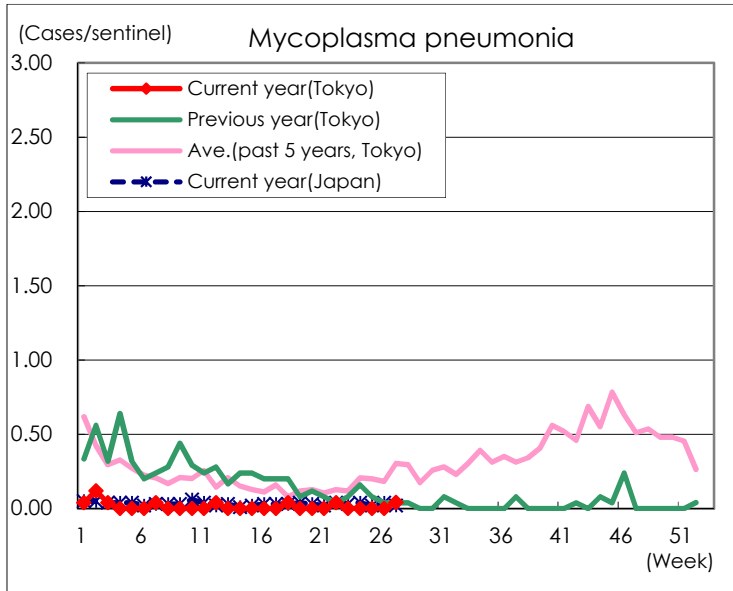
(Blank means 0.)

Disease Trend Graph (weekly reported cases per sentinel in comparison)









Number of sentinel facilities for weekly reporting		
Types of sentinels	Number of sentinels	Sentinels having reported
Pediatric	264	258
Influenza	419	410
Ophthalmic	39	38
Specially-designated	25	24